

ASSESSMENT & TAX LIST

Sylvan
1952

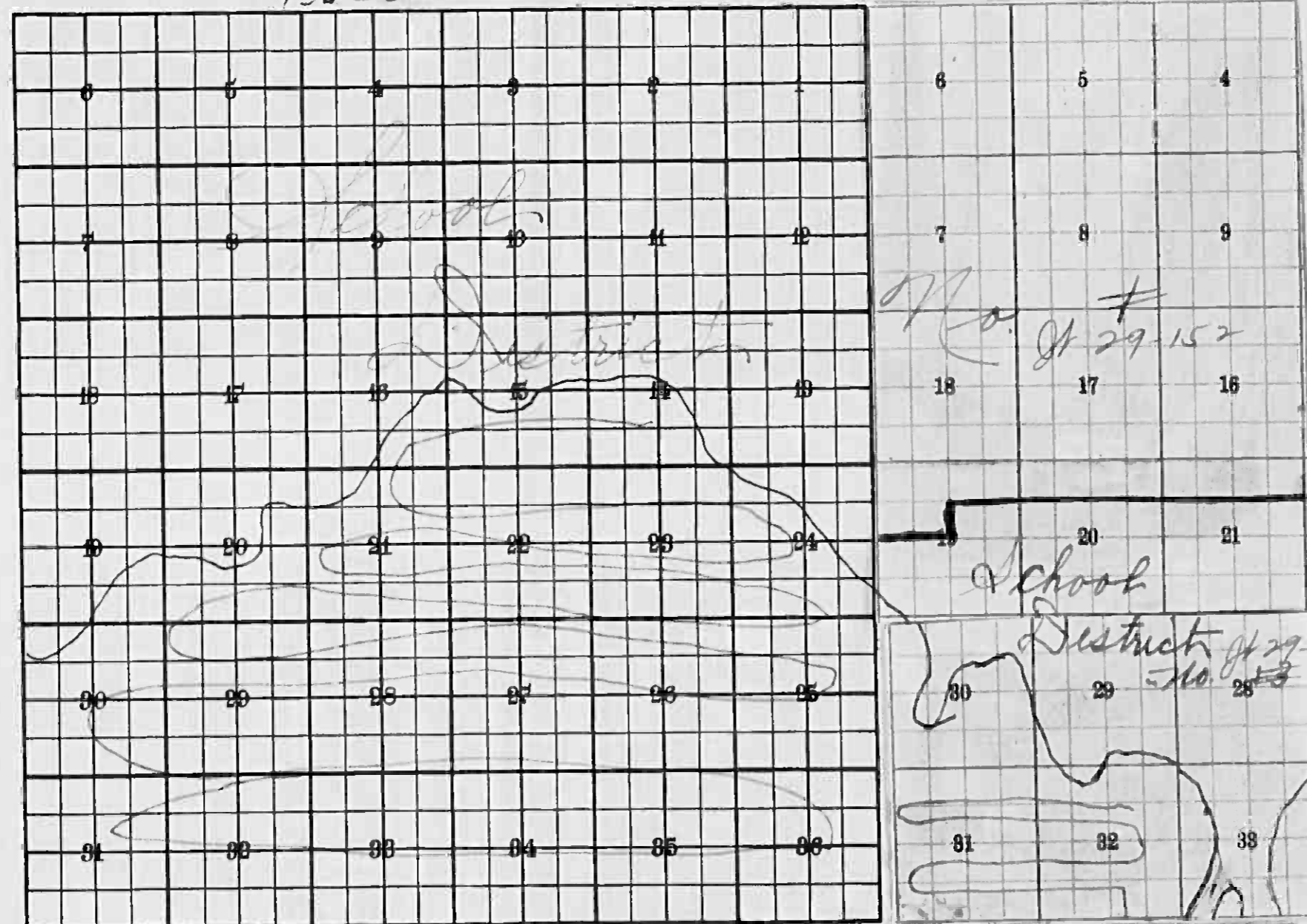
INDEX TO SECTIONS

SECTION PAGE

Sec. 1.....	
" 2.....	
" 3.....	
" 4.....	
" 5.....	
" 6.....	
" 7.....	
" 8.....	
" 9.....	
" 10.....	
" 11.....	
" 12.....	
" 13.....	
" 14.....	
" 15.....	
" 16.....	
" 17.....	
" 18.....	
" 19.....	
" 20.....	
" 21.....	
" 22.....	
" 23.....	
" 24.....	
" 25.....	
" 26.....	
" 27.....	
" 28.....	
" 29.....	
" 30.....	
" 31.....	
" 32.....	
" 33.....	
" 34.....	
" 35.....	
" 36.....	

For Convenience of Auditor in Showing Boundaries of School Districts

Township No. *133-30* Range No. *Mer. P. M.*



No. 29-152
School District # 29-152

132-29

*Sch. District # 1 & 13
 became # 29-152
 7-1-52*

133-29

Returns Showing Grain Received in or Handled by Elevators, Warehouses and Mills in the _____ of _____ in the _____ County of _____ for the Year Ending May 1, 1952.

NAMES OF OWNERS	ADDRESS	Bushels of Wheat	Bushels of Soy Beans	Bushels of Flax	Total No. of Bushels of Wheat, Soy Beans and Flax	Tax of 1/4 Mill per Bushel		Bushels of Corn	Bushels of Barley	Bushels of Rye	Bushels of Oats	Bushels of Buckwheat	Bushels of all Other Grains	Total No. Bushels Corn, Barley, Rye, Oats, Buckwheat and all Other Grains	Tax of 1/4 Mill Per Bushel		Total Tax		REMARKS		
						Dollars	Cts.								Dollars	Cts.	Dollars	Cts.			

Note * Assessors will not fill these Columns

133-30 S.W. 1/4 Sec. 36 T. 33 N. R. 29 E. SWAN SWAN BEACH LAND & AILY ADJ. N. 20 S.

SUMMARY OF TAX COLLECTION

Original Levy	-	-	-	-	-	\$ 30531.74
Additions	-	-	-	-	-	\$ 11.76
						\$ 30543.50
Abatements	-	-	-	-	-	\$ 179.08
						\$ 30364.42
COLLECTIONS						
March Settlement	-	-	-	-	-	\$ 1736.36
June Settlement	-	-	-	-	-	\$ 15912.39
November Settlement	-	-	-	-	-	\$ 11048.66
January Settlement	-	-	-	-	-	\$ 70.57
						\$ 28768.00
						\$ 1596.42
Over Collected	-	-	-	-	-	\$ 8.04
Under Collected	-	-	-	-	-	\$
Delinquent	-	-	-	-	-	\$ 1604.56
						\$ 1596.42
Total	-	-	-	-	-	\$ 30364.42

133-30
 SYMAN
 SYMAN BEACH
 LAND & AIR
 ADD'D TO S

TABULAR SCHEDULE OF VALUATIONS,

LEVIED IN THE Town OF Sylvan

RATES AND TAXES

COUNTY OF CASS, STATE OF MINNESOTA

192.88
= 26
175.14

School District No.	VALUATION BY SCHOOL DISTRICTS				RATE OF STATE TAXES		RATE OF COUNTY TAXES					RATE OF TOWN TAXES										RATE OF		
	Agri-cultural Lands	Non-Agri-cultural Lands	Personal Property	Total Value of all Property except Money and Credits	Total Rate of State Tax	Total Rate of County Tax	Rev.	R. & B.	Welfare	Bonds and Int.	Total Rate of Town Tax	Local	Special	State Loan	Deficiency	Tuition	Transportation	C.O.	Total Rate of Sch'l Tax	Total Rate of all Taxes				
29-152	92,409	48,649	7,020 2,119	150,197	4.58	105.5	27.1	12.8	5.3	14.3	15.8	1.4	13.4	1.				1.25	192.88	217.88				
					N. H. 2.26 6.84																			
Assessed Value	Rural	All Other	Personal Property	Total																				
Homestead	20,803			20,803																				
Non-Homestead	120,255		9,139	129,394																				
Total	141,058		9,139	150,197																				

SCHOOL TAXES	LOCAL 1 MILL AND SPECIAL SCHOOL TAXES BY DISTRICTS					ALL OTHER TAXES		
	Local 1 Mill	Special	State Loan	Def. Transp. C.O.	Total School Taxes	FUNDS	Rate	Amounts
67. 192.88 92. 217.88	9948	24873		27841 29829 99429 142150 15230 50768	666175 467065	State-Non-Homestead, State-Homestead,		29158 68875
	15020	502413		420551 45059 150197	1133240	County Revenue, County Road and Bridge, County Welfare, Bonds and Interest		407036 192254 770514 214786 15,845 90
						Town Revenue, Town Road and Bridge, Town Drag, Town State Loan,		21027 201264 15020 237211
						School Local 1 Mill, School Special, School State Loan, Deficiency Tuition Transportation Capital Outlay		15020 502413 420551 45059 150197 11,33240
								3053174

Total Taxes Real Estate 28,695.74
Pers. Prop. 1836.00
Total 30,531.74

Total Levy, \$ 30,531.74
I, L. C. Peterson
Auditor of said County and State aforesaid, do hereby certify that the foregoing is true and correct Schedule, showing the valuation of all the taxable property, in the Town of Sylvan, in said County, the several rates of Taxation and Totals of the several Tax Funds levied thereon for the year A. D. 195 2
Witness my hand and official seal, this 9 day of January, A. D. 195 3
By L. C. Peterson County Auditor
By Helen Billen, Deputy

SEAL

COLLECTIONS OF TAXES OF 195

OF

CASS COUNTY, MINNESOTA

FUNDS	MARCH SETTLEMENT 1953	JUNE SETTLEMENT 1953	NOV. SETTLEMENT 1953	Amount Collected from Nov. 1953 to First Monday in Jan. 1954	REDUCTIONS	Total Reductions and Collected	BALANCE UNCOLLECTED	ADDITIONS	Total Uncollected to First Monday in January, 1954
State--Non-Homestead, State--Homestead,	1952 3945	14844 35854	6362 24802	44 157					
County Revenue, County Road and Bridge, County Welfare, County Bond and Interest,	23346 11027 44193 12317	212150 100204 401597 111946	146757 69317 277809 77440	929 439 1758 490					
Town Revenue, Town Road and Bridge, Town Drag, Town State Loan,	1206 11544 861	10960 104901 7828	7582 72566 5415	48 459 34					
School Local 1 Mill, School Special, School State Loan, Deficiency Tuition Transportation CO.	861 27063 24121 2584 8614	7828 262162 219196 23485 78284	5415 189370 151631 16246 54154	34 1263 959 102 343					
	173636	1591239	1104866	7057					

	LOCAL 1 MILL	SPECIAL	STATE LOAN	Def.	Trans.	CO.	TOTALS
MARCH SETTLEMENT							
School District No. 29-152 A 29-152 NA	640 221	16010 11053		17932 6189	1921 663	6404 2210	42907 20336
Totals	861	27063		24121	2584	8614	63243
JUNE SETTLEMENT							
School District No. 29-152 A 29-152 NA	5170 2658	129257 132905		144768 74428	15511 7974	51703 26581	346409 244546
Totals	7828	262162		219196	23485	78284	590955
NOVEMBER SETTLEMENT							
School District No. 29-152 A 29-152 NA	3256 2759	81399 107971		91167 60464	9268 6478	32560 21574	218150 798666
Totals	5415	189370		151631	16246	54154	416816
NOVEMBER to JANUARY							
School District No. 29-152 A 29-152 NA	18 16	453 810		507 452	54 48	181 162	1213 1488
Totals	34	1263		959	102	343	2701
ADDITIONS							
School District No.							
Totals							
REDUCTIONS							
School District No.							
Totals							

132-29

IN WHOSE NAME ASSESSED	TO WHOM TRANSFERRED	SUBDIVISION	Sec. or Lot	Town or Block	Rng.	Number of Acres of Land	No. of Sections District	Indicate Homestead Tax or No	Indicate Agricultural Tax or No	TRUE AND FULL VALUATIONS				ASSESSED VALUATIONS					FINAL EQUALIZED VALUE		
										LAND Excludes of Structures and Improvements	BUILDINGS and Other Structures	MACHINERY Permanently Attached to Real Estate	TOTAL True and Full Value	RURAL		ALL OTHER		MACHINERY Permanently Attached to Real Estate		TOTAL ASSESSED VALUE	Total Assessed Value as Equalized by the Board of Review
														Homestead Up to \$4,000	Over \$4,000 and Non-Homestead	Homestead Up to \$4,000	Over \$4,000 and Non-Homestead				
														20%	33 1/3%	25%	40%				
Dollars	Dollars	Dollars	Dollars	Dollars	Dollars	Dollars	Dollars	Dollars	Dollars	Dollars											
<i>Adolph & Ethel Staub</i>		<i>NE 1/4 of NE 1/4 Lot 4 132 29</i>				<i>54 74</i>				<i>415</i>	<i>1100</i>	<i>1515</i>	<i>303</i>		<i>1375</i>	<i>275</i>	<i>303</i>				
		<i>NW 1/4 of NE 1/4 Lot 5 132 29</i>								<i>375</i>	<i>1000</i>	<i>1375</i>	<i>275</i>			<i>275</i>	<i>275</i>				

SOLD FOR TAXES	VALUATIONS BY SCHOOL DISTRICTS AS EQUALIZED BY DEPARTMENT OF TAXATION						Tax including State Homestead	State Tax on Non-Homestead	SPECIAL TAXES	TOTAL TAXES	PAID	WHEN PAID	Number of Receipt	March Settlement 1953	June Settlement 1953	Penalty	November Settlement 1953	Penalty	Collections to First Monday in January 1954	Penalty	Delinquent on First Monday in January 1954	Total Delinquent Tax and Penalty	REMARKS
	District No.	Rate	District No.	Rate	District No.	Rate																	
	District No.	Rate	District No.	Rate	District No.	Rate																	
	Mills	Mills	Mills	Mills	Mills	Mills																	
	Dollars	Dollars	Dollars	Dollars	Dollars	Dollars																	
<i>1</i>						<i>58 44</i>	<i>2 28</i>		<i>58 44</i>	<i>1 PAID IN FULL</i>	<i>MAY 29 1953</i>	<i>6 26</i>		<i>58 44</i>								<i>6 26</i>	
<i>2</i>										<i>2</i>													

133-27
 VILLAGE OF SYLVAN
 SYLVAN BEACH
 LAND & ALL
 ADD'N TO S

Assessment Roll and Tax List of Real Property in the Town of *Lybman*

Cass County, Minnesota, for Taxes for the Year 1952.

132-29
133-29

IN WHOSE NAME ASSESSED	TO WHOM TRANSFERRED	SUBDIVISION	Sec. or Lot	Town or Block	Reg.	Number of Acres of Land	No. School District	Ind. rate	Agr. rate	Machinery	TRUE AND FULL VALUATIONS						ASSESSED VALUATIONS						Total Assessed Value as Equalized by the Board of Review	FINAL EQUALIZED VALUE	SOLD FOR TAXES	VALUATIONS BY SCHOOL DISTRICTS AS EQUALIZED BY DEPARTMENT OF TAXATION						Total Taxes	PAID	WHEN PAID	Number of Receipt	March Settlement 1953	June Settlement 1953	Penalty	November Settlement 1953	Penalty	Collections to First Monday in January 1954	Penalty	Delinquent on First Monday in January 1954	Total Delinquent Tax and Penalty	REMARKS			
											LAND	BUILDINGS	MACHINERY	TOTAL True and Full Value	RURAL		ALL OTHER		MACHINERY	TOTAL ASSESSED VALUE	District No.	Rate				District No.	Rate	District No.	Rate	District No.	Rate															Tax Including State Homestead	State Tax on Non-Homestead	SPECIAL TAXES
															Exclusives and Improvements	Other Structures	Up to \$4,000 20%	Over \$4,000 and Non-Homestead 33 1/3%																														
Arnold Gravley		NE 1/4 of NW 1/4 Lot 1 less 33 2 ac	4	133	29	4.25	440				55				10						11					212	212	1	PAID IN FULL	MAR 31 1953	3108		212															
Geo. B. Anderson		NW 1/4 of NW 1/4 Lot 2				37.25	710				279				83						93					1794	22	1816	2	PAID IN FULL	MAR 31 1953	6849		1816														
Severn J. Anderson		SW 1/4 of NE 1/4 less 8 ac				31.10	410				205				41						41					790		790	3	2nd Half Paid	OCT 10 1953	13618		393		393												
Arnold Gravley		SE 1/4 of NE 1/4				25.20					125	650			165						165					3182		3182	4	PAID IN FULL	MAR 31 1953	3119		3182														
Minnesota Power & Light Co.		33 ac of Lot 14 14.8 ac of SE 1/4 of NE 1/4				48	710				414				138						138					2662	30	2692	5	2nd Half Paid	OCT 22 1953	13723		1346		1346												
Minnesota Power & Light Co.		Lot 3 NE 1/4 of NW 1/4 less 64.45 ac. to				68.45	410				535	800			1335	267					267					5150		5150	7	PAID IN FULL	MAY 16 1953	5263		5150														
Minnesota Power & Light Co.		SE 1/4 of NW 1/4									485	725			1210	242					242																											
Minnesota Power & Light Co.		SE 1/4 of NW 1/4									105				35						35					676	08	684	10	PAID IN FULL	MAY 29 1953	8278		684														
Severn J. Anderson		NE 1/4 of SW 1/4				40	410				215				39						39					830		830	11	2nd Half Paid	OCT 10 1953	13618		415		415												
Minnesota Power & Light Co.		NW 1/4 of SW 1/4				40	710				306				102						102					1968	24	1992	12	1st Half Paid	OCT 22 1953	13723		1992		1992												
Minnesota Power & Light Co.		SW 1/4 of SW 1/4				40					306				102						102					1968	24	1992	13	1st Half Paid	OCT 22 1953	13723																
Severn J. Anderson		SE 1/4 of SW 1/4				40	410				155				31						31					598		598	14	1st Half Paid	OCT 10 1953	13618		299		299												
Minnesota Power & Light Co.		64.45 ac of Lot 34 4 ac of NW 1/4 of NE 1/4				64.45	710				564				188						188					3662	42	3668	15	2nd Half Paid	OCT 22 1953	13723		1834		1834												
State of Minnesota		NE 1/4 of SE 1/4																																														
Severn J. Anderson		NW 1/4 of SE 1/4				40	410				165	415			116						116					2238		2238	17	2nd Half Paid	OCT 10 1953	13618		1119		1119												
John H. & Emily Peterson		SW 1/4 of SE 1/4				40					100				22						22					424		424	18	PAID IN FULL	MAY 13 1953	5274		424														
		SE 1/4 of SE 1/4				40					100				22						22					424		424	19	PAID IN FULL	MAY 13 1953	5274		424														
						664.60					3689	1895			5564	778					658					26542	150	26692	20					19292		7400												

Assessment Roll and Tax List of Real Property in the Town of Lyman

Cass County, Minnesota, for Taxes for the Year 1952.

132-29
133-29

Table with columns: IN WHOSE NAME ASSESSED, TO WHOM TRANSFERRED, DESCRIPTION OF PROPERTY, TRUE AND FULL VALUATIONS, ASSESSED VALUATIONS, VALUATIONS BY SCHOOL DISTRICTS AS EQUALIZED BY DEPARTMENT OF TAXATION, Tax Including State Homestead, State Tax on Non-Homestead, SPECIAL TAXES, TOTAL TAXES, PAID, WHEN PAID, Number of Receipt, March Settlement 1953, June Settlement 1953, Penalty, November Settlement 1953, Penalty, Collections to First Monday in January 1954, Penalty, Delinquent on First Monday in January 1954, Total Delinquent Tax and Penalty, REMARKS.

IN WHOSE NAME ASSESSED TO WHOM TRANSFERRED		DESCRIPTION OF PROPERTY Subdivision, Sec. or Lot, Town or Block, Range			TRUE AND FULL VALUATIONS				ASSESSED VALUATIONS					SOLD FOR TAXES	VALUATIONS BY SCHOOL DISTRICTS AS EQUALIZED BY DEPARTMENT OF TAXATION						Tax including State Homestead	State Tax on Non-Homestead	SPECIAL TAXES	TOTAL TAXES	PAID	WHEN PAID	Number of Receipt	March Settlement 1953	June Settlement 1953	Penalty	November Settlement 1953	Penalty	Collections to First Monday in January 1954	Penalty	Delinquent on First Monday in January 1954	Total Delinquent Tax and Penalty	REMARKS									
					LAND Exclusive of Structures and Improvements	BUILDINGS and Other Structures	MACHINERY Permanently Attached to Real Estate	TOTAL True and Full Value	RURAL		ALL OTHER		MACHINERY Permanently Attached to Real Estate		TOTAL ASSESSED VALUE	Total Assessed Value as Equalized by the Board of Review	FINAL EQUALIZED VALUE	District No.	Rate	District No.																		Rate	District No.	Rate	District No.	Rate				
									Homestead Up to \$4,000	Over \$4,000 and Non-Homestead	Homestead Up to \$4,000	Over \$4,000 and Non-Homestead																															Homestead	Over \$4,000 and Non-Homestead	Homestead	Over \$4,000 and Non-Homestead
									20%	33 1/3%	25%	40%																															33 1/3%	TOTAL ASSESSED VALUE		
John & Myrtle R. Bratrud	"	NE 1/4 of NE 1/4 Lot 1	6 133 29	3666	120	110	120	22	24	22	24	1	24								462		462	1 PAID IN FULL	MAY 2 9 1953	6850		462																		
"	"	NW 1/4 of NE 1/4 Lot 2	"	3778	125	115	125	23	25	23	25	2	25								482		482	2 PAID IN FULL	MAY 2 9 1953			482																		
Charles L. & Caroline Peterson	"	SW 1/4 of NE 1/4	"	40	129	117	129	39	43	39	43	3	43								830	10	840	3 1st Half Paid	MAY 2 9 1953	6860		840		840																
"	"	SE 1/4 of NE 1/4	"	40	129	117	129	39	43	39	43	4	43								830	10	840	4 2nd Half Paid	OCT 31 1953	14737																				
		NE 1/4 of NW 1/4										5																																		
		NW 1/4 of NW 1/4										6																																		
		SW 1/4 of NW 1/4										7																																		
		SE 1/4 of NW 1/4										8																																		
												9																																		
												10																																		
Ella Nordine	"	NE 1/4 of SW 1/4	"	40 47	120	120	120	24	26	24	26	11	26								502		502	11 2nd Half Paid	OCT 8 1953																					
"	"	NW 1/4 of SW 1/4	"	40 65	245	240	245	48	53	48	53	12	53								1022		1022	12 1st Half Paid	MAY 2 9 1953	8129		2074		2074																
"	"	SW 1/4 of SW 1/4	"	40	225	205	225	45	45	45	45	13	45								868		868	13 1st Half Paid	OCT 8 1953	12363																				
"	"	SE 1/4 of SW 1/4	"	40	455	415	455	91	83	91	83	14	83								1756		1756	14 1st Half Paid	MAY 2 9 1953																					
												15																																		
Crower Peterson	"	NE 1/4 of SE 1/4	"	40	125	115	125	25	23	25	23	16	23								482		482	16 2nd Half Paid	OCT 2 9 1953			241		241																
"	"	NW 1/4 of SE 1/4	"	40	125	115	125	25	23	25	23	17	23								482		482	17 1st Half Paid	MAY 2 9 1953			241		241																
"	"	SW 1/4 of SE 1/4	"	40	125	115	125	25	23	25	23	18	23								482		482	18 1st Half Paid	OCT 2 9 1953			241		241																
"	"	SE 1/4 of SE 1/4	"	40	255	230	255	51	46	51	46	19	46								1312		1312	19 1st Half Paid	MAY 2 9 1953			656		656																
												20																																		
				493 36	229	2614	857	229	489	229	489		493								9510	20	9530					5237		4293																

132-29
133-29

VILLAGE OF SYLVAN
SYLVAN BEACH
LAND & ALLEYS
ADDN TO ST

Assessment Roll and Tax List of Real Property in the *Town of Sibley* of *Sibley*

Cass County, Minnesota, for Taxes for the Year 1952.

IN WHOSE NAME ASSESSED	TO WHOM TRANSFERRED	SUBDIVISION	Sec. Lot	Town or Block	Rng.	Number of Acres of Land	TRUE AND FULL VALUATIONS						ASSESSED VALUATIONS				FINAL EQUALIZED VALUE	SOLD FOR TAXES	VALUATIONS BY SCHOOL DISTRICTS AS EQUALIZED BY DEPARTMENT OF TALSATION						Tax Including State Homestead	State Tax on Non-Homestead	SPECIAL TAXES	TOTAL TAXES	PAID	WHEN PAID	Number of Receipt	March Settlement 1953	June Settlement 1953	Penalty	November Settlement 1953	Penalty	Collections to First Monday in January 1954	Penalty	Delinquent on First Monday in January 1954	Total Delinquent Tax and Penalty	REMARKS	
							LAND Excl. of Structures and Improvements	BUILDINGS and Other Structures	MACHINERY Permanently Attached to Real Estate	TOTAL True and Full Value	RURAL		ALL OTHER		MACHINERY Permanently Attached to Real Estate	TOTAL ASSESSED VALUE			Total Assessed Value as Equalized by the Board of Review	District No.	District Rate	District No.	District Rate	District No.																		District Rate
											Homestead Up to \$4,000 20%	Over \$4,000 and Non-Homestead 33 1/3%	Homestead Up to \$4,000 25%	Over \$4,000 and Non-Homestead 40%																												
							Dollars	Dollars	Dollars	Dollars	Dollars	Dollars	Dollars	Dollars	Dollars	Dollars			Dollars	Dollars	Dollars	Dollars	Dollars	Dollars																		Dollars
<i>Dr. B. Bussalt</i>		NE 1/4 of NE 1/4	16	133	27	40	21 1/2	46	310	110	420	84	76	84	76	84						1620			1620	1 PAID IN FULL	APR 30 1953	3895		1620												
<i>Louis M. Stank & Carrie Peterson</i>		NW 1/4 of NE 1/4				40	70	66			66		20	20							424	.04		428	2 PAID IN FULL	MAY 2 9 1953	8136															
State of Minnesota		SW 1/4 of NE 1/4																																								
<i>Lillian B. & May Bussalt</i>		SE 1/4 of NE 1/4				40	46	455	415		455	81	83	83										1756	4 PAID IN FULL	APR 30 1953	3895		1756													
<i>Lawrence Lupton</i>		NE 1/4 of NW 1/4				40	46	155	140		155	31	28	28										598	6 PAID IN FULL	MAY 1 8 1953	5275		598													
"		NW 1/4 of NW 1/4 less Ry				32	"	740	740		740	38		38										810	7 PAID IN FULL	MAY 1 8 1953			810													
<i>Minnesota Power & Light Co.</i>		SW 1/4 of NW 1/4				40	70	354	321		354	118		118									2276	26	2302	8 1st Half Paid	MAY 2 9 1953	8277		2302			2302									
"		SE 1/4 of NW 1/4				40	"	354	321		354	118		118									2276	26	2302	9 1st Half Paid	MAY 2 9 1953	13924														
<i>Philip F. Holzman</i>		NE 1/4 of SW 1/4				40	"	66	66		66	22		22									424	.04	428	11 PAID IN FULL	MAY 2 9 1953	8208		428												
<i>Minnesota Power & Light Co.</i>		NW 1/4 of SW 1/4				40	"	354	321		354	118		118									2276	26	2302	12 2nd Half Paid	MAY 2 9 1953	8277		2302			2302									
"		SW 1/4 of SW 1/4				40	"	354	321		354	118		118									2276	26	2302	13 1st Half Paid	MAY 2 9 1953	13924														
<i>Philip F. Holzman</i>		SE 1/4 of SW 1/4				40	20	132	120	66	198	66		66									1274	14	1288	14 PAID IN FULL	MAY 2 9 1953	9208		1288												
<i>Milton & Eileen Gradsky</i>		NE 1/4 of SE 1/4				40	46	485	440		485	97		97									1870		1870	16 SOLD FOR TAXES																
<i>Steven Katz</i>		NW 1/4 of SE 1/4				40	"	235	650	885	107		107	107									3414		3414	17 PAID IN FULL	MAR 2 4 1953	3657		3414												
"		SW 1/4 of SE 1/4				40	"	215	590	805	161		161	161									1832		1832	18 PAID IN FULL	MAR 2 4 1953	3657		1832												
<i>Milton & Eileen Gradsky</i>		SE 1/4 of SE 1/4				40	"	475	385	860	107		107	86									3434		3434	19 SOLD FOR TAXES																
						40	"	505	350	855	178		178	178									178		178	20 SOLD FOR TAXES																
						598		8594	1100	5221	795	533		533	1377								795		26560	126	26686		1678		464			5304								

Assessment Roll and Tax List of Real Property in the *Town* of *Sylhan*

Form JCD (52) 1-15-52

IN WHOSE NAME ASSESSED

TO WHOM TRANSFER

John A. Miller
Minnesota Power & Light Co.

Hono. Abner & Family J. Tindall

Guysara Range Power Co.

Morton J. & Bertha A. Phillips

Luy S. & Mabel Smith

Dr. H. & Inez Palmer

Minnesota Power & Light Co.

Dr. H. & Inez Palmer

State of Minnesota

Minnesota Power & Light Co.

J. Cunningham

Minnesota Power & Light Co.

"

"

"

"

Table with columns: TRUE AND FULL VALUATIONS (LAND, BUILDINGS, MACHINERY), ASSESSED VALUATIONS (RURAL, ALL OTHER, MACHINERY), FINAL EQUALIZED VALUE. Includes handwritten notes and calculations.

Table with columns: VALUATIONS BY SCHOOL DISTRICTS AS EQUALIZED BY DEPARTMENT OF TAXATION, Tax including State Homestead, State Tax on Non-Homestead, SPECIAL TAXES, TOTAL TAXES, PAID, WHEN PAID, Number of Receipt, March Settlement 1953, June Settlement 1953, November Settlement 1953, Collections to First Monday in January 1954, Delinquent on First Monday in January 1954, Total Delinquent Tax and Penalty, REMARKS. Includes handwritten notes and calculations.

Assessment Roll and Tax List of Real Property in the Lower of Sylvan

Cass County, Minnesota, for Taxes for the Year 1952.

IN WHOSE NAME ASSESSED	TO WHOM TRANSFERRED	DESCRIPTION OF PROPERTY			TRUE AND FULL VALUATIONS										FINAL EQUALIZED VALUE		
					LAND		BUILDINGS and Other Structures	MACHINERY Permanently Attached to Real Estate	TOTAL True and Full Value	RURAL		ALL OTHER		MACHINERY Permanently Attached to Real Estate 33 1/2%		TOTAL ASSESSED VALUE	Total Assessed Value as Equalized by the Board of Review
					70%	30%				Homestead Up to \$4,000 20%	Over \$4,000 and Non-Homestead 33 1/2%	Homestead Up to \$4,000 25%	Over \$4,000 and Non-Homestead 40%				
					Dollars	Dollars	Dollars	Dollars	Dollars	Dollars	Dollars	Dollars	Dollars	Dollars		Dollars	
Guy & Mabel Smith		NE 1/4 of NE 1/4	18 133 29	36 06	415	325	1030	1405	281		281	281	281				
"	"	NW 1/4 of NE 1/4		39 78	"	270	735	1275	255		255	255	255				
Grover & Laura Peterson		SW 1/4 of NE 1/4	See Ref	28 02	710	306		279		102	93	102	93				
"	"	SE 1/4 of NE 1/4	"	31 74	"	345	110	414		152	138	152	138				
Guy & Mabel Smith		NE 1/4 of NW 1/4		40	460	280		280	56		56	56	56				
"	"	NW 1/4 of NW 1/4	Lot 1	40 81	"	485		440	88		88	97	88				
Chas R. & Mabel M. Woodhouse		SW 1/4 of NW 1/4	Lot 2 See Ref	29 03	"	215		195	43		39	43	39				
"	"	SE 1/4 of NW 1/4	"	27 80	"	205		185	41		37	41	37				
L. R. Woodhouse		NE 1/4 of SW 1/4		40	"	440		400	88		88	88	88				
"	"	NW 1/4 of SW 1/4	Lot 3	41 65	"	530		480	106		96	106	96				
"	"	NW 1/4 of SW 1/4	Lot 4	42 07	"	415	770	1185	237		215	237	215				
"	"	SE 1/4 of SW 1/4		40	"	345		315	63		63	63	63				
Grover & Laura Peterson		NE 1/4 of SE 1/4		40	710	459		417	153		139	153	139				
"	"	NW 1/4 of SE 1/4		40	"	459		417	153		139	153	139				
L. R. Woodhouse		SW 1/4 of SE 1/4		40	460	375		340	75		68	75	68				
Minnesota Lower & Light Co.		SE 1/4 of SE 1/4		40	710	396		360	132		120	132	120				
				396 90		520 9	1911	1099	1047	627	1839	1670	1839				

SOLD FOR TAXES	VALUATIONS BY SCHOOL DISTRICTS AS EQUALIZED BY DEPARTMENT OF TAXATION						TAX including State Homestead	State Tax on Non-Homestead 22 1/2 Mills	SPECIAL TAXES	TOTAL TAXES	PAID	WHEN PAID	Number of Receipt	March Settlement 1953	June Settlement 1953	November Settlement 1953	Penalty	Collections to First Monday in January 1954	Penalty	Delinquent on First Monday in January 1954	Total Delinquent Tax and Penalty	REMARKS			
	District No.	District No.	District No.	District No.	District No.	District No.																			
	Rate	Rate	Rate	Rate	Rate	Rate																			
	Mills	Mills	Mills	Mills	Mills	Mills																			
1	# 281						54 20		54 20	1	PAID IN FULL	MAY 2 9 1953	8137												
2	# 54						10 42		10 42	2	PAID IN FULL	MAY 2 9 1953													
3	102						19 68	24	19 92	3	2nd Half Paid	OCT 2 9 1953	6722												
4	152						29 32	24	29 66	4	1st Half Paid	MAY 2 9 1953	14237												
5										5															
6	# 66						10 80		10 80	6	PAID IN FULL	MAY 2 9 1953	8137												
7	# 97						18 70		18 70	7	PAID IN FULL	MAY 2 9 1953													
8	# 43						8 30		8 30	8	2nd Half Paid	OCT 3 1 1953	8140												
9	# 41						7 90		7 90	9	1st Half Paid	MAY 2 9 1953	14235												
10										10															
11	# 88						16 98		16 98	11	2nd Half Paid	OCT 3 1 1953													
12	# 106						20 44		20 44	12	1st Half Paid	MAY 2 9 1953	8140												
13	# 237						45 72		45 72	13	1st Half Paid	MAY 2 9 1953	4825												
14	# 69						13 30		13 30	14	1st Half Paid	MAY 2 9 1953													
15										15															
16	153						29 52	34	29 86	16	2nd Half Paid	OCT 2 9 1953	6722												
17	153						29 52	34	29 86	17	1st Half Paid	MAY 2 9 1953	14237												
18	# 75						14 46		14 46	18	1st Half Paid	MAY 2 9 1953	8140												
19	13 2						25 46	30	25 76	19	2nd Half Paid	OCT 2 9 1953	13925												
20	# 1147						354 72	156	356 28	20	1st Half Paid	MAY 2 9 1953	8278												

132-29
133-29

ATTACH TO SYLVAN

133-30

ASSUMES SYLVAN

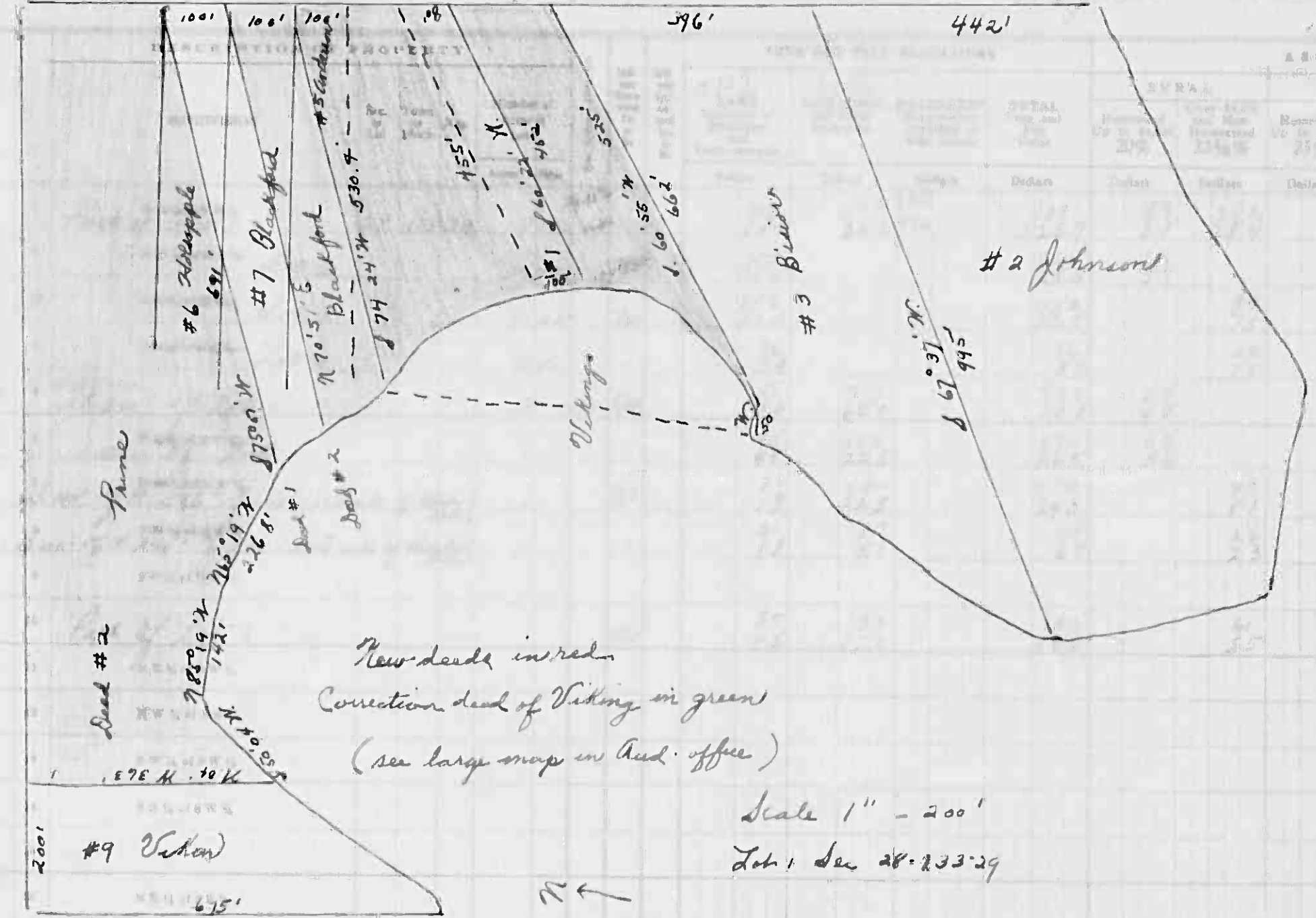
SYLVAN BEACH

LAND & ALLEN'S ADDN TO SYLVAN

Form 500 (52) - JULY 1951 - COMPILED BY THE STATE OF MINNESOTA

IN WHOSE NAME ASSESSED TO WHOM TRANSFERRED

Geo. W. & Agnes I. Prince
 Ole Peterson
 H. D. Mc Neilson
 Richard M. & Georgia Johnson
 Fred Deugen
 Harry C. Judd & Beulah B. Judd



ASSESSED VALUATIONS				FINAL EQUALIZED VALUE
OTHER	MACHINERY	TOTAL ASSESSED VALUE	Total Assessed Value as Equalized by the Board of Review	
Over \$1,000 and Non-Homestead 40%	Permanently Attached to Real Estate 33 1/3%			Dollars
		401		
		365		
		63		
		84		
		75		
		12		
		17		
		154		
		170		
		59		
		53		
		90		
		81		
		26		
		23		
		61		
		55		

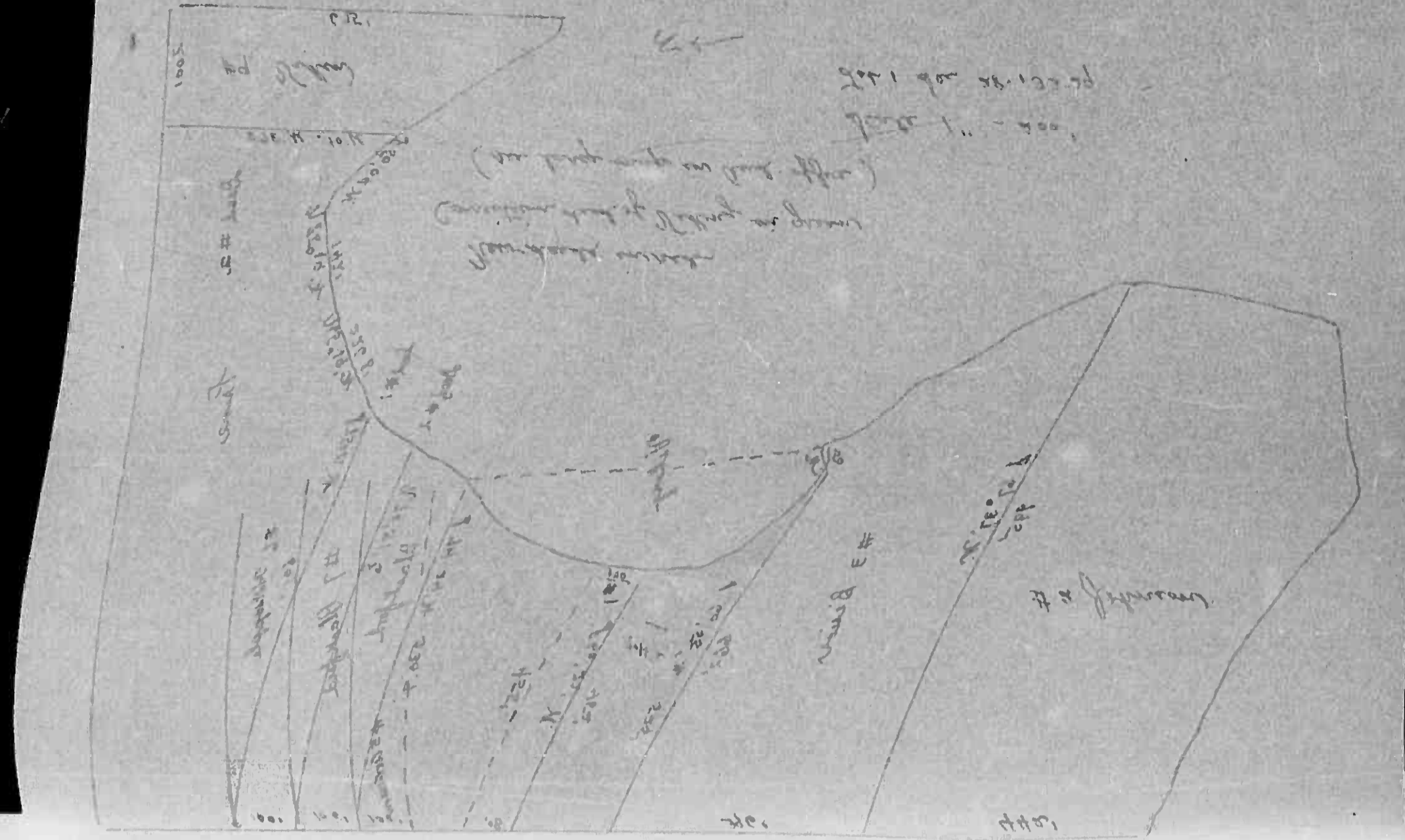
SOLD FOR TAXES	VALUATIONS BY SCHOOL DISTRICTS AS EQUALIZED BY DEPARTMENT OF TAXATION						Tax Including State Homestead	State Tax on Non-Homestead	SPECIAL TAXES	TOTAL TAXES	PAID	WHEN PAID	Number of Receipt	March Settlement 1953	June Settlement 1953	November Settlement 1953	Penalty	Collections to First Monday in January 1954	Penalty	Delinquent on First Monday in January 1954	Total Delinquent Tax and Penalty	REMARKS
	District No.	District No.	District No.	District No.	District No.	District No.																

1																						
2																						
3																						
4																						
5																						
6																						
7																						
8																						
9																						
10																						
11																						
12																						
13																						
14																						
15																						
16																						
17																						
18																						
19																						
20																						

8527	709	2671	3580	365	525	950
	219	2423	3242	331	529	860

#365	18324	130	18454	15316	1414	1724
585						
950						

Assessment Roll and Tax List of Real Property in the Town of Appleton of Appleson



Cass County, Minnesota, for Taxes for the Year 1952.

Table with columns: IN WHOSE NAME ASSESSED, TO WHOM TRANSFERRED, DESCRIPTION OF PROPERTY, TRUE AND FULL VALUATIONS, ASSESSED VALUATIONS, VALUATIONS BY SCHOOL DISTRICTS AS EQUALIZED BY DEPARTMENT OF TAXATION, TAXES, PAID, WHEN PAID, Number of Receipt, March Settlement, June Settlement, November Settlement, Penalties, Total Delinquent Tax and Penalty, REMARKS. Includes handwritten entries for various property lots and owners.

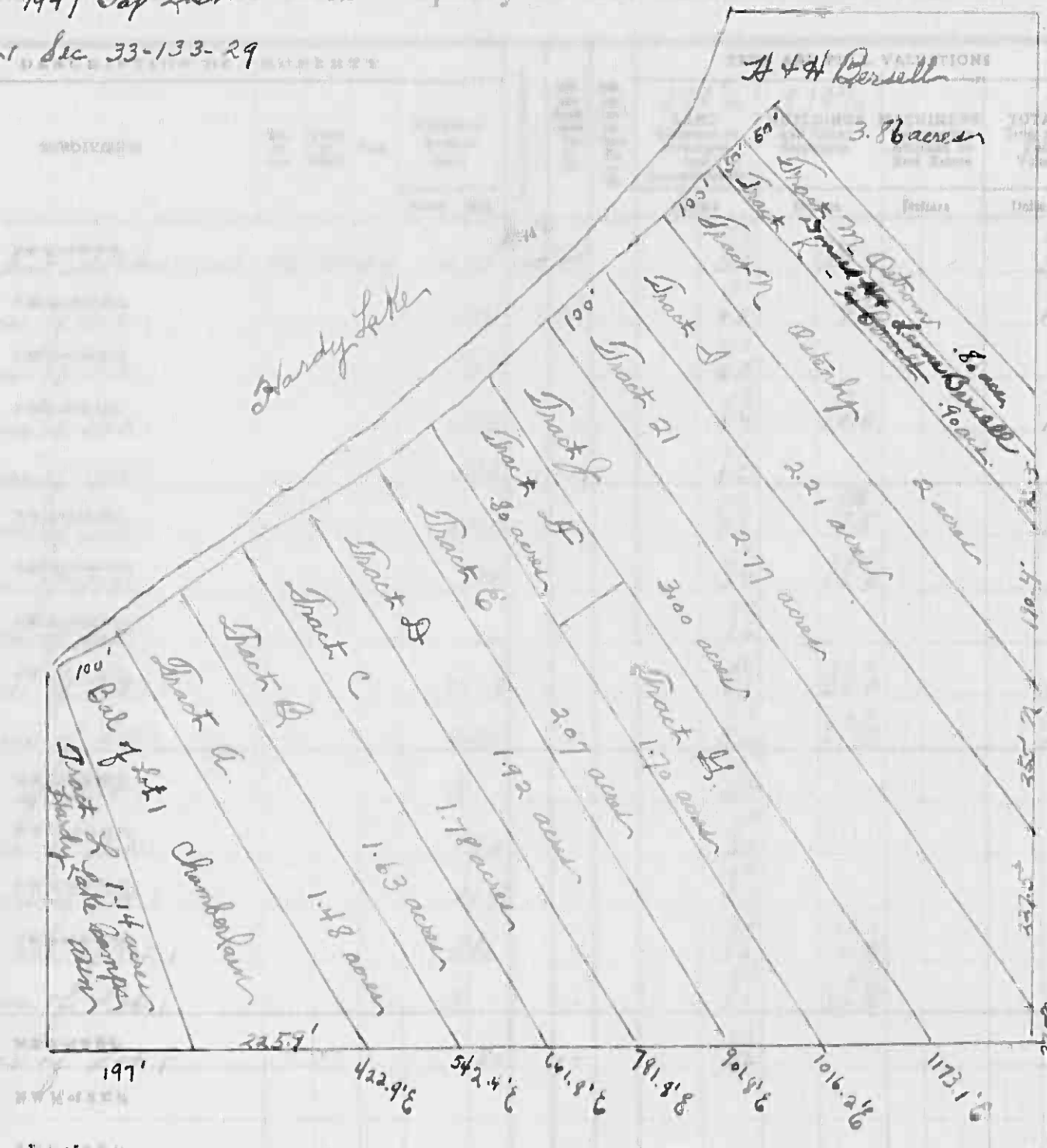
Assessment Roll and Tax of Real Property in the

1947 Jay Lick
Ltr. Sec. 33-133-29

Form SCD (52) UNCLE-SAMS COMPANY, MINNESOTA

IN WHOSE NAME ASSESSED TO WHOM TRANSFERRED

Michael A. & Olga G. Chamberlain
Joseph Hoeppel (Tract A)
" (Tract B)
Edward & Susan Heikonen (Tract C)
John A. Johnson & Frieda G. Johnson (Tract D)
John A. & Frieda Johnson (Tract E)
Merrill & Inez Koser (Tract F)
John H. & Mary Goodwin (Tract G)
Julius & Anna Svensson (Tract H)
Conrad C. & Elsa M. Lindblom (Tract I)
John & Mary Goodwin (Tract J)
John H. & Marie Goodwin (Tract K)
Hugo & Lillian Bersehl (Tract L)
Hardy Lake Camp Assn. Inc. (Tract M)
Hugo & Hilda Bersehl
Edward & Vernon E. Ostrom (Tract N)
Hilding & Eunice E. Ostrom (Tract O)



ASSESSED VALUATIONS

RURAL		ALL OTHER		MACHINERY	TOTAL ASSESSED VALUE	Total Assessed Value as Equalized by the Board of Review
Homestead Up to \$4,000 20%	Over \$4,000 and Non-Homestead 33 1/3%	Homestead Up to \$4,000 25%	Over \$4,000 and Non-Homestead 40%	Permanently Attached to Real Estate 33 1/3%		
					83	75
					45	40
					17	15
					53	48
					17	15
					46	41
					58	58
					13	13
					96	96
					87	87
					89	89
					23	23
					13	13
					12	12
					9	9
					69	69
					62	62
					92	92
					13	13
					12	12

SOLD FOR TAXES

VALUATIONS BY SCHOOL DISTRICTS AS EQUALIZED BY DEPARTMENT OF TAXATION

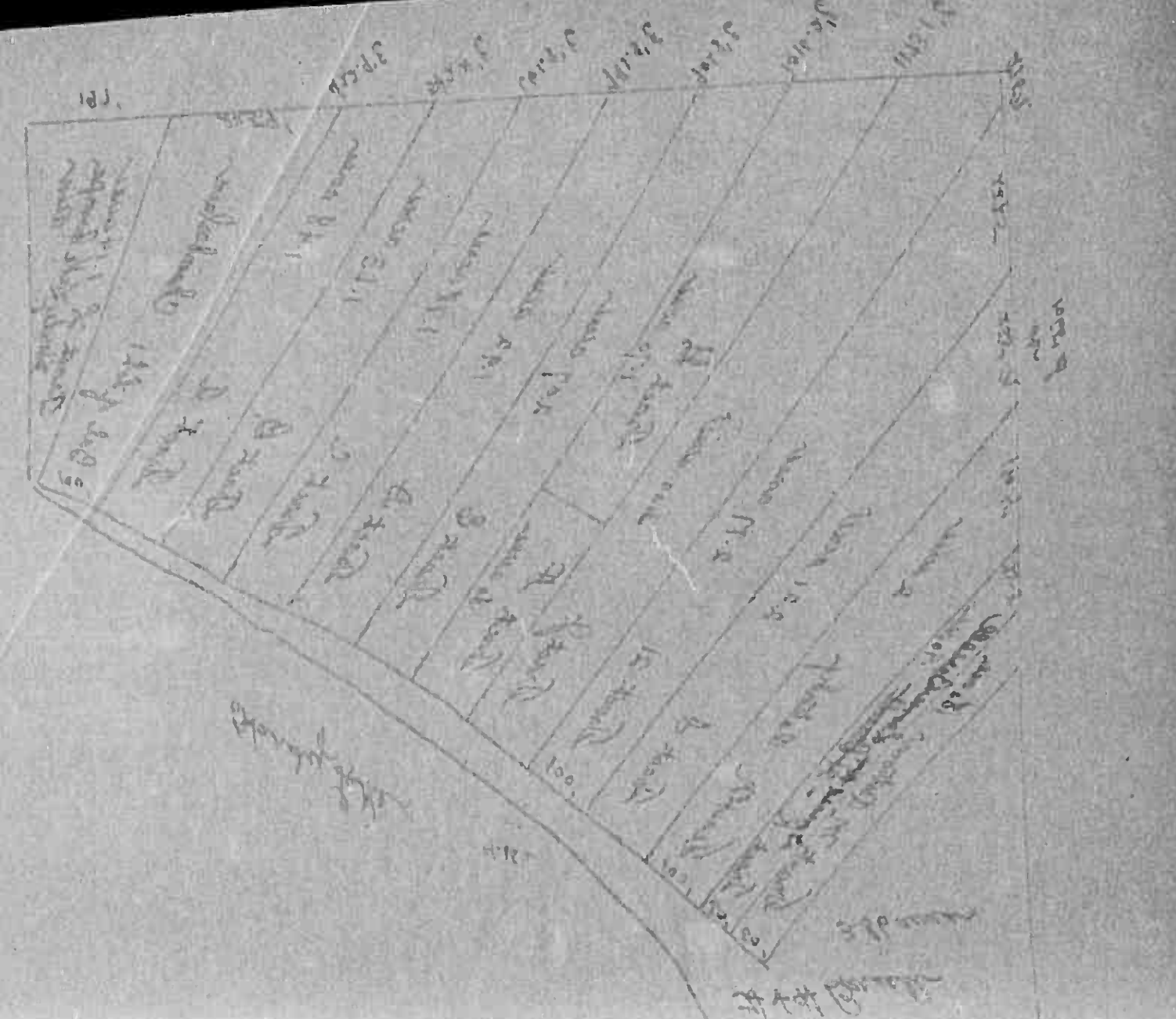
District No.	District No.	District No.	District No.	District No.	Tax including State Homestead	State Tax on Non-Homestead	SPECIAL TAXES	TOTAL TAXES
1	83				16.00			16.00
2	45				8.68	10		8.78
3	17				3.28	04		3.32
4	53				10.22	12		10.34
5	17				3.28	04		3.32
6	46				8.88	10		8.98
7	64				12.24	14		12.48
8					2.50	.02		2.52
9	96				18.52	22		18.74
10	98				18.90	22		19.12
11					4.82	.06		4.88
12	13				2.50	.02		2.52
13	10				1.92	.02		1.94
14	69				13.30	16		13.46
15	101				19.48	22		19.70
16	13				2.50	.02		2.52
17								
18								
19								
20	83				147.12	1.50		148.62

Cass County, Minnesota, for Taxes for the Year 1952.

PAID	WHEN PAID	Number of Receipt	March Settlement 1953	June Settlement 1953	Penalty	November Settlement 1953	Penalty	Collections to First Monday in January 1954	Penalty	Delinquent on First Monday in January 1954	Total Delinquent Tax and Penalty	REMARKS
	PAID IN FULL											
1												
2												
3												
4												
5												
6												
7												
8												2.52 Cancelled
9												
10												4.88 Cancelled
11												
12												2520 277 194
13												
14												
15												1770 2167
16												
17												
18												
19												
20												

Handwritten summary of totals: 483, 680, 763, 14712, 150, 14862, 11706, 2416, 740.

Assessment and Tax List of Real Property in the Town of *Seymour* of *Seymour*



Cass County, Minnesota, for Taxes for the Year 1952.

Table with columns: IN WHOSE NAME ASSESSED, TO WHOM TRANSFERRED, DESCRIPTION OF PROPERTY, TRUE AND FULL VALUATIONS, ASSESSED VALUATIONS, VALUATIONS BY SCHOOL DISTRICTS, TAXES, PAID, WHEN PAID, etc. Includes handwritten entries for Michael A. + Olga M. Chamberlain, Joseph Troeppl, Edward + Susan Heikkinen, etc.

Assessment Roll and Tax List of Real Property in the County of Cass

Table with columns for Description of Property, True and Full Valuations, Assessed Valuations (Rural, All Other, Machinery), Total Assessed Value, and Final Equalized Value. Includes property details like subdivision, acreage, and owner names.

Cass County, Minnesota, for Taxes for the Year 1952.

Table for tax payments with columns for Sold for Taxes, Valuations by School Districts, Tax, State Tax on Non-Homestead, Special Taxes, Total Taxes, Paid When Paid, Number of Receipt, March, June, November Settlements, Penalties, Collections to First Monday, Delinquent on First Monday, Total Delinquent Tax and Penalty, and Remarks.

Assessment Roll and Tax List of Real Property in the Town of Sylvan

Cass County, Minnesota, for Taxes for the Year 1952.

Table with columns: IN WHOSE NAME ASSESSED, TO WHOM TRANSFERRED, DESCRIPTION OF PROPERTY, TRUE AND FULL VALUATIONS, ASSESSED VALUATIONS, FINAL EQUALIZED VALUE. Includes handwritten entries for Hardy Lake Camp, Ole Peterson, Gordon H. Rasmussen, etc.

Table with columns: VALUATIONS BY SCHOOL DISTRICTS AS EQUALIZED BY DEPARTMENT OF TAXATION, Tax Including State Homestead, SPECIAL TAXES, TOTAL TAXES, PAID, WHEN PAID, Number of Receipts, March Settlement, June Settlement, November Settlement, Collection on First Monday in January, Delinquent on First Monday in January, Total Delinquent Tax and Penalty, REMARKS. Includes handwritten entries for 'PAID IN FULL' and various tax amounts.

132-29
133-29

VILLAGE OF SYLVAN
STANLEY BEACH
LAND & ALLEN'S
ADD'N TO SYLVAN

Assessment Roll and Tax List of Real Property in the Town of Sylvia

Table with columns: IN WHOSE NAME ASSESSED, TO WHOM TRANSFERRED, DESCRIPTION OF PROPERTY, TRUE AND FULL VALUATIONS, ASSESSED VALUATIONS, FINAL EQUALIZED VALUE. Includes handwritten entries for N. W. Paper Co., Ralph A. & Cora Agnes Cole, State of Minnesota, Allen Rogers, and Edwin L. Hubins.

Cass County, Minnesota, for Taxes for the Year 1952.

Table with columns: SOLD FOR TAXES, VALUATIONS BY SCHOOL DISTRICTS AS EQUALIZED BY DEPARTMENT OF TAXATION, Tax including State Homestead, State Tax on Non-Homestead, SPECIAL TAXES, TOTAL TAXES, PAID, WHEN PAID, Number of Receipt, March Settlement 1953, June Settlement 1953, November Settlement 1953, Collections to First Monday in January 1954, Delinquent on First Monday in January 1954, Total Delinquent Tax and Penalty, REMARKS. Includes handwritten entries for 17.18 Cancelled and 17.18.

132-29

133-30

VILLAGE OF SYLVIA, CARLTON'S STEVIA PARK, SYLVIA BEACH, LAND & ALDEN'S LA...

Assessment Roll and Tax List of Real Property in the Town of Sylvan

Cass County, Minnesota, for Taxes for the Year 1952.

Table with columns: IN WHOSE NAME ASSESSED, TO WHOM TRANSFERRED, DESCRIPTION OF PROPERTY, TRUE AND FULL VALUATIONS, ASSESSED VALUATIONS, VALUATIONS BY SCHOOL DISTRICTS AS EQUALIZED BY DEPARTMENT OF TAXATION, SOLD FOR TAXES, PAID, WHEN PAID, Number of Receipt, March Settlement 1953, June Settlement 1953, Penalty, November Settlement 1953, Penalty, Collections to First Monday in January 1954, Penalty, Delinquent on First Monday in January 1954, Total Delinquent Tax and Penalty, REMARKS.

132-29

133-29

133-30

132-29

133-29

133-30

PLATAGE OF SYLVAN, CARLTON'S SYLVAN PARK, SYLVAN BEACH, ADD'N TO SYLVAN

Assessment Roll and Tax List of Real Property in the Town of Ashburn

IN WHOSE NAME ASSESSED	TO WHOM TRANSFERRED	DESCRIPTION OF PROPERTY			TRUE AND FULL VALUATIONS				ASSESSED VALUATIONS					FINAL EQUALIZED VALUE			
		SUBDIVISION	Sec. or Lot	Town or Block	No. of Acres of Land	LAND Exclusive of Structures and Improvements	BUILDINGS and Other Structures	MACHINERY Permanently Attached to Real Estate	TOTAL True and Full Value	RURAL		ALL OTHER			MACHINERY Permanently Attached to Real Estate	TOTAL ASSESSED VALUE	Total Assessed Value as Equalized by the Board of Review
										Homestead Up to \$1,000	Over \$1,000 and Non-Homestead	Homestead Up to \$4,000	Over \$4,000 and Non-Homestead				
St. Olaf College	less Ref	NE 1/4 of NE 1/4	14 123 30	30	710	231	210	231		77			27	70	27		
Jac J & Zella M. Schutt		NW 1/4 of NE 1/4		27 42	4/2	180	350	530	106				106	97	106		
St. Olaf College		SW 1/4 of NE 1/4		40	70	264		264		88			88	80	88		
"		SE 1/4 of NE 1/4		40	"	438		438		146			146	133	146		
Minnesota Power & Light Co.	1.9 ac. of NW 1/4 of NW 1/4 of d. 14			190	"	15		15		5			5	5	5		
Jac J & Zella M. Schutt	less Ref & less 1.19 ac. Homestead Rights to Minn. Power & Light Co.	NE 1/4 of NW 1/4		25 57	4/2	170		170	34				34	31	34		
"		NW 1/4 of NW 1/4		39 14	"	445		445	89				89	81	89		
St. Olaf College	Lot 1 less Ref	SW 1/4 of NW 1/4		44 45	710	339		339		113			113	103	113		
"		SE 1/4 of NW 1/4		40	"	306		306		102			102	93	102		
Minnesota Power & Light Co.	13.7 ac. of NW 1/4 of d. 14			1370	"	150		150		50			50	46	50		
St. Olaf College	less 17.75 ac. Homestead Rights to Minn. Power & Light Co.	NE 1/4 of SW 1/4		22 25	"	189		189		63			63	57	63		
"		NW 1/4 of SW 1/4		50 90	"	504		504		168			168	153	168		
"		SW 1/4 of SW 1/4		52 79	"	447		447		149			149	135	149		
"		SE 1/4 of SW 1/4		865	"	84		84		28			28	25	28		
Minnesota Power & Light Co.	4.05 ac. of NW 1/4 of d. 14			405	"	42		42		14			14	13	14		
St. Olaf College	Lot 7	NE 1/4 of SE 1/4		32 50	"	354		354		118			118	107	118		
"		NW 1/4 of SE 1/4		33 75	"	291		291		97			97	88	97		
"		SW 1/4 of SE 1/4			"	264		264		88			88		88		
"		SE 1/4 of SE 1/4			"												
Ernie B. Anderson	8 acres of NW 1/4 of d. 14 and of Lot 5			8	"	237	599	816		272			272	247	272		
						216	525	741		247			247	229	247		
						468	928	5615	229	1571			1571	1490	1571		
						4260	845	5110	229	1585			1585	1564	1585		

Cass County, Minnesota, for Taxes for the Year 1952.

SOLD FOR TAXES	VALUATIONS BY SCHOOL DISTRICTS AS EQUALIZED BY DEPARTMENT OF TAXATION						Tax including State Homestead	State Tax on Non-Homestead	SPECIAL TAXES	TOTAL TAXES	PAID	WHEN PAID	Number of Receipt	March Settlement 1953	June Settlement 1953	Penalty	November Settlement 1953	Penalty	Collections to First Monday in January 1954	Penalty	Delinquent on First Monday in January 1954	Total Delinquent Tax and Penalty	REMARKS		
	District No.	Rate	District No.	Rate	District No.	Rate																			
	Dollars	Dollars	Dollars	Dollars	Dollars	Dollars																			
1							14 86	18		15 04	1 PAID IN FULL	MAY 29 1953	8808												
2							20 44			20 44	2 PAID IN FULL	APR 14 1953	8232												
3							16 98	20		17 18	3 PAID IN FULL	MAY 29 1953	8808												
4							28 16	32		28 48	4 PAID IN FULL	MAY 29 1953													
5							9 6	-		9 6	5 PAID IN FULL	MAY 29 1953	8266												
6							6 56			6 56	6 PAID IN FULL	APR 14 1953	8232												
7							17 16			17 16	7 PAID IN FULL	APR 14 1953													
8							21 80	26		22 06	8 PAID IN FULL	MAY 29 1953	8808												
9							19 68	24		19 92	9 PAID IN FULL	MAY 29 1953													
10							9 64	12		9 76	10 PAID IN FULL	MAY 29 1953	8266												
11							12 16	14		12 30	11 PAID IN FULL	MAY 29 1953													
12							32 40	38		32 78	12 PAID IN FULL	MAY 29 1953	8808												
13							28 74	34		29 08	13 PAID IN FULL	MAY 29 1953													
14							5 40	06		5 46	14 PAID IN FULL	MAY 29 1953													
15							2 70	04		2 74	15 PAID IN FULL	MAY 29 1953	8266												
16							22 76	26		23 02	16 PAID IN FULL	MAY 29 1953	8808												
17							18 70	22		18 92	17 PAID IN FULL	MAY 29 1953													
18																									
19																									
20							52 46	62		53 08	20 PAID IN FULL	MAY 29 1953	8808												
							331 56	338		334 94															

ST. OLAF COLLEGE, ST. OLAF PARK, ST. OLAF BEACH, ST. OLAF LAND & ALLEN'S PARK

Assessment Roll and Tax List of Real Property in the Town of Sylvan

Cass County, Minnesota, for Taxes for the Year 1952.

Table with columns for Description of Property, True and Full Valuations, Assessed Valuations, Final Equalized Value, Sold for Taxes, and Valuations by School Districts. Includes handwritten entries for Minnesota Power & Light Co. and St. Olaf College.

132-29

133-29

133-30

ST. PILLAGE OF SYLVAN, LAND EASEMENTS 3rd ADDITION TO SYLVAN BEACH, CARLTON'S SYLVAN PARK

Assessment Roll and Tax List of Real Property in the _____ of _____

IN WHOSE NAME ASSESSED	TO WHOM TRANSFERRED	DESCRIPTION OF PROPERTY				TRUE AND FULL VALUATIONS								REMARKS			
		SUBDIVISION	Sec. or Lot	Town or Block	Rtg.	Number of Acres of Land		No. of Improved District	Indicate Homestead Yes or No	Indicate Agricultural Yes or No	LAND Exclusive of Structures and Improvements	BUILDINGS and Other Structures	MACHINERY Permanently Attached to Real Estate		TOTAL True and Full Value	RURAL	
						Acres	100ths									Homestead Up to \$4,000 20%	Over \$4,000 and Non-Homestead 33 1/3%
		1	NE 1/4 of NE 1/4														
		2	NW 1/4 of NE 1/4														
		3	SW 1/4 of NE 1/4														
		4	SE 1/4 of NE 1/4														
		5															
		6	NE 1/4 of NW 1/4														
		7	NW 1/4 of NW 1/4														
		8	SW 1/4 of NW 1/4														
		9	SE 1/4 of NW 1/4														
		10															
		11	NE 1/4 of SW 1/4														
		12	NW 1/4 of SW 1/4														
		13	SW 1/4 of SW 1/4														
		14	SE 1/4 of SW 1/4														
		15															
		16	NE 1/4 of SE 1/4														
		17	NW 1/4 of SE 1/4														
		18	SW 1/4 of SE 1/4														
		19	SE 1/4 of SE 1/4														
		20															

PAGES

44

THRU

50

BLANK

Cass County, Minnesota, for Taxes for the Year 1952.

No. of Property	District	Tax Including State Homestead	State Tax on Non-Homestead	SPECIAL TAXES	TOTAL TAXES	PAID	WHEN PAID	Number of Receipts	March	June	November	Penalty	Penalty	Penalty	Delinquent on First Monday in January 1954	Total Delinquent Tax and Penalty	REMARKS
									Settlement 1952	Settlement 1953	Settlement 1953	Penalty	Penalty	Penalty	Penalty		
									\$ cts.	\$ cts.	\$ cts.	\$ cts.	\$ cts.	\$ cts.	\$ cts.		
1																	
2																	
3																	
4																	
5																	
6																	
7																	
8																	
9																	
10																	
11																	
12																	
13																	
14																	
15																	
16																	
17																	
18																	
19																	
20																	

132-29

133-29

133-30

VILLAGE OF SYLVAN
AND ELLIENS 3rd ADDN
CARLSON'S SYLVAN
SYLVAN BEACH
LAND & ALLEN'S 3rd ADDN TO SYLVAN BEACH

Assessment Roll and Tax List of Real Property in the *Town of Sylva* of *Sylvania*

Cass County, Minnesota, for Taxes for the Year 1952.

Form 30 (85)		DESCRIPTION OF PROPERTY				TRUE AND FULL VALUATIONS							ASSESSED VALUATIONS					FINAL EQUALIZED VALUE	VALUATIONS BY SCHOOL DISTRICTS AS EQUALIZED BY DEPARTMENT OF TAXATION							SPECIAL TAXES	TOTAL TAXES	PAID	WHEN PAID	Number of Receipt	March Settlement 1953	June Settlement 1953	November Settlement 1953	Collections to First Monday in January 1954	Delinquent on First Monday in January 1954	Total Delinquent Tax and Penalty	REMARKS		
IN WHOSE NAME ASSESSED	TO WHOM TRANSFERRED	Subdivision	Sec. of Lot	Town or Block	No. Acres	710% LAND EXCLUSIVE OF IMPROVEMENTS	10% BUILDINGS AND OTHER STRUCTURES	MACHINERY PERMANENTLY ATTACHED TO REAL ESTATE	TOTAL True and Full Value	RURAL		ALL OTHER		MACHINERY Permanently Attached to Real Estate	TOTAL ASSESSED VALUE	Total Assessed Value as Equalized by the Board of Review	District No.		District Rate	District No.	District Rate	District No.	District Rate	Tax Including State Homestead	State Tax on Non-Homestead														
										Rate	Mills	Rate	Mills				Rate		Mills	Rate	Mills	Rate	Mills	\$	cts.														
Charles H. Johnson	"	Village of Sylva	24	1	1.15		6		6		2			2	2	1 SOLD FOR TAXES							38	-	38	1 PAID IN FULL MAY 29 1953													
"	"	"	22				6	24	30		10			9	9	2 SOLD FOR TAXES							192	.02	194	2 PAID IN FULL MAY 29 1953													
George M. & Bernice V. Wilder	"	"	1	2			5		5		1			7	7	3							20		20	3 PAID IN FULL MAY 29 1953													
"	"	"	2				5		5		1			4	4	4							20		20	4 PAID IN FULL MAY 29 1953													
"	"	"	3				5		5		1			1	1	5							20		20	5 PAID IN FULL MAY 29 1953													
Jack E. & Ellen J. Marlow	"	"	4				6		6		2			2	2	6 SOLD FOR TAXES							38	-	38	6													
"	"	"	5				6		6		2			2	2	7 SOLD FOR TAXES							38	-	38	7													
Town of Sylva	George M. Wilder	Lot 6 to 11 Ave														8																							
"	"	"	15				6		6		3			2	2	9							38	-	38	9 PAID IN FULL MAY 29 1953													
"	"	"	16				6		6		2			2	2	10							38	-	38	10 PAID IN FULL MAY 29 1953													
"	"	"	17				5	61	60		23			22	22	11							424	104	428	11 PAID IN FULL MAY 29 1953													
Geo. M. & Bernice V. Wilder	"	"	18				5		5		1			1	1	12							20		20	12 PAID IN FULL MAY 29 1953													
"	"	"	19				5	490	425		95			95	95	13							1832		1832	13 PAID IN FULL MAY 29 1953													
State of Minnesota - George M. Wilder	"	"	20				5		5		1			1	1	14							20		20	14 PAID IN FULL MAY 29 1953													
State of Minnesota	"	"	21				5		5		1			1	1	15							20		20	15 PAID IN FULL MAY 29 1953													
State of Minnesota	"	"	22				5		5		1			1	1	16							20		20	16 PAID IN FULL MAY 29 1953													
																17																							
																18																							
																19																							
																20																							
									81	325		584	102	22	39	744							2778	06	2784													76	

132-29

133-29

133-30

VILLAGE OF SYLVAN

SILVAN SHA... NORTH SYLVAN... CARLTON'S SYLVAN... SYLVAN BEACH... LAND & ALLEN'S 1st... ADD'D TO SYLVAN BEACH

Cass County, Minnesota, for Taxes for the Year 1952.

Assessment Roll and Tax List of Real Property in the Town of Sylvan of Sylvan

Main table with columns for IN WHOSE NAME ASSESSED, TO WHOM TRANSFERRED, DESCRIPTION OF PROPERTY, TRUE AND FULL VALUATIONS, ASSESSED VALUATIONS, VALUATIONS BY SCHOOL DISTRICTS AS EQUALIZED BY DEPARTMENT OF TAXATION, TAXES, PAID, WHEN PAID, Number of Receipt, March Settlement 1953, June Settlement 1953, November Settlement 1953, Collections to First Monday in January 1954, Delinquent on First Monday in January 1954, Total Delinquent Tax and Penalty, REMARKS.

(Continued on next page)

132-29

133-29

133-30

Sylvan Shady Shores and Aileen's 2nd to Sylvan Beach and Aileen's 3rd Add'n to Sylvan Beach Sylvan Beach

LAND & AILEEN'S 1st ADD'N TO SYLVAN BEACH

Assessment Roll and Tax List of Real Property in the Town of Sylvan

IN WHOSE NAME ASSESSED	TO WHOM TRANSFERRED	DESCRIPTION OF PROPERTY			No. School District	Indicate Homestead Tax or No	Indicate Agricultural Tax or No	TRUE AND FULL VALUATIONS					ASSESSED VALUATIONS					FINAL EQUALIZED VALUE	
		SUBDIVISION	Sec. or Lot	Town or Block				Number of Acres of Land	Machinery Permanently Attached to Real Estate	BUILDINGS and Other Structures	LAND Exclusive of Structures and Improvements	RURAL		ALL OTHER		Machinery Permanently Attached to Real Estate 33 1/3%	TOTAL ASSESSED VALUE		Total Assessed Value as Equalized by the Board of Review
												Homestead Up to \$1,000 20%	Over \$1,000 and Non-Homestead 33 1/3%	Homestead Up to \$1,000 25%	Over \$1,000 and Non-Homestead 40%				
Chas. R. & Mabel M. Woodhouse		Carlson's Sylvan Park	49				27					27			8				
"	"	"	50				27					27			8				
"	"	"	51				27					27			8				
"	"	"	52				27					27			8				
Edwin P. Garrison			53				110	220				330	110		110				
Dan & Mary Michauds			54				83	82				165	55		55				
Geo. M. & Bernice J. Wilder			55				220	409				689	228		228				
State of Minnesota			56																
State of Minnesota			57																
State of Minnesota			58																
Chas. Johnson			59		760		24					24			8				
State of Minnesota			60																
State of Minnesota			61																
State of Minnesota			62																
State of Minnesota			63																
State of Minnesota			64																
State of Minnesota			65																
							545	268	1314	438		438			438				
							492	699	1191	397		397			397				

SOLD FOR TAXES	VALUATIONS BY SCHOOL DISTRICTS AS EQUALIZED BY DEPARTMENT OF TAXATION						Tax including State Homestead	State Tax on Non-Homestead	SPECIAL TAXES	TOTAL TAXES	PAID	WHEN PAID	Number of Receipt	March Settlement 1953	June Settlement 1953	Penalty	November Settlement 1953	Penalty	Collections to First Monday in January 1951	Penalty	Delinquent on First Monday in January 1951	Total Delinquent Tax and Penalty	REMARKS
	District No.	District No.	District No.	District No.	District No.	District No.																	
	Rate	Rate	Rate	Rate	Rate	Rate																	
1						9	196	02	198	1 PAID IN FULL	JAN 13 1953												
2						9	196	02	198	2 PAID IN FULL	JAN 13 1953												
3						9	196	02	198	3 PAID IN FULL	JAN 13 1953												
4						9	196	02	198	4 PAID IN FULL	JAN 13 1953												
5						110	2396	24	2420	5 Balance Paid	OCT 31 1953 MAY 29 1953	14831 8/28		1220								1200	
6						55	1198	12	1210	6 PAID IN FULL	MAR 24 1953	3659		1210									
7						229	4990	52	5042	7 PAID IN FULL	MAY 29 1953	8112		5042									
8																							
9																							
10																							
11	SOLD FOR TAXES					8	154	02	156													156	
12																							
13																							
14																							
15																							
16																							
17																							
18																							
19																							
20																							
							8	430 = 438	9368	98	9620			792	7872	1200					156		
									9524														

SILVAN NORTH SILVAN CARLTON'S SILVAN PARK

SILVAN SHADY SHOES AND ALLEN'S 2nd TO SILVAN BEACH AND CHILDREN 3rd ADD'L TO SILVAN BEACH SILVAN BEACH LAND & ALLEN'S BEACH ADD'L TO SILVAN BEACH

Assessment Roll and Tax List of Real Property in the Town of Sylwan

Cass County, Minnesota, for Taxes for the Year 1952.

Form 5C(52)	IN WHOSE NAME ASSESSED	TO WHOM TRANSFERRED	DESCRIPTION OF PROPERTY					TRUE AND FULL VALUATIONS								ASSESSED VALUATIONS					FINAL EQUALIZED VALUE		
			SUBDIVISION	Sec. of Lot	Town or Block	Ref.	Number of Acres of Land	No. School District	Indicate Homestead Tax or No	Indicate Agricultural Tax or No	70% LAND Excludes of Structures and Improvements		TOTAL True and Full Value	RURAL		ALL OTHER		MACHINERY Permanently Attached to Real Estate 33 1/3%	TOTAL ASSESSED VALUE	Total Assessed Value as Equalized by the Board of Review			
											Dollars	Dollars		Dollars	Dollars	Homestead Up to \$4,000 20%	Over \$4,000 and Non-Homestead 33 1/3%					Homestead Up to \$4,000 25%	Over \$4,000 and Non-Homestead 40%
																Dollars	Dollars					Dollars	Dollars
	Carlson's Sylwan Park																						
	<i>Orell Leen</i>			66			29.154			9		3											
				67					9		3												
				68					9		3												
				69					9		3												
				70					9		3												
				71					9		3												
	State of Minnesota			72																			
	State of Minnesota			73																			
	State of Minnesota			74																			
	State of Minnesota			75																			
	State of Minnesota			76																			
	State of Minnesota			77																			
	State of Minnesota			78																			
	State of Minnesota			79																			
	<i>Ruth Bremnes</i>			80					110 100	790 725	900 825	150 165				180 165							

SOLD FOR TAXES	VALIDATIONS BY SCHOOL DISTRICTS AS EQUALIZED BY DEPARTMENT OF TAXATION						Tax including State Homestead	State Tax on Non-Homestead	SPECIAL TAXES	TOTAL TAXES	PAID	WHEN PAID	Number of Receipt	March Settlement 1953	June Settlement 1953	Penalty	November Settlement 1953	Penalty	Collections to First Monday in January 1954	Penalty	Delinquent on First Monday in January 1954	Total Delinquent Tax and Penalty	REMARKS
	District No.	District No.	District No.	District No.	District No.	District No.																	
	Rate	Rate	Rate	Rate	Rate	Rate																	
	Mills	Mills	Mills	Mills	Mills	Mills																	
	1						58		58														
	2						58		58														
	3						58		58														
	4						58		58														
	5						58		58														
	6						58		58														
	7																						
	8																						
	9																						
	10																						
	11																						
	12																						
	13																						
	14																						
	15								3472		3472		15 PAID IN FULL	MAY 29 1953	8/22	3472							
	16																						
	17																						
	18																						
	19																						
	20								3820		3820												

132-29 SYLVAN
 133-29 NORTH SYLVAN
 133-30 CARLYON'S SYLVAN PARK

Sylvan Shady Shores and Allen's 2nd ADDN TO SYLVAN BEACH
 AND GARDNER'S 3rd ADDN TO SYLVAN BEACH
 SYLVAN BEACH
 LAND & ALLEN'S 1st ADDN TO SYLVAN BEACH

Assessment Roll and Tax List of Real Property in the Town of Sylvan

Table with columns: IN WHOSE NAME ASSESSED, TO WHOM TRANSFERRED, SUBDIVISION, DESCRIPTION OF PROPERTY, TRUE AND FULL VALUATIONS (LAND, BUILDINGS, MACHINERY), ASSESSED VALUATIONS (RURAL, ALL OTHER, MACHINERY), TOTAL ASSESSED VALUE, FINAL EQUALIZED VALUE.

Cass County, Minnesota, for Taxes for the Year 1952.

Table with columns: VALUATIONS BY SCHOOL DISTRICTS AS EQUALIZED BY DEPARTMENT OF TAXATION, Tax including State Homestead, State Tax on Non-Homestead, SPECIAL TAXES, TOTAL TAXES, PAID, WHEN PAID, Number of Receipt, March Settlement, June Settlement, November Settlement, Collections to First Monday in January, Delinquent on First Monday in January, Total Delinquent Tax and Penalty, REMARKS.

Assessment Roll and Tax List of Real Property in the Town of Sylvan

Cass County, Minnesota, for Taxes for the Year 1952.

Table with columns: IN WHOSE NAME ASSESSED, TO WHOM TRANSFERRED, SUBDIVISION, DESCRIPTION OF PROPERTY, TRUE AND FULL VALUATIONS (LAND, BUILDINGS, MACHINERY), ASSESSED VALUATIONS (RURAL, ALL OTHER, MACHINERY), VALUATIONS BY SCHOOL DISTRICTS AS EQUALIZED BY DEPARTMENT OF TAXATION, Tax including State Homestead, SPECIAL TAXES, TOTAL TAXES, PAID, WHEN PAID, Number of Receipts, March Settlement, June Settlement, November Settlement, Penalty, Collections to First Monday in January 1954, Delinquent on First Monday in January 1954, Total Delinquent Tax and Penalty, REMARKS.

Sylvan Beach

Sec. State Bank, Allagen Co. R. Manning, 38.1, 39, 40, 41, 42, 43, 44, 45, 46, 47, 48, 49, 50, 51, 52, 53, 54, 55, 56

Handwritten totals for assessed values: 1477, 432, 432

Handwritten totals for taxes: 7036, 2968, 10004, 104.02

Vertical text on the right edge of the page, including 'SYLVAN SHADY SHOES' and 'LAND & ALLEN'S 2nd'.

Assessment Roll and Tax List of Real Property in the Town of Sylvan

Cass County, Minnesota, for Taxes for the Year 1952.

Table with columns for property description, valuations (True and Full, Assessed), taxes (School Districts, State, Special, Total), and payment status. Includes handwritten entries for names like John Rossy, Frank & Alice M. Allen, and various lot numbers.

Vertical text on the left margin: SYLVAN, NORTH SYLVAN, CARLYON'S SYLVAN PARK, SYLVAN BEACH, ALLEN'S 1st ADDN TO SYLVAN BEACH

Vertical text on the right margin: SYLVAN SHADY SHORES, ALLEN'S 2nd ADDN TO SYLVAN BEACH, ALLEN'S 3rd ADDN TO SYLVAN BEACH

Assessment Roll and Tax List of Real Property in the Town of Sylvan

Cass County, Minnesota, for Taxes for the Year 1952.

Table with columns: IN WHOSE NAME ASSESSED, TO WHOM TRANSFERRED, SUBDIVISION, DESCRIPTION OF PROPERTY, TRUE AND FULL VALUATIONS, ASSESSED VALUATIONS, VALUATIONS BY SCHOOL DISTRICTS AS EQUALIZED BY DEPARTMENT OF TAXATION, SOLD FOR TAXES, PAID, WHEN PAID, Number of Receipt, March Settlement 1953, June Settlement 1953, November Settlement 1953, Collections to First Monday in January 1954, Delinquent on First Monday in January 1954, Total Delinquent Tax and Penalty, REMARKS.

132-29, 133-29, 133-30, CARLTON'S SYLVAN PARK, SYLVAN BEACH, ALLEN'S 1st ADDN TO SYLVAN BEACH

LAND & ALLEN'S 2nd ADDN TO SYLVAN BEACH, LAND & ALLEN'S 3rd ADDN TO SYLVAN BEACH

Assessment Roll and Tax List of Real Property in the Town of Sylvan

Cass County, Minnesota, for Taxes for the Year 1952.

Table with columns for IN WHOSE NAME ASSESSED, TO WHOM TRANSFERRED, DESCRIPTION OF PROPERTY, TRUE AND FULL VALUATIONS, ASSESSED VALUATIONS, VALUATIONS BY SCHOOL DISTRICTS, TAXES, PAID, WHEN PAID, and REMARKS. Includes handwritten entries for John W. McWhister, D. & Florence Schmidt, Elmer E. Erickson, William B. Brunson, etc.

133-29 NORTH ST SYLVAN SHADY SHORES 133-30 CARLTON'S SYLVAN PARK SYLVAN BEACH LAND & ALLEN'S 1st ADD'N TO SYLVAN BEACH

LAND & ALLEN'S 2nd ADD'N TO SYLVAN BEACH LAND & ALLEN'S 3rd ADD'N TO SYLVAN BEACH

Assessment Roll and Tax List of Real Property in the Town of Sylvan

Table with columns: IN WHOSE NAME ASSESSED, TO WHOM TRANSFERRED, SUBDIVISION, No. School District, Indicate Homestead, Indicate Agricultural, TRUE AND FULL VALUATIONS (LAND, BUILDINGS, MACHINERY, TOTAL), ASSESSED VALUATIONS (RURAL, ALL OTHER, MACHINERY, TOTAL ASSESSED), FINAL EQUALIZED VALUE.

Cass County, Minnesota, for Taxes for the Year 1952.

Table with columns: SOLD FOR TAXES, VALUATIONS BY SCHOOL DISTRICTS AS EQUALIZED BY DEPARTMENT OF TAXATION, Tax Including State Homestead, State Tax on Non-Homestead, SPECIAL TAXES, TOTAL TAXES, PAID, WHEN PAID, Number of Receipt, March Settlement 1953, June Settlement 1953, November Settlement 1953, Penalty, Collections to First Monday in January 1954, Delinquent on First Monday in January 1954, Total Delinquent Tax and Penalty, REMARKS.

132-29 133-29 133-30 CARLYON'S SYLVAN PARK SYLVAN BEACH LAND & ALLEN'S 1st ADD'N TO SYLVAN BEACH

LAND & ALLEN'S 2nd ADD'N TO SYLVAN BEACH LAND & ALLEN'S 3rd ADD'N TO SYLVAN BEACH

Assessment Roll and Tax List of Real Property in the _____ of _____

Cass County, Minnesota, for Taxes for the Year 1952.

Form 30 (32)

IN WHOSE NAME ASSESSED	TO WHOM TRANSFERRED	DESCRIPTION OF PROPERTY					TRUE AND FULL VALUATIONS										ASSESSED VALUATIONS										FINAL EQUALIZED VALUE
		SUBDIVISION	Sec. or Lot	Town or Block	Rng.	Number of Acres of Land	LAND Exclusive of Structures and Improvements	BUILDINGS and Other Structures	MACHINERY Permanently Attached to Real Estate	TOTAL True and Full Value	RURAL		ALL OTHER		MACHINERY Permanently Attached to Real Estate	TOTAL ASSESSED VALUE	Total Assessed Value as Equalized by the Board of Review	Dollars									
											Acres	100th	Homestead Up to \$4,000 20%	Over \$4,000 and Non-Homestead 33 1/3%					Homestead Up to \$4,000 25%	Over \$4,000 and Non-Homestead 40%	Dollars	Dollars					
						147 039	224 992		465 625	208 88	89 197				141 283												
						336 48	204 098	93 594	431 340	139 78	80 950		31 198		131 128												
	Grand Total				18, 605 89																						
						147 039			465 625	208 88	89 197				141 283												
						845	Forfeiture		- 845	- 85	- 140				- 225												
						146 194	total		464 780	208 03	89 057				141 058	total											

SOLD FOR TAXES	VALUATIONS BY SCHOOL DISTRICTS AS EQUALIZED BY DEPARTMENT OF TAXATION						Tax including State Homestead	State Tax on Non-Homestead	SPECIAL TAXES	TOTAL TAXES	PAID	WHEN PAID	Number of Receipt	March Settlement 1953	June Settlement 1953	Penalty 1953	November Settlement 1953	Penalty 1953	Collections to First Monday in January 1954	Penalty 1954	Delinquent on First Monday in January 1954	Total Delinquent Tax and Penalty	REMARKS
	District No.	District No.	District No.	District No.	District No.	District No.																	
	Rate	Rate	Rate	Rate	Rate	Rate																	
	Mills	Mills	Mills	Mills	Mills	Mills																	
							22 Mills																

132-29
 133-29
 133-30
 SILVAN SHADY SHORES
 LAND & ALLEN'S 1st ADD'N TO SILVAN BEACH
 LAND & ALLEN'S 3rd ADD'N TO SILVAN BEACH
 SILVAN BEACH
 LAND & ALLEN'S 1st ADD'N TO SILVAN BEACH