

ASSESSMENT & TAX LIST

Sylvan

1948

SUMMARY OF TAX COLLECTION

Original Levy	- - - - -	\$27,667.24
Additions	- - - - -	3.74
CANCELLATIONS		
	- - - - -	49.84
Abatements	- - - - -	108.65
	- - - - -	27,512.49

COLLECTIONS

March Settlement	- - - - -	\$1,222.22
June Settlement	- - - - -	\$13,472.02
November Settlement	- - - - -	\$14,026.65
January Settlement	- - - - -	\$197.76
	- - - - -	\$
Over Collected	- - - - -	\$23.44
Under Collected	- - - - -	\$
Delinquent	- - - - -	\$1567.25
Total	- - - - -	\$27,512.49

REAL
 Village of Sylva
 North Sylva
 Sylva Shady Grove

Treasurer's Office, Cass County, Minnesota

RECEIVED this, the first Monday (being the 3rd day) of January, A. D. 1949, of L. C. Peterson, Auditor of said County, Minnesota, the Tax List of all Taxable Real and Personal Property in the Town of Sylvan in said County for the year A. D. 1948, as specified above and amounting to 100 Dollars

Paul D. Jewell
County Treasurer.

Office of County Treasurer, Cass County, Minnesota

To L. C. Peterson, County Auditor:

Sir: I herewith return to you the Tax List for the Town of Sylvan in said County for the year 1948, heretofore received from you. I certify that I have compared the same with the duplicate receipts in your office, and have written opposite the amount of each tax so received the words "First Quarter Paid", "Second Quarter Paid", "Third Quarter Paid" or "Paid in full" as the case may be, and the number of my receipt given in discharge of said tax, and each tract or lot of real property against which the taxes remain unpaid and delinquent for said year.

Yours respectfully,
Paul D. Jewell
County Treasurer.

Auditor's Office, Cass County, Minnesota

I, _____ Auditor of said County, and State of Minnesota, do hereby certify that the following is a correct list of the Taxes levied on the Real and Personal Property in the _____ of _____ for the year 1948.

WITNESS my hand and official seal, the _____ day of _____ 1949.

(SEAL) _____ County Auditor.

Auditor's Office, Cass County, Minnesota

I hereby certify that on the first Monday in January 1950, I received of _____ 194 _____ County Treasurer, the Tax List of the _____ of _____ in said County for the year 1948; that I have compared the said list with the Statements received for by said Treasurer, which are on file in my office, and that each tract or lot of real property therein against which the taxes, or any part thereof, remains unpaid are delinquent for said year.

(SEAL) _____ County Auditor.

133-29
REAL
Village of Sylvan
North Sylvan Lake
Sylvan Shady Shores

TABULAR SCHEDULE OF VALUATIONS,

LEVIED IN THE Township of Sylvan COUNTY OF CASS, STATE OF MINNESOTA

RATES AND TAXES

COUNTY OF CASS, STATE OF MINNESOTA

School District No.	VALUATION BY SCHOOL DISTRICTS				RATE OF COUNTY TAXES											RATE OF TOWN TAXES											RATE OF SCHOOL TAXES										
	Agri-cultural Lands	Non-Agri-cultural Lands	Personal Property	Total Value of all Property except Money and Credits	Rev.	R. & B.	W. fare	Bonds and Int.	SKg.	Total Rate of County Tax	Rev.	R. & B.	Drag Tax	State Loan	Deficiency	Tuition	Transportation	C.O.	Local	Special	State Loan	Deficiency	Tuition	Transportation	C.O.	Local	Special	State Loan	Deficiency	Tuition	Transportation	C.O.					
1	36356	44353	5539	86248	2.91	2.24	7.2	48.5	7.9	6.5	93.5	1.5	1.5	1.					17.5	1.	30.	40.3	1.8	12.5		85.6	199.51	3636	109072	146514	6544	45446					
13	47551		430	47981																																	
	83907	44353	5969	134229	N.H. 3.86																																
					6.77																																
Assessed Value	Rural	All Other	Personal Property	Total																																	
Homestead	21177			21177																																	
Non-Homestead	107,083		5969	113052																																	
Total	128,260		5969	134229																																	

LOCAL 1 MILL AND SPECIAL SCHOOL TAXES BY DISTRICTS											ALL OTHER TAXES				
Local 1 Mill	Special	State Loan	Def.	Tuition	C.O.	Total School Taxes	FUNDS	Rate	Amounts						
85.6	199.51	3636	109072	146514	6544	45446	State-Non-Homestead,		39060						
115.6	229.51	4989	299358	201068	8980	62365	State-Homestead,		43628						
63.8	172.71	4798	224556	68133	8637		County Revenue,		314096						
							County Road and Bridge,		96644						
							County Welfare,		651011						
							Bonds and Interest		106041						
									87249						
							Town Revenue,		20134						
							Town Road and Bridge,		201343						
							Town Drag,		13423						
							Town State Loan,								
							School Local 1 Mill,		13423						
							School Special,		632986						
							School State Loan,								
							Deficiency		347582						
							Tuition		681.33						
							Transportation		241.61						
							C.O.		1078.10						

Total Number of Acres 18,666
 State of Minnesota, Auditor of said County and State aforesaid, do hereby certify that the foregoing is a true and correct Schedule, showing the valuation of all the taxable property, in the Township of Sylvan in said County, the several rates of Taxation and Totals of the several Tax Funds levied thereon for the year A. D. 1948
 Witness my hand and official seal, this 10 day of Dec A. D. 1948
 J. C. Peterson County Auditor



Total Taxes Real Estate 26,296.32
 Pers. Prop. 1370.92
 Total 27,667.24

REAL ESTATE
 VILLAGE OF SYLVAN
 North Sylvan Lake
 Sylvan Sledgy Shore

FUNDS	MARCH SETTLEMENT 1949	JUNE SETTLEMENT 1949	NOV. SETTLEMENT 1949	Amount Collected from Nov. 1949 to First Monday in Jan. 1950	REDUCTIONS	Total Reductions and Collected	BALANCE UNCOLLECTED	ADDITIONS	Total Uncollected to First Monday in January, 1950
State—Non-Homestead,	1889	20704	19258	236					
State—Homestead,	553	19104	15667	278					
County Revenue,	12486	153621	125979	2235					
County Road and Bridge,	3842	47268	38763	688					
County Welfare,	25878	318403	261111	4632					
County Bond and Interest,	4215	51864	42533	754					
SK,	3468	42676	34894	621					
Town Revenue,	800	9848	8075	143					
Town Road and Bridge,	8004	98475	80756	1433					
Town Drag,	534	6565	5384	96					
Town State Loan,									
School Local 1 Mill,	584	6566	5382	95					
School Special,	30227	304743	259551	3352					
School State Loan,									
Deficiency	20833	169475	130478	3848					
Tuition	236	33507	9691						
Transportation	961	11816	40471	172					
G.O.	6462	52567	30474	1192					
	122222	1347202	1107668	19776					

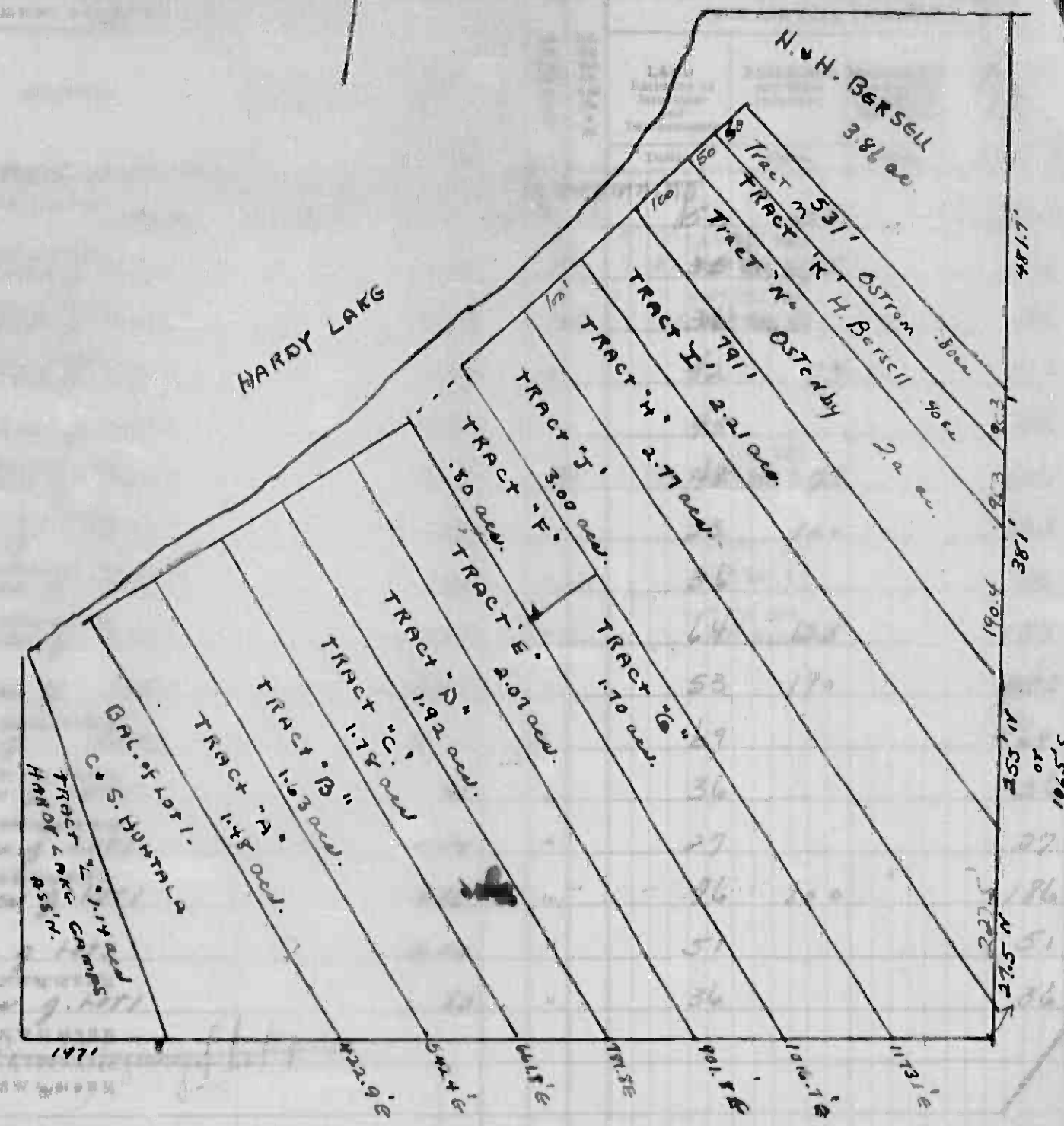
	SCHOOL DISTRICT NO.	LOCAL 1 MILL	SPECIAL	STATE LOAN	<i>Supp.</i>	<i>Trans.</i>	<i>G.O.</i>	<i>Int.</i>	TOTALS
MARCH SETTLEMENT	School District No. <i>A-1</i>	42	1265		1701	76	528		3612
	<i>na-1</i>	475	28485		19132	855	5734		54881
	<i>13</i>	17	777			30		236	1060
Totals		534	30227		20833	961	6462	236	59653
JUNE SETTLEMENT	School District No. <i>A-1</i>	8934	58006		77921	3480	24169		165570
	<i>na-1</i>	2272	138304		91554	489	28398		262617
	<i>13</i>	2360	110432			4247		33507	150547
Totals		6566	304743		169475	11816	52567	33507	572674
NOVEMBER SETTLEMENT	School District No. <i>A-1</i>	1171	35144		47210	2009	14643		100277
	<i>na-1</i>	2066	123972		83268	3715	23728		238853
	<i>13</i>	2146	100435			3263		30474	136915
Totals		5383	259551		130478	9691	40471	30474	476048
NOVEMBER to JANUARY	School District No. <i>A-1</i>	79	2379		3196	143	991		6788
	<i>na-1</i>	16	993		652	29	202		1872
	Totals		95	3352		3848	172	1193	
ADDITIONS	School District No.								
Totals									
REDUCTIONS	School District No.								
Totals									

REAL ESTATE
 Village of Sylvan
 North Sylvan Lake
 Sylvan Study Acres
 133-29
 130

Sylvan

IN WHOSE NAME ASSESSED TO WHOM TRANSFERRED

Michael J. & Olga A. Chamberlain
 Kare & Sandra Huhtala
 Joseph & Martha Keppel (Tract A)
 " " B
 Edward & Susan Heikkinen " C
 Edward & Evangeline Johnson " D
 John A. & Frieda Johnson " E
 Merrill & Inez Kasev " F
 Wm. N. & Mary Goodwater " G
 Julius & Anna Peterson
 Joseph & Hanna Hill " H
 Sigurd & Myra Linder " I
 Wm. & Mary Goodwater " J
 Hugo & Hilda Bersell " K
 Hardy Lake Camp Assoc. Inc. " L
 Hugo & Hilda Bersell " M
 Elaine & Vernon E. Osterby " N
 Nelding J. & Eunice E. Osterby " O
 Hirsell & Olga A. Chamberlain " P



ASSESSED VALUATIONS							FINAL EQUALIZED VALUE
RURAL	ALL OTHER		MACHINERY	TOTAL	Total Assessed Value as Equivalent by the Board of Review	Dollars	
Homestead to \$4,000 10%	Over \$4,000 and Non-Homestead 33 1/3%	Homestead Up to \$4,000 25%	Over \$4,000 and Non-Homestead 40%	Permanently Attached to Real Estate 33 1/3%	Dollars	Dollars	

60	47					
36	36					
12	12					
39	39					
15	15					
41	41					
41	41					
12	12					
63	63					
81	81					
23	23					
12	12					
9	9					
62	62					
17	17					
12	12					

30 28 736 890 1626 542 542

SOLD FOR TAXES	VALUATIONS BY SCHOOL DISTRICTS AS EQUALIZED BY DEPARTMENT OF TAXATION						Tax including State Homestead	State Tax on Non-Homestead	SPECIAL TAXES	TOTAL TAXES	PAID	WHEN PAID	Number of Receipt	March Settlement 1949	June Settlement 1949	November Settlement 1949	Penalty	Collections to First Monday in January 1950	Delinquent on First Monday in January 1950	Total Delinquent Tax and Penalty	REMARKS
	District No. 1	District No. 2	District No. 3	District No. 4	District No. 5	District No. 6															

1						69	1190	26	1216	1	PAID IN FULL MAY 31 1948	6236									1216		
2						36	640	14	654	2	PAID IN FULL MAY 31 1949	1983										872	
3						12	214	04	218	3	PAID IN FULL MAY 31 1949	1984										768	
4						39	694	16	710	4	PAID IN FULL MAY 31 1949	1984										768	
5	SOLD FOR TAXES					15	266	06	272	5												272	
6						41	728	16	744	6	PAID IN FULL MAY 31 1949	8706										744	
7						41	728	16	744	7	PAID IN FULL MAY 31 1949	7772										744	
8	SOLD FOR TAXES					12	214	04	218	8													
9						63	1122	24	1144	9	PAID IN FULL MAY 31 1949	7768										108	
10						81	1440	32	1472	10	PAID IN FULL MAY 31 1949	7985										1472	
11	SOLD FOR TAXES					23	408	08	416	11												416	
12						12	214	04	218	12	PAID IN FULL MAY 31 1949	6223										218	
13	SOLD FOR TAXES					9	160	04	164	13													
14	SOLD FOR TAXES					62	1102	24	1126	14	PAID IN FULL OCT 31 1948	1242										1126	17
15						17	302	06	308	15	PAID IN FULL MAY 31 1949	8709										308	
16						12	214	04	218	16	PAID IN FULL JUL 31 1949	1483										218	03
17										17													
18										18													
19										19													
20										20													

542 542 43-9604 209 9842 1392 3370 10 79

Carlson's Sylvan Park Village of Sylvan North Sylvan Lake Sylvan Shady Shores

Assessment Roll and Tax List of Real Property in the Town of Sylvan

Table with columns: IN WHOSE NAME ASSESSED, TO WHOM TRANSFERRED, DESCRIPTION OF PROPERTY, TRUE AND FULL VALUATIONS, ASSESSED VALUATIONS, FINAL EQUALIZED VALUE.

Cass County, Minnesota, for Taxes for the Year 1948.

Table with columns: VALUATIONS BY SCHOOL DISTRICTS AS EQUALIZED BY DEPARTMENT OF TAXATION, TAX INCLUDING STATE HOMESTEAD, SPECIAL TAXES, TOTAL TAXES, PAID, WHEN PAID, Number of Receipt, March Settlement 1949, June Settlement 1949, November Settlement 1949, Collections to First Monday in January 1950, Delinquent on First Monday in January 1950, Total Delinquent Tax and Penalty, REMARKS.

Cass County, Minnesota, for Taxes for the Year 1948. Village of Sylvan North Sylvan Lake Sylvan Shady Shores

IN WHOSE NAME ASSESSED	TO WHOM TRANSFERRED	DESCRIPTION OF PROPERTY					TRUE AND FULL VALUATIONS				ASSESSED VALUATIONS					FINAL EQUALIZED VALUE	SOLD FOR TAXES	VALUATIONS BY SCHOOL DISTRICTS AS EQUALIZED BY DEPARTMENT OF TAXATION						SPECIAL TAXES	TOTAL TAXES	PAID	WHEN PAID	Number of Receipt	March Settlement 1949	June Settlement 1949	November Settlement 1949	Penalty	Collections to First Monday in January 1950	Penalty	Delinquent on First Monday in January 1950	Total Delinquent Tax and Penalty	REMARKS		
		SUBDIVISION	Sec. of Lot	Town or Block	Rng.	Number of Acres of Land	LAND Exclusive of Structures and Improvements	BUILDINGS and Other Structures	MACHINERY Permanently Attached to Real Estate	TOTAL True and Full Value	RURAL		ALL OTHER		MACHINERY Permanently Attached to Real Estate			TOTAL ASSESSED VALUE	Total Assessed Value as Equalized by the Board of Review	District No.	District Rate	District No.	District Rate															District No.	District Rate
											Homestead Up to \$4,000 20%	Over \$4,000 and Non-Homestead 33 1/3%	Homestead Up to \$4,000 25%	Over \$4,000 and Non-Homestead 40%																									
A. J. Johnson	Dora L. Johnson	2.66 ac. of LOT 2	21	133	30	1	No.	70	90	30	80	216	216	216	1	20	598	12	610	PAID IN FULL	AUG 1 1949	10185	305	305															
Thodore Russett		2 ac. of LOT 2	2			2	70	25	1055	1080	216	216	216	2	1216	4310		4310	PAID IN FULL	APR 13 1949	4643	4310																	
Otto + Eleanor Oitrowski		LOT 2 less 4.66 ac.	9	59	70	90	650	70	148	148	148	148	148	5	148	2954		2954	PAID IN FULL	MAY 31 1949	11359	2954																	
State of Minnesota		LOT 2	23	133	30	1	70							10																									
Miner. Power + Light Co.		11 ac. of LOT 2	24	133	30	11	70	141		111	37	37	37	11	37	738	14	752	PAID IN FULL	MAY 31 1949	8116	752																	
"		LOT 3	32	50			70	324		324	108	108	108	12	108	2154	42	2496	PAID IN FULL	OCT 29 1949	13175	1098	1098																
"		SE 1/4 of NE 1/4	40				70	399		399	133	133	133	13	133	2654	52	2706	PAID IN FULL	OCT 29 1949	13175	1353	1353																
Byrl M. + Norma Wilder		LOT 2 less 11 ac. thru	80			70	620	580	1120	224	224	224	14	224	4470		4470		4470																				
"	Miner. Power + Light Co.	NE 1/4 of SE 1/4	32	65			70	220		220	44	44	44	15	44	878		878		878																			
Miner. Power + Light Co.		NE 1/4 of SE 1/4	40				70	399		399	133	133	133	16	133	2654	52	2706	PAID IN FULL	OCT 29 1949	13175	1353	1353																
"		LOT 4	24	75			70	246		246	82	82	82	17	82	1636	32	1668	PAID IN FULL	MAY 31 1949	8118	834	834																
"		" 5	26	25			70	261		261	87	87	87	18	87	1736	34	1770	PAID IN FULL	MAY 31 1949	8118	885	885																
			301	40			70	2725	2265	4990	632	610	1242	20	632	24782	238	25020		25020																			

Cass County, Minnesota, for Taxes for the Year 1948. Village of Sylvan North Sylvan Shady Shores

Carlyon's Sylvan Park, Village of Sylvan, North Sylvan Sub.

Land & Allen's 2nd Add., Sylvan Beach, Land & Allen's First Add'n. to Sylvan Beach, Sylvan Shady Shores

Table with columns: IN WHOSE NAME ADDRESSED, TO WHOM TRANSFERRED, SUBDIVISION, TRUE AND FULL VALUATIONS (LAND, BUILDINGS, MACHINERY, TOTAL), ASSESSED VALUATIONS (RURAL, ALL OTHER, MACHINERY, TOTAL ASSESSED), VALUATIONS BY SCHOOL DISTRICTS AS EQUALIZED BY DEPARTMENT OF TAXATION, SOLD FOR TAXES, PAID, WHEN PAID, Number of Receipt, March Settlement, June Settlement, November Settlement, Collections to First Monday in January, Delinquent on First Monday in January, Total Delinquent Tax and Penalty, REMARKS.

735 1440 2175 36 665 701

1-16090 256 16346

1400

Assessment Roll and Tax List of Real Property in the Town of Sylvan

Cass County, Minnesota, for Taxes for the Year 1948.

Sylvan Park, Sylvan Beach, Sylvan Beach, Sylvan Beach, Sylvan Shady Shores

Land & Allen's 2nd Add. to Sylvan Beach

Table with columns: IN WHOSE NAME ASSESSED, TO WHOM TRANSFERRED, SUBDIVISION, TRUE AND FULL VALUATIONS, ASSESSED VALUATIONS, VALUATIONS BY SCHOOL DISTRICTS AS EQUALIZED BY DEPARTMENT OF TAXATION, TAX INCLUDING STATE HOMESTEAD, STATE TAX ON NON-HOMESTEAD, SPECIAL TAXES, TOTAL TAXES, PAID, WHEN PAID, Number of Receipt, Month Settlement, June Settlement, Penalty, November Settlement, Penalty, Collections to First Monday in January 1950, Penalty, Delinquent on First Monday in January 1950, Total Delinquent Tax and Penalty, REMARKS.

