

1964 ASSESSMENT - 1965 TAX LIST

Sylvan

Assessment Roll For the Year 1964 and Tax List of Real Property in the Town of Sylvan

Where "Yes" is Indicated in Homestead Column, Identify Description on Which House is Located by Letter "H" under the Word "Yes" - Indicate Type of Property: R-Residential, C-Commercial, I-Industrial, U-Utility, F-Farm, L-Lakeshore, T-Timber, M-Mineral

Cass County, Minnesota, for Taxes Payable in the Year 1965.

Table with columns: IN WHOSE NAME ASSESSED, DESCRIPTION OF PROPERTY, TRUE AND FULL VALUATIONS, ASSESSED VALUATIONS, VALUATIONS BY SCHOOL DISTRICTS AS EQUALIZED BY DEPARTMENT OF TAXATION, TAX INCLUDING STATE HOMESTEAD, SPECIAL TAXES, PAID, WHEN PAID, Number of Receipt, March Settlement, June Settlement, November Settlement, Collections to First Monday in January, Delinquent on First Monday in January, Total Delinquent Tax and Penalty, REMARKS.

Village of Sylvan, Cass County, Minnesota, for Taxes Payable in the Year 1965.

Assessment Roll For the Year 1964 and Tax List of Real Property in the Town of Sylvan

Cass County, Minnesota, for Taxes Payable in the Year 1965.

*Where "Yes" is Indicated in Homestead Column, Identify Description on Which House is Located by Letter "H" under the Word "Yes." - **Indicate Type of Property: R-Residential, C-Commercial, I-Industrial, U-Utility, F-Farm, L-Lakeshore, T-Timber, M-Mineral

Table with columns: IN WHOSE NAME ASSESSED, DESCRIPTION OF PROPERTY, TRUE AND FULL VALUATIONS, ASSESSED VALUATIONS, VALUATIONS BY SCHOOL DISTRICTS AS EQUALIZED BY DEPARTMENT OF TAXATION, TAXES, PAID, WHEN PAID, Number of Receipt, March Settlement 1965, June Settlement 1965, November Settlement 1965, Collections to First Monday in January 1966, Delinquent on First Monday in January 1966, Total Delinquent Tax and Penalty, REMARKS.

Village of Sylvan, Lake in Beach, Sylvan Park, Sylvan Beach, Land & Altan's 1st

Assessment Roll for the Year 1964 and Tax List of Real Property in the Town of Sylvan

Cass County, Minnesota, for Taxes Payable in the Year 1965.

Where "Yes" is Indicated in Homestead Column, Identify Description on Which House is Located by Letter "H" under the Word "Yes." - Indicate Type of Property: R-Residential, C-Commercial, I-Industrial, U-Utility, F-Farm, L-Lakeshore, T-Timber, M-Mineral

Table with columns: IN WHOSE NAME ASSESSED, DESCRIPTION OF PROPERTY, TRUE AND FULL VALUATIONS, ASSESSED VALUATIONS, and FINAL EQUALIZED VALUE. Includes entries for John & Myrtle R. Bratrud, Harold E. & Karen M. Davidson, George E. & Barbara B. McPheters, Edith O. Lindquist, and Laura Peterson.

Table with columns: VALUATIONS BY SCHOOL DISTRICTS AS EQUALIZED BY DEPARTMENT OF TAXATION, TAX INCLUDING STATE HOMESTEAD, SPECIAL TAXES, TOTAL TAXES, PAID, WHEN PAID, and REMARKS. Includes tax rates for various districts and payment schedules.

Vertical text on the right edge of the page: Village of Sylvan, Cass County, Minnesota, 1965.

Assessment Roll For the Year 1964 and Tax List of Real Property in the Town of Sylva

Where "Yes" is Indicated in Homestead Column, Identify Description on Which House is Located by Letter "H" under the Word "Yes." - Indicate Type of Property: R-Residential, C-Commercial, I-Industrial, U-Utility, F-Farm, L-Lakeshore, T-Timber, M-Mineral

Cass County, Minnesota, for Taxes Payable in the Year 1965.

Table with columns: IN WHOSE NAME ASSESSED, DESCRIPTION OF PROPERTY, TRUE AND FULL VALUATIONS, ASSESSED VALUATIONS, VALUATIONS BY SCHOOL DISTRICTS AS EQUALIZED BY DEPARTMENT OF TAXATION, TAXES, PAID, WHEN PAID, Number of Receipt, March Settlement, June Settlement, November Settlement, Collections to First Monday in January, Delinquent on First Monday in January, Total Delinquent Tax and Penalty, REMARKS.

133-29

Crosser & Laura Peterson

Edith Lindquist

Barney & Quinn Osteros

Barney & Quinn Osteros

C. R. & Jean E. Fridmark

NAVILLUS LAND CO.

Vertical text on the right edge of the page, including 'Village of Sylva' and 'Cass County, Minnesota'.

Assessment Roll for the Year 1964 and Tax List of Real Property in the Town of Sylvan

Cass County, Minnesota, for Taxes Payable in the Year 1965.

Where "Yes" is Indicated in Homestead Column, Identify Description on Which House is Located by Letter "H" under the Word "Yes" - Indicate Type of Property: R-Residential, C-Commercial, I-Industrial, U-Utility, F-Farm, L-Lakeshore, T-Timber, M-Mineral

Table with columns: IN WHOSE NAME ASSESSED, DESCRIPTION OF PROPERTY, TRUE AND FULL VALUATIONS, ASSESSED VALUATIONS, VALUATIONS BY SCHOOL DISTRICTS AS EQUALIZED BY DEPARTMENT OF TAXATION, SOLD FOR TAXES, SPECIAL TAXES, PAID, WHEN PAID, Number of Receipt, March Settlement 1965, June Settlement 1965, November Settlement 1965, Collections to First Monday in January 1966, Delinquent on First Monday in January 1966, Total Delinquent Tax and Penalty, REMARKS.

Vertical text on the right edge: Village of Sylvan, 1st, 2nd, 3rd, 4th, 5th, 6th, 7th, 8th, 9th, 10th, 11th, 12th, 13th, 14th, 15th, 16th, 17th, 18th, 19th, 20th.

Assessment Roll For the Year 1964 and Tax List of Real Property in the Town of Sylvan

Where "Yes" is Indicated in Homestead Column, Identify Description on Which House is Located by Letter "H" under the Word "Yes." --Indicate Type of Property: R-Residential, C-Commercial, I-Industrial, U-Utility, F-Farm, L-Lakeshore, T-Timber, M-Mineral

Cass County, Minnesota, for Taxes Payable in the Year 1965.

Table with columns: IN WHOSE NAME ASSESSED, DESCRIPTION OF PROPERTY, TRUE AND FULL VALUATIONS, ASSESSED VALUATIONS, VALUATIONS BY SCHOOL DISTRICTS AS EQUALIZED BY DEPARTMENT OF TAXATION, SOLD FOR TAXES, SPECIAL TAXES, TOTAL TAXES, PAID, WHEN PAID, Number of Receipt, March Settlement 1965, June Settlement 1965, November Settlement 1965, Collections to First Monday in January 1966, Delinquent on First Monday in January 1966, Total Delinquent Tax and Penalty, REMARKS.

(Continued)

Vertical text on the right edge: Village of Sylvan, North Sylvan Lake, Section 208, Sylvan Park, Van Beach, and Allen's 1st.

Assessment Roll For the Year 1964 and Tax List of Real Property in the Town of Sylvan

Where "Yes" is Indicated in Homestead Column, Identify Description on Which House is Located by Letter "H" under the Word "Yes." - Indicate Type of Property: R-Residential, C-Commercial, I-Industrial, U-Utility, F-Farm, L-Lakeshore, T-Timber, M-Mineral

Cass County, Minnesota, for Taxes Payable in the Year 1965.

Table with columns: IN WHOSE NAME ASSESSED, DESCRIPTION OF PROPERTY, TRUE AND FULL VALUATIONS, ASSESSED VALUATIONS, VALUATIONS BY SCHOOL DISTRICTS AS EQUALIZED BY DEPARTMENT OF TAXATION, TAXES, PAID, WHEN PAID, and REMARKS. Includes handwritten entries for David M & Joyce A. Rideout, Ralph & Selina J. Pofahl, and Arthur E & Nancy R. Holbrook.

Village of Sylvan Lake in Beach, Sylvan Park, Sylvan Beach, and Sylvan Beach

Assessment Roll For the Year 1964 and Tax List of Real Property in the Town of Sylvan

Where "Yes" is Indicated in Homestead Column, Identify Description on Which House is Located by Letter "H" under the Word "Yes." - **Indicate Type of Property: R-Residential, C-Commercial, I-Industrial, U-Utility, F-Farm, L-Lakeshore, T-Timber, M-Mineral

Cass County, Minnesota, for Taxes Payable in the Year 1965.

Table with columns: IN WHOSE NAME ASSESSED, DESCRIPTION OF PROPERTY, TRUE AND FULL VALUATIONS, ASSESSED VALUATIONS, VALUATIONS BY SCHOOL DISTRICTS AS EQUALIZED BY DEPARTMENT OF TAXATION, SOLD FOR TAXES, PAID, WHEN PAID, Number of Receipt, March Settlement 1965, June Settlement 1965, November Settlement 1965, Collections to First Monday in January 1966, Delinquent on First Monday in January 1966, Total Delinquent Tax and Penalty, REMARKS.

Vertical text on the right margin: 133-30, Sylvan Lake, Sylvan Park, Sylvan Beach, Sylvan Beach, Sylvan Beach, Sylvan Beach

Assessment Roll For the Year 1964 and Tax List of Real Property in the Town of Sylvan

Where "Yes" is Indicated in Homestead Column, Identify Description on Which House is Located by Letter "H" under the Word "Yes." - Indicate Type of Property: R-Residential, C-Commercial, I-Industrial, U-Utility, F-Farm, L-Lakeshore, T-Timber, M-Mineral

Cass County, Minnesota, for Taxes Payable in the Year 1965.

Table with columns: IN WHOSE NAME ASSESSED, DESCRIPTION OF PROPERTY, TRUE AND FULL VALUATIONS, ASSESSED VALUATIONS, VALUATIONS BY SCHOOL DISTRICTS AS EQUALIZED BY DEPARTMENT OF TAXATION, TAXES, PAID, WHEN PAID, and REMARKS. Includes handwritten entries for names like 'Gerald L. & Ruth St. Marie' and 'Minnesota Power & Light Co'.

133-29

Vertical text on the right edge: Village of Syl 133-30, Sylvan Lake on Beach, Sylvan Park, Sylvan Beach, and 1st & Alton's 1st Sylvan Beach.

Assessment Roll For the Year 1964 and Tax List of Real Property in the Town of Sylvan, of Sylvan, Minnesota

Where "Yes" is Indicated in Homestead Column, Identify Description on Which House is Located by Letter "H" under the Word "Yes." - Indicate Type of Property: R-Residential, C-Commercial, I-Industrial, U-Utility, F-Farm, L-Lakeshore, T-Timber, M-Miner

Cass County, Minnesota, for Taxes Payable in the Year 1965.

Main assessment table with columns for Description of Property, True and Full Valuations, Assessed Valuations, Valuations by School Districts, and Tax/Paid information.

Vertical text on the right edge: Village of Sylvan Lake in Beach, Sylvan Park, Sylvan Beach, Sylvan's 15th St, Sylvan Beach

Assessment Roll For the Year 1964 and Tax List of Real Property in the Town of Sylvan

Form SCD-100 (REV. 5-15-63) MINNESOTA
Where "Yes" is Indicated in Homestead Column, Identify Description on Which House is Located by Letter "H" under the Word "Yes." - *Indicate Type of Property: R-Residential, C-Commercial, I-Industrial, U-Utility, F-Farm, L-Lakeshore, T-Timber, M-Mineral

Table with columns: IN WHOSE NAME ASSESSED, DESCRIPTION OF PROPERTY, TRUE AND FULL VALUATIONS, ASSESSED VALUATIONS, and FINAL EQUALIZED VALUE. Includes handwritten entries for George R. & Sylvia K. Kearney, Brewer & Laura Peterson, Charles R. & Mabel M. Hoodhouse, and Minnesota Power & Light Co.

Cass County, Minnesota, for Taxes Payable in the Year 1965.

Table with columns: VALUATION BY SCHOOL DISTRICTS AS EQUALIZED BY DEPARTMENT OF TAXATION, Tax including State Homestead, State Tax on Non-Homestead, SPECIAL TAXES, TOTAL TAXES, PAID, WHEN PAID, Number of Receipt, March Settlement 1965, June Settlement 1965, November Settlement 1965, Collections to First Monday in January 1966, Delinquent on First Monday in January 1966, Total Delinquent Tax and Penalty, REMARKS. Includes handwritten notes on tax payments and settlements.

Vertical text on the right edge of the page: Village of Syl 133-30, Sylvan Lake in Beach, Sylvan Park, Sylvan Leach, Sylvan's 1st, 2nd, 3rd, 4th, 5th, 6th, 7th, 8th, 9th, 10th, 11th, 12th, 13th, 14th, 15th, 16th, 17th, 18th, 19th, 20th.

Assessment Roll For the Year 1964 and Tax List of Real Property in the Town of Sylvan

Where "Yes" is Indicated in Homestead Column, Identify Description on Which House is Located by Letter "H" under the Word "Yes." - Indicate Type of Property: R-Residential, C-Commercial, I-Industrial, U-Utility, F-Farm, L-Lakeshore, T-Timber, M-Mineral

Cass County, Minnesota, for Taxes Payable in the Year 1965.

Table with columns: IN WHOSE NAME ASSESSED, DESCRIPTION OF PROPERTY, TRUE AND FULL VALUATIONS, ASSESSED VALUATIONS, VALUATIONS BY SCHOOL DISTRICTS AS EQUALIZED BY DEPARTMENT OF TAXATION, TAXES, PAID, WHEN PAID, Number of Receipt, March Settlement 1965, June Settlement 1965, Penalty, November Settlement 1965, Penalty, Collections to First Monday in January 1966, Penalty, Delinquent on First Monday in January 1966, Total Delinquent Tax and Penalty, REMARKS.

(Continued) 324 01

3570 2559 6149 139 1212 606 1957

139 606 745 1512 1818 1957 20914 37052 57966 16925 59658

35818 18894

4946

133-30 Sylvan Lake at Beach Sylvan Park Sylvan Beach

Assessment Roll For the Year 1964 and Tax List of Real Property in the Town of Sylvan

Where "Yes" is Indicated in Homestead Column, Identify Description on Which House is Located by Letter "H" under the Word "Yes." - Indicate Type of Property: R-Residential, C-Commercial, I-Industrial, U-Utility, F-Farm, L-Lakeshore, T-Timber, M-Mineral

Cass County, Minnesota, for Taxes Payable in the Year 1965.

Table with columns: IN WHOSE NAME ASSESSED, DESCRIPTION OF PROPERTY, TRUE AND FULL VALUATIONS, ASSESSED VALUATIONS, VALUATIONS BY SCHOOL DISTRICTS AS EQUALIZED BY DEPARTMENT OF TAXATION, TAX INCLUDING STATE HOMESTEAD, SPECIAL TAXES, TOTAL TAXES, PAID, WHEN PAID, Number of Receipt, March Settlement, June Settlement, November Settlement, Collections to First Monday in January 1966, Delinquent on First Monday in January 1966, Total Delinquent Tax and Penalty, REMARKS.

Assessment Roll For the Year 1964 and Tax List of Real Property in the Town of Sylvan

Where "Yes" is Indicated in Homestead Column, Identify Description on Which House is Located by Letter "H" under the Word "Yes." - *Indicate Type of Property: R-Residential, C-Commercial, I-Industrial, U-Utility, F-Farm, L-Lakeshore, T-Timber, M-Mineral

Cass County, Minnesota, for Taxes Payable in the Year 1965.

Table with columns: IN WHOSE NAME ASSESSED, DESCRIPTION OF PROPERTY, TRUE AND FULL VALUATIONS, ASSESSED VALUATIONS, VALUATIONS BY SCHOOL DISTRICTS AS EQUALIZED BY DEPARTMENT OF TAXATION, TAXES, PAID, WHEN PAID, Number of Receipt, March Settlement 1965, June Settlement 1965, November Settlement 1965, Collections to First Monday in January 1966, Delinquent on First Monday in January 1966, Total Delinquent Tax and Penalty, REMARKS.

Vertical text on the right edge: 133-30, Sylvan Lake an Beach, Sylvan Park, Sylvan's 1st, 2nd, 3rd, 4th, 5th, 6th, 7th, 8th, 9th, 10th, 11th, 12th, 13th, 14th, 15th, 16th, 17th, 18th, 19th, 20th.

Assessment Roll For the Year 1964 and Tax List of Real Property in the Town of Sylvan

Where "Yes" is Indicated in Homestead Column, Identify Description on Which House is Located by Letter "H" under the Word "Yes." - **Indicate Type of Property: R-Residential, C-Commercial, I-Industrial, U-Utility, F-Farm, L-Lakeshore, T-Timber, M-Mineral

Cass County, Minnesota, for Taxes Payable in the Year 1965.

Table with columns: IN WHOSE NAME ASSESSED, DESCRIPTION OF PROPERTY, TRUE AND FULL VALUATIONS, ASSESSED VALUATIONS, VALUATIONS BY SCHOOL DISTRICTS AS EQUALIZED BY DEPARTMENT OF TAXATION, TAXES, PAID, WHEN PAID, Number of Receipt, March Settlement 1965, June Settlement 1965, November Settlement 1965, Penalties, Collections to First Monday in January 1966, Delinquent on First Monday in January 1966, Total Delinquent Tax and Penalty, REMARKS.

NAVILLUS LAND CO.

NORTHWEST PAPER CO.

NAVILLUS LAND CO.

NAVILLUS LAND CO.

of Sylvan, Minn. ...

Assessment Roll For the Year 1964 and Tax List of Real Property in the Town of Sylvan

Where "Yes" is Indicated in Homestead Column, Identify Description on Which House is Located by Letter "H" under the Word "Yes." - Indicate Type of Property: R-Residential, C-Commercial, I-Industrial, U-Utility, F-Farm, L-Lakeshore, T-Timber, M-Mineral

Cass County, Minnesota, for Taxes Payable in the Year 1965.

Table with columns: IN WHOSE NAME ASSESSED, DESCRIPTION OF PROPERTY, TRUE AND FULL VALUATIONS, ASSESSED VALUATIONS, VALUATIONS BY SCHOOL DISTRICTS AS EQUALIZED BY DEPARTMENT OF TAXATION, TAX INCLUDING STATE HOMESTEAD, SPECIAL TAXES, TOTAL TAXES, PAID, WHEN PAID, Number of Receipt, March Settlement 1965, June Settlement 1965, November Settlement 1965, Collections in First Monday in January 1966, Delinquent on First Monday in January 1966, Total Delinquent Tax and Penalty, REMARKS.

(Continued)

504.45

4010 344 4356 4.4 762 1176

392 22: 414 25940 532 2330 722 7706 736 34352 33446

Vertical text on the right edge of the page, including 'Sylvan Park' and 'Sylvan Beach'.

Assessment Roll For the Year 1964 and Tax List of Real Property in the Town of Sylvan

Where "Yes" is Indicated in Homestead Column, Identify Description on Which House is Located by Letter "H" under the Word "Yes." - Indicate Type of Property: R-Residential, C-Commercial, I-Industrial, U-Utility, F-Farm, L-Lakeshore, T-Timber, M-Mineral

Cass County, Minnesota, for Taxes Payable in the Year 1965.

Table with columns: IN WHOSE NAME ASSESSED, DESCRIPTION OF PROPERTY, TRUE AND FULL VALUATIONS, ASSESSED VALUATIONS, VALUATIONS BY SCHOOL DISTRICTS AS EQUALIZED BY DEPARTMENT OF TAXATION, Tax including State Homestead, SPECIAL TAXES, TOTAL TAXES, PAID, WHEN PAID, Number of Receipt, March Settlement 1965, June Settlement 1965, November Settlement 1965, Collections to First Monday in January 1966, Delinquent on First Monday in January 1966, Total Delinquent Tax and Penalty, REMARKS.

Assessment Roll For the Year 1964 and Tax List of Real Property in the Town of Sylvan

Where "Yes" is Indicated in Homestead Column, Identify Description on Which House is Located by Letter "H" under the Word "Yes." - Indicate Type of Property: R-Residential, C-Commercial, I-Industrial, U-Utility, F-Farm, L-Lakeshore, T-Timber, M-Mineral

Cass County, Minnesota, for Taxes Payable in the Year 1965.

Table with columns: IN WHOSE NAME ASSESSED, DESCRIPTION OF PROPERTY, TRUE AND FULL VALUATIONS, ASSESSED VALUATIONS, VALUATIONS BY SCHOOL DISTRICTS AS EQUALIZED BY DEPARTMENT OF TAXATION, TAXES, PAID, WHEN PAID, Number of Receipt, March Settlement 1965, June Settlement 1965, November Settlement 1965, Collections to First Monday in January 1966, Delinquent on First Monday in January 1966, Total Delinquent Tax and Penalty, REMARKS.

Vertical text on the right edge of the page, including 'Sylvan Lake and Beach' and 'Sylvan Park'.

Assessment Roll For the Year 1964 and Tax List of Real Property in the Town of Sylvan

Where "Yes" is Indicated in Homestead Column, Identify Description on Which House is Located by Letter "H" under the Word "Yes." - Indicate Type of Property: R-Residential, C-Commercial, I-Industrial, U-Utility, F-Farm, L-Lakeshore, T-Timber, M-Mineral

Cass County, Minnesota, for Taxes Payable in the Year 1965.

Table with columns: IN WHOSE NAME ASSESSED, DESCRIPTION OF PROPERTY, TRUE AND FULL VALUATIONS, ASSESSED VALUATIONS, VALUATIONS BY SCHOOL DISTRICTS AS EQUALIZED BY DEPARTMENT OF TAXATION, TAXES, PAID, WHEN PAID, Number of Receipt, March Settlement 1965, June Settlement 1965, November Settlement 1965, Collections to First Monday in January 1966, Delinquent on First Monday in January 1966, Total Delinquent Tax and Penalty, REMARKS.

State of Minnesota

Vertical text on the right edge of the page, including 'Sylvan Park' and 'Beach'.

Assessment Roll For the Year 1964 and Tax List of Real Property in the Town of Sylvan

Where "Yes" is Indicated in Homestead Column, Identify Description on Which House is Located by Letter "H" under the Word "Yes" - Indicate Type of Property: R-Residential, C-Commercial, I-Industrial, U-Utility, F-Farm, L-Lakeshore, T-Timber, M-Mineral

Cass County, Minnesota, for Taxes Payable in the Year 1965.

Table with columns: IN WHOSE NAME ASSESSED, DESCRIPTION OF PROPERTY, TRUE AND FULL VALUATIONS, ASSESSED VALUATIONS, VALUATIONS BY SCHOOL DISTRICTS AS EQUALIZED BY DEPARTMENT OF TAXATION, TAX INCLUDING STATE HOMESTEAD, SPECIAL TAXES, TOTAL TAXES, PAID, WHEN PAID, Number of Receipt, March Settlement 1965, June Settlement 1965, November Settlement 1965, Collections to First Monday in January 1966, Delinquent on First Monday in January 1966, Total Delinquent Tax and Penalty, REMARKS.

(Continued)

1584 3900 5060 347 110 1133 1590

1183 2 347 347 31800 1397 1158 46930 5220 37371 3393 946

Vertical text on the right edge of the page, including 'Sylvan Beach' and 'Cass County'.

Assessment Roll For the Year 1964 and Tax List of Real Property in the Town of Sylvan

Where "Yes" is Indicated in Homestead Column, Identify Description on Which House is Located by Letter "H" under the Word "Yes." - Indicate Type of Property: R-Residential, C-Commercial, I-Industrial, U-Utility, F-Farm, L-Lakeshore, T-Timber, M-Mineral

Cass County, Minnesota, for Taxes Payable in the Year 1965.

Table with columns: IN WHOSE NAME ASSESSED, DESCRIPTION OF PROPERTY, TRUE AND FULL VALUATIONS, ASSESSED VALUATIONS, VALUATIONS BY SCHOOL DISTRICTS AS EQUALIZED BY DEPARTMENT OF TAXATION, TAXES, PAID, WHEN PAID, Number of Receipt, March Settlement, June Settlement, November Settlement, Collections to First Monday in January 1966, Delinquent on First Monday in January 1966, Total Delinquent Tax and Penalty, REMARKS.

(Continued) 11 83

855 432:432 24002 14492 474:1329 836 38494 39330

32595 6715

Vertical text on the right edge of the page, including 'Sylvan Lake in Beach' and 'Sylvan Park'.

Assessment Roll For the Year 1964 and Tax List of Real Property in the Town of Sylvan

Where "Yes" is Indicated in Homestead Column, Identify Description on Which House is Located by Letter "H" under the Word "Yes." - *Indicate Type of Property: R-Residential, C-Commercial, I-Industrial, U-Utility, F-Farm, L-Lakeshore, T-Timber, M-Mineral

Cass County, Minnesota, for Taxes Payable in the Year 1965.

Table with columns: IN WHOSE NAME ASSESSED, DESCRIPTION OF PROPERTY, TRUE AND FULL VALUATIONS, ASSESSED VALUATIONS, VALUATIONS BY SCHOOL DISTRICTS AS EQUALIZED BY DEPARTMENT OF TAXATION, TAXES, PAID, WHEN PAID, Number of Receipts, March Settlement, June Settlement, November Settlement, Collections to First Monday in January, Delinquent on First Monday in January, Total Delinquent Tax and Penalty, REMARKS.

Handwritten notes on the left margin: 'Ba', 'Q', 'W', 'A', 'O'.

Handwritten notes: 'S', 'W', 'L', 'B', 'William', 'H', 'Ham', 'Francis', 'E', 'Mary', 'E', 'Pickerson'.

Handwritten notes: 'M.S. & Anne Rasmussen', 'John E. & Virginia L. Eastman', 'Stok & Mann', 'Jordan Rasmussen'.

Vertical text on the right edge: 'Sylvan Lake in Beach Sylvan Park', 'Sylvan Beach', 'Land in Sylvan Beach'.

Assessment Roll For the Year 1964 and Tax List of Real Property in the Town of Sylvan

Cass County, Minnesota, for Taxes Payable in the Year 1965.

Table with columns: IN WHOSE NAME ASSESSED, DESCRIPTION OF PROPERTY, TRUE AND FULL VALUATIONS (RURAL, ALL OTHER, MACHINERY, etc.), VALUATIONS BY SCHOOL DISTRICTS AS EQUALIZED BY DEPARTMENT OF TAXATION, TAXES (SPECIAL, TOTAL, PAID), and REMARKS. Includes handwritten entries for names like James A. Luatic and Fred & Marie Silbertson.

133-30

26

20

20

0

0

0

0

0

0

0

0

0

0

0

0

0

0

0

0

0

Sylvan Shores North Sylvan Lake in Beach Sylvan Park Sylvan Beach Sylvan 1st

Assessment Roll For the Year 1964 and Tax List of Real Property in the Town of Sylvan, Cass County, Minnesota

Where "Yes" is Indicated in Homestead Column, Identify Description on Which House is Located by Letter "H" under the Word "Yes." - Indicate Type of Property: R-Residential, C-Commercial, I-Industrial, U-Utility, F-Farm, L-Lakeshore, T-Timber, M-Mineral

Cass County, Minnesota, for Taxes Payable in the Year 1965.

133-30

Ra

Q

W

Q

Q

Q

Q

Q

Q

Q

Q

Q

Q

Q

Q

Q

Q

Q

Main table with columns: IN WHOSE NAME ASSESSED, DESCRIPTION OF PROPERTY, TRUE AND FULL VALUATIONS (RURAL, ALL OTHER, MACHINERY, etc.), VALUATIONS BY SCHOOL DISTRICTS AS EQUALIZED BY DEPARTMENT OF TAXATION, SPECIAL TAXES, TOTAL TAXES, PAID, WHEN PAID, etc.

Vertical text on the right edge of the page: Sylvan, Shores, North, Sylvan, Lake in Beach, Sylvan Park, Sylvan Beach, and Sylvan Beach.

Assessment Roll For the Year 1964 and Tax List of Real Property in the

Town of Sylvan

Where "Yes" is Indicated in Homestead Column, Identify Description on Which House is Located by Letter "H" under the Word "Yes." - **Indicate Type of Property: R-Residential, C-Commercial, I-Industrial, U-Utility, F-Farm, L-Lakeshore, T-Timber, M-Mineral

Cass County, Minnesota, for Taxes Payable in the Year 1965.

133-30

26

Q W

4

9

S

5

Q

5

Q

1

2

3

4

5

6

7

8

9

10

11

12

DESCRIPTION OF PROPERTY

TRUE AND FULL VALUATIONS

ASSESSED VALUATIONS

FINAL EQUALIZED VALUE

VALUATIONS BY SCHOOL DISTRICTS AS EQUALIZED BY DEPARTMENT OF TAXATION

Main table with columns: IN WHOSE NAME ASSESSED, SUBDIVISION, Acres, No. School District, Indicate Homestead, Agricultural, Industrial, Land Exclusive of Structures and Other Improvements, BUILDINGS and Other Structures, MACHINERY Permanently Attached to Real Estate, TOTAL True and Full Value, RURAL (Homestead, Over \$4,000 and Non-Homestead), ALL OTHER (Timber Land Class 3e 20%, Homestead Up to \$4,000, Over \$4,000 and Non-Homestead, MACHINERY Permanently Attached to Real Estate, Seasonal and Recreational Cabins, TOTAL ASSESSED VALUE, Total Assessed Value as Equalized by the Board of Review), SOLD FOR TAXES, District No., District Rate, State Tax on Non-Homestead, SPECIAL TAXES, TOTAL TAXES, PAID, WHEN PAID, Number of Receipt, March Settlement 1965, June Settlement 1965, November Settlement 1965, Collections to First Monday in January 1966, Delinquent on First Monday in January 1966, Total Delinquent Tax and Penalty, REMARKS.

(Continued)

221 67

1506 1800 3306 272 330 1102

886 216 1132 6604 24870 1028 32502

169.37 10345

5220

Sylvan, Minn. 52360
Shores
North
Sylvan
Lake in Beach
Sylvan Park
Sylvan Beach
High & Allen's 1st

Assessment Roll For the Year 1964 and Tax List of Real Property in the Town of Sylvan

Where "Yes" is Indicated in Homestead Column, Identify Description on Which House is Located by Letter "H" under the Word "Yes." - **Indicate Type of Property: R-Residential, C-Commercial, I-Industrial, U-Utility, F-Farm, L-Lakeshore, T-Timber, M-Mineral

Cass County, Minnesota, for Taxes Payable in the Year 1965.

133-30

Ha
Q
W
4
0

Lo
A

Jo
L
7

20

20

Table with columns: IN WHOSE NAME ASSESSED, DESCRIPTION OF PROPERTY, TRUE AND FULL VALUATIONS, ASSESSED VALUATIONS, VALUATIONS BY SCHOOL DISTRICTS AS EQUALIZED BY DEPARTMENT OF TAXATION, TAX INCLUDING STATE HOMESTEAD, SPECIAL TAXES, TOTAL TAXES, PAID, WHEN PAID, Number of Receipt, March Settlement 1965, June Settlement 1965, November Settlement 1965, Collections to First Monday in January 1966, Delinquent on First Monday in January 1966, Total Delinquent Tax and Penalty, REMARKS.

Sylvan
Shores North
Sylvan Lake in Beach
Sylvan Park
Sylvan Beach
Sylvan's 1st
Sylvan's 2nd
Sylvan's 3rd
Sylvan's 4th
Sylvan's 5th
Sylvan's 6th
Sylvan's 7th
Sylvan's 8th
Sylvan's 9th
Sylvan's 10th
Sylvan's 11th
Sylvan's 12th

Assessment Roll For the Year 1964 and Tax List of Real Property in the Town of Sylvan

Where "Yes" is Indicated in Homestead Column, Identify Description on Which House is Located by Letter "H" under the Word "Yes." - *Indicate Type of Property: R-Residential, C-Commercial, I-Industrial, U-Utility, F-Farm, L-Lakeshore, T-Timber, M-Mineral

Cass County, Minnesota, for Taxes Payable in the Year 1965.

133-30

Main data table with columns: IN WHOSE NAME ASSESSED, DESCRIPTION OF PROPERTY, TRUE AND FULL VALUATIONS, ASSESSED VALUATIONS, VALUATIONS BY SCHOOL DISTRICTS AS EQUALIZED BY DEPARTMENT OF TAXATION, TAXES, PAID, WHEN PAID, etc.

(Continued)

Vertical text on the right edge of the page: of Sylvan, Shores, Sylvan, Lake An Beach, Sylvan Park, Sylvan Beach, Add'n Sylvan Beach

Assessment Roll For the Year 1964 and Tax List of Real Property in the Town of Sylvan, Cass County, Minnesota, for Taxes Payable in the Year 1965.

Cass County, Minnesota, for Taxes Payable in the Year 1965.

133-30

Where "Yes" is Indicated in Homestead Column, Identify Description on Which House is Located by Letter "H" under the Word "Yes." - **Indicate Type of Property: R-Residential, C-Commercial, I-Industrial, U-Utility, F-Farm, L-Lakeshore, T-Timber, M-Mineral

Table with columns: IN WHOSE NAME ASSESSED, SUBDIVISION, No. School District, TRUE AND FULL VALUATIONS (LAND, BUILDINGS, MACHINERY, TOTAL), ASSESSED VALUATIONS (RURAL, ALL OTHER), VALUATIONS BY SCHOOL DISTRICTS AS EQUALIZED BY DEPARTMENT OF TAXATION (District No., Rate, Mills), Tax Including State Homestead, State Tax on Non-Homestead, SPECIAL TAXES, TOTAL TAXES, PAID, WHEN PAID, Number of Receipt, March Settlement 1965, June Settlement 1965, November Settlement 1965, Collections to First Monday in January 1966, Delinquent on First Monday in January 1966, Total Delinquent Tax and Penalty, REMARKS.

Harriet B. Derauf
Richard E. Derauf
Paul O. Berglund
NORTHWEST PAPER CO.
Richard E. Derauf
Conrad St. + Helen Patton
Ralph A. + Cora Agnes Cole

Table with columns: SOLD FOR TAXES, VALUATIONS BY SCHOOL DISTRICTS AS EQUALIZED BY DEPARTMENT OF TAXATION, Tax Including State Homestead, State Tax on Non-Homestead, SPECIAL TAXES, TOTAL TAXES, PAID, WHEN PAID, Number of Receipt, March Settlement 1965, June Settlement 1965, November Settlement 1965, Collections to First Monday in January 1966, Delinquent on First Monday in January 1966, Total Delinquent Tax and Penalty, REMARKS.

Sylvan Shoreline
Sylvan Lake on Beach
Sylvan Park
Sylvan Beach
Sylvan 1st

Assessment Roll For the Year 1964 and Tax List of Real Property in the Town of Sylvan, Cass County, Minnesota, for Taxes Payable in the Year 1965.

*Where "Yes" is Indicated in Homestead Column, Identify Description on Which House is Located by Letter "H" under the Word "Yes." - **Indicate Type of Property: R-Residential, C-Commercial, I-Industrial, U-Utility, F-Farm, L-Lakeshore, T-Timber, M-Mineral

Cass County, Minnesota, for Taxes Payable in the Year 1965.

133-30

Ha

Q

W

9

7

8

4

6

1

12

14

15

2

19

20

Main table with columns: IN WHOSE NAME ASSESSED, DESCRIPTION OF PROPERTY, TRUE AND FULL VALUATIONS, ASSESSED VALUATIONS, VALUATIONS BY SCHOOL DISTRICTS AS EQUALIZED BY DEPARTMENT OF TAXATION, TAXES, PAID, WHEN PAID, etc.

VT11

Sylvan

Shores

North

Sylvan

Lake

in Beach

Sylvan Park

Beach

1st

2nd

3rd

4th

5th

Assessment Roll For the Year 1964 and Tax List of Real Property in the Town of Sylvan

Where "Yes" is Indicated in Homestead Column, Identify Description on Which House is Located by Letter "H" under the Word "Yes." - **Indicate Type of Property: R-Residential, C-Commercial, I-Industrial, U-Utility, F-Farm, L-Lakeshore, T-Timber, M-Mineral

Cass County, Minnesota, for Taxes Payable in the Year 1965.

133-30

Table with columns for property description, valuations, taxes, and payments. Rows include names like Arno + Clara L. Pasaler, O. A. + Erna Berndt, Hillis + Ilossie Mann, Robert + Grace Oliphant, Adolph L. + Joyce M. Berndt, Wesley + Emma Reek, Millford W. Wright, and Daniel J. Phillips.

Assessment Roll For the Year 1964 and Tax List of Real Property in the Town of Sylvan of Cass County, Minnesota

Cass County, Minnesota, for Taxes Payable in the Year 1965.

Table with columns: IN WHOSE NAME ASSESSED, DESCRIPTION OF PROPERTY, TRUE AND FULL VALUATIONS, ASSESSED VALUATIONS, VALUATIONS BY SCHOOL DISTRICTS AS EQUALIZED BY DEPARTMENT OF TAXATION, SOLD FOR TAXES, PAID, WHEN PAID, SPECIAL TAXES, TOTAL TAXES, and REMARKS. Includes handwritten entries for names like Ralph A & Cora Agnes Cole and Gilbert & Myrtle Jessmer.

Assessment Roll For the Year 1964 and Tax List of Real Property in the Town of Sylvan

Where "Yes" is Indicated in Homestead Column, Identify Description on Which House is Located by Letter "H" under the Word "Yes." - **Indicate Type of Property: R-Residential, C-Commercial, I-Industrial, U-Utility, F-Farm, L-Lakeshore, T-Timber, M-Mineral

Table with columns: IN WHOSE NAME ASSESSED, DESCRIPTION OF PROPERTY, TRUE AND FULL VALUATIONS, ASSESSED VALUATIONS, and FINAL EQUALIZED VALUE. Includes entries for North-West Paper Co., Elmer & Mae Gudim, Ralph A. & Cora Agnes Cole, and Edwin J. Hubin.

Cass County, Minnesota, for Taxes Payable in the Year 1965.

Table with columns: VALUATIONS BY SCHOOL DISTRICTS AS EQUALIZED BY DEPARTMENT OF TAXATION, Tax Including State Homestead, SPECIAL TAXES, TOTAL TAXES, PAID, WHEN PAID, and REMARKS. Includes handwritten notes and dates like 'PAID IN FULL MAY 28 1965'.

Assessment Roll For the Year 1964 and Tax List of Real Property in the

Town of Sylvan

Cass County, Minnesota, for Taxes Payable in the Year 1965.

Where "Yes" is Indicated in Homestead Column, Identify Description on Which House is Located by Letter "H" under the Word "Yes." - Indicate Type of Property: R-Residential, C-Commercial, I-Industrial, U-Utility, F-Farm, L-Lakeshore, T-Timber, M-Mineral

Table with columns: IN WHOSE NAME ASSESSED, DESCRIPTION OF PROPERTY, TRUE AND FULL VALUATIONS, ASSESSED VALUATIONS, VALUATIONS BY SCHOOL DISTRICTS AS EQUALIZED BY DEPARTMENT OF TAXATION, TAXES, PAID, WHEN PAID, Number of Receipt, March Settlement 1965, June Settlement 1965, November Settlement 1965, Penalty, Collections to First Monday in January 1966, Delinquent on First Monday in January 1966, Total Delinquent Tax and Penalty, REMARKS.

Assessment Roll For the Year 1964 and Tax List of Real Property in the Town of Sylvan

Where "Yes" is Indicated in Homestead Column, Identify Description on Which House is Located by Letter "H" under the Word "Yes." - *Indicate Type of Property: R-Residential, C-Commercial, I-Industrial, U-Utility, F-Farm, L-Lakeshore, T-Timber, M-Mineral

Cass County, Minnesota, for Taxes Payable in the Year 1965

Table with columns: IN WHOSE NAME ASSESSED, SUBDIVISION, TRUE AND FULL VALUATIONS, ASSESSED VALUATIONS, VALUATIONS BY SCHOOL DISTRICTS AS EQUALIZED BY DEPARTMENT OF TAXATION, TAXES, PAID, WHEN PAID, Number of Receipt, March Settlement 1965, June Settlement 1965, November Settlement 1965, Penalty, Collections to First Monday in January 1966, Delinquent on First Monday in January 1966, Total Delinquent Tax and Penalty, REMARKS.

133-30

N

Liizzie A. Newkirk
Herbert W. & Lois Regelin
Harvey D. Covell & Wilma J. Kupitz

Liizzie A. Newkirk
Richard Anderson

Herbert W. & Lois Regelin
Liizzie Newkirk
Herbert W. & Lois Regelin

446 70

3004 600 3204 382 543

946

21136
5900
27036

27560

133 46 131 02

946

166 abated

Shores North Sylvan Lake in Beach
Carlson's Park Sylvan Beach
Grand & Alton's 1st Add'n Sylvan Beach

Assessment Roll For the Year 1964 and Tax List of Real Property in the Town of Sylvan

"Where "Yes" is Indicated in Homestead Column, Identify Description on Which House is Located by Letter "H" under the Word "Yes." - **Indicate Type of Property: R-Residential, C-Commercial, I-Industrial, U-Utility, F-Farm, L-Lakeshore, T-Timber, M-Mineral

Cass County, Minnesota, for Taxes Payable in the Year 1965.

Table with columns for Description of Property, True and Full Valuations, Assessed Valuations, Final Equalized Value, Valuations by School Districts, Tax Including State Homestead, State Tax on Non-Homestead, Special Taxes, Total Taxes, PAID, WHEN PAID, Number of Receipt, March Settlement 1965, June Settlement 1965, November Settlement 1965, Collections to First Monday in January 1966, Delinquent on First Monday in January 1966, Total Delinquent Tax and Penalty, and REMARKS.

133-30

Sylvan Shoreline Sylvan Lake in Beach Sylvan Park Sylvan Beach

Assessment Roll For the Year 1964 and Tax List of Real Property in the Town of Sylvan

Where "Yes" is Indicated in Homestead Column, Identify Description on Which House is Located by Letter "H" under the Word "Yes." - Indicate Type of Property: R-Residential, C-Commercial, I-Industrial, U-Utility, F-Farm, L-Lakeshore, T-Timber, M-Mineral

Cass County, Minnesota, for Taxes Payable in the Year 1965.

Main data table with columns: IN WHOSE NAME ASSESSED, DESCRIPTION OF PROPERTY, TRUE AND FULL VALUATIONS, VALUATIONS BY SCHOOL DISTRICTS AS EQUALIZED BY DEPARTMENT OF TAXATION, TAXES, PAID, WHEN PAID, Number of Receipt, March Settlement 1965, June Settlement 1965, November Settlement 1965, Collections to First Monday in January 1966, Delinquent on First Monday in January 1966, Total Delinquent Tax and Penalty, REMARKS.

(Continued) 417 84

2958 2370 8321 876 316 1192

876 316 1192 33462 294 33756

77 69 25987

133-30

Vertical text on the right edge of the page, including 'Sylvan' and 'Shores'.

Assessment Roll For the Year 1964 and Tax List of Real Property in the Town of Sylvan

Where "Yes" is Indicated in Homestead Column, Identify Description on Which House is Located by Letter "H" under the Word "Yes." - **Indicate Type of Property: R-Residential, C-Commercial, I-Industrial, U-Utility, F-Farm, L-Lakeshore, T-Timber, M-Mineral

Cass County, Minnesota, for Taxes Payable in the Year 1965

Table with columns: IN WHOSE NAME ASSESSED, DESCRIPTION OF PROPERTY, TRUCK AND FULL VALUATIONS, ASSESSED VALUATIONS, VALUATIONS BY SCHOOL DISTRICTS AS EQUALIZED BY DEPARTMENT OF TAXATION, TAXES, PAID, WHEN PAID, Number of Receipt, March Settlement 1965, June Settlement 1965, November Settlement 1965, Penalty, Collections to First Monday in January 1966, Delinquent on First Monday in January 1966, Total Delinquent Tax and Penalty, REMARKS.

133-30

5

S

1

1

Vertical text on the right edge of the page, including 'Sylvan' and 'Shores'.

Assessment Roll For the Year 1964 and Tax List of Real Property in the Town of Sylvan

Where "Yes" is Indicated in Homestead Column, Identify Description on Which House is Located by Letter "H" under the Word "Yes." - Indicate Type of Property: R-Residential, C-Commercial, I-Industrial, U-Utility, F-Farm, L-Lakeshore, T-Timber, M-Mineral

Cass County, Minnesota, for Taxes Payable in the Year 1965.

Table with columns: IN WHOSE NAME ASSESSED, DESCRIPTION OF PROPERTY, TRUE AND FULL VALUATIONS, ASSESSED VALUATIONS, VALUATIONS BY SCHOOL DISTRICTS AS EQUALIZED BY DEPARTMENT OF TAXATION, TAX INCLUDING STATE HOMESTEAD, SPECIAL TAXES, TOTAL TAXES, PAID, WHEN PAID, Number of Receipt, March Settlement 1965, June Settlement 1965, November Settlement 1965, Collections to First Monday in January 1966, Delinquent on First Monday in January 1966, Total Delinquent Tax and Penalty, REMARKS.

133-30

Map of Sylvan showing Shoreland, Sylvan North, Sylvan Lake in Beach, Sylvan 2nd, Sylvan Park, Sylvan Beach, and Sylvan's 1st.

Assessment Roll For the Year 1964 and Tax List of Real Property in the Town of Sylvan

*Where "Yes" is Indicated in Homestead Column, Identify Description on Which House is Located by Letter "H" under the Word "Yes." - **Indicate Type of Property: R-Residential, C-Commercial, I-Industrial, U-Utility, F-Farm, L-Lakeshore, T-Timber, M-Mineral

Cass County, Minnesota, for Taxes Payable in the Year 1965.

133-30

Table with columns: IN WHOSE NAME ASSESSED, DESCRIPTION OF PROPERTY, TRUE AND FULL VALUATIONS, ASSESSED VALUATIONS, VALUATIONS BY SCHOOL DISTRICTS AS EQUALIZED BY DEPARTMENT OF TAXATION, TAXES, PAID, WHEN PAID, Number of Receipt, March Settlement 1965, June Settlement 1965, November Settlement 1965, Collections to First Monday in January 1966, Delinquent on First Monday in January 1966, Total Delinquent Tax and Penalty, REMARKS.

Vertical text on the right edge: WILLIAM S. ... Sylvan Lake in Beach ... Sylvan Park ... Sylvan Beach ... Add'n Sylvan Beach ...

Assessment Roll For the Year 1964 and Tax List of Real Property in the Town of Sylvan, Cass County, Minnesota

Cass County, Minnesota, for Taxes Payable in the Year 1965.

Table with columns: IN WHOSE NAME ASSESSED, DESCRIPTION OF PROPERTY, TRUE AND FULL VALUATIONS, ASSESSED VALUATIONS, VALUATIONS BY SCHOOL DISTRICTS AS EQUALIZED BY DEPARTMENT OF TAXATION, TAX INCLUDING STATE HOMESTEAD, SPECIAL TAXES, TOTAL TAXES, PAID, WHEN PAID, Number of Receipt, March Settlement 1965, June Settlement 1965, November Settlement 1965, Collections to First Monday in January 1966, Delinquent on First Monday in January 1966, Total Delinquent Tax and Penalty, REMARKS.

133-30

Shores North Sylvan Lake in Leach Park 2nd Sylvan's Sylvan Beach 1st Sylvan Beach

Assessment Roll For the Year 1964 and Tax List of Real Property in the Town of Sylvan

Where "Yes" is Indicated in Homestead Column, Identify Description on Which House is Located by Letter "H" under the Word "Yes." - **Indicate Type of Property: R-Residential, C-Commercial, I-Industrial, U-Utility, F-Farm, L-Lakeshore, T-Timber, M-Mineral

SE 1/4 of SE 1/4 17,133-30

Sylvan 50

Camiso, Rec. #31739 Minnesota, for Taxes Payable in the Year 1965.

Table with columns for Description of Property, Assessed Valuations (Rural, All Other, Machinery, Seasonal and Recreational Cabins, Total Assessed Value), Final Equalized Value, School District, Valuations by School Districts, and Tax Information (SOLD FOR TAXES, District No., Rate, Total Taxes, PAID, WHEN PAID, etc.). Includes handwritten entries for property owners like George F. & Margaret M. Berrelle and Norman W. & Barbara Amelung.

Vertical text on the right edge: 133-30, Sylvan, Shore, North, Sylvan Lake, in Beach, Sylvan Park, Sylvan Beach, and 11 Len's 1st.

Assessment Roll For the Year 1964 and Tax List of Real Property in the Town of Sylvan

*Where "Yes" is Indicated in Homestead Column, Identify Description on Which House is Located by Letter "H" under the Word "Yes." - **Indicate Type of Property: R-Residential, C-Commercial, I-Industrial, U-Utility, F-Farm, L-Lakeshore, T-Timber, M-Mineral

Cass County, Minnesota, for Taxes Payable in the Year 1965.

Table with columns: IN WHOSE NAME ASSESSED, DESCRIPTION OF PROPERTY, TRUE AND FULL VALUATIONS, ASSESSED VALUATIONS, VALUATIONS BY SCHOOL DISTRICTS AS EQUALIZED BY DEPARTMENT OF TAXATION, TAXES, PAID, WHEN PAID, Number of Receipt, March Settlement 1965, June Settlement 1965, Penalty, November Settlement 1965, Penalty, Collections to First Monday in January 1966, Delinquent on First Monday in January 1966, Total Delinquent Tax and Penalty, REMARKS.

133-30

Map of Sylvan showing Shore's North, Sylvan, Lake An Beach, Sylvan Park, Sylvan Beach, and Sylvan's 1st.

Assessment Roll For the Year 1964 and Tax List of Real Property in the Town of Sylvan

Where "Yes" is Indicated in Homestead Column, Identify Description on Which House is Located by Letter "H" under the Word "Yes." - *Indicate Type of Property: R-Residential, C-Commercial, I-Industrial, U-Utility, F-Farm, L-Lakeshore, T-Timber, M-Mineral

Cass County, Minnesota, for Taxes Payable in the Year 1965.

Table with columns: IN WHOSE NAME ASSESSED, DESCRIPTION OF PROPERTY, TRUE AND FULL VALUATIONS, ASSESSED VALUATIONS, VALUATIONS BY SCHOOL DISTRICTS AS EQUALIZED BY DEPARTMENT OF TAXATION, TAXES, SPECIAL TAXES, TOTAL TAXES, PAID, WHEN PAID, Number of Receipt, March Settlement 1965, June Settlement 1965, November Settlement 1965, Collections to First Monday in January 1966, Delinquent on First Monday in January 1966, Total Delinquent Tax and Penalty, REMARKS.

Assessment Roll For the Year 1964 and Tax List of Real Property in the

Where "Yes" is Indicated in Homestead Column, Identify Description on Which House is Located by Letter "H" under the Word "Yes." - Indicate Type of Property: R-Residential, C-Commercial, I-Industrial, U-Utility, F-Farm, L-Lakeshore, T-Timber, M-Mineral

Table with columns: IN WHOSE NAME ASSESSED, DESCRIPTION OF PROPERTY, TRUE AND FULL VALUATIONS, ASSESSED VALUATIONS, and FINAL EQUALIZED VALUE. Includes entries for Lena Cole, Wesley E. Petersons, Minnesota Power & Light Co, and Leon W. & Margaret Servilligen.

(Continued)

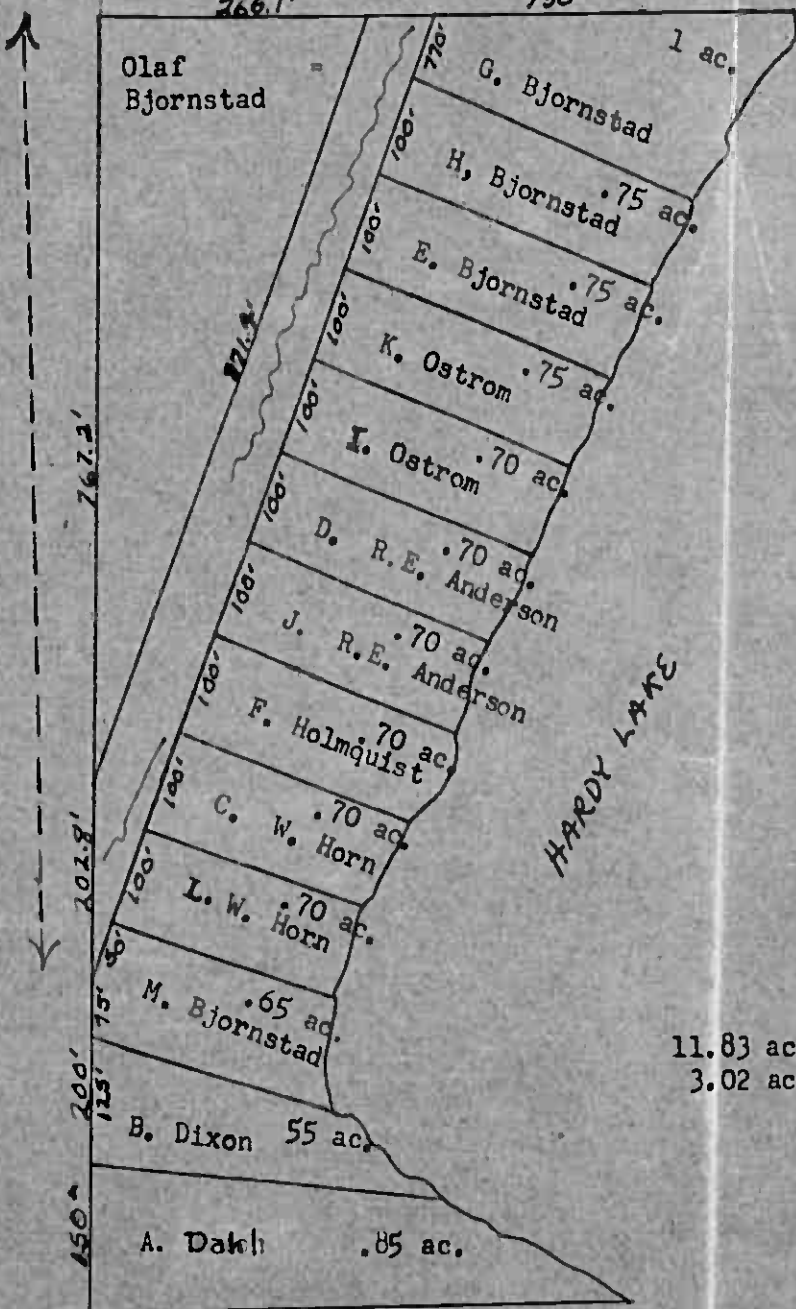
Cass County, Minnesota, for Taxes Payable in the Year 1965.

Table with columns: SOLD FOR TAXES, VALUATIONS BY SCHOOL DISTRICTS AS EQUALIZED BY DEPARTMENT OF TAXATION, Tax including State Homestead, SPECIAL TAXES, TOTAL TAXES, PAID, WHEN PAID, Number of Receipt, March Settlement 1965, June Settlement 1965, November Settlement 1965, Collections to First Monday in January 1966, Delinquent on First Monday in January 1966, Total Delinquent Tax and Penalty, REMARKS. Includes handwritten entries for districts 6, 7, 8, 9, 13, 14, 15, 18, 20.

Vertical text on the right edge of the page: 133-30, of Sylvan, Shores, Sylvan Lake on Beach, Sylvan Park, Sylvan Beach, Add'n Sylvan Beach, Carlsson's, Sylvan Park, Sylvan Beach, Add'n Sylvan Beach, Sylvan Park, Sylvan Beach, Add'n Sylvan Beach, Sylvan Park, Sylvan Beach, Add'n Sylvan Beach.

Scale "200

This map drawn from
Reg. of Deeds record
3-9-53



- A. Dahl
- B. Dixon
- C. W. Horn
- D. R.E. & C. Anderson
- E. Bjornstad
- F. Holmquist
- G. Bjornstad
- H. Bjornstad
- I. H. N. & A. Ostrom
- J. R.E. & C. Anderson
- K. H. N. Ostrom
- L. W. B. Horn
- M. Bjornstad

Bal of Lot 2 - Bjornstad
2.33 acres

11.83 acs.
3.02 acs. road

Assessment Roll For the Year 1964 and Tax List of Real Property in the Town of Sylvan

*Where "Yes" is Indicated in Homestead Column, Identify Description on Which House is Located by Letter "H" under the Word "Yes." - **Indicate Type of Property: R-Residential, C-Commercial, I-Industrial, U-Utility, F-Farm, L-Lakeshore, T-Timber, M-Mineral

Cass County, Minnesota, for Taxes Payable in the Year 1965.

Table with columns: IN WHOSE NAME ASSESSED, DESCRIPTION OF PROPERTY, TRUE AND FULL VALUATIONS, ASSESSED VALUATIONS (RURAL, ALL OTHER, MACHINERY, Seasonal and Recreational Cabins, TOTAL ASSESSED VALUE), VALUATIONS BY SCHOOL DISTRICTS AS EQUALIZED BY DEPARTMENT OF TAXATION, Tax including State Homestead, State Tax on Non-Homestead, SPECIAL TAXES, SPECIAL TAXES, TOTAL TAXES, PAID, WHEN PAID, Number of Receipt, March Settlement 1965, June Settlement 1965, November Settlement 1965, Collections to First Monday in January 1966, Delinquent on First Monday in January 1966, Total Delinquent Tax and Penalty, REMARKS.

Sylvan Shore of Sylvan North Sylvan Lake an Beach Sylvan Park Sylvan Beach Allen's T&E

Assessment Roll For the Year 1964 and Tax List of Real Property in the Town of Sylvan, Cass County, Minnesota, for Taxes Payable in the Year 1965.

*Where "Yes" is Indicated in Homestead Column, Identify Description on Which House is Located by Letter "H" under the Word "Yes." - **Indicate Type of Property: R-Residential, C-Commercial, I-Industrial, U-Utility, F-Farm, L-Lakeshore, T-Timber, M-Mineral

Cass County, Minnesota, for Taxes Payable in the Year 1965.

133-30

Table with columns: IN WHOSE NAME ASSESSED, DESCRIPTION OF PROPERTY, TRUE AND FULL VALUATIONS, ASSESSED VALUATIONS, VALUATIONS BY SCHOOL DISTRICTS AS EQUALIZED BY DEPARTMENT OF TAXATION, Tax Including State Homestead, State Tax on Non-Homestead, SPECIAL TAXES, TOTAL TAXES, PAID, WHEN PAID, Number of Receipt, March Settlement 1965, June Settlement 1965, Penalty, November Settlement 1965, Penalty, Collections to First Monday in January 1966, Penalty, Delinquent on First Monday in January 1966, Total Delinquent Tax and Penalty, REMARKS.

Vertical text on the right edge of the page, including 'Sylvan' and 'Cass County'.

Assessment Roll For the Year 1964 and Tax List of Real Property in the Town of Sylva

Where "Yes" is Indicated in Homestead Column, Identify Description on Which House is Located by Letter "H" under the Word "Yes." - **Indicate Type of Property: R-Residential, C-Commercial, I-Industrial, U-Utility, F-Farm, L-Lakeshore, T-Timber, M-Mineral

Cass County, Minnesota, for Taxes Payable in the Year 1965.

133-30

Table with columns for Property Description, True and Full Valuations, Assessed Valuations, Final Equalized Value, Sold for Taxes, School District Valuations, and Tax/Payment Information. Includes entries for Minnesota Power & Light Co and St. Olaf College.

Vertical text on the right edge of the page, including 'Sylvan' and 'Beach'.

Assessment Roll For the Year 1964 and Tax List of Real Property in the Town of Sylvan

Where "Yes" is Indicated in Homestead Column, Identify Description on Which House is Located by Letter "H" under the Word "Yes." - Indicate Type of Property: R-Residential, C-Commercial, I-Industrial, U-Utility, F-Farm, L-Lakeshore, T-Timber, M-Mineral

Cass County, Minnesota, for Taxes Payable in the Year 1965.

Table with columns: IN WHOSE NAME ASSESSED, DESCRIPTION OF PROPERTY, TRUE AND FULL VALUATIONS, ASSESSED VALUATIONS, VALUATIONS BY SCHOOL DISTRICTS AS EQUALIZED BY DEPARTMENT OF TAXATION, TAXES, PAID, WHEN PAID, etc.

(Continued)

Sylvan Shady Shores, Sylvan Lake, Sylvan Beach, Sylvan Park, Sylvan Beach

Assessment Roll For the Year 1964 and Tax List of Real Property in the Town of Sylvan

Where "Yes" is Indicated in Homestead Column, Identify Description on Which House is Located by Letter "H" under the Word "Yes." - **Indicate Type of Property: R-Residential, C-Commercial, I-Industrial, U-Utility, F-Farm, L-Lakeshore, T-Timber, M-Mineral

Cass County, Minnesota, for Taxes Payable in the Year 1965.

Table with columns for Property Description, Valuations (True and Full, Assessed), Taxes (School Districts, State, Special, Total), and Payment Status. Includes handwritten entries for Charles M. Della D. Luttrell and various tax amounts.

133-30

Sylvan Shady Shores, Sylvan Lake, Sylvan Park, Sylvan Beach, Sylvan Beach, Sylvan Beach

Assessment Roll For the Year 1964 and Tax List of Real Property in the

Town of Sylvan

of Sylvan

Where "Yes" is Indicated in Homestead Column, Identify Description on Which House is Located by Letter "H" under the Word "Yes" - *Indicate Type of Property: R-Residential, C-Commercial, I-Industrial, U-Utility, F-Farm, L-Lakeshore, T-Timber, M-Mineral

Cass County, Minnesota, for Taxes Payable in the Year 1965.

Table with columns: IN WHOSE NAME ASSESSED, DESCRIPTION OF PROPERTY, TRUE AND FULL VALUATIONS, ASSESSED VALUATIONS, VALUATIONS BY SCHOOL DISTRICTS AS EQUALIZED BY DEPARTMENT OF TAXATION, TAXES, PAID, WHEN PAID, Number of Receipt, March Settlement, June Settlement, November Settlement, Collections to First Monday in January 1966, Delinquent on First Monday in January 1966, Total Delinquent Tax and Penalty, REMARKS.

(Continued)

Sylvan Shady Shores, North Sylvan Lake, Land & Allen's 2nd and 3rd, Sylvan Park, Sylvan Beach, Land & Allen's 1st and 2nd, Add'n Sylvan Beach

Assessment Roll For the Year 1964 and Tax List of Real Property in the Town of Sylvan

Where "Yes" is Indicated in Homestead Column, Identify Description on Which House is Located by Letter "H" under the Word "Yes." - Indicate Type of Property: R-Residential, C-Commercial, I-Industrial, U-Utility, F-Farm, L-Lakeshore, T-Timber, M-Mineral

Cass County, Minnesota, for Taxes Payable in the Year 1965.

Table with columns: IN WHOSE NAME ASSESSED, DESCRIPTION OF PROPERTY, TRUE AND FULL VALUATIONS, ASSESSED VALUATIONS, VALUATIONS BY SCHOOL DISTRICTS AS EQUALIZED BY DEPARTMENT OF TAXATION, SOLD FOR TAXES, PAID, WHEN PAID, Number of Receipt, March Settlement 1965, June Settlement 1965, November Settlement 1965, Penalty, Collections to First Monday in January 1966, Delinquent on First Monday in January 1966, Total Delinquent Tax and Penalty, REMARKS.

133-30

Willage of

Sylvan Shady Shores, Sylvan North Lake, Sylvan Land & Allen's 2nd Beach, Sylvan Carlton's Sylvan Park, Sylvan Land & Allen's 3rd Beach, Sylvan Land & Allen's 1st Beach

Assessment Roll For the Year 1964 and Tax List of Real Property in the Town of Sylvan

Cass County, Minnesota, for Taxes Payable in the Year 1965.

Where "Yes" is Indicated in Homestead Column, Identify Description on Which House is Located by Letter "H" under the Word "Yes." - Indicate Type of Property: R-Residential, C-Commercial, I-Industrial, U-Utility, F-Farm, L-Lakeshore, T-Timber, M-Mineral

Table with columns: IN WHOSE NAME ASSESSED, DESCRIPTION OF PROPERTY, TRUE AND FULL VALUATIONS, ASSESSED VALUATIONS, VALUATIONS BY SCHOOL DISTRICTS AS EQUALIZED BY DEPARTMENT OF TAXATION, TAX INCLUDING STATE HOMESTEAD, SPECIAL TAXES, TOTAL TAXES, PAID, WHEN PAID, Number of Receipt, March Settlement 1965, June Settlement 1965, November Settlement 1965, Collections to First Monday in January 1966, Delinquent on First Monday in January 1966, Total Delinquent Tax and Penalty, REMARKS.

Village of Norton Sylvan Lake

Sylvan Shady Shores, Land & Allen's 2nd, Parlyon's, Sylvan Beach, Sylvan Park, Land & Allen's 1st, Land & Allen's 1st, Sylvan Beach

Assessment Roll For the Year 1964 and Tax List of Real Property in the Town of Sylvan

Where "Yes" is Indicated in Homestead Column, Identify Description on Which House is Located by Letter "H" under the Word "Yes." - Indicate Type of Property: R-Residential, C-Commercial, I-Industrial, U-Utility, F-Farm, L-Lakeshore, T-Timber, M-Mineral

Cass County, Minnesota, for Taxes Payable in the Year 1965.

Table with columns: IN WHOSE NAME ASSESSED, DESCRIPTION OF PROPERTY, TRUE AND FULL VALUATIONS, ASSESSED VALUATIONS, VALUATIONS BY SCHOOL DISTRICTS AS EQUALIZED BY DEPARTMENT OF TAXATION, TAX INCLUDING STATE HOMESTEAD, SPECIAL TAXES, PAID, WHEN PAID, Number of Receipt, March Settlement 1965, June Settlement 1965, November Settlement 1965, Collections to First Monday in January 1966, Delinquent on First Monday in January 1966, Total Delinquent Tax and Penalty, REMARKS.

Assessment Roll For the Year 1964 and Tax List of Real Property in the Town of Sylvan of Sylvan

*Where "Yes" is Indicated in Homestead Column, Identify Description on Which House is Located by Letter "H" under the Word "Yes." -- Indicate Type of Property: R-Residential, C-Commercial, I-Industrial, U-Utility, F-Farm, L-Lakeshore, T-Timber, M-Mineral

Cass County, Minnesota, for Taxes Payable in the Year 1965.

Table with columns: IN WHOSE NAME ASSESSED, DESCRIPTION OF PROPERTY, TRUE AND FULL VALUATIONS, ASSESSED VALUATIONS, VALUATIONS BY SCHOOL DISTRICTS AS EQUALIZED BY DEPARTMENT OF TAXATION, TAX INCLUDING STATE, SPECIAL TAXES, TOTAL TAXES, PAID, WHEN PAID, Number of Receipt, March Settlement 1965, June Settlement 1965, November Settlement 1965, Delinquent on First Monday in January 1966, Total Delinquent Tax and Penalty, REMARKS.

Village of Sylvan

Carlson's Sylvan Park

Carlson's Sylvan Park

Sylvan Shady Shores

Land & Allen's 2nd Add'n Sylvan Beach

Land & Allen's 3rd Add'n Sylvan Beach

Land & Allen's 4th Add'n Sylvan Beach

Land & Allen's 5th Add'n Sylvan Beach

Land & Allen's 6th Add'n Sylvan Beach

Assessment Roll For the Year 1964 and Tax List of Real Property in the Town of Sylvan

*Where "Yes" is Indicated in Homestead Column, Identify Description on Which House is Located by Letter "H" under the Word "Yes." - **Indicate Type of Property: R-Residential, C-Commercial, I-Industrial, U-Utility, F-Farm, L-Lakeshore, T-Timber, M-Mineral

Cass County, Minnesota, for Taxes Payable in the Year 1965.

Table with columns: IN WHOSE NAME ASSESSED, DESCRIPTION OF PROPERTY, TRUE AND FULL VALUATIONS, ASSESSED VALUATIONS, VALUATIONS BY SCHOOL DISTRICTS AS EQUALIZED BY DEPARTMENT OF TAXATION, TAX INCLUDING STATE HOMESTEAD, SPECIAL TAXES, TOTAL TAXES, PAID, WHEN PAID, Number of Receipt, March Settlement 1965, June Settlement 1965, Penalty, November Settlement 1965, Collections to First Monday in January 1966, Delinquent on First Monday in January 1966, Total Delinquent Tax and Penalty, REMARKS.

133-30

Village of Sylvan Lake

Carlyon's Sylvan Park

Sylvan Shady Shores Land & Allen's 2nd Add'n Sylvan Beach

Land & Allen's 1st Add'n Sylvan Beach

Assessment Roll For the Year 1964 and Tax List of Real Property in the Town of Sylvan of Cass County, Minnesota

Where "Yes" is Indicated in Homestead Column, Identify Description on Which House is Located by Letter "H" under the Word "Yes." - **Indicate Type of Property: R-Residential, C-Commercial, I-Industrial, U-Utility, F-Farm, L-Lakeshore, T-Timber, M-Mineral

Cass County, Minnesota, for Taxes Payable in the Year 1965.

Table with columns: IN WHOSE NAME ASSESSED, DESCRIPTION OF PROPERTY, TRUE AND FULL VALUATIONS, ASSESSED VALUATIONS, VALUATIONS BY SCHOOL DISTRICTS AS EQUALIZED BY DEPARTMENT OF TAXATION, TAXES, PAID, WHEN PAID, Number of Receipt, March Settlement 1965, June Settlement 1965, November Settlement 1965, Collections to First Monday in January 1966, Delinquent on First Monday in January 1966, Total Delinquent Tax and Penalty, REMARKS.

Village of Sylvan

North Sylvan Lake

Carlyon's Sylvan Park

Sylvan Shady Shores Land & Allen's 2nd Add'n Sylvan Beach Land & Allen's 3rd Add'n Sylvan Beach

Land & Allen's 1st Add'n Sylvan Beach

Roy Bertuleit, Carlyon's Sylvan Pk., State of Minnesota, Roy H. & Josephine Mitchell

PAID IN FULL MAY 3 - 1965, PAID IN FULL MAY 28 1965

294 1305 1570 102 363 465

142120 340 14550

13040

Assessment Roll For the Year 1964 and Tax List of Real Property in the Town of Sylvan, Cass County, Minnesota, for Taxes Payable in the Year 1965.

Cass County, Minnesota, for Taxes Payable in the Year 1965.

Table with columns: IN WHOSE NAME ASSESSED, SYLVAN GOV'T SUBDIVISION, DESCRIPTION OF PROPERTY, TRUE AND FULL VALUATIONS, ASSESSED VALUATIONS, and FINAL EQUALIZED VALUE.

Table with columns: VALUATIONS BY SCHOOL DISTRICTS AS EQUALIZED BY DEPARTMENT OF TAXATION, TAXES, PAID, WHEN PAID, Number of Receipt, March Settlement 1965, June Settlement 1965, November Settlement 1965, Collections to First Monday in January 1966, Delinquent on First Monday in January 1966, Total Delinquent Tax and Penalty, and REMARKS.

Village of

Wordn Sylvan Lake

Sylvan Beach Carl on's Sylvan Park

Sylvan Shady Shores

Land & Allen's 2nd Add'n Sylvan Beach

Land & Allen's 3rd Add'n Sylvan Beach

Land & Allen's 1st Add'n Sylvan Beach

Assessment Roll For the Year 1964 and Tax List of Real Property in the

Where "Yes" is Indicated in Homestead Column, Identify Description on Which House is Located by Letter "H" under the Word "Yes." - *Indicate Type of Property: R-Residential, C-Commercial, I-Industrial, U-Utility, F-Farm, L-Lakeshore, T-Timber, M-Mineral

DESCRIPTION OF PROPERTY

Sylvan Beach

IN WHOSE NAME ASSESSED

Sec. of Lot, Town of Block, Ring, Number of Acres of Land

TRUE AND FULL VALUATIONS

LAND Exclusive of Structures and Improvements

BUILDINGS and Other Structures

MACHINERY Permanently Attached to Real Estate

TOTAL True and Full Value

ASSESSED VALUATIONS

RURAL: Homestead Up to \$4,000 20%, Over \$4,000 and Non-Homestead 33 1/3%

ALL OTHER: Homestead Up to \$4,000 25%, Over \$4,000 and Non-Homestead 40%

MACHINERY Permanently Attached to Real Estate 33 1/3%

Seasonal and Recreational Cabins 33 1/3%

TOTAL ASSESSED VALUE

Total Assessed Value as Equalized by the Board of Review

FINAL EQUALIZED VALUE

Table with columns for property description, assessed values, and final equalized value. Includes handwritten entries for Arthur Edward Bondeson, Frank & Mary E. Sullivan, Frank Roberts, Fred W. & Loretta M. Betcher, Daniel J. Stewart, Jessie W. & Blanche Stewart, Bryan M. & Rose M. Vinton, Harvey D. Covel & William Jean Kupitz, Susan & Joseph Sack.

Cass County, Minnesota, for Taxes Payable in the Year 1965.

Table with columns for school district valuations, taxes (SOLD FOR TAXES, SPECIAL TAXES, TOTAL TAXES), and payment status (PAID, WHEN PAID, Number of Receipt, Settlement 1965, June Settlement 1965, November Settlement 1965, Penalty, Collections to First Monday in January 1966, Delinquent on First Monday in January 1966, Total Delinquent Tax and Penalty, REMARKS). Includes handwritten notes and calculations.

North Sylvan Lake

North Sylvan Lake

North Sylvan Lake

North Sylvan Lake

North Sylvan Lake

Sylvan Shady Shores, Land & Allen's 2nd Add'n Sylvan Beach, Land & Allen's 3rd Add'n Sylvan Beach, Land & Allen's 1st Add'n Sylvan Beach

Assessment Roll For the Year 1964 and Tax List of Real Property in the Town of Sylvan of Sylvan

*Where "Yes" is Indicated in Homestead Column, Identify Description on Which House is Located by Letter "H" under the Word "Yes." - **Indicate Type of Property: R-Residential, C-Commercial, I-Industrial, U-Utility, F-Farm, L-Lakeshore, T-Timber, M-Mineral

Cass County, Minnesota, for Taxes Payable in the Year 1965.

Table with columns: IN WHOSE NAME ASSESSED, SYLVAN BEACH SUBDIVISION, DESCRIPTION OF PROPERTY, TRUE AND FULL VALUATIONS, ASSESSED VALUATIONS, VALUATIONS BY SCHOOL DISTRICTS AS EQUALIZED BY DEPARTMENT OF TAXATION, SOLD FOR TAXES, SPECIAL TAXES, TOTAL TAXES, PAID, WHEN PAID, Number of Receipt, March Settlement 1965, June Settlement 1965, November Settlement 1965, Collections to First Monday in January 1966, Delinquent on First Monday in January 1966, Total Delinquent Tax and Penalty, REMARKS.

Assessment Roll For the Year 1964 and Tax List of Real Property in the

Town of Sylvan

*Where "Yes" is Indicated in Homestead Column, Identify Description on Which House is Located by Letter "H" under the Word "Yes." - **Indicate Type of Property: R-Residential, C-Commercial, I-Industrial, U-Utility, F-Farm, L-Lakeshore, T-Timber, M-Mineral

Table with columns: IN WHOSE NAME ASSESSED, Land & Alien's 1st Add'n to Sylvan Beach, Description of Property, True and Full Valuations, Assessed Valuations (Rural, All Other, Machinery, Seasonal and Recreational Cabins, Total Assessed Value), Final Equalized Value, and Remarks.

2011 5160 7171 278 600 1327 2205

Cass County, Minnesota, for Taxes Payable in the Year 1965.

Table with columns: SOLD FOR TAXES, District, Valuations by School Districts as Equalized by Department of Taxation, Tax including State Homestead, State Tax on Non-Homestead, Special Taxes, Total Taxes, PAID, WHEN PAID, Number of Receipt, March Settlement 1965, June Settlement 1965, November Settlement 1965, Penalties, Collections to First Monday in January 1966, Delinquent on First Monday in January 1966, Total Delinquent Tax and Penalty, REMARKS.

1327 278-278 600-1927 878-2205 37246 26838 64084 1796 65880

Sylvan Shady Shores Add'n Sylvan Beach, Carlvop's Sylvan Park Add'n Sylvan Beach, Land & Alien's 1st Add'n Sylvan Beach, Land & Alien's 2nd Add'n Sylvan Beach, Land & Alien's 3rd Add'n Sylvan Beach, Jackson Acres

Assessment Roll For the Year 1964 and Tax List of Real Property in the Town of Sylvan of Cass County, Minnesota

Where "Yes" is Indicated in Homestead Column, Identify Description on Which House is Located by Letter "H" under the Word "Yes." - *Indicate Type of Property: R-Residential, C-Commercial, I-Industrial, U-Utility, F-Farm, L-Lakeshore, T-Timber, M-Mineral

Cass County, Minnesota, for Taxes Payable in the Year 1965.

Main table with columns: IN WHOSE NAME ASSESSED, DESCRIPTION OF PROPERTY, TRUE AND FULL VALUATIONS (LAND, BUILDINGS, MACHINERY, TOTAL), ASSESSED VALUATIONS (RURAL, ALL OTHER, MACHINERY, Seasonal and Recreational Cabins, TOTAL ASSESSED VALUE, Total Assessed Value as Equalized by the Board of Review), FINAL EQUALIZED VALUE, VALUATIONS BY SCHOOL DISTRICTS AS EQUALIZED BY DEPARTMENT OF TAXATION (District No., Rate, Mills), Tax (Including State Homestead, State Tax on Non-Homestead, SPECIAL TAXES, TOTAL TAXES), PAID, WHEN PAID, Number of Receipt, March Settlement 1965, June Settlement 1965, November Settlement 1965, Penalty, Collections to First Monday in January 1966, Delinquent on First Monday in January 1966, Total Delinquent Tax and Penalty, REMARKS.

Village of Sylvan Shady Shores, North Sylvan, Sylvan Beach, Sylvan Park, Add'n Sylvan Beach, Add'n Sylvan Beach, Add'n Sylvan Beach, Add'n Sylvan Beach

Land & Allen's 2nd Add'n Sylvan Beach, Land & Allen's 3rd Add'n Sylvan Beach, Add'n Sylvan Beach

(Continued)

905 7065 8970 102 21 2299 2722

4020 402 64534 17930 2158 77464

49126 26937 78 3481

Assessment Roll For the Year 1964 and Tax List of Real Property in the Town of Sylvan

Where "Yes" is Indicated in Homestead Column, Identify Description on Which House is Located by Letter "H" under the Word "Yes." - *Indicate Type of Property: R-Residential, C-Commercial, I-Industrial, U-Utility, F-Farm, L-Lakeshore, T-Timber, M-Mineral

Cass County, Minnesota, for Taxes Payable in the Year 1965.

Table with columns: IN WHOSE NAME ASSESSED, DESCRIPTION OF PROPERTY, TRUE AND FULL VALUATIONS, ASSESSED VALUATIONS, VALUATIONS BY SCHOOL DISTRICTS AS EQUALIZED BY DEPARTMENT OF TAXATION, SOLD FOR TAXES, PAID, WHEN PAID, Number of Receipt, March Settlement 1965, June Settlement 1965, November Settlement 1965, Collections to First Monday in January 1966, Delinquent on First Monday in January 1966, Total Delinquent Tax and Penalty, REMARKS.

Sylvan Shady Shore

Sylvan Beach

Allen's 1st

Allen's 2nd

Allen's 3rd

McKisson Acres

Assessment Roll For the Year 1964 and Tax List of Real Property in the Town of Sylvan

Where "Yes" is Indicated in Homestead Column, Identify Description on Which House is Located by Letter "H" under the Word "Yes." - *Indicate Type of Property: R-Residential, C-Commercial, I-Industrial, U-Utility, F-Farm, L-Lakeshore, T-Timber, M-Mineral

Cass County, Minnesota, for Taxes Payable in the Year 1965.

Table with multiple columns: IN WHOSE NAME ASSESSED, SUBDIVISION, DESCRIPTION OF PROPERTY, TRUE AND FULL VALUATIONS, ASSESSED VALUATIONS (RURAL, ALL OTHER, MICHIGAN), VALUATIONS BY SCHOOL DISTRICTS AS EQUALIZED BY DEPARTMENT OF TAXATION, SOLD FOR TAXES, SPECIAL TAXES, TOTAL TAXES, PAID, WHEN PAID, Number of Receipt, March Settlement 1965, June Settlement 1965, November Settlement 1965, Collections to First Monday in January 1966, Delinquent on First Monday in January 1966, Total Delinquent Tax and Penalty, REMARKS.

Continued

Hand & Allen's 2nd Add'n Sylvan Beach
Hand & Allen's 3rd Add'n Sylvan Beach
Ericson
Ericson Acres

Assessment Roll For the Year 1964 and Tax List of Real Property in the Town of Sylvan

Where "Yes" is indicated in Homestead Column, Identify Description on Which House is Located by Letter "H" under the Word "Yes." - Indicate Type of Property: R-Residential, C-Commercial, I-Industrial, U-Utility, F-Farm, L-Lakeshore, T-Timber, M-Mineral

Table with columns: IN/WHOSE NAME ASSESSED, SYLVAN SHADY SHORES SUBDIVISION, Section or Lot, Town or Block, Acres, School District, Indicate Homestead, Agri. Rec., Ind. Prop., Land Exclusions, Buildings, Machinery, Total True and Full Value, Rural (Homestead, Over \$4,000), All Other (Timber, Homestead, Over \$4,000, Machinery, Seasonal), Total Assessed Value, Final Equalized Value.

Cass County, Minnesota, for Taxes Payable in the Year 1965.

Table with columns: SOLD FOR TAXES, VALUATIONS BY SCHOOL DISTRICTS AS EQUALIZED BY DEPARTMENT OF TAXATION (District No., Rate, Mills), Tax Including State Homestead, State Tax on Non-Homestead, SPECIAL TAXES, TOTAL TAXES, PAID, WHEN PAID (Month, Day, Year), Number of Receipt, March Settlement, June Settlement, November Settlement, Collections to First Monday in January, Delinquent on First Monday in January, Total Delinquent Tax and Penalty, REMARKS.

Sylvan Shady Shores, Sylvan Park, Sylvan Beach, Sylvan Park, Sylvan Beach, Sylvan Park, Sylvan Beach

Part of Allen's 2nd Add'n Sylvan Beach, Part of Allen's 3rd Add'n Sylvan Beach, Part of Allen's 3rd Add'n Sylvan Beach, Part of Allen's 3rd Add'n Sylvan Beach

Assessment Roll For the Year 1964 and Tax List of Real Property in the Town of Sylvan

*Where "Yes" is Indicated in Homestead Column, Identify Description on Which House is Located by Letter "H" under the Word "Yes." - **Indicate Type of Property: R-Residential, C-Commercial, I-Industrial, U-Utility, F-Farm, L-Lakeshore, T-Timber, M-Mineral

Cass County, Minnesota, for Taxes Payable in the Year 1965.

Sylvan Shady Shore, Sylvan Park, Sylvan Beach, Sylvan Beach, Sylvan Beach

Table with columns: IN WHOSE NAME ASSESSED, SYLVAN SHADY SHORES SUBDIVISION, DESCRIPTION OF PROPERTY, TRUE AND FULL VALUATIONS, ASSESSED VALUATIONS, VALUATIONS BY SCHOOL DISTRICTS AS EQUALIZED BY DEPARTMENT OF TAXATION, TAX INCLUDING STATE HOMESTEAD, SPECIAL TAXES, TOTAL TAXES, PAID, WHEN PAID, Number of Receipt, March Settlement 1965, June Settlement 1965, November Settlement 1965, Collections to First Monday in January 1966, Delinquent on First Monday in January 1966, Total Delinquent Tax and Penalty, REMARKS.

Land & Allen's 2nd Add'n Sylvan Beach, Land & Allen's 3rd Add'n Sylvan Beach, Personal No. Acres

Assessment Roll For the Year 1964 and Tax List of Real Property in the Town of Sylvan

*Where "Yes" is indicated in Homestead Column, Identify Description on Which House is Located by Letter "H" under the Word "Yes." - **Indicate Type of Property: R-Residential, C-Commercial, I-Industrial, U-Utility, F-Farm, L-Lakeshore, T-Timber, M-Mineral

Cass County, Minnesota, for Taxes Payable in the Year 1965.

IN WHOSE NAME ASSESSED	DESCRIPTION OF PROPERTY	No. School District	Indicate Homestead Yes or No	Agricultural Yes or No	Indicate Type of Property	TRUE AND FULL VALUATIONS										Total Assessed Value as Equalized by the Board of Review	FINAL EQUALIZED VALUE	SOLD FOR TAXES	VALUATIONS BY SCHOOL DISTRICTS AS EQUALIZED BY DEPARTMENT OF TAXATION						State Tax on Non-Homestead	SPECIAL TAXES	SPECIAL TAXES	TOTAL TAXES	PAID	WHEN PAID	Number of Receipt	March Settlement 1965	June Settlement 1965	Penalty	November Settlement 1965	Penalty	Collections to First Monday in January 1966	Penalty	Delinquent on First Monday in January 1966	Total Delinquent Tax and Penalty	REMARKS																			
						LAND Exclusive of Structures and Improvements		BUILDINGS and Other Structures		MACHINERY Permanently Attached to Real Estate	TOTAL True and Full Value	RURAL		ALL OTHER					Seasonal and Recreational Cabins	TOTAL ASSESSED VALUE	District No.	District No.	District No.	District No.																		District No.	Tax Including State Homestead	Rate	Rate	Rate	Rate	Rate												
						Dollars	Dollars	Dollars	Dollars	Dollars	Dollars	Dollars	Dollars	Dollars	Dollars				Dollars	Dollars	Dollars	Dollars	Dollars	Dollars																		Dollars	Dollars	Dollars	Mills	Mills	Mills	Mills	Mills	Mills	Dollars	Dollars	Dollars	Dollars	Dollars	Dollars	Dollars	Dollars	Dollars	Dollars
Herbert & Olga H. Edwards	Land & Allen's 2nd Add'n. to Sylvan Beach SUBDIVISION PART of Gov't Lots 2 & 3 Sec. 11-133-30	116	No	Yes	L	150	480		630				210	210				1	210	2.10					5894	196	6090	2nd HALF PAID OCT 2 9 1965	21623																															
Clinton A. & Eleanor Larson			No	Yes	L	461			461				37	37				2	37	1038					1038	34	1072	1st HALF PAID MAY 2 8 1965			3085		3045																											
"			No	Yes	L	111			111				37	37				3	37	1038					1038	34	1072	PAID IN FULL MAY 2 1965																																
Robert J. & Virginia M. St. Cyr			No	Yes	L	111	450		561				187	187				4	187	5550					5550	774	5424	PAID IN FULL MAY 1 1965																																
"			No	Yes	L	120	540		660				220	220				5	220	6176					6176	204	6380	2nd HALF PAID OCT 4 7 1965																																
Henry A. & Katherine Schaper			No	Yes	L	99			99				33	33				6	33	926					926	30	956	1st HALF PAID OCT 4 1965																																
"			No	Yes	L	99			99				33	33				7	33	926					926	30	956	PAID IN FULL MAY 2 1965																																
M. H. & Naomi Ellen Ballard			No	No	T	30			30				10	10				9	30	306					306	10	316	2nd HALF PAID DEC 3 1965																																
Clinton O. & Carolyn M. Larson			No	No	L	30			30				10	10				10	30	306					306	10	316	1st HALF PAID MAY 2 8 1965																																
Neiland H. Ballard			No	Yes	F	90	246		330		110		110	110				11	110	3088					3088	102	3190	Balance Paid MAY 2 8 1965																																
Herbert E. & Martha Ballard			Yes	No	T	75			75		15		15	15				12	75	458					458	15	458	2nd HALF PAID OCT 2 9 1965																																
"			Yes	No	L	100	690		790		158		158	158				13	100	4830					4830	158	4830	1st HALF PAID OCT 2 9 1965																																
"			Yes	No	L	75			75		15		15	15				14	75	458					458	15	458	2nd HALF PAID OCT 2 9 1965																																
Paul E. & Brenda Freudenberg			No	No	T	90	600		690		230		230	230				15	90	7032					7032	214	7246	PAID IN FULL MAY 4 1965																																
"			No	No	T	90			90		30		30	30				16	90	918					918	28	946	PAID IN FULL MAY 4 1965																																
Jay L. & Leonelle Rice			No	Yes	L	120	513		633				211	211				17	120	5922					5922	196	6118	2nd HALF PAID OCT 9 7 1965																																
"			No	Yes	T	75			75				25	25				18	75	702					702	24	726	1st HALF PAID MAY 1 8 1965																																
William L. & Melvina Grasse			No	No	T	60			60		20		20	20				19	60	612					612	18	630	PAID IN FULL APR 1 1965																																
																		20																																										
						1756	4653		5809		108		410	1213				1323						37136	1508	53564				38758		13008		1798																										

Sylvan Beach Carl Olson's Ivan P. Allen's 2nd Add'n Sylvan Beach

Part of Allen's 2nd Add'n Sylvan Beach

McLisson Acres

Assessment Roll For the Year 1964 and Tax List of Real Property in the Town of Sylvan

Where "Yes" is Indicated in Homestead Column, Identify Description on Which House is Located by Letter "H" under the Word "Yes." - Indicate Type of Property: R-Residential, C-Commercial, I-Industrial, U-Utility, F-Farm, L-Lakeshore, T-Timber, M-Mineral

Cass County, Minnesota, for Taxes Payable in the Year 1965.

Table with columns: IN WHOSE NAME ASSESSED, DESCRIPTION OF PROPERTY, TRUE AND FULL VALUATIONS, ASSESSED VALUATIONS, VALUATIONS BY SCHOOL DISTRICTS AS EQUALIZED BY DEPARTMENT OF TAXATION, Tax including State Homestead, State Tax on Non-Homestead, SPECIAL TAXES, PAID, WHEN PAID, Number of Receipt, March Settlement 1965, June Settlement 1965, November Settlement 1965, Collections to First Monday in January 1966, Delinquent on First Monday in January 1966, Total Delinquent Tax and Penalty, REMARKS.

Sylvan Beach, Carl's 1st, Sylvan P., Add'n Sylvan Beach, Sylvan Shady Side, Add'n Sylvan Beach

Carl's 1st, Add'n Sylvan Beach, Add'n Sylvan Beach, Add'n Sylvan Beach, Add'n Sylvan Beach

Carl's 1st, Add'n Sylvan Beach, Add'n Sylvan Beach, Add'n Sylvan Beach

Assessment Roll For the Year 1964 and Tax List of Real Property in the Town of Sylvan

Where "Yes" is Indicated in Homestead Column, Identify Description on Which House is Located by Letter "H" under the Word "Yes." - *Indicate Type of Property: R-Residential, C-Commercial, I-Industrial, U-Utility, F-Farm, L-Lakeshore, T-Timber, M-Mineral

Cass County, Minnesota, for Taxes Payable in the Year 1965.

Table with columns: IN WHOSE NAME ASSESSED, DESCRIPTION OF PROPERTY, TRUE AND FULL VALUATIONS, ASSESSED VALUATIONS, VALUATIONS BY SCHOOL DISTRICTS AS EQUALIZED BY DEPARTMENT OF TAXATION, TAX INCLUDING STATE HOMESTEAD, SPECIAL TAXES, TOTAL TAXES, PAID, WHEN PAID, Number of Receipt, March Settlement 1965, June Settlement 1965, November Settlement 1965, Collections to First Monday in January 1966, Delinquent on First Monday in January 1966, Total Delinquent Tax and Penalty, REMARKS.

Sylvan Beach, Carl Pop's Land & Allen's 3rd Add'n Sylvan Beach

PERSONAL TO KISSON ACRES

Assessment Roll For the Year 1964 and Tax List of Real Property in the Town of Sylvan

Where "Yes" is Indicated in Homestead Column, Identify Description on Which House is Located by Letter "H" under the Word "Yes." - Indicate Type of Property: R-Residential, C-Commercial, I-Industrial, U-Utility, F-Farm, L-Lakeshore, T-Timber, M-Mineral

Table with columns: IN WHOSE NAME ASSESSED, DESCRIPTION OF PROPERTY, TRUE AND FULL VALUATIONS, ASSESSED VALUATIONS, and FINAL EQUALIZED VALUE. Includes handwritten entries for Leo Meister & George Jones, Mabel C. McKisson, etc.

Cass County, Minnesota, for Taxes Payable in the Year 1965.

Table with columns: SOLD FOR TAXES, VALUATIONS BY SCHOOL DISTRICTS AS EQUALIZED BY DEPARTMENT OF TAXATION, SPECIAL TAXES, TOTAL TAXES, PAID, WHEN PAID, Number of Receipt, March Settlement, June Settlement, November Settlement, Collections to First Monday in January 1966, Delinquent on First Monday in January 1966, Total Delinquent Tax and Penalty, REMARKS. Includes handwritten entries for PAID IN FULL MAY 27 1965, etc.

