

ASSESSMENT & TAX LIST - 1962  
Slater

INDEX TO SECTIONS

SECTION	PAGE
Sec. 1	
" 2	
" 3	
" 4	
" 5	
" 6	
" 7	
" 8	
" 9	
" 10	
" 11	
" 12	
" 13	
" 14	
" 15	
" 16	
" 17	
" 18	
" 19	
" 20	
" 21	
" 22	
" 23	
" 24	
" 25	
" 26	
" 27	
" 28	
" 29	
" 30	
" 31	
" 32	
" 33	
" 34	
" 35	
" 36	

For Convenience of Auditor in Showing Boundaries of School Districts

Township No. 142 Range No. 26 Mer. P. M.


*School District No. 718*

Returns Showing Grain Received in or Handled by Elevators, Warehouses and Mills in the \_\_\_\_\_ of \_\_\_\_\_ in the County of \_\_\_\_\_ for the Year Ending May 1, 1962.

MILLER-DAVIS CO., MINNEAPOLIS

NAMES OF OWNERS	ADDRESS	SUBDIVISION 1			★ Tax of 1/4 Mill Per Bushel Dollars Cts.	SUBDIVISION 2					★ Total Subdivision 2 No. Bushels	★ Tax of 1/4 Mill Per Bushel		★ Total Tax Dollars Cts.	REMARKS
		Bushels of Wheat	Bushels of Soy Beans	Bushels of Flax		Bushels of Corn	Bushels of Barley	Bushels of Rye	Bushels of Oats	Bushels of Buckwheat		Bushels of all Other Grains	Dollars		

Note ★ Assessors will not fill these Columns

Plat of Lakeside Park Real Estate

SUMMARY OF TAX COLLECTION

Original Levy	- - - - -	\$ 5911.90	
Additions	- - - - -	\$ _____	
			\$ _____
Abatements	- - - - -	\$ 10.08	
			\$ 5901.86

COLLECTIONS

March Settlement	- - - - -	\$ 813.73	
June Settlement	- - - - -	\$ 2225.64	
November Settlement	- - - - -	\$ 1625.75	
January Settlement	- - - - -	\$ 216.38	\$ 5481.50
			\$ _____
Over Collected	- - - - -	\$ _____	
Under Collected	- - - - -	\$ _____	
Delinquent	- - - - -	\$ 420.36	\$ _____
Total	- - - - -		\$ 5901.36

Plat of Park  
Lakeside Park  
Real Estate

### TABULAR SCHEDULE OF VALUATIONS,

LEVIED IN THE Town OF Slater

### RATES AND TAXES

COUNTY OF CASS, STATE OF MINNESOTA

School District No.	VALUATION BY SCHOOL DISTRICTS				RATE OF STATE TAXES	RATE OF COUNTY TAXES										RATE OF TOWN TAXES										SCHOOL TAXES			TAXES LEVIED									
	Agri-cultural Lands	Non-Agri-cultural Lands	Personal Property	Total Value of all Property except Money and Credits		Rev.	R. & B.	Welfare	Well Bonds and Int. Def.	Co. PERA	Rate of County Tax	Rev.	R. & B.	State Loan	Fire	Local	Special	State Loan	Deficiency	Tuition	Transportation	Local 1 Mill	Special	State Loan	Def.	C. O. PERA	Total School Taxes	ALL OTHER TAXES										
Dollars	Dollars	Dollars	Dollars	Mills	Mills	Mills	Mills	Mills	Mills	Mills	Mills	Mills	Mills	Mills	Mills	Mills	Mills	Mills	Mills	Mills	Mills	Mills	Mills	Mills	Mills	Mills	FUNDS	Rate	Amounts									
118	15,090	6509	2062 79 1991	25,652	11.831	3207	20.	49.74	13.67	5.29	.91	12.51	3.9	3.9	3.9																							

Total Number of Acres 3942.48  
 State of Minnesota )  
 COUNTY OF CASS )  
 I, J. C. Peterson  
 Auditor of said County and State aforesaid, do hereby certify that the  
 foregoing is true and correct Schedule, showing the valuation of all the taxable property, in the  
 of Slater, in said County, the several rates of Taxation and Totals of the  
 several Tax Funds levied thereon for the year A. D. 196 2  
 Witness my hand and official seal, this 25<sup>th</sup> day of January A. D. 196 3  
J. C. Peterson County Auditor  
By Helen Billon, Deputy

SEAL

Total Taxes Real Estate 4967.12  
 Pers. Prop. 944.78  
 Total 5911.90

Plat of  
 Lake State Park  
 Real Estate

COLLECTIONS OF TAXES OF 196

Town of *Blair*

CASS COUNTY, MINNESOTA

FUNDS	MARCH SETTLEMENT 1963	JUNE SETTLEMENT 1963	NOV. SETTLEMENT 1963	Amount Collected from Nov. 1st to First Monday in Jan. 1964	REDUCTIONS	Total Reductions and Collected	BALANCE UNCOLLECTED	ADDITIONS	Total Uncollected to First Monday in January, 1964
State-Non-Homestead,	18 82	71 40	56 79	535					
State-Homestead,	21 46	161 51	302 7	724					
County Revenue,	118 97	394 52	227 63	2793					
County Road and Bridge,	69 83	246 04	142 02	1742					
County Welfare,	173 67	611 90	353 30	4332					
County Bond and Interest,	47 73	168 17	97 07	1171					
PERA	18 47	65 08	375 6	462					
Co Nurse	3 18	11 19	6 47	79					
C H Bldg	6 98	24 60	142 0	174					
Town Revenue,	13 62	47 98	27 69	340					
Town Road and Bridge,	13 62	47 98	27 69	340					
Town State Loan,	13 62	47 98	27 69	340					
Tax	13 62	47 98	27 69	340					
School Local 1 Mill,	131 11	389 74	232 31	4355					
School Special,	20 88	73 56	42 46	520					
School State Loan,	110 82	390 46	225 37	2768					
Deficiency									
Tuition									
Transportation									
C. O.	13 51	47 61	27 48	337					
PERA	18 04	63 61	36 72	450					
Civ by agrec Ass Transp.	1 29	4 55	2 64	32					
	1 75	6 15	3 55	43					
	3 36	11 81	6 82	84					
	813 73	2825 64	1625 75	21638					

	School District No.	LOCAL 1 MILL	SPECIAL	STATE LOAN	Deficiency	C. O.	PERA	TOTALS
MARCH SETTLEMENT	118 A		43 47	10 40	55 19	6 73	8 98	124 77
	118 NA		87 64	10 48	55 63	6 78	9 06	169 59
	Totals		131 11	20 88	110 82	13 51	18 04	294 36
JUNE SETTLEMENT	118 C		325 34	53 90	286 10	34 89	46 61	646 84
	118 NA		164 40	19 66	104 36	12 72	17 00	318 14
	Totals		389 74	73 56	390 46	47 61	63 61	764 98
NOVEMBER SETTLEMENT	118 Q		122 74	29 36	155 12	19 00	25 39	352 31
	118 NA		109 57	13 10	69 55	8 48	11 33	212 03
	Totals		232 31	42 46	225 37	27 48	36 72	564 34
NOVEMBER to JANUARY	118 NA		43 55	5 20	27 65	3 37	4 50	84 27
	Totals		43 55	5 20	27 65	3 37	4 50	84 27
	ADDITIONS							
REDUCTIONS	School District No.							
	Totals							

Real Estate  
Lakewood Park

Assessment Roll and Tax List of Real Property in the Town of Slater

Form 5CD MILLER-DAVIS CO., MINNEAPOLIS

\* Indicate Type of Property: R-Residential, C-Commercial, I-Industrial, U-Utility, F-Farm, L-Lakeshore, T-Timber, M-Mineral

Cass County, Minnesota, for Taxes for the Year 1962.

Main assessment table with columns for property description, valuations, taxes, and payment status. Includes sub-headers for 'TRUE AND FULL VALUATIONS', 'ASSESSED VALUATIONS', and 'VALUATIONS BY SCHOOL DISTRICTS AS EQUALIZED BY DEPARTMENT OF TAXATION'. Rows 1-20 are listed with details such as 'U. S. of America' and 'GOVT LOT 1'.

Part of Lakeland Park



Assessment Roll and Tax List of Real Property in the Town of Slater

\* Indicate Type of Property: R-Residential, C-Commercial, I-Industrial, U-Utility, F-Farm, L-Lakeshore, T-Timber, M-Mineral

FORM 50-D MILLER-DAVIS CO., MINNEAPOLIS

Cass County, Minnesota, for Taxes for the Year 1962.

IN WHOSE NAME ASSESSED	DESCRIPTION OF PROPERTY				No. School District	Indicate Homestead Yes or No	Agri. or Sec. Rec. Yes or No	Indicate Type of Property	TRUE AND FULL VALUATIONS												SOLD FOR TAXES	VALUATIONS BY SCHOOL DISTRICTS AS EQUALIZED BY DEPARTMENT OF TAXATION						Tax Including State Homestead	State Tax on Non-Homestead	SPECIAL TAXES	SPECIAL TAXES	TOTAL TAXES	PAID	WHEN PAID	Number of Receipt	March Settlement 1963	June Settlement 1963	November Settlement 1963	Penalty	Collections to First Monday in January 1964	Penalty	Delinquent on First Monday in January 1964	Total Delinquent Tax and Penalty	REMARKS
	SUBDIVISION	Sec. or Lot	Town or Block	No. of Acres of Land					LAND EXCLUSIVE OF STRUCTURES AND IMPROVEMENTS				BUILDINGS AND OTHER STRUCTURES				MACHINERY PERMANENTLY ATTACHED TO REAL ESTATE					ALL OTHER				District No.	District Rate																	
U. S. of America					1	3	142.26	118																																				
State of Minnesota	2																																											
U. S. of America	3																																											
U. S. of America	4																																											
Josef Nilsson	6		41.52	720	740	R		300	56	356	237																																	
U. S. of America	7																																											
State of Minnesota	8																																											
U. S. of America	9																																											
U. S. of America	11																																											
U. S. of America	12																																											
U. S. of America	13																																											
U. S. of America	14																																											
U. S. of America	16																																											
U. S. of America	17																																											
U. S. of America	18																																											
U. S. of America	19																																											
	20		41.52					300	56	356	237																																	

State Park

Forest





Assessment Roll and Tax List of Real Property in the Town of Slater,

Cass County, Minnesota, for Taxes for the Year 1962.

Form 501 MILLER-DAVIS CO., MINNEAPOLIS

\* Indicate Type of Property: R-Residential, C-Commercial, I-Industrial, U-Utility, F-Farm, L-Lakeshore, T-Timber, M-Mineral

Main assessment roll table with columns: IN WHOSE NAME ASSESSED, DESCRIPTION OF PROPERTY, TRUE AND FULL VALUATIONS, ASSESSED VALUATIONS, VALUATIONS BY SCHOOL DISTRICTS AS EQUALIZED BY DEPARTMENT OF TAXATION, SOLD FOR TAXES, PAID, WHEN PAID, and REMARKS.

Assessment Roll and Tax List of Real Property in the Town of Slater, State of Minnesota

Cass County, Minnesota, for Taxes for the Year 1962.

Form SCD - MILLER-DAVIS CO., MINNEAPOLIS

Table with columns for Description of Property, True and Full Valuations, Assessed Valuations, and Final Equalized Value.

Table with columns for Valuations by School Districts, Taxes (SOLD FOR TAXES, SPECIAL TAXES, TOTAL TAXES), and Payment/Remarks sections.

Assessment Roll and Tax List of Real Property in the Town of Slater, State of Minnesota

Cass County, Minnesota, for Taxes for the Year 1962.

Form SCD MILLER-DAVIS CO., MINNEAPOLIS

Table with columns: IN WHOSE NAME ASSESSED, SUBDIVISION, DESCRIPTION OF PROPERTY, TRUE AND FULL VALUATIONS, ASSESSED VALUATIONS, VALUATIONS BY SCHOOL DISTRICTS AS EQUALIZED BY DEPARTMENT OF TAXATION, TAXES, PAID, WHEN PAID, etc.



Assessment Roll and Tax List of Real Property in the Town of Slater

\* Indicate Type of Property: R-Residential, C-Commercial, I-Industrial, U-Utility, F-Farm, L-Lakeshore, T-Timber, M-Mineral

Cass County, Minnesota, for Taxes for the Year 1962.

Form 30-D MILLER-DAVIS CO., MINNEAPOLIS

Table with columns: IN WHOSE NAME ASSESSED, DESCRIPTION OF PROPERTY, TRUE AND FULL VALUATIONS, ASSESSED VALUATIONS, VALUATIONS BY SCHOOL DISTRICTS AS EQUALIZED BY DEPARTMENT OF TAXATION, SOLD FOR TAXES, PAID, WHEN PAID, Number of Receipt, March Settlement 1963, June Settlement 1963, November Settlement 1963, Collections to First Monday in January 1964, Delinquent on First Monday in January 1964, Total Delinquent Tax and Penalty, REMARKS.

Assessment Roll and Tax List of Real Property in the Town of Slater

Form 5CD MILLER-DAVIS CO., MINNEAPOLIS

\* Indicate Type of Property: R-Residential, C-Commercial, I-Industrial, U-Utility, F-Farm, L-Lakeshore, T-Timber, M-Mineral

Table with columns: IN WHOSE NAME ASSESSED, DESCRIPTION OF PROPERTY, TRUE AND FULL VALUATIONS, ASSESSED VALUATIONS, and FINAL EQUALIZED VALUE. Includes handwritten entries for Carl and Freda Larson and Govt lots.

Cass County, Minnesota, for Taxes for the Year 1962.

Table with columns: VALUATIONS BY SCHOOL DISTRICTS AS EQUALIZED BY DEPARTMENT OF TAXATION, TAXES, PAID, WHEN PAID, and REMARKS. Includes handwritten entries for tax amounts and dates.

Assessment Roll and Tax List of Real Property in the Town of Slater

Cass County, Minnesota, for Taxes for the Year 1962.

Form 50D - MILLER-DAVIS CO., MINNEAPOLIS

\* Indicate Type of Property: R-Residential, C-Commercial, I-Industrial, U-Utility, F-Farm, L-Lakeshore, T-Timber, M-Mineral

Main assessment table with columns: IN WHOSE NAME ASSESSED, DESCRIPTION OF PROPERTY, TRUE AND FULL VALUATIONS, ASSESSED VALUATIONS, VALUATIONS BY SCHOOL DISTRICTS AS EQUALIZED BY DEPARTMENT OF TAXATION, TAX INCLUDING STATE HOMESTEAD, SPECIAL TAXES, TOTAL TAXES, PAID, WHEN PAID, Number of Receipt, March Settlement 1963, June Settlement 1963, November Settlement 1963, Collections to First Monday in January 1964, Delinquent on First Monday in January 1964, Total Delinquent Tax and Penalty, REMARKS.

Edgar A. and Norma H. Olson  
Milton A. and Dorothy L. Goodgaard  
" " " " " "

Clarence E. and Minnie L. Vanatta  
" " " " " "

Side of Park  
EAST SIDE







Assessment Roll and Tax List of Real Property in the Town of Slater

\* Indicate Type of Property: R-Residential, C-Commercial, I-Industrial, U-Utility, F-Farm, L-Lakeshore, T-Timber, M-Mineral

Form 5CD - MILLER-DAVIS CO., MINNEAPOLIS

Table with columns: IN WHOSE NAME ASSESSED, DESCRIPTION OF PROPERTY, TRUE AND FULL VALUATIONS, ASSESSED VALUATIONS, and FINAL EQUALIZED VALUE. Includes handwritten entries for names like George M. Ruggles, Charles C. and Beverly Ann Allison, etc.

(cont. on next page)

Cass County, Minnesota, for Taxes for the Year 1962.

Table with columns: VALUATIONS BY SCHOOL DISTRICTS AS EQUALIZED BY DEPARTMENT OF TAXATION, SPECIAL TAXES, TOTAL TAXES, PAID, WHEN PAID, and REMARKS. Includes handwritten notes and calculations.

Handwritten calculations: #158 = 4158, #103 = 833, #261 = 991, #118 = 15862, #72 = 6324, #22186













Assessment Roll and Tax List of Real Property in the Town of Slater,

Form SCD - MILLER-DAVIS CO., MINNEAPOLIS

\* Indicate Type of Property: R-Residential, C-Commercial, I-Industrial, U-Utility, F-Farm, L-Lakeshore, T-Timber, M-Mineral

Cass County, Minnesota, for Taxes for the Year 1962.

Table with columns: IN WHOSE NAME ASSESSED, DESCRIPTION OF PROPERTY, TRUE AND FULL VALUATIONS, ASSESSED VALUATIONS, VALUATIONS BY SCHOOL DISTRICTS AS EQUALIZED BY DEPARTMENT OF TAXATION, PAID, WHEN PAID, and REMARKS. Rows 1-20 detail property assessments and tax details for various lots in Slater, MN.

Assessment Roll and Tax List of Real Property in the Town of Slater,  
 \* Indicate Type of Property: R-Residential, C-Commercial, I-Industrial, U-Utility, F-Farm, L-Lakeshore, T-Timber, M-Mineral

Cass County, Minnesota, for Taxes for the Year 1962.

Form SCD - MILLER-DAVIS CO., MINNEAPOLIS

IN WHOSE NAME ASSESSED	DESCRIPTION OF PROPERTY				No. School District	Indicate Homestead Yes or No	Agri. or Seas. Recr. Yes or No	Indicate Type of Property	TRUE AND FULL VALUATIONS				ASSESSED VALUATIONS						FINAL EQUALIZED VALUE	SOLD FOR TAXES	VALUATIONS BY SCHOOL DISTRICTS AS EQUALIZED BY DEPARTMENT OF TAXATION						Tax Including State Homestead Mills	State Tax on Non-Homestead Mills	SPECIAL TAXES	SPECIAL TAXES	TOTAL TAXES	PAID	WHEN PAID	Number of Receipt	March Settlement 1961	June Settlement 1961	November Settlement 1961	Penalty	Collections to First Monday in January 1964	Penalty	Delinquent on First Monday in January 1964	Total Delinquent Tax and Penalty	REMARKS		
	SUBDIVISION	Sec. or Lot	Town or Block	Rng.					Number of Acres of Land	LAND Exclusive of Structures and Improvements	BUILDINGS and Other Structures	MACHINERY Permanently Attached to Real Estate	TOTAL True and Full Value	RURAL		ALL OTHER					TOTAL ASSESSED VALUE	Total Assessed Value as Equalized by the Board of Review	District No.	District No.	District No.	District No.																		District No.	
														Homestead Up to \$4,000 20%	Over \$4,000 and Non-Homestead 33 1/3%	Timber Land Class 3e 20%	Homestead Up to \$4,000 25%	Over \$4,000 and Non-Homestead 40%																											MACHINERY Permanently Attached to Real Estate 33 1/3%
	Acres 100ths	Dollars	Dollars	Dollars					Dollars	Dollars	Dollars	Dollars	Dollars	Dollars	Dollars	Dollars	Dollars	Dollars			Dollars	Dollars	Dollars	Dollars	Dollars	Dollars																		Dollars	Dollars
Vern and Olive Heyer State of Minnesota	1	N. 60 acs. of N 1/2 of NE 1/4 N 20-142-26-60	20	142	26	60	118	770	M/F		300	192	492		164							164		3564	140	3704	1	PAID IN FULL OCT 31 1961				3704					12713								
State of Minnesota	2	S. 20 acs. of N 1/2 of NE 1/4 N 20-142-26-60																																											
U. S. of America	3	SW 1/4 of NE 1/4																																											
U. S. of America	4	SE 1/4 of NE 1/4																																											
U. S. of America	5																																												
U. S. of America	6	NE 1/4 of NW 1/4																																											
U. S. of America	7	NW 1/4 of NW 1/4																																											
U. S. of America	8	SW 1/4 of NW 1/4																																											
U. S. of America	9	SE 1/4 of NW 1/4																																											
U. S. of America	10																																												
U. S. of America	11	NE 1/4 of SW 1/4																																											
U. S. of America	12	NW 1/4 of SW 1/4																																											
U. S. of America	13	SW 1/4 of SW 1/4, less R/W																																											
State of Minnesota	14	SE 1/4 of SW 1/4, less R/W																																											
State of Minnesota	15																																												
State of Minnesota	16	NE 1/4 of SE 1/4																																											
U. S. of America	17	NW 1/4 of SE 1/4																																											
U. S. of America	18	SW 1/4 of SE 1/4																																											
State of Minnesota	19	SE 1/4 of SE 1/4																																											
	20																																												

No Tax for 1962

No Tax for 1962

60

300

192

492

164

164

164

3564

140

3704

3704

Assessment Roll and Tax List of Real Property in the Town of Slater

Form SCD MILLER-DAVIS CO., MINNEAPOLIS

\* Indicate Type of Property: R-Residential, C-Commercial, I-Industrial, U-Utility, F-Farm, L-Lakeshore, T-Timber, M-Mineral

Table with columns: IN WHOSE NAME ASSESSED, SUBDIVISION, ACRES, 100THS, No. School District, Indicate Homestead, Agri. Recr., Indicate Type of Property, TRUE AND FULL VALUATIONS (LAND, BUILDINGS, MACHINERY, TOTAL), ASSESSED VALUATIONS (RURAL, ALL OTHER), TOTAL ASSESSED VALUE, Total Assessed Value as Equalized by the Board of Review, FINAL EQUALIZED VALUE.

Cass County, Minnesota, for Taxes for the Year 1962.

Table with columns: SOLD FOR TAXES, VALUATIONS BY SCHOOL DISTRICTS AS EQUALIZED BY DEPARTMENT OF TAXATION (District No., Rate), Tax including State Homestead, State Tax on Non-Homestead, SPECIAL TAXES, TOTAL TAXES, PAID, WHEN PAID (Month, Day, Year), Number of Receipt, March Settlement 1961, June Settlement 1961, November Settlement 1961, Penalty, Collections to First Monday in January 1961, Delinquent on First Monday in January 1961, Total Delinquent Tax and Penalty, REMARKS.

Assessment Roll and Tax List of Real Property in the Town of Slater

\* Indicate Type of Property: R-Residential, C-Commercial, I-Industrial, U-Utility, F-Farm, L-Lakeshore, T-Timber, M-Mineral

Form 5CD MILLER-DAVIS CO., MINNEAPOLIS

Cass County, Minnesota, for Taxes for the Year 1962.

Table with columns: IN WHOSE NAME ASSESSED, DESCRIPTION OF PROPERTY, TRUE AND FULL VALUATIONS, ASSESSED VALUATIONS, VALUATIONS BY SCHOOL DISTRICTS AS EQUALIZED BY DEPARTMENT OF TAXATION, TAXES, PAID, WHEN PAID, Number of Receipt, March Settlement 1963, June Settlement 1963, November Settlement 1963, Penalty, Collections to First Monday in January 1964, Delinquent on First Monday in January 1964, Total Delinquent Tax and Penalty, REMARKS.

Assessment Roll and Tax List of Real Property in the Town of Slater

\* Indicate Type of Property: R-Residential, C-Commercial, I-Industrial, U-Utility, F-Farm, L-Lakeshore, T-Timber, M-Mineral

Form SCD MILLER-DAVIS CO., MINNEAPOLIS

Cass County, Minnesota, for Taxes for the Year 1962.

Main table with columns for IN WHOSE NAME ASSESSED, DESCRIPTION OF PROPERTY, TRUE AND FULL VALUATIONS, ASSESSED VALUATIONS, VALUATIONS BY SCHOOL DISTRICTS AS EQUALIZED BY DEPARTMENT OF TAXATION, and various tax and payment columns. Includes handwritten entries for John J. and Delila H. Swing, Fred H. and Charles Barta, Anna and Charles M. Anderson, John H. and Chloe D. Karner, Paul Rayman, John H. and Chloe D. Karner, and O.M.L. and Luella A. Olson.





Assessment Roll and Tax List of Real Property in the Town of Slater, Cass County, Minnesota, for Taxes for the Year 1962.

FORM SCD - MILLER-DAVIS CO., MINNEAPOLIS \* Indicate Type of Property: R-Residential, C-Commercial, I-Industrial, U-Utility, F-Farm, L-Lakeshore, T-Timber, M-Mineral

Table with columns for 'DESCRIPTION OF PROPERTY', 'TRUE AND FULL VALUATIONS' (including Land, Buildings, Machinery, Rural, All Other), and 'ASSESSMENT ROLL' (including Sold for Taxes, District, and Valuation).

Table with columns for 'VALUATIONS BY SCHOOL DISTRICTS AS EQUALIZED BY DEPARTMENT OF TAXATION', 'Taxes' (SPECIAL, TOTAL, PAID), and 'Remarks'. Includes handwritten entries for 'PAID IN FULL' and various tax amounts.



Assessment Roll and Tax List of Real Property in the Town of Slater,  
 \* Indicate Type of Property: R-Residential, C-Commercial, I-Industrial, U-Utility, F-Farm, L-Lakeshore, T-Timber, M-Mineral

Cass County, Minnesota, for Taxes for the Year 1962.

IN WHOSE NAME ASSESSED	DESCRIPTION OF PROPERTY					No. School District	Indicate Homestead Yes or No	Agri. or Rec. Yes or No	Indicate Type of Property	TRUE AND FULL VALUATIONS				ASSESSED VALUATIONS										SOLD FOR TAXES	VALUATIONS BY SCHOOL DISTRICTS AS EQUALIZED BY DEPARTMENT OF TAXATION						SPECIAL TAXES	SPECIAL TAXES	TOTAL TAXES	PAID	WHEN PAID			Number of Receipt	March Settlement 1963	June Settlement 1963	November Settlement 1963	Penalty	Collections to First Monday in January 1964	Penalty	Delinquent on First Monday in January 1964	Total Delinquent Tax and Penalty	REMARKS															
	SUBDIVISION	Sec. or Lot	Town or Block	Rng.	Number of Acres of Land					LAND Exclusive of Structures and Improvements	BUILDINGS and Other Structures	MACHINERY Permanently Attached to Real Estate	TOTAL True and Full Value	ALL OTHER					MACHINERY Permanently Attached to Real Estate	Seasonal and Recreational Cabins	TOTAL ASSESSED VALUE	Total Assessed Value as Equalized by the Board of Review	FINAL EQUALIZED VALUE												Dollars	cts.	Dollars											cts.	Dollars	cts.	Dollars	cts.	Dollars	cts.	Dollars	cts.	Dollars	cts.	Dollars	cts.	Dollars	cts.
														RURAL	Over \$4,000 and Non-Homestead	Timber Land Class 3e	Homestead Up to \$4,000	Over \$4,000 and Non-Homestead							Over \$4,000 and Non-Homestead	Over \$4,000 and Non-Homestead	Over \$4,000 and Non-Homestead	Over \$4,000 and Non-Homestead	Over \$4,000 and Non-Homestead	District No.																																
U. S. of America	1				27 1/2				118																																																					
U. S. of America	2																																																													
State of Minnesota	3																																																													
State of Minnesota	4																																																													
U. S. of America	6																																																													
U. S. of America	7																																																													
U. S. of America	8																																																													
U. S. of America	9																																																													
U. S. of America	11																																																													
U. S. of America	12																																																													
U. S. of America	13																																																													
U. S. of America	14																																																													
	15																																																													
U. S. of America	16																																																													
U. S. of America	17																																																													
U. S. of America	18																																																													
U. S. of America	19																																																													
U. S. of America	20																																																													

U. S. of America  
 Clint E. Mason  
 Clint E. and Lea C. Mason  
 Geo. Backstrom

PAID IN FULL APR 20 1962  
 PAID IN FULL APR 25 1963  
 PAID IN FULL APR 19 1962

4224  
 11223

40  
 40  
 40  
 130  
 77  
 75  
 40  
 40  
 152  
 192

1674  
 1630  
 870  
 4174  
 66  
 64  
 870  
 130  
 1740  
 1694  
 870  
 4304

3434  
 870  
 4304

Assessment Roll and Tax List of Real Property in the Town of Natur

\* Indicate Type of Property: R-Residential, C-Commercial, I-Industrial, U-Utility, F-Farm, L-Lakeshore, T-Timber, M-Mineral

Form SCD, MILLER-DAVIS CO., MINNEAPOLIS

Cass County, Minnesota, for Taxes for the Year 1962.

IN WHOSE NAME ASSESSED	DESCRIPTION OF PROPERTY	No. School District	Indicate Homestead Yes or No	Agri. or Rec. Yes or No	Indicate Type of Property	TRUE AND FULL VALUATIONS			ASSESSED VALUATIONS										SOLD FOR TAXES	VALUATIONS BY SCHOOL DISTRICTS AS EQUALIZED BY DEPARTMENT OF TAXATION	Tax including State Homestead	State Tax on Non-Homestead	SPECIAL TAXES	SPECIAL TAXES	TOTAL TAXES	PAID	WHEN PAID	Number of Receipt	March Settlement 1963	June Settlement 1963	November Settlement 1963	Penalty	Collections to First Monday in January 1964	Penalty	Delinquent on First Monday in January 1964	Total Delinquent Tax and Penalty	REMARKS		
						LAND Exclusive of Structures and Improvements	BUILDINGS and Other Structures	MACHINERY Permanently Attached to Real Estate	TOTAL True and Full Value	Homestead Up to \$4,000 20%	Over \$4,000 and Non-Homestead 33 1/4%	Timber Land Class 3e 20%	Homestead Up to \$4,000 25%	Over \$4,000 and Non-Homestead 40%	MACHINERY Permanently Attached to Real Estate 33 1/4%	Seasonal and Recreational Cabins 33 1/4%	TOTAL ASSESSED VALUE	Total Assessed Value as Equalized by the Board of Review																				FINAL EQUALIZED VALUE	District No.
U. S. of America	GOVT LOT 1	28	142	26	118																																		
U. S. of America	GOVT LOT 2																																						
Harold C. and Emma C. Brammer	GOVT LOT 4	37				70	1/2	T	300			300		100		100																							
Donald L. Cone	GOVT LOT 5	29	50			70	1/2	L	436 291	828 552	1264 843			421 281	421 281																								
Harold Santh	GOVT LOT 6, less R/W	39	90			70	1/2	L	301 201		100 67	301 201			100 67																								
Harold A. Santh	W 1/4 of Gov't. lot 7, less to state					70	1/2	L	45 30		15 10	45 30			15 10																								
State of Minnesota	1/3 as. of W. 1/4 of Gov't. lot 7	1	33																																				
Ellsworth H. Bates	W 1/2 of E 1/2 of W 1/2 of Gov't. lot 7, less R/W					70	1/2	L	67 45		22 15	67 45			22 15																								
Hillie L. Kemper	E 1/4 of W 1/2 of Gov't. lot 7	2	95			70	1/2	L	54 36		18 12	54 36			18 12																								
Ernest H. and Mildred A. Snyder	W 1/4 of E 1/2 of Gov't. lot 7	2	95			70	1/2	L	54 36		18 12	54 36			18 12																								
Hewey and Stella Sobias	E 1/2 of W 1/2 of E 1/2 of Gov't. lot 7					70	1/2	L	36 24		12 8	36 24			12 8																								
Harold L. and Leah K. Santh	E 1/4 of Gov't. lot 7					70	1/2	L	90 60		30 20	90 60			30 20																								
"	"																																						
"	"																																						
(Cont. on next page)		113	63						1022 1383	552 828	1515 2211		244 315		331 421	525 736			559		179 = 726		2104 4336 16440	630	17070														

File of Park  
 F-68-5-101



\* Indicate Type of Property: R-Residential, C-Commercial, I-Industrial, U-Utility, F-Farm, L-Lakeshore, T-Timber, M-Mineral

Form 5CD MILLER-DAVIS CO., MINNEAPOLIS

Table with multiple columns: IN WHOSE NAME ASSESSED, DESCRIPTION OF PROPERTY (Subdivision, Acres, etc.), TRUE AND FULL VALUATIONS (Land, Buildings, Machinery, etc.), ASSESSED VALUATIONS (Rural, All Other, etc.), VALUATIONS BY SCHOOL DISTRICTS AS EQUALIZED BY DEPARTMENT OF TAXATION, SOLD FOR TAXES, and REMARKS.

Le Roy Griffin
U. S. of America
State of Minnesota
U. S. of America
U. S. of America
U. S. of America
U. S. of America
U. S. of America
U. S. of America
U. S. of America
U. S. of America
U. S. of America
U. S. of America
U. S. of America
State of Minnesota
State of Minnesota
U. S. of America
U. S. of America

REMARKS
11229

40

200 120 320 64

64

764

1390

1390

1390





Assessment Roll and Tax List of Real Property in the Town of Slater  
\* Indicate Type of Property: R-Residential, C-Commercial, I-Industrial, U-Utility, F-Farm, L-Lakeshore, T-Timber, M-Mineral

Form SCD MILLER-DAVIS CO., MINNEAPOLIS

Table with columns: IN WHOSE NAME ASSESSED, SUBDIVISION, Description of Property, TRUE AND FULL VALUATIONS, ASSESSED VALUATIONS (RURAL, ALL OTHER), and FINAL EQUALIZED VALUE.

Cass County, Minnesota, for Taxes for the Year 1962.

Table with columns: SOLD FOR TAXES, VALUATIONS BY SCHOOL DISTRICTS AS EQUALIZED BY DEPARTMENT OF TAXATION, Tax Including State Homestead, SPECIAL TAXES, TOTAL TAXES, PAID, WHEN PAID, Number of Receipt, and REMARKS.

Assessment Roll and Tax List of Real Property in the Town of Slater

Form 5CD MILLER-DAVIS CO., MINNEAPOLIS

\* Indicate Type of Property: R-Residential, C-Commercial, I-Industrial, U-Utility, F-Farm, L-Lakeshore, T-Timber, M-Mineral

Table with columns: IN WHOSE NAME ASSESSED, DESCRIPTION OF PROPERTY, TRUE AND FULL VALUATIONS, ASSESSED VALUATIONS, and FINAL EQUALIZED VALUE. Includes entries for C. Leslie Johnston, Eunice A. Siltan, and David P. and Amanda M. Bushaw.

Cass County, Minnesota, for Taxes for the Year 1962.

Table with columns: VALUATIONS BY SCHOOL DISTRICTS AS EQUALIZED BY DEPARTMENT OF TAXATION, TAXES, PAID, WHEN PAID, and REMARKS. Includes tax rates for various districts and payment schedules.



Assessment Roll and Tax List of Real Property in the Town of Slater

\* Indicate Type of Property: R-Residential, C-Commercial, I-Industrial, U-Utility, F-Farm, L-Lakeshore, T-Timber, M-Mineral

Cass County, Minnesota, for Taxes for the Year 1962.

Table with columns for Property Description, Valuations, Taxes, and Remarks. Includes entries for Geo. Backstrom, Andrew and Ruth Olson, Lester H. and Adeline Fern Pohl, Mahlon P. and Opal M. Swentkopske, Edward and Lillian E. Ralph, David and Amanda Bushaw, Adolph J. Janth, Carl J. and Agnes Haul, Harold J. and Leah C. Janth, Margaret J. Berg + Chester P. Berg, Norman O. and Mildred A. Erickson, Raymond M. Huber, Louise Carlson, Ralph M. and Mildred M. Miller, Elmer L. and Jelda Sparty, Fred A. and Beatrice Green.

LOT 5  
SEC. 34-142-26

N LINE 132'

LOT 4

E & W LINE

BERG

#22704-A

396'

64'

64'

275'

(30)

64'

65'

ERICKSON  
#22700

140'

35'

140'

210'

HUBER

#22707

80'

55'

20'

210'

85'

20'

GEORGE PAUL et al  
#22705

125'

BIG SAND LAKE

Miller

#22706

100'

175'

NW $\frac{1}{4}$  OF SE $\frac{1}{4}$

190'

Lakeside Park

Lot 29

35.5'

Assessment Roll and Tax List of Real Property in the Town of Slater, Cass County, Minnesota, for Taxes for the Year 1962.

Form SCD MILLER-DAVIS CO., MINNEAPOLIS

\* Indicate Type of Property: R-Residential, C-Commercial, I-Industrial, U-Utility, F-Farm, L-Lakeshore, T-Timber, M-Mineral

Main table with columns: IN WHOSE NAME ASSESSED, DESCRIPTION OF PROPERTY, TRUE AND FULL VALUATIONS, ASSESSED VALUATIONS, VALUATIONS BY SCHOOL DISTRICTS AS EQUALIZED BY DEPARTMENT OF TAXATION, SPECIAL TAXES, TOTAL TAXES, PAID, WHEN PAID, Number of Receipt, March Settlement 1963, June Settlement 1963, November Settlement 1963, Collections to First Monday in January 1964, Delinquent on First Monday in January 1964, Total Delinquent Tax and Penalty, REMARKS.

Part of Assessor's Office

Part of Assessor's Office

Assessment Roll and Tax List of Real Property in the Town of Slater

\* Indicate Type of Property: R-Residential, C-Commercial, I-Industrial, U-Utility, F-Farm, L-Lakeshore, T-Timber, M-Mineral

Form 500 MILLER-DAVIS CO., MINNEAPOLIS

Cass County, Minnesota, for Taxes for the Year 1962.

Table with columns: IN WHOSE NAME ASSESSED, DESCRIPTION OF PROPERTY, TRUE AND FULL VALUATIONS, VALUATIONS BY SCHOOL DISTRICTS AS EQUALIZED BY DEPARTMENT OF TAXATION, TAXES, PAID, WHEN PAID, Number of Receipt, March Settlement 1963, June Settlement 1963, Penalty, November Settlement 1963, Collections to First Monday in January 1964, Delinquent on First Monday in January 1964, Total Delinquent Tax and Penalty, REMARKS.

Assessment Roll and Tax List of Real Property in the \_\_\_\_\_ of \_\_\_\_\_  
 \* Indicate Type of Property: R-Residential, C-Commercial, I-Industrial, U-Utility, F-Farm, L-Lak

Form 5CD HILLER-DAVIS CO., MINNEAPOLIS

IN WHOSE NAME ASSESSED	DESCRIPTION OF PROPERTY					No. School District	Indicate Homestead Yes or No	Agri. or Sea. Rec. Yes or No	Indicate Type of Property	TRUE AND FULL VALUATIONS				ASSESSED						
	SUBDIVISION	Sec. of Lot	Town or Block	Rng.	Number of Acres of Land					LAND Exclusive of Structures and Improvements	BUILDINGS and Other Structures	MACHINERY Permanently Attached to Real Estate	TOTAL True and Full Value	RURAL		ALL OTHER				
														Dollars	Dollars	Dollars	Dollars	Homestead Up to \$4,000 20%	Over \$4,000 and Non-Homestead 33 1/3%	Timber Land Class 3e 20%
1	NE 1/4 of NE 1/4																			
2	NW 1/4 of NE 1/4																			
3	SW 1/4 of NE 1/4																			
4	SE 1/4 of NE 1/4																			
5																				
6	NE 1/4 of NW 1/4																			
7	NW 1/4 of NW 1/4																			
8	SW 1/4 of NW 1/4																			
9	SE 1/4 of NW 1/4																			
10																				
11	NE 1/4 of SW 1/4																			
12	NW 1/4 of SW 1/4																			
13	SW 1/4 of SW 1/4																			
14	SE 1/4 of SW 1/4																			
15																				
16	NE 1/4 of SE 1/4																			
17	NW 1/4 of SE 1/4																			
18	SW 1/4 of SE 1/4																			
19	SE 1/4 of SE 1/4																			
20																				

# PAGES

## 39

# THRU

## 46

# BLANK

Cass County, Minnesota, for Taxes for the Year 1962.

State Tax on Non-Homestead	SPECIAL TAXES	SPECIAL TAXES	TOTAL TAXES	PAID	WHEN PAID	Number of Receipt	March Settlement 1963	June Settlement 1963	Penalty Settlement 1963	November Settlement 1963	Penalty Settlement 1963	Collections to First Monday in January 1964	Penalty	Delinquent on First Monday in January 1964	Total Delinquent Tax and Penalty	REMARKS		
\$ cts.	\$ cts.	\$ cts.	\$ cts.		Month Day Year		\$ cts.	\$ cts.	\$ cts.	\$ cts.	\$ cts.	\$ cts.	\$ cts.	\$ cts.	\$ cts.			

Real Estate

List of Landside Farm

Page 39 of 41

Assessment Roll and Tax List of Real Property in the Town of Slater

\* Indicate Type of Property: R-Residential, C-Commercial, I-Industrial, U-Utility, F-Farm, L-Lakeshore, T-Timber, M-Mineral

Cass County, Minnesota, for Taxes for the Year 1962.

Plat of Lakeside Park

Table with columns: IN WHOSE NAME ASSESSED, SUBDIVISION, Sec. or Lot, Town or Block, Rng., Acres, No. School District, Indicate Home-Stead, Agr. or Sea-Teer, Indicate Type of Property, TRUE AND FULL VALUATIONS (LAND, BUILDINGS, MACHINERY, TOTAL), ASSESSED VALUATIONS (RURAL, ALL OTHER, MACHINERY, Seasonal and Recreational, TOTAL ASSESSED VALUE), and FINAL EQUALIZED VALUE.

Table with columns: VALUATIONS BY SCHOOL DISTRICTS AS EQUALIZED BY DEPARTMENT OF TAXATION (District No., Rate, Mills), Tax Including State Homestead, State Tax on Non-Homestead, SPECIAL TAXES, TOTAL TAXES, PAID, WHEN PAID, Number of Receipt, March Settlement, June Settlement, November Settlement, Collections to First Monday in January, Delinquent on First Monday in January, Total Delinquent Tax and Penalty, and REMARKS.

1016 3191 4197 333 844 1199 1522 4769 6291 500 1264 1764

1264 \$500 = \$500 4-18 27466 = 1264 70-118 12114 1080 39580

Real Estate

Assessment Roll and Tax List of Real Property in the Town of Slater

\* Indicate Type of Property: R-Residential, C-Commercial, I-Industrial, U-Utility, F-Farm, L-Lakeshore, T-Timber, M-Mineral

Form 50 MILLER-DAVIS CO., MINNEAPOLIS

Table with columns: IN WHOSE NAME ASSESSED, SUBDIVISION, Sec. or Lot, Town or Block, Rng., Number of Acres of Land, No. School District, Indicate Home-Stead, Agri. Sens. Recr. Yes or No, \* Indicate Type of Property, TRUE AND FULL VALUATIONS (LAND, BUILDINGS, MACHINERY, TOTAL), ASSESSED VALUATIONS (RURAL, ALL OTHER, MACHINERY, Seasonal and Recreational Cabins, TOTAL ASSESSED VALUE), Total Assessed Value as Equalized by the Board of Review, FINAL EQUALIZED VALUE.

(cont. on next page)

Cass County, Minnesota, for Taxes for the Year 1962.

Table with columns: SOLD FOR TAXES, VALUATIONS BY SCHOOL DISTRICTS AS EQUALIZED BY DEPARTMENT OF TAXATION (District No., Rate, Mills), Tax Including State Homestead, State Tax on Non-Homestead, SPECIAL TAXES, TOTAL TAXES, PAID, WHEN PAID, Number of Receipt, March Settlement 1963, June Settlement 1963, November Settlement 1963, Collections to First Monday in January 1964, Delinquent on First Monday in January 1964, Total Delinquent Tax and Penalty, REMARKS.

17103427

Assessment Roll and Tax List of Real Property in the Town of Slater

Form 50 MILLER-DAVIS CO., MINNEAPOLIS

\* Indicate Type of Property: R-Residential, C-Commercial, I-Industrial, U-Utility, F-Farm, L-Lakeshore, T-Timber, M-Mineral

Plat of Lakeside Park

Table with columns: IN WHOSE NAME ASSESSED, SUBDIVISION, Sec. or Lot, Town or Block, No. School District, Indicate Home-Stead, Agri. or Recr., Indicate Type of Property, TRUE AND FULL VALUATIONS, ASSESSED VALUATIONS, TOTAL ASSESSED VALUE, Total Assessed Value as Equalized by the Board of Review, FINAL EQUALIZED VALUE.

Cass County, Minnesota, for Taxes for the Year 1962.

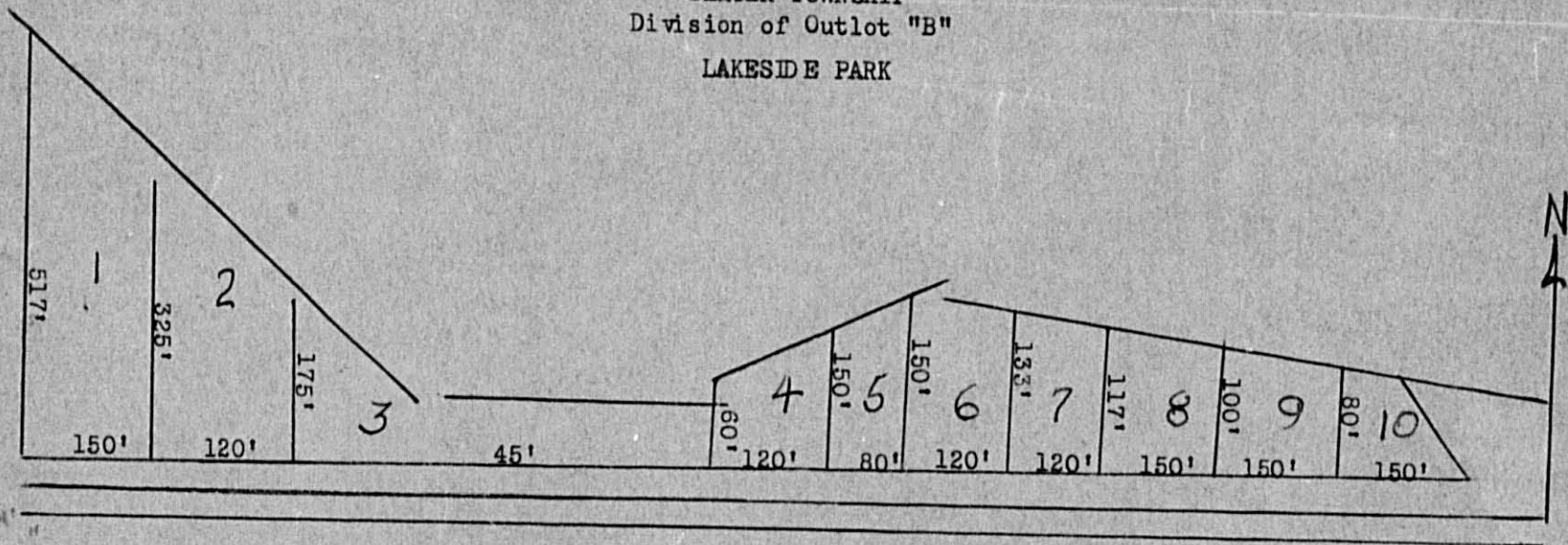
Table with columns: VALUATIONS BY SCHOOL DISTRICTS AS EQUALIZED BY DEPARTMENT OF TAXATION, SOLD FOR TAXES, Tax including State Homestead, State Tax on Non-Homestead, SPECIAL TAXES, TOTAL TAXES, PAID, WHEN PAID, Number of Receipt, March Settlement 1963, June Settlement 1963, November Settlement 1963, Collections to First Monday in January 1964, Delinquent on First Monday in January 1964, Total Delinquent Tax and Penalty, REMARKS.

Handwritten calculations and notes at the bottom right of the tax list table.





SLATER TOWNSHIP  
 Division of Outlot "B"  
 LAKESIDE PARK



- Lots
1. Henry Boos
  2. Benjamin Magnuson
  3. A. E. & Lelah Peterson
  4. Robert A. & Myrlite Kasper
  5. H. A. " . Kasper

6. H.A.W. Kasper
7. P.M. Kjaglien
8. Earl & Elsa Speck
9. Rose Nicklason
10. A. G. Erickson

