

ASSESSMENT & TAX LIST

Slater

1952







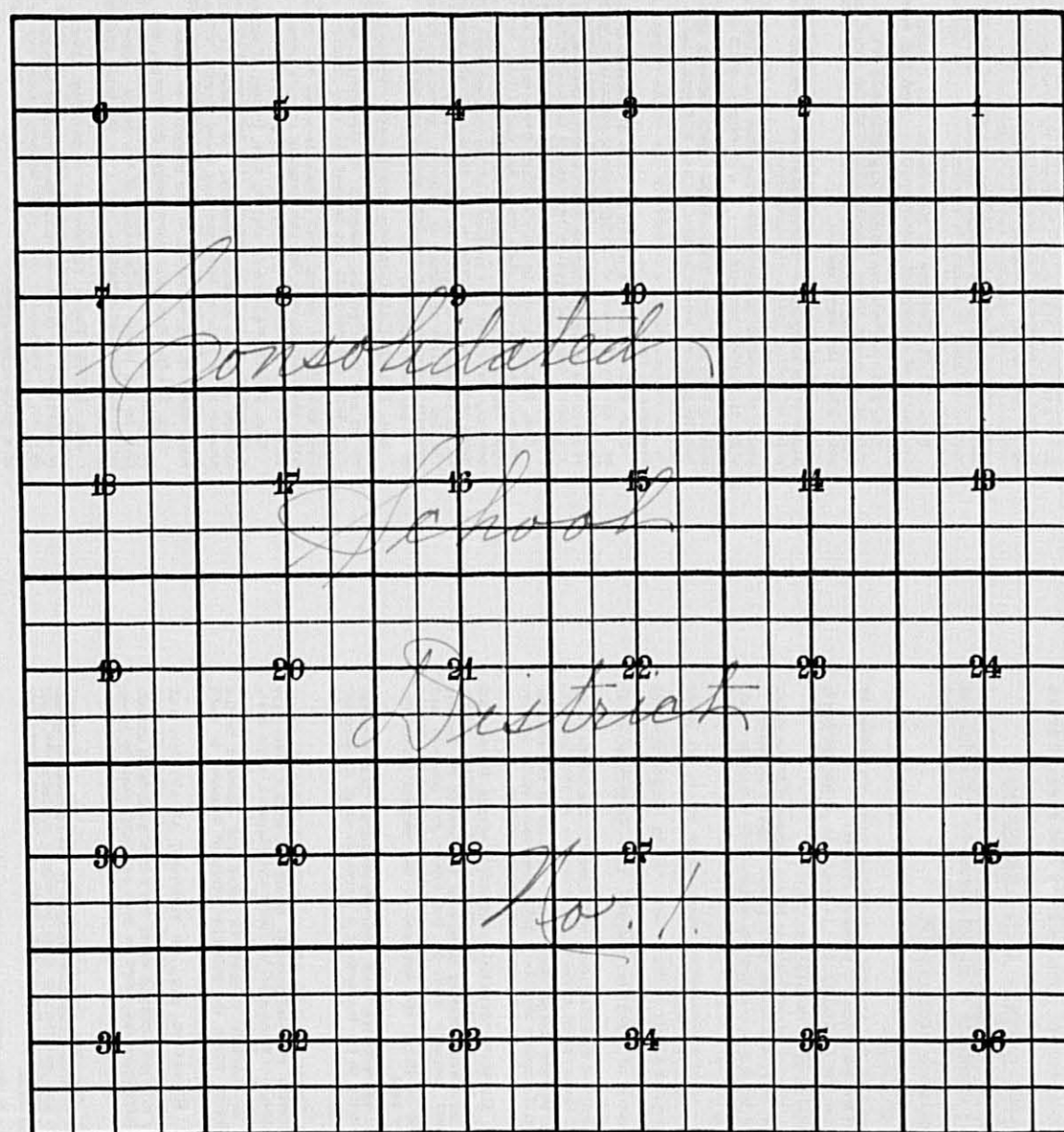
Returns Showing Grain Received in or Handled by Elevators, Warehouses and Mills in the \_\_\_\_\_ of \_\_\_\_\_ in the  
 County of \_\_\_\_\_ for the Year Ending May 1, 1952.

INDEX TO SECTIONS

SECTION	PAGE
Sec. 1	
" 2	
" 3	
" 4	
" 5	
" 6	
" 7	
" 8	
" 9	
" 10	
" 11	
" 12	
" 13	
" 14	
" 15	
" 16	
" 17	
" 18	
" 19	
" 20	
" 21	
" 22	
" 23	
" 24	
" 25	
" 26	
" 27	
" 28	
" 29	
" 30	
" 31	
" 32	
" 33	
" 34	
" 35	
" 36	

For Convenience of Auditor in Showing Boundaries of School Districts

Township No. 142 Range No. 26 Mer. P. M.



NAMES OF OWNERS	ADDRESS	Bushels of Wheat	Bushels of Soy Beans	Bushels of Flax	Total No. of Bushels of Wheat, Soy Beans and Flax	★ Tax of 1/2 Mill per Bushel		Bushels of Corn	Bushels of Barley	Bushels of Rye	Bushels of Oats	Bushels of Buckwheat	Bushels of all Other Grains	Total No. Bushels Corn, Barley, Rye, Oats, Buckwheat and all Other Grains	★ Tax of 1/4 Mill Per Bushel		★ Total Tax		REMARKS		
						Dollars	Cts.								Dollars	Cts.	Dollars	Cts.			

Note ★ Assessors will not fill these Columns



SUMMARY OF TAX COLLECTION

Original Levy	- - - - -	\$ 4130.46	
Additions	- - - - -	\$ _____	
			\$ 4130.46
Abatements	- - - - -	\$ 141.00	
			\$ 3989.46
COLLECTIONS			
March Settlement	- - - - -	\$ 692.15	
June Settlement	- - - - -	\$ 692.51	
November Settlement	- - - - -	\$ 1017.04	
January Settlement	- - - - -	\$ 93.38	\$ 3495.08
			\$ 494.38
Over Collected	- - - - -	\$ 14.69	
Under Collected	- - - - -	\$ _____	
Delinquent	- - - - -	\$ 509.07	\$ 494.38
Total	- - - - -		\$ 3989.46



TABULAR SCHEDULE OF VALUATIONS,

LEVIED IN THE Town OF Slater

School District No.	VALUATION BY SCHOOL DISTRICTS				RATE OF STATE TAXES	RATE OF COUNTY TAXES					RATE OF TOWN TAXES					RATE OF							
	Agricultural Lands	Non-Agricultural Lands	Personal Property	Total Value of all Property except Money and Credits		Rev.	R. & B.	Welfare	Bonds and Int.	Total Rate of County Tax	Rev.	R. & B.	Drag Tax	State Loan	Fire bld.	Total Rate of Town Tax	Local	Special	State Loan	Deficiency	Tuition	Transportation	
	Dollars	Dollars	Dollars	Dollars	Mills	Mills	Mills	Mills	Mills	Mills	Mills	Mills	Mills	Mills	Mills	Mills	Mills	Mills	Mills	Mills	Mills	Mills	
C#1	8064	3584	2081	14515	H. 4.58	27.1	12.8	61.3	14.3	105.5	6.9	13.8	1.	6.9	24.8	53.4	1.	25.	9.4	50.5	3.	5.4	18.
	8064	3584	2867	14515																			
					N. H. 2.26																		
					6.84																		
Assessed Value	Rural	All Other	Personal Property	Total																			
Homestead	6434			6434																			
Non-Homestead	5214		2867	8081																			
Total	11648		2867	14515																			

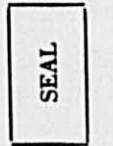
RATES AND TAXES

COUNTY OF CASS, STATE OF MINNESOTA

SCHOOL TAXES		LOCAL 1 MILL AND SPECIAL SCHOOL TAXES BY DISTRICTS										ALL OTHER TAXES		
Total Rate of Sch'l Tax	Total Rate of all Taxes	Local 1 Mill	Special	State Loan	Ref. Transp. C.O. B.&I.	Total School Taxes	FUNDS	Rate	Amounts					
112.3	275.78	10.14	253.62	9536	51287	3044	5478	18261	113927	State-Non-Homestead,		1830		
137.3	300.78	437	21850	4108	22068	1311	2360	7866	60000	State-Homestead,		6646		
		1451	47212	13644	73300	4355	7838	26127	173927	County Revenue,		39336		
										County Road and Bridge,		18579		
										County Welfare,		74462		
										Bonds and Interest		20756		
												153133		
										Town Revenue,		10015		
										Town Road and Bridge,		20031		
										Town Drag,		1452		
										Town State Loan,		10015		
										Fire Bond & Int.		35927		
												77510		
										School Local 1 Mill,		1451		
										School Special,		47212		
										School State Loan,		13644		
										Deficiency		73300		
										Tuition		4355		
										Transportation		7838		
										Capital Outlay		26127		
										Bond & Int.		173927		

Total Number of Acres 4130.46  
 State of Minnesota, ss. }  
 COUNTY OF CASS }  
 I, L. C. Peterson, Auditor of said County and State aforesaid, do hereby certify that the foregoing is true and correct Schedule, showing the valuation of all the taxable property, in the Town of Slater, in said County, the several rates of Taxation and Totals of the several Tax Funds levied thereon for the year A. D. 195 2.

Witness my hand and official seal, this 12<sup>th</sup> day of January, A. D. 195 3  
L. C. Peterson County Auditor.  
 By Helen Billew, Deputy



Total Taxes Real Estate 3313.72  
 Pers. Prop. 816.74  
 Total 4130.46











IN WHOSE NAME ASSESSED	TO WHOM TRANSFERRED	DESCRIPTION OF PROPERTY					TRUE AND FULL VALUATIONS										FINAL EQUALIZED VALUE	
		SUBDIVISION	Sec. of Lot	Town or Block	Rng.	Number of Acres of Land	LAND Exclusive of Structures and Improvements	BUILDINGS and Other Structures	MACHINERY Permanently Attached to Real Estate	TOTAL True and Full Value	RURAL		ALL OTHER		MACHINERY Permanently Attached to Real Estate	TOTAL ASSESSED VALUE		Total Assessed Value as Equalized by the Board of Review
											Acres	100ths	Homestead Up to \$4,000 20%	Over \$4,000 and Non-Homestead 33 1/3%				
U. S. of America		NE 1/4 of NE 1/4		2	14226													
U. S. of America		NW 1/4 of NE 1/4																
State of Minnesota		SW 1/4 of NE 1/4																
U. S. of America		SE 1/4 of NE 1/4																
U. S. of America		NE 1/4 of NW 1/4																
State of Minnesota		NW 1/4 of NW 1/4																
State of Minnesota		SW 1/4 of NW 1/4																
State of Minnesota		SE 1/4 of NW 1/4																
		NE 1/4 of SW 1/4																
State of Minnesota		NW 1/4 of SW 1/4																
U. S. of America		SW 1/4 of SW 1/4																
<i>Chas Anderson</i>		SE 1/4 of SW 1/4			29 75	145	40	185	37				37					
U. S. of America		NE 1/4 of SE 1/4																
State of Minnesota		NW 1/4 of SE 1/4																
U. S. of America		SW 1/4 of SE 1/4																
U. S. of America		SE 1/4 of SE 1/4																
					29 75	145	40	185	37				37					

SOLD FOR TAXES	VALUATIONS BY SCHOOL DISTRICTS AS EQUALIZED BY DEPARTMENT OF TAXATION						Tax including State Homestead	State Tax on Non-Homestead	SPECIAL TAXES	TOTAL TAXES	PAID	WHEN PAID	Number of Receipt	March Settlement 1953	June Settlement 1953	Penalty	November Settlement 1953	Penalty	Collections to First Monday in January 1954	Penalty	Delinquent on First Monday in January 1954	Total Delinquent Tax and Penalty	REMARKS
	District No.	District No.	District No.	District No.	District No.	District No.																	
	Rate	Rate	Rate	Rate	Rate	Rate																	
1																							
2																							
3																							
4																							
5																							
6																							
7																							
8																							
9																							
10																							
11																							
12																							
13																							
14																							
15																							
16																							
17																							
18																							
19																							
20																							

14 PAID IN FULL AUG 17 1953 12738 1020 26

#37

1020

1020

1020



















Assessment Roll and Tax List of Real Property in the Town of Down of State of Minnesota

IN WHOSE NAME ASSESSED	TO WHOM TRANSFERRED	DESCRIPTION OF PROPERTY				TRUE AND FULL VALUATIONS								ASSESSED VALUATIONS											SOLD FOR TAXES	VALUATIONS BY SCHOOL DISTRICTS AS EQUALIZED BY DEPARTMENT OF TAXATION						Tax including State Homestead	State Tax on Non-Homestead	SPECIAL TAXES	TOTAL TAXES	PAID	WHEN PAID	Number of Receipt	March Settlement 1953	June Settlement 1953	Penalty	November Settlement 1953	Penalty	Collections to First Monday in January 1954	Penalty	Delinquent on First Monday in January 1954	Total Delinquent Tax and Penalty	REMARKS
		SUBDIVISION	Sec. or Lot	Town or Block	Rng.	Number of Acres of Land	LAND Exclusive of Structures and Improvements	BUILDINGS and Other Structures	MACHINERY Permanently Attached to Real Estate	TOTAL True and Full Value	RURAL		ALL OTHER		MACHINERY Permanently Attached to Real Estate 33 1/3%	TOTAL ASSESSED VALUE	Total Assessed Value as Equalized by the Board of Review	District No.	District Rate	District No.	District Rate	District No.	District Rate	District No.		District Rate																						
											Acres	100ths	Homestead Up to \$4,000 20%	Over \$4,000 and Non-Homestead 33 1/3%													Homestead Up to \$4,000 25%	Over \$4,000 and Non-Homestead 40%	Dollars	Dollars	Dollars																	
Howard & Gladys I. Moody		NE 1/4 of NE 1/4	7	142.26	3575	1400		1600	320				320			1	2.70 Mills								8824	2.26 Mills	8824	1	2nd Half Paid OCT 30 1953	4292		4412	4412															
"	"	NW 1/4 of NE 1/4		40		200		200	40				40			2	2.70 Mills								1104		1104	2	1st Half Paid MAY 15 1953	5253		552	552															
Peter J. Rohlf		SW 1/4 of NE 1/4		40		201		201		67			67			3	2.70 Mills								1848	16	1864	3													1864 x 2050							
Howard & Gladys I. Moody		SE 1/4 of NE 1/4		40		200		200	40				40			4	2.70 Mills								1104		1104	4	2nd Half Paid OCT 30 1953	14362		552	552															
John H. & Hilma M. Daniels		NE 1/4 of NW 1/4		40		200	75	275	55				55			6	2.70 Mills								1516		1516	6	PAID IN FULL NOV 10 1953	1516										1516								
"	"	NW 1/4 of NW 1/4 Lot 1		40	93	200		200	40				40			7	2.70 Mills								1104		1104	7	PAID IN FULL NOV 10 1953	1104										1104								
State of Minnesota		SW 1/4 of NW 1/4 Lot 2														8																																
U. S. of America		SE 1/4 of NW 1/4														9																																
U. S. of America		NE 1/4 of SW 1/4														11																																
Peter J. Rohlf	U.S. of America	NW 1/4 of SW 1/4 Lot 3		41	37	210		210		70			70			12	2.70 Mills								1930	16	1946	12	PAID IN FULL FEB 4 1953	413		1946																
U. S. of America		SW 1/4 of SW 1/4 Lot 4														13																																
U. S. of America		SE 1/4 of SW 1/4														14																																
Howard & Gladys I. Moody		NE 1/4 of SE 1/4		40		200		200	40				40			16	2.70 Mills								1104		1104	16	2nd Half Paid OCT 30 1953	14362		552	552															
State of Minnesota		NW 1/4 of SE 1/4														17																																
Peter J. Rohlf		SW 1/4 of SE 1/4		40		210		210		70			70			18	2.70 Mills								1930	16	1946	18																1946 x 2141				
State of Minnesota		SE 1/4 of SE 1/4														19																																
																20																																
					35805	1821	1475	3296	535	207			742			#535	207	742							20464	48	20512					1946	6068	6068	2620	3810												











































































Assessment Roll and Tax List of Real Property in the Down of Water

IN WHOSE NAME ASSESSED	TO WHOM TRANSFERRED	DESCRIPTION OF PROPERTY				TRUE AND FULL VALUATIONS				ASSESSED VALUATIONS					FINAL EQUALIZED VALUE			
		SUBDIVISION	Sec. of Lot	Town or Block	Reg.	Number of Acres of Land	LAND Exclusive of Structures and Improvements	BUILDINGS and Other Structures	MACHINERY Permanently Attached to Real Estate	TOTAL True and Full Value	RURAL		ALL OTHER			MACHINERY Permanently Attached to Real Estate	TOTAL ASSESSED VALUE	Total Assessed Value as Equalized by the Board of Review
											Acres	100ths	Homestead Up to \$4,000 20%	Over \$4,000 and Non-Homestead 33 1/3%				
Joseph E. Swanson	State of Minnesota	NE 1/4 of NE 1/4 Lot 1	26	14226	2575	C-1	Year	290	150	440	88			88				
State of Minnesota		NW 1/4 of NE 1/4																
State of Minnesota		SW 1/4 of NE 1/4																
Roland M. Hicks		SE 1/4 of NE 1/4 Lot 2			36	50	No	150		150	50			50				
State of Minnesota		NE 1/4 of NW 1/4																
State of Minnesota		NW 1/4 of NW 1/4																
State of Minnesota		SW 1/4 of NW 1/4																
State of Minnesota		SE 1/4 of NW 1/4																
U. S. of America		NE 1/4 of SW 1/4																
U. S. of America		NW 1/4 of SW 1/4																
Thomas Swankier		SW 1/4 of SW 1/4			40		Year	160		160	32			32				
Francis Swankier		SE 1/4 of SW 1/4			40		"	200	235	435	87			87				
U. S. of America		NE 1/4 of SE 1/4																
U. S. of America		NW 1/4 of SE 1/4																
Russell V. & Bernice Vanatta		SW 1/4 of SE 1/4			40		No	201		201	67			67				
"		SE 1/4 of SE 1/4			40		"	200	175	375	125			125				
					222	25		1201	560	1761	207	242		449				

SOLD FOR TAXES	VALUATIONS BY SCHOOL DISTRICTS AS EQUALIZED BY DEPARTMENT OF TAXATION						Tax including State Homestead ..... Mills	State Tax on Non-Homestead 2.26 Mills	SPECIAL TAXES	TOTAL TAXES	PAID	WHEN PAID	Number of Receipt	March Settlement 1953	June Settlement 1953	Penalty	November Settlement 1953	Penalty	Collections to First Monday in January 1954	Penalty	Delinquent on First Monday in January 1954	Total Delinquent Tax and Penalty	REMARKS
	District No.	District No.	District No.	District No.	District No.	District No.																	
	Rate	Rate	Rate	Rate	Rate	Rate																	
1							2426		2426	1 PAID IN FULL	MAY 29 1953	10418		2426									
2																							
3																							
4							1378	12	1390	4 PAID IN FULL	MAY 29 1953	12300		1390									
5																							
6																							
7																							
8																							
9																							
10																							
11																							
12																							
13										882			882	13 PAID IN FULL	MAY 29 1953	10419				882			
14										2400			2400	14 PAID IN FULL	MAY 29 1953	10420				2400			
15																							
16																							
17																							
18										1848	16		1864	18 2nd Half Paid	OCT 31 1953	10421				932		932	
19										3448	28		3476	19 2nd Half Paid	OCT 31 1953	10422				1738		1738	
20										12382	56		12438	20 1st Half Paid	MAY 29 1953					9768		2670	



































34 Assessment Roll and Tax List of Real Property in the Town of Water, Cass County, Minnesota, for Taxes for the Year 1952.

Table with columns: IN WHOSE NAME ASSESSED, TO WHOM TRANSFERRED, DESCRIPTION OF PROPERTY, TRUE AND FULL VALUATIONS, ASSESSED VALUATIONS, VALUATIONS BY SCHOOL DISTRICTS AS EQUALIZED BY DEPARTMENT OF TAXATION, TAX INCLUDING STATE HOMESTEAD, SPECIAL TAXES, TOTAL TAXES, PAID, WHEN PAID, Number of Receipt, March Settlement 1953, June Settlement 1953, Penalty, November Settlement 1953, Penalty, Collections to First Monday in January 1954, Penalty, Delinquent on First Monday in January 1954, Total Delinquent Tax and Penalty, REMARKS.

Note: See Dec 30, 1951 for Normans & Mildred S. Erickson Part of Lot 5 - (Value should be combined)

Form 8CD (52) MILLER-SAYRE COMPANY, MINNEAPOLIS

Main table containing property details, valuations, and tax information for 20 lots. Includes handwritten entries for owners like Leo Ractstrom, Victor Fanth, and August M. & George L. Soltz.

PAID

PAID



Assessment Roll and Tax List of Real Property in the Town of *Shater*

IN WHOSE NAME ASSESSED	TO WHOM TRANSFERRED	DESCRIPTION OF PROPERTY				TRUE AND FULL VALUATIONS					ASSESSED VALUATIONS					FINAL EQUALIZED VALUE	SOLD FOR TAXES	VALUATIONS BY SCHOOL DISTRICTS AS EQUALIZED BY DEPARTMENT OF TAXATION						Tax Including State Homestead	State Tax on Non-Homestead	SPECIAL TAXES	TOTAL TAXES	PAID	WHEN PAID	Number of Receipt	March Settlement 1953	June Settlement 1953	Penalty	November Settlement 1953	Penalty	Collections to First Monday in January 1954	Penalty	Delinquent on First Monday in January 1954	Total Delinquent Tax and Penalty	REMARKS									
		SUBDIVISION	Sec. or Lot	Town or Block	Rng.	Number of Acres of Land	No. School District	Indicate Homestead Yes or No	Indicate Agricultural Yes or No	LAND Exclusive of Structures and Improvements	BUILDINGS and Other Structures	MACHINERY Permanently Attached to Real Estate	TOTAL True and Full Value	RURAL				ALL OTHER		MACHINERY Permanently Attached to Real Estate	TOTAL ASSESSED VALUE	Total Assessed Value as Equalized by the Board of Review	District No.																		District Rate	District No.	District Rate	District No.	District Rate	District No.	District Rate		
														Homestead Up to \$4,000	Over \$4,000 and Non-Homestead			Homestead Up to \$4,000	Over \$4,000 and Non-Homestead																													Homestead Up to \$4,000	Over \$4,000 and Non-Homestead
														20%	33 1/3%			25%	40%																													33 1/3%	
<i>Emma M. &amp; Walter A. Frank</i>		<i>NE 1/4 of NE 1/4</i>	<i>35</i>	<i>142</i>	<i>26</i>	<i>40</i>	<i>C-1</i>	<i>Yes</i>	<i>230</i>			<i>230</i>	<i>46</i>			<i>46</i>			<i>1</i>	<i>46</i>	<i>1268</i>	<i>22 1/2</i>	<i>1268</i>	<i>1</i>													<i>1268</i>												
"	"	<i>NW 1/4 of NE 1/4</i>			<i>40</i>		"	"	<i>200</i>			<i>200</i>	<i>40</i>			<i>40</i>			<i>2</i>	<i>40</i>	<i>1104</i>		<i>1104</i>	<i>2</i>												<i>1104</i>													
"	"	<i>SW 1/4 of NE 1/4</i>			<i>40</i>		"	"	<i>200</i>			<i>200</i>	<i>40</i>			<i>40</i>			<i>3</i>	<i>40</i>	<i>1104</i>		<i>1104</i>	<i>3</i>											<i>1104</i>														
"	"	<i>SE 1/4 of NE 1/4</i>			<i>40</i>		"	"	<i>220</i>	<i>175</i>	<i>395</i>	<i>79</i>				<i>79</i>			<i>4</i>	<i>40</i>	<i>2178</i>		<i>2178</i>	<i>4</i>	<i>2nd Half Paid</i>	<i>OCT 31 1953</i>	<i>14329</i>								<i>2178</i>														
<i>Phoebe Swenson</i>		<i>E 1/2 of NW 1/4 of N. 1/4</i>			<i>20</i>		"	"	<i>100</i>	<i>50</i>	<i>150</i>	<i>30</i>				<i>30</i>			<i>5</i>	<i>30</i>	<i>828</i>		<i>828</i>	<i>5</i>	<i>1st Half Paid</i>	<i>MAY 29 1953</i>	<i>10430</i>			<i>414</i>		<i>414</i>																	
<i>U. S. of America</i>		<i>NE 1/4 of NW 1/4</i>																	<i>6</i>																														
<i>U. S. of America</i>		<i>NW 1/4 of NW 1/4</i>																	<i>7</i>																														
<i>U. S. of America</i>		<i>SW 1/4 of NW 1/4 less Ry</i>																	<i>8</i>																														
<i>U. S. of America</i>		<i>SE 1/4 of NW 1/4</i>																	<i>9</i>																														
<i>State of Minnesota</i>		<i>NE 1/4 of SW 1/4 less Ry</i>																	<i>11</i>						<i>2nd Half Paid</i>	<i>OCT 2 1953</i>	<i>13905</i>			<i>1172</i>		<i>1172</i>																	
<i>John W. &amp; Emer M. Johnson</i>		<i>NW 1/4 of SW 1/4</i>			<i>40</i>		<i>Yes</i>	<i>200</i>	<i>225</i>		<i>425</i>	<i>85</i>				<i>85</i>			<i>12</i>	<i>85</i>	<i>2344</i>		<i>2344</i>	<i>12</i>	<i>1st Half Paid</i>	<i>MAY 29 1953</i>	<i>10429</i>									<i>3998</i>													
<i>A. St. De Groff</i>		<i>SW 1/4 of SW 1/4</i>			<i>40</i>		<i>Yes</i>	<i>250</i>	<i>475</i>		<i>725</i>	<i>145</i>				<i>145</i>			<i>13</i>	<i>145</i>	<i>3998</i>		<i>3998</i>	<i>13</i>												<i>3998</i>													
"	"	<i>SE 1/4 of SW 1/4</i>			<i>40</i>		"	<i>200</i>			<i>200</i>	<i>40</i>				<i>40</i>			<i>14</i>	<i>40</i>	<i>1104</i>		<i>1104</i>	<i>14</i>												<i>1104</i>													
<i>Emma M. &amp; Walter A. Frank</i>		<i>NE 1/4 of SE 1/4</i>			<i>40</i>		<i>Yes</i>	<i>200</i>			<i>200</i>	<i>40</i>				<i>40</i>			<i>16</i>	<i>40</i>	<i>1104</i>		<i>1104</i>	<i>16</i>												<i>1104</i>													
"	"	<i>NW 1/4 of SE 1/4 less Ry</i>			<i>39</i>		"	<i>195</i>			<i>195</i>	<i>39</i>				<i>39</i>			<i>17</i>	<i>39</i>	<i>1076</i>		<i>1076</i>	<i>17</i>											<i>1076</i>														
<i>Eugene Siegel</i>		<i>SW 1/4 of SE 1/4 lying d.t. of Ry</i>			<i>17</i>		"	<i>100</i>	<i>150</i>		<i>250</i>	<i>50</i>				<i>50</i>			<i>18</i>	<i>50</i>	<i>1378</i>		<i>1378</i>	<i>18</i>	<i>PAID IN FULL</i>	<i>MAY 29 1953</i>	<i>8449</i>			<i>1378</i>																			
<i>Lus Hendrickson</i>		<i>SE 1/4 of SE 1/4 less cemetery</i>			<i>35</i>		<i>No</i>	<i>185</i>	<i>100</i>		<i>285</i>	<i>95</i>				<i>95</i>			<i>19</i>	<i>95</i>	<i>2620</i>	<i>22</i>	<i>2642</i>	<i>19</i>	<i>PAID IN FULL</i>	<i>JUL 21 1953</i>	<i>11237</i>					<i>2642</i>	<i>40</i>																
<i>Reta Mary Stransky</i>		<i>all that part of NW 1/4 of SE 1/4 lying d.t. of Ry</i>			<i>18</i>		<i>Yes</i>	<i>100</i>	<i>150</i>		<i>250</i>	<i>50</i>				<i>50</i>			<i>20</i>	<i>50</i>	<i>1378</i>		<i>1378</i>	<i>20</i>	<i>PAID IN FULL</i>	<i>APR 29 1953</i>	<i>3875</i>			<i>1378</i>							<i>12936</i>												
					<i>450</i>			<i>2380</i>	<i>1325</i>		<i>3705</i>	<i>684</i>	<i>95</i>			<i>779</i>					<i>7684</i>	<i>22</i>	<i>21506</i>						<i>4342</i>	<i>4289</i>																			























LAKESIDE PARK

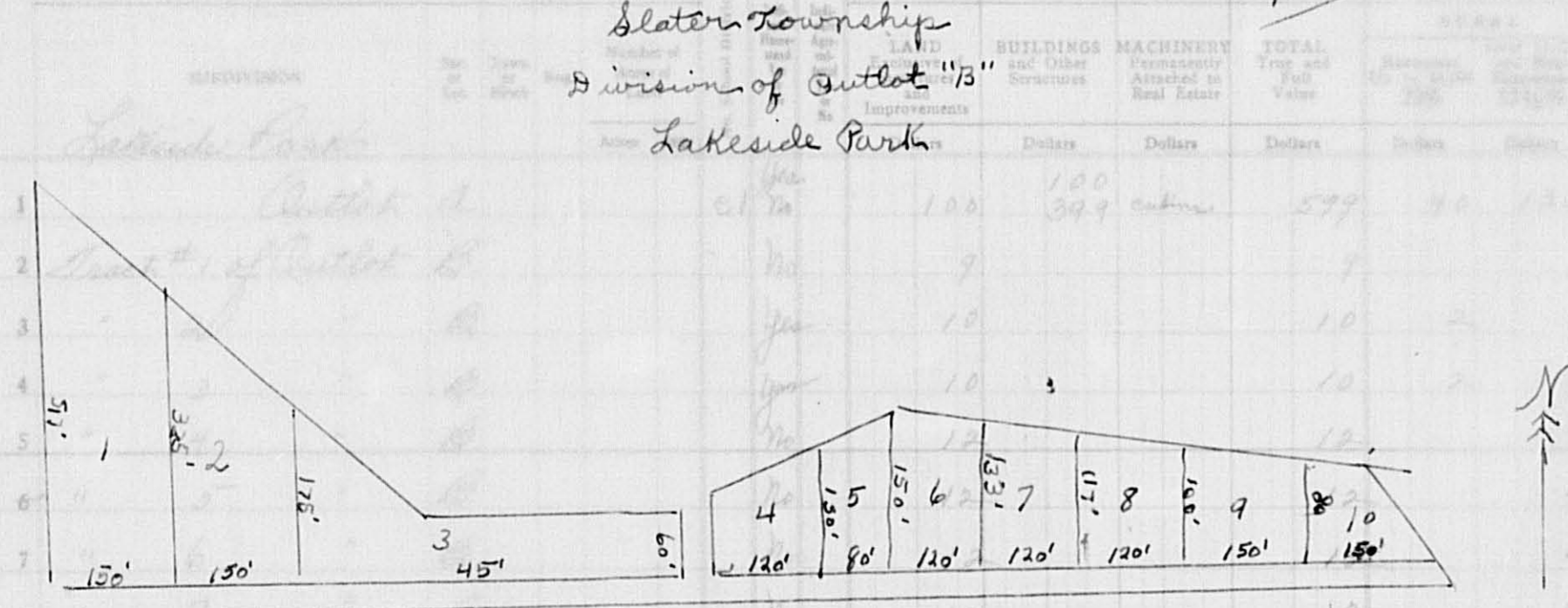
Form 5C (52) MINN. STATE DEPT. OF REVENUE

DESCRIPTION OF PROPERTY TRUE AND FULL VALUATIONS

ASSESSED VALUATIONS

VALUATIONS BY SCHOOL DISTRICTS AS EQUALIZED BY DEPARTMENT OF TAXATION

IN WHOSE NAME ASSESSED	TO WHOM TRANSFERRED	DESCRIPTION OF PROPERTY	LAND	BUILDINGS	MACHINERY	TOTAL
Delbert H. & Majine L. Bridge		Outlet 1	100	100		200
Henry P. Boos		Outlet 2	7			7
Benjamin Magnuson		Outlet 3	10			10
A. E. & Lelah Peterson		Outlet 4	10			10
Robert A. & Myrtle Kasper		Outlet 5	10			10
H. A. W. Kasper		Outlet 6	10			10
"		Outlet 7	10			10
P. M. Kjaaglien		Outlet 8	10			10
Carl & Elsa A. Speck		Outlet 9	10			10
Rose Therkelson		Outlet 10	10			10
A. S. Erickson		Outlet 11	10			10



Lot 1: Henry P. Boos  
 Lot 2: Benjamin Magnuson  
 Lot 3: A. E. & Lelah Peterson  
 Lot 4: Robert A. & Myrtle Kasper  
 Lot 5: H. A. W. Kasper  
 Lot 6: H. A. W. Kasper  
 Lot 7: P. M. Kjaaglien  
 Lot 8: Carl & Elsa A. Speck  
 Lot 9: Rose Therkelson  
 Lot 10: A. S. Erickson

ALL OTHER	Over \$4,000 and Non-Homestead 40%	MACHINERY Permanently Attached to Real Estate 33 1/3%	TOTAL ASSESSED VALUE	Total Assessed Value as Equalized by the Board of Review	FINAL EQUALIZED VALUE
			173		
			2		
			2		
			2		
			4		
			4		
			4		
			4		
			2		
			2		
			2		

SOLD FOR TAXES	VALUATIONS BY SCHOOL DISTRICTS AS EQUALIZED BY DEPARTMENT OF TAXATION						Tax including State Homestead	State Tax on Non-Homestead	SPECIAL TAXES	TOTAL TAXES	PAID	WHEN PAID	Number of Receipt	March Settlement 1953	June Settlement 1953	Penalty	November Settlement 1953	Penalty	Collections to First Monday in January 1954	Penalty	Delinquent on First Monday in January 1954	Total Delinquent Tax and Penalty	REMARKS
	District No.	District No.	District No.	District No.	District No.	District No.																	
1				40			52.04	30	52.34	1	PAID IN FULL	MAY 9 1953	5762		5234								
2				3			90	-	90	2	PAID IN FULL	MAY 4 1953	5716		90								
3				2			60	-	60	3	PAID IN FULL	MAY 29 1953	9976		60								
4				2			60	-	60	4	PAID IN FULL	MAY 29 1953	10434		60								
5				4			120	-	120	5	PAID IN FULL	MAY 29 1953	10438		120								
6				4			120	-	120	6	PAID IN FULL	OCT 1 1953	10436		120								
7				4			120	-	120	7	PAID IN FULL	OCT 1 1953	13250										
8				4			120	-	120	8	PAID IN FULL	OCT 31 1953	15217										
9				2			60	-	60	9	PAID IN FULL	MAY 28 1953	6485										
10				2			60	-	60	10	PAID IN FULL	MAY 29 1953	10432										
11				2			60	-	60	11	PAID IN FULL	FEB 28 1953	4322		60								
12										12													
13										13													
14										14													
15										15													
16										16													
17										17													
18										18													
19										19													
20										20													

Grand Totals - 411322  
 199 499  
 24 692 23120  
 21 872 23120  
 698 46 156  
 47812 6434 5274  
 11 448 11708

# 46  
 156  
 202  
 6074 30 6104  
 60 5865 199







