

Assessment & Tax List - 1963
Shingobee

REAL PROPERTY BECOMING SUBJECT TO TAXATION SINCE THE LAST PREVIOUS ASSESSMENT OR OMITTED FROM ASSESSMENT ROLLS THE PREVIOUS YEARS.

Assessment of Taxable Real Property in the _____ of _____, Minn., for the Year 19____.

* Indicate Type of Property: R-Residential, C-Commercial, I-Industrial, U-Utility, F-Farm, L-Lakeshore, T-Timber, M-Mineral

Form 316, WALKER-BAYNE COMPANY, MINNEAPOLIS

NAME OF OWNER	School District	DESCRIPTION OF PROPERTY				TRUE AND FULL VALUATIONS											FINAL EQUALIZED VALUE						
						BY WHOM VALUED	LAND EXCLUSIVE OF STRUCTURES AND IMPROVEMENTS		BUILDINGS AND OTHER STRUCTURES	MACHINERY PERMANENTLY ATTACHED TO REAL ESTATE	TOTAL TRUE AND FULL VALUE	ASSESSED VALUATIONS				TOTAL ASSESSED VALUE							
Subdivision	Sec. or Lot	Twp. or Block	Rng.	Number of Acres of Land			Indicate Homesteaded Yes or No	Indicate Agricultural Yes or No	Indicate Type of Property	Dollars	Dollars	Dollars	Dollars	RURAL		ALL OTHER		Dollars	Dollars	Dollars			
				Acres	100ths	Homestead Up to \$4,000 20%								Over \$4,000 and Non-Homestead 33 1/3%	Homestead Up to \$4,000 25%	Over \$4,000 and Non-Homestead 40%	MACHINERY Permanently Attached to Real Estate 33 1/3%				TOTAL ASSESSED VALUE		

Total No. of Acres _____
 Total Value as Equalized by _____
 Total Value as Assessed by _____

SUMMARY OF TAX COLLECTION

Original Levy - - - - - \$ 73,567.42
 Additions - - - - - \$ 161.18
 Abatements - - - - - \$ 427.92
 \$ 73,602.68

COLLECTIONS

March Settlement - - - - - \$ 9490.69
 June Settlement - - - - - \$ 70246.22
 November Settlement - - - - - \$ 20,034.36
 January Settlement - - - - - \$ 1376.28
 Over Collected - - - - - \$ 333.12
 Under Collected - - - - - \$ _____
 Delinquent - - - - - \$ 2788.25
 Total - - - - - \$ 73,602.68

Assessment of

COLLECTIONS OF TAXES OF 1964 OF CASS COUNTY, MINNESOTA

Form 314, MARCH 1964, MINNEAPOLIS

NAME OF OWNER

1

2

3

4

5

6

7

8

FUNDS	MARCH SETTLEMENT 1964	JUNE SETTLEMENT 1964	NOV. SETTLEMENT 1964	Amount Collected from Nov. 1964 to First Monday in Jan. 1965	REDUCTIONS	Total Reductions and Collected	BALANCE UNCOLLECTED	ADDITIONS	Total Uncollected to First Monday in January, 1965
State-Non-Homestead,	19579	100190	46114	3548					
State-Homestead,	19616	129649	63572	4367					
County Revenue,	116214	494986	245511	16819					
County Road and Bridge,	73763	317351	155831	16677					
County Welfare,	219482	944277	463674	31767					
County Bond and Interest,	7081	30466	14960	1634					
Co. Finance	3246	13963	6856	478					
P.L.A.	19068	82035	40282	3760					
Co. Ref.	664	2856	1402	96					
Town Revenue,	7376	31735	15583	1668					
Town Road and Bridge,	36882	158675	77915	5338					
Town State Loan,									
Com.	7376	31735	15583	1668					
File	11064	47603	23371	1601					
School Local 1 Mill,									
School Special,	172723	623339	336457	23021					
School State Loan,									
Deficiency	159108	684526	336127	23028					
Tuition									
Transportation									
Co	19473	83780	41139	2819					
B. I.	3709	16820	8259	566					
Bldg.	38748	167561	82279	5637					
S. H. Bldg.	7376	31735	15583	1668					
Ague Bldg.	1770	7616	3740	256					
Tramp	4351	18724	9144	630					
TOTALS	949669	4024622	2008436	137628					

School District No.	LOCAL 1 MILL	SPECIAL	STATE LOAN	Deficiency	C. O.	B + L	Bldg.	TOTALS
MARCH SETTLEMENT								
119a		11688		20166	2468	495	4936	39753
119na		161035		138942	17005	3414	34012	354408
Totals		172723		159108	19473	3909	38948	394161
JUNE SETTLEMENT								
119a		170039		293419	35912	7210	71824	578404
119na		453300		391107	47868	9610	95737	977622
Totals		623339		684526	83780	16820	167561	1576026
NOVEMBER SETTLEMENT								
119a		53120		91664	11219	2252	20438	180693
119na		283337		244463	29920	6007	59841	623568
Totals		336457		336127	41139	8259	82279	804261
NOVEMBER to JANUARY								
119a		3669		6331	775	156	1550	12481
119na		19252		16697	2044	410	4087	42590
Totals		23021		23028	2819	566	5637	55071
ADDITIONS								
Totals								
REDUCTIONS								
Totals								

14-31 Real Estate

SHINGOBE ISLAND CHIPPWA POINT WA SPRINGS MINN

Assessment Roll and Tax List of Real Property in the town of Stingobee, * Indicate Type of Property: R-Residential, C-Commercial, I-Industrial, U-Utility, F-Farm, L-Lakeshore, T-Timber, M-Mineral

Form 5C MILLER-DAVIS CO., MINNEAPOLIS

Cass County, Minnesota, for Taxes for the Year 1963.

14-31 Real Estate

Table with columns for IN WHOSE NAME ASSESSED, DESCRIPTION OF PROPERTY, TRUE AND FULL VALUATIONS, ASSESSED VALUATIONS, VALUATIONS BY SCHOOL DISTRICTS AS EQUALIZED BY DEPARTMENT OF TAXATION, SOLD FOR TAXES, PAID, WHEN PAID, Number of Receipt, March Settlement, June Settlement, November Settlement, Collections to First Monday in January, Delinquent on First Monday in January, Total Delinquent Tax and Penalty, REMARKS.

16479

14-31 Real Estate

Assessment Roll and Tax List of Real Property in the Town of Springdale

Cass County, Minnesota, for Taxes for the Year 1963.

Form 5C MILLER-DAVIS CO., MINNEAPOLIS

* Indicate Type of Property: R-Residential, C-Commercial, I-Industrial, U-Utility, F-Farm, L-Lakeshore, T-Timber, M-Mineral

14-31

Real Estate

Table with columns for Property Description, Valuations, Taxes, and Remarks. Includes entries for State of Minnesota, J.G. + Mabel M. Myers + Mabel L. Mitchell, Fred + Jane Huggett, Orval A. + Viola E. Bruner, Ida Ann Allen, Daniel David + Jesse E. Douglas Jr., John A. + Russell C. + Virginia Ann Green, Frank Ellerbrog, Stanley A. Peterson + Lorenz Ruckert, John S. + Mabel M. Myers + Mabel L. Mitchell, Stanley + Geraldine Peterson + Alice Huber, Evan H. Peterson, J.H. + Evelyn G. Beckley, Robert V. Bailey.

14-31

14-31

14-31

14-31

14-31

14-31

14-31

14-31

14-31

Assessment Roll and Tax List of Real Property in the Town of Stingobee, Cass County, Minnesota, for Taxes for the Year 1963.

Cass County, Minnesota, for Taxes for the Year 1963.

Form 5C MILLER-DAVIS CO., MINNEAPOLIS

Table with columns: IN WHOSE NAME ASSESSED, DESCRIPTION OF PROPERTY, TRUE AND FULL VALUATIONS, ASSESSED VALUATIONS, VALUATIONS BY SCHOOL DISTRICTS AS EQUALIZED BY DEPARTMENT OF TAXATION, TAX INCLUDING STATE HOMESTEAD, State Tax on Non-Homestead, SPECIAL TAXES, TOTAL TAXES, PAID, WHEN PAID, Number of Receipt, March Settlement, June Settlement, November Settlement, Collections to First Monday in January, Delinquent on First Monday in January, Total Delinquent Tax and Penalty, REMARKS.

14-31 Real Estate

Vertical text on the right edge of the page, including '14-31 Real Estate' and other document identifiers.

Assessment Roll and Tax List of Real Property in the Town of Shingobee

Cass County, Minnesota, for Taxes for the Year 1963.

Form 5C MILLER-DAVIS CO., MINNEAPOLIS

* Indicate Type of Property: R-Residential, C-Commercial, I-Industrial, U-Utility, F-Farm, L-Lakeshore, T-Timber, M-Mineral

14-31 Real Estate

Table with columns: IN WHOSE NAME ASSESSED, DESCRIPTION OF PROPERTY, TRUE AND FULL VALUATIONS, VALUATIONS BY SCHOOL DISTRICTS AS EQUALIZED BY DEPARTMENT OF TAXATION, TAXES, PAID, WHEN PAID, etc.

14-31 Real Estate SHINGOBEE BEACH SHINGOBEE ISLAND CHIPPEWA POINT MA SPRINGS AUBURN N'S POINT

Assessment Roll and Tax List of Real Property in the Town of Springdale

Cass County, Minnesota, for Taxes for the Year 1963.

Form 5C MILLER-DAVIS CO., MINNEAPOLIS

* Indicate Type of Property: R-Residential, C-Commercial, I-Industrial, U-Utility, F-Farm, L-Lakeshore, T-Timber, M-Mineral

14-31 Real Estate

Table with columns: IN WHOSE NAME ASSESSED, DESCRIPTION OF PROPERTY, TRUE AND FULL VALUATIONS, ASSESSED VALUATIONS, VALUATIONS BY SCHOOL DISTRICTS AS EQUALIZED BY DEPARTMENT OF TAXATION, TAXES, PAID, WHEN PAID, Number of Receipt, March Settlement 1964, June Settlement 1964, November Settlement 1964, Collections to First Monday in January 1965, Delinquent on First Monday in January 1965, Total Delinquent Tax and Penalty, REMARKS.

14-31 Real Estate, Springdale, Minnesota, for Taxes for the Year 1963.

Assessment Roll and Tax List of Real Property in the Town of Stungobee, Cass County, Minnesota, for Taxes for the Year 1963.

Form 50 MILLER-DAVIS CO., MINNEAPOLIS

* Indicate Type of Property: R-Residential, C-Commercial, I-Industrial, U-Utility, F-Farm, L-Lakeshore, T-Timber, M-Mineral

14-31 Real Estate

Table with columns: IN WHOSE NAME ASSESSED, DESCRIPTION OF PROPERTY, TRUE AND FULL VALUATIONS, ASSESSED VALUATIONS, and FINAL EQUALIZED VALUE. Includes entries for U.S. of America, Ethel Mann, and Wm J. + Catherine G. Bengkofor.

Cass County, Minnesota, for Taxes for the Year 1963.

Table with columns: VALUATIONS BY SCHOOL DISTRICTS AS EQUALIZED BY DEPARTMENT OF TAXATION, Tax including State Homestead, State Tax on Non-Homestead, SPECIAL TAXES, TOTAL TAXES, PAID, WHEN PAID, Number of Receipt, March Settlement 1964, June Settlement 1964, Penalty, November Settlement 1964, Penalty, Collections to First Monday in January 1965, Penalty, Delinquent on First Monday in January 1965, Total Delinquent Tax and Penalty, REMARKS.

14-31 Real Estate, Cass County, Minnesota, for Taxes for the Year 1963.

Assessment Roll and Tax List of Real Property in the Town of Shingabeau, Minnesota

Form 50 - MILLER-DAVIS CO., MINNEAPOLIS

Table with columns: IN WHOSE NAME ASSESSED, DESCRIPTION OF PROPERTY, TRUE AND FULL VALUATIONS, ASSESSED VALUATIONS, and FINAL EQUALIZED VALUE. Includes property details for U.S. of America, State of Minnesota, and W.J. Benzkofer.

Cass County, Minnesota, for Taxes for the Year 1963.

Table with columns: VALUATIONS BY SCHOOL DISTRICTS AS EQUALIZED BY DEPARTMENT OF TAXATION, TAX INCLUDING STATE, SPECIAL TAXES, TOTAL TAXES, PAID, WHEN PAID, and REMARKS. Includes tax amounts and payment dates.

14-31 Real Estate

SHINGABEAU ISLAND CHIPPWA POINT PINE SPRINGS LIBRARY

Assessment Roll and Tax List of Real Property in the Town of Stingohee

* Indicate Type of Property: R-Residential, C-Commercial, I-Industrial, U-Utility, F-Farm, L-Lakeshore, T-Timber, M-Mineral

Form 50 MILLER-DAVIS CO., MINNEAPOLIS

Table with columns: IN WHOSE NAME ASSESSED, DESCRIPTION OF PROPERTY, TRUE AND FULL VALUATIONS, ASSESSED VALUATIONS, and FINAL EQUALIZED VALUE. Includes handwritten entries for Harold E. Erno and John Littlejohn.

Cass County, Minnesota, for Taxes for the Year 1963.

Table with columns: VALUATIONS BY SCHOOL DISTRICTS AS EQUALIZED BY DEPARTMENT OF TAXATION, Tax including State Homestead, State Tax on Non-Homestead, SPECIAL TAXES, TOTAL TAXES, PAID, WHEN PAID, Number of Receipt, March Settlement 1964, June Settlement 1964, November Settlement 1964, Collections to First Monday in January 1965, Delinquent on First Monday in January 1965, Total Delinquent Tax and Penalty, REMARKS. Includes handwritten entries for Harold E. Erno and John Littlejohn.

14-31 Real Estate

14-31 Real Estate

Assessment Roll and Tax List of Real Property in the Town of Spring Lake

* Indicate Type of Property: R-Residential, C-Commercial, I-Industrial, U-Utility, F-Farm, L-Lakeshore, T-Timber, M-Mineral

Cass County, Minnesota, for Taxes for the Year 1963.

Form 50 MILLER-DAVIS CO., MINNEAPOLIS

Table with columns: IN WHOSE NAME ASSESSED, DESCRIPTION OF PROPERTY, TRUE AND FULL VALUATIONS, ASSESSED VALUATIONS, and FINAL EQUALIZED VALUE.

Table with columns: VALUATIONS BY SCHOOL DISTRICTS AS EQUALIZED BY DEPARTMENT OF TAXATION, TAX INCLUDING STATE HOMESTEAD, SPECIAL TAXES, TOTAL TAXES, PAID, WHEN PAID, and REMARKS.

14-31 Real Estate

14-31 Real Estate

Assessment Roll and Tax List of Real Property in the Town of Sturgeon

* Indicate Type of Property: R-Residential, C-Commercial, I-Industrial, U-Utility, F-Farm, L-Lakeshore, T-Timber, M-Mineral

Form 5C - MILLER-DAVIS CO., MINNEAPOLIS

14-31 Real Estate

Table with columns: IN WHOSE NAME ASSESSED, DESCRIPTION OF PROPERTY, TRUE AND FULL VALUATIONS, ASSESSED VALUATIONS, FINAL EQUALIZED VALUE. Includes entries for State of Minnesota, Hilding + Virginia Sandstrom, Burdette E. + Grace R. Anderson, Arthur C. + Marie Iho, etc.

Cass County, Minnesota, for Taxes for the Year 1963.

Table with columns: VALUATIONS BY SCHOOL DISTRICTS AS EQUALIZED BY DEPARTMENT OF TAXATION, Tax Including State Homestead, State Tax on Non-Homestead, SPECIAL TAXES, TOTAL TAXES, PAID, WHEN PAID, Number of Receipt, March Settlement, June Settlement, November Settlement, Collections to First Monday in January 1965, Delinquent on First Monday in January 1965, Total Delinquent Tax and Penalty, REMARKS. Includes entries for 1st HALF PAID, 2nd HALF PAID, PAID IN FULL, etc.

14-31 Sturgeon Beach SITINGOBER ISLAND CHIPPIWA POINT MINNAPOLIS

Assessment Roll and Tax List of Real Property in the Town of Longbeek

Form 5C - MILLER-DAVIS CO., MINNEAPOLIS

Main assessment table with columns: IN WHOSE NAME ASSESSED, DESCRIPTION OF PROPERTY, TRUE AND FULL VALUATIONS, ASSESSED VALUATIONS, and FINAL EQUALIZED VALUE.

Handwritten entries for property owners including: Allen D. + Pauline R. Wadsworth, Emma D. Siler, Gerald Trimble, Russell Davis, Alding + Virginia Sandstrom, Edward W. + Clarice O. Norman, Alding + Virginia Sandstrom, Marie Ischion, Cleanna Shre, Clara H. Jorgerson, Frank + Lois Orton.

Cass County, Minnesota, for Taxes for the Year 1963.

Tax payment table with columns: VALUATIONS BY SCHOOL DISTRICTS AS EQUALIZED BY DEPARTMENT OF TAXATION, Tax including State Homestead, State Tax on Non-Homestead, SPECIAL TAXES, TOTAL TAXES, PAID, WHEN PAID, Number of Receipt, and REMARKS.

Handwritten tax payment details including: 75, 326, 1162, 304, 45, 1162, 40, 7846, 272, 8118, 13628, 13628, 2322, 80, 2402, 1936, 66, 2002, 8 PAID IN FULL MAY 15 1964, 9760, 20.02, 13401, 13397, 375, 8740, 334, 9074, 10 PAID IN FULL MAY 29 1964, 10258, 90.74, 13416.

Summary calculations at the bottom right: 796, 18086, 28444, 1202, 46530, 47732, 26453, 17220, 4059.

14-31 Real Estate

Vertical text on the far right edge of the page: STATE'S FIRST ADD'N TO CHURCH CLERGE REACT, SHS-186 Beach SPRINGSBORO ISLAND CHIPPWA POINT BMA SPRINGS ALTRAVY N'S FORN

Assessment Roll and Tax List of Real Property in the Town of Stingobee

* Indicate Type of Property: R-Residential, C-Commercial, I-Industrial, U-Utility, F-Farm, L-Lakeshore, T-Timber, M-Mineral

Form 5C - MILLER-DAVIS CO., MINNEAPOLIS

Table with columns: IN WHOSE NAME ASSESSED, DESCRIPTION OF PROPERTY, TRUE AND FULL VALUATIONS, ASSESSED VALUATIONS, FINAL EQUALIZED VALUE.

Cass County, Minnesota, for Taxes for the Year 1963.

Table with columns: VALUATIONS BY SCHOOL DISTRICTS AS EQUALIZED BY DEPARTMENT OF TAXATION, TAX INCLUDING STATE HOMESTEAD, SPECIAL TAXES, TOTAL TAXES, PAID, WHEN PAID, Number of Receipt, March Settlement, June Settlement, November Settlement, Collections to First Monday in January, Delinquent on First Monday in January, Total Delinquent Tax and Penalty, REMARKS.

Real Estate

142-31, 142-31, Summize Beach, STINGOBBE ISLAND CHIPPWA POINT, PMA SPRINGS, CTRWAY, PMA SPRINGS

Assessment Roll and Tax List of Real Property in the Town of Shingobe, * Indicate Type of Property: R-Residential, C-Commercial, I-Industrial, U-Utility, F-Farm, L-Lakeshore, T-Timber, M-Mineral

Form 50 MILLER-DAVIS CO., MINNEAPOLIS

Cass County, Minnesota, for Taxes for the Year 1963.

Table with columns: IN WHOSE NAME ASSESSED, DESCRIPTION OF PROPERTY, TRUE AND FULL VALUATIONS, ASSESSED VALUATIONS, VALUATIONS BY SCHOOL DISTRICTS AS EQUALIZED BY DEPARTMENT OF TAXATION, TAX INCLUDING STATE HOMESTEAD, SPECIAL TAXES, TOTAL TAXES, PAID, WHEN PAID, Number of Receipt, March Settlement 1964, June Settlement 1964, Penalty, November Settlement 1964, Collections to First Monday in January 1965, Delinquent on First Monday in January 1965, Total Delinquent Tax and Penalty, REMARKS. Includes handwritten entries for State of Minnesota, Wheeler Lumber Bridge + Supply Co., and various U.S. of America parcels.

14-31 Real Estate

14-31 Real Estate, Cass County, Minnesota, for Taxes for the Year 1963, Shingobe Island Chippewa Point, BWA Springs, Library, N S Point

Assessment Roll and Tax List of Real Property in the Town of Shingobee

* Indicate Type of Property: R-Residential, C-Commercial, I-Industrial, U-Utility, F-Farm, L-Lakeshore, T-Timber, M-Mineral

Form 50 - MILLER-DAVIS CO., MINNEAPOLIS

Table with columns: IN WHOSE NAME ASSESSED, DESCRIPTION OF PROPERTY, TRUE AND FULL VALUATIONS, ASSESSED VALUATIONS, FINAL EQUALIZED VALUE.

Main data table with 20 rows, columns for property details, valuations, and final equalized value.

Cass County, Minnesota, for Taxes for the Year 1963.

Table with columns: VALUATIONS BY SCHOOL DISTRICTS AS EQUALIZED BY DEPARTMENT OF TAXATION, TAX INCLUDING STATE HOMESTEAD, SPECIAL TAXES, TOTAL TAXES, PAID, WHEN PAID, Number of Receipt, March Settlement, June Settlement, November Settlement, Collections to First Monday in January 1965, Delinquent on First Monday in January 1965, Total Delinquent Tax and Penalty, REMARKS.

14-31 Real Estate

14-31 SHINGOBEE BEACH SHINGOBEE ISLAND CHIPPWA POINT PAUL SPRINGS CTRAVAY

Assessment Roll and Tax List of Real Property in the Town of Spring Lake

* Indicate Type of Property: R-Residential, C-Commercial, I-Industrial, U-Utility, F-Farm, L-Lakeshore, T-Timber, M-Mineral

Form 50 - MILLER-DAVIS CO., MINNEAPOLIS

Cass County, Minnesota, for Taxes for the Year 1963.

Table with columns: IN WHOSE NAME ASSESSED, DESCRIPTION OF PROPERTY, TRUE AND FULL VALUATIONS, ASSESSED VALUATIONS, VALUATIONS BY SCHOOL DISTRICTS AS EQUALIZED BY DEPARTMENT OF TAXATION, SOLD FOR TAXES, PAID, WHEN PAID, Number of Receipt, March Settlement, June Settlement, November Settlement, Collections to First Monday in January 1965, Delinquent on First Monday in January 1965, Total Delinquent Tax and Penalty, REMARKS.

14-31 Real Estate

14-31 Sun-Isle Beach, Spring Lake Island, Chippewa Point, PMA Springs, Otterway, PMA Point

Assessment Roll and Tax List of Real Property in the Town of Shingobe

* Indicate Type of Property: R-Residential, C-Commercial, I-Industrial, U-Utility, F-Farm, L-Lakeshore, T-Timber, M-Mineral

Form 50 - MILLER-DAVIS CO., MINNEAPOLIS

Table with columns: IN WHOSE NAME ASSESSED, DESCRIPTION OF PROPERTY, TRUE AND FULL VALUATIONS, ASSESSED VALUATIONS, FINAL EQUALIZED VALUE. Includes entries for U.S. of America, State of Minnesota, and individuals like Robert W. + Pearl Robinson.

Cass County, Minnesota, for Taxes for the Year 1963.

Table with columns: SOLD FOR TAXES, VALUATIONS BY SCHOOL DISTRICTS AS EQUALIZED BY DEPARTMENT OF TAXATION, Tax including State Homestead, State Tax on Non-Homestead, SPECIAL TAXES, TOTAL TAXES, PAID, WHEN PAID, Number of Receipt, March Settlement, June Settlement, November Settlement, Collections to First Monday in January 1965, Delinquent on First Monday in January 1965, Total Delinquent Tax and Penalty, REMARKS. Includes tax details and payment dates.

14-31 Real Estate

14-31 Real Estate, SHINGOBE ISLAND, CHIPPEWA POINT, DNA SPRINGS, CITYWAY, N-S POINT

Assessment Roll and Tax List of Real Property in the Town of Stungobee

* Indicate Type of Property: R-Residential, C-Commercial, I-Industrial, U-Utility, F-Farm, L-Lakeshore, T-Timber, M-Mineral

Cass County, Minnesota, for Taxes for the Year 1963.

Table with columns: IN WHOSE NAME ASSESSED, DESCRIPTION OF PROPERTY, TRUE AND FULL VALUATIONS, ASSESSED VALUATIONS, VALUATIONS BY SCHOOL DISTRICTS AS EQUALIZED BY DEPARTMENT OF TAXATION, Tax including State Homestead, SPECIAL TAXES, TOTAL TAXES, PAID, WHEN PAID, Number of Receipt, March Settlement, June Settlement, Penalty, November Settlement, Collections to First Monday in January 1965, Delinquent on First Monday in January 1965, Total Delinquent Tax and Penalty, REMARKS.

14-31 Real Estate

14-31 Real Estate

Assessment Roll and Tax List of Real Property in the Town of Stungobee

* Indicate Type of Property: R-Residential, C-Commercial, I-Industrial, U-Utility, F-Farm, L-Lakeshore, T-Timber, M-Mineral

Cass County, Minnesota, for Taxes for the Year 1963.

Form 5C MILLER-DAVIS CO., MINNEAPOLIS

Table with columns: IN WHOSE NAME ASSESSED, DESCRIPTION OF PROPERTY, TRUE AND FULL VALUATIONS, ASSESSED VALUATIONS, and FINAL EQUALIZED VALUE. Rows 1-20 list property details for various subdivisions.

Table with columns: VALUATIONS BY SCHOOL DISTRICTS AS EQUALIZED BY DEPARTMENT OF TAXATION, TAXES, PAID, WHEN PAID, and REMARKS. Includes handwritten entries for taxes and payment dates.

14-31 Real Estate

14-31 Real Estate

Assessment Roll and Tax List of Real Property in the Town of Sturgeon

* Indicate Type of Property: R-Residential, C-Commercial, I-Industrial, U-Utility, F-Farm, L-Lakeshore, T-Timber, M-Mineral

Form 5C MILLER-DAVIS CO., MINNEAPOLIS

Table with columns: IN WHOSE NAME ASSESSED, DESCRIPTION OF PROPERTY, TRUE AND FULL VALUATIONS, ASSESSED VALUATIONS, and FINAL EQUALIZED VALUE. Includes handwritten entries for Mattie Krueger and Anne Marie Johnson + Caroline C. Lindstrom.

Cass County, Minnesota, for Taxes for the Year 1963.

Table with columns: VALUATIONS BY SCHOOL DISTRICTS AS EQUALIZED BY DEPARTMENT OF TAXATION, TAX INCLUDING STATE HOMESTEAD, State Tax on Non-Homestead, SPECIAL TAXES, TOTAL TAXES, PAID, WHEN PAID, Number of Receipt, March Settlement, June Settlement, November Settlement, Collections to First Monday in January 1965, Delinquent on First Monday in January 1965, Total Delinquent Tax and Penalty, REMARKS. Includes handwritten tax amounts and dates.

14-31 Real Estate

14-31 Real Estate, Mattie's First Add'n to Timber Grove Beach, Surprise Beach, Sturgeon Island, Chippewa Point, and Springs, Point

Assessment Roll and Tax List of Real Property in the Town of Sturgeon

* Indicate Type of Property: R-Residential, C-Commercial, I-Industrial, U-Utility, F-Farm, L-Lakeshore, T-Timber, M-Mineral

Form 50 MILLER-DAVIS CO., MINNEAPOLIS

Table with columns: IN WHOSE NAME ASSESSED, DESCRIPTION OF PROPERTY, TRUE AND FULL VALUATIONS, ASSESSED VALUATIONS, and FINAL EQUALIZED VALUE.

163.25

Cass County, Minnesota, for Taxes for the Year 1963.

Table with columns: VALUATIONS BY SCHOOL DISTRICTS AS EQUALIZED BY DEPARTMENT OF TAXATION, Tax including State Homestead, State Tax on Non-Homestead, SPECIAL TAXES, TOTAL TAXES, PAID, WHEN PAID, Number of Receipt, March Settlement, June Settlement, Penalty, November Settlement, Collections to First Monday in January 1965, Delinquent on First Monday in January 1965, Total Delinquent Tax and Penalty, REMARKS.

4 139 30 169

3938 26

3964

23.45 16.19

14-31 Real Estate FALL'S FIRST ADD'N TO ATTACHE GRASS BEACH SURF BEACH STURGEON ISLAND CHIPPWA POINT BIRD SPRINGS LITWAKY N-S POINT

Assessment Roll and Tax List of Real Property in the Town of Spring Lake, Minn.

* Indicate Type of Property: R-Residential, C-Commercial, I-Industrial, U-Utility, F-Farm, L-Lakeshore, T-Timber, M-Mineral

Form 50 MILLER-DAVIS CO., MINNEAPOLIS

Table with columns: IN WHOSE NAME ASSESSED, DESCRIPTION OF PROPERTY, TRUE AND FULL VALUATIONS, ASSESSED VALUATIONS, FINAL EQUALIZED VALUE.

(Cont. next page)

Cass County, Minnesota, for Taxes for the Year 1963.

Table with columns: VALUATIONS BY SCHOOL DISTRICTS AS EQUALIZED BY DEPARTMENT OF TAXATION, Tax Including State Homestead, State Tax on Non-Homestead, SPECIAL TAXES, TOTAL TAXES, PAID, WHEN PAID, Number of Receipt, March Settlement, June Settlement, November Settlement, Collections to First Monday in January 1965, Delinquent on First Monday in January 1965, Total Delinquent Tax and Penalty, REMARKS.

Vertical text on the right edge of the page: 142-31, Sunrise Beach, SHINGOBE ISLAND, CHIPPWA POINT, PINE SPRINGS, COUNTRY.

Assessment Roll and Tax List of Real Property in the Town of Sturgeon

Cass County, Minnesota, for Taxes for the Year 1963.

* Indicate Type of Property: R-Residential, C-Commercial, I-Industrial, U-Utility, F-Farm, L-Lakeshore, T-Timber, M-Mineral

Table with columns: IN WHOSE NAME ASSESSED, DESCRIPTION OF PROPERTY, TRUE AND FULL VALUATIONS, ASSESSED VALUATIONS, VALUATIONS BY SCHOOL DISTRICTS AS EQUALIZED BY DEPARTMENT OF TAXATION, Tax Including State Homestead, State Tax on Non-Homestead, SPECIAL TAXES, TOTAL TAXES, PAID, WHEN PAID, Number of Receipt, March Settlement 1964, June Settlement 1964, November Settlement 1964, Collections to First Monday in January 1965, Delinquent on First Monday in January 1965, Total Delinquent Tax and Penalty, REMARKS.

(Cont. next page)

14-31 Real Estate, 14-31, SHANCOBER ISLAND, CHIPPWA POINT, BNA SPRINGS, COTTEWAY, N'S POINT

Assessment Roll and Tax List of Real Property in the Town of Stingobee

Cass County, Minnesota, for Taxes for the Year 1963.

* Indicate Type of Property: R-Residential, C-Commercial, I-Industrial, U-Utility, F-Farm, L-Lakeshore, T-Timber, M-Mineral

Form 50 MILLER-DAVIS CO., MINNEAPOLIS

14-31 Real Estate

IN WHOSE NAME ASSESSED	DESCRIPTION OF PROPERTY			No. School District	Indicate Homestead Yes or No	Agricultural Rec. Yes or No	Indicate Type of Property	TRUE AND FULL VALUATIONS												FINAL EQUALIZED VALUE	
	SUBDIVISION	Sec. or Lot	Town or Rng. or Block					Number of Acres of Land Acres 100ths	ASSESSED VALUATIONS												
									LAND Exclusive of Structures and Improvements	BUILDINGS and Other Structures	MACHINERY Permanently Attached to Real Estate	TOTAL True and Full Value	RURAL		ALL OTHER						TOTAL ASSESSED VALUE
								Dollars	Dollars	Dollars	Dollars	Dollars	Dollars	Dollars	Dollars	Dollars	Dollars	Dollars			
1		25 14 31																			
2																					
3																					
4																					
5	Gurney W. + Beulah M. Brown																				
6																					
7	Lawrence J. (Casper) Hart																				
8																					
9																					
10	Marion H. + Miriam E. Rany																				
11	Richard J. Fredericksen																				
12	Richard G. + Ruth E. Hillis																				
13																					
14																					
15																					
16																					
17																					
18																					
19																					
20																					

SOLD FOR TAXES	VALUATIONS BY SCHOOL DISTRICTS AS EQUALIZED BY DEPARTMENT OF TAXATION						Tax Including State Homestead	State Tax on Non-Homestead	SPECIAL TAXES	SPECIAL TAXES	TOTAL TAXES	PAID	WHEN PAID	Number of Receipt	March Settlement 1964	June Settlement 1964	November Settlement 1964	Penalty	Collections to First Monday in January 1965	Penalty	Delinquent on First Monday in January 1965	Total Delinquent Tax and Penalty	REMARKS
	District No.	District No.	District No.	District No.	District No.	District No.																	
	Rate	Rate	Rate	Rate	Rate	Rate																	
	Mills	Mills	Mills	Mills	Mills	Mills																	
1																							
2																							
3																							
4																							
5							198	46 16	1 76		47 92	2nd HALF PAID SEP 2 2 1964 17 90									17 690	13 462	
6																							
7																							
8																							
9																							
10								3 88	1 4		4 02	PAID IN FULL APR 20 1964 6 962										13 696	
11																							
12								2 01	4 66	1 80	48 66	PAID IN FULL MAY 15 1964 9 858											13 464
13																							
14																							
15																							
16																							
17																							
18																							
19																							
20																							

14-31

Real Estate

Surprise Beach

SHINGOBEE ISLAND

CHIPPWA POINT

INA SPRINGS

OTWAY

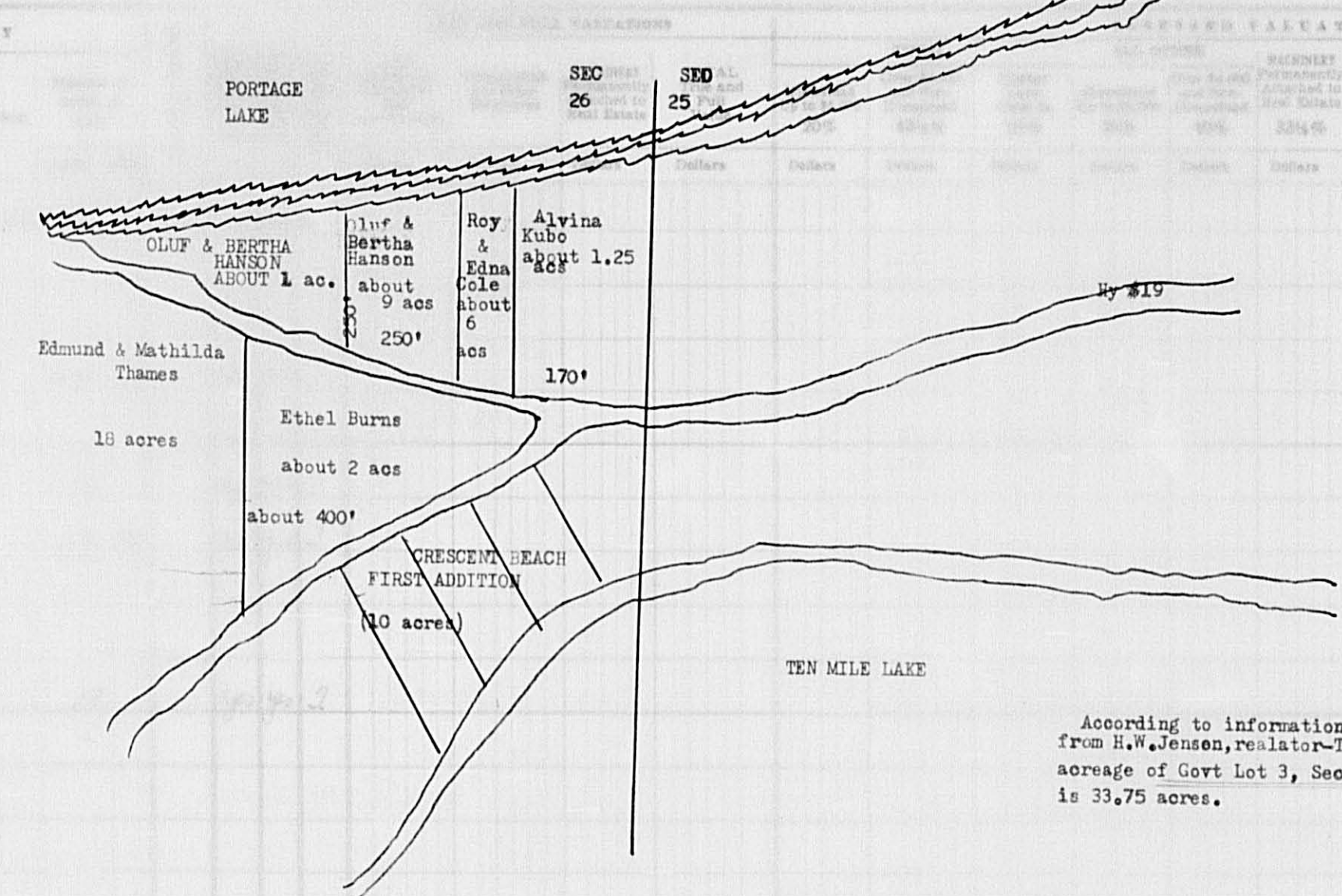
W'S POINT

Assessment Roll and Tax List of Real Property

Cass County, Minnesota, for Taxes for the Year 1963.

Form 50 MILLER-DAVIS CO., MINNEAPOLIS

IN WHOSE NAME ASSESSED	DESCRIPTION OF PROPERTY		SEC 26	SEC 25	VALUATION	FINAL EQUALIZED VALUE
	SUBDIVISION	Sec. or Lot				
Elizabeth S. & Hubert W. Lee	1 NE 1/4 of NE 1/4	26				
Elizabeth S. & Hubert W. Lee	2 NW 1/4 of NE 1/4 } Govt. Lot 1	26				
	3 SW 1/4 of NE 1/4					
Louis Krenger	4 SE 1/4 of NE 1/4 } Govt. Lot 2	26				
	5					
State of Minnesota	6 NE 1/4 of NW 1/4					
State of Minnesota	7 NW 1/4 of NW 1/4					
Edmund C. & Mathilda Thomas	8 SW 1/4 of NW 1/4					
U. S. of America	9 SE 1/4 of NW 1/4					
U. S. of America	10 Govt. Lot 3					
U. S. of America	11 NE 1/4 of SW 1/4					
U. S. of America	12 NW 1/4 of SW 1/4					
U. S. of America	13 Govt. Lot 6					
U. S. of America	14 Govt. Lot 5					
Oluf & Bertha Hanson	15 W. 250' of E. 420' of Govt. Lot 3 between Portage Lake & N. 1/4 Sec. 26					
Alvina Kubo	16 E. 170' of Govt. Lot 3 N. 1/4 Sec. 26					
U. S. of America	17 NW 1/4 of SE 1/4					
Clarence & Sadie Edenspetv	18 SW 1/4 of SE 1/4 Govt. Lot 4					
" " "	19 SE 1/4 of SE 1/4 Govt. Lot 4					
Roy C. & Edna E. Cole	20 E. 100' of W. 250' of E. 420' of Govt. Lot 3 lying between N. 1/4 Sec. 26 & Portage Lake					



According to information from H.W. Jensen, realtor - Total acreage of Govt Lot 3, Sec 26-141-31 is 33.75 acres.

Ownerships checked 9/26/62

SOLD FOR TAXES	VALUATIONS BY SCHOOL DISTRICTS AS EQUALIZED BY DEPARTMENT OF TAXATION						Tax Including State Homestead	State Tax on Non-Homestead	SPECIAL TAXES	SPECIAL TAXES	TOTAL TAXES	PAID	WHEN PAID	Number of Receipt	March Settlement 1964	June Settlement 1964	Penalty	November Settlement 1964	Penalty	Collections to First Monday in January 1965	Penalty	Delinquent on First Monday in January 1965	Total Delinquent Tax and Penalty	REMARKS	
	District No.	District No.	District No.	District No.	District No.	District No.																			
1	119	119	119	119	119	119	2936	112			3048	2nd HALF PAID OCT 3 1 1964	20769										17693	13465	
2												1st HALF PAID MAY 2 7 1964	11950		1524		1534							17693	
3							3146	120			3266	Balance Paid OCT 3 1 1964	20769											13465	
4												Part Paid MAY 2 7 1964	11950		1710		1556								
5																									
6							2424	92			2516	Balance Paid OCT 3 0 1964	20091											17685	13434
7							2424	92			2516	Balance Paid OCT 3 0 1964	10237		500		4532								
8												Part Paid MAY 2 8 1964													
9																									
10							490				490	PAID IN FULL FEB 5 1964	517	490										13286	
11																									
12																									
13																									
14																									
15							8956				8956	2nd HALF PAID SEP 2 8 1964	1798											17696	13466
16							234	08			242	1st HALF PAID MAY 2 0 1964	1044		4478		4478								13440
17												PAID IN FULL APR 2 1 1964	1236		242										
18							2322	80			2402	2nd HALF PAID OCT 3 0 1964	20729											17695	13337
19												1st HALF PAID MAY 2 9 1964	13302		1201		1201								
20							7786	298			8084	2nd HALF PAID OCT 3 0 1964	20207											17694	13468
							334					1st HALF PAID MAY 2 0 1964	11455		4042		4042								
							813								490	13397		17333							
							834																		

(Cont. next page)

25948

14-31 Real Estate
 14-31
 Sun-Isle Beach SHINGOBE ISLAND CHIPPWA POINT
 SUN-Isle BEACH SHINGOBE ISLAND CHIPPWA POINT
 SUN-Isle BEACH SHINGOBE ISLAND CHIPPWA POINT
 SUN-Isle BEACH SHINGOBE ISLAND CHIPPWA POINT

Assessment Roll and Tax List of Real Property in the town of Stingobee

* Indicate Type of Property: R-Residential, C-Commercial, I-Industrial, U-Utility, F-Farm, L-Lakeshore, T-Timber, M-Mineral

Form 50 MILLER-DAVIS CO., MINNEAPOLIS

IN WHOSE NAME ASSESSED	DESCRIPTION OF PROPERTY				No. School District	Indicate Homestead Yes or No	Agt. or Sea Recr. Yes or No	* Indicate Type of Property	TRUE AND FULL VALUATIONS				ASSESSED VALUATIONS							FINAL EQUALIZED VALUE				
	SUBDIVISION	Sec. or Lot	Town or Block	Rng.					Number of Acres of Land	LAND Exclusive of Structures and Improvements	BUILDINGS and Other Structures	MACHINERY Permanently Attached to Real Estate	TOTAL True and Full Value	RURAL			ALL OTHER				MACHINERY Permanently Attached to Real Estate	Seasonal and Recreational Cabins	TOTAL ASSESSED VALUE	Total Assessed Value as Equalized by the Board of Review
														Acres 100ths	Homestead Up to \$4,000 20%	Over \$4,000 and Non-Homestead 33 1/3%	Timber Land Class 3e 20%	Homestead Up to \$4,000 25%	Over \$4,000 and Non-Homestead 40%					
U. S. of America	1	NEWLINE			2714131																			
U. S. of America	2	NW 1/4 of NE 1/4																						
U. S. of America	3	SW 1/4 of NE 1/4																						
U. S. of America	4	SE 1/4 of NE 1/4																						
U. S. of America	5																							
U. S. of America	6	Govt. Lot 1																						
U. S. of America	7	" " 2																						
Jone J. Jure	8	SW 1/4 of NW 1/4 less part W. 1/2 N 1/4			40																			
U. S. of America	9	SE 1/4 of NW 1/4																						
Floyd Dorman	10	all 1/2 SW 1/4 of NW 1/4 lying W 1/2 N 1/4																						
U. S. of America	11	NE 1/4 of SW 1/4																						
Ernest A. + Elva Laura Collins	12	NW 1/4 of SW 1/4			40																			
U. S. of America	13	SW 1/4 of SW 1/4																						
U. S. of America	14	SE 1/4 of SW 1/4																						
U. S. of America	15																							
U. S. of America	16	NE 1/4 of SE 1/4																						
George Even	17	NW 1/4 of SE 1/4			40																			
" "	18	SW 1/4 of SE 1/4			40																			
" "	19	SE 1/4 of SE 1/4			40																			
	20				200																			

Cass County, Minnesota, for Taxes for the Year 1963.

SOLD FOR TAXES	VALUATIONS BY SCHOOL DISTRICTS AS EQUALIZED BY DEPARTMENT OF TAXATION						Tax Including State Homestead	State Tax on Non-Homestead	SPECIAL TAXES	SPECIAL TAXES	TOTAL TAXES	PAID	WHEN PAID	Number of Receipt	March Settlement 1964	June Settlement 1964	Penalty	November Settlement 1964	Penalty	Collections to First Monday in January 1965	Penalty	Delinquent on First Monday in January 1965	Total Delinquent Tax and Penalty	REMARKS
	District No.	District No.	District No.	District No.	District No.	District No.																		
	Rate	Rate	Rate	Rate	Rate	Rate																		
1																								
2																								
3																								
4																								
5																								
6																								
7																								
8	SOLD FOR TAXES						258		6014	230	6244										6244		Last year st not pd	
9																								
10							25		582	22	604	PAID IN FULL	MAY 4 1964	8967		604								13469
11																								
12	SOLD FOR TAXES						4111		2588		2588										2588		Last year st not pd	
13																								
14																								
15																								
16																								
17									1562	60	1622												17697	13470
18									1562	60	1622												"	"
19									1562	60	1622												"	"
20																								
							4111 484 595		13870	432	14302													

14-31 Real Estate 14-31 Sunrise Beach SHINGOBEE ISLAND CHIPPEWA POINT ENA SPRINGS CUTWAAY NW'S POINT

Assessment Roll and Tax List of Real Property in the Town of Sturgeon of Sturgeon,
* Indicate Type of Property: R-Residential, C-Commercial, I-Industrial, U-Utility, F-Farm, L-Lakeshore, T-Timber, M-Mineral

Cass County, Minnesota, for Taxes for the Year 1963.

Table with multiple columns: IN WHOSE NAME ASSESSED, DESCRIPTION OF PROPERTY (Subdivision, Acres), TRUE AND FULL VALUATIONS (LAND, BUILDINGS, MACHINERY, TOTAL), ASSESSED VALUATIONS (RURAL, ALL OTHER), VALUATIONS BY SCHOOL DISTRICTS AS EQUALIZED BY DEPARTMENT OF TAXATION (District No., Rate, Mills), TAX (Including State Homestead, State Tax on Non-Homestead, SPECIAL TAXES, TOTAL TAXES), PAID, WHEN PAID (Month, Day, Year), Number of Receipt, Settlement (March, June, November), Collections to First Monday in January (1965, 1966), Delinquent on First Monday in January (1965), Total Delinquent Tax and Penalty, REMARKS.

Form 50 MILLER-DAVIS CO., MINNEAPOLIS

IN WHOSE NAME ASSESSED

DESCRIPTION OF PROPERTY

TRUE AND FULL VALUATIONS

ASSESSED VALUATIONS

VALUATIONS BY SCHOOL DISTRICTS AS EQUALIZED BY DEPARTMENT OF TAXATION

Tax Including State Homestead

State Tax on Non-Homestead

SPECIAL TAXES

SPECIAL TAXES

TOTAL TAXES

PAID

WHEN PAID

Number of Receipt

Settlement 1964

Settlement 1964

Penalty 1964

Collections to First Monday in January 1965

Penalty 1965

Delinquent on First Monday in January 1965

Total Delinquent Tax and Penalty

REMARKS

Assessment Roll and Tax List of Real Property in the County of Stinger

Cass County, Minnesota, for Taxes for the Year 1963.

* Indicate Type of Property: R-Residential, C-Commercial, I-Industrial, U-Utility, F-Farm, L-Lakeshore, T-Timber, M-Mineral

Form 50 MILLER-DAVIS CO., MINNEAPOLIS

Table with multiple columns: IN WHOSE NAME ASSESSED, DESCRIPTION OF PROPERTY, TRUE AND FULL VALUATIONS, ASSESSED VALUATIONS, TAXES, PAID, WHEN PAID, and REMARKS. Rows list property owners like U.S. of America, Vernon J. + Neva M. Charist, and others with their respective land descriptions and tax details.

(Cont next page)

Vertical text on the right edge of the page: Real Estate, Stinger, Cass County, Minnesota, etc.

Assessment Roll and Tax List of Real Property in the Town of Shingoke

* Indicate Type of Property: R-Residential, C-Commercial, I-Industrial, U-Utility, F-Farm, L-Lakeshore, T-Timber, M-Mineral

Form 50 MILLER-DAVIS CO., MINNEAPOLIS

Table with columns: IN WHOSE NAME ASSESSED, DESCRIPTION OF PROPERTY, TRUE AND FULL VALUATIONS, ASSESSED VALUATIONS, and FINAL EQUALIZED VALUE.

Cass County, Minnesota, for Taxes for the Year 1963.

Table with columns: VALUATIONS BY SCHOOL DISTRICTS AS EQUALIZED BY DEPARTMENT OF TAXATION, Tax including State Homestead, SPECIAL TAXES, TOTAL TAXES, PAID, WHEN PAID, Number of Receipt, March Settlement, June Settlement, November Settlement, Collections to First Monday in January, Delinquent on First Monday in January, Total Delinquent Tax and Penalty, REMARKS.

14-31 Real Estate

14-31

SHINGOKE ISLAND CHIPPEWA POINT BOVA SPRINGS

Assessment Roll and Tax List of Real Property in the Town of Stingobee

Cass County, Minnesota, for Taxes for the Year 1963.

Form 50 MILLER-DAVIS CO., MINNEAPOLIS * Indicate Type of Property: R-Residential, C-Commercial, I-Industrial, U-Utility, F-Farm, L-Lakeshore, T-Timber, M-Mineral

Table with columns: IN WHOSE NAME ASSESSED, DESCRIPTION OF PROPERTY, TRUE AND FULL VALUATIONS, ASSESSED VALUATIONS (RURAL, ALL OTHER), FINAL EQUALIZED VALUE.

Table with columns: VALUATIONS BY SCHOOL DISTRICTS AS EQUALIZED BY DEPARTMENT OF TAXATION, Tax including State Homestead, State Tax on Non-Homestead, SPECIAL TAXES, TOTAL TAXES, PAID, WHEN PAID, Number of Receipt, March Settlement, June Settlement, November Settlement, Collections to First Monday in January, Delinquent on First Monday in January, Total Delinquent Tax and Penalty, REMARKS.

14-31 Real Estate

14-31 St. Louis Beach, STINGOBBEE ISLAND, CHIPPEWA POINT, MINNAPRINGS, CHIPPWA, MINNAPRINGS

Assessment Roll and Tax List of Real Property in the Town of Skingone

Cass County, Minnesota, for Taxes for the Year 1963.

Form 50 MILLER-DAVIS CO., MINNEAPOLIS

* Indicate Type of Property: R-Residential, C-Commercial, I-Industrial, U-Utility, F-Farm, L-Lakeshore, T-Timber, M-Mineral

Table with columns: IN WHOSE NAME ASSESSED, DESCRIPTION OF PROPERTY, TRUE AND FULL VALUATIONS, ASSESSED VALUATIONS, VALUATIONS BY SCHOOL DISTRICTS AS EQUALIZED BY DEPARTMENT OF TAXATION, TAXES, PAID, WHEN PAID, etc.

14-31 Real Estate

14-31 Real Estate, PAID IN FULL MAY 19 1964, PAID IN FULL MAY 19 1964

Assessment Roll and Tax List of Real Property in the Town of Skingabe

Cass County, Minnesota, for Taxes for the Year 1963.

Form 50 MILLER-DAVIS CO., MINNEAPOLIS

* Indicate Type of Property: R-Residential, C-Commercial, I-Industrial, U-Utility, F-Farm, L-Lakeshore, T-Timber, M-Mineral

Main assessment table with columns for property description, valuations, taxes, and payment status. Includes entries for Carl & Pauline Sagenstos, Earl V. & S. Pauline Sagenstos, and John E. & Alma F. Sreev.

Real Estate

Vertical text on the right edge of the page: REAL ESTATE, CHIPPWA POINT, SPRINGS, ISLAND, BEACH, SUMMIT

Assessment Roll and Tax List of

* Indicate Type of Property: R-Residential, C-Commercial, F-Industrial, U-Utility, F-Farm, L-Lakeshore, T-Timber, M-Mineral

Form 50 - MILLER-BAYNE CO., MINNEAPOLIS

IN WHOSE NAME ASSESSED	DESCRIPTION OF PROPERTY				No. School District	Indicate Home-Stead Yes or No	Agricultural Use Yes or No	Type of Property	TRUE AND FULL VALUATIONS				ASSESSED VALUATIONS					TOTAL ASSESSED VALUE	Final Equalized Value	SOLD FOR TAXES		
	SUBDIVISION	Sec. or Lot	Town or Block	Rng.					Number of Acres of Land	LAND Exclusive of Structures and Improvements	BUILDINGS and Other Structures	MACHINERY Permanently Attached to Real Estate	TOTAL True and Full Value	RURAL			MACHINERY Permanently Attached to Real Estate				Seasonal and Recreational Cabins	TOTAL ASSESSED VALUE
														Homestead Up to \$4,000	Over \$4,000 and Non-Homestead 33 1/3%	Timber Land Class 3e 20%						
Henry Rose	NEW 01 NE 1/4	34	14	31	54.90	119	no	R										1				
"	NW 1/4 of NE 1/4				52.21	70	no	R										2				
Peter N. Schmitz	SW 1/4 of NE 1/4				52.09	70	no	R										3				
Henry Rose	1/2 of Sect. Lot 1 less 1/2				15.81	70	no	R										4				
Peter N. Schmitz	W 1/2 of " "				19.50	70	no	R										5				
U. S. of America	NE 1/4 of NW 1/4																	6				
U. S. of America	NW 1/4 of NW 1/4																	7				
U. S. of America	SW 1/4 of NW 1/4																	8				
U. S. of America	SE 1/4 of NW 1/4																	9				
Henry Rose	com. 225' x 1/2 sec. 14, 15, 16, 17, 18, 19, 20, 21, 22, 23, 24, 25, 26, 27, 28, 29, 30, 31, 32, 33, 34, 35, 36, 37, 38, 39, 40, 41, 42, 43, 44, 45, 46, 47, 48, 49, 50, 51, 52, 53, 54, 55, 56, 57, 58, 59, 60, 61, 62, 63, 64, 65, 66, 67, 68, 69, 70, 71, 72, 73, 74, 75, 76, 77, 78, 79, 80, 81, 82, 83, 84, 85, 86, 87, 88, 89, 90, 91, 92, 93, 94, 95, 96, 97, 98, 99, 100				1	70	no	R										10				
U. S. of America	NE 1/4 of SW 1/4																	11				
U. S. of America	NW 1/4 of SW 1/4																	12				
U. S. of America	SW 1/4 of SW 1/4																	13				
U. S. of America	SE 1/4 of SW 1/4																	14				
Jydia C. Co. & Co.	7.300' of Sect. Lot 2				13.44	70	no	R										15				
R. W. Reese	2.300' of n. 1/2 of Sect. Lot 2				13.44	70	no	R										16				
C. Petrus Peterson	7.470' of S 1/2 of " "				15.44	70	no	R										17				
Adam S. King	SW 1/4 of SE 1/4 of Sect. Lot 4				41.54	70	no	R										18				
Thelma B. Finley	Lot 3, called "Chariton Beach"				30	70	no	R										19				
	Part of SW 1/4 of SE 1/4				30	70	no	R										20				

(Cont. next page)

Cass County, Minnesota, for Taxes for the Year 1963.

VALUATIONS BY SCHOOL DISTRICTS AS EQUALIZED BY DEPARTMENT OF TAXATION	SPECIAL TAXES	SPECIAL TAXES	TOTAL TAXES	PAID	WHEN PAID	Number of Receipt	March Settlement 1964	June Settlement 1964	November Settlement 1964	Penalty	Collections to First Monday in January 1965	Penalty	Delinquent on First Monday in January 1965	Total Delinquent Tax and Penalty	REMARKS								
																District No.	District No.	District No.	District No.	District No.	District No.	District No.	District No.
																Rate	Rate	Rate	Rate	Rate	Rate	Rate	Rate
90			20.98	80	21.78	1									13490								
86			20.04	76	20.80	2									"								
224			52.22	2.00	54.22	3									13491								
		150	38.72	1.34	40.06	4									13493								
373			86.94	3.32	90.26	5									13491								
						6																	
						7																	
						8																	
						9																	
						10									13490								
						11																	
						12																	
						13																	
						14																	
1020			237.76	9.10	246.86	15									13492								
756			176.22	6.74	182.96	16									13493								
1016			236.82	9.66	245.88	17									13494								
534			124.48	4.76	129.24	18									13495								
						19																	
50			11.66	4.4	12.10	20									13681								
4149		251-4400	907.12	31.22	1071.12																		
			64.78																				
			165.90																				

Real Estate, Sun-Isle Beach, Shiloh, Island, Carpina Point, Sun Springs, etc.

Assessment Roll and Tax List of Real Property in the Town of Stingobee

Cass County, Minnesota, for Taxes for the Year 1963.

Form 50 MILLER-DAVIS CO., MINNEAPOLIS

* Indicate Type of Property: R-Residential, C-Commercial, I-Industrial, U-Utility, F-Farm, L-Lakeshore, T-Timber, M-Mineral

Table with columns: IN WHOSE NAME ASSESSED, DESCRIPTION OF PROPERTY, TRUE AND FULL VALUATIONS, ASSESSED VALUATIONS, VALUATIONS BY SCHOOL DISTRICTS AS EQUALIZED BY DEPARTMENT OF TAXATION, TAX INCLUDING STATE HOMESTEAD, SPECIAL TAXES, TOTAL TAXES, PAID, WHEN PAID, Number of Receipt, March Settlement, June Settlement, Penalty, November Settlement, Collections to First Monday in January 1965, Delinquent on First Monday in January 1965, Total Delinquent Tax and Penalty, REMARKS.

IN WHOSE NAME ASSESSED

DESCRIPTION OF PROPERTY

TRUE AND FULL VALUATIONS

ASSESSED VALUATIONS

VALUATIONS BY SCHOOL DISTRICTS AS EQUALIZED BY DEPARTMENT OF TAXATION

Tax Including State Homestead

State Tax on Non-Homestead

SPECIAL TAXES

SPECIAL TAXES

TOTAL TAXES

PAID

WHEN PAID

Number of Receipt

March Settlement

June Settlement

Penalty

November Settlement

Penalty

Collections to First Monday in January 1965

Penalty

Delinquent on First Monday in January 1965

Penalty

Total Delinquent Tax and Penalty

REMARKS

Theodore + Helen S. Kolderie

Ronald E. Nordlund

Theodore + Helen S. Kolderie

Bruce W. + Stanley H. Taylor

142-31 Sunrise Beach STINGOBBE ISLAND CHIPPEWA POINT WONA SPIRITS DUNELAY W-S POINT

Assessment Roll and Tax List of Real Property in the Town of Stingobee

* Indicate Type of Property: R-Residential, C-Commercial, I-Industrial, U-Utility, F-Farm, L-Lakeshore, T-Timber, M-Mineral

Form 5C MILLER-DAVIS CO., MINNEAPOLIS

Table with columns: IN WHOSE NAME ASSESSED, DESCRIPTION OF PROPERTY, TRUE AND FULL VALUATIONS, ASSESSED VALUATIONS, FINAL EQUALIZED VALUE.

Cass County, Minnesota, for Taxes for the Year 1963.

Table with columns: VALUATIONS BY SCHOOL DISTRICTS AS EQUALIZED BY DEPARTMENT OF TAXATION, Tax including State Homestead, State Tax on Non-Homestead, SPECIAL TAXES, TOTAL TAXES, PAID, WHEN PAID, Number of Receipt, March Settlement 1964, June Settlement 1964, November Settlement 1964, Collections to First Monday in January 1965, Delinquent on First Monday in January 1965, Total Delinquent Tax and Penalty, REMARKS.

14-31 Real Estate

PAID'S FIRST ADD'N TO STINGOBE BEACH STINGOBE ISLAND CHIPPWA POINT MINN SPRINGS DUTWAY

Assessment Roll and Tax List of Real Property in the Town of Stingobee

* Indicate Type of Property: R-Residential, C-Commercial, I-Industrial, U-Utility, F-Farm, L-Lakeshore, T-Timber, M-Mineral

Form 50 MILLER-DAVIS CO., MINNEAPOLIS

Table with columns: IN WHOSE NAME ASSESSED, DESCRIPTION OF PROPERTY, TRUE AND FULL VALUATIONS, ASSESSED VALUATIONS, FINAL EQUALIZED VALUE. Includes entries for Wayne A. Lowry, Emily Johnston, Ray V. Bailey, R. J. + Dorothy B. Ross, etc.

Cass County, Minnesota, for Taxes for the Year 1963.

Table with columns: VALUATIONS BY SCHOOL DISTRICTS AS EQUALIZED BY DEPARTMENT OF TAXATION, Tax including State Homestead, State Tax on Non-Homestead, SPECIAL TAXES, TOTAL TAXES, PAID, WHEN PAID, Number of Receipt, March Settlement, June Settlement, November Settlement, Collections to First Monday in January 1965, Delinquent on First Monday in January 1965, Total Delinquent Tax and Penalty, REMARKS. Includes entries for 1963 tax payments and delinquencies.

14-31 Real Estate

14-31 Real Estate

Assessment Roll and Tax List of Real Property in the Town of Stingobee

* Indicate Type of Property: R-Residential, C-Commercial, I-Industrial, U-Utility, F-Farm, L-Lakeshore, T-Timber, M-Mineral

Form 5C MILLER-DAVIS CO., MINNEAPOLIS

IN WHOSE NAME ASSESSED	DESCRIPTION OF PROPERTY			TRUE AND FULL VALUATIONS										FINAL EQUALIZED VALUE	REMARKS		
	SUBDIVISION	Sec. or Lot	Town or Block	Number of Acres of Land	ASSESSED VALUATIONS												
					RURAL					ALL OTHER							
					Land	Buildings	Machinery	Total	Homestead	Over \$4,000	Timber	Homestead	Over \$4,000			Machinery	Seasonal and
100ths	Dollars	Dollars	Dollars	Dollars	20%	33 1/2%	20%	25%	40%	33 1/2%	33 1/2%	Dollars	Dollars	Dollars			
				2	117												
Ethel Peterson	Govt Lot 5			50.75													
A. Lee Miller	Govt Lot 2			29.50													

Cass County, Minnesota, for Taxes for the Year 1963.

SOLD FOR TAXES	VALUATIONS BY SCHOOL DISTRICTS AS EQUALIZED BY DEPARTMENT OF TAXATION						Tax Including State Homestead	State Tax on Non-Homestead	SPECIAL TAXES	SPECIAL TAXES	TOTAL TAXES	PAID	WHEN PAID	Number of Receipt	March Settlement 1964	June Settlement 1964	Penalty	November Settlement 1964	Penalty	Collections to First Monday in January 1965	Penalty	Delinquent on First Monday in January 1965	Total Delinquent Tax and Penalty	REMARKS
	District No.	District No.	District No.	District No.	District No.	District No.																		
	Rate	Rate	Rate	Rate	Rate	Rate																		
	Dollars	Dollars	Dollars	Dollars	Dollars	Dollars																		

SUNDAY BEACH STINGOBBE ISLAND CHIPPEWA POINT BONA SPRINGS DAYWAY

Assessment Roll and Tax List of Real Property in the Town of Stingoka

* Indicate Type of Property: R-Residential, C-Commercial, I-Industrial, U-Utility, F-Farm, L-Lakeshore, T-Timber, M-Mineral

IN WHOSE NAME ASSESSED	DESCRIPTION OF PROPERTY			No. School District	Indicate Home-stead Yes or No	Agri. or Semi-Rec. Yes or No	Indicate Type of Property	TRUE AND FULL VALUATIONS							ASSESSED VALUATIONS							FINAL EQUALIZED VALUE
	SUBDIVISION	Sec. or Lot	Town or Block					Number of Acres of Land	LAND Exclusive of Structures and Improvements	BUILDINGS and Other Structures	MACHINERY Permanently Attached to Real Estate	TOTAL True and Full Value	RURAL		ALL OTHER			MACHINERY Permanently Attached to Real Estate	Seasonal and Recreational Cabins	TOTAL ASSESSED VALUE	Total Assessed Value as Equalized by the Board of Review	
													Homestead Up to \$4,000 20%	Over \$4,000 and Non-Homestead 33 1/3%	Timber Land Class 3e 20%	Homestead Up to \$4,000 25%	Over \$4,000 and Non-Homestead 40%					
Ethel Peterson																						

SOLD FOR TAXES	VALUATIONS BY SCHOOL DISTRICTS AS EQUALIZED BY DEPARTMENT OF TAXATION						Tax including State Homestead	State Tax on Non-Homestead	SPECIAL TAXES	SPECIAL TAXES	TOTAL TAXES	PAID	WHEN PAID	Number of Receipt	March Settlement 1964	June Settlement 1964	Penalty	November Settlement 1964	Penalty	Collections to First Monday in January 1965	Penalty	Delinquent on First Monday in January 1965	Total Delinquent Tax and Penalty	REMARKS																
	District No.	District No.	District No.	District No.	District No.	District No.																			Dollars	Dollars	Dollars	Dollars	Dollars	Dollars	Dollars	Dollars	Dollars	Dollars	Dollars	Dollars	Dollars	Dollars	Dollars	Dollars
	Rate	Rate	Rate	Rate	Rate	Rate																			Mills	Mills	Mills	Mills	Mills	Mills	Mills	Mills	Mills	Mills	Mills	Mills	Mills	Mills	Mills	Mills

141-31 Real Estate 142-31 ELLIOTT'S FIRST ADDN TO CHICAGO CODE BEACH Sunrise Beach SHINGOBER ISLAND CHIPPWA POINT SUN SPRINGS CUTBANK JIM'S POINT

Assessment Roll and Tax List of Real Property in the Town of Shingobe

* Indicate Type of Property: R-Residential, C-Commercial, I-Industrial, U-Utility, F-Farm, L-Lakeshore, T-Timber, M-Mineral

Form 5C MILLER-DAVIS CO., MINNEAPOLIS

IN WHOSE NAME ASSESSED	DESCRIPTION OF PROPERTY			No. School District	Indicate Homestead Yes or No	Agri. or Seas. Rec. Yes or No	Indicate Type of Property	TRUE AND FULL VALUATIONS				ASSESSED VALUATIONS							FINAL EQUALIZED VALUE	
	SUBDIVISION	Sec. or Lot	Town or Block					Number of Acres of Land	LAND Exclusive of Structures and Improvements	BUILDINGS and Other Structures	MACHINERY Permanently Attached to Real Estate	TOTAL True and Full Value	RURAL			ALL OTHER				
													Acres	100ths	Homestead Up to \$4,000 20%	Over \$4,000 and Non-Homestead 33 1/3%	Timber Land Class 2e 20%	Homestead Up to \$4,000 25%		Over \$4,000 and Non-Homestead 40%
								Dollars	Dollars	Dollars	Dollars	Dollars	Dollars	Dollars	Dollars	Dollars	Dollars	Dollars		
State of Minnesota																				
State of Minnesota																				
U. S. of America																				
U. S. of America																				

Cass County, Minnesota, for Taxes for the Year 1963.

SOLD FOR TAXES	VALUATIONS BY SCHOOL DISTRICTS AS EQUALIZED BY DEPARTMENT OF TAXATION						Tax Including State Homestead	State Tax on Non-Homestead	SPECIAL TAXES	SPECIAL TAXES	TOTAL TAXES	PAID	WHEN PAID	Number of Receipt	March Settlement 1964	June Settlement 1964	Penalty 1964	November Settlement 1964	Penalty 1964	Collections to First Monday in January 1965	Penalty 1965	Delinquent on First Monday in January 1965	Total Delinquent Tax and Penalty	REMARKS
	District No.	District No.	District No.	District No.	District No.	District No.																		
	Rate	Rate	Rate	Rate	Rate	Rate																		

141-31 Real Estate 142-31

MAIL'S FIRST ADD'N NO. CANTONER GIBBER BEACH SUNRISE BEACH SHINGOBE ISLAND CHIPPEWA POINT ONA SPRINGS OUTWAY

Assessment Roll and Tax List of Real Property in the Town of Spring Lake

Form 50 MILLER-DAVIS CO., MINNEAPOLIS

* Indicate Type of Property: R-Residential, C-Commercial, I-Industrial, U-Utility, F-Farm, L-Lakeshore, T-Timber, M-Mineral

Table with columns: IN WHOSE NAME ASSESSED, DESCRIPTION OF PROPERTY, TRUE AND FULL VALUATIONS, ASSESSED VALUATIONS, VALUATIONS BY SCHOOL DISTRICTS AS EQUALIZED BY DEPARTMENT OF TAXATION, TAX INCLUDING STATE HOMESTEAD, State Tax on Non-Homestead, SPECIAL TAXES, SPECIAL TAXES, TOTAL TAXES, PAID, WHEN PAID, Number of Receipt, March Settlement 1964, June Settlement 1964, Penalty, November Settlement 1964, Penalty, Collections to First Monday in January 1965, Penalty, Delinquent on First Monday in January 1965, Total Delinquent Tax and Penalty, REMARKS.

14-31 Real Estate 142-31

SHORELINE ISLAND CHIPPWA POINT ONA SPRINGS QUINCY

Assessment Roll and Tax List of Real Property in the Town of Stingobee,

Cass County, Minnesota, for Taxes for the Year 1963.

* Indicate Type of Property: R-Residential, C-Commercial, I-Industrial, U-Utility, F-Farm, L-Lakeshore, T-Timber, M-Mineral

Form 5C - MILLER-DAVIS CO., MINNEAPOLIS

Table with 31 columns including: IN WHOSE NAME ASSESSED, DESCRIPTION OF PROPERTY, TRUE AND FULL VALUATIONS, ASSESSED VALUATIONS, VALUATIONS BY SCHOOL DISTRICTS AS EQUALIZED BY DEPARTMENT OF TAXATION, SOLD FOR TAXES, PAID, WHEN PAID, Number of Receipt, March Settlement 1964, June Settlement 1964, November Settlement 1964, Collections to First Monday in January 1965, Delinquent on First Monday in January 1965, Total Delinquent Tax and Penalty, REMARKS.

Charles C. + Agnes C. Armstrong

Everett + Violet Davis

Arthur W. Helmick

Louie Rude

Alvin Blaine

Lloyd Bethel, jr

Palmer A. Ulland

Grant S. Bethel

State of Minnesota

2252

PAID'S FIRST ADD'N TO CHIPPWA POINT
CHIPPWA POINT
SUN LISA BAROH
SHINOBOE ISLAND
CHIPPWA POINT
ORLA SPRINGS
ALTERNATE

Assessment Roll and Tax List of Real Property in the Town of Shingobee, Cass County, Minnesota, for Taxes for the Year 1963.

Form 50 MILLER-DAVIS CO., MINNEAPOLIS

* Indicate Type of Property: R-Residential, C-Commercial, I-Industrial, U-Utility, F-Farm, L-Lakeshore, T-Timber, M-Mineral

Main table with columns: IN WHOSE NAME ASSESSED, DESCRIPTION OF PROPERTY, TRUE AND FULL VALUATIONS, ASSESSED VALUATIONS, VALUATIONS BY SCHOOL DISTRICTS AS EQUALIZED BY DEPARTMENT OF TAXATION, TAX INCLUDING STATE HOMESTEAD, SPECIAL TAXES, TOTAL TAXES, PAID, WHEN PAID, Number of Receipt, March Settlement 1964, June Settlement 1964, November Settlement 1964, Collections to First Monday in January 1965, Delinquent on First Monday in January 1965, Total Delinquent Tax and Penalty, REMARKS.

(Cont next page)

Vertical text on the right edge of the page: REAL ESTATE, SHINGOBEE ISLAND, CHIPPEWA POINT, DNA SPRINGS, COUNTRY

Assessment Roll and Tax List of Real Property in the Town of Shingobe

* Indicate Type of Property: R-Residential, C-Commercial, I-Industrial, U-Utility, F-Farm, L-Lakeshore, T-Timber, M-Mineral

Form 50 MILLER-DAVIS CO., MINNEAPOLIS

Main table with columns: IN WHOSE NAME ASSESSED, DESCRIPTION OF PROPERTY, TRUE AND FULL VALUATIONS, ASSESSED VALUATIONS, VALUATIONS BY SCHOOL DISTRICTS AS EQUALIZED BY DEPARTMENT OF TAXATION, Tax including State Homestead, State Tax on Non-Homestead, SPECIAL TAXES, TOTAL TAXES, PAID, WHEN PAID, Number of Receipt, March Settlement 1964, June Settlement 1964, November Settlement 1964, Collections to First Monday in January 1965, Delinquent on First Monday in January 1965, Total Delinquent Tax and Penalty, REMARKS.

(Cont on next page)

121 86

Handwritten summary totals at the bottom of the table.

Vertical text on the right edge of the page, including 'SHINGOBE ISLAND' and other location names.

Assessment Roll and Tax List of Real Property in the Town of Springdale

* Indicate Type of Property: R-Residential, C-Commercial, I-Industrial, U-Utility, F-Farm, L-Lakeshore, T-Timber, M-Mineral

Form 50 MILLER-DAVIS CO., MINNEAPOLIS

IN WHOSE NAME ASSESSED	DESCRIPTION OF PROPERTY				No. School District	Indicate Homestead Yes or No	Agri. or Recr. Yes or No	Indicate Type of Property	TRUE AND FULL VALUATIONS				ASSESSED VALUATIONS							FINAL EQUALIZED VALUE	
	SUBDIVISION	Sec. or Lot	Town or Block	Number of Acres of Land					LAND Exclusive of Structures and Improvements	BUILDINGS and Other Structures	MACHINERY Permanently Attached to Real Estate	TOTAL True and Full Value	RURAL		ALL OTHER		MACHINERY Permanently Attached to Real Estate	Seasonal and Recreational Cabins	TOTAL ASSESSED VALUE		Total Assessed Value as Equalized by the Board of Review
													Homestead Up to \$4,000 20%	Over \$4,000 and Non-Homestead 33 1/3%	Timber Land Class 3e 20%	Homestead Up to \$4,000 25%					
State of Minnesota				8 142.31	119																
Minnie Agno + Rose Ann De Dolorio	in "White" on Resurvey Plat Lot 2			8 92		no	no	I													
"	in "White" on Resurvey Plat Lot 3			1 60		no	no	J													
James R. + Clara M. Gear	Lot 5 N. of Ry. less W. 20' or part Lot 4 in "White" on Resurvey Plat			6 73		yes	no	R													
State of Minnesota	1.56 ac. of SE 1/4 75E 1/4 S. 9 R. 4 or Lot 5 in "White" on Resurvey Plat			1 56																	

18 81

Cass County, Minnesota, for Taxes for the Year 1963.

SOLD FOR TAXES	VALUATIONS BY SCHOOL DISTRICTS AS EQUALIZED BY DEPARTMENT OF TAXATION						Tax Including State Homestead	State Tax on Non-Homestead	SPECIAL TAXES	SPECIAL TAXES	TOTAL TAXES	PAID	WHEN PAID	Number of Receipt	March Settlement 1964	June Settlement 1964	Penalty	November Settlement 1964	Penalty	Collections to First Monday in January 1965	Penalty	Delinquent on First Monday in January 1965	Total Delinquent Tax and Penalty	REMARKS		
	District No.	District No.	District No.	District No.	District No.	District No.																				
	Rate	Rate	Rate	Rate	Rate	Rate																				
	Mills	Mills	Mills	Mills	Mills	Mills																				
1																										
2						20	516	18			534													534	19203	
3						7	180	06			186													186		
4						4 213	5498				5498		PAID IN FULL	FEB 17 1964	2096	5498									13545	
5																										
6																										
7																										
8																										
9																										
10																										
11																										
12																										
13																										
14																										
15																										
16																										
17																										
18																										
19																										
20																										

4 213 27 240

6194 24

6218

5498

720

141-31 Real Estate 142-31

FAULSTAD'S FIRST ADD'N NO 10 SHIMSHORE BEACH SHIMSHORE ISLAND CHIPPEWA POINT DNA SPRINGS DUNBAR

Assessment Roll and Tax List of Real Property in the Town of Sturgeon

* Indicate Type of Property: R-Residential, C-Commercial, I-Industrial, U-Utility, F-Farm, L-Lakeshore, T-Timber, M-Mineral

Form 50 MILLER-DAVIS CO., MINNEAPOLIS

Table with columns: IN WHOSE NAME ASSESSED, DESCRIPTION OF PROPERTY, TRUE AND FULL VALUATIONS (LAND, BUILDINGS, MACHINERY, TOTAL), ASSESSED VALUATIONS (RURAL, ALL OTHER, MACHINERY, Seasonal and Recreational Cabins, TOTAL ASSESSED VALUE), FINAL EQUALIZED VALUE.

Cass County, Minnesota, for Taxes for the Year 1963.

Table with columns: VALUATIONS BY SCHOOL DISTRICTS AS EQUALIZED BY DEPARTMENT OF TAXATION (District No., Rate, Mills), Tax including State Homestead, State Tax on Non-Homestead, SPECIAL TAXES, TOTAL TAXES, PAID, WHEN PAID, Number of Receipt, March Settlement, June Settlement, November Settlement, Collections to First Monday in January, Delinquent on First Monday in January, Total Delinquent Tax and Penalty, REMARKS.

Assessment Roll and Tax List of Real Property in the Town of Stingobee

Cass County, Minnesota, for Taxes for the Year 1963.

Form 5C - MILLER-DAVIS CO., MINNEAPOLIS

* Indicate Type of Property: R-Residential, C-Commercial, I-Industrial, U-Utility, F-Farm, L-Lakeshore, T-Timber, M-Mineral

Table with columns for Description of Property, True and Full Valuations, Assessed Valuations, Valuations by School Districts, and Taxes. Includes handwritten entries for Ethel L. Peterson and tax amounts.

141-31 Real Estate 142-31

Map labels: SHINGOBE BEACH, SHINGOBE ISLAND, CHIPPEWA POINT, IONA SPRINGS, CATERPILLAR

Assessment Roll and Tax List of Real Property in the Town of Kingsbee

* Indicate Type of Property: R-Residential, C-Commercial, I-Industrial, U-Utility, F-Farm, L-Lakeshore, T-Timber, M-Mineral

Form 5C MILLER-DAVIS CO., MINNEAPOLIS

Table with columns: IN WHOSE NAME ASSESSED, DESCRIPTION OF PROPERTY, TRUE AND FULL VALUATIONS, ASSESSED VALUATIONS, and FINAL EQUALIZED VALUE. Includes entries for State of Minnesota, Natalie C. Dean, Leonard Peterson, Ethel L. Peterson, State of Minnesota, and U. S. of America.

10513

Cass County, Minnesota, for Taxes for the Year 1963.

Table with columns: SOLD FOR TAXES, VALUATIONS BY SCHOOL DISTRICTS AS EQUALIZED BY DEPARTMENT OF TAXATION, Tax Including State Homestead, State Tax on Non-Homestead, SPECIAL TAXES, TOTAL TAXES, PAID, WHEN PAID, Number of Receipt, March Settlement, June Settlement, November Settlement, Collections to First Monday in January, Delinquent on First Monday in January, Total Delinquent Tax and Penalty, REMARKS. Includes entries for months 1 through 20.

1st DIST. ADM. TO... SHIRLISE BEACH SHINGOBE ISLAND CHIPPWA POINT OMA SPRINGS CUTWAAY

Assessment Roll and Tax List of Real Property in the Town of Springdale

* Indicate Type of Property: R-Residential, C-Commercial, I-Industrial, U-Utility, F-Farm, L-Lakeshore, T-Timber, M-Mineral

Form 50 MILLER-DAVIS CO., MINNEAPOLIS

Table with columns: IN WHOSE NAME ASSESSED, DESCRIPTION OF PROPERTY, TRUE AND FULL VALUATIONS, ASSESSED VALUATIONS, FINAL EQUALIZED VALUE. Includes entries for State of Minnesota, Little Giant, Inc., Wheeler S lumber Bridge + Supply Co., U. S. of America, and Herbert A. Noetzel.

Cass County, Minnesota, for Taxes for the Year 1963.

Table with columns: VALUATIONS BY SCHOOL DISTRICTS AS EQUALIZED BY DEPARTMENT OF TAXATION, Tax Including State Homestead, State Tax on Non-Homestead, SPECIAL TAXES, TOTAL TAXES, PAID, WHEN PAID, Number of Receipt, March Settlement 1964, June Settlement 1964, November Settlement 1964, Collections to First Monday in January 1965, Delinquent on First Monday in January 1965, Total Delinquent Tax and Penalty, REMARKS. Includes handwritten notes like 'PAID IN FULL MAY 5 1964' and 'PAID IN FULL MAY 15 1964'.

14-31 Real Estate 142-31

PAID'S FIRST ADDY TO CHIEF CLERK BEACH SHINGOBER ISLAND CHIPPWA POINT BINA SPRINGS OUBWAY PAID'S POINT

Assessment Roll and Tax List of Real Property in the Town of Springdale

* Indicate Type of Property: R-Residential, C-Commercial, I-Industrial, U-Utility, F-Farm, L-Lakeshore, T-Timber, M-Mineral

Form 5C MILLER-DAVIS CO., MINNEAPOLIS

Table with columns: IN WHOSE NAME ASSESSED, DESCRIPTION OF PROPERTY, TRUE AND FULL VALUATIONS, ASSESSED VALUATIONS, and FINAL EQUALIZED VALUE. Includes handwritten entry for U.S. of America.

Cass County, Minnesota, for Taxes for the Year 1963.

Table with columns: VALUATIONS BY SCHOOL DISTRICTS AS EQUALIZED BY DEPARTMENT OF TAXATION, Tax including State Homestead, State Tax on Non-Homestead, SPECIAL TAXES, TOTAL TAXES, PAID, WHEN PAID, Number of Receipt, and various settlement and penalty dates.

142-31 Real Estate

142-31 Real Estate

Assessment Roll and Tax List of Real Property in the Town of Shingolen

* Indicate Type of Property: R-Residential, C-Commercial, I-Industrial, U-Utility, F-Farm, L-Lakeshore, T-Timber, M-Mineral

Form 50 MILLER-DAVIS CO., MINNEAPOLIS

Table with columns: IN WHOSE NAME ASSESSED, DESCRIPTION OF PROPERTY, TRUE AND FULL VALUATIONS, ASSESSED VALUATIONS, FINAL EQUALIZED VALUE. Includes handwritten entries for 'Govt Lot 1' and 'Colbert L. + Jane Nye Andrus'.

Cass County, Minnesota, for Taxes for the Year 1963.

Table with columns: VALUATIONS BY SCHOOL DISTRICTS AS EQUALIZED BY DEPARTMENT OF TAXATION, TAX INCLUDING STATE HOMESTEAD, SPECIAL TAXES, TOTAL TAXES, PAID, WHEN PAID, Number of Receipt, March Settlement, June Settlement, November Settlement, Collections to First Monday in January, Delinquent on First Monday in January, Total Delinquent Tax and Penalty, REMARKS. Includes handwritten tax amounts and dates like 'OCT 27 1964'.

142-31 Real Estate

142-31 Real Estate SHINGOLEN ISLAND CHIPPEWA POINT BONA SPRINGS CUTWAU

Assessment Roll and Tax List of Real Property in the Town of Springdale
* Indicate Type of Property: R-Residential, C-Commercial, I-Industrial, U-Utility, F-Farm, L-Lakeshore, T-Timber, M-Mineral

Cass County, Minnesota, for Taxes for the Year 1963.

IN WHOSE NAME ASSESSED	DESCRIPTION OF PROPERTY					No. School District	Indicate Homestead Yes or No	Agricultural Use Yes or No	Indicate Type of Property	TRUE AND FULL VALUATIONS					ASSESSED VALUATIONS								FINAL EQUALIZED VALUE	SOLD FOR TAXES	VALUATIONS BY SCHOOL DISTRICTS AS EQUALIZED BY DEPARTMENT OF TAXATION					Tax Including State Homestead	State Tax on Non-Homestead	SPECIAL TAXES	SPECIAL TAXES	TOTAL TAXES	PAID	WHEN PAID	Number of Receipt	March Settlement 1964	June Settlement 1964	Penalty	November Settlement 1964	Penalty	Collections to First Monday in January 1965	Penalty	Delinquent on First Monday in January 1965	Total Delinquent Tax and Penalty	REMARKS
	SUBDIVISION	Sec. or Lot	Town or Block	Rng.	Number of Acres of Land					LAND Exclusive of Structures and Improvements	BUILDINGS and Other Structures	MACHINERY Permanently Attached to Real Estate	TOTAL True and Full Value	Homestead Up to \$4,000 20%	RURAL Over \$4,000 and Non-Homestead 33 1/3%	Timber Land Class 3e 20%	ALL OTHER Homestead Up to \$4,000 25%	Over \$4,000 and Non-Homestead 40%	MACHINERY Permanently Attached to Real Estate 33 1/3%	Seasonal and Recreational Cabins 33 1/3%	TOTAL ASSESSED VALUE	Total Assessed Value as Equalized by the Board of Review			District No. Rate Mills	District No. Rate Mills	District No. Rate Mills	District No. Rate Mills	District No. Rate Mills																		
Lessie K. + Irene M. Gardner		17	42	31	40	119	Yes	Yes	R									4	119								1															13718					
Laurence H. Thompson.					40		No	Yes	R																		2																13559				
Senevieve Greter + Inez M. Berg							No	Yes	R																		3																				
U. S. of America																												4																			
U. S. of America																												5																			
U. S. of America		9 1/2			20		No	Yes	R																		6																17728				
A.J. + Lydia Thompson							No	Yes	R																		7																				
U. S. of America																												8																			
U. S. of America																												9																			
U. S. of America																												10																			
U. S. of America																												11																			
U. S. of America																												12																			
U. S. of America																												13																			
U. S. of America																												14																			
U. S. of America																												15																			
State of Minnesota																												16																			
U. S. of America																												17																			
U. S. of America																												18																			
U. S. of America																												19																			
U. S. of America																												20																			
																												20																	13402		

142-31
Real Estate
JUN 5 1963
SUN 5 1963
CITYWAY
JUN 5 1963
SUN 5 1963
CITYWAY

Assessment Roll and Tax List of Real Property in the town of Spring Lake

* Indicate Type of Property: R-Residential, C-Commercial, I-Industrial, U-Utility, F-Farm, L-Lakeshore, T-Timber, M-Mineral

Form 5C MILLER-DAVIS CO., MINNEAPOLIS

Table with columns: IN WHOSE NAME ASSESSED, DESCRIPTION OF PROPERTY, TRUE AND FULL VALUATIONS, ASSESSED VALUATIONS, VALUATIONS BY SCHOOL DISTRICTS AS EQUALIZED BY DEPARTMENT OF TAXATION, TAX INCLUDING STATE HOMESTEAD, SPECIAL TAXES, TOTAL TAXES, PAID, WHEN PAID, Number of Receipt, March Settlement, June Settlement, November Settlement, Collections to First Monday in January, Delinquent on First Monday in January, Total Delinquent Tax and Penalty, REMARKS.

Robert + Helen Radolgh

U. S. of America, State of Minnesota, U. S. of America, U. S. of America, U. S. of America, U. S. of America, U. S. of America, U. S. of America, U. S. of America, U. S. of America, U. S. of America

NE 1/4 of NE 1/4, NW 1/4 of NE 1/4, SW 1/4 of NE 1/4, SE 1/4 of NE 1/4, NE 1/4 of NW 1/4, Govt Lot 1, Govt Lot 2, SE 1/4 of NW 1/4, NE 1/4 of SW 1/4, NW 1/4 of SE 1/4, SW 1/4 of SE 1/4, SE 1/4 of SE 1/4

160

250

5828 224

6052

6052

13209

"

"

"

"

"

"

"

"

"

"

"

"

"

"

"

"

"

"

"

SAID'S FIRST ADDY TO... SHIRLSE BEACH... SHINGOBER ISLAND... CHIPPWA POINT... BNA SPRINGS... CTRWAY... CHIP'S POINT

Assessment Roll and Tax List of Real Property in the Town of Springbee

* Indicate Type of Property: R-Residential, C-Commercial, I-Industrial, U-Utility, F-Farm, L-Lakeshore, T-Timber, M-Mineral

Cass County, Minnesota, for Taxes for the Year 1963.

Form 5C MILLER-DAVIS CO., MINNEAPOLIS

Table with columns for Description of Property, True and Full Valuations, Assessed Valuations, Final Equalized Value, Sold for Taxes, and Tax details. Includes handwritten entries for property owners like Edward S. + Clara Ristner, Elaine Dilly, and Claude B. + Lillian Starr.

Assessment Roll and Tax List of Real Property in the Town of Spring Lake of Spring Lake

* Indicate Type of Property: R-Residential, C-Commercial, I-Industrial, U-Utility, F-Farm, L-Lakeshore, T-Timber, M-Mineral

Form 50 - MILLER-DAVIS CO., MINNEAPOLIS

Table with columns: IN WHOSE NAME ASSESSED, DESCRIPTION OF PROPERTY, TRUE AND FULL VALUATIONS, ASSESSED VALUATIONS, FINAL EQUALIZED VALUE.

Cass County, Minnesota, for Taxes for the Year 1963.

Table with columns: VALUATIONS BY SCHOOL DISTRICTS AS EQUALIZED BY DEPARTMENT OF TAXATION, Tax including State Homestead, State Tax on Non-Homestead, SPECIAL TAXES, TOTAL TAXES, PAID, WHEN PAID, Number of Receipt, March Settlement, June Settlement, November Settlement, Collections to First Monday in January 1965, Delinquent on First Monday in January 1965, Total Delinquent Tax and Penalty, REMARKS.

(Cont. next page)

Vertical text on the right edge of the page: Real Estate, Spring Lake Beach, Spring Lake Island, Spring Lake Point, Spring Lake Point.

Assessment Roll and Tax List of Real Property in the Town of Shingobe

* Indicate Type of Property: R-Residential, C-Commercial, I-Industrial, U-Utility, F-Farm, L-Lakeshore, T-Timber, M-Mineral

Form 50 MILLER-DAVIS CO., MINNEAPOLIS

Table with columns: IN WHOSE NAME ASSESSED, DESCRIPTION OF PROPERTY, TRUE AND FULL VALUATIONS, ASSESSED VALUATIONS, FINAL EQUALIZED VALUE. Includes entries for Lewis A. + Nettie S. Becker, L.A. Becker, John Hanson, Village of Walker, C.B. + Vera L. Ayars, E. Harold + Silvia J. Johnson, John A. + Anna S. Drimmell, Earl E. + Dorothy E. Walters, Harold H. + Gretchen A. Ansel, Wendelin E. + Agnes C. Andert, Carl E. + Dorothy E. Walters.

Cass County, Minnesota, for Taxes for the Year 1963.

Table with columns: VALUATIONS BY SCHOOL DISTRICTS AS EQUALIZED BY DEPARTMENT OF TAXATION, Tax including State Homestead, State Tax on Non-Homestead, SPECIAL TAXES, TOTAL TAXES, PAID, WHEN PAID, Number of Receipt, March Settlement, June Settlement, November Settlement, Collections to First Monday in January 1965, Delinquent on First Monday in January 1965, Total Delinquent Tax and Penalty, REMARKS. Includes entries for 1st HALF PAID, 2nd HALF PAID, PAID IN FULL.

14-31 Real Estate 142-31

PAUL'S FIRST ADDY NO. LUCAS GLEBE BEACH Sunrise Beach SHINGOBE ISLAND CHIPPWA POINT BNA SPRINGS CATERAY JIM'S POINT

Assessment Roll and Tax List of Real Property in the town of Springdale,
 * Indicate Type of Property: R-Residential, C-Commercial, I-Industrial, U-Utility, F-Farm, L-Lakeshore, T-Timber, M-Mineral

IN WHOSE NAME ASSESSED	DESCRIPTION OF PROPERTY		No. School District	Indicate Homestead Yes or No	Agricultural Recr. Yes or No	Indicate Type of Property	TRUE AND FULL VALUATIONS		ASSESSED VALUATIONS									FINAL EQUALIZED VALUE Dollars							
	SUBDIVISION	Sec. or Lot					Town or Block	Rng.	Number of Acres of Land	LAND Exclusive of Structures and Improvements	BUILDINGS and Other Structures	MACHINERY Permanently Attached to Real Estate	TOTAL True and Full Value	RURAL					ALL OTHER			TOTAL ASSESSED VALUE	Total Assessed Value as Equalized by the Board or Review		
														Homestead Up to \$4,000 20%	Over \$4,000 and Non-Homestead 33 1/3%	Timber Land Class Bc 20%	Homestead Up to \$4,000 25%		Over \$4,000 and Non-Homestead 40%	MACHINERY Permanently Attached to Real Estate 33 1/3%	Seasonal and Recreational Cabins 33 1/3%			TOTAL ASSESSED VALUE	
														Dollars	Dollars	Dollars	Dollars		Dollars	Dollars	Dollars			Dollars	Dollars
Augusta J. + Peter E. Falusky	1	2	142	31	21	119	Yes	Yes	9																
Werner M. + Margaret E. Sackman	5	3	38	1	338		No	No	R																
Norace D. Reigl, Adm. Estate of John E. Andrus Jr	9	5					No	Yes	I																
Cort E. + Beatrice Gardner	10	SRN # 2	4	05			No	No	R																
Community Church of Walker	11	Part of Lot 3 E. of Ry					Exempt																		
Colbert L. + Jane Rex. Andrus	13	Part of Gort Lot 1			35.06		No	Yes	I																
Lessie + Irene Gardner	14	1 ac. of Gort Lot 3 S of SRN # 82			1		Yes	No	R																
Eugene + Louisa Harrington	15	4 acs. of " " 3 less sold					Yes	No	R																
Norace D. Reigl, Adm. Est. of John Andrus Jr.	16	Gort Lot 2 - outside			21		No	No	R																
" " " "	17	1 ac. N. E. of Ry of Gort Lot 3			1		No	No	R																
The Simpson Lumber Co	18	1 ac. of Gort Lot 3			1		No	No	C																
" " " "	19	2.5 acs. of " " 3			2.50		No	No	C																
	20																								
8999																									

(Cont. next page)

Cass County, Minnesota, for Taxes for the Year 1963. 71

SOLD FOR TAXES	VALUATIONS BY SCHOOL DISTRICTS AS EQUALIZED BY DEPARTMENT OF TAXATION						Tax Including State Homestead Mills	State Tax on Non-Homestead 8.92 Mills	SPECIAL TAXES	SPECIAL TAXES	TOTAL TAXES	PAID	WHEN PAID	Number of Receipt	March Settlement 1964	June Settlement 1964	Penalty 1964	November Settlement 1964	Penalty 1964	Collections to First Monday in January 1965	Penalty 1965	Delinquent on First Monday in January 1965	Total Delinquent Tax and Penalty	REMARKS
	District No.	Rate	District No.	Rate	District No.	Rate																		
	Dollars	Dollars	Dollars	Dollars	Dollars	Dollars																		
1	H 294						68.52			68.52		1st HALF PAID MAY 29 1964 2nd HALF PAID OCT 31 1964	21003 / 15310									17732	13575	
5			60				15.48	54		16.02		1st HALF PAID MAY 29 1964 2nd HALF PAID SEP 8 1964	17664 / 13221			8.01		8.01				17739	13576	
9			25				5.82	22		6.04		1st HALF PAID MAY 29 1964 2nd HALF PAID OCT 31 1964	21102 / 15911			3.02		3.02				17787	13680	
10	SOLD FOR TAXES		570				147.12	508		152.20											15220		13719	
13			175				40.80	156		42.36		1st HALF PAID MAY 29 1964 2nd HALF PAID OCT 27 1964	19499 / 15697			2.18		2.18				17782	13678	
14			H 414				106.84			106.84		1st HALF PAID MAY 29 1964 2nd HALF PAID OCT 31 1964	20766 / 13894			53.42		53.42				17741	13578	
15			H 352				90.84			90.84		PAID IN FULL MAY 14 1964	9740			90.84							13577	
16			976				227.50	870		236.20		1st HALF PAID MAY 29 1964 2nd HALF PAID OCT 31 1964	21102 / 15911			118.10		118.10				17787	13680	
17			17				3.96	16		4.12		1st HALF PAID MAY 29 1964 2nd HALF PAID OCT 31 1964				2.06		2.06				"	"	
18							10.80	9.64		28.38		1st HALF PAID MAY 26 1964 2nd HALF PAID OCT 31 1964	19397			218.29		218.29				17742	13210	
19							555	496		148.20		1st HALF PAID MAY 26 1964 2nd HALF PAID OCT 31 1964	10481									"	"	
	20		H 294				346.60	30.86		782.26							549.18		458.34			15220		
			1193				226.5	345.8		1128.86														
			1487				3031	451.8																

REAL ESTATE DIVISION MINNAPOLIS
 CASS COUNTY MINNAPOLIS
 SHINOBUKE ISLAND CHIPPWA POINT
 SPARKS POINT
 DUMFRIES POINT
 SPRINGDALE
 SPRINGDALE

Assessment Roll and Tax List of Real Property in the Town of Shingobee

* Indicate Type of Property: R-Residential, C-Commercial, I-Industrial, U-Utility, F-Farm, L-Lakeshore, T-Timber, M-Mineral

Form 50 - MILLER-DAVIS CO., MINNEAPOLIS

Table with columns: IN WHOSE NAME ASSESSED, DESCRIPTION OF PROPERTY, TRUE AND FULL VALUATIONS, ASSESSED VALUATIONS, and FINAL EQUALIZED VALUE. Includes entries for Edward Howard Mysel, Arthur A. + Alpha O. Larson, Roscoe Proff + Phyllis Shenk, etc.

Cass County, Minnesota, for Taxes for the Year 1963.

Table with columns: VALUATIONS BY SCHOOL DISTRICTS AS EQUALIZED BY DEPARTMENT OF TAXATION, Tax Including State Homestead, State Tax on Non-Homestead, SPECIAL TAXES, TOTAL TAXES, PAID, WHEN PAID, Number of Receipt, March Settlement, June Settlement, November Settlement, Penalty, Collections to First Monday in January 1965, Delinquent on First Monday in January 1965, Total Delinquent Tax and Penalty, REMARKS. Includes entries for 1 PAID IN FULL JAN 10 1964, 2 PAID IN FULL DEC 30 1964, etc.

Assessment Roll and Tax List of Real Property in the town of Stingo of Stingobee

* Indicate Type of Property: R-Residential, C-Commercial, I-Industrial, U-Utility, F-Farm, L-Lakeshore, T-Timber, M-Mineral

Cass County, Minnesota, for Taxes for the Year 1963.

IN WHOSE NAME ASSESSED	DESCRIPTION OF PROPERTY				No. School District	Indicate Home-Stead Yes or No	Agri. Recr. Yes or No	Indicate Type of Property	TRUE AND FULL VALUATIONS					ASSESSED VALUATIONS										FINAL EQUALIZED VALUE	
	SUBDIVISION	Sec. or Lot	Town or Block	Rng.					Number of Acres of Land		LAND Exclusive of Structures and Improvements	BUILDINGS and Other Structures	MACHINERY Permanently Attached to Real Estate	TOTAL True and Full Value	RURAL					ALL OTHER					
									Acres	100ths					Homestead Up to \$4,000	Over \$4,000 and Non-Homestead 33 1/3%	Timber Land Class 3e 20%	Homestead Up to \$4,000	Over \$4,000 and Non-Homestead 40%	Machinery Permanently Attached to Real Estate 33 1/3%	Seasonal and Recreational Cabins 33 1/3%	TOTAL ASSESSED VALUE	Total Assessed Value as Equalized by the Board of Review		
																									Dollars
Frank + Dolores Harrison	1	23	4231		2520	119	yes	yes	R											60					
" " "	2						yes	no	R																
Kenneth Willard + Agnes McAuley	3				83		no	no	R																
Thodore Foygard Nozgard	5				1		no	yes	J																
Nels L. Olson	7				1		no	yes	R																
Max Muskatkin	10				180		yes	no	R																
Hawey E. + Virginia Hallett	12						no	no	R			2078	selg. from line 1	O. & D.						754					
Max + Mary M. Muskatkin	15						yes	no	R																
	20				2983																				

SOLD FOR TAXES	VALUATIONS BY SCHOOL DISTRICTS AS EQUALIZED BY DEPARTMENT OF TAXATION						Tax Including State Homestead	State Tax on Non-Homestead	SPECIAL TAXES	SPECIAL TAXES	TOTAL TAXES	PAID	WHEN PAID	Number of Receipt	March Settlement 1964	June Settlement 1964	Penalty	November Settlement 1964	Penalty	Collections to First Monday in January 1965	Penalty	Delinquent on First Monday in January 1965	Total Delinquent Tax and Penalty	REMARKS
	District No.	District No.	District No.	District No.	District No.	District No.																		
	Rate	Rate	Rate	Rate	Rate	Rate																		
	Mills	Mills	Mills	Mills	Mills	Mills																		
1	H 60						1398				1398		2nd HALF PAID OCT 2 1964									17747	13592	
2		H 444					11460				11460		1st HALF PAID MAY 1 8 1964									"	"	
3			H 619				15976	552			16528		3rd PAID IN FULL MAY 1 1964	8801								"	13593	
4																						"	"	
5							1118	42			1160		5th PAID IN FULL MAY 14 1964	11043								"	13589	
6																						"	"	
7							2518	96			2614		7th PAID IN FULL MAY 6 1964	8003								"	13590	
8																						"	"	
9																						"	"	
10											18272		2nd HALF PAID OCT 2 1964	19403									17746	13721
11																								
12											11692		12th PAID IN FULL MAY 1 1964	8779									84.40 abated via	21672
13																								
14																								
15											774		2nd HALF PAID OCT 2 6 1964	19403									17746	13721
16													1st HALF PAID MAY 2 9 1964	10784			387		387					
17																								
18																								
19																								
20											5034													
											65942													
											70976													

FULL'S FIRST ADDN TO CHIPPWA BEACH
 SURTISE BEACH
 STINGOBEER ISLAND
 CHIPPWA POINT
 GRAY SPRINGS
 QUARRY
 DICK'S POINT

Assessment Roll and Tax List of Real Property in the town of Shippea,
 * Indicate Type of Property: R-Residential, C-Commercial, I-Industrial, U-Utility, F-Farm, L-Lakeshore, T-Timber, M-Mineral

Form 5C - MILLER-DAVIS CO., MINNEAPOLIS

IN WHOSE NAME ASSESSED	DESCRIPTION OF PROPERTY				No. School District	Indicate Home-stead Yes or No	Agriculture Rec. Yes or No	Indicate Type of Property	TRUE AND FULL VALUATIONS				ASSESSED VALUATIONS							FINAL EQUALIZED VALUE Dollars			
	SUBDIVISION	Sec. or Lot	Town or Block	Number of Acres of Land					LAND Exclusive of Structures and Improvements	BUILDINGS and Other Structures	MACHINERY Permanently Attached to Real Estate	TOTAL True and Full Value	RURAL			ALL OTHER			MACHINERY Permanently Attached to Real Estate		Seasonal and Recreational Cabins	TOTAL ASSESSED VALUE	Total Assessed Value as Equalized by the Board of Review
													Homestead Up to \$4,000 20%	Over \$4,000 and Non-Homestead 33 1/2%	Timber Land Class 3e 20%	Homestead Up to \$4,000 25%	Over \$4,000 and Non-Homestead 40%	33 1/2%					
Ethel L. Peterson	1	5 1/2 9	Govt. Lot 5	24 142 31	2550	119	70	70	1														
	2																						
	3																						
	4																						
U. S. of America (On trust for Minn. Shippea) Inc	5		Govt. Lot 7																				
	6																						
	7																						
	8																						
	9																						
	10																						
	11																						
	12																						
	13																						
	14																						
	15																						
	16																						
	17																						
	18																						
	19																						
	20																						

2550

Cass County, Minnesota, for Taxes for the Year 1963.

SOLD FOR TAXES	VALUATIONS BY SCHOOL DISTRICTS AS EQUALIZED BY DEPARTMENT OF TAXATION						Tax Including State Homestead	State Tax on Non-Homestead	SPECIAL TAXES	SPECIAL TAXES	TOTAL TAXES	PAID	WHEN PAID	Number of Receipt	March Settlement 1964	June Settlement 1964	Penalty	November Settlement 1964	Penalty	Collections to First Monday in January 1965	Penalty	Delinquent on First Monday in January 1965	Total Delinquent Tax and Penalty	REMARKS						
	District No.	District No.	District No.	District No.	District No.	District No.																			Rate	Rate	Rate	Rate	Rate	Rate
	Rate	Rate	Rate	Rate	Rate	Rate																			Mills	Mills	Mills	Mills	Mills	Mills
1																														

188

4852 168

5020

5020

1367

PARTIAL ADDN TO CHURCH CIRCLE BEACH

Surprise Beach

SHIPPEA ISLAND CHIPPWA POINT

OWA SPRINGS

OTWAY

OW'S POINT

Assessment Roll and Tax List of Real Property in the town of Stingobee,
* Indicate Type of Property: R-Residential, C-Commercial, I-Industrial, U-Utility, F-Farm, L-Lakeshore, T-Timber, M-Mineral

Form 50 MILLER-DAVIS CO., MINNEAPOLIS

Table with columns: IN WHOSE NAME ASSESSED, DESCRIPTION OF PROPERTY, TRUE AND FULL VALUATIONS, ASSESSED VALUATIONS, and FINAL EQUALIZED VALUE. Includes entries for Johan Edin Naustrold + Maxwell Miller, Ethel L. Peterson, Pearl Linde, Chris G. Kansier, and Lloyd L. + Marie B. Barnes.

Cass County, Minnesota, for Taxes for the Year 1963.

Table with columns: VALUATIONS BY SCHOOL DISTRICTS AS EQUALIZED BY DEPARTMENT OF TAXATION, TAX INCLUDING STATE HOMESTEAD, SPECIAL TAXES, TOTAL TAXES, PAID, WHEN PAID, Number of Receipt, March Settlement, June Settlement, November Settlement, Collections to First Monday in January 1965, Delinquent on First Monday in January 1965, Total Delinquent Tax and Penalty, REMARKS. Includes entries for 1-20, with handwritten notes and calculations.

142-31

PAID'S FIRST ADD'N TO CHICKEN GINGER BEAC... SHURTISE BEACH STINGOBBE ISLAND CHIPPWA POINT BVA SPRINGS OUTWAY ON'S POST

Assessment Roll and Tax List of Real Property in the Town of Shingobe, Minnesota

Form 50 MILLER-DAVIS CO., MINNEAPOLIS

Table with columns: IN WHOSE NAME ASSESSED, DESCRIPTION OF PROPERTY, TRUE AND FULL VALUATIONS, ASSESSED VALUATIONS, and FINAL EQUALIZED VALUE.

(cont. next page)

Cass County, Minnesota, for Taxes for the Year 1963.

Table with columns: VALUATIONS BY SCHOOL DISTRICTS AS EQUALIZED BY DEPARTMENT OF TAXATION, Tax Including State Homestead, State Tax on Non-Homestead, SPECIAL TAXES, TOTAL TAXES, PAID, WHEN PAID, Number of Receipt, March Settlement, June Settlement, November Settlement, Collections to First Monday in January 1965, Delinquent on First Monday in January 1965, Total Delinquent Tax and Penalty, REMARKS.

142-31

SHINGOBE BEACH SHINGOBE ISLAND CHIPPEWA POINT SHINGOBE SPRINGS

Assessment Roll and Tax List of Real Property in the Town of Shingobee,
* Indicate Type of Property: R-Residential, C-Commercial, I-Industrial, U-Utility, F-Farm, L-Lakeshore, T-Timber, M-Mineral

Form 50 MILLER-DAVIS CO., MINNEAPOLIS

Cass County, Minnesota, for Taxes for the Year 1963.

Table with columns for: IN WHOSE NAME ASSESSED, DESCRIPTION OF PROPERTY, TRUE AND FULL VALUATIONS, ASSESSED VALUATIONS, VALUATIONS BY SCHOOL DISTRICTS AS EQUALIZED BY DEPARTMENT OF TAXATION, TAXES (SOLD FOR, SPECIAL, TOTAL), PAID (WHEN PAID, March, June, November), and REMARKS. Rows include property details for Harold Fisher, Fred + Carl Christian, Henry John + Gladys Ella La Musga, Norma C. Humphrey, R. E. Barton, William + Anne Elliott, Harold P. + Helen S. Mankenberg, Robert E. + Agnes Seley, William + Anne R. Elliott, Oscar A. + Katherine M. Larson, Henry + Gladys La Musga, Monroe E. + Mary S. Lee, and Richard J. + Michael S. Skumave.

PAUL'S FIRST ADD'N TO CHURCH GROVE BEACH
SUNLISE BEACH
SHINGOBBE ISLAND CHIPPWA POINT
GMA SPRINGS
ONE'S POINT

Assessment Roll and Tax List of Real Property in the Town of Spring Lake, Cass County, Minnesota, for Taxes for the Year 1963.

Table with columns: IN WHOSE NAME ASSESSED, DESCRIPTION OF PROPERTY, TRUE AND FULL VALUATIONS, ASSESSED VALUATIONS, VALUATIONS BY SCHOOL DISTRICTS AS EQUALIZED BY DEPARTMENT OF TAXATION, Tax including State Homestead, State Tax on Non-Homestead, SPECIAL TAXES, TOTAL TAXES, PAID, WHEN PAID, Number of Receipt, March Settlement, June Settlement, November Settlement, Collections to First Monday in January, Delinquent on First Monday in January, Total Delinquent Tax and Penalty, REMARKS.

142-31

142-31 FIRST ADDN NO. CHICKLE GUNER BEACH SUNRISE BEACH STINGOCHER ISLAND CHIPPWA POINT BNA SPRINGS CUTWATER

(Cont. next page)

Assessment Roll and Tax List of Real Property in the Town of Shingobee, Minnesota

Cass County, Minnesota, for Taxes for the Year 1963.

Form 5C MILLER-DAVIS CO., MINNEAPOLIS

Table with columns: IN WHOSE NAME ASSESSED, DESCRIPTION OF PROPERTY, TRUE AND FULL VALUATIONS, ASSESSED VALUATIONS, VALUATIONS BY SCHOOL DISTRICTS AS EQUALIZED BY DEPARTMENT OF TAXATION, SOLD FOR TAXES, PAID, WHEN PAID, Number of Receipt, March Settlement, June Settlement, November Settlement, Collections to First Monday in January, Delinquent on First Monday in January, Total Delinquent Tax and Penalty, REMARKS.

PAID'S FIRST ADDN TO CHITPWA BEACH SHINGOBBE ISLAND CHITPWA POINT BVA SPRINGS CHITWAY INC'S POINT

Assessment Roll and Tax List of Real Property in the Town of Sturgeon, * Indicate Type of Property: R-Residential, C-Commercial, I-Industrial, U-Utility, F-Farm, L-Lakeshore, T-Timber, M-Mineral

Cass County, Minnesota, for Taxes for the Year 1963.

Form 5C MILLER-DAVIS CO., MINNEAPOLIS

Table with columns: IN WHOSE NAME ASSESSED, DESCRIPTION OF PROPERTY, TRUE AND FULL VALUATIONS, ASSESSED VALUATIONS, VALUATIONS BY SCHOOL DISTRICTS AS EQUALIZED BY DEPARTMENT OF TAXATION, TAXES, PAID, WHEN PAID, Number of Receipt, March Settlement, June Settlement, November Settlement, Collections to First Monday in January, Delinquent on First Monday in January, Total Delinquent Tax and Penalty, REMARKS.

(Continued)

PAID'S FIRST ADD'N TO CHITPWA BEACH SUNTISE BEACH SHINGOORE ISLAND CHITPWA POINT BWA SPRINGS OTTAWA

Assessment Roll and Tax List of Real Property in the Town of Shingobe, Cass County, Minnesota, for Taxes for the Year 1963.

Form 50 MILLER-DAVIS CO., MINNEAPOLIS

Table with columns: IN WHOSE NAME ASSESSED, DESCRIPTION OF PROPERTY, TRUE AND FULL VALUATIONS, ASSESSED VALUATIONS, FINAL EQUALIZED VALUE. Includes handwritten entries for various property owners like Hans & Lily Staff, L.W. & Maud Oton, Roy & Agnes Mills, etc.

Cass County, Minnesota, for Taxes for the Year 1963.

Table with columns: VALUATIONS BY SCHOOL DISTRICTS AS EQUALIZED BY DEPARTMENT OF TAXATION, Tax including State Homestead, State Tax on Non-Homestead, SPECIAL TAXES, TOTAL TAXES, PAID, WHEN PAID, Number of Receipt, March Settlement, June Settlement, November Settlement, Collections to First Monday in January, Delinquent on First Monday in January, Total Delinquent Tax and Penalty, REMARKS. Includes handwritten entries for various property owners and their tax payment details.

142-31

Handwritten text on the right edge of the page, including 'Hans & Lily Staff' and other names.

Assessment Roll and Tax List of Real Property in the Town of Stungbee,
* Indicate Type of Property: R-Residential, C-Commercial, I-Industrial, U-Utility, F-Farm, L-Lakeshore, T-Timber, M-Mineral

Form 50 MILLER-DAVIS CO., MINNEAPOLIS

IN WHOSE NAME ASSESSED	DESCRIPTION OF PROPERTY				No. School District	Indicate Homestead Yes or No	Acreage Rec. Yes or No	Indicate Type of Property	TRUE AND FULL VALUATIONS				ASSESSED VALUATIONS						FINAL EQUALIZED VALUE		
	SUBDIVISION	Sec. or Lot	Town or Block	Rng. Acres of Land					LAND Exclusive of Structures and Improvements	BUILDINGS and Other Structures	MACHINERY Permanently Attached to Real Estate	TOTAL True and Full Value	RURAL		ALL OTHER			MACHINERY Seasonal and Recreational Cabins		TOTAL ASSESSED VALUE	Total Assessed Value as Equalized by the Board of Review
													Homestead Up to \$4,000 20%	Over \$4,000 and Non-Homestead 33 1/3%	Timber Land Class 3e 20%	Homestead Up to \$4,000 25%	Over \$4,000 and Non-Homestead 40%				
U. S. of America	NE 1/4 of NE 1/4		29142-31		119																
U. S. of America	NW 1/4 of NE 1/4																				
Arthur Harold + Leonard Stephen Gruber	SW 1/4 of NE 1/4			30.70		Yes	Yes	F													
Wiley G. + Gertrude A. Potter	SE 1/4 of NE 1/4			28.40		Yes	Yes	F													
Leonard Gruber	SE 1/4 of NE 1/4			10		Yes	Yes	F													
U. S. of America	NE 1/4 of NW 1/4 + NW 1/4 of NW 1/4																				
U. S. of America	NW 1/4 of NW 1/4																				
U. S. of America	SW 1/4 of NW 1/4																				
Arthur Harold + Leonard Stephen Gruber	SE 1/4 of NW 1/4			33.60		Yes	Yes	F													
U. S. of America	NE 1/4 of SW 1/4			34.50		Yes	Yes	F													
U. S. of America	NW 1/4 of SW 1/4																				
U. S. of America	SW 1/4 of SW 1/4																				
Arthur Harold + Leonard Stephen Gruber	SE 1/4 of SW 1/4			34.50		Yes	Yes	F													
Roy + Agnes Mills	NE 1/4 of SE 1/4			28.70		Yes	Yes	F													
Arthur Harold + Leonard Stephen Gruber	NW 1/4 of SE 1/4			32.20		Yes	Yes	F													
" " " " " "	SW 1/4 of SE 1/4			32.20		Yes	Yes	F													
Roy + Agnes Mills	SE 1/4 of SE 1/4			29.10		Yes	Yes	F													
				293.90																	

Cass County, Minnesota, for Taxes for the Year 1963.

SOLD FOR TAXES	VALUATIONS BY SCHOOL DISTRICTS AS EQUALIZED BY DEPARTMENT OF TAXATION						Tax including State Homestead	State Tax on Non-Homestead	SPECIAL TAXES	SPECIAL TAXES	TOTAL TAXES	PAID	WHEN PAID	Number of Receipt	March Settlement 1964	June Settlement 1964	Penalty	November Settlement 1964	Penalty	Collections to First Monday in January 1965	Penalty	Delinquent on First Monday in January 1965	Total Delinquent Tax and Penalty	REMARKS
	District No.	District No.	District No.	District No.	District No.	District No.																		
	Rate	Rate	Rate	Rate	Rate	Rate																		
1	119																							
2																								
3	47						10.96			10.96		2nd HALF PAID OCT 1 9 1964 18810										17772	13649	
4	38						8.86			8.86		1st HALF PAID MAY 2 8 1964 12084											13647	
5	33						7.70	30		8.00		PAID IN FULL MAY 2 9 1964 13902											13648	
6												2nd HALF PAID OCT 1 9 1964 18810										17771	13648	
7												1st HALF PAID MAY 2 8 1964 12083												
8																								
9	46						10.72			10.72		2nd HALF PAID OCT 1 9 1964 18810										17772	13649	
10												1st HALF PAID MAY 2 8 1964 12084												
11	62						14.46			14.46		2nd HALF PAID OCT 1 9 1964 18810										17772	13649	
12												1st HALF PAID MAY 2 8 1964 12084												
13																								
14	47						10.96			10.96		2nd HALF PAID OCT 1 9 1964 18810										17772	13649	
15												1st HALF PAID MAY 2 8 1964 12084												
16	143						33.34			33.34		2nd HALF PAID SEP 1 8 1964 17832												
17	522						121.68			121.68		1st HALF PAID MAY 2 8 1964 12281										17765	13642	
18	59						13.76			13.76		2nd HALF PAID OCT 1 9 1964 18810										17772	13649	
19	46						10.72			10.72		1st HALF PAID MAY 2 8 1964 12084												
20	1010						243.16	30		243.46		2nd HALF PAID SEP 1 8 1964 17822										17765	13642	
	33											1st HALF PAID MAY 2 8 1964 12281												
	1043																							

PAUL'S FIRST ADD'N TO CHICKEN CHUCKER BRIDGE
Sunrise Beach
STUNG BEE ISLAND
CHIPPWA POINT
OMA SPRINGS
DUTWAY
OM'S POINT

Assessment Roll and Tax List of Real Property in the Town of Springdale,
* Indicate Type of Property: R-Residential, C-Commercial, I-Industrial, U-Utility, F-Farm, L-Lakeshore, T-Timber, M-Mineral

Form 50 MILLER-DAVIS CO., MINNEAPOLIS

Table with columns: IN WHOSE NAME ASSESSED, DESCRIPTION OF PROPERTY (SUBDIVISION, Sec. or Lot, Town or Block, Rng., Acres 100ths), TRUE AND FULL VALUATIONS (LAND, BUILDINGS, MACHINERY, TOTAL), ASSESSED VALUATIONS (RURAL, ALL OTHER), and FINAL EQUALIZED VALUE. Rows 1-20 list various lots and sections.

Cass County, Minnesota, for Taxes for the Year 1963.

Table with columns: VALUATIONS BY SCHOOL DISTRICTS AS EQUALIZED BY DEPARTMENT OF TAXATION (District No., Rate, Mills), TAXES (SPECIAL, TOTAL), PAID, WHEN PAID, and REMARKS. Rows 1-20 correspond to the assessment roll entries.

142-31

PAUL'S FIRST ADD'N TO
CITIZEN CURE BEAC
Sunrise Beach
SPRINGOKE ISLAND CHIPPWA POINT
RVA SPRINGS
OUTWAY
ONE'S POINT

Assessment Roll and Tax List of Real Property in the Town of Shingobe

Form 5C MILLER-DAVIS CO., MINNEAPOLIS

* Indicate Type of Property: R-Residential, C-Commercial, I-Industrial, U-Utility, F-Farm, L-Lakeshore, T-Timber, M-Mineral

Table with columns: IN WHOSE NAME ASSESSED, DESCRIPTION OF PROPERTY, TRUE AND FULL VALUATIONS, ASSESSED VALUATIONS, and FINAL EQUALIZED VALUE. Includes entries for U.S. of America and State of Minnesota with various subdivisions and acreages.

Cass County, Minnesota, for Taxes for the Year 1963.

Table with columns: VALUATIONS BY SCHOOL DISTRICTS AS EQUALIZED BY DEPARTMENT OF TAXATION, Tax Including State Homestead, State Tax on Non-Homestead, SPECIAL TAXES, TOTAL TAXES, PAID, WHEN PAID, Number of Receipt, March Settlement, June Settlement, November Settlement, Collections to First Monday in January 1965, Delinquent on First Monday in January 1965, Total Delinquent Tax and Penalty, REMARKS. Includes handwritten entries for payments and remarks.

SHINGOBE BEACH, SHINGOBE ISLAND, CHIPPEWA POINT, KONA SPRINGS, OTWAY, JOHN S. POINT

Assessment Roll and Tax List of Real Property in the Town of Springdale

* Indicate Type of Property: R-Residential, C-Commercial, I-Industrial, U-Utility, F-Farm, L-Lakeshore, T-Timber, M-Mineral

Form 5C MILLER-DAVIS CO., MINNEAPOLIS

Table with columns: IN WHOSE NAME ASSESSED, DESCRIPTION OF PROPERTY, TRUE AND FULL VALUATIONS, ASSESSED VALUATIONS, and FINAL EQUALIZED VALUE. Includes handwritten entries for Leonard A. Gruber, Phillip J. Jewell, etc.

Cass County, Minnesota, for Taxes for the Year 1963.

Table with columns: VALUATIONS BY SCHOOL DISTRICTS AS EQUALIZED BY DEPARTMENT OF TAXATION, TAX INCLUDING STATE HOMESTEAD, SPECIAL TAXES, TOTAL TAXES, PAID, WHEN PAID, Number of Receipt, March Settlement, June Settlement, November Settlement, Collections to First Monday in January 1965, Delinquent on First Monday in January 1965, Total Delinquent Tax and Penalty, REMARKS.

142-31

142-31, 142-32, 142-33, 142-34, 142-35, 142-36, 142-37, 142-38, 142-39, 142-40, 142-41, 142-42, 142-43, 142-44, 142-45, 142-46, 142-47, 142-48, 142-49, 142-50, 142-51, 142-52, 142-53, 142-54, 142-55, 142-56, 142-57, 142-58, 142-59, 142-60, 142-61, 142-62, 142-63, 142-64, 142-65, 142-66, 142-67, 142-68, 142-69, 142-70, 142-71, 142-72, 142-73, 142-74, 142-75, 142-76, 142-77, 142-78, 142-79, 142-80, 142-81, 142-82, 142-83, 142-84, 142-85, 142-86, 142-87, 142-88, 142-89, 142-90, 142-91, 142-92, 142-93, 142-94, 142-95, 142-96, 142-97, 142-98, 142-99, 142-100

Assessment Roll and Tax List of Real Property in the Town of Stingobee

* Indicate Type of Property: R-Residential, C-Commercial, I-Industrial, U-Utility, F-Farm, L-Lakeshore, T-Timber, M-Mineral

Form 5C MILLER-DAVIS CO., MINNEAPOLIS

IN WHOSE NAME ASSESSED	DESCRIPTION OF PROPERTY				No. School District	Indicate Homestead Yes or No	Agriculture Yes or No	Indicate Type of Property	TRUE AND FULL VALUATIONS					ASSESSED VALUATIONS						FINAL EQUALIZED VALUE		
	SUBDIVISION	Sec. or Lot	Town or Block	Rng.					Number of Acres of Land	LAND Exclusive of Structures and Improvements	BUILDINGS and Other Structures	MACHINERY Permanently Attached to Real Estate	TOTAL True and Full Value	RURAL		ALL OTHER					TOTAL ASSESSED VALUE	Total Assessed Value as Equalized by the Board of Review
														Acres	100ths	Homestead Up to \$4,000	Over \$4,000 and Non-Homestead	Timber Land Class 3e	Homestead Up to \$4,000			
Bert L. John L. & Andrew L. Johnson	Govt Lot 1	33	142	31	16	05			119	70												
U. S. of America	NW ¼ of NE ¼																					
U. S. of America	Govt Lot 2																					
	SE ¼ of NE ¼																					
E. W. Stanley	NE ¼ of NW ¼				40			yes	yes													
" "	NW ¼ of NW ¼				40			yes	yes													
" "	SW ¼ of NW ¼				40			yes	yes													
" "	SE ¼ of NW ¼				40			yes	yes													
U. S. of America	NE ¼ of SW ¼																					
U. S. of America	NW ¼ of SW ¼																					
U. S. of America	SW ¼ of SW ¼																					
U. S. of America	SE ¼ of SW ¼																					
U. S. of America	Govt Lot 3																					
U. S. of America	" " 4																					
Patricia B. Rieoux	" " 5				6	50																
																					181 55	

Cass County, Minnesota, for Taxes for the Year 1963.

SOLD FOR TAXES	VALUATIONS BY SCHOOL DISTRICTS AS EQUALIZED BY DEPARTMENT OF TAXATION						Tax Including State Homestead	State Tax on Non-Homestead	SPECIAL TAXES	SPECIAL TAXES	TOTAL TAXES	PAID	WHEN PAID	Number of Receipt	March Settlement 1964	June Settlement 1964	Penalty	November Settlement 1964	Penalty	Collections to First Monday in January 1965	Penalty	Delinquent on First Monday in January 1965	Total Delinquent Tax and Penalty	REMARKS
	District No.	District Rate	District No.	District Rate	District No.	District Rate																		
	Dollars	Dollars	Dollars	Dollars	Dollars	Dollars																		
	119	23 Mills						8.95 Mills																
1							87	2028	78		2106	PAID IN FULL	MAY 5 1964	9041		21 06							13652	
6							4 64	1492		1492		2nd HALF PAID OCT 21 1964										17763	13704	
7							4 258	6014		6014		1st HALF PAID MAY 29 1964												
8							4 43	1062		1062		2nd HALF PAID OCT 20 1964		19115		48 13		48 13						
9							4 48	1118		1118		1st HALF PAID MAY 29 1964												
19							221	512	20	532		PAID IN FULL	MAY 29 1964	10764		532							13651	
							4 418	12166	98	12264														

142-31

WATER CURE BEACH SPRINGS BEACH SHIMMEE ISLAND CHIPPWA POINT GVA SPRINGS CHIMAY

Assessment Roll and Tax List of Real Property in the Town of Stingobee, Cass County, Minnesota, for Taxes for the Year 1963. * Indicate Type of Property: R-Residential, C-Commercial, I-Industrial, U-Utility, F-Farm, L-Lakeshore, T-Timber, M-Mineral

Form 50 - MILLER-DAVIS CO., MINNEAPOLIS

Table with columns: IN WHOSE NAME ASSESSED, DESCRIPTION OF PROPERTY, TRUE AND FULL VALUATIONS, ASSESSED VALUATIONS, FINAL EQUALIZED VALUE. Includes handwritten entries for various lots and owners like 'Markus & Lisa Gordon' and 'John E. Andrew III, et al'.

Cass County, Minnesota, for Taxes for the Year 1963.

Table with columns: VALUATIONS BY SCHOOL DISTRICTS AS EQUALIZED BY DEPARTMENT OF TAXATION, Tax Including State Homestead, State Tax on Non-Homestead, SPECIAL TAXES, TOTAL TAXES, PAID, WHEN PAID, Number of Receipt, March Settlement 1964, June Settlement 1964, November Settlement 1964, Collections to First Monday in January 1965, Delinquent on First Monday in January 1965, Total Delinquent Tax and Penalty, REMARKS. Includes handwritten notes on tax payments and adjustments.

142-31

Vertical text on the right edge of the page, possibly a page number or index reference.

Assessment Roll and Tax List of Real Property in the Town of Stoughton, Cass County, Minnesota, for Taxes for the Year 1963.

Cass County, Minnesota, for Taxes for the Year 1963.

Form 50 - MILLER-DAVIS CO., MINNEAPOLIS

* Indicate Type of Property: R-Residential, C-Commercial, I-Industrial, U-Utility, F-Farm, L-Lakeshore, T-Timber, M-Mineral

Table with columns for IN WHOSE NAME ASSESSED, DESCRIPTION OF PROPERTY, TRUE AND FULL VALUATIONS, ASSESSED VALUATIONS, VALUATIONS BY SCHOOL DISTRICTS AS EQUALIZED BY DEPARTMENT OF TAXATION, TAX INCLUDING STATE HOMESTEAD, SPECIAL TAXES, TOTAL TAXES, PAID, WHEN PAID, Number of Receipt, March Settlement, June Settlement, November Settlement, Collections to First Monday in January, Delinquent on First Monday in January, Total Delinquent Tax and Penalty, REMARKS.

(Cont on next page)

84 820

4 12 18 25 913 2583 51 50
209 1812 2021 1131 20 18 02
221 4383 4604 1182 70

771 12 421 60

800

142-31, 142-32, 142-33, 142-34, 142-35, 142-36, 142-37, 142-38, 142-39, 142-40, 142-41, 142-42, 142-43, 142-44, 142-45, 142-46, 142-47, 142-48, 142-49, 142-50

Assessment Roll and Tax List of Real Property in the Town of Sturgeon
* Indicate Type of Property: R-Residential, C-Commercial, I-Industrial, U-Utility, P-Farm, L-Lakeshore, T-Timber, M-Mineral

Cass County, Minnesota, for Taxes for the Year 1963.

Form 5-C MILLER-DAVIS CO., MINNEAPOLIS

Table with multiple columns: IN WHOSE NAME ASSESSED, DESCRIPTION OF PROPERTY (Subdivision, Sec. or Lot, Town or Block, Rng.), TRUE AND FULL VALUATIONS (LAND, BUILDINGS, MACHINERY, TOTAL), ASSESSED VALUATIONS (RURAL, ALL OTHER), VALUATIONS BY SCHOOL DISTRICTS AS EQUALIZED BY DEPARTMENT OF TAXATION (District No., Rate, Mills), Tax including State Homestead, State Tax on Non-Homestead, SPECIAL TAXES, TOTAL TAXES, PAID, WHEN PAID, Number of Receipt, March Settlement 1964, June Settlement 1964, Penalty, November Settlement 1964, Penalty, Collections to First Monday in January 1965, Penalty, Delinquent on First Monday in January 1965, Total Delinquent Tax and Penalty, REMARKS.

St. E. + Riva Bennett
Richard L. + Kathleen E. Heinlen
Clifford + Ardis Silben
Hugh W. Sr. + Hugh W. Norton, Jr
Clifford + Ardis Silben
Hugh W. Sr. + Hugh W. Norton, Jr
" " "
" " "
" " "
" " "
" " "
" " "
" " "
" " "
" " "

PAID IN FULL MAY 29 1964
2nd HALF PAID OCT 26 1964
1st HALF PAID MAY 29 1964
2nd HALF PAID OCT 26 1964
1st HALF PAID MAY 29 1964
2nd HALF PAID OCT 26 1964

142-31
Cass County
Sturgeon
Sunrise Beach
Shinohe Island
Chippewa Point
Iron Springs
Climax
Sturgeon Point

Assessment Roll and Tax List of Real Property in the Town of Shingobe

Cass County, Minnesota, for Taxes for the Year 1963.

Form 5C MILLER-DAVIS CO., MINNEAPOLIS * Indicate Type of Property: R-Residential, C-Commercial, I-Industrial, U-Utility, F-Farm, L-Lakeshore, T-Timber, M-Mineral

Table with columns: IN WHOSE NAME ASSESSED, DESCRIPTION OF PROPERTY, TRUE AND FULL VALUATIONS, ASSESSED VALUATIONS, VALUATIONS BY SCHOOL DISTRICTS AS EQUALIZED BY DEPARTMENT OF TAXATION, TAXES, PAID, WHEN PAID, Number of Receipt, March Settlement, June Settlement, November Settlement, Collections to First Monday in January, Delinquent on First Monday in January, Total Delinquent Tax and Penalty, REMARKS.

Chris J. Kansier
State of Minnesota (cont to Lester J. Brooks)
Erick + Helma L. Almquist
John J. + Helma M. Savari
Melford S. + Orla Knutson
Ralph H. Brown
Erick + Helma L. Almquist
Eleanor Grant + Jean L. Copeland
John A. Turnbull
Myrtle S. Copeland + Hazel S. McKill

142-31
CHERRY CREEK BLANCH
Shurise Beach SHINGOBE ISLAND CHIPPEWA POINT EDNA SPRINGS QUINCY

Assessment Roll and Tax List of Real Property in the Town of Sturgeon,
 * Indicate Type of Property: R-Residential, C-Commercial, I-Industrial, U-Utility, F-Farm, L-Lakeshore, T-Timber, M-Mineral

Cass County, Minnesota, for Taxes for the Year 1963.

Form 50 MILLER-DAVIS CO., MINNEAPOLIS

DESCRIPTION OF PROPERTY

TRUE AND FULL VALUATIONS

ASSESSED VALUATIONS

VALUATIONS BY SCHOOL DISTRICTS AS EQUALIZED BY DEPARTMENT OF TAXATION

IN WHOSE NAME ASSESSED	SUBDIVISION	Sec. or Lot	Town or Block	Rng.	Number of Acres of Land	Acres	100ths
Werner M. + Mary E. Backman	for L.S. 22 142-31	1	1				

No. School District	Indicate Homestead Yes or No	Agricultural or Seasonal Yes or No	Indicate Type of Property	LAND Exclusive of Structures and Improvements	BUILDINGS and Other Structures	MACHINERY Permanently Attached to Real Estate	TOTAL True and Full Value	RURAL					MACHINERY Seasonal and Recreational Cabins	TOTAL ASSESSED VALUE	Total Assessed Value as Equalized by the Board of Review	FINAL EQUALIZED VALUE
								Homestead Up to \$4,000 20%	Over \$4,000 and Non-Homestead 33 1/3%	Timber Land Class 3e 20%	Homestead Up to \$4,000 25%	Over \$4,000 and Non-Homestead 40%				
119	No	J	J													
	No	J	J													
	No	J	L													
	No	J	L													
	No	J	L													
	No	J	L													
	No	J	J													
	No	J	J													
	No	J	J													
	No	J	R													

SOLD FOR TAXES	District No.	District Rate	District No.	District Rate	District No.	District Rate	District No.	District Rate	Tax Including State Homestead	State Tax on Non-Homestead	SPECIAL TAXES	SPECIAL TAXES	TOTAL TAXES	PAID	WHEN PAID	Number of Receipt	March Settlement 1964	June Settlement 1964	Penalty	November Settlement 1964	Penalty	Collections to First Monday in January 1965	Penalty	Delinquent on First Monday in January 1965	Total Delinquent Tax and Penalty	REMARKS
1	10	234	08						242				242	2nd HALF PAID SEP 8 1964											17239	13576
2	10	234	08						242				242	1st HALF PAID MAY 20 1964												
3	15	350	14						364				364	2nd HALF PAID JEP 8 1964												
4	15	350	14						364				364	1st HALF PAID MAY 20 1964												
5	15	350	14						364				364	2nd HALF PAID JEP 8 1964												
6	15	350	14						364				364	1st HALF PAID MAY 20 1964												
7	15	350	14						364				364	2nd HALF PAID JEP 8 1964												
8	10	234	08						242				242	1st HALF PAID MAY 20 1964				40 32		40 32						
9	10	234	08						242				242	2nd HALF PAID SEP 8 1964												
10	10	234	08						242				242	1st HALF PAID MAY 20 1964												
11	10	234	08						242				242	2nd HALF PAID SEP 8 1964												
12	198	4616	176						4792				4792	1st HALF PAID MAY 20 1964												
13																										
14																										
15																										
16																										
17																										
18																										
19																										
20																										

333 7770 294 8064

40 32 40 32

Sunrise Beach

SUNSHINE BEACH STURGEON ISLAND CHIPPEWA POINT BONA SPRINGS COLUMBIA

Assessment Roll and Tax List of Real Property in the Town of Shingobee

Form 5C MILLER-DAVIS CO., MINNEAPOLIS

Table with columns: IN WHOSE NAME ASSESSED, DESCRIPTION OF PROPERTY, TRUE AND FULL VALUATIONS, ASSESSED VALUATIONS, FINAL EQUALIZED VALUE.

Cass County, Minnesota, for Taxes for the Year 1963.

Table with columns: VALUATIONS BY SCHOOL DISTRICTS AS EQUALIZED BY DEPARTMENT OF TAXATION, TAX INCLUDING STATE HOMESTEAD, SPECIAL TAXES, PAID, WHEN PAID, Number of Receipt, March Settlement, June Settlement, November Settlement, Collections to First Monday in January 1965, Delinquent on First Monday in January 1965, Total Delinquent Tax and Penalty, REMARKS.

SHINGOBBE ISLAND Purise Beach

SHINGOBBE ISLAND Purise Beach, ZY POINT, CHIPPEWA POINT, KONA SPRINGS, DUNELAY, JOHN'S POINT

Assessment Roll and Tax List of Real Property in the Town of Shingobee

* Indicate Type of Property: R-Residential, C-Commercial, I-Industrial, U-Utility, F-Farm, L-Lakeshore, T-Timber, M-Mineral

Form 5C MILLER-DAVIS CO., MINNEAPOLIS

Table with columns: IN WHOSE NAME ASSESSED, DESCRIPTION OF PROPERTY, TRUE AND FULL VALUATIONS, ASSESSED VALUATIONS, FINAL EQUALIZED VALUE.

Otto + Edna Kruse

Main data table with 15 columns and 20 rows, containing property details and valuations.

Cass County, Minnesota, for Taxes for the Year 1963.

Table with columns: VALUATIONS BY SCHOOL DISTRICTS AS EQUALIZED BY DEPARTMENT OF TAXATION, TAX INCLUDING STATE HOMESTEAD, STATE TAX ON NON-HOMESTEAD, SPECIAL TAXES, TOTAL TAXES, PAID, WHEN PAID, Number of Receipt, March Settlement 1964, June Settlement 1964, November Settlement 1964, Collections to First Monday in January 1965, Delinquent on First Monday in January 1965, Total Delinquent Tax and Penalty, REMARKS.

SHINGOBBE ISLAND Nurise Beach

SHINGOBBE ISLAND Nurise Beach, CHIPPEWA POINT, GINA SPRINGS, SHINGOBBE BEACH, SHINGOBBE BEACH

Assessment Roll and Tax List of Real Property in the Town of Shingobee

* Indicate Type of Property: R-Residential, C-Commercial, I-Industrial, U-Utility, F-Farm, L-Lakeshore, T-Timber, M-Mineral

Cass County, Minnesota, for Taxes for the Year 1963.

Form 5C - MILLER-DAVIS CO., MINNEAPOLIS

Main table with columns: IN WHOSE NAME ASSESSED, DESCRIPTION OF PROPERTY, TRUE AND FULL VALUATIONS, ASSESSED VALUATIONS, VALUATIONS BY SCHOOL DISTRICTS AS EQUALIZED BY DEPARTMENT OF TAXATION, TAXES, PAID, WHEN PAID, etc.

CHIPPewa Point SHINGOBEE ISLAND Maurice Beach

CHIPPewa Point SHINGOBEE ISLAND Maurice Beach

Paul H. + Germa E. Sartz
James N. + Nadine A. Livingston
Henry + Margaret Holmer
Grayson + Genevieve Fisher

Handwritten notes and calculations at the bottom of the page, including '16900', '94100', '111000', '17346.4371', '3646.4371', '113194', '68461', '44733'.

Assessment Roll and Tax List of Real Property in the Town of Shingobee

* Indicate Type of Property: R-Residential, C-Commercial, I-Industrial, U-Utility, F-Farm, L-Lakeshore, T-Timber, M-Mineral

Form 50 MILLER-DAVIS CO., MINNEAPOLIS

Table with columns: IN WHOSE NAME ASSESSED, DESCRIPTION OF PROPERTY, TRUE AND FULL VALUATIONS, ASSESSED VALUATIONS, and FINAL EQUALIZED VALUE.

Cass County, Minnesota, for Taxes for the Year 1963.

Table with columns: SOLD FOR TAXES, VALUATIONS BY SCHOOL DISTRICTS AS EQUALIZED BY DEPARTMENT OF TAXATION, Tax Including State Homestead, State Tax on Non-Homestead, SPECIAL TAXES, TOTAL TAXES, PAID, WHEN PAID, Number of Receipt, March Settlement, June Settlement, November Settlement, Collections to First Monday in January, Delinquent on First Monday in January, Total Delinquent Tax and Penalty, and REMARKS.

SHINGOBE ISLAND, PEMA PUL., OJIBWAY

SHINGOBE ISLAND, PEMA PUL., OJIBWAY, SHINGOBE ISLAND, PEMA PUL., OJIBWAY

Assessment Roll and Tax List of Real Property in the Town of Shingobee

Form 5C - MILLER-DAVIS CO., MINNEAPOLIS

* Indicate Type of Property: R-Residential, C-Commercial, I-Industrial, U-Utility, F-Farm, L-Lakeshore, T-Timber, M-Mineral

Cass County, Minnesota, for Taxes for the Year 1963.

IN WHOSE NAME ASSESSED	DESCRIPTION OF PROPERTY				No. School District	Indicate Homestead Yes or No	Agricultural Yes or No	Indicate Type of Property	TRUE AND FULL VALUATIONS		ASSESSED VALUATIONS							Total Assessed Value as Equalized by the Board of Review	FINAL EQUALIZED VALUE		
	Ojibway Subdivision	Sec. or Lot	Town or Block	Number of Acres of Land					LAND Exclusive of Structures and Improvements	BUILDINGS and Other Structures	MACHINERY Permanently Attached to Real Estate	TOTAL True and Full Value	RURAL			ALL OTHER					
													Acres 100ths	Homestead Up to \$4,000 20%	Over \$4,000 and Non-Homestead 33 1/3%	Timber Land Class 3e 20%	Homestead Up to \$4,000 25%			Over \$4,000 and Non-Homestead 40%	MACHINERY Permanently Attached to Real Estate 33 1/3%
Kleo A. Sildner		1	2		119	70	70	L													
"		2			70	70	L														
William S. Hagbock		3			70	70	L								710						
"		4			70	R	R														

SHINGOBBE ISLAND Sunrise Beach PEWA FALLS QUINCY

SOLD FOR TAXES	VALUATIONS BY SCHOOL DISTRICTS AS EQUALIZED BY DEPARTMENT OF TAXATION						Tax Including State Homestead	State Tax on Non-Homestead	SPECIAL TAXES	SPECIAL TAXES	TOTAL TAXES	PAID	WHEN PAID	Number of Receipt	March Settlement 1964	June Settlement 1964	November Settlement 1964	Collections to First Monday in January 1965	Delinquent on First Monday in January 1965	Total Delinquent Tax and Penalty	REMARKS
	District No.	District No.	District No.	District No.	District No.	District No.															
	Rate	Rate	Rate	Rate	Rate	Rate															
	119	119	119	119	119																

SHINGOBBE ISLAND Sunrise Beach PEWA FALLS QUINCY

Assessment Roll and Tax List of Real Property in the Town of Springdale

* Indicate Type of Property: R-Residential, C-Commercial, I-Industrial, U-Utility, F-Farm, L-Lakeshore, T-Timber, M-Mineral

14-31
142-31
BALDWIN'S 1st ADD'N TO CITICORE QUINCY BEACH
CITICORE ISLANDS BEACH
SHINGOEE ISLANDS BEACH
PEWA FARM
OUTLEWAY

Table with columns: IN WHOSE NAME ASSESSED, DESCRIPTION OF PROPERTY, TRUE AND FULL VALUATIONS, ASSESSED VALUATIONS (RURAL, ALL OTHER), FINAL EQUALIZED VALUE. Includes entries for Mary Kathryn Helcher, Eloise E. Allensworth, and Zelda E. Johnson.

Cass County, Minnesota, for Taxes for the Year 1963.

Table with columns: VALUATIONS BY SCHOOL DISTRICTS AS EQUALIZED BY DEPARTMENT OF TAXATION, Tax including State Homestead, SPECIAL TAXES, TOTAL TAXES, PAID, WHEN PAID, Number of Receipt, March Settlement 1964, June Settlement 1964, November Settlement 1964, Collections to First Monday in January 1965, Delinquent on First Monday in January 1965, Total Delinquent Tax and Penalty, REMARKS. Includes handwritten entries for 'PAID IN FULL' and tax amounts.

SUNSHINE HEIGHTS
CITICORE QUINCY BEACH
2nd POINT BEACH
SCOTT BEACH
ADDITION
BALDWIN'S 1st ADD'N TO CITICORE QUINCY BEACH

Assessment Roll and Tax List of Real Property in the Town of Shingobee, Minnesota

* Indicate Type of Property: R-Residential, C-Commercial, I-Industrial, U-Utility, F-Farm, L-Lakeshore, T-Timber, M-Mineral

Form 5C MILLER-DAVIS CO., MINNEAPOLIS

14-31

142-31

SHINGOBBE ISLAND

PEWA FALLS

ST. JOSEPH

OUTLEWAY

SHINGOBBE ISLAND

SHINGOBBE ISLAND

SHINGOBBE ISLAND

Table with columns: IN WHOSE NAME ASSESSED, DESCRIPTION OF PROPERTY, TRUE AND FULL VALUATIONS, ASSESSED VALUATIONS, FINAL EQUALIZED VALUE.

Cass County, Minnesota, for Taxes for the Year 1963.

Table with columns: VALUATIONS BY SCHOOL DISTRICTS AS EQUALIZED BY DEPARTMENT OF TAXATION, Tax including State Homestead, State Tax on Non-Homestead, SPECIAL TAXES, TOTAL TAXES, PAID, WHEN PAID, Number of Receipt, March Settlement, June Settlement, November Settlement, Collections to First Monday in January, Delinquent on First Monday in January, Total Delinquent Tax and Penalty, REMARKS.

SHINGOBBE ISLAND

SHINGOBBE ISLAND

SHINGOBBE ISLAND

SHINGOBBE ISLAND

SHINGOBBE ISLAND

SHINGOBBE ISLAND

SHINGOBBE ISLAND

Assessment Roll and Tax List of Real Property in the Town of Shingobee, Minnesota

Form 50 - MILLER-DAVIS CO., MINNEAPOLIS

Table with columns: IN WHOSE NAME ASSESSED, DESCRIPTION OF PROPERTY, TRUE AND FULL VALUATIONS, ASSESSED VALUATIONS, FINAL EQUALIZED VALUE.

Main table listing property owners (e.g., Zelda Ball Johnson, Allen G. + Janet D. Thurman) and their property details across 20 rows.

Cass County, Minnesota, for Taxes for the Year 1963.

Table with columns: SOLD FOR TAXES, VALUATIONS BY SCHOOL DISTRICTS AS EQUALIZED BY DEPARTMENT OF TAXATION, Tax including State Homestead, State Tax on Non-Homestead, SPECIAL TAXES, TOTAL TAXES, PAID, WHEN PAID, Number of Receipt, March Settlement, June Settlement, November Settlement, Collections to First Monday in January, Delinquent on First Monday in January, Total Delinquent Tax and Penalty, REMARKS.

Vertical text on the left edge: 142-31, BALL'S 1st ADD'N TO GITCHEE GUMEE BEACH, SHINGOBBE 1st GITCHEE GUMEE BEACH, PEWA P.L.D., SHINGOBBE 1st GITCHEE GUMEE BEACH, OJLEWAY

Vertical text on the right edge: SHINGOBBE 1st GITCHEE GUMEE BEACH, HARTMAN BEACH, SOLE BREWERY POINT BEACH, ADDITION, HANSON'S POINT

* Indicate Type of Property: R-Residential, C-Commercial, I-Industrial, U-Utility, F-Farm, L-Lakeshore, T-Timber, M-Mineral

Table with columns: IN WHOSE NAME ASSESSED, DESCRIPTION OF PROPERTY (Breezy Point SUBDIVISION), TRUE AND FULL VALUATIONS, ASSESSED VALUATIONS (RURAL, ALL OTHER), and FINAL EQUALIZED VALUE.

Table with columns: VALUATIONS BY SCHOOL DISTRICTS AS EQUALIZED BY DEPARTMENT OF TAXATION, TAXES (SOLD FOR TAXES, State Tax, SPECIAL TAXES, TOTAL TAXES), PAID (1st HALF PAID, 2nd HALF PAID), WHEN PAID (Month Day Year), and REMARKS.

142-31, PENA FULTON, OJLEWAY

SURPRISE HEIGHTS, JACOBSON'S POINT, ADDITION

Assessment Roll and Tax List of Real Property in the Town of Shingobe
* Indicate Type of Property: R-Residential, C-Commercial, I-Industrial, U-Utility, F-Farm, L-Lakeshore, T-Timber, M-Mineral

Form 5C MILLER-DAVIS CO., MINNEAPOLIS

IN WHOSE NAME ASSESSED	DESCRIPTION OF PROPERTY				No. School District	Indicate Homestead Yes or No	Agr. or Rec. Yes or No	Indicate Type of Property	TRUE AND FULL VALUATIONS				ASSESSED VALUATIONS							FINAL EQUALIZED VALUE				
	Breezy Point SUBDIVISION	Sec. or Lot	Town or Rng.	Number of Acres of Land					LAND Exclusive of Structures and Improvements	BUILDINGS and Other Structures	MACHINERY Permanently Attached to Real Estate	TOTAL True and Full Value	RURAL		ALL OTHER			MACHINERY Permanently Attached to Real Estate	Seasonal and Recreational Cabins		TOTAL ASSESSED VALUE	Total Assessed Value as Equalized by the Board of Review		
													Homestead Up to \$4,000	Over \$4,000 and Non-Homestead	Timber Land Class 3e	Homestead Up to \$4,000	Over \$4,000 and Non-Homestead						33 1/2 %	33 1/2 %
													Dollars	Dollars	Dollars	Dollars	Dollars						Dollars	Dollars
W. W. + Elsie J. Waymack	1	20		119	No	R	L																	
" " "	2	21			No	R	L																	
" " "	3	22			No	R	L																	
" " "	4	23			No	R	L																	
" " "	5	24			No	R	L																	
Henry A. + Ellen L. Holm	7	26			Yes	No	R																	
" " "	8	27			Yes	No	R																	
Floyd L. + Marie S. Barnes	9	28			No	R	L																	
" " "	10	29			No	R	L																	
" " "	11	30			No	R	L																	
Jos. J. + Ella M. Pezdirtz	12	31 less E'ly 100'			No	R	L																	
Joseph Warren + Berna Sears Pezdirtz	13	E'ly 100'			No	"	"																	
Georgia M. Wood	14	32			No	R	L																	
" " "	15	33			No	R	L																	
" " "	16	34			No	R	L																	
Carl A. + Cora A. Larson	17	35			No	R	L																	
" " "	18	36			No	R	L																	
" " "	19																							
" " "	20																							

Cass County, Minnesota, for Taxes for the Year 1963.

SOLD FOR TAXES	VALUATIONS BY SCHOOL DISTRICTS AS EQUALIZED BY DEPARTMENT OF TAXATION						Tax Including State Homestead	State Tax on Non-Homestead	SPECIAL TAXES	SPECIAL TAXES	TOTAL TAXES	PAID	WHEN PAID	Number of Receipt	March Settlement 1964	June Settlement 1964	November Settlement 1964	Penalty	Collections to First Monday in January 1965	Penalty	Delinquent on First Monday in January 1965	Total Delinquent Tax and Penalty	REMARKS
	District No.	District No.	District No.	District No.	District No.	District No.																	
	Rate	Rate	Rate	Rate	Rate	Rate																	
	Mills	Mills	Mills	Mills	Mills	Mills																	
1	23					536	20			556	1	PAID IN FULL MAY 6 1964										13266	
2	23					536	20			556	2	PAID IN FULL MAY 6 1964										"	
3	23					536	20			556	3	PAID IN FULL MAY 6 1964										"	
4	941					21934	840			22774	4	PAID IN FULL MAY 6 1964	9175	255 54								"	
5	23					536	20			556	5	PAID IN FULL MAY 6 1964										"	
6	23					536	20			556	6	PAID IN FULL MAY 6 1964										"	
7						362			14	362	7	1st HALF PAID APR 7 1964										17627	
8						12388			480	12388	8	1st HALF PAID APR 7 1964			63 75		63 75					"	
9	262					6106	234			6340	9	1st HALF PAID OCT 5 1964									3170		
10	30					700	26			726	10	1st HALF PAID OCT 5 1964	18185				38 96	272			363		
11	30					700	26			726	11	1st HALF PAID OCT 5 1964									363		
12	455					10606	406			11012	12	PAID IN FULL AUG 31 1964	17533				110 12	275					
13	235					5478	210			5688	13	PAID IN FULL MAY 13 1964	10894									13268	
14	30					700	26			726	14	PAID IN FULL MAY 2 1964										13270	
15	632					14732	564			15296	15	PAID IN FULL MAY 2 1964	12979				167 48					"	
16	30					700	26			726	16	PAID IN FULL MAY 2 1964										"	
17	570					13286	508			13794	17	PAID IN FULL MAY 15 1964										13271	
18	30					700	26			726	18	PAID IN FULL MAY 15 1964	7972									"	
19											19												
20	3360					78322	494			78816	20												

142-31
BALDWIN'S 1st ADD'N TO CINCINNATI BEACH
BREEZY POINT
SHEPHERD'S ADD'N
PENA FIELDS
CULINARY

SURSE HEIGHTS
MARTIN BEACH
SLOKEY'S ADD'N
CASCADIAN BEACH
SCOTT BEACH
ADDITION
BA NA NE BAY
LARSON'S POINT

Assessment Roll and Tax List of Real Property in the Town of Springdale, Minnesota

Form 50 MILLER-DAVIS CO., MINNEAPOLIS

Table with columns: IN WHOSE NAME ASSESSED, DESCRIPTION OF PROPERTY, TRUE AND FULL VALUATIONS, ASSESSED VALUATIONS, and FINAL EQUALIZED VALUE. Includes handwritten entries for property owners like John + Joan C. Nilipaki and Thedore R. + Ella L. Ras mussen.

Cass County, Minnesota, for Taxes for the Year 1963.

Table with columns: VALUATIONS BY SCHOOL DISTRICTS AS EQUALIZED BY DEPARTMENT OF TAXATION, Tax Including State Homestead, State Tax on Non-Homestead, SPECIAL TAXES, TOTAL TAXES, PAID, WHEN PAID, Number of Receipt, March Settlement, June Settlement, November Settlement, Penalty, Collections to First Monday in January 1965, Delinquent on First Monday in January 1965, Total Delinquent Tax and Penalty, REMARKS. Includes handwritten entries for property owners and tax amounts.

Vertical text on the left edge: 142-31, FABRONIA, CRESCENT BEACH, CHEE GUMBE BEACH, GITCHER GUMBE BEACH, BALL'S 1st ADD'N TO GITCHER GUMBE BEACH.

Vertical text on the right edge: SHIRLEY'S ADD'N TO WALKER, CRESCENT BEACH - 1st ADDITION, FABRONIA'S POINT.

Assessment Roll and Tax List of Real Property in the Town of Shingle Lake
 * Indicate Type of Property: R-Residential, C-Commercial, I-Industrial, U-Utility, F-Farm, L-Lakeshore, T-Timber, M-Mineral

Cass County, Minnesota, for Taxes for the Year 1963.

Form 50 MILLER-DAVIS CO., MINNEAPOLIS

IN WHOSE NAME ASSESSED	DESCRIPTION OF PROPERTY					TRUE AND FULL VALUATIONS		ASSESSED VALUATIONS								FINAL EQUALIZED VALUE						
	Crescent Beach SUBDIVISION	Sec. or Lot	Town or Block	Number of Acres of Land	No. School District	Indicate Home-stead Yes or No	Agri. or Seas. Rec. Yes or No	Indicate Type of Property	RURAL		ALL OTHER						Total Assessed Value as Equalized by the Board of Review					
									LAND Exclusive of Structures and Improvements	BUILDINGS and Other Structures	MACHINERY Permanently Attached to Real Estate	TOTAL True and Full Value	Homestead Up to \$4,000 20%	Over \$4,000 and Non-Homestead 33 1/3%	Timber Land Class 3e 20%			Homestead Up to \$4,000 25%	Over \$4,000 and Non-Homestead 40%	MACHINERY Permanently Attached to Real Estate 33 1/3%	Seasonal and Recreational Cabins 33 1/3%	TOTAL ASSESSED VALUE
Dollars	Dollars	Dollars	Dollars	Dollars	Dollars	Dollars	Dollars	Dollars	Dollars	Dollars	Dollars	Dollars	Dollars	Dollars								
Alice L. Jensen		201			119	No	R	L														
Roy M. + Service Merrill		21				No	C															
"		22				No	R	L														
"		23				No	R	L														
Frank + Elizabeth Hirschfield		24				No	R	L														
"		25				No	R	L														
"		26 less E. 15'				No	R	L														
Harold H. + Sylvia Haase		E. 15' of 26				No	R	L														

SOLD FOR TAXES	VALUATIONS BY SCHOOL DISTRICTS AS EQUALIZED BY DEPARTMENT OF TAXATION						Tax including State Homestead	State Tax on Non-Homestead	SPECIAL TAXES	SPECIAL TAXES	TOTAL TAXES	PAID	WHEN PAID	Number of Receipt	March Settlement 1964	June Settlement 1964	November Settlement 1964	Penalty	Collections to First Monday in January 1965	Penalty	Delinquent on First Monday in January 1965	Total Delinquent Tax and Penalty	REMARKS	
	District No.	District No.	District No.	District No.	District No.	District No.																		
	Rate	Rate	Rate	Rate	Rate	Rate																		
	Mills	Mills	Mills	Mills	Mills	Mills																		
	Dollars	Dollars	Dollars	Dollars	Dollars	Dollars																		
1	119	119	119	119	119	330	76 92	2 94			79 86			1	PAID IN FULL MAY 5 1964	79 86							132 81	
2							253 96	3 48			257 44			2	2nd HALF PAID SEP 1 7 1964	12 872	128 72						176 55	132 22
3						170	3962	1 52			41 14			3	2nd HALF PAID MAY 22 1964	20 57	20 57							
4						170	3962	1 52			41 14			4	2nd HALF PAID SEP 1 7 1964	20 57	20 57							
5						36	840	32			8 72			5	PAID IN FULL MAY 15 1964	8 72								132 83
6						1056	24614	9 42			255 56			6	PAID IN FULL MAY 15 1964	255 56								
7						147	3426	1 32			35 58			7	PAID IN FULL MAY 15 1964	35 58								
8						528	12308	4 70			127 78			8	PAID IN FULL MAY 15 1964	127 78								134 50
9														9										
10														10										
11														11										
12														12										
13														13										
14														14										
15														15										
16														16										
17														17										
18														18										
19														19										
20														20										

2437

4 594 = 594
390 = 2827
984 = 3421

56804
25396 2522
82200

67736 16986

BALL'S 1st ADDN TO CHEE GUMBE BEACH
 CHEE GUMBE BEACH
 POINT
 CHEE GUMBE BEACH
 CHEE GUMBE BEACH
 CHEE GUMBE BEACH

SURSE HEIGHTS
 MARTIN BEACH
 SHERIDAN'S ADDN TO WALKER
 CHEE GUMBE BEACH
 ADDITION
 BALL'S 1st ADDN TO WALKER
 CHEE GUMBE BEACH
 ADDITION
 BALL'S 1st ADDN TO WALKER
 CHEE GUMBE BEACH
 ADDITION

Assessment Roll and Tax List of Real Property in the Town of Springdale,
 * Indicate Type of Property: R-Residential, C-Commercial, I-Industrial, U-Utility, F-Farm, L-Lakeshore, T-Timber, M-Mineral

Form 50 MILLER-DAVIS CO., MINNEAPOLIS

IN WHOSE NAME ASSESSED	DESCRIPTION OF PROPERTY					No. School District	Indicate Homestead Yes or No	Agri. or Seas. Rec. Yes or No	* Indicate Type of Property	TRUE AND FULL VALUATIONS				ASSESSED VALUATIONS						FINAL EQUALIZED VALUE						
	Crescent Beach SUBDIVISION	Sec. or Lot	Town or Block	Rng.	Number of Acres of Land					LAND Exclusive of Structures and Improvements	BUILDINGS and Other Structures	MACHINERY Permanently Attached to Real Estate	TOTAL True and Full Value	RURAL		ALL OTHER			MACHINERY Permanently Attached to Real Estate		Seasonal and Recreational Cabins	TOTAL ASSESSED VALUE	Total Assessed Value as Equalized by the Board of Review	Dollars		
														Homestead Up to \$4,000	Over \$4,000 and Non-Homestead	Timber Land Class 3e	Homestead Up to \$4,000	Over \$4,000 and Non-Homestead							33 1/2 %	33 1/2 %
														Dollars	Dollars	Dollars	Dollars	Dollars							Dollars	Dollars
Agnes Lockman		1 2																								
" "		2																								
" "		3																								
" "		4																								
" "		5																								

Cass County, Minnesota, for Taxes for the Year 1963.

SOLD FOR TAXES	VALUATIONS BY SCHOOL DISTRICTS AS EQUALIZED BY DEPARTMENT OF TAXATION						Tax Including State Homestead	State Tax on Non-Homestead	SPECIAL TAXES	SPECIAL TAXES	TOTAL TAXES	PAID	WHEN PAID	Number of Receipt	March Settlement 1964	June Settlement 1964	Penalty	November Settlement 1964	Penalty	Collections to First Monday in January 1965	Penalty	Delinquent on First Monday in January 1965	Total Delinquent Tax and Penalty	REMARKS	
	District No.	District No.	District No.	District No.	District No.	District No.																			
	Rate	Rate	Rate	Rate	Rate	Rate																			
	Mills	Mills	Mills	Mills	Mills	Mills																			
	Dollars	Dollars	Dollars	Dollars	Dollars	Dollars																			

4 120 3100 3100 3100

SURGE HEIGHTS
 MARTIN BEACH
 SEWERY'S ADD'L TO MARKET
 CRESWELL BEACH
 ADDITION
 BA NE NE BAY
 HANSON'S POINT

Assessment Roll and Tax List of Real Property in the Town of Shingobee, Minnesota

Form 50 - MILLER-DAVIS CO., MINNEAPOLIS

Table with columns: IN WHOSE NAME ASSESSED, DESCRIPTION OF PROPERTY, TRUE AND FULL VALUATIONS, ASSESSED VALUATIONS, and FINAL EQUALIZED VALUE.

Cass County, Minnesota, for Taxes for the Year 1963.

Table with columns: VALUATIONS BY SCHOOL DISTRICTS AS EQUALIZED BY DEPARTMENT OF TAXATION, TAXES, PAID, WHEN PAID, and REMARKS.

Assessment Roll and Tax List of Real Property in the Town of Springdale of St. Louis Mo., St. Louis Mo. * Indicate Type of Property: R-Residential, C-Commercial, I-Industrial, U-Utility, F-Farm, L-Lakeshore, T-Timber, M-Mineral

Form 5C - MILLER-DAVIS CO., MINNEAPOLIS

IN WHOSE NAME ASSESSED	DESCRIPTION OF PROPERTY			No. School District	Indicate Homestead Yes or No	Agri or Sess. Reer. Yes or No	Indicate Type of Property	TRUE AND FULL VALUATIONS		ASSESSED VALUATIONS							FINAL EQUALIZED VALUE				
	Subdivision	Sec. or Lot	Town or Block					Number of Acres of Land	LAND Exclusive of Structures and Improvements	BUILDINGS and Other Structures	MACHINERY Permanently Attached to Real Estate	TOTAL True and Full Value	RURAL			ALL OTHER					
													Acres	100ths	Homestead Up to \$4,000 20%	Over \$4,000 and Non-Homestead 33 1/4%		Timber Land Class 3e 20%	Homestead Up to \$4,000 25%	Over \$4,000 and Non-Homestead 40%	MACHINERY Permanently Attached to Real Estate 33 1/4%
U. S. of America																					
U. S. of America																					
U. S. of America																					
U. S. of America																					
U. S. of America																					
U. S. of America																					

Cass County, Minnesota, for Taxes for the Year 1963.

SOLD FOR TAXES	VALUATIONS BY SCHOOL DISTRICTS AS EQUALIZED BY DEPARTMENT OF TAXATION						Tax including State Homestead	State Tax on Non-Homestead	SPECIAL TAXES	SPECIAL TAXES	TOTAL TAXES	PAID	WHEN PAID	Number of Receipt	March Settlement 1964	June Settlement 1964	Penalty	November Settlement 1964	Penalty	Collections to First Monday in January 1965	Penalty	Delinquent on First Monday in January 1965	Total Delinquent Tax and Penalty	REMARKS
	District No.	District No.	District No.	District No.	District No.	District No.																		
	Rate	Rate	Rate	Rate	Rate	Rate																		

142-31 BALL'S 1st ADD'N TO GUYCHIE GUNKE BEACH WEST BEACH 1st ADDITION WA BA NA NE BAY CUTWAY

SURSE HIGHETS BRITTON BEACH SLOPER'S ADD'N TO WALKER ISLAND PARK POINT HANSON'S POINT

Assessment Roll and Tax List of Real Property in the Town of Shingobe, Minnesota

Form 50 MILLER-DAVIS CO., MINNEAPOLIS

SUNRISE HEIGHTS, CHEESE BEACH, GUMBLE BEACH, POINT, HAY ADDITION, NE BAY, WA BA WA NE BAY, OUTWAY

Main table with columns: IN WHOSE NAME ASSESSED, DESCRIPTION OF PROPERTY, TRUE AND FULL VALUATIONS, ASSESSED VALUATIONS, and FINAL EQUALIZED VALUE.

Cass County, Minnesota, for Taxes for the Year 1963.

Tax summary table with columns: VALUATIONS BY SCHOOL DISTRICTS AS EQUALIZED BY DEPARTMENT OF TAXATION, Tax Including State Homestead, State Tax on Non-Homestead, SPECIAL TAXES, TOTAL TAXES, PAID, WHEN PAID, Number of Receipt, March Settlement, June Settlement, November Settlement, Delinquent on First Monday in January 1965, Total Delinquent Tax and Penalty, REMARKS.

SHADY LAKE, GARTNER BEACH, SCOTT'S ADDN TO WALKER BE ISLAND, 1st ADDN TO PARK POINT, JANSON'S POINT

Assessment Roll and Tax List of Real Property in the Town of Spring Lake, Minnesota

Form 5C - MILLER-DAVIS CO., MINNEAPOLIS

Table with columns: IN WHOSE NAME ASSESSED, DESCRIPTION OF PROPERTY, TRUE AND FULL VALUATIONS, ASSESSED VALUATIONS, and FINAL EQUALIZED VALUE. Includes handwritten entries for 'Helding a + Jeanette Johnson'.

Cass County, Minnesota, for Taxes for the Year 1963.

Table with columns: VALUATIONS BY SCHOOL DISTRICTS AS EQUALIZED BY DEPARTMENT OF TAXATION, TAXES, PAID, WHEN PAID, and REMARKS. Includes handwritten entries for tax amounts and payment dates.

Vertical text on the left edge of the page: SUNRISE HEIGHTS, CHEE GUMEE BEACH, POINT BEACH, LENT BEACH, WA BA NA NE BAY, WA BA NA NE BAY ADDITION.

Vertical text on the right edge of the page: SHADY LAKE, CHARITY BEACH, SMOKEY'S ADD'N TO WALKER BE ISLAND, S 1st ADD'N TO PARK POINT, HANSON'S POINT.

Assessment Roll and Tax List of Real Property in the Town of Spring Lake, Cass County, Minnesota, for Taxes for the Year 1963.

Form 50 - MILLER-DAVIS CO., MINNEAPOLIS

Table with columns: IN WHOSE NAME ASSESSED, DESCRIPTION OF PROPERTY, TRUE AND FULL VALUATIONS, ASSESSED VALUATIONS, and FINAL EQUALIZED VALUE. Includes handwritten entries for property owners like James W. + Evelyn S. Schwartz and Samuel V. + Mildred M. Carpenter.

Cass County, Minnesota, for Taxes for the Year 1963.

Table with columns: VALUATIONS BY SCHOOL DISTRICTS AS EQUALIZED BY DEPARTMENT OF TAXATION, TAX INCLUDING STATE HOMESTEAD, SPECIAL TAXES, TOTAL TAXES, PAID, WHEN PAID, and REMARKS. Includes handwritten entries for tax amounts and payment dates.

Vertical text on the left margin: 141-31, 142-31, SURPRISE HEIGHTS, CHARITON BEACH, POINT CHEER, POINT BEACH BY POINT CHEER, POINT BEACH, WA BA MA NE BAY ADDITION, PARK POINT, ANSON'S POINT.

Vertical text on the right margin: SANDY LAKE POINT, CHRISTMAS, SHINGO, SMOKEY'S ADD'N TO WALKER ISLAND, S 1st ADD'N TO ISLAND, PARK POINT, ANSON'S POINT.

Assessment Roll and Tax List of Real Property in the Town of Springdale

Form 50 MILLER-DAVIS CO., MINNEAPOLIS

Table with columns: IN WHOSE NAME ASSESSED, DESCRIPTION OF PROPERTY, TRUE AND FULL VALUATIONS, ASSESSED VALUATIONS, and FINAL EQUALIZED VALUE. Includes handwritten entries for Norman James Iverson, Lucia H. Petroske, and others.

Cass County, Minnesota, for Taxes for the Year 1963.

Table with columns: VALUATIONS BY SCHOOL DISTRICTS AS EQUALIZED BY DEPARTMENT OF TAXATION, TAXES, PAID, WHEN PAID, and REMARKS. Includes handwritten entries for various districts and payment dates.

Vertical text on the left margin: SUNRISE HEIGHTS, CHARITON BEACH, SMOKEY'S ADD'N TO WALKER, CENT BEACH-1st ADDITION, WA BA NA NE BAY

Vertical text on the right margin: STADY LANE POINT, CHRISTMAS ISLAND, SPRINGDALE ISLAND, SPRINGDALE'S 1st ADD'N TO ISLAND, PARK POINT, JANSON'S POINT

Assessment Roll and Tax List of Real Property in the Town of Shingobee, Minnesota

Form 50 HALL-DAVIS CO., MINNEAPOLIS

Table with columns: IN WHOSE NAME ASSESSED, DESCRIPTION OF PROPERTY, TRUE AND FULL VALUATIONS, ASSESSED VALUATIONS, and FINAL EQUALIZED VALUE. Includes handwritten entries for Theodore H. + Marie S. Benson, Harold H. + Amelia G. Fallman, and Kathryn D. Belford.

Cass County, Minnesota, for Taxes for the Year 1963.

Table with columns: SOLD FOR TAXES, VALUATIONS BY SCHOOL DISTRICTS AS EQUALIZED BY DEPARTMENT OF TAXATION, Tax including State Homestead, State Tax on Non-Homestead, SPECIAL TAXES, TOTAL TAXES, PAID, WHEN PAID, Number of Receipt, March Settlement 1964, June Settlement 1964, Penalty, November Settlement 1964, Collections to First Monday in January 1965, Delinquent on First Monday in January 1965, Total Delinquent Tax and Penalty, and REMARKS. Includes handwritten tax amounts and payment dates.

Vertical text on the left edge of the page: SUNRISE HEIGHTS, CHARITON BEACH, S ADD'N TO WALKER, S ADD'N TO WALKER, WA BA WA NE BAY BELFORD'S 1ST ADD'N TO SHINGOBBE ISLAND.

Vertical text on the right edge of the page: STADY LANE, CHRISTMAS POINT, SHINGOBBE KNOLL, PLAT OF HIGH ADDRESS, PARK POINT, HANSON'S POINT.

Assessment Roll and Tax List of Real Property in the Town of Shingobee

Form 50 - MILLER-DAVIS CO., MINNEAPOLIS

* Indicate Type of Property: R-Residential, C-Commercial, I-Industrial, U-Utility, F-Farm, L-Lakeshore, T-Timber, M-Mineral

DESCRIPTION OF PROPERTY

TRUE AND FULL VALUATIONS

ASSESSED VALUATIONS

Table with columns: IN WHOSE NAME ASSESSED, Fark Point SUBDIVISION, Sec. of Lot, Town or Block, Ring, Number of Acres of Land, No. School District, Indicate Homestead, Agri. or Seas. Recr. Yes or No, Indicate Type of Property, LAND Exclusive of Structures and Improvements, BUILDINGS and Other Structures, MACHINERY Permanently Attached to Real Estate, TOTAL True and Full Value, RURAL (Homestead, Over \$4,000 and Non-Homestead), ALL OTHER (Homestead, Over \$4,000 and Non-Homestead), MACHINERY Permanently Attached to Real Estate, Seasonal and Recreational Cabins, TOTAL ASSESSED VALUE, Total Assessed Value as Equalized by the Board of Review, FINAL EQUALIZED VALUE.

Cass County, Minnesota, for Taxes for the Year 1963.

Table with columns: SOLD FOR TAXES, VALUATIONS BY SCHOOL DISTRICTS AS EQUALIZED BY DEPARTMENT OF TAXATION, Tax including State Homestead, State Tax on Non-Homestead, SPECIAL TAXES, SPECIAL TAXES, TOTAL TAXES, PAID, WHEN PAID, Number of Receipt, March Settlement 1964, June Settlement 1964, Penalty, November Settlement 1964, Penalty, Collections to First Monday in January 1965, Penalty, Delinquent on First Monday in January 1965, Total Delinquent Tax and Penalty, REMARKS.

141-31 SUNRISE HEIGHTS, 142-31 CHARITON BEACH, SADDY LAKE POINT, CHRISTMAS, SHINGOBE KNOLL, PLAT OF HIGH ADRES, Personal, HANSON'S POINT

Assessment Roll and Tax List of Real Property in the Town of Sturgeon

141-31 SUNRISE HEIGHTS
142-31 CHARITON BEACH

143-31 SADD'N TO WALKER
144-31 SADD'N TO VERFORD'S 1ST ADD'N TO SHINGOBE ISLAND

145-31 PARK POINT
146-31 VERFORD'S 1ST ADD'N TO SHINGOBE ISLAND

147-31 VERFORD'S 1ST ADD'N TO SHINGOBE ISLAND

Table with columns: IN WHOSE NAME ASSESSED, DESCRIPTION OF PROPERTY, TRUE AND FULL VALUATIONS, ASSESSED VALUATIONS, and FINAL EQUALIZED VALUE.

Cass County, Minnesota, for Taxes for the Year 1963.

Table with columns: SOLD FOR TAXES, VALUATIONS BY SCHOOL DISTRICTS AS EQUALIZED BY DEPARTMENT OF TAXATION, Tax including State Homestead, SPECIAL TAXES, TOTAL TAXES, PAID, WHEN PAID, Number of Receipt, March Settlement 1964, June Settlement 1964, Penalty, November Settlement 1964, Penalty, Collections to First Monday in January 1965, Delinquent on First Monday in January 1965, Total Delinquent Tax and Penalty, REMARKS.

SHADY LAKE
CHRISTMAS
SHINGOBE KNOLL
PLAT OF
BIRCH ACRES
PERSONAL
HANSON'S POINT

Assessment Roll and Tax List of Real Property in the Town of Stingobee

Cass County, Minnesota, for Taxes for the Year 1963.

* Indicate Type of Property: R-Residential, C-Commercial, I-Industrial, U-Utility, F-Farm, L-Lakeshore, T-Timber, M-Mineral

Table with columns: IN WHOSE NAME ASSESSED, DESCRIPTION OF PROPERTY, TRUE AND FULL VALUATIONS, ASSESSED VALUATIONS, VALUATIONS BY SCHOOL DISTRICTS AS EQUALIZED BY DEPARTMENT OF TAXATION, TAXES, PAID, WHEN PAID, and REMARKS. Includes entries for Clarence & Sadie S. Elsenpeter, Al E. Wood + Burton Wood, and Raymond S. + Eleanor M. Zulkowski.

140-31 SUNRISE BEACHS
142-31 CHARITON BEACH
S ADD'N TO WALKER
S ADD'N TO BELFORD'S 1ST ADD'N TO STINGOBBE ISLAND
PARK POINT
PARK POINT

SHADY LAKE
POINT
CHRISTMAS
STINGOBBE KNOLL
PLANT OR
HITCH ALLEYS
PERSONAL
TANSON'S POINT

Assessment Roll and Tax List of Real Property in the Town of Springdale of Minnesota
 * Indicate Type of Property: R-Residential, C-Commercial, I-Industrial, U-Utility, F-Farm, L-Lakeshore, T-Timber, M-Mineral
 Cass County, Minnesota, for Taxes for the Year 1963.

Form 5C MILLER-DAVIS CO., MINNEAPOLIS

141-31 SURPRISE HEIGHTS
 142-31 CHARLTON BEACH
 S ADD'N TO WALKER
 BELFORD'S 1st ADD'N TO SHINGOBE ISLAND
 PLATE FURNISH
 HANSON'S POINT
 SHADY LAKE
 CHRISTMAS POINT
 SHINGOBE KNOLL
 PLAT OF HIGH ACRES
 Personal

IN WHOSE NAME ASSESSED	DESCRIPTION OF PROPERTY				No. School District	Indicate Homestead Yes or No	Agricultural or Lease Recr. Yes or No	Indicate Type of Property	TRUE AND FULL VALUATIONS				ASSESSED VALUATIONS							FINAL EQUALIZED VALUE			
	Subdivision	Sec. or Lot	Town or Block	Rng.					Number of Acres of Land	LAND Exclusive of Structures and Improvements	BUILDINGS and Other Structures	MACHINERY Permanently Attached to Real Estate	TOTAL True and Full Value	RURAL		ALL OTHER			Machinery Permanently Attached to Real Estate		Seasonal and Recreational Cabins	TOTAL ASSESSED VALUE	Total Assessed Value as Equalized by the Board of Review
														Acres	100ths	Homestead Up to \$4,000 20%	Over \$4,000 and Non-Homestead 33 1/3%	Timber Land Class 3e 20%					
John S. + Sofie Hanson	Hanson's Point	1																					
	Subdivision																						
	Part of Subd Lot 3-7-150'																						
	Subd Lot 4 lying E 1/4 N. R. 4. 10-142-31																						
Carl + Florence Johnson		6																					
John S. + Sofie Hanson		8																					

SOLD FOR TAXES	VALUATIONS BY SCHOOL DISTRICTS AS EQUALIZED BY DEPARTMENT OF TAXATION						Tax Including State Homestead	State Tax on Non-Homestead	SPECIAL TAXES	SPECIAL TAXES	TOTAL TAXES	PAID	WHEN PAID	Number of Receipt	March Settlement 1964	June Settlement 1964	Penalty	November Settlement 1964	Penalty	Collections to First Monday in January 1965	Penalty	Delinquent on First Monday in January 1965	Total Delinquent Tax and Penalty	REMARKS
	District No.	Rate	District No.	Rate	District No.	Rate																		
	1	119	2.2	119	2.2	119	2.2																	
	2	119	2.2	119	2.2	119	2.2																	
	3	119	2.2	119	2.2	119	2.2																	
	4	119	2.2	119	2.2	119	2.2																	
	5	119	2.2	119	2.2	119	2.2																	
	6	144		144		144		3356	128		3484		PAID IN FULL FEB 1 8 1964	2598	3484							13339		
	7	407		407		407		9486	364		9850		PAID IN FULL FEB 1 8 1964	9850										
	8	119	2.2	119	2.2	119	2.2																	
	9	119	2.2	119	2.2	119	2.2																	
	10	119	2.2	119	2.2	119	2.2																	
	11	119	2.2	119	2.2	119	2.2																	
	12	119	2.2	119	2.2	119	2.2																	
	13																							
	14																							
	15																							
	16																							
	17																							
	18																							
	19																							
	20																							

551 450 - 1001 12842 892 25354
 11620 24462 13334 60 13 60 10

Assessment Roll and Tax List of Real Property in the Town of Stingobee

* Indicate Type of Property: R-Residential, C-Commercial, I-Industrial, U-Utility, F-Farm, L-Lakeshore, T-Timber, M-Mineral

Form 5C MILLER-DAVIS CO., MINNEAPOLIS

IN WHOSE NAME ASSESSED	DESCRIPTION OF PROPERTY				No. School District	Indicate Homestead Yes or No	Agricultural or Seasonal Rec. Yes or No	Indicate Type of Property	TRUE AND FULL VALUATIONS													FINAL EQUALIZED VALUE	
	Sec. or Lot	Town or Block	Rng.	Number of Acres of Land					LAND Exclusive of Structures and Improvements	BUILDINGS and Other Structures	MACHINERY Permanently Attached to Real Estate	TOTAL True and Full Value	RURAL			ALL OTHER			MACHINERY Permanently Attached to Real Estate	Seasonal and Recreational Cabins	TOTAL ASSESSED VALUE		Total Assessed Value as Equalized by the Board of Review
													Homestead Up to \$4,000 20%	Over \$4,000 and Non-Homestead 33 1/3%	Timber Land Class 3e 20%	Homestead Up to \$4,000 25%	Over \$4,000 and Non-Homestead 40%	33 1/3%					
Henry Heathman	1				119	No	No	L															
Henry + Shirley J. Heathman	2					No	No	L															
"	3					No	No	L															
Ray E. + Elnora M. Archer	4					No	No	L															
Harold E. + Agnes E. Markley	5					No	No	L															
Robert E. + Harold E. Markley	6					No	No	L															
Lester Arne	7					No	No	L															
Vernon E. + Neva M. Charist	8					No	No	L															
Pearce Rogers	9					No	RR	L															
Odean Agre	10					No	RR	L															
Charles C. + Mara S. Skillman	11					No	RR	L															
Michael + Charlotte Lukas	12					No	RR	L															

Cass County, Minnesota, for Taxes for the Year 1963.

SOLD FOR TAXES	VALUATIONS BY SCHOOL DISTRICTS AS EQUALIZED BY DEPARTMENT OF TAXATION						Tax Including State Homestead	State Tax on Non-Homestead	SPECIAL TAXES	SPECIAL TAXES	TOTAL TAXES	PAID	WHEN PAID	Number of Receipt	March Settlement 1964	June Settlement 1964	Penalty	November Settlement 1964	Penalty	Collections to First Monday in January 1965	Penalty	Delinquent on First Monday in January 1965	Total Delinquent Tax and Penalty	REMARKS
	District No.	District No.	District No.	District No.	District No.	District No.																		
1	119	119	119	119	119	119	594	20			614	1	MAY 2 9 1964										17626 13341	
2	119	119	119	119	119	119	594	20			614	2	MAY 2 9 1964										" "	
3	119	119	119	119	119	119	594	20			614	3	MAY 2 9 1964										" "	
4	119	119	119	119	119	119	594	20			614	4	MAY 2 9 1964										" "	
5	119	119	119	119	119	119	594	20			614	5	MAY 2 9 1964										13346	
6	119	119	119	119	119	119	594	20			614	6	MAY 2 9 1964										13347	
7	119	119	119	119	119	119	594	20			614	7	MAY 2 9 1964										"	
8	119	119	119	119	119	119	594	20			614	8	MAY 2 9 1964										13342	
9	119	119	119	119	119	119	594	20			614	9	MAY 2 9 1964										13349	
10	119	119	119	119	119	119	594	20			614	10	MAY 2 9 1964										13340	
11	119	119	119	119	119	119	594	20			614	11	MAY 2 9 1964										13350	
12	119	119	119	119	119	119	594	20			614	12	MAY 2 9 1964										13341	
13	119	119	119	119	119	119	594	20			614	13	MAY 2 9 1964										13205	
14																								
15																								
16																								
17																								
18																								
19																								
20																								

SHADY LANE, SUN BEACH, CHARTON BEACH, S ADD'N TO WALKER, S ADD'N TO VERNOR'S ISL, HANSON'S POINT

CHRISTMAS POINT, STINGOBBE ENCL, PLAT OF BIRCH ACRES, Personal

Assessment Roll and Tax List of Real Property in the Town of Spring Lake

* Indicate Type of Property: R-Residential, C-Commercial, I-Industrial, U-Utility, F-Farm, L-Lakeshore, T-Timber, M-Mineral

Cass County, Minnesota, for Taxes for the Year 1963.

Form 5C MILLER-DAVIS CO., MINNEAPOLIS

Table with columns: IN WHOSE NAME ASSESSED, DESCRIPTION OF PROPERTY, TRUE AND FULL VALUATIONS (RURAL, ALL OTHER, MACHINERY, etc.), and FINAL EQUALIZED VALUE.

Table with columns: SOLD FOR TAXES, VALUATIONS BY SCHOOL DISTRICTS AS EQUALIZED BY DEPARTMENT OF TAXATION, Tax Including State Homestead, SPECIAL TAXES, TOTAL TAXES, PAID, WHEN PAID, Number of Receipt, March Settlement, June Settlement, November Settlement, Penalty, Collections to First Monday in January 1965, Delinquent on First Monday in January 1965, Total Delinquent Tax and Penalty, REMARKS.

Vertical text on the left edge: SHADY LANE, CHERRY CHRISTMAS POINT, S ADDN TO WALKER, S ADDN TO WALKER, BEACH 1 & 2, HANSON'S POINT.

Vertical text on the right edge: SPRING LAKE, PLAT OF HIGH ACRES, Personal.

Assessment Roll and Tax List of Real Property in the Town of Shingobee

* Indicate Type of Property: R-Residential, C-Commercial, I-Industrial, U-Utility, F-Farm, L-Lakeshore, T-Timber, M-Mineral

Form 5C MILLER-DAVIS CO., MINNEAPOLIS

DESCRIPTION OF PROPERTY

TRUE AND FULL VALUATIONS

ASSESSED VALUATIONS

Table with columns: IN WHOSE NAME ASSESSED, Shingobee Knoll SUBDIVISION, Part of Sect. 6, Sec. 11-14-31, Acres, 100ths, No. School District, Indicate Homestead, Agri. Rec., Indicate Type of Property, LAND Exclusive of Structures and Improvements, BUILDINGS and Other Structures, MACHINERY Permanently Attached to Real Estate, TOTAL True and Full Value, RURAL (Homestead, Over \$4,000 and Non-Homestead), ALL OTHER (Timber Land Class 3e, Homestead, Over \$4,000 and Non-Homestead), MACHINERY Permanently Attached to Real Estate, Seasonal and Recreational Cabins, TOTAL ASSESSED VALUE, Total Assessed Value as Equalized by the Board of Review, FINAL EQUALIZED VALUE.

Mario Juchow

Cass County, Minnesota, for Taxes for the Year 1963.

Table with columns: SOLD FOR TAXES, VALUATIONS BY SCHOOL DISTRICTS AS EQUALIZED BY DEPARTMENT OF TAXATION (District No., Rate, etc.), Tax including State Homestead, State Tax on Non-Homestead, SPECIAL TAXES, TOTAL TAXES, PAID, WHEN PAID, Number of Receipt, March Settlement 1964, June Settlement 1964, November Settlement 1964, Penalty, Collections to First Monday in January 1965, Delinquent on First Monday in January 1965, Total Delinquent Tax and Penalty, REMARKS.

390 10062 338 10400

PLAT OF BIRCH ARRES

Personal

Assessment Roll and Tax List of Real Property in the Town of Shingobe

Form 5C MILLER-DAVIS CO., MINNEAPOLIS

* Indicate Type of Property: R-Residential, C-Commercial, I-Industrial, U-Utility, F-Farm, L-Lakeshore, T-Timber, M-Mineral

DESCRIPTION OF PROPERTY

IN WHOSE NAME ASSESSED	Subdivision	Sec. or Lot	Town or Block	Rng.	Number of Acres of Land	Acres	100ths
------------------------	-------------	-------------	---------------	------	-------------------------	-------	--------

Plot of Birch Acres

Govt Lot 2 36-141-31

Wm & Marion Longbeck

Wayne A. Lowry Jr. + Ralph H. Silbertson

Wayne A. Lowry Jr. + Ralph H. Silbertson

William C. + Ella M. Schuck

Wayne A. Lowry Jr. + Ralph H. Silbertson

" " " "

" " " "

" " " "

" " " "

" " " "

" " " "

" " " "

" " " "

" " " "

" " " "

" " " "

" " " "

" " " "

" " " "

" " " "

" " " "

" " " "

" " " "

" " " "

" " " "

" " " "

" " " "

" " " "

" " " "

" " " "

" " " "

" " " "

" " " "

" " " "

" " " "

" " " "

" " " "

" " " "

" " " "

" " " "

" " " "

" " " "

" " " "

" " " "

" " " "

" " " "

" " " "

" " " "

" " " "

" " " "

" " " "

" " " "

TRUE AND FULL VALUATIONS

LAND Exclusive of Structures and Improvements	BUILDINGS and Other Structures	MACHINERY Permanently Attached to Real Estate	TOTAL True and Full Value	ASSESSED VALUATIONS						Total Assessed Value as Equalized by the Board of Review	FINAL EQUALIZED VALUE
				RURAL			ALL OTHER				
				Homestead Up to \$4,000 20%	Over \$4,000 and Non-Homestead 33 1/3%	Timber Land Class 3e 20%	Homestead Up to \$4,000 25%	Over \$4,000 and Non-Homestead 40%	MACHINERY Permanently Attached to Real Estate 33 1/3%	Seasonal and Recreational Cabins 33 1/3%	TOTAL ASSESSED VALUE
Dollars	Dollars	Dollars	Dollars	Dollars	Dollars	Dollars	Dollars	Dollars	Dollars	Dollars	Dollars

Plot filed August 8, 1963
valued in Section 36

Cass County, Minnesota, for Taxes for the Year 1963.

VALUATIONS BY SCHOOL DISTRICTS AS EQUALIZED BY DEPARTMENT OF TAXATION

SOLD FOR TAXES	District						Tax Including State Homestead	State Tax on Non-Homestead	SPECIAL TAXES	SPECIAL TAXES	TOTAL TAXES	PAID	WHEN PAID	Number of Receipt	March Settlement 1964	June Settlement 1964	Penalty	November Settlement 1964	Penalty	Collections to First Monday in January 1965	Penalty	Delinquent on First Monday in January 1965	Total Delinquent Tax and Penalty	REMARKS
	No.	No.	No.	No.	No.	No.																		
	Rate	Rate	Rate	Rate	Rate	Rate	Mills	Mills	\$ cts.	\$ cts.	\$ cts.		Month Day Year		\$ cts.	\$ cts.	\$ cts.	\$ cts.	\$ cts.	\$ cts.	\$ cts.	\$ cts.	\$ cts.	
	Dollars	Dollars	Dollars	Dollars	Dollars	Dollars																		

1																								
2																								
3																								
4																								
5																								
6																								
7																								
8																								
9																								
10																								
11																								
12																								
13																								
14																								
15																								
16																								
17																								
18																								
19																								
20																								

Personal

Assessment Roll and Tax List of Real Property in the _____ of _____

Form 50 MILLER-DAVIS CO., MINNEAPOLIS

* Indicate Type of Property: R-Residential, C-Commercial, I-Industrial, U-Utility, F-Farm, L-Lakeshore, T-Timber, M-Mineral

IN WHOSE NAME ASSESSED	DESCRIPTION OF PROPERTY				No. School District	Indicate Homestead Yes or No	Agri. or Semi-Rec. Yes or No	Indicate Type of Property	TRUE AND FULL VALUATIONS																
	SUBDIVISION	Sec. or Lot	Town or Block	Rng.					Number of Acres of Land		LAND Exclusive of Structures and Improvements	BUILDINGS and Other Structures	MACHINERY Permanently Attached to Real Estate	TOTAL True and Full Value	ASSESSED VALUATIONS								TOTAL ASSESSED VALUE	Total Assessed Value as Equalized by the Board of Review	FINAL EQUALIZED VALUE
									Acres	100ths					RURAL				ALL OTHER						
															Homestead Up to \$4,000 20%	Over \$4,000 and Non-Homestead 33 1/3%	Timber Land Class 3e 20%	Homestead Up to \$4,000 25%	Over \$4,000 and Non-Homestead 40%	MACHINERY Permanently Attached to Real Estate 33 1/3%	Seasonal and Recreational Cabins 33 1/3%	TOTAL ASSESSED VALUE			
					Dollars	Dollars	Dollars	Dollars	Dollars	Dollars	Dollars	Dollars	Dollars	Dollars	Dollars	Dollars	Dollars	Dollars							
1																									
2																									
3																									
4																									
5																									
6																									
7																									
8																									
9																									
10																									
11																									
12																									
13																									
14																									
15																									
16																									
17																									
18																									
19																									
20																									

12,092.12

Cass County, Minnesota, for Taxes for the Year 1963.

SOLD FOR TAXES	VALUATIONS BY SCHOOL DISTRICTS AS EQUALIZED BY DEPARTMENT OF TAXATION				Tax Including State Homestead	State Tax on Non-Homestead	SPECIAL TAXES	SPECIAL TAXES	TOTAL TAXES	PAID	WHEN PAID	Number of Receipt	March Settlement 1964	June Settlement 1964	November Settlement 1964	Penalty	Collections to First Monday in January 1965	Penalty	Delinquent on First Monday in January 1965	Total Delinquent Tax and Penalty	REMARKS
	District No.	District No.	District No.	District No.																	
	Rate	Rate	Rate	Rate																	
	Mills	Mills	Mills	Mills																	
	8.119	7.119				8.92															
	Dollars	Dollars	Dollars	Dollars	\$ cts.	\$ cts.	\$ cts.	\$ cts.	\$ cts.	Month Day Year		\$ cts.	\$ cts.	\$ cts.	\$ cts.	\$ cts.	\$ cts.	\$ cts.	\$ cts.	\$ cts.	
	H 15,750	6700.12	82,761																		
	77.1 84,846	89,924	174,290																		
	100,596	156,367.25	256,963																		
		152,925	259,521																		
			1190	23448.22																	
			710	40501.22	155866																

63,947.44 155,866 65,508.10

SHADY LAKE
SHINGOBE KNOLL
BLANCH ACRES
V BELFORD'S 1st ADD'
SHINGOBE ISLAND
FAIR POINT
BAEYSON'S POINT

Personal