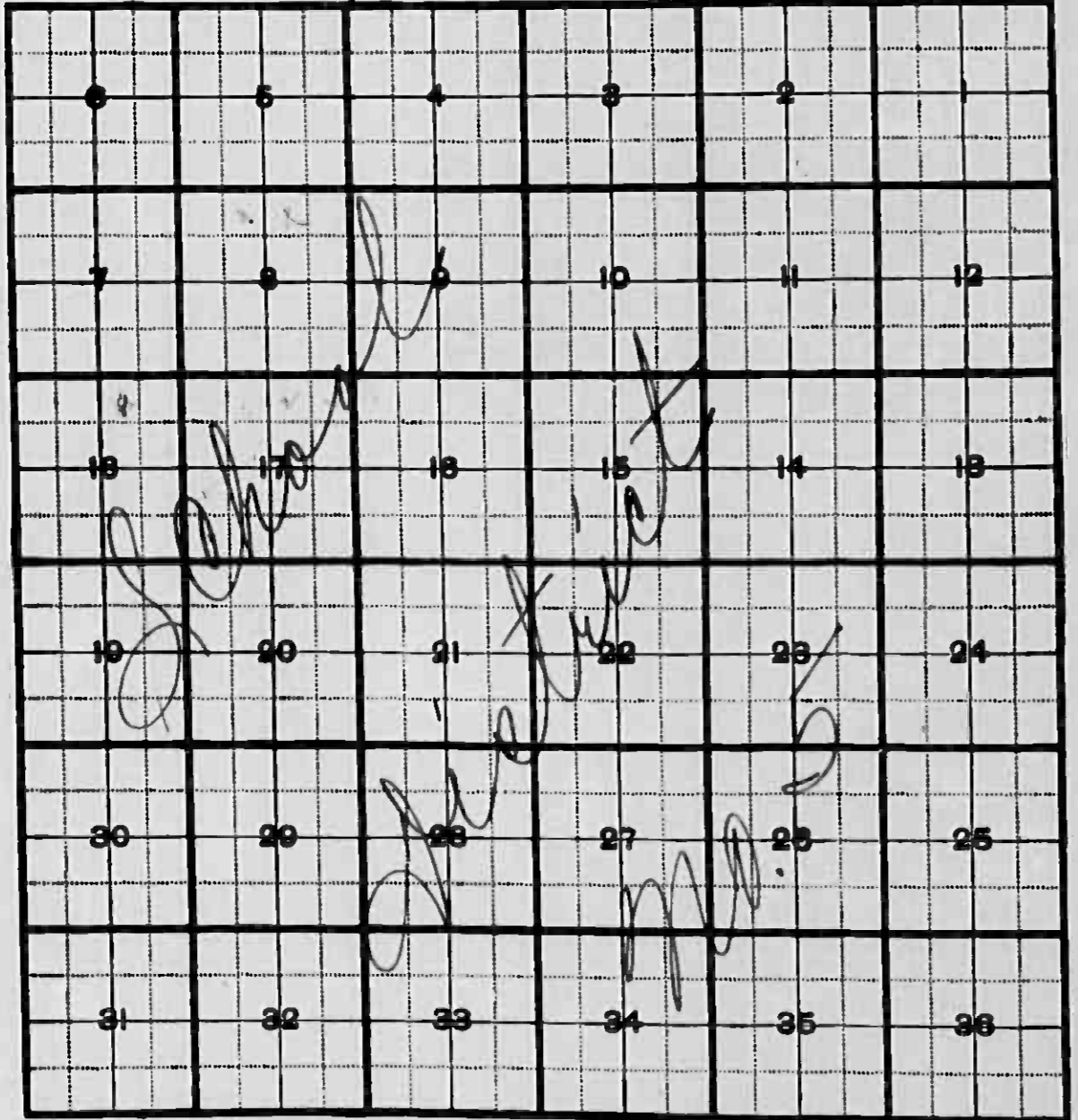


INDEX TO SECTIONS

SECTION	PAGE
Section 1	
" 2	
" 3	
" 4	
" 5	
" 6	
" 7	
" 8	
" 9	
" 10	
" 11	
" 12	
" 13	
" 14	
" 15	
" 16	
" 17	
" 18	
" 19	
" 20	
" 21	
" 22	
" 23	
" 24	
" 25	
" 26	
" 27	
" 28	
" 29	
" 30	
" 31	
" 32	
" 33	
" 34	
" 35	
" 36	

For Convenience of Auditor in Showing Boundaries of School Districts

Township No. 141-142 Range No. 31 Mer. P.M.



SUMMARY OF TAX COLLECTION

Original Levy	- - - - -	\$	.....
Additions	- - - - -	\$	<u>          </u>
			\$
Abatements	- - - - -	\$	<u>          </u>
			\$
<b>COLLECTIONS</b>			
March Settlement	- - - - -	\$	.....
June Settlement	- - - - -	\$	.....
November Settlement	- - - - -	\$	.....
January Settlement	- - - - -	\$	<u>          </u>
			\$
Over Collected	- - - - -	\$	.....
Under Collected	- - - - -	\$	.....
Delinquent	- - - - -	\$	<u>          </u>
			\$
Total	- - - - -	\$	.....

Treasurer's Office, Cass County, Minnesota

RECEIVED this, the first Monday (being the fourth day) of January, A. D. 1943, of L. C. Peterson, Auditor of said County, Minnesota, the Tax List of all Taxable Real and Personal Property in the Township of Shingobee in said County for the year A. D. 1942, as specified above and amounting to Eleven thousand three hundred nine & 89/100

W. J. McKeown, County Treasurer

December 31 1942

Office of County Treasurer, Cass County, Minnesota

To L. C. Peterson, County Auditor:

Sir:—I herewith return to you the Tax List for the Township of Shingobee in said County for the year 1942, heretofore received from you. Certify that I have compared the same with the duplicate receipts in your office, and have written opposite the amount of each tax so received the words "First Quarter Paid", "Second Quarter Paid", "Third Quarter Paid" or "Paid in full" as the case may be, and the number of my receipt given in discharge of said tax, and each tract or lot of real property against which the taxes remain unpaid is delinquent for said year.

Yours respectfully, W. J. McKeown, County Treasurer

Auditor's Office, Cass County, Minnesota

I, Auditor of said County, and State of Minnesota, do hereby certify that the following is a correct list of the Taxes levied on the Real and Personal Property in the Township of Shingobee in said County for the year 1942. WITNESS my hand and official seal, the 31 day of December 1942.

(SEAL) County Auditor

Auditor's Office, Cass County, Minnesota

I hereby certify that on the first Monday in January 1943, I received of L. C. Peterson, County Treasurer, the Tax List of the Township of Shingobee in said County for the year 1942 that I have compared the said list with the Statements received for by said Treasurer, which are on file in my office, and that each tract or lot of real property therein against which the taxes, or any part thereof, remains unpaid are delinquent for said year.

(SEAL) County Auditor







COLLECTIONS OF TAXES OF 1942

Township OF *Shingobee*

CASS COUNTY, MINNESOTA

FUNDS	MARCH SETTLEMENT 1942	JUNE SETTLEMENT 1943	NOV. SETTLEMENT 1943	Amount Collected from Nov. 19, 1943 to First Monday in Jan. 1944	REDUCTIONS	Cancelled Forfeited	Total Reductions and Collected	BALANCE UNCOLLECTED	ADDITIONS	Taxes Overpaid	Total Uncollected to First Monday in January, 1944
State Revenue.											
State School.											
Teachers Insurance.											
State Debt--Non-Homestead.	5363	22667	6214	502							
State Debt--Homestead.	1303	7218	2306	129							
County Revenue.	22529	121950	38954	1839							
County Road and Bridge.	3898	18517	5915	279							
County Welfare.	27192	148179	47332	2234							
County Bond and Interest.	13576	73977	23630	1116							
Town Revenue.	1646	8967	2864	135							
Town Road and Bridge.	6822	35868	11457	541							
Town Drag.	833	4483	1432	68							
Town State Loan.	1646	8967	2864	135							
<i>Bire</i>	3291	17934	5729	270							
<i>Phone</i>	853	4483	2432	68							
<i>Cemetery</i>											
School Local 1 Mill.	823	4484	1434	67							
School Special.	21424	82562	25544	1872							
School State Loan.											
<i>Deficiency</i>	11355	61871	19763	933							
<i>C. B.</i>	1645	8967	2865	136							
<b>Total</b>	<b>103291</b>	<b>631094</b>	<b>199735</b>	<b>10304</b>							
Money and Credits.	10249										
	133540	631094	199735	10304	21895	6734			8545	682	137214

	School District No.	LOCAL 1 MILL	SPECIAL	STATE LOAN	Deficiency	Cap. Outlay	TOTALS
MARCH SETTLEMENT	5	823	21424		11355	1645	35247
	Totals	823	21424		11355	1645	
JUNE SETTLEMENT	5	4484	82562		61871	8967	157884
	Totals	4484	82562		61871	8967	157884
NOVEMBER SETTLEMENT	5	1434	25544		19763	2865	49606
	Totals	1434	25544		19763	2865	49606
NOVEMBER to JANUARY	5	67	1872		933	136	3008
	Totals	67	1872		933	136	3008
ADDITIONS							
	Totals						
REDUCTIONS							
	Totals						































































































Tax List of Real Property in the Town of Shingobee

IN WHOSE NAME ASSESSED	TO WHOM TRANSFERRED	SUB-DIVISION	Sec. or Lot	Town or Block	Range	NO. OF ACRES		No. of School District	VALUATION BY SCHOOL DISTRICTS					SOLD FOR TAXES	Rate and Tax Less Homestead Exemption	State Tax on Non-Homestead	TOTAL GENERAL TAXES	SPECIAL ASSESSMENTS					TOTAL TAXES	PAID	WHEN PAID	Number of Receipt	March Settlement 1943	June Settlement 1943	Penalty	November Settlement 1943	Penalty	Collections to First Monday in January 1944	Penalty	Delinquent on First Monday in January 1944	Total Delinquent Tax and Penalty	REMARKS										
						Acres	100s		District No. 1	District No. 2	District No. 3	District No. 4	District No. 5					District No. 6	District No. 7	District No. 8	District No. 9	District No. 10															District No. 11	District No. 12	District No. 13	District No. 14	District No. 15	District No. 16	District No. 17	District No. 18	District No. 19	District No. 20
						Dollars	Dollars		Dollars	Dollars	Dollars	Dollars	Dollars					Dollars	Dollars	Dollars	Dollars	Dollars															Dollars	Dollars	Dollars	Dollars	Dollars	Dollars	Dollars	Dollars	Dollars	Dollars
U. S. of America		NE 1/4 of NE 1/4						5																																						
U. S. of America		NW 1/4 of NE 1/4																																												
U. S. of America		SW 1/4 of NE 1/4																																												
U. S. of America		SE 1/4 of NE 1/4																																												
U. S. of America		NE 1/4 of NW 1/4																																												
F. A. Norving	Hugh & Ruth Norton	NW 1/4 of NW 1/4				40					14	48			634																															
		SW 1/4 of NW 1/4				40					14	48			634																															
	Hugh V. Norton	SE 1/4 of NW 1/4 Lot 2				28.75					14	48			634																															
		NE 1/4 of SW 1/4																																												
		NW 1/4 of SW 1/4 1				37					14	56			740																															
		SW 1/4 of SW 1/4																																												
		SE 1/4 of SW 1/4																																												
U. S. of America		NE 1/4 of SE 1/4																																												
U. S. of America		NW 1/4 of SE 1/4 3																																												
U. S. of America		SW 1/4 of SE 1/4 4 head by																																												
U. S. of America		SE 1/4 of SE 1/4																																												
						145.75						200	4		2642																															

7  
-  
10  
11  
S  
Q  
Sta  
Sta  
U.  
m.  
D.  
A.  
m.  
G.

6 2nd Half Paid NOV 14 1943  
 7 1st Half Paid JUN 1 1943  
 8 2nd Half Paid NOV 12 1943  
 9 1st Half Paid JUN 1 1943  
 11 2nd Half Paid NOV 12 1943  
 12 1st Half Paid JUN 1 1943











































































































































































IN WHOSE NAME ASSESSED	TO WHOM TRANSFERRED	SUB-DIVISION	Sec. or Lot	Town or Block	Range	NO. OF ACRES	No. of School District	VALUATION BY SCHOOL DISTRICTS					SOLD FOR TAXES	Rate and Tax Less Homestead Exemption	State Tax on Non-Homestead	TOTAL GENERAL TAXES	SPECIAL ASSESSMENTS					TOTAL TAXES	PAID	WHEN PAID	Number of Receipts	March Settlement 1943	June Settlement 1943	Penalty	November Settlement 1943	Penalty	Collections to First Monday in January 1944	Penalty	Delinquent on First Monday in January 1944	Total Delinquent Tax and Penalty	REMARKS			
								VALUATION	District No. 5	District No. 1	District No. 2	District No. 3					Rate	Rate	Rate	Rate	Rate																	
								Dollars	Dollars	Dollars	Dollars	Dollars					Mills	Mills	Mills	Mills	Mills																	
U. S. of America		NE 1/4 of NE 1/4				29.14231	5																															
U. S. of America		NW 1/4 of NE 1/4																																				
Stephen Gruber		SW 1/4 of NE 1/4				30.90					4	60		794																								
Lee L. Champlin		SE 1/4 of NE 1/4				28.40					4	56		740																								
Harry Paddock		SE 1/4 of NE 1/4 of NW 1/4				10					4	20		264																								
U. S. of America		NE 1/4 of NW 1/4 + NE 1/4 of NW 1/4																																				
U. S. of America		NW 1/4 of NW 1/4																																				
U. S. of America		SW 1/4 of NW 1/4																																				
Stephen Gruber		SE 1/4 of NW 1/4				32.60					4	66		874																								
		NE 1/4 of SW 1/4				34.50					4	68		900																								
U. S. of America		NW 1/4 of SW 1/4																																				
U. S. of America		SW 1/4 of SW 1/4																																				
Stephen Gruber		SE 1/4 of SW 1/4				34.30					4	68		900																								
Hattie & Alfred Oberly		NE 1/4 of SE 1/4				28.70					4	125		1654																								
Stephen Gruber		NW 1/4 of SE 1/4				32.20					4	217		2870																								
		SW 1/4 of SE 1/4				32.20					4	64		846																								
Andrew J. Oberly		SE 1/4 of SE 1/4				29.10					4	58		768																								
						293.90						802	14	10610																								

10-31

Book 1

10-31

10-31

10-31

10-31

10-31

10-31













































































































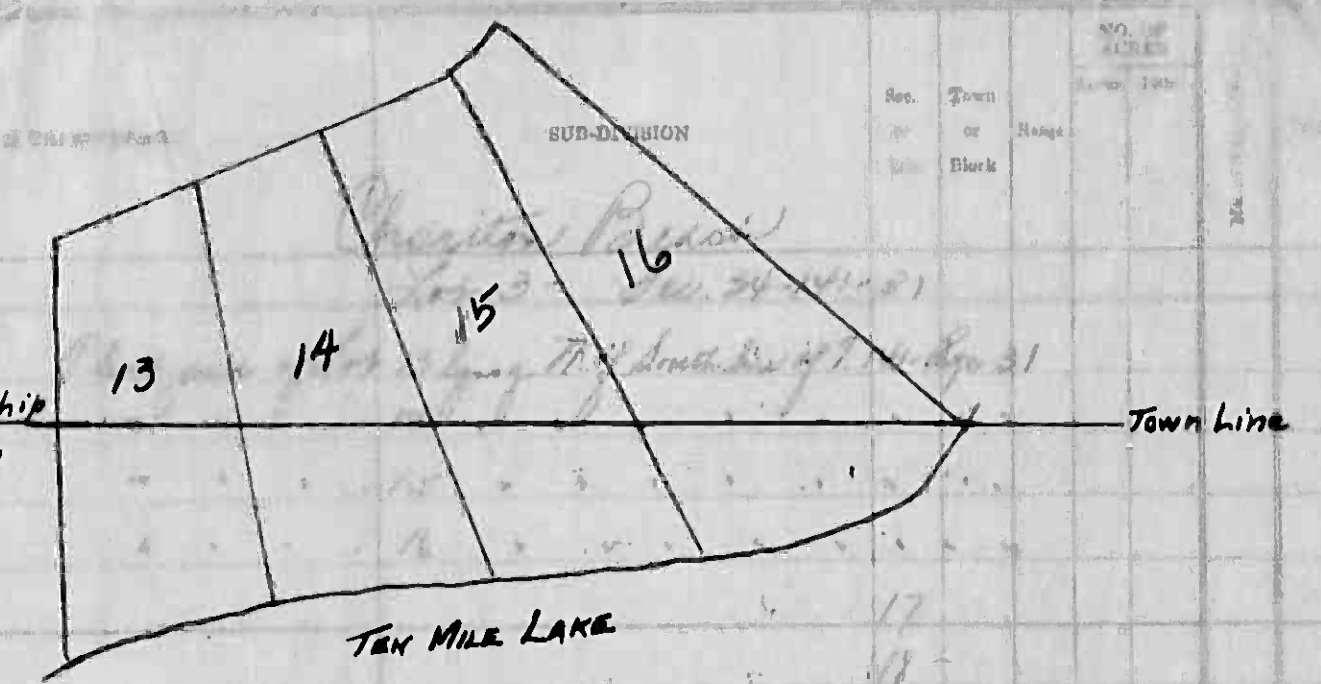


Tax List of Real Property in the Town of Shingobee

IN WHOSE NAME ASSESSED

William Eikenberg

Shingobee Township  
Hiram Township



Lot 13-14-15-16 CHARITON BEACH

No.	VALUATION BY SCHOOL DISTRICTS	SOLD FOR TAXES	Rate and Tax Less Homestead Exemption	State Tax on Non-Homestead	TOTAL GENERAL TAXES	SPECIAL ASSESSMENTS				TOTAL TAXES	PAID	WHEN PAID	Number of Receipt	March Settlement 1943	June Settlement 1943	Penalty	November Settlement 1943	Penalty	Collections to First Monday in January 1944	Penalty	Delinquent on First Monday in January 1944	Total Delinquent Tax and Penalty	REMARKS												
						District No.	District No.	District No.	District No.															Dollars	cts.	Dollars	cts.	Dollars	cts.	Dollars	cts.	Dollars	cts.	Dollars	cts.
						Rate	Rate	Rate	Rate																										
1	4		58	02	60						1 PAID IN FULL	JUN 18 1943																							
2	6		88	02	90						2 PAID IN FULL	JUN 18 1943																							
3	8		118	02	120						3 PAID IN FULL	JUN 18 1943																							
4	10		148	02	150						4 PAID IN FULL	JUN 18 1943																							
5	20		294	02	296						5 PAID IN FULL	JUN 18 1943																							
6	20		294	02	296						6 PAID IN FULL	JUN 18 1943																							
7	20		294	02	296						7 PAID IN FULL	JUN 18 1943																							
8	20		294	02	296						8 PAID IN FULL	JUN 18 1943	6277	3452																					
9	20		294	02	296						9 PAID IN FULL	JUN 18 1943																							
10	20		294	02	296						10 PAID IN FULL	JUN 18 1943																							
11	20		294	02	296						11 PAID IN FULL	JUN 18 1943																							
12	20		294	02	296						12 PAID IN FULL	JUN 18 1943																							
13	20		294	02	296						13 PAID IN FULL	JUN 18 1943																							
14	8		118	02	120						14 PAID IN FULL	JUN 18 1943																							
15	8		118	02	120						15 PAID IN FULL	JUN 18 1943																							
16																																			
17																																			
18																																			
19																																			
20																																			
Grand Total			224	158	382																														

Grand Total 224 158 382

3452  
2296.22



