

Assessment & Tax List - 1967

Shingobee

Assessment of

COLLECTIONS OF TAXES OF 1961

2000 OF *Stingobee*

CASS COUNTY, MINNESOTA

FUNDS	MARCH SETTLEMENT 1962	JUNE SETTLEMENT 1962	NOV. SETTLEMENT 1962	Amount Collected from Nov. 1962 to First Monday in Jan. 1963	REDUCTIONS	Total Reductions and Collected	BALANCE UNCOLLECTED	ADDITIONS	Total Uncollected to First Monday in January, 1963
State-Non-Homestead,	12632	64162	27648	1233					
State-Homestead,	10952	67047	29772	1663					
County Revenue,	102675	384715	176519	9628					
County Road and Bridge,	55711	11456	95778	5224					
County Welfare,	159611	605824	274404	14966					
County Road and Interest,	3036	11524	5220	285					
C. H. Bldg.	5571	21146	4578	522					
Agri. Bldg.	1393	5286	2394	131					
Ch. Def.	1838	6779	3161	172					
Town Revenue,	5571	21146	9578	523					
Town Road and Bridge,	27855	105727	47889	2612					
Town State Loan,									
Fire	8357	21146	14367	783					
Cem.	5571	31719	9578	523					
School Local 1 Mill,									
School Special,	127637	412659	193235	10759					
School State Loan,									
Deficiency	79805	302912	137201	7483					
Tuition C.O.	108497	411812	186528	10174					
Transportation B & D	11755	44617	20209	1102					
PERA	9053	34362	15564	849					
Bldg.	36184	137342	62208	3393					
Well Def.	30334	115139	52151	2844					
PERA	15794	59949	27153	1481					
	819832	3081669	1400335	71350					

	SCHOOL DISTRICT NO.	LOCAL 1 MILL	SPECIAL	STATE LOAN	Deficiency	C.O.	B & D	PERA	Bldg.	TOTALS
MARCH SETTLEMENT	School District No.									
	119a		11639		13338	18134	1965	1513	6048	52637
	1197a		115978		66467	90363	9790	7540	30136	320294
	Totals		127637		79805	108497	11755	9053	36184	372931
JUNE SETTLEMENT	School District No.									
	119a		115984		132917	180702	19578	15078	60265	524524
	1197a		296675		169795	231110	25039	19284	77077	817180
	Totals		412659		302912	411812	44617	34362	137342	1343704
NOVEMBER SETTLEMENT	School District No.									
	119a		46211		52957	71996	7800	6007	24011	208982
	1197a		147024		84244	114532	12409	9557	38197	405963
	Totals		193235		137201	186528	20209	15564	62208	614945
NOVEMBER to JANUARY	School District No.									
	119a		2300		2636	3584	388	299	1175	10402
	1197a		8459		4847	6590	714	550	2198	23358
	Totals		10759		7483	10174	1102	849	3393	33760
ADDITIONS	School District No.									
	Totals									
REDUCTIONS	School District No.									
	Totals									

Real Estate

Stingobee Island
Chippewa Lake
Point Park
Sawtooth
Kabeokona
Ojibway
Wa-Ba-J

Assessment Roll and Tax List of Real Property in the Town of Shingobee

Cass County, Minnesota, for Taxes for the Year 1961.

FORM 30 MILLER-DAVIS CO., MINNEAPOLIS

* Indicate Type of Property: R-Residential, C-Commercial, I-Industrial, U-Utility, F-Farm, L-Lakeshore, T-Timber, M-Mineral

Main table with columns: IN WHOSE NAME ASSESSED, DESCRIPTION OF PROPERTY, TRUE AND FULL VALUATIONS, ASSESSED VALUATIONS, VALUATIONS BY SCHOOL DISTRICTS AS EQUALIZED BY DEPARTMENT OF TAXATION, TAXES, PAID, WHEN PAID, Number of Receipts, March Settlement 1962, June Settlement 1962, November Settlement 1962, Collections to First Monday in January 1963, Delinquent on First Monday in January 1963, Total Delinquent Tax and Penalty, REMARKS.

(CONT ON NEXT PAGE)

163.29

2183 74=2207 23042 82612 1304 106958 2787 849=3636 105654

294 15

21835

10 68

Shingobee Island Point Surtles Kabokona Ojibway Ma-Ba-Ma-Bo Bay

Assessment Roll and Tax List of Real Property in the Town of Shingobee

Cass County, Minnesota, for Taxes for the Year 1961.

* Indicate Type of Property: R-Residential, C-Commercial, I-Industrial, U-Utility, F-Farm, L-Lakeshore, T-Timber, M-Mineral

Table with columns: IN WHOSE NAME ASSESSED, DESCRIPTION OF PROPERTY, TRUE AND FULL VALUATIONS, VALUATIONS BY SCHOOL DISTRICTS AS EQUALIZED BY DEPARTMENT OF TAXATION, TAXES, PAID, WHEN PAID, Number of Receipt, March Settlement, June Settlement, November Settlement, Collections to First Monday in January 1963, Delinquent on First Monday in January 1963, Total Delinquent Tax and Penalty, REMARKS.

Real 141

142-31

Shingobee

Island

Point

Sorters

01-Jan-61

Ma-Ba-Ma-Ma Bay

Assessment Roll and Tax List of Real Property in the

Dunn of Shingobee

* Indicate Type of Property: R-Residential, C-Commercial, I-Industrial, U-Utility, F-Farm, L-Lakeshore, T-Timber, M-Mineral

Cass County, Minnesota, for Taxes for the Year 1961.

IN WHOSE NAME ASSESSED	SUBDIVISION	Sec. of Lot	Town or Block	Number of Acres of Land	No. School District	Indicate Homestead Yes or No	Agricultural Rec. Yes or No	Indicate Type of Property	TRUE AND FULL VALUATIONS								FINAL EQUALIZED VALUE	SOLD FOR TAXES	VALUATIONS BY SCHOOL DISTRICTS AS EQUALIZED BY DEPARTMENT OF TAXATION							SPECIAL TAXES	SPECIAL TAXES	TOTAL TAXES	PAID	WHEN PAID	Number of Receipt	March Settlement 1962	June Settlement 1962	November Settlement 1962	Penalty	Collections to First Monday in January 1963	Penalty	Delinquent on First Monday in January 1963	Total Delinquent Tax and Penalty	REMARKS										
									RURAL			ALL OTHER							TOTAL ASSESSED VALUE	Total Assessed Value as Equalized by the Board of Review	District No.	District No.	District No.	District No.	District No.																District No.	Tax including State Homestead	State Tax on Non-Homestead	Rate	Rate	Rate	Rate	Rate	Rate	Rate
									Homestead Up to \$4,000 20%	Over \$4,000 and Non-Homestead 33 1/3%	Timber Land Class 3e 20%	Homestead Up to \$4,000 25%	Over \$4,000 and Non-Homestead 40%	Machinery Permanently Attached to Real Estate 33 1/3%	Seasonal and Recreational Cabins 33 1/3%	Dollars																																		
John L. Olson	1 PART OF GOV'T LOT B	21250-5	14/31		119	NO	YES	L																																										
J. H. Schaper	2 PART OF GOV'T LOT B	21250-6				NO	"	"																																										
Melvin Edwards + Alberta B. Engle	3 PART OF GOV'T LOT B	21250-7				NO	"	"																																										
James M. + Gladys + house	4 PART OF GOV'T LOT B	21250-8				NO	"	"																																										
Erin Rohrer	5 PART OF GOV'T LOT B	21250-8				NO	NO	"																																										
Maxwell O. + Vera Louisa Kruus	7 PART OF GOV'T LOT B	21250-9				NO	YES	R																																										
Ronald R. + Mildred M. Johnson	8 PART OF GOV'T LOT B	21250-10				NO	"	"																																										
James P. + Mabel M. + house	9 PART OF GOV'T LOT B	21250-A	(100 ft)			NO	NO	L		45																																								
Lawrence H. + Lydia May Freese	10 PART OF GOV'T LOT B	21250-11				NO	YES	R																																										
Hille Gold + Gene Ingorsburg + Southend	11 PART OF GOV'T LOT B	21250-12				NO	NO	L																																										
Raymond H. + Josephine + Andrick	12 PART OF GOV'T LOT B	21250-13				NO	YES	R																																										
"	13 PART OF GOV'T LOT B	21250-14				NO	"	L																																										
"	14 PART OF GOV'T LOT B	21250-15				NO	"	L																																										
Edward J. + Agnes L. + house	15 PART OF GOV'T LOT B	21250-16				NO	NO	L																																										
J. R. + Violet A. + house	17 PART OF GOV'T LOT B	21250-17	(100 ft)	OK		NO	YES	R																																										
Russell S. + Vera M. + house	19 PART OF GOV'T LOT B	21250-18				NO	YES	L																																										
Henry G. + Leona J. + house	20 PART OF GOV'T LOT B	21250-19				NO	YES	L																																										

REC-1

142-31-11 Search Shingobee Island Chippewa Pines Park Forest Lakebena Ojibway

Twp. Rd. - Not on line

Sariff owns to R.R. on both sides of Cartway Has a cabin

5th Lake

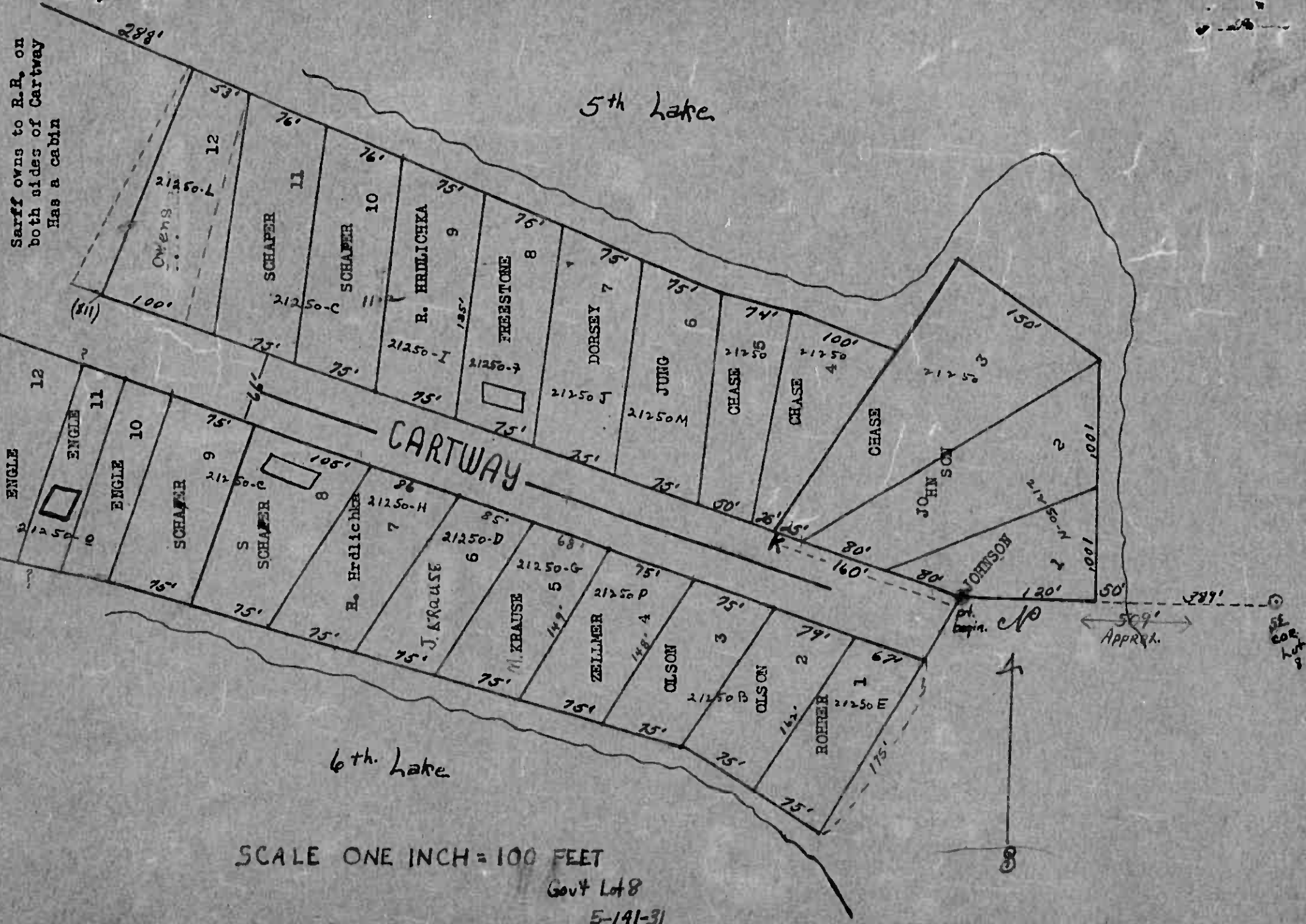
6th Lake

SCALE ONE INCH = 100 FEET

Govt Lot 8

5-141-31

Part of Outlot A - not shown on map



Assessment Roll and Tax List of Real Property in the

Town of Lingohle

* Indicate Type of Property: R-Residential, C-Commercial, A-Industrial, U-Utility, F-Farm, L-Lakeshore, T-Timber, M-Mineral

Cass County, Minnesota, for Taxes for the Year 1961.

IN WHOSE NAME ASSESSED	DESCRIPTION OF PROPERTY				No. School District	Indicate Home-Stead Yes or No	Agricultural Yes or No	Indicate Type of Property	TRUE AND FULL VALUATIONS							TOTAL ASSESSED VALUE	Total Assessed Value as Equalized by the Board of Review	FINAL EQUALIZED VALUE	
	SUBDIVISION	Sec. of Lot	Town or Block	Number of Acres of Land					LAND Exclusive of Structures and Improvements	BUILDINGS and Other Structures	MACHINERY Permanently Attached to Real Estate	TOTAL True and Full Value	ASSESSED VALUATIONS						
													RURAL	ALL OTHER					TOTAL ASSESSED VALUE
<i>Lourence & Roy Lewis</i>	NE 1/4 of NE 1/4	10	14131	40															
"	NW 1/4 of NE 1/4			40															
"	SW 1/4 of NE 1/4			40															
"	SE 1/4 of NE 1/4			40															
<i>H. H. & Irma Mullroy</i>	NE 1/4 of NW 1/4			40															
"	NW 1/4 of NW 1/4			40															
U. S. of America	SW 1/4 of NW 1/4																		
U. S. of America	SE 1/4 of NW 1/4																		
<i>Leonard M. & Jacqueline G. Dissell</i>	NE 1/4 of SW 1/4 W. of S. R. H. # 80			15															
U. S. of America	NE 1/4 of SW 1/4 LESS 15 ACS																		
U. S. of America	NW 1/4 of SW 1/4																		
U. S. of America	SW 1/4 of SW 1/4																		
U. S. of America	SE 1/4 of SW 1/4																		
U. S. of America	NE 1/4 of SE 1/4																		
U. S. of America	NW 1/4 of SE 1/4																		
U. S. of America	SW 1/4 of SE 1/4																		
U. S. of America	SE 1/4 of SE 1/4																		
				255															

SOLD FOR TAXES	VALUATIONS BY SCHOOL DISTRICTS AS EQUALIZED BY DEPARTMENT OF TAXATION						Tax Including State Homestead	State Tax on Non-Homestead	SPECIAL TAXES	SPECIAL TAXES	TOTAL TAXES	PAID	WHEN PAID	Number of Receipt	March Settlement 1962	June Settlement 1962	Penalty	November Settlement 1962	Penalty	Collections to First Monday in January 1963	Penalty	Delinquent on First Monday in January 1963	Total Delinquent Tax and Penalty	REMARKS
	District No.	District No.	District No.	District No.	District No.	District No.																		
	Rate	Rate	Rate	Rate	Rate	Rate																		
1																								
2																								
3																								
4																								
5																								
6																								
7																								
8																								
9																								
10																								
11																								
12																								
13																								
14																								
15																								
16																								
17																								
18																								
19																								
20																								

142-31
 Sumner
 Desch
 Island
 Chippewa
 Point
 Suptons
 Kabokoa
 Ojibway
 Ma-Ba-Ri-So Bay

Assessment Roll and Tax List of Real Property in the Town of Shingobee

Cass County, Minnesota, for Taxes for the Year 1961.

FORM 50 MILLER-DAVIS CO., MINNEAPOLIS * Indicate Type of Property: R-Residential, C-Commercial, I-Industrial, U-Utility, F-Farm, L-Lakeshore, T-Timber, M-Mineral

Table with columns: IN WHOSE NAME ASSESSED, SUBDIVISION, No. of Lot, Town or Block, Ring, Number of Acres of Land, Acreage, School District, Indicate Homestead, Indicate Season, Indicate Type of Property, TRUE AND FULL VALUATIONS (LAND, BUILDINGS, MACHINERY, TOTAL), ASSESSED VALUATIONS (RURAL, ALL OTHER, MACHINERY, Seasonal and Recreational Cabins, TOTAL ASSESSED VALUE), Total Assessed Value as Equalized by the Board of Review, FINAL EQUALIZED VALUE.

(CONT NEXT PAGE)

Table with columns: SOLD FOR TAXES, VALUATIONS BY SCHOOL DISTRICTS AS EQUALIZED BY DEPARTMENT OF TAXATION (District No., Rate, Mills), Tax Including State Homestead, State Tax on Non-Homestead, SPECIAL TAXES, TOTAL TAXES, PAID, WHEN PAID, Number of Receipt, March Settlement, June Settlement, Penalty, November Settlement, Penalty, Collections to First Monday in January 1963, Delinquent on First Monday in January 1963, Total Delinquent Tax and Penalty, REMARKS.

Vertical text on the right edge of the page, including 'Shingobee Island Point' and other location names.

IN WHOSE NAME ASSESSED		DESCRIPTION OF PROPERTY				School District %	Indicate Home Yes or No	Agricultural Rec Yes or No	Indicate Type of Property	TRUE AND FULL VALUATIONS					ASSESSED VALUATIONS						FINAL EQUALIZED VALUE
		SUBDIVISION	Sec. or Lot	Town or Block	Number of Acres of Land					LAND Exclusive of Structures and Improvements	BUILDINGS and Other Structures	MACHINERY Permanently Attached to Real Estate	TOTAL True and Full Value	RURAL		ALL OTHER		MACHINERY Permanently Attached to Real Estate	Seasonal and Recreational Cabins	TOTAL ASSESSED VALUE	
				Acres 100ths	Dollars	Dollars	Dollars	Dollars	Dollars	Dollars	Dollars	Dollars	Dollars	Dollars	Dollars	Dollars	Dollars				
State of Minnesota	1	Govt Lot 2	14	14/31	119																
<i>Wheeler Lbr. Bridge & Supply Co.</i>	2	GOVT LOT 3		3703																	
U. S. of America	3	SE 1/4 of SW 1/4																			
U. S. of America	4	SE 1/4 of SW 1/4																			
U. S. of America	5	GOVT LOT 1																			
U. S. of America	6	NE 1/4 of SW 1/4																			
U. S. of America	7	NE 1/4 of SW 1/4																			
U. S. of America	8	SW 1/4 of NW 1/4																			
U. S. of America	9	SW 1/4 of NW 1/4																			
U. S. of America	10																				
U. S. of America	11	NE 1/4 of SW 1/4																			
U. S. of America	12	NW 1/4 of SW 1/4																			
U. S. of America	13	SW 1/4 of SW 1/4																			
U. S. of America	14	SE 1/4 of SW 1/4																			
U. S. of America	15																				
U. S. of America	16	NE 1/4 of SE 1/4																			
U. S. of America	17	NW 1/4 of SE 1/4																			
U. S. of America	18	SW 1/4 of SE 1/4																			
U. S. of America	19	SE 1/4 of SE 1/4																			
	20																				

SOLD FOR TAXES	VALUATIONS BY SCHOOL DISTRICTS AS EQUALIZED BY DEPARTMENT OF TAXATION						Tax Including State Homestead	State Tax on Non-Homestead	SPECIAL TAXES	SPECIAL TAXES	TOTAL TAXES	PAID	WHEN PAID	Number of Receipt	March Settlement 1962	June Settlement 1962	Penalty	November Settlement 1962	Penalty	Collections to First Monday in January 1963	Penalty	Delinquent on First Monday in January 1963	Total Delinquent Tax and Penalty	REMARKS
	District No. Rate	District No. Rate	District No. Rate	District No. Rate	District No. Rate	District No. Rate																		
1																								
2	SOLD FOR TAXES							100	2714	92	2806													
3																								
4																								
5																								
6																								
7																								
8																								
9																								
10																								
11																								
12																								
13																								
14																								
15																								
16																								
17																								
18																								
19																								
20																								

142-31
Shingobee
Island
Point
Kahokoa
Ojibway
Ka-Ba-Ka-Ba Bay

Assessment Roll and Tax List of Real Property in the

Town of Shingobee

Cass County, Minnesota, for Taxes for the Year 1961.

Form 30-MILLER-DAVIS CO., MINNEAPOLIS

IN WHOSE NAME ASSESSED	DESCRIPTION OF PROPERTY	SUBDIVISION	Sec. or Lot	Town or Block	Rng.	Number of Acres of Land	No. School District	Indicate Home Stead or No	Agriculture or Recre. or No	Indicate Type of Property	TRUE AND FULL VALUATIONS						FINAL EQUALIZED VALUE	SOLD FOR TAXES	VALUATIONS BY SCHOOL DISTRICTS AS EQUALIZED BY DEPARTMENT OF TAXATION						PAID	WHEN PAID	Number of Receipt	March Settlement 1962	June Settlement 1962	November Settlement 1962	Penalty	Collections to First Monday in January 1963	Penalty	Delinquent on First Monday in January 1963	Total Delinquent Tax and Penalty	REMARKS																					
											LAND EXCLUSIVE OF STRUCTURES AND IMPROVEMENTS		BUILDINGS AND OTHER STRUCTURES	MACHINERY Permanently Attached to Real Estate	TOTAL True and Full Value	RURAL			ALL OTHER		MACHINERY Seasonal and Recreational Cabins	Seasonal and Recreational Cabins	TOTAL ASSESSED VALUE	Total Assessed Value as Equalized by the Board of Review													District No.	District No.	District No.	District No.	District No.	District No.	Tax including State Homestead	State Tax on Non-Homestead	SPECIAL TAXES	SPECIAL TAXES	TOTAL TAXES		Month	Day	Year						
											Dollars	Dollars	Dollars	Dollars	Dollars	Dollars			Dollars	Dollars	Dollars	Dollars	Dollars	Dollars													Dollars	Dollars	Dollars	Dollars	Dollars	Dollars	Dollars	Dollars	Dollars	Dollars	Dollars	Dollars	Dollars	Dollars	Dollars	Dollars	Dollars	Dollars	Dollars	Dollars	Dollars
U. S. of America		N 1/2 of N 1/4		1514131			119																																																		
U. S. of America		N W 1/4 of N E 1/4																																																							
U. S. of America		S W 1/4 of N E 1/4																																																							
<i> Axel C. & Edna M. Mortenson </i>		S E 1/4 of N E 1/4 LESS 2 ACS.				38			NO YES T																																																
State of Minnesota		2 ACS. of S E 1/4 of N E 1/4																																																							
U.S. of America		N E 1/4 of N E 1/4																																																							
U.S. of America		N W 1/4 of N W 1/4																																																							
U.S. of America		S E 1/4 of N W 1/4																																																							
U.S. of America		S E 1/4 of S E 1/4																																																							
U.S. of America		N E 1/4 of S E 1/4																																																							
U.S. of America		N W 1/4 of S E 1/4																																																							
U.S. of America		S W 1/4 of S E 1/4																																																							
U.S. of America		S E 1/4 of S E 1/4																																																							

142-51
Shingobee
Island
Point
Kabokona
Ojibway
In-Ba-De-De Bay

* Indicate Type of Property: R-Residential, C-Commercial, I-Industrial, U-Utility, F-Farm, L-Lakeshore, T-Timber, M-Mineral

Table with columns: IN WHOSE NAME ASSESSED, DESCRIPTION OF PROPERTY, TRUE AND FULL VALUATIONS, ASSESSED VALUATIONS, and FINAL EQUALIZED VALUE.

Table with columns: SOLD FOR TAXES, VALUATIONS BY SCHOOL DISTRICTS AS EQUALIZED BY DEPARTMENT OF TAXATION, Tax including State Homestead, State Tax on Non-Homestead, SPECIAL TAXES, TOTAL TAXES, PAID, WHEN PAID, Number of Receipt, March Settlement 1962, June Settlement 1962, November Settlement 1962, Penalty, Collections to First Monday in January in 1963, Delinquent on First Monday in January in 1963, Total Delinquent Tax and Penalty, REMARKS.

Side margin text containing names and addresses: 142-31, Springtree, Shakopee, Springtree, Shakopee, Springtree, Shakopee, Springtree, Shakopee.

Assessment Roll and Tax List of Real Property in the

Town of Shingbee

Cass County, Minnesota, for Taxes for the Year 1961.

IN WHOSE NAME ASSESSED	DESCRIPTION OF PROPERTY				TRUE AND FULL VALUATIONS									ASSESSED VALUATIONS		VALUATIONS BY SCHOOL DISTRICTS AS EQUALIZED BY DEPARTMENT OF TAXATION											REMARKS												
	SUBDIVISION	Sec. or Lot	Town or Block	Number of Acres of Land	LAND Exclusive of Structures and Improvements	BUILDINGS and Other Structures	MACHINERY Permanently Attached to Real Estate	TOTAL True and Full Value	RURAL				ALL OTHER			TOTAL ASSESSED VALUE	Total Assessed Value as Equalized by the Board of Review	Districts						SPECIAL TAXES	SPECIAL TAXES	TOTAL TAXES		PAID	WHEN PAID	Number of Receipt	March Settlement 1962	June Settlement 1962	Penalty	November Settlement 1962	Penalty	Collections to First Monday in January 1963	Penalty	Delinquent on First Monday in January 1963	Total Delinquent Tax and Penalty
									Homestead Up to \$4,000 20%	Over \$4,000 and Non-Homestead 33 1/3%	Timber Land Class 3e 20%	Homestead Up to \$4,000 25%	Over \$4,000 and Non-Homestead 40%	MACHINERY Permanently Attached to Real Estate 33 1/4%	Seasonal and Recreational Cabins 33 1/3%			1	2	3	4	5	6																
U. S. of America																																							
U. S. of America																																							
U. S. of America																																							
U. S. of America																																							
U. S. of America																																							
J. R. Lait																																							
Andrew P. & Florence Peterson																																							
U. S. of America																																							
U. S. of America																																							
U. S. of America																																							
U. S. of America																																							
U. S. of America																																							
U. S. of America																																							
U. S. of America																																							
U. S. of America																																							
U. S. of America																																							
U. S. of America																																							
U. S. of America																																							

143-31
 Address
 Street
 School
 Locality
 State
 Zip
 Shingbee
 Oshkosh
 Kabokona
 Sprints
 Oshkosh
 Wa-Pa-Wa-De Bay

Assessment Roll and Tax List of Real Property in the Town of Shingobe

Cass County, Minnesota, for Taxes for the Year 1961.

Main table with columns for IN WHOSE NAME ASSESSED, DESCRIPTION OF PROPERTY, TRUE AND FULL VALUATIONS, ASSESSED VALUATIONS, VALUATIONS BY SCHOOL DISTRICTS AS EQUALIZED BY DEPARTMENT OF TAXATION, and various tax and payment details.

Real

142-31

Shingobe

Island

Print

Shingobe

Shingobe

Ojibway

Shingobe

Assessment Roll and Tax List of Real Property in the Town of Kingohee, Cass County, Minnesota, for Taxes for the Year 1961.

Cass County, Minnesota, for Taxes for the Year 1961.

Table with columns for IN WHOSE NAME ASSESSED, DESCRIPTION OF PROPERTY, TRUE AND FULL VALUATIONS, ASSESSED VALUATIONS, VALUATIONS BY SCHOOL DISTRICTS AS EQUALIZED BY DEPARTMENT OF TAXATION, SOLD FOR TAXES, PAID, WHEN PAID, and REMARKS. Includes handwritten entries for 'Govt Lot 3', 'Govt Lot 4', 'Govt Lot 5', and 'Govt Lot 1'.

Vertical text on the right margin: Addn. 142-31, Shingobe, Chippewa, Point, Surveys, Ojibway, Ka-Ba-Ma-Ma Bay.

* Indicate Type of Property: R-Residential, C-Commercial, I-Industrial, U-Utility, F-Farm, L-Lakeshore, T-Timber, M-Mineral

Main table with columns: IN WHOSE NAME ASSESSED, DESCRIPTION OF PROPERTY, TRUE AND FULL VALUATIONS (LAND, BUILDINGS, MACHINERY, TOTAL), ASSESSED VALUATIONS (RURAL, ALL OTHER, MACHINERY, Seasonal and Recreational), VALUATIONS BY SCHOOL DISTRICTS AS EQUALIZED BY DEPARTMENT OF TAXATION, TAX INCLUDING STATE HOMESTEAD, SPECIAL TAXES, TOTAL TAXES, PAID, WHEN PAID, Number of Receipt, March Settlement 1962, June Settlement 1962, November Settlement 1962, Collections to First Monday in January 1963, Delinquent on First Monday in January 1963, Total Delinquent Tax and Penalty, REMARKS.

(CONT ON NEXT PAGE)

Vertical text on the right edge: Add'l No., Serial No., Section, Land, Shinglee, Cass County, Minnesota, Splitter, O'Journey, Wa-Ba-Na-Na Bay

Assessment Roll and Tax List of Real Property in the

Town of Kingsbee

* Indicate Type of Property: R-Residential, C-Commercial, I-Industrial, U-Utility, F-Farm, L-Lakeshore, T-Timber, M-Mineral

Cass County, Minnesota, for Taxes for the Year 1961.

Table with columns for Description of Property, True and Full Valuations, Assessed Valuations, Valuations by School Districts, and various tax and payment details. Includes handwritten entries for names like 'W. G. + Dorothy Mandy' and 'James C. + Virginia M. Ellerton'.

(CONT ON NEXT PAGE)

Vertical text on the right edge of the page, including 'Add'l. Kingsbee Island' and 'Kabecon'.

Assessment Roll and Tax List of Real Property in the Town of Shingobee

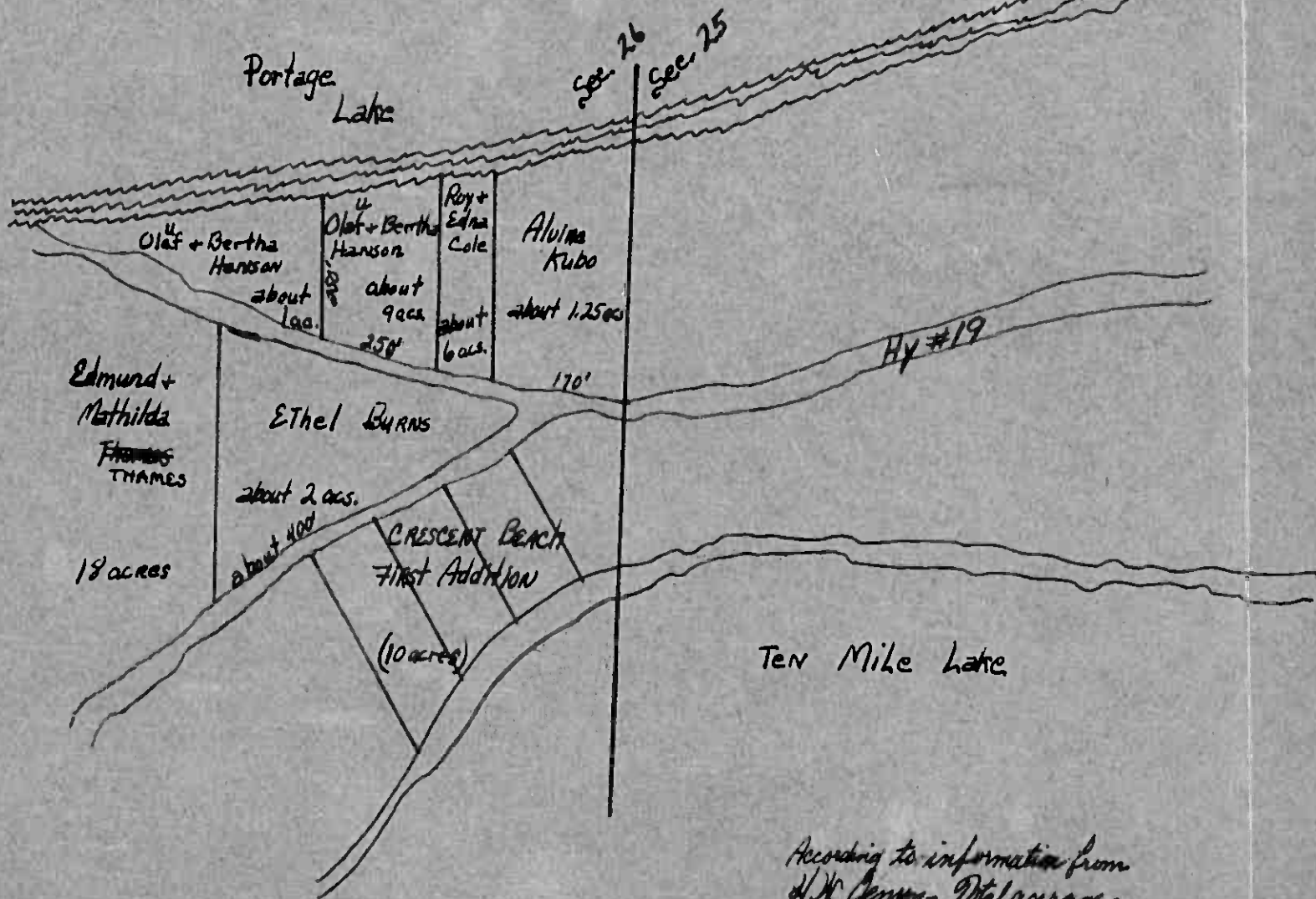
* Indicate Type of Property: R-Residential, C-Commercial, I-Industrial, U-Utility, F-Farm, L-Lakeshore, T-Timber, M-Mineral

Cass County, Minnesota, for Taxes for the Year 1961.

Main assessment table with columns for IN WHOSE NAME ASSESSED, DESCRIPTION OF PROPERTY, TRUE AND FULL VALUATIONS, ASSESSED VALUATIONS, VALUATIONS BY SCHOOL DISTRICTS AS EQUALIZED BY DEPARTMENT OF TAXATION, and various tax and payment columns.

(CONT NEXT PAGE)

Vertical text on the right edge: Add No. Shingobee, 142-31, Spruce Lake, Sprints, Kabokona, Ojibway, We-Ba-He-De-Bay



According to information from
H. W. Jensen - Total acreage
of Lot 3 - sec. 26 is 33.75 acs.
14-31

Assessment Roll and Tax List of Real Property in the

Town of Shingobee

* Indicate Type of Property: R-Residential, C-Commercial, I-Industrial, U-Utility, F-Farm, L-Lakeshore, T-Timber, M-Mineral

Form 50 MILLER-DAVIS CO-MINNEAPOLIS

IN WHOSE NAME ASSESSED	DESCRIPTION OF PROPERTY				No. School District	Indicate Homestead Yes or No	Agri. or Non-Agri. Yes or No	Indicate Type of Property	TRUE AND FULL VALUATIONS								ASSESSED VALUATIONS					FINAL EQUALIZED VALUE				
	SUBDIVISION	Sec. or Lot	Town or Block	Rng.					Number of Acres of Land	LAND Excludes of Structures and Improvements	BUILDINGS and Other Structures	MACHINERY Permanently Attached to Real Estate	TOTAL True and Full Value	RURAL			ALL OTHER		MACHINERY Permanently Attached to Real Estate	Seasonal and Recreational Cabins	TOTAL ASSESSED VALUE		Total Assessed Value as Equalized by the Board of Review			
														Acres	100ths	Homestead Up to \$4,000 20%	Over \$4,000 and Non-Homestead 33 1/3%	Timber Land Class 3e 20%						Homestead Up to \$4,000 25%	Over \$4,000 and Non-Homestead 40%	Dollars
<i>Ethel D. Burns</i>	APPROX. E 400' OF THAT PART OF SOUT LOT 2 LYING BETWEEN CRESTMOUNT BEACH 1ST RD. W. 1/4 19				26	141	32		2	119	Yes	No	R													
<i>Clara & Arthur Hanson</i>	ALL THAT PART OF SOUT LOT 3 LYING N. OF HWY. #19 & W. OF BIRKMAN TRACT								4		No	No	L													

Cass County, Minnesota, for Taxes for the Year 1961.

SOLD FOR TAXES	VALUATIONS BY SCHOOL DISTRICTS AS EQUALIZED BY DEPARTMENT OF TAXATION						Tax including State Homestead	State Tax on Non-Homestead	SPECIAL TAXES	SPECIAL TAXES	TOTAL TAXES	PAID	WHEN PAID	Number of Receipt	March Settlement 1962	June Settlement 1962	Penalty	November Settlement 1962	Penalty	Collections to First Monday in January 1963	Penalty	Delinquent on First Monday in January 1963	Total Delinquent Tax and Penalty	REMARKS	
	District No.	District No.	District No.	District No.	District No.	District No.																			
	Rate	Rate	Rate	Rate	Rate	Rate																			
1	4	167					4950				4950		1st Half Paid MAY 1 1962											18473	
5	33						978	30		1008		2nd Half Paid OCT 30 1962	2055	HALF PAID MAY 31 1962	12414									32332	11277
20	4	167					5928	30		5958															

Shingobee Ireland Oshtemo Wabasha Bay View

Assessment Roll and Tax List of Real Property in the

Town of Shingobee

* Indicate Type of Property: R-Residential, C-Commercial, I-Industrial, U-Utility, F-Farm, L-Lakeshore, T-Timber, M-Mineral

Cass County, Minnesota, for Taxes for the Year 1961.

Table with columns: IN WHOSE NAME ASSESSED, DESCRIPTION OF PROPERTY, TRUE AND FULL VALUATIONS, ASSESSED VALUATIONS, VALUATIONS BY SCHOOL DISTRICTS AS EQUALIZED BY DEPARTMENT OF TAXATION, TAXES, PAID, WHEN PAID, Number of Receipt, March Settlement, June Settlement, November Settlement, Collections to First Monday in January, Delinquent on First Monday in January, Total Delinquent Tax and Penalty, REMARKS.

142-31 Add'n. Sun-Isle Beach Shingobee Island Cottage Point Kapoleia Oahu Wa-Ba-Me-Be Bay

Assessment Roll and Tax List of Real Property in the

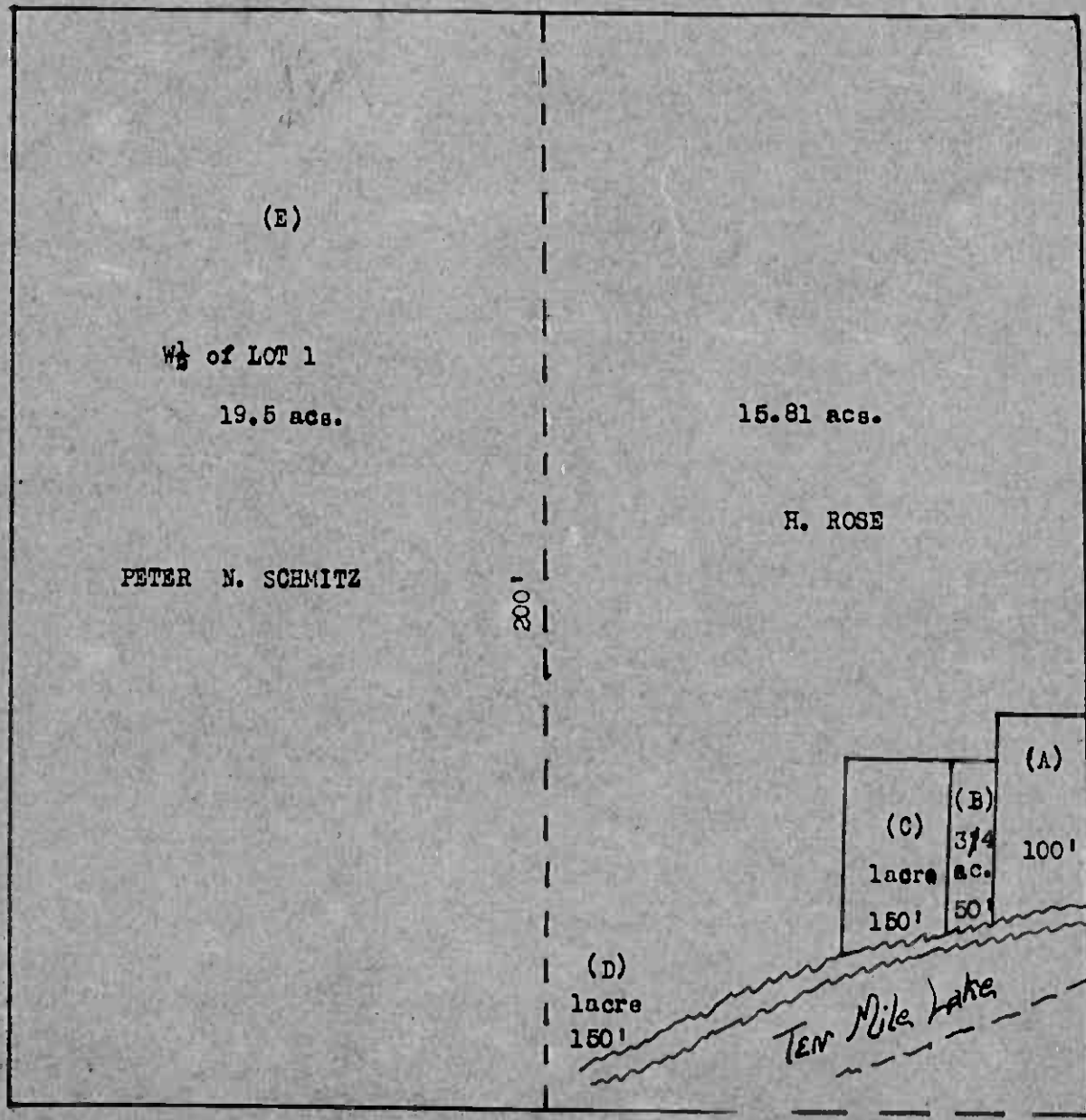
Town of Shungobee
* Indicate Type of Property: R-Residential, C-Commercial, I-Industrial, U-Utility, F-Farm, L-Lakeshore, T-Timber, M-Mineral

Cass County, Minnesota, for Taxes for the Year 1961.

Table with columns: IN WHOSE NAME ASSESSED, DESCRIPTION OF PROPERTY, TRUE AND FULL VALUATIONS, ASSESSED VALUATIONS, VALUATIONS BY SCHOOL DISTRICTS AS EQUALIZED BY DEPARTMENT OF TAXATION, TAX INCLUDING STATE HOMESTEAD, SPECIAL TAXES, TOTAL TAXES, PAID, WHEN PAID, Number of Receipt, March Settlement 1962, June Settlement 1962, Penalty, November Settlement 1962, Penalty, Collections to First Monday in January 1963, Delinquent on First Monday in January 1963, Total Delinquent Tax and Penalty, REMARKS. Rows 1-20 list property owners and details.

(CONT ON NEXT PAGE)

142-31 Add'l. Shungobee Island, Cass County, Minn. 55558



- A. T. KOLDERIE
- B. "
- C. ELMER NORDLAND
- D. HENRY ROSE
- E. PETER N. SCHMITZ

Except for distance given this map is not exact as we don't have the distance of lake

LOT 1 SEC. 34-141-31

Assessment Roll and Tax List of Real Property in the

Town of *Shingobee*

* Indicate Type of Property: R-Residential, C-Commercial, I-Industrial, U-Utility, F-Farm, L-Lakeshore, T-Timber, M-Mineral

Cass County, Minnesota, for Taxes for the Year 1961.

Form 50 - MILLER-COYNE CO., MINNEAPOLIS

IN WHOSE NAME ASSESSED	DESCRIPTION OF PROPERTY				No. School District	Indicate Homestead Yes or No	Agr. or Gen. Use Yes or No	Indicate Type of Property	TRUE AND FULL VALUATIONS				ASSESSED VALUATIONS					FINAL EQUALIZED VALUE		
	SUBDIVISION	Sec. or Lot	Town or Block	Acres of Land					LAND Exclusive of Structures and Improvements	BUILDINGS and Other Structures	MACHINERY Permanently Attached to Real Estate	TOTAL True and Full Value	RURAL		ALL OTHER				TOTAL ASSESSED VALUE	Total Assessed Value as Equalized by the Board of Review
													Homestead Up to \$4,000 20%	Over \$4,000 and Non-Homestead 33 1/3%	Timber Land Class 3e 20%	Homestead Up to \$4,000 25%	Over \$4,000 and Non-Homestead 40%			
				Acres 100ths					Dollars	Dollars	Dollars	Dollars	Dollars	Dollars	Dollars	Dollars				
		<i>34 141 31</i>			<i>119</i>															
<i>Theodore + Helen G. Kolden</i>	<i>50' X APPROX. 250' OF GOV'T LOT 1</i>			<i>75</i>	<i>119</i>	<i>NO</i>	<i>NO</i>	<i>H</i>												
<i>Ronald E. Nordlund</i>	<i>150' X APPROX. 250' OF GOV'T LOT 1</i>			<i>100</i>	<i>119</i>	<i>NO</i>	<i>NO</i>	<i>PC</i>												
<i>Theodore + Helen G. Kolden</i>	<i>COMM. AT INTER. OF C. LINE OF GOV'T LOT 1 + TEN MILE LAKE N. 250' BY W. 100' S. TO LAKE + A.E. TO PLOT C. S. 1/4 N. 1/4</i>			<i>57</i>	<i>119</i>	<i>NO</i>	<i>YES</i>	<i>R</i>												
<i>Bruce H. + Stanley H. Taylor</i>	<i>S. 250' OF GOV'T LOT 2</i>			<i>11 44</i>	<i>119</i>	<i>NO</i>	<i>YES</i>	<i>PC</i>												

SOLD FOR TAXES	VALUATIONS BY SCHOOL DISTRICTS AS EQUALIZED BY DEPARTMENT OF TAXATION						Tax Including State Homestead	State Tax on Non-Homestead	SPECIAL TAXES	SPECIAL TAXES	TOTAL TAXES	PAID	WHEN PAID	Number of Receipt	March Settlement 1962	June Settlement 1962	Penalty	November Settlement 1962	Penalty	Collections to First Monday in January 1963	Penalty	Delinquent on First Monday in January 1963	Total Delinquent Tax and Penalty	REMARKS
	District No.	District No.	District No.	District No.	District No.	District No.																		
	Rate	Rate	Rate	Rate	Rate	Rate																		
	Dollars	Dollars	Dollars	Dollars	Dollars	Dollars	\$ cts.	\$ cts.	\$ cts.	\$ cts.	\$ cts.	Month Day Year	\$ cts.	\$ cts.	\$ cts.	\$ cts.	\$ cts.	\$ cts.	\$ cts.	\$ cts.	\$ cts.	\$ cts.	\$ cts.	

142-31
 Add n.
 Surrise
 Beach
 Shingobee
 Island
 Point
 Chippewa
 Kabokoa
 Springs
 Ojibway
 Wa-Ba-Wa-Be Bay

Assessment Roll and Tax List of Real Property in the

Town of Wingate

* Indicate Type of Property: R-Residential, C-Commercial, I-Industrial, U-Utility, F-Farm, L-Lakeshore, T-Timber, M-Mineral

Table with columns: IN WHOSE NAME ASSESSED, DESCRIPTION OF PROPERTY, TRUTH AND FULL VALUATIONS, ASSESSED VALUATIONS, FINAL EQUALIZED VALUE. Includes entries for Clarence R. Larsen, Emily Johnston & Helen H. Larsen, Roy V. Bailey, State of Minnesota, R. G. & Dorothy E. Ross, Roy V. Bailey, Albert & Lydia Thomas, John C. & Ruth J. Vetter, Donald & Mary Ann Hensel, Andy E. E. & Helen Schaefer.

Cass County, Minnesota, for Taxes for the Year 1961.

Table with columns: SOLD FOR TAXES, VALUATIONS BY SCHOOL DISTRICTS AS EQUALIZED BY DEPARTMENT OF TAXATION, Tax Including State Homestead, State Tax on Non-Homestead, SPECIAL TAXES, SPECIAL TAXES, TOTAL TAXES, PAID, WHEN PAID, Number of Receipt, March Settlement 1962, June Settlement 1962, Penalty, November Settlement 1962, Penalty, Collection to First Monday in January 1963, Penalty, Delinquent on First Monday in January 1963, Total Delinquent Tax and Penalty, REMARKS. Includes entries for 1 through 20 with tax amounts and payment dates.

142-8-31, Add'l n. Sun-1-se, R-9-cd, Attach, Wingate, Free, Chippewa, Island, For, Point, kabezona, Ojibway, Wingate, Bay

Assessment Roll and Tax List of Real Property in the Town of Minnetonka

* Indicate Type of Property: R-Residential, C-Commercial, I-Industrial, U-Utility, F-Farm, L-Lakeshore, T-Timber, M-Mineral

Cass County, Minnesota, for Taxes for the Year 1961.

142-51

IN WHOSE NAME ASSESSED	SUBDIVISION	DESCRIPTION OF PROPERTY			No. School District	Indicate Homestead Yes or No	Agricultural or Non-Agricultural Yes or No	Indicate Type of Property	TRUE AND FULL VALUATIONS				ASSESSED VALUATIONS						FINAL EQUALIZED VALUE			
		Sec. or Lot	Town or Block	Rng.					Number of Acres of Land Acres 100ths	LAND Exclusive of Structures and Improvements	BUILDINGS and Other Structures	MACHINERY Permanently Attached to Real Estate	TOTAL True and Full Value	RURAL		ALL OTHER				TOTAL ASSESSED VALUE	Total Assessed Value as Equalized by the Board of Review	
														Homestead Up to \$4,000 20%	Over \$4,000 and Non-Homestead 33 1/3%	Timber Land Class 3c 20%	Homestead Up to \$4,000 25%	Over \$4,000 and Non-Homestead 40%				MACHINERY Permanently Attached to Real Estate 33 1/3%
<i>Francis X. Bredendick Jr. + Jean Bredendick</i>	<i>S. 70' OF GOV'T LOT 1</i>	<i>1</i>	<i>142</i>	<i>31</i>	<i>119</i>																	
<i>A. C. + Elsie Zischer</i>	<i>N. 169' OF S. 270' OF GOV'T LOT 1</i>																					
<i>Lina Foderberg + Albert Heywood</i>	<i>S. 320' OF N. 870' OF GOV'T LOT 1</i>				<i>2020</i>																	
<i>Roy L. + Maude M. Skow</i>	<i>S. 250' OF N. 550' OF GOV'T LOT 1</i>				<i>620</i>																	
<i>April M. + Edith E. Mitchell</i>	<i>S. 75' OF N. 300' OF GOV'T LOT 1</i>				<i>400</i>																	
<i>Robert B. + Gloria H. Simpson</i>	<i>N. 50' OF GOV'T LOT 1</i>				<i>375</i>																	
<i>Harold E. Coulter</i>	<i>N. 75' OF S. 150' OF N. 300' OF GOV'T LOT 1</i>																					
<i>C. E. + Marguerite A. Peterson</i>	<i>S. 100' OF N. 150' OF GOV'T LOT 1</i>																					
<i>Manuel N. Clark</i>	<i>N. 200' OF S. 430' OF GOV'T LOT 1</i>																					

SOLD FOR TAXES	VALUATIONS BY SCHOOL DISTRICTS AS EQUALIZED BY DEPARTMENT OF TAXATION						Tax Including State Homestead	State Tax on Non-Homestead	SPECIAL TAXES	SPECIAL TAXES	TOTAL TAXES	PAID	WHEN PAID	Number of Receipt	March Settlement 1962	June Settlement 1962	Penalty	November Settlement 1962	Penalty	Collections to First Monday in January 1963	Penalty	Delinquent on First Monday in January 1963	Total Delinquent Tax and Penalty	REMARKS
	District No.	Rate Mills	District No.	Rate Mills	District No.	Rate Mills																		
	Dollars	Dollars	Dollars	Dollars	Dollars	Dollars																		
<i>1</i>																								
<i>2</i>																								
<i>3</i>																								
<i>4</i>																								
<i>5</i>																								
<i>6</i>																								
<i>7</i>																								
<i>8</i>																								
<i>9</i>																								
<i>10</i>																								
<i>11</i>																								
<i>12</i>																								
<i>13</i>																								
<i>14</i>																								
<i>15</i>																								
<i>16</i>																								
<i>17</i>																								
<i>18</i>																								
<i>19</i>																								
<i>20</i>																								

Add'l No. Minnetonka, Minn. Assessor's Office

Assessment Roll and Tax List of Real Property in the Town of *Shingobee*

* Indicate Type of Property: R-Residential, C-Commercial, I-Industrial, U-Utility, F-Farm, L-Lakeshore, T-Timber, M-Mineral

Cass County, Minnesota, for Taxes for the Year 1961.

Form 60-MILLER-DAVIS BOW-MINNEAPOLIS

14231

IN WHOSE NAME ASSESSED	DESCRIPTION OF PROPERTY						TRUE AND FULL VALUATIONS											FINAL EQUALIZED VALUE		
	SUBDIVISION	Sec. of Lot	Town or Block	Rng.	Number of Acres of Land		LAND Exclusive of Structures and Improvements	BUILDINGS and Other Structures	MACHINERY Permanently Attached to Real Estate	TOTAL True and Full Value	ASSESSED VALUATIONS					TOTAL ASSESSED VALUE	Total Assessed Value as Equalized by the Board of Review			
					Acres	100ths					RURAL	ALL OTHER	MACHINERY	Seasonal and Recreational Cabins	TOTAL ASSESSED VALUE					
											Homestead Up to \$4,000 20%	Over \$4,000 and Non-Homestead 33 1/3%	Timber Land Class 3e 20%	Homestead Up to \$4,000 25%	Over \$4,000 and Non-Homestead 40%	33 1/3%	33 1/3%	Dollars	Dollars	
							Dollars	Dollars	Dollars	Dollars	Dollars	Dollars	Dollars	Dollars	Dollars	Dollars	Dollars	Dollars	Dollars	Dollars

Ellen Peterson

GOV'T LOT 5

2 14231

119

NO TAX

A. Lee Miller

GOV'T LOT 2

2950

NO TAX

4025

SOLD FOR TAXES	VALUATIONS BY SCHOOL DISTRICTS AS EQUALIZED BY DEPARTMENT OF TAXATION						Tax Including State Homestead	State Tax on Non-Homestead	SPECIAL TAXES	SPECIAL TAXES	TOTAL TAXES	PAID	WHEN PAID	Number of Receipt	March Settlement 1962	June Settlement 1962	Penalty	November Settlement 1962	Penalty	Collections to First Monday in January 1963	Penalty	Delinquent on First Monday in January 1963	Total Delinquent Tax and Penalty	REMARKS
	District No.	District No.	District No.	District No.	District No.	District No.																		
	Rate	Rate	Rate	Rate	Rate	Rate																		

2nd HALF PAID OCT 29 1961 18 66
1st HALF PAID MAY 29 1961 18 66

PAID IN FULL JAN. 18 1962 28 28 06

2138 19721

10102

to Add'l. Surtax of Shingobee Island for Chiappa Park Point Surtax
Shingobee Island
Surtax
Chiappa Park Point
Surtax
Surtax

Assessment Roll and Tax List of Real Property in the Town of Springdale, Cass County, Minnesota

Cass County, Minnesota, for Taxes for the Year 1961.

* Indicate Type of Property: R-Residential, C-Commercial, I-Industrial, U-Utility, F-Farm, L-Lakeshore, T-Timber, M-Mineral

Table with columns for Description of Property, True and Full Valuations, Assessed Valuations, Final Equalized Value, Valuations by School Districts, and Tax/Paid information. Rows list property owners like LeRoy + Elsie H. Matson and their respective lots and taxes.

(CONT. NEXT PAGE)

142-31

Vertical text on the right margin listing property addresses such as Springdale Island, Chi-Pema, and Kabokora.

Assessment Roll and Tax List of Real Property in the Town of Shingobee, Cass County, Minnesota, for Taxes for the Year 1961.

FORM 50 MILLER-DAVIS CO., MINNEAPOLIS

Table with columns for Property Description, Valuations (True and Full, Assessed), and Taxes (School Districts, State, Special). Includes handwritten entries for Robert & Bessie Cluth, Charles & Jennie DePach, and Frank & Mildred Vancouver.

(CONT. NEXT PAGE)

Assessment Roll and Tax List of Real Property in the Town of Shungoke, Cass County, Minnesota, for Taxes for the Year 1961.

Form 50 MILLER-DAVIS CO., MINNEAPOLIS

* Indicate Type of Property: R-Residential, C-Commercial, I-Industrial, U-Utility, F-Farm, L-Lakeshore, T-Timber, M-Mineral

Cass County, Minnesota, for Taxes for the Year 1961.

Table with columns: IN WHOSE NAME ASSESSED, DESCRIPTION OF PROPERTY, TRUE AND FULL VALUATIONS, ASSESSED VALUATIONS, VALUATIONS BY SCHOOL DISTRICTS AS EQUALIZED BY DEPARTMENT OF TAXATION, TAXES, PAID, WHEN PAID, Number of Receipt, March Settlement, June Settlement, Penalty, November Settlement, Penalty, Collections to First Monday in January 1963, Penalty, Delinquent on First Monday in January 1963, Total Delinquent Tax and Penalty, REMARKS.

12-3

Vertical text on the right edge of the page, including 'Add'l', 'Sunrise', 'Beach', 'Stingobee', 'Island', 'Chippewa', 'Point', 'Kabelkopa', 'Seylers', 'Oltway', 'Ma-Ba-Ma-De Bay'.

Assessment Roll and Tax List of Real Property in the Town of Shingobee

Cass County, Minnesota, for Taxes for the Year 1961.

Main assessment table with columns: IN WHOSE NAME ASSESSED, DESCRIPTION OF PROPERTY, TRUE AND FULL VALUATIONS, ASSESSED VALUATIONS, VALUATIONS BY SCHOOL DISTRICTS AS EQUALIZED BY DEPARTMENT OF TAXATION, TAXES, PAID, WHEN PAID, Number of Receipt, March Settlement 1962, June Settlement 1962, November Settlement 1962, Collections to First Monday in January 1963, Delinquent on First Monday in January 1963, Total Delinquent Tax and Penalty, REMARKS.

142-31

1st Add'n. James Beach Beach Sunrise Shingobee Island Chippewa Point Kabokona Ojibway Wa-Ba-Ma-Me Bay

Assessment Roll and Tax List of Real Property in the Town of Kingslee, Cass County, Minnesota, for Taxes for the Year 1961.

* Indicate Type of Property: R-Residential, C-Commercial, I-Industrial, U-Utility, F-Farm, L-Lakeshore, T-Timber, M-Mineral

Table with columns: IN WHOSE NAME ASSESSED, SUBDIVISION, No. School District, Indicate Home Stead, Agri. or Sea., Indicate Type of Property, TRUE AND FULL VALUATIONS (LAND, BUILDINGS, MACHINERY, TOTAL), ASSESSED VALUATIONS (RURAL, ALL OTHER, MACHINERY, Seasonal and Recreational Cabins, TOTAL ASSESSED VALUE, Total Assessed Value as Equalized by the Board of Review, FINAL EQUALIZED VALUE).

142-81

Cass County, Minnesota, for Taxes for the Year 1961.

Table with columns: SOLD FOR TAXES, VALUATIONS BY SCHOOL DISTRICTS AS EQUALIZED BY DEPARTMENT OF TAXATION (District No., Rate, etc.), Tax Including State Homestead, State Tax on Non-Homestead, SPECIAL TAXES, TOTAL TAXES, PAID, WHEN PAID, Number of Receipt, March Settlement, June Settlement, Penalty, Collections to First Monday in January 1963, Delinquent on First Monday in January 1963, Total Delinquent Tax and Penalty, REMARKS.

Handwritten notes and signatures: State of Minnesota, Little Giant, Inc., Hecker Lumber Bridge & Supply Co., U.S. of America (Formerly Indian Land), U.S. of America, State of Minnesota, Herbert A. Noetz, Francis X. Burkhardt.

Vertical text on the right edge: Addre, Sunrise, Kingslee, Island, Chippewa, State, Kabekona, Ojibway, W-Ba-Me-Me Bay.

Assessment Roll and Tax List of Real Property in the

of *Shingobee*

* Indicate Type of Property: R-Residential, C-Commercial, I-Industrial, U-Utility, F-Farm, L-Lakeshore, T-Timber, M-Mineral

Cass County, Minnesota, for Taxes for the Year 1961.

Table with columns: IN WHOSE NAME ASSESSED, DESCRIPTION OF PROPERTY, TRUE AND FULL VALUATIONS (RURAL, ALL OTHER, MACHINERY, Seasonal and Recreational Cabins), ASSESSED VALUATIONS (TOTAL ASSESSED VALUE), VALUATIONS BY SCHOOL DISTRICTS AS EQUALIZED BY DEPARTMENT OF TAXATION, TAX INCLUDING STATE HOMESTEAD, State Tax on Non-Homestead, SPECIAL TAXES, TOTAL TAXES, PAID, WHEN PAID, Number of Receipt, March Settlement, June Settlement, November Settlement, Collections to First Monday in January 1961, Delinquent on First Monday in January 1963, Total Delinquent Tax and Penalty, REMARKS.

142-31

Shingobee Island, Chippeewa Point, Kabekona, Ojibway, Add'l. Surtax, James Beach Beach

Assessment Roll and Tax List of Real Property in the Town of *Shingobee*

* Indicate Type of Property: R-Residential, C-Commercial, I-Industrial, U-Utility, F-Farm, L-Lakeshore, T-Timber, M-Mineral

Cass County, Minnesota, for Taxes for the Year 1961.

Table with columns: IN WHOSE NAME ASSESSED, DESCRIPTION OF PROPERTY, TRUTH AND FULL VALUATIONS, ASSESSED VALUATIONS, VALUATIONS BY SCHOOL DISTRICTS AS EQUALIZED BY DEPARTMENT OF TAXATION, TAXES, PAID, WHEN PAID, Number of Receipt, March Settlement, June Settlement, November Settlement, Collections to First Monday in January, Delinquent on First Monday in January, Total Delinquent Tax and Penalty, REMARKS.

142-31

Let. Ad'n. Shingobee Beach, Shingobee Island, Br. Uhpenna Point, kabekeona Springs, Ma-Ba-Ma-Mo Bay

Assessment Roll and Tax List of Real Property in the Town of Shingobee, Cass County, Minnesota, for Taxes for the Year 1961.

* Indicate Type of Property: R-Residential, C-Commercial, I-Industrial, U-Utility, F-Farm, L-Lakeshore, T-Timber, M-Mineral

Cass County, Minnesota, for Taxes for the Year 1961.

Table with columns: IN WHOSE NAME ASSESSED, DESCRIPTION OF PROPERTY, TRUE AND FULL VALUATIONS, ASSESSED VALUATIONS, VALUATIONS BY SCHOOL DISTRICTS AS EQUALIZED BY DEPARTMENT OF TAXATION, TAXES, PAID, WHEN PAID, etc. Includes handwritten entries for property owners like Mahlon C. + Ruby B. Siger and tax amounts.

12-27

Address: Shingobee Island, Chippewa Point, Kabecon's Highway, Na-Da-Na-To Bay

Assessment Roll and Tax List of Real Property in the

Town of Shingobee

* Indicate Type of Property: R-Residential, C-Commercial, I-Industrial, U-Utility, F-Farm, L-Lakeshore, T-Timber, M-Mineral

Form 50 - MILLER-DAVIS CO., MINNEAPOLIS

IN WHOSE NAME ASSESSED	DESCRIPTION OF PROPERTY				No. School District	Indicate Homestead Yes or No	Agricultural Use Yes or No	Indicate Type of Property	TRUE AND FULL VALUATIONS				ASSESSED VALUATIONS						FINAL EQUALIZED VALUE		
	SUBDIVISION	Sec. or Lot	Town or Block	Number of Acres of Land					LAND Exclusive of Structures and Improvements	BUILDINGS and Other Structures	MACHINERY Permanently Attached to Real Estate	TOTAL True and Full Value	RURAL		ALL OTHER					TOTAL ASSESSED VALUE	Total Assessed Value as Equalized by the Board of Review
													Homestead Up to \$4,000 20%	Over \$4,000 and Non-Homestead 33 1/3%	Timber Land Class 3e 20%	Homestead Up to \$4,000 25%	Over \$4,000 and Non-Homestead 40%	MACHINERY Permanently Attached to Real Estate 33 1/3%			
Lewis A. + Nettie L. Becker	1			19	110	Yes	Yes	F													
L.O. Becker	2			1		No		T													
John Hanson	4			10		Yes		F													
Village of Walker	5																				
C.B. Ayars + Vera L. Ayars	6					Yes	No	R													
E. Harold + Edna J. Johnson	7					No	Yes	"													
John L. + Anna L. Rimmell	8					No		"													
Carl E. + Dorothy E. Walters	9					Yes	No	"													
Village of Walker	10																				
Harold H. + Gretchen A. Oasen	11					Yes	No	R													
Mendelin + Agnes Ordert	14			70		Yes	No	R													
" " "	15			70		Yes	No	T													
Carl E. + Dorothy E. Walters	20					No	No	L													

Cass County, Minnesota, for Taxes for the Year 1961.

SOLD FOR TAXES	VALUATIONS BY SCHOOL DISTRICTS AS EQUALIZED BY DEPARTMENT OF TAXATION						Tax Including State Homestead	State Tax on Non-Homestead	SPECIAL TAXES	SPECIAL TAXES	TOTAL TAXES	PAID	WHEN PAID	Number of Receipt	March Settlement 1962	June Settlement 1962	Penalty	November Settlement 1962	Penalty	Collections to First Monday in January 1963	Penalty	Delinquent on First Monday in January 1963	Total Delinquent Tax and Penalty	REMARKS	
	District No.	District No.	District No.	District No.	District No.	District No.																			
	Rate	Rate	Rate	Rate	Rate	Rate																			
1							\$ 86.86				\$ 86.86	1st HALF PAID OCT 31 1962													
2							136	04			140	2nd HALF PAID OCT 31 1962													
3																									
4							652				652	2nd Half Paid OCT 31 1962													
5																									
6							6966				6966	PAID IN FULL MAY 23 1962													
7							14928	502			15430	PAID IN FULL MAY 15 1962													
8							11046	372			11418	PAID IN FULL MAY 25 1962													
9							10108				10108	2nd Half Paid SEP 26 1962													
10																									
11							8536				8536	PAID IN FULL MAY 7 1962													
12																									
13																									
14							3734				3734	2nd HALF PAID OCT 31 1962													
15							296				296	1st HALF PAID OCT 31 1962													
16																									
17																									
18																									
19																									
20							1186	36			1222	2nd Half Paid SEP 26 1962													

142-31

Shingobee, Minn. Assessor's Office

Assessment Roll and Tax List of Real Property in the

Town of Sunbuck

* Indicate Type of Property: R-Residential, C-Commercial, I-Industrial, U-Utility, F-Farm, L-Lakeshore, T-Timber, M-Mineral

Cass County, Minnesota, for Taxes for the Year 1961.

Table with columns for Assessed Valuations, Taxes, and Payment Status. Includes property descriptions like 'GOVT LOT 2', 'GOVT LOT 3', 'GOVT LOT 6', and 'GOVT LOT 5'. Lists owners such as John Colin Nantso and Pearl Flinde. Includes columns for rural and all other valuations, and tax rates by school district.

142-31

Vertical text on the far right edge, possibly listing names or addresses.

Assessment Roll and Tax List of Real Property in the Town of Kingslee

Cass County, Minnesota, for Taxes for the Year 1961.

Table with columns: IN WHOSE NAME ASSESSED, DESCRIPTION OF PROPERTY, TRUE AND FULL VALUATIONS, VALUATIONS BY SCHOOL DISTRICTS AS EQUALIZED BY DEPARTMENT OF TAXATION, TAXES, WHEN PAID, and REMARKS. Includes handwritten entries for property owners like Charles B. Cristell, Julius C. & Minnie A. Johnson, etc.

142-31

Address: Kingslee, Cass County, Minnesota. Includes names like Shingobee, Island, Point, Spruce, etc.

Assessment Roll and Tax List of Real Property in the Town of Shingee

Cass County, Minnesota, for Taxes for the Year 1961.

* Indicate Type of Property: R-Residential, C-Commercial, I-Industrial, U-Utility, F-Farm, L-Lakeshore, T-Timber, M-Mineral

Table with columns: IN WHOSE NAME ASSESSED, DESCRIPTION OF PROPERTY, TRUE AND FULL VALUATIONS, ASSESSED VALUATIONS, VALUATIONS BY SCHOOL DISTRICTS AS EQUALIZED BY DEPARTMENT OF TAXATION, Tax including State Homestead, SPECIAL TAXES, TOTAL TAXES, PAID, WHEN PAID, Number of Receipt, March Settlement 1962, June Settlement 1962, November Settlement 1962, Delinquent on First Monday in January 1961, Total Delinquent Tax and Penalty, REMARKS.

142-31

Address: Shingee, Cass County, Minn.
Owner: Harold Fisher, Alfred N. Meland, Fred & Fred Christian, Harry John Gladys Ella LaManga, Norma C. Humphrey, R. E. Gaston, William + Anne Elliott, Harold P. + Helen E. Mansenberg, Daniel P. + Esther M. Johnson, Williams + Anne R. Elliott, Oscar U. + Katherine M. Larson, Harry + Gladys LaManga, Mervel E. + Mary P. Lee, Richard G. + Michael P. Humann

Assessment Roll and Tax List of Real Property in the Town of Shingobee, Cass County, Minnesota, for Taxes for the Year 1961.

Table with columns: IN WHOSE NAME ASSESSED, DESCRIPTION OF PROPERTY, TRUE AND FULL VALUATIONS, ASSESSED VALUATIONS, VALUATIONS BY SCHOOL DISTRICTS AS EQUALIZED BY DEPARTMENT OF TAXATION, TAXES, PAID, WHEN PAID, Number of Receipt, March Settlement 1962, June Settlement 1962, Penalty, November Settlement 1962, Penalty, Collections to First Monday in January 1963, Penalty, Delinquent on First Monday in January 1963, Total Delinquent Tax and Penalty, REMARKS.

(CONT NEXT PAGE)

142-51

Vertical text on the right edge of the page, possibly a page number or reference.

Assessment Roll and Tax List of Real Property in the Town of Shingobee

* Indicate Type of Property: R-Residential, C-Commercial, I-Industrial, U-Utility, F-Farm, L-Lakeshore, T-Timber, M-Mineral

Cass County, Minnesota, for Taxes for the Year 1961.

Table with columns for Description of Property, Assessed Valuations (Rural, All Other, Machinery, etc.), Final Equalized Value, Sold For Taxes, Valuations by School Districts, and Tax/Payment details (Total Taxes, PAID, WHEN PAID, etc.).

142-31

Vertical text on the right edge of the page, including 'Cass County, Minnesota' and other administrative markings.

Assessment Roll and Tax List of Real Property in the Town of Kingsdale of Shingobee County, Minnesota.

* Indicate Type of Property: R-Residential, C-Commercial, I-Industrial, U-Utility, F-Farm, L-Lakeshore, T-Timber, M-Mineral

Cass County, Minnesota, for Taxes for the Year 1961.

Table with columns: IN WHOSE NAME ASSESSED, DESCRIPTION OF PROPERTY, TRUE AND FULL VALUATIONS (LAND, BUILDINGS, MACHINERY, TOTAL), ASSESSED VALUATIONS (RURAL, ALL OTHER, MACHINERY, Seasonal and Recreational Cabins, TOTAL ASSESSED VALUE, Total Assessed Value as Equalized by the Board of Review), FINAL EQUALIZED VALUE, VALUATIONS BY SCHOOL DISTRICTS AS EQUALIZED BY DEPARTMENT OF TAXATION (District No., Rate, Taxes), SPECIAL TAXES, TOTAL TAXES, PAID (Month, Day, Year), WHEN PAID (Month, Day, Year), Number of Receipts, March Settlement 1962, June Settlement 1962, November Settlement 1962, Penalty, Collections to First Monday in January 1963, Delinquent on First Monday in January 1963, Total Delinquent Tax and Penalty, REMARKS. Includes handwritten entries for various property owners like Henry Padlock, Cecelia Wallace, and U.S. of America.

(CONT NEXT PAGE)

Map of Shingobee County, Minnesota, with place names: Kingsdale, St. Mary, St. Anthony, St. Joseph, St. Peter, St. John, St. James, St. Paul, St. Martin, St. George, St. Andrew, St. Nicholas, St. Raphael, St. Elizabeth, St. Theresa, St. Agnes, St. Cecilia, St. Barbara, St. Brigida, St. Blaise, St. Apollonia, St. Helena, St. Margareta, St. Gertrude, St. Ursula, St. Agatha, St. Katerina, St. Barbara, St. Elizabeth, St. Theresa, St. Agnes, St. Cecilia, St. Barbara, St. Brigida, St. Blaise, St. Apollonia, St. Helena, St. Margareta, St. Gertrude, St. Ursula, St. Agatha, St. Katerina.

Assessment Roll and Tax List of Real Property in the Town of Shingobee

* Indicate Type of Property: R-Residential, C-Commercial, I-Industrial, U-Utility, F-Farm, L-Lakeshore, T-Timber, M-Mineral

Cass County, Minnesota, for Taxes for the Year 1962.

Table with multiple columns: IN WHOSE NAME ASSESSED, DESCRIPTION OF PROPERTY, TRUE AND FULL VALUATIONS (RURAL, ALL OTHER), VALUATIONS BY SCHOOL DISTRICTS AS EQUALIZED BY DEPARTMENT OF TAXATION, Tax Including State Homestead, PAID, WHEN PAID, etc.

Vertical text on the right edge: 142-31, Direction, 1st Add'n, Garage, Beach, Shingobee Island, Brn. whippers, 10' wide, 10' wide, Kabekone, Spruce, Ojibway, Ma-Ba-Ja-Ja Bay

Assessment Roll and Tax List of Real Property in the Town of *Shingobee*

* Indicate Type of Property: R-Residential, C-Commercial, I-Industrial, U-Utility, F-Farm, L-Lakeshore, T-Timber, M-Mineral

Table with columns: IN WHOSE NAME ASSESSED, DESCRIPTION OF PROPERTY, TRUE AND FULL VALUATIONS, ASSESSED VALUATIONS, and FINAL EQUALIZED VALUE. Includes handwritten entries for property owners like Arthur Harold Greber and Leonard Stephen Greber.

Cass County, Minnesota, for Taxes for the Year 1961.

Table with columns: SOLD FOR TAXES, VALUATIONS BY SCHOOL DISTRICTS AS EQUALIZED BY DEPARTMENT OF TAXATION, Tax including State Homestead, SPECIAL TAXES, TOTAL TAXES, PAID, WHEN PAID, and REMARKS. Includes handwritten tax payment details and dates.

142-51

Vertical text on the right edge of the page, including 'Shingobee Island' and other location names.

Assessment Roll and Tax List of Real Property in the Town of Sturgeon of Sturgeon County, Minnesota

* Indicate Type of Property: R-Residential, C-Commercial, I-Industrial, U-Utility, F-Farm, L-Lakeshore, T-Timber, M-Mineral

Cass County, Minnesota, for Taxes for the Year 1961.

142-31

IN WHOSE NAME ASSESSED	DESCRIPTION OF PROPERTY			No. School District	Indicate Homestead Yes or No	Agricultural Recr. Yes or No	Indicate Type of Property	TRUE AND FULL VALUATIONS											FINAL EQUALIZED VALUE
	SUBDIVISION	Sec. or Lot	Town or Block					Number of Acres of Land	LAND Structures and Improvements	BUILDINGS and Other Structures	MACHINERY Permanently Attached to Real Estate	TOTAL True and Full Value	RURAL		ALL OTHER			MACHINERY Permanently Attached to Real Estate	
	Acres 100ths							Dollars	Dollars	Dollars	Dollars	Dollars	Dollars	Dollars	Dollars	Dollars	Dollars	Dollars	
U. S. of America				119															
State of Minnesota																			
<i>Wiley J. & Gertrude A. Potter</i>																			
U. S. of America																			
State of Minnesota																			
State of Minnesota																			
U. S. of America																			
U. S. of America																			
U. S. of America																			
U. S. of America																			
<i>Wiley J. & Gertrude A. Potter</i>																			
U. S. of America																			
U. S. of America																			
U. S. of America																			

SOLD FOR TAXES	VALUATIONS BY SCHOOL DISTRICTS AS EQUALIZED BY DEPARTMENT OF TAXATION						Tax Including State Homestead	State Tax on Non-Homestead	SPECIAL TAXES	SPECIAL TAXES	TOTAL TAXES	PAID	WHEN PAID	Number of Receipt	March Settlement 1962	June Settlement 1962	Penalty	November Settlement 1962	Penalty	Collections to First Monday in January 1963	Penalty	Delinquent on First Monday in January 1963	Total Delinquent Tax and Penalty	REMARKS
	District No.	District No.	District No.	District No.	District No.	District No.																		
	No.	No.	No.	No.	No.	No.	Mills	Mills	Mills	Mills	Mills	Mills	Mills	Mills	Mills	Mills	Mills	Mills	Mills	Mills	Mills	Mills	Mills	

Sturgeon, Minn. Add'n. Sunrise Beach, Island, Point, Spires, Otway, Bay

Do not copy in Shingobee 1962 book
Is now in Walker Village

Card # 21907

and Tax List of Real Property in the Town of Shingobee
* Indicate Type of Property: R-Residential, C-Commercial, I-Industrial, U-Utility, F-Farm, L-Lakeshore, T-Timber, M-Mineral

Cass County, Minnesota, for Taxes for the Year 1961.

Table with columns: DESCRIPTION OF PROPERTY, TRUE AND FULL VALUATIONS, ASSESSED VALUATIONS, VALUATIONS BY SCHOOL DISTRICTS AS EQUALIZED BY DEPARTMENT OF TAXATION, SOLD FOR TAXES, SPECIAL TAXES, TOTAL TAXES, PAID, WHEN PAID, Number of Receipt, March Settlement, June Settlement, November Settlement, Collections to First Monday in January, Delinquent on First Monday in January, Total Delinquent Tax and Penalty, REMARKS.

Assessment Roll and Tax List of Real Property in the Town of Singotte, Cass County, Minnesota

Cass County, Minnesota, for Taxes for the Year 1961.

* Indicate Type of Property: R-Residential, C-Commercial, I-Industrial, U-Utility, F-Farm, L-Lakeshore, T-Timber, M-Mineral

Table with columns: IN WHOSE NAME ASSESSED, DESCRIPTION OF PROPERTY, TRUE AND FULL VALUATIONS, ASSESSED VALUATIONS, VALUATIONS BY SCHOOL DISTRICTS AS EQUALIZED BY DEPARTMENT OF TAXATION, TAX INCLUDING STATE HOMESTEAD, SPECIAL TAXES, PAID, WHEN PAID, Number of Receipt, March Settlement, June Settlement, November Settlement, Collections to First Monday in January 1963, Delinquent on First Monday in January 1963, Total Delinquent Tax and Penalty, REMARKS.

(CONT NEXT PAGE)

142-31

Vertical text on the right edge of the page, including 'Singotte', 'Cass County', and other location identifiers.

Assessment Roll and Tax List of Real Property in the Town of Stungobee

* Indicate Type of Property: R-Residential, C-Commercial, I-Industrial, U-Utility, F-Farm, L-Lakeshore, T-Timber, M-Mineral

142-31

IN WHOSE NAME ASSESSED	SUBDIVISION	Sec. of Lot	Town or Block	Rtg.	Number of Acres of Land	No. School District	Indicate Home-Head Yes or No		Agr. or Merc. Yes or No	Indicate Type of Property	TRUCK AND FULL VALUATIONS							ASSESSED VALUATIONS							FINAL EQUALIZED VALUE
							LAND Exclusive of Structures and Improvements	BUILDINGS and Other Structures			MACHINERY Permanently Attached to Real Estate	TOTAL True and Full Value	RURAL							TOTAL ASSESSED VALUE	Total Assessed Value as Equalized by the Board of Review				
													Homestead Up to \$4,000 20%	Over \$4,000 and Non-Homestead 33 1/3%	Timber Land Class 3e 20%	Homestead Up to \$4,000 25%	Over \$4,000 and Non-Homestead 40%	MACHINERY Permanently Attached to Real Estate 33 1/3%	Reasonal and Recreational Cabins 33 1/3%						
Chris Z. Karsan	NE 1/4 of NE 1/4	36	B 2 31	40	119		Yes	Yes	T																
"	GOVT LOT 1 LESS 5X16 RDS + LESS 1/4 AC.				2229		Yes	No	L																
State of Minnesota Erick & Helma L. Almqvist	5 X 16 RDS. OF GOVT LOT 1				40		No	Yes	T																
John J. + Helma M. Karsan	2 ACS. OF GOVT LOT 1				3		No	"	"																
Melgard L. + Olo Knutson	2.71 ACS. OF GOVT LOT 1				2.71		No	Yes	R																
Ralph H. Lower	GOVT LOT 4				1775		No	Yes	L																
Erick + Helma L. Almqvist	GOVT LOT 2				2325		No	Yes	L																
Eleanor Grant + Jean L. Copeland	NE 1/4 OF SE 1/4				40		No	"	T																
Robert H. + E. Gene Anderson	GOVT LOT 3				830		No	"	"																
Myrtle L. Copeland + Fred + U. McRiel	SW 1/4 OF SE 1/4				40		No	"	"																

Cass County, Minnesota, for Taxes for the Year 1961.

SOLD FOR TAXES	VALUATIONS BY SCHOOL DISTRICTS AS EQUALIZED BY DEPARTMENT OF TAXATION						Tax Including State Homestead	State Tax on Non-Homestead	SPECIAL TAXES	SPECIAL TAXES	TOTAL TAXES	PAID	WHEN PAID	Number of Receipt	March Settlement 1962	June Settlement 1962	Penalty	November Settlement 1962	Penalty	Collectors in First Monday in January 1963	Penalty	Delinquent on First Monday in January 1963	Total Delinquent Tax and Penalty	REMARKS	
	District No.	District No.	District No.	District No.	District No.	District No.																			
	119																								
	45						1086				1086														
		45					1334				1334														
							2172	72			2244														
							542	18			560														

District 119
 District 45
 District 80
 District 80
 District 33
 District 128
 District 107
 District 100
 District 100
 District 45
 District 40
 District 82
 District 86

Assessment Roll and Tax List of Real Property in the

Town of *Shingobe*

* Indicate Type of Property: R-Residential, C-Commercial, I-Industrial, U-Utility, F-Farm, L-Lakeshore, T-Timber, M-Mineral

Cass County, Minnesota, for Taxes for the Year 1961.

IN WHOSE NAME ASSESSED	SUBDIVISION	Sec. of Lot	Town or Block	Number of Acres of Land	No. School District	Indicate Homestead Yes or No		Indicate Agricultural Use Yes or No		Indicate Type of Property	TRUE AND FULL VALUATIONS					ASSESSED VALUATIONS							FINAL EQUALIZED VALUE					
						LAND Exclusive of Structures and Improvements	BUILDINGS and Other Structures	MACHINERY Permanently Attached to Real Estate	TOTAL True and Full Value		RURAL		ALL OTHER			MACHINERY Permanently Attached to Real Estate	Seasonal and Recreational Cabins	TOTAL ASSESSED VALUE	Total Assessed Value as Equalized by the Board of Review									
						Dollars	Dollars	Dollars	Dollars		Homestead Up to \$4,000 20%	Over \$4,000 and Non-Homestead 33 1/3 %	Timber Land Class 3e 20%	Homestead Up to \$4,000 25%	Over \$4,000 and Non-Homestead 40%	33 1/3 %	33 1/3 %	Dollars	Dollars									
Otto & Edna Kruse	Shingobe Island	21	7		119	Yes	No	Yes	No																			
" "		22				Yes	"	"	"																			

SOLD FOR TAXES	VALUATIONS BY SCHOOL DISTRICTS AS EQUALIZED BY DEPARTMENT OF TAXATION						Tax including State Homestead	State Tax on Non-Homestead	SPECIAL TAXES	SPECIAL TAXES	TOTAL TAXES	PAID	WHEN PAID	Number of Receipt	March Settlement 1962	June Settlement 1962	Penalty	November Settlement 1962	Equality	Collections to First Monday in January 1961	Penalty	Delinquent on First Monday in January 1963	Total Delinquent Tax and Penalty	REMARKS				
	District No.	Rate	District No.	Rate	District No.	Rate																						
	Dollars	Dollars	Dollars	Dollars	Dollars	Dollars																						
	4	15					444																					
	4	15					444																					

142-51 Sunrise Beach Shingobe Island

Shingobe Island Point Sigaoka Ojibwa Park Kahekona Ojibwa Park

Assessment Roll and Tax List of Real Property in the Town of Kingsbee, Cass County, Minnesota, for Taxes for the Year 1961.

Cass County, Minnesota, for Taxes for the Year 1961.

Table with columns for Description of Property, True and Full Valuations, Assessed Valuations, Valuations by School Districts, Sold for Taxes, Paid, and Remarks. Includes handwritten entries for names like Eleanor Hageboeck and N. Z. Gildner, and lot numbers.

142-51, Sunrize Beach, Shingobee Island, Chippewa Point, Babekona Springs, Ojibwa

Marquette, Gatche Gumeo Beach, Gatche Gumeo Beach, Breezy Point, Crescent Beach, Wa-Ba-Beach

Assessment Roll and Tax List of Real Property in the

Name of Minnesota

* Indicate Type of Property: R-Residential, C-Commercial, I-Industrial, U-Utility, F-Farm, L-Lakeshore, T-Timber, M-Mineral

Cass County, Minnesota, for Taxes for the Year 1961.

DESCRIPTION OF PROPERTY

DESCRIPTION OF PROPERTY				School District	Indi- rate for-stand Yes or No	Agril. or Non-Agril. Yes or No	Indi- cate type of Prop- erty	TRUE AND FULL VALUATIONS												
IN WHOSE NAME ASSESSED	SUBDIVISION	Sec. or Lot	Town or Block					Number of Acres of Land	LAND Exclusive of Structures and Improvements	BUILDINGS and Other Structures	MACHINERY Permanently Attached to Real Estate	TOTAL True and Full Value	RURAL				ALL OTHER			TOTAL ASSESSED VALUE
				Acres 100ths			Dollars	Dollars	Dollars	Dollars	Dollars	Dollars	Dollars	Dollars	Dollars	Dollars	Dollars	Dollars		
Zelda B. Johnson	Bulls First Addn to Clichee Gumees Beach	1	2		119															
"	"	2																		
"	"	3																		
Kathryn B. Hebecker	"	4																		
"	"	5																		
"	"	6																		
		7																		
		8																		
		9																		
		10																		
		11																		
		12																		
		13																		
		14																		
		15																		
		16																		
		17																		
		18																		
		19																		
		20																		

SOLD FOR TAXES	VALUATIONS BY SCHOOL DISTRICTS AS EQUALIZED BY DEPARTMENT OF TAXATION						Tax including State Homestead	State Tax on Non-Homestead	SPECIAL TAXES	SPECIAL TAXES	TOTAL TAXES	PAID	WHEN PAID	Number of Receipt	March Settlement 1962	June Settlement 1962	November Settlement 1962	Penalty	Collections to First Monday in January 1963	Delinquent on First Monday in January 1963	Total Delinquent Tax and Penalty	REMARKS	
	District No.	District No.	District No.	District No.	District No.	District No.																	Dollars
	119	119	119	119	119	119	272	10			282			1									PAID IN FULL MAY 3 1962
	119	119	119	119	119	119	272	10			282			2									PAID IN FULL MAY 3 1962
				81			2198	74			2272			3									PAID IN FULL MAY 3 1962
				172			4668	156			4824			4									PAID IN FULL MAY 3 1962
				3			88	02			90			5									PAID IN FULL MAY 3 1962
				3			88	02			90			6									PAID IN FULL MAY 3 1962

142-51
Sunny Falls 1st add'n
Bulls Beach
Shingobe Island
Chippewa Point
Lakona Springs
Cilbwa

Shingobe Beach
Dartmouth
Globe Beach
Breezy Pt
Crescent Beach
Crescent Beach 1st Add'n
Wa-Ba-Na

Assessment Roll and Tax List of Real Property in the

Town of Sunapee

* Indicate Type of Property: R-Residential, C-Commercial, I-Industrial, U-Utility, F-Farm, L-Lakeshore, T-Timber, M-Mineral

Cass County, Minnesota, for Taxes for the Year 1961.

142-
Crescent Beach
Balls 1st add
Githoe Gimes
Crescent Beach
Balls 1st add
Githoe Gimes
Crescent Beach
Balls 1st add
Githoe Gimes
Crescent Beach
Balls 1st add
Githoe Gimes
Crescent Beach
Balls 1st add
Githoe Gimes
Crescent Beach
Balls 1st add
Githoe Gimes
Crescent Beach
Balls 1st add
Githoe Gimes
Crescent Beach
Balls 1st add
Githoe Gimes
Crescent Beach
Balls 1st add
Githoe Gimes

IN WHOSE NAME ASSESSED	DESCRIPTION OF PROPERTY			No. School District	Indicate Homestead Yes or No	Agricultural Use Yes or No	Indicate Type of Property	TRUE AND FULL VALUATIONS				ASSESSED VALUATIONS						SOLD FOR TAXES	VALUATIONS BY SCHOOL DISTRICTS AS EQUALIZED BY DEPARTMENT OF TAXATION						State Tax on Non-Homestead	SPECIAL TAXES	SPECIAL TAXES	TOTAL TAXES	PAID	WHEN PAID	Number of Receipt	March Settlement 1962	June Settlement 1962	November Settlement 1962	Penalty	Collections to First Monday in January 1963	Penalty	Delinquent on First Monday in January 1963	Total Delinquent Tax and Penalty	REMARKS					
	SUBDIVISION	Sec. or Lot	Town or Block					Number of Acres of Land	LAND Exclusive of Structures and Improvements	BUILDINGS and Other Structures	MACHINERY Permanently Attached to Real Estate	TOTAL True and Full Value	RURAL						TOTAL ASSESSED VALUE	Total Assessed Value as Equalized by the Board of Review	District No.	Rate	District No.	Rate																	District No.	Rate	District No.	Rate	
													Homestead Up to \$4,000 20%	Over \$4,000 and Non-Homestead 33 1/3%	Timber Land Class 3c 20%	Homestead Up to \$4,000 25%	Over \$4,000 and Non-Homestead 40%																												MACHINERY Permanently Attached to Real Estate 33 1/3%
Alice L. Jensen			20	1	119	NO	YES	R										119																											
Ray M. & Bernice Howell			21	2		NO	NO	C																												10939									
" " "			22	3		NO	YES	R																												14103									
" " "			23	4		NO	"	"																																					
Frank & Elizabeth Hirschfeld			24	5		NO	"	"																																					
" " "			25	6		NO	YES	R																												10943									
" " "			26	7		NO	"	"																																					
Harold H. & Sylvia Haase	E. 15' 07'		26	8		NO	"	"																																					

District No.	District No.	District No.	District No.	District No.	District No.	Tax Including State Homestead	State Tax on Non-Homestead	SPECIAL TAXES	SPECIAL TAXES	TOTAL TAXES	PAID	WHEN PAID	Number of Receipt	March Settlement 1962	June Settlement 1962	November Settlement 1962	Penalty	Collections to First Monday in January 1963	Penalty	Delinquent on First Monday in January 1963	Total Delinquent Tax and Penalty	REMARKS						
																							Rate	Rate	Rate	Rate	Rate	Rate
																							Mills	Mills	Mills	Mills	Mills	Mills
1	119					5972	200			6172	1	PAID IN FULL MAY 7 1962	9767		6172							10939						
2	119					10168	312			10480	2	PAID IN FULL MAY 4 1962			10480							14103						
3	119					3068	104			3172	3	PAID IN FULL MAY 4 1962	9730		3172													
4	119					3068	104			3172	4	PAID IN FULL MAY 4 1962			3172													
5	119					652	22			674	5	PAID IN FULL MAY 2 1962										10943						
6	119					19108	642			19750	6	PAID IN FULL MAY 2 1962	112354		23774													
7	119					2660	90			2750	7	PAID IN FULL MAY 2 1962																
8	119					9564	322			9886	8	PAID IN FULL MAY 1 1962	4632		9886							11104						

Smokers Add'n
to Walker
Belford's 1st. Add'n.
Crescent Beach
1st. Add'n.
Wm. Ba. Ma.

Assessment Roll and Tax List of Real Property in the Town of Shingobee

Cass County, Minnesota, for Taxes for the Year 1961.

FORM 50, BICKLER-DAVIS CO., MINNEAPOLIS

IN WHOSE NAME ASSESSED	DESCRIPTION OF PROPERTY	Sec. or Lot	Town or Block	Rng.	Number of Acres of Land	No. School District	Indicate Homestead Yes or No	Agricultural Rec. Yes or No	Indicate Type of Property	TRUE AND FULL VALUATIONS					ASSESSED VALUATIONS					SOLD FOR TAXES	VALUATIONS BY SCHOOL DISTRICTS AS EQUALIZED BY DEPARTMENT OF TAXATION						State Tax on Non-Homestead	SPECIAL TAXES	SPECIAL TAXES	TOTAL TAXES	PAID	WHEN PAID	Number of Receipts	March Settlement 1962	June Settlement 1962	Penalty	November Settlement 1962	Penalty	Collections to First Monday in January 1963	Penalty	Delinquent on First Monday in January 1963	Total Delinquent Tax and Penalty	REMARKS									
										LAND Exclusive of Structures and Improvements	BUILDINGS and Other Structures	MACHINERY Permanently Attached to Real Estate	TOTAL True and Full Value	RURAL		ALL OTHER			TOTAL ASSESSED VALUE		Total Assessed Value as Equalized by the Board of Review	Final Equalized Value	District No.	Rate	District No.	Rate																		District No.	Rate	District No.	Rate	Tax Including State Homestead	Mills			
														Homestead Up to \$4,000 20%	Over \$4,000 and Non-Homestead 33 1/3%	Timber Land Class 3e 20%	Homestead Up to \$4,000 25%	Over \$4,000 and Non-Homestead 40%																																MACHINERY Permanently Attached to Real Estate 33 1/3%	Seasonal and Recreational Cabins 33 1/3%	District No.
Crescent Beach, 1st Addn PART OF LOT 3 - SEC. 26-141-31	Ruth C. & Owen C. Nayckhoff	1	27			119	NO	NO	L																																											
	Ethel C. Burns	2	28				YES	"	R																																											
	Harry L. & Florence Storms Spring	3	29				YES	"	"																																											
	Edmund C. & Mathilda J. Thomas	4	30				YES	"	"																																											
	" " " "	5	31				YES	"	L																																											
	" " " "	6	32				NO	YES	NO	C																																										
	E.A. & Ruby Dorey	7	33				NO	YES	R																																											
		8																																																		
	9																																																			
	10																																																			
	11																																																			
	12																																																			
	13																																																			
	14																																																			
	15																																																			
	16																																																			
	17																																																			
	18																																																			
	19																																																			
	20																																																			

142
Crescent Beach
1st Addn.

Shingobee
Beach
Snooks's Add'n
to Haller
Belwood's 1st Add'n
to Shingobee Island
Par
Hanson
No. Be - No - No Bay

Assessment Roll and Tax List of Real Property in the Town of Sunrice, Cass County, Minnesota

Cass County, Minnesota, for Taxes for the Year 1961.

Table with columns: IN WHOSE NAME ASSESSED, DESCRIPTION OF PROPERTY, TRUE AND FULL VALUATIONS, ASSESSED VALUATIONS, VALUATIONS BY SCHOOL DISTRICTS AS EQUALIZED BY DEPARTMENT OF TAXATION, SOLD FOR TAXES, PAID, WHEN PAID, March Settlement, June Settlement, November Settlement, Collections to First Monday in January 1963, Delinquent on First Monday in January 1963, Total Delinquent Tax and Penalty, REMARKS.

Assessment Roll and Tax List of Real Property in the Town of Sunrise of Stingobee County, Minnesota

* Indicate Type of Property: R-Residential, C-Commercial, I-Industrial, U-Utility, F-Farm, L-Lakeshore, T-Timber, M-Mineral

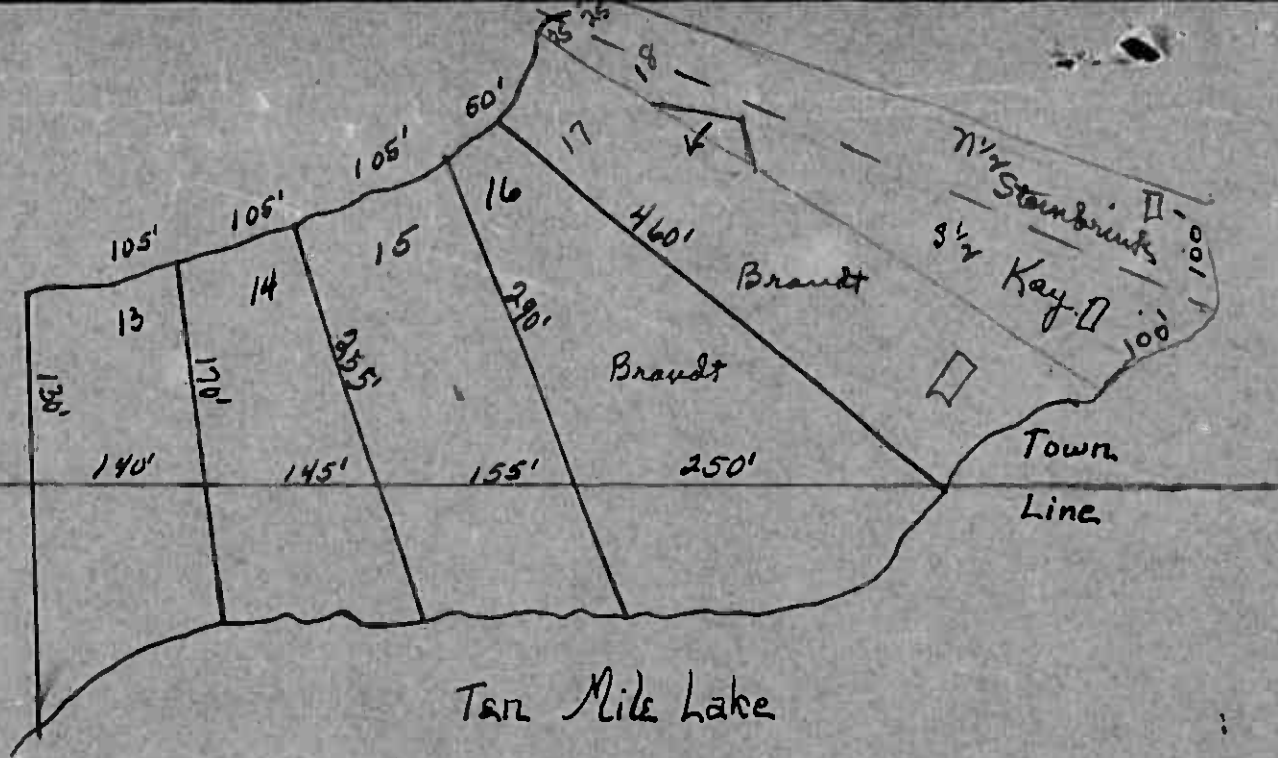
Table with columns: IN WHOSE NAME ASSESSED, SUBDIVISION, DESCRIPTION OF PROPERTY, TRUE AND FULL VALUATIONS, ASSESSED VALUATIONS, and FINAL EQUALIZED VALUE. Includes handwritten entries for 'Hilding A. & Jeanette Johnson'.

Cass County, Minnesota, for Taxes for the Year 1961.

Table with columns: SOLD FOR TAXES, VALUATIONS BY SCHOOL DISTRICTS AS EQUALIZED BY DEPARTMENT OF TAXATION, TAXES, PAID, WHEN PAID, and REMARKS. Includes handwritten entries for 'Hilding A. & Jeanette Johnson'.

Shingbee Twp.

Hiram Twp.



Lots 13-14-15-16

Chariton Beach

Assessment Roll and Tax List of Real Property in the Town of Singabe

Cass County, Minnesota, for Taxes for the Year 1961.

* Indicate Type of Property: R-Residential, C-Commercial, I-Industrial, U-Utility, F-Farm, L-Lakeshore, T-Timber, M-Mineral

Table with columns for Description of Property, True and Full Valuations (Rural, All Other, Final Equalized Value), Valuations by School Districts, and Taxes. Includes handwritten entries for names like Peggy S. Cowderf, R. G. Bullock, and George Helen Petroff.

142-31
Gitchie Bunch
Charlton Heights
Smokys Add'n.
to Walker
P. Brass
Baleford's 1st. Add'n.
to Singabe Island
Park Point
Wa-Ba-Na-Bay

Christmas Point
Blaug's
Personal
Ranson's
Point

Assessment Roll and Tax List of Real Property in the

Town of Shingobee

Cass County, Minnesota, for Taxes for the Year 1961.

* Indicate Type of Property: R-Residential, C-Commercial, Industrial, U-Utility, F-Farm, L-Lakeshore, T-Timber, M-Mineral

DESCRIPTION OF PROPERTY					TRUE AND FULL VALUATIONS											VALUATIONS BY SCHOOL DISTRICTS AS EQUALIZED BY DEPARTMENT OF TAXATION										PAID	WHEN PAID	Number of Receipt	March Settlement 1962	June Settlement 1962	November Settlement 1962	Penalty	Collections to First Monday in January 1963	Penalty	Delinquent on First Monday in January 1963	Total Delinquent Tax and Penalty	REMARKS									
IN WHOSE NAME ASSESSED	SHINGOBEE KNOWN SUBDIVISION	Sec. of Lot	Town or Block	Acreage	LAND Exclusive of Structures and Improvements	BUILDINGS and Other Structures	MACHINERY Permanently Attached to Real Estate	TOTAL True and Full Value	RURAL					TOTAL ASSESSED VALUE	Total Assessed Value as Equalized by the Board of Review	FINAL EQUALIZED VALUE	SOLD FOR TAXES	VALUATIONS BY SCHOOL DISTRICTS AS EQUALIZED BY DEPARTMENT OF TAXATION						Tax Including State Homestead	State Tax on Non-Homestead													SPECIAL TAXES	SPECIAL TAXES	TOTAL TAXES						
									Homestead Up to \$4,000 20%	Over \$4,000 and Non-Homestead 33 1/2%	Timber Land Class 3e 20%	Homestead Up to \$4,000 25%	Over \$4,000 and Non-Homestead 40%					MACHINERY Permanently Attached to Real Estate 33 1/2%	Seasonal and Recreational Cabins 33 1/2%	District No. Rate	District No. Rate	District No. Rate	District No. Rate																		District No. Rate	District No. Rate				
									Dollars	Dollars	Dollars	Dollars	Dollars					Dollars	Dollars	Dollars	Dollars	Dollars	Dollars																		Dollars	Dollars	Dollars	Dollars	Dollars	Dollars
<i>Mario Jeschion</i>	<i>PART OF GOVT LOT 6 - SEC 11-141-31</i>																																													
<i>James Lee + Bonnie E. Jensen</i>		1		<i>119</i>																																										
"		2																																												
"		3																																												
"		4																																												
"		5																																												
<i>James Lee + Bonnie E. Jensen</i>		6																																												
"		7																																												
"		8																																												
"		9																																												
"		10																																												
<i>James Lee + Bonnie E. Jensen</i>		11																																												
"		12																																												
"		13																																												
		14																																												
		15																																												
		16																																												
		17																																												
		18																																												
		19																																												
		20																																												

142-31
141-31
Shady Lane
Christmas Point
Chickie Sumner
Snoo Shingobee
to Anoll
C. B. Brary
Belford's 1st. Add'n.
to Shingobee Island
Park Point
Hanson's Point

Personal

