

Assessor's Return of Exempt Real Property in the Town of Springdale County of Grant, Minnesota, for the Year 1956

NAMES OF OWNERS	DESCRIPTION	Sec. of Lot	Town of Block	Range	No. of Acres	FOR WHAT PURPOSE USED	TRUE AND FULL VALUATIONS				ASSESSED VALUATIONS		REMARKS
							LAND Exclusive of Structures and Improvements Dollars	BUILDINGS and Other Structures Dollars	MACHINERY Permanently Attached to Real Estate Dollars	TOTAL True and Full Value Dollars	Rural Including Machinery 33 1/3%	All Other 40%	
Ind. Conv. School Dist. # 5	E 1/2 of N 1/4 of S 1/4	1	141	31			150		150	60		1	
Ind. Conv. School Dist. # 5	N 1/2 of N 1/4 of S 1/4	1	141	31			150		150	60		1	
Catholic Church		13	142	31	1		102	1,200	1,302	434		5	
Episcopal Diocese of Duluth		13	142	31	1		50	2,350	2,400	900		5	
Village of Walker	N 1/2 of S 1/4 of S 1/4	21	142	31	20		249		249	83		4	
Village of Walker	N 532' of S 1/4 of S 1/4 less N 515.5' of S 1/4	21	142	31	5	Cemetery	102		102	31		8	
Village of Walker	N 515.5' of E 1/4 of S 1/4 S 1/4 of S 1/4	21	142	31			102		102	34		5	
Ind. School Dist. # 5	500' of S 1/4 of S 1/4	22	142	31	13		324		324	108		1	
Village of Walker	1 1/2 ac. of S 1/4 of S 1/4 less sold	22	142	31	1.50		39		39	13		4	
Village of Walker	S 1/4 of N 1/4	27	142	31	40		475	650	1,125	375		4	
									6,000	2,000			

Assessor's Return of Exempt Real Property in the Town of Shingobee County of Cass, Minnesota, for the Year 1956

FORM 23-1-56-1-56

NAMES OF OWNERS	DESCRIPTION				TRUE AND FULL VALUATIONS				ASSESSED VALUATIONS		REMARKS		
	SUBDIVISION	Sec. or Lot	Town or Block	Range	No. of Acres		LAND Exclusive of Structures and Improvements Dollars	BUILDINGS and Other Structures Dollars	MACHINERY Permanently Attached to Real Estate Dollars	TOTAL True and Full Value Dollars		Rural Including Machinery 33 1/3%	All Other 40%
					Acres	100ths							
<u>Village of Walker</u>	<u>W4 of Sec 4</u>	<u>27</u>	<u>142</u>	<u>20</u>	<u>40</u>		<u>402</u>		<u>6003</u>	<u>201</u>			
									<u>6405</u>	<u>2135</u>			

Assessor's Return of Exempt Real Property in the _____ of _____ County of _____, Minnesota, for the Year 1956

FORM 23-1-56-1-56

NAMES OF OWNERS	DESCRIPTION				TRUE AND FULL VALUATIONS				ASSESSED VALUATIONS		REMARKS		
	SUBDIVISION	Sec. or Lot	Town or Block	Range	No. of Acres		LAND Exclusive of Structures and Improvements Dollars	BUILDINGS and Other Structures Dollars	MACHINERY Permanently Attached to Real Estate Dollars	TOTAL True and Full Value Dollars		Rural Including Machinery 33 1/3%	All Other 40%
					Acres	100ths							

Real Estate

Assessor's Return

COLLECTIONS OF TAXES OF 1956

Town

OF *Shingobee*

CASS COUNTY, MINNESOTA

FUNDS	MARCH SETTLEMENT 1956	JUNE SETTLEMENT 1956	NOV. SETTLEMENT 1956	Amount Collected from Nov. 1955 to First Monday in Jan. 1956	REDUCTIONS	Total Reductions and Collected	BALANCE UNCOLLECTED	ADDITIONS	Total Uncollected to First Monday in January, 1956
State—Non-Homestead	12437	29910	13022	116					
State—Homestead	9187	27236	15258	184					
County Revenue	65302	207796	108448	1277					
County Road and Bridge	34197	101188	56788	680					
County Welfare	115025	366020	197028	2285					
County Bond and Interest	117664	57372	30996	372					
<i>A+B, City</i>	4822	15346	8011	97					
<i>Steel City</i>	17411	55403	28914	346					
<i>Cass Co. Agric.</i>	1206	3837	2002	24					
Town Revenue	1234	23020	12014	174					
Town Road and Bridge	22737	73070	49057	575					
Town Drag	2412	7673	4004	49					
Town State Loan	6028	19184	10013	120					
<i>Phone Cemetery</i>	6029	7673	10013	120					
	2411	14184	4004	49					
School Local 1 Mill	2411	7673	4005	49					
School Special	107897	340476	178112	2115					
School State Loan									
Deficiency	67407	214493	111946	1340					
Tuition									
Transportation	1761	5601	2924	33					
<i>C. O.</i>	53587	170519	88473	1066					
<i>D+Int.</i>	18605	46470	24255	296					
	578959	1828772	952808	11357					

	SCHOOL DISTRICT NO.	LOCAL 1 MILL	SPECIAL	STATE LOAN	Deficiency	Transp.	C. O.	D+Int.	TOTALS
MARCH SETTLEMENT	9#5 Ka#5	507 1904	62086		14180 53227	1370	11273 42314	3073 11532	42084 205576
JUNE SETTLEMENT	Totals 9#5 Ka#5	2411 1728 5945	107989 43196 277285		67407 48293 166200	1761	53587 38392 132127	14605 10463 36007	247660 143288 647784
NOVEMBER SETTLEMENT	Totals 9#5 Ka#5	7673 885 3120	340476 22125 155927		214493 24739 87207	5601	170519 19667 67326	46470 5361 18894	785232 73423 336872
NOVEMBER to JANUARY	Totals 9#5 Ka#5	4005 13 36	178112 288 1827		111946 323 1017	2724	88993 258 109	24255 69 227	410235 962 3937
ADDITIONS	Totals	49	2115		1340	33	1066	296	4899
REDUCTIONS	Totals								

Real Estate

11-2-31

Shingobee Island

11-2-31

Assessment Roll and Tax List of Real Property in the Town of Shingobee, Cass County, Minnesota, for Taxes for the Year 1956.

Indicate Type of Property: R-Residential, C-Commercial, I-Industrial, U-Utility, F-Farm, L-Lakeshore, T-Timber, M-Mineral

Table with columns: IN WHOSE NAME ASSESSED, TO WHOM TRANSFERRED, SUBDIVISION, TRUE AND FULL VALUATIONS (LAND, BUILDINGS, MACHINERY, TOTAL), ASSESSED VALUATIONS (RURAL, ALL OTHER, MACHINERY, TOTAL ASSESSED), VALUATIONS BY SCHOOL DISTRICTS AS EQUALIZED BY DEPARTMENT OF TAXATION, SPECIAL TAXES, TOTAL TAXES, PAID WHEN PAID, Number of Receipts, March Settlement 1957, June Settlement 1957, November Settlement 1957, Collections to First Monday in January 1958, Delinquent on First Monday in January 1958, Total Delinquent Tax and Penalty, REMARKS.

Assessment Roll and Tax List of Real Property in the Town of Springabe of Springabe

Indicate Type of Property: R-Residential, C-Commercial, I-Industrial, U-Utility, F-Farm, L-Lakeshore, T-Timber, M-Mineral

Table with columns: IN WHOSE NAME ASSESSED, TO WHOM TRANSFERRED, DESCRIPTION OF PROPERTY, TRUE AND FULL VALUATIONS, ASSESSED VALUATIONS, and FINAL EQUALIZED VALUE.

Cass County, Minnesota, for Taxes for the Year 1956.

Table with columns: SOLD FOR TAXES, VALUATIONS BY SCHOOL DISTRICTS AS EQUALIZED BY DEPARTMENT OF TAXATION, SPECIAL TAXES, TOTAL TAXES, PAID, WHEN PAID, Number of Receipt, March Settlement 1957, June Settlement 1957, November Settlement 1957, Collections to First Monday in January 1955, Delinquent on First Monday in January 1955, Total Delinquent Tax and Penalty, REMARKS.

Assessment Roll and Tax List of Real Property in the Towns of Shingobe, Cass County, Minnesota, for Taxes for the Year 1956.

Table with columns: IN WHOSE NAME ASSESSED, TO WHOM TRANSFERRED, DESCRIPTION OF PROPERTY, TRUE AND FULL VALUATIONS, ASSESSED VALUATIONS, VALUATIONS BY SCHOOL DISTRICTS AS EQUALIZED BY DEPARTMENT OF TAXATION, TAXES, PAID, WHEN PAID, Number of Receipt, March Settlement 1957, June Settlement 1957, November Settlement 1957, Collections to First Monday in January 1958, Delinquent on First Monday in January 1958, Total Delinquent Tax and Penalty, REMARKS.

Shingobe Island, Chipewa Point, Kabekona Springs, Otterway Beach

Assessment Roll and Tax List of Real Property in the Town of Shingobee

Cass County, Minnesota, for Taxes for the Year 1956.

Table with columns: IN WHOSE NAME ASSESSED, TO WHOM TRANSFERRED, DESCRIPTION OF PROPERTY, TRUE AND FULL VALUATIONS, ASSESSED VALUATIONS, VALUATIONS BY SCHOOL DISTRICTS AS EQUALIZED BY DEPARTMENT OF TAXATION, TAXES, PAID, WHEN PAID, Number of Receipt, March Settlement 1957, June Settlement 1957, November Settlement 1957, Collections to First Monday in January 1958, Delinquent on First Monday in January 1958, Total Delinquent Tax and Penalty, REMARKS.

Assessment Roll and Tax List of Real Property in the Town of Shingobee

Cass County, Minnesota, for Taxes for the Year 1956.

Indicate Type of Property: R-Residential, C-Commercial, I-Industrial, U-Utility, F-Farm, L-Lakeshore, T-Timber, M-Mineral

Main table with columns: IN WHOSE NAME ASSESSED, TO WHOM TRANSFERRED, DESCRIPTION OF PROPERTY, TRUE AND FULL VALUATIONS, ASSESSED VALUATIONS, VALUATIONS BY SCHOOL DISTRICTS AS EQUALIZED BY DEPARTMENT OF TAXATION, TAXES, PAID, WHEN PAID, etc.

Assessment Roll and Tax List of Real Property in the Town of Shingobee, Cass County, Minnesota, for Taxes for the Year 1956.

Cass County, Minnesota, for Taxes for the Year 1956.

Form 501 (5-55) ... Indicate Type of Property: R-Residential, C-Commercial, I-Industrial, U-Utility, F-Farm, L-Lakeshore, T-Timber, M-Mineral

Main data table with columns: IN WHOSE NAME ASSESSED, TO WHOM TRANSFERRED, DESCRIPTION OF PROPERTY, TRUE AND FULL VALUATIONS, ASSESSED VALUATIONS, VALUATIONS BY SCHOOL DISTRICTS AS EQUALIZED BY DEPARTMENT OF TAXATION, TAXES, PAID, WHEN PAID, etc.

Shingobee Island, Chippewa Point, Lakebecona Springs, Ojibway Beach

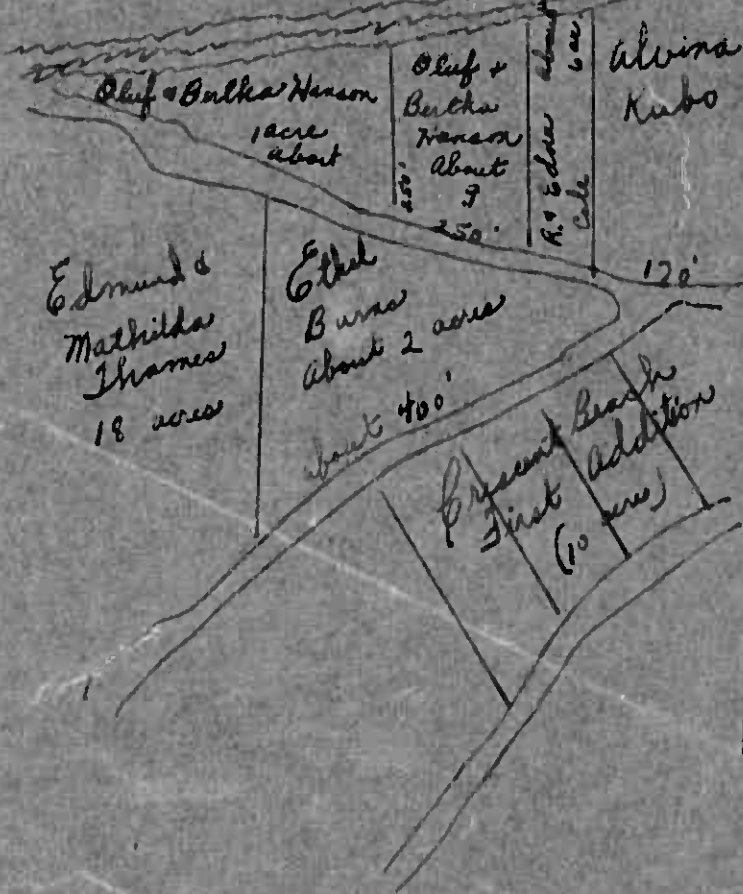
36.84 added, 36.84 added

Lat 3-141-31

Portage Lake

Sec. 26

Sec. 25



This is according to information from H. W. Jensen. Total acreage of Lat 3, Sec 26 is 3375 acres.

Assessment Roll and Tax List of Real Property in the Town of Shingobee of Shingobee

Cass County, Minnesota, for Taxes for the Year 1956

Form 53CD (56) MINN. STATE GOVERNMENT, MINNEAPOLIS. * Indicate Type of Property: R-Residential, C-Commercial, I-Industrial, U-Utility, F-Farm, D-Lakeshore, T-Timber, M-Mineral

Table with columns: IN WHOSE NAME ASSESSED, TO WHOM TRANSFERRED, DESCRIPTION OF PROPERTY, TRUE AND FULL VALUATIONS, ASSESSED VALUATIONS, and FINAL EQUALIZED VALUE. Includes handwritten entries for Ethel B. Burns and Oluf + Bertha Hansons.

Table with columns: VALUATIONS BY SCHOOL DISTRICTS AS EQUALIZED BY DEPARTMENT OF TAXATION, TAX INCLUDING STATE HOMESTEAD, SPECIAL TAXES, TOTAL TAXES, PAID, WHEN PAID, and REMARKS. Includes handwritten entries for tax amounts and payment dates.

Assessment Roll and Tax List of Real Property in the Town of Springdale

Cass County, Minnesota, for Taxes for the Year 1956.

Table with columns: IN WHOSE NAME ASSESSED, TO WHOM TRANSFERRED, DESCRIPTION OF PROPERTY, TRUE AND FULL VALUATIONS, ASSESSED VALUATIONS, VALUATIONS BY SCHOOL DISTRICTS AS EQUALIZED BY DEPARTMENT OF TAXATION, TAXES, PAID, WHEN PAID, Number of Receipt, March Settlement 1957, June Settlement 1957, Penalty, November Settlement 1957, Penalty, Collections to First Monday in January 1958, Delinquent on First Monday in January 1958, Total Delinquent Tax and Penalty, REMARKS.

(Continued on next page)

Springdale Island, Chipewa Point, Lake Superior Springs, Ojibway Beach

W 1/2 of Lot. 1

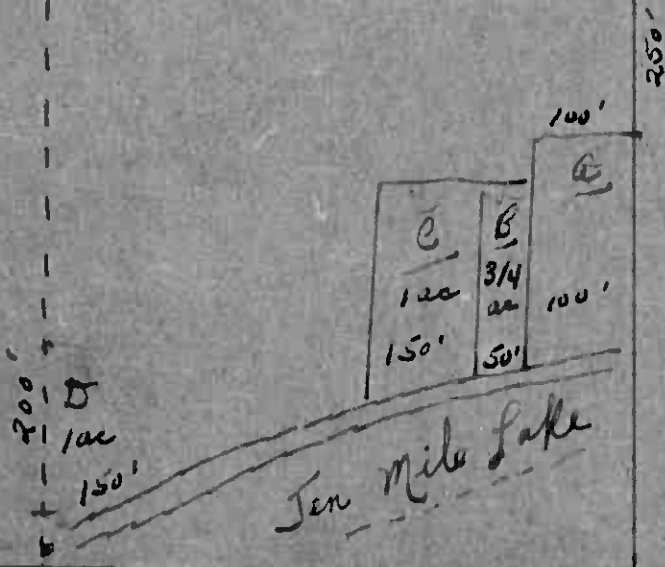
19.5 acs

15.81 acs.

H. Rose

~~Ernest M & Esther C~~
Jensen
Schmitz

- A. - J Kolderie
- B. - "
- C. - Elmer Nordland
- D. - Henry Rose.
- E. - Ernest & Esther Jensen



Except for distance given the map is not apart as we dont have the distance of lake.

Lot 1 Sec. 34 - 141-31

Assessment Roll and Tax List of Real Property in the Town of Shingobee

Cass County, Minnesota, for Taxes for the Year 1956.

Form 501 (66) ... Indicate Type of Property: R-Residential, C-Commercial, I-Industrial, U-Utility, F-Farm, L-Lakeshore, T-Timber, M-Mineral

Main table with columns: IN WHOSE NAME ASSESSED, TO WHOM TRANSFERRED, DESCRIPTION OF PROPERTY, TRUE AND FULL VALUATIONS, ASSESSED VALUATIONS, VALUATIONS BY SCHOOL DISTRICTS AS EQUALIZED BY DEPARTMENT OF TAXATION, SOLD FOR TAXES, PAID, WHEN PAID, etc.

Theodore & Helen G. Kaldere
Elmer Hardlund

Theodore & Helen G. Kaldere

Genie L. Benson, Stanley H. Taylor

Shingobee Island, Chipewa Point, Ad. Kabekona Springs, Highway, Beach

Assessment Roll and Tax List of Real Property in the Town of Shingobee

Indicate Type of Property: R-Residential, C-Commercial, I-Industrial, U-Utility, F-Farm, L-Lakeshore, T-Timber, M-Mineral

Table with columns: IN WHOSE NAME ASSESSED, TO WHOM TRANSFERRED, DESCRIPTION OF PROPERTY, TRUE AND FULL VALUATIONS, ASSESSED VALUATIONS, and FINAL EQUALIZED VALUE. Includes handwritten entries for various property owners like Leroy & Elsie H. Matson, Walter H. Earl, and U.S. of America.

Cass County, Minnesota, for Taxes for the Year 1956.

Table with columns: SOLD FOR TAXES, VALUATIONS BY SCHOOL DISTRICTS AS EQUALIZED BY DEPARTMENT OF TAXATION, TAX INCLUDING STATE HOMESTEAD, SPECIAL TAXES, TOTAL TAXES, PAID, WHEN PAID, Number of Receipt, March Settlement 1957, June Settlement 1957, November Settlement 1957, Collections to First Monday in January 1956, Delinquent on First Monday in January 1956, Total Delinquent Tax and Penalty, and REMARKS. Includes handwritten entries for various tax payments and abates.

Assessment Roll and Tax List of Real Property in the Town of Shingobee

Cass County, Minnesota, for Taxes for the Year 1956.

Indicate Type of Property: R-Residential, C-Commercial, I-Industrial, U-Utility, F-Farm, L-Lakeshore, T-Timber, M-Mineral

Main table with columns: IN WHOSE NAME ASSESSED, TO WHOM TRANSFERRED, DESCRIPTION OF PROPERTY, TRUE AND FULL VALUATIONS (RURAL, ALL OTHER, MACHINERY), ASSESSED VALUATIONS, VALUATIONS BY SCHOOL DISTRICTS AS EQUALIZED BY DEPARTMENT OF TAXATION, SPECIAL TAXES, TOTAL TAXES, PAID, WHEN PAID, Number of Receipt, March Settlement 1957, June Settlement 1957, November Settlement 1957, Collections to First Monday in January 1958, Delinquent on First Monday in January 1958, Total Delinquent Tax and Penalty, REMARKS.

(Continued on next page)

Shingobee Island, Chippeewa Point, Kabekona Springs, Otjibway Beach

Assessment Roll and Tax List of Real Property in the Town of Shingobee, Cass County, Minnesota, for Taxes for the Year 1956.

Cass County, Minnesota, for Taxes for the Year 1956.

Form 501 (1956) ILLINOIS STATE BOARD OF EQUALIZATION

12-31

Table with columns: IN WHOSE NAME ASSESSED, TO WHOM TRANSFERRED, DESCRIPTION OF PROPERTY, TRUE AND FULL VALUATIONS, ASSESSED VALUATIONS, VALUATIONS BY SCHOOL DISTRICTS AS EQUALIZED BY DEPARTMENT OF TAXATION, SOLD FOR TAXES, SPECIAL TAXES, TOTAL TAXES, PAID, WHEN PAID, Number of Receipt, March Settlement 1957, June Settlement 1957, November Settlement 1957, Collections to First Monday in January 1958, Delinquent on First Monday in January 1958, Total Delinquent Tax and Penalty, REMARKS.

Ole & Inez Berg
Walter & Magdalene H. Leslie
Marjette Swackhamer
Delphine & Eva Johnson

Robert & Bessie Cluth

Ole & Inez M. Berg

Billie V. Van Dyke & Chas. Van Dyke

Shingobee Island
Hippens Point
Kabecona Springs
Ojibway
Beach

Assessment Roll and Tax List of Real Property in the Town of Shingobee

Cass County, Minnesota, for Taxes for the Year 1956.

Indicate Type of Property: R-Residential, C-Commercial, I-Industrial, U-Utility, F-Farm, L-Lakeshore, T-Timber, M-Mineral

Table with columns: IN WHOSE NAME ASSESSED, TO WHOM TRANSFERRED, SUBDIVISION, TRUE AND FULL VALUATIONS (RURAL, ALL OTHER, TOTAL ASSESSED), VALUATIONS BY SCHOOL DISTRICTS AS EQUALIZED BY DEPARTMENT OF TAXATION, TAXES (SOLD FOR, SPECIAL, TOTAL, PAID, WHEN PAID), and REMARKS. Includes handwritten entries for names like Simon, Thompson, Leslie, and Peterson.

- #1 R.A. & S.W. Simonson
- " #2 " " "
- " #3 " " "
- " #4 A.J. Thompson
- " #5 " " "
- " #6 " " "

- Red #1 Earl & Amy S. Luock
- " #2 " " "
- " #3 " " "
- " #4 " " "
- " #5 " " "
- " #6 " " "
- " #7 Arthur H. Peterson

- Blue #1 Bert & Louise Woodford
- " #2 " " "
- " #3 " " "
- " #4 " " "
- " #5 " " "
- " #6 " " "
- " #7 Alice Norman
- " #8 " " "
- " #9 " " "

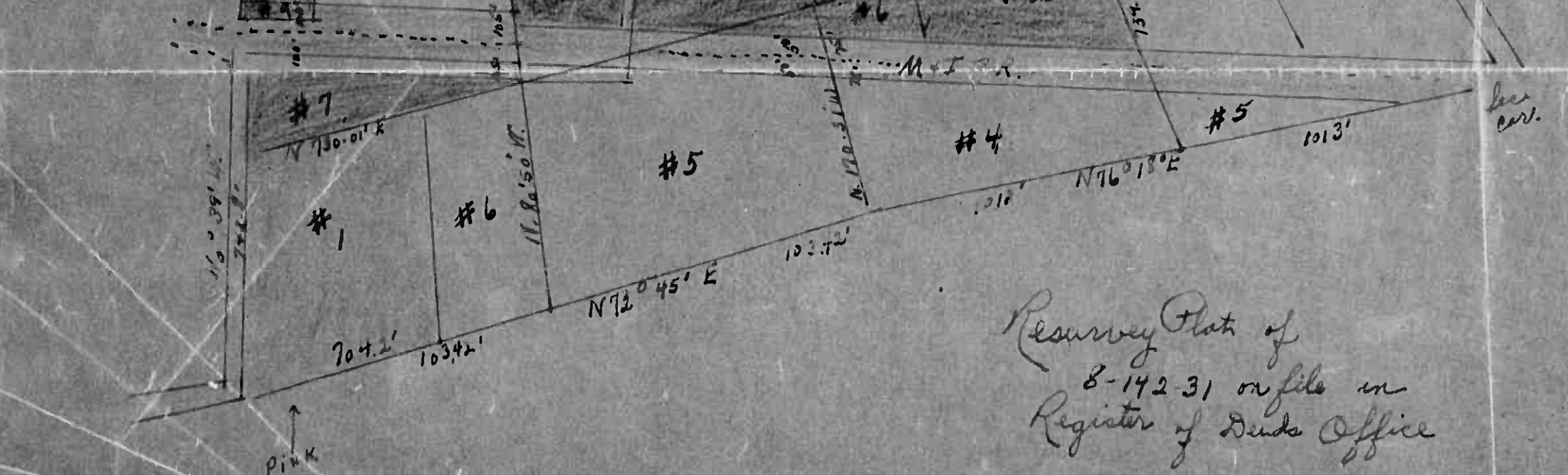
- White #1 State of Minn.
- " #2 Maud L. & Ruth to Florin
- " #3 " " "
- " #4 James R. Fear
- " #5 State of Minn.

- Pink #1 Walter J. & Magdaline Leslie
- Green #1 Peatled

KABEKONH BAY

Lot 1
10.75 ac
#1

Lot 5 is not shown
in full on this copy.



Resurvey Plat of
8-142-31 on file in
Register of Deeds Office

Assessment Roll and Tax List of Real Property in the Town of Shingobee

Cass County, Minnesota, for Taxes for the Year 1956.

Form 96D (56) ... Indicate Type of Property: R-Residential, C-Commercial, I-Industrial, U-Utility, F-Farm, L-Lakeshore, T-Timber, M-Mineral

Table with columns: IN WHOSE NAME ASSESSED, TO WHOM TRANSFERRED, DESCRIPTION OF PROPERTY, TRUE AND FULL VALUATIONS, ASSESSED VALUATIONS, VALUATIONS BY SCHOOL DISTRICTS AS EQUALIZED BY DEPARTMENT OF TAXATION, SOLD FOR TAXES, PAID, WHEN PAID, etc.

Assessment Roll and Tax List of Real Property in the Town of Shingobee

Cass County, Minnesota, for Taxes for the Year 1956.

Form 300 (5-57) MINN. STAT. ANN. § 261.01, SUBCHAPTER 1

Indicate Type of Property: R-Residential, C-Commercial, I-Industrial, U-Utility, F-Farm, L-Lakeshore, T-Timber, M-Mineral

Table with columns: IN WHOSE NAME ASSESSED, TO WHOM TRANSFERRED, DESCRIPTION OF PROPERTY, TRUE AND FULL VALUATIONS, ASSESSED VALUATIONS, VALUATIONS BY SCHOOL DISTRICTS AS EQUALIZED BY DEPARTMENT OF TAXATION, TAXES, PAID, WHEN PAID, Number of Receipt, March Settlement 1957, June Settlement 1957, November Settlement 1957, Collections to First Monday in January 1958, Delinquent on First Monday in January 1958, Total Delinquent Tax and Penalty, REMARKS.

(Continued on next page)

Shingobee Island, Chippewa Point, Lakeoka Springs, Otterway, Beach

Assessment Roll and Tax List of Real Property in the Town of Shingobee of Shingobee County

Indicate Type of Property: R-Residential, C-Commercial, I-Industrial, U-Utility, F-Farm, L-Lakeshore, T-Timber, M-Mineral

Cass County, Minnesota, for Taxes for the Year 1956.

Table with columns: IN WHOSE NAME ASSESSED, TO WHOM TRANSFERRED, DESCRIPTION OF PROPERTY, TRUE AND FULL VALUATIONS, ASSESSED VALUATIONS, VALUATIONS BY SCHOOL DISTRICTS AS EQUALIZED BY DEPARTMENT OF TAXATION, TAXES, PAID, WHEN PAID, SPECIAL TAXES, TOTAL TAXES, MARCH SETTLEMENT 1957, JUNE SETTLEMENT 1957, PENALTY, COLLECTIONS TO FIRST MONDAY IN JANUARY 1958, DELINQUENT TAX AND PENALTY, REMARKS.

Assessment Roll and Tax List of Real Property in the Town of Shingobee

Indicate Type of Property: R-Residential, C-Commercial, I-Industrial, U-Utility, F-Farm, L-Lakeshore, T-Timber, M-Mineral

Table with columns: IN WHOSE NAME ASSESSED, TO WHOM TRANSFERRED, SUBDIVISION, TRUE AND FULL VALUATIONS, ASSESSED VALUATIONS, FINAL EQUALIZED VALUE. Includes handwritten entries for Leonard R. Guber, J.M. Teibel, Phillip J. Jewell, Robert & Helen Kadolph, Wiley F. & Gertrude B. Patten, Phillip Jewell, Phillip & Dorothy Jewell, State of Minnesota, Phillip & Dorothy Jewell, Phillip J. & Dorothy Jewell, U.S. of America.

Cass County, Minnesota, for Taxes for the Year 1956.

Table with columns: SOLD FOR TAXES, VALUATIONS BY SCHOOL DISTRICTS AS EQUALIZED BY DEPARTMENT OF TAXATION, SPECIAL TAXES, TOTAL TAXES, PAID, WHEN PAID, Number of Receipt, March Settlement 1957, June Settlement 1957, November Settlement 1957, Collections to First Monday in January 1958, Delinquent on First Monday in January 1958, Total Delinquent Tax and Penalty, REMARKS. Includes handwritten entries for various districts and tax amounts.

Assessment Roll and Tax List of Real Property in the Town of Shingobee

Cass County, Minnesota, for Taxes for the Year 1956.

Form 5C (50) (1955) - MINN. STAT. ANN. § 260.01

* Indicate Type of Property: R-Residential, C-Commercial, I-Industrial, U-Utility, F-Farm, L-Lakeshore, T-Timber, M-Mineral

Table with columns: IN WHOSE NAME ASSESSED, TO WHOM TRANSFERRED, DESCRIPTION OF PROPERTY, TRUE AND FULL VALUATIONS, ASSESSED VALUATIONS, VALUATIONS BY SCHOOL DISTRICTS AS EQUALIZED BY DEPARTMENT OF TAXATION, TAXES, PAID, WHEN PAID, Number of Receipt, March Settlement 1957, June Settlement 1957, November Settlement 1957, Penalty, Collections to First Monday in January 1958, Delinquent on First Monday in January 1958, Total Delinquent Tax and Penalty, REMARKS.

Arthur A. Scharff, Jr.
Ann J. Michael
Joyce Cole Andrews
D. E. Wakefield
Horace D. Riedle, adm. C. J. E. estate of John Andrews, Jr.
Arnie & Laverne R. Auelsgaard
Helen Lois & Henry Bakken, Jr.

Sum to each
Shingobee Island
Chipewa Point
Kaackona Springs
Ojibway
to Beach

Assessment Roll and Tax List of Real Property in the Town of Shingobee

Cass County, Minnesota, for Taxes for the Year 1956.

Indicate Type of Property: R-Residential, C-Commercial, I-Industrial, U-Utility, F-Farm, L-Lakeshore, T-Timber, M-Mineral

Table with columns: IN WHOSE NAME ASSESSED, TO WHOM TRANSFERRED, SUBDIVISION, DESCRIPTION OF PROPERTY, TRUE AND FULL VALUATIONS, ASSESSED VALUATIONS, VALUATIONS BY SCHOOL DISTRICTS AS EQUALIZED BY DEPARTMENT OF TAXATION, TAXES, PAID, WHEN PAID, Number of Receipt, March Settlement 1957, June Settlement 1957, Penalty, November Settlement 1957, Penalty, Collections to First Monday in January 1958, Penalty, Delinquent on First Monday in January 1958, Total Delinquent Tax and Penalty, REMARKS.

Shingobee Island, Shingobee Point, Chiopewa Point, Spring, Ojibway

Shingobee Island, Shingobee Point, Crescent Beach, Ad Crescent Beach, Shingobee Point, Ojibway

Assessment Roll and Tax List of Real Property in the Town of Shingobee

Cass County, Minnesota, for Taxes for the Year 1956.

Indicate Type of Property: R-Residential, C-Commercial, I-Industrial, U-Utility, F-Farm, L-Lakeshore, T-Timber, M-Mineral

Table with columns: IN WHOSE NAME ASSESSED, TO WHOM TRANSFERRED, DESCRIPTION OF PROPERTY, TRUE AND FULL VALUATIONS, ASSESSED VALUATIONS, VALUATIONS BY SCHOOL DISTRICTS AS EQUALIZED BY DEPARTMENT OF TAXATION, SOLD FOR TAXES, PAID, WHEN PAID, Number of Receipt, March Settlement 1957, June Settlement 1957, Penalty, November Settlement 1957, Collections to First Monday in January 1958, Delinquent on First Monday in January 1958, Total Delinquent Tax and Penalty, REMARKS.

Sunrise

Shingobee Island

Chilopeva Point

Chilopeva Springs

Ojibway

Shingobee Island

Chilopeva Point

Chilopeva Beach

Chilopeva Beach 1

Chilopeva Beach

Assessment Roll and Tax List of Real Property in the Town of Spring Lake of Spring Lake

Cass County, Minnesota, for Taxes for the Year 1956.

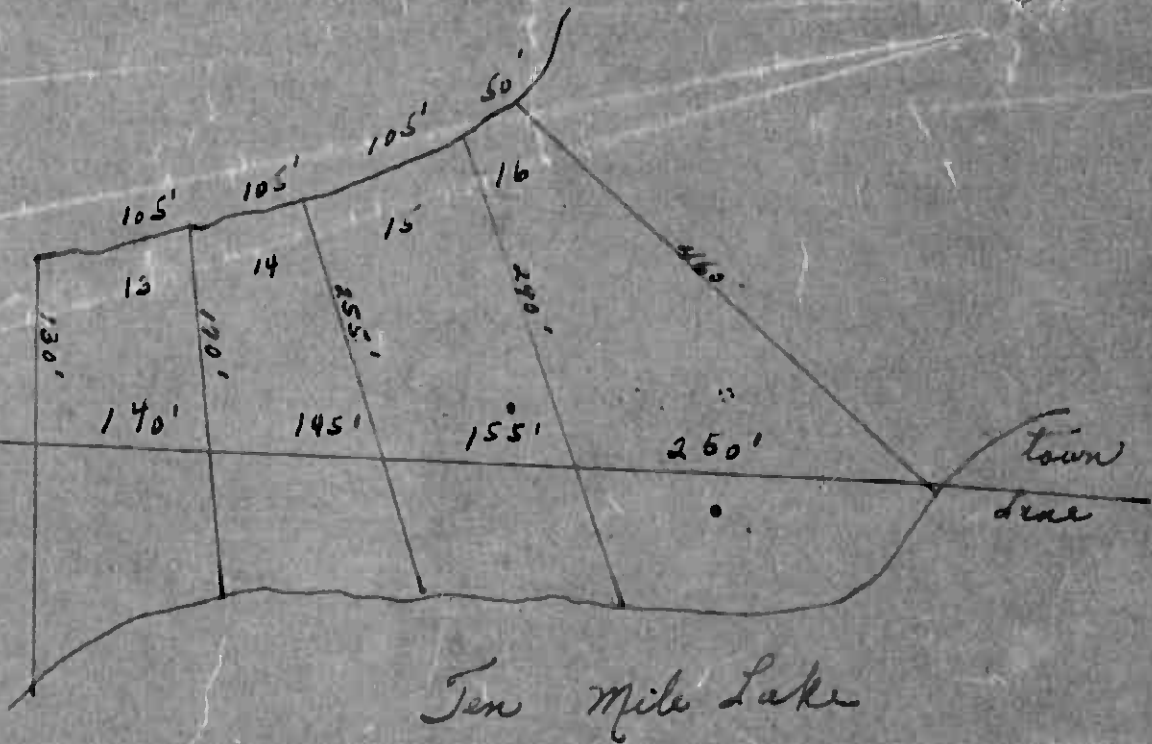
Indicate Type of Property: R-Residential, C-Commercial, I-Industrial, U-Utility, F-Farm, L-Lakeshore, T-Timber, M-Mineral

Table with columns: IN WHOSE NAME ASSESSED, TO WHOM TRANSFERRED, SUBDIVISION, DESCRIPTION OF PROPERTY, TRUE AND FULL VALUATIONS, ASSESSED VALUATIONS, VALUATIONS BY SCHOOL DISTRICTS AS EQUALIZED BY DEPARTMENT OF TAXATION, SOLD FOR TAXES, PAID, WHEN PAID, March Settlement 1957, June Settlement 1957, November Settlement 1957, Collections to First Monday in January 1958, Delinquent on First Monday in January 1958, Total Delinquent Tax and Penalty, REMARKS.

Vertical text on the left margin: Sunrise Heights, Breezy Point, Crescent Beach, Wa-lia-Ne-Bay

Vertical text on the right margin: Point, Chariton Beach, Hanson's Point, Shady Lane, Personal, to Walker

Shingobee Twp
Noram Twp.



Lots 13-14-15-16

Chariton Beach

Assessment Roll and Tax List of Real Property in the Town of Shingaber of Shingaber

Indicate Type of Property: R-Residential, C-Commercial, I-Industrial, U-Utility, F-Farm, L-Lakeshore, T-Timber, M-Mineral

Table with columns: IN WHOSE NAME ASSESSED, TO WHOM TRANSFERRED, DESCRIPTION OF PROPERTY, TRUE AND FULL VALUATIONS, ASSESSED VALUATIONS, and FINAL EQUALIZED VALUE. Includes handwritten entries for various property owners like Elsenpeter, Leonard, and Smith.

Cass County, Minnesota, for Taxes for the Year 1956.

Table with columns: SOLD FOR TAXES, VALUATIONS BY SCHOOL DISTRICTS AS EQUALIZED BY DEPARTMENT OF TAXATION, SPECIAL TAXES, TOTAL TAXES, PAID, WHEN PAID, Number of Receipt, March Settlement 1957, June Settlement 1957, November Settlement 1957, Collections to First Monday in January 1958, Delinquent on First Monday in January 1958, Total Delinquent Tax and Penalty, and REMARKS. Includes handwritten entries for tax payments and settlements.

Assessment Roll and Tax List of Real Property in the Town of Shingobee, Cass County, Minnesota, for Taxes for the Year 1956.

Form 30 (56) - REAL ESTATE TAXES, 1956. Indicate Type of Property: R-Residential, C-Commercial, I-Industrial, U-Utility, F-Farm, L-Lakeshore, T-Timber, M-Mineral

Cass County, Minnesota, for Taxes for the Year 1956.

Table with columns: IN WHOSE NAME ASSESSED, TO WHOM TRANSFERRED, SUNDIVISION, TRUE AND FULL VALUATIONS (RURAL, ALL OTHER, MACHINERY), ASSESSED VALUATIONS, VALUATIONS BY SCHOOL DISTRICTS AS EQUALIZED BY DEPARTMENT OF TAXATION, SOLD FOR TAXES, SPECIAL TAXES, TOTAL TAXES, PAID, WHEN PAID, Number of Receipts, March Settlement 1957, June Settlement 1957, November Settlement 1957, Collections to First Monday in January 1958, Delinquent on First Monday in January 1958, Total Delinquent Tax and Penalty, REMARKS.

Vertical text on the left margin: Park, Chariton Beach, Hanson's Point, Shady Lane, Smokey's Add'n, Belford's Plat of Shingobee Isla, Ne-Ba-Ne-Plat of Shingobee Isla.

Vertical text on the right margin: Special Cases, Personal.

