

Assessment & Tax List - 1961
Salem

Assessment of T

Form 314 MILLER-DAVIS COMPANY, MINNEAPOLIS

COLLECTIONS OF TAXES OF 1961, Town OF Salem, CASS COUNTY, MINNESOTA

| NAME OF OWNER | FUNDS | MARCH SETTLEMENT | JUNE SETTLEMENT | NOV. SETTLEMENT | Amount Collected from Nov. 1960 to First Monday in Jan. 1961 | REDUCTIONS | Total Reductions and Collected | BALANCE UNCOLLECTED | ADDITIONS | Total Uncollected to First Monday in January, 1961 |
|---------------|---------------------------|------------------|-----------------|-----------------|--|------------|--------------------------------|---------------------|-----------|--|
| | | 1962 | 1962 | 1962 | | | | | | |
| | State-Non-Homestead, | 1538 | 939 | 1083 | 64 | | | | | |
| | State-Homestead, | 1316 | 1223 | 1340 | 76 | | | | | |
| | County Revenue, | 7696 | 7052 | 8348 | 442 | | | | | |
| | County Road and Bridge, | 4176 | 3826 | 4530 | 240 | | | | | |
| | County Welfare, | 11764 | 10962 | 12978 | 688 | | | | | |
| | County Bond and Interest, | 228 | 209 | 247 | 13 | | | | | |
| | C. H. Bldg. | 418 | 383 | 454 | 24 | | | | | |
| | Agri. Assn | 104 | 76 | 114 | 06 | | | | | |
| | Ch. Def. | 138 | 126 | 149 | 08 | | | | | |
| | Town Revenue, | 2088 | 1913 | 2265 | 120 | | | | | |
| | Town Road and Bridge, | 1169 | 1072 | 1268 | 67 | | | | | |
| | Town State Loan, | | | | | | | | | |
| | School Local 1 Mill, | 7605 | 4573 | 7054 | 380 | | | | | |
| | School Special, | | | | | | | | | |
| | School State Loan, | | | | | | | | | |
| | Deficiency | 17157 | 15721 | 18611 | 985 | | | | | |
| | Tuition C. O. | 3422 | 3135 | 3712 | 197 | | | | | |
| | Transportation | | | | | | | | | |
| | PERA | 1369 | 1255 | 1486 | 79 | | | | | |
| | Well. Def. | 2274 | 2083 | 2466 | 131 | | | | | |
| | PERA | 1184 | 1085 | 1284 | 68 | | | | | |
| | | 63846 | 55653 | 67389 | 3588 | | | | | |

| MARCH SETTLEMENT | School District No. | LOCAL 1 MILL. | SPECIAL | STATE LOAN | Deficiency | C. O. | PERA | TOTALS |
|------------------|---------------------|---------------|---------|------------|------------|-------|------|--------|
| | | | | | | | | |
| | un a | | 748 | | 3073 | 613 | 245 | 4679 |
| | un 7a | | 6857 | | 14084 | 2809 | 1124 | 24874 |
| | Totals | | 7605 | | 17157 | 3422 | 1369 | 29553 |
| | School District No. | | | | | | | |
| | un a | | 3079 | | 12651 | 2523 | 1010 | 19263 |
| | un 7a | | 1494 | | 3070 | 612 | 245 | 5421 |
| | Totals | | 4573 | | 15721 | 3135 | 1255 | 24684 |
| | School District No. | | | | | | | |
| | un a | | 2006 | | 8241 | 1644 | 658 | 12549 |
| | un 7a | | 5048 | | 10370 | 2068 | 828 | 18314 |
| | Totals | | 7054 | | 18611 | 3712 | 1486 | 30863 |
| | School District No. | | | | | | | |
| | un a | | 100 | | 410 | 82 | 33 | 625 |
| | un 7a | | 280 | | 575 | 115 | 46 | 1016 |
| | Totals | | 380 | | 985 | 197 | 79 | 1641 |
| | School District No. | | | | | | | |
| | Totals | | | | | | | |
| | School District No. | | | | | | | |
| | Totals | | | | | | | |

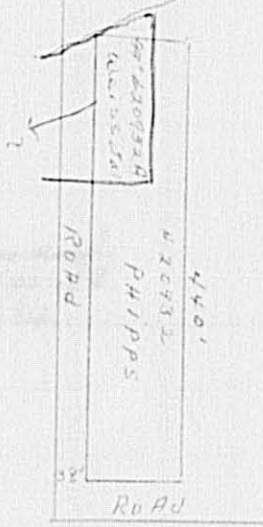
Front of page

Assessment Roll and Tax List of Real Property in the

* Indicate Type of Property: R-Residential, L-Commercial, U-Utility, F-Farm, L-Lakeshore, T-Timber, M-Mineral

Form SCD MILLER-DAVIS CO., MINNEAPOLIS

| IN WHOSE NAME ASSESSED | 1961-1962 | 1960-1961 | 1959-1960 | 1958-1959 | 1957-1958 | 1956-1957 | 1955-1956 | 1954-1955 | 1953-1954 | 1952-1953 | 1951-1952 | ASSESSED VALUATIONS | | | | Total Assessed Value as Equalized by the Board of Review | FINAL EQUALIZED VALUE |
|-------------------------|-----------|-----------|-----------|-----------|-----------|-----------|-----------|-----------|-----------|-----------|-----------|---------------------|---|----------------------------------|----------------------|--|-----------------------|
| | | | | | | | | | | | | ALL OTHER | MACHINERY Permanently Attached to Real Estate | Seasonal and Recreational Cabins | TOTAL ASSESSED VALUE | | |
| John J. Phipps, et al | | | | | | | | | | | | | | | | | |
| W.M. & P. Ry Co. | | | | | | | | | | | | | | | | | |
| U. S. of America | | | | | | | | | | | | | | | | | |
| Myron Jacobson | | | | | | | | | | | | | | | | | |
| State of Minnesota | | | | | | | | | | | | | | | | | |
| State of Minnesota | | | | | | | | | | | | | | | | | |
| State of Minnesota | | | | | | | | | | | | | | | | | |
| Victor + Boris Erickson | | | | | | | | | | | | | | | | | |
| " " " | | | | | | | | | | | | | | | | | |
| " " " | | | | | | | | | | | | | | | | | |
| Lloyd Woodhouse | | | | | | | | | | | | | | | | | |
| John J. Phipps, et al | | | | | | | | | | | | | | | | | |
| U. S. of America | | | | | | | | | | | | | | | | | |
| E. E. Menton | | | | | | | | | | | | | | | | | |
| Ebenzer E. Menton | | | | | | | | | | | | | | | | | |
| E. E. Menton | | | | | | | | | | | | | | | | | |
| Walter E. Holzheimer | | | | | | | | | | | | | | | | | |



Cass County, Minnesota, for Taxes for the Year 1961.

| SOLD FOR TAXES | VALUATIONS BY SCHOOL DISTRICTS AS EQUALIZED BY DEPARTMENT OF TAXATION | | | | | | Tax Including State Homestead | State Tax on Non-Homestead | SPECIAL TAXES | SPECIAL TAXES | TOTAL TAXES | PAID | WHEN PAID | Number of Receipt | March Settlement 1962 | June Settlement 1962 | Penalty | November Settlement 1962 | Penalty | Collections to First Monday in January 1961 | Penalty | Delinquent on First Monday in January 1963 | Total Delinquent Tax and Penalty | REMARKS |
|----------------|---|--------------|--------------|--------------|--------------|--------------|-------------------------------|----------------------------|---------------|---------------|-------------|------|-----------|-------------------|-----------------------|----------------------|---------|--------------------------|---------|---|---------|--|----------------------------------|---------|
| | District No. | District No. | District No. | District No. | District No. | District No. | | | | | | | | | | | | | | | | | | |
| | | | | | | | | | | | | | | | | | | | | | | | | |
| | | | | | | | | 9.12 | | | | | | | | | | | | | | | | |
| 1 | | | | | | | | | | | | | | | | | | | | | | | | |
| 2 | | | | | | | | | | | | | | | | | | | | | | | | |
| 3 | | | | | | | | | | | | | | | | | | | | | | | | |
| 4 | | | | | | | | | | | | | | | | | | | | | | | | |
| 5 | | | | | | | | | | | | | | | | | | | | | | | | |
| 6 | | | | | | | | | | | | | | | | | | | | | | | | |
| 7 | | | | | | | | | | | | | | | | | | | | | | | | |
| 8 | | | | | | | | | | | | | | | | | | | | | | | | |
| 9 | | | | | | | | | | | | | | | | | | | | | | | | |
| 10 | | | | | | | | | | | | | | | | | | | | | | | | |
| 11 | SOLD FOR TAXES | | | | | | | | | | | | | | | | | | | | | | | |
| 12 | SOLD FOR TAXES | | | | | | | | | | | | | | | | | | | | | | | |
| 13 | SOLD FOR TAXES | | | | | | | | | | | | | | | | | | | | | | | |
| 14 | | | | | | | | | | | | | | | | | | | | | | | | |
| 15 | | | | | | | | | | | | | | | | | | | | | | | | |
| 16 | | | | | | | | | | | | | | | | | | | | | | | | |
| 17 | | | | | | | | | | | | | | | | | | | | | | | | |
| 18 | | | | | | | | | | | | | | | | | | | | | | | | |
| 19 | | | | | | | | | | | | | | | | | | | | | | | | |
| 20 | SOLD FOR TAXES | | | | | | | | | | | | | | | | | | | | | | | |

part of a city...

440 50

Cancelled by Abate #892-1

2.18 cover no address

Assessment Roll and Tax List of Real Property in the Town of Salem, Cass County, Minnesota, for Taxes for the Year 1961.

Form 500 - MILLER-DAVIS CO., MINNEAPOLIS

* Indicate Type of Property: R-Residential, C-Commercial, I-Industrial, U-Utility, F-Farm, L-Lakeshore, T-Timber, M-Mineral

Table with columns for IN WHOSE NAME ASSESSED, DESCRIPTION OF PROPERTY, TRUE AND FULL VALUATIONS, ASSESSED VALUATIONS, VALUATIONS BY SCHOOL DISTRICTS AS EQUALIZED BY DEPARTMENT OF TAXATION, TAX INCLUDING STATE HOMESTEAD, SPECIAL TAXES, TOTAL TAXES, PAID, WHEN PAID, and REMARKS. Includes handwritten entries for George + Ella Moser and various tax amounts.

Assessment Roll and Tax List of Real Property in the Town of Salem

* Indicate Type of Property: R-Residential, C-Commercial, I-Industrial, U-Utility, F-Farm, L-Lakeshore, T-Timber, M-Mineral

Form 50-D MILLER-DAVIS CO., MINNEAPOLIS

Table with columns: IN WHOSE NAME ASSESSED, DESCRIPTION OF PROPERTY, TRUE AND FULL VALUATIONS, ASSESSED VALUATIONS, FINAL EQUALIZED VALUE.

Cass County, Minnesota, for Taxes for the Year 1961.

Table with columns: VALUATIONS BY SCHOOL DISTRICTS AS EQUALIZED BY DEPARTMENT OF TAXATION, Tax including State Homestead, State Tax on Non-Homestead, SPECIAL TAXES, TOTAL TAXES, PAID, WHEN PAID, Number of Receipt, March Settlement, June Settlement, Penalty, November Settlement, Penalty, Collections to First Monday in January, Delinquent on First Monday in January, Total Delinquent Tax and Penalty, REMARKS.

Assessment Roll and Tax List of Real Property in the Town of Salem

Form 50-D MILLER-DAVIS CO., MINNEAPOLIS

* Indicate Type of Property: R-Residential, C-Commercial, I-Industrial, U-Utility, F-Farm, L-Lakeshore, T-Timber, M-Mineral

DESCRIPTION OF PROPERTY

TRUE AND FULL VALUATIONS

ASSESSED VALUATIONS

IN WHOSE NAME ASSESSED

SUBDIVISION

Sec. or Lot, Town or Block, Rng., Number of Acres of Land

Acres 100ths

No. School District

Indicate Homestead Yes or No

Agri. or Semi-Rec. Yes or No

Indicate Type of Property

LAND Exclusive of Structures and Improvements

BUILDINGS and Other Structures

MACHINERY Permanently Attached to Real Estate

TOTAL True and Full Value

RURAL Homestead Up to \$4,000 20%

Over \$4,000 and Non-Homestead 33 1/3%

Timber Land Class 3e 20%

Homestead Up to \$1,000 25%

Over \$4,000 and Non-Homestead 40%

MACHINERY Permanently Attached to Real Estate 33 1/3%

Seasonal and Recreational Cabins 33 1/3%

TOTAL ASSESSED VALUE

Total Assessed Value as Equalized by the Board of Review

FINAL EQUALIZED VALUE

Dollars

Dollars

Dollars

Dollars

Dollars

Dollars

Dollars

Dollars

Dollars

Dollars

Dollars

Dollars

Dollars

Dollars

Dollars

Dollars

Dollars

Dollars

Dollars

Dollars

Dollars

Dollars

Dollars

Dollars

Dollars

Dollars

Dollars

Dollars

Dollars

Dollars

Dollars

Dollars

Dollars

Dollars

Dollars

Dollars

Dollars

Cass County, Minnesota, for Taxes for the Year 1961.

SOLD FOR TAXES

VALUATIONS BY SCHOOL DISTRICTS AS EQUALIZED BY DEPARTMENT OF TAXATION

District No., Rate, District No., Rate, District No., Rate, District No., Rate, District No., Rate

Tax including State Homestead

State Tax on Non-Homestead

SPECIAL TAXES

SPECIAL TAXES

TOTAL TAXES

PAID

WHEN PAID

Number of Receipt

March Settlement 1962

June Settlement 1962

Penalty

November Settlement 1962

Penalty

Collections to First Monday in January 1963

Penalty

Delinquent on First Monday in January 1963

Total Delinquent Tax and Penalty

REMARKS

1, 2, 3, 4, 5, 6, 7, 8, 9, 10, 11, 12, 13, 14, 15, 16, 17, 18, 19, 20

NEW of NEW, NW 1/4 of NW 1/4, SW 1/4 of NW 1/4, SE 1/4 of NW 1/4, NW 1/4 of NW 1/4, SW 1/4 of NW 1/4, SE 1/4 of NW 1/4, NW 1/4 of SW 1/4, NW 1/4 of SW 1/4, SW 1/4 of SW 1/4, SE 1/4 of SW 1/4, NW 1/4 of SE 1/4, NW 1/4 of SE 1/4, SW 1/4 of SE 1/4, SE 1/4 of SE 1/4

Total Acres 3,896.15

1, 2, 3, 4, 5, 6, 7, 8, 9, 10, 11, 12, 13, 14, 15, 16, 17, 18, 19, 20

Grand Totals, 4336, 1194, 161, 1555, 5530, 5691, 1234, 1,559.86, 4864, 1,628.50, 1,628.50