

Assessment & Tax List - 1961

Rogers







Assessment of T

COLLECTIONS OF TAXES OF 1961, *Town of Rogers*, CASS COUNTY, MINNESOTA

Form 314 WELLS-DAY COMPANY, MINNEAPOLIS

1

2

3

4

5

6

7

8

NAME OF OWNER

FUNDS	MARCH SETTLEMENT 19.62	JUNE SETTLEMENT 19.62	NOV. SETTLEMENT 19.62	Amount Collected from Nov. 19.62 to First Monday in Jan. 1963	REDUCTIONS	Total Reductions and Collected	BALANCE UNCOLLECTED	ADDITIONS	Total Uncollected to First Monday in January, 1963
State-Non-Homestead,	1463	6818	2989	256					
State-Homestead,	1308	6635	3030	276					
County Revenue,	9121	38427	17747	1555					
County Road and Bridge,	4949	20850	9629	844					
County Welfare,	14179	59737	27588	2418					
County Bond and Interest,	270	1136	525	46					
C.N. Aldy.	495	2085	963	84					
Agri. Assn.	124	521	240	21					
Civ. Def.	163	688	318	28					
Town Revenue,	2475	10425	4815	422					
Town Road and Bridge,	6186	26064	12037	1055					
Town State Loan,									
Fire	2475	10424	4815	422					
Em. Rd.	1237	5213	2406	211					
School Local 1 Mill,									
School Special,	9195	29168	14093	1598					
School State Loan,									
Deficiency	20333	85664	39562	3467					
Tuition C.O.	4056	17088	7891	692					
Transportation									
PERA	1624	6839	3158	277					
Welf. Def.	2695	11353	5243	459					
PERA	1403	5911	2730	239					
	83751	345046	159779	14364					

	LOCAL 1 MILL	SPECIAL	STATE LOAN	Deficiency	C.O.	PERA	TOTALS
MARCH SETTLEMENT		703 8492		2889 17444	576 3480	231 1393	4399 30809
Totals		9195		20333	4056	1624	35208
JUNE SETTLEMENT		12534 16634		51494 34170	10272 6816	4111 2728	78411 60348
Totals		29168		85664	17088	6839	138759
NOVEMBER SETTLEMENT		5165 8928		21223 18339	4233 3658	1694 1464	32315 32389
Totals		14093		39562	7891	3158	64704
NOVEMBER to JANUARY		90 1508		370 3097	74 618	30 247	564 5470
Totals		1598		3467	692	277	6034
ADDITIONS							
Totals							
REDUCTIONS							
Totals							

Road Report

Part of Rogers Beach

Boy Bay











Assessment Roll and Tax List of Real Property in the

Town of Rogers  
\* Indicate Type of Property: R-Residential, C-Commercial, I-Industrial, U-Utility, F-Farm, L-Lakeshore, T-Timber, M-Mineral

Cass County, Minnesota, for Taxes for the Year 1961.

Table with columns: IN WHOSE NAME ASSESSED, DESCRIPTION OF PROPERTY (Subdivision, Acres, 100ths), TRUE AND FULL VALUATIONS (LAND, BUILDINGS, MACHINERY, TOTAL), ASSESSED VALUATIONS (RURAL, ALL OTHER, MACHINERY, Seasonal and Recreational Cabins, TOTAL ASSESSED VALUE, Total Assessed Value as Equalized by the Board of Review), FINAL EQUALIZED VALUE, SOLD FOR TAXES, VALUATIONS BY SCHOOL DISTRICTS AS EQUALIZED BY DEPARTMENT OF TAXATION, Tax Including State Homestead, State Tax on Non-Homestead, SPECIAL TAXES, TOTAL TAXES, PAID, WHEN PAID, Number of Receipt, March Settlement 1962, June Settlement 1962, Penalty, November Settlement 1962, Penalty, Collections to First Monday in January 1963, Penalty, Delinquent on First Monday in January 1963, Total Delinquent Tax and Penalty, REMARKS.















Assessment Roll and Tax List of Real Property in the Town of Rogers, Cass County, Minnesota. \* Indicate Type of Property: R-Residential, C-Commercial, I-Industrial, U-Utility, F-Farm, L-Lakeshore, T-Timber, M-Mineral

Cass County, Minnesota, for Taxes for the Year 1961.

Table with columns for Property Description, Valuations, and Taxes. Includes sub-sections for True and Full Valuations, Assessed Valuations, and Equalized Valuations. Rows list property parcels with details on owner, location, and valuation.

Assessment Roll and Tax List of Real Property in the Town of Rogers,  
 \* Indicate Type of Property: R-Residential, C-Commercial, I-Industrial, U-Utility, F-Farm, L-Lakeshore, T-Timber, M-Mineral

Form 503, MILLER-DAVIS CO., MINNEAPOLIS

IN WHOSE NAME ASSESSED	DESCRIPTION OF PROPERTY			No. School District	Indicate Homestead Yes or No	Agri. or Semi-Agri. Yes or No	Indicate Type of Property	TRUE AND FULL VALUATIONS							ASSESSED VALUATIONS							Total Assessed Value as Equalized by the Board of Review	FINAL EQUALIZED VALUE				
	SUBDIVISION	Sec. or Lot	Town or Block					No. of Acres	LAND Exclusive of Structures and Improvements	BUILDINGS and Other Structures	MACHINERY Permanently Attached to Real Estate	TOTAL True and Full Value	RURAL		ALL OTHER		MACHINERY Permanently Attached to Real Estate	Seasonal and Recreational Cabins	TOTAL ASSESSED VALUE								
													Homestead Up to \$4,000	Over \$4,000 and Non-Homestead	Homestead Up to \$4,000	Over \$4,000 and Non-Homestead											
<i>Aloys + Hilda M. Harnert</i> U. S. of America	1	NEW	13 142 27	40	WA	YES	YES	F																			
	2	NW																									
	3	SW	LESS 3 ACS.		37	YES	YES	C																			
	4	SE			40	YES	"	F																			
	5	1 AC. OF SW	NE																								
<i>Lodge Catholic Parish</i> U. S. of America U. S. of America U. S. of America U. S. of America	6	NE																									
	7	NW	LESS R/W																								
	8	SW	" "																								
	9	SE	" "																								
	10	1 AC. OF SW	NE		1	NO	YES	T																			
<i>Herman P. Loring</i> U. S. of America U. S. of America State of Minnesota State of Minnesota	11	NE	LESS R/W																								
	12	NW																									
	13	SW																									
	14	SE																									
	15	ALL OF SE	LYING NE OF R/W																								
<i>Edgar Cole, Wallace Lodge, Roberts Smith</i> U. S. of America State of Minnesota	16	ALL 5/8 OF SE	LYING SW OF R/W																								
	17	NW																									
	18	S. 209' OF W. 209' OF E. 275' OF SW	NE		1	NO	YES	R																			
	19	SE																									
	20	THAT PART OF NW	OF SE		17	YES	"	"																			
				136																							

Cass County, Minnesota, for Taxes for the Year 1961.

SOLD FOR TAXES	VALUATIONS BY SCHOOL DISTRICTS AS EQUALIZED BY DEPARTMENT OF TAXATION						Tax Including State Homestead	State Tax on Non-Homestead	SPECIAL TAXES	SPECIAL TAXES	TOTAL TAXES	PAID	WHEN PAID	Number of Receipt	March Settlement 1962	June Settlement 1962	Penalty	November Settlement 1962	Penalty	Collections to First Monday in January 1963	Penalty	Delinquent on First Monday in January 1963	Total Delinquent Tax and Penalty	REMARKS	
	District No.	District No.	District No.	District No.	District No.	District No.																			
	Rate	Rate	Rate	Rate	Rate	Rate																			
1	H 23						728			728	1	2nd Half Paid OCT 3 1 1962 1st HALF PAID MAY 3 1 1962	20779 16807		364		364					32121	10640		
2																									
3	H 202						6392			6392	3	2nd Half Paid OCT 3 1 1962 1st HALF PAID MAY 3 1 1962	20779 16807		3196		3196					32121	10640		
4	H 23						728			728	4	2nd Half Paid OCT 3 1 1962 1st HALF PAID MAY 3 1 1962	20779 16807		364		364					32121	"		
5																									
6																									
7																									
8																									
9																									
10	SOLD FOR TAXES						316	10		326	10														
11																									
12																									
13																									
14																									
15																									
16																									
17																									
18							950	28		978	18	PAID IN FULL MAY 1 1962	8124		978										
19																									
20							3386			3386	20	2nd HALF PAID OCT 2 2 1962 1st HALF PAID MAR 27 1962	14323 7701		1093		1693						22122	10642	
							12500	38		12538					6595		5617						326		

Part of...

Part of...

Part of...



Assessment Roll and Tax List of Real Property in the Town of Rogers

Cass County, Minnesota, for Taxes for the Year 1961.

Form SCD, MILLER-DAVIS CO., MINNEAPOLIS \* Indicate Type of Property: R-Residential, C-Commercial, I-Industrial, U-Utility, F-Farm, L-Lakeshore, T-Timber, M-Mineral

Table with columns: IN WHOSE NAME ASSESSED, DESCRIPTION OF PROPERTY, TRUE AND FULL VALUATIONS, ASSESSED VALUATIONS, VALUATIONS BY SCHOOL DISTRICTS AS EQUALIZED BY DEPARTMENT OF TAXATION, TAXES, PAID, WHEN PAID, Number of Receipt, March Settlement 1962, June Settlement 1962, November Settlement 1962, Penalty, Collections to First Monday in January 1963, Delinquent on First Monday in January 1963, Total Delinquent Tax and Penalty, REMARKS.

U. S. of America  
U. S. of America  
U. S. of America  
U. S. of America  
U. S. of America  
U. S. of America  
U. S. of America  
U. S. of America  
State of Minnesota  
U. S. of America  
Wm. Stelling  
H. G. + Lavina Rogers  
William Stelling  
U. S. of America  
State of Minnesota  
State of Minnesota  
U. S. of America  
Earl + Michel S. Gispin

Part of  
Rogers Beach  
Boy Bay

10643  
10577  
10643

PAID IN FULL FEB 21 1962  
2nd HALF PAID JUL 2 1962  
PAID IN FULL FEB 21 1962

3482  
3904  
254  
3482  
3904  
254  
3736  
3482  
254  
7746

H 110  
116  
H 8  
H 118  
116 = 116  
234

3685  
3745  
7630

GOV'T LOT 2  
GOV'T LOT 1 LESS NW 1/4 198'  
NW 1/4 198' OF GOV'T LOT 1  
Part of Gov't Lot 1  
less NW 1/4 198'

15 142 27  
Acres 100ths

Yes Yes R  
NO NO L  
Yes Yes R

3685  
3745  
7630

Yes Yes R  
NO NO L  
Yes Yes R

3685  
3745  
7630

Yes Yes R  
NO NO L  
Yes Yes R

3685  
3745  
7630

Yes Yes R  
NO NO L  
Yes Yes R

3685  
3745  
7630

Yes Yes R  
NO NO L  
Yes Yes R

3685  
3745  
7630

Yes Yes R  
NO NO L  
Yes Yes R

3685  
3745  
7630

Yes Yes R  
NO NO L  
Yes Yes R

3685  
3745  
7630

Assessment Roll and Tax List of Real Property in the Town of Rogers

Cass County, Minnesota, for Taxes for the Year 1961.

Form SCD MILLER-DAVIS CO., MINNEAPOLIS

\* Indicate Type of Property: R-Residential, C-Commercial, I-Industrial, U-Utility, F-Farm, L-Lakeshore, T-Timber, M-Mineral

IN WHOSE NAME ASSESSED	DESCRIPTION OF PROPERTY				No. School District	Indicate Homestead Yes or No	Agricultural Yes or No	Indicate Type of Property	TRUE AND FULL VALUATIONS				ASSESSED VALUATIONS								SOLD FOR TAXES	VALUATIONS BY SCHOOL DISTRICTS AS EQUALIZED BY DEPARTMENT OF TAXATION						PAID	WHEN PAID	Number of Receipt	March Settlement 1962	June Settlement 1962	Penalty	November Settlement 1962	Penalty	Collections to First Monday in January 1963	Penalty	Delinquent on First Monday in January 1963	Total Delinquent Tax and Penalty	REMARKS	
	SUBDIVISION	Sec. or Lot	Town or Block	Rng.					Number of Acres of Land	LAND Exclusive of Structures and Improvements	BUILDINGS and Other Structures	MACHINERY Permanently Attached to Real Estate	TOTAL True and Full Value	RURAL	ALL OTHER	MACHINERY Permanently Attached to Real Estate	Seasonal and Recreational Cabins	TOTAL ASSESSED VALUE	Total Assessed Value as Equalized by the Board of Review	District No.		District No.	District No.	District No.	District No.	District No.	Tax including State Homestead														State Tax on Non-Homestead
					Acres 100ths				Dollars	Dollars	Dollars	Dollars	Dollars	Dollars	Dollars	Dollars	Dollars	Dollars	Dollars	Dollars	Dollars	\$ cts.	\$ cts.	\$ cts.	\$ cts.	\$ cts.	\$ cts.	\$ cts.	\$ cts.	\$ cts.	\$ cts.	\$ cts.	\$ cts.	\$ cts.	\$ cts.	\$ cts.	\$ cts.				
	NEW of NEW	16			142.27	UN																																			
	NW of NEW																																								
	SW of NEW																																								
	SE of NEW																																								
	NEW of NW																																								
	GOVT LOT 2				36.75	NO	YES	T													62		1962	56		2018				7	PAID IN FULL	JUL 13 1962	16326		2018	40		25.85			
	SW of NW																																								
	SE of NW																																								
	NEW of SW																																								
	NW of SW																																								
	SW of SW																																								
	SE of SW																																								
	NEW of SE																																								
	NW of SE																																								
	SW of SE																																								
	SE of SE																																								
					36.75																62		1962	56		2018										2018					

*Handwritten notes:* Hansel D. Prochert, Stanley P. Humpf, Edward G. +unkild, E. Larsen

Plat of ...

Assessment Roll and Tax List of Real Property in the

Town of Rogers, Minnesota  
\* Indicate Type of Property: R-Residential, C-Commercial, I-Industrial, U-Utility, F-Farm, L-Lakeshore, T-Timber, M-Mineral

Form 5CD MILLER-DAVIS CO., MINNEAPOLIS

Table with columns: IN WHOSE NAME ASSESSED, DESCRIPTION OF PROPERTY, TRUE AND FULL VALUATIONS, ASSESSED VALUATIONS, and FINAL EQUALIZED VALUE. Includes entries for Edward J. & Lunkittel E. Larson, Olaf Anderson, and Robert L. & Mary Joan Pichn.

Cass County, Minnesota, for Taxes for the Year 1961.

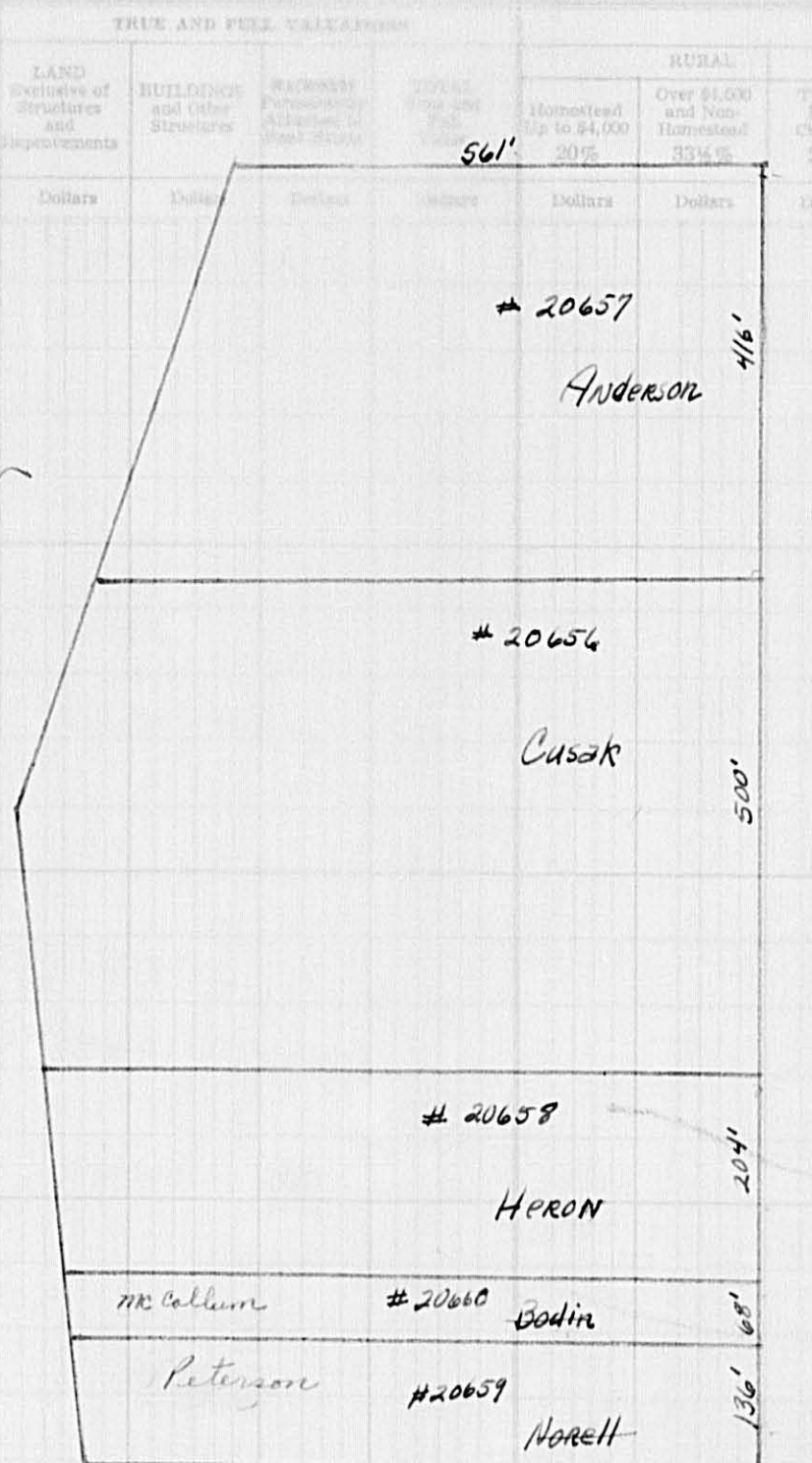
Table with columns: VALUATIONS BY SCHOOL DISTRICTS AS EQUALIZED BY DEPARTMENT OF TAXATION, TAXES, PAID, WHEN PAID, and REMARKS. Includes handwritten notes like 'PAID IN FULL' and 'SOLD FOR TAXES'.

Plat of Rogers Beach

Assessment Roll and Tax List of Real Property in the ... LOT 5 Sec. 18-42-27

Form 5 CD MILLER-DAVIS CO., MINNEAPOLIS

Table with columns: IN WHOSE NAME ASSESSED, DESCRIPTION OF PROPERTY (Subdivision, Sec of Lot, Town or Block, Rng., Number of Acres of Land), ASSESSED VALUATIONS (ALL OTHER, MACHINERY, Seasonal and Recreational Cabins, TOTAL ASSESSED VALUE, Total Assessed Value as Equalized by the Board of Review, FINAL EQUALIZED VALUE), TRUE AND FULL VALUATIONS (LAND, BUILDINGS, etc.), and REMARKS.



Cass County, Minnesota, for Taxes for the Year 1961.

Table with columns: SOLD FOR TAXES, VALUATIONS BY SCHOOL DISTRICTS AS EQUALIZED BY DEPARTMENT OF TAXATION, Tax Including State Homestead, State Tax on Non-Homestead, SPECIAL TAXES, SPECIAL TAXES, TOTAL TAXES, PAID, WHEN PAID, Number of Receipt, March Settlement 1962, June Settlement 1962, Penalty, November Settlement 1962, Penalty, Collections to First Monday in January 1963, Penalty, Delinquent on First Monday in January 1963, Total Delinquent Tax and Penalty, REMARKS.

Part of Cass County, Minnesota, for Taxes for the Year 1961.





Assessment Roll and Tax List of Real Property in the

of Rogers

\* Indicate Type of Property: R-Residential, C-Commercial, I-Industrial, U-Utility, F-Farm, L-Lakeshore, T-Timber, M-Mineral

Form 5CD MILLER-DAVIS CO., MINNEAPOLIS

Table with columns: IN WHOSE NAME ASSESSED, SUBDIVISION, Sec. of Lot, Town of Block, Reg., Number of Acres of Land, No. School District, Indicate Homestead, Agri. or Leas. Here, Indicate Type of Property, TRUE AND FULL VALUATIONS (LAND, BUILDINGS, MACHINERY, TOTAL), ASSESSED VALUATIONS (RURAL, ALL OTHER, MACHINERY, Seasonal and Recreational Cabins, TOTAL ASSESSED VALUE, Total Assessed Value as Equalized by the Board of Review), FINAL EQUALIZED VALUE.

Norothy Mullett

Paul R. + Ripola E. Smith

Harvey Carmen Christyman

(CONT NEXT PAGE)

Cass County, Minnesota, for Taxes for the Year 1961.

Table with columns: SOLD FOR TAXES, VALUATIONS BY SCHOOL DISTRICTS AS EQUALIZED BY DEPARTMENT OF TAXATION (District No., Rate, etc.), Tax Including State Homestead, State Tax on Non-Homestead, SPECIAL TAXES, TOTAL TAXES, PAID, WHEN PAID, Number of Receipt, March Settlement, June Settlement, Penalty, November Settlement, Collections to First Monday in January 1963, Delinquent on First Monday in January 1963, Total Delinquent Tax and Penalty, REMARKS.

Part of Paul Park Rogers Beach

22116, 10590









Assessment Roll and Tax List of Real Property in the Town of Rogers of Rogers \* Indicate Type of Property: R-Residential, C-Commercial, I-Industrial, U-Utility, F-Farm, L-Lakeshore, T-Timber, M-Mineral

Form 500 - MILLER-DAVIS CO., MINNEAPOLIS

Table with columns: IN WHOSE NAME ASSESSED, DESCRIPTION OF PROPERTY, TRUE AND FULL VALUATIONS, ASSESSED VALUATIONS, and FINAL EQUALIZED VALUE. Includes entries for State of Minnesota, U.S. of America, and various individuals like John A. Dicka and Albert + Elsie M. Smoogras.

Cass County, Minnesota, for Taxes for the Year 1961.

Table with columns: VALUATIONS BY SCHOOL DISTRICTS AS EQUALIZED BY DEPARTMENT OF TAXATION, Tax Including State Homestead, State Tax on Non-Homestead, SPECIAL TAXES, TOTAL TAXES, PAID, WHEN PAID, Number of Receipt, March Settlement 1962, June Settlement 1962, November Settlement 1962, Collections to First Monday in January 1963, Delinquent on First Monday in January 1963, Total Delinquent Tax and Penalty, and REMARKS. Includes handwritten notes like '2nd HALF PAID OCT 9 1962' and 'PAID IN FULL MAY 3 1962'.

Assessment Roll and Tax List of Real Property in the South of Rogers  
\* Indicate Type of Property: R-Residential, C-Commercial, I-Industrial, U-Utility, F-Farm, L-Lakeshore, T-Timber, M-Mineral

Form 504 - MILLER-DAVIS CO., MINNEAPOLIS

Table with columns: IN WHOSE NAME ASSESSED, DESCRIPTION OF PROPERTY (Subdivision, Acres, 100ths), TRUE AND FULL VALUATIONS (Land, Buildings, Machinery, Total), ASSESSED VALUATIONS (Rural, All Other, Homestead, etc.), FINAL EQUALIZED VALUE.

Cass County, Minnesota, for Taxes for the Year 1961.

Table with columns: SOLD FOR TAXES (District, Rate, Mills), Tax Including State, State Tax on Non-Homestead, SPECIAL TAXES, TOTAL TAXES, PAID, WHEN PAID (Month, Day, Year), Number of Receipt, Settlement amounts (March, June, November, etc.), Delinquent on First Monday in January, Total Delinquent Tax and Penalty, REMARKS.





# Assessment Roll and Tax List of Real Property in the *Town of Rogers*

Form 50D - MILLER-DAVIS CO., MINNEAPOLIS

\* Indicate Type of Property: R-Residential, C-Commercial, I-Industrial, U-Utility, F-Farm, L-Lakeshore, T-Timber, M-Mineral

### DESCRIPTION OF PROPERTY

### TRUE AND FULL VALUATIONS

IN WHOSE NAME ASSESSED	DESCRIPTION OF PROPERTY				No. School District	Indicate Homestead Yes or No	Agricultural Yes or No	* Indicate Type of Property	TRUE AND FULL VALUATIONS													Final Equalized Value						
	Subdivision	Sec. or Lot	Town or Block	Rng.					Number of Acres of Land		LAND Exclusive of Structures and Improvements	BUILDINGS and Other Structures	MACHINERY Permanently Attached to Real Estate	TOTAL True and Full Value	RURAL					ALL OTHER			TOTAL ASSESSED VALUE	Total Assessed Value as Equalized by the Board of Review				
									Acres	100ths					Homestead Up to \$4,000	Over \$4,000 and Non-Homestead	Timber Land Class 3e	Homestead Up to \$4,000	Over \$4,000 and Non-Homestead	MACHINERY Permanently Attached to Real Estate	Seasonal and Recreational Cabins							
U. S. of America																												
State of Minnesota																												
State of Minnesota																												
U. S. of America																												
State of Minnesota																												
State of Minnesota																												
State of Minnesota																												
State of Minnesota																												
U. S. of America																												
U. S. of America																												
U. S. of America																												
U. S. of America																												
U. S. of America																												
U. S. of America																												
U. S. of America																												

24 142 27

UN

## Cass County, Minnesota, for Taxes for the Year 1961.

SOLD FOR TAXES	VALUATIONS BY SCHOOL DISTRICTS AS EQUALIZED BY DEPARTMENT OF TAXATION						Tax including State Homestead	State Tax on Non-Homestead	SPECIAL TAXES	SPECIAL TAXES	TOTAL TAXES	PAID	WHEN PAID	Number of Receipt	March Settlement 1962	June Settlement 1962	Penalty	November Settlement 1962	Penalty	Collections to First Monday in January 1963	Penalty	Delinquent on First Monday in January 1963	Total Delinquent Tax and Penalty	REMARKS				
	District No.	District No.	District No.	District No.	District No.	District No.																						
	Rate	Rate	Rate	Rate	Rate	Rate																						
	Mills	Mills	Mills	Mills	Mills	Mills																						
1																												
2																												
3																												
4																												
5																												
6																												
7																												
8																												
9																												
10																												
11																												
12																												
13																												
14																												
15																												
16																												
17																												
18																												
19																												
20																												

Part of *Robert Head*

Assessment Roll and Tax List of Real Property in the Town of Rogers,

\* Indicate Type of Property: R-Residential, C-Commercial, I-Industrial, U-Utility, F-Farm, L-Lakeshore, T-Timber, M-Mineral

Form SCD - MILLER-DAVIS CO., MINNEAPOLIS

IN WHOSE NAME ASSESSED	DESCRIPTION OF PROPERTY				No. School District	Indicate Homestead Yes or No	Agricultural Use Yes or No	* Indicate Type of Property	TRUE AND FULL VALUATIONS				ASSESSED VALUATIONS					Total Assessed Value as Equalized by the Board of Review	FINAL EQUALIZED VALUE				
	SUBDIVISION	Sec. or Lot	Town or Block	Rng.					Number of Acres of Land	LAND Exclusive of Structures and Improvements	BUILDINGS and Other Structures	MACHINERY Permanently Attached to Real Estate	TOTAL True and Full Value	RURAL			ALL OTHER			MACHINERY Permanently Attached to Real Estate	Seasonal and Recreational Cabins	TOTAL ASSESSED VALUE	
														Homestead Up to \$4,000 20%	Over \$4,000 and Non-Homestead 33 1/2%	Timber Land Class 3e 20%	Homestead Up to \$4,000 25%						Over \$4,000 and Non-Homestead 40%
U. S. of America					25/42 27																		
U. S. of America																							
U. S. of America																							
U. S. of America																							
U. S. of America																							
U. S. of America																							
U. S. of America																							
U. S. of America																							
U. S. of America																							
U. S. of America																							
U. S. of America																							
State of Minnesota																							
U. S. of America																							
U. S. of America																							
U. S. of America																							
U. S. of America																							
U. S. of America																							
U. S. of America																							

Cass County, Minnesota, for Taxes for the Year 1961.

SOLD FOR TAXES	VALUATIONS BY SCHOOL DISTRICTS AS EQUALIZED BY DEPARTMENT OF TAXATION						Tax Including State Homestead	State Tax on Non-Homestead	SPECIAL TAXES	SPECIAL TAXES	TOTAL TAXES	PAID	WHEN PAID	Number of Receipt	March Settlement 1962	June Settlement 1962	Penalty	November Settlement 1962	Penalty	Collections to First Monday in January 1963	Penalty	Delinquent on First Monday in January 1963	Total Delinquent Tax and Penalty	REMARKS		
	District No.	District No.	District No.	District No.	District No.	District No.																				
	Rate	Rate	Rate	Rate	Rate	Rate																				
	Mills	Mills	Mills	Mills	Mills	Mills																				
1																										
2																										
3																										
4																										
5																										
6																										
7																										
8																										
9																										
10																										
11																										
12																										
13																										
14																										
15																										
16																										
17																										
18																										
19																										
20																										

Part of Park Rogers Beach

Assessment Roll and Tax List of Real Property in the Town of Rogers

Cass County, Minnesota, for Taxes for the Year 1961.

Form 56D - MILLER-DAVIS CO., MINNEAPOLIS

\* Indicate Type of Property: R-Residential, C-Commercial, I-Industrial, U-Utility, F-Farm, L-Lakeshore, T-Timber, M-Mineral

IN WHOSE NAME ASSESSED	DESCRIPTION OF PROPERTY				No. School District	Indicate Homestead Yes or No	Agricultural or Sens. Property Yes or No	Indicate Type of Property	TRUE AND FULL VALUATIONS				ASSESSED VALUATIONS						FINAL EQUALIZED VALUE	SOLD FOR TAXES	VALUATIONS BY SCHOOL DISTRICTS AS EQUALIZED BY DEPARTMENT OF TAXATION						Tax Including State Homestead	State Tax on Non-Homestead	SPECIAL TAXES	SPECIAL TAXES	TOTAL TAXES	PAID	WHEN PAID	Number of Receipt	March Settlement 1962	June Settlement 1962	Penalty	November Settlement 1962	Penalty	Collections to First Monday in January 1963	Penalty	Delinquent on First Monday in January 1963	Total Delinquent Tax and Penalty	REMARKS			
	SUBDIVISION	Sec. of Lot	Town or Block	Rng.					Number of Acres of Land	LAND Exclusive of Structures and Improvements	BUILDINGS and Other Structures	MACHINERY Permanently Attached to Real Estate	TOTAL True and Full Value	RURAL		ALL OTHER		MACHINERY Permanently Attached to Real Estate			Seasonal and Recreational Cabins	TOTAL ASSESSED VALUE	Total Assessed Value as Equalized by the Board of Review	District No.	District No.	District No.																			District No.	District No.	District No.
														Homestead Up to \$4,000 20%	Over \$4,000 and Non-Homestead 33 1/3%	Timber Land Class 3e 20%	Homestead Up to \$4,000 25%																														
U. S. of America	1	NEW of NEW	26	142	29																																										
U. S. of America	2	NW 1/4 of NEW																																													
U. S. of America	3	SW 1/4 of NEW																																													
U. S. of America	4	SE 1/4 of NEW																																													
	5																																														
U. S. of America	6	NE 1/4 of NW 1/4																																													
U. S. of America	7	NW 1/4 of NW 1/4																																													
U. S. of America	8	SW 1/4 of NW 1/4																																													
U. S. of America	9	SE 1/4 of NW 1/4																																													
	10																																														
U. S. of America	11	NE 1/4 of SW 1/4																																													
U. S. of America	12	NW 1/4 of SW 1/4																																													
U. S. of America	13	<del>SW 1/4 of SW 1/4</del> GOVT LOT 1																																													
State of Minnesota	14	SE 1/4 of SW 1/4																																													
	15																																														
U. S. of America	16	NE 1/4 of SE 1/4																																													
U. S. of America	17	NW 1/4 of SE 1/4																																													
U. S. of America	18	SW 1/4 of SE 1/4																																													
U. S. of America	19	SE 1/4 of SE 1/4																																													
	20																																														

Benjamin Specker

12 2 11

Part of Report Beach

Assessment Roll and Tax List of Real Property in the Town of Rogers

\* Indicate Type of Property: R-Residential, C-Commercial, I-Industrial, U-Utility, F-Farm, L-Lakeshore, T-Timber, M-Mineral

Form SCD - MILLER-DAVIS CO., MINNEAPOLIS

Table with columns: IN WHOSE NAME ASSESSED, DESCRIPTION OF PROPERTY, TRUE AND FULL VALUATIONS, ASSESSED VALUATIONS, and FINAL EQUALIZED VALUE. Includes entries for Dr. H. Bush, C. G. Stoll, Alden Black, U. S. of America, Vernon A. & Neva Risk, Charles H. & Harriet C. Brown, Harry H. & Alfaretta Hoff, and Julius M. & Mildred A. Hoff.

Cass County, Minnesota, for Taxes for the Year 1961.

Table with columns: VALUATIONS BY SCHOOL DISTRICTS AS EQUALIZED BY DEPARTMENT OF TAXATION, Tax including State Homestead, State Tax on Non-Homestead, SPECIAL TAXES, TOTAL TAXES, PAID, WHEN PAID, Number of Receipt, March Settlement, June Settlement, November Settlement, Collections to First Monday in January 1963, Delinquent on First Monday in January 1963, Total Delinquent Tax and Penalty, and REMARKS. Includes entries for 1-20 and a 'SOLD FOR TAXES' entry.

Assessment Roll and Tax List of Real Property in the Town of Rogers, \* Indicate Type of Property: R-Residential, C-Commercial, I-Industrial, U-Utility, F-Farm, L-Lakeshore, T-Timber, M-Mineral

Form 500 - MILLER-DAVIS CO., MINNEAPOLIS

IN WHOSE NAME ASSESSED	DESCRIPTION OF PROPERTY				No. School District	Indicate Homestead Yes or No	Agricult. or Seasonal Yes or No	Indicate Type of Property	TRUE AND FULL VALUATIONS				ASSESSED VALUATIONS							FINAL EQUALIZED VALUE			
	SUBDIVISION	Sec. or Lot	Town or Block	Rng.					Number of Acres of Land	LAND Exclusive of Structures and Improvements	BUILDINGS and Other Structures	MACHINERY Permanently Attached to Real Estate	TOTAL True and Full Value	RURAL			ALL OTHER		MACHINERY Permanently Attached to Real Estate		Seasonal and Recreational Cabins	TOTAL ASSESSED VALUE	Total Assessed Value as Equalized by the Board of Review
														Acres 100ths	Homestead Up to \$4,000 20%	Over \$4,000 and Non-Homestead 33 1/3%	Timber Land Class 3e 20%	Homestead Up to \$4,000 25%					
State of Minnesota	NEW of NE 1/4				Govt Lot 1 28 142 21																		
State of Minnesota	NEW of NE 1/4				LOT 8																		
Charles H. & Harriet C. Brown	SW 1/4 of NE 1/4				LOT 2																		
"	SE 1/4 of NE 1/4				LESS TO U.S.																		
Indian Land	NEW of NW 1/4																						
State of Minnesota	NW 1/4 of NW 1/4																						
State of Minnesota	SW 1/4 of NW 1/4				Govt Lot 7 LESS W. 20 ACS.																		
Charles Joseph & Neely Virginia Lewis	SW 1/4 of NW 1/4				W. 20 ACS. OF GOVT LOT 7																		
U. S. of America	NEW of SW 1/4																						
Indian Land	NW 1/4 of SW 1/4				GOVT LOT 8																		
	SW 1/4 of SW 1/4																						
	SE 1/4 of SW 1/4																						
State of Minnesota					1/2 OF GOVT LOT 3																		
U. S. of America	NE 1/4 of SE 1/4				1/2 OF GOVT LOT 3																		
Frank MacBain	NW 1/4 of SE 1/4				GOVT LOT 6																		
Arnold & Marquet J. Brum	SW 1/4 of SE 1/4				GOVT LOT 5																		
U. S. of America	SE 1/4 of SE 1/4				GOVT LOT 4																		

Cass County, Minnesota, for Taxes for the Year 1961.

SOLD FOR TAXES	VALUATIONS BY SCHOOL DISTRICTS AS EQUALIZED BY DEPARTMENT OF TAXATION						Tax including State Homestead	State Tax on Non-Homestead	SPECIAL TAXES	SPECIAL TAXES	TOTAL TAXES	PAID	WHEN PAID	Number of Receipt	March Settlement 1962	June Settlement 1962	Penalty	November Settlement 1962	Penalty	Collections to First Monday in January 1963	Penalty	Delinquent on First Monday in January 1963	Total Delinquent Tax and Penalty	REMARKS
	District No.	District No.	District No.	District No.	District No.	District No.																		
	Rate	Rate	Rate	Rate	Rate	Rate																		
1																								
2																								
3																								
4																								
5																								
6																								
7																								
8																								
9																								
10																								
11																								
12																								
13																								
14																								
15																								
16																								
17																								
18																								
19																								
20																								

Part of Fair Park Rogers Beach

Part of Fair Park Rogers Beach

Assessment Roll and Tax List of Real Property in the Town of Rogers of Minnesota,  
\* Indicate Type of Property: R-Residential, C-Commercial, I-Industrial, U-Utility, F-Farm, L-Lakeshore, T-Timber, M-Mineral

Table with columns for 'IN WHOSE NAME ASSESSED', 'DESCRIPTION OF PROPERTY', 'TRUE AND FULL VALUATIONS', and 'ASSESSED VALUATIONS'. Includes entries for Thomas J. Chalupsky, J. N. + Helen H. Wood, Ruth Riedler, Richard Erickson, Burnett C. + Marguerite Jorvaag, Jay N. + Helen H. Wood, and Henry D. + Theodore D. Johnson.

Cass County, Minnesota, for Taxes for the Year 1961.

Table with columns for 'VALUATIONS BY SCHOOL DISTRICTS AS EQUALIZED BY DEPARTMENT OF TAXATION', 'PAID', 'WHEN PAID', 'March Settlement 1962', 'June Settlement 1962', 'November Settlement 1962', and 'REMARKS'. Includes tax details and payment dates for various property lots.

(CONT NEXT PAGE)

PL 5. R. #35230  
6/4/63

Plat of  
Farm Part  
Rogers, Beeson  
207 Bay

Assessment Roll and Tax List of Real Property in the Town of Rogers  
 \* Indicate Type of Property: R-Residential, C-Commercial, I-Industrial, U-Utility, F-Farm, L-Lakeshore, T-Timber, M-Mineral

Form SCD - MILLER-DAVIS CO., MINNEAPOLIS

IN WHOSE NAME ASSESSED	DESCRIPTION OF PROPERTY				No. School District	Indicate Homestead Yes or No	Agri. or Seas. Rec. Yes or No	Indicate Type of Property	TRUE AND FULL VALUATIONS				ASSESSED VALUATIONS					FINAL EQUALIZED VALUE Dollars		
	SUBDIVISION	Sec. of Lot	Town or Block	Rng. Acres of Land					LAND Exclusive of Structures and Improvements	BUILDINGS and Other Structures	MACHINERY Permanently Attached to Real Estate	TOTAL True and Full Value	RURAL		ALL OTHER				TOTAL ASSESSED VALUE	Total Assessed Value as Equalized by the Board of Review
													Up to \$4,000 20%	Over \$4,000 and Non-Homestead 33 1/2%	Timber Land Class 3e 20%	Homestead Up to \$4,000 25%	Over \$4,000 and Non-Homestead 40%			
				Acres 100ths				Dollars	Dollars	Dollars	Dollars	Dollars	Dollars	Dollars	Dollars	Dollars	Dollars			
	NEW of NEW			2914227																
	NW 1/4 of NEW																			
	SW 1/4 of NEW																			
	SE 1/4 of NEW																			
	NE 1/4 of NW 1/4																			
	NW 1/4 of NW 1/4																			
	SW 1/4 of NW 1/4																			
	SE 1/4 of NW 1/4																			

Moylle Kief  
 C. L. Myers  
 James + Alvin Sharp  
 Clarence E. + Marion E. Graul

40 RDS. OF GOVT LOT 5 &  
 SW 1/4 OF SE 1/4 S. OF RD. LESS SOLD  
 W. 20 RDS. OF GOVT LOT 5 & W. 20 RDS.  
 OF SW 1/4 OF SE 1/4 N. OF ROAD  
 E. 20 RDS. OF GOVT LOT 5  
 E. 20 RDS. OF W. 40 RDS. OF GOVT LOT 5  
 & E. 20 + W. 10 RDS. OF SW 1/4 OF SE 1/4

32  
 13  
 875  
 8

Yes  
 No  
 Yes  
 No  
 No  
 No  
 No  
 No  
 No  
 No  
 No

C  
 C  
 F  
 L

150 added by T. H. H.  
 252 added by T. H. H.

# 124  
 462

Cass County, Minnesota, for Taxes for the Year 1961.

SOLD FOR TAXES	VALUATIONS BY SCHOOL DISTRICTS AS EQUALIZED BY DEPARTMENT OF TAXATION						Tax Including State Homestead	State Tax on Non-Homestead	SPECIAL TAXES	SPECIAL TAXES	TOTAL TAXES	PAID	WHEN PAID	Number of Receipt	March Settlement 1962	June Settlement 1962	Penalty	November Settlement 1962	Penalty	Collections to First Monday in January 1963	Penalty	Delinquent on First Monday in January 1963	Total Delinquent Tax and Penalty	REMARKS	
	District No.	District No.	District No.	District No.	District No.	District No.																			
	Rate	Rate	Rate	Rate	Rate	Rate																			

H 112  
 140  
 H 113  
 320  
 H 124  
 462  
 40

8480  
 14570  
 19718  
 1346

128  
 292  
 422  
 36

8608  
 14862  
 20140  
 1382

PAID IN FULL  
 PAID IN FULL

16503  
 9873  
 17808  
 19355  
 16826

43 04  
 148 62  
 100 70  
 13 82

43 04  
 5 20  
 100 70  
 13 82

10561  
 2571  
 10560  
 10559

H 349  
 962  
 1377

44114

878

44992

157 56

292 26

Part of  
 Part of  
 Part of

Assessment Roll and Tax List of Real Property in the Town of Rogers

\* Indicate Type of Property: R-Residential, C-Commercial, I-Industrial, U-Utility, F-Farm, L-Lakeshore, T-Timber, M-Mineral

Form 5CD - MILLER-DAVIS CO., MINNEAPOLIS

Table with columns: IN WHOSE NAME ASSESSED, DESCRIPTION OF PROPERTY, TRUE AND FULL VALUATIONS, ASSESSED VALUATIONS, FINAL EQUALIZED VALUE.

Cass County, Minnesota, for Taxes for the Year 1961.

Table with columns: VALUATIONS BY SCHOOL DISTRICTS AS EQUALIZED BY DEPARTMENT OF TAXATION, Tax including State Homestead, SPECIAL TAXES, TOTAL TAXES, PAID, WHEN PAID, Number of Receipt, March Settlement, June Settlement, Penalty, Collections to First Monday in January 1963, Delinquent on First Monday in January 1963, Total Delinquent Tax and Penalty, REMARKS.

Plat of Park Part of Rogers Beach



Assessment Roll and Tax List of Real Property in the Town of Rogers

Form 5CD MILLER-DAVIS CO., MINNEAPOLIS

\* Indicate Type of Property: R-Residential, C-Commercial, I-Industrial, U-Utility, F-Farm, L-Lakeshore, T-Timber, M-Mineral

IN WHOSE NAME ASSESSED	DESCRIPTION OF PROPERTY				No. School District	Indicate Homestead Yes or No	Agri. or Recr. Yes or No	Indicate Type of Property	TRUE AND FULL VALUATIONS			ASSESSED VALUATIONS						FINAL EQUALIZED VALUE				
	SUBDIVISION	Sec. of Lot	Town or Block	Rng. of Land					Number of Acres of Land	LAND Exclusive of Structures and Improvements	BUILDINGS and Other Structures	MACHINERY Permanently Attached to Real Estate	TOTAL True and Full Value	RURAL		ALL OTHER			MACHINERY Permanently Attached to Real Estate	Seasonal and Recreational Cabins	TOTAL ASSESSED VALUE	Total Assessed Value as Equalized by the Board of Review
														Homestead Up to \$4,000 20%	Over \$4,000 and Non-Homestead 33 1/3%	Timber Land Class 3e 20%	Homestead Up to \$4,000 25%					
					Acres 100ths				Dollars	Dollars	Dollars	Dollars	Dollars	Dollars	Dollars	Dollars	Dollars	Dollars				
	N E 1/4 of N E 1/4	31	142	27																		
	N W 1/4 of N E 1/4																					
	S W 1/4 of N E 1/4																					
	S E 1/4 of N E 1/4																					
	N E 1/4 of N W 1/4																					
	N W 1/4 of N W 1/4																					
	S W 1/4 of N W 1/4																					
	S E 1/4 of N W 1/4																					
State of Minnesota	N 1/2 of N E 1/4 of S W 1/4																					
State of Minnesota	N W 1/4 of S W 1/4 GOV'T LOT 5																					
State of Minnesota (CONT TO HOMER SANDERS)	S W 1/4 of S W 1/4 GOV'T LOT 6				1/359		Yes	Yes	T													
	S E 1/4 of S W 1/4																					
Wheeler Lumber Bridge & Supply Co.	GOV'T LOT 13				2313		NO	"	"													
	N E 1/4 of S E 1/4																					
	N W 1/4 of S E 1/4																					
State of Minnesota	S W 1/4 of S E 1/4																					
State of Minnesota	S 1/2 of S 1/2 of S E 1/4																					
					6670																	

Cass County, Minnesota, for Taxes for the Year 1961.

SOLD FOR TAXES	VALUATIONS BY SCHOOL DISTRICTS AS EQUALIZED BY DEPARTMENT OF TAXATION						Tax Including State Homestead	State Tax on Non-Homestead	SPECIAL TAXES	SPECIAL TAXES	TOTAL TAXES	PAID	WHEN PAID	Number of Receipt	March Settlement 1962	June Settlement 1962	Penalty	November Settlement 1962	Penalty	Collections to First Monday in January 1963	Penalty	Delinquent on First Monday in January 1963	Total Delinquent Tax and Penalty	REMARKS
	District No.	District No.	District No.	District No.	District No.	District No.																		
	Rate	Rate	Rate	Rate	Rate	Rate																		
	1																							
	2																							
	3																							
	4																							
	5																							
	6																							
	7																							
	8																							
	9																							
	10																							
	11																							
	12																							
	13	SOLD FOR TAXES	H 26								822		822										822	Lease 1955
	14																							
	15		54								1708	50	1758		PAID IN FULL MAY 31 1962 16949		1758							10598
	16																							
	17																							
	18																							
	19																							
	20		H 26 54 80								2530	50	2580											1758

Plat of Park Part of Rogers Reservoir



Assessment Roll and Tax List of Real Property in the Town of Rogers of Rogers

\* Indicate Type of Property: R-Residential, C-Commercial, I-Industrial, U-Utility, F-Farm, L-Lakeshore, T-Timber, M-Mineral

Form 50-D MILLER-DAVIS CO., MINNEAPOLIS

IN WHOSE NAME ASSESSED	DESCRIPTION OF PROPERTY				No. School District	Indicate Home-Stead Yes or No	Agricultural or Seasonal Recreational Yes or No	Indicate Type of Property	TRUE AND FULL VALUATIONS				ASSESSED VALUATIONS						FINAL EQUALIZED VALUE			
	SUBDIVISION	Sec. or Lot	Town or Block	Rng.					Number of Acres of Land	LAND Exclusive of Structures and Improvements	BUILDINGS and Other Structures	MACHINERY Permanently Attached to Real Estate	TOTAL True and Full Value	RURAL		ALL OTHER		MACHINERY Permanently Attached to Real Estate		Seasonal and Recreational Cabins	TOTAL ASSESSED VALUE	Total Assessed Value as Equalized by the Board of Review
														Acres	100ths	Homestead Up to \$4,000 20%	Over \$4,000 and Non-Homestead 33 1/3%					
George D. & Lillian Cramp & George E. Cramp & Dorothy L. Stiegl & Margory V. Cones	GOV'T LOT 1 LESS TO U.S.	33	142	27	28.75	UN	NO	YES	T													
Frank Mac Bain	GOV'T LOT B				44.75		NO	"	"													
"	GOV'T LOT 7				46.25		NO	"	"													
George D. & Lillian Cramp & George E. Cramp & Dorothy L. Stiegl & Margory V. Cones	GOV'T LOT 2 LESS TO U.S.				32		NO	"	"													
	GOV'T LOT 9																					
	GOV'T LOT 11																					
Paul C. Berglund	GOV'T LOT 10				33.50		NO	YES	T													
"							NO	YES	T													
							NO	YES	T													
Joseph Jelen							YES	YES	F													
U. S. of America	GOV'T LOT 3						NO	YES	T													
Paul C. Berglund	LOT 6				16.50		NO	YES	T													
	LOT 5																					
U. S. of America	LOT 4																					
					275.75																	

Cass County, Minnesota, for Taxes for the Year 1961.

SOLD FOR TAXES	VALUATIONS BY SCHOOL DISTRICTS AS EQUALIZED BY DEPARTMENT OF TAXATION						Tax Including State Homestead	State Tax on Non-Homestead	SPECIAL TAXES	SPECIAL TAXES	TOTAL TAXES	PAID	WHEN PAID	Number of Receipt	March Settlement 1962	June Settlement 1962	Penalty	November Settlement 1962	Penalty	Collections to First Monday in January 1963	Penalty	Delinquent on First Monday in January 1963	Total Delinquent Tax and Penalty	REMARKS				
	District No.	District No.	District No.	District No.	District No.	District No.																						
	Rate	Rate	Rate	Rate	Rate	Rate																						
1	67						21.20	62			218.21	2 <sup>nd</sup> HALF PAID OCT 31 1962	19601										22131	10593				
2	45						14.24	42			146.62	PAID IN FULL MAY 15 1962												10607				
3	40						12.66	36			130.23	PAID IN FULL MAY 15 1962	4736															
4	53						16.78	48			172.64	2 <sup>nd</sup> HALF PAID OCT 31 1962	19601											32131	10593			
5																												
6																												
7																												
8																												
9	SOLD FOR TAXES	34					10.76	32			110.89														11.08	2588		
10																												
11	SOLD FOR TAXES	40					12.66	36			130.23															13.02	2588	
12																												
13																												
14		478					24.68				246.81	PAID IN FULL MAY 16 1962	0959													24.68	10595	
15																												
16																												
17	SOLD FOR TAXES	17					5.38	16			55.41															5.54	2588	
18																												
19																												
20		478					118.36	222			121.08															71.90	19.54	29.64

Pa t of Farm Pa rty Rogers Pa rty Pa rty Pa rty

Assessment Roll and Tax List of Real Property in the Dix of Rogers

\* Indicate Type of Property: R-Residential, C-Commercial, I-Industrial, U-Utility, F-Farm, L-Lakeshore, T-Timber, M-Mineral

Form 507 MILLER-DAVIS CO., MINNEAPOLIS

IN WHOSE NAME ASSESSED	DESCRIPTION OF PROPERTY	Subdivision	Sec. or Lot	Town or Block	Rng.	Number of Acres of Land	No. School District	Indicate Homestead Yes or No	Agricultural Use Yes or No	Indicate Type of Property	TRUE AND FULL VALUATIONS			ASSESSED VALUATIONS						Total Assessed Value as Equalized by the Board of Review	FINAL EQUALIZED VALUE		
											LAND Exclusive of Structures and Improvements	BUILDINGS and Other Structures	MACHINERY Permanently Attached to Real Estate	TOTAL True and Full Value	RURAL		ALL OTHER		MACHINERY Permanently Attached to Real Estate			Seasonal and Recreational Cabins	TOTAL ASSESSED VALUE
															Homestead Up to \$4,000 20%	Over \$4,000 and Non-Homestead 33 1/4%	Timber Land Class 3e 20%	Homestead Up to \$4,000 25%					
Acres	100ths	Dollars	Dollars	Dollars	Dollars	Dollars	Dollars	Dollars	Dollars	Dollars	Dollars	Dollars	Dollars	Dollars	Dollars	Dollars							
State of Minnesota	1	N E 1/4 of N E 1/4 4555 15 acs. To U.S.				34 1/4 27	20																
U. S. of America	2	N W 1/4 of N E 1/4																					
U. S. of America	3	S W 1/4 of N E 1/4																					
U. S. of America	4	S E 1/4 of N E 1/4																					
George B. & Lillian M. Cramp & George E. Cramp & Dorothy L. Steinhilber & Maryann V. Conner	5	N E 1/4 of N W 1/4				1/8																	
" " " " "	6	N W 1/4 of N W 1/4				1/8																	
" " " " "	7	S W 1/4 of N W 1/4				1/8																	
" " " " "	8	S E 1/4 of N W 1/4				1/8																	
U. S. of America	11	N E 1/4 of S W 1/4																					
U. S. of America	12	N W 1/4 of S W 1/4																					
U. S. of America	13	S W 1/4 of S W 1/4																					
U. S. of America	14	S E 1/4 of S W 1/4																					
U. S. of America	16	N E 1/4 of S E 1/4																					
U. S. of America	17	N W 1/4 of S E 1/4																					
U. S. of America	18	S W 1/4 of S E 1/4																					
U. S. of America	19	S E 1/4 of S E 1/4																					
	20																						

160

Cass County, Minnesota, for Taxes for the Year 1961.

SOLD FOR TAXES	VALUATIONS BY SCHOOL DISTRICTS AS EQUALIZED BY DEPARTMENT OF TAXATION						Tax Including State Homestead	State Tax on Non-Homestead	SPECIAL TAXES	SPECIAL TAXES	TOTAL TAXES	PAID	WHEN PAID	Number of Receipt	March Settlement 1962	June Settlement 1962	Penalty	November Settlement 1962	Penalty	Collections to First Monday in January 1963	Penalty	Delinquent on First Monday in January 1963	Total Delinquent Tax and Penalty	REMARKS	
	District No.	District No.	District No.	District No.	District No.	District No.																			
	Rate	Rate	Rate	Rate	Rate	Rate																			
	1																								
	2																								
	3																								
	4																								
	5																								
	6	53					16 78	48			17 26													10593	
	7	53					16 78	48			17 26													22131	
	8	53					16 78	48			17 26														
	9	53					16 78	48			17 26														
	10																								
	11																								
	12																								
	13																								
	14																								
	15																								
	16																								
	17																								
	18																								
	19																								
	20																								

212

6712

192

6904

84 52

34 52

Part of Range 100, Township 100N, Range 100W, Section 100













Assessment Roll and Tax List of Real Property in the Town of Rogers

\* Indicate Type of Property: R-Residential, C-Commercial, I-Industrial, U-Utility, F-Farm, L-Lakeshore, T-Timber, M-Mineral

Form 50 - MILLER-DAVIS CO., MINNEAPOLIS

Plat of Lawn Park
Plat of Rogers Beach
Boy Boy Park

Table with columns: IN WHOSE NAME ASSESSED, DESCRIPTION OF PROPERTY, TRUE AND FULL VALUATIONS, ASSESSED VALUATIONS (RURAL, ALL OTHER), and FINAL EQUALIZED VALUE.

Cass County, Minnesota, for Taxes for the Year 1961.

Table with columns: VALUATIONS BY SCHOOL DISTRICTS AS EQUALIZED BY DEPARTMENT OF TAXATION, Tax Including State Homestead, SPECIAL TAXES, TOTAL TAXES, PAID, WHEN PAID, and various settlement/penalty amounts.

Handwritten summary totals: 55, 1848, 44, 1892, 1892

