

ASSESSMENT & TAX LIST

Remer
1948

no cly
by sup Bd

Wilmington Park

REAL

El-tr-oh

SEASONAL

SUMMARY OF TAX COLLECTION

Original Levy	- - - - -	\$ 2358.77	
Additions	- - - - -	\$ _____	
<i>CANCELLATIONS</i>			\$ 99.44
Abatements	- - - - -	\$ _____	
			\$ 2259.30
COLLECTIONS			
March Settlement	- - - - -	\$ 250.99	
June Settlement	- - - - -	\$ 1146.45	
November Settlement	- - - - -	\$ 568.84	
January Settlement	- - - - -	\$ 103.38	\$ _____
			\$ _____
Over Collected	(Pa - - - - -)	\$ _____	
Under Collected	(Pa - in advance)	\$ 17.88	
Delinquent	- - - - -	\$ 176.76	\$ _____
Total	- - - - -		\$ 2259.30

REAL

Etlich

PERSONAL

Treasurer's Office, Cass County, Minnesota

RECEIVED this, the first Monday (being the 3rd day) of January, A. D. 1949, of L. C. Peterson, Auditor of said County, Minnesota, the Tax List of all Taxable Real and Personal Property in the Town of Remer, in said County for the year A. D. 1948, as specified above and amounting to 100 Dollars

Paul D. Jewell
County Treasurer.

Auditor's Office, Cass County, Minnesota

I, Auditor of said County, and State of Minnesota, do hereby certify that the following is a correct list of the Taxes levied on the Real and Personal Property in the of for the year 1948.

WITNESS my hand and official seal, the day of 1949.

(SEAL) County Auditor.

Office of County Treasurer, Cass County, Minnesota

To L. C. Peterson, County Auditor:

January 2 - 1949
Sir: I herewith return to you the Tax List for the Town of Remer in said County for the year 1948, heretofore received from you. I certify that I have compared the same with the duplicate receipts in your office, and have written opposite the amount of each tax so receipted the words "First Quarter Paid", "Second Quarter Paid", "Third Quarter Paid" or "Paid in full" as the case may be, and the number of my receipt given in discharge of said tax, and each tract or lot of real property against which the taxes remain unpaid or delinquent for said year.

Yours respectfully,
Paul D. Jewell
County Treasurer.

Auditor's Office, Cass County, Minnesota

194
I hereby certify that on the first Monday in January 1950, I received of County Treasurer, the Tax List of the of in said County for the year 1948; that I have compared the said list with the Statements receipted for by said Treasurer, which are on file in my office, and that each tract or lot of real property therein against which the taxes, or any part thereof, remains unpaid are delinquent for said year.

(SEAL) County Auditor.

TABULAR SCHEDULE OF VALUATIONS,

LEVIED IN THE Township of Remer OF County of Cass

RATES AND TAXES

COUNTY OF CASS, STATE OF MINNESOTA

Handwritten: 25 1.51, 3.86, 355.37

School District No.	VALUATION BY SCHOOL DISTRICTS				RATE OF STATE TAXES Total Rate of State Tax Mills	RATE OF COUNTY TAXES						Total Rate of County Tax Mills	RATE OF TOWN TAXES										Total Rate of Town Tax Mills	SCHOOL TAXES		TAXES LEVIED																		
	Agricultural Lands Dollars	Non-Agricultural Lands Dollars	Personal Property Dollars	Total Value of all Property except Money and Credits Dollars		Rev.	R. & B.	Welfare	Bonds and Int.	Skq.	Total Rate of County Tax		Rev.	R. & B.	Drag Tax	State Loan	Fire	Mills	Mills	Mills	Mills	Mills		Mills	Mills	Mills	Mills	Mills	Mills	Mills	Mills	Mills	Mills	Total Rate of Sch'l Tax Mills	Total Rate of all Taxes Mills	LOCAL 1 MILL AND SPECIAL SCHOOL TAXES BY DISTRICTS				Total School Taxes	ALL OTHER TAXES			
																																				Local	Special	State Loan	Def. Incap. Bid		FUNDS	Rate	Amounts	
21	7044	765	1379	9188	H. 291	234	72	485	79	65	93.5	272	136	1	5	46.8	1	15	24	45	18	21.5	123.3	251.51	226.51	705	10566	16906	31699	1269	15146	76291	State—Non-Homestead,	2675										
					N.H. 386																														State—Homestead,	1546								
																																				County Revenue,	21502							
Assessed Value Homestead	Rural 5154	All Other	Personal Property	Total 5154																																County Road and Bridge,	6616							
Non-Homestead	2655		1379	4034																																County Welfare,	44567							
Total	7809		1379	9188																																Bonds and Interest	7259							
																																					5k9.	5973						
																																						Town Revenue,	24943					
																																						Town Road and Bridge,	12497					
																																						Town Drag,	920					
																																							Town State Loan,	4595				
																																							Five	420.05				
																																							School Local 1 Mill,	920				
																																							School Special,	16998				
																																								School State Loan,	22052			
																																								Deficiency	41348			
																																								Tuition	1656			
																																								Transportation	19757			
																																								1348	1027.31			

Handwritten: 24, Total Levy, \$2358, 420.05, 1027.31, 1985.92, 372.82, 2358.74

Total Taxes Real Estate 1985.92
Pers. Prop. 372.82
Total 2358.74

I, J. G. Peterson, Auditor of said County and State aforesaid, do hereby certify that the foregoing is true and correct Schedule, showing the valuation of all the taxable property, in the Sup several Tax Funds levied thereon for the year A. D. 1948, in said County, the several rates of Taxation and Totals of the

Witness my hand and official seal, this 21 day of Jan A. D. 1948

J. G. Peterson
County Auditor.

REAL ESTATE SECTION

FUNDS	MARCH SETTLEMENT 1947	JUNE SETTLEMENT 1949	NOV. SETTLEMENT 1949	Amount Collected from Nov. 1947 to First Monday in Jan. 1949	REDUCTIONS	Total Reductions and Collected	BALANCE UNCOLLECTED	ADDITIONS	Total Uncollected to First Monday in January, 1949
State—Non-Homestead, State—Homestead,	342 273	1389 583	343 638	120					
County Revenue, County Road and Bridge, County Welfare, County Bond and Interest, <i>Skp.</i>	2199 677 458 742 611	10523 3238 21810 3552 2923	5128 1578 10629 1731 1425	962 246 1944 325 267					
Town Revenue, Town Road and Bridge, Town Drag, Town State Loan, <i>fire</i>	2556 1278 93 470	12231 6116 450 2248	5761 2781 219 1076	1118 559 41 206					
School Local 1 Mill, School Special, School State Loan, Deficiency Tuition Transportation <i>B+I</i>	94 2532 2255 4229 167 2024	450 7708 10792 20235 809 4668	219 4209 5207 9862 374 4712	41 615 986 1850 74 884					
	25099	114645	56384	10338					

	SCHOOL DISTRICT NO.	LOCAL 1 MILL	SPECIAL	STATE LOAN	Defi.	Imp.	B+I	TOTALS
MARCH SETTLEMENT	School District No. <i>Q-C-1</i> <i>7A-C-1</i>	19 75	289 2243	463 1792	868 3361	35 134	415 1606	2087 7211
	Totals	94	2532	2255	4229	169	2021	11300
	School District No. <i>Q-C-1</i> <i>7A-C-1</i>	386 64	5783 1925	9252 1540	17348 2887	694 115	8289 1379	41752 7910
JUNE SETTLEMENT	Totals	450	7708	10792	20235	809	9668	49662
NOVEMBER SETTLEMENT	School District No. <i>Q-C-1</i> <i>7A-C-1</i>	158 61	2368 1841	3787 1472	7101 2768	284 110	3373 1319	17071 7064
	Totals	219	4209	5259	7862	374	4712	24655
	School District No. <i>Q-C-1</i>	41	615	986	1850	74	884	4450
NOVEMBER to JANUARY	Totals	41	615	986	1850	74	884	4450
ADDITIONS	School District No.							
	Totals							
REDUCTIONS	School District No.							
	Totals							

REAL

Attachment

RECORD

No. 27.

John S. Lewis and wife.

to

Clarence W. Boteler.

Warranty Deed. \$1.00

Dated June 29, 1934.

Filed July 17, 1934 at 9 a.m.

Book 70 of Deeds, page 482.

Signed: 2 witnesses.

Duly acknowledged.

No.



Sw of NW 2-141-26

495
165

660

165
660

9900
9900

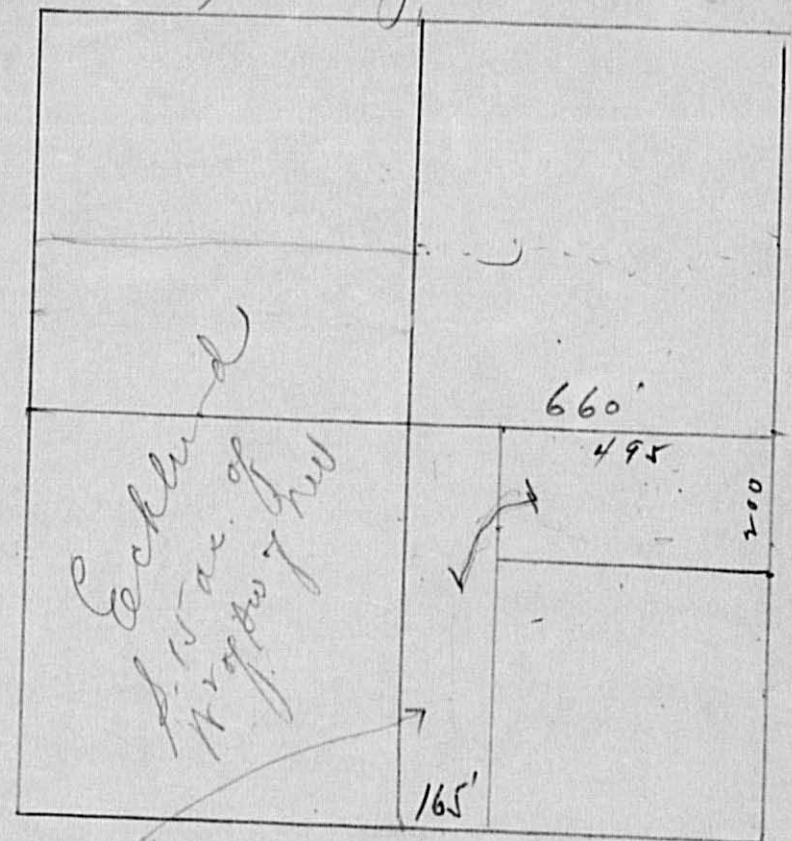
108900

495
200

99000
108900

207900

43)



SW-165' of SE of SW 1/4 of NW 1/4
 N-200' of E-495' of SW
 4.75

Ecklund

4.75 acres

12-26
 12-26

Assessment Roll and Tax List of Real Property in the Town of Remer, Cass County, Minnesota, for Taxes for the Year 1948.

Cass County, Minnesota, for Taxes for the Year 1948.

Table with columns: IN WHOSE NAME ASSESSED, TO WHOM TRANSFERRED, DESCRIPTION OF PROPERTY, TRUE AND FULL VALUATIONS, ASSESSED VALUATIONS, VALUATIONS BY SCHOOL DISTRICTS AS EQUALIZED BY DEPARTMENT OF TAXATION, TAXES, PAID, WHEN PAID, etc. Includes handwritten entries for various property owners like George L. Dunfee, Bertie Locke, John H. + Bernice M. Hayes, John + Anna Eklund, Frank Osborne, Carl H. + Bernice L. Rosin.

Assessment Roll and Tax List of Real Property in the *Town* of *Ramus*

Cass County, Minnesota, for Taxes for the Year 1948.

Table with columns: IN WHOSE NAME ASSESSED, TO WHOM TRANSFERRED, DESCRIPTION OF PROPERTY (Subdivision, Sec. or Lot, Town or Block, Rng., Acres, 100ths), TRUE AND FULL VALUATIONS (LAND, BUILDINGS, MACHINERY, TOTAL True and Full Value), ASSESSED VALUATIONS (RURAL: Homestead 20%, Over \$4,000 and Non-Homestead 33 1/3%; ALL OTHER: Homestead 25%, Over \$4,000 and Non-Homestead 40%; MACHINERY Permanently Attached to Real Estate 33 1/3%), VALUATIONS BY SCHOOL DISTRICTS AS EQUALIZED BY DEPARTMENT OF TAXATION (District No., Rate, Mills; Tax including State Homestead, State Tax on Non-Homestead, SPECIAL TAXES, TOTAL TAXES), PAID, WHEN PAID (Month, Day, Year), Number of Receipt, March Settlement 1949, June Settlement 1949, Penalty, November Settlement 1949, Penalty, Collections to First Monday in January 1950, Penalty, Delinquent on First Monday in January 1950, Total Delinquent Tax and Penalty, REMARKS.

Main data rows of the assessment roll, including entries for 'U. S. of America' and 'State of Minnesota' with handwritten lot numbers (Lot 1, 2, 3, 4, 5, 6, 7) and subdivision descriptions.

Partington Park

Blotch

PERSONAL

Assessment Roll and Tax List of Real Property in the Lawn of Remer,

Cass County, Minnesota, for Taxes for the Year 1948.

IN WHOSE NAME ASSESSED	TO WHOM TRANSFERRED	DESCRIPTION OF PROPERTY				TRUE AND FULL VALUATIONS			ASSESSED VALUATIONS					FINAL EQUALIZED VALUE	SOLD FOR TAXES	VALUATIONS BY SCHOOL DISTRICTS AS EQUALIZED BY DEPARTMENT OF TAXATION						SPECIAL TAXES	TOTAL TAXES	PAID	WHEN PAID	Number of Receipt	March Settlement 1949	June Settlement 1949	Penalty	November Settlement 1949	Penalty	Collections to First Monday in January 1950	Penalty	Delinquent on First Monday in January 1950	Total Delinquent Tax and Penalty	REMARKS							
		SUBDIVISION	Sec. of Lot	Town or Block	Rng.	Number of Acres of Land		LAND Exclusive of Structures and Improvements	BUILDINGS and Other Structures	MACHINERY Permanently Attached to Real Estate	TOTAL True and Full Value	RURAL				ALL OTHER		MACHINERY Permanently Attached to Real Estate	TOTAL ASSESSED VALUE	Total Assessed Value as Equalized by the Board of Review	District No.																District No.	District No.	District No.	District No.	District No.	Tax including State Homestead	State Tax on Non-Homestead
						Acres	100ths					Up to \$4,000 20%	Over \$4,000 and Non-Homestead 33 1/3%			Up to \$4,000 25%	Over \$4,000 and Non-Homestead 40%																										
		Dollars	Dollars	Dollars	Dollars	Dollars	Dollars	Dollars	Dollars	Dollars	Dollars	Dollars	Dollars			Dollars	Dollars	Dollars	Dollars	Dollars	Mills																Mills	Mills	Mills	Mills	Mills	\$ cts.	\$ cts.
Albert J. Sophie + Clyde A. Kinger		14 14 26	41				220	350	570	114				114			114																										
"			41		25		180		180	36				36			36																										
"			41		63		210		210	42				42			42																										
"			41		05		330		330	66				66			66																										
"			41				205		205	41				41			41																										
U. S. of America																																											
U. S. of America																																											
"			40		87	"	225		225	45				45			45																										
Kiel + June Martin			40		86	"	260		260	52				52			52																										
Swann + Cecilia E. Johnson			40		83	"	340		340	68				68			68																										
"			40		61	"	285	250	535	107				107			107																										
Kiel + June Martin			40		79	"	190	150	340	68				68			68																										
Cass County			41		91	"			600	120				120			120																										
Kielped K. Kinger			42				210		210	70				70			70																										
Chas. A. Graham			41		66	"	210		210	70				70			70																										
State of Minnesota - Chas. A. Graham			41		55	"	205		205	41				41			41																										
Kielped + Arthur Kinger																																											
			578		01		3415	1005	4420	800	140			940			940																										

1 PAID IN FULL SEP 1 2 1949
 2 PAID IN FULL SEP 1 2 1949
 3 PAID IN FULL SEP 1 2 1949
 4 PAID IN FULL SEP 1 2 1949
 6 PAID IN FULL SEP 1 2 1949
 9 PAID IN FULL SEP 1 2 1949
 11 PAID IN FULL MAY 1 8 1949
 12 1st Half Paid MAY 1 8 1949
 13 2nd Half Paid OCT 2 5 1948
 14 1st Half Paid MAY 3 1 1949
 14 2nd Half Paid OCT 2 5 1948
 16 2nd Half Paid MAY 3 1 1949
 16 1st Half Paid MAY 3 1 1949
 17 17 88
 18 17 88
 19 10 32
 20 236 44 56 237 00

6490 195
 1032 31
 1132 34
 1308
 853
 1346
 1246
 1509
 1509
 17 88 9/19/67
 41/09 283 9013
 Chas 490 Law 47 (1948 Tax Due)
 10 32
 17 88

Assessment Roll and Tax List of Real Property in the *Town* of *Remer*,

Cass County, Minnesota, for Taxes for the Year 1948.

Table with columns: IN WHOSE NAME ASSESSED, TO WHOM TRANSFERRED, DESCRIPTION OF PROPERTY (SUBDIVISION, Acres, 100ths), TRUE AND FULL VALUATIONS (LAND, BUILDINGS, MACHINERY, TOTAL), ASSESSED VALUATIONS (RURAL, ALL OTHER, MACHINERY, TOTAL ASSESSED VALUE), VALUATIONS BY SCHOOL DISTRICTS AS EQUALIZED BY DEPARTMENT OF TAXATION, SOLD FOR TAXES, PAID, WHEN PAID, and REMARKS. The table lists 20 parcels of land, mostly owned by the State of Minnesota.

Assessment Roll and Tax List of Real Property in the Lower of Remer,

Cass County, Minnesota, for Taxes for the Year 1948.

FORM 35-D (MAY 1947 EDITION) MINNAPOLIS

Table with columns: IN WHOSE NAME ASSESSED, TO WHOM TRANSFERRED, DESCRIPTION OF PROPERTY, TRUE AND FULL VALUATIONS, ASSESSED VALUATIONS, VALUATIONS BY SCHOOL DISTRICTS AS EQUALIZED BY DEPARTMENT OF TAXATION, and REMARKS. Includes rows for U.S. of America, State of Minnesota, and various land parcels (Lots 1-5).

DESCRIPTION OF PROPERTY

TRUE AND FULL VALUATIONS

ASSESSED VALUATIONS

FINAL EQUALIZED VALUE

IN WHOSE NAME ASSESSED	TO WHOM TRANSFERRED	SUBDIVISION		No. School District	Indicate Homestead Yes or No	Indicate Agricultural Yes or No	TRUE AND FULL VALUATIONS				ASSESSED VALUATIONS				FINAL EQUALIZED VALUE Dollars
		Sec. or Lot	Town or Block				Range	Number of Acres of Land	LAND Exclusive of Structures and Improvements	BUILDINGS and Other Structures	MACHINERY Permanently Attached to Real Estate	TOTAL True and Full Value	RURAL Homestead Up to \$4,000 20% Over \$4,000 and Non-Homestead 33 1/3%	ALL OTHER Homestead Up to \$4,000 25% Over \$4,000 and Non-Homestead 40%	
				Acres	100ths			Dollars	Dollars	Dollars	Dollars	Dollars	Dollars	Dollars	Dollars
U. S. of America															
U. S. of America															
U. S. of America															
U. S. of America															
Clyde + Alice L. Hagenbach															
U. S. of America								40	290	200	490	98		98	
U. S. of America															
U. S. of America															
U. S. of America															
U. S. of America															

SOLD FOR TAXES	VALUATIONS BY SCHOOL DISTRICTS AS EQUALIZED BY DEPARTMENT OF TAXATION						Tax including State Homestead	State Tax on Non-Homestead	SPECIAL TAXES	TOTAL TAXES	PAID	WHEN PAID	Number of Receipt	March Settlement 1949	June Settlement 1949	Penalty 1949	November Settlement 1949	Penalty 1949	Collections to First Monday in January 1950	Penalty 1950	Delinquent on First Monday in January 1950	Total Delinquent Tax and Penalty	REMARKS
	District No.	District No.	District No.	District No.	District No.	District No.																	
	Rate	Rate	Rate	Rate	Rate	Rate																	

Mortgage Part

Etch

PERSONAL

IN WHOSE NAME ASSESSED	TO WHOM TRANSFERRED	DESCRIPTION OF PROPERTY				TRUE AND FULL VALUATIONS											SOLD FOR TAXES	VALUATIONS BY SCHOOL DISTRICTS AS EQUALIZED BY DEPARTMENT OF TAXATION											REMARKS																			
		SUBDIVISION	Sec. or Lot	Town or Block	No. of Acres of Land	LAND Exclusive of Structures and Improvements	BUILDINGS and Other Structures	MACHINERY Permanently Attached to Real Estate	TOTAL True and Full Value	RURAL		ALL OTHER		MACHINERY Permanently Attached to Real Estate	TOTAL ASSESSED VALUE	Total Assessed Value as Equalized by the Board of Review		FINAL EQUALIZED VALUE	District No.	District No.	District No.	District No.	District No.	District No.	Tax including State Homestead	State Tax on Non-Homestead	SPECIAL TAXES	TOTAL TAXES		PAID	WHEN PAID	Number of Receipt	March Settlement 1949	June Settlement 1949	Penalty	November Settlement 1949	Penalty	Collections to First Monday in January 1950	Penalty	Delinquent on First Monday in January 1950	Total Delinquent Tax and Penalty							
										Homestead Up to \$4,000 20%	Over \$4,000 and Non-Homestead 33 1/4%	Homestead Up to \$4,000 25%	Over \$4,000 and Non-Homestead 40%																													Rate.....	Rate.....	Rate.....	Rate.....	Rate.....	Rate.....	Rate.....
U. S. of America		1			NE 1/4 of NE 1/4																																											
U. S. State of Minnesota		2			NW 1/4 of NE 1/4																																											
U. S. of America		3			SW 1/4 of NE 1/4																																											
U. S. of America		4			SE 1/4 of NE 1/4																																											
U. S. of America		5			NE 1/4 of NW 1/4																																											
U. S. State of Minnesota	W. H. Hicks	7			NW 1/4 of NW 1/4 Lot 1			201			67		67			67																																
U. S. of America		8			SW 1/4 of NW 1/4 Lot 2																																											
U. S. of America		9			SE 1/4 of NW 1/4																																											
U. S. of America		10																																														
U. S. State of Minnesota		12			NW 1/4 of SW 1/4 Lot 3																																											
U. S. of America		13			SW 1/4 of SW 1/4																																											
U. S. of America		14			SE 1/4 of SW 1/4																																											
State of Minnesota		16			NE 1/4 of SE 1/4																																											
State of Minnesota		17			NW 1/4 of SE 1/4 Lot 5																																											
		18			SW 1/4 of SE 1/4																																											
		19			SE 1/4 of SE 1/4																																											
		20																																														
								39.10			201		201	67		67																																
																	67																															
																	67																															

Map-Log on Part

Elkhorn

PERSONAL

1712

Assessment Roll and Tax List of Real Property in the Sum of Remer

Cass County, Minnesota, for Taxes for the Year 1948.

IN WHOSE NAME ASSESSED	TO WHOM TRANSFERRED	DESCRIPTION OF PROPERTY				TRUE AND FULL VALUATIONS				ASSESSED VALUATIONS					FINAL EQUALIZED VALUE	SOLD FOR TAXES	VALUATIONS BY SCHOOL DISTRICTS AS EQUALIZED BY DEPARTMENT OF TAXATION						PAID	WHEN PAID	Number of Receipt	March Settlement 1949	June Settlement 1949	November Settlement 1949	Collections to First Monday in January 1950	Penalty	Delinquent on First Monday in January 1950	Total Delinquent Tax and Penalty	REMARKS																															
		SUBDIVISION	Sec. or Lot	Town or Block	Rng.	Number of Acres of Land	Machinery Permanently Attached to Real Estate	TOTAL True and Full Value	RURAL		ALL OTHER		Machinery Permanently Attached to Real Estate	TOTAL ASSESSED VALUE			Total Assessed Value as Equalized by the Board of Review	District No.	District No.	District No.	District No.	District No.												Tax including State Homestead	State Tax on Non-Homestead	SPECIAL TAXES	TOTAL TAXES	PAID			WHEN PAID																							
									Acres	100ths	No. School District	Indicate Homestead Yes or No																										Indicate Agricultural Yes or No	Dollars	Dollars	Dollars	Dollars	Dollars	Dollars	Dollars	Dollars	Dollars	Dollars	Dollars	Dollars	Dollars	Dollars	Dollars	Dollars	Dollars	Dollars	Dollars	Dollars	Dollars	Dollars	Dollars	Dollars	Dollars	Dollars
		NE 1/4 of NE 1/4																																																														
		NW 1/4 of NE 1/4																																																														
		SW 1/4 of NE 1/4																																																														
		SE 1/4 of NE 1/4																																																														
	<u>Hortense Strochein Irvin Chasora Becker Lot 1</u>					2370		190		224		414		138																																																		
		NE 1/4 of NW 1/4																																																														
		NW 1/4 of NW 1/4																																																														
		SW 1/4 of NW 1/4																																																														
		SE 1/4 of NW 1/4																																																														
		NE 1/4 of SW 1/4																																																														
		NW 1/4 of SW 1/4																																																														
		SW 1/4 of SW 1/4																																																														
		SE 1/4 of SW 1/4																																																														
		NE 1/4 of SE 1/4																																																														
		NW 1/4 of SE 1/4																																																														
		SW 1/4 of SE 1/4																																																														
		SE 1/4 of SE 1/4																																																														
						2370		190		224		414		138																																																		

5 SOLD FOR TAXES 138 3470 54 3524 PAID IN FULL JAN 20 1949 3524

3524

Arkington Park Etrich PERSONAL

IN WHOSE NAME ASSESSED	TO WHOM TRANSFERRED	DESCRIPTION OF PROPERTY				TRUE AND FULL VALUATIONS							ASSESSED VALUATIONS				FINAL EQUALIZED VALUE	SOLD FOR TAXES	VALUATIONS BY SCHOOL DISTRICTS AS EQUALIZED BY DEPARTMENT OF TAXATION						SPECIAL TAXES	TOTAL TAXES	PAID	WHEN PAID	Number of Receipt	March Settlement 1949	June Settlement 1949	Penalty	November Settlement 1949	Penalty	Collections to First Monday in January 1950	Penalty	Delinquent on First Monday in January 1950	Total Delinquent Tax and Penalty	REMARKS
		SUBDIVISION	Sec. or Lot	Town or Block	Rng.	Number of Acres of Land	LAND Exclusive of Structures and Improvements	BUILDINGS and Other Structures	MACHINERY Permanently Attached to Real Estate	TOTAL True and Full Value	RURAL		ALL OTHER		MACHINERY Permanently Attached to Real Estate	TOTAL ASSESSED VALUE			Total Assessed Value as Equalized by the Board of Review	District No.	District No.	District No.	District No.	District No.															
Acres	100ths				Dollars	Dollars	Dollars	Dollars	Homestead Up to \$4,000 20%	Over \$4,000 and Non-Homestead 33 1/3%	Homestead Up to \$4,000 25%	Over \$4,000 and Non-Homestead 40%	Dollars	Dollars	Dollars	Dollars	Dollars	Dollars	Dollars	Dollars	Dollars	Mills	Mills	Mills	Mills	Mills	Mills	\$ cts.	\$ cts.	\$ cts.	\$ cts.	\$ cts.	\$ cts.	\$ cts.	\$ cts.	\$ cts.	\$ cts.		
U. S. of America																																							
U. S. State of Minnesota																																							
U. S. of America																																							
U. S. of America																																							
U. S. of America																																							
U. S. of America																																							
U. S. of America																																							
U. S. of America																																							
U. S. of America																																							
U. S. of America																																							
U. S. of America																																							
U. S. of America																																							
U. S. of America																																							
U. S. of America																																							
U. S. of America																																							
U. S. of America																																							
U. S. of America																																							
U. S. of America																																							
U. S. of America																																							
U. S. of America																																							

Harrietson Park

Etrich

PERSONAL

Assessment Roll and Tax List of Real Property in the _____ of _____,

Form 50-D (with 1947 Contract, optional)

IN WHOSE NAME ASSESSED	TO WHOM TRANSFERRED	DESCRIPTION OF PROPERTY					TRUE AND FULL VALUATIONS		ASSESSED VALUATIONS							FINAL EQUALIZED VALUE	REMARKS
		SUBDIVISION	Sec. of Lot	Town or Block	Rng.	Number of Acres of Land Acres 100ths	LAND Exclusive of Structures and Improvements	BUILDINGS and Other Structures	MACHINERY Permanently Attached to Real Estate	TOTAL True and Full Value	RURAL		ALL OTHER		MACHINERY Permanently Attached to Real Estate		
											NE 1/4 of NE 1/4						
		NW 1/4 of NE 1/4															
		SW 1/4 of NE 1/4															
		SE 1/4 of NE 1/4															
		NE 1/4 of NW 1/4															
		NW 1/4 of NW 1/4															
		SW 1/4 of NW 1/4															
		SE 1/4 of NW 1/4															
		NE 1/4 of SW 1/4															
		NW 1/4 of SW 1/4															
		SW 1/4 of SW 1/4															
		SE 1/4 of SW 1/4															
		NE 1/4 of SE 1/4															
		NW 1/4 of SE 1/4															
		SW 1/4 of SE 1/4															
		SE 1/4 of SE 1/4															

Cass County, Minnesota, for Taxes for the Year 1948.

SOLD FOR TAXES	VALUATIONS BY SCHOOL DISTRICTS AS EQUALIZED BY DEPARTMENT OF TAXATION						Tax including State Homestead	State Tax on Non-Homestead	SPECIAL TAXES	TOTAL TAXES	PAID	WHEN PAID	Number of Receipt	March Settlement 1949	June Settlement 1949	November Settlement 1949	Penalty	Collections to First Monday in January 1950	Penalty	Delinquent on First Monday in January 1950	Total Delinquent Tax and Penalty	REMARKS															
	District No.	District No.	District No.	District No.	District No.	District No.																	\$ cts.	\$ cts.	\$ cts.	\$ cts.	Month Day Year	\$ cts.	\$ cts.	\$ cts.	\$ cts.	\$ cts.	\$ cts.	\$ cts.	\$ cts.		

[Handwritten signature]
[Handwritten scribble]

