

Assessment & Tax List - 1963
Powers

NAME OF OWNER

TABULAR SCHEDULE OF VALUATIONS,

LEVIED IN THE Town OF Roseton

RATES AND TAXES

COUNTY OF CASS, STATE OF MINNESOTA

School District No.	VALUATION BY SCHOOL DISTRICTS				RATE OF STATE TAXES	RATE OF COUNTY TAXES								RATE OF TOWN TAXES								RATE OF				
	Dollars	Dollars	Dollars	Total Value of all Property except Money and Credits Dollars	Total Rate of State Tax Mills	Rev.	R. & B.	Welfare	Bonds and Int.	C. H. Bldg	Pers	Total Rate of County Tax Mills	Rev.	R. & B.	State Loan	Fire	Local	Special	State	Deficiency	Tuition	Transportation	C. H. Bldg	Pers	Total Rate of Town Tax Mills	
																										Local
114	52,110	31,010	na	91,806	8.22	31.51	20.	59.51	1.92	2.	5.17	122.83	4.94	26.	2.97											32.91
Wm	11,316	9,046	na	22,235																						
	63,426	40,056	10,559	114,041																						
						8.92																				
						17.14																				

Assessment of

COLLECTIONS OF TAXES OF 196

OF

CASS COUNTY, MINNESOTA

FUNDS	MARCH SETTLEMENT	JUNE SETTLEMENT	NOV. SETTLEMENT	Amount Collected from Nov. 1964 to First Monday in Jan. 1965	REDUCTIONS	Total Reductions and Collected	BALANCE UNCOLLECTED	ADDITIONS	Total Uncollected to First Monday in January, 1965
	1964	1964	1964						
State-Non-Homestead,	60.12	411.59	143.07	13.16					
State-Homestead,	62.68	506.59	203.58	12.60					
County Revenue,	360.56	1961.34	793.37	51.60					
County Road and Bridge,	238.85	1244.90	503.57	32.76					
County Welfare,	680.96	3704.19	1498.37	97.46					
County Bond and Interest,	21.97	119.51	48.34	3.15					
Co. Nurse	10.07	54.78	22.17	1.44					
PE. P.P.	59.16	321.81	130.17	8.47					
Civil Defron	2.06	11.20	4.53	.29					
Town Revenue,	56.53	307.49	124.38	8.09					
Town Road and Bridge,	286.08	1556.12	624.46	40.94					
Town State Loan,									
C.H. Bldg.	22.87	124.49	50.36	3.28					
Agri. Assn.	5.49	27.88	12.07	.79					
Imp.	13.50	73.45	29.71	1.93					
Fire	33.97	184.87	74.78	4.86					
School Local 1 Mill,									
School Special,	461.57	2065.19	845.94	53.39					
School State Loan,									
Deficiency	536.67	2747.54	1139.98	75.05					
Tuition									
Transportation C.O.	255.50	1542.51	598.56	38.13					
	3158.63	16967.45	6902.43	447.39					

SCHOOL DISTRICT NO.	LOCAL 1 MILL	SPECIAL	STATE LOAN	Deficiency	C.O.	TOTALS
MARCH SETTLEMENT						
School District No. 114a		5.76		21.40		27.36
114a		108.54		195.43		303.97
114a		74.59		113.15	90.39	278.13
114a		222.48		206.69	165.11	644.28
Totals		461.57		536.67	255.50	1253.74
JUNE SETTLEMENT						
School District No. 114a		136.91		493.08		629.99
114a		179.66		323.53		503.19
114a		796.77		1208.86	965.69	2971.92
114a		951.85		722.07	576.82	2250.74
Totals		2065.19		2747.54	1542.51	6355.24
NOVEMBER SETTLEMENT						
School District No. 114a		55.20		198.81		254.01
114a		106.56		191.89		298.45
114a		253.54		384.67	307.29	945.50
114a		480.64		364.61	291.27	1136.52
Totals		895.94		1137.98	598.56	2634.48
NOVEMBER to JANUARY						
School District No. 114a		17.14		25.99	20.76	63.89
114a		28.67		21.75	17.37	67.79
114a		7.58		2.73		10.31
Totals		53.39		50.47	38.13	141.99
ADDITIONS						
School District No.						
Totals						
REDUCTIONS						
School District No.						
Totals						

Real Estate

LELAND'S POINT
ROSLAND
RICH
DICKSON
HARRISON
HARRISON
BY ASH
EL SUZUKI
MILWAUKEE
HALAND'S LAKE SHORE ON
RENTY LAKE

Assessment Roll and Tax List of Real Property in the Town of Powers

Cass County, Minnesota, for Taxes for the Year 1963.

* Indicate Type of Property: R-Residential, C-Commercial, I-Industrial, U-Utility, F-Farm, L-Lakeshore, T-Timber, M-Mineral

Form 5C MILLER-DAVIS CO., MINNEAPOLIS

Table with columns: IN WHOSE NAME ASSESSED, DESCRIPTION OF PROPERTY, TRUE AND FULL VALUATIONS, VALUATIONS BY SCHOOL DISTRICTS AS EQUALIZED BY DEPARTMENT OF TAXATION, Tax including State Homestead, SPECIAL TAXES, TOTAL TAXES, PAID, WHEN PAID, Number of Receipt, March Settlement 1964, June Settlement 1964, Penalty, November Settlement 1964, Penalty, Collections to First Monday in January 1965, Delinquent on First Monday in January 1965, Total Delinquent Tax and Penalty, REMARKS.

MILLER'S POINT, MOONLAND, RYCH, DES MOINES, HORSBROOK, BY ASCH, EL SUENO, RYLAND, MILLER'S LAKESHORE ON RIVER LAKE

Assessment Roll and Tax List of Real Property in the Town of Powers, Cass County, Minnesota

Form 50 MILLER-DAVIS CO., MINNEAPOLIS

Table with columns: IN WHOSE NAME ASSESSED, DESCRIPTION OF PROPERTY, TRUE AND FULL VALUATIONS, ASSESSED VALUATIONS, and FINAL EQUALIZED VALUE. Includes handwritten entries for various lots and owners like Paul J. & Mary J. Eklund.

Cass County, Minnesota, for Taxes for the Year 1963.

Handwritten notes: Paul J. & Mary J. Eklund, Wayne, Minn., Box 183.

Table with columns: VALUATIONS BY SCHOOL DISTRICTS AS EQUALIZED BY DEPARTMENT OF TAXATION, TAX INCLUDING STATE HOMESTEAD, SPECIAL TAXES, TOTAL TAXES, PAID, WHEN PAID, Number of Receipt, March Settlement, June Settlement, Penalty, November Settlement, Collections to First Monday in January 1965, Delinquent on First Monday in January 1965, Total Delinquent Tax and Penalty, REMARKS. Includes handwritten tax amounts and payment dates.

(cont. Next page)

Vertical text on the right edge of the page: MILLER'S FORM, WOODLAND, DES MOINES, HERRING, BY BEACH, EL SUENO, MILLER, BALAND'S LAKESHORE ON MAINY LAKE

Assessment Roll and Tax List of Real Property in the Town of Powers, Minnesota

Form 50 MILLER-DAVIS CO., MINNEAPOLIS

* Indicate Type of Property: R-Residential, C-Commercial, I-Industrial, U-Utility, F-Farm, L-Lakeshore, T-Timber, M-Mineral

Table with columns: IN WHOSE NAME ASSESSED, DESCRIPTION OF PROPERTY, TRUE AND FULL VALUATIONS, ASSESSED VALUATIONS, and FINAL EQUALIZED VALUE.

Cass County, Minnesota, for Taxes for the Year 1963.

Table with columns: VALUATIONS BY SCHOOL DISTRICTS AS EQUALIZED BY DEPARTMENT OF TAXATION, TAXES, PAID, WHEN PAID, and REMARKS.

MILLER'S POINT, WOODLAND BEACH, DES MOINES, FORESHORE, FOX BEACH, EL SIERRA, WILDPIECE, BALDWIN'S LAKESHORE ON RAINY LAKE

Assessment Roll and Tax List of Real Property in the Town of Powers

* Indicate Type of Property: R-Residential, C-Commercial, I-Industrial, U-Utility, F-Farm, L-Lakeshore, T-Timber, M-Mineral

Form 50 MILLER-DAVIS CO., MINNEAPOLIS

Table with columns: IN WHOSE NAME ASSESSED, SUBDIVISION, Sec. or Lot, Town or Block, Rng., Number of Acres of Land, No. School District, Ind. or Agri. or State, Ind. or Agri. or State, Ind. or Agri. or State, TRUE AND FULL VALUATIONS (LAND, BUILDINGS, MACHINERY, TOTAL), ASSESSED VALUATIONS (RURAL, ALL OTHER, MACHINERY, Seasonal and Recreational, TOTAL ASSESSED VALUE), FINAL EQUALIZED VALUE.

Cass County, Minnesota, for Taxes for the Year 1963.

Table with columns: SOLD FOR TAXES, VALUATIONS BY SCHOOL DISTRICTS AS EQUALIZED BY DEPARTMENT OF TAXATION (District No., Rate, Mills), Tax Including State Homestead, State Tax on Non-Homestead, SPECIAL TAXES, TOTAL TAXES, PAID, WHEN PAID, Number of Receipt, March Settlement 1964, June Settlement 1964, November Settlement 1964, Penalty, Collections to First Monday in January 1965, Delinquent on First Monday in January 1965, Total Delinquent Tax and Penalty, REMARKS.

Vertical text on the right edge of the page: MILLER'S POINT, MOONLAND, HATCH, DES MOINES, HORSESHOE, FOX BEACH, EL SIERRA, HILGREN, BALDWIN'S LAKE-SHORE OR RAINY LAKE

Assessment Roll and Tax List of Real Property in the Town of Powers

* Indicate Type of Property: R-Residential, C-Commercial, I-Industrial, U-Utility, F-Farm, L-Lakeshore, T-Timber, M-Mineral

Table with columns: IN WHOSE NAME ASSESSED, DESCRIPTION OF PROPERTY, TRUE AND FULL VALUATIONS, ASSESSED VALUATIONS, and FINAL EQUALIZED VALUE. Includes handwritten entries for various property owners like 'Fall Corn Area Council, Inc.' and 'State of Minnesota'.

Cass County, Minnesota, for Taxes for the Year 1963.

Table with columns: VALUATIONS BY SCHOOL DISTRICTS AS EQUALIZED BY DEPARTMENT OF TAXATION, TAX INCLUDING STATE HOMESTEAD, SPECIAL TAXES, TOTAL TAXES, PAID, WHEN PAID, Number of Receipt, March Settlement 1964, June Settlement 1964, November Settlement 1964, Collections to First Monday in January 1965, Delinquent on First Monday in January 1965, Total Delinquent Tax and Penalty, REMARKS. Includes handwritten tax payment details and dates.

Assessment Roll and Tax List of Real Property in the Town of Powers

Form 50 - MILLER-DAVIS CO., MINNEAPOLIS

* Indicate Type of Property: R-Residential, C-Commercial, I-Industrial, U-Utility, F-Farm, L-Lakeshore, T-Timber, M-Mineral

Table with columns: IN WHOSE NAME ASSESSED, DESCRIPTION OF PROPERTY, TRUE AND FULL VALUATIONS, ASSESSED VALUATIONS, FINAL EQUALIZED VALUE. Includes entries for Blanche Zaffke, Lewis H. Jr. & Lucille Arine Jew, Charles B. & Ruth K. Davis, Jean & Jack Mc Dowell, Jr., and others.

Cass County, Minnesota, for Taxes for the Year 1963.

Table with columns: SOLD FOR TAXES, VALUATIONS BY SCHOOL DISTRICTS AS EQUALIZED BY DEPARTMENT OF TAXATION, Tax Including State Homestead, State Tax on Non-Homestead, SPECIAL TAXES, TOTAL TAXES, PAID, WHEN PAID, Number of Receipt, March Settlement, June Settlement, November Settlement, Penalty, Collections to First Monday in January 1965, Delinquent on First Monday in January 1965, Total Delinquent Tax and Penalty, REMARKS. Includes entries for Blanche Zaffke, Lewis H. Jr. & Lucille Arine Jew, Charles B. & Ruth K. Davis, Jean & Jack Mc Dowell, Jr., and others.

Assessment Roll and Tax List of Real Property in the Town of Powers

Form 50 MILLER-DAVIS CO., MINNEAPOLIS

Indicate Type of Property: R-Residential, C-Commercial, I-Industrial, U-Utility, F-Farm, L-Lakeshore, T-Timber, M-Mineral

Table with columns: IN WHOSE NAME ASSESSED, DESCRIPTION OF PROPERTY, TRUE AND FULL VALUATIONS (RURAL, ALL OTHER, MACHINERY, Seasonal and Recreational Cabins), Total Assessed Value, Final Equalized Value.

(Cont. next Page)

Cass County, Minnesota, for Taxes for the Year 1963.

Table with columns: VALUATIONS BY SCHOOL DISTRICTS AS EQUALIZED BY DEPARTMENT OF TAXATION, Tax Including State Homestead, SPECIAL TAXES, TOTAL TAXES, PAID, WHEN PAID, Number of Receipt, March Settlement, June Settlement, November Settlement, Penalty, Collections to First Monday in January 1965, Delinquent on First Monday in January 1965, Total Delinquent Tax and Penalty, REMARKS.

Vertical text on the right edge of the page: MILLER'S POINT, WOODLAND, BEACH, DRS. MOJINS, HORSESHOE, BY A-24, EL SUENO, BEACH, WILDERE, BALAND'S LAKESHORE ON RAINY LAKE.

Assessment Roll and Tax List of Real Property in the Town of Powers

* Indicate Type of Property: R-Residential, C-Commercial, I-Industrial, U-Utility, F-Farm, L-Lakeshore, T-Timber, M-Mineral

Form 50 MILLER-DAVIS CO., MINNEAPOLIS

DESCRIPTION OF PROPERTY

Table with columns: IN WHOSE NAME ASSESSED, SUBDIVISION, Sec. or Lot, Town or Block, Rng., Number of Acres of Land, No. School District, Ind. Homestead, Agri. or Season Recr., Ind. or Season Recr., Type of Property, Acres 100ths

TRUE AND FULL VALUATIONS

Table with columns: LAND Exclusive of Structures and Improvements, BUILDINGS and Other Structures, MACHINERY Permanently Attached to Real Estate, TOTAL True and Full Value, RURAL (Homestead Up to \$4,000 20%, Over \$4,000 and Non-Homestead 33 1/2%, Timber Land Class 3e 20%), ALL OTHER (Homestead Up to \$4,000 25%, Over \$4,000 and Non-Homestead 40%), MACHINERY Attached to Real Estate 33 1/2%, Seasonal and Recreational Cabins 33 1/2%, TOTAL ASSESSED VALUE, Total Assessed Value as Equalized by the Board of Review, FINAL EQUALIZED VALUE

Cass County, Minnesota, for Taxes for the Year 1963.

Table with columns: VALUATIONS BY SCHOOL DISTRICTS AS EQUALIZED BY DEPARTMENT OF TAXATION (District No., Rate, Mills), Tax Including State Homestead, State Tax on Non-Homestead, SPECIAL TAXES, TOTAL TAXES, PAID, WHEN PAID, Number of Receipt, March Settlement 1964, June Settlement 1964, Penalty, November Settlement 1964, Penalty, Collections to First Monday in January 1965, Penalty, Delinquent on First Monday in January 1965, Total Delinquent Tax and Penalty, REMARKS

Main assessment table with 20 rows of property entries, including names like Orville J. & Lisette B. Callahan, Douglas W. & Lucille Mary Barrett, Verion & Conzelmas Fox, etc.

Tax payment table with 20 rows corresponding to the assessment table, showing tax amounts, payment dates, and remarks.

Vertical text on the right edge of the page: KATLIER'S POINT, WOODLAND, BEACH, DES MOTNES, HORSeshORe, CY BUCK, EL SUPREMO, BEACH, WILMERE, BALDWIN'S LAKESHORE OR RAINY LAKE

Assessment Roll and Tax List of Real Property in the Town of Powers

Form 50 - MILLER-DAVIS CO., MINNEAPOLIS

* Indicate Type of Property: R-Residential, C-Commercial, I-Industrial, U-Utility, F-Farm, L-Lakeshore, T-Timber, M-Mineral

Table with columns: IN WHOSE NAME ASSESSED, DESCRIPTION OF PROPERTY, TRUE AND FULL VALUATIONS (RURAL, ALL OTHER, MACHINERY, etc.), and FINAL EQUALIZED VALUE.

(Cont. Next Page)

Cass County, Minnesota, for Taxes for the Year 1963.

Table with columns: VALUATIONS BY SCHOOL DISTRICTS AS EQUALIZED BY DEPARTMENT OF TAXATION, TAX INCLUDING STATE HOMESTEAD, SPECIAL TAXES, TOTAL TAXES, PAID, WHEN PAID, Number of Receipt, March Settlement 1964, June Settlement 1964, November Settlement 1964, Delinquent on First Monday in January 1965, Total Delinquent Tax and Penalty, REMARKS.

Vertical text on the right edge of the page: MILLER'S POINT, WOODLAND, BIRCH, DEER MOTORS, HORSESHOE, FOX LAKE, EL SUPRO, BEACH, HILLSIDE, BALDWIN'S LAKESHORE OR RAINY LAKE

Assessment Roll and Tax List of Real Property in the Town of Powers

Form 50 - MILLER-DAVE CO., MINNEAPOLIS

* Indicate Type of Property: R-Residential, C-Commercial, I-Industrial, U-Utility, F-Farm, L-Lakeshore, T-Timber, M-Mineral

Table with columns: IN WHOSE NAME ASSESSED, DESCRIPTION OF PROPERTY, TRUE AND FULL VALUATIONS (RURAL, ALL OTHER), ASSESSED VALUATIONS, and FINAL EQUALIZED VALUE.

Cass County, Minnesota, for Taxes for the Year 1963.

Table with columns: VALUATIONS BY SCHOOL DISTRICTS AS EQUALIZED BY DEPARTMENT OF TAXATION, TAX INCLUDING STATE HOMESTEAD, SPECIAL TAXES, TOTAL TAXES, PAID, WHEN PAID, Number of Receipt, March Settlement 1964, June Settlement 1964, Penalty, November Settlement 1964, Penalty, Collections to First Monday in January 1965, Delinquent on First Monday in January 1965, Total Delinquent Tax and Penalty, REMARKS.

(Cont. on next page)

Vertical text on the right edge of the page: MILLER'S POINT, WOODLAND RANCH, DES MOINES, HORSeshoe, BY ASSET, EL SUZNO, WILDPIRE, HALLAND'S LAKESHORE ON RAINY LAKE

Assessment Roll and Tax List of Real Property in the Town of Powers

Indicate Type of Property: R-Residential, C-Commercial, I-Industrial, U-Utility, F-Farm, L-Lakeshore, T-Timber, M-Mineral

Form 50 - MILLER-DAVIS CO., MINNEAPOLIS

Table with columns: IN WHOSE NAME ASSESSED, DESCRIPTION OF PROPERTY, TRUE AND FULL VALUATIONS, ASSESSED VALUATIONS (RURAL, ALL OTHER), TOTAL ASSESSED VALUE, Total Assessed Value as Equalized by the Board of Review, FINAL EQUALIZED VALUE.

Cass County, Minnesota, for Taxes for the Year 1963.

Table with columns: VALUATIONS BY SCHOOL DISTRICTS AS EQUALIZED BY DEPARTMENT OF TAXATION, Tax Including State Homestead, State Tax on Non-Homestead, SPECIAL TAXES, TOTAL TAXES, PAID, WHEN PAID, Number of Receipt, March Settlement 1964, June Settlement 1964, Penalty, November Settlement 1964, Penalty, Collections to First Monday in January 1965, Penalty, Delinquent on First Monday in January 1965, Total Delinquent Tax and Penalty, REMARKS.

Assessment Roll and Tax List of Real Property in the Town of Powers

* Indicate Type of Property: R-Residential, C-Commercial, I-Industrial, U-Utility, F-Farm, L-Lakeshore, T-Timber, M-Mineral

Form 50 MILLER-DAVIS CO., MINNEAPOLIS

Table with columns: IN WHOSE NAME ASSESSED, DESCRIPTION OF PROPERTY, TRUE AND FULL VALUATIONS (LAND, BUILDINGS, MACHINERY, TOTAL), ASSESSED VALUATIONS (RURAL, ALL OTHER), and FINAL EQUALIZED VALUE.

(Cont. Next Page)

239 30

Cass County, Minnesota, for Taxes for the Year 1963.

Table with columns: VALUATIONS BY SCHOOL DISTRICTS AS EQUALIZED BY DEPARTMENT OF TAXATION, Tax Including State Homestead, SPECIAL TAXES, TOTAL TAXES, PAID, WHEN PAID, Number of Receipt, March Settlement, June Settlement, November Settlement, Collections to First Monday in January 1965, Delinquent on First Monday in January 1965, Total Delinquent Tax and Penalty, REMARKS.

376

H 292: 292 1140 9672 = 376 70 8240 -668 17412

18248

12286

5962 cancelled

Assessment Roll and Tax List of Real Property in the Town of Powers

Form 5C MILLER-DAVIS CO., MINNEAPOLIS

* Indicate Type of Property: R-Residential, C-Commercial, I-Industrial, U-Utility, F-Farm, L-Lakeshore, T-Timber, M-Mineral

Table with columns: IN WHOSE NAME ASSESSED, DESCRIPTION OF PROPERTY, TRUE AND FULL VALUATIONS (RURAL, ALL OTHER), ASSESSED VALUATIONS (Homestead, Over \$4,000, Timber Land, etc.), TOTAL ASSESSED VALUE, Total Assessed Value as Equalized by the Board of Review, FINAL EQUALIZED VALUE.

Summary row for the assessment roll with totals for various categories.

Cass County, Minnesota, for Taxes for the Year 1963.

Table with columns: SOLD FOR TAXES, VALUATIONS BY SCHOOL DISTRICTS AS EQUALIZED BY DEPARTMENT OF TAXATION, Tax Including State Homestead, State Tax on Non-Homestead, SPECIAL TAXES, TOTAL TAXES, PAID, WHEN PAID, Number of Receipt, March Settlement, June Settlement, November Settlement, Collections to First Monday in January 1965, Delinquent on First Monday in January 1965, Total Delinquent Tax and Penalty, REMARKS.

Vertical text on the right edge of the page: MILLER'S POINT, WOODLAND RANCH, DES MOINES, HORSeshOE, BY ASCH, EL SUENO, WILDGORE, HALLAND'S LAKESHORE ON RAINY LAKE

Assessment Roll and Tax List of Real Property in the Town of Powers

Form 50 - MILLER-DAVIS CO., MINNEAPOLIS

* Indicate Type of Property: R-Residential, C-Commercial, I-Industrial, U-Utility, F-Farm, L-Lakeshore, T-Timber, M-Mineral

Table with columns: IN WHOSE NAME ASSESSED, SUBDIVISION, Sec. or Lot, Town or Block, Rng., Number of Acres of Land, No. School District, Indicate Home-Stead, Indicate Agri. Rec., Indicate Type of Property, TRUE AND FULL VALUATIONS (LAND, BUILDINGS, MACHINERY, TOTAL), ASSESSED VALUATIONS (RURAL, ALL OTHER, MACHINERY, Seasonal and Recreational Cabins, TOTAL ASSESSED VALUE), Total Assessed Value as Equalized by the Board of Review, FINAL EQUALIZED VALUE.

(Cont. Next Page)

Cass County, Minnesota, for Taxes for the Year 1963.

Table with columns: SOLD FOR TAXES, VALUATIONS BY SCHOOL DISTRICTS AS EQUALIZED BY DEPARTMENT OF TAXATION (District No., Rate, Mills), Tax Including State Homestead, State Tax on Non-Homestead, SPECIAL TAXES, TOTAL TAXES, PAID, WHEN PAID, Number of Receipt, March Settlement, June Settlement, Penalty, November Settlement, Collections to First Monday in January 1965, Delinquent on First Monday in January 1965, Total Delinquent Tax and Penalty, REMARKS.

Vertical text on the right edge of the page: MILLER'S POINT, WOODLAND, DES MOINES, HORSESHOE, BY BEACH, EL SUENO, MILLERS, BALDWIN'S LAKESHORE ON RAINY LAKE

Assessment Roll and Tax List of Real Property in the Town of Powers

* Indicate Type of Property: R-Residential, C-Commercial, I-Industrial, U-Utility, F-Farm, L-Lakeshore, T-Timber, M-Mineral

Form 5C MILLER-DAVIS CO., MINNEAPOLIS

Table with columns: IN WHOSE NAME ASSESSED, DESCRIPTION OF PROPERTY, TRUE AND FULL VALUATIONS, ASSESSED VALUATIONS, and FINAL EQUALIZED VALUE.

Cass County, Minnesota, for Taxes for the Year 1963.

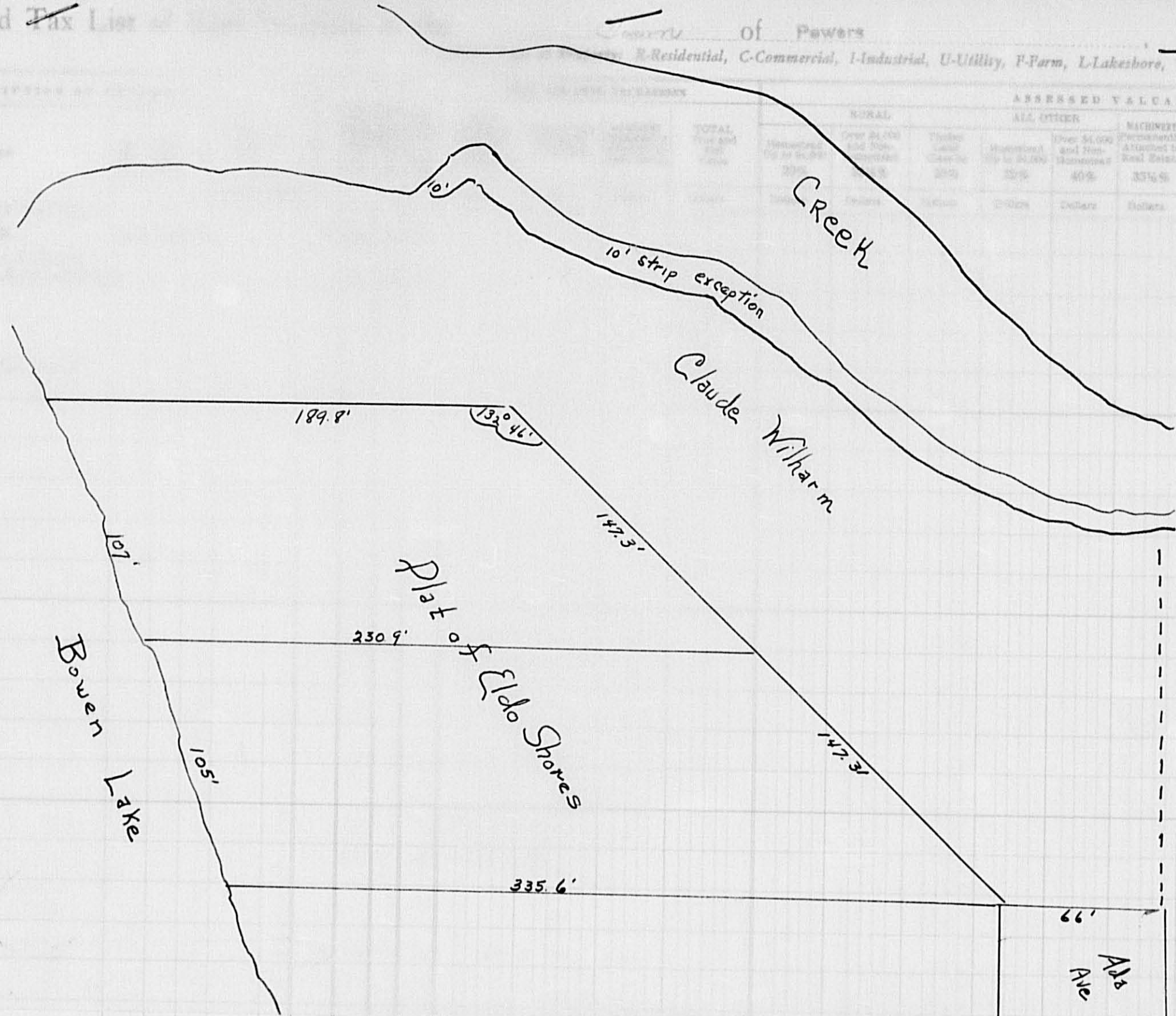
Table with columns: VALUATIONS BY SCHOOL DISTRICTS AS EQUALIZED BY DEPARTMENT OF TAXATION, TAX INCLUDING STATE HOMESTEAD, SPECIAL TAXES, TOTAL TAXES, PAID, WHEN PAID, Number of Receipt, March Settlement 1964, June Settlement 1964, November Settlement 1964, Collections to First Monday in January 1965, Delinquent on First Monday in January 1965, Total Delinquent Tax and Penalty, REMARKS.

Vertical text on the right edge of the page: MILLER'S POINT, WOODLAND, DES MOINES, HORSESHOE, FOX BAY, EL SIENDO, BILDERBERG, BALDWIN'S LAKESHORE ON RAINY LAKE.

Assessment Roll and Tax List

Form 5C - MILLER-DAVIS CO., MINNEAPOLIS

IN WHOSE NAME ASSESSED	DESCR	SUBDIVIS	ASSESSED VALUATION		FINAL EQUALIZED VALUE
			TOTAL ASSESSED VALUE	Total Assessed Value as Equalized by the Board of Review	
Gerald + Bernadine Eueland	N. 158' of W. 130' of 550' of NW 1/4 of NW 1/4	1			
Claude + Mabel Wilham	Part of GOV'T LOT Bowen Creek 1st	2			
		3			
		4			
Powers Township	N. 183' of E. 33' of NW 1/4 of NW 1/4	5			
		6			
		7			
		8			
		9			
		10			
		11			
		12			
		13			
		14			
		15			
		16			
		17			
		18			
		19			
		20			



Cass County, Minnesota, for Taxes for the Year 1963.

SOLD FOR TAXES	VALUATIONS BY SCHOOL DISTRICTS AS EQUALIZED BY DEPARTMENT OF TAXATION						Tax Including State Homestead	State Tax on Non-Homestead	SPECIAL TAXES	SPECIAL TAXES	TOTAL TAXES	PAID	WHEN PAID	Number of Receipt	March Settlement 1964	June Settlement 1964	Penalty	November Settlement 1964	Penalty	Collections to First Monday in January 1965	Penalty	Delinquent on First Monday in January 1965	Total Delinquent Tax and Penalty	REMARKS
	District No.	District No.	District No.	District No.	District No.	District No.																		
1																								
2																								
3																								
4																								
5																								
6																								
7																								
8																								
9																								
10																								
11																								
12																								
13																								
14																								
15																								
16																								
17																								
18																								
19																								
20																								

MILLER'S POINT
 WOODLAND BRANCH
 DES MOINES
 HORSESHOE
 POTTSVILLE
 EL SURBO
 BRANCH
 WINDOMERE
 HALLAND'S LAKE SHORE ON RAINY LAKE

Assessment Roll and Tax List of Real Property in the Town of Powers

* Indicate Type of Property: R-Residential, C-Commercial, I-Industrial, U-Utility, F-Farm, L-Lakeshore, T-Timber, M-Mineral

Form 5C - MILLER-DAVIS CO., MINNEAPOLIS

Table with columns: IN WHOSE NAME ASSESSED, DESCRIPTION OF PROPERTY, TRUE AND FULL VALUATIONS, ASSESSED VALUATIONS, and FINAL EQUALIZED VALUE. Includes entries for Eugene Walter & Donna L. Wrae, Wm. & Maribel De Jung, Kermit C. & Marion A. Lein, Wm. & Maribel De Jung, and others.

Cass County, Minnesota, for Taxes for the Year 1963.

Table with columns: VALUATIONS BY SCHOOL DISTRICTS AS EQUALIZED BY DEPARTMENT OF TAXATION, Tax Including State Homestead, SPECIAL TAXES, TOTAL TAXES, PAID, WHEN PAID, Number of Receipt, March Settlement, June Settlement, November Settlement, Collections to First Monday in January 1965, Delinquent on First Monday in January 1965, Total Delinquent Tax and Penalty, and REMARKS. Includes entries for various districts and payment dates.

Vertical text on the right edge of the page: KILBURN'S POINT, WOODLAND RANCH, DEE LAKES, HORSeshOE, BOY BROTHERS, EL SURBO, HAYSHIRE, BALDWIN'S LAKESHORE ON RAINY LAKE

Assessment Roll and Tax List of Real Property in the Town of Powers

* Indicate Type of Property: R-Residential, C-Commercial, I-Industrial, U-Utility, F-Farm, L-Lakeshore, T-Timber, M-Mineral

Form 5C MILLER-DAVIS CO., MINNEAPOLIS

Table with columns: IN WHOSE NAME ASSESSED, DESCRIPTION OF PROPERTY, TRUE AND FULL VALUATIONS, ASSESSED VALUATIONS, and FINAL EQUALIZED VALUE. Includes entries for Lyle & Jessie Coffland, Robert W. & Clara B. Kunde, Alfred J. & Carroll D. Parker, etc.

461.25

Cass County, Minnesota, for Taxes for the Year 1963.

Table with columns: SOLD FOR TAXES, VALUATIONS BY SCHOOL DISTRICTS AS EQUALIZED BY DEPARTMENT OF TAXATION, Tax Including State Homestead, SPECIAL TAXES, TOTAL TAXES, PAID, WHEN PAID, Number of Receipt, March Settlement, June Settlement, November Settlement, Collections to First Monday in January, Delinquent on First Monday in January, Total Delinquent Tax and Penalty, REMARKS. Includes entries for 1 SOLD FOR TAXES, 2, 3, 4, 5, 6, 7, 8, 9, 10, 11, 12, 13, 14, 15, 16, 17, 18, 19, 20.

Cancel # 3060

3060 cancelled

Assessment Roll and Tax List of Real Property in the Town of Powers

* Indicate Type of Property: R-Residential, C-Commercial, I-Industrial, U-Utility, F-Farm, L-Lakeshore, T-Timber, M-Mineral

Form 50 MILLER-DAVIS CO., MINNEAPOLIS

IN WHOSE NAME ASSESSED	DESCRIPTION OF PROPERTY				No. School District	Indicate Homestead Yes or No	Agri. or Rec. Yes or No	Indicate Type of Property	TRUE AND FULL VALUATIONS								TOTAL ASSESSED VALUE	Total Assessed Value as Equalized by the Board of Review	FINAL EQUALIZED VALUE					
	SUBDIVISION	Sec. or Lot	Town or Block	Rng.					Number of Acres of Land	LAND Exclusive of Structures and Improvements	BUILDINGS and Other Structures	MACHINERY Permanently Attached to Real Estate	TOTAL True and Full Value	RURAL						MACHINERY Permanently Attached to Real Estate	Seasonal and Recreational Cabins			
														Acres 100ths	Homestead Up to \$4,000 20%	Over \$4,000 and Non-Homestead 33 1/3%						Timber Land Class 3e 20%	Homestead Up to \$4,000 25%	Over \$4,000 and Non-Homestead 40%
Helen Snodgrass Lora Weber, Marjorie Chalick, Marjorie Gleason, Wm. H. & Emma V. Godner, Vera Ford, Betty Tuttle, Lucy Pelant, Richard Godner, Shirley Godner, Wilma Beaver, Janet Arant, each 1/2 int.	1	S. 40 ac. of	GOVT LOT 8	35 139 30	40	114	no	yes	T															
	2		GOVT LOT 7		55 35		yes	yes	T															
Wm. H. & Emma V. Godner	4	N. 17.25 ac. of	GOVT LOT 8		17 25		yes	no	R															
State of Minnesota	6		GOVT LOT 1																					
Lyle & Jessie Coffland	7		GOVT LOT 2		39 35		no	yes	T															
Robert C. Hillyer	8		GOVT LOT 3				no	yes	F															
Lida E. Miller	9		GOVT LOT 6		15 05		no	yes	T															
State of Minnesota	11		GOVT LOT 5																					
Robert C. Hillyer	12		GOVT LOT 4				no	yes	T															
" "	13		S.W. 1/4 of S.W. 1/4				no	yes	T															
Leo & Marge Anibal	16		N.E. 1/4 of S.E. 1/4		40		no	yes	R															
State of Minnesota	17		N.W. 1/4 of S.E. 1/4																					
State of Minnesota	18		S.W. 1/4 of S.E. 1/4																					
Virgil J. & Grace Alexander	19		S.E. 1/4 of S.E. 1/4		40		no	yes	F															
	20																							

247

Cass County, Minnesota, for Taxes for the Year 1963.

SOLD FOR TAXES	VALUATIONS BY SCHOOL DISTRICTS AS EQUALIZED BY DEPARTMENT OF TAXATION						Tax Including State Homestead	State Tax on Non-Homestead	SPECIAL TAXES	SPECIAL TAXES	TOTAL TAXES	PAID	WHEN PAID	Number of Receipt	March Settlement 1964	June Settlement 1964	Penalty	November Settlement 1964	Penalty	Collections to First Monday in January 1965	Penalty	Delinquent on First Monday in January 1965	Total Delinquent Tax and Penalty	REMARKS		
	District No.	District No.	District No.	District No.	District No.	District No.																				
	Rate	Rate	Rate	Rate	Rate	Rate																				
	Mills	Mills	Mills	Mills	Mills	Mills																				
1						17.74	21			18.36	1	2nd HALF PAID OCT 30 1964	2638										2029	23915		
2						24.94				24.94	2	1st HALF PAID MAY 14 1964	11092		9.18								2494	2743	20130	
3											3															
4						40.08				40.08	4												4008	4409	20130	
5											5															
6											6															
7	SOLD FOR TAXES					25.46	88			26.34	7	FORFEITED 10/14/64													Cancel 26.34 20157	
8						10.54	36			10.90	8	PAID IN FULL JUL 14 1964	17048				10.90								21232	
9	SOLD FOR TAXES					14.14	50			14.64	9														1464	
10											10															
11											11															
12						11.84	42			12.26	12	PAID IN FULL JUL 14 1964														1226
13						13.38	46			13.84	13	PAID IN FULL JUL 14 1964														1384
14											14															
15											15															
16						43.20	150			44.70	16	PAID IN FULL MAY 29 1964	16706			44.70										21235
17											17															
18											18															
19	SOLD FOR TAXES					31.38	108			32.46	19															3246
20											20															
						192.02	582			238.52																
						40.08																				
						232.70																				

MILLER'S POINT
WOODLAND
GRACE
DES MOINES
HORSeshOE
ST. AGNE
EL SIEN
WINDSOR
BALDWIN'S LAKESHORE ON
RIMBY LAKE

Assessment Roll and Tax List of Real Property in the _____ of _____,
 * Indicate Type of Property: R-Residential, C-Commercial, I-Industrial, U-Utility, F-Farm, L-Lakeshore, T-Timber, M-Mineral

Form 50 MILLER-DAVIS CO., MINNEAPOLIS

IN WHOSE NAME ASSESSED	DESCRIPTION OF PROPERTY				No. School District	Indicate Homestead Yes or No	Agricultural Recr. Yes or No	Indicate Type of Property	TRUE AND FULL VALUATIONS													FINAL EQUALIZED VALUE							
	SUBDIVISION	Sec. or Lot	Town or Block	Rng.					Number of Acres of Land		LAND EXCLUSIVE OF STRUCTURES AND IMPROVEMENTS				BUILDINGS AND OTHER STRUCTURES				MACHINERY PERMANENTLY ATTACHED TO REAL ESTATE		TOTAL TRUE AND FULL VALUE								
									Acres	100ths	LAND	BUILDINGS	MACHINERY	TOTAL	Homestead	Over \$4,000	Timber	Homestead	Over \$4,000	Seasonal and Recreational	TOTAL ASSESSED VALUE		Total Assessed Value as Equalized by the Board of Review						
									Dollars	Dollars	Dollars	Dollars	Dollars	Dollars	Dollars	Dollars	Dollars	Dollars	Dollars	Dollars	Dollars	Dollars	Dollars	Dollars	Dollars	Dollars	Dollars		
1																													
2																													
3																													
4																													
5																													
6																													
7																													
8																													
9																													
10																													
11																													
12																													
13																													
14																													
15																													
16																													
17																													
18																													
19																													
20																													

Cass County, Minnesota, for Taxes for the Year 1963.

SOLD FOR TAXES	VALUATIONS BY SCHOOL DISTRICTS AS EQUALIZED BY DEPARTMENT OF TAXATION						Tax Including State Homestead	State Tax on Non-Homestead	SPECIAL TAXES	SPECIAL TAXES	TOTAL TAXES	PAID	WHEN PAID	Number of Receipt	March Settlement 1964	June Settlement 1964	November Settlement 1964	Penalty	Collections to First Monday in January 1965	Penalty	Delinquent on First Monday in January 1965	Total Delinquent Tax and Penalty	REMARKS						
	District No.	District No.	District No.	District No.	District No.	District No.																							
	Rate	Rate	Rate	Rate	Rate	Rate																							
	Dollars	Dollars	Dollars	Dollars	Dollars	Dollars	\$ cts.	\$ cts.	\$ cts.	\$ cts.	\$ cts.	Month Day Year		\$ cts.	\$ cts.	\$ cts.	\$ cts.	\$ cts.	\$ cts.	\$ cts.	\$ cts.	\$ cts.							
1																													
2																													
3																													
4																													
5																													
6																													
7																													
8																													
9																													
10																													
11																													
12																													
13																													
14																													
15																													
16																													
17																													
18																													
19																													
20																													

MILLER'S POINT
WOODLAND
DES MOINES
HORSHORE
BY BEACH
EL SIERRA
WILMINGTON
BEACH
BEALAND'S LAKESHORE ON RAINY LAKE

Assessment Roll and Tax List of Real Property in the Town of Powers

* Indicate Type of Property: R-Residential, C-Commercial, I-Industrial, U-Utility, F-Farm, L-Lakeshore, T-Timber, M-Mineral

Form 50 MILLER-DAVIS CO., MINNEAPOLIS

DESCRIPTION OF PROPERTY

Woodland

IN WHOSE NAME ASSESSED

No.	Subdivision	Sec. or Lot	Town or Block	Rng.	Number of Acres of Land	No. School District	Indicate Homestead Yes or No	Agricultural Recr. Yes or No	Indicate Type of Property	TRUE AND FULL VALUATIONS				ASSESSED VALUATIONS							Total Assessed Value as Equalized by the Board of Review	FINAL EQUALIZED VALUE	
										LAND Exclusive of Structures and Improvements	BUILDINGS and Other Structures	MACHINERY Permanently Attached to Real Estate	TOTAL True and Full Value	RURAL		ALL OTHER			MACHINERY Permanently Attached to Real Estate	Seasonal and Recreational Cabins			TOTAL ASSESSED VALUE
														Homestead Up to \$4,000 20%	Over \$4,000 and Non-Homestead 33 1/3%	Timber Land Class 3e 20%	Homestead Up to \$4,000 25%	Over \$4,000 and Non-Homestead 40%					
1	LOTS SEC. 27-139-30									Dollars	Dollars	Dollars	Dollars	Dollars	Dollars	Dollars	Dollars	Dollars	Dollars	Dollars	Dollars	Dollars	Dollars
2																							
3																							
4																							
5																							
6																							
7																							
8																							
9																							
10																							
11																							
12																							
13																							
14																							
15																							
16																							
17																							
18																							
19																							
20																							

Cass County, Minnesota, for Taxes for the Year 1963.

SOLD FOR TAXES	VALUATIONS BY SCHOOL DISTRICTS AS EQUALIZED BY DEPARTMENT OF TAXATION						Tax Including State Homestead	State Tax on Non-Homestead	SPECIAL TAXES	SPECIAL TAXES	TOTAL TAXES	PAID	WHEN PAID	Number of Receipt	March Settlement 1964	June Settlement 1964	Penalty	November Settlement 1964	Penalty	Collections to First Monday in January 1965	Penalty	Delinquent on First Monday in January 1965	Total Delinquent Tax and Penalty	REMARKS
	District No.	District No.	District No.	District No.	District No.	District No.																		
	Rate	Rate	Rate	Rate	Rate	Rate																		
1																								
2																								
3																								
4																								
5																								
6																								
7																								
8																								
9																								
10																								
11																								
12																								
13																								
14																								
15																								
16																								
17																								
18																								
19																								
20																								

WOODLAND MILLER'S POINT

WOODLAND MILLER'S POINT

Assessment Roll and Tax List of Real Property in the Town of Powers

Form 5C MILLER-DAVIS CO., MINNEAPOLIS

* Indicate Type of Property: R-Residential, C-Commercial, I-Industrial, U-Utility, F-Farm, L-Lakeshore, T-Timber, M-Mineral

Table with columns: IN WHOSE NAME ASSESSED, DESCRIPTION OF PROPERTY, TRUE AND FULL VALUATIONS, ASSESSED VALUATIONS (RURAL, ALL OTHER, MACHINERY, Seasonal and Recreational Cabins), TOTAL ASSESSED VALUE, Total Assessed Value as Equalized by the Board of Review, FINAL EQUALIZED VALUE.

Cass County, Minnesota, for Taxes for the Year 1963.

Table with columns: VALUATIONS BY SCHOOL DISTRICTS AS EQUALIZED BY DEPARTMENT OF TAXATION, Tax Including State Homestead, State Tax on Non-Homestead, SPECIAL TAXES, TOTAL TAXES, PAID, WHEN PAID, Number of Receipt, March Settlement, June Settlement, November Settlement, Collections to First Monday in January 1965, Delinquent on First Monday in January 1965, Total Delinquent Tax and Penalty, REMARKS.

WOODLAND MILLER'S POINT, DES MOINES BEACH, HOESHOOR BLACH, HOESHOOR, ROY BACH, EL SIEMO, WINDYBREE, BALDWIN'S LAKESHORE ON PALMY LANE

WOODLAND MILLER'S POINT, DES MOINES BEACH, HOESHOOR BLACH, HOESHOOR, ROY BACH, EL SIEMO, WINDYBREE, BALDWIN'S LAKESHORE ON PALMY LANE

Assessment Roll and Tax List of Real Property in the Town of Powers

Form 50 - MILLER-DAVIS CO., MINNEAPOLIS

* Indicate Type of Property: R-Residential, C-Commercial, I-Industrial, U-Utility, F-Farm, L-Lakeshore, T-Timber, M-Mineral

Table with columns: IN WHOSE NAME ASSESSED, DESCRIPTION OF PROPERTY, TRUE AND FULL VALUATIONS, ASSESSED VALUATIONS, and FINAL EQUALIZED VALUE. Includes entries for Paul J. & Mary J. Ecklund, Paul J. Ecklund & Walter Marohn, John P. & Magdalena Steffens, and H. M. Shemmin.

Cass County, Minnesota, for Taxes for the Year 1963.

Table with columns: SOLD FOR TAXES, VALUATIONS BY SCHOOL DISTRICTS AS EQUALIZED BY DEPARTMENT OF TAXATION, Tax Including State Homestead, State Tax on Non-Homestead, SPECIAL TAXES, TOTAL TAXES, PAID, WHEN PAID, Number of Receipt, March Settlement, June Settlement, Penalty, November Settlement, Collections to First Monday in January 1965, Delinquent on First Monday in January 1965, Total Delinquent Tax and Penalty, and REMARKS.

Handwritten summary totals at the bottom of the tax table, including values like 264, 492, 492, 2nd, 6758, 799, 1063, 1st, 35630, 950, 43338, 940, 951, 9505, and 39382.

Assessment Roll and Tax List of Real Property in the Town of Powers

Form 50 MILLER-DAVIS CO., MINNEAPOLIS

* Indicate Type of Property: R-Residential, C-Commercial, I-Industrial, U-Utility, F-Farm, L-Lakeshore, T-Timber, M-Mineral

Table with columns: IN WHOSE NAME ASSESSED, DESCRIPTION OF PROPERTY, TRUE AND FULL VALUATIONS, ASSESSED VALUATIONS, and FINAL EQUALIZED VALUE. Includes entries for William J. Curney, Paul S. Britz, John Cernyar, etc.

Cass County, Minnesota, for Taxes for the Year 1963.

Table with columns: SOLD FOR TAXES, VALUATIONS BY SCHOOL DISTRICTS AS EQUALIZED BY DEPARTMENT OF TAXATION, SPECIAL TAXES, TOTAL TAXES, PAID, WHEN PAID, Number of Receipt, March Settlement 1964, June Settlement 1964, Penalty, November Settlement 1964, Penalty, Collections to First Monday in January 1965, Penalty, Delinquent on First Monday in January 1965, Total Delinquent Tax and Penalty, REMARKS. Includes entries for 1-20 with tax amounts and payment dates.

Assessment Roll and Tax List of Real Property in the Town of Powers

* Indicate Type of Property: R-Residential, C-Commercial, I-Industrial, U-Utility, F-Farm, L-Lakeshore, T-Timber, M-Mineral

Form 50 MILLER-DAVIS CO., MINNEAPOLIS

Table with columns: IN WHOSE NAME ASSESSED, DESCRIPTION OF PROPERTY, TRUE AND FULL VALUATIONS, ASSESSED VALUATIONS, and FINAL EQUALIZED VALUE. Includes entries for Eldo Shore subdivision.

Cass County, Minnesota, for Taxes for the Year 1963.

Table with columns: SOLD FOR TAXES, VALUATIONS BY SCHOOL DISTRICTS AS EQUALIZED BY DEPARTMENT OF TAXATION, SPECIAL TAXES, PAID, WHEN PAID, and various settlement/penalty columns. Includes handwritten entries for tax payments.

WOODLAND MILLER'S POINT, ELDORADO SHORES, WISCONSIN BEACH, LAKESHORE BEACH, LUDY BEACH, EL SUENO, WIDENBERG BEACH, HAALAND'S LAKESHORE BAY LAKES

VINCENT'S OAKCREEK, SANDOR HEIGHTS, ECHO HILL, GILBERT'S, VINCENT'S FOUR POINT LAKES, BERT'S BIRCHWOOD

Assessment Roll and Tax List of Real Property in the Town of Powers
 * Indicate Type of Property: R-Residential, C-Commercial, I-Industrial, U-Utility, F-Farm, L-Lakeshore, T-Timber, M-Mineral

Form 50 MILLER-DAVIS CO., MINNEAPOLIS

IN WHOSE NAME ASSESSED	DESCRIPTION OF PROPERTY				No. School District	Indicate Homestead Yes or No	Agricultural Rec. or No	Indicate Type of Property	TRUE AND FULL VALUATIONS				ASSESSED VALUATIONS							Total Assessed Value as Equalized by the Board of Review	FINAL EQUALIZED VALUE			
	SUBDIVISION	Sec. or Lot	Town or Block	Rng.					Number of Acres of Land		LAND Exclusive of Structures and Improvements	BUILDINGS and Other Structures	MACHINERY Permanently Attached to Real Estate	TOTAL True and Full Value	RURAL		ALL OTHER					MACHINERY Permanently Attached to Real Estate	Seasonal and Recreational Cabins	TOTAL ASSESSED VALUE
									Acres	100ths					Homestead Up to \$4,000	Over \$4,000 and Non-Homestead	Timber Land Class 3e	Homestead Up to \$4,000	Over \$4,000 and Non-Homestead					
Carl H. & Margaret E. Wagner	Part of lots 2, Sec. 24-139-30	1				114	No	Res																
" " "	E. 3/4 of Lot 2	2				110	No	Res																
Herbert J. & Jeanette H. Wolf	W. 1/4 of Lot 2 & all of Lot 5	3				110	No	Res																
Herman & Esther J. Logan	" " "	4				110	No	Res																
" " "	E. 40' on the lake of 5	5				110	No	Res																
Elmer R. & Vina Nagel	Part of lots 5 & 6	6				110	No	Res																
Arthur A. Reuck	" " "	7				110	No	Res																
Arthur A. Reuck	6 base E. 40' on lake	8				110	No	Res																
Elmer R. & Vina Nagel	" " "	9				110	No	Res																
Arthur A. Reuck	" " "	10				110	No	Res																
Arthur A. & Rae Ellen Reuck	" " "	11				110	No	Res																
Frank P. & Margaret A. Povlock	" " "	12				110	No	Res																
" " "	" " "	13				110	No	Res																
Raymond & Gladys Rodens	" " "	14				110	No	Res																

Cass County, Minnesota, for Taxes for the Year 1963.

SOLD FOR TAXES	VALUATIONS BY SCHOOL DISTRICTS AS EQUALIZED BY DEPARTMENT OF TAXATION						Tax Including State Homestead	State Tax on Non-Homestead	SPECIAL TAXES	SPECIAL TAXES	TOTAL TAXES	PAID	WHEN PAID	Number of Receipt	March Settlement 1964	June Settlement 1964	November Settlement 1964	Collections to First Monday in January 1965	Delinquent on First Monday in January 1965	Total Delinquent Tax and Penalty	REMARKS
	District No.	District No.	District No.	District No.	District No.	District No.															
	Rate	Rate	Rate	Rate	Rate	Rate															
1	204						52.46	1.82			54.28	1 PAID IN FULL APR 20 1964			54.28						21260
2	41						10.54	36			10.90	2 PAID IN FULL APR 20 1964	6923		10.90						
3	211						54.26	1.88			56.14	3 PAID IN FULL APR 30 1964	8677		56.14						20278
4				152			42.90				42.90	4 PAID IN FULL MAY 19 1964	9992		42.90						21464
5																					
6							10.16	32			10.48	6 PAID IN FULL MAY 15 1964	11117		10.48						20139
7							11.00	34			11.34	7 PAID IN FULL MAY 29 1964			11.34						
8	204						52.46	1.82			54.28	8 PAID IN FULL MAY 29 1964	16035		54.28						21297
9							94.82	300			97.82	9 PAID IN FULL MAY 29 1964			97.82						21351
10							70.26	222			72.48	10 PAID IN FULL MAY 29 1964	16030		72.48						
11	204						52.46	1.82			54.28	11 PAID IN FULL FEB 10 1965		-54.28							20210
12	41						10.54	36			10.90	12 PAID IN FULL FEB 5 1965		-10.90							
13							93.68	296			96.64	13 PAID IN FULL APR 20 1964	6918		96.64						21465
14																					
15																					
16																					
17																					
18																					
19																					
20																					

152 = 152 1140 232.72
 992 = 189.9 522.82 16.90
 1144 = 204.9 555.54

65.18 507.26

