

Assessment & Tax List - 1959

Powers

INDEX TO SECTIONS

SECTION PAGE

Sec. 1	
" 2	
" 3	
" 4	
" 5	
" 6	
" 7	
" 8	
" 9	
" 10	
" 11	
" 12	
" 13	
" 14	
" 15	
" 16	
" 17	
" 18	
" 19	
" 20	
" 21	
" 22	
" 23	
" 24	
" 25	
" 26	
" 27	
" 28	
" 29	
" 30	
" 31	
" 32	
" 33	
" 34	
" 35	
" 36	

For Convenience of Auditor in Showing Boundaries of School Districts

Township No. 139 Range No. 30 Mer. P. M.

1	2	3	4	5	6
7	8	9	10	11	12
13	14	15	16	17	18
19	20	21	22	23	24
25	26	27	28	29	30
31	32	33	34	35	36

Handwritten notes on grid: "Hennepin School", "District #1", "School", "District #11", "#11"

Returns Showing Grain Received in or Handled by Elevators, Warehouses and Mills in the _____ of _____ in the County of _____ for the Year Ending May 1, 1959.

NAMES OF OWNERS	ADDRESS	Bushels of Wheat	Bushels of Soy Beans	Bushels of Flax	Total No. of Bushels of Wheat, Soy Beans and Flax	★ Tax of 1/4 Mill per Bushel		Bushels of Corn	Bushels of Barley	Bushels of Rye	Bushels of Oats	Bushels of Buckwheat	Bushels of all Other Grains	Total No. Bushels of Corn, Barley, Rye, Oats, Buckwheat and all Other Grains	★ Tax of 1/4 Mill Per Bushel		★ Total Tax		REMARKS
						Dollars	Cts.								Dollars	Cts.	Dollars	Cts.	

Note ★ Assessors will not fill these Columns

Millers Point
Woodland
Des Moines Beach
Horseshoe Beach
Ferry Beach
El Sueno

REAL PROPERTY BECOMING SUBJECT TO TAXATION SINCE THE LAST PREVIOUS ASSESSMENT OR OMITTED FROM ASSESSMENT ROLLS THE PREVIOUS YEARS.
 Assessment of Taxable Real Property in the _____ of _____ County of _____, Minn., for the Year 1957.

* Indicate Type of Property: R - Residential, C - Commercial, I - Industrial, U - Utility, F - Farm, L - Lakeshore, T - Timber, M - Mineral

NAME OF OWNER	School District	DESCRIPTION OF PROPERTY	SUBDIVISION	Sec. or Lot	Twp. or Block	Rng.	Number of Acres of Land		Indicate Homestead Yes or No	Indicate Agricultural Yes or No	Indicate Type of Property	BY WHOM VALUED	TRUE AND FULL VALUATIONS						FINAL EQUALIZED VALUE				
							Acres	100ths					LAND Exclusive of Structures and Improvements	BUILDINGS and Other Structures	MACHINERY Permanently Attached to Real Estate	TOTAL True and Full Value	RURAL			ALL OTHER		MACHINERY Permanently Attached to Real Estate	TOTAL ASSESSED VALUE
													Dollars	Dollars	Dollars	Dollars	Dollars	Dollars	Dollars	Dollars	Dollars	Dollars	Dollars
1																							
2																							
3																							
4																							
5																							
6																							
7																							
8																							
							Total No. of Acres _____																
							Total Value as Equalized by _____																
							Total Value as Assessed by _____																

SUMMARY OF TAX COLLECTION

Original Levy	- - - - -	\$ 19,390.80
Additions	- - - - -	\$ 30.60
		\$ 19,421.40
Abatements	- - - - -	\$ 176.84
		\$ 19,244.50

COLLECTIONS

March Settlement	- - - - -	\$ 2,828.08
June Settlement	- - - - -	\$ 10,796.92
November Settlement	- - - - -	\$ 3753.61
January Settlement	- - - - -	\$ 76.55
		\$ 17,455.16
		\$ 1789.40
Over Collected	- - - - -	\$ 33.46
Under Collected	- - - - -	\$ 1.68
Delinquent	- - - - -	\$ 1,822.84
		\$ 1,789.40
Total	- - - - -	\$ _____

Millers Point
 Woodland
 Des Moines Beach
 Horseshoe Beach
 Huron Beach
 El Sano

Assessment of

Form 355 MILLER-DAY COMPANY, MINNEAPOLIS

NAME OF OWNER

TABULAR SCHEDULE OF VALUATIONS,

LEVIED IN THE Town OF Powers

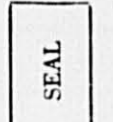
RATES AND TAXES

COUNTY OF CASS, STATE OF MINNESOTA

School District No.	VALUATION BY SCHOOL DISTRICTS				RATE OF STATE TAXES	RATE OF COUNTY TAXES										RATE OF TOWN TAXES										RATE OF SCHOOL TAXES		TAXES LEVIED									
	Agri-cultural Lands	Non-Agri-cultural Lands	Personal Property	Total Value of all Property except Money and Credits		Rev.	R. & B.	Welfare	Bonds and Int.	Total Rate of County Tax	Rev.	R. & B.	Drag Tax	State Loan	Total Rate of Town Tax	Local	Special	State Loan	Deficiency	Tuition	Transportation	Total Rate of Sch'l Tax	Total Rate of all Taxes	Local 1 Mill	Special	State Loan	Def.	E. O.	P. E. R. A.	Total School Taxes	FUNDS	Rate	Amounts				
114	22,287	25,410	a 3373 na 6073	57,143	11.	8.10	35.68	15.	61.95	5.	5.79	124.04	5.	11.6	5.	21.6	25.	38.59	26.2	4.1	93.89	252.63	641.50	990.22	672.29	105.21	2409.22	State - Non-Homestead,			264.80						
UN	3601	7025	na 1752	12,378	N. H.	6.22																															
	25,888	32,435	11,198	69,521		14.32																															
Assessed Value Homestead	Rural 20,164	All Other 872	Personal Property	Total 21,036																																	
Non-Homestead	33,663	3624	11,198	48,485																																	
Total	53,827	4496	11,198	69,521																																	
			C-2 5835 Other 5363																																		

Total Number of Acres 12,304.60
 State of Minnesota, }
 COUNTY OF CASS }
 Auditor of said County and State aforesaid, do hereby certify that the foregoing is a true and correct Schedule, showing the valuation of all the taxable property, in the Town of Powers, in said County, the several rates of Taxation and Totals of several Tax Funds levied thereon for the year A. D. 1957.
 Witness my hand and official seal, this 31st day of December, A. D. 1957.

L. C. Peterson
 County Auditor
 By Helen Belton, Deputy



Total Taxes Real Estate 16,297.12
 Pers Prop. 3,093.68
 Total 19,390.80

Miller Point
 Woodland
 Des Moines Beach
 Horseshoe Beach
 El Sueno

Assessment of

Form 315 MILLER-DAY COMPANY, MINNEAPOLIS

COLLECTIONS OF TAXES OF 1959

Town OF *Roseville*

CASS COUNTY, MINNESOTA

NAME OF OWNER	FUNDS	MARCH SETTLEMENT	JUNE SETTLEMENT	NOV. SETTLEMENT	Amount Collected from Nov. 1942 to First Monday in Jan. 1943	REDUCTIONS	Total Reductions and Collected	BALANCE UNCOLLECTED	ADDITIONS	Total Uncollected to First Monday in January, 1959
		1959	1959	1959						
	State-Non-Homestead,	3251	15324	5179	166					
	State-Homestead,	492	30822	10161	408					
	County Revenue,	36420	137492	47289	924					
	County Road and Bridge,	15310	57802	19880	388					
	County Welfare,	63234	238723	82106	1605					
	County Bond and Interest, Transp.	1143	4316	1484	29					
	R. T. B. F. P.	5104	19267	6626	129					
	P. E. R. A.	5910	22311	7674	150					
	Co. Nurse	2042	7707	2652	52					
	Town Revenue,	5104	19267	6626	129					
	Town Road and Bridge,	11840	44701	15375	301					
	Town Drng. Phone	5104								
	Town State Loan, Fire		19267	6626	129					
	R. + B. Bldg.	2042	7707	2652	52					
	Agric. Adm.	510	1927	663	13					
	School Local 1 Mill,									
	School Special,	43315	147759	47831	1272					
	School State Loan,									
	Deficiency	48367	198034	77440	1154					
	Tuition									
	Transportation									
	C. O.	25034	91564	29715	648					
	P. E. R. A.	4166	15702	5382	106					
		282808	1079692	375361	7655					

	SCHOOL DISTRICT NO.	LOCAL 1 MILL	SPECIAL	STATE LOAN	Def.	C. O.	P. E. R. A.	TOTALS
MARCH SETTLEMENT	114-a		6457		9967	6767	1059	24250
	114-na		81799		24543	16663	2607	75612
	Un-na		5059		13857	1604	500	21020
	Totals		43315		48367	25034	4166	120882
JUNE SETTLEMENT	114-a		33264		51347	34861	5455	124927
	114-na		91393		70537	47840	7494	217314
	Un-na		18402		50405	5833	1822	76462
	Un-a		4700		25745	2980	931	34356
Totals		147759		198034	91564	15702	453059	
NOVEMBER SETTLEMENT	114 a		12330		19032	12922	2022	46306
	un a		2403		13164	1524	476	17567
	un na		10015		27429	3174	991	41609
	114 na		23083		17815	12095	1893	54886
Totals		47831		77440	29715	5382	160368	
NOVEMBER to JANUARY	un na		88		240	28	09	365
	114 na		1184		914	620	97	2815
Totals		1272		1154	648	106	3180	
ADDITIONS								
Totals								
REDUCTIONS								
Totals								

Millers Point
 Woodland
 Des Moines Beach
 Horseshoe Beach
 Murray Beach
 El Sueno

Assessment Roll and Tax List of Real Property in the Town of Powers

Cass County, Minnesota, for Taxes for the Year 1959.

Indicate Type of Property: R-Residential, C-Commercial, I-Industrial, U-Utility, F-Farm, L-Lakeshore, T-Timber, M-Mineral

Table with columns: IN WHOSE NAME ASSESSED, TO WHOM TRANSFERRED, DESCRIPTION OF PROPERTY, TRUE AND FULL VALUATIONS, ASSESSED VALUATIONS, and FINAL EQUALIZED VALUE.

Table with columns: SOLD FOR TAXES, VALUATIONS BY SCHOOL DISTRICTS AS EQUALIZED BY DEPARTMENT OF TAXATION, Tax including State Homestead, SPECIAL TAXES, TOTAL TAXES, PAID, WHEN PAID, Number of Receipt, March Settlement, June Settlement, November Settlement, Collections to First Monday in January, Delinquent on First Monday in January, Total Delinquent Tax and Penalty, REMARKS.

Vertical text on the right edge of the page: Killers Point, Woodland, Des Moines Beach, Horseshoe Beach, El Sueno.

Assessment Roll and Tax List of Real Property in the Town of Pine Grove Powers

Indicate Type of Property: R-Residential, C-Commercial, I-Industrial, U-Utility, F-Farm, L-Lakeshore, T-Timber, M-Mineral

Cass County, Minnesota, for Taxes for the Year 1959.

Table with columns: IN WHOSE NAME ASSESSED, TO WHOM TRANSFERRED, DESCRIPTION OF PROPERTY, TRUE AND FULL VALUATIONS, ASSESSED VALUATIONS, VALUATIONS BY SCHOOL DISTRICTS AS EQUALIZED BY DEPARTMENT OF TAXATION, TAXES, PAID, WHEN PAID, Number of Receipt, March Settlement 1960, June Settlement 1960, November Settlement 1960, Collections to First Monday in January 1961, Delinquent on First Monday in January 1961, Total Delinquent Tax and Penalty, REMARKS.

Millers Point, Woodland, Des Moines Beach, Horseshoe Beach, Luroy Beach, El Sano Beach

Assessment Roll and Tax List of Real Property in the Town of Powers

Cass County, Minnesota, for Taxes for the Year 1959.

Form 300

Indicate Type of Property: R-Residential, C-Commercial, I-Industrial, U-Utility, F-Farm, L-Lakeshore, T-Timber, M-Mineral

Table with columns for IN WHOSE NAME ASSESSED, TO WHOM TRANSFERRED, DESCRIPTION OF PROPERTY, TRUE AND FULL VALUATIONS, ASSESSED VALUATIONS, VALUATIONS BY SCHOOL DISTRICTS AS EQUALIZED BY DEPARTMENT OF TAXATION, and TAXES. Includes handwritten entries for names like Anderson, Garden, Taylor, and Bundy.

Millers Point, Woodland, Des Moines Beach, Horseshoe Beach, Mt. Seno

Assessment Roll and Tax List of Real Property in the Town of Powers

* Indicate Type of Property: R-Residential, C-Commercial, I-Industrial, U-Utility, F-Farm, L-Lakeshore, T-Timber, M-Mineral

Cass County, Minnesota, for Taxes for the Year 1959.

Table with columns: IN WHOSE NAME ASSESSED, TO WHOM TRANSFERRED, DESCRIPTION OF PROPERTY, TRUE AND FULL VALUATIONS, ASSESSED VALUATIONS, VALUATIONS BY SCHOOL DISTRICTS AS EQUALIZED BY DEPARTMENT OF TAXATION, TAXES, PAID, WHEN PAID, Number of Receipt, March Settlement 1960, June Settlement 1960, Penalty, November Settlement 1960, Penalty, Collections to First Monday in January 1961, Delinquent on First Monday in January 1961, Total Delinquent Tax and Penalty, REMARKS.

Millers Point, Woodland, Des Moines Beach, Horseshoe Beach, Luroy Beach, El Sueno

Assessment Roll and Tax List of Real Property in the Town of Powers

Indicate Type of Property: R-Residential, C-Commercial, I-Industrial, U-Utility, F-Farm, L-Lakeshore, T-Timber, M-Mineral

Cass County, Minnesota, for Taxes for the Year 1959.

Table with columns for: IN WHOSE NAME ASSESSED, TO WHOM TRANSFERRED, DESCRIPTION OF PROPERTY (SUBDIVISION, Section, Town, Block, Rng., Acres), TRUE AND FULL VALUATIONS (LAND, BUILDINGS, MACHINERY, TOTAL), ASSESSED VALUATIONS (RURAL, ALL OTHER, MACHINERY, TOTAL), VALUATIONS BY SCHOOL DISTRICTS AS EQUALIZED BY DEPARTMENT OF TAXATION, SPECIAL TAXES, TOTAL TAXES, PAID, WHEN PAID, Number of Receipt, March Settlement, June Settlement, November Settlement, Penalty, Collections to First Monday in January 1961, Delinquent on First Monday in January 1961, Total Delinquent Tax and Penalty, REMARKS.

Northern Pacific Railway Co.

No. 1 F. Exempt

Millers Point, Woodland, Des Moines Beach, Horseshoe Beach, Turvo Beach, El Sueno

Assessment Roll and Tax List of Real Property in the Town of Powers

Cass County, Minnesota, for Taxes for the Year 1959.

Form 562 MILLER-DAVIS CO., MINNEAPOLIS. *Indicate Type of Property: R-Residential, C-Commercial, I-Industrial, U-Utility, F-Farm, L-Lakeshore, T-Timber, M-Mineral

Table with columns: IN WHOSE NAME ASSESSED, TO WHOM TRANSFERRED, DESCRIPTION OF PROPERTY, TRUE AND FULL VALUATIONS, ASSESSED VALUATIONS, FINAL EQUALIZED VALUE.

Table with columns: SOLD FOR TAXES, VALUATIONS BY SCHOOL DISTRICTS AS EQUALIZED BY DEPARTMENT OF TAXATION, Tax including State Homestead, State Tax on Non-Homestead, SPECIAL TAXES, TOTAL TAXES, PAID, WHEN PAID, Number of Receipt, March Settlement, June Settlement, Penalty, November Settlement, Penalty, Collections to First Monday in January 1961, Delinquent on First Monday in January 1961, Total Delinquent Tax and Penalty, REMARKS.

Millers Point, Woodland, Des Moines Beach, Horseshoe Beach, Mt. Sheno

* Indicate Type of Property: R-Residential, C-Commercial, I-Industrial, U-Utility, F-Farm, L-Lakeshore, T-Timber, M-Mineral

Form 5CD MILLER-DAVIS CO., MINNEAPOLIS

IN WHOSE NAME ASSESSED	TO WHOM TRANSFERRED	DESCRIPTION OF PROPERTY				TRUE AND FULL VALUATIONS													FINAL EQUALIZED VALUE
		SUBDIVISION	Sec. or Lot	Town or Block	No. of Acres of Land	RURAL			ALL OTHER				MACHINERY Permanently Attached to Real Estate	TOTAL ASSESSED VALUE	Total Assessed Value as Equalized by the Board of Review				
						Homestead Up to \$4,000 20%	Over \$4,000 and Non-Homestead 33 1/3%	Timber Land Class 3e 20%	Homestead Up to \$1,000 25%	Over \$1,000 and Non-Homestead 40%									
M.G. & John C. & Florence Dumont		7 1/2 of NE 1/4 less 265' x 800' x 800' x 544.5' of NW 1/4	8	139	30	70												102	
State of Minnesota																			
Maryjorie B. Dumont		NE 1/4 of NW 1/4 of NE 1/4			30													43	
Walter & Helores Karhula		SW 1/4 of NW 1/4 East Lot 1			33													66	
Maryjorie B. Dumont		SE 1/4 of NW 1/4			40													47	
Walter & Helores M. Karhula		NE 1/4 of W. 700' of Lot 2			40													78	
Quane E. & Edith Enger		NE 1/4 of SW 1/4			40													86	
Walter Myers		SW 1/4 of SW 1/4 East Lot 2			32	85												144	
Lila L. & Moses J. Zaffka		SW 1/4 of SW 1/4 less E. 1 rd.			40													64	
Quane E. & Edith Enger		SE 1/4 of SW 1/4			40													125	
Sigrid Oak		NE 1/4 of NE 1/4 of NE 1/4 of NW 1/4			10													27	
N. W. Papan		NE 1/4 of SE 1/4			40													101	
State of Minnesota																			
Adella Benrose		SW 1/4 of SE 1/4			40													101	
Walter Myers		E. 1 rd. of SW 1/4 of SW 1/4			40													112	
																		10	
																		189	
																		3998	
																		753	
																		942	
																		144	
																		897	
																		1086	
																		252	
																		3998	
																		753	
																		942	
																		189	
																		3998	
																		753	
																		942	

SOLD FOR TAXES	VALUATIONS BY SCHOOL DISTRICTS AS EQUALIZED BY DEPARTMENT OF TAXATION						Tax including State Homestead	State Tax on Non-Homestead	SPECIAL TAXES	TOTAL TAXES	PAID	WHEN PAID	Number of Receipt	March Settlement 1960	June Settlement 1960	Penalty	November Settlement 1960	Penalty	Collections to First Monday in January 1961	Penalty	Delinquent on First Monday in January 1961	Total Delinquent Tax and Penalty	REMARKS
	District No.	District No.	District No.	District No.	District No.	District No.																	
	Rate	Rate	Rate	Rate	Rate	Rate																	
	102						2576	64	2640	1	PAID IN FULL	MAY 31 1960	12785		2640							9234	
	23						582	14	596	6	PAID IN FULL	MAY 31 1960	12785		596							9234	
	66						1668	42	1710	8	PAID IN FULL	MAY 31 1960	12788		1710							9232	
	47						1188	30	1218	9	PAID IN FULL	MAY 31 1960	12785		1218							9234	
	78						1970	48	2018	10	PAID IN FULL	MAY 31 1960	12788		2018							9030	
	86						2172	54	2226	11	1st HALF PAID	MAY 31 1960	10311		1113							15314	
	144						3998	90	4088	12	PAID IN FULL	MAY 24 1960	8904		4088							9506	
	64						1616		1616	13	1st HALF PAID	MAY 31 1960	12823		808		808					9507	
	125						3158		3158	14	1st HALF PAID	MAY 31 1960	10311		1579							15314	
	27						682	16	698	15	PAID IN FULL	MAY 25 1960	12245		698							9231	
	101						2552	62	2614	16	PAID IN FULL	MAY 31 1960	15823		2614							14971	
	101						2552	62	2614	18	2nd HALF PAID	OCT 31 1960	19304		1307							9233	
	112						2830	70	2900	19	1st HALF PAID	MAY 31 1960	12786		1450		2757X					11	
	10						252	06	258	20	PAID IN FULL	MAY 24 1960	8904		258							9506	
	942						2798	558	28354						22097		3565					2692	

Millers Point
Woodland
Des Moines Beach
Horseshoe Beach
Luroy Beach
El Sueno

Assessment Roll and Tax List of Real Property in the Town of Powers

* Indicate Type of Property: R-Residential, C-Commercial, I-Industrial, U-Utility, F-Farm, L-Lakeshore, T-Timber, M-Mineral

Form 5CD MILLER-DAVIS CO., MINNEAPOLIS

Table with columns: IN WHOSE NAME ASSESSED, TO WHOM TRANSFERRED, DESCRIPTION OF PROPERTY, TRUE AND FULL VALUATIONS, ASSESSED VALUATIONS, and FINAL EQUALIZED VALUE. Includes entries for Ralph B. Bundy, Otto Kaste, and Arnold A. Anderson.

Cass County, Minnesota, for Taxes for the Year 1959.

Table with columns: VALUATIONS BY SCHOOL DISTRICTS AS EQUALIZED BY DEPARTMENT OF TAXATION, TAXES, PAID, WHEN PAID, and REMARKS. Includes entries for 1st Half Paid, 2nd Half Paid, and PAID IN FULL with specific dates and amounts.

Vertical text on the right edge of the page: Killers Point, Woodland, Des Moines Beach, Horseshoe Beach, Huron Beach, El Sueno.

Assessment Roll and Tax List of Real Property in the Town of Powers

Indicate Type of Property: R-Residential, C-Commercial, I-Industrial, U-Utility, F-Farm, L-Lakeshore, T-Timber, M-Mineral

Form 502 MILLER-DAVIS CO., MINNEAPOLIS

Table with columns: IN WHOSE NAME ASSESSED, TO WHOM TRANSFERRED, SUBDIVISION, TRUE AND FULL VALUATIONS (LAND, BUILDINGS, MACHINERY, TOTAL), ASSESSED VALUATIONS (RURAL, ALL OTHER, MACHINERY, TOTAL ASSESSED), Total Assessed Value, FINAL EQUALIZED VALUE.

Cass County, Minnesota, for Taxes for the Year 1959.

Table with columns: SOLD FOR TAXES, VALUATIONS BY SCHOOL DISTRICTS AS EQUALIZED BY DEPARTMENT OF TAXATION, Tax including State Homestead, State Tax on Non-Homestead, SPECIAL TAXES, TOTAL TAXES, PAID, WHEN PAID, Number of Receipt, March Settlement, June Settlement, Penalty, November Settlement, Penalty, Collections to First Monday in January 1961, Delinquent on First Monday in January 1961, Total Delinquent Tax and Penalty, REMARKS.

Assessment Roll and Tax List of Real Property in the Town of Powers

Indicate Type of Property: R-Residential, C-Commercial, I-Industrial, U-Utility, F-Farm, L-Lakeshore, T-Timber, M-Mineral

Table with columns: IN WHOSE NAME ASSESSED, TO WHOM TRANSFERRED, DESCRIPTION OF PROPERTY, TRUE AND FULL VALUATIONS, ASSESSED VALUATIONS, and FINAL EQUALIZED VALUE. Includes entries for Paul J. & Mary J. Eklund, Alfred B. & Hazel E. Bresson, Herman W. & Martha L. Wolf, etc.

(Continued Next page)

Cass County, Minnesota, for Taxes for the Year 1959.

Table with columns: SOLD FOR TAXES, VALUATIONS BY SCHOOL DISTRICTS AS EQUALIZED BY DEPARTMENT OF TAXATION, Tax including State Homestead, State Tax on Non-Homestead, SPECIAL TAXES, TOTAL TAXES, PAID, WHEN PAID, Number of Receipt, March Settlement 1960, June Settlement 1960, Penalty, November Settlement 1960, Collections to First Monday in January 1961, Delinquent on First Monday in January 1961, Total Delinquent Tax and Penalty, REMARKS. Includes entries for Paul J. & Mary J. Eklund, Alfred B. & Hazel E. Bresson, etc.

Vertical text on the right edge of the page: Killers Point, Woodland, Des Moines Beach, Horseshoe Beach, El Sueno

Assessment Roll and Tax List of Real Property in the Town of Powers

Indicate Type of Property: R-Residential, C-Commercial, I-Industrial, U-Utility, F-Farm, L-Lakeshore, T-Timber, M-Mineral

Form 502 MILLER-DAVIS CO., MINNEAPOLIS

Table with columns: IN WHOSE NAME ASSESSED, TO WHOM TRANSFERRED, DESCRIPTION OF PROPERTY, TRUE AND FULL VALUATIONS, ASSESSED VALUATIONS, and FINAL EQUALIZED VALUE. Includes entries for Richard B. + Esther M. Hellegren and H. M. Shemin.

173

Cass County, Minnesota, for Taxes for the Year 1959.

Table with columns: SOLD FOR TAXES, VALUATIONS BY SCHOOL DISTRICTS AS EQUALIZED BY DEPARTMENT OF TAXATION, SPECIAL TAXES, TOTAL TAXES, PAID, WHEN PAID, Number of Receipt, March Settlement, June Settlement, November Settlement, Penalty, Collections to First Monday in January 1961, Delinquent on First Monday in January 1961, Total Delinquent Tax and Penalty, REMARKS. Includes handwritten entries for tax payments and dates.

175

2438

116

2484

1491

993

Vertical text on the right edge of the page: Killers Point, Woodland, Des Moines Beach, Horseshoe Beach, Huron Beach, El Sueno

Assessment Roll and Tax List of Real Property in the Town of Bower,

Indicate Type of Property: R-Residential, C-Commercial, I-Industrial, U-Utility, F-Farm, L-Lakeshore, T-Timber, M-Mineral

Form SCD-1959-MINN.

Cass County, Minnesota, for Taxes for the Year 1959.

IN WHOSE NAME ASSESSED	TO WHOM TRANSFERRED	DESCRIPTION OF PROPERTY				No. School District	Indicate Homestead Yes or No	Indicate Agricultural Yes or No	Indicate Type of Property	TRUE AND FULL VALUATIONS							Total Assessed Value as Equalized by the Board of Review	FINAL EQUALIZED VALUE
		SUBDIVISION	Sec. or Lot	Town or Block	Number of Acres of Land					RURAL		ALL OTHER			MACHINERY Permanently Attached to Real Estate	TOTAL ASSESSED VALUE		
										Acres	100ths	Homestead Up to \$4,000 20%	Over \$4,000 and Non-Homestead 33 1/3 %	Timber Land Class 3e 20%				
State of Minnesota		1	NE 1/4 of NE 1/4	12 139 30	114													
State of Minnesota		2	NW 1/4 of NE 1/4															
State of Minnesota		3	SW 1/4 of NE 1/4															
State of Minnesota		4	SE 1/4 of NE 1/4															
State of Minnesota		5																
State of Minnesota		6	NE 1/4 of NW 1/4															
State of Minnesota		7	NW 1/4 of NW 1/4															
State of Minnesota		8	SW 1/4 of NW 1/4															
State of Minnesota		9	SE 1/4 of NW 1/4															
State of Minnesota		10																
State of Minnesota		11	NE 1/4 of SW 1/4															
State of Minnesota		12	NW 1/4 of SW 1/4															
State of Minnesota		13	SW 1/4 of SW 1/4															
State of Minnesota		14	SE 1/4 of SW 1/4															
State of Minnesota		15																
State of Minnesota		16	NE 1/4 of SE 1/4															
State of Minnesota		17	NW 1/4 of SE 1/4															
State of Minnesota		18	SW 1/4 of SE 1/4															
State of Minnesota		19	SE 1/4 of SE 1/4															
State of Minnesota		20																

SOLD FOR TAXES	VALUATIONS BY SCHOOL DISTRICTS AS EQUALIZED BY DEPARTMENT OF TAXATION						Tax including State Homestead	State Tax on Non-Homestead	SPECIAL TAXES	TOTAL TAXES	PAID	WHEN PAID	Number of Receipt	March Settlement 1960	June Settlement 1960	Penalty 1960	November Settlement 1960	Penalty	Collections to First Monday in January 1961	Penalty	Delinquent on First Monday in January 1961	Total Delinquent Tax and Penalty	REMARKS
	District No.	District No.	District No.	District No.	District No.	District No.																	
	Rate	Rate	Rate	Rate	Rate	Rate																	
	Mills	Mills	Mills	Mills	Mills	Mills																	
1																							
2																							
3																							
4																							
5																							
6																							
7																							
8																							
9																							
10																							
11																							
12																							
13																							
14																							
15																							
16																							
17																							
18																							
19																							
20																							

Millers Point
Woodland
Des Moines Beach
Horseshoe Beach
El Sueño

Assessment Roll and Tax List of Real Property in the Town of Powers

Indicate Type of Property: R-Residential, C-Commercial, I-Industrial, U-Utility, F-Farm, L-Lakeshore, T-Timber, M-Mineral

Form SCD ILLINOIS-STATE BOARD OF EQUALIZATION

Table with columns: IN WHOSE NAME ASSESSED, TO WHOM TRANSFERRED, DESCRIPTION OF PROPERTY, TRUE AND FULL VALUATIONS, ASSESSED VALUATIONS, and FINAL EQUALIZED VALUE. Includes handwritten entries for lots 1-5 and 16-20.

Handwritten notes: Andrew Breuck, Judson LaMoure, Jr., Mabel J. Lee, Judson LaMoure Co, Andrew Breuck

Cass County, Minnesota, for Taxes for the Year 1959.

Table with columns: VALUATIONS BY SCHOOL DISTRICTS AS EQUALIZED BY DEPARTMENT OF TAXATION, TAX including State Homestead, State Tax on Non-Homestead, SPECIAL TAXES, TOTAL TAXES, PAID, WHEN PAID, Number of Receipt, March Settlement 1960, June Settlement 1960, November Settlement 1960, Collections to First Monday in January 1961, Delinquent on First Monday in January 1961, Total Delinquent Tax and Penalty, REMARKS.

Vertical text on the right edge: Killers Point, Woodland, Des Moines Beach, Horseshoe Beach, El Sueno

Assessment Roll and Tax List of Real Property in the Town of Bowena

Form 300 (REVISED) DEPARTMENT OF REVENUE

Indicate Type of Property: R-Residential, C-Commercial, I-Industrial, U-Utility, F-Farm, L-Lakeshore, T-Timber, M-Mineral

Table with columns: IN WHOSE NAME ASSESSED, TO WHOM TRANSFERRED, DESCRIPTION OF PROPERTY, TRUE AND FULL VALUATIONS, ASSESSED VALUATIONS, and FINAL EQUALIZED VALUE. Includes handwritten entries for various lots and owners like Walter B. Quast and Eugene M. + John Harry Leaf.

Cass County, Minnesota, for Taxes for the Year 1959.

Table with columns: VALUATIONS BY SCHOOL DISTRICTS AS EQUALIZED BY DEPARTMENT OF TAXATION, TAX INCLUDING STATE HOMESTEAD, STATE TAX ON NON-HOMESTEAD, SPECIAL TAXES, TOTAL TAXES, PAID, WHEN PAID, Number of Receipt, March Settlement 1960, June Settlement 1960, November Settlement 1960, Collections to First Monday in January 1961, Delinquent on First Monday in January 1961, Total Delinquent Tax and Penalty, REMARKS. Includes handwritten tax amounts and payment dates.

Vertical text on the right edge of the page: Killers Point, Woodland, Des Moines Beach, Horseshoe Beach, Larry Beach, El Sueno

Assessment Roll and Tax List of Real Property in the Town of Powers

Indicate Type of Property: R-Residential, C-Commercial, I-Industrial, U-Utility, F-Farm, L-Lakeshore, T-Timber, M-Mineral

Cass County, Minnesota, for Taxes for the Year 1959.

Table with columns: IN WHOSE NAME ASSESSED, TO WHOM TRANSFERRED, DESCRIPTION OF PROPERTY, TRUE AND FULL VALUATIONS, ASSESSED VALUATIONS, VALUATIONS BY SCHOOL DISTRICTS AS EQUALIZED BY DEPARTMENT OF TAXATION, TAXES, PAID, WHEN PAID, Number of Receipt, March Settlement 1960, June Settlement 1960, November Settlement 1960, Penalty, Collections to First Monday in January 1961, Delinquent on First Monday in January 1961, Total Delinquent Tax and Penalty, REMARKS.

A. J. Roberts & G. L. Thorpe
State of Minnesota

William Cairney
Roy & Gertrude Cairney
State of Minnesota

Paul L. Britz
State of Minnesota

Lloyd & Dagmar Bradford
Pennetha Scott
State of Minnesota

Francis M. & Anna Louise Beate
Arthur Breuck
State of Minnesota

Millers Point
Woodland
Des Moines Beach
Horseshoe Beach
Curry Beach
El Sueno

Assessment Roll and Tax List of Real Property in the Town of Powers

Cass County, Minnesota, for Taxes for the Year 1959.

Indicate Type of Property: R-Residential, C-Commercial, I-Industrial, U-Utility, F-Farm, L-Lakeshore, T-Timber, M-Mineral

Table with columns: IN WHOSE NAME ASSESSED, TO WHOM TRANSFERRED, DESCRIPTION OF PROPERTY, TRUE AND FULL VALUATIONS, ASSESSED VALUATIONS, VALUATIONS BY SCHOOL DISTRICTS AS EQUALIZED BY DEPARTMENT OF TAXATION, TAX INCLUDING STATE HOMESTEAD, SPECIAL TAXES, TOTAL TAXES, PAID, WHEN PAID, Number of Receipt, March Settlement 1960, June Settlement 1960, November Settlement 1960, Collections to First Monday in January 1961, Delinquent on First Monday in January 1961, Total Delinquent Tax and Penalty, REMARKS.

Assessment Roll and Tax List of Real Property in the Town of Powers

Indicate Type of Property: R-Residential, C-Commercial, I-Industrial, U-Utility, F-Farm, L-Lakeshore, T-Timber, M-Mineral

Form 5CD MILLER-DAVIS CO., MINNEAPOLIS

Table with columns: IN WHOSE NAME ASSESSED, TO WHOM TRANSFERRED, DESCRIPTION OF PROPERTY, TRUE AND FULL VALUATIONS, ASSESSED VALUATIONS, FINAL EQUALIZED VALUE.

559

Cass County, Minnesota, for Taxes for the Year 1959.

Table with columns: VALUATIONS BY SCHOOL DISTRICTS AS EQUALIZED BY DEPARTMENT OF TAXATION, Tax including State Homestead, SPECIAL TAXES, TOTAL TAXES, PAID, WHEN PAID, Number of Receipt, March Settlement 1960, June Settlement 1960, November Settlement 1960, Penalty, Collections to First Monday in January 1961, Delinquent on First Monday in January 1961, Total Delinquent Tax and Penalty, REMARKS.

Millers Point, Woodland, Des Moines Beach, Horseshoe Beach, Larry Beach, El Sueño

Assessment Roll and Tax List of Real Property in the Town of Powers

* Indicate Type of Property: R-Residential, C-Commercial, I-Industrial, U-Utility, F-Farm, L-Lakeshore, T-Timber, M-Mineral

Form 5CD MILLER-DAVIS CO., MINNEAPOLIS

Table with columns: IN WHOSE NAME ASSESSED, TO WHOM TRANSFERRED, DESCRIPTION OF PROPERTY, TRUE AND FULL VALUATIONS, ASSESSED VALUATIONS, FINAL EQUALIZED VALUE.

Cass County, Minnesota, for Taxes for the Year 1959.

Table with columns: VALUATIONS BY SCHOOL DISTRICTS AS EQUALIZED BY DEPARTMENT OF TAXATION, TAX INCLUDING STATE HOMESTEAD, STATE TAX ON NON-HOMESTEAD, SPECIAL TAXES, TOTAL TAXES, PAID, WHEN PAID, Number of Receipt, March Settlement 1960, June Settlement 1960, November Settlement 1960, Collections to First Monday in January 1961, Delinquent on First Monday in January 1961, Total Delinquent Tax and Penalty, REMARKS.

Vertical text on the right edge of the page: Millers Point, Woodland, Des Moines Beach, Horseshoe Beach, Hurdy Beach, El Sueno.

Assessment Roll and Tax List of Real Property in the Town of Bowers

Indicate Type of Property: R-Residential, C-Commercial, I-Industrial, U-Utility, F-Farm, L-Lakeshore, T-Timber, M-Mineral

Form SCD MILLER-DAVIS CO., MINNEAPOLIS

Table with columns: IN WHOSE NAME ASSESSED, TO WHOM TRANSFERRED, DESCRIPTION OF PROPERTY, TRUE AND FULL VALUATIONS, ASSESSED VALUATIONS, FINAL EQUALIZED VALUE. Includes handwritten entries for Jean Mc Dowell and C. L. Curry.

Cass County, Minnesota, for Taxes for the Year 1959.

Table with columns: SOLD FOR TAXES, VALUATIONS BY SCHOOL DISTRICTS AS EQUALIZED BY DEPARTMENT OF TAXATION, Tax including State Homestead, SPECIAL TAXES, TOTAL TAXES, PAID, WHEN PAID, Number of Receipt, March Settlement 1960, June Settlement 1960, November Settlement 1960, Collections to First Monday in January 1961, Delinquent on First Monday in January 1961, Total Delinquent Tax and Penalty, REMARKS. Includes handwritten entries for Jean Mc Dowell and C. L. Curry.

Vertical text on the right edge of the page: Killers Point, Woodland, Des Moines Beach, Horseshoe Beach, Larry Beach, El Sueno.

Assessment Roll and Tax List of Real Property in the Town of Bowers

* Indicate Type of Property: R-Residential, C-Commercial, I-Industrial, U-Utility, F-Farm, L-Lakeshore, T-Timber, M-Mineral

Form 503 MILLER-DAVIS CO., MINNEAPOLIS

Table with columns: IN WHOSE NAME ASSESSED, TO WHOM TRANSFERRED, DESCRIPTION OF PROPERTY, TRUE AND FULL VALUATIONS, ASSESSED VALUATIONS, and FINAL EQUALIZED VALUE. Includes handwritten entries for Blanche Zaffke, Lucille Arnie Jew, and Jean M. Douell.

640

Cass County, Minnesota, for Taxes for the Year 1959.

Table with columns: SOLD FOR TAXES, VALUATIONS BY SCHOOL DISTRICTS AS EQUALIZED BY DEPARTMENT OF TAXATION, Tax including State Homestead, SPECIAL TAXES, TOTAL TAXES, PAID, WHEN PAID, Number of Receipt, March Settlement, June Settlement, Penalty, November Settlement, Penalty, Collections to First Monday in January 1961, Penalty, Delinquent on First Monday in January 1961, Total Delinquent Tax and Penalty, and REMARKS. Includes handwritten entries for Blanche Zaffke, Lucille Arnie Jew, and Jean M. Douell.

H 1765

44588

44588

26008

1869

16711

Vertical text on the right edge: Millers Point, Woodland, Dea Johns Beach, Horseshoe Beach, Hurry Beach, El Sueño

Assessment Roll and Tax List of Real Property in the Town of Browns

* Indicate Type of Property: R-Residential, C-Commercial, I-Industrial, U-Utility, F-Farm, L-Lakeshore, T-Timber, M-Mineral

Form 5 CD MILLER-DAVIS CO., MINNEAPOLIS

Table with columns: IN WHOSE NAME ASSESSED, TO WHOM TRANSFERRED, DESCRIPTION OF PROPERTY, TRUE AND FULL VALUATIONS, ASSESSED VALUATIONS, and FINAL EQUALIZED VALUE. Includes handwritten entries for various lots and owners like Myrtle Reeve and Grace Johnson.

Cass County, Minnesota, for Taxes for the Year 1959.

Table with columns: SOLD FOR TAXES, VALUATIONS BY SCHOOL DISTRICTS AS EQUALIZED BY DEPARTMENT OF TAXATION, Tax including State Homestead, State Tax on Non-Homesteaded, SPECIAL TAXES, TOTAL TAXES, PAID, WHEN PAID, Number of Receipt, March Settlement 1960, June Settlement 1960, Penalty, November Settlement 1960, Collections to First Monday in January 1961, Delinquent on First Monday in January 1961, Total Delinquent Tax and Penalty, and REMARKS. Includes handwritten entries for various lots and owners.

Vertical text on the right edge of the page: Millers Point, Woodland, Des Moines Beach, Horseshoe Beach, Murray Beach, El Sueno.

Assessment Roll and Tax List of Real Property in the Town of Powers

Indicate Type of Property: R-Residential, C-Commercial, I-Industrial, U-Utility, F-Farm, L-Lakeshore, T-Timber, M-Mineral

Form SCD

Table with columns: IN WHOSE NAME ASSESSED, TO WHOM TRANSFERRED, DESCRIPTION OF PROPERTY, TRUE AND FULL VALUATIONS, ASSESSED VALUATIONS, FINAL EQUALIZED VALUE. Includes handwritten entries for various lots and owners like 'Varion & Concetta Fox' and 'Orville J. & Luella B. Callahan'.

Cass County, Minnesota, for Taxes for the Year 1959.

Table with columns: VALUATIONS BY SCHOOL DISTRICTS AS EQUALIZED BY DEPARTMENT OF TAXATION, Tax including State Homestead, State Tax on Non-Homestead, SPECIAL TAXES, TOTAL TAXES, PAID, WHEN PAID, Number of Receipt, March Settlement 1960, June Settlement 1960, Penalty, November Settlement 1960, Collections to First Monday in January 1961, Delinquent on First Monday in January 1961, Total Delinquent Tax and Penalty, REMARKS. Includes handwritten entries for tax amounts and payment dates.

Vertical text on the right edge of the page: Millers Point, Woodland, Des Moines Beach, Horseshoe Beach, Hurry Beach, El Sueño.

Assessment Roll and Tax List of Real Property in the Town of Powers

* Indicate Type of Property: R-Residential, C-Commercial, I-Industrial, U-Utility, F-Farm, L-Lakeshore, T-Timber, M-Mineral

Form 500

Table with columns: IN WHOSE NAME ASSESSED, TO WHOM TRANSFERRED, DESCRIPTION OF PROPERTY, TRUE AND FULL VALUATIONS, ASSESSED VALUATIONS, FINAL EQUALIZED VALUE.

Cass County, Minnesota, for Taxes for the Year 1959.

Table with columns: VALUATIONS BY SCHOOL DISTRICTS AS EQUALIZED BY DEPARTMENT OF TAXATION, TAX INCLUDING STATE HOMESTEAD, SPECIAL TAXES, TOTAL TAXES, PAID, WHEN PAID, Number of Receipt, March Settlement, June Settlement, November Settlement, Penalty, Collections to First Monday in January 1961, Delinquent on First Monday in January 1961, Total Delinquent Tax and Penalty, REMARKS.

(Continued next page) Fred Gerhard Part of Lot 14 - 3 1/2 acres

Millers Point Woodland Des Moines Beach Horseshoe Beach Huron Beach El Seno

Assessment Roll and Tax List of Real Property in the Town of Powers

Indicate Type of Property: R-Residential, C-Commercial, I-Industrial, U-Utility, F-Farm, L-Lakeshore, T-Timber, M-Mineral

Form 500 MILLING-SAYS COMPANY, MINNEAPOLIS

Table with columns: IN WHOSE NAME ASSESSED, TO WHOM TRANSFERRED, DESCRIPTION OF PROPERTY, TRUE AND FULL VALUATIONS, ASSESSED VALUATIONS, FINAL EQUALIZED VALUE.

Cass County, Minnesota, for Taxes for the Year 1959.

Table with columns: VALUATIONS BY SCHOOL DISTRICTS AS EQUALIZED BY DEPARTMENT OF TAXATION, TAX INCLUDING STATE HOMESTEAD, SPECIAL TAXES, TOTAL TAXES, PAID, WHEN PAID, Number of Receipt, March Settlement 1960, June Settlement 1960, November Settlement 1960, Penalty, Collections to First Monday in January 1961, Delinquent on First Monday in January 1961, Total Delinquent Tax and Penalty, REMARKS.

Miller's Print, Woodland, Des Moines Beach, Horseshoe Beach, El Sueño

Assessment Roll and Tax List of Real Property in the Town of Powers, Cass County, Minnesota, for Taxes for the Year 1959.

* Indicate Type of Property: R-Residential, C-Commercial, I-Industrial, U-Utility, F-Farm, L-Lakeshore, T-Timber, M-Mineral

Form 5CD

Table with columns: IN WHOSE NAME ASSESSED, TO WHOM TRANSFERRED, SUBDIVISION, TRUE AND FULL VALUATIONS, ASSESSED VALUATIONS, FINAL EQUALIZED VALUE. Includes entries for Eugene D. & Mary Landis, E. R. Lippika, Arnold B. & Sophie A. Anderson, etc.

(Continued on next page)

Cass County, Minnesota, for Taxes for the Year 1959.

Table with columns: VALUATIONS BY SCHOOL DISTRICTS AS EQUALIZED BY DEPARTMENT OF TAXATION, Tax Including State Homestead, SPECIAL TAXES, TOTAL TAXES, PAID, WHEN PAID, Number of Receipt, March Settlement, June Settlement, November Settlement, Collections to First Monday in January 1961, Delinquent on First Monday in January 1961, Total Delinquent Tax and Penalty, REMARKS. Includes entries for Eugene D. & Mary Landis, E. R. Lippika, etc.

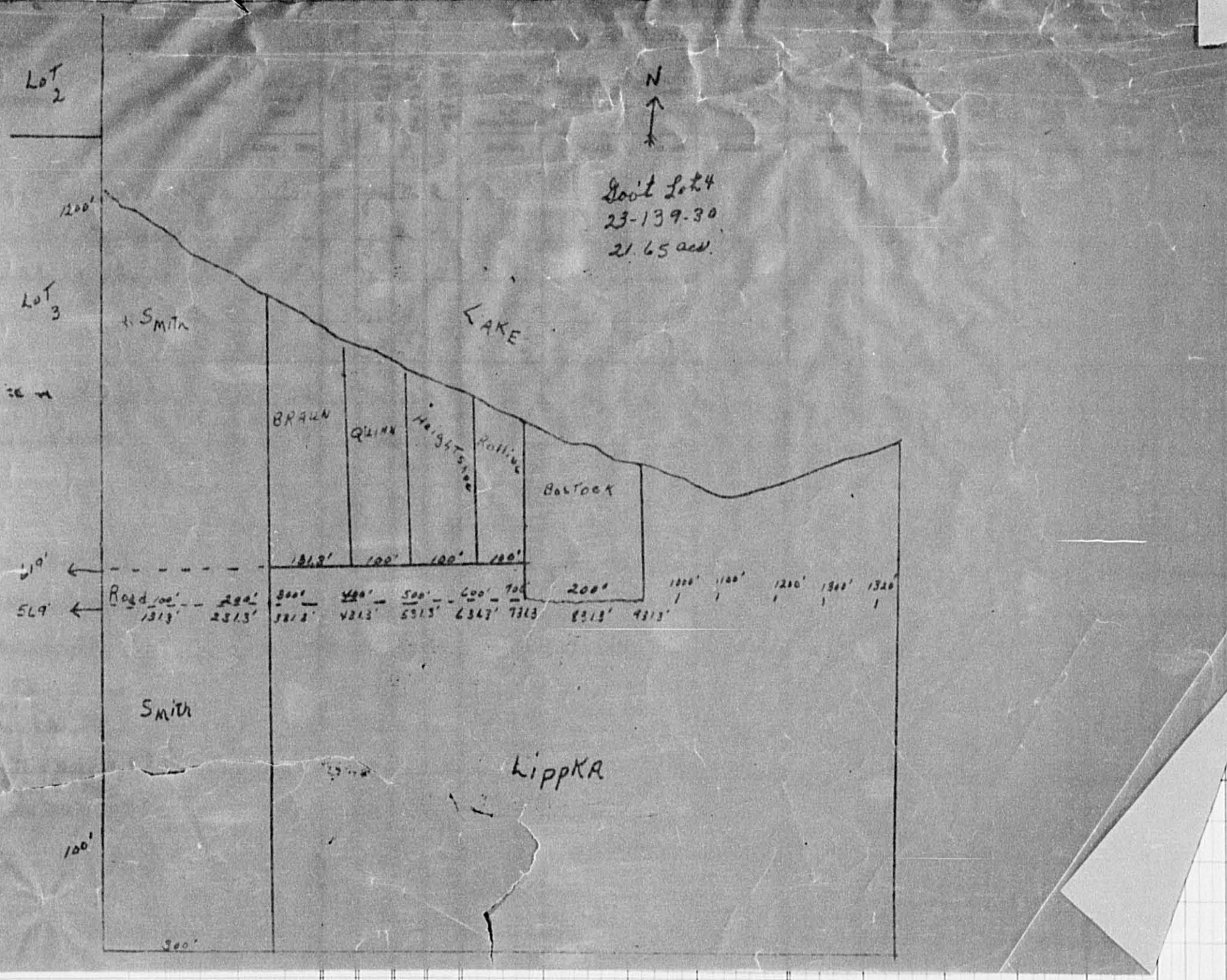
Millers Point, Woodland, Des Moines Beach, Horseshoe Beach, El Sueño

Form SCD 11-15-58 REVISED, MINNAPOLIS

DEF

IN WHOSE NAME ASSESSED TO WHOM TRANSFERRED

SU



T-Timber, M-Mineral

TOTAL ASSESSED VALUE	Total Assessed Value as Equalized by the Board of Review	FINAL EQUALIZED VALUE
Dollars	Dollars	Dollars

SOLD FOR TAXES	District No.	District Rate	District No.	District Rate	District No.	District Rate	Tax including State Homestead	State Tax on Non-Homestead	SPECIAL TAXES	TOTAL TAXES	PAID	WHEN PAID	Number of Receipt	March Settlement 1960	June Settlement 1960	Penalty	November Settlement 1960	Penalty	Collections to First Monday in January 1961	Penalty	Delinquent on First Monday in January 1961	Total Delinquent Tax and Penalty	REMARKS
							\$ cts	\$ cts	\$ cts	\$ cts		Month Day Year		\$ cts	\$ cts	\$ cts	\$ cts	\$ cts	\$ cts	\$ cts	\$ cts	\$ cts	
1			H 93				2582			2582		2nd HALF PAID OCT 18 1960	15290		12 91		12 91					9175	
2			H 45				1250			1250		1st HALF PAID MAY 12 1960	6814		12 50							9072	
3			110				3054	68		3122		3rd PAID IN FULL MAY 24 1960	8900		31 22							9174	
4			63				1750	40		1790		4th PAID IN FULL MAY 13 1960	6834		17 90							9242	
5			10				278	26		284		2nd HALF PAID AUG 10 1960	11635									9243	
6			175				4858	108		4966		1st HALF PAID MAY 16 1960	3524		142		142					9176	
7			96				2666	60		2726		2nd HALF PAID OCT 27 1960	17004		24 83		34 83					9092	
8																							
9																							
10			137				3804	86		3890		10th PAID IN FULL MAY 20 1960	9750		38 90							9173	
11			67				1860	42		1902											1902		
12			72				1998	44		2042		12th PAID IN FULL MAY 12 1960	6821		20 42							9106	
13			80				2222	50		2272		13th PAID IN FULL MAY 19 1960	12026		22 72							9172	
14			105				2916	66		2982		14th PAID IN FULL MAY 9 1960	3344		29 82							9172	
15			4				112	22		114		15th PAID IN FULL APR 29 1960	6488		1 14							9089	
16			67				1692	42		1734		16th PAID IN FULL JUN 27 1960	10772		17 34		26					9123	
17																							
18																							
19																							
20																							
			67				29350	138		31656					24104		3650				1902		
							1692	614															
							1057	1124															

1813

Millers Point
Woodland
Des Moines Beach
Horseshoe Beach
Lucky Beach
El Sueno

IN WHOSE NAME ASSESSED	TO WHOM TRANSFERRED	DESCRIPTION OF PROPERTY				TRUE AND FULL VALUATIONS											TOTAL ASSESSED VALUE	Final Assessed Value as Equivalized by the Board of Review	FINAL EQUALIZED VALUE
		Subdivision	Sec. or Lot	Town or Block	Rgt. Number of Acres of Land	LAND EXCLUSIVE OF STRUCTURES AND IMPROVEMENTS	BUILDINGS AND OTHER STRUCTURES	MACHINERY PERMANENTLY ATTACHED TO REAL ESTATE	TOTAL TRUE AND FULL VALUE	RURAL		ALL OTHER				MACHINERY PERMANENTLY ATTACHED TO REAL ESTATE			
Calyde H. + Annie S. Querni		E 1/2 of W 1/2 431.3' except 2.618' of Block Lot 4	23	139 30	1.20	1/4	gr	Tm	R										
L. H. + Malva E. Fichter		25.100' of W 1/2 636' except 2.618' of Block Lot 4			64		gr	Tm	"										
Ornie U. + Rola K. Rollins		35.100' of W 1/2 730' except 2.618' of Block Lot 4			50		Tm	Tm	L										
Lyfe Thomas		4 acres of Block Lot 6			1		Tm	"	"										
Frank Replitch		5 1/2 acres of Block Lot 8																	
A. Leslie + Tomgene S. Smith		E 1/2 of W 1/2 531.3' except 2.618'	7	50	7.50		Tm	"	"										
Carl H. + Laura A. Tranter		E 1/2 of W 1/2 531.3' except 2.618'	7		7.5		Tm	"	"										
		SWNW																	
		SEWN																	
Otto A. Sell		10.200' x 400' on shore of Block Lot 6			1.90		Tm	"	"										
Hans E. + Holly B. Anderson		11/2 acres of Block Lot 6 of S 1/2 of S 1/2			1.62		Tm	Tm	L										
William H. + Martha Schroeder		1 ac. of Block Lot 3 (Street 7)			1		Tm	"	"										
Peter + Anna Kudnel		1 ac. of Block Lot 3 (Street 8)			1		Tm	"	"										
Anthony H. + Helen Schroeder		1 ac. of Block Lot 3 (Street 8)			1		Tm	"	"										
A. Leslie Smith		1.570' of S 1/2 of S 1/2 of N. 1/2 W. 1/2 of S 1/2					Tm	"	T										
Agness Schelty		1.570' of S 1/2 of S 1/2 of N. 1/2 W. 1/2 of S 1/2					Tm	gr	T										
A. G. + Malva Wilson		1.570' of S 1/2 of S 1/2 of N. 1/2 W. 1/2 of S 1/2					Tm	gr	T										
		SEWN																	
		SEWN																	

SOLD FOR TAXES	VALUATIONS BY SCHOOL DISTRICTS AS EQUALIZED BY DEPARTMENT OF TAXATION						Tas including State Homestead	State Tax on Non-Homestead	SPECIAL TAXES	TOTAL TAXES	PAID	WHEN PAID	Number of Receipt	March Settlement 1960	June Settlement 1960	Penalty	November Settlement 1960	Penalty	Collections to First Monday in January 1961	Penalty	Delinquency on First Monday in January 1961	Total Delinquency Tax and Penalty	REMARKS	
	District No.	District Rate	District No.	District Rate	District No.	District Rate																		
1								6.2		258.2	258.2	2nd HALF PAID	OCT 18 1960	1291	1291								9175.	
2										12.50	12.50	1st HALF PAID	MAY 12 1960	6815	6815								9093.	
3										3054	3054	3rd PAID IN FULL	MAY 24 1960	8900	8900								9174	
4										1750	1750	4th PAID IN FULL	MAY 13 1960	6834	6834								9242	
5										278	278	2nd HALF PAID	AUG 10 1960	1635	1635								9242.	
6										4858	4858	1st HALF PAID	MAY 31 1960	12781	12781								9176	
7										2666	2666	1st PAID IN FULL	MAY 13 1960	6832	6832								9092.	
8																								
9																								
10											3804	3804	PAID IN FULL	MAY 20 1960	9750	9750								9173.
11	SOLD FOR TAXES										1860	1860											1902	
12											1998	1998	PAID IN FULL	MAY 12 1960	6821	6821								9186
13											2222	2222	1st PAID IN FULL	MAY 19 1960	12024	12024								9180
14	Sold for Taxes										2916	2916	PAID IN FULL	MAY 9 1960	3344	3344								1172
15											112	112	PAID IN FULL	APR 26 1960	6408	6408								9239
16											1692	1692	PAID IN FULL	JUN 27 1960	10772	10772			1734	26				9123
17																								
18																								
19																								
20																								

67 1385 138 29350
 917 986 1692
 1057 1124 31042

Hilliers Point
 Woodland
 Deo Joanes Beach
 Horseshoe Beach/Lucy Beach
 El Suro
 more

Assessment Roll and Tax List of Real Property in the Town of Bowers, Cass County, Minnesota, for Taxes for the Year 1959.

Form SCD MILLER-DAVIS CO., MINNEAPOLIS

Indicate Type of Property: R-Residential, C-Commercial, I-Industrial, U-Utility, F-Farm, L-Lakeshore, T-Timber, M-Mineral

Table with columns: IN WHOSE NAME ASSESSED, TO WHOM TRANSFERRED, DESCRIPTION OF PROPERTY, TRUE AND FULL VALUATIONS, ASSESSED VALUATIONS, FINAL EQUALIZED VALUE.

Cass County, Minnesota, for Taxes for the Year 1959.

Table with columns: SOLD FOR TAXES, VALUATIONS BY SCHOOL DISTRICTS AS EQUALIZED BY DEPARTMENT OF TAXATION, Tax including State Homestead, SPECIAL TAXES, TOTAL TAXES, PAID, WHEN PAID, Number of Receipt, March Settlement, June Settlement, Penalty, November Settlement, Collections to First Monday in January, Delinquent on First Monday in January, Total Delinquent Tax and Penalty, REMARKS.

Millers Point, Woodland, Des Moines Beach, Horseshoe Beach, Luroy Beach, El Sueno

Assessment Roll and Tax List of Real Property in the Town of Bowers

Indicate Type of Property: R-Residential, C-Commercial, I-Industrial, U-Utility, F-Farm, L-Lakeshore, T-Timber, M-Mineral

Table with columns: IN WHOSE NAME ASSESSED, TO WHOM TRANSFERRED, DESCRIPTION OF PROPERTY, TRUE AND FULL VALUATIONS, ASSESSED VALUATIONS, and FINAL EQUALIZED VALUE. Includes entries for D. P. Hanson, Otto L. & Eleanor S. Bekko, Geneva Bondy, and Thibout + Inez Erickson.

Cass County, Minnesota, for Taxes for the Year 1959.

Table with columns: VALUATIONS BY SCHOOL DISTRICTS AS EQUALIZED BY DEPARTMENT OF TAXATION, TAX INCLUDING STATE HOMESTEAD, STATE TAX ON NON-HOMESTEAD, SPECIAL TAXES, TOTAL TAXES, PAID, WHEN PAID, Number of Receipt, March Settlement 1960, June Settlement 1960, November Settlement 1960, Collections to First Monday in January 1961, Delinquent on First Monday in January 1961, Total Delinquent Tax and Penalty, REMARKS. Includes tax payment details for various lots.

Millers Point, Woodland, Des Moines Beach, Horseshoe Beach, Huron Beach, El Sueno

Assessment Roll and Tax List of Real Property in the Town of Powers

* Indicate Type of Property: R-Residential, C-Commercial, I-Industrial, U-Utility, F-Farm, L-Lakeshore, T-Timber, M-Mineral

Table with columns: IN WHOSE NAME ASSESSED, TO WHOM TRANSFERRED, DESCRIPTION OF PROPERTY, TRUE AND FULL VALUATIONS, ASSESSED VALUATIONS, FINAL EQUALIZED VALUE.

Cass County, Minnesota, for Taxes for the Year 1959.

Table with columns: VALUATIONS BY SCHOOL DISTRICTS AS EQUALIZED BY DEPARTMENT OF TAXATION, Tax including State Homestead, State Tax on Non-Homestead, SPECIAL TAXES, TOTAL TAXES, PAID, WHEN PAID, Number of Receipt, March Settlement 1960, June Settlement 1960, Penalty, November Settlement 1960, Collections to First Monday in January 1961, Delinquent on First Monday in January 1961, Total Delinquent Tax and Penalty, REMARKS.

Millers Point, Woodland, Des Moines Beach, Horseshoe Beach, Larry Beach, El Sueno more

Assessment Roll and Tax List of Real Property in the Town of Powers

* Indicate Type of Property: R-Residential, C-Commercial, I-Industrial, U-Utility, F-Farm, L-Lakeshore, T-Timber, M-Mineral

Form 5CD MILLER-DAVIS CO., MINNEAPOLIS

Table with columns: IN WHOSE NAME ASSESSED, TO WHOM TRANSFERRED, DESCRIPTION OF PROPERTY, TRUE AND FULL VALUATIONS, ASSESSED VALUATIONS, FINAL EQUALIZED VALUE.

Cass County, Minnesota, for Taxes for the Year 1959.

Table with columns: SOLD FOR TAXES, VALUATIONS BY SCHOOL DISTRICTS AS EQUALIZED BY DEPARTMENT OF TAXATION, Tax including State Homestead, State Tax on Non-Homestead, SPECIAL TAXES, TOTAL TAXES, PAID, WHEN PAID, Number of Receipt, March Settlement 1960, June Settlement 1960, November Settlement 1960, Collections to First Monday in January 1961, Delinquent on First Monday in January 1961, Total Delinquent Tax and Penalty, REMARKS.

Millers Point, Woodland, Des Moines Beach, Horseshoe Beach, Luroy Beach, El Sueno

Assessment Roll and Tax List of Real Property in the Town of Bowers

* Indicate Type of Property: R-Residential, C-Commercial, I-Industrial, U-Utility, F-Farm, L-Lakeshore, T-Timber, M-Mineral

Table with columns: IN WHOSE NAME ASSESSED, TO WHOM TRANSFERRED, DESCRIPTION OF PROPERTY, TRUE AND FULL VALUATIONS, ASSESSED VALUATIONS, FINAL EQUALIZED VALUE. Includes handwritten entries for Gladys Jysedal, Edwin Falk, Margaret A. Luelben, etc.

Cass County, Minnesota, for Taxes for the Year 1959.

Table with columns: SOLD FOR TAXES, VALUATIONS BY SCHOOL DISTRICTS AS EQUALIZED BY DEPARTMENT OF TAXATION, Tax including State Homestead, State Tax on Non-Homestead, SPECIAL TAXES, TOTAL TAXES, PAID, WHEN PAID, Number of Receipt, March Settlement 1960, June Settlement 1960, Penalty, November Settlement 1960, Collections to First Monday in January 1961, Delinquent on First Monday in January 1961, Total Delinquent Tax and Penalty, REMARKS. Includes handwritten entries for property 1 through 20.

Millers Point, Woodland, Des Moines Beach, Horseshoe Beach, Huron Beach, El Sueno

Assessment Roll and Tax List of Real Property in the Town of Powers

Indicate Type of Property: R-Residential, C-Commercial, I-Industrial, U-Utility, F-Farm, L-Lakeshore, T-Timber, M-Mineral

Form SCD MILLER-SAYRE COMPANY, MINNEAPOLIS

Table with columns: IN WHOSE NAME ASSESSED, TO WHOM TRANSFERRED, DESCRIPTION OF PROPERTY, TRUE AND FULL VALUATIONS, ASSESSED VALUATIONS, FINAL EQUALIZED VALUE.

Francis + Marilla Parisian Henry Edward Babst Beg. at a Pt. 32 rds. W. & 60 rds. S. of NE Cor. of Lot 1, thence W. 80' thence S. to waters edge, thence along water to 32nd line, thence W. to place of Beg.

Waldo E. Luebber Com. at NE. cor. of Lot 1, S. 65' W. 768' at Pt. of beg., thence W. 80' S. to lake thence along lake to a Pt. 768' W. of E. Line of Lot 1, thence to beg.

Cass County, Minnesota, for Taxes for the Year 1959.

Table with columns: SOLD FOR TAXES, VALUATIONS BY SCHOOL DISTRICTS AS EQUALIZED BY DEPARTMENT OF TAXATION, Tax including State Homestead, State Tax on Non-Homestead, SPECIAL TAXES, TOTAL TAXES, PAID, WHEN PAID, Number of Receipt, March Settlement 1960, June Settlement 1960, Penalty, November Settlement 1960, Collections to First Monday in January 1961, Delinquent on First Monday in January 1961, Total Delinquent Tax and Penalty, REMARKS.

5 52 1444 32 1476 5 PAID IN FULL APR 1 1960 5724 1476 9167

10 10 278 26 284 10 PAID IN FULL MAY 3 1960 6534 284 9241

62 1722 38 1760 1760

Miller Point Woodland Des Moines Beach Horseshoe Beach Luroy Beach El Sueno more

Assessment Roll and Tax List of Real Property in the Town of Bowers

Indicate Type of Property: R-Residential, C-Commercial, I-Industrial, U-Utility, F-Farm, L-Lakeshore, T-Timber, M-Mineral

Form 500 BILLS-SALE REPORT, MINNESOTA

Table with columns: IN WHOSE NAME ASSESSED, TO WHOM TRANSFERRED, DESCRIPTION OF PROPERTY, TRUE AND FULL VALUATIONS, ASSESSED VALUATIONS, FINAL EQUALIZED VALUE.

Cass County, Minnesota, for Taxes for the Year 1959.

Table with columns: VALUATIONS BY SCHOOL DISTRICTS AS EQUALIZED BY DEPARTMENT OF TAXATION, Tax including State Homestead, State Tax on Non-Homestead, SPECIAL TAXES, TOTAL TAXES, PAID, WHEN PAID, Number of Receipt, March Settlement 1960, June Settlement 1960, November Settlement 1960, Collections to First Monday in January 1961, Delinquent on First Monday in January 1961, Total Delinquent Tax and Penalty, REMARKS.

with next page

Millers Point, Woodland, Des Moines Beach, Horseshoe Beach, Luroy Beach, El Sueno

Assessment Roll and Tax List of Real Property in the Town of Powers

Form 5CD ILLINOIS DEPARTMENT OF REVENUE

Indicate Type of Property: R-Residential, C-Commercial, I-Industrial, U-Utility, F-Farm, L-Lakeshore, T-Timber, M-Mineral

Table with columns: IN WHOSE NAME ASSESSED, TO WHOM TRANSFERRED, DESCRIPTION OF PROPERTY, TRUE AND FULL VALUATIONS, ASSESSED VALUATIONS, and FINAL EQUALIZED VALUE.

Handwritten notes: Loren Arthur + Mary Borchus, E.L. Conway, Richard J. Smuda, E.L. Conway

Handwritten note: Luella A. + Howard M. Gany.

Handwritten note: Wm. Knopf.

Handwritten note: Albert C. + Yvonne E. Johnson

Handwritten note: E.L. Conway, Loren Arthur + Mary Borchus

154 12

Cass County, Minnesota, for Taxes for the Year 1959.

Table with columns: SOLD FOR TAXES, VALUATIONS BY SCHOOL DISTRICTS AS EQUALIZED BY DEPARTMENT OF TAXATION, TAX INCLUDING STATE HOMESTEAD, SPECIAL TAXES, TOTAL TAXES, PAID, WHEN PAID, Number of Receipt, March Settlement, June Settlement, November Settlement, Collections to First Monday in January, Delinquent on First Monday in January, Total Delinquent Tax and Penalty, REMARKS.

Handwritten calculations: 11 401, 17, 418, 130 + 147, 157 = 575, 4360, 10562, 14922, 90, 15012

14943

Vertical text on the right edge: Millers Point, Woodland, Des Moines Beach, Horseshoe Beach, Luroy Beach, El Sueno

Assessment Roll and Tax List of Real Property in the Town of Powers

Indicate Type of Property: R-Residential, C-Commercial, I-Industrial, U-Utility, F-Farm, L-Lakeshore, T-Timber, M-Mineral

Cass County, Minnesota, for Taxes for the Year 1959.

Form 5CD UNIFORM STATE REPORT, MINNEAPOLIS

Table with columns: IN WHOSE NAME ASSESSED, TO WHOM TRANSFERRED, DESCRIPTION OF PROPERTY, TRUE AND FULL VALUATIONS, ASSESSED VALUATIONS, VALUATIONS BY SCHOOL DISTRICTS, TAXES, PAID, WHEN PAID, etc.

Vertical text on the right edge: Millers Point, Woodland, Des Moines Beach, Horseshoe Beach, Huron Beach, El Sueño

Assessment Roll and Tax List of Real Property in the Town of Powers

Indicate Type of Property: R-Residential, C-Commercial, I-Industrial, U-Utility, F-Farm, L-Lakeshore, T-Timber, M-Mineral

Form SCD MILLER-DAVIS CO., MINNEAPOLIS

Table with columns: IN WHOSE NAME ASSESSED, TO WHOM TRANSFERRED, DESCRIPTION OF PROPERTY, TRUE AND FULL VALUATIONS, ASSESSED VALUATIONS, FINAL EQUALIZED VALUE.

Cass County, Minnesota, for Taxes for the Year 1959.

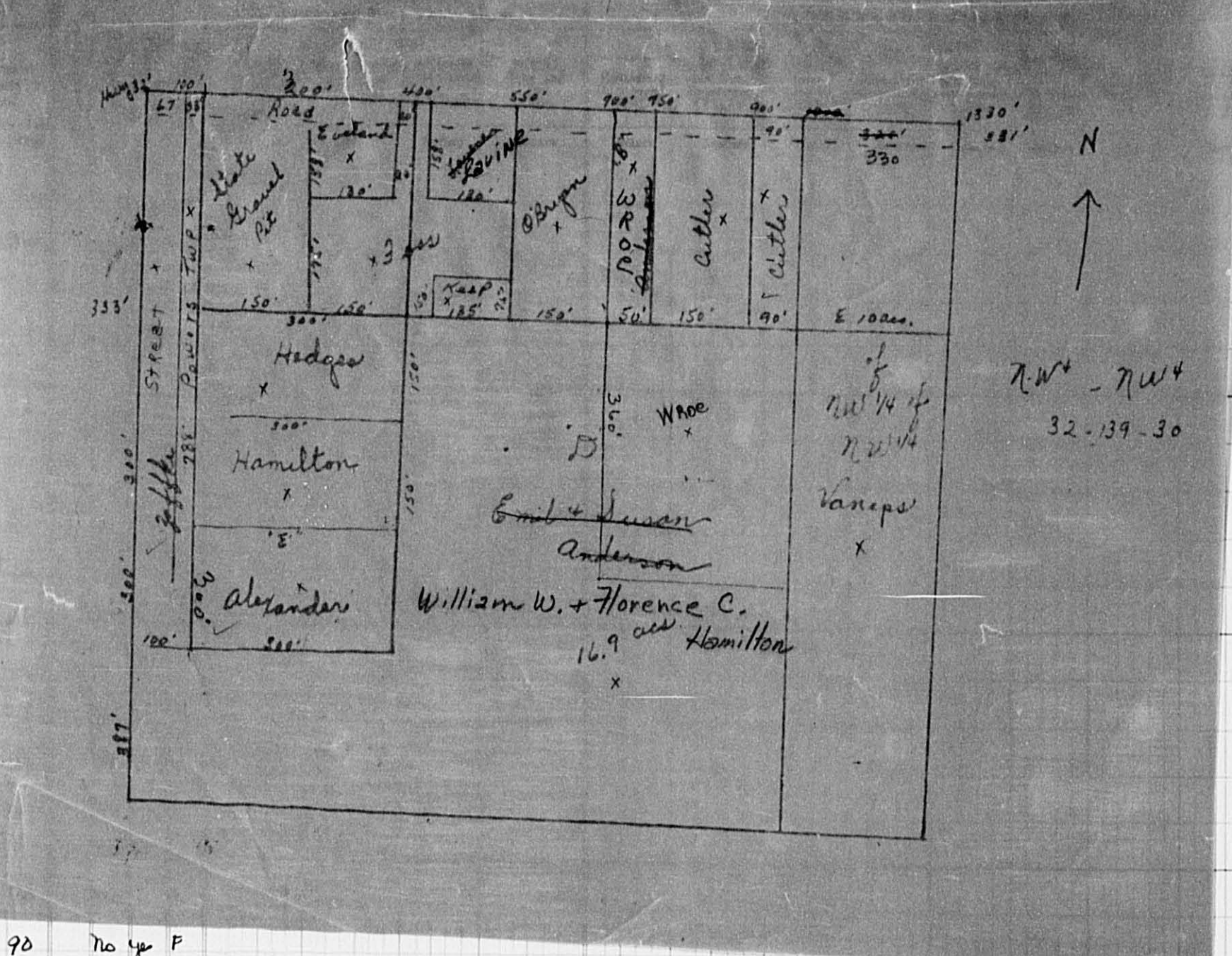
Table with columns: VALUATIONS BY SCHOOL DISTRICTS AS EQUALIZED BY DEPARTMENT OF TAXATION, TAX INCLUDING STATE HOMESTEAD, SPECIAL TAXES, TOTAL TAXES, PAID, WHEN PAID, Number of Receipt, March Settlement 1960, June Settlement 1960, November Settlement 1960, Penalty, Collections to First Monday in January 1961, Delinquent on First Monday in January 1961, Total Delinquent Tax and Penalty, REMARKS.

Vertical text on the right edge: Millers Point, Woodland, Des Moines Beach, Horseshoe Beach, Huron Beach, El Sueno more

Form SCD MILLER-DAVIS CO., MINNEAPOLIS

DESCRIPTION OF PROPERTY

IN WHOSE NAME ASSESSED	TO WHOM TRANSFERRED	SUBDIVISION	Sec. of Lot	Town of Block	Reg.	Num. of Acre
Rose E. & Dorothy E. Baker		1 NEW 1/4 NW 1/4	32	139	30	
		2 NW 1/4 NW 1/4 NW 1/4 NW 1/4				
		3 SW 1/4 NW 1/4 NW 1/4				
		4 SE 1/4 NW 1/4 NW 1/4				
Donna C. Wroe		5 Part of NW 1/4 & NW 1/4 NW 1/4 NW 1/4				
Backus Evergreen Cemetery Assn.		6 NW 1/4 NW 1/4 NW 1/4 NW 1/4				
State of Minnesota		7 NW 1/4 NW 1/4 NW 1/4 NW 1/4				
Ed & Nellie Foss		8 NW 1/4 NW 1/4 NW 1/4 NW 1/4				
Charles H. & Dorothy O. Cutler		9 NW 1/4 NW 1/4 NW 1/4 NW 1/4				
Arthur & Vera Ann		10 NW 1/4 NW 1/4 NW 1/4 NW 1/4				
Frances W. & Gladys S. Van Eps		11 NW 1/4 NW 1/4 NW 1/4 NW 1/4				
Florence C. Hamilton		12 NW 1/4 NW 1/4 NW 1/4 NW 1/4				
Horse & Edith M. Hedges		13 NW 1/4 NW 1/4 NW 1/4 NW 1/4				
Moses & Lila Zoffke (a)		14 NW 1/4 NW 1/4 NW 1/4 NW 1/4				
Donna C. Wroe (b)		15 NW 1/4 NW 1/4 NW 1/4 NW 1/4				
Chas H. & Dorothy O. Cutler (c)		16 NW 1/4 NW 1/4 NW 1/4 NW 1/4				
William W. & Florence C. Hamilton		17 NW 1/4 NW 1/4 NW 1/4 NW 1/4				
Peter & Ethel Alexander		18 NW 1/4 NW 1/4 NW 1/4 NW 1/4				
Clinton J. & Florence F. Keep		19 NW 1/4 NW 1/4 NW 1/4 NW 1/4				
Emoch B. & Marie Larris		20 NW 1/4 NW 1/4 NW 1/4 NW 1/4				



Mineral

ASSESSED BY	FINAL EQUALIZED VALUE
By rd of ew	Dollars

SOLD FOR TAXES	VALUATIONS BY SCHOOL DISTRICTS AS EQUALIZED BY DEPARTMENT OF TAXATION						Tax including State Homestead	State Tax on Non-Homestead	SPECIAL TAXES	TOTAL TAXES	PAID	WHEN PAID	Number of Receipt	March Settlement 1960	June Settlement 1960	November Settlement 1960	Penalty	Collections to First Monday in January 1961	Penalty	Delinquent on First Monday in January 1961	Total Delinquent Tax and Penalty	REMARKS	
	District No.	District No.	District No.	District No.	District No.	District No.																	
1																							
2				H 6			166			166	2	PAID IN FULL MAY 31 1960	12807		166							9158	
3																							
4																							
5																							
6																							
7																							
8				H 35			972			972	8											972	
9							8524	190		8714	9	PAID IN FULL MAY 12 1960	6797		416							15305	
10				H 15			416			416	10	PAID IN FULL MAY 12 1960	6820		506							9200	
11				H 20			506			506	11	PAID IN FULL MAY 12 1960	6820		506							9200	
12				H 51			1416			1416	12	PAID IN FULL MAR 28 1960	4458		1416							9154	
13							2360	52		2412	13	PAID IN FULL MAY 31 1960	12773		2412							15329	
14							306	06		312	14	PAID IN FULL MAY 31 1960	17303		156							9507	
15							278	06		284	15	PAID IN FULL MAY 16 1960	4959		284							9157	
16							278	06		284	16	PAID IN FULL MAY 16 1960	4959		284							9157	
17							1136	28		1164	17	PAID IN FULL MAR 28 1960	4458		1164							9128	
18							1264	32		1296	18											1296	
19				H 51			1288			1288	19	PAID IN FULL MAY 31 1960	12783		1288							9199	
20							278	06		284	20											284	
				H 71			14994			14994													
							95			433													
							166			540													
							19188			19188													
							4194	326		4520													
							19514			19514													
							7808			7808													
							11550			11550													

cont on next page

3685

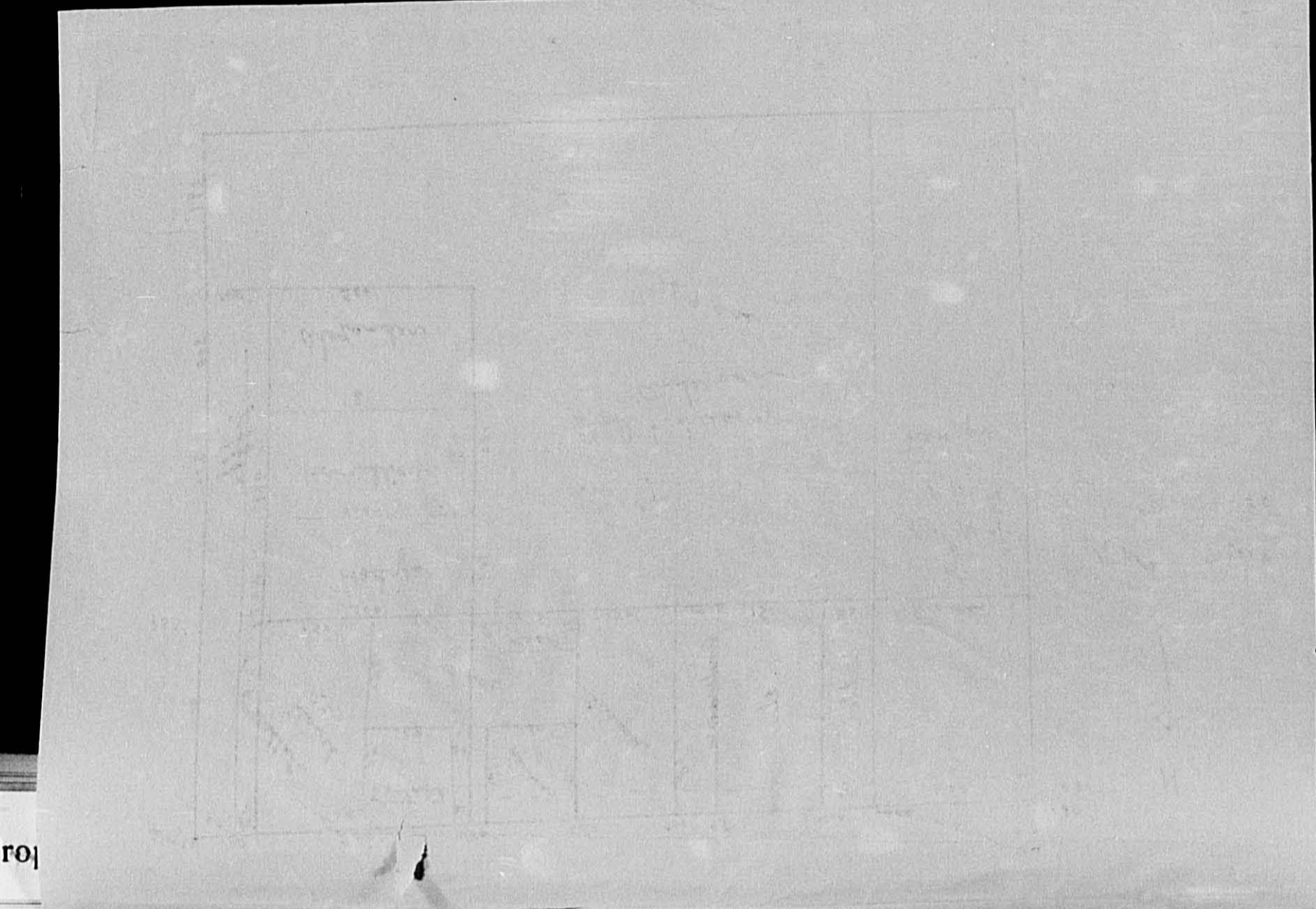
Miller Point
Woodland
Des Moines Beach
Horseshoe Beach
Luroy Beach
El Sueno more

Assessment Roll and Tax List of Real Property

Form 500 MILLER-DAVIS CO., MINNEAPOLIS

IN WHOSE NAME ASSESSED	TO WHOM TRANSFERRED	DESCRIPTION OF PROPERTY	No. School District	Indicate Homestead Yes or No	Indicate Agricultural Use Yes or No	Indicate Type of Property	TRUE AND FULL VALUATIONS				ASSESSED VALUATIONS					Total Assessed Value as Equalized by the Board of Review	FINAL EQUALIZED VALUE	
							LAND Exclusive of Structures and Improvements	BUILDINGS and Other Structures	MACHINERY Permanently Attached to Real Estate	TOTAL True and Full Value	RURAL		ALL OTHER					TOTAL ASSESSED VALUE
											Homestead Up to \$4,000 20%	Over \$4,000 and Non-Homestead 33 1/3%	Timber Land Class 3e 20%	Homestead Up to \$4,000 25%	Over \$4,000 and Non-Homestead 40%			
Rose E. & Dorothy E. Baker		1 NW 1/4 of NW 1/4 27.277 ¹ / ₂ ac	114															
Donna C. Wroe		5 Part of NW 1/4 of NW 1/4																
Barkers Evergreen Cemetery Assn.		State of Minnesota																
Olaf & Nellie Foss		8 E. 500' of W. 550' of NW 1/4 of NW 1/4																
Charles H. & Dorothy O. Cutler		9 NW 1/4 of NW 1/4																
Arthur & Vera Ann O. O'Brien		10 E. 150' of W. 700' of NW 1/4 of NW 1/4																
Frances W. & Gladys S. Van Espen		11 1/2 acres of NW 1/4 of NW 1/4																
Florence C. Hamilton		12 E. 300' of W. 400' of NW 1/4 of NW 1/4																
Horace & Edith M. Hedges		13 E. 300' of W. 400' of NW 1/4 of NW 1/4																
Moses & Lila Zaffke (a)		14 W. 100' of N. 933' of NW 1/4 of NW 1/4																
Donna C. Wroe (b)		15 E. 50' of W. 750' of NW 1/4 of NW 1/4																
Chas H. & Dorothy O. Cutler (c)		16 NW 1/4 of NW 1/4																
William W. & Florence C. Hamilton		17 70' 1000' + less E. 600' of N. 933' of W. 400'																
Peter & Ethel Alexander		18 E. 300' of N. 933' of E. 300' of W. 400' of NW 1/4 of NW 1/4																
Clinton J. & Florence J. Neyp		19 75' x 135' Part of NW 1/4 of NW 1/4																
Emoch B. & Marie Lennis		20 E. 130' of W. 550' of NW 1/4 of NW 1/4																

with on with page



Cass County, Minnesota, for Taxes for the Year 1959.

SOLD FOR TAXES	VALUATIONS BY SCHOOL DISTRICTS AS EQUALIZED BY DEPARTMENT OF TAXATION						Tax including State Homestead	State Tax on Non-Homestead	SPECIAL TAXES	TOTAL TAXES	PAID	WHEN PAID	Number of Receipt	March Settlement 1960	June Settlement 1960	Penalty 1960	November Settlement 1960	Penalty 1960	Collections to First Monday in January 1961	Penalty 1961	Delinquent on First Monday in January 1961	Total Delinquent Tax and Penalty	REMARKS
	District No.	District No.	District No.	District No.	District No.	District No.																	
	Rate	Rate	Rate	Rate	Rate	Rate																	
	District No. 114	District No. 7114	District No. 114	District No. 114	District No. 114	District No. 114																	
	Rate 1.35 Mills	Rate 1.35 Mills	Rate 1.35 Mills	Rate 1.35 Mills	Rate 1.35 Mills	Rate 1.35 Mills																	
	Dollars	Dollars	Dollars	Dollars	Dollars	Dollars	\$ cts	\$ cts	\$ cts	\$ cts	Month Day Year		\$ cts	\$ cts	\$ cts	\$ cts	\$ cts	\$ cts	\$ cts	\$ cts	\$ cts	\$ cts	
				H 6			166		166		2 PAID IN FULL	MAY 31 1960	12807		166							9158	
				H 35			972		972													972	
							8524	190	8714		9 PAID IN FULL	MAY 31 1960	12844									8714	
				H 15			416		416		10 PAID IN FULL	MAY 12 1960	6797		416							15205	
				H 20			506		506		11 PAID IN FULL	MAY 12 1960	6823		506							9200	
				H 51			1416		1416		12 PAID IN FULL	MAR 28 1960	4458		1416							9154	
							2360	52	2412		13 PAID IN FULL	MAY 31 1960	12773		2412							15329	
							306	06	312		14 PAID IN FULL	MAY 31 1960	17343		136		156					923	
							278	06	284		15 PAID IN FULL	MAY 16 1960	6759		284							9159	
							278	06	284		16 PAID IN FULL	MAY 16 1960	6759		284							9159	
							1136	28	1164		17 PAID IN FULL	MAR 28 1960	4458		1164							9128	
							1264	32	1296		18 PAID IN FULL	MAY 31 1960	12783									1296	
							1288		1288		19 PAID IN FULL	MAY 31 1960	12783		1288							9199	
							278	06	284		20 PAID IN FULL	MAY 31 1960	12783		284							284	
							4194	326	4520						7808		156					11550	
							166		166													166	

Millers Point
Woodland
Des Moines Beach
Horseshoe Beach
Curry Beach
El Sano

Assessment Roll and Tax List of Real Property in the Town of Bowers

Form SCD MILLER-DAVIS CO., MINNEAPOLIS

* Indicate Type of Property: R-Residential, C-Commercial, I-Industrial, U-Utility, F-Farm, L-Lakeshore, T-Timber, M-Mineral

Table with columns: IN WHOSE NAME ASSESSED, TO WHOM TRANSFERRED, DESCRIPTION OF PROPERTY, TRUE AND FULL VALUATIONS, ASSESSED VALUATIONS, FINAL EQUALIZED VALUE.

Cass County, Minnesota, for Taxes for the Year 1959.

Table with columns: SOLD FOR TAXES, VALUATIONS BY SCHOOL DISTRICTS AS EQUALIZED BY DEPARTMENT OF TAXATION, Tax including State Homestead, State Tax on Non-Homestead, SPECIAL TAXES, TOTAL TAXES, PAID, WHEN PAID, Number of Receipt, March Settlement, June Settlement, Penalty, November Settlement, Penalty, Collections to First Monday in January 1961, Delinquent on First Monday in January 1961, Total Delinquent Tax and Penalty, REMARKS.

Millers Point, Woodland, Des Moines Beach, Horseshoe Beach, Luroy Beach, El Sano more

Assessment Roll and Tax List of Real Property in the Town of Bowers

* Indicate Type of Property: R-Residential, C-Commercial, I-Industrial, U-Utility, F-Farm, L-Lakeshore, T-Timber, M-Mineral

Form SCD MILLER-DAVIS CO., MINNEAPOLIS

Table with columns: IN WHOSE NAME ASSESSED, TO WHOM TRANSFERRED, DESCRIPTION OF PROPERTY, TRUE AND FULL VALUATIONS, ASSESSED VALUATIONS, and FINAL EQUALIZED VALUE. Includes handwritten entries for various property owners like Life & Jessie Coffland and Robert W. & Clara E. Kunde.

461.25

Cass County, Minnesota, for Taxes for the Year 1959.

Table with columns: SOLD FOR TAXES, VALUATIONS BY SCHOOL DISTRICTS AS EQUALIZED BY DEPARTMENT OF TAXATION, SPECIAL TAXES, TOTAL TAXES, PAID, WHEN PAID, Number of Receipt, March Settlement 1960, June Settlement 1960, November Settlement 1960, Penalty, Collections to First Monday in January 1961, Delinquent on First Monday in January 1961, Total Delinquent Tax and Penalty, and REMARKS. Includes handwritten tax amounts and dates.

Handwritten summary of totals: 413, 219, 285, 1698, 6080, 37366, 798, 43446, 44244.

Vertical text on the right edge of the page: Miller's Point, Woodland, Des Moines Beach, Horseshoe Beach, Luroy Beach, El Suro more...

Assessment Roll and Tax List of Real Property in the Town of Powers

Indicate Type of Property: R-Residential, C-Commercial, I-Industrial, U-Utility, F-Farm, L-Lakeshore, T-Timber, M-Mineral

Form SCID MILLER-DAYE COMPANY, MINNEAPOLIS

Table with columns: IN WHOSE NAME ASSESSED, TO WHOM TRANSFERRED, SUBDIVISION, TRUE AND FULL VALUATIONS, ASSESSED VALUATIONS, FINAL EQUALIZED VALUE. Includes entries for Helen Snodgrass, Wm. H. + Emma V. Codner, State of Minnesota, Life + Jessie Coffland, Ada E. Miller, James + Mary Field, and Virgil J. + Grace Alexander.

Cass County, Minnesota, for Taxes for the Year 1959.

Table with columns: VALUATIONS BY SCHOOL DISTRICTS AS EQUALIZED BY DEPARTMENT OF TAXATION, SOLD FOR TAXES, SPECIAL TAXES, TOTAL TAXES, PAID, WHEN PAID, Number of Receipt, March Settlement 1960, June Settlement 1960, November Settlement 1960, Collections to First Monday in January 1961, Delinquent on First Monday in January 1961, Total Delinquent Tax and Penalty, REMARKS. Includes entries for 1st and 2nd half payments and full payments.

Vertical text on the right edge of the page: Millers Point, Woodland, Des Moines Beach, Horseshoe Beach, Luroy Beach, El Sueno more

Assessment Roll and Tax List of Real Property in the Town of Bowen

Indicate Type of Property: R-Residential, C-Commercial, I-Industrial, U-Utility, F-Farm, L-Lakeshore, T-Timber, M-Mineral

Form 50 MILLER-DAVIS CO., MINNEAPOLIS

Table with columns: IN WHOSE NAME ASSESSED, TO WHOM TRANSFERRED, SUBDIVISION, Sec. of Lot, Town or Block, Reg., Number of Acres of Land, TRUE AND FULL VALUATIONS, ASSESSED VALUATIONS, and FINAL EQUALIZED VALUE.

Frank E. + Florence W. Faulk
Victors S. + Ramona M. Davis
Richard A. + Irene M. Miller
Libby Mae Wilson
Luella + R. W. De Marco
Jay Canby
Jessie H. Lorenz
Jessie B. + Mattie B. Thompson

Cass County, Minnesota, for Taxes for the Year 1959.

Table with columns: VALUATIONS BY SCHOOL DISTRICTS AS EQUALIZED BY DEPARTMENT OF TAXATION, Tax including State Homestead, SPECIAL TAXES, TOTAL TAXES, PAID, WHEN PAID, Number of Receipt, March Settlement, June Settlement, Penalty, November Settlement, Collections to First Monday in January 1961, Delinquent on First Monday in January 1961, Total Delinquent Tax and Penalty, REMARKS.

1 PAID IN FULL MAY 12 1960
2 PAID IN FULL MAY 12 1960
3 PAID IN FULL MAY 31 1960
4 PAID IN FULL MAY 31 1960
5 PAID IN FULL MAY 10 1960
6 PAID IN FULL FEB 29 1960
7 PAID IN FULL AUG 3 1960
8 PAID IN FULL FEB 3 1960
9 PAID IN FULL MAY 12 1960
10 PAID IN FULL MAY 12 1960
11 PAID IN FULL MAY 12 1960
12 PAID IN FULL MAY 12 1960
13 PAID IN FULL MAY 12 1960
14 PAID IN FULL MAY 12 1960
15 PAID IN FULL MAY 12 1960

1 336
2 737
1063
29514 446 29960
5052 22694 2214

Assessment Roll and Tax List of Real Property in the Town of Bowers

Form 5C - MILLER-DAVIS CO., MINNEAPOLIS

Indicate Type of Property: R-Residential, C-Commercial, I-Industrial, U-Utility, F-Farm, L-Lakeshore, T-Timber, M-Mineral

Table with columns: IN WHOSE NAME ASSESSED, TO WHOM TRANSFERRED, SUBDIVISION, Sec. of Lot, Town of Block, No. of Acres of Land, No. School District, Indicate Homestead, Indicate Agricultural, Indicate Type of Property, TRUE AND FULL VALUATIONS (LAND, BUILDINGS, MACHINERY, TOTAL), ASSESSED VALUATIONS (RURAL, ALL OTHER, MACHINERY, TOTAL ASSESSED), FINAL EQUALIZED VALUE.

Millers Point Woodland

Handwritten names: Jola Falk, E. J. + Hazel A. Butzow, Glen D. + Virginia E. Leckliff, Frederick J. + Nellie Meier, Emma O. Fuller, Everett A. Reynolds, Raymond W. Peterson, E. R. Foster, Lebbie Mae Wilson

Woodland Lot 5 - Sec. 27-139-30

150 added by DR

234

Cass County, Minnesota, for Taxes for the Year 1959.

Table with columns: VALUATIONS BY SCHOOL DISTRICTS AS EQUALIZED BY DEPARTMENT OF TAXATION (District No., Rate, Mills), Tax including State Homestead, State Tax on Non-Homestead, SPECIAL TAXES, TOTAL TAXES, PAID, WHEN PAID (Month, Day, Year), Number of Receipt, March Settlement, June Settlement, Penalty, November Settlement, Collections to First Monday in January, Delinquent on First Monday in January, Total Delinquent Tax and Penalty, REMARKS.

Handwritten tax data for lots 1-13, including amounts like 568, 1988, 6642, 482, 6940, 334, 8288, 5676, 3974, 568, 2776, 6244, 7380 and payment dates like MAY 13 1960, FEB 4 1960, MAY 24 1960, JUN 3 1960, MAY 16 1960, JAN 12 1960.

Handwritten summary totals: 262, 1575, 1835

50944 978 51922 13056 28904 2838 7124

Vertical text on the right edge: Horseshoe Beach, Des Moines Beach, Horseshoe Beach, Luroy Beach, El Sueno, Amara Beach

Assessment Roll and Tax List of Real Property in the Town of Bowers

* Indicate Type of Property: R-Residential, C-Commercial, I-Industrial, U-Utility, F-Farm, L-Lakeshore, T-Timber, M-Mineral

Form 5C - MILLER-DAVIS CO., MINNEAPOLIS

DESCRIPTION OF PROPERTY

TRUE AND FULL VALUATIONS

ASSESSED VALUATIONS

Table with columns: IN WHOSE NAME ASSESSED, TO WHOM TRANSFERRED, SUBDIVISION, Sec. of Lot, Town or Block, No. of Acres, No. School District, Ind. State Homestead, Ind. Agri. Land, Ind. Type of Property, LAND, BUILDINGS, MACHINERY, TOTAL True and Full Value, RURAL, ALL OTHER, MACHINERY Permanently Attached to Real Estate, TOTAL ASSESSED VALUE, Total Assessed Value as Equalized by the Board of Review, FINAL EQUALIZED VALUE.

Cass County, Minnesota, for Taxes for the Year 1959.

Table with columns: SOLD FOR TAXES, VALUATIONS BY SCHOOL DISTRICTS AS EQUALIZED BY DEPARTMENT OF TAXATION, Tax including State Homestead, State Tax on Non-Homestead, SPECIAL TAXES, TOTAL TAXES, PAID, WHEN PAID, Number of Receipt, March Settlement, June Settlement, Penalty, November Settlement, Collections to First Monday in January 1961, Delinquent on First Monday in January 1961, Total Delinquent Tax and Penalty, REMARKS.

Millers Point, Woodland, Des Moines Beach

Handwritten notes on the right margin: Lakeshore on, El do Shores, Sanborn, Horseshoe Beach, El Sueño, Amere Pa.

Assessment Roll and Tax List of Real Property in the Town of Powers

Indicate Type of Property: R-Residential, C-Commercial, I-Industrial, U-Utility, F-Farm, L-Lakeshore, T-Timber, M-Mineral

Form 50 MILLER-DAVIS CO., MINNEAPOLIS

Table with columns: IN WHOSE NAME ASSESSED, TO WHOM TRANSFERRED, SUBDIVISION, TRUE AND FULL VALUATIONS, ASSESSED VALUATIONS, and FINAL EQUALIZED VALUE. Includes handwritten entries for Freeman E. Smith, Fred G. or Alta L. Mainis, Kenneth Damm, Ladys Coffland, John & Marie W. Spillane, and Jessie B. & Mattie Thompson.

Cass County, Minnesota, for Taxes for the Year 1959.

Table with columns: VALUATIONS BY SCHOOL DISTRICTS AS EQUALIZED BY DEPARTMENT OF TAXATION, Tax including State Homestead, State Tax on Non-Homestead, SPECIAL TAXES, TOTAL TAXES, PAID, WHEN PAID, Number of Receipt, March Settlement 1960, June Settlement 1960, Penalty, November Settlement 1960, Collections to First Monday in January 1961, Delinquent on First Monday in January 1961, Total Delinquent Tax and Penalty, and REMARKS.

Handwritten summary totals at the bottom of the tax table, including values like 6634, 148, 6782, 6442, and 340.

Vertical text on the left margin: Millers Point, Woodland, Des Moines Beach.

Vertical text on the right margin: Horseshoe Beach, El Dorado Shores, Sanborn, Horseshoe Beach, El Dorado Shores.

Assessment Roll and Tax List of Real Property in the Town of Powers

Form 5C - MILLER-DAVIS CO., MINNEAPOLIS

Indicate Type of Property: R-Residential, C-Commercial, I-Industrial, U-Utility, F-Farm, L-Lakeshore, T-Timber, M-Mineral

Cass County, Minnesota, for Taxes for the Year 1959.

Willers Point, Woodland, Des Moines Beach, Horseshoe Beach

Table with columns: IN WHOSE NAME ASSESSED, TO WHOM TRANSFERRED, SUBDIVISION, TRUE AND FULL VALUATIONS (LAND, BUILDINGS, MACHINERY, TOTAL), ASSESSED VALUATIONS (RURAL, ALL OTHER, MACHINERY, TOTAL ASSESSED), and FINAL EQUALIZED VALUE.

Table with columns: SOLD FOR TAXES, VALUATIONS BY SCHOOL DISTRICTS AS EQUALIZED BY DEPARTMENT OF TAXATION, Tax including State Homestead, State Tax on Non-Homestead, SPECIAL TAXES, TOTAL TAXES, PAID, WHEN PAID, Number of Receipt, March Settlement, June Settlement, Penalty, November Settlement, Collections to First Monday in January 1961, Delinquent on First Monday in January 1961, Total Delinquent Tax and Penalty, REMARKS.

Willers Point, Woodland, Des Moines Beach, Horseshoe Beach, Sunborn, Echo Hill, Luroy Beach, El Sueno, Emera Beach

Assessment Roll and Tax List of Real Property in the Town of Powers

Form 5C - MILLER-DAVIS CO., MINNEAPOLIS

* Indicate Type of Property: R-Residential, C-Commercial, I-Industrial, U-Utility, F-Farm, L-Lakeshore, T-Timber, M-Mineral

Hilliers Point, Woodland, Des Moines Beach, Luroy Beach, Horsehoe Beach

Table with columns: IN WHOSE NAME ASSESSED, TO WHOM TRANSFERRED, SUBDIVISION, Sec. of Lot, Town or Block, Reg., Number of Acres of Land, TRUE AND FULL VALUATIONS (LAND, BUILDINGS, MACHINERY, TOTAL), ASSESSED VALUATIONS (RURAL, ALL OTHER, MACHINERY, TOTAL ASSESSED), Total Assessed Value as Equalized by the Board of Review, FINAL EQUALIZED VALUE.

Bank of Lot 2 Dec. 11-139-30

Paul J. & Mary J. Eklund
Paul J. Eklund
C. L. La Fleur
John C. & Magdalene Steffens
M. M. Shummin

Lots 8 to 31 Inc. See Unplatted

Cass County, Minnesota, for Taxes for the Year 1959.

Table with columns: SOLD FOR TAXES, VALUATIONS BY SCHOOL DISTRICTS AS EQUALIZED BY DEPARTMENT OF TAXATION, Tax including State Homestead, State Tax on Non-Homestead, SPECIAL TAXES, TOTAL TAXES, PAID, WHEN PAID, Number of Receipt, March Settlement 1960, June Settlement 1960, Penalty, November Settlement 1960, Penalty, Collections to First Monday in January 1961, Penalty, Delinquent on First Monday in January 1961, Total Delinquent Tax and Penalty, REMARKS.

Handwritten summary totals at the bottom of the tax table.

Vertical text on the right edge of the page: Hilliers Point, Woodland, Des Moines Beach, Luroy Beach, Horsehoe Beach, Hilliers Point, Woodland, Des Moines Beach, Luroy Beach, Horsehoe Beach.

Assessment Roll and Tax List of Real Property in the Town of Bowen

Indicate Type of Property: R-Residential, C-Commercial, I-Industrial, U-Utility, F-Farm, L-Lakeshore, T-Timber, M-Mineral

Form 5C - MILLER-DAVIS CO., MINNEAPOLIS

Millers Point Woodland Des Moines Beach Des Moines Beach Horseshoe Beach Luroy Beach El Sueno

Table with columns: IN WHOSE NAME ASSESSED, TO WHOM TRANSFERRED, SUBDIVISION, Sec. of Lot, Town or Block, Rng., Number of Acres of Land, TRUE AND FULL VALUATIONS, ASSESSED VALUATIONS, TOTAL ASSESSED VALUE, Total Assessed Value as Equalized by the Board of Review, FINAL EQUALIZED VALUE.

Cass County, Minnesota, for Taxes for the Year 1959.

Table with columns: VALUATIONS BY SCHOOL DISTRICTS AS EQUALIZED BY DEPARTMENT OF TAXATION, Tax including State Homestead, State Tax on Non-Homestead, SPECIAL TAXES, TOTAL TAXES, PAID, WHEN PAID, Number of Receipt, March Settlement 1960, June Settlement 1960, Penalty, November Settlement 1960, Collections to First Monday in January 1961, Delinquent on First Monday in January 1961, Total Delinquent Tax and Penalty, REMARKS.

Vertical text on the right edge of the page, including 'Miller's Beach', 'El Sueno', 'Luroy Beach', 'Horseshoe Beach', 'Des Moines Beach', 'Woodland', 'Millers Point'.

Assessment Roll and Tax List of Real Property in the Town of Boone

* Indicate Type of Property: R-Residential, C-Commercial, I-Industrial, U-Utility, F-Farm, L-Lakeshore, T-Timber, M-Mineral

Form 50 - MILLER-DAVIS CO., MINNEAPOLIS

IN WHOSE NAME ASSESSED	TO WHOM TRANSFERRED	DESCRIPTION OF PROPERTY				TRUE AND FULL VALUATIONS											FINAL EQUALIZED VALUE
		Subdivision	Sec. of Lot	Town or Block	Number of Acres of Land	LAND Exclusive of Structures and Improvements	BUILDINGS and Other Structures	MACHINERY Permanently Attached to Real Estate	TOTAL True and Full Value	RURAL		ALL OTHER		MACHINERY Permanently Attached to Real Estate	TOTAL ASSESSED VALUE	Total Assessed Value as Equalized by the Board of Review	
										Acres	100ths	Homestead Up to \$4,000 20%	Over \$4,000 and Non-Homestead 33 1/3%				
State of Minnesota		Haaland's Lakeshore on Rainy Lake Lot 4 - Sec. 22-139-30	1														
			2														
			3														
			4														
			5														
			6														
			7														
			8														
			9														
			10														
			11														
			12														
			13														
			14														
			15														
			16														
			17														
			18														
			19														
			20														

Haaland's Lakeshore on Rainy Lake, Woodlawn Beach, Des Moines Beach, Horseshoe Beach, Lury Beach, Edmore Beach

Cass County, Minnesota, for Taxes for the Year 1959.

SOLD FOR TAXES	VALUATIONS BY SCHOOL DISTRICTS AS EQUALIZED BY DEPARTMENT OF TAXATION						Tax Including State Homestead	State Tax on Non-Homestead	SPECIAL TAXES	TOTAL TAXES	PAID	WHEN PAID	Number of Receipt	March Settlement 1960	June Settlement 1960	Penalty	November Settlement 1960	Penalty	Collections to First Monday in January 1961	Penalty	Delinquent on First Monday in January 1961	Total Delinquent Tax and Penalty	REMARKS
	District No.	District No.	District No.	District No.	District No.	District No.																	
	Rate	Rate	Rate	Rate	Rate	Rate																	
1																							
2																							
3																							
4																							
5																							
6																							
7																							
8																							
9																							
10																							
11																							
12																							
13																							
14																							
15																							
16																							
17																							
18																							
19																							
20																							

Hogart's Birch, Wood Acres, Edmore Beach, Sandborn, Edmore Beach, Edmore Hill Division, Vincent's & John's Shores

Assessment Roll and Tax List of Real Property in the Town of Powers

* Indicate Type of Property: R-Residential, C-Commercial, I-Industrial, U-Utility, F-Farm, L-Lakeshore, T-Timber, M-Mineral

Form 50 MILLER-DAVIS CO., MINNEAPOLIS

Table with columns: IN WHOSE NAME ASSESSED, TO WHOM TRANSFERRED, DESCRIPTION OF PROPERTY, TRUE AND FULL VALUATIONS, ASSESSED VALUATIONS, and FINAL EQUALIZED VALUE. Includes handwritten entries for Elido Shore and various property owners like Floyd L. & Cheata W. Smith.

Cass County, Minnesota, for Taxes for the Year 1959.

Table with columns: SOLD FOR TAXES, VALUATIONS BY SCHOOL DISTRICTS AS EQUALIZED BY DEPARTMENT OF TAXATION, SPECIAL TAXES, TOTAL TAXES, PAID, WHEN PAID, Number of Receipt, March Settlement, June Settlement, November Settlement, Collections to First Monday in January 1961, Delinquent on First Monday in January 1961, Total Delinquent Tax and Penalty, and REMARKS. Includes handwritten tax amounts and payment dates.

Vertical text on the left edge of the page listing various beach names: Haaland's Lakeshore, Elido Shores, Des Moines Beach, Luroy Beach, Horseshoe Beach, Lummere Beach.

Vertical text on the right edge of the page listing various shore names: Harport's Birchwood Acres, Plat of Vin Oxley Shore, Sanborn, Echo Hill Division, Vincent's 4 Point Shores.

Assessment Roll and Tax List of Real Property in the Town of Powers

Form 5C - MILLER-DAVIS CO., MINNEAPOLIS

Indicate Type of Property: R-Residential, C-Commercial, I-Industrial, U-Utility, F-Farm, L-Lakeshore, T-Timber, M-Mineral

Table with columns: IN WHOSE NAME ASSESSED, TO WHOM TRANSFERRED, DESCRIPTION OF PROPERTY, TRUE AND FULL VALUATIONS, ASSESSED VALUATIONS, FINAL EQUALIZED VALUE.

Healens Lakeshore, On Rainy Lake, Eldo Shores, Sanborn Heights, Luroy Beach, Lamesere Beach

Cass County, Minnesota, for Taxes for the Year 1959.

Table with columns: VALUATIONS BY SCHOOL DISTRICTS AS EQUALIZED BY DEPARTMENT OF TAXATION, Tax including State Homestead, State Tax on Non-Homestead, SPECIAL TAXES, TOTAL TAXES, PAID, WHEN PAID, Number of Receipt, March Settlement 1960, June Settlement 1960, Penalty, November Settlement 1960, Penalty, Collections to First Monday in January 1961, Penalty, Delinquent on First Monday in January 1961, Total Delinquent Tax and Penalty, REMARKS.

Healens Lakeshore, Eldo Shores, Sanborn Heights, Luroy Beach, Lamesere Beach, Vincent's Shores, Echo Hill Division, Vincent's Shores

Assessment Roll and Tax List of Real Property in the Town of Powers

* Indicate Type of Property: R-Residential, C-Commercial, I-Industrial, U-Utility, F-Farm, L-Lakeshore, T-Timber, M-Mineral

Form 5C - MILLER-DAVIS CO., MINNEAPOLIS

Table with columns: IN WHOSE NAME ASSESSED, TO WHOM TRANSFERRED, SUBDIVISION, Sec. or Lot, Town or Block, Reg., Number of Acres of Land, No. School District, Indicate Homestead, Indicate Agricultural, Indicate Type of Property, TRUE AND FULL VALUATIONS (LAND, BUILDINGS, MACHINERY, TOTAL), ASSESSED VALUATIONS (RURAL, ALL OTHER, MACHINERY, TOTAL ASSESSED VALUE), Total Assessed Value as Equalized by the Board of Review, FINAL EQUALIZED VALUE.

Cass County, Minnesota, for Taxes for the Year 1959.

Table with columns: SOLD FOR TAXES, VALUATIONS BY SCHOOL DISTRICTS AS EQUALIZED BY DEPARTMENT OF TAXATION, Tax including State Homestead, State Tax on Non-Homestead, SPECIAL TAXES, TOTAL TAXES, PAID, WHEN PAID, Number of Receipt, March Settlement 1960, June Settlement 1960, November Settlement 1960, Collections to First Monday in January 1961, Delinquent on First Monday in January 1961, Total Delinquent Tax and Penalty, REMARKS.

Haaland's Lakeshore, On Rainy Lake, Aldo Shores, Dec Marine Beach, Sandborn Heights, Echo Hill, Lurcy Beach, Idemere Beach

Woods Acres, Vincent's, Vincent's Sub-Division, Vincent's 4 Point Shores

Assessment Roll and Tax List of Real Property in the Town of Powers

* Indicate Type of Property: R-Residential, C-Commercial, I-Industrial, U-Utility, F-Farm, L-Lakeshore, T-Timber, M-Mineral

Form 50 MILLER-DAVIS CO., MINNEAPOLIS

Healds Lakeshore, On Rainy Lake, Aldo Shores, Eldo Shores, Sanborn Heights, Echo Hill, Gillespie's Sub-Division, Idemere Beach

Table with columns: IN WHOSE NAME ASSESSED, TO WHOM TRANSFERRED, DESCRIPTION OF PROPERTY, TRUE AND FULL VALUATIONS, ASSESSED VALUATIONS, and FINAL EQUALIZED VALUE. Includes handwritten entries for properties in Gillespie's Sub-div.

Cass County, Minnesota, for Taxes for the Year 1959.

Table with columns: VALUATIONS BY SCHOOL DISTRICTS AS EQUALIZED BY DEPARTMENT OF TAXATION, TAXES, PAID, WHEN PAID, Number of Receipt, March Settlement 1960, June Settlement 1960, November Settlement 1960, Collections to First Monday in January 1961, Delinquent on First Monday in January 1961, Total Delinquent Tax and Penalty, REMARKS.

Healds Lakeshore, Aldo Shores, Eldo Shores, Sanborn Heights, Echo Hill, Gillespie's Sub-Division, Idemere Beach, Vincent's Point Shores

Assessment Roll and Tax List of Real Property in the Town of Iowa

* Indicate Type of Property: R-Residential, C-Commercial, I-Industrial, U-Utility, F-Farm, L-Lakeshore, T-Timber, M-Mineral

Form 50 MILLER-DAVIS CO., MINNEAPOLIS

Table with columns: IN WHOSE NAME ASSESSED, TO WHOM TRANSFERRED, DESCRIPTION OF PROPERTY, TRUE AND FULL VALUATIONS, ASSESSED VALUATIONS, FINAL EQUALIZED VALUE.

Cass County, Minnesota, for Taxes for the Year 1959.

Table with columns: SOLD FOR TAXES, VALUATIONS BY SCHOOL DISTRICTS AS EQUALIZED BY DEPARTMENT OF TAXATION, Tax including State Homestead, SPECIAL TAXES, TOTAL TAXES, PAID, WHEN PAID, Number of Receipt, March Settlement 1960, June Settlement 1960, November Settlement 1960, Collections to First Monday in January 1961, Delinquent on First Monday in January 1961, Total Delinquent Tax and Penalty, REMARKS.

Vertical text on the left margin: Highlands Lakeshore, Eager's Birchwood Acres, Aldo Shores, Heights, Echo Hill, Division, Point Shores, Vincent's Oxide Shores, Hardwood Point.

Vertical text on the right margin: Vincent's Oxide Shores, Hardwood Point.

Assessment Roll and Tax List of Real Property in the Town of Powers

* Indicate Type of Property: R-Residential, C-Commercial, I-Industrial, U-Utility, F-Farm, L-Lakeshore, T-Timber, M-Mineral

Form 5C - MILLER-DAVIS CO., MINNEAPOLIS

Table with columns: IN WHOSE NAME ASSESSED, TO WHOM TRANSFERRED, SUBDIVISION, DESCRIPTION OF PROPERTY, TRUE AND FULL VALUATIONS, ASSESSED VALUATIONS, TOTAL ASSESSED VALUE, and FINAL EQUALIZED VALUE.

Ernest C. & Anna Sundlinger
Laurence & Lois Mae Bengewski
LaVene & Martha L. Vincent
W. N. Sobes
LaVene & Martha L. Vincent
Walter J. or Elsie M. Thorndike

Cass County, Minnesota, for Taxes for the Year 1959.

Table with columns: SOLD FOR TAXES, VALUATIONS BY SCHOOL DISTRICTS AS EQUALIZED BY DEPARTMENT OF TAXATION, Tax including State Homestead, State Tax on Non-Homestead, SPECIAL TAXES, TOTAL TAXES, PAID, WHEN PAID, Number of Receipt, March Settlement 1960, June Settlement 1960, Penalty, November Settlement 1960, Collections to First Monday in January 1961, Delinquent on First Monday in January 1961, Total Delinquent Tax and Penalty, REMARKS.

Handwritten summary totals at the bottom of the tax table.

Assessment Roll and Tax List of Real Property in the Town of Powers

Indicate Type of Property: R-Residential, C-Commercial, I-Industrial, U-Utility, F-Farm, L-Lakeshore, T-Timber, M-Mineral

Form 5C - MILLER-DAVIS CO., MINNEAPOLIS

Vertical text on the left edge: Highland Lakeshore, Enger's Birchwood Acres, Plat of Vincent's 4 Poles Sub Division, Hardwood Point, Vincent's 4 Poles Shores

Table with columns: IN WHOSE NAME ASSESSED, TO WHOM TRANSFERRED, SUBDIVISION, Sec. of Lot, Town of Block, Rng., Number of Acres of Land, TRUE AND FULL VALUATIONS (LAND, BUILDINGS, MACHINERY, TOTAL), ASSESSED VALUATIONS (RURAL, ALL OTHER, MACHINERY, TOTAL ASSESSED), Total Assessed Value, FINAL EQUALIZED VALUE.

Handwritten entries: Eugene Walter + Donna C. Wroe, Robert A. & Lois E. Christman

Handwritten note: Starwood Point East of East Lot 6, Sec 28

Cass County, Minnesota, for Taxes for the Year 1959.

Table with columns: SOLD FOR TAXES, VALUATIONS BY SCHOOL DISTRICTS AS EQUALIZED BY DEPARTMENT OF TAXATION (District No., Rate, Mills), Tax including State Homestead, State Tax on Non-Homestead, SPECIAL TAXES, TOTAL TAXES, PAID, WHEN PAID, Number of Receipt, March Settlement 1960, June Settlement 1960, November Settlement 1960, Collections to First Monday in January 1961, Delinquent on First Monday in January 1961, Total Delinquent Tax and Penalty, REMARKS.

Assessment Roll and Tax List of Real Property in the Town of Powers, Minnesota

* Indicate Type of Property: R-Residential, C-Commercial, I-Industrial, U-Utility, F-Farm, L-Lakeshore, T-Timber, M-Mineral

Form 50 MILLER-DAVIS CO., MINNEAPOLIS

Table with columns: IN WHOSE NAME ASSESSED, TO WHOM TRANSFERRED, DESCRIPTION OF PROPERTY, TRUE AND FULL VALUATIONS, ASSESSED VALUATIONS, FINAL EQUALIZED VALUE.

Main data table with 20 rows. Includes handwritten entries for 'Northern States' and 'Grand Total'.

Cass County, Minnesota, for Taxes for the Year 1959.

Table with columns: VALUATIONS BY SCHOOL DISTRICTS AS EQUALIZED BY DEPARTMENT OF TAXATION, Tax including State Homestead, State Tax on Non-Homestead, SPECIAL TAXES, TOTAL TAXES, PAID, WHEN PAID, Number of Receipt, March Settlement 1960, June Settlement 1960, Penalty, November Settlement 1960, Penalty, Collections to First Monday in January 1961, Penalty, Delinquent on First Monday in January 1961, Total Delinquent Tax and Penalty, REMARKS.

Vertical text on the left edge of the page: Harlands Lakeshore, on Enger's Birchwood Acres, Plat of Vincents Division, Echo Hill, Hardwood Point, Vincents 4 Point Shores.

Assessment Roll and Tax List of Real Property in the _____ of _____

Form 5C MILLER-DAVIS CO., MINNEAPOLIS

* Indicate Type of Property: R-Residential, C-Commercial, I-Industrial, U-Utility, F-Farm, L-Lakeshore, T-Timber, M-Mineral

IN WHOSE NAME ASSESSED	TO WHOM TRANSFERRED	DESCRIPTION OF PROPERTY				No. School District	Indicate Homestead Tax or No	Indicate Agricultural Tax or No	Indicate Type of Property	TRUE AND FULL VALUATIONS				ASSESSED VALUATIONS						FINAL EQUALIZED VALUE		
		SUBDIVISION	Sec. of Lot	Town or Block	Rng.					Number of Acres of Land	LAND Exclusive of Structures and Improvements	BUILDINGS and Other Structures	MACHINERY Permanently Attached to Real Estate	TOTAL True and Full Value	RURAL		ALL OTHER		MACHINERY Permanently Attached to Real Estate		TOTAL ASSESSED VALUE	Total Assessed Value as Equalized by the Board of Review
															Acres	100ths	Homestead Up to \$4,000 20%	Over \$4,000 and Non-Homestead 33 1/8%				
										Dollars	Dollars	Dollars	Dollars	Dollars	Dollars	Dollars	Dollars	Dollars	Dollars	Dollars		

W. W. Johnson, Inc.
W. W. Johnson, 4 E. Palmer Street, Duluth, Minn.

Outlet A
B
C
D
E

Cass County, Minnesota, for Taxes for the Year 1959.

SOLD FOR TAXES	VALIDATIONS BY SCHOOL DISTRICTS AS EQUALIZED BY DEPARTMENT OF TAXATION						Tax including State Homestead	State Tax on Non-Homestead	SPECIAL TAXES	TOTAL TAXES	PAID	WHEN PAID	Number of Receipt	March Settlement 1960	June Settlement 1960	Penalty	November Settlement 1960	Penalty	Collections to First Monday in January 1961	Penalty	Delinquent on First Monday in January 1961	Total Delinquent Tax and Penalty	REMARKS						
	District No.	District No.	District No.	District No.	District No.	District No.																		Rate	Rate	Rate	Rate	Rate	Rate
	Rate	Rate	Rate	Rate	Rate	Rate																		Mills	Mills	Mills	Mills	Mills	Mills

Hardwood Point
 Vincent's 4 Pol Shores
 School Hill
 Plat of Vincent's
 Wood Acres
 Enger's Birch-wood Acres