

ASSESSMENT & TAX LIST

Powers

1953

NAME OF OWNER

TABULAR SCHEDULE OF VALUATIONS,

LEVIED IN THE Town OF Powers

RATES AND TAXES

COUNTY OF CASS, STATE OF MINNESOTA

227.39
4.66
732.05

228.19
4.66
732.85

School District No.	VALUATION BY SCHOOL DISTRICTS				RATE OF STATE TAXES		RATE OF COUNTY TAXES						RATE OF TOWN TAXES						RATE OF		SCHOOL TAXES		TAXES LEVIED									
	Agri-cultural Lands	Non-Agri-cultural Lands	Personal Property	Total Value of all Property except Money and Credits	Total Rate of State Tax	Total Rate of County Tax	Rev.	R. & B.	Welfare	Bonds and Int.	A.S.B. Sinking	Total Rate of County Tax	Rev.	R. & B.	Drag Tax	State Loan	Phone	Total Rate of Town Tax	Local	Special	State Loan	Deficiency	Tuition	Transportation	Local 1 Mill	Special	State Loan	Def. Transp. C.O.	Total School Taxes	ALL OTHER TAXES		
Dollars	Dollars	Dollars	Dollars	Mills	Mills	Mills	Mills	Mills	Mills	Mills	Mills	Mills	Mills	Mills	Mills	Mills	Mills	Mills	Mills	Mills	Mills	Mills	Mills	Mills	Mills	Mills	Mills	Mills	Mills	Rate	Amounts	
#30	30483	11921	4817	47221	H. 5.28	28.3	15.9	50.5	10.69	2.	107.41	4.95	8	1.		5.	16.7	1.	25.		70.8		2.									
Un	5738	2094	6021	13853																												
	36221	14015	10838	61074																												
					N. H. 4.66																											
					9.94																											
Assessed Value Homestead	Rural 19257	All Other 535	Personal Property	Total 19792																												
Non-Homestead	26380	4064	10838	41282																												
Total	45637	4599	10838	61074																												

LOCAL 1 MILL AND SPECIAL SCHOOL TAXES BY DISTRICTS										ALL OTHER TAXES	
Local 1 Mill	Special	State Loan	Def. Transp. C.O.	Total School Taxes	FUNDS	Rate	Amounts				
98.8	228.19	3048	76208	215820	6097		301173	State - Non-Homestead,	19256		
123.8	253.19	1674	83690	118505	3348		207217	State - Homestead,	32245		
78.	207.39	574	11476	22952	1148		44757	County Revenue,	172839		
98.	227.39	811	32460	32460	1623	8607	79527	County Road and Bridge,	97108		
								County Welfare,	308046		
								Bonds and Interest	65288		
								P. & B. Sinking	12215		
									655996		
								Town Revenue,	29926		
								Town Road and Bridge,	35423		
								Town Drag,	6107		
								Town State Loan,			
								Phone	30537		
									101993		
								School Local 1 Mill,	6107		
								School Special,	203834		
								School State Loan,			
								Deficiency	389737		
								Tuition			
								Transportation	12216		
								C. O.	20780		
									632674		

Total Number of Acres 12,611.57

Total Levy, \$ 14,421.64

I, L. C. Peterson, Auditor of said County and State aforesaid, do hereby certify that the foregoing is a true and correct Schedule, showing the valuation of all the taxable property, in the town of Powers, in said County, the several rates of Taxation and Totals of the several Tax Funds levied thereon for the year A. D. 1933.

Witness my hand and official seal, this 7th day of December, A. D. 1933.

L. C. Peterson County Auditor.
By Walter Wilson, Deputy

Total Taxes Real Estate 11,782.38
Pers. Prop. 2,639.26
Total 14,421.64

SEAL

Assessment of 1

COLLECTIONS OF TAXES OF 1953

Town

OF *Powers*

CASS COUNTY, MINNESOTA

FUNDS	MARCH SETTLEMENT 1953	JUNE SETTLEMENT 1953	NOV. SETTLEMENT 1953	Amount Collected from Nov. 1952 to First Monday in Jan. 1953	REDUCTIONS	Total Reductions and Collected	BALANCE UNCOLLECTED	ADDITIONS	Total Uncollected to First Monday in January, 1953
State—Non-Homestead, State—Homestead,	4495 3858	9560 16311	3087 6709	622 771					
County Revenue, County Road and Bridge, County Welfare, County Bond and Interest, <i>R. & O. sinking</i>	24094 13537 43012 9101 1703	87426 47119 156069 53024 6178	35957 20202 64189 13582 2541	916 515 1636 346 65					
Town Revenue, Town Road and Bridge, Town Drag, Town State Loan, <i>Telephone</i>	4172 4938 151 4257	15137 17919 3089 15446	6226 7369 1271 6353	158 188 32 162					
School Local 1 Mill, School Special, School State Loan, Deficiency Tuition Transportation C. O.	857 37146 50268 1703 4875	3089 100668 203483 6178 9420	1270 39993 81070 2541 4327	32 917 2292 65					
	208861	730115	296647	7617					

	SCHOOL DISTRICT NO.	LOCAL 1 MILL	SPECIAL	STATE LOAN	Deficiency	Transport.	C. O.	TOTALS
MARCH SETTLEMENT	<i>A Un</i>	09	176		362	18	132	687
	<i>Na Un</i>	316	12648		12648	632	4743	30987
	<i>A #30</i>	88	1799		5662	160		7901
	<i>Na #30</i>	446	22323		31606	893		55268
Totals		851	37146		50268	1703	4875	94843
JUNE SETTLEMENT	<i>A Un</i>	315	6308		12617	631	4731	24602
	<i>Na Un</i>	179	7172		7170	359	2689	17569
	<i>A #30</i>	1702	42541		120475	3403		168121
	<i>Na #30</i>	893	44647		63221	1785		110546
Totals		3089	100668		203483	6178	7420	320938
NOVEMBER SETTLEMENT	<i>A #30</i>	710	17747		50260	1420		70137
	<i>Na #30</i>	272	13609		19270	544		33695
	<i>A Un</i>	145	2906		5811	291	2179	11332
	<i>Na Un</i>	143	5731		5729	296	2148	14037
Totals		1270	39993		81070	2541	4327	129201
NOVEMBER to JANUARY	<i>A #30</i>	28	702		1988	56		2774
	<i>Na #30</i>	84	215		304	09		532
Totals		32	917		2292	65		3306
ADDITIONS	School District No.							
Totals								
REDUCTIONS	School District No.							
Totals								

Miller's Point
Woodland
Pos. Johns Beach
El Horseshoe Beach
Luroy Beach
El Steno

Assessment Roll and Tax List of Real Property in the Town of Towers

Cass County, Minnesota, for Taxes for the Year 1953.

IN WHOSE NAME ASSESSED	TO WHOM TRANSFERRED	DESCRIPTION OF PROPERTY				TRUE AND FULL VALUATIONS											FINAL EQUALIZED VALUE
		SUBDIVISION	Sec. or Lot	Town or Block	Number of Acres of Land	LAND Exclusive of Structures and Improvements	BUILDINGS and Other Structures	MACHINERY Permanently Attached to Real Estate	TOTAL True and Full Value	RURAL		ALL OTHER		MACHINERY Permanently Attached to Real Estate 33 1/3 %	TOTAL ASSESSED VALUE	Total Assessed Value as Equalized by the Board of Review	
										Acres	100ths	Homestead Up to \$4,000 20%	Over \$4,000 and Non-Homestead 33 1/3 %				
Ralph P. Bundy Dm. H. Ralston		NE 1/4 of NE 1/4		9 13 30	32												
State of Minnesota		NW 1/4 of NE 1/4			40												
Otto Kaste		SE 1/4 of NE 1/4			40												
Chester C. & Agnes M. Curney		E. 16 rods of NW 1/4 of NW 1/4			8												
Dm. H. Ralston		NE 1/4 of NW 1/4			40												
William Russell		NW 1/4 of NW 1/4			40												
Dm. F. Russell		SW 1/4 of NW 1/4			40												
Dm. & Lila Russell		SE 1/4 of NW 1/4			40												
H. Lee Mack		NE 1/4 of SW 1/4			40												
"		NW 1/4 of SW 1/4			40												
Arvid & Lorraine Anderson		SW 1/4 of SW 1/4			40												
"		SE 1/4 of SW 1/4			40												
William C. & Norma Lee Owen		NE 1/4 of SE 1/4 Lot 1			50												
"		NW 1/4 of SE 1/4			40												
"		SW 1/4 of SE 1/4 Lot 2			38 60												
State of Minnesota		SE 1/4 of SE 1/4 Lot 3															

56660

SOLD FOR TAXES	VALUATIONS BY SCHOOL DISTRICTS AS EQUALIZED BY DEPARTMENT OF TAXATION						Tax including State Homestead	State Tax on Non-Homestead	SPECIAL TAXES	TOTAL TAXES	PAID	WHEN PAID	Number of Receipt	March Settlement 1954	June Settlement 1954	Penalty	November Settlement 1954	Penalty	Collections to First Monday in January 1955	Penalty	Delinquent on First Monday in January 1955	Total Delinquent Tax and Penalty	REMARKS	
	District No.	District No.	District No.	District No.	District No.	District No.																		
	Rate	Rate	Rate	Rate	Rate	Rate																		
1																								
2																								
3																								
4																								
5																								
6																								
7																								
8																								
9																								
10																								
11																								
12																								
13																								
14																								
15																								
16																								
17																								
18																								
19																								
20																								

753
277
1030

23504 130

23634

9334

1326

12974

Miller's Point
Woodland
Pgs. Johns Beach
Horseshoe Beach
Leroy Beach
El Sueno

Assessment Roll and Tax List of Real Property in the Town of Powers

Table with columns: IN WHOSE NAME ASSESSED, TO WHOM TRANSFERRED, DESCRIPTION OF PROPERTY, TRUE AND FULL VALUATIONS, ASSESSED VALUATIONS, FINAL EQUALIZED VALUE. Includes handwritten entries for various lots and owners.

259.00

Cass County, Minnesota, for Taxes for the Year 1953.

Table with columns: SOLD FOR TAXES, VALUATIONS BY SCHOOL DISTRICTS AS EQUALIZED BY DEPARTMENT OF TAXATION, SPECIAL TAXES, TOTAL TAXES, PAID, WHEN PAID, Number of Receipt, March Settlement 1954, June Settlement 1954, Penalty, November Settlement 1954, Penalty, Collections to First Monday in January 1955, Delinquent on First Monday in January 1955, Total Delinquent Tax and Penalty, REMARKS. Includes handwritten entries for various lots and owners.

1000

202.40 4.70

212.10

13.616

759.4

Miller's Point, Woodland, Gos. Johns Beach, Horseshoe Beach, Larry Beach, El Sueno



Govt Lot 4
23-139-30
21.65acs.

Lot 2

Lot 3

Smith

LAKE

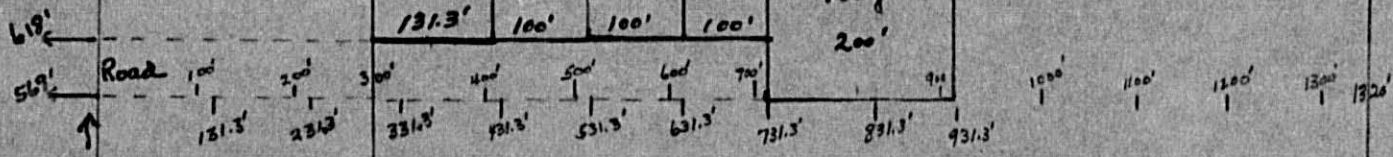
BRAUN

Lippka
Pri. Cont.
TO
BRAUN

Bobbitt
High School

Rollins

Frey
200'



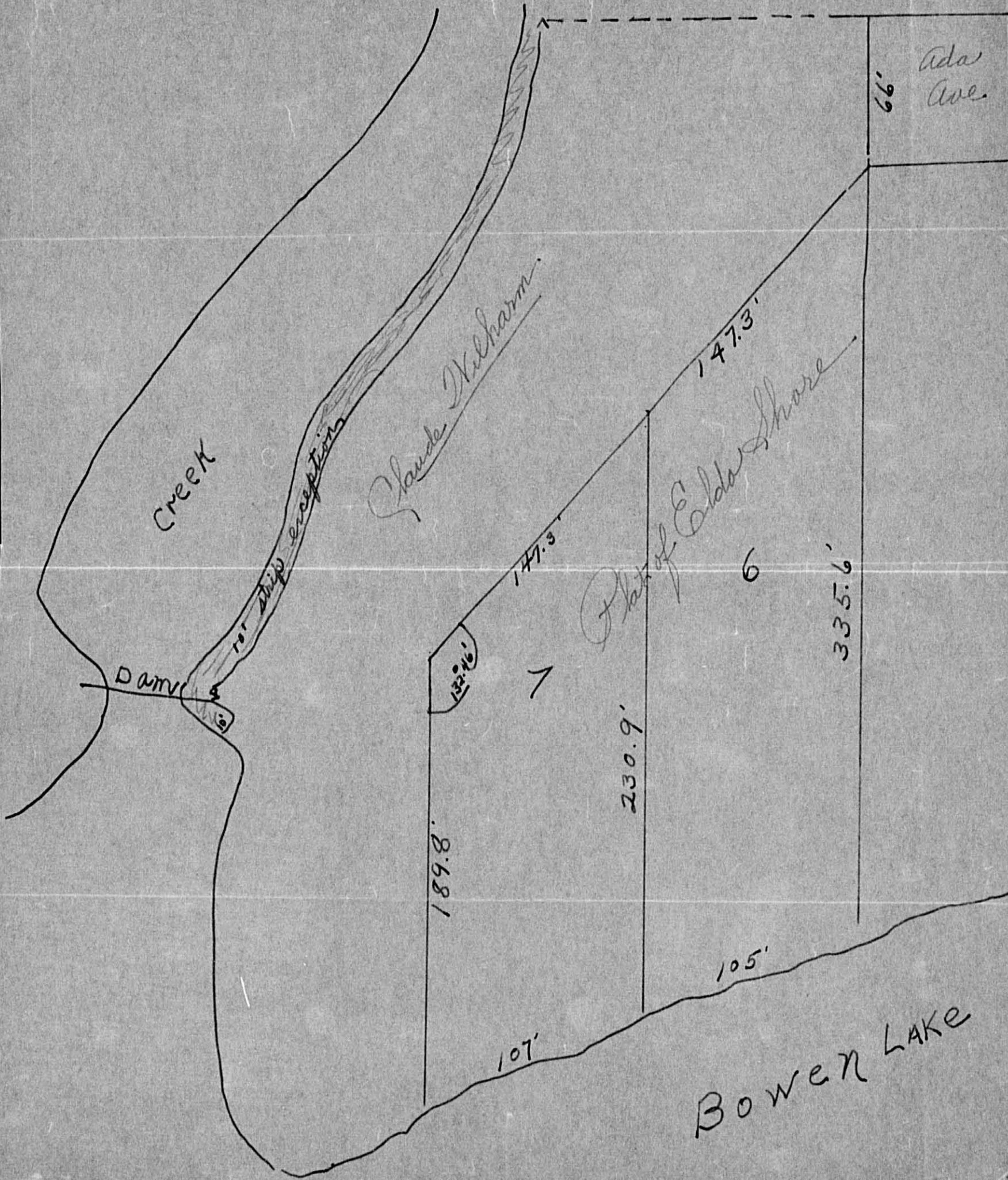
SMITH

Lippka

300'

new map
7-10-65

Part of Lot 1 - 32-139-30



Creek

Dam

Ada Ave.

Claude McHarm

Flat of Elder Shore

BOWEN LAKE

132.46'

189.8'

107'

230.9'

105'

147.3'

147.3'

335.6'

66'

6

