

ASSESSMENT & TAX LIST

Powers

1948

Lot 3
Fred Polman E 1/2 of Lots 4 & 5 -
Sec 2 Twp 139 - 30 should be Homestead

Amelia Moorey Lot 2 Sec 3 - 139 - 30
should be homestead

Chas. P. & Marie Benalkin \$244 Trimmer Bay
Long Beach Calif.

60% a. Section 3, starting at N.W. corner
for 10 E. on N. Line 500 ft. S. 160 ft then
due W. 150 ft. to shore of Picher Lake.
should not be homestead.

Paul Stehr ^{Town} 24 - NE. of N.E.
Buildings too low
suggest \$500 as valuation

Lydal Toplin - Section 4 - S.W. of N.E.
Valued too high at \$625 - to \$475

Geo. Kahl - S.E. of N.W. Sec. 5.
Raised from \$150 to \$250.

Lee W. & Evelyn J. Hilderbrand N.E. & N.E. Sec 29
from \$355 to \$455 (Buildings)

Caron Jaffke NW & SW Sec. 29 from \$420 to \$620
Buildings

A. H. & Mennie Johnson S.E. of N.W.

✓ Sect. 29

Raised from \$1.85 to \$2.85

Paul & Luella Miller

✓ N.W. of S.E. Sect. 29

(Billie Jean Hance) Raised from

\$360 to \$425

✓ P. L. Curry N.E. of N.E. Section 30

Raised from \$425 to \$500

SUMMARY OF TAX COLLECTION

Original Levy	- - - - -	\$10,553.76
Additions	- - - - -	\$ 627.6
Cancellations	- - - - -	\$ 142.46
Abatements	- - - - -	\$ 123.40
		<u>\$10,350.36</u>
COLLECTIONS		
March Settlement	- - - - -	\$4,575.80
June Settlement	- - - - -	\$4,682.86
November Settlement	- - - - -	\$2,789.58
January Settlement	- - - - -	\$ 209.06
		<u>\$10,350.36</u>
Over Collected	- - - - -	\$ 53.36
Under Collected	- - - - -	\$
Delinquent	- - - - -	\$1146.42
Total	- - - - -	<u>\$10,350.36</u>

Miller's Point
 Woodland
 Des Moines Beach
 Horseshoe Beach
 Luray Bay
 El Sueno

REAL

Treasurer's Office, Cass County, Minnesota

RECEIVED this, the first Monday (being the 3rd day) of January, A. D. 1949, of L. G. Peterson, Auditor of said County, Minnesota, the Tax List of all Taxable Real and Personal Property in the Town of Power in said County for the year A. D. 1948, as specified above and amounting to _____ Dollars

Paul D. Jewell
County Treasurer

Auditor's Office, Cass County, Minnesota

I, _____ Auditor of said County, and State of Minnesota, do hereby certify that the following is a correct list of the Taxes levied on the Real and Personal Property in the _____ of _____ for the year 1948.

WITNESS my hand and official seal, the _____ day of _____ 1949.

(SEAL) _____ County Auditor.

Office of County Treasurer, Cass County, Minnesota

To L. G. Peterson, County Auditor:

Str: I herewith return to you the Tax List for the Town of Power in said County for the year 1948, heretofore received from you. I certify that I have compared the same with the duplicate receipts in your office, and have written opposite the amount of each tax so receipted the words "First Quarter Paid", "Second Quarter Paid", "Third Quarter Paid" or "Paid in full" as the case may be, and the number of my receipt given in discharge of said tax, and each tract or lot of real property against which the taxes remain unpaid is delinquent for said year.

Yours respectfully,
Paul D. Jewell
County Treasurer.

Auditor's Office, Cass County, Minnesota

I hereby certify that on the first Monday in January 1950, I received of _____ County Treasurer, the Tax List of the _____ of _____ in said County for the year 1948; that I have compared the said list with the Statements receipted for by said Treasurer, which are on file in my office, and that each tract or lot of real property therein against which the taxes, or any part thereof, remains unpaid are delinquent for said year.

(SEAL) _____ County Auditor.

Miller's Point
Rockland
Des Moines Beach
Horseshoe Beach
Lurey Bay
El Sueno

REAL

TABULAR SCHEDULE OF VALUATIONS,
 LEVIED IN THE Township OF Powers

RATES AND TAXES
 COUNTY OF CASS, STATE OF MINNESOTA

School District No.	VALUATION BY SCHOOL DISTRICTS				RATE OF STATE TAXES		RATE OF COUNTY TAXES					RATE OF TOWN TAXES										RATE OF SCHOOL TAXES					
	Agricultural Lands	Non-Agricultural Lands	Personal Property	Total Value of all Property except Money and Credits	Total Rate of State Tax	Rev.	R. & B.	Welfare	Bonds and Int.	Skp.	Total Rate of County Tax	Rev.	R. & B.	Drag Tax	State Loan	Tel.	Total Rate of Town Tax	Local	Special	State Loan	Deficiency	Tuition	Transportation	Brd	C.O.	Total Rate of Sch'l Tax	Total Rate of all Taxes
Un	Dollars 33910	Dollars 11907	Dollars 6329	Dollars 52146	H. 291	234	7.2	48.5	7.9	6.5	Mills 93.5	Mills 4.8	Mills 4.8	Mills 1.	Mills 5.	Mills 15.6	1 Mill 1.	Mills 15.	Mills 30.	Mills 40.	Mills 40.	Mills 1.8	Mills 14.7	Mills 10.	Mills 10.	Mills 82.5	Mills 194.51
					N. H. 386																						
					6.77																						
Assessed Value Homestead	Rural 16785	All Other	Personal Property	Total 16785																							
Non-Homestead Total	26924	2108	6329	35361																							
	43709	2108	6329	52146																							

LOCAL 1 MILL AND SPECIAL SCHOOL TAXES BY DISTRICTS										ALL OTHER TAXES		
Local 1 Mill	Special	State Loan	Def. Imp.	Brd	C.O.	Total School Taxes	FUNDS	Rate	Amounts			
3391	50870	135650	6104	49853	33910	279778	State-Non-Homestead,		15174			
1823	54713	72949	3282	26807	18236	177810	State-Homestead,		13686			
5214	105583	208599	9386	76660	52146	457588	County Revenue,		122032			
							County Road and Bridge,		37550			
							County Welfare,		252918			
							Bonds and Interest		41200			
							Skp		33900			
							Town Revenue,		25030			
							Town Road and Bridge,		25030			
							Town Drag,		5215			
							Town State Loan,		26073			
							Tel.					
							School Local 1 Mill,		5214			
							School Special,		105583			
							School State Loan,		208599			
							Deficiency					
							Tuition		9386			
							Transportation		76660			
							Brd		52146			
							C.O.		457588			

194.51
3.86
198.37

209.51
3.46
213.37

Total Number of Acres 13,115.85
 State of Minnesota,
 COUNTY OF CASS
 Auditor of said County and State aforesaid, do hereby certify that the foregoing is a true and correct Schedule, showing the valuation of all the taxable property, in the July of 1948, in said County, the several rates of Taxation and Totals of the several Tax Funds levied thereon for the year A. D. 1948.
 Witness my hand and official seal, this 14 day of June A. D. 1948.
 L. L. Brown
 County Auditor

Total Taxes Real Estate 9,203.60
 Pers. Prop. 1,350.36
 Total 10,553.96

SEAL

REAL

Miller's Point
 Woodland
 Des Moines Beach
 Horseshoe Beach
 Lurey Bay
 El Sueno

COLLECTIONS OF TAXES OF 1944, OF *Powers*, CASS COUNTY, MINNESOTA

FUNDS	MARCH SETTLEMENT 1944	JUNE SETTLEMENT 1944	NOV. SETTLEMENT 1944	Amount Collected from Nov. 1944 to First Monday in Jan. 1945	REDUCTIONS	Total Reductions and Collected	BALANCE UNCOLLECTED	ADDITIONS	Total Uncollected to First Monday in January, 1945
State—Non-Homestead,	2532	5805	2837	259					
State—Homestead,	2190	6759	4061	295					
County Revenue,	17608	54347	32654	2373					
County Road and Bridge,	5418	16722	10048	730					
County Welfare,	36496	112643	67681	4918					
County Bond and Interest,	5945	16348	11024	801					
<i>Skp</i>	4891	15047	9071	659					
Town Revenue,	3612	11148	6698	487					
Town Road and Bridge,	3612	11148	6698	487					
Town Drag,	752	2323	1395	101					
Town State Loan,									
<i>ll</i>	3762	11613	6977	507					
School Local 1 Mill,	753	2323	1395	102					
School Special,	19968	45561	25617	2443					
School State Loan,									
Deficiency	30099	92902	55820	4056					
Tuition									
Transportation	1355	4181	2512	183					
<i>B+I</i>	11062	34141	20513	1491					
<i>C.O.</i>	7525	23225	13955	1014					
	157580	468286	278958	20906					

	SCHOOL DISTRICT NO.	LOCAL 1 MILL	SPECIAL	STATE LOAN	<i>Imp.</i>	<i>Refi.</i>	<i>B+I</i>	<i>C.O.</i>	TOTALS
MARCH SETTLEMENT	<i>a-un</i> <i>na-un</i>	174 579	2607 17361		313 1042	6952 23147	2555 8507	1738 5787	14389 56423
Totals		753	19968		1355	30099	11062	7525	70762
JUNE SETTLEMENT	<i>a-un</i> <i>na-un</i>	1608 715	24113 21448		2894 1287	64305 28597	23632 10509	16076 7149	132628 69705
Totals		2323	45561		4181	92902	34141	23225	202333
NOVEMBER SETTLEMENT	<i>a-un</i> <i>na-un</i>	1083 312	16248 9371		1950 562	43327 12473	15922 4591	10832 3123	89362 30452
Totals		1395	25619		2512	55820	20613	13755	117814
NOVEMBER to JANUARY	<i>a-un</i> <i>na-un</i>	40 62	597 1846		72 111	1591 2465	585 906	398 616	3283 6006
Totals		102	2443		183	4056	1491	1014	9289
ADDITIONS	School District No.								
Totals									
REDUCTIONS	School District No.								
Totals									

Miller's Point
Woodland
Des Moines Beach
Horseshoe Beach
Lurey Bay
El Sueno

Assessment Roll and Tax List of Real Property in the Town of Gower

Table with columns: IN WHOSE NAME ASSESSED, TO WHOM TRANSFERRED, DESCRIPTION OF PROPERTY, TRUE AND FULL VALUATIONS, ASSESSED VALUATIONS, FINAL EQUALIZED VALUE. Includes entries for Herbert R. + Nellie B. Craswell, Gunnar Johnson, Roy W. + Gertrude A. Curney, and Henry Faust.

Cass County, Minnesota, for Taxes for the Year 1948.

Table with columns: SOLD FOR TAXES, VALUATIONS BY SCHOOL DISTRICTS AS EQUALIZED BY DEPARTMENT OF TAXATION, Tax including State Homestead, State Tax on Non-Homestead, SPECIAL TAXES, TOTAL TAXES, PAID, WHEN PAID, Number of Receipt, March Settlement 1949, June Settlement 1949, November Settlement 1949, Penalty, Collections to First Monday in January 1950, Delinquent on First Monday in January 1950, Total Delinquent Tax and Penalty, REMARKS. Includes entries for 1, 2, 3, 4, 5, 6, 7, 8, 9, 10, 11, 12, 13, 14, 15, 16, 17, 18, 19, 20.

Assessment Roll and Tax List of Real Property in the Town of Comers

IN WHOSE NAME ASSESSED	TO WHOM TRANSFERRED	DESCRIPTION OF PROPERTY				TRUE AND FULL VALUATIONS										FINAL EQUALIZED VALUE						
		SUBDIVISION	Sec. or Lot	Town or Block	Kug.	Number of Acres of Land	No. School District	Indicate Homestead Yes or No	Indicate Agricultural Yes or No	LAND Exclusive of Structures and Improvements		BUILDINGS and Other Structures	MACHINERY Permanently Attached to Real Estate	TOTAL True and Full Value	RURAL		ALL OTHER		MACHINERY Permanently Attached to Real Estate	TOTAL ASSESSED VALUE	Total Assessed Value as Equalized by the Board of Review	
										Dollars	Dollars	Dollars	Dollars	Dollars	Dollars		Dollars	Dollars	Dollars	Dollars	Dollars	Dollars
Aaron Zaffke		NE 1/4 of NE 1/4	20	139	30	40	Law	No	370				370	74					74			
		NW 1/4 of NE 1/4				40	"	No	370				370	74					74			
		SW 1/4 of NE 1/4				40	"	No	370				370	74					74			
Lewis H. Jew, Jr. & Kathryn E. Jew		SE 1/4 of NE 1/4				40	"	No	275				275	55					55			
Joe & May Johnson		NE 1/4 of NW 1/4				40	"	No	370	415	Sup. Bldg.		785	157					177	157		
		NW 1/4 of NW 1/4				40	"	No	230				230	46					46			
Jean Mc Dowell		SW 1/4 of NW 1/4				40	"	No	150				150	30					30			
Aaron Zaffke		SE 1/4 of NW 1/4				40	"	No	275				275	55					55			
		NE 1/4 of SW 1/4				40	"	No	275				275	55					55			
C. L. Curry		S. 28' rds. of NW 1/4 of SW 1/4				15	"	No	135				135	27					27			
		SW 1/4 of SW 1/4				40	"	No	370				370	74					74			
Aaron Zaffke		SE 1/4 of SW 1/4				40	"	No	370	1600	Sup. Bldg.		1990	398					398	398		
Jean Mc Dowell		nw 1/4 SW 1/4 less S. 28' rds.				25	"	No	200	4400	Chy.		1790	358					358	398		
Lewis H. Jew, Jr. & Kathryn E. Jew		NE 1/4 of SE 1/4				40	"	No	370				370	74					74			
Aaron Zaffke		NW 1/4 of SE 1/4				40	"	No	370				370	74					74			
		SW 1/4 of SE 1/4				40	"	No	370				370	74					74			
Lewis H. Jew, Jr. & Kathryn E. Jew		SE 1/4 of SE 1/4				40	"	No	370	420			790	158					158			
						640			5260	2435			7695	1539					1539			

Cass County, Minnesota, for Taxes for the Year 1948.

SOLD FOR TAXES	VALUATIONS BY SCHOOL DISTRICTS AS EQUALIZED BY DEPARTMENT OF TAXATION						Tax including State Homestead	State Tax on Non-Homestead	SPECIAL TAXES	TOTAL TAXES	PAID	WHEN PAID	Number of Receipt	March Settlement 1949	June Settlement 1949	Penalty	November Settlement 1949	Penalty	Collections to First Monday in January 1950	Penalty	Delinquent on First Monday in January 1950	Total Delinquent Tax and Penalty	REMARKS
	District No.	District No.	District No.	District No.	District No.	District No.																	
	Rate	Rate	Rate	Rate	Rate	Rate																	
1	H	74					1440		1440	1	PAID IN FULL	MAY 3 1949	4955		1440								
2	H	74					1440		1440	2	PAID IN FULL	MAY 3 1949	4955		1440								
3	H	74					1440		1440	3	PAID IN FULL	MAY 3 1949	4955		1440								
4	H	55					1070		1070	4	PAID IN FULL	FEB 4 1949	932	1070									
5										5													
6	H	157					3054		3054	6	PAID IN FULL	JUN 8 1949	7032		3054		55						
7	H	46					894		894	7	PAID IN FULL	JUN 8 1949	7032		894		10						
8	H	30					584		584	8	2nd Half Paid	MAY 31 1949	9801		292								
9	H	55					1070		1070	9	PAID IN FULL	MAY 3 1949	4955		1070								
10										10													
11	H	55					1070		1070	11	PAID IN FULL	MAY 3 1949	4955		1070								
12	H	27					526		526	12	2nd Half Paid	OCT 31 1949	14400		263								
13	H	74					1440		1440	13	2nd Half Paid	OCT 31 1949	14400		720		263						
14	H	398					7742		7742	14	PAID IN FULL	MAY 3 1949	4955		7742								
15	H	40					778		778	15	2nd Half Paid	OCT 1 1949	12766		389		389						
16	H	74					1440		1440	16	PAID IN FULL	FEB 4 1949	932	1440									
17	H	74					1440		1440	17	PAID IN FULL	MAY 3 1949	4955		1440								
18	H	74					1440		1440	18	PAID IN FULL	MAY 3 1949	4955		1440								
19	H	158					3074		3074	19	PAID IN FULL	FEB 4 1949	932	3074									
20										20													
							29942		29942					55631	18746		5612						

Assessment Roll and Tax List of Real Property in the Town of Powers

Cass County, Minnesota, for Taxes for the Year 1948.

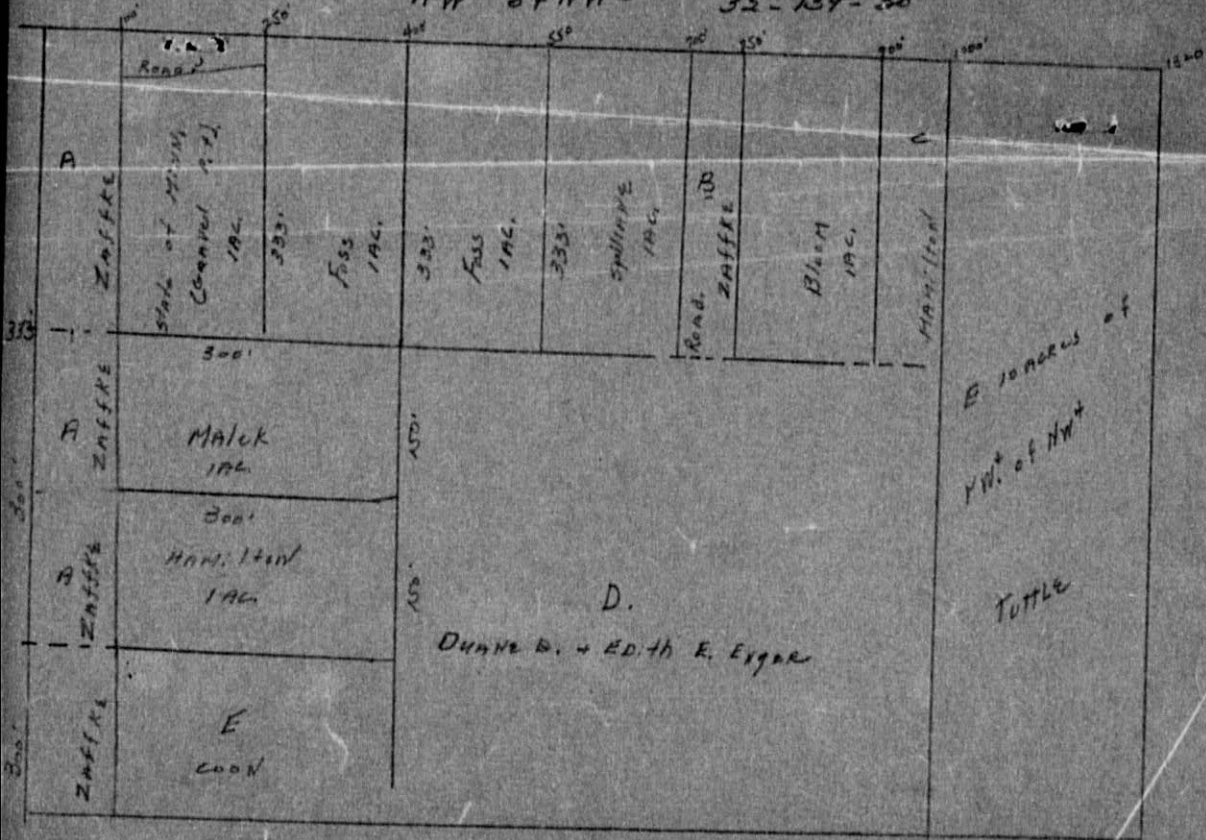
Table with columns: IN WHOSE NAME ASSESSED, TO WHOM TRANSFERRED, DESCRIPTION OF PROPERTY, TRUE AND FULL VALUATIONS, ASSESSED VALUATIONS, VALUATIONS BY SCHOOL DISTRICTS AS EQUALIZED BY DEPARTMENT OF TAXATION, TAXES, PAID, WHEN PAID, Number of Receipt, March Settlement 1949, June Settlement 1949, November Settlement 1949, Collections to First Monday in January 1950, Delinquent on First Monday in January 1950, Total Delinquent Tax and Penalty, REMARKS.

Cont on next page.

Woodland, Des Moines Beach, Horseshoe Beach, Lurey Bay, El Sueno

NW 1/4 of NW 1/4

32-139-30



Road

D
ZAFFKE

State of Minn.
Conceded 192

192

Foss

192

192

Foss

192

192

Spillings

192

Road 10

ZAFFKE

Blum

192

Hamilton

H
ZAFFKE

Malak
192

300'

A
ZAFFKE

Hamilton
192

300'

ZAFFKE

E
COON

D.

DUNNE B. + EDITH E. EYGAR

E 10 ACRES of
NW 1/4 of NW 1/4

TUTTLE

250'

250'

250'

250'

250'

250'

100'

1500'

150'

150'

300'

300'

300'

Assessment Roll and Tax List of Real Property in the Town of Bowers

Table with columns: IN WHOSE NAME ASSESSED, TO WHOM TRANSFERRED, SUBDIVISION, DESCRIPTION OF PROPERTY, TRUE AND FULL VALUATIONS, ASSESSED VALUATIONS, FINAL EQUALIZED VALUE. Includes handwritten entries for Paul L. Britz, Nicholas A. Norman, etc.

Cass County, Minnesota, for Taxes for the Year 1948.

Table with columns: VALUATIONS BY SCHOOL DISTRICTS AS EQUALIZED BY DEPARTMENT OF TAXATION, SOLD FOR TAXES, SPECIAL TAXES, TOTAL TAXES, PAID, WHEN PAID, Number of Receipt, March Settlement 1949, June Settlement 1949, November Settlement 1949, Collections to First Monday in January 1950, Delinquent on First Monday in January 1950, Total Delinquent Tax and Penalty, REMARKS. Includes handwritten notes and dates.

