

ASSESSMENT & TAX 1117 - 1962  
Powers



SUMMARY OF TAX COLLECTION

Original Levy	- - - - -	\$ 29,559.44	
Additions	- - - - -	\$ _____	
			\$ _____
Abatements	- - - - -	\$ 340.02	
			\$ 29,219.42

COLLECTIONS

March Settlement	- - - - -	\$ 2354.07	
June Settlement	- - - - -	\$ 16207.63	
November Settlement	- - - - -	\$ 8159.05	
January Settlement	- - - - -	\$ 468.68	\$ 27,187.43
			\$ _____
Over Collected	- - - - -	\$ 40.20	
Under Collected	- - - - -	\$ _____	
Delinquent	- - - - -	\$ 2070.19	\$ _____
Total	- - - - -		\$ 29,219.42

Des Moines Beach  
 Horseshoe Beach  
 Echo Hill  
 El Sueno  
 Wildmore Beach  
 Finquites Beach  
 Shores









Assessor's Return of Exempt Real Property in the \_\_\_\_\_ of \_\_\_\_\_ County of \_\_\_\_\_, Minnesota, for the Year 1962

FORM 2, HILL & HARRIS CO., MINNEAPOLIS

NAMES OF OWNERS	DESCRIPTION	Sec. or Lot	Town or Range	No. of Acres	FOR WHAT PURPOSE USED	TRUE AND FULL VALUATIONS			ASSESSED VALUATIONS		REMARKS	
						LAND Exclusive of Structures and Improvements Dollars	BUILDINGS and Other Structures Dollars	MACHINERY Permanently Attached to Real Estate Dollars	TOTAL True and Full Value Dollars	Rural Including Machinery		All Other
										33 1/3%		40%
Powers Township	2.5 acres in NW 1/4 15 8 1/2	5	139 30	2.5	gravel pit.	45			45	15		
Village of Backus	S 602' x 16 188' of SW 1/4 NW 1/4	29	139 30		airport	78			78	26		
Village of Backus	S 602' x W 535.5' x 86 1/2 NW 1/4	29	139 30		airport.	222	300		522	174		
Backus Burial Cemetery Assn.	5 acres in NE 1/4 NW 1/4	32	139 30		Cemetery	101	100		201	67		
Village of Backus	NE 1/4 SW 1/4	32	139 30		Village dump	600			600	200		
Backus Burial Cemetery Assn.	Part of NE 1/4 NW 1/4	32	139 30		Cemetery	105			105	35		
Powers Township	N 783' x 833' x W 100' of NW 1/4 NW 1/4 Section 32	32	139 30		dump grounds	33			33	11		

Real Estate

Woodland  
Des Moines Beach  
Horseshoe Beach  
Echo Hill  
El Steno  
Hillside  
Vincennes Shores



Assessment Roll and Tax List of Real Property in the Town of Powers

\* Indicate Type of Property: R-Residential, C-Commercial, I-Industrial, U-Utility, F-Farm, L-Lakeshore, T-Timber, M-Mineral

Form 50 MILLER-DAVEY CO. MINNEAPOLIS

Table with columns: IN WHOSE NAME ASSESSED, SUBDIVISION, TRUE AND FULL VALUATIONS, ASSESSED VALUATIONS, FINAL EQUALIZED VALUE. Includes handwritten entries for George J. Owen and various land parcels.

Cass County, Minnesota, for Taxes for the Year 1962.

Table with columns: VALUATIONS BY SCHOOL DISTRICTS AS EQUALIZED BY DEPARTMENT OF TAXATION, TAXES, PAID, WHEN PAID, Number of Receipt, March Settlement 1963, June Settlement 1963, November Settlement 1963, Collections to First Monday in January 1964, Delinquent on First Monday in January 1964, Total Delinquent Tax and Penalty, REMARKS. Includes handwritten entries for taxes paid in full.

Real Estate

Woodland Beach, Des Moines Beach, Echo Hill, El Sueno Beach, Winnetka Shores



Assessment Roll and Tax List of Real Property in the Town of Powers

Form 50 MILLER-DAVIS CO., MINNEAPOLIS

\* Indicate Type of Property: R-Residential, C-Commercial, I-Industrial, U-Utility, F-Farm, L-Lakeshore, T-Timber, M-Mineral

IN WHOSE NAME ASSESSED	DESCRIPTION OF PROPERTY				No. School District	Indicate Homestead Yes or No	Agri. or Semi-Agri. Type of Property	TRUE AND FULL VALUATIONS				ASSESSED VALUATIONS								Total Assessed Value as Equalized by the Board of Review	FINAL EQUALIZED VALUE
	SUBDIVISION	Sec. or Lot	Town or Block	Number of Acres of Land				LAND Exclusive of Structures and Improvements	BUILDINGS and Other Structures	MACHINERY Permanently Attached to Real Estate	TOTAL True and Full Value	RURAL				MACHINERY Permanently Attached to Real Estate	Seasonal and Recreational Cabins	TOTAL ASSESSED VALUE			
												Homestead Up to \$4,000 20%	Over \$4,000 and Non-Homestead 33 1/3%	Timber Land Class 2e 20%	Homestead Up to \$4,000 25%				Over \$4,000 and Non-Homestead 40%		
Earl + Lillie Stadler	Govt Lot 1	2	13930	3788	UN	no	4	T	95	133		228					69	76			
Howard Jay Loren	" " 2					no	4	T	162	121		162					49	54			
State of Minnesota	SE 1/4 of NE 1/4								147			147									
State of Minnesota	SE 1/4 of NE 1/4																				
Louise Wetzel	Govt Lot 3			3788		no	4	T	162			162					54				
John M. Johnson	E 1/2 of Govt Lots 4-5			3788		no	4	C	454	303	288	317	475	1121	752	131	87	156			
" "	W 1/2 of " " 4-5			3665		4	4	T	275	120	132	198	1121	752	68	3	77	96			
Jeff J. Manley	SE 1/4 of NW 1/4			40		no	4	T	159			159					32				
						no	4	T	145			145					29				
									264			264					88				
									240			240					80				
Charles W. + Elizabeth L. Whaley	3.100' of Govt Lot 6 W 1/2 of N + S 1/2 line			60		4	no	L	83	55	1788	1881	254	314	251	228	376				
State of Minnesota	NE 1/4 of SE 1/4								50	1090		1140					251				
State of Minnesota	THAT PART of Govt Lot 6 lying E. of N. + S 1/2 line OR (NW 1/4 of SE 1/4)																				
Rollin Frank Payne	Govt Lot 7			4685		no	4	T	264			264					88				
State of Minnesota	SE 1/4 of SE 1/4								240			240					80				
Roy M. + Bernice Morell	W. 13 AC. of Govt Lot 6 less S 1/2			13		no	no	R	168	112	594	891	1059	706	353	235	214	353			
									102	540		642					214				
																	336	637			
																	370	237			
																	530	539			
																	973	4			
																	1410	1071			

Cass County, Minnesota, for Taxes for the Year 1962.

SOLD FOR TAXES	VALUATIONS BY SCHOOL DISTRICTS AS EQUALIZED BY DEPARTMENT OF TAXATION						Tax Including State Homestead	State Tax on Homestead	SPECIAL TAXES	SPECIAL TAXES	TOTAL TAXES	PAID	WHEN PAID	Number of Receipt	March Settlement 1961	June Settlement 1961	Penalty	November Settlement 1961	Penalty	Collections to First Monday in January 1961	Penalty	Delinquent on First Monday in January 1961	Total Delinquent Tax and Penalty	REMARKS
	District No.	District No.	District No.	District No.	District No.	District No.																		
	Rate	Rate	Rate	Rate	Rate	Rate																		
1																								
2																								
3																								
4																								
5																								
6	SOLD FOR TAXES																							
7																								
8																								
9																								
10																								
11																								
12																								
13																								
14																								
15																								
16																								
17																								
18																								
19																								
20																								

Real Estate

Foodland  
Des Moines  
Horseshoe  
Echo Hill  
El Sueno  
Wilmare  
V. F. Shores



Assessment Roll and Tax List of Real Property in the Town of Powers

Indicate Type of Property: R-Residential, C-Commercial, I-Industrial, U-Utility, F-Farm, L-Lakeshore, T-Timber, M-Mineral

Form 50 MILLER-GIVY CO., MINNEAPOLIS

Table with columns: IN WHOSE NAME ASSESSED, SUBDIVISION, No. School District, Indicate Homestead, Acres, TRUE AND FULL VALUATIONS (LAND, BUILDINGS, MACHINERY, TOTAL), ASSESSED VALUATIONS (RURAL, ALL OTHER, MACHINERY, Seasonal and Recreational Cabins, TOTAL ASSESSED VALUE), FINAL EQUALIZED VALUE.

Cass County, Minnesota, for Taxes for the Year 1962.

Table with columns: SOLD FOR TAXES, VALUATIONS BY SCHOOL DISTRICTS AS EQUALIZED BY DEPARTMENT OF TAXATION, Tax Including State Homestead, State Tax on Non-Homestead, SPECIAL TAXES, TOTAL TAXES, PAID, WHEN PAID, Number of Receipt, March Settlement 1963, June Settlement 1963, November Settlement 1963, Collections to First Monday in January 1964, Delinquent on First Monday in January 1964, Total Delinquent Tax and Penalty, REMARKS.



Assessment Roll and Tax List of Real Property in the Town of Powers

Form 50 MILLER-DAVIS CO., MINNEAPOLIS

\* Indicate Type of Property: R-Residential, C-Commercial, I-Industrial, U-Utility, F-Farm, L-Lakeshore, T-Timber, M-Mineral

Table with columns: IN WHOSE NAME ASSESSED, DESCRIPTION OF PROPERTY, TRUE AND FULL VALUATIONS, ASSESSED VALUATIONS, and FINAL EQUALIZED VALUE. Includes handwritten entries for Andersons, Carders, Taylors, Bundys, etc.

Cass County, Minnesota, for Taxes for the Year 1962.

Table with columns: VALUATIONS BY SCHOOL DISTRICTS AS EQUALIZED BY DEPARTMENT OF TAXATION, TAXES, PAID, WHEN PAID, and REMARKS. Includes handwritten entries for school districts and tax payment dates.



















Assessment Roll and Tax List of Real Property in the Town of Powers

\* Indicate Type of Property: R-Residential, C-Commercial, I-Industrial, U-Utility, F-Farm, L-Lakeshore, T-Timber, M-Mineral

Cass County, Minnesota, for Taxes for the Year 1962.

Table with columns: IN WHOSE NAME ASSESSED, DESCRIPTION OF PROPERTY, TRUE AND FULL VALUATIONS, ASSESSED VALUATIONS, and FINAL EQUALIZED VALUE. Includes entries for M.P. + John C. + Florence Dumont, Marjorie P. Dumont, Walter + Delores Karkula, etc.

Table with columns: VALUATIONS BY SCHOOL DISTRICTS AS EQUALIZED BY DEPARTMENT OF TAXATION, TAXES, PAID, WHEN PAID, and REMARKS. Includes tax rates for various districts and payment dates.

Real Estate

Woodland, Des Moines Beach, Horseshoe Beach, Echo Hill, El Seno, Wildmore Beach, V. Shores



Assessment Roll and Tax List of Real Property in the Town of Powers, Cass County, Minnesota, for Taxes for the Year 1962.

Form 30 MILLER-DAVIS COMPANY

\* Indicate Type of Property: R-Residential, C-Commercial, I-Industrial, U-Utility, F-Farm, L-Lakeshore, T-Timber, M-Mineral

Table with columns: IN WHOSE NAME ASSESSED, DESCRIPTION OF PROPERTY, TRUE AND FULL VALUATIONS, ASSESSED VALUATIONS, and FINAL EQUALIZED VALUE. Includes handwritten entries for property owners like Ralph P. Bundy, Otto Kaste, and William E. Green.

Cass County, Minnesota, for Taxes for the Year 1962.

Table with columns: VALUATIONS BY SCHOOL DISTRICTS AS EQUALIZED BY DEPARTMENT OF TAXATION, TAX INCLUDING STATE, SPECIAL TAXES, TOTAL TAXES, PAID, WHEN PAID, and REMARKS. Includes handwritten entries for school districts and tax payment dates.



Assessment Roll and Tax List of Real Property in the Town of Powers

Form 30

\* Indicate Type of Property: R-Residential, C-Commercial, I-Industrial, U-Utility, F-Farm, L-Lakeshore, T-Timber, M-Mineral

Table with columns: IN WHOSE NAME ASSESSED, SUBDIVISION, No. Section District, Indicate Homestead, Indicate Rec., Indicate Type of Property, TRUTH AND FULL VALUATIONS, ASSESSED VALUATIONS, TOTAL ASSESSED VALUE, FINAL EQUALIZED VALUE.

(CONT NEXT PAGE)

Cass County, Minnesota, for Taxes for the Year 1962.

Table with columns: VALUATIONS BY SCHOOL DISTRICTS AS EQUALIZED BY DEPARTMENT OF TAXATION, TAXES, PAID, WHEN PAID, Number of Receipt, March Settlement 1963, June Settlement 1963, November Settlement 1963, Collections to First Monday in January 1964, Delinquent on First Monday in January 1964, Total Delinquent Tax and Penalty, REMARKS.

Woodland, Des Moines Beach, Horseshoe Beach, Echo Hill, El Sueno, Wilmers Beach, Vignettes Shores







Assessment Roll and Tax List of Real Property in the Town of Powers

\* Indicate Type of Property: R-Residential, C-Commercial, I-Industrial, U-Utility, F-Farm, L-Lakeshore, T-Timber, M-Mineral

Form 50 MILLER-DAVIS CO., MINNEAPOLIS

Table with columns: IN WHOSE NAME ASSESSED, DESCRIPTION OF PROPERTY, TRUE AND FULL VALUATIONS, ASSESSED VALUATIONS, and FINAL EQUALIZED VALUE. Includes entries for State of Minnesota and various individuals like Paul J. + Mary J. Eklund.

(CONT NEXT PAGE)

Cass County, Minnesota, for Taxes for the Year 1962.

Table with columns: VALUATIONS BY SCHOOL DISTRICTS AS EQUALIZED BY DEPARTMENT OF TAXATION, TAXES, PAID, WHEN PAID, and REMARKS. Includes handwritten notes and district numbers.

Vertical text on the right edge of the page, including 'Des Moines Beach', 'Horseshoe Beach', 'Echo Hill', 'El Sueño', 'Wildeare Beach', and 'Vinoletts Shores'.







Assessment Roll and Tax List of Real Property in the Town of Powers  
\* Indicate Type of Property: R-Residential, C-Commercial, I-Industrial, U-Utility, F-Farm, L-Lakeshore, T-Timber, M-Mineral

Form 50 MILLER & DAVIS CO., MINNEAPOLIS

IN WHOSE NAME ASSESSED	DESCRIPTION OF PROPERTY				No. School District	Indicate Homestead Yes or No	Agricultural or Recreational Yes or No	Indicate Type of Property	TRUE AND FULL VALUATIONS				ASSESSED VALUATIONS						FINAL EQUALIZED VALUE		
	SUBDIVISION	Sec. or Lot	Town or Block	Number of Acres of Land					LAND Exclusive of Structures and Improvements	BUILDINGS and Other Structures	MACHINERY Permanently Attached to Real Estate	TOTAL True and Full Value	RURAL			ALL OTHER				TOTAL ASSESSED VALUE	Total Assessed Value as Finalized by the Board of Review
													Acres	100ths	Homestead Up to \$1,000 20%	Over \$4,000 and Non-Homestead 33 1/3%	Timber Land Class 3e 20%	Homestead Up to \$4,000 25%			
State of Minnesota	NE 1/4 of NE 1/4		121 30	114																	
State of Minnesota	NW 1/4 of NE 1/4																				
State of Minnesota	SW 1/4 of NE 1/4																				
State of Minnesota	SE 1/4 of NE 1/4																				
State of Minnesota	NE 1/4 of NW 1/4																				
State of Minnesota	NW 1/4 of NW 1/4																				
State of Minnesota	SW 1/4 of NW 1/4																				
State of Minnesota	SE 1/4 of NW 1/4																				
State of Minnesota	NE 1/4 of SW 1/4																				
State of Minnesota	NW 1/4 of SW 1/4																				
State of Minnesota	SW 1/4 of SW 1/4																				
State of Minnesota	SE 1/4 of SW 1/4																				
State of Minnesota	NE 1/4 of SE 1/4																				
State of Minnesota	NW 1/4 of SE 1/4																				
State of Minnesota	SW 1/4 of SE 1/4																				
State of Minnesota	NE 1/4 of SE 1/4																				

Cass County, Minnesota, for Taxes for the Year 1962.

SOLD FOR TAXES	VALUATIONS BY SCHOOL DISTRICTS AS EQUALIZED BY DEPARTMENT OF TAXATION						Tax Including State Homestead	State Tax on Non-Homestead	SPECIAL TAXES	SPECIAL TAXES	TOTAL TAXES	PAID	WHEN PAID	Number of Receipt	March Settlement 1963	June Settlement 1963	Penalty	November Settlement 1963	Penalty	Collections to First Monday in January 1964	Penalty	Delinquent on First Monday in January 1964	Total Delinquent Tax and Penalty	REMARKS
	District No.	District No.	District No.	District No.	District No.	District No.																		
	Rate	Rate	Rate	Rate	Rate	Rate																		

Woodland  
Des Moines Beach  
Horseshoe Beach  
Echo Hill  
El Sueño  
Hildere Beach  
Virentis Shores







\* Indicate Type of Property: R-Residential, C-Commercial, I-Industrial, U-Utility, F-Farm, L-Lakeshore, T-Timber, M-Mineral

FORM 30 MILLER-DAVIS CO. MINNEAPOLIS

DESCRIPTION OF PROPERTY

TRUE AND FULL VALUATIONS

ASSESSED VALUATIONS

Table with columns for property description, subdivisions, and various valuation categories including True and Full Valuations, Assessed Valuations, and Final Equalized Value.

Table with columns for school district valuations, taxes (including State, Special, and Total), and payment information (PAID, WHEN PAID, etc.).

Vertical text on the right edge of the page listing various locations: Foodland, Des Moines Beach, Horseshoe Beach, Echo Hill, El Sueño, Wilder's Beach, and Minnetonka Shores.



Assessment Roll and Tax List of Real Property in the Town of Powers

\* Indicate Type of Property: R-Residential, C-Commercial, I-Industrial, U-Utility, F-Farm, L-Lakeshore, T-Timber, M-Mineral

Cass County, Minnesota, for Taxes for the Year 1962.

Table with columns: IN WHOSE NAME ASSESSED, DESCRIPTION OF PROPERTY, TRUE AND FULL VALUATIONS, ASSESSED VALUATIONS, and FINAL EQUALIZED VALUE. Includes entries for A. J. Roberts + R. L. Thope, William Curney, Roy + Gertrude Curney, Paul L. Britz, Lloyd + Dagmar Bradfield, Kenneth Scott, and Francis M. + Anna Louise Boots.

Table with columns: VALUATIONS BY SCHOOL DISTRICTS AS EQUALIZED BY DEPARTMENT OF TAXATION, TAX INCLUDING STATE HOMESTEAD, SPECIAL TAXES, TOTAL TAXES, PAID, WHEN PAID, and REMARKS. Includes handwritten notes like 'PAID IN FULL' and 'PAID D.R. # 35769-1-13-64'.

Vertical text on the right edge of the page: Woodland, Des Moines Beach, Horseshoe Beach, Echo Hill, El Sueno Beach, Wildmore Beach, V. Fincher's Shores.







Indicate Type of Property: R-Residential, C-Commercial, I-Industrial, U-Utility, F-Farm, L-Lakeshore, T-Timber, M-Mineral

Table with columns: IN WHOSE NAME ASSESSED, DESCRIPTION OF PROPERTY, TRUE AND FULL VALUATIONS, ASSESSED VALUATIONS, FINAL EQUALIZED VALUE.

Table with columns: VALUATIONS BY SCHOOL DISTRICTS AS EQUALIZED BY DEPARTMENT OF TAXATION, TAX INCLUDING STATE HOMESTEAD, SPECIAL TAXES, TOTAL TAXES, PAID, WHEN PAID, Number of Receipt, March Settlement, June Settlement, November Settlement, Collections to First Monday in January, Delinquent on First Monday in January, Total Delinquent Tax and Penalty, REMARKS.

Vertical text on the right edge of the page, including 'Woodland', 'Des Moines Beach', 'Horseshoe Beach', 'Echo Hill', 'El Sueno', 'Wildmere Beach', 'Winnetts Shores'.







Assessment Roll and Tax List of Real Property in the Town of Powers

Form 5C MILLER-DAVIS CO. MINNEAPOLIS

\* Indicate Type of Property: R-Residential, C-Commercial, I-Industrial, U-Utility, F-Farm, L-Lakeshore, T-Timber, M-Mineral

Table with columns: IN WHOSE NAME ASSESSED, DESCRIPTION OF PROPERTY, TRUE AND FULL VALUATIONS, ASSESSED VALUATIONS, and FINAL EQUALIZED VALUE. Includes handwritten entries for Jean + Jack McDowell, Jr. and Loren Arthur + Mary Barchus.

Cass County, Minnesota, for Taxes for the Year 1962.

Table with columns: VALUATIONS BY SCHOOL DISTRICTS AS EQUALIZED BY DEPARTMENT OF TAXATION, TAX INCLUDING STATE HOMESTEAD, State Tax on Non-Homestead, SPECIAL TAXES, TOTAL TAXES, PAID, WHEN PAID, Number of Receipt, March Settlement, June Settlement, November Settlement, Collections to First Monday in January, Delinquent on First Monday in January, Total Delinquent Tax and Penalty, and REMARKS.















Assessment Roll and Tax List of Real Property in the Town of Powers

Form 50 MILLER DAVIS CO., MINNEAPOLIS

\* Indicate Type of Property; R-Residential, C-Commercial, I-Industrial, U-Utility, F-Farm, L-Lakeshore, T-Timber, M-Mineral

Table with columns: IN WHOSE NAME ASSESSED, SUBDIVISION, No. School District, Indicate Homestead, Agri or Res, Type of Property, TRUE AND FULL VALUATIONS (LAND, BUILDINGS, MACHINERY, TOTAL), ASSESSED VALUATIONS (RURAL, ALL OTHER, MACHINERY, Seasonal and Recreational Cabins, TOTAL ASSESSED VALUE), Total Assessed Value as Equalized by the Board of Review, FINAL EQUALIZED VALUE, and REMARKS.

(CONT NEXT PAGE)

Cass County, Minnesota, for Taxes for the Year 1962.

Table with columns: SOLD FOR TAXES, VALUATIONS BY SCHOOL DISTRICTS AS EQUALIZED BY DEPARTMENT OF TAXATION, Tax including State Homestead, State Tax on Non-Homestead, SPECIAL TAXES, TOTAL TAXES, PAID, WHEN PAID, Number of Receipt, March Settlement 1963, June Settlement 1963, November Settlement 1963, Penalty, Collections to First Monday in January 1964, Delinquent on First Monday in January 1964, Total Delinquent Tax and Penalty, and REMARKS.

Vertical text on the right edge of the page: Des Moines Beach, Echo Hill, El Suro, Lindere Beach, V. Vincents Shores







Form 50 MILLER-DAVIS CO. MINNEAPOLIS

\* Indicate Type of Property: R-Residential, C-Commercial, I-Industrial, U-Utility, F-Farm, L-Lakeshore, T-Timber, M-Mineral

IN WHOSE NAME ASSESSED	DESCRIPTION OF PROPERTY				School District	Indi-estate	Agr. or Home-lead	Indi-estate	TRUE AND FULL VALUATIONS				ASSESSED VALUATIONS						FINAL EQUALIZED VALUE	
	SUBDIVISION	Sec. or Lot	Town or Block	Number of Acres of Land					LARD	BUILDINGS and Other Structures	MACHINERY Permanently Attached to Real Estate	TOTAL True and Full Value	RURAL		ALL OTHER					
													Homestead Up to \$4,000	Over \$4,000 and Non-Homestead	Timber Land Class 3e 20%	Homestead Up to \$4,000	Over \$4,000 and Non-Homestead	MACHINERY Permanently Attached to Real Estate		Seasonal and Recreational Cabins
Eugene D. + Mary Landis	NE 1/4 of SW 1/4 N. of HX 874 E. 200' of Govt Lot 8 lying N. of HX. 87	23	139 30	6	114	no	SR	L	345 230 209	727 1090 641	1455 957 870						418 319 290	290	478 319	Dollars
E. R. Lippka	NW 1/4 of NE 1/4 (LAKE) Govt Lot 4 less W. 300' + less E. 431.3' of W. 731.13 except S. 618' + less E. 700' of W. 731.3' except S. 567'		10 04		40	no	R		256 171 155	293 1039 650	1295 864 785						159 173 157	157	259 173	Dollars
Arnold B. + Sophie A. Anderson	Govt Lot 5 E. 200' of W. 731.3' except S. 569'		22 70		40	no	R		238 159 145	363 544 330	782 522 475						95 75 75	95	156 104	Dollars
Thomas Albert + Isabelle B. Bostock	Govt Lot 4		1		70	no	SR	L	16 51 46	263 594 239	470 314 285						157 105 95	95	157 105	Dollars
A. Leslie + Inogene S. Smith	Govt Lot 2		22 35		40	no	C		610 407 370	1260 1386 2079 342 594	322 2189 1990						24 161 146	24	69 862 420	Dollars
Doris M. Gustafson	"		2 30		70	no	L		174 116 105	797 1188 720	1362 908 825						454 307 275	454	654 502	Dollars
Eugene D. + Mary Landis	W. 564' of S. 90' of Govt Lot 3		1		70	no	L		73 49 45		73 49 45						15 7 26	15	26 7	Dollars
A. Leslie + Inogene S. Smith	Govt Lot 3 less APPROX. 4 ACES 1 AC. of Govt Lot 8 W. of RAINEY LAKE N. of BAKUS + PONTORIO RD.		34 45		70	no	L		561 374 340	367 543 329	1104 736 669						36 245 223	36	368 245	Dollars
Elmer + Alma Christensen	"		1		70	no	L		99 66 60	16 5247 150	346 231 210						115 77 70	115	115 77	Dollars
Isaac M. Walker	NE 1/4 of SW 1/4 less 5 1/2 AC.		34 50		70	no	F		419 381		419 381						140 140 127	140	140 140	Dollars
"	Govt Lot 8 less 4 ACES + less 1/2 AC.		24 66		70	no	F		210 191	232 211	442 402						147 134 134	147	147 147	Dollars
Henry C. + Vernice E. Montmann	Govt Lot 9		60		70	no	L		99 66 60		99 66 60						33 22 20	33	33 22	Dollars
I. M. Walker	"		46 30		70	no	F		426 387		426 387						142 140 129	142	142 140	Dollars
Luella Powers	All THAT PART of Govt Lot 8 lying S. of S. 1/2 line running E+W less 18 AC.		3		70	no	L		118 79 72		118 79 72						39 26 24	39	39 26	Dollars
A. O. + Mabel Wilson	NE 1/4 of SE 1/4 #87 W. of C. Rd.		37		70	no	T		56 51		56 51						19 17 17	19	19 17	Dollars
Fred K. + Violet M. Schultz	NW 1/4 of SE 1/4 S. of HX. 87 less sold		40		40	no	R		297 198 180	757 1435 870	1341 55 1050						34 231 210	34	346 231	Dollars
"	Govt Lot 6 less sold		27 60		40	no	T		209 190		209 190						42 38 38	42	42 38	Dollars
A. O. + Mabel Wilson	SE 1/4 of SE 1/4 less sold		37 79		70	no	T		165 150		165 150						50 50 50	50	50 50	Dollars
Lyle A. + Carol V. Thomas	227 N + S X 430 E + W IN SW COR. of SE 1/4 of SE 1/4		2 21		70	no	T		79 72		79 72						24 24 24	24	24 24	Dollars
(CONT NEXT PAGE)			361 60						3209 3530 4510	5760 6336 9385	8969 9866 13895						646 711 1044 11528 1679 2255	646 711 1044	385 424 635 2569 2814 3934	Dollars

SOLID FOR TAXES	VALUATIONS BY SCHOOL DISTRICTS AS EQUALIZED BY DEPARTMENT OF TAXATION						Tax Including State Homestead	State Tax on Non-Homestead	SPECIAL TAXES	SPECIAL TAXES	TOTAL TAXES	PAID	WHEN PAID	Number of Receipt	March Settlement 1963	June Settlement 1963	November Settlement 1963	Collections to First Monday in January 1964	Delinquent on First Monday in January 1964	Total Delinquent Tax and Penalty	REMARKS		
	District No.	District No.	District No.	District No.	District No.	District No.																	
	Rate	Rate	Rate	Rate	Rate	Rate																	
1							117 08	4 08			124 16	PAID IN FULL	JUL 16 1963	14783									
2																							
3																							
4																							
5																							
6																							
7																							
8																							
9																							
10																							
11																							
12																							
13																							
14																							
15																							
16																							
17																							
18																							
19																							
20																							

Woodland  
Des Moines  
Beech  
Horseshoe  
Beech  
Echo Hill  
El Sueno  
Villagers  
Beech  
Shores



Indicate Type of Property: R-Residential, C-Commercial, I-Industrial, U-Utility, F-Farm, L-Lakeshore, T-Timber, M-Mineral

Table with columns: IN WHOSE NAME ASSESSED, DESCRIPTION OF PROPERTY, TRUE AND FULL VALUATIONS, ASSESSED VALUATIONS, VALUATIONS BY SCHOOL DISTRICTS AS EQUALIZED BY DEPARTMENT OF TAXATION, TAXES, PAID, WHEN PAID, and REMARKS. Includes handwritten entries for property owners like Clyde H. + Annie J. Quinn and Otto A. Sell.



LOT  
2

LOT  
3



LAKE

GOV'T LOT 4  
23-139-30  
21.65 ACS.

Smith

Quinn

Tranter

Heightshoo

Rollins

Bostook

569' 619'

100'

Road 100' 200'  
131.3' 231.3'

131.3' 100' 100' 100'

300' 400' 500' 600' 700'  
331.3' 431.3' 531.3' 631.3' 731.3'

200'

1000' 1100' 1200' 1300' 1320'

Smith

Lippka



Assessment Roll and Tax List of Real Property in the Town of Powers

\* Indicate Type of Property: R-Residential, C-Commercial, I-Industrial, U-Utility, F-Farm, L-Lakeshore, T-Timber, M-Mineral

Cass County, Minnesota, for Taxes for the Year 1962.

Table with columns: IN WHOSE NAME ASSESSED, SUBDIVISION, No. School District, Indicate Homestead, Agr. or Recr., Indicate Type of Property, TRUE AND FULL VALUATIONS, ASSESSED VALUATIONS (RURAL, ALL OTHER), TOTAL ASSESSED VALUE, Total Assessed Value as Equalized by the Board of Review, FINAL EQUALIZED VALUE.

Table with columns: VALUATIONS BY SCHOOL DISTRICTS AS EQUALIZED BY DEPARTMENT OF TAXATION, Tax Including State Homestead, State Tax on Non-Homestead, SPECIAL TAXES, TOTAL TAXES, PAID, WHEN PAID, Number of Receipt, March Settlement 1963, June Settlement 1963, November Settlement 1963, Collections to First Monday in January 1964, Delinquent on First Monday in January 1964, Total Delinquent Tax and Penalty, REMARKS.

(CONT NEXT PAGE)

Woodland, Des Moines Beach, Horseshoe Beach, Echo Hill, El Sueno, Mildred Beach, Vignettes Shores







Assessment Roll and Tax List of Real Property in the Town of Powers

Cass County, Minnesota, for Taxes for the Year 1962.

Form 30 MILLER-DAVIS CO., MINNEAPOLIS

\* Indicate Type of Property: R-Residential, C-Commercial, I-Industrial, U-Utility, F-Farm, L-Lakeshore, T-Timber, M-Mineral

Table with columns: IN WHOSE NAME ASSESSED, SUBDIVISION, Section or Lot, Town or Block, Number of Acres of Land, Description of Property, True and Full Valuations, Assessed Valuations, Valuations by School Districts, Tax Including State Homestead, State Tax on Non-Homestead, Special Taxes, Total Taxes, PAID, WHEN PAID, Number of Receipt, March Settlement, June Settlement, November Settlement, Collections to First Monday in January 1964, Delinquent on First Monday in January 1964, Total Delinquent Tax and Penalty, REMARKS.











\* Indicate Type of Property: R-Residential, C-Commercial, I-Industrial, U-Utility, F-Farm, L-Lakeshore, T-Timber, M-Mineral

Form 30 MILLER-DAVIS CO., MINNEAPOLIS

Table with columns: IN WHOSE NAME ASSESSED, DESCRIPTION OF PROPERTY, TRUE AND FULL VALUATIONS (LAND, BUILDINGS, MACHINERY, TOTAL), ASSESSED VALUATIONS (RURAL, ALL OTHER, TOTAL ASSESSED), FINAL EQUALIZED VALUE, and REMARKS.

Table with columns: VALUATIONS BY SCHOOL DISTRICTS AS EQUALIZED BY DEPARTMENT OF TAXATION, TAXES (SOLD FOR, PAID, WHEN PAID), SPECIAL TAXES, TOTAL TAXES, PAID, WHEN PAID, Number of Receipt, March Settlement 1963, June Settlement 1963, November Settlement 1963, Delinquent on First Monday in January 1964, Total Delinquent Tax and Penalty, and REMARKS.

Vertical text on the right edge of the page, including property names and addresses such as 'Horseshoe Beach', 'Pecho Hill', and 'El Sueno'.











\* Indicate Type of Property: R-Residential, C-Commercial, I-Industrial, U-Utility, F-Farm, L-Lakeshore, T-Timber, M-Mineral

Table with columns: IN WHOSE NAME ASSESSED, SUBDIVISION, Sec. or Lot, Town or Rng. Block, Number of Acres of Land, No. School District, Ind. rate, Agri. or Homestead, etc. Rows include Darrell J. + LaVanche M. Somers, Elmer + Ada Doty, Adolph + Vernetta Bieniek, Village of Backus, Kermit + Betty Zaffke, Ross E. + Dorothy E. Baker, Hans W. + Ruth A. Strave, K.A.E. + Rhoda Lehto, John + Adella Scherman, Doyle + Addline Underhill, Myrtle Willfert.

(CONT NEXT PAGE)

Table with columns: VALUATIONS BY SCHOOL DISTRICTS AS EQUALIZED BY DEPARTMENT OF TAXATION, District No., District Rate, Tax including State Homestead, State Tax on Non-Homestead, SPECIAL TAXES, TOTAL TAXES, PAID, WHEN PAID, Number of Receipt, March Settlement 1963, June Settlement 1963, November Settlement 1963, Collections to First Monday in January 1964, Delinquent on First Monday in January 1964, Total Delinquent Tax and Penalty, REMARKS. Rows include H 210, H 40, H 183, H 38, H 292, H 80, H 79, H 76, H 113, H 163, H 67, H 80, H 295, H 101, H 166, H 1120, H 571, H 691.

Lakeshore Beach, Des Moines Beach, Horseshoe Beach, Echo Hill, El Seno, Wilmette Shores















Assessment Roll and Tax List of Real Property in the Town of Powers

\* Indicate Type of Property: R-Residential, C-Commercial, I-Industrial, U-Utility, F-Farm, L-Lakeshore, T-Timber, M-Mineral

Cass County, Minnesota, for Taxes for the Year 1962.

Table with columns: IN WHOSE NAME ASSESSED, SUBDIVISION, No. School District, Indicate Homestead, Acreage, TRUE AND FULL VALUATIONS (7-10% LAND, BUILDINGS, MACHINERY, TOTAL), ASSESSED VALUATIONS (RURAL, ALL OTHER, MACHINERY, Seasonal and Recreational Cabins, TOTAL ASSESSED VALUE), FINAL EQUALIZED VALUE.

Table with columns: VALUATIONS BY SCHOOL DISTRICTS AS EQUALIZED BY DEPARTMENT OF TAXATION (District No., Rate, Mills), Tax Including State Homestead, State Tax on Non-Homestead, SPECIAL TAXES, TOTAL TAXES, PAID, WHEN PAID, Number of Receipt, March Settlement 1961, June Settlement 1963, November Settlement 1963, Penalty, Collections to First Monday in January 1964, Delinquent on First Monday in January 1964, TOTAL Delinquent Tax and Penalty, REMARKS.

Vertical text on the right edge of the page, including 'Lakeshore', 'Des Moines Beach', 'Horseshoe Beach', 'Somo Hill', 'El Sueño', 'Wildmore Beach', 'Vintners Acres'.



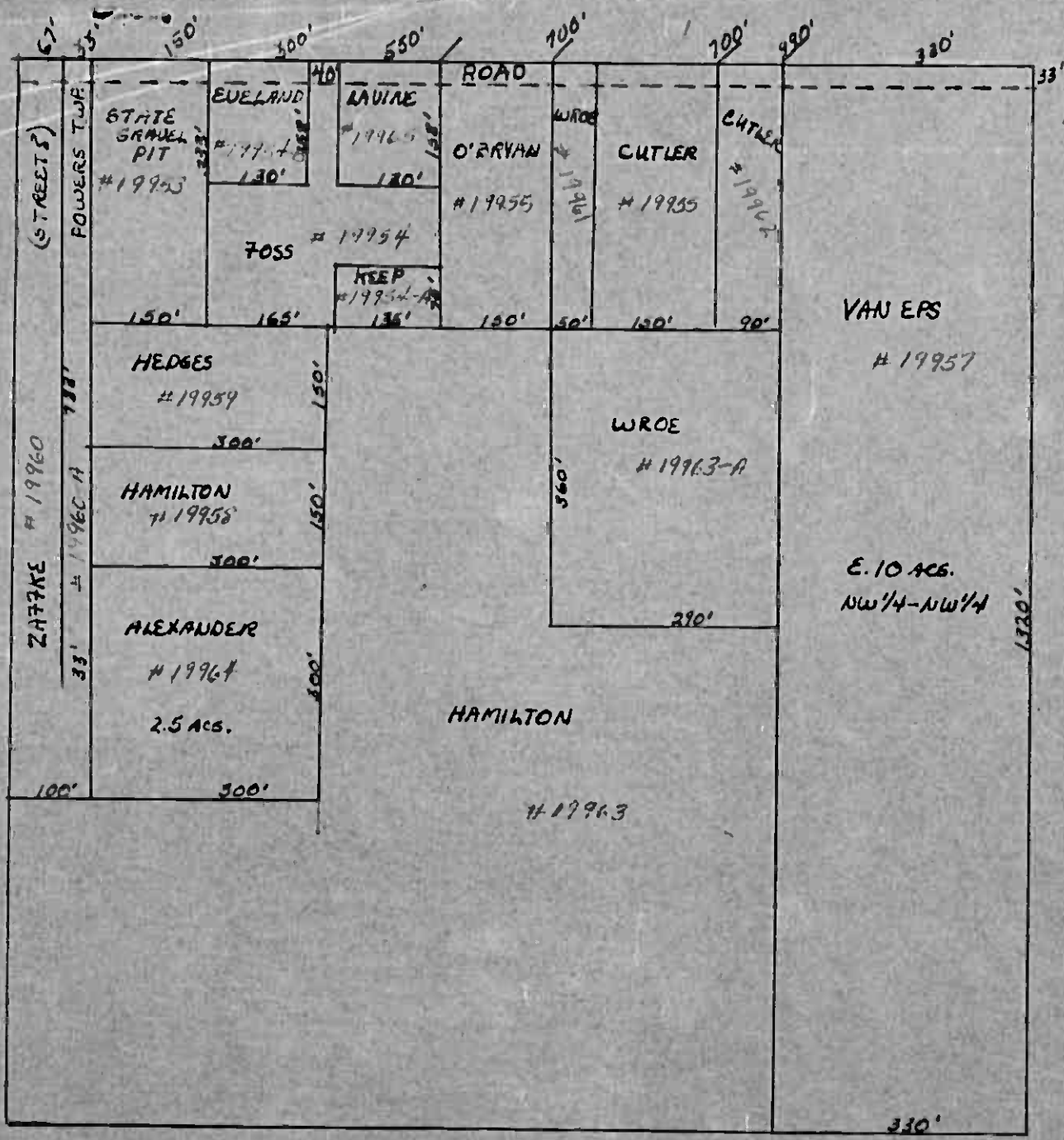
\* Indicate Type of Property: R-Residential, C-Commercial, I-Industrial, U-Utility, F-Farm, L-Lakeshore, T-Timber, M-Mineral

Table with columns: IN WHOSE NAME ASSESSED, DESCRIPTION OF PROPERTY, TRUE AND FULL VALUATIONS, ASSESSED VALUATIONS, VALUATIONS BY SCHOOL DISTRICTS AS EQUALIZED BY DEPARTMENT OF TAXATION, TAX INCLUDING STATE HOMESTEAD, SPECIAL TAXES, PAID, WHEN PAID, Number of Receipt, March Settlement 1963, June Settlement 1963, November Settlement 1963, Collections to First Monday in January 1964, Delinquent on First Monday in January 1964, Total Delinquent Tax and Penalty, REMARKS.

(CONT. NEXT PAGE)

Woodland, Lakeshore, Des Moines Beach, Horseshoe Beach, Echo Hill, El Sano, Timber Beach, Shores





NW 1/4 - NW 1/4  
32-139-30













ADA  
AVE.

66'

147.3'

CLAUDE

WILHARM

CREEK

10' strip exception

335.6'

147.3'

122° 46'

DAM

P L A T  
O F E L D O S H O R E

189.8'

230.3'

105'

107'

BOWEN LAKE































\* Indicate Type of Property: R-Residential, C-Commercial, I-Industrial, U-Utility, F-Farm, L-Lakeshore, T-Timber, M-Mineral

Form 50 MILLER-DAVIS CO., MINNEAPOLIS

Main table with columns: IN WHOSE NAME ASSESSED, DESCRIPTION OF PROPERTY, TRUE AND FULL VALUATIONS, ASSESSED VALUATIONS, VALUATIONS BY SCHOOL DISTRICTS AS EQUALIZED BY DEPARTMENT OF TAXATION, TAX INCLUDING STATE HOMESTEAD, SPECIAL TAXES, TOTAL TAXES, PAID, WHEN PAID, Number of Receipt, March Settlement 1963, June Settlement 1963, November Settlement 1963, Collections to First Monday in January 1964, Delinquent on First Monday in January 1964, Total Delinquent Tax and Penalty, REMARKS.

Woodland  
Miller Point  
Real Estate

Lakeshore  
Rainy Lake  
Edo Shore  
Des Moines  
Beach  
Sandborn  
Beach  
Ebo Hill  
El Seno  
Beach  
Milmere  
Beach  
Shores



Indicate Type of Property: R-Residential, C-Commercial, I-Industrial, U-Utility, F-Farm, L-Lakeshore, T-Timber, M-Mineral

Table with columns: IN WHOSE NAME ASSESSED, DESCRIPTION OF PROPERTY, TRUE AND FULL VALUATIONS, ASSESSED VALUATIONS, VALUATIONS BY SCHOOL DISTRICTS, TAXES, PAID, WHEN PAID, Number of Receipt, March Settlement, June Settlement, November Settlement, Collections to First Monday in January, Delinquent on First Monday in January, Total Delinquent Tax and Penalty, REMARKS.







\* Indicate Type of Property: R-Residential, C-Commercial, I-Industrial, U-Utility, F-Farm, L-Lakeshore, T-Timber, M-Mineral

Woodland  
Des Moines Beach  
Horseshore Beach

IN WHOSE NAME ASSESSED  
Eugene + Evangeline A. Dahl  
Laurence J. + Frances M. Sullivan  
Verna Vialon  
J. H. + Margaret Milroy  
Don O. Newland + Jean Swales +int.  
John W. + Lois Guderjahn

Table with columns: DESCRIPTION OF PROPERTY, TRUE AND FULL VALUATIONS (LAND, BUILDINGS, MACHINERY, TOTAL), ASSESSED VALUATIONS (RURAL, ALL OTHER), and FINAL EQUALIZED VALUE. Includes handwritten entries for property owners and valuations.

Table with columns: VALUATIONS BY SCHOOL DISTRICTS AS EQUALIZED BY DEPARTMENT OF TAXATION, TAX INCLUDING STATE HOMESTEAD, SPECIAL TAXES, TOTAL TAXES, PAID, WHEN PAID, Number of Receipt, March Settlement 1963, June Settlement 1963, November Settlement 1963, Collections to First Monday in January 1964, Delinquent on First Monday in January 1964, Total Delinquent Tax and Penalty, REMARKS. Includes handwritten entries for tax amounts and payment dates.

Woodland  
Lakeshore  
Eldo Shores  
Sawtooth  
Hillside  
Echo Hill  
El Sueno  
Wilmore  
Vermont  
Shores











Assessment Roll and Tax List of Real Property in the Town of Powers

\* Indicate Type of Property: R-Residential, C-Commercial, I-Industrial, U-Utility, F-Farm, L-Lakeshore, T-Timber, M-Mineral

Form 30 MILLER-DAVIS CO., MINNEAPOLIS

Table with columns: IN WHOSE NAME ASSESSED, El Sueno SUBDIVISION, Lot, No. School District, Indicate Homestead, Acres, TRUE AND FULL VALUATIONS (LAND, BUILDINGS, MACHINERY, TOTAL), ASSESSED VALUATIONS (RURAL, ALL OTHER, MACHINERY, Seasonal and Recreational Cabins, TOTAL ASSESSED VALUE), FINAL EQUALIZED VALUE.

Handwritten names: Roy W. + Gertrude Curmey, Paul L. Britz, John Cernyar, Nicholas A. Norman, John Cernyar, Floiran M. + Lila M. Pisula, Bernel E. Deslauriers, Emma R. Bullis, Sacred Heart Intl. Foundation Fund Inc., Paul L. Britz, Jose A. + Lena Escamilla, J. A. + Lena Escamilla, Paul L. Britz.

Cass County, Minnesota, for Taxes for the Year 1962.

Table with columns: SOLD FOR TAXES, VALUATIONS BY SCHOOL DISTRICTS AS EQUALIZED BY DEPARTMENT OF TAXATION, Tax including State Homestead, State Tax on Non-Homestead, SPECIAL TAXES, TOTAL TAXES, PAID, WHEN PAID, Number of Receipt, March Settlement 1963, June Settlement 1963, November Settlement 1963, Collections to First Monday in January 1964, Delinquent on First Monday in January 1964, Total Delinquent Tax and Penalty, REMARKS.

Handwritten notes and numbers: 1 28 756 24 780, 2 28 756 24 780, 3 28 756 24 780, 4 28 756 24 780, 5 28 756 24 780, 6 28 756 24 780, 7 28 756 24 780, 8 28 756 24 780, 9 38 1026 32 1058, 10 424 11446 362 11808, 11 172 4642 146 4788, 12 137 3356 116 3472, 13 38 930 32 962, 14 275 6736 234 6970, 15 38 930 32 962, 16 38 1026 32 1058, 17 38 1026 32 1058, 18 38 1026 32 1058, 19 38 1026 32 1058, 20 488 1010 1498 11952 4274 140492.

Vertical text on the right edge: Lakeshore, Eldo Shores, Sandborn Heights, Echo Hill, Gillespie, Wildmere Beach, Vincent's Shores.











\* Indicate Type of Property: R-Residential, C-Commercial, I-Industrial, U-Utility, F-Farm, L-Lakeshore, T-Timber, M-Mineral

El Suono Beach, Wildmore Beach, El Suono Beach, Horseshore Beach, Eldo Shores, Highland's Lakeshore on Rainy Lake

Table with columns: IN WHOSE NAME ASSESSED, Eldo Shore SUBDIVISION, Description of Property, TRUE AND FULL VALUATIONS (LAND, BUILDINGS, MACHINERY, TOTAL), ASSESSED VALUATIONS (RURAL, ALL OTHER), and FINAL EQUALIZED VALUE.

Table with columns: VALUATIONS BY SCHOOL DISTRICTS AS EQUALIZED BY DEPARTMENT OF TAXATION, TAXES (SOLID FOR TAXES), SPECIAL TAXES, TOTAL TAXES, PAID, WHEN PAID, Number of Receipt, March Settlement, June Settlement, Penalty, November Settlement, Collections to First Monday in January 1964, Delinquent on First Monday in January 1964, Total Delinquent Tax and Penalty, REMARKS.

Enger's Birchwood Acres, Plat of Vincents Overlake Shores, Sandborn Heights, Echo Hill, Gillespie's Sub-dv Shores



Indicate Type of Property: R-Residential, C-Commercial, I-Industrial, U-Utility, F-Farm, L-Lakeshore, T-Timber, M-Mineral

Haaland's Lakeshore on Rainy Lake, Eldo Shores, Sanborn Heights, El Suono, Tidmore Beach

Table with columns: IN WHOSE NAME ASSESSED, Sanborn Heights SUBDIVISION, Description of Property, True and Full Valuations (Land, Buildings, Machinery, Total), Assessed Valuations (Rural, All Other, Machinery, Seasonal/Recreational, Total Assessed), Final Equalized Value.

Table with columns: VALUATIONS BY SCHOOL DISTRICTS AS EQUALIZED BY DEPARTMENT OF TAXATION, District No., Rate, Tax including State Homestead, State Tax on Non-Homestead, SPECIAL TAXES, TOTAL TAXES, PAID, WHEN PAID, Number of Receipt, March Settlement 1963, June Settlement 1963, November Settlement 1963, Collections to First Monday in January 1964, Delinquent on First Monday in January 1964, Total Delinquent Tax and Penalty, REMARKS.

Plat of Vincents, Echo Hill, Gillespie's Sub-div. Shores



\* Indicate Type of Property: R-Residential, C-Commercial, I-Industrial, U-Utility, F-Farm, L-Lakeshore, T-Timber, M-Mineral

Haaland's Lakeshore on Rainy Lake, Eldo Shores, Sanborn Heights, Echo Hill, El Suono, Wildmere Beach

Table with columns: IN WHOSE NAME ASSESSED, ECHO HILL SUBDIVISION, PART of Lot 2 - Sec. 24-139-30, Description of Property, True and Full Valuations (Land, Buildings, Machinery, Total), Assessed Valuations (Rural, All Other, Machinery, Seasonal, Total Assessed), Final Equalized Value.

Table with columns: VALUATIONS BY SCHOOL DISTRICTS AS EQUALIZED BY DEPARTMENT OF TAXATION, District No., Rate, Tax Including State Homestead, State Tax on Non-Homestead, SPECIAL TAXES, TOTAL TAXES, PAID, WHEN PAID, Number of Receipt, March Settlement 1963, June Settlement 1963, November Settlement 1963, Collections to First Monday in January 1964, Delinquent on First Monday in January 1964, Total Delinquent Tax and Penalty, REMARKS.

Summary totals for Valuations: 865, 3687, 3916, 92, 401, 1423, 3356, 44307, 101, 440, 123, 26, 206, 367.

Summary totals for Taxes: 705, H 152, 221, 64, 308, 80, 1620, 54664, 1144, 2049, 53044.

Vertical text on the right edge: Vincents, Harwood Point, Northern Estates, Gillespie's Sub-d-v Shores







\* Indicate Type of Property: R-Residential, C-Commercial, I-Industrial, U-Utility, F-Farm, L-Lakeshore, T-Timber, M-Mineral

Haaland's Lakeshore on Rainy Lake, Eldo Shores, Sanborn Heights, Echo Hill, Vincent's Sub-Div 4 Point Shores

Table with columns: IN WHOSE NAME ASSESSED, DESCRIPTION OF PROPERTY, TRUE AND FULL VALUATIONS (LAND, BUILDINGS, MACHINERY, TOTAL), ASSESSED VALUATIONS (RURAL, ALL OTHER, TOTAL ASSESSED), FINAL EQUALIZED VALUE, SOLD FOR TAXES.

Table with columns: VALUATIONS BY SCHOOL DISTRICTS AS EQUALIZED BY DEPARTMENT OF TAXATION, Tax including State Homestead, State Tax on Non-Homestead, SPECIAL TAXES, TOTAL TAXES, PAID, WHEN PAID, Number of Receipt, March Settlement 1961, June Settlement 1961, November Settlement 1961, Collections to First Monday in January 1962, Delinquent on First Monday in January 1962, Total Delinquent Tax and Penalty, REMARKS.

Haaland's Lakeshore on Rainy Lake, Eldo Shores, Sanborn Heights, Echo Hill, Vincent's Sub-Div 4 Point Shores, Haaland's Lakeshore on Rainy Lake, Eldo Shores, Sanborn Heights, Echo Hill, Vincent's Sub-Div 4 Point Shores







Assessment Roll and Tax List of Real Property in the Town of Powers, Cass County, Minnesota, for Taxes for the Year 1962.

Plat of Vincents in Wood Acres, Plat of Vincents in Oxyoke Shores, Sanborn Heights, Echo Hill, Plat of Vincents in Sub-Div 4 Point Shores

Table with columns: IN WHOSE NAME ASSESSED, DESCRIPTION OF PROPERTY, TRUE AND FULL VALUATIONS (LAND, BUILDINGS, MACHINERY, TOTAL), ASSESSED VALUATIONS (RURAL, ALL OTHER), FINAL EQUALIZED VALUE, and various tax-related fields.

Table with columns: VALUATIONS BY SCHOOL DISTRICTS AS EQUALIZED BY DEPARTMENT OF TAXATION, TAX INCLUDING STATE HOMESTEAD, SPECIAL TAXES, TOTAL TAXES, PAID, WHEN PAID, Number of Receipt, March Settlement 1963, June Settlement 1963, Penalty, November Settlement 1963, Penalty, Collections to First Monday in January 1964, Delinquent on First Monday in January 1964, Total Delinquent Tax and Penalty, and REMARKS.

Hardwood Point, Northern States







\* Indicate Type of Property: R-Residential, C-Commercial, I-Industrial, U-Utility, F-Farm, L-Lakeshore, T-Timber, M-Mineral

Table with columns: IN WHOSE NAME ASSESSED, DESCRIPTION OF PROPERTY, TRUCK AND FULL VALUATIONS, ASSESSED VALUATIONS, FINAL EQUALIZED VALUE. Includes handwritten entries like 'Northern Estates SUBDIVISION' and 'GOUT LOT 5 + PART of GOUT LOT 6-SEC 26-139-30'.

Table with columns: VALUATIONS BY SCHOOL DISTRICTS AS EQUALIZED BY DEPARTMENT OF TAXATION, Tax Including State Homestead, SPECIAL TAXES, TOTAL TAXES, PAID, WHEN PAID, Number of Receipt, March Settlement 1963, June Settlement 1963, November Settlement 1963, Collections to First Monday in January 1964, Delinquent on First Monday in January 1964, Total Delinquent Tax and Penalty, REMARKS. Includes handwritten notes like 'PAID IN FULL MAY 16 1963'.

Vertical text on the left margin: Enger's Birch Wood Acres, Plat of Vincents 4 Point Shores, Hardwood Point, Northern Estates, Plat of Vincents 4 Point Shores.



Assessment Roll and Tax List of Real Property in the Town of Powers

\* Indicate Type of Property: R-Residential, C-Commercial, I-Industrial, U-Utility, F-Farm, L-Lakeshore, T-Timber, M-Mineral

Form 50

Plat of Vincents Wood Acres, Plat of Vincents Oxyoke Shores, Hardwood Point, Northern Estates, Plat of Vincents Sub-Div 4 Point Shores

Table with columns: IN WHOSE NAME ASSESSED, SUBDIVISION, No. School District, Ind. rate, Agr. or Sea, No. of Acres, TRUE AND FULL VALUATIONS (LAND, BUILDINGS, MACHINERY, TOTAL), ASSESSED VALUATIONS (RURAL, ALL OTHER, MACHINERY, Seasonal and Recreational Cabins, TOTAL ASSESSED VALUE), FINAL EQUALIZED VALUE.

Northern Shores, Inc.

A. O. + Mabel Wilson

Northern Shores, Inc.

"

"

"

"

"

"

"

"

"

Cass County, Minnesota, for Taxes for the Year 1962.

Table with columns: VALUATIONS BY SCHOOL DISTRICTS AS EQUALIZED BY DEPARTMENT OF TAXATION, Tax Including State Homestead, State Tax on Non-Homestead, SPECIAL TAXES, TOTAL TAXES, PAID, WHEN PAID, Number of Receipt, March Settlement 1963, June Settlement 1963, Penalty, November Settlement 1963, Collections to First Monday in January 1964, Delinquent on First Monday in January 1964, Total Delinquent Tax and Penalty, REMARKS.

615 16610 520 17130







