

Assessment & Tax list - 1959

Powers





Assessment of

Form 335

NAME OF OWNER

TABULAR SCHEDULE OF VALUATIONS,

LEVIED IN THE Town OF Powers

RATES AND TAXES

COUNTY OF CASS, STATE OF MINNESOTA

School District No.	VALUATION BY SCHOOL DISTRICTS				RATE OF STATE TAXES		RATE OF COUNTY TAXES							RATE OF TOWN TAXES							SCHOOL TAXES		TAXES LEVIED																	
	Dollars	Dollars	Dollars	Total Value of all Property except Money and Credits Dollars	Mills	Mills	Mills	Mills	Mills	Mills	Mills	Mills	Mills	Mills	Mills	Mills	Mills	Mills	Mills	Mills	Mills	Mills	Mills	Mills	Mills	Mills	Mills	LOCAL 1 MILL AND SPECIAL SCHOOL TAXES BY DISTRICTS					ALL OTHER TAXES							
																												Local 1 Mill	Special	State Loan	Def.	E. O.	P. P.	Total School Taxes	FUNDS	Rate	Amounts			
114	22,287	25,410	3373	57,143	8.10	25.68	15.61	6.95	5.79	129.04	5.11	6.0	5.0	5.16	25.38	38.89	26.2	4.1	26.2	4.1	93.89	252.63	118.89	277.63	641.50	1574.15	990.22	672.29	105.21	124.93	824.85	129.08	2409.22	3743.01	State - Non-Homestead, State - Homestead,	264.80	515.96			
Un	3601	7025	na	1752	12,378	N.H.	6.24	14.32	Co. Nurse	2.1	Co. Nurse	2.5	Co. Nurse	1.12																										
Assessed Value Homestead	20,164	872		21,036																																				
Non-Homestead	33,663	3624	11,198	48,485																																				
Total	53,827	4496	11,198	69,521																																				

Total Number of Acres 12,304.60

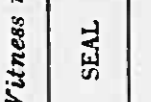
Total Levy, \$ 19,390.80

I, L. C. Peterson, Auditor of said County and State aforesaid, do hereby certify that the foregoing is a true and correct Schedule, showing the valuation of all the taxable property, in the several Tax Funds levied thereon for the year A. D. 1959.

Witness my hand and official seal, this 31st day of December, A. D. 1959.

L. C. Peterson County Auditor  
By Helen Belton Deputy

Total Taxes Real Estate 16,297.12  
 Pers Prop. 3,093.68  
 Total 19,390.80



Millers Point  
 Woodland  
 Des Moines Beach  
 Horseshoe Beach  
 El Sano

Assessment of

Form 34 SHILLER-DAY COMPANY, MINNEAPOLIS

COLLECTIONS OF TAXES OF 1959

*Town* OF *Roseville*

CASS COUNTY, MINNESOTA

NAME OF OWNER	FUNDS	MARCH SETTLEMENT	JUNE SETTLEMENT	NOV. SETTLEMENT	Amount Collected from Nov. 1958 to First Monday in Jan. 1959	REDUCTIONS	Total Reductions and Collected	BALANCE UNCOLLECTED	ADDITIONS	Total Uncollected to First Monday in January, 1959
		1959	1959	1959						
	State-Non-Homestead	3251	15324	5179	166					
	State-Homestead	492	30822	10161	408					
	County Revenue	36420	137492	47284	924					
	County Road and Bridge	15310	57802	19880	388					
	County Welfare	63234	238723	82106	1605					
	County Bond and Interest, Transp.	1143	4316	1484	29					
	R. T. B. S. P.	5104	19267	6626	129					
	PERA	5910	22311	7674	150					
	Co. Nurse	2042	7707	2652	52					
	Town Revenue	5104	19267	6626	129					
	Town Road and Bridge	11840	44701	15375	301					
	Town Fire, Phone	5104								
	Town State Loan, Fire		19267	6626	129					
	R. + B. Bldg.	2042	7707	2652	52					
	Agric. Adm.	510	1927	663	13					
	School Local 1 Mill									
	School Special	43315	147759	47831	1272					
	School State Loan									
	Deficiency	48367	198034	77440	1154					
	Tuition									
	Transportation									
	C. O.	25034	91564	29715	648					
	PERA	4166	15702	5382	106					
		282808	1079692	375361	7655					

	SCHOOL DISTRICT NO.	LOCAL 1 MILL	SPECIAL	STATE LOAN	Def.	C. O.	PERA	TOTALS
MARCH SETTLEMENT	114-a		6457		9967	6767	1059	24250
	114-na		81799		24543	16663	2607	75612
	Un-na		5059		13857	1604	500	21020
	Totals		48315		48367	25034	4166	120882
JUNE SETTLEMENT	114-a		33264		51347	34861	5405	124927
	114-na		91393		70537	47840	7494	217314
	Un-na		18402		50400	5833	1822	76462
	Un-a		4700		25745	2980	931	34356
Totals		147759		198034	91564	15702	453059	
NOVEMBER SETTLEMENT	114 a		12330		19032	12922	2022	46506
	un a		2403		13164	1524	476	17567
	un na		10015		27429	3174	991	41609
	114 na		23083		17815	12045	1843	54886
Totals		47831		77440	29715	5382	160368	
NOVEMBER to JANUARY	un na		88		240	28	09	365
	114 na		1184		414	620	97	2815
Totals		1272		1154	648	106	3180	
ADDITIONS	School District No.							
Totals								
REDUCTIONS	School District No.							
Totals								

Millers Point  
 Woodland  
 Des Moines Beach  
 Horseshoe Beach  
 Murray Beach  
 El Sueno

Assessment Roll and Tax List of Real Property in the Town of Powers

Cass County, Minnesota, for Taxes for the Year 1959.

Indicate Type of Property: R-Residential, C-Commercial, I-Industrial, U-Utility, F-Farm, L-Lakeshore, T-Timber, M-Mineral

Table with columns: IN WHOSE NAME ASSESSED, TO WHOM TRANSFERRED, DESCRIPTION OF PROPERTY, TRUE AND FULL VALUATIONS, ASSESSED VALUATIONS, VALUATIONS BY SCHOOL DISTRICTS AS EQUALIZED BY DEPARTMENT OF TAXATION, TAXES, PAID, WHEN PAID, etc.

Vertical text on the right edge: Millers Point, Woodland, Des Moines Beach, Horseshoe Beach, Huron Beach, El Sueno



Assessment Roll and Tax List of Real Property in the Town of Pine Grove, Cass County, Minnesota

Indicate Type of Property: R-Residential, C-Commercial, I-Industrial, U-Utility, F-Farm, L-Lakeshore, T-Timber, M-Mineral

Cass County, Minnesota, for Taxes for the Year 1959.

Table with columns: IN WHOSE NAME ASSESSED, TO WHOM TRANSFERRED, DESCRIPTION OF PROPERTY, TRUE AND FULL VALUATIONS, ASSESSED VALUATIONS, VALUATIONS BY SCHOOL DISTRICTS AS EQUALIZED BY DEPARTMENT OF TAXATION, TAXES, PAID, WHEN PAID, and REMARKS. Includes handwritten entries for property owners like Louis O. & Mary M. Cochariers and Amalia Mooney & Dorothy Franklin.

Vertical text on the right edge of the page: Millers Point, Woodland, Des Moines Beach, Horseshoe Beach, Huron Beach, El Sueno



Assessment Roll and Tax List of Real Property in the Town of Powers

Cass County, Minnesota, for Taxes for the Year 1959.

Indicate Type of Property: R-Residential, C-Commercial, I-Industrial, U-Utility, F-Farm, L-Lakeshore, T-Timber, M-Mineral

Table with columns: IN WHOSE NAME ASSESSED, TO WHOM TRANSFERRED, DESCRIPTION OF PROPERTY, TRUE AND FULL VALUATIONS, ASSESSED VALUATIONS, VALUATIONS BY SCHOOL DISTRICTS AS EQUALIZED BY DEPARTMENT OF TAXATION, TAXES, PAID, WHEN PAID, Number of Receipt, March Settlement 1960, June Settlement 1960, November Settlement 1960, Collections to First Monday in January 1961, Delinquent on First Monday in January 1961, Total Delinquent Tax and Penalty, REMARKS.

Millers Point, Woodland, Des Moines Beach, Horseshoe Beach, El Sueno

Assessment Roll and Tax List of Real Property in the Town of Powers

\* Indicate Type of Property: R-Residential, C-Commercial, I-Industrial, U-Utility, F-Farm, L-Lakeshore, T-Timber, M-Mineral

Cass County, Minnesota, for Taxes for the Year 1959.

Table with columns: IN WHOSE NAME ASSESSED, TO WHOM TRANSFERRED, DESCRIPTION OF PROPERTY, TRUE AND FULL VALUATIONS, ASSESSED VALUATIONS, VALUATIONS BY SCHOOL DISTRICTS AS EQUALIZED BY DEPARTMENT OF TAXATION, TAXES, PAID, WHEN PAID, Number of Receipt, March Settlement 1960, June Settlement 1960, November Settlement 1960, Collections to First Monday in January 1961, Delinquent on First Monday in January 1961, Total Delinquent Tax and Penalty, REMARKS.

Millers Point, Woodland, Des Moines Beach, Horseshoe Beach, Curvey Beach, El Sueno





Assessment Roll and Tax List of Real Property in the Town of Green of County Green

\* Indicate Type of Property: R-Residential, C-Commercial, I-Industrial, U-Utility, F-Farm, L-Lakeshore, T-Timber, M-Mineral

Form 500 MILLER-DAY CO., MINNEAPOLIS

IN WHOSE NAME ASSESSED	TO WHOM TRANSFERRED	DESCRIPTION OF PROPERTY				TRUE AND FULL VALUATIONS											FINAL EQUALIZED VALUE
		SUBDIVISION	Sec. or Lot	Town or Block	Number of Acres of Land	RURAL			ALL OTHER				MACHINERY Permanently Attached to Real Estate	TOTAL ASSESSED VALUE	Total Assessed Value as Equalized by the Board of Review		
						Homestead Up to \$1,000 20%	Over \$1,000 and Non-Homestead 33 1/3%	Timber Land Class 3c 20%	Homestead Up to \$1,000 25%	Over \$1,000 and Non-Homestead 40%							
M.A. & John C. & Florence Dumont		N 1/2 of NE 1/4 less 265' x 800' x 800' x 272.5'	8	V39	30	70										102	
State of Minnesota																	
Maryjorie B. Dumont		N 1/2 of NE 1/4 less 265' x 800' x 800' x 272.5'	30													43	
Walter & Helene Markula		East Lot 1	33													66	
Maryjorie B. Dumont			40													47	
Walter & Helene Markula		7250' of W. 700' of Lot 2														78	
Duane E. & Edith Enger			40														
Walter Myers		East Lot 2	32			85										147	
Lila L. & Moses J. Zaffke		less E. 1rd.	40														
Duane E. & Edith Enger																	
Liquid Oak		N 1/2 of N 1/2 of NE 1/4 of NW 1/4	10														
N. W. Paper			40														
Adella Benrose			40														
Walter Myers		East of SW 1/4 of SW 1/4	40														

Cass County, Minnesota, for Taxes for the Year 1959.

SOLD FOR TAXES	VALUATIONS BY SCHOOL DISTRICTS AS EQUALIZED BY DEPARTMENT OF TAXATION						Tax including State Homestead	State Tax on Non-Homestead	SPECIAL TAXES	TOTAL TAXES	PAID	WHEN PAID	Number of Receipt	March Settlement 1960	June Settlement 1960	Penalty	November Settlement 1960	Penalty	Collections to First Monday in January 1961	Penalty	Delinquent on First Monday in January 1961	Total Delinquent Tax and Penalty	REMARKS	
	District No.	District No.	District No.	District No.	District No.	District No.																		
	Rate	Rate	Rate	Rate	Rate	Rate																		
1	102						2576	64	2640	1	PAID IN FULL	MAY 31 1960	12785		2640							9234		
2										2														
3										3														
4										4														
5										5														
6	23						582	14	596	6	PAID IN FULL	MAY 31 1960	12785		596								9234	
7										7														
8	66						1668	42	1710	8	PAID IN FULL	MAY 31 1960	12788		1710								9232	
9	47						1188	30	1218	9	PAID IN FULL	MAY 31 1960	12785		1218								9234	
10	78						1970	48	2018	10	PAID IN FULL	MAY 31 1960	12782		2018								9030	
11	86						2172	54	2226	11	1st HALF PAID	MAY 31 1960	10311		1113								1534	
12										12	PAID IN FULL	MAY 24 1960	8904		4088								9506	
13	64						1616	40	1616	13	2nd HALF PAID	OCT 31 1960	17303										808	
14	125						3258	70	3158	14	1st HALF PAID	MAY 31 1960	12823		808								9502	
15	27						682	16	698	15	PAID IN FULL	MAY 25 1960	12245		698								1579	
16	101						2552	62	2614	16	PAID IN FULL	MAY 31 1960	15823		2614								9231	
17										17														
18	101						2552	62	2614	18	2nd HALF PAID	OCT 31 1960	19304										1307	
19	112						2830	70	2900	19	1st HALF PAID	MAY 31 1960	12786		1450								2757x	
20	10						252	16	258	20	PAID IN FULL	MAY 24 1960	8904		258								954	
	187						3498	189	3498															
	753						13798	897	13798															
	942						27796	1084	27796															
																								2692

Millers Point  
Woodland  
Des Moines Beach  
Horseshoe Beach  
El Sueno

Assessment Roll and Tax List of Real Property in the Town of Powers

Indicate Type of Property: R-Residential, C-Commercial, I-Industrial, U-Utility, F-Farm, L-Lakeshore, T-Timber, M-Mineral

Form 501 MILLER-DANB CO., MINNEAPOLIS

Table with columns: IN WHOSE NAME ASSESSED, TO WHOM TRANSFERRED, SUBDIVISION, TRUE AND FULL VALUATIONS (LAND, BUILDINGS, MACHINERY, TOTAL), ASSESSED VALUATIONS (RURAL, ALL OTHER, MACHINERY, TOTAL ASSESSED), FINAL EQUALIZED VALUE.

Cass County, Minnesota, for Taxes for the Year 1959.

Table with columns: VALUATIONS BY SCHOOL DISTRICTS AS EQUALIZED BY DEPARTMENT OF TAXATION, TAX INCLUDING STATE HOMESTEAD, SPECIAL TAXES, TOTAL TAXES, PAID, WHEN PAID, Number of Receipt, March Settlement 1960, June Settlement 1960, Penalty, November Settlement 1960, Penalty, Collections to First Monday in January 1961, Penalty, Delinquent on First Monday in January 1961, Total Delinquent Tax and Penalty, REMARKS.

Vertical text on the right edge of the page: Millers Point, Woodland, Des Moines Beach, Horseshoe Beach, M. Sueno

Assessment Roll and Tax List of Real Property in the Town of Powers

Indicate Type of Property: R-Residential, C-Commercial, I-Industrial, U-Utility, F-Farm, L-Lakeshore, T-Timber, M-Mineral

Table with columns: IN WHOSE NAME ASSESSED, TO WHOM TRANSFERRED, DESCRIPTION OF PROPERTY, TRUE AND FULL VALUATIONS, ASSESSED VALUATIONS, FINAL EQUALIZED VALUE.

Cass County, Minnesota, for Taxes for the Year 1959.

Table with columns: VALUATIONS BY SCHOOL DISTRICTS AS EQUALIZED BY DEPARTMENT OF TAXATION, TAX INCLUDING STATE HOMESTEAD, SPECIAL TAXES, TOTAL TAXES, PAID, WHEN PAID, Number of Receipt, March Settlement 1960, June Settlement 1960, November Settlement 1960, Delinquent on First Monday in January 1961, Total Delinquent Tax and Penalty, REMARKS.

Vertical text on the right edge of the page: Millers Point, Woodland, Des Moines Beach, Horseshoe Beach, El Sueño.

Assessment Roll and Tax List of Real Property in the Town of Powers

Indicate Type of Property: R-Residential, C-Commercial, I-Industrial, U-Utility, F-Farm, L-Lakeshore, T-Timber, M-Mineral

Form 501 MILLER-DAVIS CO., MINNEAPOLIS

Table with columns: IN WHOSE NAME ASSESSED, TO WHOM TRANSFERRED, DESCRIPTION OF PROPERTY, TRUE AND FULL VALUATIONS, ASSESSED VALUATIONS, and FINAL EQUALIZED VALUE. Includes entries for Paul J. & Mary J. Eklund, Alfred B. & Hazel E. Bresson, Herman W. & Martha L. Wolf, Wendell M. & Louise Berger, Richard B. & Esther M. Gillespie, and Anthony J. & Charlotte H. Deblon.

(Continued Next page)

Cass County, Minnesota, for Taxes for the Year 1959.

Table with columns: SOLD FOR TAXES, VALUATIONS BY SCHOOL DISTRICTS AS EQUALIZED BY DEPARTMENT OF TAXATION, Tax Including State Homestead, State Tax on Non-Homestead, SPECIAL TAXES, TOTAL TAXES, PAID, WHEN PAID, Number of Receipts, March Settlement 1960, June Settlement 1960, Penalty, November Settlement 1960, Collections to First Monday in January 1961, Delinquent on First Monday in January 1961, Total Delinquent Tax and Penalty, and REMARKS. Includes handwritten entries for Paul J. & Mary J. Eklund and Richard B. & Esther M. Gillespie.

Vertical text on the right edge of the page: Millers Point, Woodland, Des Moines Beach, Horseshoe Beach, Huron Beach, El Sueno.



Assessment Roll and Tax List of Real Property in the Town of Powers

Indicate Type of Property: R-Residential, C-Commercial, I-Industrial, U-Utility, F-Farm, L-Lakeshore, T-Timber, M-Mineral

Form 501 MILLER-WATERS 2008 MINNESOTA

Table with columns: IN WHOSE NAME ASSESSED, TO WHOM TRANSFERRED, DESCRIPTION OF PROPERTY, TRUE AND FULL VALUATIONS, ASSESSED VALUATIONS (RURAL, ALL OTHER), TOTAL ASSESSED VALUE, Total Assessed Value as Equalized by the Board of Review, FINAL EQUALIZED VALUE.

173

Cass County, Minnesota, for Taxes for the Year 1959.

Table with columns: SOLD FOR TAXES, VALIDATIONS BY SCHOOL DISTRICTS AS EQUALIZED BY DEPARTMENT OF TAXATION, Tax including State Homestead, State Tax on Non-Homestead, SPECIAL TAXES, TOTAL TAXES, PAID, WHEN PAID, Number of Receipt, March Settlement 1960, June Settlement 1960, November Settlement 1960, Penalty, Collections to First Monday in January 1961, Delinquent on First Monday in January 1961, Total Delinquent Tax and Penalty, REMARKS.

75

2438

46

2484

1471

993

Miller's Point, Woodland, Des Moines Beach, Horseshoe Beach, Luroy Beach, El Sueno



Assessment Roll and Tax List of Real Property in the Town of Powers

Indicate Type of Property: R-Residential, C-Commercial, I-Industrial, U-Utility, F-Farm, L-Lakeshore, T-Timber, M-Mineral

Table with columns: IN WHOSE NAME ASSESSED, TO WHOM TRANSFERRED, SUBDIVISION, TRUE AND FULL VALUATIONS, ASSESSED VALUATIONS, FINAL EQUALIZED VALUE. Includes handwritten entries for Lots 1-5 and names like Andrew Breach and Judson La Moure Co.

Cass County, Minnesota, for Taxes for the Year 1959.

Table with columns: VALUATIONS BY SCHOOL DISTRICTS AS EQUALIZED BY DEPARTMENT OF TAXATION, TAXES, PAID, WHEN PAID, March Settlement, June Settlement, November Settlement, Collections to First Monday in January 1961, Delinquent on First Monday in January 1961, Total Delinquent Tax and Penalty, REMARKS. Includes handwritten entries for Lots 16-20 with tax amounts and payment dates.



Assessment Roll and Tax List of Real Property in the Town of Powers

\* Indicate Type of Property: R-Residential, C-Commercial, I-Industrial, U-Utility, F-Farm, L-Lakeshore, T-Timber, M-Mineral

Cass County, Minnesota, for Taxes for the Year 1959.

Table with columns: IN WHOSE NAME ASSESSED, TO WHOM TRANSFERRED, DESCRIPTION OF PROPERTY, TRUE AND FULL VALUATIONS, ASSESSED VALUATIONS, VALUATIONS BY SCHOOL DISTRICTS AS EQUALIZED BY DEPARTMENT OF TAXATION, SPECIAL TAXES, TOTAL TAXES, PAID, WHEN PAID, Number of Receipts, March Settlement 1960, June Settlement 1960, November Settlement 1960, Penalty, Collections to First Monday in January 1961, Delinquent on First Monday in January 1961, Total Delinquent Tax and Penalty, REMARKS.

Millers Point

Woodland

Des Moines Beach

Horseshoe Beach, Murray Beach, El Sueno

Assessment Roll and Tax List of Real Property in the Town of Boonville

Indicate Type of Property: R-Residential, C-Commercial, I-Industrial, U-Utility, F-Farm, L-Lakeshore, T-Timber, M-Mineral

Table with columns: IN WHOSE NAME ASSESSED, TO WHOM TRANSFERRED, DESCRIPTION OF PROPERTY, TRUE AND FULL VALUATIONS, ASSESSED VALUATIONS, FINAL EQUALIZED VALUE.

Cass County, Minnesota, for Taxes for the Year 1959.

Table with columns: SOLD FOR TAXES, VALUATIONS BY SCHOOL DISTRICTS AS EQUALIZED BY DEPARTMENT OF TAXATION, Tax including State Homestead, State Tax on Non-Homestead, SPECIAL TAXES, TOTAL TAXES, PAID, WHEN PAID, Number of Receipt, March Settlement 1960, June Settlement 1960, November Settlement 1960, Collections to First Monday in January 1961, Delinquent on First Monday in January 1961, Total Delinquent Tax and Penalty, REMARKS.

Millers Point, Woodland, Des Moines Beach, Horseshoe Beach, El Sueno

Assessment Roll and Tax List of Real Property in the Town of Powers

Indicate Type of Property: R-Residential, C-Commercial, I-Industrial, U-Utility, F-Farm, L-Lakeshore, T-Timber, M-Mineral

Form 50D MILLER-DAVIS CO., MINNEAPOLIS

Table with columns: IN WHOSE NAME ASSESSED, TO WHOM TRANSFERRED, DESCRIPTION OF PROPERTY, TRUE AND FULL VALUATIONS, ASSESSED VALUATIONS, and FINALE QUALIFIED VALUE. Includes handwritten entries for Myron L. & Beulah Griffith, Lulu & Henry Ahmann, etc.

Cass County, Minnesota, for Taxes for the Year 1959.

Table with columns: SOLD FOR TAXES, VALUATIONS BY SCHOOL DISTRICTS AS EQUALIZED BY DEPARTMENT OF TAXATION, SPECIAL TAXES, TOTAL TAXES, PAID, WHEN PAID, Number of Receipts, March Settlement 1960, June Settlement 1960, November Settlement 1960, Penalty, Collections to First Monday in January 1961, Delinquent on First Monday in January 1961, Total Delinquent Tax and Penalty, REMARKS. Includes handwritten entries for Myron L. & Beulah Griffith, Lulu & Henry Ahmann, etc.

Vertical text on the right edge of the page: Millers Point, Woodland, Des Moines Beach, Horseshoe Beach, Harry Beach, El Sueno

Assessment Roll and Tax List of Real Property in the Town of Powers

Indicate Type of Property: R-Residential, C-Commercial, I-Industrial, U-Utility, F-Farm, L-Lakeshore, T-Timber, M-Mineral

Form 500 MILLER-DAVIS CO., MINNEAPOLIS

Table with columns: IN WHOSE NAME ASSESSED, TO WHOM TRANSFERRED, DESCRIPTION OF PROPERTY, TRUCK AND FULL VALUATIONS, ASSESSED VALUATIONS, TOTAL ASSESSED VALUE, FINAL EQUALIZED VALUE.

Cass County, Minnesota, for Taxes for the Year 1959.

Table with columns: SOLD FOR TAXES, VALUATIONS BY SCHOOL DISTRICTS AS EQUALIZED BY DEPARTMENT OF TAXATION, Tax Including State Homestead, State Tax on Non-Homestead, SPECIAL TAXES, TOTAL TAXES, PAID, WHEN PAID, Number of Receipt, March Settlement 1960, June Settlement 1960, November Settlement 1960, Collections to First Monday in January 1961, Delinquent on First Monday in January 1961, Total Delinquent Tax and Penalty, REMARKS.

Vertical text on the right edge of the page: Millers Point, Woodland, Des Moines Beach, Horseshoe Beach, El Sueno.



Assessment Roll and Tax List of Real Property in the Town of Bowers

Indicate Type of Property: R-Residential, C-Commercial, I-Industrial, U-Utility, F-Farm, L-Lakeshore, T-Timber, M-Mineral

Table with columns: IN WHOSE NAME ASSESSED, TO WHOM TRANSFERRED, DESCRIPTION OF PROPERTY, TRUE AND FULL VALUATIONS, ASSESSED VALUATIONS, and FINAL EQUALIZED VALUE. Includes handwritten entries for Jean Mc Dowell and C. L. Curry.

Cass County, Minnesota, for Taxes for the Year 1959.

Table with columns: SOLD FOR TAXES, VALUATIONS BY SCHOOL DISTRICTS AS EQUALIZED BY DEPARTMENT OF TAXATION, Tax including State Homestead, State Tax on Non-Homestead, SPECIAL TAXES, TOTAL TAXES, PAID, WHEN PAID, Number of Receipt, March Settlement 1960, June Settlement 1960, November Settlement 1960, Collections on First Monday in January 1961, Delinquent on First Monday in January 1961, Total Delinquent Tax and Penalty, and REMARKS. Includes handwritten entries for Jean Mc Dowell and C. L. Curry.

Vertical text on the right edge of the page: Millers Point, Woodland, Des Moines Beach, Horseshoe Beach, El Sano.

Assessment Roll and Tax List of Real Property in the Town of Powers

Indicate Type of Property: R-Residential, C-Commercial, I-Industrial, U-Utility, F-Farm, L-Lakeshore, T-Timber, M-Mineral

Table with columns: IN WHOSE NAME ASSESSED, TO WHOM TRANSFERRED, DESCRIPTION OF PROPERTY, TRUE AND FULL VALUATIONS, ASSESSED VALUATIONS, and FINAL EQUALIZED VALUE. Includes handwritten entries for Blanche Zaffke, Lucille Arnie Jew, and Jean M. Dowell.

Cass County, Minnesota, for Taxes for the Year 1959.

Table with columns: SOLD FOR TAXES, VALUATIONS BY SCHOOL DISTRICTS AS EQUALIZED BY DEPARTMENT OF TAXATION, Tax including State Homestead, SPECIAL TAXES, TOTAL TAXES, PAID, WHEN PAID, Number of Receipt, March Settlement, June Settlement, Penalty, November Settlement, Penalty, Collections to First Monday in January 1961, Penalty, Delinquent on First Monday in January 1961, Total Delinquent Tax and Penalty, and REMARKS. Includes handwritten entries for Blanche Zaffke, Lucille Arnie Jew, and Jean M. Dowell.

Vertical text on the right edge of the page: Millers Point, Woodland, Des Moines Beach, Horseshoe Beach, Huron Beach, El Sueño.

Assessment Roll and Tax List of Real Property in the Town of Aurora of Aurora

\* Indicate Type of Property: R-Residential, C-Commercial, I-Industrial, U-Utility, F-Farm, L-Lakeshore, T-Timber, M-Mineral

Table with columns: IN WHOSE NAME ASSESSED, TO WHOM TRANSFERRED, DESCRIPTION OF PROPERTY, TRUE AND FULL VALUATIONS, ASSESSED VALUATIONS, and FINAL EQUALIZED VALUE. Includes handwritten entries for various lots and owners like Myrtle Reeve and Grace Johnson.

Cass County, Minnesota, for Taxes for the Year 1959.

Table with columns: VALUATIONS BY SCHOOL DISTRICTS AS EQUALIZED BY DEPARTMENT OF TAXATION, SOLD FOR TAXES, PAID, WHEN PAID, and REMARKS. Includes handwritten entries for various districts and payment dates.

Vertical text on the right edge of the page: Millers Point, Woodland, Des Moines Beach, Horseshoe Beach, Murray Beach, El Sueno.

Assessment Roll and Tax List of Real Property in the Town of Powers

Indicate Type of Property: R-Residential, C-Commercial, I-Industrial, U-Utility, F-Farm, L-Lakeshore, T-Timber, M-Mineral

Form SCD 1958-59

DESCRIPTION OF PROPERTY

TRUE AND FULL VALUATIONS

ASSESSED VALUATIONS

FINAL EQUALIZED VALUE

Table with columns: IN WHOSE NAME ASSESSED, TO WHOM TRANSFERRED, SUBDIVISION, Sec. of Lot, Town or Block, Rng., Number of Acres of Land, No. School District, Indicate Homestead, Indicate Agricultural, Indicate Type of Property, LAND Exclusive of Structures and Improvements, BUILDINGS and Other Structures, MACHINERY Permanently Attached to Real Estate, TOTAL True and Full Value, RURAL (Homestead, Over \$4,000 and Non-Homestead), ALL OTHER (Homestead, Over \$4,000 and Non-Homestead), MACHINERY Permanently Attached to Real Estate, TOTAL ASSESSED VALUE, Total Assessed Value as Equalized by the Board of Review, FINAL EQUALIZED VALUE.

Harwin + Concetta Fox

Orville J. + Lillian B. Callahan

Norman Donald

Leta J. ...

Cass County, Minnesota, for Taxes for the Year 1959.

Table with columns: SOLD FOR TAXES, VALUATIONS BY SCHOOL DISTRICTS AS EQUALIZED BY DEPARTMENT OF TAXATION (District No., Rate, etc.), Tax Including State Homestead, State Tax on Non-Homestead, SPECIAL TAXES, TOTAL TAXES, PAID, WHEN PAID (Month, Day, Year), Number of Receipt, March Settlement 1960, June Settlement 1960, Penalty, November Settlement 1960, Collections to First Monday in January 1961, Delinquent on First Monday in January 1961, Total Delinquent Tax and Penalty, REMARKS.

PAID IN FULL MAY 24 1960 8892

PAID IN FULL JUN 27 1960 16775

PAID IN FULL JUN 27 1960 16775

Vertical text on the right edge: Millers Point, Woodland, Des Moines Beach, Horseshoe Beach, Hurry Beach, El Sueño

Assessment Roll and Tax List of Real Property in the Town of Bowers

Indicate Type of Property: R-Residential, C-Commercial, I-Industrial, U-Utility, F-Farm, L-Lakeshore, T-Timber, M-Mineral

Form SCD

Table with columns: IN WHOSE NAME ASSESSED, TO WHOM TRANSFERRED, DESCRIPTION OF PROPERTY, TRUE AND FULL VALUATIONS, ASSESSED VALUATIONS, FINAL EQUALIZED VALUE.

(Continued next page) Fred Gerhardt

Cass County, Minnesota, for Taxes for the Year 1959.

Table with columns: VALUATIONS BY SCHOOL DISTRICTS AS EQUALIZED BY DEPARTMENT OF TAXATION, TAX INCLUDING STATE HOMESTEAD, SPECIAL TAXES, TOTAL TAXES, PAID, WHEN PAID, Number of Receipt, March Settlement 1960, June Settlement 1960, Penalty, November Settlement 1960, Collections to First Monday in January 1961, Delinquent on First Monday in January 1961, Total Delinquent Tax and Penalty, REMARKS.

Millers Point, Woodland, Des Moines Beach, Horseshoe Beach, Hurry Beach, El Seno



Assessment Roll and Tax List of Real Property in the Town of Powers

Indicate Type of Property: R-Residential, C-Commercial, I-Industrial, U-Utility, F-Farm, L-Lakeshore, T-Timber, M-Mineral

Form 5CD

Table with columns: IN WHOSE NAME ASSESSED, TO WHOM TRANSFERRED, DESCRIPTION OF PROPERTY, TRUE AND FULL VALUATIONS, ASSESSED VALUATIONS, FINAL EQUALIZED VALUE.

(Continued on next page)

Cass County, Minnesota, for Taxes for the Year 1959.

Table with columns: VALUATIONS BY SCHOOL DISTRICTS AS EQUALIZED BY DEPARTMENT OF TAXATION, Tax Including State Homestead, SPECIAL TAXES, TOTAL TAXES, PAID, WHEN PAID, Number of Receipt, March Settlement 1960, June Settlement 1960, Penalty, November Settlement 1960, Penalty, Collections to First Monday in January 1961, Penalty, Delinquent on First Monday in January 1961, Total Delinquent Tax and Penalty, REMARKS.

Millers Point, Woodland, Dos Moines Beach, Horseshoe Beach, Curvy Beach, El Sueño







Assessment Roll and Tax List of Real Property in the Town of Powers

Indicate Type of Property: R-Residential, C-Commercial, I-Industrial, U-Utility, F-Farm, L-Lakeshore, T-Timber, M-Mineral

Table with columns: IN WHOSE NAME ASSESSED, TO WHOM TRANSFERRED, DESCRIPTION OF PROPERTY, TRUE AND FULL VALUATIONS, ASSESSED VALUATIONS, FINAL EQUALIZED VALUE.

Handwritten notes and names: Norbert Stehr, Daniel Becker & Gladys B. Becker, Arthur C. & Eugenia Fittthaus, Arthur A. & Grace Ellen Breuch, Helen Walden, Otto L. & Eleanor S. Pehls, Harry A. & Caroline H. Veasch, Norbert Stehr.

519.00

Cass County, Minnesota, for Taxes for the Year 1959.

Table with columns: SOLD FOR TAXES, VALUATIONS BY SCHOOL DISTRICTS AS EQUALIZED BY DEPARTMENT OF TAXATION, Tax Including State Homestead, SPECIAL TAXES, TOTAL TAXES, PAID, WHEN PAID, Number of Receipt, March Settlement 1960, June Settlement 1960, Penalty, November Settlement 1960, Collections to First Monday in January 1961, Delinquent on First Monday in January 1961, Total Delinquent Tax and Penalty, REMARKS.

Handwritten calculations: 10384, 27082, 37466, 148, 37466.

354.64

34.50

Vertical text on the right edge: Millers Point, Woodland, Des Moines Beach, Horseshoe Beach, Luroy Beach, El Sueno, Mare.

Assessment Roll and Tax List of Real Property in the Town of Bowers

\* Indicate Type of Property: R-Residential, C-Commercial, I-Industrial, U-Utility, F-Farm, L-Lakeshore, T-Timber, M-Mineral

Table with columns: IN WHOSE NAME ASSESSED, TO WHOM TRANSFERRED, DESCRIPTION OF PROPERTY, TRUE AND FULL VALUATIONS, ASSESSED VALUATIONS, and FINAL EQUALIZED VALUE. Includes handwritten entries for S. P. Hanson, Otto L. + Eleanor S. Bekko, Geneva Bondy, and Robert + Inez Erickson.

Cass County, Minnesota, for Taxes for the Year 1959.

Table with columns: SOLD FOR TAXES, VALUATIONS BY SCHOOL DISTRICTS AS EQUALIZED BY DEPARTMENT OF TAXATION, Tax including State Homestead, State Tax on Non-Homestead, SPECIAL TAXES, TOTAL TAXES, PAID, WHEN PAID, Number of Receipt, March Settlement 1960, June Settlement 1960, Penalty, November Settlement 1960, Penalty, Collections to First Monday in January 1961, Penalty, Delinquent on First Monday in January 1961, Total Delinquent Tax and Penalty, REMARKS. Includes handwritten entries for 1959 tax payments and settlements.

Millers Point, Woodland, Des Moines Beach, Horseshoe Beach, Hurry Beach, El Sueno here

Assessment Roll and Tax List of Real Property in the Town of Powers

\* Indicate Type of Property: R-Residential, C-Commercial, I-Industrial, U-Utility, F-Farm, L-Lakeshore, T-Timber, M-Mineral

Form 300 MILLER-DAVIS CO. MINNEAPOLIS

Table with columns: IN WHOSE NAME ASSESSED, TO WHOM TRANSFERRED, DESCRIPTION OF PROPERTY, TRUE AND FULL VALUATIONS, ASSESSED VALUATIONS, FINAL EQUALIZED VALUE.

Cass County, Minnesota, for Taxes for the Year 1959.

Table with columns: SOLD FOR TAXES, VALUATIONS BY SCHOOL DISTRICTS AS EQUALIZED BY DEPARTMENT OF TAXATION, Tax Including State Homestead, State Tax on Non-Homestead, SPECIAL TAXES, TOTAL TAXES, PAID, WHEN PAID, Number of Receipt, March Settlement 1960, June Settlement 1960, November Settlement 1960, Collections to First Monday in January 1961, Delinquent on First Monday in January 1961, Total Delinquent Tax and Penalty, REMARKS.

Millers Point, Woodland, Des Moines Beach, Horseshoe Beach, Larry Beach, El Sueño mere

Assessment Roll and Tax List of Real Property in the Town of Powers

Indicate Type of Property: R-Residential, C-Commercial, I-Industrial, U-Utility, F-Farm, L-Lakeshore, T-Timber, M-Mineral

Table with columns: IN WHOSE NAME ASSESSED, TO WHOM TRANSFERRED, DESCRIPTION OF PROPERTY, TRUE AND FULL VALUATIONS, ASSESSED VALUATIONS, FINAL EQUALIZED VALUE.

Cass County, Minnesota, for Taxes for the Year 1959.

Table with columns: SOLD FOR TAXES, VALUATIONS BY SCHOOL DISTRICTS AS EQUALIZED BY DEPARTMENT OF TAXATION, Tax including State Homestead, State Tax on Non-Homestead, SPECIAL TAXES, TOTAL TAXES, PAID, WHEN PAID, Number of Receipt, March Settlement 1960, June Settlement 1960, Penalty, November Settlement 1960, Collections to First Monday in January 1961, Delinquent on First Monday in January 1961, Total Delinquent Tax and Penalty, REMARKS.

Millers Point, Woodland, Des Moines Beach, Horseshoe Beach, Murray Beach, El Sueno

Assessment Roll and Tax List of Real Property in the Town of Brown

\* Indicate Type of Property: R-Residential, C-Commercial, I-Industrial, U-Utility, F-Farm, L-Lakeshore, T-Timber, M-Mineral

Table with columns: IN WHOSE NAME ASSESSED, TO WHOM TRANSFERRED, DESCRIPTION OF PROPERTY, TRUE AND FULL VALUATIONS, ASSESSED VALUATIONS, FINAL EQUALIZED VALUE. Includes handwritten entries for Gladys Jysedal, Edwin Falk, Margaret A. Luebben, etc.

with next page

Cass County, Minnesota, for Taxes for the Year 1959.

Table with columns: SOLD FOR TAXES, VALUATIONS BY SCHOOL DISTRICTS AS EQUALIZED BY DEPARTMENT OF TAXATION, Tax including State Homestead, State Tax on Non-Homestead, SPECIAL TAXES, TOTAL TAXES, PAID, WHEN PAID, Number of Receipt, March Settlement 1960, June Settlement 1960, Penalty, November Settlement 1960, Collections to First Monday in January 1961, Delinquent on First Monday in January 1961, Total Delinquent Tax and Penalty, REMARKS. Includes handwritten entries for Gladys Jysedal, Edwin Falk, etc.

Millers Point, Woodland, Des Moines Beach, Horseshoe Beach, Huron Beach, El Sueno



Assessment Roll and Tax List of Real Property in the Town of Bowers

Cass County, Minnesota, for Taxes for the Year 1959.

Form 501 (11-5-59) INDIANAPOLIS, ILL. Indicate Type of Property: R-Residential, C-Commercial, I-Industrial, U-Utility, F-Farm, L-Lakeshore, T-Timber, M-Mineral

Table with columns: IN WHOSE NAME ASSESSED, TO WHOM TRANSFERRED, DESCRIPTION OF PROPERTY, TRUE AND FULL VALUATIONS, ASSESSED VALUATIONS, FINAL EQUALIZED VALUE.

Table with columns: SOLD FOR TAXES, VALUATIONS BY SCHOOL DISTRICTS AS EQUALIZED BY DEPARTMENT OF TAXATION, Tax including State Homestead, SPECIAL TAXES, TOTAL TAXES, PAID, WHEN PAID, March Settlement 1960, June Settlement 1960, November Settlement 1960, Collections to First Monday in January 1961, Delinquent on First Monday in January 1961, Total Delinquent Tax and Penalty, REMARKS.

Millers Point, Woodland, Des Moines Beach, Horseshoe Beach, Huron Beach, El Surco



Assessment Roll and Tax List of Real Property in the Town of Osborne

\* Indicate Type of Property: R-Residential, C-Commercial, I-Industrial, U-Utility, F-Farm, L-Lakeshore, T-Timber, M-Mineral

Form 50D

IN WHOSE NAME ASSESSED	TO WHOM TRANSFERRED	DESCRIPTION OF PROPERTY				TRUE AND FULL VALUATIONS			ASSESSED VALUATIONS						FINAL EQUALIZED VALUE	
		SUBDIVISION	Sec. of Lot	Town or Block	Reg. Acres of Land	LAND Structures of and Improvements	BUILDINGS and Other Structures	MACHINERY Permanently Attached to Real Estate	RURAL		ALL OTHER		MACHINERY Permanently Attached to Real Estate	TOTAL ASSESSED VALUE		Total Assessed Value as Equalized by the Board of Review
									Homestead Up to \$4,000 20%	Over \$4,000 and Non-Homestead 33 1/3%	Timber Land Class 3e 20%	Homestead Up to \$4,000 25%				
					Acres	Dollars	Dollars	Dollars	Dollars	Dollars	Dollars	Dollars	Dollars	Dollars	Dollars	

Wm. E. & Ruth N. De Jung

7.400' of S 829' of W 343' of NW 1/4 of SE 1/4

No. 114

Cass County, Minnesota, for Taxes for the Year 1959.

SOLD FOR TAXES	VALUATIONS BY SCHOOL DISTRICTS AS EQUALIZED BY DEPARTMENT OF TAXATION						Tax including State Homestead	State Tax on Non-Homestead	SPECIAL TAXES	TOTAL TAXES	PAID	WHEN PAID	Number of Receipt	March Settlement 1960	June Settlement 1960	Penalty	November Settlement 1960	Penalty	Collections to First Monday in January 1961	Penalty	Delinquent on First Monday in January 1961	Total Delinquent Tax and Penalty	REMARKS
	District No.	District No.	District No.	District No.	District No.	District No.																	
	Rate	Rate	Rate	Rate	Rate	Rate																	

250 6940 156 7096

PAID IN FULL MAY 1 1960 12799

7096

9163

250 6940 156 7096

7096

Millers Point  
Woodland  
Des Moines Beach  
Horsehoe Beach  
Roy Beach  
El Sueno  
Amere

Assessment Roll and Tax List of Real Property in the Town of Powers

Indicate Type of Property: R-Residential, C-Commercial, I-Industrial, U-Utility, F-Farm, L-Lakeshore, T-Timber, M-Mineral

Form 300 (1959-60)

Table with columns: IN WHOSE NAME ASSESSED, TO WHOM TRANSFERRED, DESCRIPTION OF PROPERTY, TRUE AND FULL VALUATIONS, ASSESSED VALUATIONS, FINAL EQUALIZED VALUE. Includes handwritten entries for property owners like 'Loren Arthur & Mary Barbara' and 'Richard J. Smuda'.

Cass County, Minnesota, for Taxes for the Year 1959.

Table with columns: SOLD FOR TAXES, VALUATIONS BY SCHOOL DISTRICTS AS EQUALIZED BY DEPARTMENT OF TAXATION, TAX INCLUDING STATE HOMESTEAD, SPECIAL TAXES, TOTAL TAXES, PAID, WHEN PAID, Number of Receipt, March Settlement 1960, June Settlement 1960, November Settlement 1960, Collections to First Monday in January 1961, Delinquent on First Monday in January 1961, Total Delinquent Tax and Penalty, REMARKS. Includes handwritten entries for tax payments and dates.

Vertical text on the right edge of the page: Millers Point, Woodland, Dos Molnes Beach, Horseshoe Beach, El Sueño.



Assessment Roll and Tax List of Real Property in the Town of Powers

Indicate Type of Property: R-Residential, C-Commercial, I-Industrial, U-Utility, F-Farm, L-Lakeshore, T-Timber, M-Mineral

Form SCD MILLER-DAVIS CO., MINNEAPOLIS

Table with columns: IN WHOSE NAME ASSESSED, TO WHOM TRANSFERRED, DESCRIPTION OF PROPERTY, TRUE AND FULL VALUATIONS, ASSESSED VALUATIONS, and FINAL EQUALIZED VALUE. Includes handwritten entries for various property owners like Edmer & Ada Doty, Frances W. & Gladys L. Ben Espe, etc.

444.23

Cass County, Minnesota, for Taxes for the Year 1959.

Table with columns: SOLD FOR TAXES, VALUATIONS BY SCHOOL DISTRICTS AS EQUALIZED BY DEPARTMENT OF TAXATION, Tax including State Homestead, State Tax on Non-Homestead, SPECIAL TAXES, TOTAL TAXES, PAID, WHEN PAID, Number of Receipts, March Settlement 1960, June Settlement 1960, November Settlement 1960, Penalty, Collections to First Monday in January 1961, Delinquent on First Monday in January 1961, Total Delinquent Tax and Penalty, REMARKS. Includes handwritten entries for various property owners and tax amounts.

Handwritten calculations and totals at the bottom of the tax table, including values like 2190, 2739, 3400, 102164, 760+2, 26122, 1546, 103010, 51565, 34799, 14132, 32.74 abated.

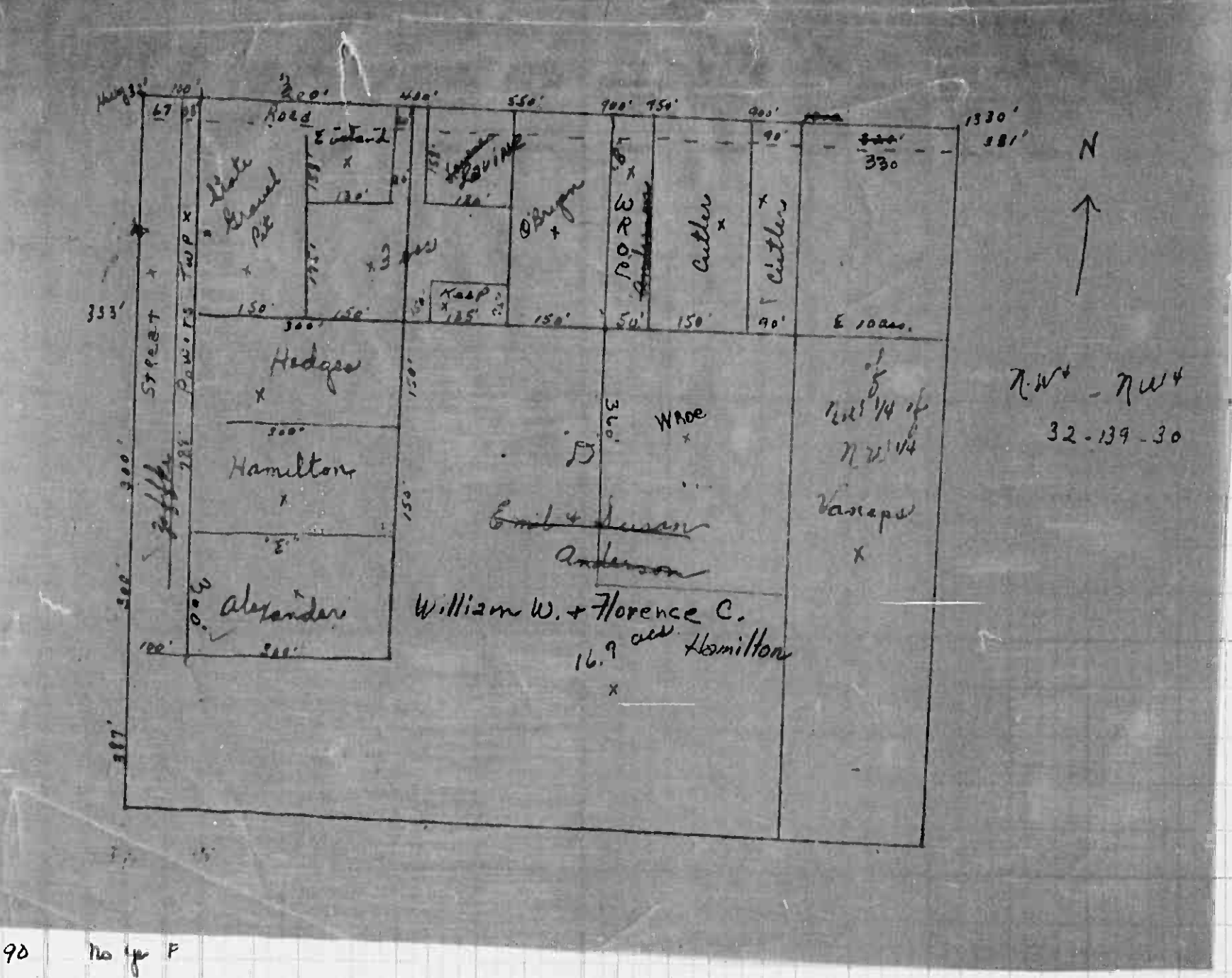
Vertical text on the right edge of the page: Millers Point, Woodland, Des Moines Beach, Horseshoe Beach, Lumber of Beach, El Suro more.

Form SCD MILLER-DAVIS CO., MINNEAPOLIS

DESCRIPTION OF PROPERTY

IN WHOSE NAME ASSESSED	TO WHOM TRANSFERRED	SUBDIVISION	Sec. of Lot	Town of Block	Rdg.	Acres
Rose E & Dorothy E. Baker		1 N 24 1/2 N E 1/4 27 27 1/2 N W 1/4 N E 1/4	32	139	30	
Donna C. Weiss		5 Part of NW 1/4 of NW 1/4 All lands lying E of Chas. H. & Dorothy O. Cutler & extended to the line of NE 1/4 of NW 1/4				
Backus Evergreen Cemetery Assn. State of Minnesota		8 E. 150' of W. 550' of NW 1/4 of NW 1/4 less 2 1/2 ac.				
Chas. H. & Dorothy O. Cutler		9 NW 1/4 of NW 1/4				
Arthur & Vera Ann O. Cutler		10 E. 150' of W. 700' of NW 1/4 NW 1/4 of NW 1/4				
Frances W. & Gladys S. Van Eps		11 10 acres of NW 1/4 of NW 1/4				10
Florence C. Hamilton		12 E. 300' of W. 400' of NW 1/4 of NW 1/4 of NW 1/4				
Horace & Edith M. Hedges		13 E. 300' of W. 400' of NW 1/4 of NW 1/4 of NW 1/4				
Moses & Lila Zoffke (a)		14 W. 100' of NW 1/4 of NW 1/4 less N. 783' of E. 300'				
Donna C. Weiss (a)		15 E. 50' of W. 750' of NW 1/4 NW 1/4 of NW 1/4				
Chas. H. & Dorothy O. Cutler (a)		16 NW 1/4 of NW 1/4 less E. 10 acres less E. 600' of W. 933' of W. 400'				16 90
William W. & Florence C. Hamilton		17 E. 300' of W. 933' of E. 300' of W. 400' of NW 1/4 of NW 1/4				2 05
Bates & Ethel Alexander		18 75' x 135' Part of NW 1/4 of NW 1/4				25
Clinton J. & Florence F. Kepp		19 E. 130' of W. 550' of NW 1/4				50
Ernest B. & Marie Lammie		20 NW 1/4 of NW 1/4				

cont on next page



Final

ASSESSED BY	FINAL EQUALIZED VALUE
By	Dollars

SOLD FOR TAXES	VALUATIONS BY SCHOOL DISTRICTS AS EQUALIZED BY DEPARTMENT OF TAXATION						Tax including State Homestead	State Tax on Non-Homestead	SPECIAL TAXES	TOTAL TAXES	PAID	WHEN PAID	Number of Receipt	March Settlement 1960	June Settlement 1960	November Settlement 1960	Penalty	Collections to First Monday in January 1961	Penalty	Delinquent on First Monday in January 1961	Total Delinquent Tax and Penalty	REMARKS	
	District No.	District No.	District No.	District No.	District No.	District No.																	
	Rate	Rate	Rate	Rate	Rate	Rate																	
1																							
2			H 6				166		166		PAID IN FULL	MAY 31 1960	12807		166							9158	
3																							
4																							
5																							
6																							
7																							
8			H 35				972		972													972	
9							8524	190	8714														
10			H 15				416		416		PAID IN FULL	MAY 12 1960	6797		416								
11			H 20				506		506		PAID IN FULL	MAY 12 1960	6820		506							9200	
12									1416		PAID IN FULL	MAR 28 1960	4558		1416							9154	
13									2360	52					2412							25329	
14									306	06					312							9507	
15									278	06					284							9157	
16									278	06					284								
17									1136	28					1264							9158	
18									1264	32					1296								
19			H 51						1288		PAID IN FULL	MAY 31 1960	12783		1288							9157	
20									278	06					284								
			H 71				14944		4194	356				19514		7808		156				11550	
							166		540	706													

Miller Point  
Woodland  
Des Moines Beach  
Horsehoe Beach  
Luroy Beach  
El Sueno Mare

Form SCD MILLER DAVIS CO., MINNEAPOLIS

IN WHOSE NAME ASSESSED	TO WHOM TRANSFERRED	DESCRIPTION OF PROPERTY	No. School District	Ind. Homestead Tax No.	Ind. State Tax No.	Ind. City Tax No.	TRUE AND FULL VALUATIONS				ASSESSED VALUATIONS							FINAL EQUALIZED VALUE	REMARKS	
							LAND Exclusive of Structures and Improvements	BUILDINGS and Other Structures	MACHINERY Permanently Attached to Real Estate	TOTAL True and Full Value	RURAL		Timber Land Class Aa	ALL OTHER		MACHINERY Permanently Attached to Real Estate	TOTAL ASSESSED VALUE			Total Assessed Value as Equalized by the Board of Review
											Homestead Up to \$4,000	Over \$4,000 and Non-Homestead		Homestead Up to \$4,000	Over \$4,000 and Non-Homestead					
Rose E. + Dorothy E. Baker		1 2.25' of NW 1/4 of NW 1/4 32 139 30	114																	
		2 27.27' of NW 1/4 of NW 1/4 150		Yes	No	C														
Anna C. Wroe		3 2.00' of W. 550' of N. 333' of NW 1/4 of NW 1/4 less road																		
Baker Evergreen Cemetery Assn. State of Minnesota		4 5.00' of NW 1/4 of NW 1/4 (1.15 ac. Grand Pk.)																	Exempt	
Olaf + Nellie Foss		8 6.00' of W. 550' of N. 333' of NW 1/4 of NW 1/4 less road		Yes	No	A														
Charles H. + Dorothy O. Cutler		9 6.150' of W. 900' of N. 333' of NW 1/4 of NW 1/4		No	No	C														
Arthur + Eva Ann O. Cutler		10 6.150' of W. 700' of N. 333' of NW 1/4 of NW 1/4		Yes	No	R														
Frances W. + Gladys S. Van Espel		11 1/2 acres of NW 1/4 of NW 1/4		Yes	Yes	F														
Florence C. Hamilton		12 6.300' of NW 1/4 of NW 1/4		Yes	No	C														
Horace + Edith M. Hedges		13 6.300' of W. 400' of N. 150' of NW 1/4 of NW 1/4		No	No	R														
Moses + Lila Zaffke (a)		14 1/2 100' of N. 933' of NW 1/4 of NW 1/4 less N. 783' of E. 333'		No	No	H														
Anna C. Wroe (a)		15 6.50' of W. 750' of N. 333' of NW 1/4 of NW 1/4		No	No	C														
Chas H. + Dorothy O. Cutler (c)		16 700' of NW 1/4 less E. 100' + less N. 333'		No	No	C														
William W. + Florence C. Hamilton		17 70 1000' + less E. 600' of N. 333' of W. 400' of NW 1/4 of NW 1/4		No	Yes	F														
Pat + Ethel Alexander		18 2 300' of N. 933' of E. 300' of W. 400' of NW 1/4 of NW 1/4		No	No	T														
Clinton J. + Florence J. Hayes		19 75' x 135' Part of NW 1/4 of NW 1/4		Yes	Yes	R														
Emack B. + Marie Lennie		20 E. 130' of W. 550' of N. 150' of NW 1/4 of NW 1/4		No	No	R														
		with one roof																		

SOLD FOR TAXES	VALUATIONS BY SCHOOL DISTRICTS AS EQUALIZED BY DEPARTMENT OF TAXATION						Tax Including State Homestead	State Tax on Non-Homestead	SPECIAL TAXES	TOTAL TAXES	PAID	WHEN PAID	Number of Receipts	March Settlement 1960	June Settlement 1960	Penalty 1960	November Settlement 1960	Penalty 1960	Collections to First Monday in January 1961	Penalty 1961	Delinquent on First Monday in January 1961	Total Delinquent Tax and Penalty	REMARKS	
	District No.	District No.	District No.	District No.	District No.	District No.																		
	Rate	Rate	Rate	Rate	Rate	Rate																		
	District No. 114	District No. 70	District No. 114	District No. 70	District No. 114	District No. 70																		
	Rate 1.5 Mills	Rate 1.5 Mills	Rate 1.5 Mills	Rate 1.5 Mills	Rate 1.5 Mills	Rate 1.5 Mills																		
	Dollars	Dollars	Dollars	Dollars	Dollars	Dollars	\$ cts	\$ cts	\$ cts	\$ cts	Month Day Year		\$ cts	\$ cts	\$ cts	\$ cts	\$ cts	\$ cts	\$ cts	\$ cts	\$ cts	\$ cts	\$ cts	
				# 6			166		166		PAID IN FULL	MAY 31 1960	12807		166							9158		
				# 35			972		972													972		
							8524	190	8714													8714 Pd		
				# 15			416		416		PAID IN FULL	MAY 12 1960	6797		416							6797		
				# 20			506		506		PAID IN FULL	MAY 12 1960	6820		506							6820		
				# 51			1416		1416		PAID IN FULL	MAR 28 1960	4458		1416							4458		
							2360	52	2412		PAID IN FULL	MAY 31 1960	12773		2412							12773		
							306	06	312		HALF PAID	MAY 31 1960	17343		136		156					17343		
							228	06	234		PAID IN FULL	MAY 16 1960	6759		234							6759		
							278	06	284													284 Pd		
							1136	28	1164		PAID IN FULL	MAR 28 1960	4458		1164							4458		
							1264	32	1296													1296		
							1288		1288		PAID IN FULL	MAY 31 1960	12783		1288							12783		
							278	06	284													284		
							1494		1494													1494		
							4194	32.6	4194													4194		
							19188		19188													19188		

Millers Point  
Woodland  
Des Moines Beach  
Horseshoe Beach  
Curry Beach  
El Sueno  
more







Assessment Roll and Tax List of Real Property in the

Town of Bowen

Indicate Type of Property: R-Residential, C-Commercial, I-Industrial, U-Utility, F-Farm, L-Lakeshore, T-Timber, M-Mineral

Form 130 MILLER-DAVIS CO. MINNEAPOLIS

Table with columns: IN WHOSE NAME ASSESSED, TO WHOM TRANSFERRED, DESCRIPTION OF PROPERTY, TRUE AND FULL VALUATIONS, ASSESSED VALUATIONS, and FINAL EQUALIZED VALUE. Includes entries for Eugene Walther & Donna C. Whose, Wm. & Marvel De Jueg, Rodney A. & Grace M. Warner, etc.

Cass County, Minnesota, for Taxes for the Year 1959.

Table with columns: SOLD FOR TAXES, VALUATIONS BY SCHOOL DISTRICTS AS EQUALIZED BY DEPARTMENT OF TAXATION, Tax including State Homestead, State Tax on Non-Homestead, SPECIAL TAXES, TOTAL TAXES, PAID, WHEN PAID, Number of Receipt, March Settlement 1960, June Settlement 1960, Penalty, November Settlement 1960, Penalty, Collections to First Monday in January 1961, Penalty, Delinquent on First Monday in January 1961, Total Delinquent Tax and Penalty, REMARKS. Includes entries for 1 PAID IN FULL MAR 15 1960, 3 PAID IN FULL MAY 31 1960, etc.

Vertical text on the right edge of the page: Millers Point, Woodland, Des Moines Beach, Horseshoe Beach, Luroy Beach, El Sueno

Assessment Roll and Tax List of Real Property in the Town of Bowen

Indicate Type of Property: R-Residential, C-Commercial, I-Industrial, U-Utility, F-Farm, L-Lakeshore, T-Timber, M-Mineral

Form SCD MILLER-DAVIS CO., MINNEAPOLIS

Table with columns: IN WHOSE NAME ASSESSED, TO WHOM TRANSFERRED, DESCRIPTION OF PROPERTY, TRUE AND FULL VALUATIONS, ASSESSED VALUATIONS, FINAL EQUALIZED VALUE. Includes entries for Lyle & Jessie Coffland, Robert W. & Clara E. Fxende, Alfred J. & Carroll A. Barker, N. Starnold & Ruth A. West, etc.

421 25

Cass County, Minnesota, for Taxes for the Year 1959.

Table with columns: SOLD FOR TAXES, VALIDATIONS BY SCHOOL DISTRICTS AS EQUALIZED BY DEPARTMENT OF TAXATION, Tax including State Homestead, SPECIAL TAXES, TOTAL TAXES, PAID, WHEN PAID, Number of Receipt, March Settlement 1960, June Settlement 1960, Penalty, November Settlement 1960, Collections to First Monday in January 1961, Delinquent on First Monday in January 1961, Total Delinquent Tax and Penalty, REMARKS. Includes entries for 1, 2, 3, 4, 5, 6, 7, 8, 9, 10, 11, 12, 13, 14, 15, 16, 17, 18, 19, 20.

Miller's Point, Woodland, Des Moines Beach, Horseshoe Beach, El Suro

Assessment Roll and Tax List of Real Property in the Town of Powers

Indicate Type of Property: R-Residential, C-Commercial, I-Industrial, U-Utility, F-Farm, L-Lakeshore, T-Timber, M-Mineral

Form SCID 1958-1959

Table with columns: IN WHOSE NAME ASSESSED, TO WHOM TRANSFERRED, SUBDIVISION, TRUE AND FULL VALUATIONS, ASSESSED VALUATIONS, FINAL EQUALIZED VALUE. Includes entries for Helen Snodgrass, Wm. H. + Emma V. Godner, State of Minnesota, Life + Jessie Coffland, Aida E. Miller, James + Mary Field, and Virgil J. + Grace Alexander.

24700

Cass County, Minnesota, for Taxes for the Year 1959.

Table with columns: SOLD FOR TAXES, VALIDATIONS BY SCHOOL DISTRICTS AS EQUALIZED BY DEPARTMENT OF TAXATION, Tax including State Homestead, State Tax on Non-Homestead, SPECIAL TAXES, TOTAL TAXES, PAID, WHEN PAID, Number of Receipt, March Settlement 1960, June Settlement 1960, November Settlement 1960, Collections to First Monday in January 1961, Delinquent on First Monday in January 1961, Total Delinquent Tax and Penalty, REMARKS. Includes entries for 1st Half Paid, 2nd Half Paid, PAID IN FULL, and various tax amounts.

Vertical text on the right edge of the page: Millers Point, Woodland, Des Moines Beach, Horseshoe Beach, Troy Beach, El Sueno









Assessment Roll and Tax List of Real Property in the Town of Bowers

Indicate Type of Property: R-Residential, C-Commercial, I-Industrial, U-Utility, F-Farm, L-Lakeshore, T-Timber, M-Mineral

Cass County, Minnesota, for Taxes for the Year 1959.

Millers Point Woodland Des Moines Beach

Table with columns: IN WHOSE NAME ASSESSED, TO WHOM TRANSFERRED, SUBDIVISION, Sec. of Lot, Town or Block, No. of Acres, TRUE AND FULL VALUATIONS (LAND, BUILDINGS, MACHINERY, TOTAL), ASSESSED VALUATIONS (RURAL, ALL OTHER, MACHINERY, TOTAL ASSESSED), Total Assessed Value as Equalized by the Board of Review, FINAL EQUALIZED VALUE.

Table with columns: SOLD FOR TAXES, VALUATIONS BY SCHOOL DISTRICTS AS EQUALIZED BY DEPARTMENT OF TAXATION, Tax including State Homestead, State Tax on Non-Homestead, SPECIAL TAXES, TOTAL TAXES, PAID, WHEN PAID, Number of Receipt, March Settlement 1960, June Settlement 1960, Penalty, November Settlement 1960, Collections to First Monday in January 1961, Delinquent on First Monday in January 1961, Total Delinquent Tax and Penalty, REMARKS.







Assessment Roll and Tax List of Real Property in the Town of Powers

Indicate Type of Property: R-Residential, C-Commercial, I-Industrial, U-Utility, F-Farm, L-Lakeshore, T-Timber, M-Mineral

Form 50 MILLER-DAVIS CO., MINNEAPOLIS

Millers Point, Woodland, Des Moines Beach, Horseshoe Beach

Table with columns: IN WHOSE NAME ASSESSED, TO WHOM TRANSFERRED, SUBDIVISION, TRUE AND FULL VALUATIONS (LAND, BUILDINGS, MACHINERY, TOTAL), ASSESSED VALUATIONS (RURAL, ALL OTHER, MACHINERY, TOTAL ASSESSED), FINAL EQUALIZED VALUE.

Cass County, Minnesota, for Taxes for the Year 1959.

Table with columns: SOLD FOR TAXES, VALUATIONS BY SCHOOL DISTRICTS AS EQUALIZED BY DEPARTMENT OF TAXATION, Tax including State Homestead, State Tax on Non-Homestead, SPECIAL TAXES, TOTAL TAXES, PAID, WHEN PAID, Number of Receipt, March Settlement, June Settlement, November Settlement, Collections to First Monday in January 1961, Delinquent on First Monday in January 1961, Total Delinquent Tax and Penalty, REMARKS.

Edo Shores, Edo Hill, Luroy Beach, El Sueno, Emerg Bay

















Assessment Roll and Tax List of Real Property in the Town of Powers

\* Indicate Type of Property: R-Residential, C-Commercial, I-Industrial, U-Utility, F-Farm, L-Lakeshore, T-Timber, M-Mineral

Form 50 MILLER-DAVIS CO., MINNEAPOLIS

DESCRIPTION OF PROPERTY

TRUE AND FULL VALUATIONS

ASSESSED VALUATIONS

VALUATIONS BY SCHOOL DISTRICTS AS EQUALIZED BY DEPARTMENT OF TAXATION

Main table with columns: IN WHOSE NAME ASSESSED, TO WHOM TRANSFERRED, SUBDIVISION, Sec. or Lot, Town or Block, No. of Acres, No. School District, Indicate Homestead, Indicate Agricultural, Indicate Type of Property, LAND, BUILDINGS, MACHINERY, TOTAL True and Full Value, RURAL (Homestead, Over \$4,000), ALL OTHER (Homestead, Over \$4,000), MACHINERY, TOTAL ASSESSED VALUE, Total Assessed Value as Equalized, FINAL EQUALIZED VALUE, SOLD FOR TAXES, District No., Rate, Tax Including State Homestead, State Tax on Non-Homestead, SPECIAL TAXES, TOTAL TAXES, PAID, WHEN PAID, Number of Receipts, March Settlement, June Settlement, Penalty, November Settlement, Penalty, Collections to First Monday in January, Delinquent on First Monday in January, Total Delinquent Tax and Penalty, REMARKS.

Cass County, Minnesota, for Taxes for the Year 1959.

Haaland's Lakeshore, Non Rainy Lake, Aldo Shores, Sandown Heights, Gillette's Sub Division, Idemere Beach

Haaland's Lakeshore, Aldo Shores, Sandown Heights, Gillette's Sub Division, Idemere Beach, Vincent's Point Shores

Handwritten summary at bottom right: 11 259, 133, 382, 12406, 78, 12486, 6939, 5547







Assessment Roll and Tax List of Real Property in the Town of Powers

\* Indicate Type of Property: R-Residential, C-Commercial, I-Industrial, U-Utility, F-Farm, L-Lakeshore, T-Timber, M-Mineral

Table with columns: IN WHOSE NAME ASSESSED, TO WHOM TRANSFERRED, SUBDIVISION, DESCRIPTION OF PROPERTY, TRUE AND FULL VALUATIONS, ASSESSED VALUATIONS, FINAL EQUALIZED VALUE. Includes handwritten entries for Eugene Walter + Donna C. Wroe and Robert B. & Lois E. Christson.

Cass County, Minnesota, for Taxes for the Year 1959.

Table with columns: SOLD FOR TAXES, VALUATIONS BY SCHOOL DISTRICTS AS EQUALIZED BY DEPARTMENT OF TAXATION, TAX INCLUDING STATE HOMESTEAD, SPECIAL TAXES, TOTAL TAXES, PAID, WHEN PAID, Number of Receipt, March Settlement 1960, June Settlement 1960, November Settlement 1960, Penalty, Collections to First Monday in January 1961, Delinquent on First Monday in January 1961, Total Delinquent Tax and Penalty, REMARKS.





