

INDEX TO SECTIONS

SECTION PAGE

Sec. 1	
" 2	
" 3	
" 4	
" 5	
" 6	
" 7	
" 8	
" 9	
" 10	
" 11	
" 12	
" 13	
" 14	
" 15	
" 16	
" 17	
" 18	
" 19	
" 20	
" 21	
" 22	
" 23	
" 24	
" 25	
" 26	
" 27	
" 28	
" 29	
" 30	
" 31	
" 32	
" 33	
" 34	
" 35	
" 36	

For Convenience of Auditor in Showing Boundaries of School Districts

Township No. 139 Range No. 30 Mer. P. M.

Sec. 1-2-3-4-5-6-10-11
Remains unorg.

Ord. # 30 Nov # 114
Sept. 1957

Returns Showing Grain Received in or Handled by Elevators, Warehouses and Mills in the _____ of _____ in the _____ County of _____ for the Year Ending May 1, 1958.

NAMES OF OWNERS	ADDRESS	Bushels of Wheat	Bushels of Soy Beans	Bushels of Flax	Total No. of Bushels of Wheat, Soy Beans and Flax	★ Tax of 1/4 Mill per Bushel		Bushels of Corn	Bushels of Barley	Bushels of Rye	Bushels of Oats	Bushels of Buckwheat	Bushels of all Other Grains	Total No. Bushels Corn, Barley, Rye, Oats, Buckwheat and all Other Grains	★ Tax of 1/4 Mill Per Bushel		★ Total Tax		REMARKS
						Dollars	Cts.								Dollars	Cts.	Dollars	Cts.	

Real Estate
Miller's Point
Woodland
DeMolines Beach
Escoe Beach
Roy Bay
Savage
Wildmore Beach

Note ★ Assessors will not fill these Columns

SUMMARY OF TAX COLLECTION

Original Levy	- - - - -	\$ 16,732.50	
Additions	- - - - -	\$ 12.84	
			\$ 16,745.34
Abatements	- - - - -	\$ 263.06	
			\$ 16,482.28

COLLECTIONS

March Settlement	- - - - -	\$ 2,607.37	
June Settlement	- - - - -	\$ 898.08	
November Settlement	- - - - -	\$ 3047.81	
January Settlement	- - - - -	\$ 15.13	\$ 14,651.39
			\$
Over Collected	- - - - -	\$ 41.08	
Under Collected	- - - - -	\$.02	
Delinquent	- - - - -	\$ 1,871.95	\$ 1,830.89
Total	- - - - -		\$ 16,482.28

TABULAR SCHEDULE OF VALUATIONS,

LEVIED IN THE Town OF Towers

School District No.	VALUATION BY SCHOOL DISTRICTS				RATE OF STATE TAXES	RATE OF COUNTY TAXES							RATE OF TOWN TAXES										RATE OF
	Agricultural Lands	Non-Agricultural Lands	Personal Property	Total Value of all Property except Money and Credits		Rev.	J.R. & B.	Welfare	Bonds and Int.	R.R. & P.R.	Total Rate of County Tax	Rev.	R. & B.	Drag Tax	State Loan	Local	Special	State Loan	Deficiency	Tuition	Transportation	C.O. PERA	
114	21,868	25,163	79,385	56,634	H. 5.90	29.54	15	51.68		5.345	109.17	5.1	11.6	1	17.7	1	25	40	1.45	20.5	2.26		
un	3631	6797	74,190	12,335																			
				68,969	N.H. 6.52				Co. Nurse 2. R & B Bldg. 2 Agric. Assn. 5														
				12.42																			
Assessed Value	Rural	All Other	Personal Property	Total																			
Homestead	19,643	872		20,515																			
Non-Homestead	33,364	3,580	11,510	48,454																			
Total	53,007	4,452	11,510	68,969																			

RATES AND TAXES

COUNTY OF CASS, STATE OF MINNESOTA

SCHOOL TAXES			LOCAL 1 MILL AND SPECIAL SCHOOL TAXES BY DISTRICTS										ALL OTHER TAXES		
Total Rate of Sch'l Tax	Total Rate of all Taxes		Local 1 Mill	Special	State Loan	Def. Transp. C.O. PERA	Total School Taxes	FUNDS	Rate	Amounts					
90.21	222.98		2572	64298		102876	3729	52724	5812	232011	State - Non-Homestead,		31614		
115.21	247.98		3091	154575		123660	4483	63376	6987	356172	State - Homestead,		46692		
97.55	230.32		363	7262		22875	526	3631	762	35419	County Revenue,		203734		
117.55	250.32		870	34816		54835	1262	8704	1828	102315	County Road and Bridge,		103453		
			6896	260951		304246	10000	128435	15389	725917	County Welfare,		556441		
						County: R & B Bldg. 13794 Agric. Assn. 3448						Home and Interest - PERA		23794	
												Co. Nurse		13794	
												R & B Fed. Prop.		34484	
												Town Revenue,		35184	
												Town Road and Bridge,		80004	
												Town Drag,		6899	
												Town State Loan		122085	
												School Local 1 Mill,		6896	
												School Special,		260951	
												School State Loan,		304246	
												Deficiency			
												Tuition		10000	
												Transportation		128435	
												C.O. PERA		15389	
														725917	
														1673250	

Total Taxes Real Estate 13,894.98
Pers. Prop. 2837.52
Total 16,732.50

Total Number of Acres 12,227.257
State of Minnesota, }
COUNTY OF CASS }
I, L. C. Peterson, Auditor of said County and State aforesaid, do hereby certify that the foregoing is a true and correct Schedule, showing the valuation of all the taxable property, in the Town of Towers, in said County, the several rates of Taxation and Totals of the several Tax Funds levied thereon for the year A. D. 1958.

Witness my hand and official seal, this 9th day of January, A. D. 1959



L. C. Peterson, County Auditor
By Helen Thelen, Deputy

Real Estate

Minneapolis Beach, Washburn Beach, Lufkin Bay, Roscoe, Wildmore Beach

Assessment Roll and Tax List of Real Property in the Town of Powers,
 * Indicate Type of Property: R-Residential, C-Commercial, I-Industrial, U-Utility, F-Farm, L-Lakeshore, T-Timber, M-Mineral

Cass County, Minnesota, for Taxes for the Year 1958.

IN WHOSE NAME ASSESSED	TO WHOM TRANSFERRED	DESCRIPTION OF PROPERTY		No. School District	Indicate Homestead Tax or No	Indicate Apts. or Tenement or No	Indicate Type of Property	TRUE AND FULL VALUATIONS					ASSESSED VALUATIONS							FINAL EQUALIZED VALUE									
		SUBDIVISION	Sec. of Lot					Town or Block	Rng.	Number of Acres of Land	Machinery Permanently Attached to Real Estate	TOTAL True and Full Value	RURAL		ALL OTHER		Machinery Permanently Attached to Real Estate	TOTAL ASSESSED VALUE	Total Assessed Value as Equalized by the Board of Review										
													LAND Exclusive of Structures and Improvements	BUILDINGS and Other Structures	Homestead Up to \$4,000	Over \$4,000 and Non-Homestead					Homestead Up to \$4,000	Over \$4,000 and Non-Homestead							
															Dollars	Dollars					Dollars	Dollars	Dollars	Dollars					
George J. Owen	State of Minnesota	N W 1/4 of NW 1/4					1.139	30	3490	Un 70	T		111		37	111	37	111											
State of Minnesota		N W 1/4 of NW 1/4																											
State of Minnesota		S W 1/4 of NW 1/4																											
State of Minnesota		S E 1/4 of NW 1/4																											
State of Minnesota		NE 1/4 of NW 1/4																											
State of Minnesota		NW 1/4 of NW 1/4																											
State of Minnesota		SW 1/4 of NW 1/4																											
State of Minnesota		SE 1/4 of NW 1/4																											
State of Minnesota		NE 1/4 of SW 1/4																											
State of Minnesota		NW 1/4 of SW 1/4																											
State of Minnesota		SW 1/4 of SW 1/4																											
State of Minnesota		SE 1/4 of SW 1/4																											
George J. Owen	State of Minnesota	NE 1/4 of SE 1/4					40			72	72	T	120		120	40	120	40	120										
State of Minnesota		NW 1/4 of SE 1/4																											
State of Minnesota		SW 1/4 of SE 1/4																											
George J. Owen	State of Minnesota	SE 1/4 of SE 1/4					40			70	70	T	120		120	40	120	40	120										
State of Minnesota																													
							26						387		387	117		117											

SOLD FOR TAXES	VALUATIONS BY SCHOOL DISTRICTS AS EQUALIZED BY DEPARTMENT OF TALLATION						Tax including State Homestead	State Tax on Non-Homestead	SPECIAL TAXES	TOTAL TAXES	PAID	WHEN PAID	Number of Receipt	March Settlement 1959	June Settlement 1959	Penalty	November Settlement 1959	Penalty	Collections to First Monday in January 1960	Penalty	Delinquent on First Monday in January 1960	Total Delinquent Tax and Penalty	REMARKS	
	District No.	District No.	District No.	District No.	District No.	District No.																		
	Rate	Rate	Rate	Rate	Rate	Rate																		
	37					852	24		876		PAID IN FULL	APR 27 1959	5660		876									16679
	40					922	26		948		PAID IN FULL	APR 27 1959	5660		948									16679
	40					922	26		948		PAID IN FULL	APR 27 1959	5660		948									16679
	117					2696	76		2772															

Woodland
 Positives Beach
 Resioe Beach
 Taffoy Bay
 Sturgeon
 Aldamore Beach

Assessment Roll and Tax List of Real Property in the Town of Powers

* Indicate Type of Property: R-Residential, C-Commercial, I-Industrial, U-Utility, F-Farm, L-Lakeshore, T-Timber, M-Mineral

Table with columns: IN WHOSE NAME ASSESSED, TO WHOM TRANSFERRED, SUBDIVISION, TRUE AND FULL VALUATIONS, ASSESSED VALUATIONS, FINAL EQUALIZED VALUE. Includes handwritten entries for various property owners like Mary M. Steen and Thomas J. & Ida DeVasseur.

Cass County, Minnesota, for Taxes for the Year 1958.

Table with columns: VALUATIONS BY SCHOOL DISTRICTS AS EQUALIZED BY DEPARTMENT OF TAXATION, TAX INCLUDING STATE HOMESTEAD, SPECIAL TAXES, TOTAL TAXES, PAID, WHEN PAID, Number of Receipt, March Settlement, June Settlement, November Settlement, Collections to First Monday in January 1960, Delinquent on First Monday in January 1960, Total Delinquent Tax and Penalty, REMARKS. Includes handwritten entries for various property owners.

Assessment Roll and Tax List of Real Property in the Town of Powers, Cass County, Minnesota, for Taxes for the Year 1958.

Cass County, Minnesota, for Taxes for the Year 1958.

Form 30D - Indicate Type of Property: R-Residential, C-Commercial, I-Industrial, U-Utility, F-Farm, L-Lakeshore, T-Timber, M-Mineral

Table with columns: IN WHOSE NAME ASSESSED, TO WHOM TRANSFERRED, SUBDIVISION, TRUE AND FULL VALUATIONS (LAND, BUILDINGS, MACHINERY, TOTAL), ASSESSED VALUATIONS (RURAL, ALL OTHER, MACHINERY, TOTAL ASSESSED), and FINAL EQUALIZED VALUE.

Table with columns: SOLD FOR TAXES, VALUATIONS BY SCHOOL DISTRICTS AS EQUALIZED BY DEPARTMENT OF TALLION, SPECIAL TAXES, TOTAL TAXES, PAID, WHEN PAID, Number of Receipt, March Settlement 1959, June Settlement 1959, Penalty, November Settlement 1959, Penalty, Collections to First Monday in January 1960, Penalty, Delinquent on First Monday in January 1960, Total Delinquent Tax and Penalty, REMARKS.

Assessment Roll and Tax List of Real Property in the Town of Powers, Cass County, Minnesota, for Taxes for the Year 1958.

Form 500 (2-5-58) MINN. STAT. ANN. § 263.01

Table with columns: IN WHOSE NAME ASSESSED, TO WHOM TRANSFERRED, SUBDIVISION, TRUE AND FULL VALUATIONS (LAND, BUILDINGS, MACHINERY, TOTAL), ASSESSED VALUATIONS (RURAL, ALL OTHER, MACHINERY, TOTAL ASSESSED), FINAL EQUALIZED VALUE.

Table with columns: SOLD FOR TAXES, VALUATIONS BY SCHOOL DISTRICTS AS EQUALIZED BY DEPARTMENT OF TAXATION, TAX INCLUDING STATE HOMESTEAD, SPECIAL TAXES, TOTAL TAXES, PAID, WHEN PAID, Number of Receipt, March Settlement 1959, June Settlement 1959, Penalty, November Settlement 1959, Penalty, Collections to First Monday in January 1960, Penalty, Delinquent on First Monday in January 1960, Total Delinquent Tax and Penalty, REMARKS.

Woodland Deshlores Beach, Echo Beach, Troy Bay, Wildmore Beach

Assessment Roll and Tax List of Real Property in the Town of Powers, Cass County, Minnesota

Indicate Type of Property: R-Residential, C-Commercial, I-Industrial, U-Utility, F-Farm, L-Lakeshore, T-Timber, M-Mineral

Cass County, Minnesota, for Taxes for the Year 1958.

Table with columns: IN WHOSE NAME ASSESSED, TO WHOM TRANSFERRED, DESCRIPTION OF PROPERTY, TRUE AND FULL VALUATIONS, ASSESSED VALUATIONS, FINAL EQUALIZED VALUE. Rows include property owners like Ralph P. Sundry, Otto Kaste, Chester C. & Agnes M. Curney, Wm. H. Ralston, William Russell, Wm. F. Russell, Wm. & Lila Russell, Arnold A. Anderson, Arvid & Lorraine Anderson, William E. Owen, and State of Minnesota.

Table with columns: VALUATIONS BY SCHOOL DISTRICTS AS EQUALIZED BY DEPARTMENT OF TALLATION, TAXES, PAID, WHEN PAID, SPECIAL TAXES, TOTAL TAXES, PAID, WHEN PAID, Number of Receipt, March Settlement 1959, June Settlement 1959, Penalty, November Settlement 1959, Penalty, Collections to First Monday in January 1960, Penalty, Delinquent on First Monday in January 1960, Total Delinquent Tax and Penalty, REMARKS. Includes handwritten notes like 'PAID IN FULL' and dates.

Woodland Beaches Beach Jessie Beach Troy Bay Sweeny Wilmore Beach

Assessment Roll and Tax List of Real Property in the Town of Powers

* Indicate Type of Property: R-Residential, C-Commercial, I-Industrial, U-Utility, F-Farm, L-Lakeshore, T-Timber, M-Mineral

Table with columns: IN WHOSE NAME ASSESSED, TO WHOM TRANSFERRED, DESCRIPTION OF PROPERTY, TRUE AND FULL VALUATIONS, ASSESSED VALUATIONS, FINAL EQUALIZED VALUE. Includes handwritten entries for various property owners like Laverne & Martha L. Vincent.

Cass County, Minnesota, for Taxes for the Year 1958.

Table with columns: SOLD FOR TAXES, VALUATIONS BY SCHOOL DISTRICTS AS EQUALIZED BY DEPARTMENT OF TAXATION, SPECIAL TAXES, TOTAL TAXES, PAID, WHEN PAID, Number of Receipt, March Settlement 1959, June Settlement 1959, Penalty, November Settlement 1959, Collections to First Monday in January 1960, Delinquent on First Monday in January 1960, Total Delinquent Tax and Penalty, REMARKS. Includes handwritten entries for various tax payments.

Assessment Roll and Tax List of Real Property in the Town of Powers of Powers, Minnesota

Cass County, Minnesota, for Taxes for the Year 1958.

Form SD-1 (MINN.) REVISION 7-15-57

* Indicate Type of Property: R-Residential, C-Commercial, I-Industrial, U-Utility, F-Farm, L-Lakeshore, T-Timber, M-Mineral

IN WHOSE NAME ASSESSED	TO WHOM TRANSFERRED	DESCRIPTION OF PROPERTY		TRUE AND FULL VALUATIONS											FINAL EQUALIZED VALUE	VALUATIONS BY SCHOOL DISTRICTS AS EQUALIZED BY DEPARTMENT OF TAXATION										REMARKS																				
				SUBDIVISION	Sec. or Lot	Town or Block	No. of Acres of Land	No. of School District	Indicate Homestead Tax or No.	Indicate Agricultural Tax or No.	Indicate Type of Property	ASSESSED VALUATIONS					TOTAL ASSESSED VALUE	Total Assessed Value as Equalized by the Board of Review	SCHOOL DISTRICTS						TOTAL TAXES		PAID	WHEN PAID	Number of Receipt	March Settlement 1959	June Settlement 1959	Penalty	November Settlement 1959	Penalty	Collections to First Monday in January 1960	Penalty	Delinquent on First Monday in January 1960	Total Delinquent Tax and Penalty								
												LAND Excludes Structures and Improvements	BUILDINGS and Other Structures	MACHINERY Permanently Attached to Real Estate		TOTAL True and Full Value			RURAL		MACHINERY Permanently Attached to Real Estate	TOTAL ASSESSED VALUE	District No.	District No.															District No.	District No.	District No.	District No.	District No.	District No.	District No.	District No.
																			Homestead Up to \$4,000 20%	Over \$4,000 and Non-Homestead 33 1/3%																										
State of Minnesota		1	NE 1/4 of NE 1/4		11	13732	21																																							
State of Minnesota		2	NW 1/4 of NE 1/4																																											
State of Minnesota		3	SW 1/4 of NE 1/4																																											
State of Minnesota		4	SE 1/4 of NE 1/4																																											
Paul J. & Mary J. Eklund		5	1 ac. of Lot 2					30						20																																
Alfred D. & Hazel G. Eason		6	NE 1/4 of NW 1/4 Lot 1 less sold			2032			649					10																																
Paul J. & Mary J. Eklund		7	NW 1/4 of NW 1/4 1 ac. of Lot 2					30						10																																
Norman H. & Martha L. Wolf		8	Lot 2 less lots 1 to 7 inc. Plat of Survey say 84 less to Josephson & Gillespie all unpletted portion of lot 2 lying S. 9 of lots 3-4-5-6-7-8-9 of Survey say			2271		186	1200					462																																
Wendell M. & Louise Berger		9	750					75						25																																
Richard B. & Esther M. Gillespie		10	165' x 396' x 152' x 165' of Lot 1					74	1200					458																																
Paul J. Eklund		11	1/4 of NW 1/4 NE 1/4 of SW 1/4			40		78						26																																
Ann Marie Sarrano Anderson		12	NW 1/4 of SW 1/4			40		60						20																																
State of Minnesota		13	SW 1/4 of SW 1/4																																											
State of Minnesota		14	SE 1/4 of SW 1/4 75' wide E-W on N.E. corner of Lot 1					30						10																																
Richard B. & Esther M. Gillespie		15																																												
State of Minnesota		16	NE 1/4 of SE 1/4																																											
State of Minnesota		17	NW 1/4 of SE 1/4																																											
State of Minnesota		18	SW 1/4 of SE 1/4																																											
State of Minnesota		19	SE 1/4 of SE 1/4																																											
Anthony J. & Charlotte H. DeBlon		20	449.45' x 185' x 350' x 368.3' x 189.7' x 300' of Lot 1			47		45	150					65																																
Continued Next Page						14033			908	2599				4507	110	1319																														

Abate # 7780

PAID FOR TAXES

PAID IN FULL APR 27 1959 3442

PAID IN FULL APR 27 1959 5379

PAID IN FULL APR 27 1958 3442

2nd HALF PAID SEP 16 1959 11608

1st Half Paid MAY 18 1959 10817

2nd HALF PAID OCT 30 1958 16939

1st HALF PAID MAY 21 1959 16077

2nd HALF PAID SEP 16 1959 11608

1st Half Paid MAY 18 1959 10817

PAID IN FULL APR 27 1959 10818

PAID IN FULL APR 27 1958 3442

PAID IN FULL APR 17 1959 5379

49.32 Abated

642

10696

10725

10686

10504

642

10695

10541

10695

49.32 Abated

Assessment Roll and Tax List of Real Property in the Town of Powers

Cass County, Minnesota, for Taxes for the Year 1958.

Table with columns for Assessed Valuations, School Districts, Taxes, and Payment Status. Includes handwritten entries for property owners like Richard B. & Esther M. Gillespie and H. M. Shimomina.

Assessment Roll and Tax List of Real Property in the Town of Powers

Cass County, Minnesota, for Taxes for the Year 1958.

Table with columns: IN WHOSE NAME ASSESSED, TO WHOM TRANSFERRED, DESCRIPTION OF PROPERTY, TRUE AND FULL VALUATIONS, ASSESSED VALUATIONS, VALUATIONS BY SCHOOL DISTRICTS AS EQUALIZED BY DEPARTMENT OF TAXATION, SOLD FOR TAXES, PAID, WHEN PAID, Number of Receipt, March Settlement 1959, June Settlement 1959, November Settlement 1959, Penalty, Collections to First Monday in January 1960, Delinquent on First Monday in January 1960, Total Delinquent Tax and Penalty, REMARKS.

Woodland Reservoirs Beach Reshoe Beach Rutley Bay Swano Hillmore Beach

Assessment Roll and Tax List of Real Property in the

Town of Powers

Cass County, Minnesota, for Taxes for the Year 1958.

Indicate Type of Property: R-Residential, C-Commercial, I-Industrial, U-Utility, F-Farm, L-Lakeshore, T-Timber, M-Mineral

Table with columns: IN WHOSE NAME ASSESSED, TO WHOM TRANSFERRED, DESCRIPTION OF PROPERTY, TRUE AND FULL VALUATIONS, ASSESSED VALUATIONS, VALUATIONS BY SCHOOL DISTRICTS AS EQUALIZED BY DEPARTMENT OF TAXATION, SOLD FOR TAXES, PAID, WHEN PAID, Number of Receipt, March Settlement 1959, June Settlement 1959, November Settlement 1959, Penalty, Collections to First Monday in January 1960, Delinquent on First Monday in January 1960, Total Delinquent Tax and Penalty, REMARKS.

Assessment Roll and Tax List of Real Property in the Town of Powers

Cass County, Minnesota, for Taxes for the Year 1958.

Form SCD 1-14-58 MINN. STAT. 260.01

Table with columns: IN WHOSE NAME ASSESSED, TO WHOM TRANSFERRED, SUBDIVISION, TRUE AND FULL VALUATIONS, ASSESSED VALUATIONS, VALUATIONS BY SCHOOL DISTRICTS AS EQUALIZED BY DEPARTMENT OF TAXATION, SPECIAL TAXES, TOTAL TAXES, PAID, WHEN PAID, Number of Receipt, March Settlement 1959, June Settlement 1959, Penalty, November Settlement 1959, Penalty, Collections to First Monday in January 1960, Penalty, Delinquent on First Monday in January 1960, Total Delinquent Tax and Penalty, REMARKS.

A. J. Roberts & R. L. Sharpe
State of Minnesota

William Curney
Ray & Gertrude Curney
State of Minnesota

Paul L. Britz
State of Minnesota

Lloyd & Dagmar Bradford
Kenneth Scott
State of Minnesota

State of Minnesota
State of Minnesota
State of Minnesota

Arthur Reuck

Miller
Woodland
DeSoto
Beach
Rescue
Beach
Lafayette
Bay
Savage
Wilmore
Beach

Assessment Roll and Tax List of Real Property in the Town of Powers

Cass County, Minnesota, for Taxes for the Year 1958.

Indicate Type of Property: R-Residential, C-Commercial, I-Industrial, U-Utility, F-Farm, L-Lakeshore, T-Timber, M-Mineral

Table with columns: IN WHOSE NAME ASSESSED, TO WHOM TRANSFERRED, DESCRIPTION OF PROPERTY, TRUE AND FULL VALUATIONS, ASSESSED VALUATIONS, VALUATIONS BY SCHOOL DISTRICTS AS EQUALIZED BY DEPARTMENT OF TAXATION, TAXES, PAID, WHEN PAID, Number of Receipt, March Settlement 1959, June Settlement 1959, Penalty, November Settlement 1959, Penalty, Collections to First Monday in January 1960, Penalty, Delinquent on First Monday in January 1960, Total Delinquent Tax and Penalty, REMARKS.

Assessment Roll and Tax List of Real Property in the Town of Powers, Minnesota

Cass County, Minnesota, for Taxes for the Year 1958.

Table with columns: IN WHOSE NAME ASSESSED, TO WHOM TRANSFERRED, DESCRIPTION OF PROPERTY, TRUE AND FULL VALUATIONS, ASSESSED VALUATIONS, VALUATIONS BY SCHOOL DISTRICTS AS EQUALIZED BY DEPARTMENT OF TAXATION, SOLD FOR TAXES, PAID, WHEN PAID, March Settlement, June Settlement, November Settlement, Collections to First Monday in January 1960, Delinquent on First Monday in January 1960, Total Delinquent Tax and Penalty, REMARKS.

Assessment Roll and Tax List of Real Property in the Town of Powers, Cass County, Minnesota, for Taxes for the Year 1958.

Table with columns: IN WHOSE NAME ASSESSED, TO WHOM TRANSFERRED, DESCRIPTION OF PROPERTY, TRUE AND FULL VALUATIONS, ASSESSED VALUATIONS, VALUATIONS BY SCHOOL DISTRICTS AS EQUALIZED BY DEPARTMENT OF TAXATION, SOLD FOR TAXES, PAID, WHEN PAID, Number of Receipt, March Settlement 1959, June Settlement 1959, November Settlement 1959, Collections to First Monday in January 1960, Delinquent on First Monday in January 1960, Total Delinquent Tax and Penalty, REMARKS.

Assessment Roll and Tax List of Real Property in the Town of Powers, Minnesota

Form 507 (1954) MINN. STATE DEPT. OF REVENUE

Table with columns: IN WHOSE NAME ASSESSED, TO WHOM TRANSFERRED, DESCRIPTION OF PROPERTY, TRUE AND FULL VALUATIONS, ASSESSED VALUATIONS, FINAL EQUALIZED VALUE. Includes handwritten entries for Jean Mc Dowell and L. S. Curry.

Cass County, Minnesota, for Taxes for the Year 1958.

Table with columns: SOLD FOR TAXES, VALUATIONS BY SCHOOL DISTRICTS AS EQUALIZED BY DEPARTMENT OF TAXATION, Tax including State Homestead, SPECIAL TAXES, TOTAL TAXES, PAID, WHEN PAID, Number of Receipt, March Settlement 1959, June Settlement 1959, Penalty, November Settlement 1959, Penalty, Collections to First Monday in January 1960, Penalty, Delinquent on First Monday in January 1960, Total Delinquent Tax and Penalty, REMARKS.

Assessment Roll and Tax List of Real Property in the Town of Powers

Cass County, Minnesota, for Taxes for the Year 1958

Table with columns: IN WHOSE NAME ASSESSED, TO WHOM TRANSFERRED, DESCRIPTION OF PROPERTY, TRUE AND FULL VALUATIONS, ASSESSED VALUATIONS, VALUATIONS BY SCHOOL DISTRICTS AS EQUALIZED BY DEPARTMENT OF TAXATION, SOLD FOR TAXES, PAID, WHEN PAID, SPECIAL TAXES, TOTAL TAXES, PAID, WHEN PAID, March Settlement 1959, June Settlement 1959, Penalty, November Settlement 1959, Penalty, Collections to First Monday in January 1960, Penalty, Delinquent on First Monday in January 1960, Total Delinquent Tax and Penalty, REMARKS.

Assessment Roll and Tax List of Real Property in the Town of Powers, Minnesota

Cass County, Minnesota, for Taxes for the Year 1958.

Table with columns: IN WHOSE NAME ASSESSED, TO WHOM TRANSFERRED, DESCRIPTION OF PROPERTY, TRUE AND FULL VALUATIONS, ASSESSED VALUATIONS, VALUATIONS BY SCHOOL DISTRICTS AS EQUALIZED BY DEPARTMENT OF TAXATION, TAXES, PAID, WHEN PAID, etc.

Assessment Roll and Tax List of Real Property in the Town of Powers

Cass County, Minnesota, for Taxes for the Year 1958.

Form 307 DEPARTMENT OF REVENUE, MINNESOTA
* Indicate Type of Property: R-Residential, C-Commercial, I-Industrial, U-Utility, F-Farm, L-Lakeshore, T-Timber, M-Mineral

DESCRIPTION OF PROPERTY		TRUE AND FULL VALUATIONS				ASSESSED VALUATIONS								FINAL EQUALIZED VALUE
SUBDIVISION	Sec. of Lot, Town or Block, Rtg.	Number of Acres of Land	No. School District	Indicate Homestead Yes or No	Indicate Agricultural Yes or No	Indicate Type of Property	RURAL		ALL OTHER				TOTAL ASSESSED VALUE	
							LAND Exclusive of Structures and Improvements	BUILDINGS and Other Structures	MACHINERY Permanently Attached to Real Estate	TOTAL True and Full Value	Homestead Up to \$4,000 20%	Over \$4,000 and Non-Homestead 33 1/3%		Timber Land Class 3e 20%
							Dollars	Dollars	Dollars	Dollars	Dollars	Dollars	Dollars	Dollars
1	NEW 1/4 NE 1/4	24 139 30	114											
2	NW 1/4 of NE 1/4													
3	SW 1/4 of NE 1/4													
4	SE 1/4 of NE 1/4													
5	<i>Verion + Concetta Fox</i>	<i>1 ac. of NW 1/4 of Sec 24</i>				R	20	230	260	52		52		
6	NE 1/4 of NW 1/4													
7	NW 1/4 of NW 1/4													
8	SW 1/4 of NW 1/4													
9	SE 1/4 of NW 1/4													
10	<i>Orville J + Lisette B. Callahan</i>	<i>1 ac. of Lot 3</i>				L	66		66	22		22		
11	NE 1/4 of SW 1/4													
12	NW 1/4 of SW 1/4													
13	SW 1/4 of SW 1/4													
14	SE 1/4 of SW 1/4													
15														
16	NE 1/4 of SE 1/4													
17	NW 1/4 of SE 1/4													
18	SW 1/4 of SE 1/4													
19	SE 1/4 of SE 1/4													
20							30	230	260	52		52		

SOLD FOR TAXES	VALUATIONS BY SCHOOL DISTRICTS AS EQUALIZED BY DEPARTMENT OF TAXATION						Tax including State Homestead	State Tax on Non-Homestead	SPECIAL TAXES	TOTAL TAXES	PAID	WHEN PAID	Number of Receipt	March Settlement 1959	June Settlement 1959	Penalty	November Settlement 1959	Penalty	Collections to First Monday in January 1960	Penalty	Delinquent on First Monday in January 1960	Total Delinquent Tax and Penalty	REMARKS
	District No.	District No.	District No.	District No.	District No.	District No.																	
	Rate	Rate	Rate	Rate	Rate	Rate																	
1																							
2																							
3																							
4																							
5																							
6																							
7																							
8																							
9																							
10																							
11																							
12																							
13																							
14																							
15																							
16																							
17																							
18																							
19																							
20																							

Woodland
Residence Beach
Reshoe Beach
Lutroy Bay
Sumo
Wildmare Beach

Assessment Roll and Tax List of Real Property in the Town of Powers of Cass County, Minnesota, for Taxes for the Year 1958.

* Indicate Type of Property: R-Residential, C-Commercial, I-Industrial, U-Utility, F-Farm, L-Lakeshore, T-Timber, M-Mineral

Table with columns: IN WHOSE NAME ASSESSED, TO WHOM TRANSFERRED, DESCRIPTION OF PROPERTY, TRUE AND FULL VALUATIONS, ASSESSED VALUATIONS, VALUATIONS BY SCHOOL DISTRICTS AS EQUALIZED BY DEPARTMENT OF TAXATION, SOLD FOR TAXES, PAID, WHEN PAID, Number of Receipts, March Settlement, June Settlement, Penalty, November Settlement, Collections to First Monday in January 1960, Delinquent on First Monday in January 1960, Total Delinquent Tax and Penalty, REMARKS.

Continued Next Page

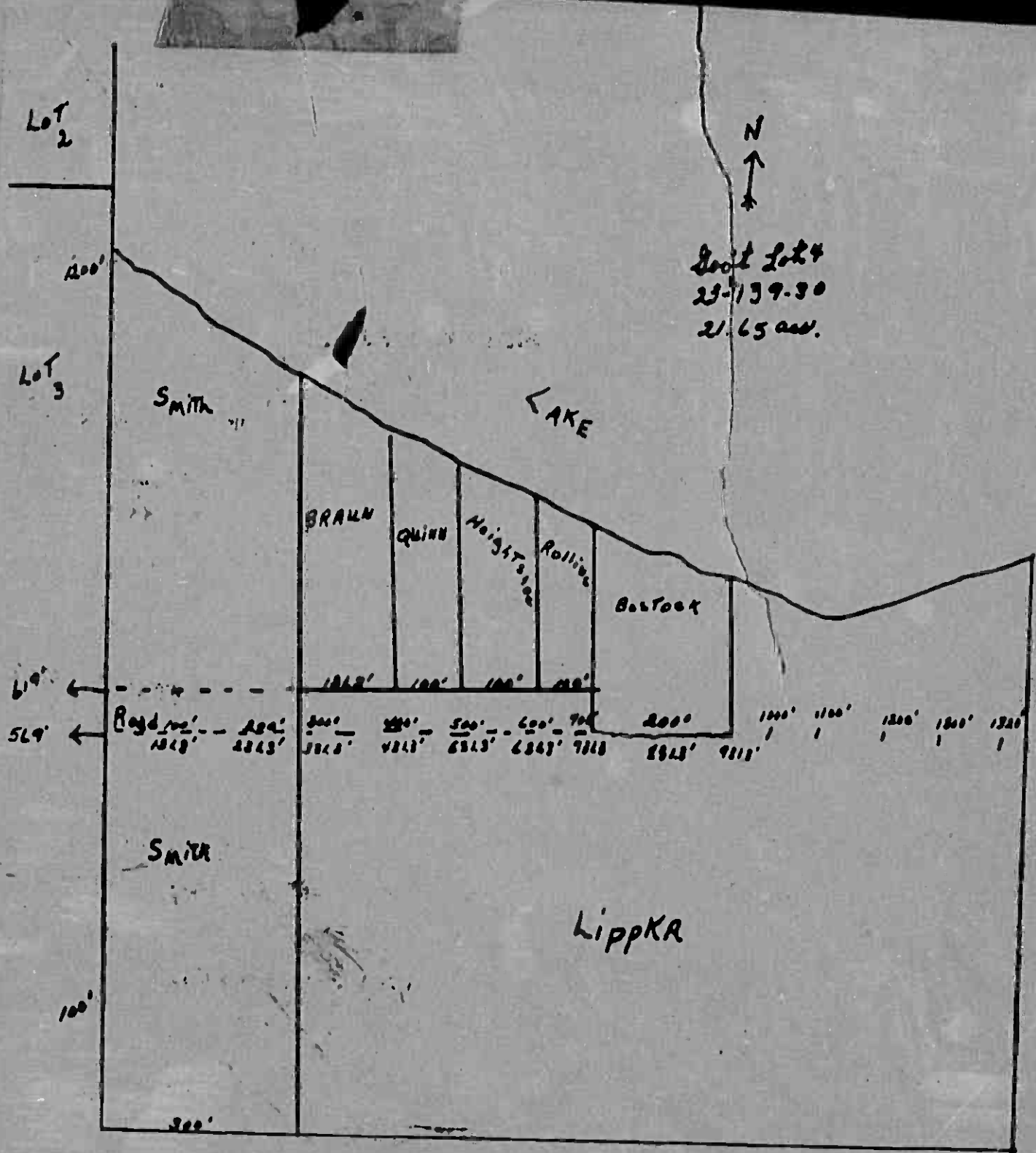
Woodland Park, Des Moines Beach, Reshoe Beach, Lufloy Bay, Grand, Wilmore Beach

Assessment Roll and Tax List of Real Property in the Town of Powers

Cass County, Minnesota, for Taxes for the Year 1958.

Indicate Type of Property: R-Residential, C-Commercial, I-Industrial, U-Utility, F-Farm, L-Lakeshore, T-Timber, M-Mineral

Table with columns: IN WHOSE NAME ASSESSED, TO WHOM TRANSFERRED, DESCRIPTION OF PROPERTY, TRUE AND FULL VALUATIONS, ASSESSED VALUATIONS, VALUATIONS BY SCHOOL DISTRICTS AS EQUALIZED BY DEPARTMENT OF TAXATION, TAXES, PAID, WHEN PAID, etc.



Lot 2

Lot 3

N
↑

Subst Lot 4
 23-139.30
 21.65 ac.

SMITH

LAKE

BRAUN

QUINN

Heigstson

Rollins

Bostock

SMITH

Lippka

100'

619'

569'

100'

300'

1012'

100'

100'

100'

200'

1000'

1100'

1200'

1300'

1320'

Road 100' - 100'
 1040' 1043'

300' - 300'
 3040'

200' - 200'
 4843'

500' - 500'
 6843'

600' - 700'
 6843' 7118'

2000'
 8943' 9118'

Assessment Roll and Tax List of Real Property in the Town of Powers

Cass County, Minnesota, for Taxes for the Year 1958.

Form SCD 1957-58 DEPT. OF REVENUE * Indicate Type of Property: R-Residential, C-Commercial, I-Industrial, U-Utility, F-Farm, L-Lakeshore, T-Timber, M-Mineral

Table with columns: IN WHOSE NAME ASSESSED, TO WHOM TRANSFERRED, DESCRIPTION OF PROPERTY, TRUE AND FULL VALUATIONS, ASSESSED VALUATIONS, VALUATIONS BY SCHOOL DISTRICTS AS EQUALIZED BY DEPARTMENT OF TAXATION, TAXES, PAID, WHEN PAID, etc.

Assessment Roll and Tax List of Real Property in the Town of Power, Cass County, Minnesota, for Taxes for the Year 1958.

Cass County, Minnesota, for Taxes for the Year 1958.

Main table with columns: IN WHOSE NAME ASSESSED, TO WHOM TRANSFERRED, DESCRIPTION OF PROPERTY, TRUE AND FULL VALUATIONS, ASSESSED VALUATIONS, VALUATIONS BY SCHOOL DISTRICTS AS EQUALIZED BY DEPARTMENT OF TAXATION, SOLD FOR TAXES, SPECIAL TAXES, TOTAL TAXES, PAID, WHEN PAID, Number of Receipt, March Settlement 1959, June Settlement 1959, November Settlement 1959, Collections to First Monday in January 1960, Delinquent on First Monday in January 1960, Total Delinquent Tax and Penalty, REMARKS.

Handwritten names and addresses: S.P. Hanson, Elgin Hinman, Carl B. Hawkins, Otto L. & Eleanor S. Peklo, Geneva Bondy, State of Minnesota.

Summary totals at the bottom of the table: 443 70, 403 40, 1907, 800, 2707, 320, 369, 689, 612, 136 44, 190, 138 34, 87 64, 15 32, 95 32.

Vertical text on the right edge of the page: Woodland Pastories Beach, eshoe Beach, Furby Day, Samo, Wildmore Beach.

Assessment Roll and Tax List of Real Property in the Town of Powers, Cass County, Minnesota

* Indicate Type of Property: R-Residential, C-Commercial, I-Industrial, U-Utility, F-Farm, L-Lakeshore, T-Timber, M-Mineral

Table with columns: IN WHOSE NAME ASSESSED, TO WHOM TRANSFERRED, DESCRIPTION OF PROPERTY, TRUE AND FULL VALUATIONS, ASSESSED VALUATIONS, and FINAL EQUALIZED VALUE. Includes handwritten entries for Northern Shore, Inc. and various lots.

Cass County, Minnesota, for Taxes for the Year 1958.

Table with columns: SOLD FOR TAXES, VALUATIONS BY SCHOOL DISTRICTS AS EQUALIZED BY DEPARTMENT OF TAXATION, SPECIAL TAXES, TOTAL TAXES, PAID, WHEN PAID, and REMARKS. Includes handwritten entries for various districts and tax payments.

Assessment Roll and Tax List of Real Property in the Town of Powers

Cass County, Minnesota, for Taxes for the Year 1958.

Indicate Type of Property: R-Residential, C-Commercial, I-Industrial, U-Utility, F-Farm, L-Lakeshore, T-Timber, M-Mineral

Table with columns: IN WHOSE NAME ASSESSED, TO WHOM TRANSFERRED, DESCRIPTION OF PROPERTY, TRUE AND FULL VALUATIONS, ASSESSED VALUATIONS, VALUATIONS BY SCHOOL DISTRICTS AS EQUALIZED BY DEPARTMENT OF TAXATION, SPECIAL TAXES, TOTAL TAXES, PAID, WHEN PAID, Number of Receipt, March Settlement 1959, June Settlement 1959, November Settlement 1959, Collections to First Monday in January 1960, Delinquent on First Monday in January 1960, Total Delinquent Tax and Penalty, REMARKS.

Assessment Roll and Tax List of Real Property in the Town of Powers

Indicate Type of Property: R-Residential, C-Commercial, I-Industrial, U-Utility, F-Farm, L-Lakeshore, T-Timber, M-Mineral

Cass County, Minnesota, for Taxes for the Year 1958.

Table with columns: IN WHOSE NAME ASSESSED, TO WHOM TRANSFERRED, DESCRIPTION OF PROPERTY, TRUE AND FULL VALUATIONS, ASSESSED VALUATIONS, FINAL EQUALIZED VALUE. Includes handwritten entries for Gladys Sjorsedal, Edwin Falk, Margaret A. Luebben, etc.

Table with columns: VALUATIONS BY SCHOOL DISTRICTS AS EQUALIZED BY DEPARTMENT OF TAXATION, TAX INCLUDING STATE HOMESTEAD, SPECIAL TAXES, TOTAL TAXES, PAID, WHEN PAID, Number of Receipt, March Settlement 1959, June Settlement 1959, November Settlement 1959, Collections to First Monday in January 1960, Delinquent on First Monday in January 1960, Total Delinquent Tax and Penalty, REMARKS.

Woodland Beaches Beach Reshore Beach Ruby Bay Suno W11dhere Beach

Assessment Roll and Tax List of Real Property in the Town of Rosera,
 * Indicate Type of Property: R-Residential, C-Commercial, I-Industrial, U-Utility, F-Farm, L-Lakeshore, T-Timber, M-Mineral

Cass County, Minnesota, for Taxes for the Year 1958.

IN WHOSE NAME ASSESSED	TO WHOM TRANSFERRED	DESCRIPTION OF PROPERTY		Number of Acres of Land Acres 100ths	School District	Indicate Homestead Yes or No	Indicate Agricultural Yes or No	Indicate Type of Property	TRUE AND FULL VALUATIONS				ASSESSED VALUATIONS					SOLD FOR TAXES	VALUATIONS BY SCHOOL DISTRICTS AS EQUALIZED BY DEPARTMENT OF TAXATION						SPECIAL TAXES	TOTAL TAXES	PAID	WHEN PAID	Number of Receipts	March Settlement 1959	June Settlement 1959	November Settlement 1959	Penalty	Collections to First Monday in January 1960	Penalty	Delinquent on First Monday in January 1960	Total Delinquent Tax and Penalty	REMARKS										
		SUBDIVISION	Sec. of Lot						Town or Block	Rd.	LAND Exclusive of Structures and Improvements	BUILDINGS and Other Structures	MACHINERY Permanently Attached to Real Estate	TOTAL True and Full Value	RURAL		ALL OTHER			MACHINERY Permanently Attached to Real Estate	TOTAL ASSESSED VALUE	Total Assessed Value as Equalized by the Board of Review	FINAL EQUALIZED VALUE	District No.															District No.	District No.	District No.	District No.	District No.	Tax Including State Homestead	State Tax on Non-Homestead			
															Homestead Up to \$4,000 20%	Over \$4,000 and Non-Homestead 33 1/3%	Timber Land Class. A 20%		Homestead Up to \$4,000 25%					Over \$4,000 and Non-Homestead 40%															MACHINERY Permanently Attached to Real Estate 33 1/3%	Dollars	Dollars	Dollars	Dollars			Dollars	Dollars	Rate
Henry Edward Sabat				139 30																																												
Waldo E. Tushnet																																																

Walden
Woodland
Peshobies Beach
Peshoe Beach
Turkey Bay
Steno
Wilmere Beach

Assessment Roll and Tax List of Real Property in the Town of Powers

Cass County, Minnesota, for Taxes for the Year 1958.

Table with columns: IN WHOSE NAME ASSESSED, TO WHOM TRANSFERRED, DESCRIPTION OF PROPERTY, TRUE AND FULL VALUATIONS, ASSESSED VALUATIONS, VALUATIONS BY SCHOOL DISTRICTS AS EQUALIZED BY DEPARTMENT OF TAXATION, SOLD FOR TAXES, SPECIAL TAXES, TOTAL TAXES, PAID, WHEN PAID, Number of Receipt, March Settlement 1959, June Settlement 1959, Penalty, November Settlement 1959, Penalty, Collections to First Monday in January 1960, Delinquent on First Monday in January 1960, Total Delinquent Tax and Penalty, REMARKS.

22-98
6-52
37-50

Miller
Woodland
DeLoines Beach
Leshoe Beach
Luttrell Bay
Suanu
Willmore Beach

Assessment Roll and Tax List of Real Property in the Town of Powers

Cass County, Minnesota, for Taxes for the Year 1958.

Table with columns: IN WHOSE NAME ASSESSED, TO WHOM TRANSFERRED, DESCRIPTION OF PROPERTY, TRUE AND FULL VALUATIONS, ASSESSED VALUATIONS, VALUATIONS BY SCHOOL DISTRICTS AS EQUALIZED BY DEPARTMENT OF TAXATION, SOLD FOR TAXES, SPECIAL TAXES, TOTAL TAXES, PAID, WHEN PAID, Number of Receipt, March Settlement 1959, June Settlement 1959, November Settlement 1959, Collections to First Monday in January 1960, Penalty, Delinquent on First Monday in January 1960, Total Delinquent Tax and Penalty, REMARKS.

Loren Arthur + Mary Barbusch

Richard J. Snyder

Loren Barbusch + Mary Barbusch

Luella A. + Howard M. Gang

Wm. Knopf

Albert C. + Winnie E. Johnson

Loren Barbusch + Mary Barbusch

Woodland Parkhomes Beach Reshoe Beach Tully Bay Sunco Wildmore Beach

Indicate Type of Property: R-Residential, C-Commercial, I-Industrial, U-Utility, F-Farm, L-Lakeshore, T-Timber, M-Mineral

Table with columns: IN WHOSE NAME ASSESSED, TO WHOM TRANSFERRED, DESCRIPTION OF PROPERTY, TRUE AND FULL VALUATIONS, ASSESSED VALUATIONS, VALUATIONS BY SCHOOL DISTRICTS AS EQUALIZED BY DEPARTMENT OF TAXATION, SOLD FOR TAXES, PAID, WHEN PAID, Number of Receipt, March Settlement 1959, June Settlement 1959, November Settlement 1959, Penalty, Collections to First Monday in January 1960, Delinquent on First Monday in January 1960, Total Delinquent Tax and Penalty, REMARKS.

Palma G. & Royal C. Ambush

Wm. D. & Emma G. Adams

James F. & Elsie A. Cade

Vertical text on the right edge of the page: Miller, Woodland, Des Moines Beach, Reshoe Beach, Lullay Bay, Gunns, Wildmore Beach.

Assessment Roll and Tax List of Real Property in the Town of Powers

Indicate Type of Property: R-Residential, C-Commercial, I-Industrial, U-Utility, F-Farm, L-Lakeshore, T-Timber, M-Mineral

Cass County, Minnesota, for Taxes for the Year 1958.

Table with columns: IN WHOSE NAME ASSESSED, TO WHOM TRANSFERRED, DESCRIPTION OF PROPERTY, TRUE AND FULL VALUATIONS, ASSESSED VALUATIONS, VALUATIONS BY SCHOOL DISTRICTS AS EQUALIZED BY DEPARTMENT OF TAXATION, SOLD FOR TAXES, PAID, WHEN PAID, Number of Receipt, March Settlement 1959, June Settlement 1959, November Settlement 1959, Collections to First Monday in January 1960, Delinquent on First Monday in January 1960, Total Delinquent Tax and Penalty, REMARKS.

Woodland, Deaconess, Beach, Reshoe, Beach, Lufroy, Bay, Suanos, Wilmers, Beach

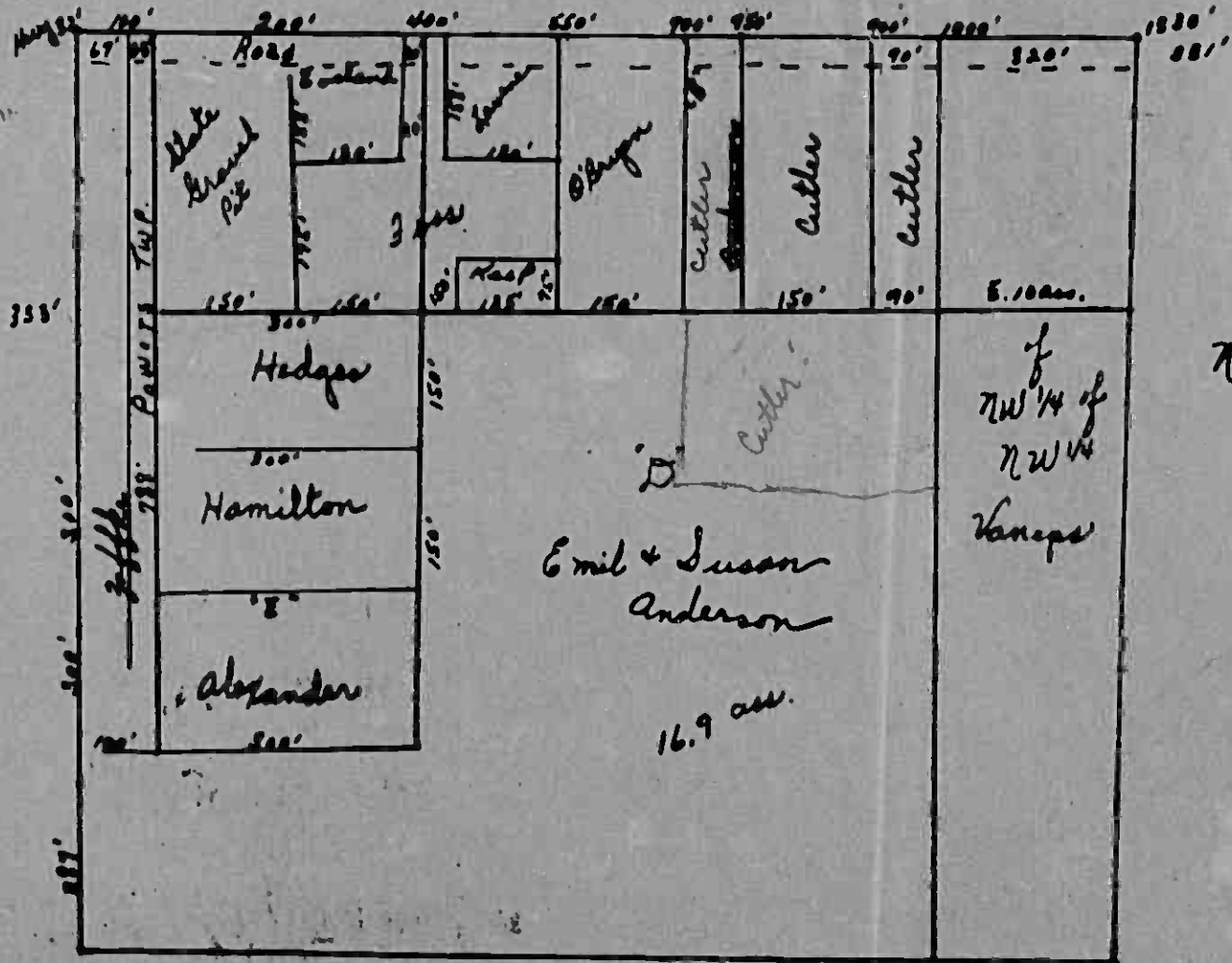
Assessment Roll and Tax List of Real Property in the Town of Powers of Powers

* Indicate Type of Property: R-Residential, C-Commercial, I-Industrial, U-Utility, F-Farm, L-Lakeshore, T-Timber, M-Mineral

Cass County, Minnesota, for Taxes for the Year 1958.

Table with columns: IN WHOSE NAME ASSESSED, TO WHOM TRANSFERRED, DESCRIPTION OF PROPERTY, TRUE AND FULL VALUATIONS, ASSESSED VALUATIONS, VALUATIONS BY SCHOOL DISTRICTS AS EQUALIZED BY DEPARTMENT OF TAXATION, TAXES, PAID, WHEN PAID, etc.

Woodland Beach Reshoe Beach Jeffrey Bay Suanos Wildmere Beach



NW 1/4 - NW 1/4
 32-139-30

Assessment Roll and Tax List of Real Property in the Town of Powers,
* Indicate Type of Property: R-Residential, C-Commercial, I-Industrial, U-Utility, F-Farm, L-Lakeshore, T-Timber, M-Mineral

Form 30D (1957) MINN. STATE TAX DEPT.

IN WHOSE NAME ASSESSED	TO WHOM TRANSFERRED	DESCRIPTION OF PROPERTY				No. School District	Indicates Homestead Tax or No	Indicates Agricultural Tax or No	Indicate Type of Property	TRUE AND FULL VALUATIONS				ASSESSED VALUATIONS						FINAL EQUALIZED VALUE
		SUBDIVISION	Sec. or Lot	Town or Block	Number of Acres of Land					LAND Exclusive of Structures and Improvements	BUILDINGS and Other Structures	MACHINERY Permanently Attached to Real Estate	TOTAL Trng and Full Value	RURAL		ALL OTHER		TOTAL ASSESSED VALUE	Total Assesed Value as Equalized by the Board of Review	
														Homestead Up to \$4,000 20%	Over \$4,000 and Non-Homestead 33 1/3 %	Timber Land Class 3e 20%	Homestead Up to \$4,000 25%			
Gerald & Bernadine Couland					1			R		30	700		730	146				146		
Claude & Mabel Wilkonn				52 13930	2			T	60				60	20				20		
					3															
					4															
					5															
					6															
					7															
					8															
					9															
					10															
					11															
					12															
					13															
					14															
					15															
					16															
					17															
					18															
					19															
					20				90	700		790	146	20				166		

Cass County, Minnesota, for Taxes for the Year 1958.

SOLD FOR TAXES	VALUATIONS BY SCHOOL DISTRICTS AS EQUALIZED BY DEPARTMENT OF TAXATION						Tax Including State Homestead	State Tax on Non-Homestead 6.5 Mills	SPECIAL TAXES	TOTAL TAXES	PAID	WHEN PAID	Number of Receipt	March Settlement 1959	June Settlement 1959	Penalty	November Settlement 1959	Penalty	Collections to First Monday in January 1960	Penalty	Delinquent on First Monday in January 1960	Total Delinquent Tax and Penalty	REMARKS		
	District No.	District No.	District No.	District No.	District No.	District No.																			
	Rate	Rate	Rate	Rate	Rate	Rate																			
	Mills	Mills	Mills	Mills	Mills	Mills																			
1				4	146				36 20		1 PAID IN FULL	MAY 29 1959	16705												
2					20				496	14	2 PAID IN FULL	APR 18 1959	5419		36 20									10630	
3																									
4																									
5																									
6																									
7																									
8																									
9																									
10																									
11																									
12																									
13																									
14																									
15																									
16																									
17																									
18																									
19																									
20																									

Woodland Beaches Beach, Jesloe Beach, Kirby Bay, Suno, Wildmore Beach

Part of Lot 1 - 32-139-80

Creek

Shank Wilkham

ada
ave

Dam

10' deep

147.5°

147.5°

Plot of E. Lake Shore

125' 0"

145'

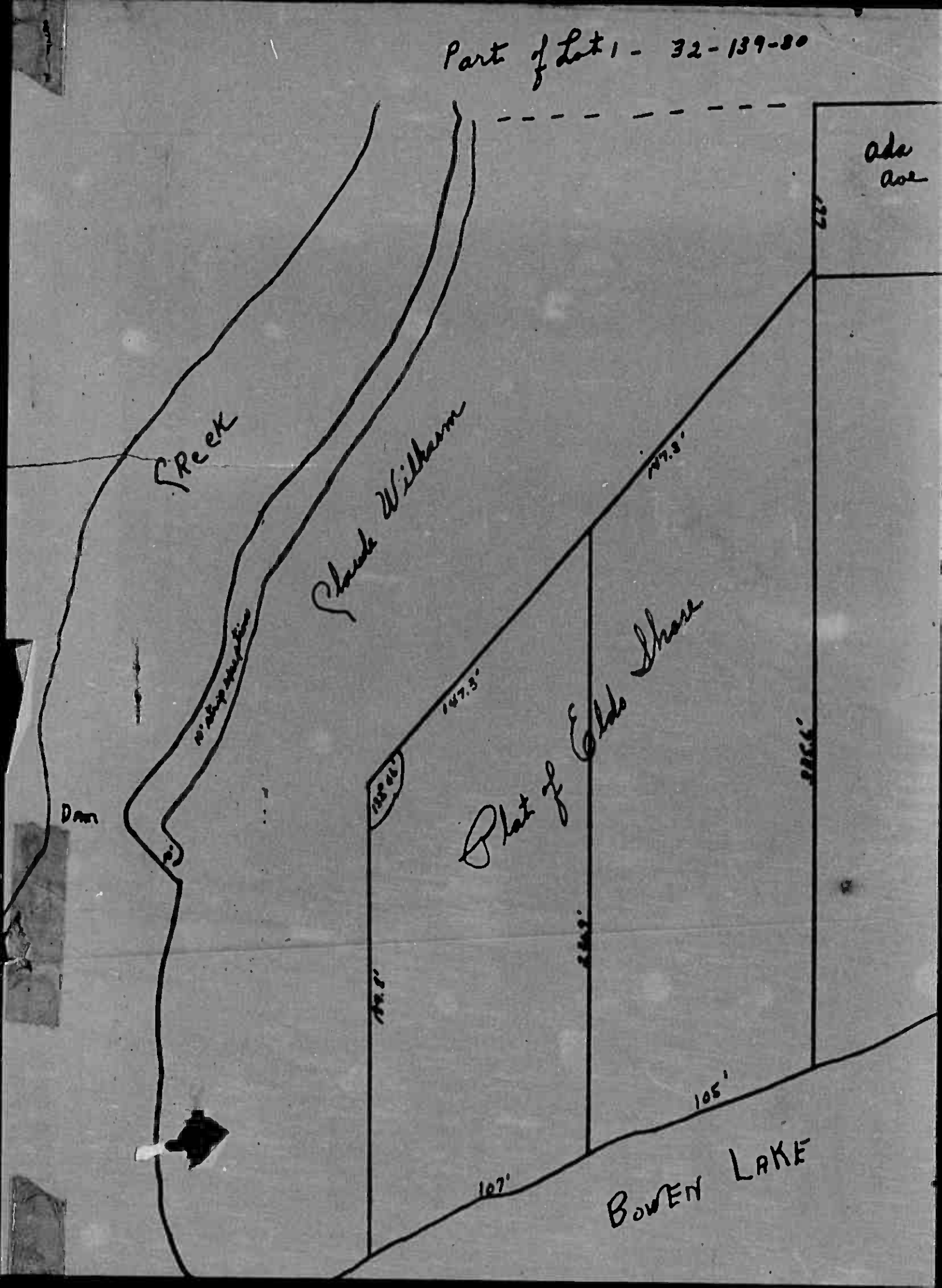
125'

125'

105'

107'

BOWEN LAKE



Assessment Roll and Tax List of Real Property in the Town of Powers

Cass County, Minnesota, for Taxes for the Year 1958.

Indicate Type of Property: R-Residential, C-Commercial, I-Industrial, U-Utility, F-Farm, L-Lakeshore, T-Timber, M-Mineral

Table with columns: IN WHOSE NAME ASSESSED, TO WHOM TRANSFERRED, SUBDIVISION, TRUE AND FULL VALUATIONS (LAND, BUILDINGS, MACHINERY, TOTAL), ASSESSED VALUATIONS (RURAL, ALL OTHER, TOTAL ASSESSED), and FINAL EQUALIZED VALUE.

Table with columns: VALUATIONS BY SCHOOL DISTRICTS AS EQUALIZED BY DEPARTMENT OF TAXATION, SOLD FOR TAXES, SPECIAL TAXES, TOTAL TAXES, PAID, WHEN PAID, Number of Receipt, March Settlement 1959, June Settlement 1959, November Settlement 1959, Penalty, Collections to First Monday in January 1960, Delinquent on First Monday in January 1960, Total Delinquent Tax and Penalty, REMARKS.

Vertical text on the right edge of the page, including 'Woodland', 'DeWolfs', 'Beach', 'Reshoe Beach', 'Fairy Bay', 'Stano', 'Wildmore Beach'.

Assessment Roll and Tax List of Real Property in the Town of Powers

Cass County, Minnesota, for Taxes for the Year 1958.

Indicate Type of Property: R-Residential, C-Commercial, I-Industrial, U-Utility, F-Farm, L-Lakeshore, T-Timber, M-Mineral

Table with columns: IN WHOSE NAME ASSESSED, TO WHOM TRANSFERRED, DESCRIPTION OF PROPERTY, TRUE AND FULL VALUATIONS, ASSESSED VALUATIONS, VALUATIONS BY SCHOOL DISTRICTS AS EQUALIZED BY DEPARTMENT OF TAXATION, TAXES, PAID, WHEN PAID, SPECIAL TAXES, TOTAL TAXES, REMARKS.

Assessment Roll and Tax List of Real Property in the Town of Powers

Indicate Type of Property: R-Residential, C-Commercial, I-Industrial, U-Utility, F-Farm, L-Lakeshore, T-Timber, M-Mineral

Cass County, Minnesota, for Taxes for the Year 1958.

Table with columns: IN WHOSE NAME ASSESSED, TO WHOM TRANSFERRED, DESCRIPTION OF PROPERTY, TRUE AND FULL VALUATIONS, ASSESSED VALUATIONS, VALUATIONS BY SCHOOL DISTRICTS AS EQUALIZED BY DEPARTMENT OF TAXATION, PAID, WHEN PAID, Number of Receipt, March Settlement 1959, June Settlement 1959, November Settlement 1959, Penalty, Collections to First Monday in January 1960, Delinquent on First Monday in January 1960, Total Delinquent Tax and Penalty, REMARKS.

Helen Snodgrass

Wm. H. + Emma V. Cadner

Wm. H. + Emma V. Cadner

State of Minnesota

Lyle + Jessie Coffland

State of Minnesota

Ada E. Miller

State of Minnesota

State of Minnesota

State of Minnesota

James + Inez Kidd

State of Minnesota

State of Minnesota

Virgil J. + Grace Alexander

State of Minnesota

State of Minnesota

10516

10528

10518

10534

10520

10519

10551

Woodland Lakeshores Beach Reshoe Beach Furloy Bay Sarno Waldmere Beach

Assessment Roll and Tax List of Real Property in the Town of Lowers

Cass County, Minnesota, for Taxes for the Year 1958.

Indicate Type of Property: R-Residential, C-Commercial, I-Industrial, U-Utility, F-Farm, L-Lakeshore, T-Timber, M-Mineral

IN WHOSE NAME ASSESSED	TO WHOM TRANSFERRED	SUBDIVISION	Sec. of Lot	Town or Block	Rng.	Number of Acres of Land	TRUE AND FULL VALUATIONS					ASSESSED VALUATIONS							FINAL EQUALIZED VALUE	SOLD FOR TAXES	VALUATIONS BY SCHOOL DISTRICTS AS EQUALIZED BY DEPARTMENT OF TAXATION						SPECIAL TAXES	TOTAL TAXES	PAID	WHEN PAID	Number of Receipt	March Settlement 1959	June Settlement 1959	Penalty	November Settlement 1959	Penalty	Collections to First Monday in January 1960	Penalty	Delinquent on First Monday in January 1960	Total Delinquent Tax and Penalty	REMARKS				
							LAND Exclusive of Structures and Improvements	BUILDINGS and Other Structures	MACHINERY Permanently Attached to Real Estate	TOTAL True and Full Value	RURAL		Timber Land Class 3e 20%	ALL OTHER		MACHINERY Permanently Attached to Real Estate 33 1/3%	TOTAL ASSESSED VALUE	Total Assessed Value as Reported by the Assessor			District No.	District Rate	District No.	District Rate	District No.	District Rate																District No.	District Rate	Tax including State Homestead	State Tax on Non-Homestead
											Homestead Up to \$4,000 20%	Over \$4,000 and Non-Homestead 33 1/3%		Homestead Up to \$4,000 25%	Over \$4,000 and Non-Homestead 40%																														
State of Minnesota		N E 1/4 of N E 1/4				36 139 20																																							
State of Minnesota		N W 1/4 of N E 1/4																																											
State of Minnesota		S W 1/4 of N E 1/4																																											
State of Minnesota		S E 1/4 of N E 1/4																																											
State of Minnesota		N E 1/4 of N W 1/4																																											
Harry F. + Helen Snodgrass		S W 1/4 of N W 1/4				45 80		70		F	395	475	870		290																														
State of Minnesota		S E 1/4 of N W 1/4																																											
Harry F. + Helen Snodgrass		N E 1/4 of S W 1/4				28 50		no		"	129		129		43																														
"		N W 1/4 of S W 1/4				40		no		"	366		366		122																														
Edward Kuethe		S W 1/4 of S W 1/4				40		no		"	236		236		77																														
State of Minnesota		S E 1/4 of S W 1/4								T			231		77																														
State of Minnesota		N E 1/4 of S E 1/4																																											
State of Minnesota		N W 1/4 of S E 1/4																																											
State of Minnesota		S W 1/4 of S E 1/4																																											
State of Minnesota		S E 1/4 of S E 1/4																																											
						154 30							475		596																														

Vertical text along the right edge: Woodland, Deshobies Beach, Reshoe Beach, Hurdy Bay, Saxe, Wildmere Beach.

Assessment Roll and Tax List of Real Property in the _____ of _____, _____, Minnesota, for Taxes for the Year 1958.

Form SCD BLUE-SIXE QUARTY, MINNAPL

* Indicate Type of Property: R-Residential, C-Commercial, I-Industrial, U-Utility, F-Farm, L-Lakeshore.

Table with columns: IN WHOSE NAME ASSESSED, TO WHOM TRANSFERRED, SUBDIVISION, TRUE AND FULL VALUATIONS, ASSESSED VALUATIONS. Includes fields for acreage, taxes, and property type.

PAGES

45

THRU

50

BLANK

Assessment Roll and Tax List of Real Property in the _____ of _____, _____, Minnesota, for Taxes for the Year 1958.

Table with columns: TOTAL TAXES, PAID, WHEN PAID, March Settlement, June Settlement, November Settlement, Delinquent Tax and Penalty. Includes sub-columns for cents and months.

Miller's Point, Woodland Parkshores Beach, Wagon Beach, Wildmore Beach

Assessment Roll and Tax List of Real Property in the Town of Powers, Cass County, Minnesota, for Taxes for the Year 1958.

Table with columns: IN WHOSE NAME ASSESSED, TO WHOM TRANSFERRED, DESCRIPTION OF PROPERTY, TRUE AND FULL VALUATIONS, ASSESSED VALUATIONS, VALUATIONS BY SCHOOL DISTRICTS AS EQUALIZED BY DEPARTMENT OF TALLATION, SOLD FOR TAXES, PAID, WHEN PAID, Number of Receipt, March Settlement 1959, June Settlement 1959, Penalty, November Settlement 1959, Penalty, Collections to First Monday in January 1960, Penalty, Delinquent on First Monday in January 1960, Total Delinquent Tax and Penalty, REMARKS.

Miller's Point

Woodland Parkettes Beach Reshoe Beach Lufroy Bay Swans Aldermere Beach

Assessment Roll and Tax List of Real Property in the Town of Powers

Cass County, Minnesota, for Taxes for the Year 1958.

Table with columns: IN WHOSE NAME ASSESSED, TO WHOM TRANSFERRED, SUBDIVISION, TRUE AND FULL VALUATIONS (LAND, BUILDINGS, MACHINERY, TOTAL), ASSESSED VALUATIONS (RURAL, ALL OTHER), VALUATIONS BY SCHOOL DISTRICTS AS EQUALIZED BY DEPARTMENT OF TAXATION, SOLD FOR TAXES, PAID, WHEN PAID, SPECIAL TAXES, TOTAL TAXES, PAID, WHEN PAID, Number of Receipt, March Settlement 1959, June Settlement 1959, Penalty, November Settlement 1959, Penalty, Collections to First Monday in January 1960, Penalty, Delinquent on First Monday in January 1960, Total Delinquent Tax and Penalty, REMARKS.

Point
Woodland

Point
Woodland
Hartland's Lake
St. Paul's Beach
Resnoe Beach
Lafayette Bay
Sussex
Wilmore Beach

Assessment Roll and Tax List of Real Property in the Town of Powers, Cass County, Minnesota, for Taxes for the Year 1958.

Cass County, Minnesota, for Taxes for the Year 1958.

Table with columns: IN WHOSE NAME ASSESSED, TO WHOM TRANSFERRED, DESCRIPTION OF PROPERTY, TRU AND FULL VALUATIONS, ASSESSED VALUATIONS, VALUATIONS BY SCHOOL DISTRICTS AS EQUALIZED BY DEPARTMENT OF TAXATION, SOLD FOR TAXES, PAID, WHEN PAID, SPECIAL TAXES, TOTAL TAXES, PAID, WHEN PAID, Number of Receipt, March Settlement 1959, June Settlement 1959, Penalty, November Settlement 1959, Penalty, Collections to First Monday in January 1960, Penalty, Delinquent on First Monday in January 1960, Total Delinquent Tax and Penalty, REMARKS.

Point
Woodland
Des Moines Beach

Point
Horseshoe Beach
Ludlow Bay
Susano
Wilderness Beach

Assessment Roll and Tax List of Real Property in the Town of Powers

Cass County, Minnesota, for Taxes for the Year 1958.

Form 30 Indicate Type of Property: R-Residential, C-Commercial, I-Industrial, U-Utility, F-Farm, L-Lakeshore, T-Timber, M-Mineral

Main table with columns: IN WHOSE NAME ASSESSED, TO WHOM TRANSFERRED, DESCRIPTION OF PROPERTY, TRUE AND FULL VALUATIONS, ASSESSED VALUATIONS, VALUATIONS BY SCHOOL DISTRICTS AS EQUALIZED BY DEPARTMENT OF TAXATION, SOLD FOR TAXES, PAID, WHEN PAID, Number of Receipt, March Settlement 1959, June Settlement 1959, November Settlement 1959, Penalty, Collections to First Monday in January 1960, Delinquent on First Monday in January 1960, Total Delinquent Tax and Penalty, REMARKS.

Point Mill Woodland Beach Des Moines Beach

Point Mill Woodland Beach Des Moines Beach

Freeman E. Smith
Freeman Smith
Gladys Coffland
John & Marie W. Spillane
Jessie B. & Mattie Thompson

Des Moines Beach
21
22
23
24
25
26
27

Table with columns: LAND Exclusive of Structures and Improvements, BUILDINGS and Other Structures, MACHINERY Permanently Attached to Real Estate, TOTAL True and Full Value, RURAL (Homestead Up to \$4,000 20%, Over \$4,000 and Non-Homestead 33 1/3%), ALL OTHER (Timber Land Class 3e 20%, Homestead Up to \$4,000 25%, Over \$4,000 and Non-Homestead 40%), MACHINERY Permanently Attached to Real Estate 33 1/3%, TOTAL ASSESSED VALUE, Total Assessed Value as Equalized by the Board of Review, FINAL EQUALIZED VALUE.

Table with columns: SOLD FOR TAXES, VALUATIONS BY SCHOOL DISTRICTS AS EQUALIZED BY DEPARTMENT OF TAXATION (District No., Rate, etc.), Tax Including State Homestead, State Tax on Non-Homestead, SPECIAL TAXES, TOTAL TAXES, PAID, WHEN PAID (Month, Day, Year), Number of Receipt, March Settlement 1959, June Settlement 1959, November Settlement 1959, Penalty, Collections to First Monday in January 1960, Delinquent on First Monday in January 1960, Total Delinquent Tax and Penalty, REMARKS.

4 3
236
239
5924 156
60 80

53 68
3 06

Point Mill Woodland Beach Des Moines Beach

Assessment Roll and Tax List of Real Property in the Town of Powers

Cass County, Minnesota, for Taxes for the Year 1958.

Indicate Type of Property: R-Residential, C-Commercial, I-Industrial, U-Utility, F-Farm, L-Lakeshore, T-Timber, M-Mineral

Main table with columns: IN WHOSE NAME ASSESSED, TO WHOM TRANSFERRED, SUBDIVISION, TRUE AND FULL VALUATIONS (RURAL, ALL OTHER, TOTAL ASSESSED VALUE), VALUATIONS BY SCHOOL DISTRICTS AS EQUALIZED BY DEPARTMENT OF TAXATION, SOLD FOR TAXES, PAID, WHEN PAID, Number of Receipt, March Settlement 1959, June Settlement 1959, November Settlement 1959, Collections to First Monday in January 1960, Delinquent on First Monday in January 1960, Total Delinquent Tax and Penalty, REMARKS.

Point, Woodland, Horseshoe Beach, Molines Beach

Shore, On Hardy Lake, Lake Shore, Eldo Shore, Safford Bay, Suan, Wildmere Beach

Assessment Roll and Tax List of Real Property in the Town of Powers, Cass County, Minnesota, for Taxes for the Year 1958.

Cass County, Minnesota, for Taxes for the Year 1958.

Indicate Type of Property: R-Residential, C-Commercial, I-Industrial, U-Utility, F-Farm, L-Lakeshore, T-Timber, M-Mineral

Table with columns: IN WHOSE NAME ASSESSED, TO WHOM TRANSFERRED, SUBDIVISION, DESCRIPTION OF PROPERTY, TRUE AND FULL VALUATIONS, ASSESSED VALUATIONS, VALUATIONS BY SCHOOL DISTRICTS AS EQUALIZED BY DEPARTMENT OF TAXATION, SOLD FOR TAXES, SPECIAL TAXES, TOTAL TAXES, PAID, WHEN PAID, Number of Receipt, March Settlement, June Settlement, Penalty, November Settlement, Collections to First Monday in January, Delinquent on First Monday in January, Total Delinquent Tax and Penalty, REMARKS.

Point, Woodland, Beach, Moines Beach, Horseshoe Beach, El Suano

Vino Shore, Headland's Lake Shore, Eldo Shores, Sunborn Heights Kin Hill, Wilderess Beach

Assessment Roll and Tax List of Real Property in the Town of Powers

* Indicate Type of Property: R-Residential, G-Commercial, I-Industrial, U-Utility, F-Form, L-Lakeshore, T-Timber, M-Mineral

Cass County, Minnesota, for Taxes for the Year 1958

Table with columns: IN WHOSE NAME ASSESSED, TO WHOM TRANSFERRED, DESCRIPTION OF PROPERTY, TRUE AND FULL VALUATIONS, ASSESSED VALUATIONS (RURAL, ALL OTHER), VALUATIONS BY SCHOOL DISTRICTS AS EQUALIZED BY DEPARTMENT OF TAXATION, TAXES (SPECIAL, TOTAL), PAID, WHEN PAID, etc.

* Indicate Type of Property: R-Residential, C-Commercial, I-Industrial, U-Utility, F-Farm, L-Lakeshore, T-Timber, M-Mineral

IN WHOSE NAME ASSESSED	TO WHOM TRANSFERRED	DESCRIPTION OF PROPERTY					TRUE AND FULL VALUATIONS													FINAL EQUALIZED VALUE								
		SUBDIVISION	Sec. of Lot	Town or Block	Reg.	Number of Acres of Land	LAND Exclusive of Structures and Improvements	BUILDINGS and Other Structures	MACHINERY Permanently Attached to Real Estate	TOTAL True and Full Value	RURAL		ALL OTHER				TOTAL ASSESSED VALUE	Total Assessed Value as Equalized by the Board of Review										
		Part of Sec 1 Sec 32-34-30	Acres	100ths	No. School District	Indicate Homestead Yes or No	Indicate Agricultural Yes or No	Indicate Type of Property	Homestead Up to \$4,000 20%	Over \$4,000 and Non-Homestead 33 1/3%	Timber Land Class 3a 20%	Homestead Up to \$4,000 25%	Over \$4,000 and Non-Homestead 40%	MACHINERY Permanently Attached to Real Estate 33 1/3%	Dollars	Dollars	Dollars	Dollars	Dollars	Dollars	Dollars	Dollars	Dollars	Dollars	Dollars	Dollars		
Floyd L. & Chesta W. Smith		Eldo Shores Part of Sec 1 Sec 32-34-30			114	No	No	L							60	126		186	62	20				62	71.8			
Forrest Shamhart						No	"	"							60			60	20				20	62				
Floyd L. & Chesta W. Smith						No	"	"							60			60	20				20	71.8 change				
Forrest Shamhart						No	"	"							39	99		138	49	13			46	46				
Alfred S. & Vera Gusterson						No	"	"							80	625		705	235				235	46				
Fred Steiner						No	"	"							61	500		561	187				187	46				
Claude & Mabel Wilkerson						No	"	"							60	1800		1860	620				620	46				
"						No	"	"							60			60	20				20	46				
									480	2925	3405	1135					425	1168.20	1210	1210	1210	1210						
									8024.00	3504	3030						425	1168.20	1210	1210	1210	1210						

SOLD FOR TAXES	VALUATIONS BY SCHOOL DISTRICTS AS EQUALIZED BY DEPARTMENT OF VALUATION						Tax including State Homestead	State Tax on Non-Homestead	SPECIAL TAXES	TOTAL TAXES	PAID	WHEN PAID	Number of Receipt	March Settlement 1959	June Settlement 1959	November Settlement 1959	Collections to First Monday in January 1960	Penalty	Delinquent on First Monday in January 1960	Total Delinquent Tax and Penalty	REMARKS																					
	District No. Rate Mills	District No. Rate Mills	District No. Rate Mills	District No. Rate Mills	District No. Rate Mills	District No. Rate Mills																\$ cts.	\$ cts.	\$ cts.	\$ cts.	\$ cts.	\$ cts.	\$ cts.	\$ cts.	\$ cts.	\$ cts.	\$ cts.	\$ cts.									
1																																										
2																																										
3																																										
4																																										
5																																										
6	SOLD FOR TAXES																																									
7																																										
8																																										
9																																										
10																																										
11																																										
12																																										
13																																										
14																																										
15																																										
16																																										
17																																										
18																																										
19																																										
20																																										

Point
 Lakeshore
 Lake
 El Supco
 El Supco
 Division

Point
 Lakeshore
 Lake
 El Supco
 El Supco
 Division

Assessment Roll and Tax List of Real Property in the Town of Powers

Cass County, Minnesota, for Taxes for the Year 1958.

Form 30-1-58 Indicate Type of Property: R-Residential, C-Commercial, I-Industrial, U-Utility, F-Farm, L-Lakeshore, T-Timber, M-Mineral

Table with columns: IN WHOSE NAME ASSESSED, TO WHOM TRANSFERRED, SUBDIVISION, TRUK AND FULL VALUATIONS, ASSESSED VALUATIONS, VALUATIONS BY SCHOOL DISTRICTS AS EQUALIZED BY DEPARTMENT OF TAXATION, TAXES, PAID, WHEN PAID, etc.

Point, Lakeshore, On Fairy Lake, Eldo Shores, Sanborn Heights, Wildmer Beach

Four Point, Echo Hill, Gillespie's Sub-Division

Assessment Roll and Tax List of Real Property in the Town of Powers

Indicate Type of Property: R-Residential, C-Commercial, I-Industrial, U-Utility, F-Farm, L-Lakeshore, T-Timber, M-Mineral

Cass County, Minnesota, for Taxes for the Year 1958.

Table with columns: IN WHOSE NAME ASSESSED, TO WHOM TRANSFERRED, SUBDIVISION, TRUE AND FULL VALUATIONS (RURAL, ALL OTHER), VALUATIONS BY SCHOOL DISTRICTS AS EQUALIZED BY DEPARTMENT OF TAXATION, SOLD FOR TAXES, PAID, WHEN PAID, SPECIAL TAXES, TOTAL TAXES, PAID, WHEN PAID, Number of Receipt, March Settlement 1959, June Settlement 1959, Penalty, November Settlement 1959, Penalty, Collections to First Monday in January 1960, Penalty, Delinquent on First Monday in January 1960, Total Delinquent Tax and Penalty, REMARKS.

Point, Lakeshore, On Fairy Lake, Eldo Shores, Emborn Heights, Echo Hill, Willow Beach

Four Point, Cass County, Minnesota, Division

Assessment Roll and Tax List of Real Property in the Town of Powers

Indicate Type of Property: R-Residential, C-Commercial, I-Industrial, U-Utility, F-Farm, L-Lakeshore, T-Timber, M-Mineral

Cass County, Minnesota, for Taxes for the Year 1958.

Table with columns: IN WHOSE NAME ASSESSED, TO WHOM TRANSFERRED, SUBDIVISION, TRUE AND FULL VALUATIONS, ASSESSED VALUATIONS, VALUATIONS BY SCHOOL DISTRICTS AS EQUALIZED BY DEPARTMENT OF TAXATION, SOLD FOR TAXES, SPECIAL TAXES, TOTAL TAXES, PAID, WHEN PAID, Number of Receipt, March Settlement 1959, June Settlement 1959, November Settlement 1959, Collections to First Monday in January 1960, Delinquent on First Monday in January 1960, Total Delinquent Tax and Penalty, REMARKS.

Vertical text on the left margin: Vincent's Four Point Shores, Eldo Shores, Subborn Heights, Echo Hill, Gallespie's Sub-Division

Vertical text on the right margin: PERSON

