

ASSESSMENT & TAX LIST - 1956

Powers



Assessor's Return of Exempt Real Property in the Town of Powers County of Cass Minnesota, for the Year 1956

NAMES OF OWNERS	DESCRIPTION	Sec. or Lot	Town or Block	Range	No. of Acres		FOR WHAT PURPOSE USED	TRUE AND FULL VALUATIONS				ASSESSED VALUATIONS		REMARKS
					Acres	100ths		LAND Exclusive of Structures and Improvements Dollars	BUILDINGS and Other Structures Dollars	MACHINERY Permanently Attached to Real Estate Dollars	TOTAL True and Full Value Dollars	Rural Including Machinery 33 1/3%	All Other 40%	
Northwestern Imps. Co	NW 1/4 of NW 1/4 (Ry Property)	5	139	30	40			399			399	133		4
State of Minnesota	W 815' of S 222.1' of NW 1/4 of SE 1/4	5	139	30				201			201	67		4
N.W. Imps. Co	NE 1/4 of SE 1/4 (Ry Property)	6	139	30				399			399	133		4
Village of Backus	S. 602' of E 188' of NW 1/4 of NW 1/4	29	139	30			Airport	78			78	26		4
Village of Backus	S. 602' of W 535.5' of NE 1/4 of NW 1/4	29	139	30			Airport	222	300		522	177		4
Village of Backus	Reg. at NE cor. of NE 1/4 of NW 1/4 of SE 1/4	32	139	30	5		Cemetery	101	100		201	67		4
Village of Backus	W 408.8' NW 531' (or 431') to N line, E 1/4 of NW 1/4 to N line of NW 1/4 NE 1/4 of SW 1/4	32	139	30				600			600	200		4

Real Estate

Hiller's Point  
Wild Woodland  
Heddeslaines Beach  
Lido  
Horseshoe Beach  
Peters Harbor Bay













Assessment Roll and Tax List of Real Property in the Town of Powers

Indicate Type of Property: R-Residential, C-Commercial, I-Industrial, U-Utility, F-Farm, L-Lakeshore, T-Timber, M-Mineral

Cass County, Minnesota, for Taxes for the Year 1956.

Table with columns: IN WHOSE NAME ASSESSED, TO WHOM TRANSFERRED, DESCRIPTION OF PROPERTY, TRUE AND FULL VALUATIONS, ASSESSED VALUATIONS, VALUATIONS BY SCHOOL DISTRICTS, TAXES, PAID, WHEN PAID, etc.

Point 171d Woodland La Des Moines Beach 171d Horseshoe Beach 171d Inlay Bay

Assessment Roll and Tax List of Real Property in the Town of Powers

\* Indicate Type of Property: R-Residential, C-Commercial, I-Industrial, U-Utility, F-Farm, L-Lakeshore, T-Timber, M-Mineral

Cass County, Minnesota, for Taxes for the Year 1956.

IN WHOSE NAME ASSESSED	TO WHOM TRANSFERRED	DESCRIPTION OF PROPERTY	Subdivision	Sec of Lot	Town or Block	Rdg	Number of Acres of Land	No. School District	Indicate if Agricultural or as per No.	Indicate if Mineral or as per No.	Indicate if Timber or as per No.	TRUE AND FULL VALUATIONS				ASSESSED VALUATIONS					Total Assessed Value as Equivalized by the Board of Review	FINAL EQUALIZED VALUE	SOLD FOR TAXES	VALUATIONS BY SCHOOL DISTRICTS AS EQUALIZED BY DEPARTMENT OF TAXATION						State Tax on Non-Homestead	SPECIAL TAXES	TOTAL TAXES	PAID	WHEN PAID	Number of Receipts	March Settlement 1957	June Settlement 1957	Penalty	November Settlement 1957	Penalty	Collections to First Monday in January 1958	Penalty	Delinquent on First Monday in January 1958	Total Delinquent Tax and Penalty	REMARKS								
												LAND Exclusive of Structures and Improvements	BUILDINGS and Other Structures	MACHINERY Permanently Attached to Real Estate	TOTAL True and Full Value	RURAL	ALL OTHER		MACHINERY Permanently Attached to Real Estate	TOTAL ASSESSED VALUE				District No.	District No.	District No.	District No.	District No.	District No.																	Rate	Rate	Rate	Rate	Rate	Rate	Rate	Rate
Krute G + Marie O L Anderson		NE 1/4 of NE 1/4		4	139	30	40	4	Yes			F	230				230	46																																			
Richard W + Ethel M Carder		SW 1/4 of NE 1/4					40						335	550		885	177																																				
		SE 1/4 of NE 1/4					40					T	160			160	32																																				
John + Dora Taylor		NE 1/4 of NW 1/4 less 492' of E 1/2 of E 1/4					32.66		Yes			F	345			345	69																																				
		SW 1/4 of NW 1/4					40					T	215			215	43																																				
		SW 1/4 of NW 1/4					40					"	<del>215</del> 250 T.R. change			<del>405</del> 405	81																																				
Sister E + Francis Scott		SE 1/4 of NW 1/4					40					F	300	515		815	163																																				
Ed. Freshner		NE 1/4 of SW 1/4					40		Yes			F	365			365	73																																				
Jay L + Sadie E. Arnold		SW 1/4 of SW 1/4					40					T	159			159	53																																				
Ralph Paul + Joyce E. Bundy		SW 1/4 of SW 1/4					40		Yes			"	155			155	31																																				
Richard W + Ethel M Carder		NE 1/4 of SE 1/4					40		Yes			T	240			240	48																																				
		NW 1/4 of SE 1/4					40					"	240			240	48																																				
		SW 1/4 of SE 1/4 less W. 24' s.d.										"	220			220	44																																				
		SE 1/4 of SE 1/4 less 8 ac. in S.E. Cor.					32					"	185			185	37																																				
Ralph R Bundy		SW 1/4 of SE 1/4					8		Yes			R	95	100		195	39																																				
							59.160						420.9	21.4		644.7	110	299																																			
													405.2			609.2	107.9																																				

Point of View  
Woodland  
Deerlakes Beach  
Lido  
Horseshoe Beach  
Lullay Bay

Assessment Roll and Tax List of Real Property in the Town of Powers, Cass County, Minnesota, for Taxes for the Year 1956.

Table with columns for IN WHOSE NAME ASSESSED, TO WHOM TRANSFERRED, DESCRIPTION OF PROPERTY, TRUE AND FULL VALUATIONS, ASSESSED VALUATIONS, VALUATIONS BY SCHOOL DISTRICTS, SPECIAL TAXES, TOTAL TAXES, PAID, WHEN PAID, and REMARKS. Includes handwritten entries for various property owners like James J. & Lois C. McCarty, John M. & Evelyn V. Rohr, and Geo. F. Kahl.

Point, Wild, Woodland, Des Moines Beach, Horseshoe Beach, Ind. Bay



Assessment Roll and Tax List of Real Property in the Town of Powers

Cass County, Minnesota, for Taxes for the Year 1956.

Table with columns: IN WHOSE NAME ASSESSED, TO WHOM TRANSFERRED, DESCRIPTION OF PROPERTY, TRUE AND FULL VALUATIONS, ASSESSED VALUATIONS, VALUATIONS BY SCHOOL DISTRICTS AS EQUALIZED BY DEPARTMENT OF TALENTION, SOLD FOR TAXES, PAID, WHEN PAID, Number of Receipt, March Settlement 1957, June Settlement 1957, November Settlement 1957, Penalty, Collections to First Monday in January 1958, Delinquent on First Monday in January 1958, Total Delinquent Tax and Penalty, REMARKS.

Assessment Roll and Tax List of Real Property in the Town of Cass of Cass County, Minnesota

Cass County, Minnesota, for Taxes for the Year 1956.

Form 502 (56) MINN. STAT. COMP. SER. 1955

\* Indicate Type of Property: R-Residential, C-Commercial, I-Industrial, U-Utility, F-Farm, L-Lakeshore, T-Timber, M-Mineral

IN WHOSE NAME ASSESSED	TO WHOM TRANSFERRED	DESCRIPTION OF PROPERTY				TRUE AND FULL VALUATIONS												SOLD FOR TAXES	VALUATIONS BY SCHOOL DISTRICTS AS EQUALIZED BY DEPARTMENT OF TAXATION						SPECIAL TAXES	TOTAL TAXES	PAID	WHEN PAID	Number of Receipt	March Settlement 1957	June Settlement 1957	November Settlement 1957	Penalty	Collections to First Monday in January 1958	Penalty	Delinquent on First Monday in January 1958	Total Delinquent Tax and Penalty	REMARKS	
		SUBDIVISION	Sec. of Lot	Town or Block	Rsq.	Number of Acres of Land	LAND Exclusive of Structures and Improvements	BUILDINGS and Other Structures	MACHINERY Permanently Attached to Real Estate	TOTAL True and Full Value	RURAL	ALL OTHER	MACHINERY Permanently Attached to Real Estate	TOTAL ASSESSED VALUE	Valued Equalized by Board of Review	FINAL EQUALIZED VALUE	District No.		District No.	District No.	District No.	District No.	Tax including State Homestead	State Tax on Non-Homestead															March Settlement 1957
M.P. & John C. & Florence Dumont	M.P. & John C. & Florence Dumont	NE 1/4 of NE 1/4	39	30	70	30.5			30.5	61			61																										
State of Minnesota	State of Minnesota	NW 1/4 of NE 1/4																																					
State of Minnesota	State of Minnesota	SW 1/4 of NE 1/4																																					
State of Minnesota	State of Minnesota	SE 1/4 of NE 1/4																																					
Marygrove P. Dumont	Marygrove P. Dumont	NE 1/4 of NW 1/4			30				70	14			14																										
State of Minnesota	State of Minnesota	NW 1/4 of NW 1/4																																					
Walter & Delores Karkula	Walter & Delores Karkula	SW 1/4 of NW 1/4			33				198	66			66																										
Marygrove P. Dumont	Marygrove P. Dumont	SE 1/4 of NW 1/4			40				140	28			28																										
Duane E. & Edith Enger	Walter Myers	NE 1/4 of SW 1/4			40				258	86			86																										
Walter Myers	Walter Myers	NW 1/4 of SW 1/4			32.85				288	96			96																										
Lila S. & Moses J. Joffke	Lila S. & Moses J. Joffke	SW 1/4 of SW 1/4			40				320	64			64																										
Duane E. & Edith Enger	Sigrid Ash	SE 1/4 of SW 1/4			40				150	39.5			52.5	10.5																									
Sigrid Ash	W.W. Paper	NE 1/4 of SE 1/4			10				81	27			27																										
W.W. Paper	State of Minnesota	NE 1/4 of SE 1/4			40				303	101			101																										
State of Minnesota	State of Minnesota	NW 1/4 of SE 1/4			40				303	101			101																										
Adella Pensore	Adella Pensore	SW 1/4 of SE 1/4			40				303	101			101																										
Walter Myers	Walter Myers	SE 1/4 of SE 1/4			40				326	112			112																										
Walter Myers	Walter Myers	E. 1/2 of SW 1/4 of SW 1/4			30				30	10			10																										

Porter Wilder  
Woodland  
The Des Moines Beach  
Ido Horseshoe Beach  
Ido Bay

Assessment Roll and Tax List of Real Property in the Town of Powers

Indicate Type of Property: R-Residential, C-Commercial, I-Industrial, U-Utility, F-Farm, L-Lakeshore, T-Timber, M-Mineral

Cass County, Minnesota, for Taxes for the Year 1956.

Main table with columns: IN WHOSE NAME ASSESSED, TO WHOM TRANSFERRED, DESCRIPTION OF PROPERTY, TRUE AND FULL VALUATIONS, ASSESSED VALUATIONS (RURAL, ALL OTHER), VALUATIONS BY SCHOOL DISTRICTS AS EQUALIZED BY DEPARTMENT OF TAXATION, and various tax columns (SPECIAL TAXES, TOTAL TAXES, PAID, WHEN PAID, etc.).

Ralph P. Bundy
State of Minnesota
Otto Kaste
Chester C. & Agnes M. Cursey
Wm. H. Kalaton
Williams Russell
Wm. F. Russell
Wm. & Lila Russell
W. Lee Mack
Arvid & Lorraine Anderson
William & Norma Lee Owen, undivided
William R. & Sadie L. Reeves, undivided
State of Minnesota

1182 1300 Pd. D. R. 29868
1204 1204 Pd. D. R. 29868

PAID IN FULL MAY 31 1957 11516
PAID IN FULL MAY 31 1957 11517
PAID IN FULL JUL 1 2 1957 12941
PAID IN FULL JUL 1 2 1957
PAID IN FULL MAY 31 1957 11515
PAID IN FULL MAY 31 1957
PAID IN FULL MAY 31 1957 11518

109 71 72 63 3590

Vertical text on the right edge: Fortn... Woodland... Des Moines Beach... Horseshoe Beach... Larry Bay

Assessment Roll and Tax List of Real Property in the Town of Powers

Cass County, Minnesota, for Taxes for the Year 1956.

Indicate Type of Property: R-Residential, C-Commercial, I-Industrial, U-Utility, F-Farm, L-Lakeshore, T-Timber, M-Mineral

Table with columns: IN WHOSE NAME ASSESSED, TO WHOM TRANSFERRED, DESCRIPTION OF PROPERTY, TRUE AND FULL VALUATIONS, ASSESSED VALUATIONS, VALUATIONS BY SCHOOL DISTRICTS AS EQUALIZED BY DEPARTMENT OF TAXATION, TAXES, PAID, WHEN PAID, Number of Receipt, March Settlement 1957, June Settlement 1957, Penalty, November Settlement 1957, Penalty, Collections to First Monday in January 1958, Delinquent on First Monday in January 1958, Total Delinquent Tax and Penalty, REMARKS.



Assessment Roll and Tax List of Real Property in the Town of Powers

Indicate Type of Property: R-Residential, C-Commercial, I-Industrial, U-Utility, F-Farm, L-Lakeshore, T-Timber, M-Mineral

Cass County, Minnesota, for Taxes for the Year 1956.

Table with columns for IN WHOSE NAME ASSESSED, TO WHOM TRANSFERRED, DESCRIPTION OF PROPERTY, TRUE AND FULL VALUATIONS, ASSESSED VALUATIONS, VALUATIONS BY SCHOOL DISTRICTS AS EQUALIZED BY DEPARTMENT OF TAXATION, and REMARKS. Includes handwritten entries for various property owners like Paul J. & Mary J. Eklund and Wendell M. & Louise Berger.



Assessment Roll and Tax List of Real Property in the Town of Powers of Powers

Cass County, Minnesota, for Taxes for the Year 1956.

Form 5012 (5-56) ... Indicate Type of Property: R-Residential, C-Commercial, I-Industrial, U-Utility, F-Farm, L-Lakeshore, T-Timber, M-Mineral

Main table with columns: IN WHOSE NAME ASSESSED, TO WHOM TRANSFERRED, DESCRIPTION OF PROPERTY, TRUE AND FULL VALUATIONS, ASSESSED VALUATIONS, VALUATIONS BY SCHOOL DISTRICTS AS EQUALIZED BY DEPARTMENT OF TAXATION, SOLD FOR TAXES, PAID, WHEN PAID, etc.

Point View, Woodland, Des Moines Beach, Horseshoe Beach, Ludo Bay

Assessment Roll and Tax List of Real Property in the Town of Powers of Powers

Cass County, Minnesota, for Taxes for the Year 1956

Form 30 (1956) MINN. STATE DEPT. OF TAXATION
Indicate Type of Property: R-Residential, C-Commercial, I-Industrial, U-Utility, F-Farm, L-Lakeshore, T-Timber, M-Mineral

Table with columns: IN WHOSE NAME ASSESSED, TO WHOM TRANSFERRED, DESCRIPTION OF PROPERTY, TRUE AND FULL VALUATIONS, ASSESSED VALUATIONS, and FINAL EQUALIZED VALUE.

Table with columns: VALUATIONS BY SCHOOL DISTRICTS AS EQUALIZED BY DEPARTMENT OF TAXATION, SOLD FOR TAXES, TAX INCLUDING STATE HOMESTEAD, SPECIAL TAXES, TOTAL TAXES, PAID, WHEN PAID, Number of Receipts, March Settlement 1957, June Settlement 1957, November Settlement 1957, Penalty, Collections to First Monday in January 1958, Penalty, Delinquent on First Monday in January 1958, Penalty, Total Delinquent Tax and Penalty, and REMARKS.



Assessment Roll and Tax List of Real Property in the Town of Powers

Cass County, Minnesota, for Taxes for the Year 1956.

IN WHOSE NAME ASSESSED		TO WHOM TRANSFERRED		DESCRIPTION OF PROPERTY						TRUE AND FULL VALUATIONS						ASSESSED VALUATIONS										SOLD FOR TAXES	VALUATIONS BY SCHOOL DISTRICTS AS EQUALIZED BY DEPARTMENT OF TAXATION						Tax Including State Homestead	State Tax on Non-Homestead	SPECIAL TAXES	TOTAL TAXES		PAID		WHEN PAID		Number of Receipt	March Settlement 1957	June Settlement 1957	Penalty	November Settlement 1957	Penalty	Collections to First Monday in January 1958	Penalty	Delinquent on First Monday in January 1956	Total Delinquent Tax and Penalty	REMARKS
				SUBDIVISION		Number of Acres of Land		No. School District	Indicate here the No.	Indicate here the No.	Indicate here the No.	Indicate here the No.	LAND EXCLUSIVE OF STRUCTURES AND IMPROVEMENTS	BUILDINGS AND OTHER STRUCTURES	MACHINERY PERMANENTLY ATTACHED TO REAL ESTATE	TOTAL True and Full Value	RURAL		ALL OTHER			MACHINERY Permanently Attached to Real Estate	TOTAL ASSESSED VALUE	Total Assessed Value as Equalized by the Board of Review	FINAL EQUALIZED VALUE		District No. Rate		District No. Rate		District No. Rate		District No. Rate																			
A. J. Roberts & R. L. Sharpe				NE 1/4 of NE 1/4		15.13430 40		30	70	40	T	240				240	80					80				District No. Rate		District No. Rate		District No. Rate		District No. Rate																				
State of Minnesota				NW 1/4 of NE 1/4 Lot 2		3870		4	"	"	"	234				234	78					78				District No. Rate		District No. Rate		District No. Rate		District No. Rate																				
State of Minnesota				SW 1/4 of NE 1/4																						District No. Rate		District No. Rate		District No. Rate		District No. Rate																				
State of Minnesota				SE 1/4 of NE 1/4																						District No. Rate		District No. Rate		District No. Rate		District No. Rate																				
William Curney				NE 1/4 of NW 1/4 Lot 3		2520		40	"	"	"	201				201	67					67				District No. Rate		District No. Rate		District No. Rate		District No. Rate																				
Roy & Gertrude Curney				NW 1/4 of NW 1/4 Lot 4		2170		"	"	"	"	177				177	59					59				District No. Rate		District No. Rate		District No. Rate		District No. Rate																				
State of Minnesota				SW 1/4 of NW 1/4																						District No. Rate		District No. Rate		District No. Rate		District No. Rate																				
State of Minnesota				SE 1/4 of NW 1/4																						District No. Rate		District No. Rate		District No. Rate		District No. Rate																				
Paul S. Bily				NE 1/4 of SW 1/4 Lot 4		1150		"	"	"	"	129				129	43					43				District No. Rate		District No. Rate		District No. Rate		District No. Rate																				
State of Minnesota				NW 1/4 of SW 1/4 Lot 6		2860		"	"	"	"	285				285	95					95				District No. Rate		District No. Rate		District No. Rate		District No. Rate																				
State of Minnesota				SW 1/4 of SW 1/4 Lot 7		3970		"	"	"	"	240				240	80					80				District No. Rate		District No. Rate		District No. Rate		District No. Rate																				
State of Minnesota				SE 1/4 of SW 1/4		40		"	"	"	"	240				240	80					80				District No. Rate		District No. Rate		District No. Rate		District No. Rate																				
State of Minnesota				NE 1/4 of SE 1/4																						District No. Rate		District No. Rate		District No. Rate		District No. Rate																				
State of Minnesota				NW 1/4 of SE 1/4																						District No. Rate		District No. Rate		District No. Rate		District No. Rate																				
State of Minnesota				SW 1/4 of SE 1/4																						District No. Rate		District No. Rate		District No. Rate		District No. Rate																				
Arthur Benck				SE 1/4 of SE 1/4 Lot 1		3950		"	"	"	"	240				240	80					80				District No. Rate		District No. Rate		District No. Rate		District No. Rate																				
						29190							1926				1926	662					662				District No. Rate		District No. Rate		District No. Rate		District No. Rate																			

Pointe du Lac, Woodland, Des Moines Beach, Lido, Horseshoe Beach, July Bay

Main data table with columns: IN WHOSE NAME ASSESSED, TO WHOM TRANSFERRED, DESCRIPTION OF PROPERTY, TRUE AND FULL VALUATIONS, ASSESSED VALUATIONS, VALUATIONS BY SCHOOL DISTRICTS AS EQUALIZED BY DEPARTMENT OF TAXATION, TAX, SPECIAL TAXES, TOTAL TAXES, PAID, WHEN PAID, Number of Receipt, March Settlement 1957, June Settlement 1957, Penalty, November Settlement 1957, Penalty, Collections to First Monday in January 1958, Penalty, Delinquent on First Monday in January 1958, Total Delinquent Tax and Penalty, REMARKS. Includes handwritten entries and calculations.

221.77  
5.52  
219.11

Form SCFD (56) MINN. REV. STAT. ANN. SEC. 273.02  
\* Indicate Type of Property: R-Residential, C-Commercial, I-Industrial, U-Utility, F-Farm, L-Lakeshore, T-Thrber, M-Mineral

Point Wildwood  
Hoardland  
The Deskoiners Beach  
770 Horseshoe Beach  
Highway Bay

Assessment Roll and Tax List of Real Property in the Town of Powers, Cass County, Minnesota

Cass County, Minnesota, for Taxes for the Year 1956

Form 302 (1-56) Indicate Type of Property: R-Residential, C-Commercial, I-Industrial, U-Utility, F-Farm, L-Lakeshore, T-Timber, M-Mineral

Main table with columns: IN WHOSE NAME ASSESSED, TO WHOM TRANSFERRED, DESCRIPTION OF PROPERTY, TRUE AND FULL VALUATIONS, ASSESSED VALUATIONS, VALUATIONS BY SCHOOL DISTRICTS AS EQUALIZED BY DEPARTMENT OF TAXATION, TAXES, PAID, WHEN PAID, etc.

Handwritten entries in the 'IN WHOSE NAME ASSESSED' and 'TO WHOM TRANSFERRED' columns, including names like Carl Smith, Henry Husmann, Blanche Zaffke, etc.

Handwritten calculations at the bottom of the table: 599 + 33 = 632, 111 = 710, 67 = 299, 178 = 1109, 20648, 4392, 25040, 214, 25254.

Vertical text on the right edge of the page: Point, Woodland, Des Moines Beach, Horsehoe Beach, July Bay.





Assessment Roll and Tax List of Real Property in the Town of Powers

Indicate Type of Property: R-Residential, C-Commercial, I-Industrial, U-Utility, F-Farm, L-Lakeshore, T-Timber, M-Mineral

Cass County, Minnesota, for Taxes for the Year 1956.

Table with columns: IN WHOSE NAME ASSESSED, TO WHOM TRANSFERRED, DESCRIPTION OF PROPERTY, TRUE AND FULL VALUATIONS, ASSESSED VALUATIONS, VALUATIONS BY SCHOOL DISTRICTS AS EQUALIZED BY DEPARTMENT OF TAXATION, SOLD FOR TAXES, PAID, WHEN PAID, Number of Receipt, March Settlement 1957, June Settlement 1957, Penalty, November Settlement 1957, Penalty, Collections to First Monday in January 1958, Delinquent on First Monday in January 1958, Total Delinquent Tax and Penalty, REMARKS.

Jean Mc Howell

Jean Mc Howell

C. L. Curry

Jean Mc Howell

C. L. Curry

Jean Mc Howell

Point, Woodland, Lakeshore Beach, Horsehoe Beach, Ludo, Huron Bay



Assessment Roll and Tax List of Real Property in the Town of Powers, Cass County, Minnesota, for Taxes for the Year 1956.

Cass County, Minnesota, for Taxes for the Year 1956.

Table with columns: WHOSE NAME ASSESSED, TO WHOM TRANSFERRED, DESCRIPTION OF PROPERTY, TRUE AND FULL VALUATIONS, ASSESSED VALUATIONS, VALUATIONS BY SCHOOL DISTRICTS AS EQUALIZED BY DEPARTMENT OF TAXATION, TAXES, PAID, WHEN PAID, March Settlement 1957, June Settlement 1957, November Settlement 1957, Collections to First Monday in January 1958, Delinquent on First Monday in January 1958, Total Delinquent Tax and Penalty, REMARKS.

Assessment Roll and Tax List of Real Property in the Town of Powers

Cass County, Minnesota, for Taxes for the Year 1956

Indicate Type of Property: R-Residential, C-Commercial, I-Industrial, U-Utility, F-Farm, L-Lakeshore, T-Timber, M-Mineral

Table with columns: IN WHOSE NAME ASSESSED, TO WHOM TRANSFERRED, DESCRIPTION OF PROPERTY, TRUE AND FULL VALUATIONS, ASSESSED VALUATIONS, VALUATIONS BY SCHOOL DISTRICTS AS EQUALIZED BY DEPARTMENT OF TAXATION, TAXES, PAID, WHEN PAID, SPECIAL TAXES, TOTAL TAXES, PAID, WHEN PAID, Number of Receipt, March Settlement 1957, June Settlement 1957, November Settlement 1957, Collections to First Monday in January 1958, Delinquent on First Monday in January 1958, Total Delinquent Tax and Penalty, REMARKS.





Indicate Type of Property: R-Residential, C-Commercial, I-Industrial, U-Utility, F-Farm, L-Lakeshore, T-Timber, M-Mineral

Table with columns: IN WHOSE NAME ASSESSED, TO WHOM TRANSFERRED, DESCRIPTION OF PROPERTY, TRUE AND FULL VALUATIONS, ASSESSED VALUATIONS, VALUATIONS BY SCHOOL DISTRICTS AS EQUALIZED BY DEPARTMENT OF TAXATION, TAXES, PAID, WHEN PAID, Number of Receipts, March Settlement 1957, June Settlement 1957, November Settlement 1957, Penalties, Delinquent on First Monday in January 1958, Total Delinquent Tax and Penalty, REMARKS.

Handwritten entries in the 'IN WHOSE NAME ASSESSED' and 'TO WHOM TRANSFERRED' columns, including names like 'Clyde H. Quinn', 'Thomas H. Quinn', 'Melva E. Hightaker', 'Dora U. & Robert K. Rollins', 'Lyle Thomas', 'Frank Peplitch', 'A. Leslie & Douglas S. Smith', 'Carl H. & Laura A. Grant', 'Alta A. Sell', 'Hans E. & Holly B. Anderson', 'William H. & Martha Schneider', 'Peter & Anna Kuhns', 'Anthony H. & Helen Schneider', 'A. Leslie Smith', 'Agnes Schultzy'.

Handwritten summary at the bottom left: 18 13, 672, 2677, 3349, 134, 893, 1027.

Handwritten summary at the bottom right: 71, 134 = 134 R - 1574, 802 = 893 712, 23588, 476, 25638, 18537, 148, 90, 6863.

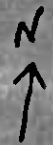
Vertical text on the right edge of the page: Point, Waldwoodland, Pasomans Beach, Idoro Shorehoe Beach, Lufor Bay.



LOT 2

1200'

LOT 3



Grant Sub 4  
23-139-30  
21.65 acs.

LAKE

SMITH

STARN

LIPKA

cont. 6

Haight-  
Stoc

Rollin

BRANN

3rd

618'

569'

Road 100'

200'

300'

400'

500'

600'

700'

200'

1000'

1100'

1200'

1300'

1320'

131.8'

287.8'

337.8'

487.8'

587.8'

637.8'

737.8'

857.8'

987.8'

SMITH

LIPKA

100'

500'







Assessment Roll and Tax List of Real Property in the Town of Powers

Cass County, Minnesota, for Taxes for the Year 1956.

Table with columns: IN WHOSE NAME ASSESSED, TO WHOM TRANSFERRED, DESCRIPTION OF PROPERTY, TRUE AND FULL VALUATIONS, ASSESSED VALUATIONS, VALUATIONS BY SCHOOL DISTRICTS AS EQUALIZED BY DEPARTMENT OF TAXATION, PAID, WHEN PAID, Number of Receipt, March Settlement 1957, June Settlement 1957, Penalty, November Settlement 1957, Penalty, Collections to First Monday in January 1958, Penalty, Delinquent on First Monday in January 1958, Total Delinquent Tax and Penalty, REMARKS.

Assessment Roll and Tax List of Real Property in the Town of Lowell of Polk County, Minnesota

Cass County, Minnesota, for Taxes for the Year 1956.

Form SCD (56) - 6-15-55

Indicate Type of Property: R-Residential, C-Commercial, I-Industrial, U-Utility, F-Farm, L-Lakeshore, T-Timber, M-Mineral

Table with columns: IN WHOSE NAME ASSESSED, TO WHOM TRANSFERRED, DESCRIPTION OF PROPERTY, TRUE AND FULL VALUATIONS, ASSESSED VALUATIONS, VALUATIONS BY SCHOOL DISTRICTS AS EQUALIZED BY DEPARTMENT OF TAXATION, SOLD FOR TAXES, PAID, WHEN PAID, SPECIAL TAXES, TOTAL TAXES, MARCH SETTLEMENT 1957, JUNE SETTLEMENT 1957, PENALTY, NOVEMBER SETTLEMENT 1957, COLLECTIONS TO FIRST MONDAY IN JANUARY 1958, PENALTY, DELINQUENT ON FIRST MONDAY IN JANUARY 1958, TOTAL DELINQUENT TAX AND PENALTY, REMARKS.



Assessment Roll and Tax List of Real Property in the Town of Powers

Indicate Type of Property: R-Residential, C-Commercial, I-Industrial, U-Utility, F-Farm, L-Lakeshore, T-Timber, M-Mineral

Cass County, Minnesota, for Taxes for the Year 1956.

Table with columns: IN WHOSE NAME ASSESSED, TO WHOM TRANSFERRED, DESCRIPTION OF PROPERTY, TRUE AND FULL VALUATIONS, VALUATIONS BY SCHOOL DISTRICTS AS EQUALIZED BY DEPARTMENT OF TAXATION, TAXES, PAID, WHEN PAID, etc.

Point of view: Woodland, Des Moines Beach, Horseshoe Beach, Luray Bay







Assessment Roll and Tax List of Real Property in the Town of Powers

\* Indicate Type of Property: R-Residential, C-Commercial, I-Industrial, U-Utility, F-Farm, L-Lakeshore, T-Timber, M-Mineral

Table with columns: IN WHOSE NAME ASSESSED, TO WHOM TRANSFERRED, DESCRIPTION OF PROPERTY, TRUE AND FULL VALUATIONS, ASSESSED VALUATIONS, FINAL EQUALIZED VALUE.

Cass County, Minnesota, for Taxes for the Year 1956.

Table with columns: SOLD FOR TAXES, VALUATIONS BY SCHOOL DISTRICTS AS EQUALIZED BY DEPARTMENT OF TAXATION, TAX INCLUDING STATE HOMESTEAD, SPECIAL TAXES, TOTAL TAXES, PAID, WHEN PAID, Number of Receipt, March Settlement 1957, June Settlement 1957, November Settlement 1957, Penalty, Collections to First Monday in January 1958, Delinquent on First Monday in January 1958, Total Delinquent Tax and Penalty, REMARKS.

Point, Wildwood, Lakeshore Beach, Horseshoe Beach, Roy Bay

Assessment Roll and Tax List of Real Property in the Town of Powers

\* Indicate Type of Property: R-Residential, C-Commercial, I-Industrial, U-Utility, F-Farm, L-Lake Shore, T-Timber, M-Mineral

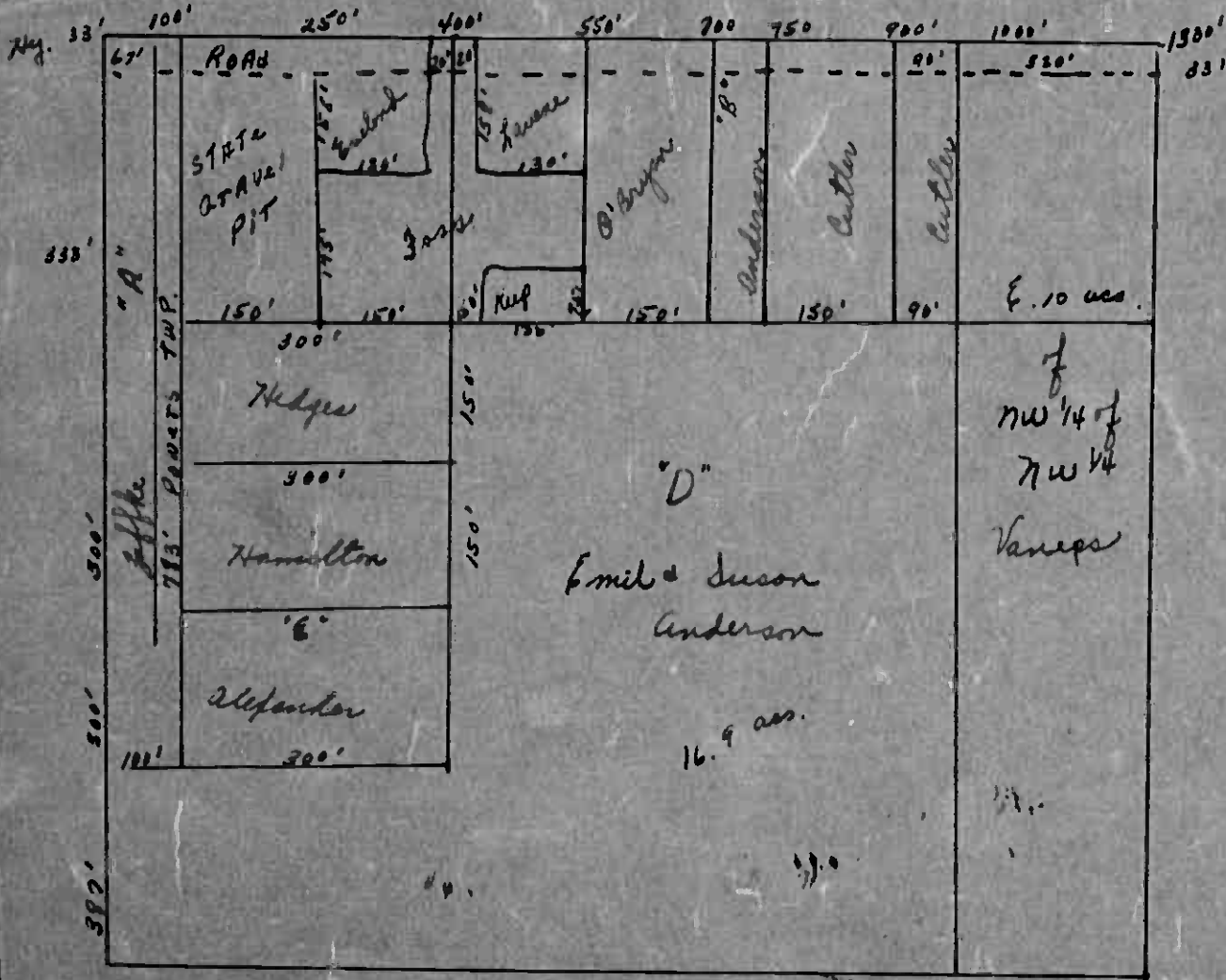
Cass County, Minnesota, for Taxes for the Year 1956.

IN WHOSE NAME ASSESSED	TO WHOM TRANSFERRED	DESCRIPTION OF PROPERTY				No. School District	Indicate Improved or No	Indicate Agricultural Yes or No	Indicate Type of Property	TRUE AND FULL VALUATIONS								FINAL EQUALIZED VALUE	SOLD FOR TAXES	VALUATIONS BY SCHOOL DISTRICTS AS EQUALIZED BY DEPARTMENT OF TAXATION						Tax Including State Homestead	State Tax on Non-Homestead	SPECIAL TAXES	TOTAL TAXES	PAID	WHEN PAID	Number of Receipts	March Settlement 1957	July Settlement 1957	Penalty	November Settlement 1957	Penalty	Collections to First Monday in January 1958	Penalty	Delinquent on First Monday in January 1958	Total Delinquent Tax and Penalty	REMARKS										
		SUBDIVISION	Sec. of Lot	Town or Block	Rng.					Number of Acres of Land	LAND Exclusive of Structures and Improvements	BUILDINGS and Other Structures	MACHINERY Permanently Attached to Real Estate	TOTAL True and Full Value	RURAL					MACHINERY Permanently Attached to Real Estate 33 1/3%	TOTAL ASSESSED VALUE	Total Assessed Value as Equalized by the Board of Review	District No.	District No.	District No.																		District No.									
															Homestead Up to \$4,000 20%	Over \$4,000 and Non-Homestead 33 1/3%	Timber Land Class 1e 20%																											ALL OTHER Homestead Up to \$4,000 25%	Over \$4,000 and Non-Homestead 40%	Rate	Rate	Rate	Rate			
		Dollars	Dollars	Dollars	Dollars					Dollars	Dollars	Dollars	Dollars	Dollars	Dollars	Dollars	Dollars			Dollars	Dollars	Dollars	Dollars	Dollars	Dollars																		Dollars	Dollars	Dollars	Dollars	Dollars	Dollars	Dollars	Dollars	Dollars	Dollars
Elmer & Ada Datz		NE 1/4 of NE 1/4	32	139	30	40	30	40	F				340									68																														
Maple Willhoit		NW 1/4 of NE 1/4	32	139	30	40			F				570									114																														
		SW 1/4 of NE 1/4	32	139	30	40			F				410	975								277																														
Elmer & Ada Datz		SE 1/4 of NE 1/4	32	139	30	40			F				175	500								1251	135	192																												
Minnesota Power & Light		50' x 150' NW 1/4 of NE 1/4	32	139	30	40			C				20	550	4350							4920		190																												
Frances W. & Gladys S. Vaneps		NE 1/4 of NW 1/4	32	139	30	40			F				270	280								550	110																													
		NW 1/4 of NW 1/4	32	139	30	40			F				270									550	110																													
Lealie & Gladys Sawyer		SW 1/4 of NW 1/4	32	139	30	40			F				320									320	64																													
		SE 1/4 of NW 1/4	32	139	30	40			F				375									375	75																													
Backus Engineering Consulting Assoc.		SE 1/4 of NW 1/4	32	139	30	40			F				375									375	75																													
Village of Backus		NE 1/4 of SW 1/4	32	139	30	40			F				370									370	74																													
James J. & Elsie R. Lada		NW 1/4 of SW 1/4	32	139	30	40			F				370									370	74																													
		SW 1/4 of SW 1/4	32	139	30	40			F				550									550	110																													
Margaret Lucille Thompson		SE 1/4 of SW 1/4	32	139	30	40			T				196	575								771	257																													
Andrew H. & Velma E. Anderson		NE 1/4 of SE 1/4	32	139	30	40			F				195	150								345	115																													
		NW 1/4 of SE 1/4	32	139	30	40			F				195									345	115																													
Kustaa A. & Rhoda E. Lehto		SW 1/4 of SE 1/4	32	139	30	40			F				255									255	85																													
		SE 1/4 of SE 1/4	32	139	30	40			F				108									108	36																													
Harold & Irma Datz		76 ac. of Lot 1	32	139	30	40			F				66								66	22																														
			32	139	30	40			F				4154	3600	4350							15110	1027	875																												

and Assessment omitted Property 11/15/57

5.00 Added  
5.00

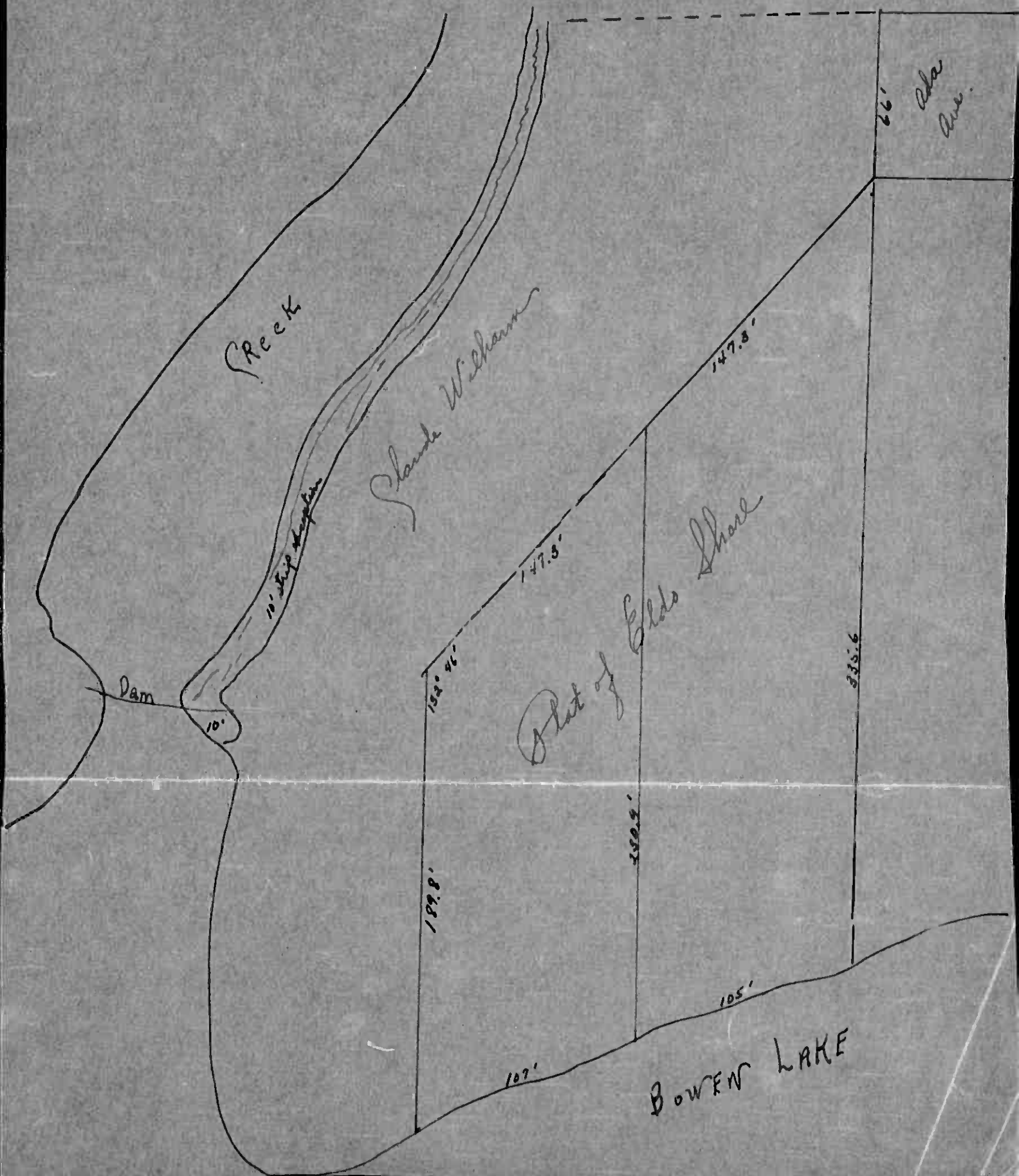




NW 1/4 - NW 1/4  
 32-139-30



PART OF LOT 1 - 32-189-30





Assessment Roll and Tax List of Real Property in the Town of Powers of Cass County, Minnesota

Cass County, Minnesota, for Taxes for the Year 1956.

Table with columns: IN WHOSE NAME ASSESSED, TO WHOM TRANSFERRED, DESCRIPTION OF PROPERTY, TRUE AND FULL VALUATIONS, ASSESSED VALUATIONS, VALUATIONS BY SCHOOL DISTRICTS AS EQUALIZED BY DEPARTMENT OF TAXATION, SOLD FOR TAXES, SPECIAL TAXES, TOTAL TAXES, PAID, WHEN PAID, Number of Receipt, March Settlement 1957, June Settlement 1957, Penalty, November Settlement 1957, Penalty, Collections to First Monday in January 1958, Delinquent on First Monday in January 1958, Total Delinquent Tax and Penalty, REMARKS.

























Assessment Roll and Tax List of Real Property in the Town of Powers

Indicate Type of Property: R-Residential, C-Commercial, I-Industrial, U-Utility, F-Farm, E-Lakeshore, T-Timber, M-Mineral

Cass County, Minnesota, for Taxes for the Year 1956.

El Sueno, Woodland, Deshaines Beach, Horseshoe Beach, Luboy Bay

Table with columns: IN WHOSE NAME ASSESSED, TO WHOM TRANSFERRED, SUBDIVISION, DESCRIPTION OF PROPERTY, TRUE AND FULL VALUATIONS, ASSESSED VALUATIONS, and FINAL EQUALIZED VALUE.

Table with columns: VALUATIONS BY SCHOOL DISTRICTS AS EQUALIZED BY DEPARTMENT OF TAXATION, TAX INCLUDING STATE HOMESTEAD, SPECIAL TAXES, TOTAL TAXES, PAID, WHEN PAID, Number of Receipts, March Settlement 1957, June Settlement 1957, November Settlement 1957, Collections to First Monday in January 1958, Delinquent on First Monday in January 1958, Total Delinquent Tax and Penalty, REMARKS.

Wildmere Beach, Harold's Lakeshore, Lido Shores, Harbor Heights Echo Hill









Assessment Roll and Tax List of Real Property in the Town of Powers

Cass County, Minnesota, for Taxes for the Year 1956.

Form 50 (1956) ... Indicate Type of Property: R-Residential, C-Commercial, I-Industrial, U-Utility, F-Farm, L-Lakeshore, T-Timber, M-Mineral

Table with columns: IN WHOSE NAME ASSESSED, TO WHOM TRANSFERRED, SUBDIVISION, DESCRIPTION OF PROPERTY, TRUE AND FULL VALUATIONS, ASSESSED VALUATIONS, VALUATIONS BY SCHOOL DISTRICTS AS EQUALIZED BY DEPARTMENT OF TAXATION, TAXES, PAID, WHEN PAID, Number of Receipt, March Settlement 1957, June Settlement 1957, November Settlement 1957, Penalty, Collections to First Monday in January 1958, Delinquent on First Monday in January 1958, Total Delinquent Tax and Penalty, REMARKS.

Vertical text on the left margin: Hill, Wildmere Beach, Lakeshore, on Rainy Lake, Idolo Shore, Sanborn Heights, MarRoy

Vertical text on the right margin: Spec, Gillespies Sub-Division, Echo Hill

Assessment Roll and Tax List of Real Property in the Town of Powers

Cass County, Minnesota, for Taxes for the Year 1956.

Indicate Type of Property: R-Residential, C-Commercial, I-Industrial, U-Utility, F-Farm, L-Lakeshore, T-Timber, M-Minerals

Table with columns: IN WHOSE NAME ASSESSED, TO WHOM TRANSFERRED, SUBDIVISION, DESCRIPTION OF PROPERTY, TRUE AND FULL VALUATIONS, ASSESSED VALUATIONS, VALUATIONS BY SCHOOL DISTRICTS AS EQUALIZED BY DEPARTMENT OF TAXATION, SOLD FOR TAXES, SPECIAL TAXES, TOTAL TAXES, PAID, WHEN PAID, Number of Receipt, March Settlement 1957, June Settlement 1957, Penalty, November Settlement 1957, Penalty, Collections to First Monday in January 1958, Delinquent on First Monday in January 1958, Total Delinquent Tax and Penalty, REMARKS.

Vertical text on the left margin: Echo Hill, Powers, etc.

Vertical text on the right margin: Specialties Sub-Division, Personal



