

1932
Tax List
PONTO LAKE

Treasurer's Office, Cass County, Minnesota

RECEIVED this, the first Monday (being the 2nd day) of January, A. D. 1933, of A. A. Cates, Auditor of said County, Minnesota, the Tax List of all Taxable Real and Personal Property in the Town of Ponto Lake in said County for the year A. D. 1932, as specified above and amounting to eight thousand one hundred thirty two 2/100 Dollars.

W. T. McKeown
County Treasurer.

Office of County Treasurer, Cass County, Minnesota

January 2, 1933

To L. O. Peterson, County Auditor:

Sir: Herewith return to you the Tax List for the Town of Ponto Lake in said County for the year 1932, heretofore received from you. I certify that I have compared the same with the duplicate receipts in your office, and have written opposite the amount of each tax so receipted the words "One half paid" or "Paid in full" as the case may be, and the number of my receipt given in discharge of said tax, and each tract or lot of real property against which the taxes remain unpaid is delinquent for said year.

Yours Respectfully,
W. T. McKeown
County Treasurer.

Auditor's Office, Cass County, Minnesota

I, A. A. Cates, Auditor of said County, and State of Minnesota, do hereby certify that the following is a correct list of the Taxes levied on the Real and Personal Property in the Town of Ponto Lake for the year 1932.

WITNESS my hand and official seal, the 2nd day of January, 1933.

(SEAL) A. A. Cates
County Auditor.

Auditor's Office, Cass County, Minnesota

Jan. 2 1933

I hereby certify that on the first Monday in January, 1933, I received of W. T. McKeown, County Treasurer, the Tax List of the Town of Ponto Lake in said County for the year 1932, that I have compared the said list with the Statements receipted for by said Treasurer, which are on file in my office, and that each tract or lot of real property therein against which the taxes, or any part thereof, remains unpaid are delinquent for said year.

(SEAL) _____
County Auditor.

COLLECTIONS OF TAXES OF 1932, Town OF Ponto Lake, CASS COUNTY, MINNESOTA

FUNDS	MARCH SETTLEMENT	JUNE SETTLEMENT	OCTOBER SETTLEMENT	Amount Collected From November 1st to First Monday in January	MARCH SETTLEMENT	JUNE SETTLEMENT	OCTOBER SETTLEMENT	TOTAL	BALANCE UNCOLLECTED					
	193 <u>2</u>	193 <u>2</u>	193 <u>2</u>		193	193	193							
State Revenue,	3302	10655	6079	571										
State School,	589	1899	1084	102										
Teacher's Insurance,	57	185	106	10										
Minn. Gen'l Hospital,	239	772	440	11										
County Revenue,	4603	14855	8475	797										
County Road and Bridge,	2110	6810	3885	365										
County Poor,	8297	20776	15276	1436										
Road Maintenance,	2675	8632	4925	465										
County Bond and Interest,	5871	18977	10809	1016										
County Sinking,	718	2316	1321	124										
Town Revenue,	1742	5621	3207	301										
Town Road and Bridge,	1206	3891	2220	209										
Town Drag Tax	478	1544	881	83										
Town State Loan,	6120	19750	11268	1059										
<i>Phone</i>	2392	7721	4405	414										
Local 1 Mill School,	478	1544	881	83										
Special School,	12765	41202	23503	2211										
State Loan School,	2120	6841	3903	367										
<i>Sinking Interest</i>	517	1668	951	89										
	389	1251	714	67										
Moneys and Credits,														
TOTALS	56667	182880	104333	9808										
SCHOOL DISTRICTS	Special Tax	General Tax	TOTAL	Special Tax	General Tax	TOTAL	Special Tax	General Tax	TOTAL	Special Tax	General Tax	TOTAL	TOTAL	Balance Uncollected
School District No.														
School District No.														
School District No.														
School District No.														
TOTAL														

UNPLATTED

Tax List of Real Property in the Town of Ponto Lake

IN WHOSE NAME ASSESSED	TO WHOM TRANSFERRED	Sold for Taxes	SUB-DIVISION	Sec. or Lot	Town or Block	No. of Acres		VALUATION	No. School Dist.	GENERAL TAXES	School District	School District	School District
						Rate	Rate				Rate		
<i>A.L. Undine</i>			NE 1/4 of NE 1/4	1	139 29	39 50	122						
"			NW 1/4 of NE 1/4			38 50	119						
"			SW 1/4 of NE 1/4			40	123						
"			SE 1/4 of NE 1/4			40	123						
"			NE 1/4 of NW 1/4			37 50	116						
"			NW 1/4 of NW 1/4			36 50	113						
"			SW 1/4 of NW 1/4			40	92						
"			SE 1/4 of NW 1/4			39 75	62						
"			NE 1/4 of SW 1/4			27	15						
"			NW 1/4 of SW 1/4			21	49						
"			SW 1/4 of SW 1/4			55 75	123						
"			SE 1/4 of SW 1/4										
"			NE 1/4 of SE 1/4			40	92						
"			NW 1/4 of SE 1/4			40	92						
"			SW 1/4 of SE 1/4			40	123						
"			SE 1/4 of SE 1/4			35 55	113						
						571 05	1477						

Cass County, Minnesota, for Taxes for the Year 1932

Ditch No.	Ditch No.	Ditch No.	Ditch No.	TOTAL TAXES	PAID	WHEN PAID	Number of Receipt	March Settlement	June Settlement	Penalty	November Settlement	Penalty	Collections to First Monday in January	Penalty	Delinquent on First Monday in January	REMARKS
				1445	2nd Half Paid	OCT 31 1933										
				1409	1st Half Paid	MAY 31 1933										
				1457	2nd Half Paid	OCT 31 1933										
				1457	1st Half Paid	MAY 31 1933										
				1457	2nd Half Paid	OCT 31 1933										
				1374	1st Half Paid	MAY 31 1933										
				1338	2nd Half Paid	OCT 31 1933										
				1090	1st Half Paid	MAY 31 1933										
				734	2nd Half Paid	OCT 31 1933										
				178	1st Half Paid	MAY 31 1933										
				580	2nd Half Paid	OCT 31 1933										
				1457	1st Half Paid	MAY 31 1933										
				1090	2nd Half Paid	OCT 31 1933										
				1090	1st Half Paid	MAY 31 1933										
				1457	2nd Half Paid	OCT 31 1933										
				1338	1st Half Paid	MAY 31 1933										
				17494												

6957 ✓ 8747 ✓ 8747

8747 8747

Tax List of Real Property in the Town of Ponto Lake

IN WHOSE NAME ASSESSED	TO WHOM TRANSFERRED	Sold for Taxes	SUB-DIVISION	Sec. or Lot	Town or Block	No. of Acres		VALUATION	No. School Dist.	GENERAL TAXES	School District	School District	School District
						Rate	Rate				Rate		
Central Union Trust Co., N.Y.			NW 1/4 of NE 1/4 Lot 2	3	139	29	30	92					
Anna Reynolds			110' x 250' of Lot 1				63	38					
Mrs. Philomena Baumgartner			SW 1/4 of NE 1/4 Lot 5				13	80					
C.A. Bettyman	George H. Logan		SE 1/4 of NE 1/4 Lot 6 less 5 1/2 x 1 1/2 ac.				6	50	67	82			
J. Miller & Veronica Miller			100' x 200' x 100' x 190' of Lot 1				45	30					
The Omaha Lake Outing Club			NE 1/4 of NW 1/4 Lot 3				35	08		108			
Fanny L. Cooke			NW 1/4 of NW 1/4 " 4				35	32		109			
Ava E. Lowe			SW 1/4 of NW 1/4				40			114			
The Omaha Lake Outing Club			SE 1/4 of NW 1/4				40			123			
M.F. Heilig			600' x 550' x 600' x 400' of Lot 1				6	54		35			
The Omaha Lake Outing Club			NE 1/4 of SW 1/4 Lot 9				55			407			
Clara M. Calvert			NW 1/4 of SW 1/4				40			129			
"			SW 1/4 of SW 1/4 " 10				32	15		157			
D.A. Thorson			100' x average of 550' of Lot 1				1	32		8			
P.W. Stallings			130 x 275 x 130 x 250' of Lot 1					78		8			
J. Schottler	C.H. & Wm. Hetherington		NE 1/4 of SE 1/4 Lot 7				40			123			
"	"		NW 1/4 of SE 1/4 " 8				26	60		101			
James H. Walker			SW 1/4 of SE 1/4 " 11				18	10		76			
"			SE 1/4 of SE 1/4				40			123			
Clara Kline	M.F. Heilig		180 x 400 x 180 x 275' of Lot 1				1	34		11			
Louis F. Alexander			No. 800' of N 1/2 of Lot 6				1	50		15			
								465	11	1931			

Cass County, Minnesota, for Taxes for the Year 1932

Ditch No.	Ditch No.	Ditch No.	Ditch No.	TOTAL TAXES	PAID	WHEN PAID	Number of Receipt	March Settlement	June Settlement	Penalty	November Settlement	Penalty	Collections to First Monday in January	Penalty	Delinquent on First Monday in January	REMARKS
				1090	1	PAID IN FULL										
				480	2											
				675	3											
				793	4										867	793 .74
				355	5	2nd Half Paid										
				1279	6	PAID IN FULL										
				1291	7	DEL. Oct. 13 1932										
				1350	8	2nd Half Paid										
				1457	9	PAID IN FULL										
				415	10	PAID IN FULL										
				4820	11	PAID IN FULL										
				1528	12	2nd Half Paid										
				1859	13	2nd Half Paid										
				95	14											
				95	15											
				1457	16	1st Half Paid										796 728 .68
				1196	17	1st Half Paid										654 598 .66
				900	18	PAID IN FULL										
				1457	19	PAID IN FULL										
				130	20	PAID IN FULL										
				178												
				228.70												
								148	77			30	90			

Tax List of Real Property in the Town of Ponto Lake

IN WHOSE NAME ASSESSED	TO WHOM TRANSFERRED	Sold for Taxes	SUB-DIVISION	Sec. or Lot	Town or Block	No. of Acres		VALUATION	No. School Dist.	GENERAL TAXES	School District	School District	School District								
						Reg.	100's				No. Rate	No. Rate	No. Rate								
										Mills			Mills			Mills					
										Dollars			cts.			cts.			cts.		
Len J. Kimball	1		20x250x20x235' of Lot 1	3	13929	09	8														
	2		50x235x50x200' of Lot 1			24	34														
Carrie Linden	3		75' average of 550' of Lot 1			95	8														
	4		SE 1/4 of NE 1/4																		
Joseph M. & Sue S. Dickson	5		SE 1/2 of Lot 6	3	13929	12.00	35														
	6		NE 1/4 of NW 1/4																		
	7		NW 1/4 of NW 1/4																		
	8		SW 1/4 of NW 1/4																		
	9		SE 1/4 of NW 1/4																		
	10																				
	11		NE 1/4 of SW 1/4																		
	12		NW 1/4 of SW 1/4																		
	13		SW 1/4 of SW 1/4																		
	14		SE 1/4 of SW 1/4																		
	15																				
	16		NE 1/4 of SE 1/4																		
	17		NW 1/4 of SE 1/4																		
	18		SW 1/4 of SE 1/4																		
	19		SE 1/4 of SE 1/4																		
	20																				
										13.28			85								

Cass County, Minnesota, for Taxes for the Year 1932

Ditch No.	Ditch No.	Ditch No.	Ditch No.	TOTAL TAXES	PAID	WHEN PAID	Number of Receipt	March Settlement	June Settlement	Penalty	November Settlement	Penalty	Collections to First Monday in January	Penalty	Delinquent on First Monday in January	REMARKS
Month Day Year																
				95	1											
				403	2											
				95	3											
					4											
				415	5	PAID IN FULL		OCT 12 1933	6054				415	15		
					6											
					7											
					8											
					9											
					10											
					11											
					12											
					13											
					14											
					15											
					16											
					17											
					18											
					19											
					20											
1008																
415																

Tax List of Real Property in the Town of Ponto Lake

IN WHOSE NAME ASSESSED	TO WHOM TRANSFERRED	Sold for Taxes	SUB-DIVISION	Sec. or Lot	Town or Block	No. of Acres		VALUATION	No. School Dist.	GENERAL TAXES	School District	School District	School District	
						Reg.	100's				No. Rate	No. Rate	No. Rate	
								Dollars	cts.			cts.		
Fanny L. Cooke			NE 1/4 of NE 1/4 Lot 1	4	139 29	27	45	85						
Ed. Clevenger & Henry & Cohen & Fanny L. Cooke			SW 1/4 of NE 1/4 " 2				42	82						
			SW 1/4 of NE 1/4 " 6				24	50						
			SE 1/4 of NE 1/4				40	104						
			NE 1/4 of NW 1/4											
Ed. Clevenger & Henry & Cohen & Belle Barry Sullivan			NW 1/4 of NW 1/4 " 3				35	96						
			SW 1/4 of NW 1/4 " 4				30	25						
Ed. Clevenger & Henry & Cohen & D.D. Sullivan			SE 1/4 of NW 1/4 " 5				17	30						
			NE 1/4 of SW 1/4 " 7				20	55						
			NW 1/4 of SW 1/4											
Wm. N. Darrey & D.D. Sullivan			SW 1/4 of SW 1/4 " 9				15	61						
			SE 1/4 of SW 1/4 " 8				39	99						
Nattie J. Krieger & Franklin Krieger & Eddie K. Scott & Clarence K. George & Carloline Krieger			NE 1/4 of SE 1/4				40	123						
			NW 1/4 of SE 1/4				40	123						
			SW 1/4 of SE 1/4				40	123						
			SE 1/4 of SE 1/4				40	123						
								45382	1870					

Cass County, Minnesota, for Taxes for the Year 1932

Ditch No.	Ditch No.	Ditch No.	Ditch No.	TOTAL TAXES	PAID	WHEN PAID	Number of Receipt	March Settlement	June Settlement	Penalty	November Settlement	Penalty	Collections to First Monday in January		Penalty	Delinquent on First Monday in January		REMARKS
													\$	cts.		\$	cts.	
				Dollars	cts.	Month	Day	Year			\$	cts.	\$	cts.	\$	cts.	\$	cts.
				1007	1	DEL. Oct. 7 1934	1964						11	01	10	07	.94	
				1537	2													
				2286	3	DEL. Oct. 7 1934	1964						35	00	22	86	2.14	
				1232	4	DEL. Oct. 7 1934	1964						13	47	12	32	1.15	
					5													
					6													
				1315	7													
				1101	8	DEL. 7 78 1934	1041											
				628	9													
					10													
				768	11	DEL. 7 78 1934	1041											
					12													
				722	13	DEL. 7 78 1934	1041											
				1457	14	DEL. 7 78 1934	1041											
					15													
				1457	16	PAID IN FULL	MAY 31 1933											
				1457	17	PAID IN FULL	MAY 31 1933											
				1457	18	PAID IN FULL	MAY 31 1933											
				1457	19	PAID IN FULL	MAY 31 1933											
					20													
				17885														
										27	20							

Tax List of Real Property in the Town of Ponto Lake

IN WHOSE NAME ASSESSED	TO WHOM TRANSFERRED	Sold for Taxes	SUB-DIVISION	Sec. or Lot	Town or Block	No. of Acres		VALUATION	No. School Dist.	GENERAL TAXES	School District	School District	School District									
						Rng.	Acres				100's	No. Rate	No. Rate	No. Rate								
													Dollars			cts.	\$	cts.	\$	cts.	cts.	
Farmer's St. Bk., Pine River			NE 1/4 of NE 1/4				7	139 29	52	60			175									
"			NW 1/4 of NE 1/4																			
J. D. Mc Collister			SW 1/4 of NE 1/4		7			20	25	62												
N. F. Lopez Jr. et al			SE 1/4 of NE 1/4		9			22	55	80												
Jonas F. Nelson			NE 1/4 of NW 1/4					40		123												
Central Union Trust Co., N.Y.			NW 1/4 of NW 1/4		1			50	17	154												
"			SW 1/4 of NW 1/4		2			50	42	154												
Jonas F. Nelson			SE 1/4 of NW 1/4					40		123												
Arthur Mc Bride			NE 1/4 of SW 1/4		6			38		132												
Central Union Trust Co., N.Y.			NW 1/4 of SW 1/4		3			50	68	153												
"			SW 1/4 of SW 1/4		4			47	30	144												
Frank Johnson			SE 1/4 of SW 1/4		5			27	20	83												
J. D. Mc Collister			NE 1/4 of SE 1/4		10			28	70	88												
Central Union Trust Co., N.Y.			NW 1/4 of SE 1/4		11			35	65	110												
"			SW 1/4 of SE 1/4																			
"			SE 1/4 of SE 1/4					40		123												
								573	49	1706												

Cass County, Minnesota, for Taxes for the Year 1932

Ditch No.	Ditch No.	Ditch No.	Ditch No.	TOTAL TAXES	PAID	WHEN PAID	Number of Receipt	March Settlement	June Settlement	Penalty	November Settlement	Penalty	Collections to First Monday in January	Penalty	Delinquent on First Monday in January	REMARKS
				2073	1											
				2												
				734	3	PAID IN FULL	SEP 26 1932	5860								Discount.
				947	4											
				1457	5											
				1824	7	PAID IN FULL	MAY 31 1933	4469		1824						
				1824	8	PAID IN FULL	MAY 31 1933		1824							
				1457	9											
				1563	10											
				1836	12	PAID IN FULL	MAY 31 1933	4469		1836						
				1705	13	PAID IN FULL	MAY 31 1933		1705							
				983	14	2nd Half Paid	OCT 31 1933	4587		492		491				
				15		1st Half Paid	MAY 31 1933									
				1042	16	PAID IN FULL	SEP 26 1932	5860								
				1303	17	PAID IN FULL	MAY 31 1933	4469		1303						
				1457	19	PAID IN FULL	MAY 31 1933	4469		1457						
				20												
				20205					10441		1770					

Tax List of Real Property in the Town of Ponto Lake

IN WHOSE NAME ASSESSED	TO WHOM TRANSFERRED	Sold for Taxes	SUB-DIVISION	No. of Acres		VALUATION	No. School Dist.	GENERAL TAXES	School District	School District	School District
				Sec. or Lot	Town or Block				Rate	Rate	Rate
Mary E. Darrey			NE 1/4 of NE 1/4	8	13929 40	123					
Thm. H. Darrey			NW 1/4 of NE 1/4		40	92					
Central Union Trust Co., N.Y.			SW 1/4 of NE 1/4		40	123					
Mary E. Darrey			SE 1/4 of NE 1/4		40	132					
H. J. Logee et al			NE 1/4 of NW 1/4		40	92					
"			NW 1/4 of NW 1/4 Lot 1		36 25	92					
"			SW 1/4 of NW 1/4		40	126					
"			SE 1/4 of NW 1/4		40	123					
Ami. Stuebel & int. Joseph Johnson & int. Florence L. Engel			NE 1/4 of SW 1/4		40	123					
"			NW 1/4 of SW 1/4		40	122					
Central Union Trust Co., N.Y.			SW 1/4 of SW 1/4		40	123					
"			SE 1/4 of SW 1/4		40	123					
Mary E. Darrey			NE 1/4 of SE 1/4		40	123					
Central Union Trust Co., N.Y.			NW 1/4 of SE 1/4		40	123					
"			SW 1/4 of SE 1/4		40	123					
Mary E. Darrey			SE 1/4 of SE 1/4		40	152					

63625 1915

Cass County, Minnesota, for Taxes for the Year 1932

Ditch No.	Ditch No.	Ditch No.	Ditch No.	TOTAL TAXES	PAID	WHEN PAID	Number of Receipt	March Settlement	June Settlement	Penalty	November Settlement	Penalty	Collections to First Monday in January		Penalty	Delinquent on First Monday in January		REMARKS	
													\$	cts.		\$	cts.		\$
				1457															
				1090															
				1457	3	PAID IN FULL	MAY 3 1 1933	4469											
				1563	4														
				1090	6														
				1090	7														
				1492	8														
				1457	9														
				1457	11	PAID IN FULL	JAN 2 8 1933												
				1445	12	PAID IN FULL	JAN 2 8 1933	117											
				1457	13	PAID IN FULL	MAY 3 1 1933	4469											
				1457	14	PAID IN FULL	MAY 3 1 1933	4469											
				1457	16														
				1457	17	PAID IN FULL	MAY 3 1 1933	4469											
				1457	18	PAID IN FULL	MAY 3 1 1933	4469											
				1800	19														
					20														
				22683															

2902 7285

Tax List of Real Property in the Town of Ponto Lake

IN WHOSE NAME ASSESSED	TO WHOM TRANSFERRED	Sold for Taxes	SUB-DIVISION	Sec. of Lot	Town or Block	No. of Acres		VALUATION	No. School Dist.	GENERAL TAXES	School District	School District	School District
						Reg.	100's				No. Rate	No. Rate	No. Rate
								Dollars	cts. \$ cts. \$ cts. \$ cts. \$ cts.				
C.H. Eckles	Alice L. Eckles		NE 1/4 of NE 1/4		Lat 1	9	139 29 25 65	79					
Peter N. Truckow			NW 1/4 of NE 1/4				40	123					
"			SW 1/4 of NE 1/4	" 2			39	40	172				
"			SE 1/4 of NE 1/4										
Esma Duc			NE 1/4 of NW 1/4			40		108					
"			NW 1/4 of NW 1/4			40		92					
Peter N. Truckow			SW 1/4 of NW 1/4			40		87					
"			SE 1/4 of NW 1/4			40		144					
J.J. Davy			NE 1/4 of SW 1/4			40		123					
"			NW 1/4 of SW 1/4			40		123					
"			SW 1/4 of SW 1/4			40		137					
"			SE 1/4 of SW 1/4			40		123					
"			NE 1/4 of SE 1/4										
"			NW 1/4 of SE 1/4		Lat 3 less plat	32		98					
"			SW 1/4 of SE 1/4		" f " "	30		104					
"			SE 1/4 of SE 1/4										
								487 05	1513				

Cass County, Minnesota, for Taxes for the Year 1932

Ditch No.	Ditch No.	Ditch No.	Ditch No.	TOTAL TAXES	PAID	WHEN PAID	Number of Receipt	March Settlement	June Settlement	Penalty	November Settlement	Penalty	Collections to First Monday in January	Penalty	Delinquent on First Monday in January	REMARKS
Dollars cts. Month Day Year \$ cts. \$ cts. \$ cts. \$ cts. \$ cts. \$ cts. \$ cts. \$ cts. \$ cts.																
				936	1	PAID IN FULL		APR 17 1933								
				1457	2	1st Half Paid		MAY 13 1933							796 728 .68	
				2037	3	1st Half Paid		MAY 13 1933							1114 1019 .95	
					4											
					5											
				1279	6											
				1090	7											
				1030	8	1st Half Paid		MAY 13 1933							563 515 .48	
				1705	9	1st Half Paid		MAY 13 1933							932 852 .80	
					10											
				1457	11											
				1457	12											
				1622	13											
				1457	14											
					15											
					16											
				1161	17											
				1232	18											
					19											
					20											
				17920					4051							

Tax List of Real Property in the Town of Ponto Lake

IN WHOSE NAME ASSESSED	TO WHOM TRANSFERRED	Sold for Taxes	SUB-DIVISION	Sec. or Lot	Town or Block	No. of Acres		VALUATION	No. School Dist.	GENERAL TAXES	School District	School District	School District
						Rate	Rate				Rate		
E. Eckhardt			NE 1/4 of NE 1/4	13	139	29	93	70				103	
Fowler & Chapman			NW 1/4 of NE 1/4				53	50				165	
			SW 1/4 of NE 1/4										
Central Union Trust Co., N.Y.			SE 1/4 of NE 1/4				40					123	
Ralph H. Sperry			NE 1/4 of NW 1/4				40					123	
"			NW 1/4 of NW 1/4				40					123	
"			SW 1/4 of NW 1/4				40					123	
"			SE 1/4 of NW 1/4				40					123	
"			NE 1/4 of SW 1/4				40					123	
Jenny Nelson			NW 1/4 of SW 1/4				40					77	
Rosa A. Greese			SW 1/4 of SW 1/4				40					123	
Jenny Nelson			SE 1/4 of SW 1/4				40					156	
Fowler & Chapman			NE 1/4 of SE 1/4				40					123	
"			NW 1/4 of SE 1/4				40					123	
Central Union Trust Co., N.Y.			SW 1/4 of SE 1/4				40					123	
"			SE 1/4 of SE 1/4				40					123	
						607		20			1854		

Cass County, Minnesota, for Taxes for the Year 1932

Ditch No.	Ditch No.	Ditch No.	Ditch No.	TOTAL TAXES	PAID	WHEN PAID	Number of Receipt	March Settlement	June Settlement	Penalty	November Settlement	Penalty	Collections to First Monday in January	Penalty	Delinquent on First Monday in January	REMARKS
				12 20												
				19 54												
				14 57	4	PAID IN FULL	MAY 3 1 1933	4469	✓	1457	✓					
				14 57	6											
				14 57	7											
				14 57	8											
				14 57	9											
				14 57	11											
				9 12	12											
				14 57	13											
				18 48	14	PAID IN FULL	MAR 22 1933	1856	✓	1848	✓					
				14 57	16											
				14 57	17											
				14 57	18	PAID IN FULL	MAY 3 1 1933	4469	✓	2914	✓					
				14 57	19	PAID IN FULL	MAY 3 1 1933									
					20											
				219 61					1848	4371						

1334 1220 1.14

997 912.85

Tax List of Real Property in the Town of Ponto Lake

IN WHOSE NAME ASSESSED	TO WHOM TRANSFERRED	Sold for Taxes	SUB-DIVISION	Sec. or Lot	Town or Block	Rng.	No. of Acres		VALUATION	No. School Dist.	GENERAL TAXES	School District	School District	School District				
							Acres	100's				No. Rate	No. Rate	No. Rate				
										Mills			Mills			Mills		
										cts.	\$ cts.	\$ cts.	\$ cts.	cts.				
Theo. J. Albrecht			NE 1/4 of NE 1/4				15	139	29	40			141					
"			NW 1/4 of NE 1/4 Lot 1 less 1 ac. & less 75 ac.					32	45			191						
"			SW 1/4 of NE 1/4 " 7					29	35			31						
"			SE 1/4 of NE 1/4 " 8					28	70			88						
John Stacy			100' x 120' of Lot 3 on lake						28			29						
Theo. J. Albrecht			NE 1/4 of NW 1/4 Lot 2					36	55			426						
Olive S. Ponsford			NW 1/4 of NW 1/4 " 3 less 2.51 ac.					25	49			159						
H. P. Hinshaw			SW 1/4 of NW 1/4 " 4					21	70			96						
"			SE 1/4 of NW 1/4 " 5					17	90			15						
M. Sheffer			100' x 120' of Lot 3						28			29						
H. P. Hinshaw			NE 1/4 of SW 1/4					40				46						
"			NW 1/4 of SW 1/4 " 6					41	50			161						
Mary V. Smith & int. Elm, Isabelle, Maggie, & Albert V. Smith, each 1/2 int.			SW 1/4 of SW 1/4					40				46						
"			SE 1/4 of SW 1/4					40				77						
Arvil G. Hinshaw			133 x 150' of Lot 3 from lake to st. road					46				33						
Sam Dougherty			NE 1/4 of SE 1/4 Lot 9					17	75			106						
H. P. Hinshaw			NW 1/4 of SE 1/4 " 12					28	80			61						
"			SW 1/4 of SE 1/4 " 11					35	50			109						
"			SE 1/4 of SE 1/4 " 10					15	10			60						
Mrs. Omar Todd			50 x 180' of Lot 3						21			7						
Elmer Ellingson			1 acre of Lot 1					1				34						
A. G. Hinshaw			75' x 160' of Lot 8					28				7						
										498	30	1952						

Cass County, Minnesota, for Taxes for the Year 1932

Ditch No.	Ditch No.	Ditch No.	Ditch No.	TOTAL TAXES	PAID	WHEN PAID	Number of Receipt	March Settlement	June Settlement	Penalty	November Settlement	Penalty	Collections to First Monday in January	Penalty	Delinquent on First Monday in January	REMARKS
				1670	1											
				2262	2	OCT 31 1933										
				367	3	2nd Half Paid MAY 31 1933	7003			2671			5670			
				1042	4	1st Half Paid	4266									
				343	5											
				5046	6	2nd Half Paid OCT 31 1933	7003			2523			2622			
				1883	7	1st Half Paid APR 21 1933	6864			942			941			
				1137	8	DEL. 5 9 1934	1268						1243	1139	1.06	
				178	9	DEL. 5 9 1934	1268						195	178	.17	
				343	10	PAID IN FULL MAR 15 1933	1651			343						
				545	11	DEL. 5 9 1934	1268						596	545	.51	
				1907	12	DEL. 5 9 1934							2085	1907	1.78	
				545	13											
				912	14											
				391	15	PAID IN FULL JUL 28 1933	5406						391	08		
				1235	16	DEL. 11 5 1934	2008						1372	1255	1.17	
				722	17	DEL. 5 9 1934							789	722	.67	
				1291	18	DEL. 5 9 1934	1268						1411	1291	1.20	
				711	19	DEL. 5 9 1934							777	711	.66	
				83	20	PAID IN FULL DEC 30 1933	7692						83	07		
				403		PAID IN FULL MAY 26 1933	3162			403						
				83		PAID IN FULL JUL 28 1933	5406						83	02		
				23118					343	6539		6607		83		

Tax List of Real Property in the Town of Ponto Lake

IN WHOSE NAME ASSESSED	TO WHOM TRANSFERRED	Sold for Taxes	SUB-DIVISION	Sec. or Lot	Town or Block	No. of Acres		VALUATION	No. School Dist.	GENERAL TAXES	School District	School District	School District
						Acres	100's				No. Rate	No. Rate	No. Rate
										cts.	\$ cts.	\$ cts.	cts.
Lloyd Paul			NE 1/4 of NE 1/4 Lot 1 less Kinne	16	139	29	19	50		76			
N.B. Kinne			NW 1/4 of NE 1/4 Lot 2 less sold				31	98		142			
Oscar Gooden			SW 1/4 of NE 1/4				40			173			
"			SE 1/4 of NE 1/4				40			127			
Vic Ufford			Part of Lot 2				25			25			
Geo. Tschida			NE 1/4 of NW 1/4				40			148			
"			NW 1/4 of NW 1/4				40			161			
Johanna Donovan			SW 1/4 of NW 1/4				40			131			
"			SE 1/4 of NW 1/4				40			123			
D.A. Ferguson			1/2 of part of Lot 2				37			16			
Mike Smith			NE 1/4 of SW 1/4				40			135			
"			NW 1/4 of SW 1/4				40			143			
"			SW 1/4 of SW 1/4				40			157			
"			SE 1/4 of SW 1/4				40			190			
Chas. De Hatt			1/2 of part of Lot 2				38			16			
Michael Smith			NE 1/4 of SE 1/4				40			123			
"			NW 1/4 of SE 1/4				40			114			
"			SW 1/4 of SE 1/4				40			383			
"			SE 1/4 of SE 1/4				40			123			
Fred Kruckow			100' x 100' of Lot 2				22			33			
Mary E. Richardson			5 acres of " 2				5			48			
								617		70		25	84

Cass County, Minnesota, for Taxes for the Year 1932

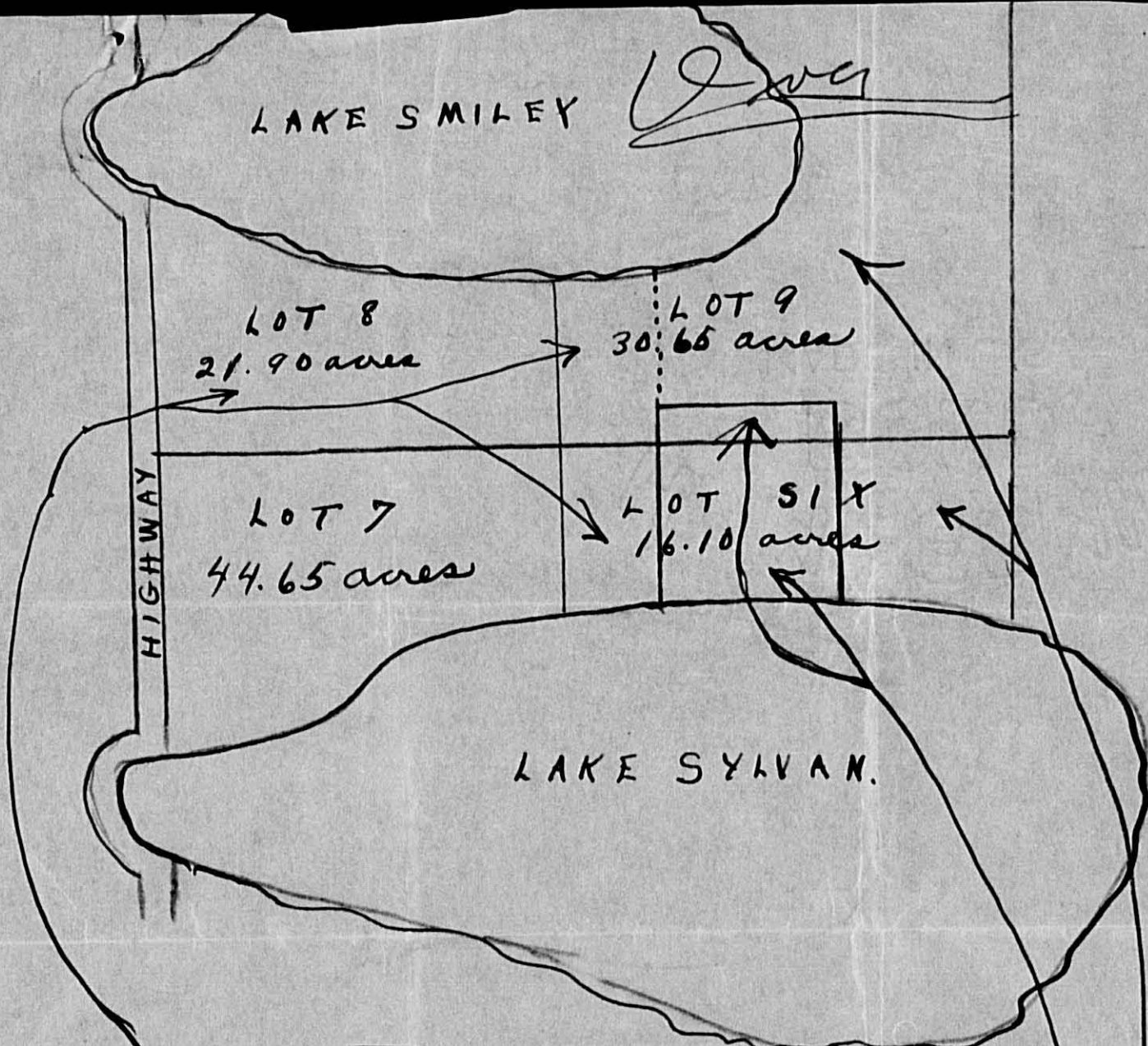
Ditch No.	Ditch No.	Ditch No.	Ditch No.	TOTAL TAXES	PAID	WHEN PAID	Number of Receipt	March Settlement	June Settlement	Penalty	November Settlement	Penalty	Collections to First Monday in January		Penalty	Delinquent on First Monday in January		REMARKS	
													\$	cts.		\$	cts.		\$
\$	cts.	\$	cts.	\$	cts.	Month	Day	Year	\$	cts.	\$	cts.	\$	cts.	\$	cts.	\$	cts.	
				900	1											984	900	.84	
				1682	2											1839	1682	1.57	
				2049	3	1st Half Paid	MAY 31	1933	3959				1025			1120	1024	.96	
				1504	4	1st Half Paid	MAY 31	1933	3959				752			822	752	.70	
				296		PAID IN FULL	FEB 7	1933	391				296						
				1763	6	DEL.	8 3	1934											
				1907	7	DEL.	8 3	1934	1905										
				1551	8	DEL.	8 3	1934											
				1457	9	DEL.	8 3	1934											
				189	10	PAID IN FULL	MAR 15	1933	1661				189						
				1599	11											1748	1599	1.49	
				1694	12											1852	1694	1.58	
				1824	13											1994	1824	1.70	
				2250	14											2460	2250	2.10	
				189	15	PAID IN FULL	APR 10	1933	2474				189						
				1457	16														
				1350	17														
				4536	18														
				1457	19														
				391	20	PAID IN FULL	MAY 31	1933	3990				391						
				568		Ad 1/13/34 Del.													
				30603									485		2357				

Tax List of Real Property in the Town of Ponto Lake

IN WHOSE NAME ASSESSED	TO WHOM TRANSFERRED	Sold for Taxes	SUB-DIVISION	Sec. or Lot	Town or Block	No. of Acres		VALUATION	No. School Dist.	GENERAL TAXES	School District	School District	School District		
						Rate	Rate				Rate				
										No.	No.	No.			
										Mills	Mills	Mills			
										cts.	\$	cts.	\$	cts.	cts.
C.H. Baldwin	Central Union Trust Co., N.Y.		NE 1/4 of NE 1/4	18	139	29	40	129							
"	"		NW 1/4 of NE 1/4				40	123							
C.H. Baldwin	"		SW 1/4 of NE 1/4				40	123							
"	"		SE 1/4 of NE 1/4				40	227							
C.B. Moffett			NE 1/4 of NW 1/4 Lat 2				37	05							
"			NW 1/4 of NW 1/4												
Fred Doerr			SW 1/4 of NW 1/4 Lat 3 less 12 1/2 rds. x 12 1/2 rds.				38	07							
C.B. Moffett			SE 1/4 of NW 1/4				40	227							
Fred H. Kument	Alberta Ellingsson	Fred H. Kument	12 1/2 rds. x 12 1/2 rds. of Lat 3				98	33							
Christian H. Hendt			NE 1/4 of SW 1/4				40	169							
"			NW 1/4 of SW 1/4 E. 20.80 ac. of				20	80							
"			SW 1/4 of SW 1/4 Lots 405												
"			SE 1/4 of SW 1/4				40	148							
Mont Garten			1/2 80 acres of Lots 405				80	429							
Margaret Renck			NE 1/4 of SE 1/4				40	195							
Christian H. Hendt	First National Bank, Walker		NW 1/4 of SE 1/4				40	129							
"	"		SW 1/4 of SE 1/4				40	154							
Margaret Renck			SE 1/4 of SE 1/4				40	205							
								616	90		2649				

Cass County, Minnesota, for Taxes for the Year 1932

Ditch No.	Ditch No.	Ditch No.	Ditch No.	TOTAL TAXES	PAID	WHEN PAID	Number of Receipt	March Settlement	June Settlement	Penalty	November Settlement	Penalty	Collections to First Monday in January	Penalty	Delinquent on First Monday in January	REMARKS															
																	\$	cts.	\$	cts.	\$	cts.	\$	cts.	\$	cts.	\$	cts.	\$	cts.	
																Month	Day	Year													
																\$	cts.	\$	cts.	\$	cts.	\$	cts.	\$	cts.	\$	cts.	\$	cts.	\$	cts.
				1528	1											1671 1528 -1.43															
				1457	2	PAID IN FULL																									
				1457	3	PAID IN FULL																									
				2688	4											2939 2688 -2.51															
					5																										
				1705	6											1864 1705 -1.59															
					7																										
				1919	8																										
				2688	9											2939 2688 -2.51															
				391	10	PAID IN FULL																									
				2001	11	PAID IN FULL																									
				616	12	PAID IN FULL																									
					13																										
				1753	14	PAID IN FULL																									
				5081	15	PAID IN FULL																									
				2309	16	2nd Half Paid																									
				1528	17	DEL.																									
				1824	18	DEL.																									
				2428	19	2nd Half Paid																									
					20																										
				31373																											
									33	05		9818		3146																	



Sold to L. Edward Minette now of
Ft. Dodge, Iowa about 35 1/2 acres

Sold to F. A. Suss now of
Minneapolis, Minn. 10 acres

Sold to Bert Persons now of
St. Paul Minn
About 27 acres.

Lots 6-7-8-9 - Sec. 20-139-29



\$3.55 is still due on Lot 8.

All Lots 6 & 9 are paid in full.

Does not appear that F. A. Suss
paid any of same.

Bert Parsons tax paid.

Tax List of Real Property in the Town of Ponto Lake

Cass County, Minnesota, for Taxes for the Year 1932

IN WHOSE NAME ASSESSED	TO WHOM TRANSFERRED	Sold for Taxes	SUB-DIVISION	Sec. or Lot	Town or Block	No. of Acres		VALUATION	No. School Dist.	GENERAL TAXES	School District			Ditch No.	Ditch No.	Ditch No.	Ditch No.	TOTAL TAXES		PAID	WHEN PAID	Number of Receipt	March Settlement	June Settlement	Penalty	November Settlement	Penalty	Collections to First Monday in January	Penalty	Delinquent on First Monday in January	REMARKS					
						Ring.	Acres				100's	No. Rate	No. Rate					No. Rate	Dollars													cts.	\$	cts.	\$	cts.
John H. Johnson			NE 1/4 of NE 1/4			25	139	29	40									1457	1																	
"			NW 1/4 of NE 1/4					40										1457	2																	
E.L. Gilbert			SW 1/4 of NE 1/4					40										1457	3																	
St. Paul & Chicago Ry. Co.			SE 1/4 of NE 1/4					40										1457	4																	
John H. Johnson			NE 1/4 of NW 1/4					40										1457	6																	
Michael Smith			NW 1/4 of NW 1/4					40										1457	7																	
"			SW 1/4 of NW 1/4					40										1457	8																	
C.H. Smith			SE 1/4 of NW 1/4					40										1457	9																	
"																																				
"			NE 1/4 of SW 1/4					40										1457	11																	
"			NW 1/4 of SW 1/4					40										1457	12																	
"			SW 1/4 of SW 1/4					40										1457	13																	
"			SE 1/4 of SW 1/4					40										1457	14																	
St. Paul & Chicago Ry. Co.			NE 1/4 of SE 1/4					40										1457	16																	
C.H. Smith			NW 1/4 of SE 1/4					40										1457	17																	
"			SW 1/4 of SE 1/4					40										1457	18																	
St. Paul & Chicago Ry. Co.			SE 1/4 of SE 1/4					40										1457	19																	
				</																																

Tax List of Real Property in the Town of Ponto Lake

IN WHOSE NAME ASSESSED	TO WHOM TRANSFERRED	Sold for Taxes	SUB-DIVISION	Sec. or Lot	Town or Block	No. of Acres		VALUATION	No. School Dist.	GENERAL TAXES	School District					
						Rng.	Acres				No. Rate	No. Rate	No. Rate			
										cts.	\$	cts.	\$	cts.	cts.	
Frances N. Fowler			7.175' of Lot 3 7.175' of Lot 3	28	139	29	58	8								
Olaf O. Rovik			8.225' of Lot 3 8.225' of Lot 3													
S.J. Reader			7.600' of Lot 3 7.600' of Lot 3				92	52								
			11.137.4' of Lot 3 11.137.4' of Lot 3				12	267								
			NE 1/4 of NW 1/4													
Michael Smith			NW 1/4 of NW 1/4 Lot 1				8.50	110								
			SW 1/4 of NW 1/4													
			SE 1/4 of NW 1/4													
M.M. Thompson			7.3 ac. of Lot 2 7.3 ac. of Lot 2				3	26								
Fred McLaugh			NW 1/4 of SW 1/4													
B. Strayer			SW 1/4 of SW 1/4 Lot 2 less taxes				42.25	208								
A.E. Glenny, J.W. Blough, A.H. Farber			1 acre of Lot 2 1 acre of Lot 2				1	69								
			NE 1/4 of SE 1/4													
			NW 1/4 of SE 1/4													
Metzroth Clothing Co.			8.537.4' of Lot 3 8.537.4' of Lot 3				13.16	56								
Sarah L. Carpenter			8.200' of Lot 3 8.200' of Lot 3				1.34	184								
Lily Westfall			7.377.9' of 8.1512.6' of Lot 3 (approx. 8 acres)				8	40								
							90.75	1022								

Cass County, Minnesota, for Taxes for the Year 1932

Ditch No.	Ditch No.	Ditch No.	Ditch No.	TOTAL TAXES	PAID	WHEN PAID	Number of Receipt	March Settlement	June Settlement	Penalty	November Settlement	Penalty	Collections to First Monday in January	Penalty	Delinquent on First Monday in January	REMARKS	
																	\$
				95	1										1.04	95.09	
				616	3	PAID IN FULL	OCT 31 1933	64.34							616	22	
				3162	4	PAID IN FULL	APR 11 1933	23.33							3162		
				1303	7	2nd Half Paid PAID IN FULL	OCT 31 1933 MAY 30 1933	33.50							651	652	
				308	11										3.37	308.29	
				2463	13	2nd Half Paid 1st Half Paid	OCT 11 1933 MAY - 8 1933	60.37 28.06							1231	1232	
				817	15	PAID IN FULL	MAR 27 1933	19.11							817		
				663	18	PAID IN FULL	MAY 10 1933	28.29							663		
				2203	19										24.09	22.03	2.06
				474	20												
				12104				817	59.07					25.00			

Tax List of Real Property in the Town of Ponto Lake

IN WHOSE NAME ASSESSED	TO WHOM TRANSFERRED	Sold for Taxes	SUB-DIVISION	Sec. or Lot	Town or Block	No. of Acres		VALUATION	No. School Dist.	GENERAL TAXES	School District	School District	School District	
						Reg.	100's				No. Rate	No. Rate	No. Rate	
										Mills	Mills	Mills		
										Dollars	cts.	\$ cts.	\$ cts.	cts.
Fred McLaugh			NE 1/4 of NE 1/4	32	139	29	40	123						
Michael Smith			NW 1/4 of NE 1/4				40	46						
"			SW 1/4 of NE 1/4				40	98						
Red River Lbr. Co.			SE 1/4 of NE 1/4 Lot 2				33	25	102					
Michael Smith			NE 1/4 of NW 1/4				40	101						
S.D. Drake			NW 1/4 of NW 1/4 (Lot 1, 2, 3, 4, 5, 6, 7, 8, 9, 10, 11, 12, 13, 14, 15, 16, 17, 18, 19, 20, 21, 22, 23, 24, 25, 26, 27, 28, 29, 30, 31, 32, 33, 34, 35, 36, 37, 38, 39, 40, 41, 42, 43, 44, 45, 46, 47, 48, 49, 50, 51, 52, 53, 54, 55, 56, 57, 58, 59, 60, 61, 62, 63, 64, 65, 66, 67, 68, 69, 70, 71, 72, 73, 74, 75, 76, 77, 78, 79, 80, 81, 82, 83, 84, 85, 86, 87, 88, 89, 90, 91, 92, 93, 94, 95, 96, 97, 98, 99, 100, 101, 102, 103, 104, 105, 106, 107, 108, 109, 110, 111, 112, 113, 114, 115, 116, 117, 118, 119, 120, 121, 122, 123, 124, 125, 126, 127, 128, 129, 130, 131, 132, 133, 134, 135, 136, 137, 138, 139, 140, 141, 142, 143, 144, 145, 146, 147, 148, 149, 150, 151, 152, 153, 154, 155, 156, 157, 158, 159, 160, 161, 162, 163, 164, 165, 166, 167, 168, 169, 170, 171, 172, 173, 174, 175, 176, 177, 178, 179, 180, 181, 182, 183, 184, 185, 186, 187, 188, 189, 190, 191, 192, 193, 194, 195, 196, 197, 198, 199, 200, 201, 202, 203, 204, 205, 206, 207, 208, 209, 210, 211, 212, 213, 214, 215, 216, 217, 218, 219, 220, 221, 222, 223, 224, 225, 226, 227, 228, 229, 230, 231, 232, 233, 234, 235, 236, 237, 238, 239, 240, 241, 242, 243, 244, 245, 246, 247, 248, 249, 250, 251, 252, 253, 254, 255, 256, 257, 258, 259, 260, 261, 262, 263, 264, 265, 266, 267, 268, 269, 270, 271, 272, 273, 274, 275, 276, 277, 278, 279, 280, 281, 282, 283, 284, 285, 286, 287, 288, 289, 290, 291, 292, 293, 294, 295, 296, 297, 298, 299, 300, 301, 302, 303, 304, 305, 306, 307, 308, 309, 310, 311, 312, 313, 314, 315, 316, 317, 318, 319, 320, 321, 322, 323, 324, 325, 326, 327, 328, 329, 330, 331, 332, 333, 334, 335, 336, 337, 338, 339, 340, 341, 342, 343, 344, 345, 346, 347, 348, 349, 350, 351, 352, 353, 354, 355, 356, 357, 358, 359, 360, 361, 362, 363, 364, 365, 366, 367, 368, 369, 370, 371, 372, 373, 374, 375, 376, 377, 378, 379, 380, 381, 382, 383, 384, 385, 386, 387, 388, 389, 390, 391, 392, 393, 394, 395, 396, 397, 398, 399, 400, 401, 402, 403, 404, 405, 406, 407, 408, 409, 410, 411, 412, 413, 414, 415, 416, 417, 418, 419, 420, 421, 422, 423, 424, 425, 426, 427, 428, 429, 430, 431, 432, 433, 434, 435, 436, 437, 438, 439, 440, 441, 442, 443, 444, 445, 446, 447, 448, 449, 450, 451, 452, 453, 454, 455, 456, 457, 458, 459, 460, 461, 462, 463, 464, 465, 466, 467, 468, 469, 470, 471, 472, 473, 474, 475, 476, 477, 478, 479, 480, 481, 482, 483, 484, 485, 486, 487, 488, 489, 490, 491, 492, 493, 494, 495, 496, 497, 498, 499, 500, 501, 502, 503, 504, 505, 506, 507, 508, 509, 510, 511, 512, 513, 514, 515, 516, 517, 518, 519, 520, 521, 522, 523, 524, 525, 526, 527, 528, 529, 530, 531, 532, 533, 534, 535, 536, 537, 538, 539, 540, 541, 542, 543, 544, 545, 546, 547, 548, 549, 550, 551, 552, 553, 554, 555, 556, 557, 558, 559, 560, 561, 562, 563, 564, 565, 566, 567, 568, 569, 570, 571, 572, 573, 574, 575, 576, 577, 578, 579, 580, 581, 582, 583, 584, 585, 586, 587, 588, 589, 590, 591, 592, 593, 594, 595, 596, 597, 598, 599, 600, 601, 602, 603, 604, 605, 606, 607, 608, 609, 610, 611, 612, 613, 614, 615, 616, 617, 618, 619, 620, 621, 622, 623, 624, 625, 626, 627, 628, 629, 630, 631, 632, 633, 634, 635, 636, 637, 638, 639, 640, 641, 642, 643, 644, 645, 646, 647, 648, 649, 650, 651, 652, 653, 654, 655, 656, 657, 658, 659, 660, 661, 662, 663, 664, 665, 666, 667, 668, 669, 670, 671, 672, 673, 674, 675, 676, 677, 678, 679, 680, 681, 682, 683, 684, 685, 686, 687, 688, 689, 690, 691, 692, 693, 694, 695, 696, 697, 698, 699, 700, 701, 702, 703, 704, 705, 706, 707, 708, 709, 710, 711, 712, 713, 714, 715, 716, 717, 718, 719, 720, 721, 722, 723, 724, 725, 726, 727, 728, 729, 730, 731, 732, 733, 734, 735, 736, 737, 738, 739, 740, 741, 742, 743, 744, 745, 746, 747, 748, 749, 750, 751, 752, 753, 754, 755, 756, 757, 758, 759, 760, 761, 762, 763, 764, 765, 766, 767, 768, 769, 770, 771, 772, 773, 774, 775, 776, 777, 778, 779, 780, 781, 782, 783, 784, 785, 786, 787, 788, 789, 790, 791, 792, 793, 794, 795, 796, 797, 798, 799, 800, 801, 802, 803, 804, 805, 806, 807, 808, 809, 810, 811, 812, 813, 814, 815, 816, 817, 818, 819, 820, 821, 822, 823, 824, 825, 826, 827, 828, 829, 830, 831, 832, 833, 834, 835, 836, 837, 838, 839, 840, 841, 842, 843, 844, 845, 846, 847, 848, 849, 850, 851, 852, 853, 854, 855, 856, 857, 858, 859, 860, 861, 862, 863, 864, 865, 866, 867, 868, 869, 870, 871, 872, 873, 874, 875, 876, 877, 878, 879, 880, 881, 882, 883, 884, 885, 886, 887, 888, 889, 890, 891, 892, 893, 894, 895, 896, 897, 898, 899, 900, 901, 902, 903, 904, 905, 906, 907, 908, 909, 910, 911, 912, 913, 914, 915, 916, 917, 918, 919, 920, 921, 922, 923, 924, 925, 926, 927, 928, 929, 930, 931, 932, 933, 934, 935, 936, 937, 938, 939, 940, 941, 942, 943, 944, 945, 946, 947, 948, 949, 950, 951, 952, 953, 954, 955, 956, 957, 958, 959, 960, 961, 962, 963, 964, 965, 966, 967, 968, 969, 970, 971, 972, 973, 974, 975, 976, 977, 978, 979, 980, 981, 982, 983, 984, 985, 986, 987, 988, 989, 990, 991, 992, 993, 994, 995, 996, 997, 998, 999, 1000											
Michael Smith			SW 1/4 of NW 1/4				40	31						
Carl H. Olson			SE 1/4 of NW 1/4				40	77						
"			NE 1/4 of SW 1/4				40	129						
J.B. Hebster			NW 1/4 of SW 1/4				40	123						
Carl H. Olson			SW 1/4 of SW 1/4				40	141						
"			SE 1/4 of SW 1/4				40	141						
James Westfall			NE 1/4 of SE 1/4 Lot 3				14	60	45					
G.J. Marsh			NW 1/4 of SE 1/4				40	123						
James Westfall			SW 1/4 of SE 1/4				40	123						
"			SE 1/4 of SE 1/4 " 4				35	55	160					
								584	70	1629				

Cass County, Minnesota, for Taxes for the Year 1932

Ditch No.	Ditch No.	Ditch No.	Ditch No.	TOTAL TAXES	PAID	WHEN PAID	Number Receipt	March Settlement	June Settlement	Penalty	November Settlement	Penalty	Collections to First Monday in January	Penalty	Delinquent on First Monday in January	REMARKS	
																	\$
				1457	2nd Half Paid	OCT 1 1 1933	6037										
				545	1st Half Paid	MAY 8 1933	3806			729		728					
				1161	DEL. 1st Half Paid	MAY 31 1933	3758			853			298	273	.25		
				1208	DEL. 1st Half Paid	MAY 31 1933	1169						634	580	.54		
					DEL.	5 17 1934	1705						1322	1208	1.13		
				1196	DEL. 1st Half Paid	MAY 31 1933	3750			598			684	598	.56		
				782													
				367	DEL. 1st Half Paid	MAY 31 1933	3750			184			200	183	.17		
				912	PAID IN FULL	OCT 31 1933	6441					659				Discount	
				1528	PAID IN FULL	OCT 31 1933	6442					1528	53				
				1457											1593	1457	1.36
				1670	PAID IN FULL	OCT 31 1933	6442					3340	117				
				1670	PAID IN FULL	OCT 31 1933											
				533													
				1457	PAID IN FULL	AUG - 8 1933	5485					1457	19				
				1457													
				1895													
				19295						2364		7710					

Tax List of Real Property in the Town of Ponto Lake

IN WHOSE NAME ASSESSED	TO WHOM TRANSFERRED	Sold for Taxes	SUB-DIVISION	Sec. or Lot	Town or Block	No. of Acres		VALUATION	No. School Dist.	GENERAL TAXES	School District	School District	School District
						Rate	Rate				Rate		
Metzroth Clothing Co., Inc.			NE 1/4 of NE 1/4 Lot 1			33	139	29	38			148	
Evert Hall			NW 1/4 of NE 1/4										
Frank R. Anderson			SW 1/4 of NE 1/4 Lot 2 use of road thru Lot 1			21	80					67	
Hazel Johnson			SE 1/4 of NE 1/4			40						123	
A. O. Boehm			N 1/2 Lot 2 use of road over Lot 1			21	80					67	
Ernest Siltman			E 1/2 SW 1/4 of NW 1/4 Lot 3 less 2 acres			47	20					168	
"			NW 1/4 of NW 1/4			40						123	
"			SW 1/4 of NW 1/4 " 4			19	10					58	
M. & N. Northby, A.E. Glenn, G.W. Berber			SW 1/4 of NW 1/4										
Mrs. Crownover, S.P. Glenn, G.W. Berber, Wm. Adams			2 acres of Lot 3			2						83	
Farmer's State Bk., Pine River			NE 1/4 of SW 1/4 Lot 5			32	55					100	
Thomas L. Pinkney			NW 1/4 of SW 1/4										
Farmer's St. Bk., Pine River			SW 1/4 of SW 1/4 " 6			29	50					103	
"			SE 1/4 of SW 1/4			40						135	
"			NE 1/4 of SE 1/4			40						129	
Leslie Shepard			NW 1/4 of SE 1/4			40						117	
"			SW 1/4 of SE 1/4			40						140	
Farmer's St. Bk., Pine River			SE 1/4 of SE 1/4			40						123	
						491	95					1788	

Cass County, Minnesota, for Taxes for the Year 1932

Ditch No.	Ditch No.	Ditch No.	Ditch No.	TOTAL TAXES	PAID	WHEN PAID	Number of Receipt	March Settlement	June Settlement	Penalty	November Settlement	Penalty	Collections to First Monday in January	Penalty	Delinquent on First Monday in January	REMARKS	
																	\$
				1753		Balance Paid May 31 1932 3902 ✓ Part Paid May 10 1932 2829 ✓										450 ✓ 1303 ✓	450 balance.
				793	3	PAID IN FULL MAY 8 1 1932										4120 ✓ 793 ✓	
				1457	4												
				2025	5	PAID IN FULL MAY 23 1932										2998 ✓ 2025 ✓	12 32 Ref 1/27/32 1/50 2/33 Abatement No. 2101
				1990	6	PAID IN FULL MAY 8 1 1932										3838 ✓ 1990 ✓	
				1457	7												1593 1457 1.36
				687	8												751 687 .64
				983	10	PAID IN FULL MAR 27 1932										1911 ✓ 983 ✓	
				1184	11												
				1220	13												1334 1220 1.14
				1599	14												
				1528	16												
				1386	17	PAID IN FULL DEC 4 1932											3044 243
				1658	18	PAID IN FULL DEC 4 1932											
				1457	19												
					20												
				21177												983 6561	3044

Tax List of Real Property in the Town of Ponto Lake

IN WHOSE NAME ASSESSED	TO WHOM TRANSFERRED	Sold for Taxes	SUB-DIVISION	Sec. or Lot	Town or Block	No. of Acres		VALUATION	No. School Dist.	GENERAL TAXES	School District	School District	School District
						Rate	Rate				Rate		
Emma A. Ruedy			<i>Kinne Camp</i>	1				65					
"				2				9					
Anna H. Huff				3				28					
Willie B. Combs & Nancy Lou Combs				4				58					
Fred J. Kluter				5				52					
Edith L. Null				6				58					
Lloyd Paul				7				9					
"				8				9					
Josephine Black				9				52					
Calvin P. Corbett & Pearl Corbett				10				9					
Calvin P. Corbett				11				102					
W. A. Marienaw				12				52					
Lloyd Paul				13				9					
"				14				9					
W. LaMont Kaufman & int, Geo. Miller & M. Mitchell & int.				15				68					
Mary D. Miller				16				52					
Desley D. Hiler & Mary R. Miller				17				62					
Lloyd Paul				18				9					
				19									
				20									

702

Cass County, Minnesota, for Taxes for the Year 1932

Ditch No.	Ditch No.	Ditch No.	Ditch No.	TOTAL TAXES	PAID	WHEN PAID	Number of Receipt	March Settlement	June Settlement	Penalty	November Settlement	Penalty	Collections to First Monday in January	Penalty	Delinquent on First Monday in January	REMARKS
				770	1	PAID IN FULL	FEB 25 1933	934	877							
				107	2	PAID IN FULL	FEB 25 1933									
				332	3	PAID IN FULL	FEB 24 1933	866	332							
				687	4	PAID IN FULL	APR 18 1933	5872	687							
				616	5	PAID IN FULL	OCT 31 1933	7007			444					Discount
				687	6	PAID IN FULL	AUG 7 1933	5779			687	17				
				107	7											117 107 10
				107	8											117 107 10
				616	9	PAID IN FULL	OCT 31 1933	7086			616	22				
				107	10	PAID IN FULL	FEB 25 1933	954	1315							
				1208	11	PAID IN FULL	FEB 25 1933									
				616	12											674 616 58
				107	13											117 107 10
				107	14											117 107 10
				805	15											
				616	16	PAID IN FULL	AUG 17 1933	5546			616	15				
				616	17	PAID IN FULL	AUG 17 1933	5547			616	15				
				107	18											117 107 10
					19											
					20											

8318

2524 687 2979

Tax List of Real Property in the Town of Ponto Lake

IN WHOSE NAME ASSESSED	TO WHOM TRANSFERRED	Sold for Taxes	SUB-DIVISION	Sec. or Lot	Town or Block	No. of Acres		VALUATION	No. School Dist.	GENERAL TAXES	School District	School District	School District			
						Rate	Rate				Rate					
			Ponto Point													
			Lots 974, Sec. 9-139-29					Dollars		cts.	\$	cts.	\$	cts.	\$	cts.
Geo. J. Schottler				1	1			9								
"				2				9								
"				3				9								
"				4				9								
"				5				9								
"				6				9								
"				7				9								
"				8				9								
	Katie Miller			9	1 2			52								
"				10	2			9								
"				11	3			9								
"				12	4			9								
"				13	5			9								
"				14	6			9								
"				15	7			9								
"				16	8			9								
"				17	9			9								
"				18	10			9								
"				19	11			9								
"				20	12			9								
								228								

Cass County, Minnesota, for Taxes for the Year 1932

Ditch No.	Ditch No.	Ditch No.	Ditch No.	TOTAL TAXES	PAID	WHEN PAID	Number of Receipt	March Settlement	June Settlement	Penalty	November Settlement	Penalty	Collections to First Monday in January	Penalty	Delinquent on First Monday in January	REMARKS		
																	\$	cts.
				Dollars	cts.	Month	Day	Year	\$	cts.	\$	cts.	\$	cts.	\$	cts.	\$	cts.
				107	1	PAID IN FULL	MAY	31	1933									
				107	2	PAID IN FULL	MAY	31	1933									
				107	3	PAID IN FULL	MAY	31	1933									
				107	4	PAID IN FULL	MAY	31	1933	4294	✓		856	✓				
				107	5	PAID IN FULL	MAY	31	1933									
				107	6	PAID IN FULL	MAY	31	1933									
				107	7	PAID IN FULL	MAY	31	1933									
				107	8	PAID IN FULL	MAY	31	1933									
				616	9	PAID IN FULL	MAY	31	1933	4294	✓		616	✓				
				107	10	PAID IN FULL	MAY	31	1933									
				107	11	PAID IN FULL	MAY	31	1933									
				107	12	PAID IN FULL	MAY	31	1933									
				107	13	PAID IN FULL	MAY	31	1933	4294	✓		2328	✓				
				107	14	PAID IN FULL	MAY	31	1933									
				107	15	PAID IN FULL	MAY	31	1933									
				107	16	PAID IN FULL	MAY	31	1933									
				107	17	PAID IN FULL	MAY	31	1933									
				107	18	PAID IN FULL	MAY	31	1933									
				107	19	PAID IN FULL	MAY	31	1933									
				107	20	PAID IN FULL	MAY	31	1933									
				2649													38.00	

Tax List of Real Property in the Town of Ponto Lake

IN WHOSE NAME ASSESSED	TO WHOM TRANSFERRED	Sold for Taxes	SUB-DIVISION	Sec. or Lot	Town or Block	No. of Acres		VALUATION	No. School Dist.	GENERAL TAXES	School District	School District	School District
						Rng.	Acres				100's	No. Rate	No. Rate
			Ponto Point										
			Lots 3 & 4, Sec. 9-139-29					Dollars		cts.	\$	cts.	
Geo. J. Schottler				1	13 2			9					
"				2	14			9					
"				3	15			9					
"				4	16			9					
"				5	17			9					
"				6	18			52					
			Out Lot A.	7				9					
				8									
				9									
				10									
				11									
				12									
				13									
				14									
				15									
				16									
				17									
				18									
				19									
				20									

106

Cass County, Minnesota, for Taxes for the Year 1932

Ditch No.	Ditch No.	Ditch No.	Ditch No.	TOTAL TAXES	PAID	WHEN PAID	Number of Receipt	March Settlement	June Settlement	Penalty	November Settlement	Penalty	Collections to First Monday in January	Penalty	Delinquent on First Monday in January	REMARKS
\$	cts.	\$	cts.	\$	cts.	Month	Day	Year	\$	cts.	\$	cts.	\$	cts.	\$	cts.
				107	1	PAID IN FULL	MAY	3	1932							
				107	2	PAID IN FULL	MAY	3	1932							
				107	3	PAID IN FULL	MAY	3	1932							4294 ✓
				107	4	PAID IN FULL	MAY	3	1932							
				107	5	PAID IN FULL	MAY	3	1932							
				616	6	PAID IN FULL	MAY	3	1932							
				107	7	PAID IN FULL	MAY	3	1932							4294 ✓ 107 ✓
				8												
				9												
				10												
				11												
				12												
				13												
				14												
				15												
				16												
				17												
				18												
				19												
				20												

1258

107

Tax List of Real Property in the Town of Ponto Lake

IN WHOSE NAME ASSESSED	TO WHOM TRANSFERRED	Sold for Taxes	SUB-DIVISION	Sec. or Lot	Town or Block	No. of Acres		VALUATION	No. School Dist.	GENERAL TAXES	School District	School District	School District						
						Reg.	Acres 100's				No. Rate	No. Rate	No. Rate						
											Mills			Mills			Mills		
			<i>Napenee Beach</i>																
			<i>8.4 ac. of Lot 1 - Sec. 32-139-29</i>																
								Dollars		cts.	\$	cts.	\$	cts.	\$	cts.			
<i>S.D. Drake</i>				1				42											
"				2				9											
"				3				9											
<i>Lulu Simpson</i>				4				38											
<i>S.D. Drake</i>				5				9											
<i>Esther Reed McKay</i>				6				76											
<i>S.D. Drake</i>				7				9											
"				8				9											
<i>John A. Brownell</i>				9				58											
<i>S.D. Drake</i>				10				9											
"				11				9											
"				12				9											
"				13				9											
"				14				9											
"				15				9											
"				16				9											
"				17				9											
"				18				9											
"				19				9											
"				20				9											
								327											

Cass County, Minnesota, for Taxes for the Year 1932

Ditch No.	Ditch No.	Ditch No.	Ditch No.	TOTAL TAXES	PAID	WHEN PAID	Number of Receipt	March Settlement	June Settlement	Penalty	November Settlement	Penalty	Collections to First Monday in January		Penalty	Delinquent on First Monday in January		REMARKS		
													\$	cts.		\$	cts.		\$	cts.
				Dollars	cts.	Month	Day	Year	\$	cts.	\$	cts.	\$	cts.	\$	cts.	\$	cts.		
				497	1											5	43	4	99	.46
				107	2											1	17	1	07	.10
				107	3											1	17	1	07	.10
				450	4	PAID IN FULL	APR 19	1933	2581	✓			450	✓						
				107	5											1	17	1	07	.10
				533	6	PAID IN FULL	MAY 31	1933	4350	✓			533	✓						
				107	7											1	17	1	07	.10
				107	8											1	17	1	07	.10
				687	9	PAID IN FULL	FEB 28	1933	1098	✓			687	✓						
				107	10											1	17	1	07	.10
				107	11											1	17	1	07	.10
				107	12											1	17	1	07	.10
				107	13											1	17	1	07	.10
				107	14											1	17	1	07	.10
				107	15											1	17	1	07	.10
				107	16											1	17	1	07	.10
				107	17											1	17	1	07	.10
				107	18											1	17	1	07	.10
				107	19											1	17	1	07	.10
				107	20											1	17	1	07	.10
				3879					687		983									

Tax List of Real Property in the Town of Ponto Lake

IN WHOSE NAME ASSESSED	TO WHOM TRANSFERRED	Sold for Taxes	SUB-DIVISION	Sec. or Lot	Town or Block	No. of Acres		VALUATION	No. School Dist.	GENERAL TAXES	School District	School District	School District
						Rate	Rate				Rate		
			<i>East Shore</i>										
A. A. Uhlig				21				69					
"				22				69					
"				23				69					
Ralph Henry Burwell				24				9					
"				25				9					
A. A. Uhlig				26				69					
"				27				69					
"				28				69					
"				29				69					
"				30				69					
"				31				69					
"				32				69					
"				33				69					
"				34				69					
"				35				69					
"				36				9					
"				37				9					
H. M. Sjerke				38				78					
"				39				9					
								240					

Cass County, Minnesota, for Taxes for the Year 1932

Ditch No.	Ditch No.	Ditch No.	Ditch No.	TOTAL TAXES	PAID	WHEN PAID	Number of Receipt	March Settlement	June Settlement	Penalty	November Settlement	Penalty	Collections to First Monday in January	Penalty	Delinquent on First Monday in January	REMARKS	
																	Dollars
				107													
				107	1											Abatement #2158	
				107	2											As	
				107	3											As	
				107	4	PAID IN FULL		MAY 31 1933		4876 ✓		214 ✓					
				107	5	PAID IN FULL		MAY 31 1933									
				107	6												
				107	7												
				107	8												
				107	9												
				107	10												
				107	11												
				107	12												
				107	13												
				107	14												
				107	15												
				107	16	PAID IN FULL		FEB 16 1933		649 ✓		214 ✓					
				107	17	PAID IN FULL		FEB 16 1933									
				924	18	PAID IN FULL		MAY 31 1933		4370 ✓		1031 ✓					
				107	19	PAID IN FULL		MAY 31 1933									
				20													
				28 50					214 12 45								

