

Assessment & Tax List - 1959
Ponto Lake

Assessment Roll and Tax List of Real Property in the Town of Lons Lake, Cass County, Minnesota, for Taxes for the Year 1959.

Indicate Type of Property: R-Residential, C-Commercial, I-Industrial, U-Utility, F-Farm, L-Lakeshore, T-Timber, M-Mineral

Table with columns: IN WHOSE NAME ASSESSED, TO WHOM TRANSFERRED, DESCRIPTION OF PROPERTY, TRUE AND FULL VALUATIONS, ASSESSED VALUATIONS, VALUATIONS BY SCHOOL DISTRICTS AS EQUALIZED BY DEPARTMENT OF TAXATION, TAXES, PAID, WHEN PAID, Number of Receipt, March Settlement 1960, June Settlement 1960, November Settlement 1960, Collections to First Monday in January 1961, Delinquent on First Monday in January 1961, Total Delinquent Tax and Penalty, REMARKS.

(See continued on next page)

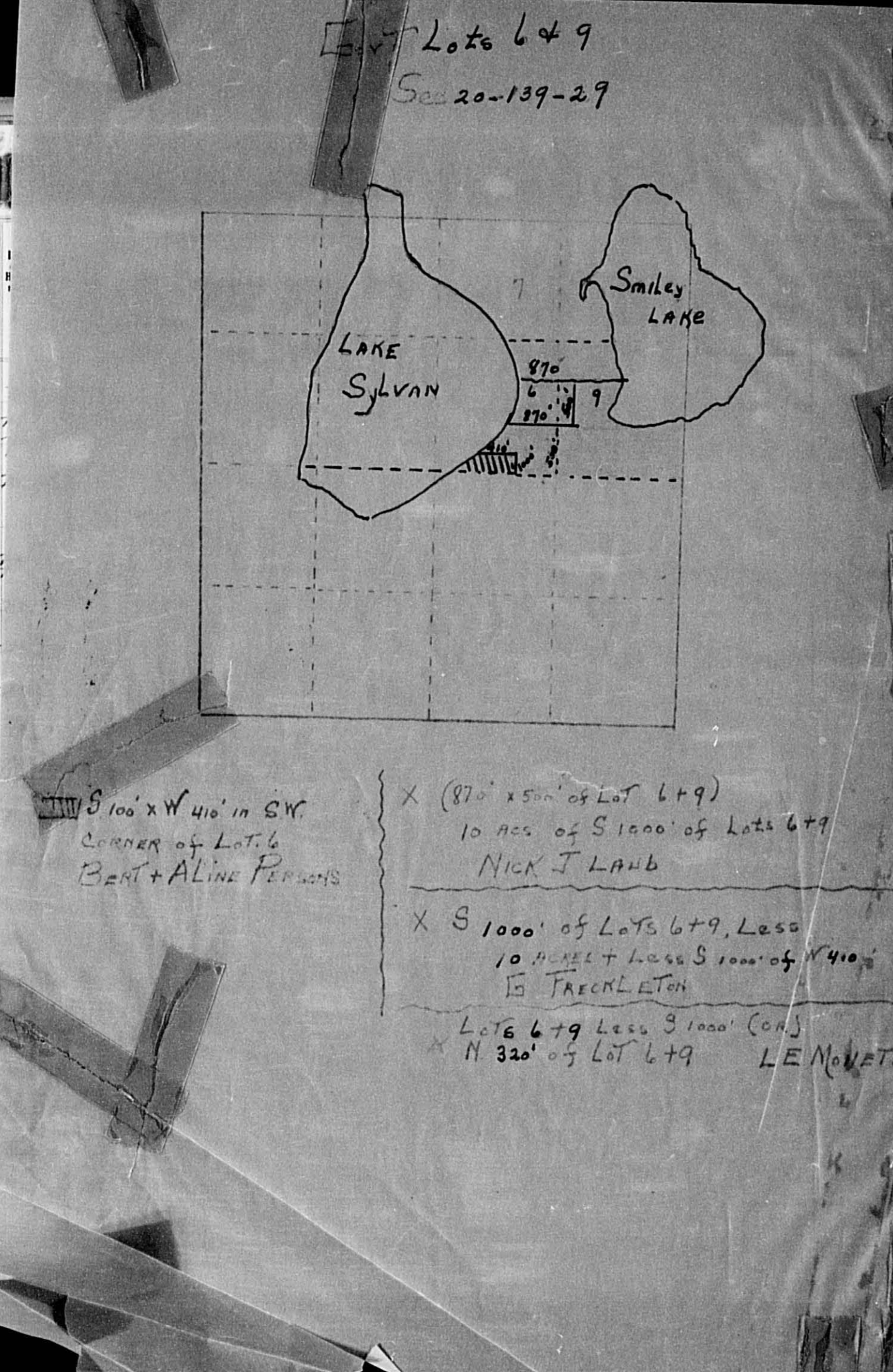
29604

Camp Marquette, Klime Camp, Ponto Point, Japanese Beach, East Shore, Ada Pt.

Form SCD MILLER-DAVIS CO., MINNEAPOLIS

IN WHOSE NAME ASSESSED	TO WHOM TRANSFERRED	SECTION OF PROPERTY				No. School District	
		SUBDIVISION	Sec. of Lot	Town of Block	Reg. No.		
L. Edward + Florence S. Minette		York Lot 8 less road 20' wide running thru entire length of N. W. Boundary	20	139	29	21.90	114
Carl + Sarah V. Brown		N.W. 1/4 of York Lot 7				44.65	
L. Edward + Florence S. Minette		York Lot 6 + 9 less road 100' x 4' less road S.W. 1/4 of N.W. 1/4				6.10	
		SE 1/4 of N.W. 1/4					
Glen F. + Marie Frackleton		S. 100' of York Lot 6 + 9 less 100' x 4' less 100' of S.W. 1/4 of York Lot 6				25	
Alice R. Jackson		N.W. 1/4 of S.W. 1/4 of York Lot 4				286	
H. H. + Ella Stoneback		N.W. 1/4 of York Lot 1 less 4' acc.				46.40	
" " "		S.W. 1/4 of York Lot 2				37.50	
H. P. Longstaff + Mrs. A. R. Miner		S.E. 1/4 of York Lot 4				57.20	
Bert + Alice Persons		S. 100' of York Lot 6					
H. P. Longstaff		N.E. 1/4 of S.W. 1/4 of York Lot 4				1.90	
H. H. + Ella Stoneback		S.W. 1/4 of York Lot 3				37.20	
H. A. Frackleton		S.W. 1/4 of York Lot 1 less 7' 10" for road				39.50	
" " "		S.E. 1/4 of S.W. 1/4 less base				29.50	
H. J. + Ann Mc Chintock		York Lot 4 less 6' 900' + less road				8	
Dora E. De Jarlais		N.E. 1/4 of S.E. 1/4				40	
" " "		N.W. 1/4 of S.E. 1/4					
O. R. Berabee		S.W. 1/4 of S.E. 1/4				40	
" " "		S.E. 1/4 of S.E. 1/4				40	
Nick J. + Elizabeth S. Laub		10 acs of S. 100' of York Lot 6 + 9				10	

(See 20, continued on next page) 435 23



S 100' x W 410' in SW CORNER of Lot 6
BERT + ALICE PERSONS

X (870' x 500' of Lot 6 + 9)
10 acs of S 1000' of Lots 6 + 9
NICK J LAUB

X S 1000' of Lots 6 + 9, Less
10 ACRES + Less S 1000' of N 410'
IS FRACKLETON

Lots 6 + 9 Less S 1000' (cont.)
N 320' of Lot 6 + 9
LE NOVETT

Cass County, Minnesota, for Taxes for the Year 1959.

SOLD FOR TAXES	VALUATIONS BY SCHOOL DISTRICTS AS EQUALIZED BY DEPARTMENT OF TAXATION	Tax including State Homestead	State Tax on Non-Homestead	SPECIAL TAXES	TOTAL TAXES	PAID	WHEN PAID	Number of Receipt	March Settlement 1960	June Settlement 1960	Penalty	November Settlement 1960	Penalty	Collections to First Monday in January 1961	Penalty	Delinquent on First Monday in January 1961	Total Delinquent Tax and Penalty	REMARKS	
																			District No. Rate
1	92	H 121	2306	58	2364	1	2nd HALF PAID DEC 30 1960	17879											
2		H 66	5156	42	5198	2	1st Half Paid MAY 31 1960	9488		1182				1182					pen due 8804 4
3	13		326	8	334	3	2nd Half Paid OCT 31 1960	15461											
4						4	1st Half Paid MAY 31 1960	9529		2599		2599							8921 8
5		216	5956	134	6090	5	2nd HALF PAID OCT 5 1960	14812											
6		H 54	1488		1488	6	1st Half Paid MAY 31 1960	9528		3045		3045							8920
7	H 66		1654		1654	7	PAID IN FULL MAY 13 1960	7713		1488									8922
8	H 214		5366		5366	8	PAID IN FULL MAY 13 1960	7728		1654									8921 7
9		30	828	18	846	9	PAID IN FULL MAY 13 1960	7713		5366									8922
10		40	1102	24	1126	10				846									11 26 x 12 39 8919
11		17	468	10	478	11	PAID IN FULL MAY 13 1960	7713		478									8923
12	H 30		752		752	12	2nd HALF PAID MAY 13 1960	7728		752									8921
13	89		2232	56	2288	13	1st Half Paid MAY 27 1960	9091		1144		1144							8922
14		75	2068	46	2114	14	2nd HALF PAID AUG 1 2 1960	11629		1057		1057							
15	H 86	22	2978	14	2992	15	1st Half Paid MAY 27 1960												
16	H 75		1880		1880	16	PAID IN FULL FEB 29 1960	2147	2992										7276
17						17	PAID IN FULL MAY 31 1960	9500		1880									8923
18		54	1488	34	1522	18	PAID IN FULL MAY 16 1960			1522									8922
19		74	2040	46	2086	19	PAID IN FULL MAY 16 1960			2086									
20		145	3998	90	4088	20	PAID IN FULL MAY 31 1960	9527		4088									8918
	H 385	H 261: 646	27570																
	194	739: 933	14516	580	42666														
	579	1000: 7579	42086																

29 92 298 54 78 45 13 49 11 26

Assessment Roll and Tax List of Real Property in the Sumner of South Dakota

Indicate Type of Property: R-Residential, C-Commercial, I-Industrial, U-Utility, F-Farm, L-Lakeshore, T-Timber, M-Mineral

Form SCD 11-15-59

Table with columns: IN WHOSE NAME ASSESSED, TO WHOM TRANSFERRED, DESCRIPTION OF PROPERTY, TRUE AND FULL VALUATIONS, ASSESSED VALUATIONS, and FINAL EQUALIZED VALUE. Includes entries for James A. & Sylvia B. Fullerton, Clayton C. & Ada O. Peterson, Daniel M. & Angelina M. Doolittle, etc.

Cass County, Minnesota, for Taxes for the Year 1959.

Table with columns: SOLD FOR TAXES, VALUATIONS BY SCHOOL DISTRICTS AS EQUALIZED BY DEPARTMENT OF TAXATION, Tax including State Homestead, State Tax on Non-Homestead, SPECIAL TAXES, TOTAL TAXES, PAID, WHEN PAID, Number of Receipt, March Settlement 1960, June Settlement 1960, Penalty, November Settlement 1960, Collections to First Monday in January 1961, Delinquent on First Monday in January 1961, Total Delinquent Tax and Penalty, and REMARKS. Includes entries for 1-20 with tax amounts and payment dates.

Assessment Roll and Tax List of Real Property in the Town of Santa Lake

* Indicate Type of Property: R-Residential, C-Commercial, I-Industrial, U-Utility, F-Farm, L-Lakeshore, T-Timber, M-Mineral

Form 50 MILLER-DAVIS CO., MINNEAPOLIS

Table with columns: IN WHOSE NAME ASSESSED, TO WHOM TRANSFERRED, SUBDIVISION, DESCRIPTION OF PROPERTY, TRUE AND FULL VALUATIONS, ASSESSED VALUATIONS, FINAL EQUALIZED VALUE. Includes handwritten entries for Ada Pine Beach and various property owners like Mary Ann Henselin.

Cass County, Minnesota, for Taxes for the Year 1959.

Table with columns: SOLD FOR TAXES, VALUATIONS BY SCHOOL DISTRICTS AS EQUALIZED BY DEPARTMENT OF TAXATION, Tax including State Homestead, SPECIAL TAXES, TOTAL TAXES, PAID, WHEN PAID, Number of Receipt, March Settlement, June Settlement, November Settlement, Collections to First Monday in January 1961, Delinquent on First Monday in January 1961, Total Delinquent Tax and Penalty, REMARKS. Includes handwritten entries for balance paid and various tax amounts.

Camp Blanche, Kinne Camp, Fonto Point, Naprase Beach, East Shore, Ada Pine Beach

Fonto North Shore, Snodgrass 1st Add'n, Snodgrass 2nd Add'n, Lesher's Lake Ada

Assessment Roll and Tax List of Real Property in the Town of Lonto Lake

Form 5C MILLER-DAVIS CO., MINNEAPOLIS

Indicate Type of Property: R-Residential, C-Commercial, I-Industrial, U-Utility, F-Farm, L-Lakeshore, T-Timber, M-Mineral

Table with columns: IN WHOSE NAME ASSESSED, TO WHOM TRANSFERRED, DESCRIPTION OF PROPERTY, TRUE AND FULL VALUATIONS, ASSESSED VALUATIONS, FINAL EQUALIZED VALUE. Includes handwritten entries for Howard W. Paulson and Otto B. Griffin.

Cass County, Minnesota, for Taxes for the Year 1959.

Table with columns: VALUATIONS BY SCHOOL DISTRICTS AS EQUALIZED BY DEPARTMENT OF TAXATION, Tax including State Homestead, State Tax on Non-Homestead, SPECIAL TAXES, TOTAL TAXES, PAID, WHEN PAID, Number of Receipt, March Settlement 1960, June Settlement 1960, Penalty, November Settlement 1960, Penalty, Collections to First Monday in January 1961, Delinquent on First Monday in January 1961, Total Delinquent Tax and Penalty, REMARKS. Includes handwritten entries for payments and taxes.

Handwritten summary totals: # 18, 88, 106, 2924, 54, 2978, 2872, 332.

Vertical text on the left edge of the page: Shady Wood Shores, Snodgrass 1st Add'n, Snodgrass 2nd Add'n, Leshner's Lake Ada, Ada Pine.

Vertical text on the right edge of the page: Helen's Haven, Boehm's South Shore, Apts.

