

ASSESSMENT & TAX LIST  
Ponto Lake  
1953







Assessment of

COLLECTIONS OF TAXES OF 1953 *Town* OF *Ponte Lake*, CASS COUNTY, MINNESOTA

Form 314

NAME OF OWNER

FUNDS	MARCH SETTLEMENT 1954	JUNE SETTLEMENT 1954	NOV. SETTLEMENT 1954	Amount Collected from Nov. 1954 to First Monday in Jan. 1955	REDUCTIONS	Total Reductions and Collected	BALANCE UNCOLLECTED	ADDITIONS	Total Uncollected to First Monday in January, 1955
State--Non-Homestead,	4222	6513	2643						
State--Homestead,	5102	12506	5856	57					
County Revenue,	27348	67028	27101	306					
County Road and Bridge,	15365	37659	15227	172					
County Welfare,	48820	119656	48380	546					
County Bond and Interest,	10330	25319	10237	115					
<i>R. &amp; B. Sinking</i>	1933	4737	1915	22					
Town Revenue,	6378	15632	6320	71					
Town Road and Bridge,	5798	14211	5746	65					
Town Drag,	966	2368	958	11					
Town State Loan,									
<i>Fire</i>	4832	11842	4788	54					
<i>Telephone</i>	4832	11842	4788	54					
School Local 1 Mill,	966	2368	958	11					
School Special,	44994	77944	33216	268					
School State Loan,									
Deficiency	68417	167687	67801	765					
Tuition									
Transportation	1933	4737	1915	22					
	252236	582057	237049	2539					

	SCHOOL DISTRICT NO.	LOCAL 1 MILL	SPECIAL	STATE LOAN	Deficiency	Transport.	TOTALS
MARCH SETTLEMENT	<i>Q#30</i> <i>R#30</i>	133 833	3323 41671		9411 59006	266 1667	13133 103177
JUNE SETTLEMENT	<i>Q#30</i> <i>R#30</i>	966 1619 747	44994 40480 37464		68417 114639 53050	1933 3238 1499	116310 159976 92762
NOVEMBER SETTLEMENT	<i>Q#30</i> <i>R#30</i>	2368 587 371	77944 14668 18548		167687 41539 26262	4737 1173 742	252738 57967 45923
NOVEMBER to JANUARY	<i>Q#30</i>	958 11	33216 268		67801 765	1915 22	103890 1066
ADDITIONS		11	268		765	22	1066
REDUCTIONS							

CAMP BLANCHÉ  
Kinno Camp  
Ponte Lake  
Napene Beach  
Plat of East Shore Pine Beach Park

Assessment Roll and Tax List of Real Property in the town of Ponto Lake

Cass County, Minnesota, for Taxes for the Year 1953.

Form SCD (53) JULY 1950

IN WHOSE NAME ASSESSED	TO WHOM TRANSFERRED	DESCRIPTION OF PROPERTY				TRUE AND FULL VALUATIONS										FINAL EQUALIZED VALUE	
		SUBDIVISION	Sec. or Lot	Town or Block	Reg.	Number of Acres of Land	Machinery Permanently Attached to Real Estate	RURAL				ALL OTHER		Machinery Permanently Attached to Real Estate	TOTAL ASSESSED VALUE		Total Assessed Value as Equalized by the Board of Review
								Acres	100ths	Homestead Up to \$4,000 20%	Over \$4,000 and Non-Homestead 33 1/3%	Homestead Up to \$4,000 25%	Over \$4,000 and Non-Homestead 40%				
Mary P. Underwood	Theodore A. Miller	NE 1/4 of NE 1/4	139	29		3950											
"	"	NW 1/4 of NE 1/4				3850											
"	"	SW 1/4 of NE 1/4				40											
"	"	SE 1/4 of NE 1/4				40											
"	Theodore A. Miller	NE 1/4 of NW 1/4 Lot 3				3750											
"	"	NW 1/4 of NW 1/4 Lot 4				3650											
"	"	SW 1/4 of NW 1/4				40											
"	"	SE 1/4 of NW 1/4 Lot 5				3975											
State of Minnesota		NE 1/4 of SW 1/4 Lot 7															
Mary P. Underwood	State of Minnesota	NW 1/4 of SW 1/4 Lot 6				21											
"	"	SW 1/4 of SW 1/4 Lot 8															
"	"	SE 1/4 of SW 1/4															
State of Minnesota		NE 1/4 of SE 1/4															
State of Minnesota		NW 1/4 of SE 1/4															
State of Minnesota		SW 1/4 of SE 1/4															
State of Minnesota		SE 1/4 of SE 1/4															

330 75

SOLD FOR TAXES	VALUATIONS BY SCHOOL DISTRICTS AS EQUALIZED BY DEPARTMENT OF TAXATION						Tax Including State Homestead	State Tax on Non-Homestead	SPECIAL TAXES	TOTAL TAXES	PAID	WHEN PAID	Number of Receipt	March Settlement 1954	June Settlement 1954	November Settlement 1954	Penalty	Collections to First Monday in January 1955	Penalty	Delinquent on First Monday in January 1955	Total Delinquent Tax and Penalty	REMARKS
	District No.	District No.	District No.	District No.	District No.	District No.																
	Rate	Rate	Rate	Rate	Rate	Rate																
1	H 36						846		846		1st Half Paid OCT 30 1954											
2	H 36						846		846		1st Half Paid MAY 27 1954											
3	H 32						752		752		2nd Half Paid OCT 30 1954											
4	H 32						752		752		1st Half Paid MAY 27 1954											
5											2nd Half Paid OCT 30 1954											
6	H 32						752		752		1st Half Paid MAY 27 1954											
7	H 30						706		706		2nd Half Paid OCT 30 1954											
8	H 32						752		752		1st Half Paid MAY 27 1954											
9	H 40						940		940		2nd Half Paid OCT 30 1954											
10																						
11																						
12	H 55						1292		1292		1st Half Paid MAY 27 1954											
13											2nd Half Paid OCT 30 1954											
14																						
15																						
16																						
17																						
18																						
19																						
20																						

H 325

7638

7638

3819

3819

CAMP BLANCHET  
Kline Camp  
Ponto Point  
Japanese Beach  
Flat of East Shore Pine Beach











Long Lake

Lost 9

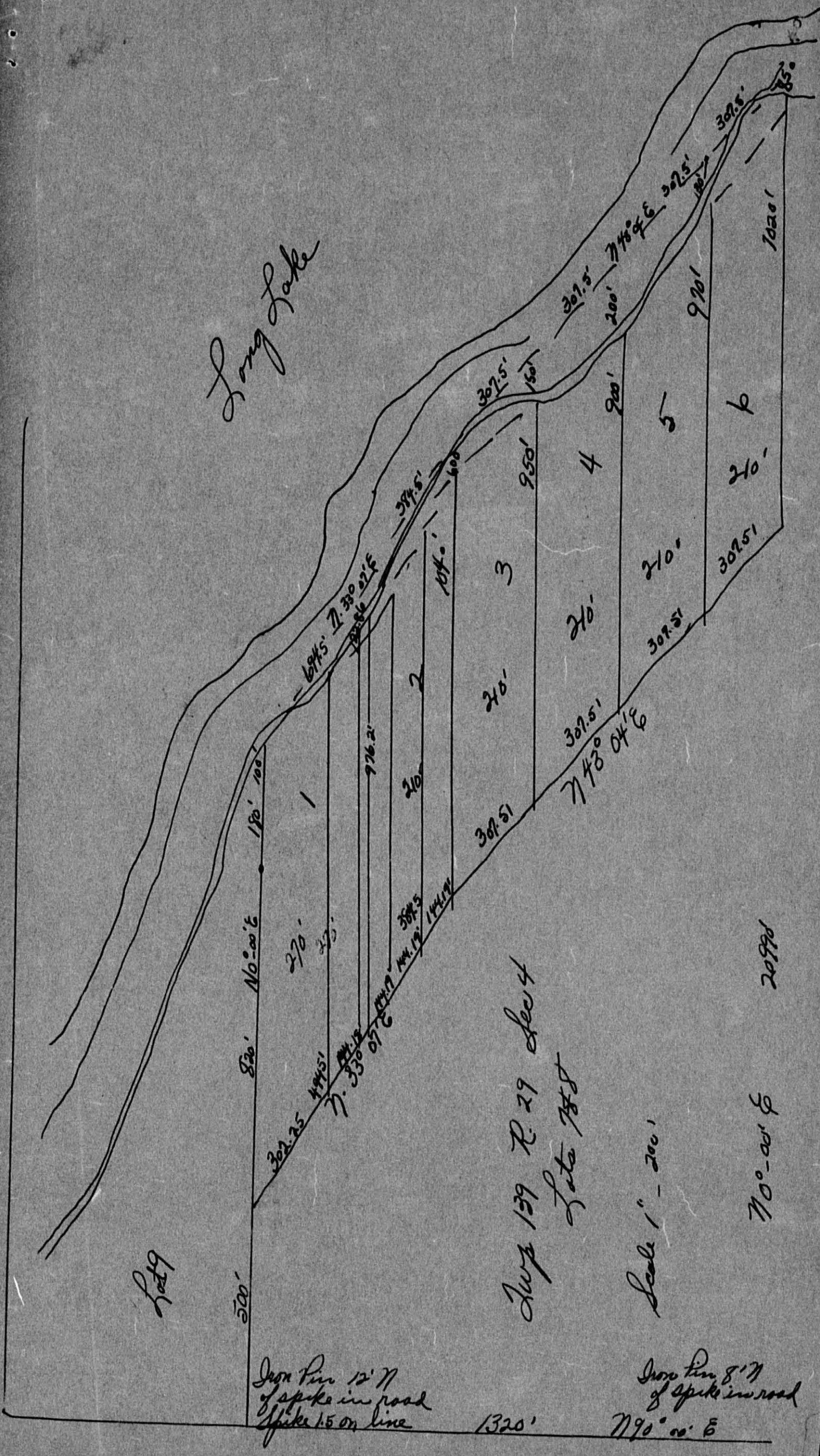
Sup 139 R. 29 Sec 4  
Late 1888

Scale 1" = 200'

790°-00' E 2099'

Iron Pin 12" N  
of spike in road  
Spike 1.5 on line

Iron Pin 8" N  
of spike in road  
790°-00' E



Assessment Roll and Tax List of Real Property in the Town of Pasta Lake

Cass County, Minnesota, for Taxes for the Year 1953.

IN WHOSE NAME ASSESSED	TO WHOM TRANSFERRED	DESCRIPTION OF PROPERTY				TRUE AND FULL VALUATIONS							ASSESSED VALUATIONS					FINAL EQUALIZED VALUE
		SUBDIVISION	Sec. or Lot	Town or Block	Kng.	Number of Acres of Land	LAND Exclusive of Structures and Improvements	BUILDINGS and Other Structures	MACHINERY Permanently Attached to Real Estate	TOTAL True and Full Value	RURAL		ALL OTHER		MACHINERY Permanently Attached to Real Estate	TOTAL ASSESSED VALUE	Total Assessed Value as Equalized by the Board of Review	
											Acres	100ths	Homestead Up to \$4,000 20%	Over \$4,000 and Non-Homestead 33 1/3%				
<i>John W. &amp; Lema Cooper</i>	<i>John C. King Ellison, Gustave E. King Ellison and Opma L. King Ellison</i>	<i>Lot 9 less W 300'</i>	4	139	29	11												
"	"	That part of Gov't. Lot 7 & 8 described as: Beg. at the S.E. Cor. of Lot 8, thence N. along E. line of Lots 7 & 8 a distance of 2099', thence S. 1.3° 04' W. 1230', thence S. 33° 07' W. 879' to a point on the W. line of Lot, 500' N. of S.W. Cor. of lot 8, thence S. 500' to SW. cor. of lot 8, thence E. to Beg.																
		NE 1/4 of NW 1/4																
		NW 1/4 of NW 1/4																
		SW 1/4 of NW 1/4																
		SE 1/4 of NW 1/4																
<i>Alphonse J. Johnson</i>		<i>14419 x 1040' of Lot 8 (part of lot 2 on plat)</i>																
		NE 1/4 of SW 1/4																
		NW 1/4 of SW 1/4																
		SW 1/4 of SW 1/4																
		SE 1/4 of SW 1/4																
<i>Celeste Marie LeBlond</i>		<i>307.5' x 900' x 970' of Lot 8 (lot 5 on plat)</i>																
		NE 1/4 of SE 1/4																
<i>William G. &amp; Freda M. Simon</i>		<i>14419 x 976' of Lot 8 (part of lot 2 on plat)</i>																
		NW 1/4 of SE 1/4																
		SW 1/4 of SE 1/4																
		SE 1/4 of SE 1/4																
<i>Gustave &amp; Walburge Meisel</i>		<i>14419 x 976' of Lot 8 (part of lots 1 &amp; 2 on plat)</i>																

SOLD FOR TAXES	VALUATIONS BY SCHOOL DISTRICTS AS EQUALIZED BY DEPARTMENT OF TAXATION						Tax including State Homestead	State Tax on Non-Homestead	SPECIAL TAXES	TOTAL TAXES	PAID	WHEN PAID	Number of Receipt	March Settlement 1954	June Settlement 1954	Penalty	November Settlement 1954	Penalty	Collections to First Monday in January 1955	Penalty	Delinquent on First Monday in January 1955	Total Delinquent Tax and Penalty	REMARKS
	District No.	District No.	District No.	District No.	District No.	District No.																	
	Rate	Rate	Rate	Rate	Rate	Rate																	
	300	300	300	300	300	300																	
	2 Mills	2 Mills	2 Mills	2 Mills	2 Mills	2 Mills																	
1																							
2																							
3																							
4																							
5																							
6																							
7																							
8																							
9																							
10																							
11																							
12																							
13																							
14																							
15																							
16																							
17																							
18																							
19																							
20																							

CAMP BLANCHÉ  
Kinné Camp  
Ponto Point  
Napane Beach  
Plat of East Shore Pine Be







Assessment Roll and Tax List of Real Property in the Town of Ponto Lake,

Form 50D (53) WILCO-DAVIS COMPANY, MINNEAPOLIS

IN WHOSE NAME ASSESSED	TO WHOM TRANSFERRED	DESCRIPTION OF PROPERTY				TRUE AND FULL VALUATIONS				ASSESSED VALUATIONS					FINAL EQUALIZED VALUE			
		SUBDIVISION	Sec. or Lot	Town or Block	Rng.	Number of Acres of Land	LAND Exclusive of Structures and Improvements	BUILDINGS and Other Structures	MACHINERY Permanently Attached to Real Estate	TOTAL True and Full Value	RURAL		ALL OTHER			MACHINERY Permanently Attached to Real Estate	TOTAL ASSESSED VALUE	Total Assessed Value as Equalized by the Board of Review
											Acres	100ths	Homestead Up to \$4,000 20%	Over \$4,000 and Non-Homestead 33 1/3%				
Mary E. Darrey		NE 1/4 of NE 1/4																
Wm. H. Darrey		NW 1/4 of NE 1/4																
State of Minnesota		SW 1/4 of NE 1/4																
Mary E. Darrey		SE 1/4 of NE 1/4																
Elmer + Ada Doty		NE 1/4 of NW 1/4																
Verl Silberg, Jr.		NW 1/4 of NW 1/4 Lot 1																
State of Minnesota		SW 1/4 of NW 1/4																
		SE 1/4 of NW 1/4																
Vern D. + Elva V. Keep		NE 1/4 of SW 1/4																
Vern + Elva Keep		NW 1/4 of SW 1/4																
Lela + Lee Reynalda		SW 1/4 of SW 1/4																
"		SE 1/4 of SW 1/4																
Mary E. Darrey		NE 1/4 of SE 1/4																
State of Minnesota		NW 1/4 of SE 1/4																
State of Minnesota		SW 1/4 of SE 1/4																
Mary E. Darrey		SE 1/4 of SE 1/4																

117625

Cass County, Minnesota, for Taxes for the Year 1953.

SOLD FOR TAXES	VALUATIONS BY SCHOOL DISTRICTS AS EQUALIZED BY DEPARTMENT OF TAXATION						Tax including State Homestead	State Tax on Non-Homestead	SPECIAL TAXES	TOTAL TAXES	PAID	WHEN PAID	Number of Receipt	March Settlement 1954	June Settlement 1954	Penalty	November Settlement 1954	Penalty	Collections to First Monday in January 1955	Penalty	Delinquent on First Monday in January 1955	Total Delinquent Tax and Penalty	REMARKS
	District No. 20	District No.	District No.	District No.	District No.	District No.																	
	Rate 2.0 Mills	Rate	Rate	Rate	Rate	Rate																	
1	H 24						564		564		1 PAID IN FULL	MAY 31 1954											
2	H 32						752		752		2 PAID IN FULL	MAY 31 1954											
3																							
4	H 31						728		728		4 PAID IN FULL	MAY 31 1954											
5																							
6	SOLD FOR TAXES H 20						470		470														
7	SOLD FOR TAXES H 24						564		564		7 PAID IN FULL	JUL 22 1954										4708	517
8	SOLD FOR TAXES 45						1058	20	1078														
9																							
10																							
11	SOLD FOR TAXES H 24						564		564														
12	SOLD FOR TAXES H 40						940		940														
13	36						846	16	862		13 PAID IN FULL	JUL 21 1954											
14	30						706	14	720		14 PAID IN FULL	JUL 21 1954											
15																							
16	H 24						564		564		16 PAID IN FULL	MAY 31 1954											
17																							
18																							
19	H 40						940		940		19 PAID IN FULL	MAY 31 1954											
20	H 259 111 370						8696	50	8746														

CAMP BLANCHER  
Kline Camp  
Ponto Point  
Japanese Beach  
Plat of East Shore Pine Beach

















# WHEELER LUMBER BRIDGE & SUPPLY CO.

3340 REPUBLIC AVENUE - WEST 9-7854 - ST. LOUIS PARK, MINN.



Low Cost — Quick, Simple Installation — Proven Permanency

In taking this Judg.  
Take:

"All of Lot 8 lying W. of  
Rd which runs N & S  
Thru Lot 8. ~~Lot 150 x 300~~  
Now known as Lots 1 to 8  
& Outlot A Haley's Haven



Assessment Roll and Tax List of Real Property in the Town of Ponto Lake

Cass County, Minnesota, for Taxes for the Year 1953.

IN WHOSE NAME ASSESSED	TO WHOM TRANSFERRED	DESCRIPTION OF PROPERTY				TRUE AND FULL VALUATIONS										FINAL EQUALIZED VALUE						
		SUBDIVISION	Sec. or Lot	Town or Block	Rng.	Number of Acres of Land	No. School District	Indicate Homestead Yes or No	Indicate Agricultural Yes or No	LAND Exclusive of Structures and Improvements		BUILDINGS and Other Structures	MACHINERY Permanently Attached to Real Estate	TOTAL True and Full Value	RURAL		ALL OTHER		MACHINERY Permanently Attached to Real Estate	TOTAL ASSESSED VALUE	Total Assessed Value as Equalized by the Board of Review	
										Dollars	Dollars	Dollars	Dollars	Dollars	Dollars		Dollars	Dollars	Dollars	Dollars	Dollars	Dollars
Eunice D. & James G. Zerry, Sr.		NE 1/4 of NE 1/4	15	139	29	40.00	30															
"		Lot 1 less 8.71 ac.				23.4																
"		SW 1/4 of NE 1/4 Lot 7				29.35																
"		SE 1/4 of NE 1/4 Lot 8				28.70																
Frank E. & Selma M. Astor		100' x 200' of Lot 3 on Lake				28																
Eunice D. & James G. Zerry, Sr.		NE 1/4 of NW 1/4 Lot 2 less 8 ac.				28.55																
Olwe S. Ponsford		NW 1/4 of NW 1/4 Lot 3 less 2.51 ac.				25.49																
Victor H. & Rose M. Uhlig		SW 1/4 of NW 1/4 Lot 4				21.70																
"		SE 1/4 of NW 1/4 Lot 5				17.90																
Vera S. Longendyke		100' x 120' of Lot 3				28																
Victor H. & Rose M. Uhlig		W 1/2 of NE 1/4 of SW 1/4				20																
Mary S. Smith 1/2 Int, Helen, Isabella, Maggie & Albert V. Smith, each 1/8 Int.		NW 1/4 of SW 1/4 Lot 6				41.50																
"		SW 1/4 of SW 1/4				40																
"		SE 1/4 of SW 1/4				40																
M. Pearl Carroll		133' x 100' of Lot 3 from Lake to State Road				35																
Sam Dougherty		NE 1/4 of SE 1/4 Lot 9				17.75																
Frank & Leetta Rawlins		NW 1/4 of SE 1/4 Lot 12				28.80																
"		SW 1/4 of SE 1/4 Lot 11				35.50																
"		Lot 10 less S. 1100' less N 70'				410																
A. G. Hinshaw		50' x 180' of Lot 3				21																
John Warywoda		N 70' of Lot 10				1513929																

SOLD FOR TAXES	VALUATIONS BY SCHOOL DISTRICTS AS EQUALIZED BY DEPARTMENT OF TAXATION						Tax including State Homestead	State Tax on Non-Homestead	SPECIAL TAXES	TOTAL TAXES	PAID	WHEN PAID	Number of Receipt	March Settlement 1954	June Settlement 1954	Penalty	November Settlement 1954	Penalty	Collections to First Monday in January 1955	Penalty	Delinquent on First Monday in January 1955	Total Delinquent Tax and Penalty	REMARKS	
	District No.	District No.	District No.	District No.	District No.	District No.																		
	Rate	Rate	Rate	Rate	Rate	Rate																		
1	H 44						1034		1034	1	2nd Half Paid DEC 4 1954	15370												
2	H 24						564		564	2	1st Half Paid MAY 31 1954	2058		517										
3	H 20						470		470	3	2nd Half Paid FEB 2 1954	1269		564										
4	H 14						330		330	4	1st Half Paid MAY 31 1954	15370		235										
5							86	40	2276	5	2nd Half Paid DEC 4 1954	15370		2276										
6	H 138						3244		3244	6	1st Half Paid MAY 31 1954	12058		1622										
7							3954	44	3998	7	PAID IN FULL APR 5 1954	3866		3998										
8	H 86						2022		2022	8	PAID IN FULL MAY 31 1954			2022										
9	H 32						752		752	9	PAID IN FULL MAY 31 1954	5316		752										
10	SOLD FOR TAXES						936	16	952	10	PAID IN FULL MAY 31 1954	12062		952										
11	H 8						188		188	11	PAID IN FULL MAY 31 1954	5316		188										
12	H 60						1410		1410	12	PAID IN FULL MAY 31 1954	5316		1410										
13	H 16						376		376	13	PAID IN FULL APR 1 1954	4934		800										
14	H 18						424		424	14	PAID IN FULL APR 1 1954													
15	61						1434	28	1462	15	PAID IN FULL APR 21 1954	5510		1462										
16	109						2562	50	2612	16	PAID IN FULL MAY 31 1954	12059		2612										
17	H 58						1364		1364	17	2nd Half Paid SEP 18 1954			682										
18	H 35						1670	16	1686	18	1st Half Paid MAY 31 1954	12056		843										
19	H 66						1904	30	1934	19	2nd Half Paid SEP 18 1954			967										
20	SOLD FOR TAXES						282	64	288	20	1st Half Paid MAY 31 1954													
	H 568						7126		20030															
	284						215499		27156															
	852						2741126																	

Continued next page

288 317

CAMP BLANCHE  
Kings Camp  
Ponto Point  
Nepanee Beach  
Flat of East Shore Pine Beach



Assessment Roll and Tax List of Real Property in the Town of Ponto Lake

IN WHOSE NAME ASSESSED	TO WHOM TRANSFERRED	DESCRIPTION OF PROPERTY				TRUE AND FULL VALUATIONS			ASSESSED VALUATIONS					FINAL EQUALIZED VALUE		
		SUBDIVISION	Sec. of Lot	Town or Block	No. of Acres of Land	LAND Exclusive of Structures and Improvements	BUILDINGS and Other Structures	MACHINERY Permanently Attached to Real Estate	RURAL		ALL OTHER		MACHINERY Permanently Attached to Real Estate		TOTAL ASSESSED VALUE	Total Assessed Value as Equalized by the Board of Review
									Homestead Up to \$4,000 20%	Over \$4,000 and Non-Homestead 33 1/3%	Homestead Up to \$4,000 25%	Over \$4,000 and Non-Homestead 40%				
Paul B. & Frances E. Loomis		Lot 1, "Kenne Camp" 16 13929			19.5030											
		NW 1/4 of NE 1/4														
Robert E. Null		SW 1/4 of NE 1/4 - less 7,400' of 8,488'			35.52											
"		SE 1/4 of NE 1/4 less 2 acres			38											
A. W. Siltman		2 acs. of SE 1/4 of NE 1/4			2											
Jacob Tschida		NE 1/4 of NW 1/4			40											
"		NW 1/4 of NW 1/4			40											
"		SW 1/4 of NW 1/4			40											
"		SE 1/4 of NW 1/4			40											
Jacob W. & Helen Hullgraf		77,400' of E. 488' of SW 1/4 of NE 1/4			448											
Mike Smith		NE 1/4 of SW 1/4			40											
"		NW 1/4 of SW 1/4			40											
"		SW 1/4 of SW 1/4			40											
"		SE 1/4 of SW 1/4			40											
Maggie Smith		NE 1/4 of SE 1/4			40											
"		NW 1/4 of SE 1/4			40											
"		SW 1/4 of SE 1/4			40											
"		SE 1/4 of SE 1/4			40											

(Continued on next page)

57950

Cass County, Minnesota, for Taxes for the Year 1953.

SOLD FOR TAXES	VALUATIONS BY SCHOOL DISTRICTS AS EQUALIZED BY DEPARTMENT OF TAXATION						Tax including State Homestead	State Tax on Non-Homestead	SPECIAL TAXES	TOTAL TAXES	PAID	WHEN PAID	Number of Receipt	March Settlement 1954	June Settlement 1954	Penalty	November Settlement 1954	Penalty	Collections to First Monday in January 1955	Penalty	Delinquent on First Monday in January 1955	Total Delinquent Tax and Penalty	REMARKS
	District No.	District Rate	District No.	District Rate	District No.	District Rate																	
	Dollars	Dollars	Dollars	Dollars	Dollars	Dollars																	
1	H 43						10.10		10.10	1	PAID IN FULL FEB 27 1954	4440	10.10										
2										2													
3	H 46						10.82		10.82	3	2nd Half Paid OCT 30 1954 1st Half Paid MAY 31 1954			541						541			
4	H 50						11.76		11.76	4	2nd Half Paid OCT 30 1954 1st Half Paid MAY 31 1954	12869		588						588			
5		H 47 55					26.52	26	26.78	5	PAID IN FULL MAY 31 1954	12065		26.78									
6	H 46						10.82		10.82	6	PAID IN FULL MAY 31 1954			10.82									
7	H 57						13.40		13.40	7	PAID IN FULL MAY 31 1954			13.40									
8	H 44						10.34		10.34	8	PAID IN FULL MAY 31 1954	12067		10.34									
9	H 38						8.94		8.94	9	PAID IN FULL MAY 31 1954			8.94									
10	H 88						20.68		20.68	10	PAID IN FULL MAY 14 1954	6026		20.68									
11	H 35						8.22		8.22	11	PAID IN FULL APR 1 1954												
12	H 62						14.58		14.58	12	PAID IN FULL APR 1 1954												
13	H 68						15.98		15.98	13	PAID IN FULL APR 1 1954												
14	H 76						17.86		17.86	14	PAID IN FULL APR 1 1954	4934		14.34									
15										15													
16	H 39						9.16		9.16	16	PAID IN FULL APR 1 1954												
17	H 65						15.28		15.28	17	PAID IN FULL APR 1 1954												
18	H 171 55						53.14	26	53.40	18	PAID IN FULL APR 1 1954												
19	H 38						8.94		8.94	19	PAID IN FULL APR 1 1954												
20										20													
	H 96 55						26.52		24.02														
	1021						26.54		26.54					10.10	24.567					1129			









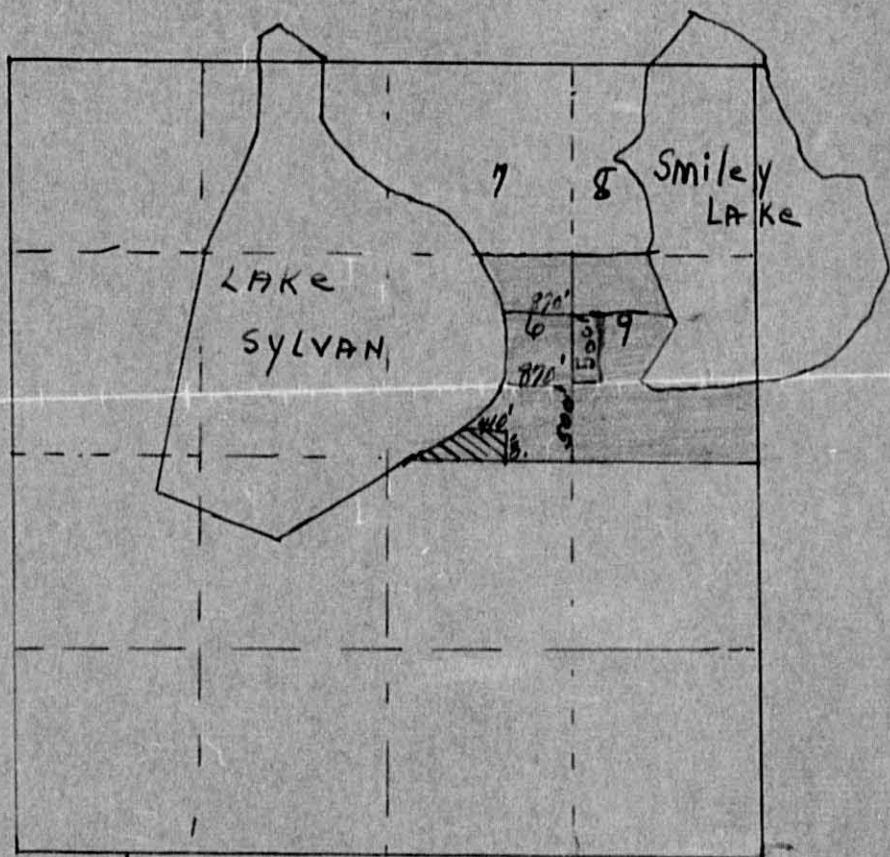




Ponto Lake.

Govt. Lots 6 + 9

Sec. 20-139-29



5100' x W 410' in SW  
corner of Lot 6  
Bert + Aline Persons.

X - (870' x 500' of Lots 6 + 9)  
10 ac. of S. 1000' of Lots 6 + 9  
Nick J. Laub

X - S. 1000' of Lots 6 + 9 less  
10 acres + less S. 100' of W. 410'  
G. Dreckleton

X - Lots 6 + 9 less S. 1000' (or  
N 320' of Lots 6 + 9) L. E. Minnette



































Assessment Roll and Tax List of Real Property in the Town of Ponto Lake

Cass County, Minnesota, for Taxes for the Year 1953.

Form SCD (53) MARS-DAVE COMPANY, MINNAPOLIS

IN WHOSE NAME ASSESSED	TO WHOM TRANSFERRED	DESCRIPTION OF PROPERTY				TRUE AND FULL VALUATIONS					ASSESSED VALUATIONS					FINAL EQUALIZED VALUE		
		SUBDIVISION	Sec. or Lot	Town or Block	Rng.	Number of Acres of Land	LAND Exclusive of Structures and Improvements	BUILDINGS and Other Structures	MACHINERY Permanently Attached to Real Estate	TOTAL True and Full Value	RURAL		ALL OTHER		MACHINERY Permanently Attached to Real Estate		TOTAL ASSESSED VALUE	Total Assessed Value as Equalized by the Board of Review
											Acres	100ths	Homestead Up to \$4,000 20%	Over \$4,000 and Non-Homestead 33 1/3%				
Hubert P. & Katherine Garske		E. 100' x W. 40' of N. 500' of Lot 2																
Marcella Tracy		W. 80' of N. 500' of Lot 2																
William & Mrs. William Christensen		E. 100' of W. 610' of N. 500' of Lot 2																
Frank L. & Mina M. Harrington		E. 100' of W. 710' of N. 500' of Lot 2																
State of Minnesota William & Ida Christensen		E. 100' of W. 810' of N. 500' of Lot 2																
Stanley O. & Marian E. Werner		E. 80' of W. 790' of N. 500' of Lot 2																
W. H. Strong		W. 233' of Lot 6 less S. 40'																
Earl & Vivienne Stockton		S. 400' of W. 233' of Lot 6																
		NE 1/4 of SW 1/4																
		NW 1/4 of SW 1/4																
		SW 1/4 of SW 1/4																
		SE 1/4 of SW 1/4																
		NE 1/4 of SE 1/4																
		NW 1/4 of SE 1/4																
		SW 1/4 of SE 1/4																
		SE 1/4 of SE 1/4																

950

SOLD FOR TAXES	VALUATIONS BY SCHOOL DISTRICTS AS EQUALIZED BY DEPARTMENT OF TAXATION						Tax including State Homestead	State Tax on Non-Homestead	SPECIAL TAXES	TOTAL TAXES	PAID	WHEN PAID	Number of Receipt	March Settlement 1954	June Settlement 1954	November Settlement 1954	Penalty	Collections to First Monday in January 1955	Penalty	Delinquent on First Monday in January 1955	Total Delinquent Tax and Penalty	REMARKS
	District No.	District No.	District No.	District No.	District No.	District No.																
	Rate	Rate	Rate	Rate	Rate	Rate																
1	8						188	04	192	1 PAID IN FULL	AUG 17 1954											
2	62						1458	28	1486	2 PAID IN FULL	AUG 17 1954											
3	102						2398	48	2446	3 PAID IN FULL	MAY 31 1954											
4	38						894	18	912	4 PAID IN FULL	MAY 24 1954											
5							1196	22	1218	5 PAID IN FULL	MAY 31 1954											
6																						
7	58						1364	28	1392	7 PAID IN FULL	MAY 31 1954											
8																						
9	11						258	06	264	9 PAID IN FULL	JUL 21 1954											
10	7						164	04	168	10 PAID IN FULL	MAY 20 1954											
11																						
12																						
13																						
14																						
15																						
16																						
17																						
18																						
19																						
20																						

586

46 = 332

1196  
6924  
7920

158

8078

6136

1942

ANCHOR  
Klume Camp  
Ponto Lake  
Japanese Beach  
Flat of East Shore  
Fire Beach

























































