

1932  
Tax List  
PONTO LAKE

Treasurer's Office, Cass County, Minnesota

RECEIVED this, the first Monday (being the 2nd day) of January, A. D. 1933, of A. A. Cates, Auditor of said County, Minnesota, the Tax List of all Taxable Real and Personal Property in the Town of Ponto Lake in said County for the year A. D. 1932, as specified above and amounting to eight thousand one hundred thirty two 3/4 Dollars.

W. T. McKeown  
County Treasurer.

Office of County Treasurer, Cass County, Minnesota

January 2, 1933

To L. H. Peterson, County Auditor:

Sir: Herewith return to you the Tax List for the Town of Ponto Lake in said County for the year 1932, heretofore received from you. I certify that I have compared the same with the duplicate receipts in your office, and have written opposite the amount of each tax so receipted the words "One half paid" or "Paid in full" as the case may be, and the number of my receipt given in discharge of said tax, and each tract or lot of real property against which the taxes remain unpaid is delinquent for said year.

Yours Respectfully,  
W. T. McKeown  
County Treasurer.

Auditor's Office, Cass County, Minnesota

I, A. A. Cates, Auditor of said County, and State of Minnesota, do hereby certify that the following is a correct list of the Taxes levied on the Real and Personal Property in the Town of Ponto Lake for the year 1932.

WITNESS my hand and official seal, the 2nd day of January 1933.

(SEAL)

A. A. Cates  
County Auditor.

Auditor's Office, Cass County, Minnesota

Jan. 2 1933

I hereby certify that on the first Monday in January, 1933, I received of W. T. McKeown, County Treasurer, the Tax List of the Town of Ponto Lake in said County for the year 1932, that I have compared the said list with the Statements receipted for by said Treasurer, which are on file in my office, and that each tract or lot of real property therein against which the taxes, or any part thereof, remains unpaid are delinquent for said year.

(SEAL)

County Auditor.



COLLECTIONS OF TAXES OF 1932, Town OF Ponto Lake, CASS COUNTY, MINNESOTA

FUNDS	MARCH SETTLEMENT 193 <u>2</u>	JUNE SETTLEMENT 193 <u>2</u>	OCTOBER SETTLEMENT 193 <u>2</u>	Amount Collected From November 1st to 1st Monday in January	MARCH SETTLEMENT 193 <u>  </u>	JUNE SETTLEMENT 193 <u>  </u>	OCTOBER SETTLEMENT 193 <u>  </u>	TOTAL	BALANCE UNCOLLECTED					
State Revenue,	3302	10655	6029	571										
State School,	589	1899	1084	102										
Teacher's Insurance,	57	185	106	10										
Ming Gen'l Hospital,	239	772	440	41										
County Revenue,	4603	14855	8425	792										
County Road and Bridge,	2110	6860	3885	365										
County Poor,	8297	20776	15276	1436										
Road Maintenance,	2675	8632	1925	465										
County Bond and Interest,	5871	18977	10809	1016										
County Sinking,	718	2316	1324	124										
Town Revenue,	1742	5621	3207	304										
Town Road and Bridge,	1206	3891	2220	203										
Town Drag Tax,	478	1544	881	83										
Town State Loan,	6120	19750	11268	1059										
<i>Phone</i>	2392	7721	4405	414										
Local 1 Mill School,	478	1544	881	83										
Special School,	12765	41202	23503	2211										
State Loan School,	2120	6841	3903	367										
<i>Sinking</i>	517	1668	951	89										
<i>Interest</i>	389	1251	719	67										
Moneys and Credits														
<b>TOTALS</b>	<b>56667</b>	<b>182880</b>	<b>104333</b>	<b>4808</b>										
SCHOOL DISTRICTS	Special Tax	General Tax	TOTAL	Special Tax	General Tax	TOTAL	Special Tax	General Tax	TOTAL	Special Tax	General Tax	TOTAL	TOTAL	Balance Uncollected
School District No.														
School District No.														
School District No.														
School District No.														
<b>TOTAL</b>														

UNPLATED

Tax List of Real Property in the Town of Ponto Lake

IN WHOSE NAME ASSESSED	TO WHOM TRANSFERRED	Sold for Taxes	SUB-DIVISION	Sec. or Lot	Town or Block	Rng.	No. of Acres		VALUATION	No. School Dist.	GENERAL TAXES	School District	School District	School District				
							No. Rate	No. Rate				No. Rate						
										Mills			Mills			Mills		
										Dollars Cts.			Dollars Cts.			Dollars Cts.		
<i>A. L. Undine</i>			NE 1/4 of NE 1/4	1	139 29		39 50	122										
"			NW 1/4 of NE 1/4	2			38 50	119										
"			SW 1/4 of NE 1/4	3			40	123										
"			SE 1/4 of NE 1/4	4			40	123										
"				5														
"			NE 1/4 of NW 1/4	6	<i>Lot 3</i>		37 50	116										
"			NW 1/4 of NW 1/4	7	" 4		36 50	113										
"			SW 1/4 of NW 1/4	8			40	92										
"			SE 1/4 of NW 1/4	9	" 5		39 75	62										
"				10														
"			NE 1/4 of SW 1/4	11	" 7		27	15										
"			NW 1/4 of SW 1/4	12	" 6		21	49										
"			SW 1/4 of SW 1/4	13														
"			SE 1/4 of SW 1/4	14	" 8		55 75	123										
"				15														
"			NE 1/4 of SE 1/4	16			40	92										
"			NW 1/4 of SE 1/4	17			40	92										
"			SW 1/4 of SE 1/4	18			40	123										
"			SE 1/4 of SE 1/4	19	" 9		35 55	113										
				20														
							571 05	1477										

Cass County, Minnesota, for Taxes for the Year 1932

Ditch No.	Ditch No.	Ditch No.	Ditch No.	TOTAL TAXES	PAID	WHEN PAID	Number of Receipt	March Settlement	June Settlement	Penalty	November Settlement	Penalty	Collections to First Monday in January	Penalty	Delinquent on First Monday in January	REMARKS
				1445	1st Half Paid	OCT 31 1933										
				1409	2nd Half Paid	MAY 31 1933										
				1457	1st Half Paid	OCT 31 1933										
				1457	2nd Half Paid	MAY 31 1933										
				1457	1st Half Paid	OCT 31 1933										
				1374	2nd Half Paid	MAY 31 1933										
				1338	1st Half Paid	OCT 31 1933										
				1090	2nd Half Paid	MAY 31 1933										
				734	1st Half Paid	OCT 31 1933										
				178	2nd Half Paid	MAY 31 1933										
				580	1st Half Paid	OCT 31 1933										
				1457	2nd Half Paid	MAY 31 1933										
				1090	1st Half Paid	OCT 31 1933										
				1090	2nd Half Paid	MAY 31 1933										
				1457	1st Half Paid	OCT 31 1933										
				1338	2nd Half Paid	MAY 31 1933										
				17494												

*6957* ✓ *8747* ✓ *8747*

*8747* *8747*











Tax List of Real Property in the Town of Ponto Lake

IN WHOSE NAME ASSESSED	TO WHOM TRANSFERRED	Sold for Taxes	SUB-DIVISION	Sec. or Lot	Town or Block	No. of Acres		VALUATION	No. School Dist.	GENERAL TAXES	School District	School District	School District
						Reg.	Acres				No. Rate	No. Rate	No. Rate
N.P. Ry. Co.			NE 1/4 of NE 1/4		Lot 1	5	139.29	36					
C.A. Smith			NW 1/4 of NE 1/4		" 2		36						
Chas. B. Anderson			SW 1/4 of NE 1/4		"		40						
Central Union Trust Co.			SE 1/4 of NE 1/4		" 5		35.10						
C.A. Smith			NE 1/4 of NW 1/4		" 3		36						
Central Union Trust Co., N.Y.			NW 1/4 of NW 1/4		" 4		36						
E.C. Johnson			SW 1/4 of NW 1/4		"		40						
			SE 1/4 of NW 1/4		"		40						
Central Union Trust Co., N.Y.			NE 1/4 of SW 1/4		"		40						
Kuperhauser et al			NW 1/4 of SW 1/4		"		40						
J.H. Silberg			SW 1/4 of SW 1/4		"		40						
E. Eckhardt			SE 1/4 of SW 1/4		"		40						
Central Union Trust Co., N.Y.			NE 1/4 of SE 1/4		" 6		36						
Thos. H. Harvey			NW 1/4 of SE 1/4		" 7		37						
			SW 1/4 of SE 1/4		" 8		18.25						
			SE 1/4 of SE 1/4		"								
						547.95	16.94						

Cass County, Minnesota, for Taxes for the Year 1932

Ditch No.	Ditch No.	Ditch No.	Ditch No.	TOTAL TAXES	PAID	WHEN PAID	Number of Receipt	March Settlement	June Settlement	Penalty	November Settlement	Penalty	Collections to First Monday in January	Penalty	Delinquent on First Monday in January	REMARKS	
																	\$
				13.15	PAID IN FULL	MAY 21 1932	48.00	✓									
				13.15	PAID IN FULL	MAY 21 1932	48.00	✓									
				14.57	PAID IN FULL	MAY 31 1932	44.69	✓									
				12.79	PAID IN FULL	MAY 31 1932	44.69	✓									
				13.15	PAID IN FULL	MAY 27 1932	48.00	✓									
				13.15	PAID IN FULL	MAY 31 1932	44.69	✓									
				14.57	PAID IN FULL	MAY 21 1932	44.69	✓									
				14.57													
				14.57	PAID IN FULL	MAY 21 1932	44.69	✓									
				14.57													
				14.57	PAID IN FULL	MAY 21 1932	44.69	✓									
				14.57													
				15.57											16.96	15.51	1.45
				14.57													
				13.15	PAID IN FULL	MAY 21 1932	44.69	✓									
				12.32	PAID IN FULL												
				6.87	DEL.												
				200.26					107.68								

Tax List of Real Property in the Town of Ponto Lake

Cass County, Minnesota, for Taxes for the Year 1932

IN WHOSE NAME ASSESSED	TO WHOM TRANSFERRED	Sold for Taxes	SUB-DIVISION	Sec. or Lot	Town or Block	No. of Acres		VALUATION	No. School Dist.	GENERAL TAXES	School District	School District	School District	Ditch No.	Ditch No.	Ditch No.	Ditch No.	TOTAL TAXES	PAID	WHEN PAID	Number of Receipt	March Settlement	June Settlement	Penalty	November Settlement	Penalty	Collections to First Monday in January	Penalty	Delinquent on First Monday in January	REMARKS				
						No. Rate	No. Rate				No. Rate	Dollars	cts.																		cts.	cts.	cts.	cts.
Mississippi River Lbr. Co.			NE 1/4 of NE 1/4	6		139	29	36.50										1338																
"			NW 1/4 of NE 1/4					37.50										1362																
Minnie D. Kreber			SW 1/4 of NE 1/4					40										1457																
B. D. Hebert			SE 1/4 of NE 1/4					40										1457																
Fowler & Chapman			NE 1/4 of NW 1/4					38.50										1397																
Red River Lbr. Co.			NW 1/4 of NW 1/4		Lot 4			28										1018																
"			SW 1/4 of NW 1/4		" 5			48.20										1783																
Minnie D. Kreber			SE 1/4 of NW 1/4					40										1457																
"			NE 1/4 of SW 1/4					40										1457																
John Thompson			NW 1/4 of SW 1/4					49.78										1824																
Chas. J. McKenzie			SW 1/4 of SW 1/4					49.96										1824																
"			SE 1/4 of SW 1/4					40										1457																
J. B. Walker			NE 1/4 of SE 1/4					40										1457																
L. W. Farnham			NW 1/4 of SE 1/4					40										1457																
Margaret Sayer			SW 1/4 of SE 1/4					40										1457																
Eugene Hutson & int. & G. W. Hamilton & int.			SE 1/4 of SE 1/4		" 3			36.50										1504																
								644.94											23676															

5 14 1934 1285  
 5 14 1934  
 11 13 1018 .95  
 19 17 1753 1.64

PAID IN FULL MAY 31 1932 4623 ✓ 1504 ✓

1504

Tax List of Real Property in the Town of Ponto Lake

IN WHOSE NAME ASSESSED	TO WHOM TRANSFERRED	Sold for Taxes	SUB-DIVISION	Sec. of Lot	Town or Block	No. of Acres		VALUATION	No. School Dist.	GENERAL TAXES	School District	School District	School District
						Rate	Rate				Rate		
Lawrence St. Bk., Pine River			NE 1/4 of NE 1/4		7	139.29	52.60	175					
"			NW 1/4 of NE 1/4										
J.D. Mc Colliester			SW 1/4 of NE 1/4		7	20.25	62						
H.P. Lopez Jr. et al			SE 1/4 of NE 1/4		9	22.55	80						
Jonas F. Nelson			NE 1/4 of NW 1/4			40	123						
Central Union Trust Co., N.Y.			NW 1/4 of NW 1/4		4	50.17	154						
"			SW 1/4 of NW 1/4		2	50.42	154						
Jonas F. Nelson			SE 1/4 of NW 1/4			40	123						
Arthur Mc Brides			NE 1/4 of SW 1/4		6	38	132						
Central Union Trust Co., N.Y.			NW 1/4 of SW 1/4		3	50.68	158						
"			SW 1/4 of SW 1/4		4	47.30	144						
Frank Johnson			SE 1/4 of SW 1/4		5	27.20	83						
J.D. Mc Colliester			NE 1/4 of SE 1/4		10	28.70	88						
Central Union Trust Co., N.Y.			NW 1/4 of SE 1/4		11	35.65	110						
"			SW 1/4 of SE 1/4										
"			SE 1/4 of SE 1/4			40	123						
						573.49	1706						

Cass County, Minnesota, for Taxes for the Year 1932

Ditch No.	Ditch No.	Ditch No.	Ditch No.	TOTAL TAXES	PAID	WHEN PAID	Number of Receipt	March Settlement	June Settlement	Partly	November Settlement	Penalty	Collections to First Monday in January	Penalty	Delinquent on First Monday in January	REMARKS
				2073												
				734		PAID IN FULL			5860							Discount.
				947												
				1457												
				1824		PAID IN FULL			4469				1824			
				1824		PAID IN FULL			4469				1824			
				1457												
				1563												
				1836		PAID IN FULL			4469				1836			
				1705		PAID IN FULL			4469				1705			
				983		2nd Half Paid			4469				492		491	
				1042		PAID IN FULL			5860							Discount.
				1303		PAID IN FULL			4469				1303			
				1457		PAID IN FULL			4469				1457			
				20205									10441		1770	

Tax List of Real Property in the Town of Ponto Lake

IN WHOSE NAME ASSESSED	TO WHOM TRANSFERRED	Sold for Taxes	SUB-DIVISION	No. of Acres		VALUATION	No. School Dist.	GENERAL TAXES	School District	School District	School District
				Sec. or Lot	Town or Block				Rate	Rate	Rate
Mary E. Darrey			NE 1/4 of NE 1/4	8	13929 40	928					
Wm. H. Darrey			NW 1/4 of NE 1/4		40	92					
Central Union Trust Co., N.Y.			SW 1/4 of NE 1/4		40	123					
Mary E. Darrey			SE 1/4 of NE 1/4		40	132					
H. J. Logee et al			NE 1/4 of NW 1/4		40	92					
"			NW 1/4 of NW 1/4 Lot 1		36 25	92					
"			SW 1/4 of NW 1/4		40	126					
"			SE 1/4 of NW 1/4		40	123					
<del>Am. Stuebel's int. Joseph Johnson's int. Florence L. Engel</del>			NE 1/4 of SW 1/4		40	123					
Central Union Trust Co., N.Y.			NW 1/4 of SW 1/4		40	122					
"			SW 1/4 of SW 1/4		40	123					
"			SE 1/4 of SW 1/4		40	123					
Mary E. Darrey			NE 1/4 of SE 1/4		40	123					
Central Union Trust Co., N.Y.			NW 1/4 of SE 1/4		40	123					
"			SW 1/4 of SE 1/4		40	123					
Mary E. Darrey			SE 1/4 of SE 1/4		40	152					

63625 1918

Cass County, Minnesota, for Taxes for the Year 1932

Ditch No.	Ditch No.	Ditch No.	Ditch No.	TOTAL TAXES	PAID	WHEN PAID	Number of Receipt	March Settlement	June Settlement	Penalty	November Settlement	Penalty	Collections to First Monday in January	Penalty	Delinquent on First Monday in January	REMARKS	
																	Dollars
				1457											15 93	14 59	1 36
				1090											11 90	10 90	1 02
				1457	3	PAID IN FULL											
				1457	4	MAY 31 1933	4469								17 09	15 63	1 46
				1090	6												
				1090	7												
				1492	8												
				1457	9												
				1457	11	PAID IN FULL											
				1445	12	PAID IN FULL											
				1457	13	PAID IN FULL											
				1457	14	PAID IN FULL											
				1457	16										15 93	14 59	1 36
				1457	17	PAID IN FULL											
				1457	18	PAID IN FULL											
				1800	19										19 68	18 00	1 68
					20												

22683

2907 7285



Tax List of Real Property in the Town of Ponto Lake

Cass County, Minnesota, for Taxes for the Year 1932

IN WHOSE NAME ASSESSED	TO WHOM TRANSFERRED	Sold for Taxes	SUB-DIVISION	No. of Acres		VALUATION	No. School Dist.	GENERAL TAXES	School District	School District	School District	Ditch No.	Ditch No.	Ditch No.	Ditch No.	TOTAL TAXES	PAID	WHEN PAID	Number of Receipt	March Settlement	June Settlement	Penalty	November Settlement	Penalty	Collections to First Monday in January	Penalty	Delinquent on First Monday in January	REMARKS																													
				Sec. or Lot	Town or Block				Rtg.	Acres	100'																		No.	Rate	No.	Rate	No.	Rate																							
						Dollars				cts.	\$	cts.	\$	cts.	\$	cts.	\$	cts.	\$	cts.	\$	cts.	\$	cts.	\$	cts.	\$	cts.	\$	cts.																											
Mrs. Gottlieb Albrecht			NE 1/4 of NE 1/4	10	139.29	40		123							1457																																										
			NW 1/4 of NE 1/4 Lot 5		38.90			43							509																																										
			SW 1/4 of NE 1/4		40			111							1315											1438	1315	1.23																													
			SE 1/4 of NE 1/4		40			125							1480											1618	1480	1.38																													
Adolph A. Uhlig			NE 1/4 of NW 1/4 " 2		14			53							628	6	PAID IN FULL	OCT 10 1933	6023																																						
			NW 1/4 of NW 1/4																																																						
			SW 1/4 of NW 1/4																																																						
C. H. Eckles			SE 1/4 of NW 1/4 " 3		24.60			85							1007	9	PAID IN FULL	OCT 10 1933	6023																																						
			NW 1/4 of NW 1/4 " 1		1.50			47							837	10	PAID IN FULL	APR 17 1933	6021																																						
Adolph A. Uhlig			NE 1/4 of SW 1/4		40			58							687	11	PAID IN FULL	OCT 10 1933																																							
			NW 1/4 of SW 1/4 Lot 4 less plat of																																																						
			SW 1/4 of SW 1/4 " East shore (2 ac.)		11.35			226							2677	13	PAID IN FULL	OCT 10 1933	6023																																						
			SE 1/4 of SW 1/4		40			77							912	14	PAID IN FULL	OCT 10 1933																																							
Norman Siltman			NE 1/4 of SE 1/4		40			131							1537	16	PAID IN FULL	OCT 31 1933	7332																																						
			NW 1/4 of SE 1/4		40			77							912	17	PAID IN FULL	OCT 31 1933	3971																																						
			SW 1/4 of SE 1/4		40			129							1528	18	PAID IN FULL	OCT 31 1933																																							
			SE 1/4 of SE 1/4 less 1 ac. cemetery		39			167							1978	19	PAID IN FULL	OCT 31 1933																																							
						449.35								171.98																																											
																35.42																																									
																										88.95																															
																										14.98																															

14.98 due balance.











Tax List of Real Property in the Town of Ponto Lake

IN WHOSE NAME ASSESSED	TO WHOM TRANSFERRED	Sold for Taxes	SUB-DIVISION	Sec. or Lot	Town or Block	No. of Acres	VALUATION	No. School Dist.	GENERAL TAXES	School District	School District	School District	
										No. Rate	No. Rate	No. Rate	
										Mills	Mills	Mills	
										Dollars	cts.	cts.	cts.
Theo. J. Albrecht			NE 1/4 of NE 1/4			15 139 29 40	141						
"			NW 1/4 of NE 1/4 Lot 1			32 45	191						
"			SW 1/4 of NE 1/4 " 7			29 35	31						
"			SE 1/4 of NE 1/4 " 8			28 70	88						
John Stacy			100' x 120' of Lot 3 on lake			28	29						
Theo. J. Albrecht			NE 1/4 of NW 1/4 Lot 2			36 55	426						
Olive S. Ponaford			NW 1/4 of NW 1/4 " 3 here 215 ac.			25 49	159						
H. P. Hinshaw			SW 1/4 of NW 1/4 " 4			21 70	96						
"			SE 1/4 of NW 1/4 " 5			17 90	15						
M. Sheffer			100' x 120' of Lot 3			28	29						
H. P. Hinshaw			NE 1/4 of SW 1/4			40	46						
"			NW 1/4 of SW 1/4 " 6			41 50	161						
Mary V. Smith's int., Ellen, Isabelle, Maggie, & Albert V. Smith, each 1/4 int.			SW 1/4 of SW 1/4			40	46						
"			SE 1/4 of SW 1/4			40	77						
Arvid G. Hinshaw			133 x 150' of Lot 3 from lake to st. road			46	33						
Sam Dougherty			NE 1/4 of SE 1/4 Lot 9			17 75	106						
H. P. Hinshaw			NW 1/4 of SE 1/4 " 12			28 80	61						
"			SW 1/4 of SE 1/4 " 11			35 50	109						
"			SE 1/4 of SE 1/4 " 10			15 10	60						
Mrs. Omar Todd			50 x 180' of Lot 3			21	7						
Elmer Ellingson			1 acre of Lot 1			7	34						
A. G. Hinshaw			75' x 160' of Lot 3			28	7						
							498 30	1952					

Cass County, Minnesota, for Taxes for the Year 1932

Ditch No.	Ditch No.	Ditch No.	Ditch No.	TOTAL TAXES	PAID	WHEN PAID	Number of Receipt	March Settlement	June Settlement	Penalty	November Settlement	Penalty	Collections to First Monday in January	Penalty	Delinquent on First Monday in January	REMARKS
				16 70	1											
				22 62	2	OCT 31 1933										
				367	3	1st Half Paid MAY 31 1933	7003			26 71			56 90			
				1042	4											
				343	5											
				560 46	6	2nd Half Paid OCT 31 1933	7003			25 23			28 52			
				1883	7	1st Half Paid OCT 31 1933	6864			94 22			941			
				1137	8	DEL. 5 9 1934							12 43	11 37	70 6	
				178	9	DEL. 5 9 1934							1 95	1 78	17	
				343	10	PAID IN FULL MAR 15 1933										
				543	11	DEL. 5 9 1934							5 96	5 55	51	
				1407	12	DEL. 5 9 1934							20 85	19 07	1 78	
				545	13											
				912	14											
				391	15	PAID IN FULL JUL 28 1933	54 06						391	08		
				1235	16	DEL. 5 9 1934							15 72	12 55	1 17	
				222	17	DEL. 5 9 1934							7 89	7 22	67	
				1291	18	DEL. 5 9 1934	12 68						14 11	12 91	1 20	
				711	19	DEL. 5 9 1934							7 77	7 11	66	
				83	20	PAID IN FULL DEC 30 1933	76 92						83	07		
				408		PAID IN FULL MAY 26 1933	31 62			403						
				83		PAID IN FULL JUL 28 1933	54 06						83	02		
				23118					343	6539		6607		83		

Tax List of Real Property in the Town of Ponto Lake

IN WHOSE NAME ASSESSED	TO WHOM TRANSFERRED	Sold for Taxes	SUB-DIVISION	Sec. or Lot	Town or Block	No. of Acres		VALUATION	No. School Dist.	GENERAL TAXES	School District	School District	School District
						Rate	Rate				Rate		
			NE 1/4 of NE 1/4			15	139.29						
R. H. Greene			<del>100x160 of Lot 3</del>			37	57						
Arvid G. Hinshaw			50'x165' from Lake to State Road of Lot 3			19	33						
A. G. Hinshaw			50'x140' from Road to Lake of Lot 3			16	37						
Mary H. Gilbert			120'x100' of Lot 3			28	29						
Emil Anderson			<del>1/4</del> 3/4 ac of Lot 1			75	34			PAID IN FULL	MAY 31 1933		
			NW 1/4 of NW 1/4										
			SW 1/4 of NW 1/4										
			SE 1/4 of NW 1/4										
			NE 1/4 of SW 1/4										
			NW 1/4 of SW 1/4										
			SW 1/4 of SW 1/4										
			SE 1/4 of SW 1/4										
			NE 1/4 of SE 1/4										
			NW 1/4 of SE 1/4										
			SW 1/4 of SE 1/4										
			SE 1/4 of SE 1/4										

175 184

Cass County, Minnesota, for Taxes for the Year 1932

Ditch No.	Ditch No.	Ditch No.	Ditch No.	TOTAL TAXES	PAID	WHEN PAID	Number of Receipt	March Settlement	June Settlement	Penalty	November Settlement	Penalty	Collections to First Monday in January	Penalty	Delinquent on First Monday in January	REMARKS
				604												
				391	2	DEL. 677 1934 1595										
				438	3	PAID IN FULL JUL 28 1933	5406						849	16		
				343	4	PAID IN FULL JUL 29 1933										
				403	5	PAID IN FULL JUL 24 1933	5407									
					6	PAID IN FULL MAY 31 1933	4252						403	247		
					7											
					8											
					9											
					10											
					11											
					12											
					13											
					14											
					15											
					16											
					17											
					18											
					19											
					20											

Chapter 414 - 1933

2179

403 1076



Tax List of Real Property in the Town of Ponto Lake

Cass County, Minnesota, for Taxes for the Year 1932

IN WHOSE NAME ASSESSED	TO WHOM TRANSFERRED	Sold for Taxes	SUB-DIVISION	No. of Acres			VALUATION	No. School Dist.	GENERAL TAXES	School District	School District	School District	Ditch No.	Ditch No.	Ditch No.	Ditch No.	TOTAL TAXES	PAID	WHEN PAID	Number of Receipts	March Settlement	June Settlement	Penalty	November Settlement	Penalty	Collections to First Monday in January	Penalty	Delinquent on First Monday in January	REMARKS					
				No. Rate	No. Rate	No. Rate				Rate	Rate	Rate																						
							Dollars		cts.	\$	cts.	\$	cts.	\$	cts.	Dollars	cts.	Month	Day	Year	\$	cts.	\$	cts.	\$	cts.	\$	cts.	\$	cts.	\$	cts.		
Michael Smith			NE 1/4 of NE 1/4	17	139	29	40	197								2333	1	PAID IN FULL	OCT 31	1933														
"			NW 1/4 of NE 1/4				40	31								367	2	PAID IN FULL	OCT 31	1933														
"			SW 1/4 of NE 1/4				40	113								4338	3	PAID IN FULL	OCT 31	1933														
"			SE 1/4 of NE 1/4				40	172								2037	4	PAID IN FULL	OCT 31	1933														
"			NE 1/4 of NW 1/4				40	92								1090	6	PAID IN FULL	OCT 31	1933														
"			NW 1/4 of NW 1/4				40	123								1457	7	PAID IN FULL	OCT 31	1933														
"			SW 1/4 of NW 1/4				40	123								1457	8	PAID IN FULL	OCT 31	1933														
"			SE 1/4 of NW 1/4				40	92								1090	9	PAID IN FULL	OCT 31	1933														
Agnes Conrad			NE 1/4 of SW 1/4				40	108								1279	11																	
"			NW 1/4 of SW 1/4				40	108								1279	12																	
"			SW 1/4 of SW 1/4				40	114								1350	13																	
"			SE 1/4 of SW 1/4 Lot 2				39	20	108							1279	14																	
Glenn Smith			NE 1/4 of SE 1/4				40	389								4607	16	PAID IN FULL	OCT 31	1933														
"			NW 1/4 of SE 1/4				40	123								1457	17	PAID IN FULL	OCT 31	1933														
Maggie Smith			SW 1/4 of SE 1/4				40	123								1457	18																	
"			SE 1/4 of SE 1/4				38	05	127							1604	19																	
							637	25	2143																									
																	25381																	

7/63 } 11169 391

1398 1209 119  
1398 1279 119  
1476 1350 1.26  
1398 1279 1.19

6064 212

15 98 14 59 1.36  
16 44 15 04 1.40

172 33

Tax List of Real Property in the Town of Ponto Lake

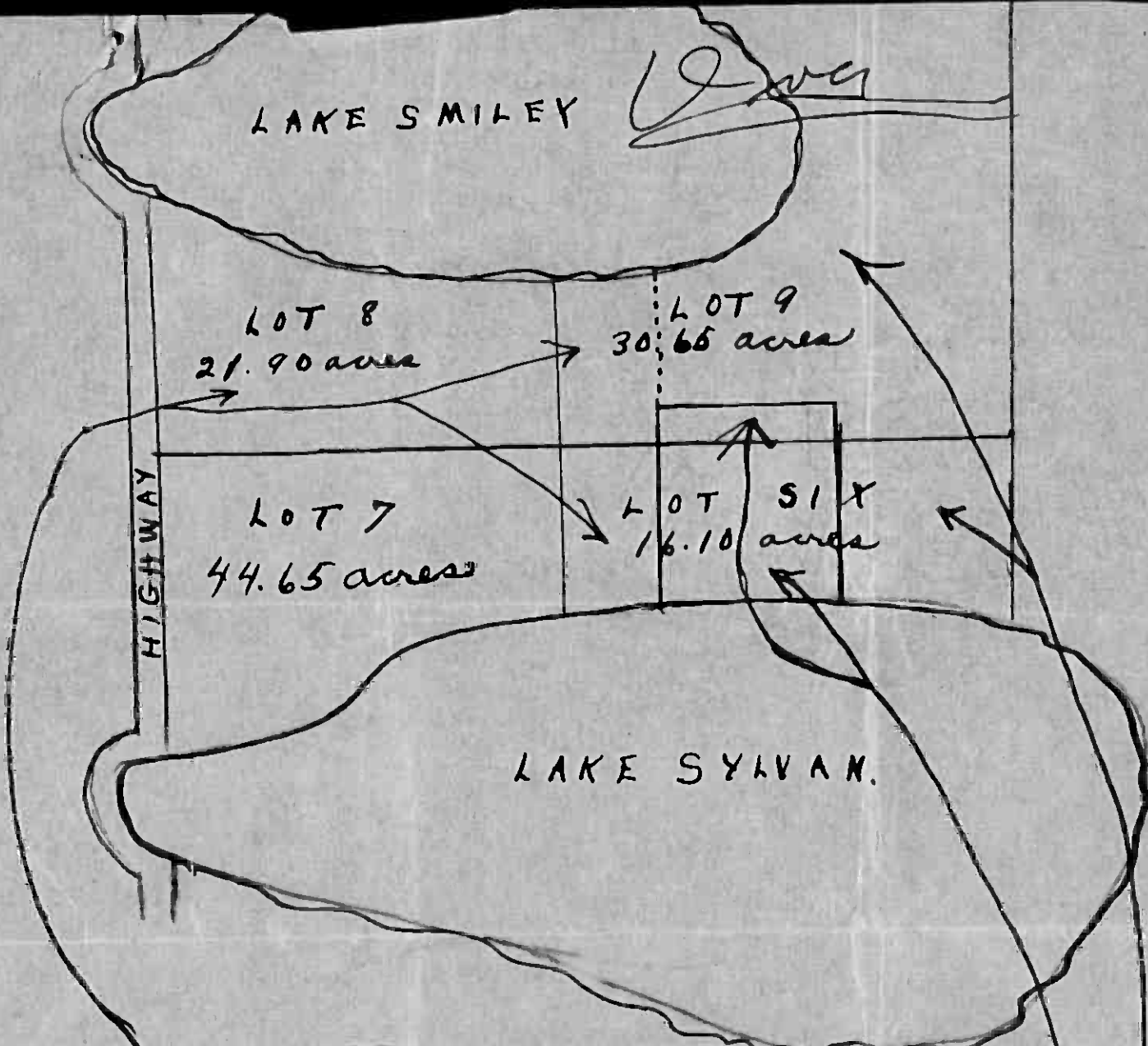
IN WHOSE NAME ASSESSED	TO WHOM TRANSFERRED	Sold for Taxes	SUB-DIVISION	No. of Acres		VALUATION	No. School Dist.	GENERAL TAXES	School District	School District	School District	
				Sec. or Lot	Town or Block				No. Rate	No. Rate	No. Rate	
C.H. Baldwin	Central Union Trust Co., N.Y.		NE 1/4 of NE 1/4	18	29	40					129	
			NW 1/4 of NE 1/4			40					123	
				SW 1/4 of NE 1/4			40					123
C.H. Baldwin				SE 1/4 of NE 1/4			40					227
C.B. Moffett			NE 1/4 of NW 1/4 Lot 2			37	05				144	
Fred Doerr			NW 1/4 of NW 1/4									
C.B. Moffett			SW 1/4 of NW 1/4 Lot 3 less 12 1/2 rds. x 12 1/2 rds.			38	07				162	
Fred H. Kument			SE 1/4 of NW 1/4			40					227	
Christian H. Hendt			12 1/2 rds. x 12 1/2 rds. of Lot 3			98					33	
			NE 1/4 of SW 1/4			40					169	
			NW 1/4 of SW 1/4 E. 20.80 ac. of			20	80				52	
			SW 1/4 of SW 1/4 Lots 4 & 5									
			SE 1/4 of SW 1/4			40					148	
Mont Garton			1/2 80 acres of Lot 4 & 5			80					429	
Margaret Renck			NE 1/4 of SE 1/4			40					195	
Christian H. Hendt			NW 1/4 of SE 1/4			40					129	
			SW 1/4 of SE 1/4			40					154	
Margaret Renck			SE 1/4 of SE 1/4			40					205	
				616		90	2649					

Cass County, Minnesota, for Taxes for the Year 1932

Ditch No.	Ditch No.	Ditch No.	Ditch No.	TOTAL TAXES	PAID	WHEN PAID	Number of Receipt	March Settlement	June Settlement	Penalty	November Settlement	Penalty	Collections to First Monday in January	Penalty	Delinquent on First Monday in January	REMARKS
				1528	1											
				1457	2	PAID IN FULL	MAY 31 1933								1671	1528-1.43
				1457	3	PAID IN FULL	MAY 31 1933			4468						
				2688	4										2939	2688-2.51
					5											
				1705	6										1864	1705-1.59
					7											
				1919	8											
				2688	9										2939	2688-2.51
				391	10	PAID IN FULL	APR 30 1933									
				2001	11	PAID IN FULL	DEC 30 1933									
				616	12	PAID IN FULL	DEC 30 1933			7775					3146	Account
					13											
				1753	14	PAID IN FULL	DEC 30 1933									
				5081	15	PAID IN FULL	OCT 4 1933			5959					5081	177
				2309	16	2nd Half Paid	OCT 17 1933			6432					1154	46
						1st Half Paid	JUL 6 1933			5418					1155	
				1528	17	DEL.	17 31 1934			5974						
				1824	18	DEL.	17 31 1934									
				2428	19	2nd Half Paid	OCT 17 1933			6192					1214	49
						1st Half Paid	JUL 6 1933			5416					1214	
					20											
				31373					3305		9818		3146			







Sold to L. Edward Minette now of  
Ft. Dodge, Iowa about 35 1/2 acres

Sold to F. A. Suss now of  
Minneapolis, Minn. 10 acres

Sold to Bert Persons now of  
St. Paul Minn.  
About 27 acres.

Lots 6-7-8-9. Sec. 20-139-29



Tax List of Real Property in the Town of Ponto Lake

Cass County, Minnesota, for Taxes for the Year 1932

IN WHOSE NAME ASSESSED	TO WHOM TRANSFERRED	Sold for Taxes	SUB-DIVISION	Sec. of Lot	Town or Block	No. of Acres		VALUATION	No. School Dist.	GENERAL TAXES	School District	School District	School District	Ditch No.	Ditch No.	Ditch No.	Ditch No.	TOTAL TAXES	PAID	WHEN PAID	Number of Receipt	March Settlement	June Settlement	Penalty	November Settlement	Penalty	Collections to First Monday in January	Penalty	Delinquent on First Monday in January	REMARKS				
						No. Rate	No. Rate				No. Rate	Rate	Rate																		Rate	Rate	Rate	Rate
Annie Anyon	L. Edward Minette		NE 1/4 of NE 1/4	Lot 8	20	139 29	21 90	49										580	1st Half Paid	OCT 31 1933	694 98													
			NW 1/4 of NE 1/4	" 7			44 65	137										1622	2nd Half Paid	MAY 31 1933	45 90	7448	112											
			SW 1/4 of NE 1/4	" 6			16 10	43										309	1st Half Paid	OCT 31 1933	73 29													
			SE 1/4 of NE 1/4	" 9			30 65	77										912	2nd Half Paid	OCT 31 1933	69 49													
			NE 1/4 of NW 1/4																5															
Ava E. Lowe			NW 1/4 of NW 1/4	" 1		49 40	208										2463	2nd Half Paid	OCT 31 1933	68 14														
			SW 1/4 of NW 1/4	" 2		37 50	202										2392	1st Half Paid	MAY 31 1933	38 57														
			SE 1/4 of NW 1/4															9																
			NE 1/4 of SW 1/4	" 4			25 20	85										1007	PAID IN FULL	MAY 31 1933	36 85													
Walter I. Newman	C. De Ryan		NW 1/4 of SW 1/4	" 3		37 20	83										983	2nd Half Paid	OCT 31 1933	68 57														
			SW 1/4 of SW 1/4	" 3		40 50	200										2369	1st Half Paid	DEC 1 1933	76 03														
Flora E. De Jarlais	Mrs. W. Hecker		SE 1/4 of SW 1/4			40	77										912	2nd Half Paid	DEC 2 1933	76 28														
			NE 1/4 of SE 1/4			40	101											1196	1st Half Paid	OCT 31 1933	72 46													
Joseph O. De Jarlais	Ann. J. Hoy		NW 1/4 of SE 1/4	" 5		37 45	81										2444	2nd Half Paid	OCT 31 1933	51 63														
			SW 1/4 of SE 1/4			40	92											1090	1st Half Paid	JUN 29 1933														
J. A. Huss			SE 1/4 of SE 1/4			40	223											1457																
																		20																
						500 05	1608										19636																	
																		6777	8316	1996														

\$3.55 is still due on Lot 8.

~~All~~ Lots 6 & 9 are paid in full.

Does not appear that F. A. Suss  
paid any of same.

Bert Parsons tax paid.







Tax List of Real Property in the Town of Ponto Lake

Cass County, Minnesota, for Taxes for the Year 1932

IN WHOSE NAME ASSESSED	TO WHOM TRANSFERRED	Sold for Taxes	SUB-DIVISION	No. of Acres		VALUATION	No. School Dist.	GENERAL TAXES	School District	School District	School District	Ditch No.	Ditch No.	Ditch No.	Ditch No.	TOTAL TAXES	PAID	WHEN PAID	Number of Receipt	March Settlement	June Settlement	Penalty	November Settlement	Penalty	Collections to First Monday in January	Penalty	Delinquent on First Monday in January	REMARKS										
				No. Rate	No. Rate				No. Rate	Rate	Rate																		Rate	Rate	Rate	Rate	Rate	Rate	Rate	Rate	Rate	Rate
Am. J. Raines			NE 1/4 of NE 1/4	24	139	29	40	123								1457	1											15 93	14 57	1.36								
"			NW 1/4 of NE 1/4				40	111								1315	2											14 38	13 15	1.23								
D. M. Clough			SW 1/4 of NE 1/4				40	123								1457	3																					
Am. J. Raines			SE 1/4 of NE 1/4				40	77								912	4											9 97	9 20	.85								
																	5																					
J. B. Walker			NE 1/4 of NW 1/4				40	123								1457	6																					
"			NW 1/4 of NW 1/4				40	123								1457	7																					
Marie Katherine Lawkner			SW 1/4 of NW 1/4				40	123								1457	8																					
J. D. Clark			SE 1/4 of NW 1/4				40	149								1765	9																					
																	10																					
Warren W. Kimball			NE 1/4 of SW 1/4				40	123								1457	11																					
Timothy Murphy			NW 1/4 of SW 1/4				40	139								1646	12											18 00	16 46	1.54								
"			SW 1/4 of SW 1/4				40	135								1599	13											17 48	15 99	1.49								
J. B. Walker			SE 1/4 of SW 1/4				40	123								1457	14																					
																	15																					
Cuyuna Ore Lands Co.			NE 1/4 of SE 1/4				40	123								1457	16																					
J. B. Walker			NW 1/4 of SE 1/4				40	123								1457	17																					
"			SW 1/4 of SE 1/4				40	123								1457	18																					
Keyserhauser et al			SE 1/4 of SE 1/4				40	123								1457	19																					
																	20																					
							640	1964																														
																20264																						

PAID IN FULL MAY 31 1933  
 DEL. 14 1932  
 1st Half Paid MAY 21 1932

4298  
 1457  
 883

20264

2340









Tax List of Real Property in the Town of Ponto Lake

IN WHOSE NAME ASSESSED	TO WHOM TRANSFERRED	Sold for Taxes	SUB-DIVISION	Sec. or Lot	Town or Block	No. of Acres		VALUATION	No. School Dist.	GENERAL TAXES	School District	School District	School District					
						Rate	No.				Rate	No.	Rate	No.				
										Mills			Mills			Mills		
										cts.	\$	cts.	\$	cts.	\$	cts.		
										Dollars			Dollars			Dollars		
Frances N. Fowler			<del>7.175' of Lot 3</del>	28	139	29	58	8										
Olaf O. Ravick			<del>8.225' of Lot 3</del>															
			<del>of Lot 3</del>				92	52										
S.J. Reader			<del>7.600' of Lot 3</del>				12	267										
			NE 1/4 of NW 1/4															
Michael Smith			NW 1/4 of NW 1/4 Lot 1				8.50	110										
			SW 1/4 of NW 1/4															
			SE 1/4 of NW 1/4															
M.M. Thompson			<del>7.3 ac. of Lot 2</del>				3	26										
			NW 1/4 of SW 1/4															
Fred McLaugh			SW 1/4 of SW 1/4 Lot 2 less trees				42.25	208										
B.B. Strayer			<del>SW 1/4 of SW 1/4</del>															
Wm. C. Conroy			1 acre of Lot 2				1	69										
A.E. Glenn			NE 1/4 of SE 1/4															
			NW 1/4 of SE 1/4															
Metzroth Clothing Co			<del>SW 1/4 of SE 1/4</del> 8.537.4' of Lot 3				13.16	56										
Sarah L. Carpenter			<del>SW 1/4 of SE 1/4</del> 8.200' of 7.600' of Lot 3				1.34	114										
Lily Westfall			7.377.9' of 8.1512.6' of Lot 3 (approx 1 acre)				8	40										
							90.75	1022										

Cass County, Minnesota, for Taxes for the Year 1932

Ditch No.	Ditch No.	Ditch No.	Ditch No.	TOTAL TAXES	PAID	WHEN PAID	Number of Receipt	March Settlement	June Settlement	Penalty	November Settlement	Penalty	Collections to First Monday in January	Penalty	Delinquent on First Monday in January	REMARKS
Dollars																
Month Day Year																
				95	1											1.04 95.09
				616	3	PAID IN FULL	OCT 3 1932	64.34					616	22		
				3162	4	PAID IN FULL	APR 11 1933	25.33					3162			
				1303	7	2nd Half PAID	OCT 27 1933	33.50					651		652	
				308	11										3.39	308.29
				2463	13	2nd Half PAID	OCT 14 1933	60.37					1231		1232	
				817	15	1st Half PAID	MAY 18 1933	28.06								
				663	18	PAID IN FULL	MAR 27 1933	19.11					817			
				2203	19	PAID IN FULL	MAY 10 1933	28.29					663			
				474	20										24.09	22.03 2.06
				12104					817	59.07		2500				

Tax List of Real Property in the Town of Ponto Lake

IN WHOSE NAME ASSESSED	TO WHOM TRANSFERRED	Sold for Taxes	SUB-DIVISION	Sec. of Lot	Town or Block	No. of Acres		VALUATION	No. School Dist.	GENERAL TAXES	School District	School District	School District
						Rate	Rate				Rate	No.	No.
						Dollars	cts.	cts.	cts.	cts.	cts.	cts.	
Mabel Middleton			NE 1/4 of NE 1/4 Lot 1	29	139	29	95	123					
Ann. J. Hoy			NW 1/4 of NE 1/4			40		123					
Alfred E. Reese			SW 1/4 of NE 1/4			40		123					
Mabel Middleton			SE 1/4 of NE 1/4 " 2			34	90	108					
N.P. Ry. Co.			NE 1/4 of NW 1/4			40		123					
John Genst			NW 1/4 of NW 1/4			40		123					
"			SW 1/4 of NW 1/4			40		123					
St. Paul & Chicago Ry. Co.			SE 1/4 of NW 1/4			40		123					
J. I. Edwards			NE 1/4 of SW 1/4			40		77					
John Genst			NW 1/4 of SW 1/4 " 4			32	20	99					
J. I. Edwards			SW 1/4 of SW 1/4 " 5			46	75	133					
			SE 1/4 of SW 1/4										
Mabel Middleton			NE 1/4 of SE 1/4 " 3			39	10	120					
Morris Kruckow			NW 1/4 of SE 1/4			40		194					
"			SW 1/4 of SE 1/4			40		61					
Norman J. Kruckow			SE 1/4 of SE 1/4			40		83					
						592	90	1736					

Cass County, Minnesota, for Taxes for the Year 1932

Ditch No.	Ditch No.	Ditch No.	Ditch No.	TOTAL TAXES	PAID	WHEN PAID	Number of Receipt	March Settlement	June Settlement	Penalty	November Settlement	Penalty	Collections to First Monday in January		Delinquent on First Monday in January		REMARKS	
													\$	cts.	\$	cts.		\$
				Dollars	cts.	Month	Day	Year	\$	cts.	\$	cts.	\$	cts.	\$	cts.		
				1457	1	PAID IN FULL	MAY 25	1933	3144									
				1457	2													1593 1457 136
				1457	3													
				1279	4	PAID IN FULL	MAY 25	1933	3144									
				1457	6													
				1457	7	2nd Half Paid	OCT 31	1933										
				1457	8	1st Half Paid	MAY 31	1933	6651									
				1457	8	2nd Half Paid	OCT 31	1933	3498									
				1457	9	1st Half Paid	MAY 31	1933										
				912	11													997 912 .85
				1172	12	PAID IN FULL	MAY 29	1933	3497									
				1575	13	PAID IN FULL	MAY 31	1933	3311									
				1421	16	PAID IN FULL	MAY 25	1933	3144									
				2298	17	2nd Half Paid	OCT 30	1933										
				722	18	1st Half Paid	MAY 19	1933	6903									
				983	19	2nd Half Paid	OCT 27	1933	6304									
					19	1st Half Paid	MAY 5	1933	6769									
				20561					10662	3159								









Tax List of Real Property in the Town of Ponto Lake

IN WHOSE NAME ASSESSED	TO WHOM TRANSFERRED	Sub-division	Sec. or Lot	Town or Block	No. of Acres		VALUATION	No. School Dist.	GENERAL TAXES	School District	School District	School District
					100's	100's				No. Rate	No. Rate	No. Rate
Metzroth Clothing Co., Inc.		NE 1/4 of NE 1/4 Lot 1			33	139	29	38				148
Evert Hall		NW 1/4 of NE 1/4										
Frank R. Anderson		SE 1/4 of NE 1/4				21	80					67
Hazel Johnson		SE 1/4 of NE 1/4				40						123
A. O. Boehm		SE 1/4 of NE 1/4				21	80					67
Ernest Siltman		SW 1/4 of NW 1/4				47	20					168
"		NW 1/4 of NW 1/4				40						123
"		SW 1/4 of NW 1/4				19	10					58
M. & N. L. Dorthby, A.E. Glenn, G.W. Berber		2 acres of Lot 3				2						83
Farmer's State Bk., Pine River		NE 1/4 of SW 1/4 Lot 5				32	55					100
Thomas L. Pinckney		NW 1/4 of SW 1/4										
Farmer's St. Bk., Pine River		SW 1/4 of SW 1/4				29	50					103
"		SE 1/4 of SW 1/4				40						135
"		NE 1/4 of SE 1/4				40						129
Lucie Shepard		NW 1/4 of SE 1/4				40						117
"		SW 1/4 of SE 1/4				40						140
Farmer's St. Bk., Pine River		SE 1/4 of SE 1/4				40						123
						491	25					1788

Cass County, Minnesota, for Taxes for the Year 1932

Ditch No.	Ditch No.	Ditch No.	Ditch No.	TOTAL TAXES	PAID	WHEN PAID	Number of Receipt	March Settlement	June Settlement	Penalty	November Settlement	Penalty	Collections to First Monday in January	Penalty	Delinquent on First Monday in January	REMARKS
				1753		Balance Paid May 31 1933 390 ✓				450 ✓						450 balance
				793	3	PAID IN FULL MAY 8 1933	4120 ✓			793 ✓						
				1457	4											
				2025	5	PAID IN FULL MAY 23 1933	2998 ✓			2025 ✓			12	32	Ref 1/27/33 1/50 453 Abatement No. 2101	
				1990	6	PAID IN FULL MAY 8 1933	3838 ✓			1990 ✓						
				1457	7											1593 1457 1.36
				687	8											757 687 64
				983	10	PAID IN FULL MAR 27 1933	1911 ✓			983 ✓						
				1184	11											
				1220	13											1334 1220 1.14
				1599	14											
				1528	16											
				1386	17	PAID IN FULL DEC 4 1933	7462 ✓									3047 243
				1658	18	PAID IN FULL DEC 4 1933										
				1457	19											
					20											
				21177						983	6561					3044









Tax List of Real Property in the Town of Ponto Lake

IN WHOSE NAME ASSESSED	TO WHOM TRANSFERRED	Sold for Taxes	SUB-DIVISION	Sec. or Lot	Town or Block	No. of Acres		VALUATION	No. School Dist.	GENERAL TAXES	School District	School District	School District
						Rate	Rate				Rate		
			<i>Camp Blanche</i>										
			<i>Being all of Cont. Lot 5, Sec. 31-139-29</i>										
<i>R. M. Burrese &amp; Luella Burrese</i>				1	1			9					
"				1	2			9					
"				2				9					
"				3				9					
"				4				9					
"				5				9					
"				6				9					
"				7				9					
"				8				9					
"				9				9					
<i>Carl H. Olson</i>				8				9					
<i>R. M. Burrese &amp; Luella Burrese</i>				9				93					
				<del>9</del> 3				9					
				12									
				13									
				14									
				15									
				16									
				17									
				18									
				19									
				20									

123

Cass County, Minnesota, for Taxes for the Year 1932

Ditch No.	Ditch No.	Ditch No.	Ditch No.	TOTAL TAXES	PAID	WHEN PAID	Number of Receipt	March Settlement	June Settlement	Penalty	November Settlement	Penalty	Collections to First Monday in January		Delinquent on First Monday in January		REMARKS
													\$	cts.	\$	cts.	
				Dollars cts.		Month Day Year		\$ cts.	\$ cts.	\$ cts.	\$ cts.	\$ cts.	\$ cts.	\$ cts.	\$ cts.	\$ cts.	
				107	1												1 17 4 07 .10
				107	2												1 17 4 07 .10
				107	3												1 17 4 07 .10
				107	4												1 17 4 07 .10
				107	5												1 17 4 07 .10
				107	6												2 17 2 07 .10
				107	7												1 17 4 07 .10
				107	8												1 17 4 07 .10
				107	9												1 17 4 07 .10
				391	10												PAID IN FULL OCT 5 1932 6442 391 14
				107	11												2 17 1 07 .10
					12												
					13												
					14												
					15												
					16												
					17												
					18												
					19												
					20												

1461

391

Tax List of Real Property in the Town of Ponto Lake

IN WHOSE NAME ASSESSED	TO WHOM TRANSFERRED	Sold for Taxes	SUB-DIVISION	No. of Acres		VALUATION	No. School Dist.	GENERAL TAXES	School District	School District	School District
				Sec. or Lot	Town or Block				Rate	Rate	Rate
			Kinne Camp			Dollars					
Emmett A. Ruedy				1		25					
"				2		9					
Anna H. Huff				3		25					
Willie B. Combs & Nancy Lou Combs				4		58					
Fred J. Kuter				5		52					
Edith L. Muller				6		58					
Lloyd Paul				7		9					
"				8		9					
Josephine Black				9		52					
Calvin P. Corbett & Pearl Corbett				10		9					
Calvin P. Corbett				11		102					
W. A. Marienau				12		52					
Lloyd Paul				13		9					
"				14		9					
W. LaMont Kaufman & int, Geo. Miller & M. Mitchell & int				15		68					
Mary D. Miller				16		52					
Desley D. Miller & Mary R. Miller				17		52					
Lloyd Paul				18		9					
				19							
				20							
						702					

Cass County, Minnesota, for Taxes for the Year 1932

Ditch No.	Ditch No.	Ditch No.	Ditch No.	TOTAL TAXES	PAID	WHEN PAID	Number of Receipt	March Settlement	June Settlement	Penalty	November Settlement	Penalty	Collections to First Monday in January	Penalty	Delinquent on First Monday in January	REMARKS	
																	Dollars
				770	1	PAID IN FULL	FEB 25	1933	934	877							
				107	2	PAID IN FULL	FEB 25	1933									
				332	3	PAID IN FULL	FEB 24	1933	866	332							
				687	4	PAID IN FULL	APR 18	1933	587	687							
				676	5	PAID IN FULL	OCT 8	1933	7007				444			Discount	
				687	6	PAID IN FULL	AUG 7	1933	5799				687	17			
				107	7										117	107	10
				107	8										117	107	10
				616	9	PAID IN FULL	OCT 8	1933	7086				616	27			
				107	10	PAID IN FULL	FEB 25	1933	954	1315							
				1208	11	PAID IN FULL	FEB 25	1933									
				616	12										674	616	58
				107	13										117	107	10
				107	14										117	107	10
				805	15												
				616	16	PAID IN FULL	AUG 17	1933	5546				616	75			
				616	17	PAID IN FULL	AUG 17	1933	5547				616	15			
				107	18										117	107	10
					19												
					20												
				8318			2524	687	2979								

Tax List of Real Property in the Town of Ponto Lake

IN WHOSE NAME ASSESSED	TO WHOM TRANSFERRED	Sold for Taxes	SUB-DIVISION	No. of Acres		VALUATION	No. School Dist.	GENERAL TAXES	School District	School District	School District
				Sec. or Lot	Town or Block				No. Rate	No. Rate	No. Rate
			Ponto Point			Dollars					
			Lots 974, Sec 9-139-29								
Geo. J. Schottler				1	1	9					
"				2		9					
"				3		9					
"				4		9					
"				5		9					
"				6	1	9					
"				7		9					
"				8		9					
	Katie Miller			1	2	52					
"				2		9					
"				3		9					
"				4		9					
"				5		9					
"				6		9					
"				7		9					
"				8		9					
"				9		9					
"				10		9					
"				11		9					
"				12		9					
						223					

Cass County, Minnesota, for Taxes for the Year 1932

Ditch No.	Ditch No.	Ditch No.	Ditch No.	TOTAL TAXES	PAID	WHEN PAID	Number of Receipt	March Settlement	June Settlement	Penalty	November Settlement	Penalty	Collections to First Monday in January	Penalty	Delinquent on First Monday in January	REMARKS
107	1	PAID IN FULL	MAY 31	1933												
107	2	PAID IN FULL	MAY 31	1933												
107	3	PAID IN FULL	MAY 31	1933												
107	4	PAID IN FULL	MAY 31	1933	4294				852							
107	5	PAID IN FULL	MAY 31	1933												
107	6	PAID IN FULL	MAY 31	1933												
107	7	PAID IN FULL	MAY 31	1933												
107	8	PAID IN FULL	MAY 31	1933												
616	9	PAID IN FULL	MAY 31	1933	4294				616							
107	10	PAID IN FULL	MAY 31	1933												
107	11	PAID IN FULL	MAY 31	1933												
107	12	PAID IN FULL	MAY 31	1933												
107	13	PAID IN FULL	MAY 31	1933	4294				2321							
107	14	PAID IN FULL	MAY 31	1933												
107	15	PAID IN FULL	MAY 31	1933												
107	16	PAID IN FULL	MAY 31	1933												
107	17	PAID IN FULL	MAY 31	1933												
107	18	PAID IN FULL	MAY 31	1933												
107	19	PAID IN FULL	MAY 31	1933												
107	20	PAID IN FULL	MAY 31	1933												
				2649												



Tax List of Real Property in the Town of Ponto Lake

IN WHOSE NAME ASSESSED	TO WHOM TRANSFERRED	Sub- for Taxes	SUBDIVISION	Sec. or Lot	Town or Block	No. of Acres		VALUATION	No. School Dist.	GENERAL TAXES	School District	School District	School District
						Rtg.	Acres				100's	No.	Rate
						Dollars							
			Ponto Point Lots 3 & 4 Sec. 9-139-29										
Geo. J. Schottler				13	2			9					
"				14				9					
"				15				9					
"				16				9					
"				17				9					
"				18				52					
			Out Lot A.					9					
				19									
				20									

106

Cass County, Minnesota, for Taxes for the Year 1932

Ditch No.	Ditch No.	Ditch No.	Ditch No.	TOTAL TAXES	PAID	WHEN PAID	Number of Receipt	March Settlement	June Settlement	Penalty	November Settlement	Penalty	Collections to First Monday in January	Penalty	Delinquent on First Monday in January	REMARKS
				107	1	PAID IN FULL										
				107	2	PAID IN FULL										
				107	3	PAID IN FULL										4394 ✓
				107	4	PAID IN FULL										
				107	5	PAID IN FULL										
				616	6	PAID IN FULL										
				107	7	PAID IN FULL	MAY 31	1933		4294 ✓						1071 ✓
				8												
				9												
				10												
				11												
				12												
				13												
				14												
				15												
				16												
				17												
				18												
				19												
				20												

1258

107



Tax List of Real Property in the Town of Ponto Lake

IN WHOSE NAME ASSESSED	TO WHOM TRANSFERRED	Sold for Taxes	SUB-DIVISION	No. of Acres		VALUATION	No. School Dist.	GENERAL TAXES	School District	School District	School District
				Sec. or Lot	Town or Block				Reg. Acres	100%	No. Rate
S.D. Drake			Napawee Beach			9					
									21		
						9					

17

Cass County, Minnesota, for Taxes for the Year 1932

Ditch No.	Ditch No.	Ditch No.	Ditch No.	TOTAL TAXES	PAID	WHEN PAID	Number of Receipt	March Settlement	June Settlement	Penalty	November Settlement	Penalty	Collections to First Monday in January	Penalty	Delinquent on First Monday in January	REMARKS	
																	Dollars
				107													
				107													

217

Tax List of Real Property in the Town of Ponto Lake

Cass County, Minnesota, for Taxes for the Year 1932

IN WHOSE NAME ASSESSED	TO WHOM TRANSFERRED	Sold for Taxes	SUB-DIVISION	Sec. or Lot	Town or Block	No. of Acres		VALUATION	No. School Dist.	GENERAL TAXES	School District	School District	School District	Ditch No.	Ditch No.	Ditch No.	Ditch No.	TOTAL TAXES	PAID	WHEN PAID	Number of Receipts	March Settlement	June Settlement	Penalty	November Settlement	Penalty	Collections to First Monday in January	Penalty	Delinquent on First Monday in January	REMARKS			
						No. Rate	No. Rate				No. Rate	No. Rate	No. Rate																		No. Rate	No. Rate	No. Rate
								Dollars										Dollars		Month	Day	Year											
Adolph A. Uhlig			Plat of East Shore Part of Lot 4, Sec. 10-139-29	1				69										107															
"				2				69										107															
"				3				69										107															
"				4				69										107															
"				5				69										107															
"				6				69										107															
"				7				69										107															
"				8				69										107															
"				9				69										107															
"				10				69										107															
"				11				69										107															
"				12				69										107															
"				13				69										107															
"				14				69										107															
"				15				69										107															
"				16				69										107															
"				17				69										107															
"				18				69										107															
"				19				69										107															
"				20				69										107															
								170									1450																
								180									2140																

See Abatement No 2158.  
 Pay \$14 for  
 134 lots  
 Nov 1 to 23  
 26 to 351 Lake

Tax List of Real Property in the Town of Ponto Lake

IN WHOSE NAME ASSESSED	TO WHOM TRANSFERRED	Sold for Taxes	SUB-DIVISION	Sec. or Lot	Town or Block	No. of Acres		VALUATION	No. School Dist.	GENERAL TAXES	School District	School District	School District
						Rng.	Acres				100's	No. Rate	No. Rate
East Shore													
Dollars													
cts. \$ cts. \$ cts. \$ cts.													
A. A. Uhlig				21				69					
"				22				69					
"				23				69					
Ralph Henry Burwell				24				9					
"				25				9					
A. A. Uhlig				26				69					
"				27				69					
"				28				69					
"				29				69					
"				30				69					
"				31				69					
"				32				69					
"				33				69					
"				34				69					
"				35				69					
"				36				9					
"				37				9					
H. M. Sjerke				38				78					
"				39				9					
								240					

Cass County, Minnesota, for Taxes for the Year 1932

Ditch No.	Ditch No.	Ditch No.	Ditch No.	TOTAL TAXES	PAID	WHEN PAID	Number of Receipt	Marsh Settlement	June Settlement	Penalty	November Settlement	Penalty	Collections to First Monday in January	Penalty	Delinquent on First Monday in January	REMARKS
107				107												Abatement #2158
107				107												As
107				107												As
107				107	PAID IN FULL	MAY 31 1933		4876 ✓				214 ✓				
107				107	PAID IN FULL	MAY 31 1933										
107				107												
107				107												
107				107												
107				107												
107				107												
107				107												
107				107												
107				107												
107				107	PAID IN FULL	FEB 16 1933		649 ✓				214 ✓				
107				107	PAID IN FULL	FEB 16 1933										
824				824	PAID IN FULL	MAY 31 1933		4370 ✓				1035 ✓				
107				107	PAID IN FULL	MAY 31 1933										
28 50																
214 12 45																

