

ASSESSMENT & TAX LIST - 1960

Ponto Lake

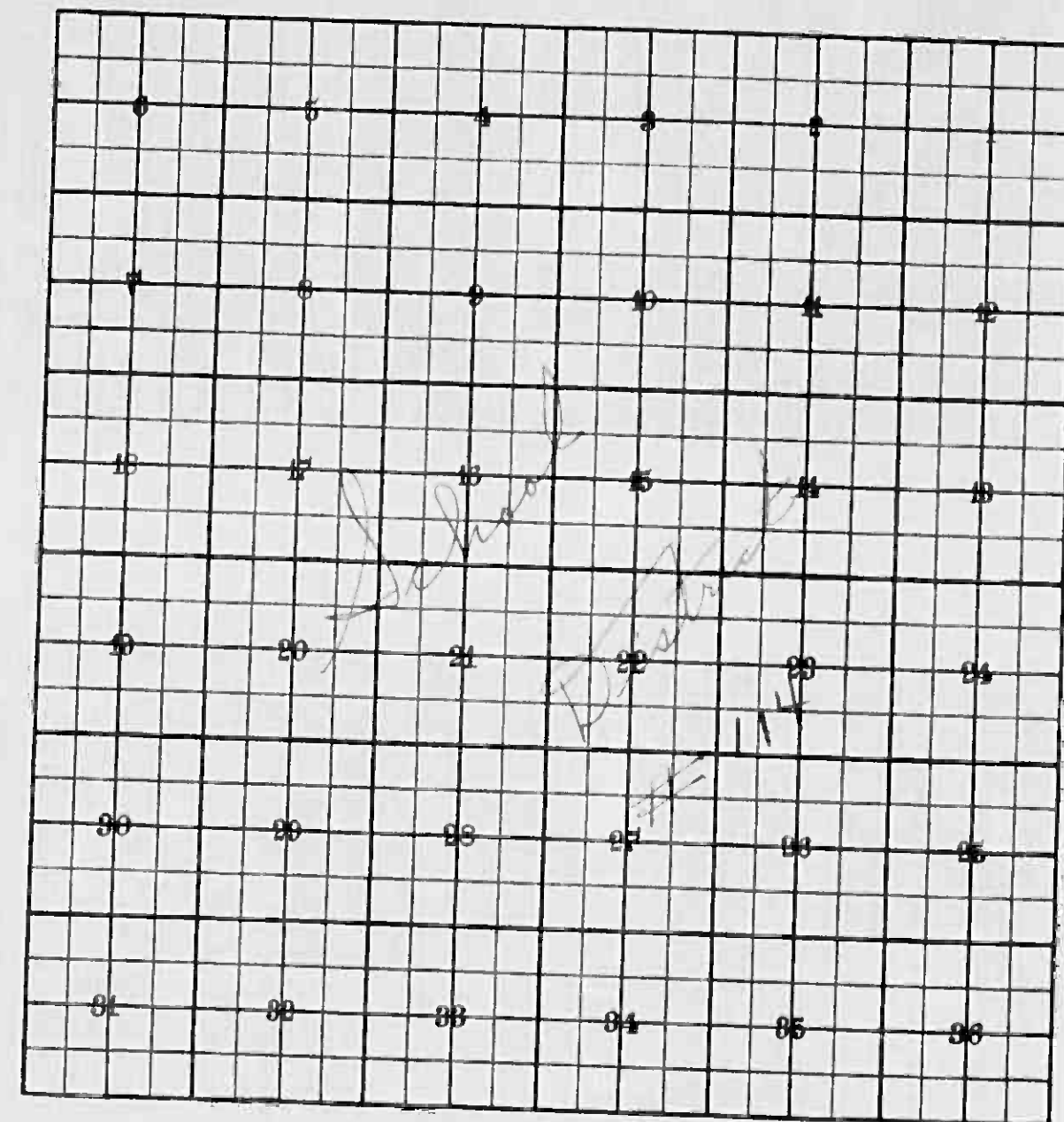
INDEX TO SECTIONS

SECTION PAGE

Sec. 1	
" 2	
" 3	
" 4	
" 5	
" 6	
" 7	
" 8	
" 9	
" 10	
" 11	
" 12	
" 13	
" 14	
" 15	
" 16	
" 17	
" 18	
" 19	
" 20	
" 21	
" 22	
" 23	
" 24	
" 25	
" 26	
" 27	
" 28	
" 29	
" 30	
" 31	
" 32	
" 33	
" 34	
" 35	
" 36	

For Convenience of Auditor in Showing Boundaries of School Districts

Township No. 137 Range No. 29 Mer. P. M.



Returns Showing Grain Received in or Handled by Elevators, Warehouses and Mills in the _____ of _____ in the _____
County of _____ for the Year Ending May 1, 1960.

MILLER DAVIS CO. MINNEAPOLIS	NAMES OF OWNERS	ADDRESS	Bushels of Wheat	Bushels of Soy Beans	Bushels of Flax	Total No. of Bushels of Wheat, Soy Beans and Flax	★ Tax of 1/2 Mill per Bushel		Bushels of Corn	Bushels of Barley	Bushels of Rye	Bushels of Oats	Bushels of Buckwheat	Bushels of all Other Grains	Total No. Bushels Corn, Barley, Rye, Oats, Buckwheat and all Other Grains	★ Tax of 1/4 Mill Per Bushel		★ Total Tax		REMARKS			
							Dollars	Cts.								Dollars	Cts.	Dollars	Cts.				

Note ★ Assessors will not fill these Columns

Real Estate
Ponto Point
Naperville
Flat of
Ada Pine
North Shore
Green 1st. Mt.

SUMMARY OF TAX COLLECTION

Original Levy	- - - - -	\$ 17,529.12
Additions	- - - - -	\$ <u>53.74</u>
		\$ 17,582.86
Abatements	- - - - -	\$ <u>298.80</u>
		\$ 17,284.06

COLLECTIONS

March Settlement	- - - - -	\$ 2,861.82
June Settlement	- - - - -	\$ 10,804.98
November Settlement	- - - - -	\$ 3,090.73
January Settlement	- - - - -	\$ <u>2.96</u> \$ 16,760.50
		\$ _____
Over Collected	- - - - -	\$ <u>72.71</u>
Under Collected	- - - - -	\$ _____
Delinquent	- - - - -	\$ <u>596.27</u> \$ 523.56
Total	- - - - -	\$ 17,284.06

Red Estate

Map Point Point Beach Repairs Flat of Salt Shore Ada Pine North Shore Green 1st. Add.

Assessment Roll and Tax List of Real Property in the Town of Ponto Lake

* Indicate Type of Property: R-Residential, C-Commercial, I-Industrial, U-Utility, F-Farm, L-Lakeshore, T-Timber, M-Mineral

Cass County, Minnesota, for Taxes for the Year 1960.

Table with columns: IN WHOSE NAME ASSESSED, DESCRIPTION OF PROPERTY, TRUE AND FULL VALUATIONS, ASSESSED VALUATIONS, VALUATIONS BY SCHOOL DISTRICTS AS EQUALIZED BY DEPARTMENT OF TAXATION, SPECIAL TAXES, PAID, WHEN PAID, Number of Receipt, March Settlement 1961, June Settlement 1961, November Settlement 1961, Collections to First Monday in January 1962, Delinquent on First Monday in January 1962, Total Delinquent Tax and Penalty, REMARKS.

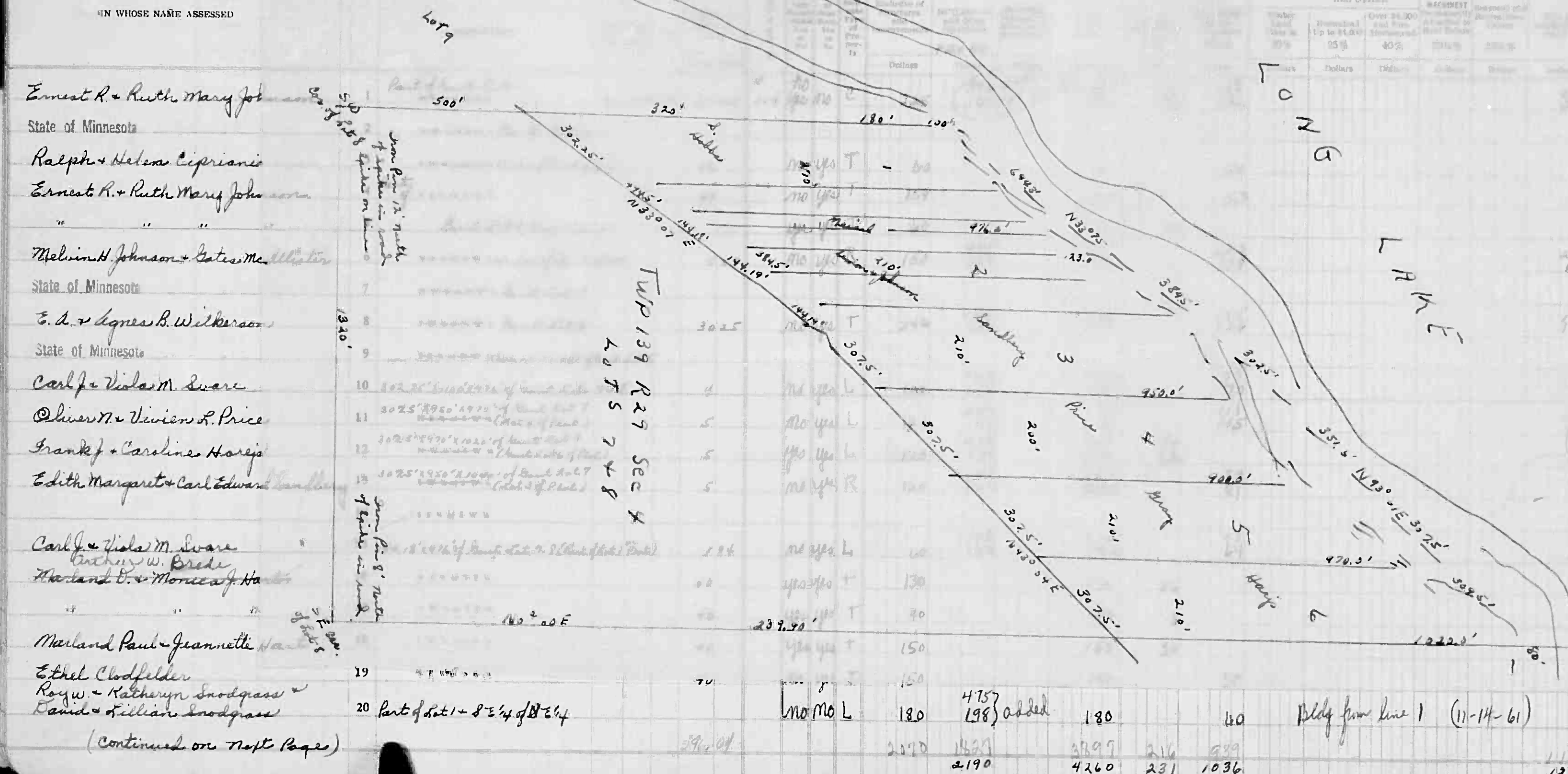
Continued on next page

Frank R. & Helen Jordan

8.00 refunded 10.92 abated

Assessment Roll and Tax List

Indicate Type of Property by Initials: U-Utility, P-Popular, L-Lakefront, T-Timber, M-Mineral



IN WHOSE NAME ASSESSED

Ernest R. & Ruth Mary Johnson
State of Minnesota

Ralph & Helen Cipriani
Ernest R. & Ruth Mary Johnson

Melvin H. Johnson & Gates McAllister
State of Minnesota

E. A. & Agnes B. Wilkerson
State of Minnesota

Carl & Viola M. Sware
Oliver M. & Vivian L. Price
Frank & Caroline Horejs
Edith Margarete & Carl Edward Swanson

Carl & Viola M. Sware
Richard W. Bredt
Harland E. & Monice A. Hart

Marland Paul & Jeannette Hart

Ethel Clodfelder
Roy W. & Kathryn Snodgrass
David & Lillian Snodgrass

(Continued on Next Page)

Lot No.	Assessed Value	Final Equalized Value	Assessed Value	Final Equalized Value	Assessed Value	Final Equalized Value
1	1196	1460	1196	1460	1196	1460
2	482	482	482	482	482	482
3	1276	1276	1276	1276	1276	1276
4	288	288	288	288	288	288
5	4888	4888	4888	4888	4888	4888
6	3250	3250	3250	3250	3250	3250
7	1854	1854	1854	1854	1854	1854
8	2842	2842	2842	2842	2842	2842
9	2686	2686	2686	2686	2686	2686
10	2144	2144	2144	2144	2144	2144
11	482	482	482	482	482	482
12	1358	1358	1358	1358	1358	1358
13	626	626	626	626	626	626
14	192	192	192	192	192	192
15	722	722	722	722	722	722
16	1204	1204	1204	1204	1204	1204
17	6858	6858	6858	6858	6858	6858
18	7010	7010	7010	7010	7010	7010
19	1460	1460	1460	1460	1460	1460
20	23212	23212	23212	23212	23212	23212

Assessed Value as based by Board of Review

FINAL EQUALIZED VALUE

Assessed Value as based by Board of Review

FINAL EQUALIZED VALUE

Cass County, Minnesota, for Taxes for the Year 1960

SOLD FOR TAXES	VALUATIONS BY SCHOOL DISTRICTS AS EQUALIZED BY DEPARTMENT OF TAXATION						Tax including State Homestead	State Tax on Non-Homestead	SPECIAL TAXES	SPECIAL TAXES	TOTAL TAXES	PAID	WHEN PAID	Number of Receipt	March Settlement 1961	June Settlement 1961	November Settlement 1961	Collections to First Monday in January 1962	Delinquent on First Monday in January 1962	Total Delinquent Tax and Penalty	REMARKS
	District No.	District No.	District No.	District No.	District No.	District No.															
1	714	714	714	714	714	714	1196	1460			1196	1460	1	PAID	MAY 17 1961	8142		3285		Refunded 11-24-61 \$20.89 w/ ch # 55319 53.74 Cans. 9827	
2							482	482			482	482	3	PAID IN FULL	MAY 12 1961	7986		496		9247	
3							1276	1276			1276	1276	4	PAID IN FULL	MAY 17 1961	8142		657		9132	
4							288	288			288	288	5	PAID IN FULL	MAY 17 1961	8142		144			
5							4888	4888			4888	4888	6	PAID IN FULL	MAY 9 1961	9068		5030		2733	
6							3250	3250			3250	3250	8	PAID IN FULL	MAY 12 1961	9321		3344		2880	
7							1854	1854			1854	1854	10	PAID IN FULL	APR 26 1961	8666		1908		2048	
8							2842	2842			2842	2842	11					2924		1623	
9							2686	2686			2686	2686	12	PAID IN FULL	JAN 31 1961	291	1686				5867
10							2144	2144			2144	2144	13	PAID IN FULL	FEB 17 1961	921	2246				2866
11							482	482			482	482	14								
12							1358	1358			1358	1358	15	PAID IN FULL	APR 26 1961	2666		1810		13.14 Added	1624
13							626	626			626	626	16	PAID IN FULL	MAY 11 1961			626			7134
14							192	192			192	192	17	PAID IN FULL	MAY 17 1961	99.9		192			
15							722	722			722	722	18	PAID IN FULL	MAY 17 1961			722			
16							1204	1204			1204	1204	19	2nd HALF PAID	OCT 19 1961	1783		620			2823
17							6858	6858			6858	6858	20	PAID IN FULL	APR 26 1961	8615		1636		53.74	16025
18							7010	7010			7010	7010						3892	20470	69.95	15.14 added
19							1460	1460			1460	1460									34.03 Refund
20							23212	23212			23212	23212									53.74 added

Assessed Value as based by Board of Review

FINAL EQUALIZED VALUE

Assessed Value as based by Board of Review

FINAL EQUALIZED VALUE

Assessment Roll and Tax List of Real Property in the Town of Pointe Lake

* Indicate Type of Property: R-Residential, C-Commercial, I-Industrial, U-Utility, F-Farm, L-Lakeshore, T-Timber, M-Mineral

Cass County, Minnesota, for Taxes for the Year 1960.

Table with columns: IN WHOSE NAME ASSESSED, DESCRIPTION OF PROPERTY, TRUE AND FULL VALUATIONS, ASSESSED VALUATIONS, VALUATIONS BY SCHOOL DISTRICTS AS EQUALIZED BY DEPARTMENT OF TAXATION, TAXES, SPECIAL TAXES, TOTAL TAXES, PAID, WHEN PAID, Number of Receipt, March Settlement 1961, June Settlement 1961, November Settlement 1961, Collections to First Monday in January 1962, Delinquent on First Monday in January 1962, Total Delinquent Tax and Penalty, REMARKS.

Continued on next page

Camp Blanche, Kansas Camp, Pointe Lake, Japanese Beach, Flat of Beach, Ada Pine, North Shore, Degrass 1st, Add'l

Assessment Roll and Tax List of Real Property in the Town of Ponto Lake

Form 50-D, MILLER-DAVIS CO., MINNEAPOLIS

* Indicate Type of Property: R-Residential, C-Commercial, I-Industrial, U-Utility, F-Farm, L-Lakeshore, T-Timber, M-Mineral

Table with columns: IN WHOSE NAME ASSESSED, DESCRIPTION OF PROPERTY, TRUE AND FULL VALUATIONS, ASSESSED VALUATIONS, and FINAL EQUALIZED VALUE. Includes handwritten entries for various property owners like Warren N. Kack and Kathryn W. Greene.

Cass County, Minnesota, for Taxes for the Year 1960.

Table with columns: VALUATIONS BY SCHOOL DISTRICTS AS EQUALIZED BY DEPARTMENT OF TAXATION, TAXES, PAID, WHEN PAID, and REMARKS. Includes handwritten notes and tax payment records for various districts.

Assessment Roll and Tax List of Real Property in the Town of Pointe Lake

* Indicate Type of Property: R-Residential, C-Commercial, I-Industrial, U-Utility, F-Farm, L-Lakeshore, T-Timber, M-Mineral

Table with columns: IN WHOSE NAME ASSESSED, DESCRIPTION OF PROPERTY, TRUE AND FULL VALUATIONS, ASSESSED VALUATIONS, and FINAL EQUALIZED VALUE. Includes entries for State of Minnesota and various individuals like Joseph W. & Eleanor R. Wicklund.

Cass County, Minnesota, for Taxes for the Year 1960.

Table with columns: VALUATIONS BY SCHOOL DISTRICTS AS EQUALIZED BY DEPARTMENT OF TAXATION, Tax Including State Homestead, State Tax on Non-Homestead, SPECIAL TAXES, PAID, WHEN PAID, Number of Receipt, March Settlement, June Settlement, November Settlement, Penalty, Collections to First Monday in January, Delinquent on First Monday in January, Total Delinquent Tax and Penalty, REMARKS. Includes handwritten notes like 'PAID IN FULL FEB 28 1961'.

Vertical text on the right edge of the page: Camp Blanchette, Kinne Camp, Pointe Point, Beach, Fair Shore, Ada Pine, Birch Shore, Agrass Ist., Add'l.

Assessment Roll and Tax List of Real Property in the Town of Ponts Lake

Cass County, Minnesota, for Taxes for the Year 1960.

Form 511D MILLER-DAVIS CO., MINNEAPOLIS

* Indicate Type of Property: R-Residential, C-Commercial, I-Industrial, U-Utility, F-Farm, L-Lakeshore, T-Timber, M-Mineral

Table with columns: IN WHOSE NAME ASSESSED, DESCRIPTION OF PROPERTY, TRUE AND FULL VALUATIONS, ASSESSED VALUATIONS, VALUATIONS BY SCHOOL DISTRICTS AS EQUALIZED BY DEPARTMENT OF TAXATION, TAXES, PAID, WHEN PAID, Number of Receipt, March Settlement 1961, June Settlement 1961, November Settlement 1961, Collections to First Monday in January 1962, Delinquent on First Monday in January 1962, Total Delinquent Tax and Penalty, REMARKS.

Camp Blanche, Kame Camp, Ponts Lake, Harpisee Beach, Flat of, Ada Pine, North Shore, Grass 1st. Add.

Assessment Roll and Tax List of Real Property in the Town of Ponton Lake

Table with columns: IN WHOSE NAME ASSESSED, DESCRIPTION OF PROPERTY, TRUE AND FULL VALUATIONS, ASSESSED VALUATIONS, VALUATIONS BY SCHOOL DISTRICTS AS EQUALIZED BY DEPARTMENT OF TAXATION, TAX INCLUDING STATE HOMESTEAD, STATE TAX ON NON-HOMESTEAD, SPECIAL TAXES, TOTAL TAXES, PAID, WHEN PAID, Number of Receipt, March Settlement 1961, June Settlement 1961, November Settlement 1961, Collections to First Monday in January 1962, Delinquent on First Monday in January 1962, Total Delinquent Tax and Penalty, REMARKS.

(Continued on Next Page)

Camp Blanche, Kline Camp, Ponton Point Beach, Japanese Flat of Beach, Adm Pine North Shore, Grass 1st. Add'n

Assessment Roll and Tax List of Real Property in the Town of Ponto Lake of Ponto Lake

* Indicate Type of Property: R-Residential, C-Commercial, I-Industrial, U-Utility, F-Farm, L-Lakeshore, T-Timber, M-Mineral

Table with columns: IN WHOSE NAME ASSESSED, SUBDIVISION, ACRES, TRUE AND FULL VALUATIONS (LAND, BUILDINGS, MACHINERY, TOTAL), ASSESSED VALUATIONS (RURAL, ALL OTHER, MACHINERY, TOTAL ASSESSED VALUE), and FINAL EQUALIZED VALUE.

Cass County, Minnesota, for Taxes for the Year 1960.

Table with columns: VALUATIONS BY SCHOOL DISTRICTS AS EQUALIZED BY DEPARTMENT OF TAXATION, TAX INCLUDING STATE HOMESTEAD, SPECIAL TAXES, TOTAL TAXES, PAID, WHEN PAID, Number of Receipt, March Settlement, June Settlement, November Settlement, Penalty, Collections to First Monday in January, Delinquent on First Monday in January, Total Delinquent Tax and Penalty, REMARKS.

Assessment Roll and Tax List of Real Property in the Town of Ponts Lake

* Indicate Type of Property: R-Residential, C-Commercial, I-Industrial, U-Utility, F-Farm, L-Lakeshore, T-Timber, M-Mineral

Cass County, Minnesota, for Taxes for the Year 1960.

Table with columns for IN WHOSE NAME ASSESSED, DESCRIPTION OF PROPERTY, TRUE AND FULL VALUATIONS, VALUATIONS BY SCHOOL DISTRICTS AS EQUALIZED BY DEPARTMENT OF TAXATION, TAXES, PAID, WHEN PAID, and REMARKS. Includes entries for James H. & Sophia B. Fullerton, Clayton E. & Ida O. Petersons, Daniel M. & Angeline M. Coalittle, Matt R. & Lucille Novatney, Van & Ethel Alexander, Williams E. & Elora B. Anderson, and Clayton E. & Ida O. Petersons.

Camp Blanche Klumpe Camp
Ponto Point
Naprease Plat of
Beach East Shore
Ada Pine North Shore
Hegress 1st. Add'n

Assessment Roll and Tax List of Real Property in the Town of Ponto Lake

Cass County, Minnesota, for Taxes for the Year 1960.

* Indicate Type of Property: R-Residential, C-Commercial, I-Industrial, U-Utility, F-Farm, L-Lakeshore, T-Timber, M-Mineral

Table with columns: IN WHOSE NAME ASSESSED, SUBDIVISION, DESCRIPTION OF PROPERTY, TIME AND FULL VALUATIONS (RURAL, ALL OTHER, MACHINERY, etc.), VALUATIONS BY SCHOOL DISTRICTS AS EQUALIZED BY DEPARTMENT OF TAXATION, TAXES, PAID, WHEN PAID, Number of Receipt, March Settlement 1961, June Settlement 1961, November Settlement 1961, Collections to First Monday in January 1962, Delinquent on First Monday in January 1962, Total Delinquent Tax and Penalty, REMARKS.

Assessment Roll and Tax List of Real Property in the Town of Pointe Lake

* Indicate Type of Property: R-Residential, C-Commercial, I-Industrial, U-Utility, F-Farm, L-Lakeshore, T-Timber, M-Mineral

Cass County, Minnesota, for Taxes for the Year 1960.

Map Blank, Kinne Camp, Pointe Point, Manganese Beach, Flat of East Shore, Ada Pine Beach

Table with columns: IN WHOSE NAME ASSESSED, SUBDIVISION, DESCRIPTION OF PROPERTY, TRUE AND FULL VALUATIONS (LAND, BUILDINGS, MACHINERY, TOTAL), ASSESSED VALUATIONS (RURAL, ALL OTHER, TOTAL ASSESSED VALUE), and FINAL EQUALIZED VALUE.

Table with columns: VALUATIONS BY SCHOOL DISTRICTS AS EQUALIZED BY DEPARTMENT OF TAXATION, TAXES (SOLID FOR TAXES, SPECIAL TAXES, TOTAL TAXES), PAID, WHEN PAID, Number of Receipt, March Settlement, June Settlement, November Settlement, Collections to First Monday in January 1962, Delinquent on First Monday in January 1962, Total Delinquent Tax and Penalty, REMARKS.

Side of road 2nd Add'n, Leasher's Lake Ada Park, Slaggy Wood Shore, Pointe North Shore, Manganese South

Assessment Roll and Tax List of Real Property in the Town of Ponto Lake

Cass County, Minnesota, for Taxes for the Year 1960.

* Indicate Type of Property: R-Residential, C-Commercial, I-Industrial, U-Utility, F-Farm, L-Lakeshore, T-Timber, M-Mineral

Table with columns: IN WHOSE NAME ASSESSED, SUBDIVISION, DESCRIPTION OF PROPERTY, TRUE AND FULL VALUATIONS, ASSESSED VALUATIONS, VALUATIONS BY SCHOOL DISTRICTS AS EQUALIZED BY DEPARTMENT OF TAXATION, TAXES, PAID, WHEN PAID, Number of Receipt, March Settlement, June Settlement, November Settlement, Collections to First Monday in January 1962, Delinquent on First Monday in January 1962, Total Delinquent Tax and Penalty, REMARKS.

Snodgrass 2nd Add'n, Ponto Point, Napane Beach, Flat of East Shore, Line to North Shore, Snodgrass 1st. Addn. to North Shore

Snodgrass 2nd Add'n, Ponto Point, Napane Beach, Flat of East Shore, Line to North Shore, Snodgrass 1st. Addn. to North Shore, Shady Wood Shores, Inlay's Haven, Booth's South Shore Acres

Assessment Roll and Tax List of Real Property in the Town of Pont Lake

* Indicate Type of Property: R-Residential, C-Commercial, I-Industrial, U-Utility, F-Farm, L-Lakeshore, T-Timber, M-Mineral

Snodgrass 2nd Add'n, Lashor's Lake Add Park, Shady Wood Shores, Snodgrass 1st. Addn. to North Shore

Table with columns: IN WHOSE NAME ASSESSED, DESCRIPTION OF PROPERTY, TRUE AND FULL VALUATIONS, ASSESSED VALUATIONS, and FINAL EQUALIZED VALUE. Includes handwritten entries for property owners like Otto B. Griffen and various lot numbers.

Cass County, Minnesota, for Taxes for the Year 1960.

Table with columns: VALUATIONS BY SCHOOL DISTRICTS AS EQUALIZED BY DEPARTMENT OF TAXATION, TAXES, PAID, WHEN PAID, and REMARKS. Includes handwritten entries for tax amounts and payment dates.

Shurise Point, Halley's Haven, Boehm's South Shore Acres

