

ASSESSMENT & TAX LIST - 1957

Ponto Lake

NAME OF OWNER

TABULAR SCHEDULE OF VALUATIONS,

LEVIED IN THE Town OF Ponto Lake

RATES AND TAXES

COUNTY OF CASS, STATE OF MINNESOTA

School District No.	VALUATION BY SCHOOL DISTRICTS				RATE OF STATE TAXES	RATE OF COUNTY TAXES								RATE OF TOWN TAXES								RATE OF SCHOOL TAXES										
	Agri-cultural Lands	Non-Agri-cultural Lands	Personal Property	Total Value of all Property except Money and Credits		Rev.	R. & B.	Welfare	Bonds and Int.	Welfare	R. & B.	Def. Tax	State Loan	Welfare	R. & B.	Def. Tax	State Loan	Welfare	R. & B.	Def. Tax	State Loan	Local	Special	State Loan	Deficiency	Tuition	Transportation	Welfare	R. & B.	Def. Tax	State Loan	
11.4	25,264	16,910	39,072	52,832	6.01	20.8	15.	4.15	4.33	2.81	5.00	11.23	5.7	6.	1.	5.	5.															
			10,658																													
Assessed Value Homestead	13,321	1,566		14,887																												
Non-Homestead	17,065	10,222	10,658	37,945																												
Total	30,386	11,788	10,658	52,832																												

LOCAL 1 MILL AND SPECIAL SCHOOL TAXES BY DISTRICTS										ALL OTHER TAXES		
Local 1 Mill	Special	State Loan	Def.	Welfare	R. & B.	Def. Tax	State Loan	Welfare	R. & B.	FUNDS	Rate	Amounts
29.17	724.28		1288.19	2975	6187.2	5455				State - Non-Homestead		251.08
23.66	1183.05		1044.55	2413	30185	4425				State - Homestead		317.26
5283.19	1233		2332.74	5388	11205.7	9880				County Revenue		1615.50
										County Road and Bridge		792.38
										County Welfare		2490.83
										Bonds and Interest		228.70
										Welfare Def		148.42
										R. & B. Def. Orig.		264.16
										Town Revenue		301.10
										Town Road and Bridge		316.86
										Town Drag		52.83
										Town State Loan		264.15
										Welfare Phone		264.15
												1199.09
										School Local 1 Mill		52.83
										School Special		1912.33
										School State Loan		
										Deficiency		2332.74
										Tuition		53.88
										Transportation		1120.57
										C.O.		9880
										P.E.R.A.		5571.15

Total Number of Acres 12,215.99
 State of Minnesota, ss. L. C. Peterson
 COUNTY OF CASS
 Auditor of said County and State aforesaid, do hereby certify that the foregoing is a true and correct Schedule, showing the valuation of all the taxable property, in the Town of Ponto Lake, in said County, the several rates of Taxation and Totals of the several Tax Funds levied thereon for the year A. D. 1957.
 Witness my hand and official seal, this 20 day of December, A. D. 1957.

By L. C. Peterson County Auditor.
By Helen Billings Deputy

SEAL

Total Taxes Real Estate 10,524.54
 Pers. Prop. 2,746.56
 Total 13,271.10

Real Estate

Camp Blanchette, Kline Camp, Ponto Point, Napanee Beach, Lat of East Shore, Pine Beach

COLLECTIONS OF TAXES OF 195

Sum OF *Ponto Lake*

CASS COUNTY, MINNESOTA

1
2
3
4
5
6
7
8

NAME OF OWNER

FUNDS	MARCH SETTLEMENT 1958	JUNE SETTLEMENT 1958	NOV. SETTLEMENT 1958	Amount Collected from Nov. 1958 to First Monday in Jan. 1959	REDUCTIONS	Total Reductions and Collected	BALANCE UNCOLLECTED	ADDITIONS	Total Uncollected to First Monday in January, 1959
State—Non-Homestead,	6606	17043	2113	12					
State—Homestead,	6479	19676	3913	156					
County Revenue,	32969	100116	19908	792					
County Road and Bridge,	16172	49109	9765	388					
County Welfare,	58833	154365	30695	1220					
County Bond and Interest,	4668	14176	2819	112					
Well. Ref.	3029	9200	1827	72					
P. & B. Fed. Proj.	5391	16371	3253	129					
P&RA	3159	9592	1907	76					
Town Revenue,	2145	18661	3711	148					
Town Road and Bridge,	6468	19643	3906	155					
Town Drag,	1078	3274	651	27					
Town State Loan,									
Geo. Mural	2156	6547	1302	52					
P. & B. Bldg.	2156	6547	1303	52					
Cass Co. Agric.	539	1637	327	13					
Fire	5391	16370	3253	129					
Phone	5391	16370	3255	129					
School Local 1 Mill,	1079	3274	651	27					
School Special,	44664	116377	21554	647					
School State Loan,									
Deficiency	47609	144574	28750	1143					
Tuition									
Transportation	1100	3341	664	26					
L.O.	22867	69440	13808	549					
P&RA	2015	6122	1216	48					
	277966	821825	160556	6102					

	SCHOOL DISTRICT NO.	LOCAL 1 MILL	SPECIAL	STATE LOAN	Def.	Transp.	L.O.	P&RA	TOTALS
MARCH SETTLEMENT	114-a	370	9239		16320	377	7839	691	34836
	114-7a	709	35427		31289	723	15028	1324	87000
	Totals	1079	44666		47609	1100	22867	2015	119836
JUNE SETTLEMENT	114-a	1893	47318		83582	1932	40145	3539	178409
	114-7a	1381	69059		60992	1409	29295	2583	164719
	Totals	3274	116377		144574	3341	69440	6122	343128
NOVEMBER SETTLEMENT	114 a	440	10997		19426	449	9330	822	41464
	114 7a	211	10557		9324	215	4478	394	25179
	Totals	651	21554		28750	664	13808	1216	66643
NOVEMBER to JANUARY	114 a	27	647		1143	26	549	48	2440
	Totals	27	647		1143	26	549	48	2440
	School District No.								
ADDITIONS	Totals								
	School District No.								
	Totals								
REDUCTIONS	School District No.								
	Totals								

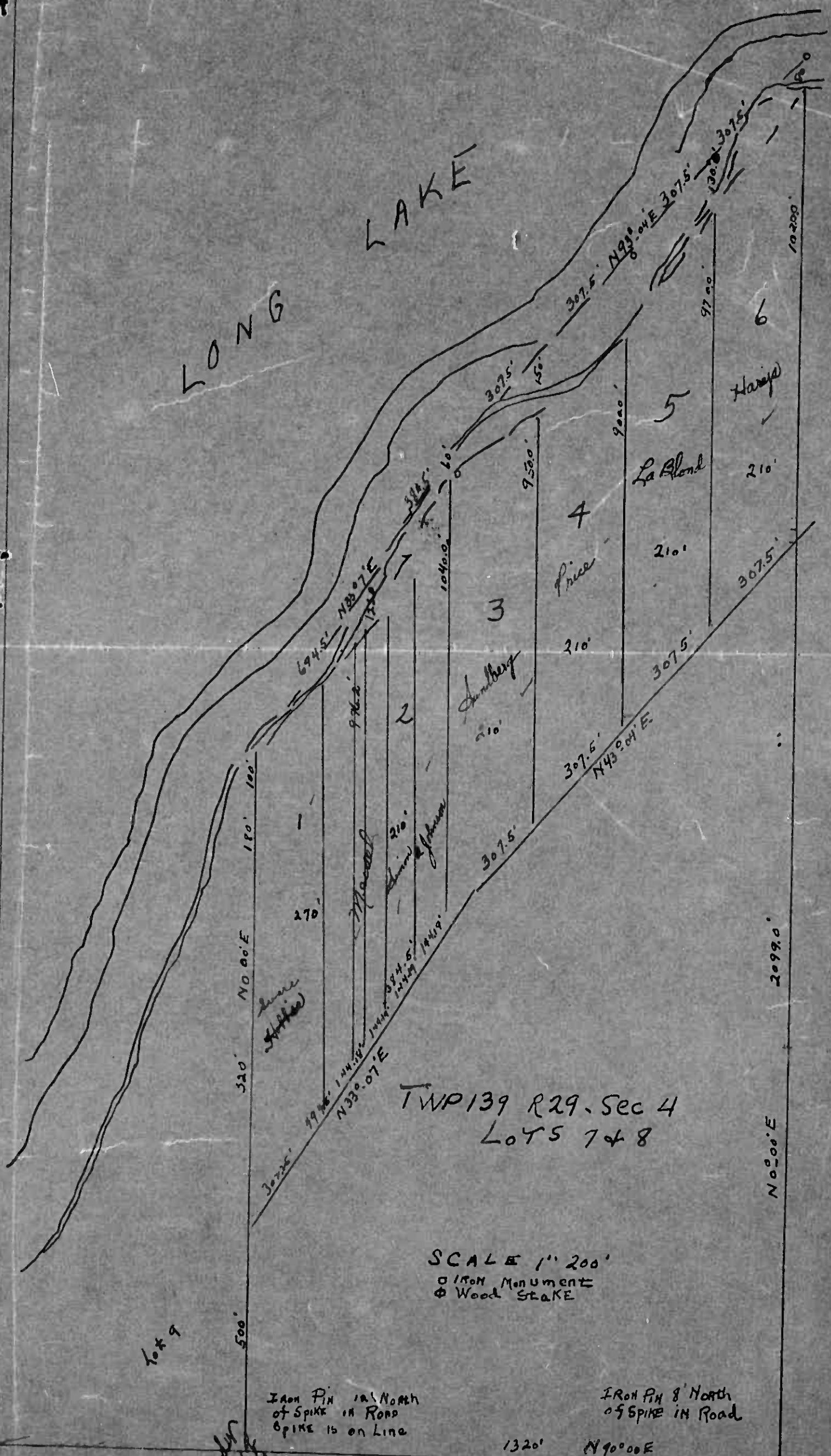
Real Estate

Camp Blanche
Kline Camp
Ponto Point
Napanee Beach
lat of East Shore line Beach

1959

Point Lake

LONG LAKE



TWP 139 R 29. Sec 4
Lots 5 7 & 8

SCALE 1" = 200'
○ IRON Monument
⊕ Wood Stake

IRON PIN 12' North
of SPIKE IN ROAD
SPIKE IS ON LINE

IRON PIN 8' North
of SPIKE IN ROAD

1320' N90°00'E

N0°00'E

10200'

SE COR LOT 8

Lot 9

Handwritten notes at bottom left corner.

Assessment Roll and Tax List of Real Property in the Town of Ponton, Cass County, Minnesota

Cass County, Minnesota, for Taxes for the Year 1957.

Real Estate

Camp Klumpe Camp Ponton Napanee Beach Lat of East Shore Line Beach

Form SCDT(56) Indicate Type of Property: R-Residential, C-Commercial, I-Industrial, U-Utility, F-Farm, L-Lakeshore, T-Timber, M-Mineral

Main table with columns: IN WHOSE NAME ASSESSED, TO WHOM TRANSFERRED, DESCRIPTION OF PROPERTY, TRUE AND FULL VALUATIONS, ASSESSED VALUATIONS, VALUATIONS BY SCHOOL DISTRICTS AS EQUALIZED BY DEPARTMENT OF TAXATION, TAXES, PAID, WHEN PAID, Number of Receipt, March Settlement 1958, June Settlement 1958, November Settlement 1958, Collections to First Monday in January 1959, Delinquent on First Monday in January 1959, Total Delinquent Tax and Penalty, REMARKS.

Orla V. & Irma Carper
That part of Govt lot 7 & 8 described as; Beg at the S.E. Cor of lot 8, thence N. along E. line of Lots 7 & 8 a distance of 2099' thence S. 43° 04' W. 1230' thence S. 33° 07' W. 879' to a point on the W. line of Lot; 500' N. of S. W. Cor. of lot 8 thence S. 500' to SW. cor. of lot 8, thence E. to Beg.

Adolph J. Johnson

Winfield C. & Francis D. Gray

William A. & Feda M. Simon

Eustace & Wallburga Meisel

Camp Klumpe Camp Ponton Napanee Beach Lat of East Shore Line Beach

Assessment Roll and Tax List of Real Property in the Town of Pointe Lake, Cass County, Minnesota

Cass County, Minnesota, for Taxes for the Year 1957.

Table with columns: IN WHOSE NAME ASSESSED, TO WHOM TRANSFERRED, DESCRIPTION OF PROPERTY, TRUE AND FULL VALUATIONS, ASSESSED VALUATIONS, VALUATIONS BY SCHOOL DISTRICTS AS EQUALIZED BY DEPARTMENT OF TAXATION, TAXES, PAID, WHEN PAID, Number of Receipt, March Settlement 1958, June Settlement 1958, November Settlement 1958, Penalty, Collections to First Monday in January 1959, Delinquent on First Monday in January 1959, Total Delinquent Tax and Penalty, REMARKS.

Real

Cam

Pointe Lake, Pointe Point, Napanee Beach, East Side of the Beach

Assessment Roll and Tax List of Real Property in the Town of Ponton Lakes

Indicate Type of Property: R-Residential, C-Commercial, I-Industrial, U-Utility, F-Farm, L-Lakeshore, T-Timber, M-Mineral

Cass County, Minnesota, for Taxes for the Year 1957.

IN WHOSE NAME ASSESSED	TO WHOM TRANSFERRED	DESCRIPTION OF PROPERTY				TRUE AND FULL VALUATIONS										FINAL EQUALIZED VALUE											
		SUBDIVISION	Sec. or Lot	Town or Block	Rng.	Number of Acres of Land	No. School District	Indicate Homestead Yes or No	Indicate Agricultural Yes or No	Indicate Type of Property	LAND EXCLUSIVE OF STRUCTURES AND IMPROVEMENTS			BUILDINGS AND OTHER STRUCTURES			MACHINERY PERMANENTLY ATTACHED TO REAL ESTATE	TOTAL TRUE AND FULL VALUE	RURAL		ALL OTHER			MACHINERY PERMANENTLY ATTACHED TO REAL ESTATE	TOTAL ASSESSED VALUE	Total Assessed Value as Equalized by the Board of Review	
											Dollars	Dollars	Dollars	Dollars	Dollars		Dollars	Dollars	Dollars	Dollars	Dollars	Dollars	Dollars	Dollars	Dollars	Dollars	Dollars
Henry F & Laura M. Howe		NE 1/4 of NE 1/4	7	13929	5260	30	no	no	h																		
Albertus & Cecelia B. Grimm		SW 1/4 of NE 1/4					no	no	C																		
Henry F & Laura Mae Howe		SE 1/4 of NE 1/4					no	no	h																		
Clarence J. Weber & Alfred A. Zuercher		Part of Lot 7					no	no	h																		
State of Minnesota		NE 1/4 of NW 1/4																									
State of Minnesota		NW 1/4 of NW 1/4																									
State of Minnesota		SW 1/4 of NW 1/4																									
State of Minnesota		SE 1/4 of NW 1/4																									
State of Minnesota		NE 1/4 of SW 1/4																									
State of Minnesota		NW 1/4 of SW 1/4																									
State of Minnesota		SW 1/4 of SW 1/4																									
Frank Johnson		SE 1/4 of SW 1/4					no	no	T																		
E. K. Anderson		NE 1/4 of SE 1/4					no	no	h																		
Lloyd M. & Dagmar Bradford		NW 1/4 of SE 1/4					no	no	h																		
		SW 1/4 of SE 1/4																									
LeRoy C. Baldwin		SE 1/4 of SE 1/4					no	no	T																		
Carl Westerman		Part of Lot 9					no	no	h																		

SOLD FOR TAXES	VALUATIONS BY SCHOOL DISTRICTS AS EQUALIZED BY DEPARTMENT OF TAXATION						Tax Including State Homestead	State Tax on Non-Homestead	SPECIAL TAXES	TOTAL TAXES	PAID	WHEN PAID	Number of Receipt	March Settlement 1958	June Settlement 1958	Penalty	November Settlement 1958	Penalty	Collections to First Monday in January 1959	Penalty	Delinquent on First Monday in January 1959	Total Delinquent Tax and Penalty	REMARKS		
	District No.	District No.	District No.	District No.	District No.	District No.																			
	Rate	Rate	Rate	Rate	Rate	Rate																			
	1	2	3	4	5	6																			
	120						2824	80	2904																
	100						4140	50	4190																
	14						330	10	340																
	73						1718	48	1766																
	60						1412	40	1452																
	167						3930	110	4040																
	110						2588	72	2660																
	32						752		752																
	61						1436		1436																
	193						19130	410	19540																

Cass County Minnesota, for Taxes for the Year 1957. Ponton Lakes

Assessment Roll and Tax List of Real Property in the Town of Pointe Lake

Cass County, Minnesota, for Taxes for the Year 1957.

Table with columns: IN WHOSE NAME ASSESSED, TO WHOM TRANSFERRED, DESCRIPTION OF PROPERTY, TRUER AND FULL VALUATIONS, ABSESSED VALUATIONS, VALUATIONS BY SCHOOL DISTRICTS AS EQUALIZED BY DEPARTMENT OF TAXATION, SOLD FOR TAXES, PAID, WHEN PAID, SPECIAL TAXES, TOTAL TAXES, MARCH SETTLEMENT 1958, JUNE SETTLEMENT 1958, PENALTY SETTLEMENT 1958, PENALTY, COLLECTIONS TO FIRST MONDAY IN JANUARY 1959, DELINQUENT ON FIRST MONDAY IN JANUARY 1959, TOTAL DELINQUENT TAX AND PENALTY, REMARKS.

Assessment Roll and Tax List of Real Property in the Town of Pontonak

Indicate Type of Property: R-Residential, C-Commercial, I-Industrial, U-Utility, F-Farm, L-Lakeshore, T-Timber, M-Mineral

Cass County, Minnesota, for Taxes for the Year 1957.

Table with columns: IN WHOSE NAME ASSESSED, TO WHOM TRANSFERRED, DESCRIPTION OF PROPERTY, TRUE AND FULL VALUATIONS, ASSESSED VALUATIONS, VALUATIONS BY SCHOOL DISTRICTS AS EQUALIZED BY DEPARTMENT OF TAXATION, TAXES, PAID, WHEN PAID, Number of Receipts, March Settlement 1958, June Settlement 1958, November Settlement 1958, Collections to First Monday in January 1959, Delinquent on First Monday in January 1959, Total Delinquent Tax and Penalty, REMARKS.

(Continued on next page)

Kimbe Camp Pontonak Napanee Beach lot of East Shore of the Beach

Assessment Roll and Tax List of Real Property in the Town of Ponton Lake

Cass County, Minnesota, for Taxes for the Year 1957.

Form FCD (56) Indicate Type of Property: R-Residential, C-Commercial, I-Industrial, U-Utility, F-Farm, L-Lakeshore, T-Timber, M-Mineral

Table with columns: IN WHOSE NAME ASSESSED, TO WHOM TRANSFERRED, SUBDIVISION, TRUE AND FULL VALUATIONS, ASSESSED VALUATIONS, FINAL EQUALIZED VALUE. Includes handwritten entries for various property owners like Edmund E. & Elizabeth C. Martineau.

Table with columns: SOLD FOR TAXES, VALIDATIONS BY SCHOOL DISTRICTS AS EQUALIZED BY DEPARTMENT OF TAXATION, SPECIAL TAXES, TOTAL TAXES, PAID, WHEN PAID, Number of Receipt, March Settlement 1958, June Settlement 1958, November Settlement 1958, Collections to First Monday in January 1959, Delinquent on First Monday in January 1959, Total Delinquent Tax and Penalty, REMARKS. Includes handwritten notes and calculations.

Vertical text on the right edge: Camp, Kinne Camp, Ponton Lake, Japanese Beach, East Shore, Pine Beach

Assessment Roll and Tax List of Real Property in the Town of Ponto Lake

Indicate Type of Property: R-Residential, G-Commercial, I-Industrial, U-Utility, F-Farm, L-Lakeshore, T-Timber, M-Mineral

Table with columns: IN WHOSE NAME ASSESSED, TO WHOM TRANSFERRED, DESCRIPTION OF PROPERTY, TRUE AND FULL VALUATIONS, ASSESSED VALUATIONS, FINAL EQUALIZED VALUE.

34 5V

Cass County, Minnesota, for Taxes for the Year 1957.

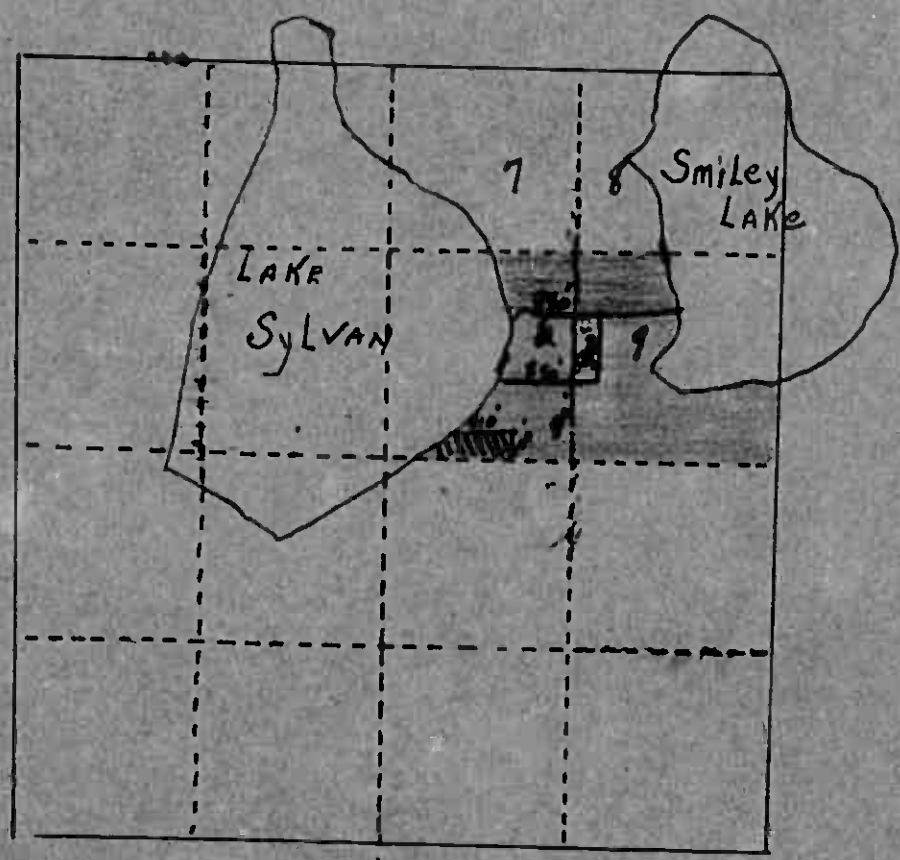
Table with columns: SOLD FOR TAXES, VALUATIONS BY SCHOOL DISTRICTS AS EQUALIZED BY DEPARTMENT OF TAXATION, TAX INCLUDING STATE HOMESTEAD, SPECIAL TAXES, TOTAL TAXES, PAID, WHEN PAID, Number of Receipt, March Settlement 1958, June Settlement 1958, November Settlement 1958, Collections to First Monday in January 1959, Delinquent on First Monday in January 1959, Total Delinquent Tax and Penalty, REMARKS.

Summary totals for the tax list, including totals for districts and overall county totals.

Camp Point Napanee Beach lat of East Shore the Beach

P. 76
Loot Lots 6+9

Sec. 20 - 139 - 29



▨ S 100' x W 410' on SW
corner of Lot 6
Best of Mine Persons

X (870' x 500' of Lot 6+9)
10 acs of S. 1000' of Lots 6+9
Nick J. Laub

X S 1000' of Lot 6+9 less
10 acs & less 100' of 20410'
The Freckleton

X Lot 6+9 less S. 1000' (or
N 320' of Lot 6+9) L. G. Minette

Assessment Roll and Tax List of Real Property in the Town of Ponto Lake

Indicate Type of Property: R-Residential, C-Commercial, I-Industrial, U-Utility, F-Farm, L-Lakeshore, T-Timber, M-Mineral

Form 300 (56) PULLER-BYRNE COMPANY, MINNEAPOLIS

Table with columns: IN WHOSE NAME ASSESSED, TO WHOM TRANSFERRED, DESCRIPTION OF PROPERTY, TRUE AND FULL VALUATIONS, ASSESSED VALUATIONS, and FINAL EQUALIZED VALUE. Includes handwritten entries for various property owners like 'State of Minnesota' and 'Glenn J. & June E. Hines'.

92530

Cass County, Minnesota, for Taxes for the Year 1957.

Table with columns: SOLD FOR TAXES, VALUATIONS BY SCHOOL DISTRICTS AS EQUALIZED BY DEPARTMENT OF TAXATION, Tax including State Homestead, State Tax on Non-Homestead, SPECIAL TAXES, TOTAL TAXES, PAID, WHEN PAID, Number of Receipt, March Settlement 1958, June Settlement 1958, November Settlement 1958, Penalty, Collections to First Monday in January 1959, Delinquent on First Monday in January 1959, Total Delinquent Tax and Penalty, REMARKS. Includes handwritten tax amounts and payment dates.

Handwritten summary of tax amounts: 86, 132, 218, 5128, 88, 5216, 4390, 727

Vertical text on the right edge of the page: Ponto Point Japanese Beach, East Shore Line Beach

Assessment Roll and Tax List of Real Property in the Town of Pontonak

Cass County, Minnesota, for Taxes for the Year 1957.

Table with columns: IN WHOSE NAME ASSESSED, TO WHOM TRANSFERRED, DESCRIPTION OF PROPERTY, TRUE AND FULL VALUATIONS, ABSESSED VALUATIONS, VALUATIONS BY SCHOOL DISTRICTS AS EQUALIZED BY DEPARTMENT OF TAXATION, TAXES, PAID, WHEN PAID, etc.

(Continued on next page)

Camp Point Kinross Camp Pontonak Napanee Beach Lat of East Shore Line Beach

Assessment Roll and Tax List of Real Property in the Town of Porto Lake

Cass County, Minnesota, for Taxes for the Year 1957.

Indicate Type of Property: R-Residential, C-Commercial, I-Industrial, U-Utility, F-Farm, L-Lakeshore, T-Timber, M-Mineral

Form 300 (567)

Table with columns: IN WHOSE NAME ASSESSED, TO WHOM TRANSFERRED, DESCRIPTION OF PROPERTY, TRUE AND FULL VALUATIONS, ASSESSED VALUATIONS, VALUATIONS BY SCHOOL DISTRICTS AS EQUALIZED BY DEPARTMENT OF TAXATION, SPECIAL TAXES, TOTAL TAXES, PAID, WHEN PAID, Number of Receipt, March Settlement 1958, June Settlement 1958, Penalty, November Settlement 1958, Collections to First Monday in January 1959, Delinquent on First Monday in January 1959, Total Delinquent Tax and Penalty, REMARKS.

Table with columns: District No., District No., District No., District No., District No., District No., Tax Including State Homestead, State Tax on Non-Homestead, SPECIAL TAXES, TOTAL TAXES, PAID, WHEN PAID, Number of Receipt, March Settlement 1958, June Settlement 1958, Penalty, November Settlement 1958, Collections to First Monday in January 1959, Delinquent on First Monday in January 1959, Total Delinquent Tax and Penalty, REMARKS.

Cass County, Minnesota, for Taxes for the Year 1957. Vertical text on the right edge of the page.

Assessment Roll and Tax List of Real Property in the Town of Point Lake

Indicate Type of Property: R-Residential, C-Commercial, I-Industrial, U-Utility, F-Farm, L-Lakeshore, T-Timber, M-Mineral

Table with columns: IN WHOSE NAME ASSESSED, TO WHOM TRANSFERRED, DESCRIPTION OF PROPERTY, TRUE AND FULL VALUATIONS, ASSESSED VALUATIONS, and FINAL EQUALIZED VALUE.

Cass County, Minnesota, for Taxes for the Year 1957.

Table with columns: SOLD FOR TAXES, VALUATIONS BY SCHOOL DISTRICTS AS EQUALIZED BY DEPARTMENT OF TAXATION, SPECIAL TAXES, TOTAL TAXES, PAID, WHEN PAID, Number of Receipt, and various settlement and penalty dates.

Camp Leche Kinne Camp Pointo Point Napanee Beach lat of East Shore in Beach

Assessment Roll and Tax List of Real Property in the Town of Ponto Lake, Cass County, Minnesota, for Taxes for the Year 1957.

Table with columns for Description of Property, True and Full Valuations, Assessed Valuations, Valuations by School Districts, and Tax Totals. Includes handwritten notes and corrections.

Camp Blanche

Ponto North Shore
Kinnel Camp Ponto Point
Napajee Beach
1st of East Shore

Assessment Roll and Tax List of Real Property in the Town of Pontotoc of Pontotoc

Cass County, Minnesota, for Taxes for the Year 1957.

Form 30 (56) JULY-1957 EMPLOY. UNEMPLOY. * Indicate Type of Property: R-Residential, C-Commercial, I-Industrial, U-Utility, F-Farm, L-Lakeshore, T-Timber, M-Mineral

Table with columns: IN WHOSE NAME ASSESSED, TO WHOM TRANSFERRED, SUBDIVISION, TRUE AND FULL VALUATIONS, ASSESSED VALUATIONS, and FINAL EQUALIZED VALUE.

Table with columns: VALUATIONS BY SCHOOL DISTRICTS AS EQUALIZED BY DEPARTMENT OF TAXATION, TAXES, PAID, WHEN PAID, March Settlement 1958, June Settlement 1958, Penalty, Collections to First Monday in January 1959, Delinquent on First Monday in January 1959, Total Delinquent Tax and Penalty, and REMARKS.

Summary row with totals for taxes and delinquents: 36464 840 37304 7364 27430 2508

Camp Blanche

Kinne Camp

Ponto North Shore

Snodgrass 1st add.

Ponto Point

Napanea Beach at East Shore

Pine Beach

Assessment Roll and Tax List of Real Property in the town of Ponto Lake

Indicate Type of Property: R-Residential, C-Commercial, I-Industrial, U-Utility, F-Farm, L-Lakeshore, T-Timber, M-Mineral

Cass County, Minnesota, for Taxes for the Year 1957.

IN WHOSE NAME ASSESSED	TO WHOM TRANSFERRED	SUBDIVISION	DESCRIPTION OF PROPERTY			TRUE AND FULL VALUATIONS											SOLD FOR TAXES	VALUATIONS BY SCHOOL DISTRICTS AS EQUALIZED BY DEPARTMENT OF TAXATION						SPECIAL TAXES	TOTAL TAXES	PAID	WHEN PAID	Number of Receipt	March Settlement 1958	June Settlement 1958	November Settlement 1958	Penalty	Collections to First Monday in January 1959	Penalty	Delinquent on First Monday in January 1959	Total Delinquent Tax and Penalty	REMARKS			
			Sec. of Lot	Town or Block	Rng.	Number of Acres of Land	LAND Exclusive of Structures and Improvements	BUILDINGS and Other Structures	MACHINERY Permanently Attached to Real Estate	TOTAL True and Full Value	Homestead Up to \$4,000 20%	RURAL Over \$4,000 and Non-Homestead 33 1/3%	Timber Land Class 2c 20%	ALL OTHER Homestead Up to \$4,000 25%	Over \$4,000 and Non-Homestead 40%	MACHINERY Permanently Attached to Real Estate 33 1/3%		TOTAL ASSESSED VALUE	Total Assessed Value as Equalized by the Board of Review	FINAL EQUALIZED VALUE	District No.	District No.	District No.															Project Rate	District No.	District No.
			Dollars	Dollars	Dollars	Dollars	Dollars	Dollars	Dollars	Dollars	Dollars	Dollars	Dollars	Dollars	Dollars	Dollars		Dollars	Dollars	Dollars	Dollars	Dollars	Dollars															Dollars	Dollars	Dollars
Geo. J. Schottler		Ponto Point	1	1		30	70	70										1	10				260	06		266	1	PAID IN FULL	MAY 3 1 1958								3885			
"		"	2			"	"	"										2	10				260	06		266	2	PAID IN FULL	MAY 3 1 1958								"			
"		"	3			"	"	"										3	10				260	06		266	3	PAID IN FULL	MAY 3 Q 1958								3883			
"		"	4			"	"	"										4	10				260	06		266	4	PAID IN FULL	MAY 3 1 1958								3883			
"		"	5			"	"	"										5	10				260	06		266	5	PAID IN FULL	MAY 3 1 1958	14005		2128					3883			
"		"	6			"	"	"										6	10				260	06		266	6	PAID IN FULL	MAY 3 1 1958								"			
"		"	7			"	"	"										7	10				260	06		266	7	PAID IN FULL	MAY 3 1 1958								"			
"		"	8			"	"	"										8	10				260	06		266	8	PAID IN FULL	MAY 3 1 1958								"			
Katie Miller		"	1	2		"	"	"										9	72				1874	48		1922	9	PAID IN FULL	FEB 1 1 1958	200	2188						7149			
Charles W. Miller		"	2			"	"	"										10	10				260	06		266	10	PAID IN FULL	FEB 1 1 1958								7149			
Map E. Schottler		"	3			"	"	"										11	10				260	06		266	11	PAID IN FULL	MAY 3 1 1958								3383			
"		"	4			"	"	"										12	10				260	06		266	12	PAID IN FULL	MAY 3 1 1958	14006		798				"				
"		"	5			"	"	"										13	10				260	06		266	13	PAID IN FULL	MAY 3 1 1958								"			
Geo. J. Schottler		"	6			"	"	"										14	10				260	06		266	14	PAID IN FULL	MAY 3 1 1958								"			
"		"	7			"	"	"										15	10				260	06		266	15	PAID IN FULL	MAY 3 1 1958	14004		266				3885				
Kenneth L. Schottler		"	8			"	"	"										16	10				260	06		266	16	PAID IN FULL	MAY 3 1 1958								"			
"		"	9			"	"	"										17	10				260	06		266	17	PAID IN FULL	MAY 3 1 1958	14003		266				3885				
Edward & Margaret Fullgraf		"	10			"	"	"										18	50				1302	34		1336	18	PAID IN FULL	MAY 6 1958	7382		1336				3887				
R. J. Henderson		"	11			"	"	"										19	54				1406	36		1442	19	PAID IN FULL	MAY 2 1958	7860		1442				3880				
"		"	12			"	"	"										20	10				260	06		266	20	PAID IN FULL	MAY 2 1958							"				
																		346					9802	220		9222					2188	7034								

Camp Blanche
Camp Kinne
Ponto Point

Snodgrass 1st add
Napinee Beach 1st of East Shore
The Beach

Assessment Roll and Tax List of Real Property in the Town of Ponto Lake

Cass County, Minnesota, for Taxes for the Year 1957.

Form 50 (1956) Indicate Type of Property: R-Residential, C-Commercial, I-Industrial, U-Utility, F-Farm, L-Lakeshore, T-Timber, M-Mineral

Table with columns: IN WHOSE NAME ASSESSED, TO WHOM TRANSFERRED, DESCRIPTION OF PROPERTY, TRUE AND FULL VALUATIONS, ASSESSED VALUATIONS, VALUATIONS BY SCHOOL DISTRICTS AS EQUALIZED BY DEPARTMENT OF TAXATION, SOLD FOR TAXES, SPECIAL TAXES, TOTAL TAXES, PAID, WHEN PAID, Number of Receipts, March Settlement 1958, June Settlement 1958, November Settlement 1958, Penalty, Collections to First Monday in January 1959, Delinquent on First Monday in January 1959, Total Delinquent Tax and Penalty, REMARKS.

Real Estate Camp Blanche Kinne Camp Ponto Point Napanee Beach

Ponto Shares Snodgrass 1st Add Snodgrass 2nd Plat of East Shore to East Shore Napanee Beach

Assessment Roll and Tax List of Real Property in the Township of Ponto Lake

Cass County, Minnesota, for Taxes for the Year 1957.

Form 30 (56) MINN. STAT. ANN. 263.02

Indicate Type of Property: R-Residential, C-Commercial, I-Industrial, U-Utility, F-Farm, L-Lakeshore, T-Timber, M-Mineral

IN WHOSE NAME ASSESSED	TO WHOM TRANSFERRED	DESCRIPTION OF PROPERTY			No. School District	Indicate Homestead Tax or No.	Indicate Agricultural Tax or No.	Indicate Type of Property	TRUE AND FULL VALUATIONS												Total Assessed Value as Equalized by the Board of Review	FINAL EQUALIZED VALUE			
		SUBDIVISION	Sec. or Lot	Town or Block					Rng.	Number of Acres of Land	ASSESSED VALUATIONS														
											LAND Exclusive of Structures and Improvements	BUILDINGS and Other Structures	MACHINERY Permanently Attached to Real Estate	TOTAL True and Full Value	RURAL		ALL OTHER						MACHINERY Permanently Attached to Real Estate	TOTAL ASSESSED VALUE	
															Homestead Up to \$1,000	Over \$4,000 and Non-Homestead	Timber Land Class 3c	Homestead Up to \$1,000	Over \$4,000 and Non-Homestead	Over \$4,000 and Non-Homestead					Over \$4,000 and Non-Homestead
<i>Arthur... & Lucille... Anderson</i>		<i>Napanee Beach</i>																							

SOLD FOR TAXES	VALUATIONS BY SCHOOL DISTRICTS AS EQUALIZED BY DEPARTMENT OF TAXATION						Tax Including State Homestead	State Tax on Non-Homestead	SPECIAL TAXES	TOTAL TAXES	PAID	WHEN PAID	Number of Receipt	March Settlement 1958	June Settlement 1958	Penalty	November Settlement 1958	Penalty	Collections to First Monday In January 1959	Penalty	Delinquent on First Monday In January 1959	Total Delinquent Tax and Penalty	REMARKS	
	District No.	District No.	District No.	District No.	District No.	District No.																		
	Rate	Rate	Rate	Rate	Rate	Rate																		
	Mills	Mills	Mills	Mills	Mills	Mills																		
1																								
2																								
3																								
4																								
5																								
6																								
7																								
8																								
9																								
10																								
11																								
12																								
13																								
14																								
15																								
16																								
17																								
18																								
19																								
20																								

Ponto... Snodgrass 1st add... Snodgrass 2nd... to East Shore of East Shore of Napanee Beach

Assessment Roll and Tax List of Real Property in the Town of Ponto Lake

Indicate Type of Property: R-Residential, C-Commercial, I-Industrial, U-Utility, F-Farm, L-Lakeshore, T-Timber, M-Mineral

Cass County, Minnesota, for Taxes for the Year 1957.

Table with columns: IN WHOSE NAME ASSESSED, TO WHOM TRANSFERRED, SUBDIVISION, DESCRIPTION OF PROPERTY, TRUE AND FULL VALUATIONS, ASSESSED VALUATIONS, VALUATIONS BY SCHOOL DISTRICTS AS EQUALIZED BY DEPARTMENT OF TAXATION, TAXES, PAID, WHEN PAID, Number of Receipt, March Settlement 1958, June Settlement 1958, Penalty, November Settlement 1958, Penalty, Collections to First Monday in January 1959, Penalty, Delinquent on First Monday in January 1959, Total Delinquent Tax and Penalty, REMARKS.

Plat of East Shore Spance Beach Ponto Point Kinne Camp Camp Blanche

Ponto Lake East Shore Snodgrass 1st Add East Shore Snodgrass 2nd Add to East Shore Lesher Ada Pine Beach

Assessment Roll and Tax List of Real Property in the Town of Pointe Lake of Pointe Lake * Indicate Type of Property: R-Residential, C-Commercial, I-Industrial, U-Utility, F-Farm, L-Lakeshore, T-Timber, M-Mineral

Table with columns: IN WHOSE NAME ASSESSED, TO WHOM TRANSFERRED, SUBDIVISION, TRUE AND FULL VALUATIONS, ASSESSED VALUATIONS, and FINAL EQUALIZED VALUE. Includes handwritten entries for Martin & Marion D. Roberts, John & Basile James, Fred H. & Marjorie F. Luthers, Fred W. Lang, Leonard Smith, and Ward W. & Ellen P. Long.

Plat of East Shore Spawnee Beach Pointe Point Kinne Camp

Cass County, Minnesota, for Taxes for the Year 1957.

Table with columns: SOLD FOR TAXES, VALUATIONS BY SCHOOL DISTRICTS AS EQUALIZED BY DEPARTMENT OF TAXATION, SPECIAL TAXES, TOTAL TAXES, PAID, WHEN PAID, Number of Receipt, March Settlement 1958, June Settlement 1958, November Settlement 1958, Collections to First Monday in January 1959, Delinquent on First Monday in January 1959, Total Delinquent Tax and Penalty, REMARKS. Includes handwritten entries for 'PAID IN FULL' and dates like 'MAY 31 1958'.

Pointe Lake Spawnee Beach Snodgrass 1st Add Snodgrass 2nd Add Lesnel Ada Pine Beach

Assessment Roll and Tax List of Real Property in the Town of Pontonak

Indicate Type of Property: R-Residential, C-Commercial, I-Industrial, U-Utility, F-Farm, L-Lakeshore, T-Timber, M-Mineral

Cass County, Minnesota, for Taxes for the Year 1957.

Plat of East Shore Spance Beach Pontonak Point Kinne Camp

Form 10 (56) JULY 24, 1954

IN WHOSE NAME ASSESSED	TO WHOM TRANSFERRED	DESCRIPTION OF PROPERTY				No. School District	Indicate Home-land Tax or No	Indicate Agricultural Tax or No	Indicate Type of Property	TRUE AND FULL VALUATIONS			ASSESSED VALUATIONS					Total Assessed Value as Equalized by the Board of Review	FINAL EQUALIZED VALUE			
		SUBDIVISION	Sec. of Lot	Town or Block	No. of Acres of Land					LAND Exclusive of Structures and Improvements	BUILDINGS and Other Structures	MACHINERY Permanently Attached to Real Estate	TOTAL True and Full Value	RURAL		ALL OTHER				TOTAL ASSESSED VALUE		
														Acres	Mills	Homestead Up to \$4,000 20%	Over \$4,000 and Non-Homestead 33 1/3%				Timber Land Class Jc 20%	Homestead Up to \$1,000 25%
Arthur M. & Thelma A. Boltiger	Charles C. & Jennie D. Conoghan	Plat of East Shore																				
Ward F. & Ellen F. Boyd																						
Ruth Lyon Sawell	E. S. & Evangeline S. Mynark																					
Fred H. & Marion E. Bartholomew																						

SOLD FOR TAXES	VALUATIONS BY SCHOOL DISTRICTS AS EQUALIZED BY DEPARTMENT OF TAXATION						Tax Including State Homestead	State Tax on Non-Homestead	SPECIAL TAXES	TOTAL TAXES	PAID	WHEN PAID	Number of Receipts	March Settlement 1958	June Settlement 1958	Penalty	November Settlement 1958	Penalty	Collections to First Monday in January 1959	Penalty	Delinquent on First Monday in January 1959	Total Delinquent Tax and Penalty	REMARKS
	District No.	District No.	District No.	District No.	District No.	District No.																	
	Rate	Rate	Rate	Rate	Rate	Rate																	

Pontonak Spance Beach Kinne Camp East Shore Spance Beach 1st Add to East Shore Spance Beach 2nd Add to East Shore Spance Beach

Assessment Roll and Tax List of Real Property in the Town of Ponto Lake

Indicate Type of Property: R-Residential, C-Commercial, I-Industrial, U-Utility, F-Farm, L-Lakeshore, T-Timber, M-Mineral

Cass County, Minnesota, for Taxes for the Year 1957.

Table with columns: IN WHOSE NAME ASSESSED, TO WHOM TRANSFERRED, SUBDIVISION, DESCRIPTION OF PROPERTY, TRUE AND FULL VALUATIONS, ASSESSED VALUATIONS, VALUATIONS BY SCHOOL DISTRICTS AS EQUALIZED BY DEPARTMENT OF TAXATION, SOLD FOR TAXES, SPECIAL TAXES, TOTAL TAXES, PAID, WHEN PAID, Number of Receipt, March Settlement 1958, June Settlement 1958, November Settlement 1958, Penalty, Collections to First Monday in January 1959, Delinquent on First Monday in January 1959, Total Delinquent Tax and Penalty, REMARKS.

Ada Pine Beach, Kinne Camp, Point Ponto Beach, East Shore, Snodgrass 1st Add, Snodgrass 2nd Add, Leshner's Lake

Ponto Lake, East Shore, Snodgrass 1st Add, Snodgrass 2nd Add, Leshner's Lake

Assessment Roll and Tax List of Real Property in the Town of Ponton Lake, Cass County, Minnesota, for Taxes for the Year 1957.

Cass County, Minnesota, for Taxes for the Year 1957.

Table with multiple columns: IN WHOSE NAME ASSESSED, TO WHOM TRANSFERRED, SUBDIVISION, TRUE AND FULL VALUATIONS, ASSESSED VALUATIONS, VALUATIONS BY SCHOOL DISTRICTS AS EQUALIZED BY DEPARTMENT OF TAXATION, TAX INCLUDING STATE HOMESTEAD, STATE TAX ON NON-HOMESTEAD, SPECIAL TAXES, TOTAL TAXES, PAID, WHEN PAID, Number of Receipt, March Settlement 1958, June Settlement 1958, November Settlement 1958, Penalty, Collections to First Monday in January 1959, Delinquent on First Monday in January 1959, Total Delinquent Tax and Penalty, REMARKS.

Range 5, Section 19, Township 10N, Range 5E, Cass County, Minnesota

Ponton Lake, Minnesota

Assessment Roll and Tax List of Real Property in the Town of Ponto Lake

Cass County, Minnesota, for Taxes for the Year 1957.

Form 30 (56) (MAY 1956) (REVISED 5-5-56)

* Indicate Type of Property: R-Residential, C-Commercial, I-Industrial, U-Utility, F-Farm, L-Lakeshore, T-Timber, M-Mineral

Table with multiple columns: IN WHOSE NAME ASSESSED, TO WHOM TRANSFERRED, SUBDIVISION, TRUE AND FULL VALUATIONS (LAND, BUILDINGS, MACHINERY, TOTAL), ASSESSED VALUATIONS (RURAL, ALL OTHER, MACHINERY), VALUATIONS BY SCHOOL DISTRICTS AS EQUALIZED BY DEPARTMENT OF TAXATION, TAXES, PAID, WHEN PAID, Number of Receipt, March Settlement 1958, June Settlement 1958, November Settlement 1958, Penalty, Collections to First Monday in January 1959, Delinquent on First Monday in January 1959, Total Delinquent Tax and Penalty, REMARKS.

Robert D. & Jean J. Honig
Ethel Mae Barber
Frank & Emma M. Sealey
Lester O. & Grace Stiles
Thomas R. & Ida Hauck Huston

Ponto North Shore
Date 7-25-59 3-139-29

Elkford 94

Waipart 2

460
1336
1546
36332 884
37216

3378 33906

Ponto North Shore
Kinne Camp
Ponto Point
Ponape Beach
Ada Pine Beach

Shady Wood
Snodgrass 1st Add. East Shore
Snodgrass 2nd Add. East Shore
Lesher's Lake Park

Assessment Roll and Tax List of Real Property in the Town of Ponto Lake

Cass County, Minnesota, for Taxes for the Year 1957.

Indicate Type of Property: R-Residential, C-Commercial, I-Industrial, U-Utility, F-Farm, L-Lakeshore, T-Timber, M-Mineral

Table with columns: IN WHOSE NAME ASSESSED, TO WHOM TRANSFERRED, DESCRIPTION OF PROPERTY, TRUE AND FULL VALUATIONS, ABSESSED VALUATIONS, and FINAL EQUALIZED VALUE. Includes handwritten entries for property owners like 'Olivia & Vivian Kober' and 'Glenn & Rosetta E. Snodgrass'.

Table with columns: VALUATIONS BY SCHOOL DISTRICTS AS EQUALIZED BY DEPARTMENT OF TAXATION, PAID, WHEN PAID, and various tax payment details. Includes handwritten entries for 'PAID IN FULL' and specific dates like 'MAY 31 1958'.

Summary totals at the bottom of the page: 498, 12440, 316, 12756, 8200, 4536

Vertical text on the left edge of the page: Ada Pine B..., East Shore B..., Snodgrass 1st Add. to East Shore...

Vertical text on the right edge of the page: Shad..., Snodgrass 2nd Add. to East Shore..., Leshler's Lake Park...

Assessment Roll and Tax List of Real Property in the Town of Parade Lake

Indicate Type of Property: R-Residential, C-Commercial, I-Industrial, U-Utility, F-Farm, L-Lakeshore, T-Timber, M-Mineral

Cass County, Minnesota, for Taxes for the Year 1957.

Table with columns: IN WHOSE NAME ASSESSED, TO WHOM TRANSFERRED, DESCRIPTION OF PROPERTY, TRUE AND FULL VALUATIONS, ASSESSED VALUATIONS, VALUATIONS BY SCHOOL DISTRICTS AS EQUALIZED BY DEPARTMENT OF TAXATION, SOLD FOR TAXES, SPECIAL TAXES, TOTAL TAXES, PAID, WHEN PAID, Number of Receipt, March Settlement 1958, June Settlement 1958, Penalty, November Settlement 1958, Penalty, Collections to First Monday in January 1959, Penalty, Delinquent on First Monday in January 1959, Total Delinquent Tax and Penalty, REMARKS.

Assessment Roll and Tax List of Real Property in the Town of Pontolake, Cass County, Minnesota, for Taxes for the Year 1957.

Table with columns: IN WHOSE NAME ASSESSED, TO WHOM TRANSFERRED, DESCRIPTION OF PROPERTY, TRUE AND FULL VALUATIONS, ASSESSED VALUATIONS, VALUATIONS BY SCHOOL DISTRICTS AS EQUALIZED BY DEPARTMENT OF TAXATION, TAXES, PAID, WHEN PAID, etc.

Ponto North Shore, Ponto Point, Snodgrass 1st Add., Snodgrass 2nd Add., Snodgrass 3rd Add., Snodgrass 4th Add., Snodgrass 5th Add., Snodgrass 6th Add., Snodgrass 7th Add., Snodgrass 8th Add., Snodgrass 9th Add., Snodgrass 10th Add., Snodgrass 11th Add., Snodgrass 12th Add., Snodgrass 13th Add., Snodgrass 14th Add., Snodgrass 15th Add., Snodgrass 16th Add., Snodgrass 17th Add., Snodgrass 18th Add., Snodgrass 19th Add., Snodgrass 20th Add.

Shady Wood Shores, Lay Haven, Personal

Assessment Roll and Tax List of Real Property in the Town of Porte Lake, Minnesota

Indicate Type of Property: R-Residential, C-Commercial, I-Industrial, U-Utility, F-Farm, L-Lakeshore, T-Timber, M-Mineral

Ad Fisher's Lake Ada's Snodgrass 2nd Add. Snodgrass 1st Add. to East Shore Shady Wood Shores

Table with columns: IN WHOSE NAME ASSESSED, TO WHOM TRANSFERRED, DESCRIPTION OF PROPERTY (Subdivision, Sec. of Lot, Town or Block, No.), TRUTH AND FULL VALUATIONS (Land, Buildings, Machinery, Total), ASSESSED VALUATIONS (Rural, All Other, Machinery, Total Assessed), FINAL EQUALIZED VALUE.

Table with columns: SOLD FOR TAXES, VALUATIONS BY SCHOOL DISTRICTS AS EQUALIZED BY DEPARTMENT OF TAXATION, TAX INCLUDING STATE HOMESTEAD (Mills, Cts), SPECIAL TAXES, TOTAL TAXES, PAID, WHEN PAID (Month, Day, Year), Number of Receipt, March Settlement 1958, June Settlement 1958, November Settlement 1958, Penalties, Collections to First Monday in January 1959, Delinquent on First Monday in January 1959, Total Delinquent Tax and Penalty, REMARKS.

Cass County, Minnesota, for Taxes for the Year 1957

Halcy Haven

Personnel

Assessment Roll and Tax List of Real Property in the Town of Pointe Lake

Cass County, Minnesota, for Taxes for the Year 1957.

Table with columns for IN WHOSE NAME ASSESSED, TO WHOM TRANSFERRED, DESCRIPTION OF PROPERTY, TRUE AND FULL VALUATIONS, ASSESSED VALUATIONS, VALUATIONS BY SCHOOL DISTRICTS AS EQUALIZED BY DEPARTMENT OF TAXATION, SOLD FOR TAXES, PAID, WHEN PAID, Number of Receipts, March Settlement 1958, June Settlement 1958, November Settlement 1958, Delinquent on First Monday in January 1959, Total Delinquent Tax and Penalty, REMARKS.

Vertical text on the left margin: Ad Wusher's Lake Ad... Snodgrass 2nd Add... Snodgrass 1st Add... Shady Wood Shores... Haley Haven... Pointe Lake...

Vertical text on the right margin: Personal

