

Assessment & Tax list - 1961

Pike Bay

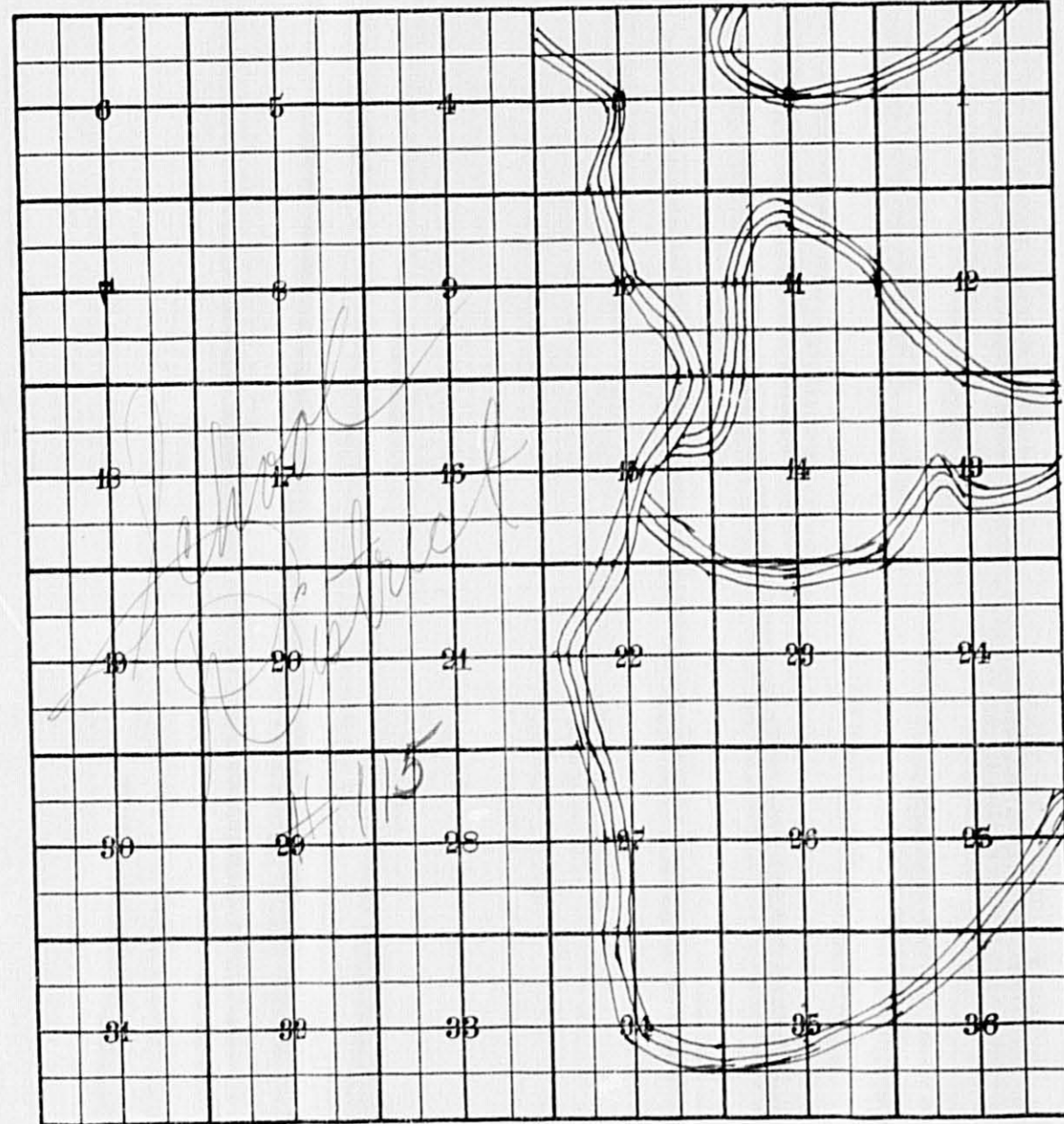
INDEX TO SECTIONS

SECTION PAGE

Sec. 1	
" 2	
" 3	
" 4	
" 5	
" 6	
" 7	
" 8	
" 9	
" 10	
" 11	
" 12	
" 13	
" 14	
" 15	
" 16	
" 17	
" 18	
" 19	
" 20	
" 21	
" 22	
" 23	
" 24	
" 25	
" 26	
" 27	
" 28	
" 29	
" 30	
" 31	
" 32	
" 33	
" 34	
" 35	
" 36	

For Convenience of Auditor in Showing Boundaries of School Districts

Township No. 145 Range No. 31 Mer. P. M.



Returns Showing Grain Received in or Handled by Elevators, Warehouses and Mills in the \_\_\_\_\_ of \_\_\_\_\_ in the \_\_\_\_\_ County of \_\_\_\_\_ for the Year Ending May 1, 1961.

NAMES OF OWNERS	ADDRESS	Bushels of Wheat	Bushels of Soy Beans	Bushels of Flax	Total No. of Bushels of Wheat, Soy Beans and Flax	★ Tax of 1/2 Mill per Bushel		Bushels of Corn	Bushels of Barley	Bushels of Rye	Bushels of Oats	Bushels of Buckwheat	Bushels of all Other Grains	Total No. Bushels Corn, Barley, Rye, Oats, Buckwheat and all Other Grains	★ Tax of 1/4 Mill Per Bushel		★ Total Tax		REMARKS		
						Dollars	Cts.								Dollars	Cts.	Dollars	Cts.			

Note ★ Assessors will not fill these Columns



NAME OF OWNER

## TABULAR SCHEDULE OF VALUATIONS,

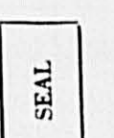
LEVIED IN THE Town OF Pike Bay

## RATES AND TAXES

COUNTY OF CASS, STATE OF MINNESOTA

School District No.	VALUATION BY SCHOOL DISTRICTS				RATE OF STATE TAXES	RATE OF COUNTY TAXES							RATE OF TOWN TAXES										RATE OF SCHOOL TAXES			TAXES LEVIED												
	Agri-cultural Lands	Non-Agri-cultural Lands	Personal Property	Total Value of all Property except Money and Credits	Total Rate of State Tax	Rev.	R. & B.	Wel-fare	Bonds and Int.	wellfare	Total Rate of County Tax	Rev.	R. & B.	State Loan	Local	Spe-cial	State Loan	Defi-cien-cy	Tui-tion	Trans-portion	Local	Spe-cial	State Loan	Defi-cien-cy	Tui-tion	Trans-portion	Local 1 Mill	Special	State Loan	Total School Taxes	FUNDS	Rate	Amounts					
115	37,148	19,937	9 4519 NA 92783	154,387	6.39	36.86	20.	57.3		10.89	5.67	134.97	1.95	4.54	1.95																							
				Assessed Value																																		
				Rural	All Other		Personal Property		Total																													
				20,197	8845		29042																															
				Non-Homestead																																		
				26,685	1358		97302		125,345																													
				Total	46,882		10,203		97,302		154,387																											
					C2		5823																															
					Other		91479		97,302																													

Total Levy, \$54,787.<sup>40</sup>  
 Total Number of Acres 9,467.97  
 State of Minnesota, }  
 COUNTY OF CASS }  
 Auditor of said County and State aforesaid, do hereby certify that the foregoing is a true and correct Schedule, showing the valuation of all the taxable property, in the Town of Pike Bay, in said County, the several rates of Taxation and Totals of the several Tax Funds levied thereon for the year A. D. 1961.  
 Witness my hand and official seal, this 3rd day of January, A. D. 1962.  
 L. E. Peterson }  
 County Auditor.  
 By Helen Bilken, Deputy



Total Taxes Real Estate 19,580.52  
 Pers. Prop. 35,206.88  
 Total 54,787.40

Auditor's Plat  
 Bag-8-20-Me-Ning Beach  
 Supplemental Plat  
 AH-NING PR  
 Read Plat

Assessment of Taxes

COLLECTIONS OF TAXES OF 1961 OF *Sum* *Pike Bay*, CASS COUNTY, MINNESOTA

Form 335 WILSON-DAY COMPANY, MINNEAPOLIS

NAME OF OWNER

1

2

3

4

5

6

7

8

FUNDS	MARCH SETTLEMENT 1962	JUNE SETTLEMENT 1962	NOV. SETTLEMENT 1962	Amount Collected from Nov. 1961 to First Monday in Jan. 1962	REDUCTIONS	Total Reductions and Collected	BALANCE UNCOLLECTED	ADDITIONS	Total Uncollected to First Monday in January, 1962
State-Non-Homestead,	759 18	183 44	117 11	2 58					
State-Homestead,	531 97	227 02	152 51	4 51					
County Revenue,	3 235 54	1 320 60	899 32	25 07					
County Road and Bridge,	1 755 58	716 55	487 96	13 60					
County Welfare,	5 029 74	2 052 91	1 398 02	38 98					
County <sup>House</sup> Bond and Interest,	95 68	39 05	26 59	7 4					
C.N. Bldg.	1 75 56	71 65	48 80	1 36					
Agri. Assn	43 89	17 91	12 20	3 4					
Civ. Def.	57 93	23 65	16 10	4 5					
Town Revenue,	1 71 17	69 86	47 58	1 33					
Town Road and Bridge,	3 48 53	1 62 66	1 10 76	3 09					
Town State Loan,									
<i>Fire</i>	1 71 17	69 86	47 58	1 33					
School Local 1 Mill,	4 314 59	1 237 24	904 58	19 24					
School Special,									
School State Loan,									
Deficiency	8 163 46	3 331 95	2 269 03	63 26					
Tuition									
Transportation									
C. O.	3 511 16	1 433 10	975 93	27 21					
B. + D.	1 316 69	537 41	365 97	10 21					
PERA	614 45	250 80	170 79	4 76					
<i>Welf. Def.</i>	955 91	390 16	265 70	7 40					
<i>PERA</i>	497 72	203 14	138 34	3 86					
	3 179 92	1 258 96	845 87	229 32					

	SCHOOL DISTRICT NO.	LOCAL 1 MILL	SPECIAL	STATE LOAN	Deficiency	C. O.	B. + D.	PERA	TOTALS
MARCH SETTLEMENT	115A		7436		27664	11898	4462	2082	53542
	1157A		424023		788682	339218	127207	59363	1738473
	Totals		431459		816346	351116	131669	61445	1792035
JUNE SETTLEMENT	115A		55413		206137	88661	33248	15516	398975
	1157A		68311		127058	54649	20493	9564	280075
	Totals		123724		333195	143310	53741	25080	679050
NOVEMBER SETTLEMENT	115A		31533		117301	50452	18919	8829	227034
	1157A		58925		109602	47141	17678	8250	241596
	Totals		90458		226903	97593	36597	17079	468630
NOVEMBER to JANUARY	115A		1478		5498	2365	887	414	10642
	1157A		446		828	356	134	62	1826
	Totals		1924		6326	2721	1021	476	12468
ADDITIONS	School District No.								
	Totals								
REDUCTIONS	School District No.								
	Totals								

Read Private

4H NING PT

Supplemental Plat  
Big-S-20-Me-Ming Beach

Auditors Plat



Assessment Roll and Tax List of Real Property in the Down of Pho Pub

Cass County, Minnesota, for Taxes for the Year 1961.

\* Indicate Type of Property: R-Residential, C-Commercial, I-Industrial, U-Utility, F-Farm, L-Lakeshore, T-Timber, M-Mineral

IN WHOSE NAME ASSESSED	DESCRIPTION OF PROPERTY				No. School District	Indicate Homestead Yes or No	Agricultural Yes or No	Indicate Type of Property	TRUE AND FULL VALUATIONS								Total Assessed Value as Equalized by the Board of Review	FINAL EQUALIZED VALUE	SOLD FOR TAXES	VALUATIONS BY SCHOOL DISTRICTS AS EQUALIZED BY DEPARTMENT OF TAXATION						Tax including State Homestead	State Tax on Non-Homestead	SPECIAL TAXES	SPECIAL TAXES	TOTAL TAXES	PAID	WHEN PAID	Number of Receipt	March Settlement 1962	June Settlement 1962	Penalty	November Settlement 1962	Penalty	Collections to First Monday in January 1963	Penalty	Delinquent on First Monday in January 1963	Total Delinquent Tax and Penalty	REMARKS												
	SUBDIVISION	Sec. or Lot	Town or Block	Rng.					Number of Acres of Land	LAND Exclusive of Structures and Improvements	BUILDINGS and Other Structures	MACHINERY Permanently Attached to Real Estate	TOTAL True and Full Value	RURAL		ALL OTHER				MACHINERY Seasonal and Recreational Cabins	TOTAL ASSESSED VALUE	District No.	District No.	District No.	District No.																			District No.	Rate	Rate	Rate	Rate	Rate						
														Homestead Up to \$4,000 20%	Over \$4,000 and Non-Homestead 33 1/2%	Timber Land Class 3e 20%																																		Homestead Up to \$4,000 25%	Over \$4,000 and Non-Homestead 40%	33 1/2%	33 1/2%	Mills	Mills
					Acres 100ths				Dollars	Dollars	Dollars	Dollars	Dollars	Dollars	Dollars	Dollars	Dollars	Dollars	Dollars	Dollars	Dollars	Dollars	Dollars	Dollars	Dollars	Dollars	Dollars	Dollars	Dollars	Dollars	Dollars	Dollars	Dollars	Dollars	Dollars	Dollars	Dollars	Dollars	Dollars	Dollars	Dollars	Dollars	Dollars	Dollars	Dollars	Dollars	Dollars	Dollars	Dollars	Dollars					
<i>A. Stanley Johnson</i>					<i>2525</i>	<i>115</i>														<i>998</i>	<i>35410</i>	<i>910</i>	<i>36320</i>	<i>PAID IN FULL MAY 31 1962</i>	<i>11534</i>			<i>36320</i>																<i>2530</i>											

Real Estate

AH N. V. G. Pr.

Supplemental Plat Bug-Go-Me-Ming Beach

Auditors Plat # 3

Assessment Roll and Tax List of Real Property in the Pawn of Pike Peak

\* Indicate Type of Property: R-Residential, C-Commercial, I-Industrial, U-Utility, F-Farm, L-Lakeshore, T-Timber, M-Mineral

Cass County, Minnesota, for Taxes for the Year 1961.

Table with columns for Property Description, Valuations (True and Full, Assessed), School District Valuations, Taxes (Special, Total), and Payment Status. Includes entries for Frank & Elizabeth Schneider, Thomas J. & Josephine Accardo, State of Minnesota, Melvin C. & Bessie M. Newstrand, Sarah & Bessie Myrtle Hilcox, Clarence & Dorothy Parmenter, and George A. & Paul A. Neal.

Real Estate

AN UNG PR

Supplemental Plat Bug-B-Go-Me-Ming Beach

Auditors Plat # 3



Assessment Roll and Tax List of Real Property in the Town of Pike Lake

Cass County, Minnesota, for Taxes for the Year 1961.

\* Indicate Type of Property: R-Residential, C-Commercial, I-Industrial, U-Utility, F-Farm, L-Lakeshore, T-Timber, M-Mineral

Table with columns for Property Description, Valuations (True and Full, Assessed, School Districts), Taxes (SOLD FOR TAXES, State Tax, Special Taxes, Total Taxes), and Payment/Remarks. Includes handwritten entries for property owners like Everett Q. Haugen & Alice M. Kristensen and Yvonne S. Sanders.

Real Estate

AH NUG PT.

Supplemental Plat Bug-20-Me-Ming Beach

Auditors Plat # 3



Assessment Roll and Tax List of Real Property in the Town of Pike Lake

Cass County, Minnesota, for Taxes for the Year 1961.

Form 5CD MILLER-DAVIS CO., MINNEAPOLIS

\* Indicate Type of Property: R-Residential, C-Commercial, I-Industrial, U-Utility, F-Farm, L-Lakeshore, T-Timber, M-Mineral

Table with columns: IN WHOSE NAME ASSESSED, DESCRIPTION OF PROPERTY, TRUE AND FULL VALUATIONS, ASSESSED VALUATIONS, VALUATIONS BY SCHOOL DISTRICTS AS EQUALIZED BY DEPARTMENT OF TAXATION, Tax Including State Homestead, State Tax on Non-Homestead, SPECIAL TAXES, TOTAL TAXES, PAID, WHEN PAID, Number of Receipt, March Settlement 1962, June Settlement 1962, Penalty, November Settlement 1962, Collections to First Monday in January 1963, Delinquent on First Monday in January 1963, Total Delinquent Tax and Penalty, REMARKS.

Real Estate

Real Estate

Supplemental Plat #3

Auditors Plat #3

Assessment Roll and Tax List of Real Property in the Town of Pipe Bay

Cass County, Minnesota, for Taxes for the Year 1961.

Form 500 - MILLER-DAVIS CO., MINNEAPOLIS

\* Indicate Type of Property: R-Residential, C-Commercial, I-Industrial, U-Utility, F-Farm, L-Lakeshore, T-Timber, M-Mineral

Table with columns: IN WHOSE NAME ASSESSED, DESCRIPTION OF PROPERTY, TRUE AND FULL VALUATIONS, ASSESSED VALUATIONS, VALUATIONS BY SCHOOL DISTRICTS AS EQUALIZED BY DEPARTMENT OF TAXATION, TAXES, PAID, WHEN PAID, Number of Receipt, March Settlement, June Settlement, November Settlement, Collections to First Monday in January, Delinquent on First Monday in January, Total Delinquent Tax and Penalty, REMARKS.

State of Minnesota  
R. J. Dangelhoff

Percy E. & Jane Grenwald

Clark E. & Rozella Miller

Elmer A. & Elizabeth M. Larson

Albert & E. Marie Kolkin

Charles E. & Rozella Miller

C. A. Drew & C. A. Drew

Charles M. & Grace H. Ringman

Stanley A. Johnson

James M. & M. L. Shoda

John May Jarvis

Allen W. & Ruby L. Carlson

Real Estate

Supplemental Plat Bug-B-G-Ming Beach

Auditors Plat # 3

Assessment Roll and Tax List of Real Property in the Town of Pike Bay, Cass County, Minnesota, for Taxes for the Year 1961.

Re-assessed 1967

Table with columns: IN WHOSE NAME ASSESSED, DESCRIPTION OF PROPERTY, TRUE AND FULL VALUATIONS, ASSESSED VALUATIONS, VALUATIONS BY SCHOOL DISTRICTS AS EQUALIZED BY DEPARTMENT OF TAXATION, Tax including State Homestead, State Tax on Non-Homestead, SPECIAL TAXES, TOTAL TAXES, PAID, WHEN PAID, Number of Receipt, March Settlement, June Settlement, November Settlement, Collections to First Monday in January, Delinquent on First Monday in January, Total Delinquent Tax and Penalty, REMARKS.

(CONT' NEXT PAGE-SEC. 8)

44 NING PT

Supplemental Plat Bug-E-Zo-Me-Ming Beach

Auditors Plat # 3

## Assessment Roll and Tax List of Real Property in the Town of Pike Bay,

\* Indicate Type of Property: R-Residential, C-Commercial, I-Industrial, U-Utility, F-Farm, L-Lakeshore, T-Timber, M-Mineral

## Cass County, Minnesota, for Taxes for the Year 1961.

Form 500 - MILLER-DAVIS CO., MINNEAPOLIS

IN WHOSE NAME ASSESSED	DESCRIPTION OF PROPERTY				No. School District	Indicate Homeestead Yes or No	Agriculture or Sea Rec Yes or No	Indicate Type of Property	TRUE AND FULL VALUATIONS			ASSESSED VALUATIONS						SOLD FOR TAXES	VALUATIONS BY SCHOOL DISTRICTS AS EQUALIZED BY DEPARTMENT OF TAXATION				Tax Including State Homestead	State Tax on Non-Homestead	SPECIAL TAXES	SPECIAL TAXES	TOTAL TAXES	PAID	WHEN PAID	Number of Receipt	March Settlement 1962	June Settlement 1962	Penalty	November Settlement 1962	Penalty	Collections to First Monday in January 1963	Penalty	Delinquent on First Monday in January 1963	Total Delinquent Tax and Penalty	REMARKS								
	Subdivision	Sec or Lot	Town or Block	Rng. Acres					LAND Exclusive of Structures and Improvements	BUILDINGS and Other Structures	MACHINERY Permanently Attached to Real Estate	TOTAL True and Full Value	RURAL Homestead Up to \$4,000 20%	Over \$4,000 and Non-Homestead 33 1/3%	TIMBER Land Class 3e 20%	Homestead Up to \$4,000 25%	Over \$4,000 and Non-Homestead 40%		MACHINERY Permanently Attached to Real Estate 33 1/3%	Seasonal and Recreational Cabins 33 1/3%	TOTAL ASSESSED VALUE	Total Assessed Value as Equalized by the Board of Review																			FINAL EQUALIZED VALUE	District No.	Rate	District No.	Rate	District No.	Rate	District No.
				8 145 31	115																																											
<i>Gladys Ayse</i>																																																
<i>Gladys Ayse</i>																																																
<i>Cyrus A. &amp; Thina Bramen</i>																																																
<i>Otter Tail Power Company</i>																																																
<i>Cyrus A. &amp; Thina Bramen</i>																																																

Real Estate  
 AH-NING PR  
 Supplemental Plat  
 Bug-R-20-Me-Ming Beach  
 Auditors Plat # 3

Assessment Roll and Tax List of Real Property in the Town of Lake Park of Cass County, Minnesota

\* Indicate Type of Property: R-Residential, C-Commercial, I-Industrial, U-Utility, F-Farm, L-Lakeshore, T-Timber, M-Mineral

Form SCD MILLER-DAVIS CO., MINNEAPOLIS

IN WHOSE NAME ASSESSED	DESCRIPTION OF PROPERTY	No. School District	Indicate Homestead Yes or No	Acre or Less Rec'd Yes or No	Indicate Type of Property	TRUE AND FULL VALUATIONS				ASSESSED VALUATIONS							FINAL EQUALIZED VALUE	REMARKS		
						LAND Exclusive of Structures and Improvements	BUILDINGS and Other Structures	MACHINERY Permanently Attached to Real Estate	TOTAL True and Full Value	RURAL			ALL OTHER						TOTAL ASSESSED VALUE	Total Assessed Value as Equalized by the Board of Review
										Homestead Up to \$4,000 20%	Over \$4,000 and Non-Homestead 33 1/3%	Timber Land Class 3e 20%	Homestead Up to \$4,000 25%	Over \$4,000 and Non-Homestead 40%	MACHINERY Permanently Attached to Real Estate 33 1/3%	Seasonal and Recreational Cabins 33 1/3%				
H. H. Richmond	NE 1/4 of NE 1/4 LESS SOLD	1			T										37					
Frank Leike	NW 1/4 of NE 1/4	2			F															
Wheeler Lumber Bridge & Supply Company	SW 1/4 of NE 1/4	3			T															
H. H. Richmond	SE 1/4 of NE 1/4 & NE 1/4	4																		
"	N 1/2 of SE 1/4 LESS SOLD	5																		
The Northwest Paper Company	NE 1/4 of NW 1/4	6			T															
"	NW 1/4 of NW 1/4	7																		
L.C. & Sarah Kirkpatrick	SW 1/4 of NW 1/4	8																		
Wheeler Lumber Bridge & Supply Company	SE 1/4 of NW 1/4	9																		
Clifford R. & Grace C. Swenson	NE 1/4 of NE 1/4 of SE 1/4 & SE 1/4 of SE 1/4 of NE 1/4	10			R															
H. H. Richmond	NE 1/4 of SW 1/4	11			T															
loyd L. & Dagmar Baird	NW 1/4 of SW 1/4	12																		
Wm. Stai	SW 1/4 of SW 1/4 of RT LESS HWY	13			R															
"	IN AND PHAT #3	14																		
Hollace D. & Anne L. Hiebert	SE 1/4 of NE 1/4 of SE 1/4 LESS S. 51'	15			R															
Richard & Gloria Lauseke	W. 900' of SW 1/4 of SW 1/4 LYING S. OF RK	16																		
"	NW 1/4 of SE 1/4	17																		
"	SW 1/4 of SE 1/4	18																		
"	SE 1/4 of SE 1/4	19																		
Village of Cass Lake	SE 1/4 of NW 1/4 of SE 1/4	20																		

(Cont'd NEXT page) 442.50

Cass County, Minnesota, for Taxes for the Year 1961.

SOLD FOR TAXES	VALUATIONS BY SCHOOL DISTRICTS AS EQUALIZED BY DEPARTMENT OF TAXATION						Tax Including State Homestead	State Tax on Non-Homestead	SPECIAL TAXES	SPECIAL TAXES	TOTAL TAXES	PAID	WHEN PAID	Number of Receipt	March Settlement 1962	June Settlement 1962	Penalty	November Settlement 1962	Penalty	Collections to First Monday in January 1963	Penalty	Delinquent on First Monday in January 1963	Total Delinquent Tax and Penalty	REMARKS	
	District No.	District No.	District No.	District No.	District No.	District No.																			
	Rate	Rate	Rate	Rate	Rate	Rate																			
1				37			1220	34			1254	1	PAID IN FULL MAY 3 1 1962		1254									2531	
2				88			2902	80			2982	2	1st HALF PAID MAY 3 1 1962		1491		14 91						15518	9507	
3				48			1584	44			1628	3	PAID IN FULL MAY 3 1 1962		1628									14951	
4				40			1320	36			1356	4	PAID IN FULL MAY 3 1 1962		1356									2531	
5				82			2704	74			2778	5	PAID IN FULL MAY 2 8 1962		2778									"	
6				80			2638	72			2710	6	PAID IN FULL MAY 3 1 1962		2710									14786	
7				80			2638	72			2710	7	PAID IN FULL MAY 3 1 1962		2710									"	
8				80			2638	72			2710	8	1st HALF PAID MAY 2 1 1962		1355		13 55						15517	9506	
9				78			2572	72			2644	9	PAID IN FULL MAY 3 1 1962		2644									14951	
10				4800			26384	4692			26384	10	PAID IN FULL MAY 1 4 1962		26384									9509	
11				80			2638	74			2712	11	PAID IN FULL MAY 2 8 1962		2712									2531	
12				88			2902	80			2982	12	1st HALF PAID MAY 3 1 1962		1491		14 91						15521	9505	
13				165			5442	150			5592	13	2nd HALF PAID OCT 3 1 1962		2796		27 96						15523	9511	
14												14													
15	SOLD FOR TAXES			189			6234				6234	15	PAID IN FULL MAY 3 1 1962		6234										2535
16	SOLD FOR TAXES			54			1780				1780	16													2535
17												17													
18												18													
19												19													
20												20													

21043 746 1989 65596 860 66456 57543 7133 1780

4H WING PT

Supplemental Plat Bug-B-20-Wing Beach

Auditors Plat # 3

Assessment Roll and Tax List of Real Property in the Town of Pike Bay, Cass County, Minnesota, for Taxes for the Year 1961.

Cass County, Minnesota, for Taxes for the Year 1961.

Form SCD MILLER-DAVIS CO., MINNEAPOLIS

\* Indicate Type of Property: R-Residential, C-Commercial, I-Industrial, U-Utility, F-Farm, L-Lakeshore, T-Timber, M-Mineral

Table with columns: IN WHOSE NAME ASSESSED, DESCRIPTION OF PROPERTY, TRUE AND FULL VALUATIONS, ASSESSED VALUATIONS, and FINAL EQUALIZED VALUE. Includes entries for Philip M. & Helen A. Larson, Clyde & Shirley Connor, Dean A. Christensen, Paul D. & Ruth R. Smith, Kenneth Burns, and Arnold C. & Dorothy M. Larson.

Table with columns: VALUATIONS BY SCHOOL DISTRICTS AS EQUALIZED BY DEPARTMENT OF TAXATION, TAX INCLUDING STATE HOMESTEAD, SPECIAL TAXES, TOTAL TAXES, PAID, WHEN PAID, Number of Receipt, March Settlement, June Settlement, November Settlement, Collections to First Monday in January 1963, Delinquent on First Monday in January 1963, Total Delinquent Tax and Penalty, REMARKS.

4750

Handwritten summary calculations for the bottom row of the table, showing totals for assessed values and taxes.

Ah Nung PT.

Supplemental Plat Bug-R-20-Me-Wing Beach

Auditors Plat # 3



Assessment Roll and Tax List of Real Property in the Town of Pike Bay

\* Indicate Type of Property: R-Residential, C-Commercial, I-Industrial, U-Utility, F-Farm, L-Lakeshore, T-Timber, M-Mineral

Form SCD MILLER-DAVIS CO., MINNEAPOLIS

Cass County, Minnesota, for Taxes for the Year 1961.

Table with columns: IN WHOSE NAME ASSESSED, DESCRIPTION OF PROPERTY, TRUE AND FULL VALUATIONS, ASSESSED VALUATIONS, VALUATIONS BY SCHOOL DISTRICTS AS EQUALIZED BY DEPARTMENT OF TAXATION, TAXES, PAID, WHEN PAID, Number of Receipt, March Settlement, June Settlement, November Settlement, Collections to First Monday in January, Delinquent on First Monday in January, Total Delinquent Tax and Penalty, REMARKS.

Caroline Vivian Barr (Indian)

John Joseph Kind (Indian)

Northwest Paper Company

Carl & Gertrude M. Bixenstine

Isla J. Falk Jacobs

Ralph F. & Marion S. Lorenflo

Independent School District No. 115

Real Estate

Supplemental Plat Bug-E-Go-the-Ming Beach

Auditors Plat # 3





Assessment Roll and Tax List of Real Property in the Town of Pike Lake

Cass County, Minnesota, for Taxes for the Year 1961.

Form SCD MILLER-DAVIS CO., MINNEAPOLIS

\* Indicate Type of Property: R-Residential, C-Commercial, I-Industrial, U-Utility, F-Farm, L-Lakeshore, T-Timber, M-Mineral

Table with columns: IN WHOSE NAME ASSESSED, DESCRIPTION OF PROPERTY, TRUE AND FULL VALUATIONS, ASSESSED VALUATIONS, VALUATIONS BY SCHOOL DISTRICTS AS EQUALIZED BY DEPARTMENT OF TAXATION, TAXES, PAID, WHEN PAID, Number of Receipt, March Settlement, June Settlement, November Settlement, Collections to First Monday in January, Delinquent on First Monday in January, Total Delinquent Tax and Penalty, REMARKS.

U. S. of America
U. S. of America
U. S. of America
U. S. of America
U. S. of America

Real Estate

Supplemental Plat Bug-2-20-Ming Beach

Auditors Plat # 3



Assessment Roll and Tax List of Real Property in the Town of Pike Lake

\* Indicate Type of Property: R-Residential, C-Commercial, I-Industrial, U-Utility, F-Farm, L-Lakeshore, T-Timber, M-Mineral

Form 5CD MILLER-DAVIS CO., MINNEAPOLIS

IN WHOSE NAME ASSESSED	DESCRIPTION OF PROPERTY				No. School District	Indicate Homestead Yes or No	Agricultural or Seasonal Yes or No	Indicate Type of Property	TRUE AND FULL VALUATIONS				ASSESSED VALUATIONS						FINAL EQUALIZED VALUE			
	SUBDIVISION	Sec. or Lot	Town or Block	Rng.					Number of Acres of Land	LAND Exclusive of Structures and Improvements	BUILDINGS and Other Structures	MACHINERY Permanently Attached to Real Estate	TOTAL True and Full Value	RURAL		ALL OTHER		MACHINERY Permanently Attached to Real Estate		Seasonal and Recreational Cabins	TOTAL ASSESSED VALUE	Total Assessed Value as Equalized by the Board of Review
														Acres	100ths	Homestead Up to \$4,000 20%	Over \$4,000 and Non-Homestead 33 1/3%					
									Dollars	Dollars	Dollars	Dollars	Dollars	Dollars	Dollars	Dollars	Dollars	Dollars				
	NE 1/4 of NE 1/4				15 145 31																	
	NW 1/4 of NE 1/4																					
	SW 1/4 of NE 1/4																					
	SE 1/4 of NE 1/4																					
	NE 1/4 of NW 1/4																					
	NW 1/4 of NW 1/4																					
	SW 1/4 of NW 1/4																					
	SE 1/4 of NW 1/4																					
	NE 1/4 of SW 1/4																					
	NW 1/4 of SW 1/4																					
	SW 1/4 of SW 1/4																					
	SE 1/4 of SW 1/4																					
	NE 1/4 of SE 1/4																					
	NW 1/4 of SE 1/4																					
	SW 1/4 of SE 1/4																					
	SE 1/4 of SE 1/4																					

Village of Cass Lake

Exempt

Cass County, Minnesota, for Taxes for the Year 1961.

SOLD FOR TAXES	VALUATIONS BY SCHOOL DISTRICTS AS EQUALIZED BY DEPARTMENT OF TAXATION						Tax Including State Homestead	State Tax on Non-Homestead	SPECIAL TAXES	SPECIAL TAXES	TOTAL TAXES	PAID	WHEN PAID	Number of Receipt	March Settlement 1962	June Settlement 1962	Penalty	November Settlement 1962	Penalty	Collections to First Monday in January 1963	Penalty	Delinquent on First Monday in January 1963	Total Delinquent Tax and Penalty	REMARKS
	District No.	District No.	District No.	District No.	District No.	District No.																		
	Rate	Rate	Rate	Rate	Rate	Rate																		

ANALOG PT.

Supplemental Plat Bug-E-Go-He-Bing Beach

Auditors Plat # 3

Assessment Roll and Tax List of Real Property in the

Form 500 MILLER-DAVIS CO., MINNEAPOLIS

Indicate Type of Property: Commercial, S $\frac{1}{2}$  of SW $\frac{1}{4}$ , Utility, F-Farm, L-Lakeshore, T-Timber, M-Mineral

Sec. 16 T. 145 R. 31

DESCRIPTION OF PROPERTY

Table with columns: IN WHOSE NAME ASSESSED, SUBDIVISION, Sec. or Lot, Town or Block, Rng., Number of Acres of Land, Acres 100ths, No. School District, Ind. Home-Stepped, Agri. or Recr., etc.

U. S. of America
Dollard L. & Carroll Premo
Nellie E. Hough
P. H. Campbell
U. S. of America
Hoyd & Dagmar L. Laidt
Alice L. Lundrigan
Ernest A. Norenberg
Alice L. Lundrigan
Fred F. Rehill
Marta L. & Nora O. Raines
Leroy & Betty M. Ellis
Lorbel & Stella Nestland
Am. A. Clark
Marta L. & Nora O. Raines
Donald F. & Isabelle J. Bohn
Ronald E. & Alice M. Hanson
Carl W. & Beverly J. Kauppi

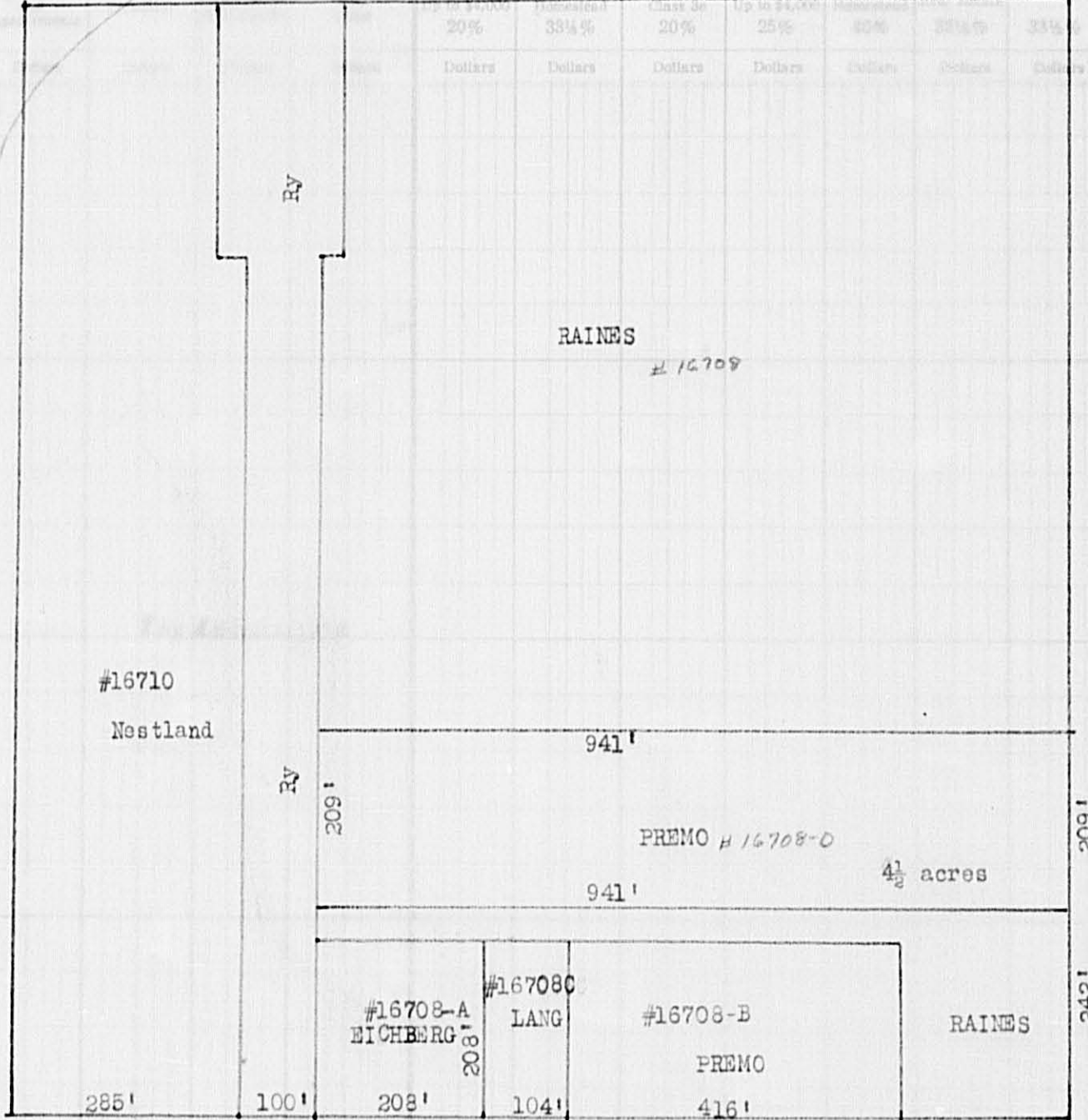


Table with columns: TOTAL ASSESSED VALUE, Total Assessed Value as Equalized by the Board of Review, FINAL EQUALIZED VALUE.

Main tax table with columns: SOLD FOR TAXES, VALUATIONS BY SCHOOL DISTRICTS AS EQUALIZED BY DEPARTMENT OF TAXATION, Tax Including State Homestead, State Tax on Non-Homestead, SPECIAL TAXES, TOTAL TAXES, PAID, WHEN PAID, Number of Receipt, March Settlement, June Settlement, Penalty, November Settlement, Penalty, Collections to First Monday in January 1963, Delinquent on First Monday in January 1963, Total Delinquent Tax and Penalty, REMARKS.

Supplemental Plat Bug-E-Lo-Ming Beach Auditors Plat # 3





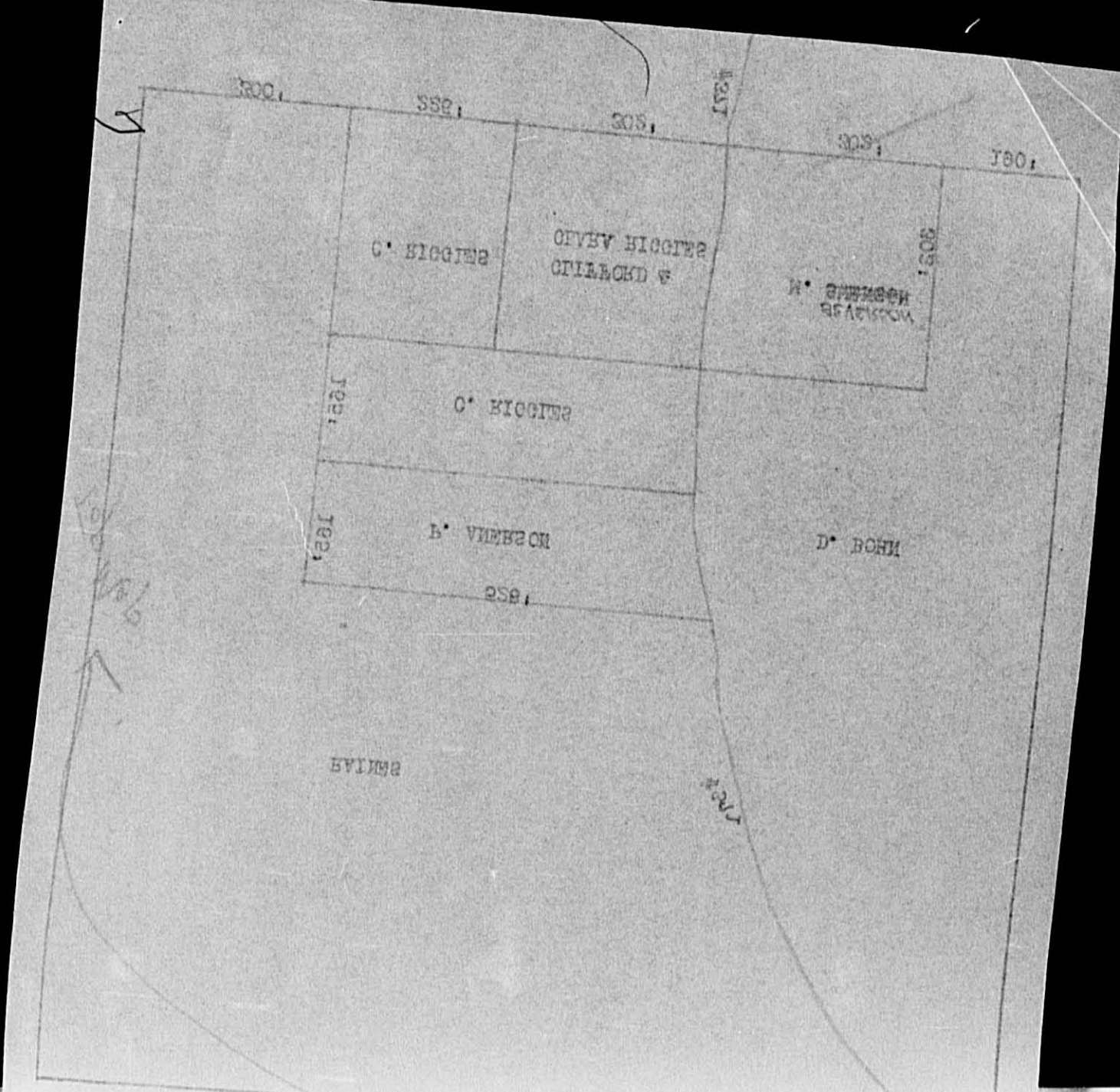


Assessment Roll and Tax List of Real Property in the

Town of Pipe Lake

Cass County, Minnesota, for Taxes for the Year 1961.

\* Indicate Type of Property: R-Residential, C-Commercial, I-Industrial, U-Utility, F-Farm, L-Lakeshore, T-Timber, M-Mineral



IN WHOSE NAME ASSESSED	DESCRIPTION OF PROPERTY				No. School District	Indicate House-stand Yes or No	Agricultural or Other Use Yes or No	Indicate Type of Property	TRUE AND FULL VALUATIONS												Total Assessed Value as Equalized by the Board of Review	FINAL EQUALIZED VALUE
	SUBDIVISION	Sec. or Lot	Town or Block	Rtg. Acres 100ths					LAND EXCLUSIVE OF BUILDINGS AND IMPROVEMENTS			BUILDINGS AND OTHER STRUCTURES			MACHINERY PERMANENTLY ATTACHED TO REAL ESTATE			TOTAL TRUE AND FULL VALUE				
									Over \$4,000 and Non-Homestead 20%	Over \$4,000 Homestead 25%	Timber Class 3e 20%	Dollars	Dollars	Dollars	Dollars	Dollars	Dollars	Dollars	Dollars			
State of Minnesota	1			115																		
Edna & Margaret Kallstrom	2			10			T															
"	3			30			R															
William & Virginia (Wife)	4						T															
Mrs. Mary Anderson	5			2			R															
Ruth King	6						"															
Ray G. & Martha Hugh Woods	7						C															
Alfred & Helen R. Bruno	8			45			R															
Pike Long Township	9						"															
Clifford & Clara Riggles	10			2			R															
Palmer J. & Bertha M. Anderson	11			2			R															
William Eickberg	14			1			"															
Donald John	15			680			T															
Huber Lumber Bridge & Supply Co.	16			30			T															
"	17			10			"															
Clifford & Clara Riggles	18			2			R															
Clifford P. & Clara R. Riggles	20						T															

(CONT'D NEXT PAGE)

SOLD FOR TAXES	VALUATIONS BY SCHOOL DISTRICTS AS EQUALIZED BY DEPARTMENT OF TAXATION						Tax Including State Homestead	State Tax on Non-Homestead	SPECIAL TAXES	SPECIAL TAXES	TOTAL TAXES	PAID	WHEN PAID	Number of Receipts	March Settlement 1962	June Settlement 1962	November Settlement 1962	Penalty	Collections to First Monday in January 1963	Penalty	Delinquent on First Monday in January 1963	Total Delinquent Tax and Penalty	REMARKS
	District No.	Rate	District No.	Rate	District No.	Rate																	
	Dollars	Mills	Dollars	Mills	Dollars	Mills																	
1																							
2																							
3																							
4																							
5																							
6																							
7																							
8																							
9																							
10																							
11																							
12																							
13																							
14																							
15																							
16																							
17																							
18																							
19																							
20																							

Supplemental Plat # 3 Auditors Plat # 3

Assessment Roll and Tax List of Real Property in the Town of Pike Bay

\* Indicate Type of Property: R-Residential, C-Commercial, I-Industrial, U-Utility, F-Farm, L-Lakeshore, T-Timber, M-Mineral

Form 5CD - MILLER-DAVIS CO., MINNEAPOLIS

Table with columns: IN WHOSE NAME ASSESSED, DESCRIPTION OF PROPERTY, ASSESSED VALUATIONS (RURAL, ALL OTHER, MACHINERY, etc.), and FINAL EQUALIZED VALUE.

Wayne E. Heemstra

Cass County, Minnesota, for Taxes for the Year 1961.

Table with columns: VALUATIONS BY SCHOOL DISTRICTS AS EQUALIZED BY DEPARTMENT OF TAXATION, TAXES (SPECIAL, TOTAL), PAID, WHEN PAID, and REMARKS.

Real Estate

Supplemental Plat Bug-B-20-10-Ming Beach

Auditors Plat # 3

Assessment Roll and Tax List of Real Property in the town of Pike Bay

Cass County, Minnesota, for Taxes for the Year 1961.

Form 5CD - MILLER-DAVIS CO., MINNEAPOLIS

\* Indicate Type of Property: R-Residential, C-Commercial, I-Industrial, U-Utility, F-Farm, L-Lakeshore, T-Timber, M-Mineral

Table with columns: IN WHOSE NAME ASSESSED, DESCRIPTION OF PROPERTY, TRUE AND FULL VALUATIONS, ASSESSED VALUATIONS, VALUATIONS BY SCHOOL DISTRICTS AS EQUALIZED BY DEPARTMENT OF TAXATION, TAXES, PAID, WHEN PAID, etc.

Harold G. & Donna M. Gehke
Ole Hendrickson
Floyd L. & Ragnar L. Baird
Hubert D. & Louise E. Ledeboer
Oscar & Ethelwyn Eidemo
Frank & Johanna Elliott
Hubert D. & Louise E. Ledeboer
The Northwest Paper Company
Bertha Bisson
Harry E. & Bertha L. Blaman
The Northwest Paper Company

(CONT NEXT PAGE)

4th NING PT

Supplemental Plat Bug-B-60-96-Ning Beach

Auditors Plat # 3



Assessment Roll and Tax List of Real Property in the Town of Pike Bend

Cass County, Minnesota, for Taxes for the Year 1961.

\* Indicate Type of Property: R-Residential, C-Commercial, I-Industrial, U-Utility, F-Farm, L-Lakeshore, T-Timber, M-Mineral

Table with columns: IN WHOSE NAME ASSESSED, DESCRIPTION OF PROPERTY, TRUE AND FULL VALUATIONS (RURAL, ALL OTHER, MACHINERY, etc.), VALUATIONS BY SCHOOL DISTRICTS AS EQUALIZED BY DEPARTMENT OF TAXATION, Tax including State Homestead, SPECIAL TAXES, TOTAL TAXES, PAID, WHEN PAID, Number of Receipt, March Settlement, June Settlement, Penalty, November Settlement, Penalty, Collections to First Monday in January 1963, Delinquent on First Monday in January 1963, Total Delinquent Tax and Penalty, REMARKS.

ANNUAL PT.

Supplemental Plat Bug-B-Zo-Me-Ming Beach

Auditors Plat # 3

Assessment Roll and Tax List of Real Property in the Town of Pike Bay

Cass County, Minnesota, for Taxes for the Year 1961.

\* Indicate Type of Property: R-Residential, C-Commercial, I-Industrial, U-Utility, F-Farm, L-Lakeshore, T-Timber, M-Mineral

Form 50-D MILLER-DAVIS CO., MINNEAPOLIS

Table with columns: IN WHOSE NAME ASSESSED, DESCRIPTION OF PROPERTY, TRUE AND FULL VALUATIONS, ASSESSED VALUATIONS, VALUATIONS BY SCHOOL DISTRICTS AS EQUALIZED BY DEPARTMENT OF TAXATION, TAX INCLUDING STATE HOMESTEAD, SPECIAL TAXES, TOTAL TAXES, PAID, WHEN PAID, Number of Receipt, March Settlement 1962, June Settlement 1962, Penalty, November Settlement 1962, Penalty, Collections to First Monday in January 1963, Delinquent on First Monday in January 1963, Total Delinquent Tax and Penalty, REMARKS.

AN UNG PT

Supplemental Plat Bug-R-Zo-We-Ning Beach

Auditors Plat # 3















Assessment Roll and Tax List of Real Property in the Town of Pike Bay, of Pike Bay, \* Indicate Type of Property: R-Residential, C-Commercial, I-Industrial, U-Utility, F-Farm, L-Lakeshore, T-Timber, M-Mineral

Table with columns: IN WHOSE NAME ASSESSED, DESCRIPTION OF PROPERTY, TRUE AND FULL VALUATIONS (LAND, BUILDINGS, MACHINERY, RURAL, ALL OTHER, MACHINERY, Seasonal and Recreational Cabins), ASSESSED VALUATIONS (TOTAL ASSESSED VALUE, Total Assessed Value as Equalized by the Board of Review), FINAL EQUALIZED VALUE. Includes entries for Leland E. Russell, Duane & Frances Wintermeyer, State of Minnesota, and Richard C. & Arvilla M. Nitner.

Cass County, Minnesota, for Taxes for the Year 1961.

Table with columns: SOLD FOR TAXES, VALUATIONS BY SCHOOL DISTRICTS AS EQUALIZED BY DEPARTMENT OF TAXATION (District No., Rate, Mills), Tax including State Homestead, State Tax on Non-Homestead, SPECIAL TAXES, TOTAL TAXES, PAID, WHEN PAID (Month, Day, Year), Number of Receipt, March Settlement 1962, June Settlement 1962, Penalty, November Settlement 1962, Penalty, Collections to First Monday in January 1963, Delinquent on First Monday in January 1963, Total Delinquent Tax and Penalty, REMARKS. Includes entries for parcels 1 through 20 with handwritten notes on payments and penalties.

AN UNG PR

Supplemental Plat # 3

Auditors Plat # 3

Assessment Roll and Tax List of Real Property in the Town of Pipe Bay of Pipe Bay \* Indicate Type of Property: R-Residential, C-Commercial, I-Industrial, U-Utility, F-Farm, L-Lakeshore, T-Timber, M-Mineral

Table with columns: IN WHOSE NAME ASSESSED, DESCRIPTION OF PROPERTY, TRUE AND FULL VALUATIONS (RURAL, ALL OTHER, MACHINERY, etc.), ASSESSED VALUATIONS, and FINAL EQUALIZED VALUE.

Cass County, Minnesota, for Taxes for the Year 1961.

Table with columns: VALUATIONS BY SCHOOL DISTRICTS AS EQUALIZED BY DEPARTMENT OF TAXATION, TAX INCLUDING STATE HOMESTEAD, SPECIAL TAXES, TOTAL TAXES, PAID, WHEN PAID, Number of Receipt, March Settlement, June Settlement, Penalty, November Settlement, Penalty, Collections to First Monday in January 1961, Delinquent on First Monday in January 1961, Total Delinquent Tax and Penalty, REMARKS.

428.79

4 885  
154  
1039

34264 140

34404

198 11 145 93

ANNUAL PT.

Supplemental Plat Bug-F-20-Me-Ving Beach

Auditors Plat # 3





Assessment Roll and Tax List of Real Property in the Town of Pike Bay

Cass County, Minnesota, for Taxes for the Year 1961.

\* Indicate Type of Property: R-Residential, C-Commercial, I-Industrial, U-Utility, F-Farm, L-Lakeshore, T-Timber, M-Mineral

Table with columns: IN WHOSE NAME ASSESSED, DESCRIPTION OF PROPERTY, TRUE AND FULL VALUATIONS, VALUATIONS BY SCHOOL DISTRICTS AS EQUALIZED BY DEPARTMENT OF TAXATION, TAX INCLUDING STATE HOMESTEAD, SPECIAL TAXES, TOTAL TAXES, PAID, WHEN PAID, Number of Receipt, March Settlement 1962, June Settlement 1962, Penalty, November Settlement 1962, Penalty, Collections to First Monday in January 1963, Delinquent on First Monday in January 1963, Total Delinquent Tax and Penalty, REMARKS.

(CONT'D. ON NEXT PAGE)

Assessment Roll

Supplemental Plat Beach

Auditors Plat # 3

















Assessment Roll and Tax List of Real Property in the

Town of Pike Park

\* Indicate Type of Property: R-Residential, C-Commercial, I-Industrial, U-Utility, F-Farm, L-Lakeshore, T-Timber, M-Mineral

Form 50 - MILLER-DAVIS CO., MINNEAPOLIS

Table with columns: IN WHOSE NAME ASSESSED, SUBDIVISION, Sec. of Lot, Town or Block, Ring, Number of Acres of Land, No. School District, Indicate Homestead, Indicate Agricultural, Indicate Property, TRUE AND FULL VALUATIONS, ASSESSED VALUATIONS, TOTAL ASSESSED VALUE, Total Assessed Value as Equalized by the Board of Review, FINAL EQUALIZED VALUE.

(CONT ON NEXT PAGE)

Cass County, Minnesota, for Taxes for the Year 1961.

Table with columns: SOLD FOR TAXES, VALUATIONS BY SCHOOL DISTRICTS AS EQUALIZED BY DEPARTMENT OF TAXATION, Tax Including State Homestead, State Tax on Non-Homestead, SPECIAL TAXES, SPECIAL TAXES, TOTAL TAXES, PAID, WHEN PAID, Number of, March Settlement 1962, June Settlement 1962, Penalty, November Settlement 1962, Penalty, Collections to First Monday in January 1963, Delinquent on First Monday in January 1963, Total Delinquent Tax and Penalty, REMARKS.

divided on pages 3-4-5-6-7-8-9-10-11-12-13-14-15-16-17-18-19-20

Little Wolf Look-out

Supplemental Plat Bag-20-Me-Ming Beach

Auditors Plat # 3











Assessment Roll and Tax List of Real Property in the

*Town of Plover*

\* Indicate Type of Property: R-Residential, C-Commercial, I-Industrial, U-Utility, F-Farm, L-Lakeshore, T-Timber, M-Mineral

Form 130 MILLER-DAVIS CO., MINNEAPOLIS

IN WHOSE NAME ASSESSED	DESCRIPTION OF PROPERTY				No. School District	Indicate Homestead Yes or No	Agricultural Use Yes or No	Indicate Type of Property	ASSESSED VALUATIONS												Total Assessed Value as Equalized by the Board of Review	FINAL EQUALIZED VALUE
	SUBDIVISION	Sec. of Lot	Town or Block	Rng.					Number of Acres of Land	TRUE AND FULL VALUATIONS		RURAL			ALL OTHER			Machinery Permanently Attached to Real Estate	Seasonal and Recreational Cabins	TOTAL ASSESSED VALUE		
										LAND Exclusive of Structures and Improvements	BUILDINGS and Other Structures	MACHINERY Permanently Attached to Real Estate	TOTAL True and Full Value	Homestead Up to \$4,000 20%	Over \$4,000 and Non-Homestead 33 1/3%	Timber Land Class 3e 20%	Homestead Up to \$4,000 25%					
	SUBDIVISION	Acres	100ths					Dollars	Dollars	Dollars	Dollars	Dollars	Dollars	Dollars	Dollars	Dollars	Dollars	Dollars				
	SUPPLEMENTAL PLAT OF Bug-E-Zo-We-Ning Beach																					
Edna R. Hanson		1	E		115	no	L															
Otto & Mary Mae Norenberg		2			70	"	"															
" " " "		3			70	"	"															
Lawell V. & Viola L. Lindberg		4			70	"	"															
" " " "		5			70	"	"															
Anna M. Hellsten & James L. Lambrecht		6			70	yes	L															
" " " "		7			70	"	"															
" " " "		8			70	"	"															
" " " "		9			70	"	"															
" " " "		10			70	"	"															
" " " "		11			70	yes	L															
Henry & Caroline E. Hanson		12			yes	no	R		200						166							
" " " "		13			yes	"	L															
Henry J. & Caroline E. Hanson		14			yes	"	"															
Albert C. & Edna R. Hanson		15			no	yes	"															
Edna R. Hanson		16			no	"	"															

Cass County, Minnesota, for Taxes for the Year 1961.

SOLD FOR TAXES	VALUATIONS BY SCHOOL DISTRICTS AS EQUALIZED BY DEPARTMENT OF TAXATION						Tax Including State Homestead	State Tax on Non-Homestead	SPECIAL TAXES	SPECIAL TAXES	TOTAL TAXES	PAID	WHEN PAID	Number of Receipt	March Settlement 1962	June Settlement 1962	Penalty	November Settlement 1962	Penalty	Collections to First Monday in January 1963	Penalty	Delinquent on First Monday in January 1963	Total Delinquent Tax and Penalty	REMARKS
	District No.	District No.	District No.	District No.	District No.	District No.																		
	Rate	Rate	Rate	Rate	Rate	Rate																		
	Dollars	Dollars	Dollars	Dollars	Dollars	Dollars	\$ cts.	\$ cts.	\$ cts.	\$ cts.	\$ cts.	Month Day Year	\$ cts.	\$ cts.	\$ cts.	\$ cts.	\$ cts.	\$ cts.	\$ cts.	\$ cts.	\$ cts.	\$ cts.	\$ cts.	
1				12			396	10			406	1st HALF PAID OCT 30 1962	17940										9575	
2				12			396	10			406	2nd HALF PAID MAY 31 1962	9340										9585	
3				12			396	10			406	1st HALF PAID OCT 30 1962	17940											
4				12			396	10			406	2nd HALF PAID MAY 31 1962	9340										9555	
5				12			396	10			406	PAID IN FULL APR 23 1962	9607											
6				12			396	10			406	PAID IN FULL MAY 31 1962											9556	
7				12			396	10			406	PAID IN FULL MAY 31 1962												
8				12			396	10			406	PAID IN FULL MAY 31 1962	11539											
9				12			396	10			406	PAID IN FULL MAY 31 1962												
10				12			396	10			406	PAID IN FULL MAY 31 1962												
11				12			396	10			406	PAID IN FULL MAY 31 1962												
12							5890				5890	PAID IN FULL MAY 10 1962	78155										9614	
13							284				284	PAID IN FULL MAY 10 1962												
14							284				284	PAID IN FULL MAY 10 1962												
15				12			396	10			406	1st HALF PAID MAY 31 1962	17940										9575	
16				12			396	10			406	2nd HALF PAID OCT 30 1962	9340											
17																								
18																								
19																								
20							6458				6458													
							5148	120			5148													
							338				338													
							11606				11606													

At Nung H.

Supplemental Plat Bug-E-Zo-We-Ning Beach

Little Wolf Look-out

Auditors Plat # 3

Assessment Roll and Tax List of Real Property in the Town of Pike Bay

\* Indicate Type of Property: R-Residential, C-Commercial, I-Industrial, U-Utility, F-Farm, L-Lakeshore, T-Timber, M-Mineral

Cass County, Minnesota, for Taxes for the Year 1961.

Form 50 MILLER-DAVIS CO., MINNEAPOLIS

Table with columns: IN WHOSE NAME ASSESSED, DESCRIPTION OF PROPERTY, TRUE AND FULL VALUATIONS, ASSESSED VALUATIONS, VALUATIONS BY SCHOOL DISTRICTS AS EQUALIZED BY DEPARTMENT OF TAXATION, Tax Including State Homestead, SPECIAL TAXES, TOTAL TAXES, PAID, WHEN PAID, Number of Receipt, March Settlement, June Settlement, Penalty, November Settlement, Penalty, Collections to First Monday in January 1963, Delinquent on First Monday in January 1963, Total Delinquent Tax and Penalty, REMARKS. Includes handwritten entries for names like Katrina Olson, Julius & Jesse A. Stephenson, etc.

At Nona P.

Supplemental Plat Bug-E-Zo-We-Ning Beach

Little Point Look-out

Auditors Plat # 3



Assessment Roll and Tax List of Real Property in the Town of Pike Day

\* Indicate Type of Property: R-Residential, C-Commercial, I-Industrial, U-Utility, F-Farm, L-Lakeshore, T-Timber, M-Mineral

Table with columns: IN WHOSE NAME ASSESSED, DESCRIPTION OF PROPERTY, TRUE AND FULL VALUATIONS, ASSESSED VALUATIONS, VALUATIONS BY SCHOOL DISTRICTS AS EQUALIZED BY DEPARTMENT OF TAXATION, Tax Including State Homestead, State Tax on Non-Homestead, SPECIAL TAXES, TOTAL TAXES, PAID, WHEN PAID, Number of Receipt, March Settlement 1962, June Settlement 1962, November Settlement 1962, Collections to First Monday in January 1963, Delinquent on First Monday in January 1963, Total Delinquent Tax and Penalty, REMARKS.

As Nunc Pro Tunc

Supplemental Plat Bug-E-Zo-We-Ning Beach

Auditors Plat # 3

Little Wolf Look-out

Assessment Roll and Tax List of Real Property in the Town of Pike Lake

\* Indicate Type of Property: R-Residential, C-Commercial, I-Industrial, U-Utility, F-Farm, L-Lakeshore, T-Timber, M-Mineral

Cass County, Minnesota, for Taxes for the Year 1961.

Table with columns: IN WHOSE NAME ASSESSED, SUBDIVISION, Sec. or Lot, Town or Block, Rng., Number of Acres of Land, No. School District, Indicate Home-Head Yes or No, Agr. or Sens. Recr. Yes or No, Indicate Type of Property, TRUE AND FULL VALUATIONS (LAND, BUILDINGS, MACHINERY, TOTAL), RURAL (Homestead, Over \$4,000), ALL OTHER (Homestead, Over \$4,000), MACHINERY, Seasonal and Recreational Cabins, TOTAL ASSESSED VALUE, Total Assessed Value as Equalized by the Board of Review, FINAL EQUALIZED VALUE.

Table with columns: SOLD FOR TAXES, VALUATIONS BY SCHOOL DISTRICTS AS EQUALIZED BY DEPARTMENT OF TAXATION (District No., Rate, Mills), Tax Including State Homestead, State Tax on Non-Homestead, SPECIAL TAXES, TOTAL TAXES, PAID, WHEN PAID (Month, Day, Year), Number of Receipt, March Settlement 1962, June Settlement 1962, Penalty, November Settlement 1962, Penalty, Collections to First Monday in January 1963, Penalty, Delinquent on First Monday in January 1963, Total Delinquent Tax and Penalty, REMARKS.

AN NONG PLAT

Supplemental Plat Bug-E-Zo-We-Ning Beach

Auditors Plat # 3

Little Wolf Look-out





