

Assessment of Taxes

COLLECTIONS OF TAXES OF 1967 OF *Pike* CASS COUNTY, MINNESOTA

Form 336 - BULLETIN BOARD, MINNEAPOLIS

NAME OF OWNER

1

2

3

4

5

6

7

8

FUNDS	MARCH SETTLEMENT 19.6.2.	JUNE SETTLEMENT 19.6.2.	NOV. SETTLEMENT 19.6.2.	Amount Collected from Nov. 19.6.2. to First Monday in Jan. 19.6.2.	REDUCTIONS	Total Reductions and Collect-1	BALANCE UNCOLLECTED	ADDITIONS	Total Uncollected to First Monday in January, 19.6.2.
State-Non-Homestead	759 18	183 44	117 11	258					
State-Homestead	531 97	227 02	152 51	451					
County Revenue	3235 54	1320 60	899 32	2507					
County Road and Bridge	1755 58	716 55	487 96	1360					
County Welfare	5029 74	2032 91	1398 02	3895					
County Bond Interest	95 68	39 05	26 59	74					
C. N. Bldg.	175 56	71 65	48 80	136					
Agri. Assn.	43 89	17 91	12 20	34					
Civ. Def.	57 93	23 65	16 10	45					
Town Revenue	171 17	69 86	47 58	133					
Town Road and Bridge	348 53	162 66	110 76	309					
Town State Loan									
<i>Fire</i>	171 17	69 86	47 58	133					
School Local 1 Mill	4314 59	1237 24	904 58	1924					
School Special									
School State Loan									
Deficiency	8163 46	3331 95	2269 03	6326					
Tuition									
Transportation									
C. O.	3511 16	1433 10	975 43	2721					
B. + D.	1316 69	537 41	365 97	1021					
PERA	614 45	550 80	170 79	476					
<i>Welf. Def.</i>	955 91	390 16	265 70	740					
<i>PERA</i>	497 72	203 14	138 34	386					
	31799 42	12358 96	8454 87	229 32					

	SCHOOL DISTRICT NO.	LOCAL 1 MILL	SPECIAL	STATE LOAN	Deficiency	C. O.	B. + D.	PERA	TOTALS
MARCH SETTLEMENT	115A 1157A		7436 4240 23		27664 788682	11898 3392 18	4462 1272 07	2082 59363	53542 1738493
	Totals		4314 59		8163 46	3511 16	1316 69	614 45	17920 35
JUNE SETTLEMENT	115A 1157A		554 13 683 11		2061 37 1270 58	886 61 546 49	332 48 204 93	155 16 95 64	3989 75 2800 75
	Totals		1237 24		3331 95	1433 10	537 41	250 80	6790 50
NOVEMBER SETTLEMENT	115A 1157A		315 33 589 25		1173 01 1096 02	504 52 471 41	187 19 176 78	88 29 82 50	2270 34 2415 96
	Totals		904 58		2269 03	975 43	365 97	170 79	4686 30
NOVEMBER to JANUARY	115A 1157A		1478 446		5498 828	2365 356	887 134	414 62	10642 1826
	Totals		1924		6326	2721	1021	476	12468
ADDITIONS									
	Totals								
REDUCTIONS									
	Totals								

Redistrict

AHNING PT

Supplemental Plat
Brg-S-20-Me-Ming Beach

Auditors Plat

Assessment Roll and Tax List of Real Property in the Town of Pike Day

Cass County, Minnesota, for Taxes for the Year 1961.

* Indicate Type of Property: R-Residential, C-Commercial, I-Industrial, U-Utility, F-Farm, L-Lakeshore, T-Timber, M-Mineral

Table with columns: IN WHOSE NAME ASSESSED, DESCRIPTION OF PROPERTY, TRUE AND FULL VALUATIONS, ASSESSED VALUATIONS, VALUATIONS BY SCHOOL DISTRICTS AS EQUALIZED BY DEPARTMENT OF TAXATION, Tax Including State Homestead, State Tax on Non-Homestead, SPECIAL TAXES, TOTAL TAXES, PAID, WHEN PAID, Number of Receipt, March Settlement, June Settlement, November Settlement, Collections to First Monday in January 1963, Delinquent on First Monday in January 1963, Total Delinquent Tax and Penalty, REMARKS.

Real Estate

HNUNG P1

Supplemental Plat Big-8-20-Me-Ming Beach

Auditors Plat # 3

Assessment Roll and Tax List of Real Property in the Town of Pike Bay, Cass County, Minnesota, for Taxes for the Year 1961.

* Indicate Type of Property: R-Residential, C-Commercial, I-Industrial, U-Utility, F-Farm, L-Lakeshore, T-Timber, M-Mineral

Re-assessed 1967

Table with columns: IN WHOSE NAME ASSESSED, DESCRIPTION OF PROPERTY, TRUCK AND FULL VALUATIONS, ASSESSED VALUATIONS, VALUATIONS BY SCHOOL DISTRICTS AS EQUALIZED BY DEPARTMENT OF TAXATION, Tax including State Homestead, SPECIAL TAXES, TOTAL TAXES, PAID, WHEN PAID, Number of Receipt, March Settlement, June Settlement, November Settlement, Collections to First Monday in January, Delinquent on First Monday in January, Total Delinquent Tax and Penalty, REMARKS.

(CONT NEXT PAGE-SEC. 8)

44 NONG PT

Supplemental Plat Bug-20-Me-Ming Beach

Auditors Plat # 3

Assessment Roll and Tax List of Real Property in the Town of Pike Lake

* Indicate Type of Property: R-Residential, C-Commercial, I-Industrial, U-Utility, F-Farm, L-Lakeshore, T-Timber, M-Mineral

Table with columns: IN WHOSE NAME ASSESSED, DESCRIPTION OF PROPERTY, TRUE AND FULL VALUATIONS, ASSESSED VALUATIONS, and FINAL EQUALIZED VALUE. Includes handwritten entries for various property owners like H.H. Richmond and Frank Leike.

(Cont'd NEXT page)

Cass County, Minnesota, for Taxes for the Year 1961.

Table with columns: VALUATIONS BY SCHOOL DISTRICTS AN EQUALIZED BY DEPARTMENT OF TAXATION, TAXES, PAID, WHEN PAID, and REMARKS. Includes handwritten entries for various districts and tax amounts.

44 NUNG PT

Supplemental Plat Big 5-20-M-Ming Beach

Auditors Plat # 3

Assessment Roll and Tax List of Real Property in the Town of Pike Day

Cass County, Minnesota, for Taxes for the Year 1961.

FORM 500 MILLER-DAVIS CO., MINNEAPOLIS * Indicate Type of Property: R-Residential, C-Commercial, I-Industrial, U-Utility, F-Farm, L-Lakeshore, T-Timber, M-Mineral

Table with columns: IN WHOSE NAME ASSESSED, DESCRIPTION OF PROPERTY, TRUE AND FULL VALUATIONS, ASSESSED VALUATIONS, VALUATIONS BY SCHOOL DISTRICTS AS EQUALIZED BY DEPARTMENT OF TAXATION, TAXES, PAID, WHEN PAID, Number of Receipt, March Settlement, June Settlement, November Settlement, Collections to First Monday in January 1963, Delinquent on First Monday in January 1963, Total Delinquent Tax and Penalty, REMARKS.

Caroline Vivian Barr (Indian)

John Joseph Kind (Indian)

Northwest Paper Company

Carl & Gertrude M. Bispertini

Ida J. Falk Jacobs

Ralph & Marion S. Lorenflo

" " "

Order per Court Order District No. 115.

Supplemental Plat Bug-E-Lo-Ming Beach

Auditors Plat # 3

Assessment Roll and Tax List of Real Property in the Town of Pike Lake
* Indicate Type of Property: R-Residential, C-Commercial, I-Industrial, U-Utility, F-Farm, L-Lakeshore, T-Timber, M-Mineral

IN WHOSE NAME ASSESSED	DESCRIPTION OF PROPERTY				No. School District	Indicate Homestead Yes or No	Agricultural Use Yes or No	Indicate Type of Property	TRUE AND FULL VALUATIONS				ASSESSED VALUATIONS							FINAL EQUALIZED VALUE		
	SUBDIVISION	Sec. or Lot	Town or Block	Number of Acres of Land					LAND Exclusive of Structures and Improvements	BUILDINGS and Other Structures	MACHINERY Permanently Attached to Real Estate	TOTAL True and Full Value	RURAL			ALL OTHER					TOTAL ASSESSED VALUE	Total Assessed Value as Equalized by the Board of Review
													Homestead Up to \$4,000 20%	Over \$4,000 and Non-Homestead 33 1/2%	Timber Land Class 3e 20%	Homestead Up to \$4,000 25%	Over \$4,000 and Non-Homestead 40%	MACHINERY Permanently Attached to Real Estate 33 1/2%	Seasonal and Recreational Cabins 33 1/2%			
				Acres 100ths				Dollars	Dollars	Dollars	Dollars	Dollars	Dollars	Dollars	Dollars	Dollars	Dollars	Dollars				
	N E 1/4 of N E 1/4	15	14531		115																	
	N W 1/4 of N E 1/4																					
	S W 1/4 of N E 1/4																					
	S E 1/4 of N E 1/4																					
	N E 1/4 of N W 1/4																					
	N W 1/4 of N W 1/4																					
	S W 1/4 of N W 1/4																					
	S E 1/4 of N W 1/4																					
	N E 1/4 of S W 1/4																					
	N W 1/4 of S W 1/4																					
	S W 1/4 of S W 1/4																					
	S E 1/4 of S W 1/4																					
	N E 1/4 of S E 1/4																					
	N W 1/4 of S E 1/4																					
	S W 1/4 of S E 1/4																					
	S E 1/4 of S E 1/4																					

Village of Cass Lake

Exempt

Cass County, Minnesota, for Taxes for the Year 1961.

SOLD FOR TAXES	VALUATIONS BY SCHOOL DISTRICTS AS EQUALIZED BY DEPARTMENT OF TAXATION						Tax Including State Homestead	State Tax on Non-Homestead	SPECIAL TAXES	SPECIAL TAXES	TOTAL TAXES	PAID	WHEN PAID	Number of Receipt	March Settlement 1962	June Settlement 1962	Penalty	November Settlement 1962	Penalty	Collections to First Monday in January 1963	Penalty	Delinquent on First Monday in January 1963	Total Delinquent Tax and Penalty	REMARKS
	District No.	District No.	District No.	District No.	District No.	District No.																		
	Rate	Rate	Rate	Rate	Rate	Rate																		

44-11068-17

Supplemental Plat Bug-B-20-Me-Jing-Beech

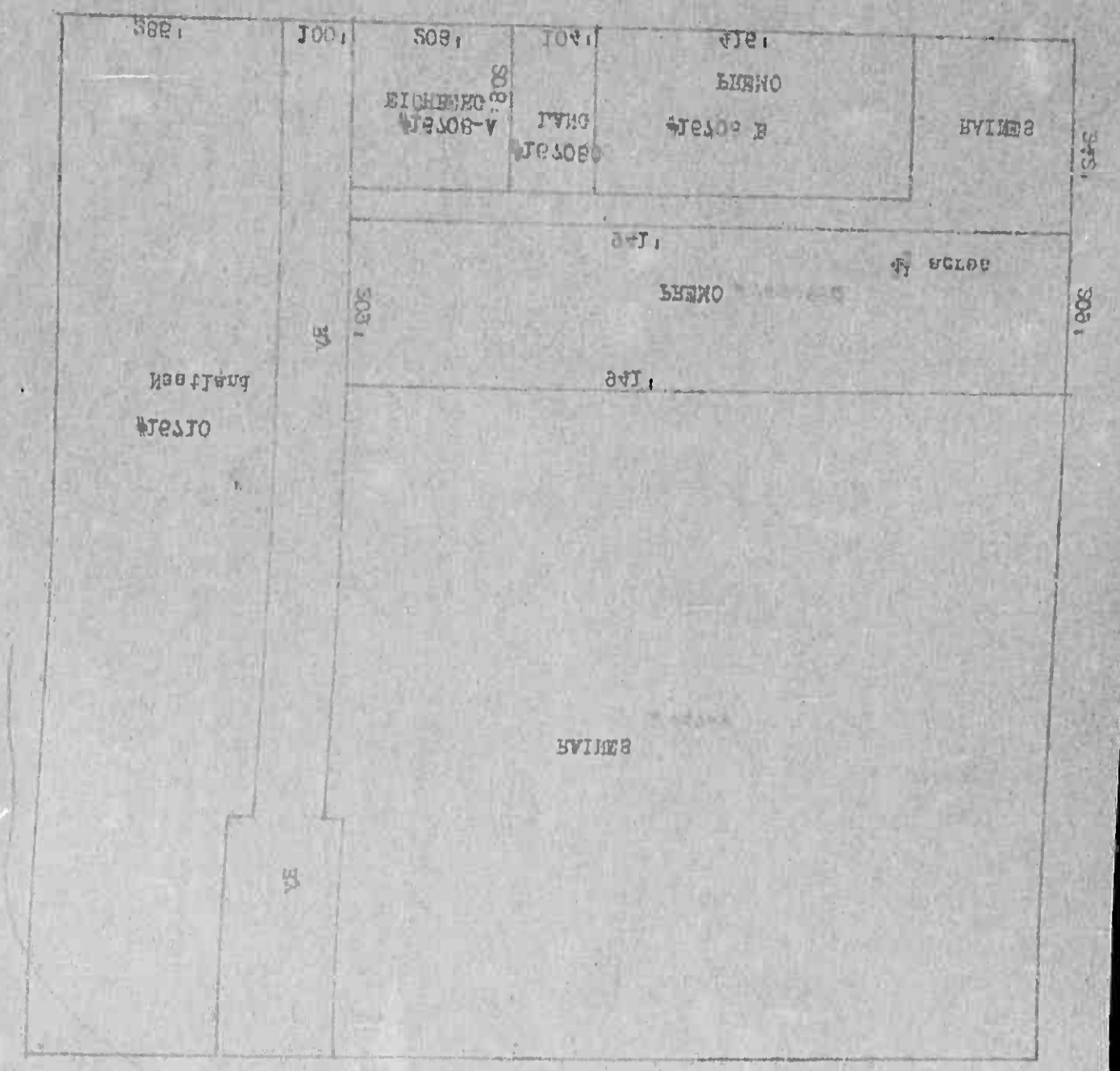
Auditors Plat # 3

Assessment Roll and Tax List of Real Property in the Town of Law of Pike Co.

* Indicate Type of Property: R-Residential, C-Commercial, I-Industrial, U-Utility, F-Farm, L-Lakeshore, T-Timber, M-Mineral

Form 501, MILLER-BROWN CO., MINNEAPOLIS

IN WHOSE NAME ASSESSED	DESCRIPTION OF PROPERTY			School District	Indicate Homestead Yes or No	Agricultural Use Yes or No	Machinery Permanently Attached to Real Estate	TYPE AND FULL VALUATIONS										Total Assessed Value as Equalized by the Board of Review	FINAL EQUALIZED VALUE		
	SUBDIVISION	Sec. Town or Lot	Number of Acres of Land					LAND Exclusive of Structures and Improvements	BUILDINGS and Other Structures	MACHINERY Permanently Attached to Real Estate	TOTAL True and Full Value	RURAL		ALL OTHER						MACHINERY Permanently Attached to Real Estate	Seasonal and Recreational Cabins
												Homestead Up to \$4,000	Over \$4,000 and Non-Homestead	Timber Land Class 3c	Homestead 25%	Over \$4,000 and Non-Homestead 40%	33 1/3%				
			Acres 100ths	Dollars	Dollars	Dollars	Dollars	Dollars	Dollars	Dollars	Dollars	Dollars	Dollars	Dollars	Dollars	Dollars	Dollars				
J. S. of America	NEW NEN	16 145.31	115																		
Doland L. & Carroll Brown	2 ACS OF SW 1/4 OF SW 1/4 OF RY	1	2																		
Nellie E. Hough	W 1/2 OF E 635' OF N. 535' OF NE 1/4 OF SW 1/4 OF RY	1																			
P. H. Campbell	E 1/2 OF GOVT LOT 1 LESS RY	1	18.57																		
J. S. of America	NEW NEN																				
Ray & Dagmar L. Laird	W 1/2 OF W 1/2 OF GOVT LOT 1	1	9.23																		
Alice L. Lundgren	GOVT LOT 1	1	38.36																		
"	SE 1/4 OF SW 1/4 OF RY	1	10																		
Ernest A. Newberg	SE 1/4 OF NW 1/4 OF RY & less E. 100' of S. 548' & less W. 33' of E. 183' of S. 548'	1	22.74																		
Alice L. Lundgren	NEW NEN W. OF RY	1	10																		
"	NEW NEN N. OF CREEK	1	30																		
Paul R. Ke Witt	SW 1/4 SW 1/4	1																			
Walter S. & Nora O. Raines	SW 1/4 SW 1/4 OF RY LESS RY	1	25.66																		
Delroy & Betty M. Ellis	NE 1/4 OF SW 1/4 OF S. N. RY LESS SOLD	1	27																		
LaNel & Stella Westlund	SE 1/4 OF SW 1/4 W. OF RY	1	10																		
Am. A. Clark	E. 100' OF S. 548' OF SE 1/4 OF NW 1/4	1	1.66																		
Walter S. & Nora O. Raines	W. OF RY LESS SOLD	1	28.20																		
Ronald F. & Isabelle D. Bohm	NEW NEN	1	1																		
Ronald E. & Alice M. Hanson	E 1/2 OF W 1/2 OF GOVT LOT 1 LESS RY	1	9.23																		
Carl H. & Emily J. Koppin	1/2 OF SW 1/4 OF RY (CONT NEXT PAGE)	1	32.25																		



2001 70 10 120 5' 01
207 02 207

Cass County, Minnesota, for Taxes for the Year 1961.

SOLD FOR TAXES	VALUATIONS BY SCHOOL DISTRICTS AS EQUALIZED BY DEPARTMENT OF TAXATION					Tax Including State Homestead	State Tax on Non-Homestead	SPECIAL TAXES	SPECIAL TAXES	TOTAL TAXES	PAID	WHEN PAID	Number of Receipts	March Settlement 1962	June Settlement 1962	Penalty	November Settlement 1962	Penalty	Collections to First Monday in January 1963	Penalty	Delinquent on First Monday in January 1963	Total Delinquent Tax and Penalty	REMARKS
	District No.	District No.	District No.	District No.	District No.																		
	Rate	Rate	Rate	Rate	Rate																		
	Dollars	Dollars	Dollars	Dollars	Dollars	\$ cts.	\$ cts.	\$ cts.	\$ cts.	\$ cts.	Month Day Year		\$ cts.	\$ cts.	\$ cts.	\$ cts.	\$ cts.	\$ cts.	\$ cts.	\$ cts.	\$ cts.	\$ cts.	
	110	43	174	180	24	84	24	84	24	84	24	84	24	84	24	84	24	84	24	84	24	84	
	110	43	174	180	24	84	24	84	24	84	24	84	24	84	24	84	24	84	24	84	24	84	
	110	43	174	180	24	84	24	84	24	84	24	84	24	84	24	84	24	84	24	84	24	84	
	110	43	174	180	24	84	24	84	24	84	24	84	24	84	24	84	24	84	24	84	24	84	
	110	43	174	180	24	84	24	84	24	84	24	84	24	84	24	84	24	84	24	84	24	84	
	110	43	174	180	24	84	24	84	24	84	24	84	24	84	24	84	24	84	24	84	24	84	
	110	43	174	180	24	84	24	84	24	84	24	84	24	84	24	84	24	84	24	84	24	84	
	110	43	174	180	24	84	24	84	24	84	24	84	24	84	24	84	24	84	24	84	24	84	
	110	43	174	180	24	84	24	84	24	84	24	84	24	84	24	84	24	84	24	84	24	84	
	110	43	174	180	24	84	24	84	24	84	24	84	24	84	24	84	24	84	24	84	24	84	
	110	43	174	180	24	84	24	84	24	84	24	84	24	84	24	84	24	84	24	84	24	84	
	110	43	174	180	24	84	24	84	24	84	24	84	24	84	24	84	24	84	24	84	24	84	
	110	43	174	180	24	84	24	84	24	84	24	84	24	84	24	84	24	84	24	84	24	84	
	110	43	174	180	24	84	24	84	24	84	24	84	24	84	24	84	24	84	24	84	24	84	
	110	43	174	180	24	84	24	84	24	84	24	84	24	84	24	84	24	84	24	84	24	84	
	110	43	174	180	24	84	24	84	24	84	24	84	24	84	24	84	24	84	24	84	24	84	
	110	43	174	180	24	84	24	84	24	84	24	84	24	84	24	84	24	84	24	84	24	84	
	110	43	174	180	24	84	24	84	24	84	24	84	24	84	24	84	24	84	24	84	24	84	
	110	43	174	180	24	84	24	84	24	84	24	84	24	84	24	84	24	84	24	84	24	84	
	110	43	174	180	24	84	24	84	24	84	24	84	24	84	24	84	24	84	24	84	24	84	
	110	43	174	180	24	84	24	84	24	84	24	84	24	84	24	84	24	84	24	84	24	84	
	110	43	174	180	24	84	24	84	24	84	24	84	24	84	24	84	24	84	24	84	24	84	
	110	43	174	180	24	84	24	84	24	84	24	84	24	84	24	84	24	84	24	84	24	84	
	110	43	174	180	24	84	24	84	24	84	24	84	24	84	24	84	24	84	24	84	24	84	
	110	43	174	180	24	84	24	84	24	84	24	84	24	84	24	84	24	84	24	84	24	84	
	110	43	174	180	24	84	24	84	24	84	24	84	24	84	24	84	24	84	24	84	24	84	
	110	43	174	180	24	84	24	84	24	84	24	84	24	84	24	84	24	84	24	84	24	84	
	110	43	174	180	24	84	24	84	24	84	24	84	24	84	24	84	24	84	24	84	24	84	
	110	43	174	180	24	84	24	84	24	84	24	84	24	84	24	84	24	84	24	84	24	84	
	110	43	174	180	24	84	24	84	24	84	24	84	24	84	24	84	24	84	24	84	24	84	
	110	43	174	180	24	84	24	84	24	84	24	84	24	84	24	84	24	84	24	84	24	84	
	110	43	174	180	24	84	24	84	24	84	24	84	24	84	24	84	24	84	24	84	24	84	
	110	43	174	180	24	84	24	84	24	84	24	84	24	84	24	84	24	84	24	84	24	84	
	110	43	174	180	24	84	24	84	24	84	24	84	24	84	24	84	24	84	24	84	24	84	
	110	43	174	180	24	84	24	84	24	84	24	84	24	84	24	84	24	84	24	84	24	84	
	110	43	174	180	24	84	24	84	24	84	24	84	24	84	24	84	24	84	24	84	24	84	
	110	43	174	180	24	84	24	84	24	84	24	84	24	84	24	84	24	84	24	84	24	84	
	110	43	174	180	24	84	24	84	24	84	24	84	24	84	24	84	24	84	24	84	24	84	
	110	43	174	180	24	84	24	84	24	84	24	84	24	84	24	84	24	84	24	84	24	84	
	110	43	174	180	24	84	24	84	24	84	24	84	24	84	24	84	24	84	24	84	24	84	
	110	43	174	180	24	84	24	84	24	84	24	84	24	84	24	84	24	84	24	84	24	84	
	110	43	174	180	24																		

Assessment Roll and Tax List of Real Property in the

* Indicate

SW 1/4 of SE 1/4 Sec. 16-145-31

Form SCD, MILLER-DAVIS CO., MINNEAPOLIS

Table with columns: IN WHOSE NAME ASSESSED, DESCRIPTION OF PROPERTY, Subdivision, Sec. or Lot, Town or Block, Reg., Number of Acres of Land, No. School District, Indicate Home-stand, Agr. or Sens. Rec., Indicate Type of Property, L.A.N. Excl. Str. and Improv.



Table with columns: Total Assessed Value as Equalized by the Board of Review, FINAL EQUALIZED VALUE.

Main tax table with columns: VALUATIONS BY SCHOOL DISTRICTS AN EQUALIZED BY DEPARTMENT OF TAXATION, Tax Including State Homestead, State Tax on Non-Homestead, SPECIAL TAXES, TOTAL TAXES, PAID, WHEN PAID, Number of Receipt, March Settlement, June Settlement, November Settlement, Collections to First Monday in January 1963, Delinquent on First Monday in January 1963, Total Delinquent Tax and Penalty, REMARKS.

Cass County, Minnesota, for Taxes for the Year 1961.

(CONT'D NEXT PAGE)

Vertical text on the right edge: AH NUNG PR

Vertical text on the right edge: Supplemental Plat Bug-B-20-Me-Fire Beach

Vertical text on the right edge: Auditors Plat # 3

Assessment Roll and Tax List of Real Property in the Town of Pike Bay

* Indicate Type of Property: R-Residential, C-Commercial, I-Industrial, U-Utility, F-Farm, L-Lakeshore, T-Timber, M-Mineral

Form 500-MILLS-DAVIS CO., MINNEAPOLIS

Table with columns: IN WHOSE NAME ASSESSED, DESCRIPTION OF PROPERTY, TRUE AND FULL VALUATIONS (RURAL, ALL OTHER, MACHINERY, Seasonal and Recreational Cabins, TOTAL ASSESSED VALUE), Total Assessed Value as Equalized by the Board of Review, FINAL EQUALIZED VALUE.

Wayne E. Heemstra

Cass County, Minnesota, for Taxes for the Year 1961.

Table with columns: SOLID FOR TAXES, VALUATIONS BY SCHOOL DISTRICTS AS EQUALIZED BY DEPARTMENT OF TAXATION, Tax Including State Homestead, State Tax on Non-Homestead, SPECIAL TAXES, TOTAL TAXES, PAID, WHEN PAID, Number of Receipt, March Settlement 1962, June Settlement 1962, Penalty, November Settlement 1962, Collections to First Monday in January 1963, Delinquent on First Monday in January 1963, Total Delinquent Tax and Penalty, REMARKS.

Real Estate

Supplemental Plat Bug-B-40-116-Ming Beach

Auditors Plat # 3

Assessment Roll and Tax List of Real Property in the Town of Pike Bay

Cass County, Minnesota, for Taxes for the Year 1961.

* Indicate Type of Property: R-Residential, C-Commercial, I-Industrial, U-Utility, F-Farm, L-Lakeshore, T-Timber, M-Mineral

Table with columns: IN WHOSE NAME ASSESSED, DESCRIPTION OF PROPERTY, TRUE AND FULL VALUATIONS, ASSESSED VALUATIONS, VALUATIONS BY SCHOOL DISTRICTS, TAX INCLUDING STATE HOMESTEAD, SPECIAL TAXES, TOTAL TAXES, PAID, WHEN PAID, Number of Receipt, March Settlement, June Settlement, November Settlement, Collections to First Monday, Delinquent on First Monday, Total Delinquent Tax and Penalty, REMARKS.

AN UNG PT

Supplemental Plat #3 Bug-R-Zo-Wa-Jing Beach

Auditors Plat #3

Assessment Roll and Tax List of Real Property in the Town of Pike Bay

Cass County, Minnesota, for Taxes for the Year 1961.

* Indicate Type of Property: R-Residential, C-Commercial, I-Industrial, U-Utility, F-Farm, L-Lakeshore, T-Timber, M-Mineral

Table with columns: IN WHOSE NAME ASSESSED, DESCRIPTION OF PROPERTY, TRUE AND FULL VALUATIONS, ASSESSED VALUATIONS, VALUATIONS BY SCHOOL DISTRICTS AS EQUALIZED BY DEPARTMENT OF TAXATION, TAX INCLUDING STATE HOMESTEAD, SPECIAL TAXES, TOTAL TAXES, PAID, WHEN PAID, Number of Receipt, March Settlement 1962, June Settlement 1962, Penalty, November Settlement 1962, Collections to First Monday in January 1963, Delinquent on First Monday in January 1963, Total Delinquent Tax and Penalty, REMARKS.

AMONG PT

Supplemental Plat # 2 Bug-B-Zo-Me-Jing Beach

Auditors Plat # 3

9529

9558

14747

9558

25206

9530

10727

9530

9531

15374

2388

no penalty charged in time

George & Hazel Elliott
State of Minnesota (cont to: Elmer Kallstrom)
The Northwest Paper Company

State of Minnesota (cont to: Elmer Kallstrom)
Beatrice Polach Harner
Leland E. Russell
The Northwest Paper Company

Leland E. Russell

Robert J. Richards

640

681
360
1041

34332 326

34658

14543

15807

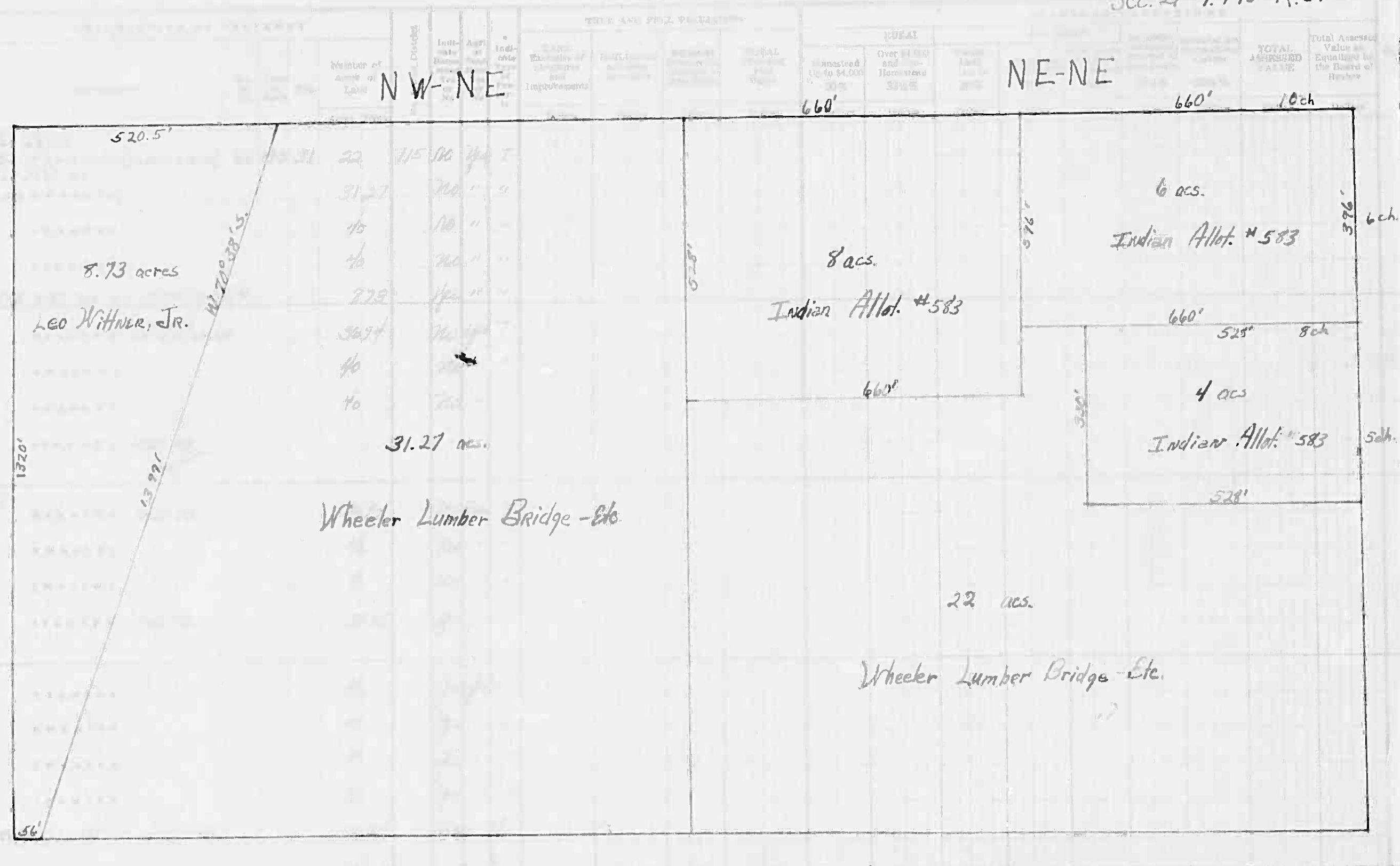
2388

Assessment Roll and Tax List of Real Property in the

Cass County, Minnesota, for Taxes for the Year 1961.

IN WHOSE NAME ASSESSED

Wheeler Lumber Bridge & Supply Co.
 " " " " "
 The Northwest Paper Co.
 " " " " "
 Leo Hiltner, Jr.
 Reuben H. & Sarah H. Diller
 The Northwest Paper Company
 " " " " "
 State of Minnesota
 State of Minnesota (cont to: Elmer Kullstrom)
 The Northwest Paper Company
 John A. Zilla
 Virgil Z. & Ethel Zetta
 Mark N. & Eva H. Landie
 " " " "
 " " " "
 " " " "
 The Northwest Paper Company



SOLD FOR TAXES	VALUATIONS BY SCHOOL DISTRICTS AS EQUALIZED BY DEPARTMENT OF TAXATION						Tax Including State Homestead	State Tax on Non-Homestead	SPECIAL TAXES	SPECIAL TAXES	TOTAL TAXES	PAID	WHEN PAID	Number of Receipt	March Settlement 1962	June Settlement 1962	Penalty	November Settlement 1962	Penalty	Collections to First Monday in January 1963	Penalty	Delinquent on First Monday in January 1963	Total Delinquent Tax and Penalty	REMARKS
	District No.	District No.	District No.	District No.	District No.	District No.																		
								9.12																
							40	1320	36		1356	1	PAID IN FULL MAY 3 1 1962			73	56						9523	
							59	1946	54		2000	2	PAID IN FULL MAY 3 1 1962	16951		26	00							
							80	2638	92		2710	3	PAID IN FULL MAY 3 1 1962	16906		27	10						14727	
							80	2638	92		2710	4	PAID IN FULL MAY 3 1 1962			27	10							
SOLD FOR TAXES							4238	7850			7850	5	PAID IN FULL MAY 7 1962	8566		78	50						2557	
SOLD FOR TAXES							67	2210	62		2272	6											2272	
							80	2638	74		2712	7	PAID IN FULL MAY 3 1 1962			27	12						14728	
							80	2638	74		2712	8	PAID IN FULL MAY 3 1 1962	16907		27	12							
												9												
												10											2538	
SOLD FOR TAXES							194	6398	176		6574	11											6574	
							80	2638	74		2712	12	PAID IN FULL MAY 3 1 1962	16907		27	12						14728	
							65	2144	60		2204	13	PAID IN FULL AUG 2 9 1962	16676				22	04	55			2524	
												14	1st HALF PAID MAY 3 1 1962	14620										
												14	2nd HALF PAID OCT 3 1 1962	18508		11	54						14725	
												15	1st HALF PAID AUG 27 1962											
												16	2nd HALF PAID MAY 3 1 1962											
							52	1714			1714	16	1st HALF PAID AUG 27 1962	16639										
							50	1650			1650	17	1st HALF PAID MAY 3 1 1962	11525		71	41							
							50	1650			1650	18	2nd HALF PAID AUG 27 1962											
							50	1650			1650	18	1st HALF PAID MAY 3 1 1962											
							281	9268			9268	19	2nd HALF PAID AUG 27 1962											
												19	1st HALF PAID MAY 3 1 1962											
							78	2572	90		2642	20	PAID IN FULL MAY 3 1 1962	16907		26	42						14727	
							741	54220	824		55044					356	99			104	99		88	46
							23																	
							1644																	

AH NUNG PT.

Supplemental Plat Bug-8-60-Me-Ning Beach

Inditors Plat # 3

Assessment Roll and Tax List of Real Property in the Town of Pike Bay of Pike Co.

* Indicate Type of Property: R-Residential, C-Commercial, I-Industrial, U-Utility, F-Farm, L-Lakeshore, T-Timber, M-Mineral

Table with columns: IN WHOSE NAME ASSESSED, DESCRIPTION OF PROPERTY, TRUE AND FULL VALUATIONS (RURAL, ALL OTHER, MACHINERY, etc.), ASSESSED VALUATIONS, and FINAL EQUALIZED VALUE.

Cass County, Minnesota, for Taxes for the Year 1961.

Table with columns: SOLD FOR TAXES, VALUATIONS BY SCHOOL DISTRICTS AS EQUALIZED BY DEPARTMENT OF TAXATION, Tax including State Homestead, SPECIAL TAXES, TOTAL TAXES, PAID, WHEN PAID, Number of Receipt, March Settlement, June Settlement, Penalty, November Settlement, Collections to First Monday in January 1963, Delinquent on First Monday in January 1963, Total Delinquent Tax and Penalty, REMARKS.

AN UNG PT

Supplemental Plat Book 20-Me-Ming Beach

Auditors Plat # 3

Assessment Roll and Tax List of Real Property in the Town of Pike Bay

Cass County, Minnesota, for Taxes for the Year 1961.

* Indicate Type of Property: R-Residential, C-Commercial, I-Industrial, U-Utility, F-Farm, L-Lakeshore, T-Timber, M-Mineral

Table with columns: IN WHOSE NAME ASSESSED, DESCRIPTION OF PROPERTY, ASSESSED VALUATIONS (RURAL, ALL OTHER, MACHINERY, etc.), VALUATIONS BY SCHOOL DISTRICTS, TAXES (SPECIAL, TOTAL, PAID), WHEN PAID, and REMARKS. Includes handwritten entries for Steve Swenson, Clifford Hestlund, Herman & Hilding A. Kling, Robert A. Campbell, William R. & Norma D. Rumbke, James & Jack Erickson, and F.A. Campbell.

(CONT'D. ON NEXT PAGE)

Handwritten note: AH NUNG PT

Handwritten note: Supplemental Plat Beach Bug-E-Zo-Me-Ning Beach

Handwritten note: Auditor's Plat # 3

Assessment Roll and Tax List of Real Property in the

Town of Pike Park

* Indicate Type of Property: R-Residential, C-Commercial, I-Industrial, U-Utility, F-Farm, L-Lakeshore, T-Timber, M-Mineral

Table with columns: IN WHOSE NAME ASSESSED, SUBDIVISION, Sec. of Lot, Town or Block, Number of Acres of Land, TRUE AND FULL VALUATIONS (LAND, BUILDINGS, MACHINERY, TOTAL), ASSESSED VALUATIONS (RURAL, ALL OTHER, MACHINERY, Seasonal and Recreational Cabins, TOTAL ASSESSED VALUE), Total Assessed Value as Equalized by the Board of Review, FINAL EQUALIZED VALUE.

(CONT ON NEXT PAGE)

Cass County, Minnesota, for Taxes for the Year 1961.

Table with columns: SOLD FOR TAXES, VALUATIONS BY SCHOOL DISTRICTS AS EQUALIZED BY DEPARTMENT OF TAXATION, Tax Including State Homestead, State Tax on Non-Homestead, SPECIAL TAXES, TOTAL TAXES, PAID, WHEN PAID, Number of Receipt, March Settlement 1962, June Settlement 1962, Penalty, November Settlement 1962, Penalty, Collections to First Monday in January 1963, Delinquent on First Monday in January 1963, Total Delinquent Tax and Penalty, REMARKS.

divided on house 3rd 5th 47 owners request & E. & S.

Little 1011

Supplemental Plat Bag-R-Zo-Me-Ming Beach

Auditors Plat # 3

Assessment Roll and Tax List of Real Property in the

of *Pike* of *Pike*
* Indicate Type of Property: R-Residential, C-Commercial, I-Industrial, U-Utility, F-Farm, L-Lakeshore, T-Timber, M-Mineral

Cass County, Minnesota, for Taxes for the Year 1961.

Ab Nunc Fy

Supplemental Plat Bug-E-Zo-We-Ning Beach

Auditors Plat # 3

IN WHOSE NAME ASSESSED	DESCRIPTION OF PROPERTY				No. School District	Indicate Homestead Yes or No	Agricultural Use Yes or No	Indicate Type of Property	ASSESSED VALUATIONS											Total Assessed Value as Equalized by the Board of Review	FINAL EQUALIZED VALUE				
	SUBDIVISION	Sec. or Lot	Town or Block	Ring					Number of Acres of Land	TRUE AND FULL VALUATIONS			RURAL					MACHINERY Permanently Attached to Real Estate	Seasonal and Recreational Cabins			TOTAL ASSESSED VALUE			
										LAND Exclusive of Structures and Improvements	BUILDINGS and Other Structures	MACHINERY Permanently Attached to Real Estate	Homestead Up to \$4,000 20%	Over \$4,000 and Non-Homestead 33 1/3%	Timber Land Class 3e 20%	Homestead Up to \$4,000 25%	Over \$4,000 and Non-Homestead 40%						33 1/3%	33 1/3%	
	SUPPLEMENTAL PLAT OF Bug-E-Zo-We-Ning Beach				Acres	100th			Dollars	Dollars	Dollars	Dollars	Dollars	Dollars	Dollars	Dollars	Dollars	Dollars	Dollars	Dollars	Dollars	Dollars	Dollars	Dollars	
Edna R. Hanson		1	E		115		L																		
Otto & Mary Mae Norenberg		2			70		"																		
" " " "		3			70		"																		
Lawell V. & Viola L. Lindberg		4			70		"																		
" " " "		5			70		"																		
Anna M. Hellsten & James L. Lambrecht		6			70		L																		
" " " "		7			70		"																		
" " " "		8			70		"																		
" " " "		9			70		"																		
" " " "		10			70		"																		
" " " "		11			70		L																		
Henry & Caroline E. Hanson		12			70		R		200																
" " " "		13			70		L																		
Henry J. & Caroline E. Hanson		14			70		"																		
Albert C. & Edna R. Hanson		15			70		"																		
Edna R. Hanson		16			70		"																		

SOLD FOR TAXES	VALUATIONS BY SCHOOL DISTRICTS AS EQUALIZED BY DEPARTMENT OF TAXATION						Tax Including State Homestead	State Tax on Non-Homestead	SPECIAL TAXES	SPECIAL TAXES	TOTAL TAXES	PAID	WHEN PAID	Number of Receipt	March Settlement 1962	June Settlement 1962	Penalty	November Settlement 1962	Penalty	Collections to First Monday in January 1963	Penalty	Delinquent on First Monday in January 1963	Total Delinquent Tax and Penalty	REMARKS	
	District No.	District No.	District No.	District No.	District No.	District No.																			
	Rate	Rate	Rate	Rate	Rate	Rate																			
	Dollars	Dollars	Dollars	Dollars	Dollars	Dollars	\$ cts.	\$ cts.	\$ cts.	\$ cts.	\$ cts.	Month Day Year	\$ cts.	\$ cts.	\$ cts.	\$ cts.	\$ cts.	\$ cts.	\$ cts.	\$ cts.	\$ cts.	\$ cts.	\$ cts.		
1				12			396	10			406	1st HALF PAID OCT 30 1962	17940		2 03		2 03						9575		
2				12			396	10			406	2nd HALF PAID OCT 30 1962	17940		2 03		2 03						9575		
3				12			396	10			406	1st HALF PAID OCT 30 1962	17940		2 03		2 03						9575		
4				12			396	10			406	2nd HALF PAID OCT 30 1962	17940		2 03		2 03						9575		
5				12			396	10			406	PAID IN FULL APR 23 1962	9609		4 06								9555		
6				12			396	10			406	PAID IN FULL APR 23 1962	9609		4 06								9555		
7				12			396	10			406	PAID IN FULL MAY 31 1962											9555		
8				12			396	10			406	PAID IN FULL MAY 31 1962	11539		24 36								9555		
9				12			396	10			406	PAID IN FULL MAY 31 1962											9555		
10				12			396	10			406	PAID IN FULL MAY 31 1962											9555		
11				12			396	10			406	PAID IN FULL MAY 31 1962											9555		
12							5890				5890	PAID IN FULL MAY 10 1962	18955		6458								9614		
13							284				284	PAID IN FULL MAY 10 1962											9614		
14							284				284	PAID IN FULL MAY 10 1962											9614		
15				12			396	10			406	1st HALF PAID MAY 31 1962	17940		4 06		4 06						9575		
16				12			396	10			406	2nd HALF PAID MAY 31 1962	17940		4 06		4 06						9575		
17																									
18																									
19																									
20							6458				6458	PAID IN FULL MAY 10 1962	18955		107 21		10 15						11736		

Assessment Roll and Tax List of Real Property in the Town of Pike Day

* Indicate Type of Property: R-Residential, C-Commercial, I-Industrial, U-Utility, F-Farm, L-Lakeshore, T-Timber, M-Mineral

Cass County, Minnesota, for Taxes for the Year 1961.

Table with columns for Description of Property, Assessed Valuations (Rural, All Other, Machinery, Seasonal), Final Equalized Value, Sold for Taxes, Valuations by School Districts, and Tax Information (Total, Paid, When Paid, etc.). Includes handwritten entries for names like Kathryn Olson and various tax amounts.

An Nona Pl

Supplemental Plat Bug-E-Zo-We-Ning Beach

Little Hill Look-out

Auditors Plat # 3

Assessment Roll and Tax List of Real Property in the Town of Pike Day

* Indicate Type of Property: R-Residential, C-Commercial, I-Industrial, U-Utility, F-Farm, L-Lakeshore, T-Timber, M-Mineral

Table with columns: IN WHOSE NAME ASSESSED, DESCRIPTION OF PROPERTY, TRUE AND FULL VALUATIONS, ASSESSED VALUATIONS, VALUATIONS BY SCHOOL DISTRICTS AS EQUALIZED BY DEPARTMENT OF TAXATION, Tax Including State Homestead, State Tax on Non-Homestead, SPECIAL TAXES, TOTAL TAXES, PAID, WHEN PAID, Number of Receipts, March Settlement, June Settlement, November Settlement, Collections to First Monday in January 1963, Delinquent on First Monday in January 1963, Total Delinquent Tax and Penalty, REMARKS.

At Nunc Pro Tunc

Supplemental Plat Buy-E-Zo-We-Ning Beach

Auditors Plat # 3

Little Hoist Look-out

