

TAX LIST PAYABLE 1974
MOOSE LAKE

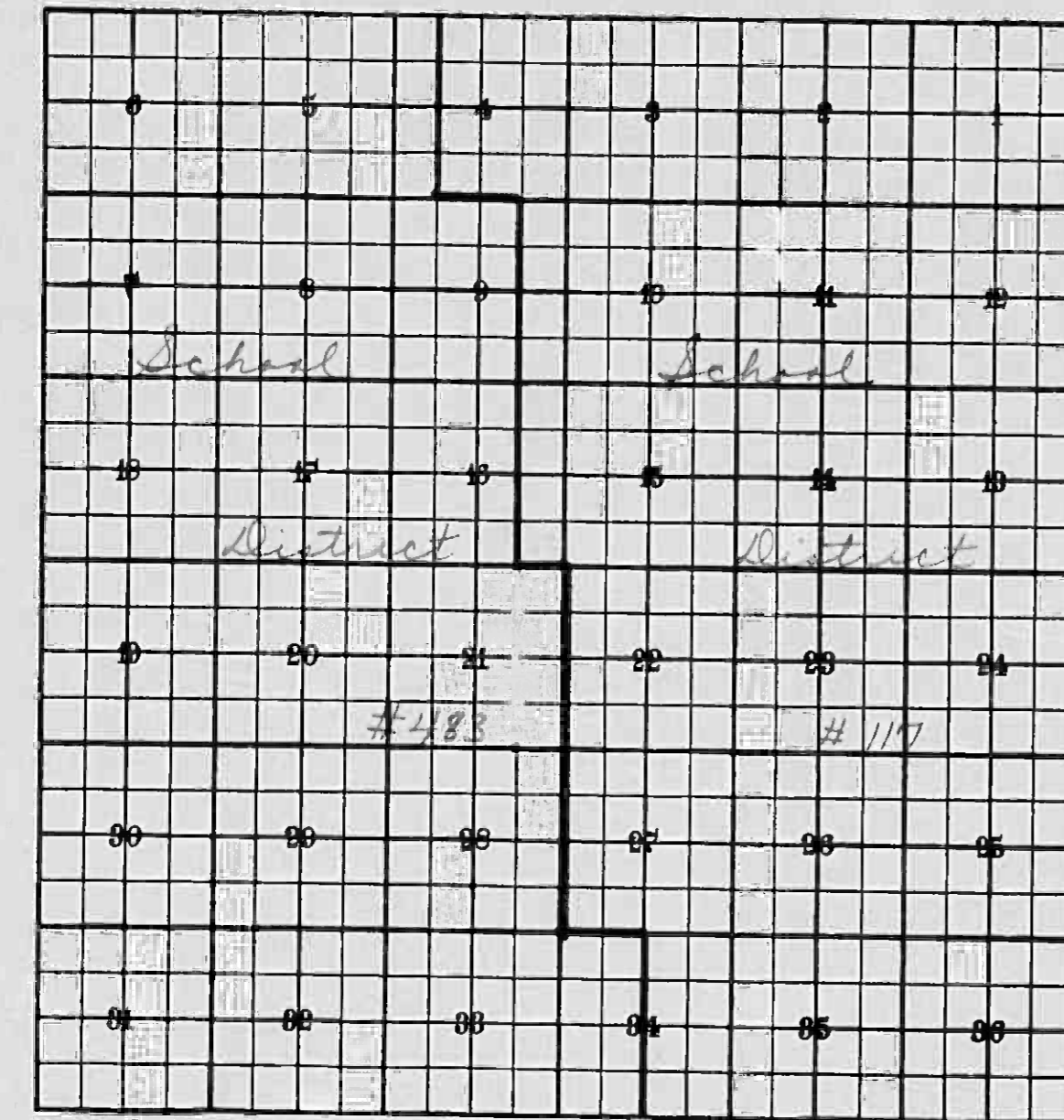
INDEX TO SECTIONS

SECTION PAGE

Sec. 1	
" 2	
" 3	
" 4	
" 5	
" 6	
" 7	
" 8	
" 9	
" 10	
" 11	
" 12	
" 13	
" 14	
" 15	
" 16	
" 17	
" 18	
" 19	
" 20	
" 21	
" 22	
" 23	
" 24	
" 25	
" 26	
" 27	
" 28	
" 29	
" 30	
" 31	
" 32	
" 33	
" 34	
" 35	
" 36	

For Convenience of Auditor in Showing Boundaries of School Districts

Township No. 136 Range No. 31 Mer. P. M.



#269 became #483
8-19-68

COLLECTIONS OF TAXES PAYABLE IN 1974, *Yearship* OF *Moose Lake* CASS COUNTY, MINNESOTA

FUNDS	MARCH SETTLEMENT 1974	JUNE SETTLEMENT 1974	NOV. SETTLEMENT 1974	Amount Collected from Nov. 1972 to First Monday in Jan. 1973	REDUCTIONS	Total Reductions and Collected	BALANCE UNCOLLECTED	ADDITIONS	Total Uncollected to First Monday in January, 1973
State-Non-Homestead, State-Homestead,									
County Revenue, County Road and Bridge, County Welfare, County Bond and Interest, Transportation P. E. R. A.	376 174 1662	19080 25045 53852	8769 11511 24764	1961 2496 5269					
Town Revenue, Town Road and Bridge, Bonds & Interest <i>Spec</i>	177 442 357	8964 22376 18224	4120 10284 9376	593 2230 136					
School Special, Deficiency Bonds & Interest Tuition P. E. R. A. <i>P. E. R. A. Trans. Unempl. Ins.</i>	540 272 1954 313 405 15	27991 8362 98798 9194 6036 369	12587 8560 47694 9984 2115 492	3192 303 7835 259 677					
	6109	288321	151196	26971					

	School District No.	LOCAL 1 MILL	SPECIAL	STATE LOAN	<i>Sparking</i>	<i>L.S.P.</i>	<i>C. C.</i>	<i>Trans.</i>	<i>Unempl. Ins.</i>	TOTALS
MARCH SETTLEMENT	4832		553		240	1131	286	33	15	1958
	1172		287		32	823	27	72		1241
	Totals		840		272	1954	313	105	15	3199
JUNE SETTLEMENT	1172		20588		2274	58970	1952	5092		88876
	117712		912		50	1307	43	112		2424
	4832		6279		5938	28048	7080	818	363	48526
	483712		212		100	473	119	14	06	924
Totals		27991		8362	88798	9194	6036	369		140750
NOVEMBER SETTLEMENT	483A		8512		8050	38023	9598	1107	492	65782
	617A		4075		450	11671	366	1008		17590
	Totals		12587		8500	49694	9984	2115	492	83372
NOVEMBER to JANUARY	1172		2279		252	6528	216	525		9840
	117712		913		57	1307	43	112		2426
	Totals		3192		303	7835	259	677		12266
ADDITIONS	School District No.									
Totals										
REDUCTIONS	School District No.									
Totals										

Real Estate

IN WHOSE NAME ASSESSED	DESCRIPTION OF PROPERTY					ASSESSED VALUE				SOLD FOR TAXES	VALUATIONS BY SCHOOL DISTRICTS AS EQUALIZED BY DEPARTMENT OF TAXATION						
	SUBDIVISION	Sec. or Lot	Town or Block	Rng.	No. of Acres	ESTIMATED MARKET VALUE	Total	Homestead Tax Credit	Agr.		Non Agr.	District No. 9117	District No. NR117	District No.	District No.	District No.	District No.
												Mills	Mills	Mills	Mills	Mills	Mills
10361 Richard & Alice Roubal	1	NE 1/4 of NE 1/4	10 136 31 40	117		7880	1576	1576	1576								
10361 Richard & Alice Roubal	2	NW 1/4 of NE 1/4	10 136 31 40	117	Y F	1335	267	267	267								
10361 Richard & Alice Roubal	3	SW 1/4 of NE 1/4	10 136 31 40	117	Y F	525	105	105	105								
10361 Richard & Alice Roubal	4	SE 1/4 of NE 1/4	10 136 31 40	117	Y F	495	99	99	99								
10361 Maurice E. & Hazel F. Davis	5	NE 1/4 of NW 1/4	10 136 31 40	117	Y F	1335	267	267	267								
10361 Maurice E. & Hazel F. Davis	6	NW 1/4 of NW 1/4	10 136 31 40	117	Y E	3500	700	700	700								
10361 State of Minnesota	7	SW 1/4 of NW 1/4	10 136 31	117	Y R	7716	1929	1929	1929								
10361 Maurice E. Sr. & Hazel F. Davis	8	SE 1/4 of NW 1/4 less SE 1/4	10 136 31 40	117	Y R	248	62	62	62								
10361 Maurice, Jr. & Dolores Davis	8.01	SE 1/4 of SE 1/4 of NW 1/4	10 136 31	117	Y R												
10361 State of Minnesota	9	Gov. Lot 2	10 136 31	117													
10361 State of Minnesota	10	NW 1/4 of SW 1/4	10 136 31	117													
10361 State of Minnesota	11	Gov. Lot 3	10 136 31	117													
10361 State of Minnesota	13	NE 1/4 of SE 1/4	10 136 31	117													
10361 State of Minnesota	14	NW 1/4 of SE 1/4	10 136 31	117													
10361 State of Minnesota	15	Gov. Lot 1	10 136 31	117													
10361 State of Minnesota	16	SE 1/4 of SE 1/4	10 136 31	117													

H 204
H 2810 H 1991 H 4801
3014 1191 5005

Non-Homestead General Tax Ex. Bonds	Homestead General Tax Ex. Bonds	45% Homestead Credit	Rate & Tax Bonds & Int. (Mills)	SPECIAL TAXES	SPECIAL TAXES	TOTAL TAXES	PAID	WHEN PAID	Number of Receipt	March Settlement 1974	June Settlement 1974	Penalty	November Settlement 1974	Penalty	Collections to First Monday in January 1975	Penalty	Delinquent on First Monday in January 1975	Total Delinquent Tax and Penalty	REMARKS	
																				\$ cts.
	12724	5726				6998	1	PAID IN FULL	MAY 31 1974										4722	
	2156	970				1186	2	PAID IN FULL	MAY 31 1974											
848						848	3	PAID IN FULL	MAY 31 1974											
800						800	4	PAID IN FULL	MAY 31 1974											
							5													
	12156	970				1186	6	PAID IN FULL	MAY 31 1974	10910										4719
	5652	2544				3108	7	PAID IN FULL	MAY 31 1974	10910										
							8													
	17184	7732				9452	9	2nd HALF PAID	NOV 25 1974	21060										4726
							10	1st HALF PAID	MAY 31 1974	12287										4723
	552	248				304	10	2nd HALF PAID	NOV 25 1974	21060										4723
							11	1st HALF PAID	MAY 31 1974	12287										
							12													
							13													
							14													
							15													
							16													
							17													
							18													
							19													
							20													

8117 1648 22688
NR117 17736
1648 40424 18190

4878

19004

23882

1973 Tax List of Real Property in the Township of Moose Lake

Cass County, Minnesota, for Taxes Payable in the Year 1974

IN WHOSE NAME ASSESSED	DESCRIPTION OF PROPERTY						ASSESSED VALUE					VALUATIONS BY SCHOOL DISTRICTS AS EQUALIZED BY DEPARTMENT OF TAXATION					
	SUBDIVISION	Sec. or Lot	Town or Block	Rang.	No. of Acres	No. School District	ESTIMATED MARKET VALUE Dollars	Total	Homestead Tax Credit	Agt.	Non Agr.	SOLD FOR TAXES	District No.	District No.	District No.	District No.	District No.
													No. Mills	No. Mills	No. Mills	No. Mills	No. Mills
19361 Barney & Alma McCoy 11	Gov. Lot 15	19	136	31	40	483							108.93				
19361 Donald M. & Juno Hanson 11(C.Line)	Gov. Lot 13	19	136	31	31	483	1320	264	264	264		Y	F	H	264		
19361 Donald M. & Juno Hanson 11(C.Line)	Gov. Lot 14	19	136	31	40	483	605	121		121		Y	F	H	121		
19361 Barney & Alma McCoy 12	Gov. Lot 16	19	136	31	40	483	735	147		147		Y	F	H	147		
							6895	1379	1379	1379		Y	F	H	1379	SOLD FOR TAXES	
19361 Alvin A. & Maurino G. McAllister 13	NE 1/4 of SE 1/4	19	136	31	40	483	245	49		49		Y	F	H	49		
19361 Alvin A. & Maurino G. McAllister 14	NW 1/4 of SE 1/4	19	136	31	40	483	445	89		89		Y	F	H	89		
19361 Alvin A. & Maurino G. McAllister 15	SW 1/4 of SE 1/4	19	136	31	40	483	260	52		52		Y	F	H	52		
19361 Alvin A. & Maurino G. McAllister 16	SE 1/4 of SE 1/4	19	136	31	40	483	445	89		89		Y	F	H	89		

	Non-Homestead General Tax Ex. Bonds	Homestead General Tax Ex. Bonds	45% Homestead Credit	Rate & Tax Bonds & Int. (Mills)	SPECIAL TAXES		TOTAL TAXES	PAID	WHEN PAID	Number of Receipt	March Settlement 1974	June Settlement 1974	Penalty	November Settlement 1974	Penalty	Collections to First Monday in January 1975	Delinquent on First Monday in January 1975	Penalty	Total Delinquent Tax and Penalty	
					SPECIAL TAXES	SPECIAL TAXES														
					\$ cts	\$ cts														\$ cts
1		2876	1294				1582										1582			4736
2	1318						1318		PAID IN FULL											4735
3	1602						1602		PAID IN FULL											"
4		15022	6760				8262										8262			4736
5																				
6	534						534		2nd HALF PAID											4765
7	970						970		1st HALF PAID											19973
8	566						566		1st HALF PAID				1920		1530					"
9	970						970		1st HALF PAID											"
10-20																				

H 547
H 1643
2190

8483 5960 17898 8054 15804

4440 1520

9344

IN WHOSE NAME ASSESSED	DESCRIPTION OF PROPERTY					ESTIMATED MARKET VALUE	ASSESSED VALUE				SOLD FOR TAXES	VALUATIONS BY SCHOOL DISTRICTS AS EQUALIZED BY DEPARTMENT OF TAXATION						Non-Homestead General Tax Rte. Bonds	Homestead General Tax Rte. Bonds	45% Homestead Credit	Rate & Tax Bonds & Int. (Mills) Co. Sch. Vill. Tot.	SPECIAL TAXES	SPECIAL TAXES	TOTAL TAXES	PAID	WHEN PAID	Number of Receipts	March Settlement 1974	June Settlement 1974	Penalty	November Settlement 1974	Penalty	Collections to First Monday in January 1975	Penalty	Delinquent on First Monday in January 1975	Total Delinquent Tax and Penalty	REMARKS	
	SUBDIVISION	Sec. or Lot	Town or Block	Rag.	No. of Acres		School District	Type of Property	Total	Homestead Tax Credit		Agr.	Non Agr.	District No. Mills	District No. Mills	District No. Mills	District No. Mills																					District No. Mills
									Dollars	Dollars		Dollars	Dollars	Dollars	Dollars	Dollars	Dollars																					Dollars
20361 State of Minnesota	1	NE 1/4 of NE 1/4	20	136	31	483																																
20361 State of Minnesota	2	NW 1/4 of NE 1/4	20	136	31	483																																
20361 State of Minnesota	3	SW 1/4 of NE 1/4	20	136	31	483																																
20361 State of Minnesota	4	SE 1/4 of NE 1/4	20	136	31	483																																
20361 State of Minnesota	5	NE 1/4 of NW 1/4	20	136	31	483																																
20361 State of Minnesota	6	NW 1/4 of NW 1/4	20	136	31	483																																
20361 Jack V. & Ruth E. Wells	7	SW 1/4 of NW 1/4	20	136	31	40	483	Y	F		530	106		106	SOLD FOR TAXES	H	106																					
20361 State of Minnesota	8	SE 1/4 of NW 1/4	20	136	31	483																																
20361 State of Minnesota	9	NE 1/4 of SW 1/4	20	136	31	483																																
20361 Jack V. & Ruth E. Wells	10	NW 1/4 of SW 1/4	20	136	31	40	483	Y	F		625	125	125	125	SOLD FOR TAXES	H	125																					
20361 Jack V. & Ruth E. Wells	11	SW 1/4 of SW 1/4	20	136	31	40	483	Y	F		250	50		50	SOLD FOR TAXES	H	50																					
20361 Jack V. & Ruth E. Wells	12	SE 1/4 of SW 1/4	20	136	31	40	483	Y	F		1025	205	205	205	SOLD FOR TAXES	H	205																					
20361 State of Minnesota	13	NE 1/4 of SE 1/4	20	136	31	483																																
20361 State of Minnesota	14	NW 1/4 of SE 1/4	20	136	31	483																																
20361 Jack V. & Ruth E. Wells	15	SW 1/4 of SE 1/4	20	136	31	40	483	Y	F		2395	479	479	479	SOLD FOR TAXES	H	479																					
20361 Jack V. & Ruth E. Wells	16	SE 1/4 of SE 1/4	20	136	31	40	483	Y	F		395	79		79	SOLD FOR TAXES	H	79																					
	20																																					

1154
1269
4737
750
825
4737
544
598
1228
1351
4737
2870
531
57
860
946
7406

H 235
H 809
1244

240 3220 1244 809 1044
H 235
H 809
H 235
H 809

1448 2558 8814 3966 7406

IN WHOSE NAME ASSESSED	DESCRIPTION OF PROPERTY					ESTIMATED MARKET VALUE	ASSESSED VALUE				SOLD FOR TAXES	VALUATIONS BY SCHOOL DISTRICTS AS EQUALIZED BY DEPARTMENT OF TAXATION						Non-Homestead General Tax Rate Bonds	Homestead General Tax Rate Bonds	45% Homestead Credit	Rate & Tax Bonds & Int. (Mills)	SPECIAL TAXES	SPECIAL TAXES	TOTAL TAXES	PAID	WHEN PAID	Number of Receipts	March Settlement 1974	June Settlement 1974	Penalty	November Settlement 1974	Penalty	Collection in First Monday in January 1975	Penalty	Delinquent in First Monday in January 1975	Total Delinquent Tax and Penalty	REMARKS					
	SUBDIVISION	Sec. or Lot	Town or Block	Map	No. of Acres		Total	Homestead Tax Credit	Agr.	Non Agr.		District No. 2783 Mills 108.93	District No. Mills	District No. Mills	District No. Mills	District No. Mills	District No. Mills																									
21361 Volney & Margaret Olson	1	NE 1/4 of NE 1/4	21	136	31	40	483			118					118																											
21361 State of Minnesota	2	NW 1/4 of NE 1/4	21	136	31		483																																			
21361 State of Minnesota	3	SW 1/4 of NE 1/4	21	136	31		483																																			
21361 State of Minnesota	4	SE 1/4 of NE 1/4	21	136	31		483																																			
21361 State of Minnesota	5																																									
21361 State of Minnesota	6	NE 1/4 of NW 1/4	21	136	31		483																																			
21361 State of Minnesota	7	NW 1/4 of NW 1/4	21	136	31		483																																			
21361 State of Minnesota	8	SW 1/4 of NW 1/4	21	136	31		483																																			
21361 State of Minnesota	9	SE 1/4 of NW 1/4	21	136	31		483																																			
21361 State of Minnesota	10																																									
21361 State of Minnesota	11	NE 1/4 of SW 1/4	21	136	31		483																																			
21361 State of Minnesota	12	NW 1/4 of SW 1/4	21	136	31		483																																			
21361 State of Minnesota	13	SW 1/4 of SW 1/4 less 1 Acre	21	136	31		483																																			
21361 State of Minnesota	14	SE 1/4 of SW 1/4	21	136	31		483																																			
21361 State of Minnesota	15																																									
21361 State of Minnesota	16	NE 1/4 of SE 1/4	21	136	31		483																																			
21361 State of Minnesota	17	NW 1/4 of SE 1/4	21	136	31		483																																			
21361 State of Minnesota	18	SW 1/4 of SE 1/4	21	136	31		483																																			
21361 State of Minnesota	19	SE 1/4 of SE 1/4	21	136	31		483																																			
21361 State of Minnesota	20																																									

2nd HALF PAID OCT 31 1974
1st HALF PAID MAR 4 1974

20797
775

4730

40 590 118 118 # 118

948 1286

1286

643

643

Table with columns: IN WHOSE NAME ADDRESSED, DESCRIPTION OF PROPERTY, ASSESSED VALUE, VALUATIONS BY SCHOOL DISTRICTS, TAXES, PAID, WHEN PAID, and REMARKS. Includes entries for State of Minnesota and Charles C. Christian.

1973 Tax List of Real Property in the Township of Moose Lake

Cass County, Minnesota, for Taxes Payable in the Year 1974.

FORM 86 MILLS-DAY, CO. MINNAPOLIS

Main tax list table with columns: IN WHOSE NAME ASSSESSED, DESCRIPTION OF PROPERTY, ASSESSED VALUE, VALUATIONS BY SCHOOL DISTRICTS AS EQUALIZED BY DEPARTMENT OF TAXATION, and various tax payment and delinquency columns.

384

10530 3254 2358 3254

H 2358 976 3254

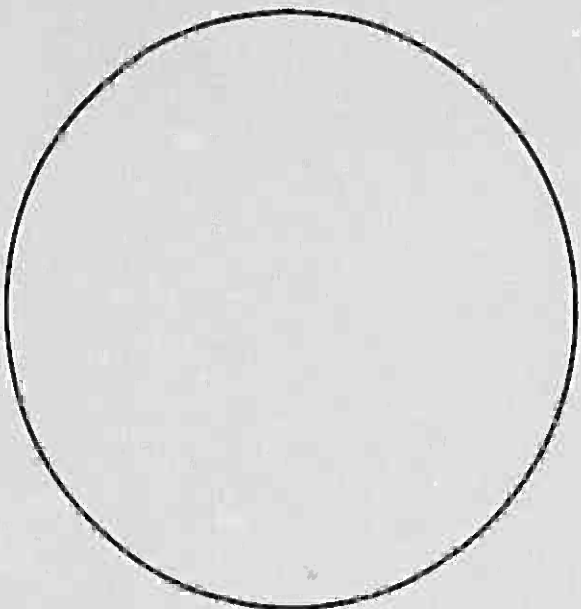
R483 7762 25688 11560

23890

11656

12234

IMAGE EVALUATION TEST TARGET (QA-2)



150mm

6"

POINT SIZE

4 739g iat 1046 Zho6
 6 Hq47j W9pa9 A7o7q Cc92
 8 Sulxi 33q7n Oelvf 4ef8k

10 2xbiy Gmn0c
 Y5a5o E1t9g

12 7n34a K2b8t
 D6fmh 9ss9d

14 Wcuzl L1cdg
 6Y3sl Okjdg

FUTURA

NEWS GOTHIC

14 K2b8t Okjdg
 4ef8k Gmn0c

12 Zlo6x Ge92
 7n34a 6Y3sl

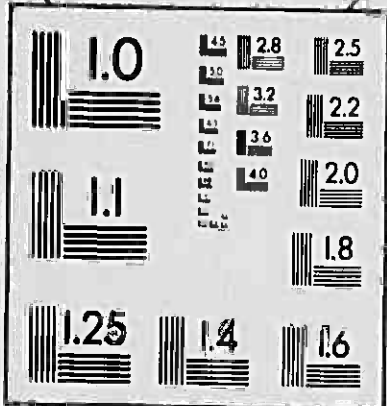
10 Y0r8j A7o7q
 Oelvf 2xbiy

8 9ss9d L1cdg
 33q7n E1t9g

6 235lg Hq47j Sulxi Y5a5

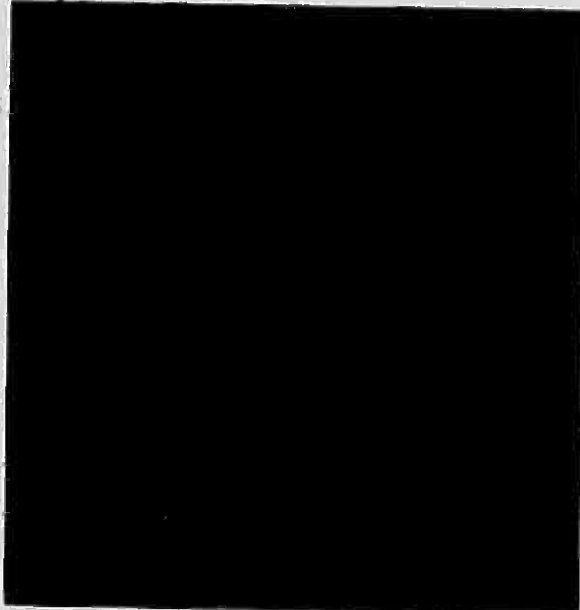
4 D6fmh Wcuzl L1cdg

POINT SIZE



4 CERN NZALUS B100 ZLUCD ZC88
 6 IZC68 USM7P P6658 01K0G
 8 XMBBO HWEKH XYAHQ SIDDS
 10 VILNU MZHSF XMBBO HWEKH
 KP7Yc Rho9t Umkh9 Ecafd
 C6Jfm Zm79a 3st3l iskrY I26FRKM EB7AU FUDWM BOONF
 Oz7h9B5e1P Wo8nk 8tizx I4C9E83 B18AJ Z7QYI OKJDQ

SERIF (BASKERVILLE) POINT SIZE SANS SERIF (MICROFONT)



APPLIED IMAGE, Inc
 1653 East Main Street
 Rochester, NY 14609 USA
 Phone: 716/482-0300
 Fax: 716/288-5989