

ASSESSMENT & TAX LIST - 1962
May

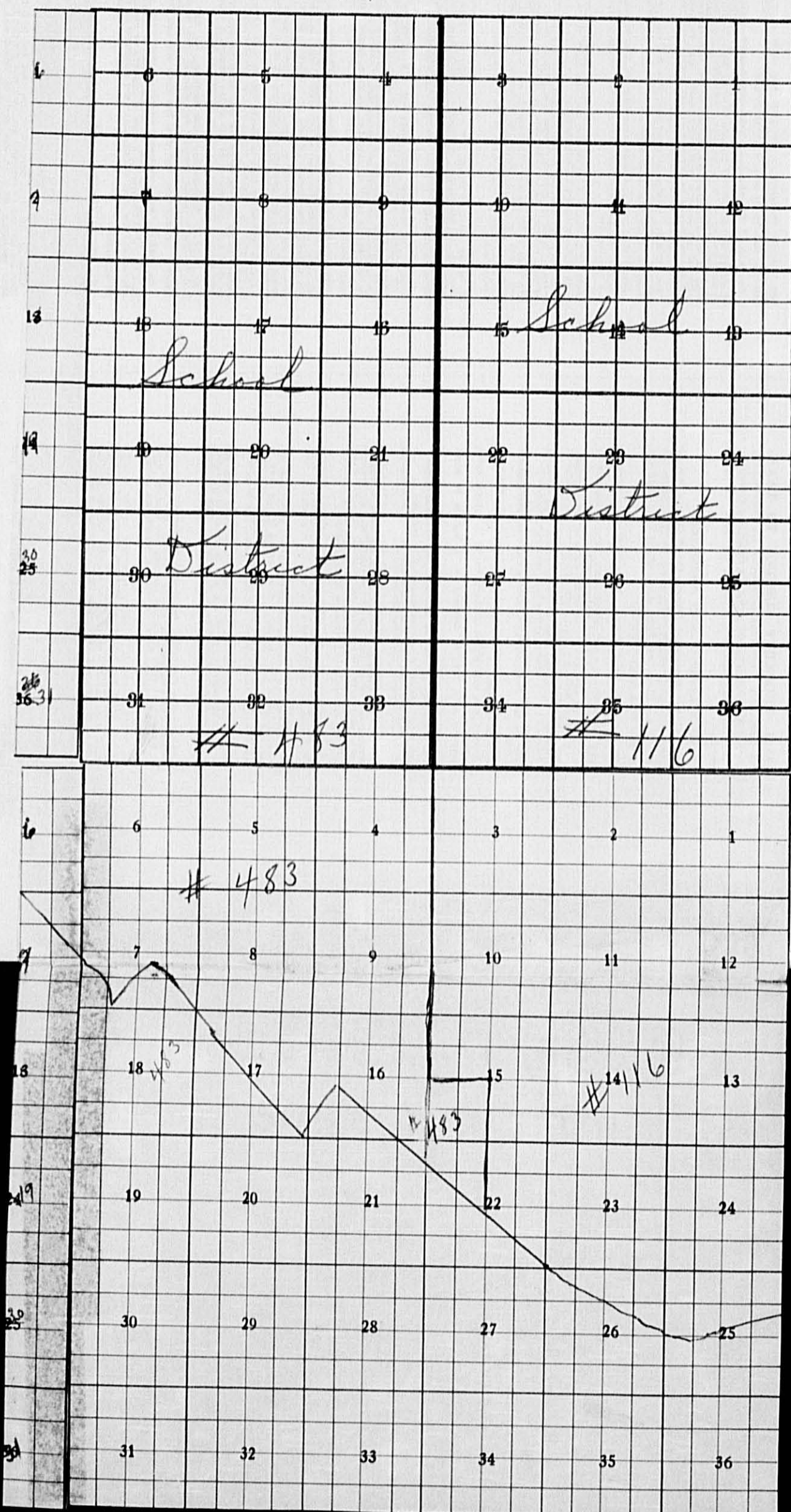
INDEX TO SECTIONS

SECTION PAGE

Sec. 1	
" 2	
" 3	
" 4	
" 5	
" 6	
" 7	
" 8	
" 9	
" 10	
" 11	
" 12	
" 13	
" 14	
" 15	
" 16	
" 17	
" 18	
" 19	
" 20	
" 21	
" 22	
" 23	
" 24	
" 25	
" 26	
" 27	
" 28	
" 29	
" 30	
" 31	
" 32	
" 33	
" 34	
" 35	
" 36	

For Convenience of Auditor in Showing Boundaries of School Districts

Township No. *Part of 133* Range No. *31* Mer. P. M.
 " " *134*



Returns Showing Grain Received in or Handled by Elevators, Warehouses and Mills in the _____ of _____ in the County of _____ for the Year Ending May 1, 1962.

NAMES OF OWNERS	ADDRESS	SUBDIVISION 1			Total Subdivision 1 No. Bushels	★ Tax of 1/4 Mill per Bushel Dollars Cts.	SUBDIVISION 2						Total Subdivision 2 No. Bushels	★ Tax of 1/4 Mill Per Bushel Dollars Cts.	★ Total Tax Dollars Cts.	REMARKS
		Bushels of Wheat	Bushels of Soy Beans	Bushels of Flax			Bushels of Corn	Bushels of Barley	Bushels of Rye	Bushels of Oats	Bushels of Buckwheat	Bushels of Other Grains				

Note ★ Assessors will not fill these Columns

Real Estate

SUMMARY OF TAX COLLECTION

Original Levy	- - - - -	\$ 29,652.56	
Additions	- - - - -	\$ _____	
			\$ _____
Abatements	- - - - -	\$ 214.76	
			\$ 29,437.80

COLLECTIONS

March Settlement	- - - - -	\$ 6,564.56	
June Settlement	- - - - -	\$ 11,135.75	
November Settlement	- - - - -	\$ 9,209.80	
January Settlement	- - - - -	\$ 573.54	\$ 27,483.65
			\$ _____
Over Collected	- - - - -	\$ 797.2	
Under Collected	- - - - -	\$.02	
Delinquent	- - - - -	\$ 4033.85	\$ _____
Total	- - - - -		\$ 29,437.80

Real Estate

Personal

TABULAR SCHEDULE OF VALUATIONS, LEVIED IN THE Township of May OF

School District No.	VALUATION BY SCHOOL DISTRICTS				RATE OF STATE TAXES	RATE OF COUNTY TAXES									RATE OF TOWN TAXES											RATE OF SCHOOL TAXES							
	Agri-cultural Lands	Non-Agri-cultural Lands	Personal Property	Total Value of all Property except Money and Credits	Total Rate of State Tax	Rev.	R. & B.	Wel-fare	Welf. - Bonds and Int. Def.	Co. P.M.	Total Rate of County Tax	Rev.	R. & B.	State Loan	Em. Fire Rd.	Total Rate of Town Tax	Local	Special	State Loan	Defi-ciency	Tui-tion	Trans-portion	C.O.	PERA	Bd. of	Total Rate of Sch'l Tax	Total Rate of all Taxes						
116	35,209		na	51,322	11.831	32.07	20.	49.74	13.67	5.79	91	125.51	5.	25.	1.	5.	36.	25.		60.24						1.98	125.4	295.22					
483	38,443	559	na	57,510																													
	73,652	559		108,832																													

Assessed Value	Rural	All Other	Personal Property	Total
Homestead	49803			49803
Non-Homestead	24,408		34,621	59,029
Total	74,211		34,621	108,832

C2 255
Other 34366
34621

N.H. 8.54
16.85

C.H. Bldg.
Civil Defense
Agric Assn.
Transp.
2.
.37
.5
.96

P.D. including State rate 116
NA
483
Class rate # 483

286.91
311.91
234.39
257.39
16151

County: C.H. Bldg 21766
Civil Defense 4026
Agric Assn. 5442
Transp. 10448
13,6679

RATES AND TAXES COUNTY OF CASS, STATE OF MINNESOTA

TAXES LEVIED																																																			
LOCAL 1 MILL AND SPECIAL SCHOOL TAXES BY DISTRICTS													ALL OTHER TAXES																																						
Local 1 Mill	Special	State Loan	Def.	C.O.	PERA	Bd. of	T.D.E.A.	Total School Taxes	FUNDS	Rate	Amounts																																								
25.	50.	25.	50.	8.56	3.26	25.96		1.98	309164	43932	18784	133232	10162	643594	State - Non-Homestead,																																				
30.	30.1			4.31	1.85	11.62		1.98	165688	23725	10184	63963	4011.75	748783	State - Homestead,																																				
36.				4.31	1.85	11.62		1.98	11335	6824	419	2634	22189	277270	County Revenue,																																				
																County Road and Bridge,																																			

Total Levy, \$ 29,652.56

Total Number of Acres 33,645.80

State of Minnesota,)
COUNTY OF CASS)
ss. W. C. Peterson, Auditor of said County and State aforesaid, do hereby certify that the foregoing is a true and correct Schedule, showing the valuation of all the taxable property, in the Town of May, in said County, the several rates of Taxation and Totals of the several Tax Funds levied thereon for the year A. D. 196-2.

Witness my hand and official seal, this 17 day of January A. D. 196-3.

By W. C. Peterson, County Auditor.
By Helena Bilken, Deputy

29652.56
Total Taxes Real Estate 20,084.26
Pers. Prop. 9568.30
Total 29,652.56

Real Estate

Personal

COLLECTIONS OF TAXES OF 1962

Law of May

CASS COUNTY, MINNESOTA

FUNDS	MARCH SETTLEMENT 1963	JUNE SETTLEMENT 1963	NOV. SETTLEMENT 1963	Amount Collected from Nov. 1962 to First Monday in Jan. 1963	REDUCTIONS	Total Reductions and Collected	BALANCE UNCOLLECTED	ADDITIONS	Total Uncollected to First Monday in January, 1963
State-Non-Homestead,	196 73	107 64	133 77	13 47					
State-Homestead,	194 16	339 75	277 24	17 45					
County Revenue,	765 17	1310 88	1082 99	682 7					
County Road and Bridge,	477 19	819 51	675 39	42 58					
County Welfare,	1186 76	2033 15	1679 70	105 89					
County Bond and Interest,	326 16	558 77	461 64	29 10					
PERA	126 22	216 23	178 65	11 26					
Co. Nurse	21 71	37 20	30 74	1 74					
C. N. Bedg	47 72	81 75	67 54	4 26					
Town Revenue,	119 30	204 38	168 85	10 65					
Town Road and Bridge,	596 48	1021 89	844 24	53 23					
Town State Loan,									
Fire	23 85	40 88	33 77	2 14					
Em Rd	119 30	204 38	168 85	10 65					
School Local 1 Mill,									
School Special,	594 83	1033 44	846 58	72 66					
School State Loan,									
Deficiency	1052 20	1854 31	1522 15	77 95					
Tuition	149 92	264 86	216 86	11 13					
Transportation	64 89	113 39	92 83	4 76					
C. O.	436 70	774 22	633 00	313 4					
PERA									
B. J.	22 32	41 32	33 22	9 1					
Sec 3-7064									
Civ. Def.	8 83	15 12	12 49	7 9					
Agri. Assn	11 92	20 44	16 88	10 7					
Transp.	22 90	39 24	32 42	20 4					
Totals	6564 56	1135 75	9209 80	573 54					

	School District No.	LOCAL 1 MILL	SPECIAL	STATE LOAN	Deficiency	C. O.	PERA	B. J.	Sec 3-7064	TOTALS
MARCH SETTLEMENT	116 a		281 75		678 89	96 47	41 25	292 56	22 31	1412 43
	116 na		31		36	05	02	16	01	91
	483 a		306 74		369 33	52 88	22 70	142 58		894 23
	483 na		6 03		36 2	52	22	140		11 79
Totals			594 83		1052 20	149 92	64 19	436 70	22 32	3393 6
JUNE SETTLEMENT	116 a		521 70		1257 08	178 63	76 38	541 73	41 32	2616 84
	483 a		488 65		588 33	84 24	36 16	227 12		1424 50
	483 na		23 09		13 90	1 99	85	5 37		45 20
	Totals		1033 44		1859 31	264 86	113 39	774 22	41 32	4086 54
NOVEMBER SETTLEMENT	116 a		419 45		1010 70	143 62	61 40	435 55	33 22	2103 94
	483 a		422 46		508 65	72 84	31 26	196 36		1231 57
	483 na		4 67		2 80	40	17	1 09		9 13
	Totals		846 58		1522 15	216 86	92 83	633 00	33 22	3344 64
NOVEMBER to JANUARY	116 a		1150		2771	374	168	1194	91	5768
	483 a		222 8		2683	374	165	1036		6496
	483 na		38 88		23 41	335	143	904		76 11
	Totals		726 6		7795	1113	476	3134	91	19875
ADDITIONS										
REDUCTIONS										

Real Estate

Personal

Assessor's Return of Exempt Real Property in the _____ of _____ County of _____, Minnesota, for the Year 1962

FORM 2 MILLER-DAVIS CO., MINNEAPOLIS

NAMES OF OWNERS	DESCRIPTION					FOR WHAT PURPOSE USED	TRUE AND FULL VALUATIONS				ASSESSED VALUATIONS		REMARKS
	SUBDIVISION	Sec. or Lot	Town or Block	Range	No of Acres		LAND Exclusive of Structures and Improvements Dollars	BUILDINGS and Other Structures Dollars	MACHINERY Permanently Attached to Real Estate Dollars	TOTAL True and Full Value Dollars	ASSESSED VALUATIONS		
											Rural Including Machinery 33 1/3%	All Other 40%	
Casino Assembly of God Church Township of May	1 Square acre in the Southeast corner of SE 1/4 / SE 1/4	11	134	31	1		60	3000	3060	1020		Church and parsonage	
Joint Ind. Cons. School District Number 29. State of Minnesota	W 12.65 rods of the South 25.3 rods of SE 1/4 / SE 1/4	21	134	31	2		31	1700	1731	577		Town hall	
	S 1/2 of NE 1/4	35	134	31	80			450	450	150		School forest	
	50000 in SW 1/4 NW 1/4	4	133	31	50		100	1250	1350	450		fire tower and station	

31
134 - 31
Personal

Assessment Roll and Tax List of Real Property in the Town of May, Cass County, Minnesota, for Taxes for the Year 1962.

SCD MILLER-DAVIS CO., MINNEAPOLIS

* Indicate Type of Property: R-Residential, C-Commercial, I-Industrial, U-Utility, F-Farm, L-Lakeshore, T-Timber, M-Mineral

Cass County, Minnesota, for Taxes for the Year 1962.

133 - 31

IN WHOSE NAME ASSESSED	DESCRIPTION OF PROPERTY				No. School District	Indicate Homestead Yes or No	Agricultural or Recreational Yes or No	Indicate Type of Property	TRUE AND FULL VALUATIONS				ASSESSED VALUATIONS							FINAL EQUALIZED VALUE		
	SUBDIVISION	Sec. or Lot	Town or Block	Rtg. Acres of Land					LAND Exclusive of Structures and Improvements	BUILDINGS and Other Structures	MACHINERY Permanently Attached to Real Estate	TOTAL True and Full Value	RURAL		ALL OTHER			MACHINERY Permanently Attached to Real Estate	Seasonal and Recreational Cabins		TOTAL ASSESSED VALUE	Total Assessed Value as Equalized by the Board of Review
													Homestead Up to \$4,000 20%	Over \$4,000 and Non-Homestead 33 1/3%	Timber Land Class 3e 20%	Homestead Up to \$4,000 25%	Over \$4,000 and Non-Homestead 40%					
George W. & Ruth E. Hip	1		133 31	40	#16			T	160				160	32			32					
State of Minnesota	2																					
State of Minnesota	3																					
State of Minnesota	4																					
Ernest Bohrer	6							T	297				297	99			99					
Effie Tallis & Alice Isaacson	7			40				T	160				160	32			32					
State of Minnesota	8																					
State of Minnesota	9																					
State of Minnesota	10																					
State of Minnesota	11																					
State of Minnesota	12																					
Leonard & Jane Nygren	13			40				T	159				159	53			53					
Willis F. & Flossie Mann	14			40				T	180				180	60			60					
State of Minnesota	15																					
State of Minnesota	16																					
State of Minnesota	17																					
Calvin & Margaret Oliphant	18			40				F	132				132	44			44					
" " "	19			40				F	99				99	33			33					
	20			240					1187				1187	64			890					

SOLD FOR TAXES	VALUATIONS BY SCHOOL DISTRICTS AS EQUALIZED BY DEPARTMENT OF TAXATION						Tax Including State Homestead	State Tax on Non-Homestead	SPECIAL TAXES	SPECIAL TAXES	TOTAL TAXES	PAID	WHEN PAID	Number of Receipt	March Settlement 1963	June Settlement 1963	Penalty	November Settlement 1963	Penalty	Collections to First Monday in January 1964	Penalty	Delinquent on First Monday in January 1964	Total Delinquent Tax and Penalty	REMARKS
	District No.	District No.	District No.	District No.	District No.	District No.																		
	Rate	Rate	Rate	Rate	Rate	Rate																		
1																								
2																								
3																								
4																								
5																								
6																								
7																								
8																								
9																								
10																								
11																								
12																								
13																								
14																								
15																								
16																								
17																								
18	SOLD FOR TAXES																							
19	SOLD FOR TAXES																							
20																								

134 - 31

Personal

Assessment Roll and Tax List of Real Property in the Town of Map, Cass County, Minnesota, for Taxes for the Year 1962.

Form 500 MILLER-DAVIS CO., MINNEAPOLIS

* Indicate Type of Property: R-Residential, C-Commercial, I-Industrial, U-Utility, F-Farm, L-Lakeshore, T-Timber, M-Mineral

Table with columns: IN WHOSE NAME ASSESSED, DESCRIPTION OF PROPERTY, TRUE AND FULL VALUATIONS, ASSESSED VALUATIONS, and FINAL EQUALIZED VALUE.

Table with columns: VALUATIONS BY SCHOOL DISTRICTS AS EQUALIZED BY DEPARTMENT OF TAXATION, TAXES, PAID, WHEN PAID, and REMARKS.

133-31

Personal

Assessment Roll and Tax List of Real Property in the Town of Mary, Cass County, Minnesota, for Taxes for the Year 1962.

Form 500 MILLER-DAVIS CO., MINNEAPOLIS

* Indicate Type of Property: R-Residential, C-Commercial, I-Industrial, U-Utility, F-Farm, L-Lakeshore, T-Timber, M-Mineral

Table with columns: IN WHOSE NAME ASSESSED, DESCRIPTION OF PROPERTY, TRUE AND FULL VALUATIONS, ASSESSED VALUATIONS, and FINAL EQUALIZED VALUE.

Cass County, Minnesota, for Taxes for the Year 1962.

Table with columns: VALUATIONS BY SCHOOL DISTRICTS AS EQUALIZED BY DEPARTMENT OF TAXATION, TAXES, PAID, WHEN PAID, and REMARKS.

Assessment Roll and Tax List of Real Property in the Town of May, Minnesota

Cass County, Minnesota, for Taxes for the Year 1962.

Form SCD MILLER-DAVIS CO., MINNEAPOLIS

Table with columns: IN WHOSE NAME ASSESSED, DESCRIPTION OF PROPERTY, TRUE AND FULL VALUATIONS, ASSESSED VALUATIONS, VALUATIONS BY SCHOOL DISTRICTS AS EQUALIZED BY DEPARTMENT OF TAXATION, TAXES, PAID, WHEN PAID, Number of Receipt, March Settlement, June Settlement, November Settlement, Collections to First Monday in January, Delinquent on First Monday in January, Total Delinquent Tax and Penalty, REMARKS.

131 - 31

Personal

Assessment Roll and Tax List of Real Property in the Town of May, Minnesota

Cass County, Minnesota, for Taxes for the Year 1962.

Form 500 - MILLER-DAVIS CO., MINNEAPOLIS

Table with columns for Property Description, Valuations (True and Full, Assessed), School Districts, Taxes (SOLD FOR TAXES, VALUATIONS BY SCHOOL DISTRICTS), and Payment Status (PAID, WHEN PAID, etc.).

134 - 31

Personal

Assessment Roll and Tax List of Real Property in the Town of May, Minnesota

Cass County, Minnesota, for Taxes for the Year 1962.

Form SCD - MILLER-DAVIS CO., MINNEAPOLIS

* Indicate Type of Property: R-Residential, C-Commercial, I-Industrial, U-Utility, F-Farm, L-Lakeshore, T-Timber, M-Mineral

Table with columns: IN WHOSE NAME ASSESSED, DESCRIPTION OF PROPERTY, TRUE AND FULL VALUATIONS, ASSESSED VALUATIONS, VALUATIONS BY SCHOOL DISTRICTS AS EQUALIZED BY DEPARTMENT OF TAXATION, TAXES, PAID, WHEN PAID, Number of Receipt, March Settlement 1963, June Settlement 1963, November Settlement 1963, Collections to First Monday in January 1964, Delinquent on First Monday in January 1964, Total Delinquent Tax and Penalty, REMARKS.

(cont. Next Page)

131 - 31

Personal

Assessment Roll and Tax List of Real Property in the Town of May, Minnesota

Cass County, Minnesota, for Taxes for the Year 1962.

Form 500 - MILLER-DAVIS CO., MINNEAPOLIS

* Indicate Type of Property: R-Residential, C-Commercial, I-Industrial, U-Utility, F-Farm, L-Lakeshore, T-Timber, M-Mineral

Main table with columns: IN WHOSE NAME ASSESSED, DESCRIPTION OF PROPERTY, TRUE AND FULL VALUATIONS, ASSESSED VALUATIONS, VALUATIONS BY SCHOOL DISTRICTS AS EQUALIZED BY DEPARTMENT OF TAXATION, TAX, PAID, WHEN PAID, etc.

(Cont. Next Page)

131 - 31

Personal

Assessment Roll and Tax List of Real Property in the Town of May, Minnesota

Cass County, Minnesota, for Taxes for the Year 1962.

Form 5CD MILLER-DAVIS CO., MINNEAPOLIS

* Indicate Type of Property: R-Residential, C-Commercial, I-Industrial, U-Utility, F-Farm, L-Lakeshore, T-Timber, M-Mineral

Table with columns: IN WHOSE NAME ASSESSED, DESCRIPTION OF PROPERTY, TRUE AND FULL VALUATIONS, ASSESSED VALUATIONS, VALUATIONS BY SCHOOL DISTRICTS AS EQUALIZED BY DEPARTMENT OF TAXATION, TAX INCLUDING STATE HOMESTEAD, SPECIAL TAXES, TOTAL TAXES, PAID, WHEN PAID, Number of Receipt, March Settlement, June Settlement, November Settlement, Collections to First Monday in January, Delinquent on First Monday in January, Total Delinquent Tax and Penalty, REMARKS.

Assessment Roll and Tax List of Real Property in the Town of Maple, Minnesota

Form 500 MILLER-DAVIS CO., MINNEAPOLIS

Cass County, Minnesota, for Taxes for the Year 1962.

Table with columns: IN WHOSE NAME ASSESSED, DESCRIPTION OF PROPERTY, TRUE AND FULL VALUATIONS, ASSESSED VALUATIONS, VALUATIONS BY SCHOOL DISTRICTS AS EQUALIZED BY DEPARTMENT OF TAXATION, TAXES, PAID, WHEN PAID, Number of Receipt, March Settlement, June Settlement, November Settlement, Collections to First Monday in January 1964, Delinquent on First Monday in January 1964, Total Delinquent Tax and Penalty, REMARKS.

Assessment Roll and Tax List of Real Property in the Town of Maple, Cass County, Minnesota, for Taxes for the Year 1962.

Form SCD MILLER-DAVIS CO., MINNEAPOLIS

Table with columns: IN WHOSE NAME ASSESSED, DESCRIPTION OF PROPERTY, TRUE AND FULL VALUATIONS, ASSESSED VALUATIONS, VALUATIONS BY SCHOOL DISTRICTS AS EQUALIZED BY DEPARTMENT OF TAXATION, TAXES, PAID, WHEN PAID, Number of Receipt, March Settlement, June Settlement, November Settlement, Collections to First Monday in January 1964, Delinquent on First Monday in January 1964, Total Delinquent Tax and Penalty, REMARKS.

134 - 31

Personal

Assessment Roll and Tax List of Real Property in the Town of Maple

Form SCD MILLER-DAVIS CO., MINNEAPOLIS

* Indicate Type of Property: R-Residential, C-Commercial, I-Industrial, U-Utility, F-Farm, L-Lakeshore, T-Timber, M-Mineral

IN WHOSE NAME ASSESSED	DESCRIPTION OF PROPERTY				No. School District	Indicate Homestead Yes or No	Agricultural Use Yes or No	Indicate Type of Property	TRUE AND FULL VALUATIONS				ASSESSED VALUATIONS							FINAL EQUALIZED VALUE		
	SUBDIVISION	Sec. or Lot	Town or Block	Rng. Acres of Land					LAND Exclusive of Structures and Improvements	BUILDINGS and Other Structures	MACHINERY Permanently Attached to Real Estate	TOTAL True and Full Value	RURAL		ALL OTHER			MACHINERY Permanently Attached to Real Estate	Seasonal and Recreational Cabins		TOTAL ASSESSED VALUE	Total Assessed Value as Equalized by the Board of Review
													Homestead Up to \$4,000 20%	Over \$4,000 and Non-Homestead 33 1/3%	Timber Land Class 3e 20%	Homestead Up to \$4,000 25%	Over \$4,000 and Non-Homestead 40%					
Franklin A. & Ethel V. Holm			10 133 31	40	116	Y	F	200				200	40			40						
"				40		Y	F	340				340	68			68						
"				40		Y	F	330	680			1010	242			202						
"				40		Y	T	140				140	28			28						
"				40		Y	T	200				200	40			40						
"				40		Y	T	200				200	40			40						
Kenneth G. & Beulah Johnson				40		Y	F	300				300	60			60						
"				40		Y	F	210				210	42			42						
"				40		Y	F	275	650			925	185			185						
"				40		Y	F	365				365	73			73						
"				40		Y	F	320				320	64			64						
"				40		Y	F	165				165	33			33						
Bert A. & Delfine Quine				40		Y	F	120				120	24			24						
Franklin A. & Ethel V. Holm				40		Y	F	205				205	41			41						
"				40		Y	F	310				310	62			62						
Bert A. & Delfine Quine				40		Y	F	530				530	106			106						
				640				4210	1330			5540	1108			1108						

Cass County, Minnesota, for Taxes for the Year 1962.

SOLD FOR TAXES	VALUATIONS BY SCHOOL DISTRICTS AS EQUALIZED BY DEPARTMENT OF TAXATION						Tax including State Homestead	State Tax on Non-Homestead	SPECIAL TAXES	SPECIAL TAXES	TOTAL TAXES	PAID	WHEN PAID	Number of Receipt	March Settlement 1963	June Settlement 1963	November Settlement 1963	Penalty	Collections to First Monday in January 1964	Penalty	Delinquent on First Monday in January 1964	Total Delinquent Tax and Penalty	REMARKS
	District No.	District No.	District No.	District No.	District No.	District No.																	
	Rate	Rate	Rate	Rate	Rate	Rate																	
1			H 40				1180			1180		1 PAID IN FULL	OCT 3 1 1963										
2			H 68				2008			2008		2 PAID IN FULL	OCT 3 1 1963	19795									18612
3			H 202				5964			5964		3 PAID IN FULL	OCT 3 1 1963										
4			H 28				826			826		4 PAID IN FULL	OCT 3 1 1963										
5																							
6			H 40				1180			1180		6 PAID IN FULL	OCT 3 1 1963	19798									18638
7			H 40				1180			1180		7 PAID IN FULL	OCT 3 1 1963										
8	SOLD FOR TAXES		H 60				1772			1772													19759
9	SOLD FOR TAXES		H 42				1240			1240													1040
10																							
11	SOLD FOR TAXES		H 185				5462			5462													5462
12	SOLD FOR TAXES		H 73				2156			2156													2156
13	SOLD FOR TAXES		H 64				1890			1890													1890
14	SOLD FOR TAXES		H 33				974			974													974
15																							
16			H 24				708			708		16 PAID IN FULL	MAY 3 1 1963	13388									708
17			H 41				1210			1210													1210
18			H 62				1830			1830		18 PAID IN FULL	OCT 3 1 1963	19795									1830
19			H 106				3130			3130		19 PAID IN FULL	MAY 3 1 1963	13388									3130
20			H 1108				32710			32710													32710

131 - 31

Personal

Assessment Roll and Tax List of Real Property in the Town of May,

Cass County, Minnesota, for Taxes for the Year 1962.

IN WHOSE NAME ASSESSED	DESCRIPTION OF PROPERTY				No. School District	Indicate Homestead Yes or No	Agricultural or Recreational Yes or No	Indicate Type of Property	TRUE AND FULL VALUATIONS					ASSESSED VALUATIONS							FINAL EQUALIZED VALUE		
	SUBDIVISION	Sec. or Lot	Town or Block	Rng.					Number of Acres of Land	LAND Exclusive of Structures and Improvements	BUILDINGS and Other Structures	MACHINERY Permanently Attached to Real Estate	TOTAL True and Full Value	RURAL		ALL OTHER						TOTAL ASSESSED VALUE	Total Assessed Value as Equalized by the Board of Review
														Acres 100ths	Homestead Up to \$4,000 20%	Over \$4,000 and Non-Homestead 33 1/3%	Timber Land Class 3e 20%	Homestead Up to \$4,000 25%	Over \$4,000 and Non-Homestead 40%	MACHINERY Permanently Attached to Real Estate 33 1/3%			
Leonard + Jane Nygren	NE 1/4 of NE 1/4	11	133	31	40			F	240								80		80				
Jessie C. + Rose E. Lobb	NW 1/4 of NE 1/4				40			F	200					40					40				
" " "	SW 1/4 of NE 1/4				40			F	240					48					48				
Leonard + Jane Nygren	SE 1/4 of NE 1/4				40			F	330					110					110				
Effie Lelles + Alice Isaacson	NE 1/4 of NW 1/4				40			F	375	490				173					173				
" " " "	NW 1/4 of NW 1/4				40			F	240					48					48				
John A. Carlson	SW 1/4 of NW 1/4				40			F	265					53					53				
" " "	SE 1/4 of NW 1/4				40			F	475					95					95				
" " "	NE 1/4 of SW 1/4				40			F	290	1065				271					271				
" " "	NW 1/4 of SW 1/4				40			F	225					45					45				
Bert A. + Delphine Quine	SW 1/4 of SW 1/4				40			F	375					75					75				
" " "	SE 1/4 of SW 1/4				40			F	260	500				152					152				
Leonard + Jane Nygren	NE 1/4 of SE 1/4				40			F	285					95					95				
Bert A. + Delphine Quine	NW 1/4 of SE 1/4				40			F	240					48					48				
Gerald V. Harney	SW 1/4 of SE 1/4				40			F	210	25				47					47				
Leonard + Jane Nygren	SE 1/4 of SE 1/4				40			F	420	789				493					493				
					640				4670	2869				1783					1783				

SOLD FOR TAXES	VALUATIONS BY SCHOOL DISTRICTS AS EQUALIZED BY DEPARTMENT OF TAXATION						Tax Including State Homestead	State Tax on Non-Homestead	SPECIAL TAXES	SPECIAL TAXES	TOTAL TAXES	PAID	WHEN PAID	Number of Receipt	March Settlement 1963	June Settlement 1963	Penalty	November Settlement 1963	Penalty	Collections to First Monday in January 1964	Penalty	Delinquent on First Monday in January 1964	Total Delinquent Tax and Penalty	REMARKS																
	District No.	District No.	District No.	District No.	District No.	District No.																			Rate	Rate	Rate	Rate	Rate	Rate	Rate	Rate	Rate	Rate	Rate	Rate	Rate	Rate	Rate	Rate
	Dollars	Dollars	Dollars	Dollars	Dollars	Dollars																			Mills	Mills	Mills	Mills	Mills	Mills	Mills	Mills	Mills	Mills	Mills	Mills	Mills	Mills	Mills	Mills
1																																								
2																																								
3																																								
4																																								
5																																								
6																																								
7																																								
8	SOLD FOR TAXES																																							
9	SOLD FOR TAXES																																							
10																																								
11	SOLD FOR TAXES																																							
12	SOLD FOR TAXES																																							
13																																								
14																																								
15																																								
16																																								
17																																								
18	SOLD FOR TAXES																																							
19																																								
20																																								

Personal

Assessment Roll and Tax List of Real Property in the Town of May

* Indicate Type of Property: R-Residential, C-Commercial, I-Industrial, U-Utility, F-Farm, L-Lakeshore, T-Timber, M-Mineral

Cass County, Minnesota, for Taxes for the Year 1962.

Table with columns: IN WHOSE NAME ASSESSED, DESCRIPTION OF PROPERTY, TRUE AND FULL VALUATIONS, ASSESSED VALUATIONS, VALUATIONS BY SCHOOL DISTRICTS AS EQUALIZED BY DEPARTMENT OF TAXATION, TAXES, PAID, WHEN PAID, March Settlement 1963, June Settlement 1963, Penalty, November Settlement 1963, Penalty, Collections to First Monday in January 1964, Delinquent on First Monday in January 1964, Total Delinquent Tax and Penalty, REMARKS.

Assessment Roll and Tax List of Real Property in the Town of Maaf, * Indicate Type of Property: R-Residential, C-Commercial, I-Industrial, U-Utility, F-Farm, L-Lakeshore, T-Timber, M-Mineral

Cass County, Minnesota, for Taxes for the Year 1962.

Table with columns: IN WHOSE NAME ASSESSED, DESCRIPTION OF PROPERTY, TRUE AND FULL VALUATIONS, ASSESSED VALUATIONS, VALUATIONS BY SCHOOL DISTRICTS AS EQUALIZED BY DEPARTMENT OF TAXATION, SOLD FOR TAXES, PAID, WHEN PAID, Number of Receipt, March Settlement 1963, June Settlement 1963, November Settlement 1963, Collections to First Monday in January 1964, Delinquent on First Monday in January 1964, Total Delinquent Tax and Penalty, REMARKS.

Real Estate 133 - 31

134 - 31

Personal

Assessment Roll and Tax List of Real Property in the Town of May, Minnesota

Cass County, Minnesota, for Taxes for the Year 1962.

Form 500 - MILLER-DAVIS CO., MINNEAPOLIS

Table with columns: IN WHOSE NAME ASSESSED, DESCRIPTION OF PROPERTY, TRUE AND FULL VALUATIONS, ASSESSED VALUATIONS, VALUATIONS BY SCHOOL DISTRICTS AS EQUALIZED BY DEPARTMENT OF TAXATION, SOLD FOR TAXES, PAID, WHEN PAID, Number of Receipt, March Settlement 1963, June Settlement 1963, Penalty, November Settlement 1963, Penalty, Collections to First Monday in January 1964, Penalty, Delinquent on First Monday in January 1964, Total Delinquent Tax and Penalty, REMARKS.

Real Estate 133 - 31

134 - 31

Personal

Assessment Roll and Tax List of Real Property in the Town of Meek

* Indicate Type of Property: R-Residential, C-Commercial, I-Industrial, U-Utility, F-Farm, L-Lakeshore, T-Timber, M-Mineral

Cass County, Minnesota, for Taxes for the Year 1962.

Table with columns: IN WHOSE NAME ASSESSED, DESCRIPTION OF PROPERTY, TRUE AND FULL VALUATIONS, ASSESSED VALUATIONS, VALUATIONS BY SCHOOL DISTRICTS AS EQUALIZED BY DEPARTMENT OF TAXATION, TAXES, PAID, WHEN PAID, Number of Receipt, March Settlement, June Settlement, Penalty, November Settlement, Penalty, Collections to First Monday in January 1964, Delinquent on First Monday in January 1964, Total Delinquent Tax and Penalty, REMARKS.

Real Estate 133 - 31

134 - 31

Personal

Assessment Roll and Tax List of Real Property in the Town of May, Minnesota

Cass County, Minnesota, for Taxes for the Year 1962.

Form 5CD MILLER-DAVIS CO., MINNEAPOLIS

* Indicate Type of Property: R-Residential, C-Commercial, I-Industrial, U-Utility, F-Farm, L-Lakeshore, T-Timber, M-Mineral

Table with columns: IN WHOSE NAME ASSESSED, DESCRIPTION OF PROPERTY, TRUE AND FULL VALUATIONS, ASSESSED VALUATIONS, VALUATIONS BY SCHOOL DISTRICTS AS EQUALIZED BY DEPARTMENT OF TAXATION, TAXES, PAID, WHEN PAID, etc.

Personal

Assessment Roll and Tax List of Real Property in the Town of May, Minnesota

Cass County, Minnesota, for Taxes for the Year 1962.

Form 5CD MILLER-DAVIS CO., MINNEAPOLIS

* Indicate Type of Property: R-Residential, C-Commercial, I-Industrial, U-Utility, F-Farm, L-Lakeshore, T-Timber, M-Mineral

Table with columns for Property Description, Valuations (True and Full, Assessed), School Districts, and Taxes (Total, Special, Paid, When Paid). Includes handwritten entries for Wm. A. Pogreba and Raymond S. + Grace B. Miller.

131 - 31

Personal

Assessment Roll and Tax List of Real Property in the Town of Mont,
* Indicate Type of Property: R-Residential, C-Commercial, I-Industrial, U-Utility, F-Farm, L-Lakeshore, T-Timber, M-Mineral

Form 5CD MILLER-DAVIS CO., MINNEAPOLIS

IN WHOSE NAME ASSESSED	DESCRIPTION OF PROPERTY				No. School District	Indicate Home-stead Yes or No	Agri. or Non-Agri. Yes or No	Indicate Type of Property	TRUE AND FULL VALUATIONS				ASSESSED VALUATIONS							FINAL EQUALIZED VALUE Dollars		
	SUBDIVISION	Sec. or Lot	Town or Block	Rng.					Number of Acres of Land	LAND Excl. of Structures and Improvements	BUILDINGS and Other Structures	MACHINERY Permanently Attached to Real Estate	TOTAL True and Full Value	RURAL			ALL OTHER				TOTAL ASSESSED VALUE	Total Assessed Value as Equalized by the Board of Review
														Homestead Up to \$4,000 20%	Over \$4,000 and Non-Homestead 33 1/4%	Timber Land Class 3e 20%	Homestead Up to \$4,000 25%	Over \$4,000 and Non-Homestead 40%	MACHINERY Permanently Attached to Real Estate 33 1/4%			
					Acres 100ths				Dollars	Dollars	Dollars	Dollars	Dollars	Dollars	Dollars	Dollars	Dollars	Dollars	Dollars	Dollars		
<i>Bernard Lilly</i>																						

Cass County, Minnesota, for Taxes for the Year 1962.

NA

SOLD FOR TAXES	VALUATIONS BY SCHOOL DISTRICTS AS EQUALIZED BY DEPARTMENT OF TAXATION						Tax including State Homestead	State Tax on Non-Homestead	SPECIAL TAXES	SPECIAL TAXES	TOTAL TAXES	PAID	WHEN PAID	Number of Receipt	March Settlement 1963	June Settlement 1963	Penalty	November Settlement 1963	Penalty	Collections to First Monday in January 1964	Penalty	Delinquent on First Monday in January 1964	Total Delinquent Tax and Penalty	REMARKS
	District No.	District No.	District No.	District No.	District No.	District No.																		
	Rate	Rate	Rate	Rate	Rate	Rate																		

Personal

Assessment Roll and Tax List of Real Property in the Town of May

* Indicate Type of Property: R-Residential, C-Commercial, I-Industrial, U-Utility, F-Farm, L-Lakeshore, T-Timber, M-Mineral

Cass County, Minnesota, for Taxes for the Year 1962.

IN WHOSE NAME ASSESSED	DESCRIPTION OF PROPERTY				No. School District	Indicate Homestead Yes or No	Agri. or Non-Agri. Yes or No	Indicate Type of Property	TRUE AND FULL VALUATIONS			ASSESSED VALUATIONS							FINAL EQUALIZED VALUE			
	SUBDIVISION	Sec. or Lot	Town or Block	Rng.					Number of Acres of Land	LAND Exclusive of Structures and Improvements	BUILDINGS and Other Structures	MACHINERY Permanently Attached to Real Estate	TOTAL True and Full Value	RURAL		ALL OTHER		MACHINERY Permanently Attached to Real Estate		Seasonal and Recreational Cabins	TOTAL ASSESSED VALUE	Total Assessed Value as Equalized by the Board of Review
														Acres 100ths	Homestead Up to \$4,000 20%	Over \$4,000 and Non-Homestead 33 1/3%	Timber Land Class 3e 20%					
Irvin + Florence Marrow									180							36						
	N W 1/4 of NE 1/4	21	133	31	26.38			T	180							36						
	S W 1/4 of NE 1/4																					
	S E 1/4 of NE 1/4																					
	NE 1/4 of NW 1/4																					
	NW 1/4 of NW 1/4																					
	SW 1/4 of NW 1/4																					
	SE 1/4 of NW 1/4																					
	NE 1/4 of SW 1/4																					
	NW 1/4 of SW 1/4																					
	SW 1/4 of SW 1/4																					
	SE 1/4 of SW 1/4																					
	NE 1/4 of SE 1/4																					
	NW 1/4 of SE 1/4																					
	SW 1/4 of SE 1/4																					
	SE 1/4 of SE 1/4																					
					26.38				180							36						

SOLD FOR TAXES	VALUATIONS BY SCHOOL DISTRICTS AS EQUALIZED BY DEPARTMENT OF TAXATION						Tax Including State Homestead	State Tax on Non-Homestead	SPECIAL TAXES	SPECIAL TAXES	TOTAL TAXES	PAID	WHEN PAID	Number of Receipt	March Settlement 1963	June Settlement 1963	Penalty	November Settlement 1963	Penalty	Collections to First Monday in January 1964	Penalty	Delinquent on First Monday in January 1964	Total Delinquent Tax and Penalty	REMARKS
	District No.	District No.	District No.	District No.	District No.	District No.																		
	Rate	Rate	Rate	Rate	Rate	Rate																		

134 - 31

Personal

Assessment Roll and Tax List of Real Property in the Town of May, Minnesota

Cass County, Minnesota, for Taxes for the Year 1962.

Table with columns: IN WHOSE NAME ASSESSED, DESCRIPTION OF PROPERTY, TRUE AND FULL VALUATIONS, ASSESSED VALUATIONS, and FINAL EQUALIZED VALUE. Includes entries for Harry C. Knutson, State of Minnesota, Patrick J. & Irene M. Donahue, Forrest Davis, and Forrest Davis.

Table with columns: VALUATIONS BY SCHOOL DISTRICTS AS EQUALIZED BY DEPARTMENT OF TAXATION, TAX INCLUDING STATE HOMESTEAD, SPECIAL TAXES, PAID, WHEN PAID, and REMARKS. Includes handwritten notes and dates like 'PAID IN FULL MAY 6 1963'.

131 - 31

Personal

Assessment Roll and Tax List of Real Property in the Town of May

* Indicate Type of Property: R-Residential, C-Commercial, I-Industrial, U-Utility, F-Farm, L-Lakeshore, T-Timber, M-Mineral

Table with columns: IN WHOSE NAME ASSESSED, DESCRIPTION OF PROPERTY, TRUE AND FULL VALUATIONS, ASSESSED VALUATIONS, and FINAL EQUALIZED VALUE. Includes entries for Pete Gaalswyc, C. Leslie J. Wesley Carlson, Alfred R. Hoyle, Jr., and St. Olaf College.

Cass County, Minnesota, for Taxes for the Year 1962.

Table with columns: SOLD FOR TAXES, VALUATIONS BY SCHOOL DISTRICTS AS EQUALIZED BY DEPARTMENT OF TAXATION, Tax Including State Homestead, State Tax on Non-Homestead, SPECIAL TAXES, TOTAL TAXES, PAID, WHEN PAID, Number of Receipt, March Settlement 1963, June Settlement 1963, November Settlement 1963, Penalty, Collections to First Monday in January 1964, Delinquent on First Monday in January 1964, Total Delinquent Tax and Penalty, REMARKS. Includes handwritten notes and dates like 'PAID IN FULL MAY 31 1963'.

Assessment Roll and Tax List of Real Property in the Town of May, Minnesota

Form SCD MILLER-DAVIS CO., MINNEAPOLIS

Table with columns: IN WHOSE NAME ASSESSED, DESCRIPTION OF PROPERTY, TRUE AND FULL VALUATIONS, ASSESSED VALUATIONS, and FINAL EQUALIZED VALUE.

Cass County, Minnesota, for Taxes for the Year 1962.

Table with columns: VALUATIONS BY SCHOOL DISTRICTS AS EQUALIZED BY DEPARTMENT OF TAXATION, TAX INCLUDING STATE HOMESTEAD, STATE TAX ON NON-HOMESTEAD, SPECIAL TAXES, TOTAL TAXES, PAID, WHEN PAID, Number of Receipt, March Settlement 1963, June Settlement 1963, November Settlement 1963, Collections to First Monday in January 1964, Delinquent on First Monday in January 1964, Total Delinquent Tax and Penalty, REMARKS.

Real Estate 133 - 31

134 - 31

Personal

Assessment Roll and Tax List of Real Property in the Town of Maple, Minnesota

Form SCD - MILLER-DAVIS CO., MINNEAPOLIS

Table with columns: IN WHOSE NAME ASSESSED, DESCRIPTION OF PROPERTY, TRUE AND FULL VALUATIONS, ASSESSED VALUATIONS, FINAL EQUALIZED VALUE. Includes entries for St. Olaf College and Frank A. Reid.

Cass County, Minnesota, for Taxes for the Year 1962.

Table with columns: SOLD FOR TAXES, VALUATIONS BY SCHOOL DISTRICTS AS EQUALIZED BY DEPARTMENT OF TAXATION, TAX INCLUDING STATE HOMESTEAD, SPECIAL TAXES, TOTAL TAXES, PAID, WHEN PAID, Number of Receipt, March Settlement, June Settlement, November Settlement, Collections to First Monday in January, Delinquent on First Monday in January, Total Delinquent Tax and Penalty, REMARKS.

131 - 31

Personal

Assessment Roll and Tax List of Real Property in the Town of May * Indicate Type of Property: R-Residential, C-Commercial, I-Industrial, U-Utility, F-Farm, L-Lakeshore, T-Timber, M-Mineral

Cass County, Minnesota, for Taxes for the Year 1962.

Table with columns: IN WHOSE NAME ASSESSED, DESCRIPTION OF PROPERTY, TRUE AND FULL VALUATIONS, ASSESSED VALUATIONS, VALUATIONS BY SCHOOL DISTRICTS AS EQUALIZED BY DEPARTMENT OF TAXATION, TAXES, PAID, WHEN PAID, Number of Receipt, March Settlement 1963, June Settlement 1963, November Settlement 1963, Collections to First Monday in January 1964, Delinquent on First Monday in January 1964, Total Delinquent Tax and Penalty, REMARKS. Includes handwritten entries for Ralph L. & Lydda M. Larson and Minnesota Power & Light Co.

Assessment Roll and Tax List of Real Property in the Town of May, Minnesota

Cass County, Minnesota, for Taxes for the Year 1962.

134 - 31

Table with columns: IN WHOSE NAME ASSESSED, DESCRIPTION OF PROPERTY, TRUE AND FULL VALUATIONS, ASSESSED VALUATIONS, VALUATIONS BY SCHOOL DISTRICTS AS EQUALIZED BY DEPARTMENT OF TAXATION, SOLD FOR TAXES, PAID, WHEN PAID, Number of Receipt, March Settlement 1963, June Settlement 1963, November Settlement 1963, Collections to First Monday in January 1964, Delinquent on First Monday in January 1964, Total Delinquent Tax and Penalty, REMARKS.

Assessment Roll and Tax List of Real Property in the Town of Maple

Form SCD - MILLER-DAVIS CO., MINNEAPOLIS

* Indicate Type of Property: R-Residential, C-Commercial, I-Industrial, U-Utility, F-Farm, L-Lakeshore, T-Timber, M-Mineral

Cass County, Minnesota, for Taxes for the Year 1962.

Table with columns: IN WHOSE NAME ASSESSED, DESCRIPTION OF PROPERTY, TRUE AND FULL VALUATIONS, ASSESSED VALUATIONS, VALUATIONS BY SCHOOL DISTRICTS AS EQUALIZED BY DEPARTMENT OF TAXATION, TAXES, PAID, WHEN PAID, Number of Receipt, March Settlement 1963, June Settlement 1963, November Settlement 1963, Collections to First Monday in January 1964, Delinquent on First Monday in January 1964, Total Delinquent Tax and Penalty, REMARKS.

134 - 31

Personal

~~NY~~

.00*

4.50

3.85

6.00

1 4.35*

Assessment Roll and Tax List of Real Property in the Town of May, Minnesota

Cass County, Minnesota, for Taxes for the Year 1962.

Form SCD - MILLER-DAVIS CO., MINNEAPOLIS

* Indicate Type of Property: R-Residential, C-Commercial, I-Industrial, U-Utility, F-Farm, L-Lakeshore, T-Timber, M-Mineral

Main assessment roll table with columns for IN WHOSE NAME ASSESSED, DESCRIPTION OF PROPERTY, TRUE AND FULL VALUATIONS, ASSESSED VALUATIONS, VALUATIONS BY SCHOOL DISTRICTS AS EQUALIZED BY DEPARTMENT OF TAXATION, and TAXES.

134 - 31

Personal

Assessment Roll and Tax List of Real Property in the Town of May

Form SCD - MILLER-DAVIS CO., MINNEAPOLIS

* Indicate Type of Property: R-Residential, C-Commercial, I-Industrial, U-Utility, F-Farm, L-Lakeshore, T-Timber, M-Mineral

134 - 31

Table with columns: IN WHOSE NAME ASSESSED, DESCRIPTION OF PROPERTY, TRUE AND FULL VALUATIONS, ASSESSED VALUATIONS, FINAL EQUALIZED VALUE. Includes entries for State of Minnesota and Archie E. & Hilda Crocker.

Cass County, Minnesota, for Taxes for the Year 1962.

Table with columns: VALUATIONS BY SCHOOL DISTRICTS AS EQUALIZED BY DEPARTMENT OF TAXATION, TAX INCLUDING STATE HOMESTEAD, SPECIAL TAXES, TOTAL TAXES, PAID, WHEN PAID, Number of Receipt, March Settlement, June Settlement, November Settlement, Collections to First Monday in January 1964, Delinquent on First Monday in January 1964, Total Delinquent Tax and Penalty, REMARKS. Includes handwritten notes and dates.

Personal

Assessment Roll and Tax List of Real Property in the Town of May, Minnesota

Form SCD - MILLER-DAVIS CO., MINNEAPOLIS

* Indicate Type of Property: R-Residential, C-Commercial, I-Industrial, U-Utility, F-Farm, L-Lakeshore, T-Timber, M-Mineral

Cass County, Minnesota, for Taxes for the Year 1962.

Table with columns for property description, valuations, taxes, and payments. Includes entries for Archie E. Crocker, Harry & Evelyn Hedges, Albert Pietz, State of Minnesota, and Albert H. Pietz. Columns include 'IN WHOSE NAME ASSESSED', 'DESCRIPTION OF PROPERTY', 'TRUE AND FULL VALUATIONS', 'ASSESSED VALUATIONS', 'VALUATIONS BY SCHOOL DISTRICTS AS EQUALIZED BY DEPARTMENT OF TAXATION', and 'PAID WHEN PAID'.

Personal

Assessment Roll and Tax List of Real Property in the Town of May

* Indicate Type of Property: R-Residential, C-Commercial, I-Industrial, U-Utility, F-Farm, L-Lakeshore, T-Timber, M-Mineral

FORM SCD - MILLER-DAVIS CO., MINNEAPOLIS

Table with columns: IN WHOSE NAME ASSESSED, DESCRIPTION OF PROPERTY, TRUE AND FULL VALUATIONS, ASSESSED VALUATIONS, and FINAL EQUALIZED VALUE. Includes entries for Leslie Horn, Daniel A. Francis, Paul R. & Evelyn Riedel, H.L. Crocker, Theodore Hillman, and State of Minnesota.

Cass County, Minnesota, for Taxes for the Year 1962.

Table with columns: VALUATIONS BY SCHOOL DISTRICTS AS EQUALIZED BY DEPARTMENT OF TAXATION, Tax Including State Homestead, State Tax on Non-Homestead, SPECIAL TAXES, TOTAL TAXES, PAID, WHEN PAID, Number of Receipt, March Settlement, June Settlement, November Settlement, Collections to First Monday in January 1964, Delinquent on First Monday in January 1964, Total Delinquent Tax and Penalty, REMARKS. Includes entries for various school districts and tax payments.

134 - 31

Personal

Assessment Roll and Tax List of Real Property in the Town of May

Cass County, Minnesota, for Taxes for the Year 1962.

Form SCD MILLER-DAVIS CO., MINNEAPOLIS

* Indicate Type of Property: R-Residential, C-Commercial, I-Industrial, U-Utility, F-Farm, L-Lakeshore, T-Timber, M-Mineral

Table with columns: IN WHOSE NAME ASSESSED, DESCRIPTION OF PROPERTY, TRUE AND FULL VALUATIONS, ASSESSED VALUATIONS, VALUATIONS BY SCHOOL DISTRICTS AS EQUALIZED BY DEPARTMENT OF TAXATION, TAXES, PAID, WHEN PAID, etc.

Assessment Roll and Tax List of Real Property in the Town of May, Minnesota

Form 500 MILLER-DAVIS CO., MINNEAPOLIS

* Indicate Type of Property: R-Residential, C-Commercial, I-Industrial, U-Utility, F-Farm, L-Lakeshore, T-Timber, M-Mineral

Cass County, Minnesota, for Taxes for the Year 1962.

Table with columns for IN WHOSE NAME ASSESSED, DESCRIPTION OF PROPERTY, TRUE AND FULL VALUATIONS, ASSESSED VALUATIONS, VALUATIONS BY SCHOOL DISTRICTS AS EQUALIZED BY DEPARTMENT OF TAXATION, SOLD FOR TAXES, SPECIAL TAXES, TOTAL TAXES, PAID, WHEN PAID, Number of Receipt, March Settlement 1963, June Settlement 1963, November Settlement 1963, Collections to First Monday in January 1964, Delinquent on First Monday in January 1964, Total Delinquent Tax and Penalty, REMARKS.

134 - 31

Personal

Assessment Roll and Tax List of Real Property in the Town of May

Cass County, Minnesota, for Taxes for the Year 1962.

Form SCD - MILLER-DAVIS CO., MINNEAPOLIS

IN WHOSE NAME ASSESSED	DESCRIPTION OF PROPERTY				No. School District	Indicate Homestead Yes or No	Agricultural Yes or No	Indicate Type of Property	TRUE AND FULL VALUATIONS				ASSESSED VALUATIONS							FINAL EQUALIZED VALUE									
	SUBDIVISION	Sec. or Lot	Town or Block	Rng. Acres					Number of Acres of Land	LAND Exclusive of Structures and Improvements	BUILDINGS and Other Structures	MACHINERY Permanently Attached to Real Estate	TOTAL True and Full Value	RURAL			ALL OTHER				MACHINERY Permanently Attached to Real Estate	Seasonal and Recreational Cabins	TOTAL ASSESSED VALUE	Total Assessed Value as Equalized by the Board of Review	Dollars				
														Homestead Up to \$4,000	Over \$4,000 and Non-Homestead	Timber Land Class 3e	Homestead Up to \$4,000	Over \$4,000 and Non-Homestead	Homestead							Over \$4,000 and Non-Homestead	Dollars	Dollars	Dollars
														20%	33 1/3%	20%	25%	40%	33 1/3%							33 1/3%	Dollars	Dollars	Dollars
John S. Martin	1	NEW of NEW	16 134 31	40	483	No	Yes	F	189				189				63	63											
State of Minnesota	2	NW 1/4 of NEW																											
State of Minnesota	3	SW 1/4 of NEW																											
Yvonne E. Martin	4	SE 1/4 of NEW		40		No	Yes	F	300				300		60		60	60											
Lester Brunns	6	NE 1/4 of NW 1/4		40		No	Yes	F	279				279				93	93											
"	7	NW 1/4 of NW 1/4		40		No	Yes	F	300	99			399				133	133											
"	8	SW 1/4 of NW 1/4		40		No	Yes	F	189				189				63	63											
"	9	SE 1/4 of NW 1/4		40		No	Yes	F	399				399				133	133											
"	11	NE 1/4 of SW 1/4		40		No	Yes	F	330				330				110	110											
"	12	NW 1/4 of SW 1/4		40		No	Yes	F	279				279				93	93											
"	13	SW 1/4 of SW 1/4		40		No	Yes	F	207				207				69	69											
"	14	SE 1/4 of SW 1/4		40		No	Yes	F	309				309				103	103											
Yvonne E. Martin	16	NE 1/4 of SE 1/4		40		No	Yes	F	200	475			675		135		135	135											
State of Minnesota	17	NW 1/4 of SE 1/4																											
Yvonne E. Martin	18	SW 1/4 of SE 1/4		40		No	Yes	F	250				250		50		50	50											
"	19	SE 1/4 of SE 1/4		40		No	Yes	F	250				250		50		50	50											
	20			520					3481	574			4055		295		860	1155											

SOLD FOR TAXES	VALUATIONS BY SCHOOL DISTRICTS AS EQUALIZED BY DEPARTMENT OF TAXATION						Tax Including State Homestead	State Tax on Non-Homestead	SPECIAL TAXES	SPECIAL TAXES	TOTAL TAXES	PAID	WHEN PAID	Number of Receipt	March Settlement 1963	June Settlement 1963	Penalty	November Settlement 1963	Penalty	Collections to First Monday in January 1964	Penalty	Delinquent on First Monday in January 1964	Total Delinquent Tax and Penalty	REMARKS																		
	District No.	District No.	District No.	District No.	District No.	District No.																			Dollars	Dollars	Dollars	Dollars	Dollars	Dollars	Dollars	Dollars	Dollars	Dollars	Dollars	Dollars	Dollars	Dollars	Dollars	Dollars	Dollars	
	Rate	Rate	Rate	Rate	Rate	Rate																			cts.	cts.	cts.	cts.	cts.	cts.	cts.	cts.	cts.	cts.	cts.	cts.	cts.	cts.	cts.	cts.	cts.	cts.
	Mills	Mills	Mills	Mills	Mills	Mills																																				
							63	1530	54			1584	2nd HALF PAID OCT 31 1963									20430	9904																			
							63	1530	54			1584	1st HALF PAID MAY 31 1963			7 92		792																								
							H 60	1456				1456	2nd HALF PAID NOV 1 8 1963									20429	18637																			
							H 60	1456				1456	1st HALF PAID APR 6 1963			7 28																										
SOLD FOR TAXES							93	2258	80			2338	1st HALF PAID OCT 31 1963									1169	81286	18628																		
SOLD FOR TAXES							133	3228	114			3342	1st HALF PAID OCT 31 1963									1671	81858																			
SOLD FOR TAXES							63	1530	54			1584	1st HALF PAID OCT 31 1963									792	871																			
SOLD FOR TAXES							133	3228	114			3342	1st HALF PAID OCT 31 1963									1671	81858																			
SOLD FOR TAXES							110	2670	94			2764	1st HALF PAID OCT 31 1963										1382	81520	18628																	
SOLD FOR TAXES							93	2258	80			2338	1st HALF PAID OCT 31 1963									1169	81286																			
SOLD FOR TAXES							69	1674	58			1732	1st HALF PAID OCT 31 1963									866	8953																			
SOLD FOR TAXES							103	2500	88			2588	1st HALF PAID OCT 31 1963									1294	81423																			
							H 135	3276				3276	2nd HALF PAID NOV 1 8 1963																													
							H 135	3276				3276	1st HALF PAID APR 6 1963			16 35						20429	18637																			
							H 50	1214				1214	Balance Paid NOV 1 8 1963																													
							H 50	1214				1214	Part Paid APR 6 1963										20429	18637																		
							H 50	1214				1214	Balance Paid NOV 1 8 1963			12 34																										
							H 50	1214				1214	Part Paid APR 6 1963																													
							H 295	28036	736			28772			43 92		10806					18014																				

Assessment Roll and Tax List of Real Property in the Town of Maple, * Indicate Type of Property: R-Residential, C-Commercial, I-Industrial, U-Utility, F-Farm, L-Lakeshore, T-Timber, M-Mineral

Form SCD MILLER-DAVIS CO., MINNEAPOLIS

Cass County, Minnesota, for Taxes for the Year 1962.

Table with columns: IN WHOSE NAME ASSESSED, DESCRIPTION OF PROPERTY, TRUE AND FULL VALUATIONS, ASSESSED VALUATIONS, VALUATIONS BY SCHOOL DISTRICTS AS EQUALIZED BY DEPARTMENT OF TAXATION, TAX INCLUDING STATE HOMESTEAD, SPECIAL TAXES, TOTAL TAXES, PAID, WHEN PAID, Number of Receipt, March Settlement 1963, June Settlement 1963, November Settlement 1963, Collections to First Monday in January 1964, Delinquent on First Monday in January 1964, Total Delinquent Tax and Penalty, REMARKS.

134 - 31

Personal

Assessment Roll and Tax List of Real Property in the Town of May

* Indicate Type of Property: R-Residential, C-Commercial, I-Industrial, U-Utility, F-Farm, L-Lakeshore, T-Timber, M-Mineral

Form SCD - MILLER-DAVIS CO., MINNEAPOLIS

Cass County, Minnesota, for Taxes for the Year 1962.

IN WHOSE NAME ASSESSED	DESCRIPTION OF PROPERTY				No. School District	Indicate Homestead Yes or No	Agricultural Use Yes or No	* Indicate Type of Property	TRUE AND FULL VALUATIONS				ASSESSED VALUATIONS						FINAL EQUALIZED VALUE	SOLD FOR TAXES	VALUATIONS BY SCHOOL DISTRICTS AS EQUALIZED BY DEPARTMENT OF TAXATION						SPECIAL TAXES	SPECIAL TAXES	TOTAL TAXES	PAID	WHEN PAID	Number of Receipt	March Settlement 1963	June Settlement 1963	Penalty	November Settlement 1963	Penalty	Collections to First Monday in January 1964	Penalty	Delinquent on First Monday in January 1964	Total Delinquent Tax and Penalty	REMARKS					
	SUBDIVISION	Sec. or Lot	Town or Block	Rng.					Number of Acres of Land	LAND Exclusive of Structures and Improvements	BUILDINGS and Other Structures	MACHINERY Permanently Attached to Real Estate	TOTAL True and Full Value	RURAL			ALL OTHER				TOTAL ASSESSED VALUE	Total Assessed Value as Equalized by the Board of Review	District No.	District Rate	District No.	District Rate																	District No.	District Rate	Tax Including State Homestead	State Tax on Non-Homestead	
														Homestead Up to \$4,000 20%	Over \$4,000 and Non-Homestead 33 1/3%	Timber Land Class 3e 20%	Homestead Up to \$4,000 25%	Over \$4,000 and Non-Homestead 40%																													MACHINERY Permanently Attached to Real Estate 33 1/3%
Harry J. & Esther Moran	NEW of NEW	19	134 31	40	483		F	255	575	830	166				166	1	H 166					4028			4028	2 nd HALF PAID OCT 31 1963																					
" "	NW 1/4 of NEW			40			F	130		130	26			26	2	H 26						632			632	2 nd HALF PAID OCT 31 1963											20426	9909									
" "	SW 1/4 of NEW			40			F	560		560	112			112	3	H 112						2718		20713	2718	2 nd HALF PAID OCT 31 1963																					
" "	SE 1/4 of NEW			40			F	250		250	50			50	4	H 50						1214		15347	1214	2 nd HALF PAID OCT 31 1963																					
Guy R. Erwin	NEW of NEW			144 88			F	834	594	1428	476			476	6	H 476	Abate # 9016					6938			6938	PAID IN FULL MAR 20 1963																					
Reynold Krupke	NEW of NEW			40			F	240	100	340	68			68	7	H 68						1650			1650	2 nd HALF PAID OCT 15 1963												50.20 Abated	9911								
" "	SW 1/4 of NEW			40			F	200		200	40			40	8	H 40						970			970	2 nd HALF PAID OCT 15 1963												20425	9910								
" "	SE 1/4 of NEW			40			F	180		180	60			60	9	H 60						1456	52		1508	2 nd HALF PAID OCT 15 1963																					
" "	SW 1/4 of NEW			40			F	280		280	56			56	10	H 56						1360			1360	2 nd HALF PAID OCT 15 1963																					
Reynold W. & Elouise H. Krupke	NEW of NEW			149 88			F	1625	675	2300	460			460	11	H 460						11164			11164	2 nd HALF PAID OCT 15 1963																					
" "	NEW of NEW			40			F	190		190	38			38	12	H 38						922			922	2 nd HALF PAID OCT 15 1963																					
" "	SW 1/4 of NEW			40			F	300		300	60			60	13	H 60						1456			1456	2 nd HALF PAID OCT 15 1963																					
" "	SW 1/4 of NEW			39			F	234		234	78			78	14	H 78						1894	66		1960	2 nd HALF PAID OCT 15 1963																					
" "	SW 1/4 of NEW			40			F	240		240	80			80	15	H 80						1942	68		2010	2 nd HALF PAID OCT 15 1963																					
State of Minnesota	NEW of SEW														16																																
State of Minnesota	NW 1/4 of SEW														17																																
State of Minnesota	SW 1/4 of SEW														18																																
State of Minnesota	SE 1/4 of SEW														19																																
Palmer Explor	1 ac. of Cont. Pat 15			1			F	12		12	4			4	20							98	84		102	PAID IN FULL DEC 18 1963																					
				734 76				5530	1944	7474	1076			698								43056	596		43652																						

Personal

Assessment Roll and Tax List of Real Property in the Town of May, Minnesota

Form SCD MILLER-DAVIS CO., MINNEAPOLIS

* Indicate Type of Property: R-Residential, C-Commercial, I-Industrial, U-Utility, F-Farm, L-Lakeshore, T-Timber, M-Mineral

Table with columns: IN WHOSE NAME ASSESSED, SUBDIVISION, Sec. or Lot, Town or Block, Rng., Number of Acres of Land, No. School District, Indicate Home-Stepped Yes or No, Indicate Agri. or Recr. Yes or No, Indicate Type of Property, TRUE AND FULL VALUATIONS (LAND, BUILDINGS, MACHINERY, TOTAL), ASSESSED VALUATIONS (RURAL, ALL OTHER, MACHINERY, Seasonal and Recreational Cabins, TOTAL ASSESSED VALUE, Total Assessed Value as Equalized by the Board of Review), FINAL EQUALIZED VALUE.

Cass County, Minnesota, for Taxes for the Year 1962.

Table with columns: VALUATIONS BY SCHOOL DISTRICTS AS EQUALIZED BY DEPARTMENT OF TAXATION (District No., Rate, Mills), Tax Including State Homestead, State Tax on Non-Homestead, SPECIAL TAXES, TOTAL TAXES, PAID, WHEN PAID, Number of Receipt, March Settlement 1963, June Settlement 1963, November Settlement 1963, Collections to First Monday in January 1964, Delinquent on First Monday in January 1964, Total Delinquent Tax and Penalty, REMARKS.

134 - 31

Personal

Assessment Roll and Tax List of Real Property in the Town of May

Form SCD - MILLER-DAVIS CO., MINNEAPOLIS * Indicate Type of Property: R-Residential, C-Commercial, I-Industrial, U-Utility, F-Farm, L-Lakeshore, T-Timber, M-Mineral

Table with columns: IN WHOSE NAME ASSESSED, SUBDIVISION, DESCRIPTION OF PROPERTY, TRUE AND FULL VALUATIONS, ASSESSED VALUATIONS, and FINAL EQUALIZED VALUE. Includes handwritten entries for various property owners like Clara L. Harriehs, Emma Anderson, and Henry & Ulla Pietz.

Cass County, Minnesota, for Taxes for the Year 1962.

Table with columns: VALUATIONS BY SCHOOL DISTRICTS AS EQUALIZED BY DEPARTMENT OF TAXATION, Tax Including State Homestead, SPECIAL TAXES, TOTAL TAXES, PAID, WHEN PAID, and REMARKS. Includes handwritten entries for various tax payments and dates.

Assessment Roll and Tax List of Real Property in the Town of May,

* Indicate Type of Property: R-Residential, C-Commercial, I-Industrial, U-Utility, F-Farm, L-Lakeshore, T-Timber, M-Mineral

Form SCD - MILLER-DAVIS CO., MINNEAPOLIS

Table with columns: IN WHOSE NAME ASSESSED, DESCRIPTION OF PROPERTY, TRUE AND FULL VALUATIONS, ASSESSED VALUATIONS, FINAL EQUALIZED VALUE.

Cass County, Minnesota, for Taxes for the Year 1962.

Table with columns: VALUATIONS BY SCHOOL DISTRICTS AS EQUALIZED BY DEPARTMENT OF TAXATION, Tax Including State Homestead, State Tax on Non-Homestead, SPECIAL TAXES, TOTAL TAXES, PAID, WHEN PAID, Number of Receipt, March Settlement 1963, June Settlement 1963, November Settlement 1963, Penalty, Collections to First Monday in January 1964, Delinquent on First Monday in January 1964, Total Delinquent Tax and Penalty, REMARKS.

Assessment Roll and Tax List of Real Property in the Town of May

Cass County, Minnesota, for Taxes for the Year 1962.

Form 5CD MILLER-DAVIS CO., MINNEAPOLIS

Table with columns: IN WHOSE NAME ASSESSED, DESCRIPTION OF PROPERTY, TRUE AND FULL VALUATIONS, ASSESSED VALUATIONS, and FINAL EQUALIZED VALUE. Includes handwritten entries for property owners like 'Chas. & Nellie Edgen' and 'Otto Albert & Harriet Kober'.

Table with columns: VALUATIONS BY SCHOOL DISTRICTS AS EQUALIZED BY DEPARTMENT OF TAXATION, TAX INCLUDING STATE HOMESTEAD, SPECIAL TAXES, TOTAL TAXES, PAID, WHEN PAID, Number of Receipt, March Settlement, June Settlement, November Settlement, Collections to First Monday in January, Delinquent on First Monday in January, Total Delinquent Tax and Penalty, and REMARKS. Includes handwritten notes on payment dates like 'PAID IN FULL MAY 31 1963'.

Real Estate 133 - 31

Personal

Assessment Roll and Tax List of Real Property in the Town of May

* Indicate Type of Property: R-Residential, C-Commercial, I-Industrial, U-Utility, F-Farm, L-Lakeshore, T-Timber, M-Mineral

Form SCD MILLER-DAVIS CO., MINNEAPOLIS

Table with columns: IN WHOSE NAME ASSESSED, DESCRIPTION OF PROPERTY, TRUE AND FULL VALUATIONS, ASSESSED VALUATIONS, and FINAL EQUALIZED VALUE. Includes entries for Ferdinand & Calvin J. Martin, D. R. & Ludmila Rudbeck, D. R. Rudbeck, and Thomas & Norma Fleming.

Cass County, Minnesota, for Taxes for the Year 1962.

Table with columns: VALUATIONS BY SCHOOL DISTRICTS AS EQUALIZED BY DEPARTMENT OF TAXATION, TAXES, PAID, WHEN PAID, and REMARKS. Includes handwritten notes like '2nd HALF PAID OCT 31 1963' and 'PAID IN FULL APR 2 - 1963'.

Assessment Roll and Tax List of Real Property in the Town of May, Minnesota, of May, 1962. * Indicate Type of Property: R-Residential, C-Commercial, I-Industrial, U-Utility, F-Farm, L-Lakeshore, T-Timber, M-Mineral

Form SCD - MILLER-DAVIS CO., MINNEAPOLIS

Cass County, Minnesota, for Taxes for the Year 1962.

Table with columns: IN WHOSE NAME ASSESSED, DESCRIPTION OF PROPERTY, TRUE AND FULL VALUATIONS, ASSESSED VALUATIONS, VALUATIONS BY SCHOOL DISTRICTS AS EQUALIZED BY DEPARTMENT OF TAXATION, TAX INCLUDING STATE HOMESTEAD, SPECIAL TAXES, TOTAL TAXES, PAID, WHEN PAID, Number of Receipt, March Settlement, June Settlement, Penalty Settlement, Collections to First Monday in January 1964, Delinquent on First Monday in January 1964, Total Delinquent Tax and Penalty, REMARKS.

Assessment Roll and Tax List of Real Property in the Town of May

Cass County, Minnesota, for Taxes for the Year 1962.

Form 500 MILLER-DAVIS CO., MINNEAPOLIS

* Indicate Type of Property: R-Residential, C-Commercial, I-Industrial, U-Utility, F-Farm, L-Lakeshore, T-Timber, M-Mineral

Table with columns: IN WHOSE NAME ASSESSED, DESCRIPTION OF PROPERTY, TRUE AND FULL VALUATIONS, ASSESSED VALUATIONS, VALUATIONS BY SCHOOL DISTRICTS AS EQUALIZED BY DEPARTMENT OF TAXATION, TAX INCLUDING STATE HOMESTEAD, SPECIAL TAXES, TOTAL TAXES, PAID, WHEN PAID, Number of Receipt, March Settlement, June Settlement, November Settlement, Collections to First Monday in January 1964, Delinquent on First Monday in January 1964, Total Delinquent Tax and Penalty, REMARKS.

Assessment Roll and Tax List of Real Property in the Town of May

Cass County, Minnesota, for Taxes for the Year 1962.

Form 50D MILLER-DAVIS CO., MINNEAPOLIS

* Indicate Type of Property: R-Residential, C-Commercial, I-Industrial, U-Utility, F-Farm, L-Lakeshore, T-Timber, M-Mineral

Main table with columns: IN WHOSE NAME ASSESSED, DESCRIPTION OF PROPERTY, TRUE AND FULL VALUATIONS, ASSESSED VALUATIONS, VALUATIONS BY SCHOOL DISTRICTS AS EQUALIZED BY DEPARTMENT OF TAXATION, TAXES, PAID, WHEN PAID, Number of Receipt, March Settlement, June Settlement, November Settlement, Collections to First Monday in January, Delinquent on First Monday in January, Total Delinquent Tax and Penalty, REMARKS.

134 - 31

Personal

Assessment Roll and Tax List of Real Property in the Town of May

Form 3CD MILLER-DAVIS CO., MINNEAPOLIS

* Indicate Type of Property: R-Residential, C-Commercial, I-Industrial, U-Utility, F-Farm, L-Lakeshore, T-Timber, M-Mineral

Table with columns: IN WHOSE NAME ASSESSED, DESCRIPTION OF PROPERTY, TRUE AND FULL VALUATIONS, ASSESSED VALUATIONS, FINAL EQUALIZED VALUE. Includes entries for Mike Wassack, Clinton + Evelyn Converse, George J. Moon, James H. + Hazel M. Converse, etc.

Cass County, Minnesota, for Taxes for the Year 1962.

Table with columns: VALUATIONS BY SCHOOL DISTRICTS AS EQUALIZED BY DEPARTMENT OF TAXATION, Tax including State Homestead, SPECIAL TAXES, TOTAL TAXES, PAID, WHEN PAID, Number of Receipt, March Settlement, June Settlement, November Settlement, Collections to First Monday in January, Delinquent on First Monday in January, Total Delinquent Tax and Penalty, REMARKS. Includes entries for 1-20 with tax amounts and payment dates.

Assessment Roll and Tax List of Real Property in the Town of May,
* Indicate Type of Property: R-Residential, C-Commercial, I-Industrial, U-Utility, F-Farm, L-Lakeshore, T-Timber, M-Mineral

Form SCD MILLER-DAVIS CO., MINNEAPOLIS

Cass County, Minnesota, for Taxes for the Year 1962.

IN WHOSE NAME ASSESSED	DESCRIPTION OF PROPERTY				No. School District	Indicate Homestead Yes or No	Agri. or Sens. Recr. Yes or No	Indicate Type of Property	TRUE AND FULL VALUATIONS				ASSESSED VALUATIONS							FINAL EQUALIZED VALUE				
	SUBDIVISION	Sec. or Lot	Town or Block	Rng.					Number of Acres of Land	LAND Exclusive of Structures and Improvements	BUILDINGS and Other Structures	MACHINERY Permanently Attached to Real Estate	TOTAL True and Full Value	RURAL			ALL OTHER				MACHINERY Seasonal and Recreational Cabins	TOTAL ASSESSED VALUE	Total Assessed Value as Equalized by the Board of Review	
														Homestead Up to \$4,000	Over \$4,000 and Non-Homestead	Timber Land Class 3e	Homestead Up to \$4,000	Over \$4,000 and Non-Homestead	33 1/2 %					33 1/2 %
					Dollars	Dollars	Dollars	Dollars	Dollars	Dollars	Dollars	Dollars	Dollars	Dollars	Dollars	Dollars	Dollars	Dollars						
1	NE 1/4 of NE 1/4																							
2	NW 1/4 of NE 1/4																							
3	SW 1/4 of NE 1/4																							
4	SE 1/4 of NE 1/4																							
5																								
6	NE 1/4 of NW 1/4																							
7	NW 1/4 of NW 1/4																							
8	SW 1/4 of NW 1/4																							
9	SE 1/4 of NW 1/4																							
10																								
11	NE 1/4 of SW 1/4																							
12	NW 1/4 of SW 1/4																							
13	SW 1/4 of SW 1/4																							
14	SE 1/4 of SW 1/4																							
15																								
16	NE 1/4 of SE 1/4																							
17	NW 1/4 of SE 1/4																							
18	SW 1/4 of SE 1/4																							
19	SE 1/4 of SE 1/4																							
20																								

Grand Total 3364580

237598 85953 323346 49803 24977 236486 32239 24408 44880 74211

SOLD FOR TAXES	VALUATIONS BY SCHOOL DISTRICTS AS EQUALIZED BY DEPARTMENT OF TAXATION						Tax Including State Homestead	State Tax on Non-Homestead	SPECIAL TAXES	SPECIAL TAXES	TOTAL TAXES	PAID	WHEN PAID	Number of Receipt	March Settlement 1963	June Settlement 1963	Penalty	November Settlement 1963	Penalty	Collections to First Monday in January 1964	Penalty	Delinquent on First Monday in January 1964	Total Delinquent Tax and Penalty	REMARKS
	District No.	District No.	District No.	District No.	District No.	District No.																		
	Rate	Rate	Rate	Rate	Rate	Rate																		
	Mills	Mills	Mills	Mills	Mills	Mills																		
1																								
2																								
3																								
4																								
5																								
6																								
7																								
8																								
9																								
10																								
11																								
12																								
13																								
14																								
15																								
16																								
17																								
18																								
19																								
20																								

Grand Total
112789 126512 14502 = 49803
12420 11931 57 = 24408
35209 38443 559 = 74211

na483 14964
a.483 9,330.00
a.116 10,396.04

17,875.68 20858 20,084.26