

Assessment Book

FOR THE YEAR

1935

TOWNSHIP OF MAY

Cass County

MINNESOTA

FREE PRESS COMPANY

PRINTERS, LITHOGRAPHERS, STATIONERS AND BINDERS

MANKATO, MINNESOTA

OFFICE OF
COUNTY AUDITOR

CASS County, APR 26 1935.

To A. J. Hicks Assessor Town
of May in the County aforesaid.

According to the requirements of law, I hereby deliver to you the Real and Personal Property Assessment Book of the said Town for the year 1935, and I hereby direct you to assess all property and make return thereof to me as required by law prescribing your duties.

A form of return to be signed by you is appended to this book.

J. Peterson County Auditor.

Auditor's Office, Cass County, Minnesota

I, L. C. PETERSON, Auditor of Cass County, and State of Minnesota, do hereby certify that the following is a correct list of taxes levied on the Real and Personal Property in the Town of May in said County, for the year 1935.

Witness my hand and official seal this 6th day of Jan, 1936.
J. Peterson County Auditor.

Treasurer's Office, Cass County, Minnesota

Received this, the first Monday (being the 6th day) of January, A. D. 1936, of L. C. PETERSON, Auditor of Cass County, Minnesota, the Tax List of all taxable Real and Personal Property in the Town of May in said County, for the year A. D. 1935, as specified above, and amounting to Twelve thousand, three hundred, eighty eight and 1/100 DOLLARS.
W. T. Arkewitz County Treasurer.

Office of County Treasurer, Cass County, Minnesota

To L. C. PETERSON, County Auditor
January 4th, 1937

Sir: I herewith return to you the Tax List for the Town of May in said Cass County, for the year 1935, heretofore received from you. I certify that I have compared the same with the duplicate receipts in your office, and have written opposite the amount of each tax so receipted the words "One-Fourth Paid," "One-Half Paid," "Three-Fourths Paid" or "Paid in Full," as the case may be, and the number of my receipt given in discharge of said tax, and each tract or lot of Real Property against which the taxes remain unpaid is delinquent for said year.

W. T. Arkewitz County Treasurer.

Auditor's Office, Cass County, Minnesota

I hereby certify that on the first Monday in January, 1937, I received of W. T. ARKEWITZ, County Treasurer, the Tax List of the Town of May in said County of Cass, for the year 1935, and that I have compared the said list with the statements receipted for by said Treasurer, which are on file in my office and that each tract or lot of real property therein against which the taxes, or any part thereof, remains unpaid are delinquent for said year.

(SEAL) _____ County Auditor.

TABULAR SCHEDULE OF VALUATIONS

LEVIED IN THE Town OF May

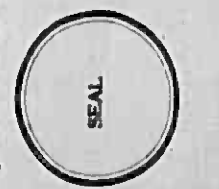
RATES AND TAXES

COUNTY OF CASS, STATE OF MINNESOTA

No. of School Dist.	VALUATION BY SCHOOL DISTRICTS							RATE OF STATE TAXES					RATE OF COUNTY TAXES					RATE OF TOWN TAXES									
	Money & Credits Dollars	Total Acres	Average Value Per Acre Dollars	Value of Lands other than Town Lots Including Structures Dollars	Value of Town and City Lots Including Structures Dollars	Personal Property except Money and Credits Dollars	Total Value of all Taxable Property except Money and Credits Dollars	State Rev. Mills	State Sch'l Mills	Tchr. Ret. Mills	Minn. Gen'l Hosp. Mills	Total Rate of State Taxes Mills	Co. Rev. Mills	Co. R&B Mills	Co. Poor Mills	Bond & Int. Mills	Sinking Mills	Total Rate of Co. Taxes Mills	Town Rev. Mills	Twn. R&B Mills	Town 1 Mill Drag Mills	Twn. State Loan Mills	Total Rate of Town Taxes Mills				
1 23 6.27				9616 66094 21983		2301 13133 4898	11917 1208 123 26 48 14.05					11.17	5.58	13.53	13.94			44.23	2.	4.24	1.			7.24			
TOTAL	2047			97693		7033	118025																				

RATE OF SCHOOL TAXES					TAXES LEVIED				SUMMARY OF ALL TAXES		
Sch'l Loc'l Mill	Sch'l Sp'l Mills	Sch'l State Loan Mills	Total Rate of Sch'l Taxes Mills	Total Rate of all Taxes Mills	Local 1 Mill	Special	State Loan	Total School Tax	FUNDS	Rate	Amounts
1	2.15	20.89	23.04	116.50	11.92	41446	24895	67533	State Revenue		142574
1	9.11	22.89	32.00	115.71	7922	72176	165505	245604	State School		14517
1	27	1230	7.11	112.93	2688	85803	33063	140666	Teachers Ins. and Ret.		3069
1	54	1230	7.11	139.93		19212			Minn. Gen'l Hospital		5265
									County Revenue		131835
									County Road and Bridge		65858
									County Poor		159659
									Bond and Interest		164645
									Sinking		
									Town Revenue		23605
									Town Road & Bridge		50042
									Town 1 Mill Drag		11803
									Town State Loan		
									by check No. 11		11051
									School Local, 1 Mill		11813
									School Special		199425
									School State Loan		273463
									School Deficiency		19112
									Money and Credits		614
									TOTAL		1238800

Total Number of Acres
 State of Minnesota, ss. I. D. C. PETERSON, Auditor of said County and State aforesaid, do hereby certify that the foregoing is a true and correct schedule, showing the valuation of all the taxable property in the Town of May in said County, the several rates of taxation and totals of the several Tax Funds levied thereon for the year A. D. 1935.
 Witness my hand and official seal this 31st day of June, A. D. 1935.
 I. Peterson
 County Auditor.



Collection of Taxes of 1935, Low of May, Cass County, Minnesota

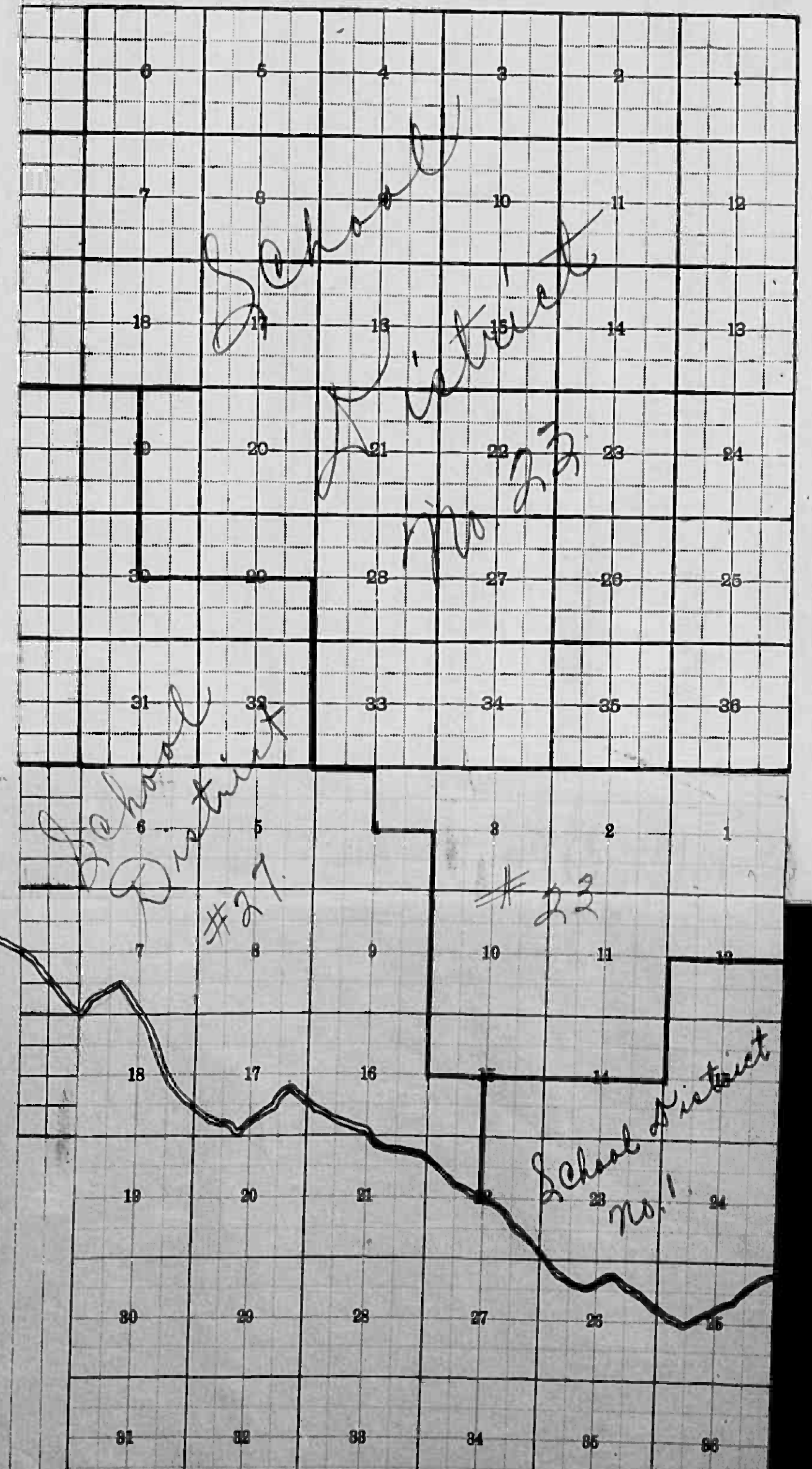
FUNDS	March Settlement 1935	June Settlement 1935	October Settlement 1935	Forfeited Sale 1935	Amount Collected from Nov. 1935 to first Mon- day in Jan. 1936	TOTAL COLLECTED	BALANCE UNCOLLECTED
State Revenue	21481	35745	5231		8736		
State School	2187	5640	2569		889		
Teacher's Ins. & Ret. Fd.	462	769	543		188		
Minnesota Gen. Hosp.	854	1420	1004		349		
County Revenue	19862	33052	23331		8080		
County Road and Bridge	9922	16511	14655		4036		
County Poor	24059	40037	28260		9289		
County Bond & Int.	24806	41279	29138		10091		
Sinking							
Town Revenue	3556	5919	4178		1446		
Town Road and Bridge	7540	12545	8857		3069		
Town 1 Mill Drag	1778	2959	2088		723		
Town State Loan							
State Loan		1704	5865		260		
School Local, 1 Mill	1777	2959	2088		723		
School Special	46031	47557	34854		10514		
School State Loan	32235	56467	37425		13599		
School	4065	5254	3483		6251		

SCHOOL DISTRICT	March Settlement				June Settlement				October Settlement				Forfeited Settlement				Nov. to January				Total Collected	Balance Uncollected
	Local 1 Mill	Special	State Loan	Total	Local 1 Mill	Special	State Loan	Total	Local 1 Mill	Special	State Loan	Total	Local 1 Mill	Special	State Loan	Total	Local 1 Mill	Special	State Loan	Total		
School District No. 23	109499	6928	59339	22222	193011	15824	318598	59830	132617	20812	2701	41108	53049	29110	7164	16433						
" " "	11265	4323	4489	99	29019	2060	60159	70	27241	6656	94	1436	17620	360	997							
" " "	4065	5712	1970	3684	7392	35570	8935	437	49014	6036	2406		17650	6521	65	7406						
TOTALS	4065	1777	4031	32235	79108	29594	75576	60721	112237	20880	8845	42908	72051	4135	9924	836						

Handwritten notes:
 State Loan
 Deficiency
 1935
 1936

For Convenience of Auditor in Showing Boundaries of School Districts

Township 134 Range No. 21 and Part of 133-31 Mer. P. M.



Index to Sections

Summary	12388.00
Settlements	25
March	
June	
October	
Nov. & Dec.	
Grand settlement	196154
Under settlement	306817
Delinquents	222644
Relinquents	73737
	01
	7692
	431780
	12388.00
	12388.00

- " 20
- " 21
- " 22
- " 23
- " 24
- " 25
- " 26
- " 27
- " 28
- " 29
- " 30
- " 31
- " 32
- " 33
- " 34
- " 35
- " 36

Assessor's Return of Grain Received in or Handled by Elevators and Warehouses in the _____ of _____ County of _____, State of Minnesota.

For year preceding March 1st, 19_____

INCREASE OR DECREASE in Value of Property Heretofore Assessed, by the Erection or Destruction of Buildings or Structures Thereon

PLATTED Property Assessed at 40 Per Cent of True and Full Value. (Homesteads up to \$4000 True and Full Value 25 Per Cent.)

UNPLATTED Property Assessed at 33 1/3 Per Cent of True and Full Value. (Homesteads up to \$4000 True and Full Value 20 Per Cent.)

NAMES OF OWNERS	Bushels of Wheat	Bushels of Flax	Bushels of Barley	Bushels of Oats	Bushels of Rye	Bushels of Corn	Bushels of Buckwheat	Bushels of all Other Grain	Total No. of Bushels Wheat and Flax	* Tax at _____ Mill Per Bushel		Total No. of Bushels of all Other Grain	* Tax of _____ Mill Per Bushel		* Total Tax		REMARKS
										Dollars	Cts.		Dollars	Cts.	Dollars	Cts.	

NAMES OF PROPERTY OWNERS	DESCRIPTION	Sec. or Lot	Town or Block	Rng.	True and Full Value of Structures worth more than \$100 each Dollars	KIND OF STRUCTURES	Assessed Value of Additional Structures Dollars	Reduction of Assessed Value on Account of Loss occasioned by fire, flood or otherwise Dollars
--------------------------	-------------	-------------	---------------	------	--	--------------------	---	---

<i>Paul Lockwood</i>	<i>N.W. 1/4 Sec 16 - 133 - 31</i>				<i>16 133 31</i>	<i>300</i>	<i>House</i>	<i>60</i>
----------------------	-----------------------------------	--	--	--	------------------	------------	--------------	-----------

*NOTE—ASSESSORS WILL NOT FILL OUT THIS COLUMN

Assessment Roll and Tax List of Unplatted Real Property in the Town of May, Unplatted Real Estate Assessed at 33 1/3 Per Cent of True and Full Value; Attached Machinery at 33 1/3 Per Cent of True and Full Value. Homesteads, up to true and full value of \$4000, assessable at 20 Per Cent, Class 3B; Remainder at 33 1/3 Per Cent, Class 3.

Cass County, Minnesota, for Taxes for the Year 1935.

Table with columns: IN WHOSE NAME ASSESSED, TO WHOM TRANSFERRED, DESCRIPTION OF PROPERTY, ASSESSORS VALUATION, EQUALIZED VALUES, VALUATIONS BY SCHOOL DISTRICTS AS EQUALIZED BY TAX COMMISSION, SPECIAL TAXES, TOTAL TAXES, PAID, WHEN PAID, Number of Receipt, Marsh Settlement 1936, June Settlement 1936, Penalty, November Settlement 1936, Penalty, Collections to First Monday in January 1937, Delinquent on First Monday in January 1937, Penalty, Total Delinquent Tax and Penalty, REMARKS. Rows include property owners like Jays C. Andrus, George C. Green, Ralph C. Hill, and Geo. C. Green.

Assessment Roll and Tax List of Unplatted Real Property in the Town of May

Unplatted Real Estate Assessed at 33 1/3 Per Cent of True and Full Value; Attached Machinery at 33 1/3 Per Cent of True and Full Value. Homesteads, up to true and full value of \$4000, assessable at 20 Per Cent, Class 66; Remainder at 33 1/3 Per Cent, Class 3.

Cass County, Minnesota, for Taxes for the Year 1935.

IN WHOSE NAME ASSESSED	TO WHOM TRANSFERRED	DESCRIPTION OF PROPERTY				No. School District	Indicate Homestead	ASSESSOR'S VALUATION					EQUALIZED VALUES			SOLD FOR TAXES	
		SUBDIVISION	Sec. of Lot	Town or Block	Range			Number of Acres of Land	True and Full Value of Land Exclusive of Structures and Improvements	Structures and Improvements True and Full Value of Buildings and other Structures	True and Full Value of Machinery Permanently Attached to Real Estate	Total True and Full Value of Land Including All Structures Improvements and Machinery	Assessed Value of Homestead up to \$4000 at 20 Per Cent Class 66	Assessed Value of Remainder at 33 1/3 per cent Class 3	Total Assessed Value of Land Including All Structures Improvements and Machinery		Total Assessed Value As Equalized by the Board of Review
Carl Dehmel		NE 1/4 of NE 1/4	7	134	31	70	73										SOLD FOR TAXES
		NW 1/4 of NE 1/4				40											SOLD FOR TAXES
Matt Loftis		SW 1/4 of NE 1/4				40											SOLD FOR TAXES
"		SE 1/4 of NE 1/4				40											SOLD FOR TAXES
						40											
Anna Elmer		NE 1/4 of NW 1/4				40											
"		NW 1/4 of NW 1/4				40											
Jacob Wendt		SW 1/4 of NW 1/4				40											
"		SE 1/4 of NW 1/4				40											
						40											
Delbert Newkirk		NE 1/4 of SW 1/4				40											
"		NW 1/4 of SW 1/4				40											
A. H. Mack		SW 1/4 of SW 1/4				40											
"		SE 1/4 of SW 1/4				40											
						40											
Jas. Francisco & John Schmit		NE 1/4 of SE 1/4				40											
Delbert Newkirk		NW 1/4 of SE 1/4				40											
A. H. Mack		SW 1/4 of SE 1/4				40											
Jas. Francisco & John Schmit		SE 1/4 of SE 1/4				40											
						40											
						640											

VALUATIONS BY SCHOOL DISTRICTS AS EQUALIZED BY TAX COMMISSION				Total General Tax	SPECIAL TAXES				TOTAL TAXES	PAID	WHEN PAID	Number of Receipt	March Settlement 1936	June Settlement 1936	Penalty	November Settlement 1936	Penalty	Collections to First Monday in January 1937	Delinquent on First Monday in January 1937	Penalty	Total Delinquent Tax and Penalty	REMARKS	
District No. 73	District No.	District No.	District No.		Ditch No.	Ditch No.	Ditch No.	Ditch No.															
Rate	Rate	Rate	Rate																				
Mills	Mills	Mills	Mills																				
Dollars	Dollars	Dollars	Dollars	\$	cts.	\$	cts.	\$	cts.	\$	cts.	\$	cts.	\$	cts.	\$	cts.	\$	cts.	\$	cts.	\$	cts.
168				1682																			
112				1091																			
60				579																			
60				579																			
91				878																			
117				1081																			
101				1631																			
169				1699																			
106				176																			
101				975																			
101				975																			
127				1226																			
66				637																			
101				975																			
101				975																			
78				758																			
101				975																			
175				16651																			

Rated to

975

1024

1699

1665

1959 69

334

1665

1950

2446

975

1067

2446

975

1067

2446

975

1067

2446

975

1067

2446

975

1067

2446

975

1067

2446

975

1067

2446

975

1067

2446

975

1067

2446

975

1067

2446

975

1067

2446

975

1067

2446

975

1067

2446

975

1067

2446

975

1067

2446

975

1067

2446

975

1067

2446

975

1067

2446

975

1067

2446

975

1067

2446

975

1067

2446

975

1067

2446

975

1067

2446

975

1067

2446

975

1067

2446

975

1067

2446

975

1067

2446

975

1067

2446

975

1067

2446

975

1067

2446

975

1067

2446

975

1067

2446

975

1067

2446

975

1067

2446

975

1067

2446

975

1067

2446

975

1067

2446

975

1067

2446

975

1067

2446

975

1067

2446

975

1067

2446

975

1067

2446

975

1067

2446

975

1067

2446

975

1067

2446

975

1067

2446

975

1067

2446

975

1067

2446

Assessment Roll and Tax List of Unplatted Real Property in the Town of May, Minnesota, for Taxes for the Year 1935.

Cass County, Minnesota, for Taxes for the Year 1935.

Table with columns: IN WHOSE NAME ASSESSED, TO WHOM TRANSFERRED, DESCRIPTION OF PROPERTY, ASSESSOR'S VALUATION, EQUALIZED VALUES, VALUATIONS BY SCHOOL DISTRICTS AS EQUALIZED BY TAX COMMISSION, SPECIAL TAXES, PAID, WHEN PAID, Number of Receipt, March Settlement 1936, June Settlement 1936, November Settlement 1936, Collections to First Monday in January 1937, Delinquent on First Monday in January 1937, Total Delinquent Tax and Penalty, REMARKS.

