

Assessment & Tax List - 1959

Loon Lake





NAME OF OWNER

TABULAR SCHEDULE OF VALUATIONS,  
LEVIED IN THE Town OF Loon Lake

School District No.	VALUATION BY SCHOOL DISTRICTS				RATE OF COUNTY TAXES										RATE OF TOWN TAXES										RATE OF									
	Agric- cultural Lands	Non-Agric- cultural Lands	Personal Property	Total Value of all Property except Money and Credits	Rev.	R. & B.	Wel- fare	Bonds and Int.	Total Rate of County Tax	Rev.	R. & B.	Drag Tax	State Loan	Total Rate of Town Tax	Local	Spe- cial	State Loan	Defi- cien- cy	Tui- tion	Trans- porta- tion	Total Rate of all Taxes													
185	1497			1497	11.8	10	35.68	15.61	95	5.5	79	129.04	8.22	3.							33.													
186	16,877	2149	5248	24,386	N.H. 6.22																													
	18,374	2149	5360	25,883	14.32																													
Assessed Value	Rural 12,636	All Other	Personal Property	Total 12,636																														
Non-Homestead	7887		5360	13,247																														
Total	20,523		5360	25,883																														
		C. 2 1205	4155																															

RATES AND TAXES

COUNTY OF CASS, STATE OF MINNESOTA

SCHOOL TAXES										TAXES LEVIED									
LOCAL 1 MILL AND SPECIAL SCHOOL TAXES BY DISTRICTS										ALL OTHER TAXES									
Local 1 Mill	Special	State Loan	Deficiency	Tuition	Transportation	Total School Taxes	FUNDS	Rate	Amounts										
25	50	69.25	57.67	.92	.6	148	State - Non-Homestead		75.00										
25	50	69.25	57.67	.92	.6	148	State - Homestead		199.88										
25	50	69.16		2.42	2.01	2.42	County Revenue,		923.52										
50	50	69.16		2.42	2.01	2.42	County Road and Bridge,		388.25										
							County Welfare,		1603.49										
							Bonds and Interest		51.77										
							Co. Nurse		51.77										
							Rt B Bldg.		51.77										
							Town Revenue,		207.06										
							Town Road and Bridge,		569.43										
							Town Drag,												
							Town State Loan.												
							Here		77.65										
									854.14										
							School Local 1 Mill,												
							School Special,		703.59										
							School State Loan,												
							Deficiency		1696.89										
							Tuition		56.33										
							Transportation												
							C.O.		60.39										
							PERA		49.91										
							Bt Int.		22.16										
							Bldg.		59.01										
									2678.28										

County: Rt B Med. Prog. 12941  
C. E. R. A. 14986  
Agric. Assn. 1294  
Transp. 2899  
3340.00

Total Taxes Real Estate 5675.06  
Pers Prop. 1472.24  
Total 7147.30

Total Number of Acres 8587.15  
Total Levy \$ 7147.30  
I, L. C. Pelton  
Auditor of said County and State of said, do hereby certify that the foregoing is a true and correct Schedule, showing the valuation of all the taxable property, in the Town of Loon Lake, in said County, the several rates of Taxation and Totals of the several Tax Funds levied thereon for the year A. D. 1957.  
Witness my hand and official seal, this 14th day of January A. D. 1957.  
County Auditor  
By Helen Bilbo, Deputy

SEAL



Assessment Roll and Tax List of Real Property in the Town of Loon Lake

Cass County, Minnesota, for Taxes for the Year 1959.

Table with columns: IN WHOSE NAME ASSESSED, TO WHOM TRANSFERRED, DESCRIPTION OF PROPERTY, TRUE AND FULL VALUATIONS, VALUATIONS BY SCHOOL DISTRICTS AS EQUALIZED BY DEPARTMENT OF TAXATION, TAXES, PAID, WHEN PAID, etc.











Assessment Roll and Tax List of Real Property in the Town of Spoon Lake

Form SCD MILLER-DAVIS CO., MINNEAPOLIS

Indicate Type of Property: R-Residential, C-Commercial, I-Industrial, U-Utility, F-Farm, L-Lakeshore, T-Timber, M-Mineral

Cass County, Minnesota, for Taxes for the Year 1959.

Table with columns for Assessee Name, Property Description, Valuations (True and Full, Assessed, Final Equalized), School District, and Tax Details (SOLD FOR TAXES, VALUATIONS BY SCHOOL DISTRICTS, SPECIAL TAXES, TOTAL TAXES, PAID, WHEN PAID, etc.). Includes handwritten entries for Ben C. & Agnes J. Anderson, Maggie Mayford, Orris S. & Lida A. Mortenson, Ted Niskanen, etc.

Assessment Roll and Tax List of Real Property in the Town of Loon Lake

Form 5CD MILLER-DAVIS CO., MINNEAPOLIS

\* Indicate Type of Property: R-Residential, C-Commercial, I-Industrial, U-Utility, F-Farm, L-Lakeshore, T-Timber, M-Mineral

Cass County, Minnesota, for Taxes for the Year 1959.

Main data table with columns: IN WHOSE NAME ASSESSED, TO WHOM TRANSFERRED, DESCRIPTION OF PROPERTY, TRUE AND FULL VALUATIONS, ASSESSED VALUATIONS, VALUATIONS BY SCHOOL DISTRICTS AS EQUALIZED BY DEPARTMENT OF TAXATION, SOLD FOR TAXES, PAID, WHEN PAID, Number of Receipt, March Settlement 1960, June Settlement 1960, Penalty, November Settlement 1960, Penalty, Collections to First Monday in January 1961, Penalty, Delinquent on First Monday in January 1961, Total Delinquent Tax and Penalty, REMARKS.

Loe Olds
Wilhelma Miller
Loe Olds
Hilltop Land Co.
Leora B. Miller
"
"
Wilhelma Miller
"
Ernest A. & Colata E. Bush
State of Minnesota
The Northwest Paper Co
State of Minnesota
State of Minnesota
State of Minnesota
State of Minnesota
Leo M. & Helen H. Haines

Table with columns: SUBDIVISION, Sec. of Lot, Town or Block, Rng., Number of Acres of Land, No. School District, Indicate Homestead Tax or No, Indicate Agricultural Tax or No, Indicate Type of Property, LAND Exclusive of Structures and Improvements, BUILDINGS and Other Structures, MACHINERY Permanently Attached to Real Estate, TOTAL True and Full Value, RURAL, ALL OTHER, MACHINERY Permanently Attached to Real Estate, TOTAL ASSESSED VALUE, Total Assessed Value as Equalized by the Board of Review, FINAL EQUALIZED VALUE.

Table with columns: SOLD FOR TAXES, VALUATIONS BY SCHOOL DISTRICTS AS EQUALIZED BY DEPARTMENT OF TAXATION, TAX including State Homestead, State Tax on Non-Homestead, SPECIAL TAXES, TOTAL TAXES, PAID, WHEN PAID, Number of Receipt, March Settlement 1960, June Settlement 1960, Penalty, November Settlement 1960, Penalty, Collections to First Monday in January 1961, Penalty, Delinquent on First Monday in January 1961, Total Delinquent Tax and Penalty, REMARKS.

Less Advance 381.50
27.50
354.00

596
330
926
131 = 576
= 461
1057
25108
-3880
28988
288
24276

32412
2902

3962

14964

Assessment Roll and Tax List of Real Property in the Town of Iron Lake

Form SCD MILLER-DAVIS CO., MINNEAPOLIS

Indicate Type of Property: R-Residential, C-Commercial, I-Industrial, U-Utility, F-Farm, L-Lakeshore, T-Timber, M-Mineral

Table with columns: IN WHOSE NAME ASSESSED, TO WHOM TRANSFERRED, DESCRIPTION OF PROPERTY, TRUE AND FULL VALUATIONS, ASSESSED VALUATIONS, and FINAL EQUALIZED VALUE.

Cass County, Minnesota, for Taxes for the Year 1959.

Table with columns: SOLD FOR TAXES, VALUATIONS BY SCHOOL DISTRICTS AS EQUALIZED BY DEPARTMENT OF TAXATION, Tax including State Homestead, SPECIAL TAXES, TOTAL TAXES, PAID, WHEN PAID, Number of Receipt, March Settlement, June Settlement, November Settlement, Penalty, Collections to First Monday in January 1961, Delinquent on First Monday in January 1961, Total Delinquent Tax and Penalty, REMARKS.

Assessment Roll and Tax List of Real Property in the Town of Loon Lake, Cass County, Minnesota, for Taxes for the Year 1959.

Form 500 MILLER-DAVIS CO., MINNEAPOLIS

\* Indicate Type of Property: R-Residential, C-Commercial, I-Industrial, U-Utility, F-Farm, L-Lakeshore, T-Timber, M-Mineral

Cass County, Minnesota, for Taxes for the Year 1959.

Table with columns: IN WHOSE NAME ASSESSED, TO WHOM TRANSFERRED, DESCRIPTION OF PROPERTY, TRUE AND FULL VALUATIONS, ASSESSED VALUATIONS, VALUATIONS BY SCHOOL DISTRICTS AS EQUALIZED BY DEPARTMENT OF TAXATION, TAXES, PAID, WHEN PAID, Number of Receipt, March Settlement 1960, June Settlement 1960, November Settlement 1960, Collections to First Monday in January 1961, Delinquent on First Monday in January 1961, Total Delinquent Tax and Penalty, REMARKS.

Assessment Roll and Tax List of Real Property in the Town of Loon Lake

Form SCD MILLER-DAVIS CO., MINNEAPOLIS

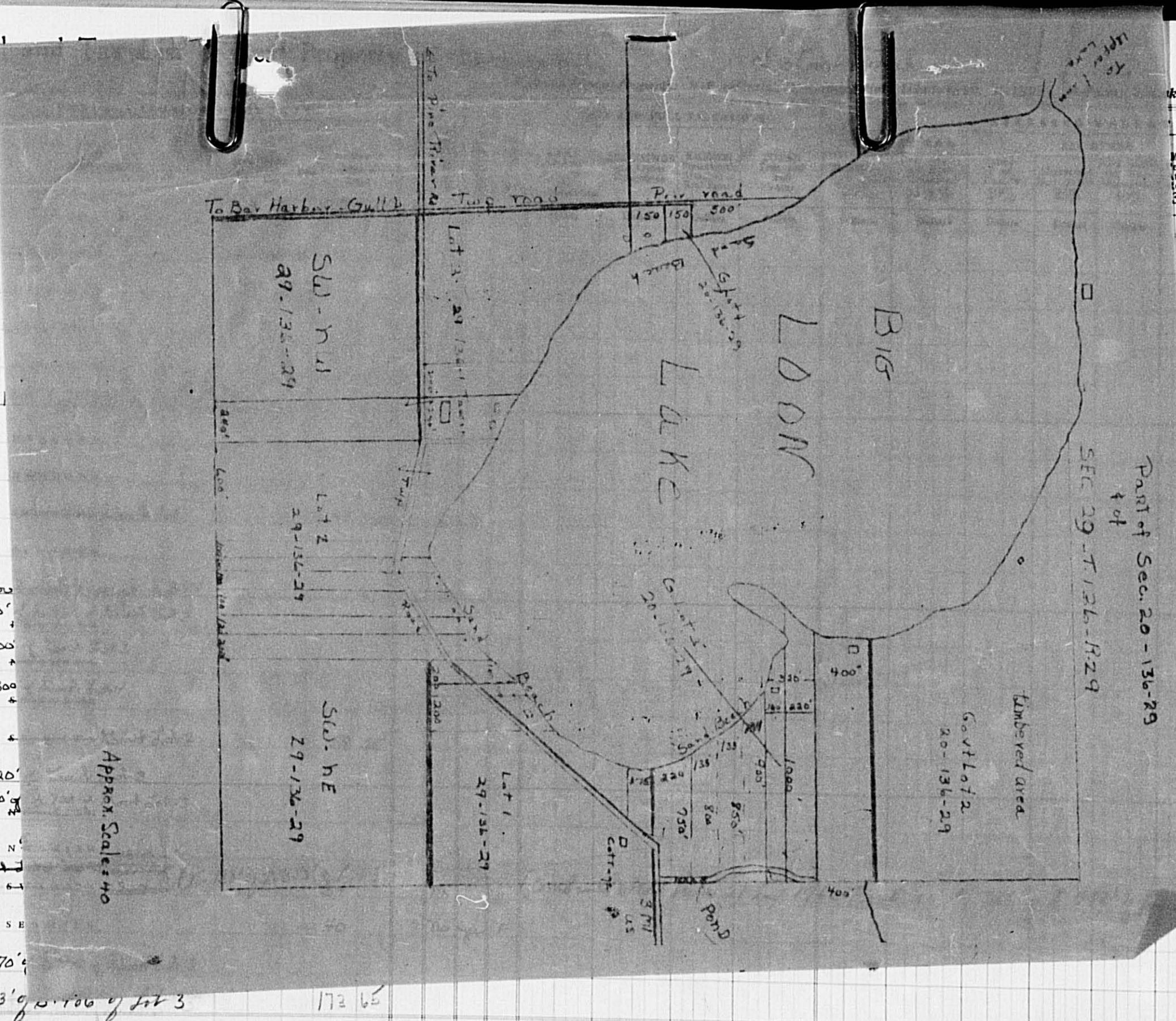
\* Indicate Type of Property: R-Residential, C-Commercial, I-Industrial, U-Utility, F-Farm, L-Lakeshore, T-Timber, M-Mineral

Table with columns: IN WHOSE NAME ASSESSED, TO WHOM TRANSFERRED, DESCRIPTION OF PROPERTY, TRUE AND FULL VALUATIONS, ASSESSED VALUATIONS, FINAL EQUALIZED VALUE. Includes entries for Elsie S. Baasmussen, Greuben & Esther Ann Hartkopf, Glenn C. & Anna Lang, Gerald B. & Alice Magdalena Warren, L. M. Mathison & Myrtle J. Mabbott, Nathaniel B. & Mae L. Clark.

Cass County, Minnesota, for Taxes for the Year 1959.

Table with columns: SOLD FOR TAXES, VALUATIONS BY SCHOOL DISTRICTS AS EQUALIZED BY DEPARTMENT OF TAXATION, SPECIAL TAXES, TOTAL TAXES, PAID, WHEN PAID, Number of Receipt, March Settlement 1960, June Settlement 1960, Penalty, November Settlement 1960, Collections to First Monday in January 1961, Delinquent on First Monday in January 1961, Total Delinquent Tax and Penalty, REMARKS. Includes handwritten notes and calculations.

IN WHOSE NAME ASSESSED	TO WHOM TRANSFERRED	
N. W. Paper Co	AUXILIARY FOREST No. 46	1
" "	AUXILIARY FOREST No. 46	2
" "	AUXILIARY FOREST No. 46	3
" "	AUXILIARY FOREST No. 46	4
Oswald + Myrtle L Sandin		5
State of Minnesota		6
State of Minnesota		7
Charles E. + Violet A. Siegler		8
The Northwest Paper Co	AUXILIARY FOREST No. 46	9
Robert J. + Marjorie Rae O'Sonnell		10
Dewey Anderson	W. B. R. Mason	11
Dorothy E. Brier		12
Stone O. + Violet A. Penning		13
Marvin V. Baker		14
Carl + Natalija Stumbras + Divas Stumbras		15
Clement V. + Cora L. Langin		16
N. W. Paper Co	AUXILIARY FOREST No. 46	17
Marion + Marga Kump		18
William R. Mason		19
" "		20
Dennis + Marga Kump		



Shore, T-Timber, M-Mineral

VALUATIONS	TOTAL ASSESSED VALUE	Total Assessed Value as Equalized by the Board of Review	FINAL EQUALIZED VALUE
Dollars	Dollars	Dollars	Dollars

VALUATIONS BY SCHOOL DISTRICTS AS EQUALIZED BY DEPARTMENT OF TAXATION	Tax including State Homestead	State Tax on Non-Homestead	SPECIAL TAXES	TOTAL TAXES	PAID	WHEN PAID	Number of Receipt	March Settlement 1960	June Settlement 1960	Penalty	November Settlement 1960	Penalty	Collections to First Monday in January 1961	Penalty	Delinquent on First Monday in January 1961	Total Delinquent Tax and Penalty	REMARKS	
Dollars	\$ cts	\$ cts	\$ cts	\$ cts		Month Day Year		\$ cts	\$ cts	\$ cts	\$ cts	\$ cts	\$ cts	\$ cts	\$ cts	\$ cts		
1																		
2																		
3																		
4																		
5																		
6																		1476
7																		
8		108			3198	68												
9																		
10		98			2902	60												
11																		
12																		
13		119			3464	72												
14		161			4768	100												
15																		
16																		
17																		
18		359			10632	224												
19		116			3146	72												
20																		
					24964													
					3146													
					28110	596												

Cass County, Minnesota, for Taxes for the Year 1959.

VALUATIONS BY SCHOOL DISTRICTS AS EQUALIZED BY DEPARTMENT OF TAXATION	Tax including State Homestead	State Tax on Non-Homestead	SPECIAL TAXES	TOTAL TAXES	PAID	WHEN PAID	Number of Receipt	March Settlement 1960	June Settlement 1960	Penalty	November Settlement 1960	Penalty	Collections to First Monday in January 1961	Penalty	Delinquent on First Monday in January 1961	Total Delinquent Tax and Penalty	REMARKS	
Dollars	\$ cts	\$ cts	\$ cts	\$ cts		Month Day Year		\$ cts	\$ cts	\$ cts	\$ cts	\$ cts	\$ cts	\$ cts	\$ cts	\$ cts		
1																		
2																		
3																		
4																		
5																		
6																		1476
7																		
8		108			3198	68												
9																		
10		98			2902	60												
11																		
12																		
13		119			3464	72												
14		161			4768	100												
15																		
16																		
17																		
18		359			10632	224												
19		116			3146	72												
20																		
					24964													
					3146													
					28110	596												

PAID IN FULL MAY 31 1960 9415 3266

PAID IN FULL MAY 31 1960 9414 1481 14814

PAID IN FULL MAY 5 1960 1223/ 3536

Balance Paid OCT 31 1959 17224

Part Paid MAY 31 1960 9442 1546 8884

Balance Paid OCT 20 1960 15076 6784

Part Paid OCT 10 1960 16571 6334

Part Paid MAY 31 1960 10492 10754 17

Part Paid MAY 31 1960 9438 242

Part Paid MAY 31 1960 9438 846

Part Paid MAY 31 1960 12574 7260

Part Paid MAY 31 1960 12458 1966

Part Paid MAY 25 1960 12224 1844

Part Paid MAY 15 1960 8538

PAID IN FULL MAY 31 1960 9433 3218

Part Paid MAY 31 1960 9433 21575 7131

16511

Part share, Landon share

Share share 14596

8041





Assessment Roll and Tax List of Real Property in the Town of Loon Lake

Indicate Type of Property: R-Residential, C-Commercial, I-Industrial, U-Utility, F-Farm, L-Lakeshore, T-Timber, M-Mineral

Cass County, Minnesota, for Taxes for the Year 1959.

Table with columns: IN WHOSE NAME ASSESSED, TO WHOM TRANSFERRED, DESCRIPTION OF PROPERTY, TRUE AND FULL VALUATIONS, ASSESSED VALUATIONS, VALUATIONS BY SCHOOL DISTRICTS AS EQUALIZED BY DEPARTMENT OF TAXATION, SOLD FOR TAXES, PAID, WHEN PAID, Number of Receipt, March Settlement 1960, June Settlement 1960, November Settlement 1960, Collections to First Monday in January 1961, Delinquent on First Monday in January 1961, Total Delinquent Tax and Penalty, REMARKS.



Assessment Roll and Tax List of Real Property in the Town of Loon Lake

Cass County, Minnesota, for Taxes for the Year 1959.

Form SCD 1958-59 DEPT. OF REVENUE, MINN. INDICATE TYPE OF PROPERTY: R-Residential, C-Commercial, I-Industrial, U-Utility, F-Farm, L-Lakeshore, T-Timber, M-Mineral

Table with columns: IN WHOSE NAME ASSESSED, TO WHOM TRANSFERRED, DESCRIPTION OF PROPERTY, TRUE AND FULL VALUATIONS, ASSESSED VALUATIONS, VALUATIONS BY SCHOOL DISTRICTS AS EQUALIZED BY DEPARTMENT OF TAXATION, TAXES, PAID, WHEN PAID, Number of Receipt, March Settlement 1960, June Settlement 1960, Penalty, November Settlement 1960, Penalty, Collections to First Monday in January 1961, Penalty, Delinquent on First Monday in January 1961, Total Delinquent Tax and Penalty, REMARKS.



Assessment Roll and Tax List of Real Property in the Town of Spoon Lake

Indicate Type of Property: R-Residential, C-Commercial, I-Industrial, U-Utility, F-Farm, L-Lakeshore, T-Timber, M-Mineral

Form 503 MILLER-DAVIS CO., MINNEAPOLIS

Table with columns: IN WHOSE NAME ASSESSED, TO WHOM TRANSFERRED, DESCRIPTION OF PROPERTY, TRUE AND FULL VALUATIONS, ASSESSED VALUATIONS, and FINAL EQUALIZED VALUE.

Cass County, Minnesota, for Taxes for the Year 1959.

Table with columns: VALUATIONS BY SCHOOL DISTRICTS AS EQUALIZED BY DEPARTMENT OF TAXATION, Tax including State Homestead, State Tax on Non-Homestead, SPECIAL TAXES, TOTAL TAXES, PAID, WHEN PAID, Number of Receipt, March Settlement, June Settlement, November Settlement, Collections to First Monday in January 1961, Delinquent on First Monday in January 1961, Total Delinquent Tax and Penalty, and REMARKS.

Assessment Roll and Tax List of Real Property in the Town of Loon Lake

Indicate Type of Property: R-Residential, C-Commercial, I-Industrial, U-Utility, F-Farm, L-Lakeshore, T-Timber, M-Mineral

Form 50D MILLER-DAVIS CO., MINNEAPOLIS

Table with columns: IN WHOSE NAME ASSESSED, TO WHOM TRANSFERRED, DESCRIPTION OF PROPERTY, TRUE AND FULL VALUATIONS, ASSESSED VALUATIONS, FINAL EQUALIZED VALUE.

Cass County, Minnesota, for Taxes for the Year 1959.

Table with columns: VALUATIONS BY SCHOOL DISTRICTS AS EQUALIZED BY DEPARTMENT OF TAXATION, Tax including State Homestead, State Tax on Non-Homestead, SPECIAL TAXES, TOTAL TAXES, PAID, WHEN PAID, Number of Receipt, March Settlement, June Settlement, November Settlement, Collections to First Monday in January 1961, Delinquent on First Monday in January 1961, Total Delinquent Tax and Penalty, REMARKS.

Assessment Roll and Tax List of Real Property in the Town of Loun Lake, Cass County, Minnesota, for Taxes for the Year 1959.

Form 502 MILLER-DAVIS CO., MINNEAPOLIS

Indicate Type of Property: R-Residential, C-Commercial, I-Industrial, U-Utility, F-Farm, L-Lakeshore, T-Timber, M-Mineral

Table with columns: IN WHOSE NAME ASSESSED, TO WHOM TRANSFERRED, DESCRIPTION OF PROPERTY, TRUE AND FULL VALUATIONS, ASSESSED VALUATIONS, FINAL EQUALIZED VALUE.

Cass County, Minnesota, for Taxes for the Year 1959.

Table with columns: SOLD FOR TAXES, VALUATIONS BY SCHOOL DISTRICTS AS EQUALIZED BY DEPARTMENT OF TAXATION, SPECIAL TAXES, TOTAL TAXES, PAID, WHEN PAID, Number of Receipt, March Settlement 1960, June Settlement 1960, Penalty, November Settlement 1960, Penalty, Collections to First Monday in January 1961, Penalty, Delinquent on First Monday in January 1961, Total Delinquent Tax and Penalty, REMARKS.



Assessment Roll and Tax List of Real Property in the Town of Loon Lake

Form 5CD MILLER-DAVIS CO., MINNEAPOLIS

Indicate Type of Property: R-Residential, C-Commercial, I-Industrial, U-Utility, F-Farm, L-Lakeshore, T-Timber, M-Mineral

Table with columns: IN WHOSE NAME ASSESSED, TO WHOM TRANSFERRED, DESCRIPTION OF PROPERTY, TRUE AND FULL VALUATIONS, ASSESSED VALUATIONS, and FINAL EQUALIZED VALUE.

Cass County, Minnesota, for Taxes for the Year 1959.

Table with columns: SOLD FOR TAXES, VALUATIONS BY SCHOOL DISTRICTS AS EQUALIZED BY DEPARTMENT OF TAXATION, TAX INCLUDING STATE HOMESTEAD, SPECIAL TAXES, TOTAL TAXES, PAID, WHEN PAID, Number of Receipt, March Settlement 1960, June Settlement 1960, Penalty, November Settlement 1960, Collections to First Monday in January 1961, Delinquent on First Monday in January 1961, Total Delinquent Tax and Penalty, REMARKS.

