

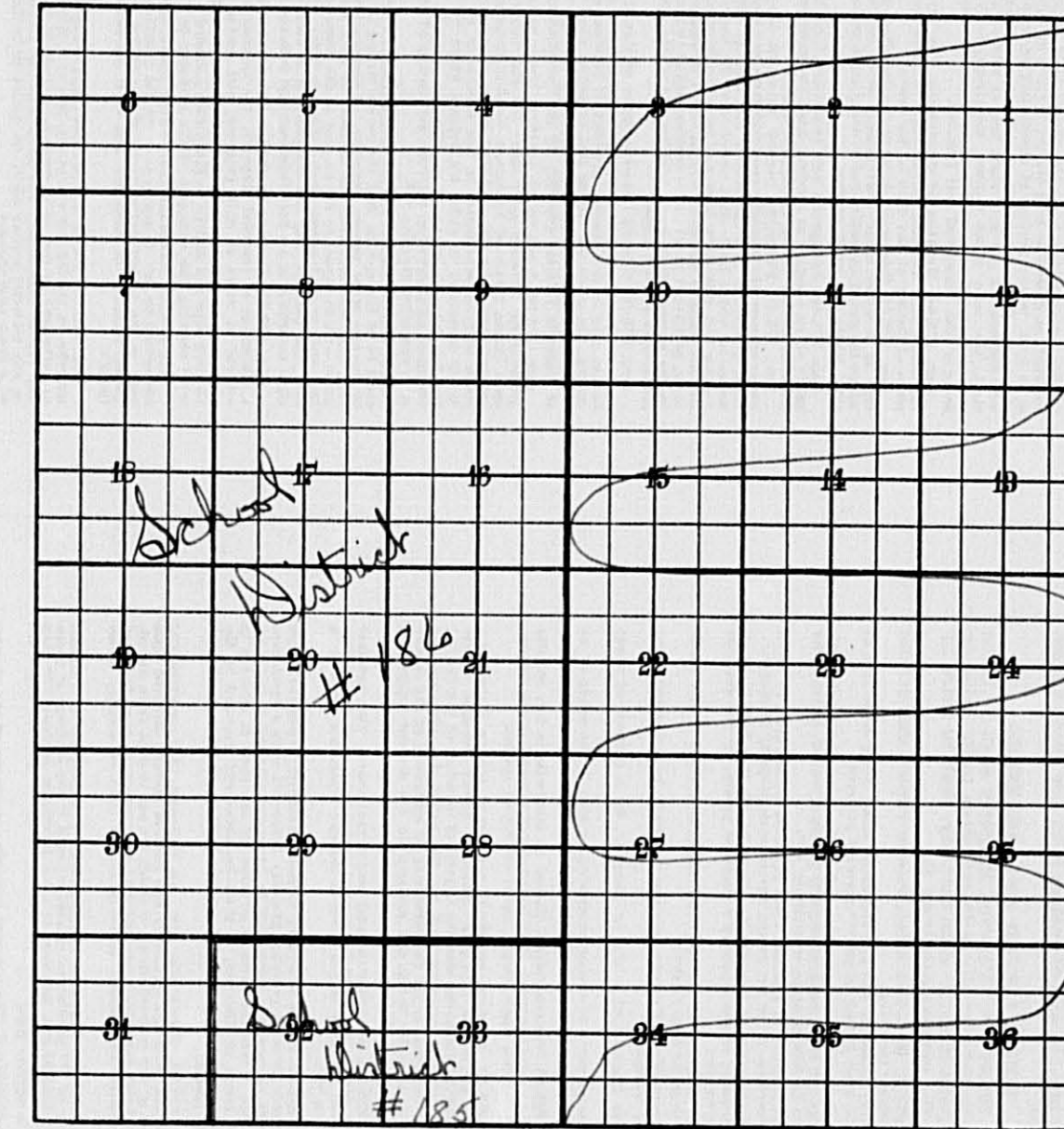
Assessment & Tax List - 1968
Loon Lake

INDEX TO SECTIONS

SECTION	PAGE
Sec. 1	
" 2	
" 3	
" 4	
" 5	
" 6	
" 7	
" 8	
" 9	
" 10	
" 11	
" 12	
" 13	
" 14	
" 15	
" 16	
" 17	
" 18	
" 19	
" 20	
" 21	
" 22	
" 23	
" 24	
" 25	
" 26	
" 27	
" 28	
" 29	
" 30	
" 31	
" 32	
" 33	
" 34	
" 35	
" 36	

For Convenience of Auditor in Showing Boundaries of School Districts

Township No. 136 Range No. 29 Mer. P. M.



* 22-50 new #185
* 30-53 new #186

Returns Showing Grain Received in or Handled by Elevators, Warehouses and Mills in the _____ of _____ in the _____
County of _____ for the Year Ending May 1, 1958.

NAMES OF OWNERS	ADDRESS	Bushels of Wheat	Bushels of Soy Beans	Bushels of Flax	Total No. of Bushels of Wheat, Soy Beans and Flax	★ Tax of 1/2 Mill per Bushel		Bushels of Corn	Bushels of Barley	Bushels of Rye	Bushels of Oats	Bushels of Buckwheat	Bushels of all Other Grains	Total No. Bushels Corn, Barley, Rye, Oats, Buckwheat and all Other Grains	★ Tax of 1/4 Mill Per Bushel		★ Total Tax		REMARKS		
						Dollars	Cts.								Dollars	Cts.	Dollars	Cts.			

Note ★ Assessors will not fill these Columns

Real Estate

SUMMARY OF TAX COLLECTION

Original Levy	- - - - -	\$ 6,207.84	
Additions	- - - - -	\$	
			\$ 6,207.84
Abatements	- - - - -	\$ 78.56	
			\$ 6,129.28

COLLECTIONS

March Settlement	- - - - -	\$ 1,051.36	
June Settlement	- - - - -	\$ 2,849.70	
November Settlement	- - - - -	\$ 1,337.92	
January Settlement	- - - - -	\$ 156.24	\$ 5,395.22
			\$
Over Collected	- - - - -	\$	
Under Collected	- - - - -	\$	
Delinquent	- - - - -	\$ 734.06	\$
Total	- - - - -		\$ 6,129.28

COLLECTIONS OF TAXES OF 1958

Town OF Loan Lake

CASS COUNTY, MINNESOTA

FUNDS	MARCH SETTLEMENT 1957	JUNE SETTLEMENT 1957	NOV. SETTLEMENT 1957	Amount Collected from Nov. 1957 to First Monday in Jan. 1958	REDUCTIONS	Total Reductions and Collected	BALANCE UNCOLLECTED	ADDITIONS	Total Uncollected to First Monday in January, 1958
State-Non-Homestead,	24 61	27 55	13 50	3 16					
State-Homestead,	24 61	66 70	2 1 80	3 69					
County Revenue,	123 23	333 98	159 23	18 49					
County Road and Bridge,	62 57	169 59	80 86	9 38					
County Welfare,	215 58	584 30	2 78 58	32 34					
County Bond and Interest,									
R. + B. Fed. Proj.	20 86	56 53	26 95	3 13					
Co. Nurse	8 34	22 62	10 78	1 26					
R. + B. Bldg.	8 34	22 62	10 78	1 26					
Town Revenue,	33 37	90 45	43 12	5 00					
Town Road and Bridge,	91 77	248 73	118 59	13 77					
Town Drag,	4 17	11 31	5 39	63					
Town State Loan,									
Fire	12 52	33 92	16 17	1 88					
School Local 1 Mill,	4 18	11 30	5 39	63					
School Special,	106 71	326 73	137 99	15 65					
School State Loan,									
Deficiency	21 33	570 46	276 78	32 47					
Tuition	9 11	28 85	6 22						
Transportation	6 04	16 40	7 82	91					
PERA	4 93	13 22	6 48	77					
C. O.	29 79	80 09	39 36	4 68					
Bldg.	29 79	80 09	39 36	4 67					
B. + U.	3 03	9 61	2 07						
PERA	14 39	39 00	18 60	2 16					
Agri. Assn	2 09	5 65	2 70	31					
	1051 36	2849 70	1337 92	156 24					

	SCHOOL DISTRICT NO.	LOCAL 1 MILL	SPECIAL	STATE LOAN B. + U.	Deficiency	Transp.	PERA	C. O.	Bldg.	Tuition	TOTALS
MARCH SETTLEMENT	186a	389	9713		20157	563	479	2906	2906		37113
	1867a	10	485		503	14	12	73	73		1170
	185a	19	473	303	473	27	02			911	2208
	Totals	418	10671	303	21133	604	493	2979	2979	911	40491
JUNE SETTLEMENT	186a	894	22362		46404	1297	1100	6690	6690		85437
	1867a	176	8814		9145	256	217	1319	1319		21246
	185a	60	1497	961	1497	87	05			2885	6992
	Totals	1130	32673	961	57046	1640	1322	8009	8009	2885	113675
NOVEMBER SETTLEMENT	186-a	513	12829		26623	744	631	3839	3839		49018
	186-7a	13	647		672	19	16	77	77		1561
	185-a	13	323	207	323	19	01			422	1508
	Totals	539	13799	207	27618	782	648	3936	3936	422	52897
NOVEMBER to JANUARY	186a	63	1565		3247	91	77	468	467		5978
	Totals	63	1565		3247	91	77	468	467		5978
ADDITIONS											
REDUCTIONS											
Totals											

Real Estate

Assessment Roll and Tax List of Real Property in the Town of Loon Lake

* Indicate Type of Property: R-Residential, C-Commercial, I-Industrial, U-Utility, F-Farm, L-Lakeshore, T-Timber, M-Mineral

Cass County, Minnesota, for Taxes for the Year 1958.

Table with columns: IN WHOSE NAME ASSESSED, TO WHOM TRANSFERRED, DESCRIPTION OF PROPERTY, TRUE AND FULL VALUATIONS, ASSESSED VALUATIONS, VALUATIONS BY SCHOOL DISTRICTS AS EQUALIZED BY DEPARTMENT OF TAXATION, SOLD FOR TAXES, PAID, WHEN PAID, March Settlement, June Settlement, November Settlement, Collections to First Monday in January 1960, Delinquent on First Monday in January 1960, Total Delinquent Tax and Penalty, REMARKS.

Assessment Roll and Tax List of Real Property in the Town of Lawn Lake

Indicate Type of Property: R-Residential, C-Commercial, I-Industrial, U-Utility, F-Farm, L-Lakeshore, T-Timber, M-Mineral

Cass County, Minnesota, for Taxes for the Year 1958.

Table with columns: IN WHOSE NAME ASSESSED, TO WHOM TRANSFERRED, DESCRIPTION OF PROPERTY, TRUE AND FULL VALUATIONS, ASSESSED VALUATIONS, VALUATIONS BY SCHOOL DISTRICTS AS EQUALIZED BY DEPARTMENT OF TAXATION, SOLD FOR TAXES, PAID, WHEN PAID, Number of Receipt, March Settlement 1959, June Settlement 1959, November Settlement 1959, Collections to First Monday in January 1960, Delinquent on First Monday in January 1960, Total Delinquent Tax and Penalty, REMARKS.

Real Estate

Assessment Roll and Tax List of Real Property in the Town of Loon Lake

Cass County, Minnesota, for Taxes for the Year 1958.

Indicate Type of Property: R-Residential, C-Commercial, I-Industrial, U-Utility, F-Farm, L-Lakeshore, T-Timber, M-Mineral

Table with columns: IN WHOSE NAME ASSESSED, TO WHOM TRANSFERRED, DESCRIPTION OF PROPERTY, TRUE AND FULL VALUATIONS, ASSESSED VALUATIONS, VALUATIONS BY SCHOOL DISTRICTS AS EQUALIZED BY DEPARTMENT OF TAXATION, TAXES, PAID, WHEN PAID, Number of Receipt, March Settlement, June Settlement, November Settlement, Collections to First Monday in January 1960, Delinquent on First Monday in January 1960, Total Delinquent Tax and Penalty, REMARKS.

Assessment Roll and Tax List of Real Property in the Town of Loun Lake

Cass County, Minnesota, for Taxes for the Year 1958.

Form 300 (REV. 1-15-58) MINN. STAT. ANN. § 260.01

Indicate Type of Property: R-Residential, C-Commercial, I-Industrial, U-Utility, F-Farm, L-Lakeshore, T-Timber, M-Mineral

Table with columns: IN WHOSE NAME ASSESSED, TO WHOM TRANSFERRED, DESCRIPTION OF PROPERTY, TRUE AND FULL VALUATIONS, ASSESSED VALUATIONS, VALUATIONS BY SCHOOL DISTRICTS AS EQUALIZED BY DEPARTMENT OF TAXATION, TAXES, PAID, WHEN PAID, Number of Receipt, March Settlement, June Settlement, November Settlement, Collections to First Monday in January, Delinquent on First Monday in January, Total Delinquent Tax and Penalty, REMARKS.

Assessment Roll and Tax List of Real Property in the Town of Loon Lake

Indicate Type of Property: R-Residential, C-Commercial, I-Industrial, U-Utility, F-Farm, L-Lakeshore, T-Timber, M-Mineral

Cass County, Minnesota, for Taxes for the Year 1958.

Table with columns: IN WHOSE NAME ASSESSED, TO WHOM TRANSFERRED, DESCRIPTION OF PROPERTY, TRUE AND FULL VALUATIONS, ASSESSED VALUATIONS, VALUATIONS BY SCHOOL DISTRICTS AS EQUALIZED BY DEPARTMENT OF TAXATION, SOLD FOR TAXES, PAID, WHEN PAID, SPECIAL TAXES, TOTAL TAXES, and REMARKS.

Assessment Roll and Tax List of Real Property in the Town of Loon Lake

Indicate Type of Property: R-Residential, C-Commercial, I-Industrial, U-Utility, F-Farm, L-Lakeshore, T-Timber, M-Mineral

Cass County, Minnesota, for Taxes for the Year 1958.

Table with columns: IN WHOSE NAME ASSESSED, TO WHOM TRANSFERRED, DESCRIPTION OF PROPERTY, TRUE AND FULL VALUATIONS, ASSESSED VALUATIONS, VALUATIONS BY SCHOOL DISTRICTS AS EQUALIZED BY DEPARTMENT OF TAXATION, TAXES, PAID, WHEN PAID, Number of Receipt, March Settlement 1959, June Settlement 1959, November Settlement 1959, Penalty, Collections to First Monday in January 1960, Delinquent on First Monday in January 1960, Total Delinquent Tax and Penalty, REMARKS.

Assessment Roll and Tax List of Real Property in the Town of Leon Lake, Minnesota

Cass County, Minnesota, for Taxes for the Year 1958.

Table with columns: IN WHOSE NAME ASSESSED, TO WHOM TRANSFERRED, DESCRIPTION OF PROPERTY, TRUE AND FULL VALUATIONS, ASSESSED VALUATIONS, VALUATIONS BY SCHOOL DISTRICTS AS EQUALIZED BY DEPARTMENT OF TAXATION, SOLD FOR TAXES, PAID, WHEN PAID, SPECIAL TAXES, TOTAL TAXES, and REMARKS.

Assessment Roll and Tax List of Real Property in the Town of Lyon Lake

Indicate Type of Property: R-Residential, C-Commercial, I-Industrial, U-Utility, F-Farm, L-Lakeshore, T-Timber, M-Mineral

Table with columns: IN WHOSE NAME ASSESSED, TO WHOM TRANSFERRED, DESCRIPTION OF PROPERTY, TRUE AND FULL VALUATIONS, ASSESSED VALUATIONS, and FINAL EQUALIZED VALUE. Includes entries for Elsie S. Rasmussen, Paulsen & Esther Ann Hartkopf, Glenn C & Anna Lang, etc.

Cass County, Minnesota, for Taxes for the Year 1958.

Table with columns: SOLD FOR TAXES, VALUATIONS BY SCHOOL DISTRICTS AS EQUALIZED BY DEPARTMENT OF TAXATION, Tax including State Homestead, State Tax on Non-Homestead, SPECIAL TAXES, TOTAL TAXES, PAID, WHEN PAID, Number of Receipt, March Settlement 1959, June Settlement 1959, November Settlement 1959, Penalty, Collections to First Monday in January 1960, Delinquent on First Monday in January 1960, Total Delinquent Tax and Penalty, REMARKS. Includes entries for 1-20 with tax amounts and payment dates.

Assessment Roll and Tax List of Real Property in the Town of Loon Lake

Cass County, Minnesota, for Taxes for the Year 1958.

Indicate Type of Property: R-Residential, C-Commercial, I-Industrial, U-Utility, F-Farm, L-Lakeshore, T-Timber, M-Mineral

Table with columns: IN WHOSE NAME ASSESSED, TO WHOM TRANSFERRED, DESCRIPTION OF PROPERTY, TRUE AND FULL VALUATIONS, ASSESSED VALUATIONS, VALUATIONS BY SCHOOL DISTRICTS AS EQUALIZED BY DEPARTMENT OF TAXATION, TAXES, PAID, WHEN PAID, etc.

Assessment Roll and Tax List of Real Property in the Town of Loun Lake

Indicate Type of Property: R-Residential, C-Commercial, I-Industrial, U-Utility, F-Farm, L-Lakeshore, T-Timber, M-Mineral

Cass County, Minnesota, for Taxes for the Year 1958.

Table with columns: IN WHOSE NAME ASSESSED, TO WHOM TRANSFERRED, DESCRIPTION OF PROPERTY, TRUE AND FULL VALUATIONS, ASSESSED VALUATIONS, VALUATIONS BY SCHOOL DISTRICTS AS EQUALIZED BY DEPARTMENT OF TAXATION, SOLD FOR TAXES, SPECIAL TAXES, TOTAL TAXES, PAID, WHEN PAID, Number of Receipt, March Settlement 1959, June Settlement 1959, November Settlement 1959, Penalty, Collections to First Monday in January 1960, Delinquent on First Monday in January 1960, Total Delinquent Tax and Penalty, REMARKS.

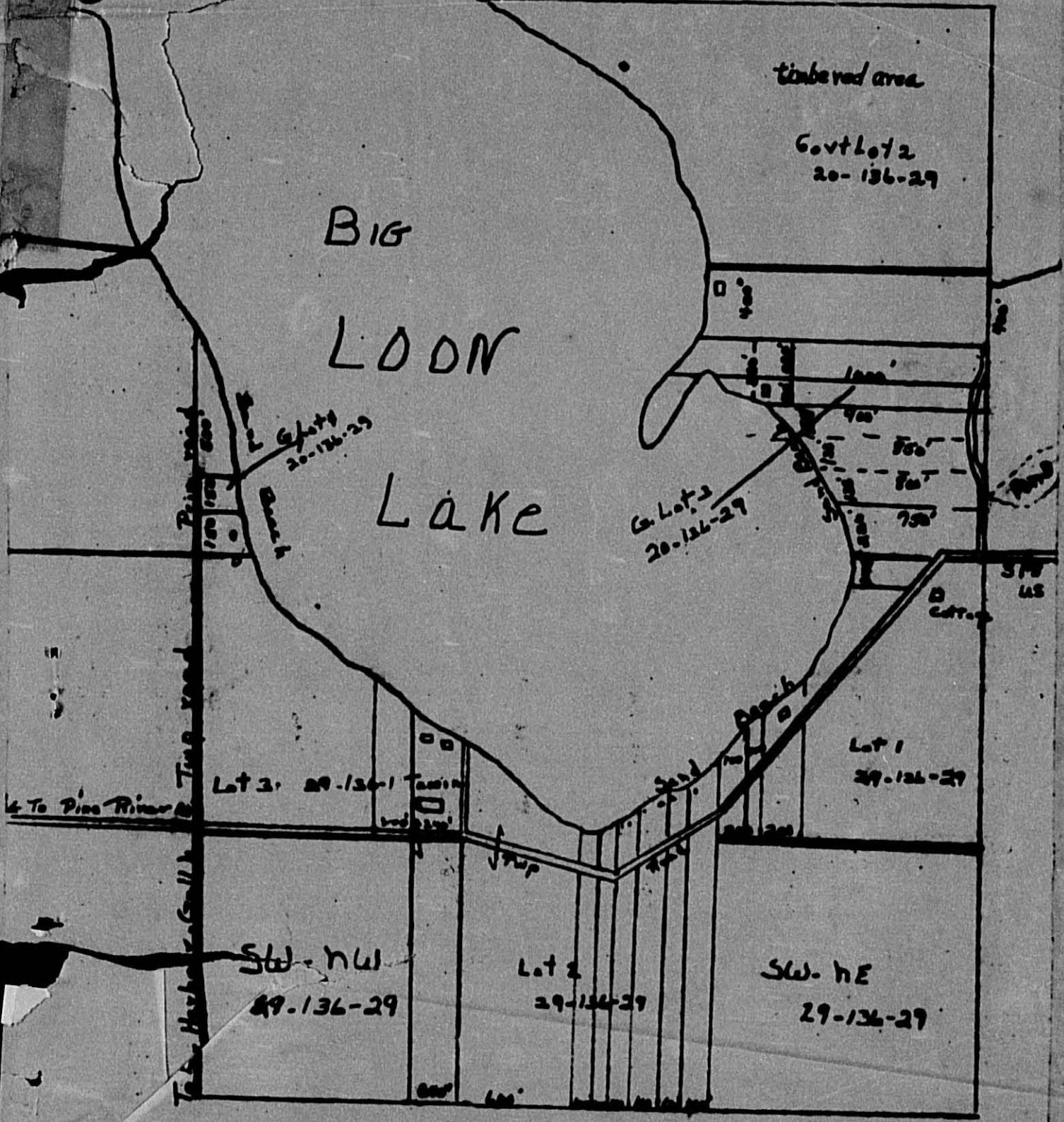
Assessment Roll and Tax List of Real Property in the Town of Lone Lake

Cass County, Minnesota, for Taxes for the Year 1958.

* Indicate Type of Property: R-Residential, C-Commercial, I-Industrial, U-Utility, F-Farm, L-Lake & Shore, T-Timber, M-Mineral

Table with columns: IN WHOSE NAME ASSESSED, TO WHOM TRANSFERRED, DESCRIPTION OF PROPERTY, TRUE AND FULL VALUATIONS, ASSESSED VALUATIONS, VALUATIONS BY SCHOOL DISTRICTS AS EQUALIZED BY DEPARTMENT OF TAXATION, TAXES, PAID, WHEN PAID, Number of Receipt, March Settlement 1959, June Settlement 1959, November Settlement 1959, Collections to First Monday in January 1960, Delinquent on First Monday in January 1960, Total Delinquent Tax and Penalty, REMARKS.

Part of Sec. 20-136-29
+ of
SEC 29 - T. 126 - R. 29



Approx. Scale = 40

Assessment Roll and Tax List of Real Property in the Town of Loun Lake

Cass County, Minnesota, for Taxes for the Year 1958.

* Indicate Type of Property: R-Residential, C-Commercial, I-Industrial, U-Utility, F-Farm, L-Lakeshore, T-Timber, M-Mineral

Table with columns: IN WHOSE NAME ASSESSED, TO WHOM TRANSFERRED, DESCRIPTION OF PROPERTY, TRUE AND FULL VALUATIONS, ASSESSED VALUATIONS, VALUATIONS BY SCHOOL DISTRICTS AS EQUALIZED BY DEPARTMENT OF TAXATION, TAXES, PAID, WHEN PAID, etc.

Assessment Roll and Tax List of Real Property in the Town of Lone Lake

Indicate Type of Property: R-Residential, C-Commercial, I-Industrial, U-Utility, F-Farm, L-Lakeshore, T-Timber, M-Mineral

Cass County, Minnesota, for Taxes for the Year 1958.

Table with columns: IN WHOSE NAME ASSESSED, TO WHOM TRANSFERRED, DESCRIPTION OF PROPERTY, TRUE AND FULL VALUATIONS, ASSESSED VALUATIONS, VALUATIONS BY SCHOOL DISTRICTS AS EQUALIZED BY DEPARTMENT OF TAXATION, TAXES, PAID, WHEN PAID, Number of Receipt, March Settlement, June Settlement, November Settlement, Collections to First Monday in January 1960, Delinquent on First Monday in January 1960, Total Delinquent Tax and Penalty, REMARKS.

Assessment Roll and Tax List of Real Property in the Town of Lion Lake

Indicate Type of Property: R-Residential, C-Commercial, I-Industrial, U-Utility, F-Farm, L-Lakeshore, T-Timber, M-Mineral

Cass County, Minnesota, for Taxes for the Year 1958.

Table with columns: IN WHOSE NAME ASSESSED, TO WHOM TRANSFERRED, DESCRIPTION OF PROPERTY, TRUE AND FULL VALUATIONS, ASSESSED VALUATIONS, VALUATIONS BY SCHOOL DISTRICTS AS EQUALIZED BY DEPARTMENT OF TAXATION, TAXES, PAID, WHEN PAID, Number of Receipt, March Settlement 1959, June Settlement 1959, Penalty, November Settlement 1959, Penalty, Collections to First Monday in January 1960, Penalty, Delinquent on First Monday in January 1960, Total Delinquent Tax and Penalty, REMARKS.

Assessment Roll and Tax List of Real Property in the Town of Leam Lake

* Indicate Type of Property: R-Residential, C-Commercial, I-Industrial, U-Utility, F-Farm, L-Lakeshore, T-Timber, M-Mineral

Table with columns: IN WHOSE NAME ASSESSED, TO WHOM TRANSFERRED, DESCRIPTION OF PROPERTY, TRUE AND FULL VALUATIONS, ASSESSED VALUATIONS, FINAL EQUALIZED VALUE. Includes entries for State of Minnesota, Ross B. & Gertrude Gish, Oscar J. Nelson, Mildred & Frank Whitney, etc.

Cass County, Minnesota, for Taxes for the Year 1958.

Table with columns: SOLD FOR TAXES, VALUATIONS BY SCHOOL DISTRICTS AS EQUALIZED BY DEPARTMENT OF TAXATION, TAX INCLUDING STATE HOMESTEAD, SPECIAL TAXES, TOTAL TAXES, PAID, WHEN PAID, Number of Receipt, March Settlement 1959, June Settlement 1959, Penalty, November Settlement 1959, Collections to First Monday in January 1960, Delinquent on First Monday in January 1960, Total Delinquent Tax and Penalty, REMARKS. Includes handwritten notes like 'Forfeited 10-5-59' and 'Balance Paid NOV 2 1959'.

Assessment Roll and Tax List of Real Property in the Town of Loon Lake

Cass County, Minnesota, for Taxes for the Year 1958.

Form 307 (1957) MINN. STAT. ANN. § 263.01, SUBCHAPTER 263.01

Main table with columns: IN WHOSE NAME ASSESSED, TO WHOM TRANSFERRED, DESCRIPTION OF PROPERTY, TRUE AND FULL VALUATIONS, ASSESSED VALUATIONS, VALUATIONS BY SCHOOL DISTRICTS AS EQUALIZED BY DEPARTMENT OF TAXATION, SOLD FOR TAXES, PAID, WHEN PAID, Number of Receipt, March Settlement 1959, June Settlement 1959, November Settlement 1959, Collections to First Monday in January 1960, Delinquent on First Monday in January 1960, Total Delinquent Tax and Penalty, REMARKS.

John Newman
John + Martha Schully
Arthur C + Josephine M. Richa
Edith Marie Lease Sobrick & Edith M + Claude C. Lease & Margaret M. Erickson
The Northwest Paper Co
Edith Marie Lease Sobrick & Edith M. + Claude C. Lease & John Ed. + Martha Schully
John + Martha Schully

376.00
2443 615 3058 338 456 194

1 1250 1250 PAID IN FULL APR 3 1959 6977
2 956 956 2
3 1064 1064 3
4 3988 98 4086 4 PAID IN FULL APR 3 1959 6978
5
6 1914 46 1960 6 Balance Paid AUG 31 1959 12717 PAID MAY 2 9 1959 11360 980 980
7 3482 86 3568 7 PAID IN FULL MAY 6 1959 7248 3568
8 1408 34 1442 8 PAID IN FULL MAY 6 1959 7248 1442
9
10 1330 32 1362 10 PAID IN FULL MAY 20 1959 7954 1362
11
12
13
14
15
16 3536 11360 1820 17 16
17 1010 1010 17
18
19 1170 1170 19
20 21108 296 21404 14508 2696 4200

8566
956
1064
8565
8553
8579
8579
7321
8553
1010
1170
4200

Assessment Roll and Tax List of Real Property in the Town of Loom Lake

Indicate Type of Property: R-Residential, C-Commercial, I-Industrial, U-Utility, F-Farm, L-Lakeshore, T-Timber, M-Mineral

Cass County, Minnesota, for Taxes for the Year 1958.

Form 507

Main table with columns: IN WHOSE NAME ASSESSED, TO WHOM TRANSFERRED, DESCRIPTION OF PROPERTY, TRUE AND FULL VALUATIONS, ASSESSED VALUATIONS, VALUATIONS BY SCHOOL DISTRICTS AS EQUALIZED BY DEPARTMENT OF TAXATION, SOLD FOR TAXES, PAID, WHEN PAID, Number of Receipt, March Settlement 1959, June Settlement 1959, November Settlement 1959, Collections to First Monday in January 1960, Delinquent on First Monday in January 1960, Total Delinquent Tax and Penalty, REMARKS.

Grand Totals

Grand Totals

T.B.

Grand Total 8,674.45

5121.20 5360.89 5174.89