

ASSESSMENT & TAX LIST - 1962
Loon Lake

SUMMARY OF TAX COLLECTION

Original Levy	- - - - -	\$ 8405.96	
Additions	- - - - -	\$ _____	
Abatements	- - - - -	\$ _____	
			\$ 8405.96

COLLECTIONS

March Settlement	- - - - -	\$ 1624.55	
June Settlement	- - - - -	\$ 4098.16	
November Settlement	- - - - -	\$ 1870.73	
January Settlement	- - - - -	\$ 192.92	\$ 7786.36
Over Collected	- - - - -	\$ _____	
Under Collected	- - - - -	\$ _____	
Delinquent	- - - - -	\$ 619.60	\$ _____
Total	- - - - -		\$ 8405.96

COLLECTIONS OF TAXES OF 1962

Town OF Iron Lake

CASS COUNTY, MINNESOTA

FUNDS	MARCH SETTLEMENT 19.63	JUNE SETTLEMENT 19.63	NOV. SETTLEMENT 19.63	Amount Collected from Nov. 19.62 to First Monday in Jan. 19.63	REDUCTIONS	Total Reductions and Collected	BALANCE UNCOLLECTED	ADDITIONS	Total Uncollected to First Monday in January, 19.63
State-Non-Homestead,	4751	5702	2744	486					
State-Homestead,	4965	12282	5199	595					
County Revenue,	19686	47412	21688	2432					
County Road and Bridge,	12277	29564	13525	1517					
County Welfare,	30532	73536	33638	3773					
County Bond and Interest,	8391	20210	9245	1037					
PERA	3247	7822	3577	401					
Co. Misc	559	1345	616	67					
C. H. Bldg	1228	2956	1352	152					
Town Revenue,	6138	14784	6763	759					
Town Road and Bridge,	13504	32524	14878	1669					
Town State Loan,									
fee	1842	4436	2029	728					
School Local 1 Mill,									
School Special,	15267	39621	19618	1603					
School State Loan,									
Deficiency	27715	68019	31461	3021					
Tuition	1032	4253	1053						
Transportation C O	7969	19698	9089	860					
Bldg	56	230	57						
PERA	1018	2502	1155	111					
B + S	1155	2021	7800	441					
Co. Misc	227	547	250	28					
Ague Assn	307	739	338	37					
Transp	589	1419	649	73					
	162455	409816	187073	19292					

	School District No.	LOCAL 1 MILL.	SPECIAL	STATE LOAN	Deficiency	Indian	C. O	Bea	PERA	B. S	TOTALS
MARCH SETTLEMENT	185a		371		295	1032	167	56	12	175	2708
	186a #1		13076		24650		7014		905		45645
	186na #1		702		662		188		24		576
	186a #2		118		2108		600		77	780	4823
	Totals		15267		27715	1032	7969	56	1018	1155	54212
JUNE SETTLEMENT	185a		1524		216	4253	690	230	50	721	8684
	186a #1		2307		24144		6870		886		44707
	186na #1		762		719		205		26		1712
	186a #2		19967		37641		10710		1382	17492	87192
	186na #2		4561		4299		1223		158	1948	12239
Totals		39621		68019	4253	19698	230	2502	20211	154534	
NOVEMBER SETTLEMENT	185a		377		301	1053	172	57	12	179	2151
	186a #1		7036		3263		3774		486		24559
	186na #1		1588		1496		425		55		3564
	186a #2		6785		12789		3639		469	543	29625
	186na #2		3832		3612		1028		133	1678	10283
Totals		19618		31461	1053	9038	57	1155	7810	70182	
NOVEMBER to JANUARY	186a #2		505		951		271		35	441	2203
	186a #1		1098		2070		599		76		1733
	Totals		1603		3021		860		111	441	6036
ADDITIONS	School District No.										
Totals											
REDUCTIONS	School District No.										
Totals											

Roll State

L-1000000

Assessment Roll and Tax List of Real Property in the Town of Loon Lake, Cass County, Minnesota, for Taxes for the Year 1962.

Cass County, Minnesota, for Taxes for the Year 1962.

Form 501 MILLER-DAVIS CO. MINNEAPOLIS

* Indicate Type of Property: R-Residential, C-Commercial, I-Industrial, U-Utility, F-Farm, L-Lakeshore, T-Timber, M-Mineral

Main table with columns: IN WHOSE NAME ASSESSED, DESCRIPTION OF PROPERTY, TRUE AND FULL VALUATIONS, ASSESSED VALUATIONS, VALUATIONS BY SCHOOL DISTRICTS AS EQUALIZED BY DEPARTMENT OF TAXATION, TAXES, PAID, WHEN PAID, Number of Receipt, March Settlement 1963, June Settlement 1963, Penalty, November Settlement 1963, Penalty, Collections to First Monday in January 1964, Delinquent on First Monday in January 1964, Total Delinquent Tax and Penalty, REMARKS.

Real Estate

PERSONAL

Assessment Roll and Tax List of Real Property in the Town of Loon Lake

Cass County, Minnesota, for Taxes for the Year 1962.

* Indicate Type of Property: R-Residential, C-Commercial, I-Industrial, U-Utility, F-Farm, L-Lakeshore, T-Timber, M-Mineral

Form SCD MILLER-DAVIS CO., MINNEAPOLIS

Table with columns: IN WHOSE NAME ASSESSED, DESCRIPTION OF PROPERTY, TRUE AND FULL VALUATIONS, ASSESSED VALUATIONS, VALUATIONS BY SCHOOL DISTRICTS AS EQUALIZED BY DEPARTMENT OF TAXATION, TAX INCLUDING STATE HOMESTEAD, SPECIAL TAXES, TOTAL TAXES, PAID, WHEN PAID, Number of Receipt, March Settlement 1963, June Settlement 1963, November Settlement 1963, Collections to First Monday in January 1964, Delinquent on First Monday in January 1964, Total Delinquent Tax and Penalty, REMARKS.

Assessment Roll and Tax List of Real Property in the Town of Loon Lake

* Indicate Type of Property: R-Residential, C-Commercial, I-Industrial, U-Utility, F-Farm, L-Lakeshore, T-Timber, M-Mineral

Cass County, Minnesota, for Taxes for the Year 1962.

Table with columns: IN WHOSE NAME ASSESSED, DESCRIPTION OF PROPERTY, TRUE AND FULL VALUATIONS, ASSESSED VALUATIONS, VALUATIONS BY SCHOOL DISTRICTS AS EQUALIZED BY DEPARTMENT OF TAXATION, TAX INCLUDING STATE HOMESTEAD, SPECIAL TAXES, TOTAL TAXES, PAID, WHEN PAID, Number of Receipt, March Settlement 1963, June Settlement 1963, Penalty, November Settlement 1963, Penalty, Collections to First Monday in January 1964, Delinquent on First Monday in January 1964, Total Delinquent Tax and Penalty, REMARKS.

Assessment Roll and Tax List of Real Property in the Town of Loon Lake

Form SCD MILLER-DAVIS CO., MINNEAPOLIS

* Indicate Type of Property: R-Residential, C-Commercial, I-Industrial, U-Utility, F-Farm, L-Lakeshore, T-Timber, M-Mineral

Table with columns: IN WHOSE NAME ASSESSED, DESCRIPTION OF PROPERTY, TRUE AND FULL VALUATIONS, ASSESSED VALUATIONS, and FINAL EQUALIZED VALUE. Includes handwritten entries for Emanuel & Lucretia Buschmann, Roy Hartwig, Victor and Lois Larson, Harry and Evelyn Hedges, and Sheo O. Schulberg.

Cass County, Minnesota, for Taxes for the Year 1962.

Table with columns: SOLD FOR TAXES, VALUATIONS BY SCHOOL DISTRICTS AS EQUALIZED BY DEPARTMENT OF TAXATION, Tax Including State Homestead, State Tax on Non-Homestead, SPECIAL TAXES, TOTAL TAXES, PAID, WHEN PAID, Number of Receipt, March Settlement 1961, June Settlement 1963, November Settlement 1963, Penalty, Collections to First Monday in January 1964, Delinquent on First Monday in January 1964, Total Delinquent Tax and Penalty, and REMARKS. Includes handwritten entries for various districts and tax amounts.

Assessment Roll and Tax List of Real Property in the Town of Loon Lake

* Indicate Type of Property: R-Residential, C-Commercial, I-Industrial, U-Utility, F-Farm, L-Lakeshore, T-Timber, M-Mineral

Cass County, Minnesota, for Taxes for the Year 1962.

Table with columns: IN WHOSE NAME ASSESSED, DESCRIPTION OF PROPERTY, TRUE AND FULL VALUATIONS, ASSESSED VALUATIONS, VALUATIONS BY SCHOOL DISTRICTS AS EQUALIZED BY DEPARTMENT OF TAXATION, TAXES, PAID, WHEN PAID, Number of Receipt, March Settlement 1963, June Settlement 1963, November Settlement 1963, Penalty, Collections to First Monday in January 1964, Delinquent on First Monday in January 1964, Total Delinquent Tax and Penalty, REMARKS.

Assessment Roll and Tax List of Real Property in the Town of Loon Lake

* Indicate Type of Property: R-Residential, C-Commercial, I-Industrial, U-Utility, F-Farm, L-Lakeshore, T-Timber, M-Mineral

Cass County, Minnesota, for Taxes for the Year 1962.

Table with columns: IN WHOSE NAME ASSESSED, DESCRIPTION OF PROPERTY, TRUE AND FULL VALUATIONS, ASSESSED VALUATIONS, VALUATIONS BY SCHOOL DISTRICTS AS EQUALIZED BY DEPARTMENT OF TAXATION, TAXES, PAID, WHEN PAID, Number of Receipt, March Settlement 1963, June Settlement 1963, Penalty, November Settlement 1963, Penalty, Collections to First Monday in January 1964, Penalty, Delinquent on First Monday in January 1964, Total Delinquent Tax and Penalty, REMARKS.

Assessment Roll and Tax List of Real Property in the Town of Loon Lake

* Indicate Type of Property: R-Residential, C-Commercial, I-Industrial, U-Utility, F-Farm, L-Lakeshore, T-Timber, M-Mineral

Form 302-MILLER-DAVIS CO., MINNEAPOLIS

Table with columns: IN WHOSE NAME ASSESSED, SUBDIVISION, TRUE AND FULL VALUATIONS (LAND, BUILDINGS, MACHINERY, TOTAL), ASSESSED VALUATIONS (RURAL, ALL OTHER, MACHINERY, Seasonal and Recreational Cabins, TOTAL ASSESSED VALUE), FINAL EQUALIZED VALUE.

#2 #2 A NA

Cass County, Minnesota, for Taxes for the Year 1962.

Table with columns: SOLD FOR TAXES, VALUATIONS BY SCHOOL DISTRICTS AS EQUALIZED BY DEPARTMENT OF TAXATION, Tax Including State Homestead, State Tax on Non-Homestead, SPECIAL TAXES, TOTAL TAXES, PAID, WHEN PAID, Number of Receipt, March Settlement 1961, June Settlement 1961, November Settlement 1961, Collections to First Monday in January 1964, Delinquent on First Monday in January 1964, Total Delinquent Tax and Penalty, REMARKS.

Assessment Roll and Tax List of Real Property in the Town of Loon Lake

Cass County, Minnesota, for Taxes for the Year 1962.

Table with columns: IN WHOSE NAME ASSESSED, DESCRIPTION OF PROPERTY, TRUE AND FULL VALUATIONS, ASSESSED VALUATIONS, VALUATIONS BY SCHOOL DISTRICTS AS EQUALIZED BY DEPARTMENT OF TAXATION, TAX INCLUDING STATE HOMESTEAD, SPECIAL TAXES, TOTAL TAXES, PAID, WHEN PAID, Number of Receipt, March Settlement, June Settlement, November Settlement, Collections to First Monday in January 1964, Delinquent on First Monday in January 1964, Total Delinquent Tax and Penalty, REMARKS.

PART OF SEC. 20-136-29
+ OF SEC. 29-136-29

TO UPPER
LOON LAKE

BIG
LOON
LAKE

TIMBERED AREA

GOV'T LOT 2
20-136-29

PRICE

13171-2
-940'

NASON 2111-A
NASON 1000' 13172-20

LANGIN 13171-1a
900'

SANDIN 13171-B

RUMPE 13171-E
500'

RUMPE 13171-F
700'

STUMBRIS 13171-G
1000'

GOV'T LOT 3
20-136-29

POND

3 mi
W.B.
371
COTTAGE

PRILL ROAD
500'

TWP. ROAD
150' 100'

GOV'T LOT 4
20-136-29

LOT 3-29-136-29

TAYLOR

SAND BEACH
100'

LOT 1
29-136-29

TO FIVE RIVER RD.

TO GRS. HANSON - SULL

TWP. ROAD

SW 1/4 - NW 1/4
29-136-29

LOT 2
29-136-29

SW 1/4 - NE 1/4
29-136-29

250' 600' 100' 100' 100' 100'

Tomczak

\$24.60 $\frac{1}{2}$ Paid

79-11-10

Jensen

12.30 Paid in full

Deglmanns

12.30 Paid in full

Peterson

20.90 Paid in full. 67

line 5 Page 15

Loon Lake Imp.

Assessment Roll and Tax List of Real Property in the Town of Loon Lake

Form SCD MILLER-DAVIS CO., MINNEAPOLIS

* Indicate Type of Property: R-Residential, C-Commercial, I-Industrial, U-Utility, F-Farm, L-Lakeshore, T-Timber, M-Mineral

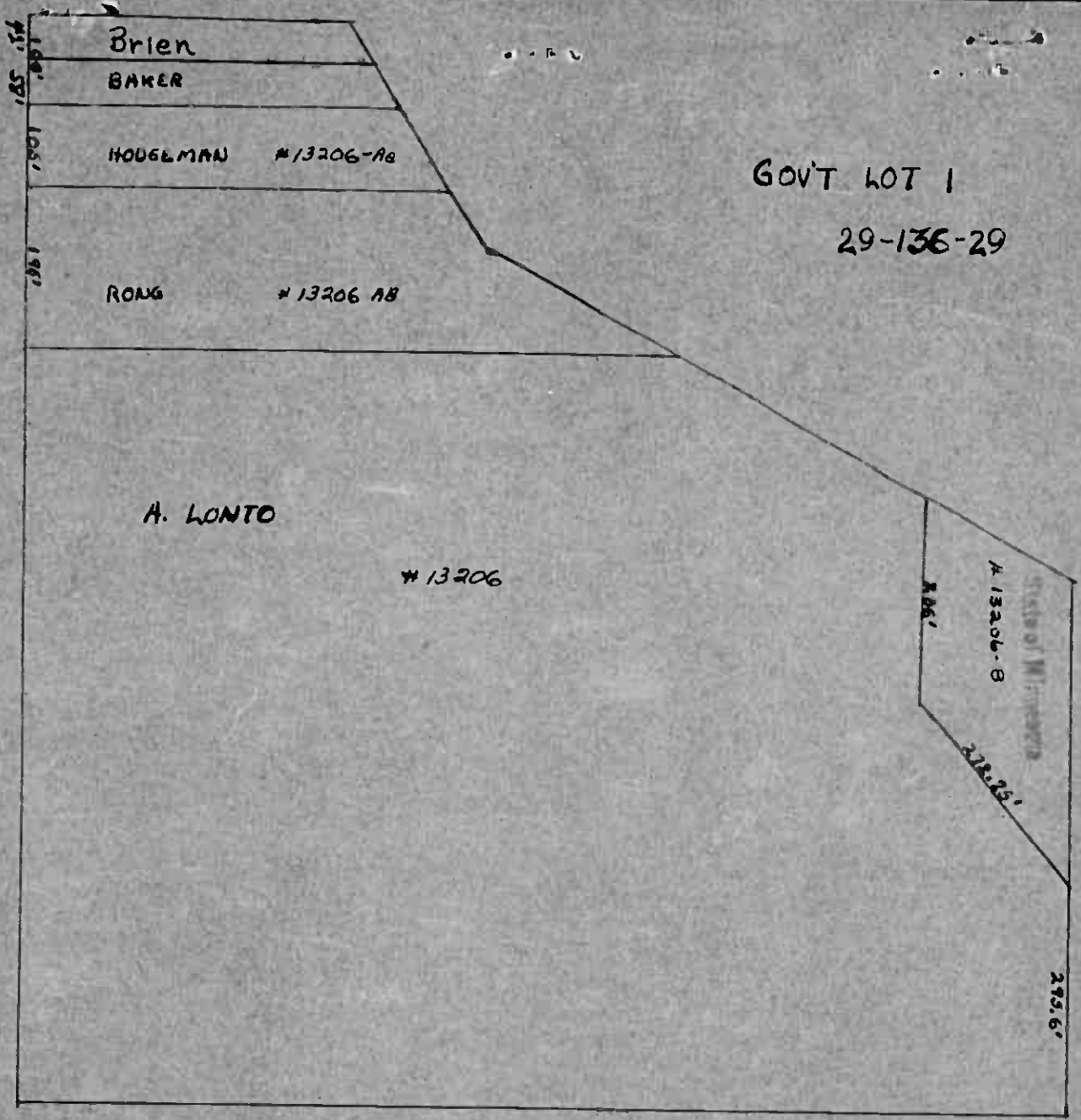
Cass County, Minnesota, for Taxes for the Year 1962.

Table with columns: IN WHOSE NAME ASSESSED, SUBDIVISION, Sec. of Lot, Town of Block, Rng., Acres, 100ths, No. School District, Indicate Home-Stead, Agri. or Recr., Indicate Type of Property, TRUE AND FULL VALUATIONS (LAND, BUILDINGS, MACHINERY, TOTAL), ASSESSED VALUATIONS (RURAL, ALL OTHER, MACHINERY, Seasonal and Recreational Cabins, TOTAL ASSESSED VALUE), Total Assessed Value as Equalized by the Board of Review, FINAL EQUALIZED VALUE.

Table with columns: SOLD FOR TAXES, VALUATIONS BY SCHOOL DISTRICTS AS EQUALIZED BY DEPARTMENT OF TAXATION (District No., Rate, Mills), Tax Including State Homestead, State Tax on Non-Homestead, SPECIAL TAXES, TOTAL TAXES, PAID, WHEN PAID, Number of Receipt, March Settlement 1963, June Settlement 1963, Penalty, November Settlement 1963, Penalty, Collections to First Monday in January 1964, Penalty, Delinquent on First Monday in January 1964, Total Delinquent Tax and Penalty, REMARKS.

Real Estate

Personal



Brien

BAKER

HOUGELMAN #13206-AB

RONG #13206 AB

A. LONTO

#13206

A. 13206-B

State of Minnesota

212.25'

275.6'

148'
105'
192'

GOV'T LOT 1

29-136-29

11



Assessment Roll and Tax List of Real Property in the Town of Loon Lake

Form SCD-MILLER-DAY CO., MINNEAPOLIS

* Indicate Type of Property: R-Residential, C-Commercial, I-Industrial, U-Utility, F-Farm, L-Lakeshore, T-Timber, M-Mineral

Table with columns: IN WHOSE NAME ASSESSED, DESCRIPTION OF PROPERTY, TRUE AND FULL VALUATIONS, ASSESSED VALUATIONS, and FINAL EQUALIZED VALUE. Includes entries for Ross B. Hish, Arnold V. and Martha E. Hall, Raymond and Geraldine Olson, and Edwin J. and Nora Springer.

Cass County, Minnesota, for Taxes for the Year 1962.

Table with columns: VALUATIONS BY SCHOOL DISTRICTS AS EQUALIZED BY DEPARTMENT OF TAXATION, Tax Including State Homestead, State Tax on Non-Homestead, SPECIAL TAXES, PAID, WHEN PAID, Number of Receipt, March Settlement 1963, June Settlement 1963, Penalty, November Settlement 1963, Collections to First Monday in January 1964, Delinquent on First Monday in January 1964, Total Delinquent Tax and Penalty, REMARKS. Includes handwritten notes like '#1 A' and '18424'.

Assessment Roll and Tax List of Real Property in the Town of Loon Lake, Cass County, Minnesota, for Taxes for the Year 1962.

* Indicate Type of Property: R-Residential, C-Commercial, I-Industrial, U-Utility, F-Farm, L-Lakeshore, T-Timber, M-Mineral

Form SC11 MILLER, DAVIS, CO., MINNEAPOLIS

Table with columns: IN WHOSE NAME ASSESSED, SUBDIVISION, No. School District, Indicate Home-Stead, Indicate Recreational, Indicate Type of Property, TRUE AND FULL VALUATIONS (LAND, BUILDINGS, MACHINERY, TOTAL), ASSESSED VALUATIONS (RURAL, ALL OTHER, MACHINERY, Seasonal and Recreational Cabins, TOTAL ASSESSED VALUE, Total Assessed Value as Equalized by the Board of Review, FINAL EQUALIZED VALUE).

Table with columns: SOLD FOR TAXES, VALUATIONS BY SCHOOL DISTRICTS AS EQUALIZED BY DEPARTMENT OF TAXATION (District No., Rate, Mills), Tax Including State Homestead, State Tax on Non-Homestead, SPECIAL TAXES, TOTAL TAXES, PAID, WHEN PAID (Month, Day, Year), Number of Receipt, March Settlement 1963, June Settlement 1963, November Settlement 1963, Penalty, Collections to First Monday in January 1964, Delinquent on First Monday in January 1964, Total Delinquent Tax and Penalty, REMARKS.

A 311.74 8.54 311.78

Cass County, Minnesota, for Taxes for the Year 1962.

