

1967 ASSESSMENT
1968 TAX LIST
Lima

or Ceased to be Homesteads

HOMESTEADS

Sec. or Lot	Town or Block	Range	Number of Acres of Land
			Acres 100s

SUMMARY OF TAX COLLECTION

Original Levy	- - - - -	\$ 4619.36	
Additions	- - - - -	\$	
			\$ 4619.36
Abatements	- - - - -	\$	
			\$ 4619.36

COLLECTIONS

March Settlement	- - - - -	\$ 159.96	
June Settlement	- - - - -	\$ 2627.12	
November Settlement	- - - - -	\$ 1387.56	
January Settlement	- - - - -	\$	\$ 4174.64
			\$
Over Collected	- - - - -	\$	
Under Collected	- - - - -	\$	
Delinquent	- - - - -	\$ 444.72	\$ 444.72
Total	- - - - -	\$ 4619.36	

Real Estate

Personal

TABULAR SCHEDULE OF VALUATIONS,

LEVIED IN THE Town OF Lima

RATES AND TAXES

COUNTY OF CASS, STATE OF MINNESOTA

School District No.	VALUATION BY SCHOOL DISTRICTS				RATE OF STATE TAXES		RATE OF COUNTY TAXES											RATE OF TOWN TAXES											RATE OF SPECIAL TAXES										
	Agri-cultural Lands	Non-Agri-cultural Lands	Personal Property	Total Value of all Property	Total Rate of State Tax	Total Rate of County Tax	Rev.	R. & H.	Welfare	Bonds and Int.	Transportation	P. E. R. A.	Total Rate of County Tax	Rev.	R. & H.	Bond & Int.	Special	Deficiency	Bond & Int.	Tuition	P. E. R. A.	Total Rate of Town Tax	Special	Deficiency	Bond & Int.	Tuition	P. E. R. A.	Total Rate of School Tax	Total Rate of all Taxes										
# 118	9566	4291	250	13897	H.	30.02	20.53	66	1.15			10.85	120.7	9.96			9.96	25.50	114.74	39.11	4.16	7.67	3.2	.64				194.52	325.18										
					N. II.																																		
Assessed Value Homestead	11072			11072																																			
Non-Homestead	2725		30	2805																																			
Total	13897		30	13897																																			

C.H. Bldg. 2.
Civil Def. .16
Agric. Loan .36
Co. Library 2.

Co. Rate w/o Bonds 119.55

Recalculate w/o Bonds
to
NA

35% Replacement 1,062.86

SCHOOL TAXES	SPECIAL SCHOOL TAXES BY DISTRICTS											ALL OTHER TAXES		
	Total Rate of Sch'l Tax	Total Rate of all Taxes	Special	Deficiency	Bonds & Interest	P. E. R. A.	C. B.	Bldg.	St. Loan	Total School Taxes	FUNDS	Rate	Amounts	
194.52	325.18	23990	110104	37529	3991	7360	3070	614	1866.58	State-Non-Homestead, State-Homestead,				
219.52	250.18	21405	49120	16742	1780	3283	1369	273	2597.2	County Revenue, County Road and Bridge, County Welfare, Bonds and Interest				
		4539.5	1592.24	54271	5771	10643	4439	887	2706.30	Transportation P. E. R. A. C. H. Bldg. Civil Def. Agric. Loan Co. Library	416.53 277.54 744.63 159.5 150.56 277.5 91.5 49.9 277.5			
										Town Revenue, Town Road and Bridge, Bonds and Interest	138.21			
										School Special Deficiency Bonds and Interest Tuition P. E. R. A. C. B. Bldg. St. Loan	4539.5 1592.24 54271 5771 10643 4439 887			
												2806.30		
												4619.36		

Total Number of Acres 3695.29
 State of Minnesota, }
 COUNTY OF CASS }
 Auditor of said County and State aforesaid, do hereby certify that the foregoing is a true and correct Schedule, showing the valuation of all the taxable property, in the Town of Lima, in said County, the several rates of Taxation and Totals of the several Tax Funds levied thereon for taxes payable in the year A. D. 1908.
 Witness my hand and official seal, this 24th day of January A. D. 1908.
 Albin P. Carlson
 County Auditor

Total Levy, \$ 4619.36

Total Taxes Real Estate 4609.60
 Pers. Prop. 9.76
 Total 4619.36

or Ceased to be Homesteads

HOMESTEADS			
Sec. or Lot	Town or Block	Range	Number of Acres of Land
			Acres 100ths

Real Estate

Personal

SEAL

COLLECTIONS OF TAXES PAYABLE IN 1962

Town OF Lima

CASS COUNTY, MINNESOTA

FUNDS	MARCH SETTLEMENT 1962	JUNE SETTLEMENT 1962	NOV. SETTLEMENT 1962	Amount Collected from Nov. 19... to First Monday in Jan. 19...	REDUCTIONS	Total Reductions and Collected	BALANCE UNCOLLECTED	ADDITIONS	Total Uncollected to First Monday in January, 19...
State-Non-Homestead									
State-Homestead									
County Revenue	14 49	23002	13184						
County Road and Bridge	9 65	15324	8784						
County Welfare	3590	41115	23567						
County Bond and Interest	1 04	1061	320						
Transportation									
P. E. R. A.	524	8313	4765						
Lib.	90	1532	878						
C. N. Bldg.	36	1532	878						
Civil Defense	32	506	290						
Agri. Equip.	17	276	159						
Town Revenue	481	7631	4375						
Town Road and Bridge									
Bonds & Interest									
School Special	1359	26397	13396						
Deficiency	5577	87915	50393						
Bonds & Interest	1944	36102	10886						
Tuition									
P. E. R. A.	202	3187	1827						
C. O.	373	5877	3368						
Bldg.	156	2452	1405						
St. Loan	31	490	281						
	15996	242712	138756						

	SPECIAL	DEFICIENCY	BONDS & INTEREST	P. E. R. A.	C. O.	Bldg.	St. Loan	TOTALS
MARCH SETTLEMENT								
School District No. 118a	1069	4911	1719	178	328	137	27	8369
118na	290	666	225	24	45	19	44	1273
Totals	1359	5577	1944	202	373	156	31	9642
JUNE SETTLEMENT								
School District No. 118a	11914	54680	21505	1982	3655	1825	305	95566
118na	14483	33235	14577	1205	2222	927	185	66854
Totals	26397	87915	36102	3187	5877	2452	490	162420
NOVEMBER SETTLEMENT								
School District No. #1 118a	8564	39304	10107	1425	2627	1096	219	63342
#2 118na	4832	11089	779	402	741	309	62	18214
Totals	13396	50393	10886	1827	3368	1405	281	81556
NOVEMBER to JANUARY								
School District No.								
Totals								
ADDITIONS								
School District No.								
Totals								
REDUCTIONS								
School District No.								
Totals								

or Ceased to be Homesteads

HOMESTEADS			
Sec. or Lot	Town or Block	Range	Number of Acres of Land
			Acres

Real Estate

Personal

Assessment Roll For the Year 1967 and Tax List of Real Property in the Town of Lima

Where "Yes" is Indicated in Homestead Column, Identify Description on Which House is Located by Letter "H" under the Word "Yes." - Indicate Type of Property: R-Residential, C-Commercial, I-Industrial, U-Utility, F-Farm, L-Lakeshore, T-Timber, M-Mineral

Cass County, Minnesota, for Taxes Payable in the Year 1968.

Table with columns for Property Description, Valuations (True and Full, Assessed), School Districts, and Taxes. Includes rows for 'GOVT LOT 1' through 'GOVT LOT 4' and various quarter sections (e.g., SW 1/4, NW 1/4).

Personal

Assessment Roll For the Year 1967 and Tax List of Real Property in the Town of Lima

Where "Yes" is Indicated in Homestead Column, Identify Description on Which House is Located by Letter "H" under the Word "Yes." - **Indicate Type of Property: R-Residential, C-Commercial, I-Industrial, U-Utility, F-Farm, L-Lakeshore, T-Timber, M-Mineral

Cass County, Minnesota, for Taxes Payable in the Year 1968.

Table with columns: IN WHOSE NAME ASSESSED, DESCRIPTION OF PROPERTY, TRUE AND FULL VALUATIONS, ASSESSED VALUATIONS, VALUATIONS BY SCHOOL DISTRICTS AS EQUALIZED BY DEPARTMENT OF TAXATION, SOLD FOR TAXES, PAID, WHEN PAID, Number of Receipt, March Settlement 1968, June Settlement 1968, Penalty, November Settlement 1968, Penalty, Collections to First Monday in January 1969, Penalty, Delinquent on First Monday in January 1969, Total Delinquent Tax and Penalty, REMARKS.

Personal

Assessment Roll For the Year 1967 and Tax List of Real Property in the

Town of Lima

Cass County, Minnesota, for Taxes Payable in the Year 1968.

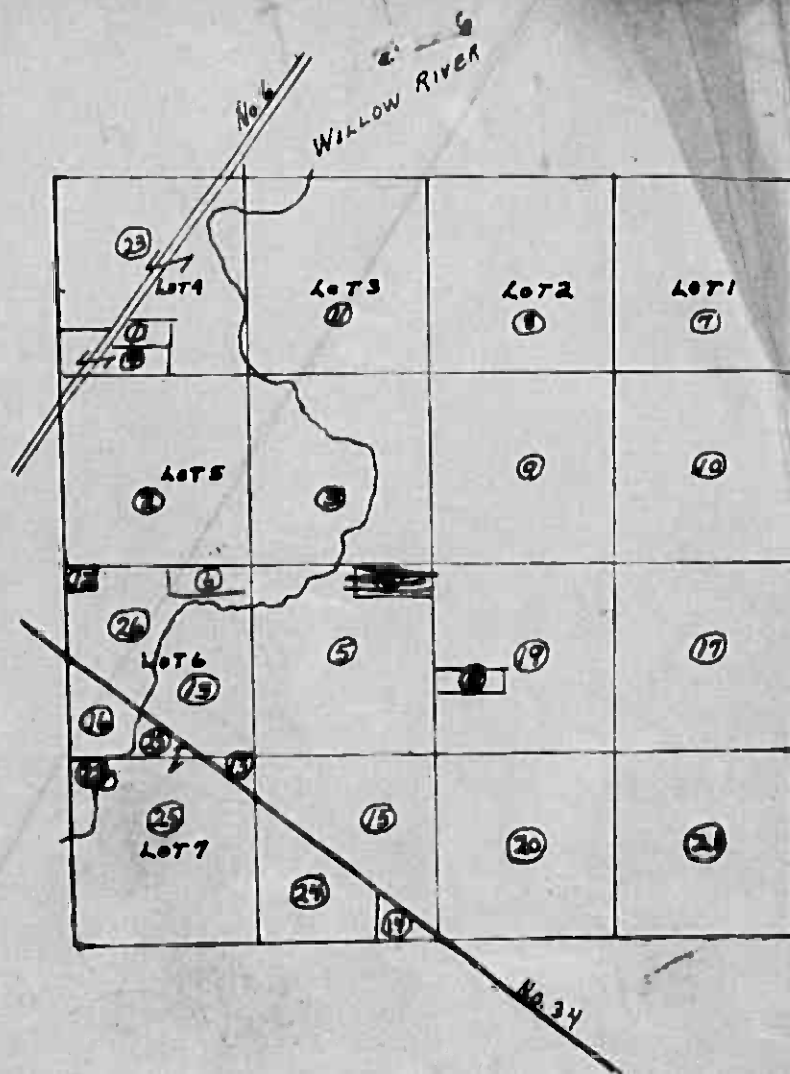
Where "Yes" is Indicated in Homestead Column, Identify Description on Which House is Located by Letter "H" under the Word "Yes." - **Indicate Type of Property: R-Residential, C-Commercial, I-Industrial, U-Utility, F-Farm, L-Lakeshore, T-Timber, M-Mineral

Table with columns: IN WHOSE NAME ASSESSED, DESCRIPTION OF PROPERTY, TRUE AND FULL VALUATIONS, ASSESSED VALUATIONS, VALUATIONS BY SCHOOL DISTRICTS AS EQUALIZED BY DEPARTMENT OF TAXATION, TAXES, PAID, WHEN PAID, etc.

(continued)

Personal

1	Soldner	#-12630-A
2	Pohl	* 12631
3	Kentoph	12632
4	"	12633
5	"	12634
10nds X 28nds	6 Theulby	12635-A
7	U.S.A.	12625
8	Kentoph	12626
9	Uleath	12627
10	"	12628
11	Kentoph	12629
12	Borchardt	12635C
13	Swankier	12635-A+B
14	Romnesse	12637-A
15	Drossman	12637-B
16	Baldorf	12638
17	U.S.A.	12639
125 X 500	18 Swing	12640-A
19	Clark	12640
20	"	12641
21	U.S.A.	12642
22	Batalof	12643
23	Kentoph	12630
24	Wilson	
25	"	
26	No OWNERSHIP	



Sec. 6-141-25

7-19-68

H.T.M.

Assessment Roll For the Year 1967 and Tax List of Real Property in the Town of Lima

Cass County, Minnesota, for Taxes Payable in the Year 1968.

Table with columns: IN WHOSE NAME ASSESSED, DESCRIPTION OF PROPERTY, TRUE AND FULL VALUATIONS, ASSESSED VALUATIONS, VALUATIONS BY SCHOOL DISTRICTS AS EQUALIZED BY DEPARTMENT OF TAXATION, TAXES, PAID, WHEN PAID, etc.

Assessment Roll For the Year 1967 and Tax List of Real Property in the Town of Lima

Where "Yes" is Indicated in Homestead Column, Identify Description on Which House is Located by Letter "H" under the Word "Yes." - Indicate Type of Property: R-Residential, C-Commercial, I-Industrial, U-Utility, F-Farm, L-Lakeshore, T-Timber, M-Mineral

Table with columns: IN WHOSE NAME ASSESSED, DESCRIPTION OF PROPERTY, TRUE AND FULL VALUATIONS, ASSESSED VALUATIONS, and FINAL EQUALIZED VALUE. Includes entries for U.S. of America, Oscar M. + Martha B. Sorum, George K. + Mildred Bae, Erick D. Bae, Donald A. + Janet Brown, Warren + Celia Anderson.

Cass County, Minnesota, for Taxes Payable in the Year 1968.

Table with columns: VALUATIONS BY SCHOOL DISTRICTS AS EQUALIZED BY DEPARTMENT OF TAXATION, TAXES, PAID, WHEN PAID, and REMARKS. Includes handwritten entries for taxes paid and balance forward.

Personal

Assessment Roll For the Year 1967 and Tax List of Real Property in the

Town of Lima

Where "Yes" is Indicated in Homestead Column, Identify Description on Which House is Located by Letter "H" under the Word "Yes." - **Indicate Type of Property: R-Residential, C-Commercial, I-Industrial, U-Utility, F-Farm, L-Lakeshore, T-Timber, M-Mineral

Table with columns: IN WHOSE NAME ASSESSED, DESCRIPTION OF PROPERTY, TRUE AND FULL VALUATIONS, ASSESSED VALUATIONS, and FINAL EQUALIZED VALUE. Includes rows for U.S. of America with various subdivisions and acreages.

Cass County, Minnesota, for Taxes Payable in the Year 1968.

Table for tax payments with columns: VALUATIONS BY SCHOOL DISTRICTS AS EQUALIZED BY DEPARTMENT OF TAXATION, Tax including State Homestead, State Tax on Non-Homestead, SPECIAL TAXES, TOTAL TAXES, PAID, WHEN PAID, Number of Receipts, March Settlement, June Settlement, Penalty, November Settlement, Collections to First Monday in January 1969, Delinquent on First Monday in January 1969, Total Delinquent Tax and Penalty, and REMARKS.

Personal

Assessment Roll For the Year 1967 and Tax List of Real Property in the

Town of Lima

Where "Yes" is Indicated in Homestead Column, Identify Description on Which House is Located by Letter "H" under the Word "Yes." - Indicate Type of Property: R-Residential, C-Commercial, I-Industrial, U-Utility, F-Farm, L-Lakeshore, T-Timber, M-Mineral

Form 501 MILLER-DAVIS CO., MINNEAPOLIS

DESCRIPTION OF PROPERTY

TRUE AND FULL VALUATIONS

ASSESSED VALUATIONS

VALUATIONS BY SCHOOL DISTRICTS AS EQUALIZED BY DEPARTMENT OF TAXATION

Table with columns: IN WHOSE NAME ASSESSED, SUBDIVISION, Acres, No. School District, Indicate Homestead, Agricultural, Indicate Type of Property, LAND, BUILDINGS, MACHINERY, TOTAL True and Full Value, RURAL, ALL OTHER, MACHINERY, Seasonal and Recreational Cabins, TOTAL ASSESSED VALUE, Total Assessed Value as Equalized by the Board of Review, FINAL EQUALIZED VALUE.

Cass County, Minnesota, for Taxes Payable in the Year 1968.

Table with columns: SOLID FOR TAXES, District No., Rate, District No., Rate, District No., Rate, District No., Rate, District No., Rate, District No., Rate, Tax Including State Homestead, State Tax on Non-Homestead, SPECIAL TAXES, BOND SPECIAL TAXES, TOTAL TAXES, PAID, WHEN PAID, Number of Receipts, March Settlement 1968, June Settlement 1968, Penalty Settlement 1968, November Settlement 1968, Penalty, Collections to First Monday in January 1969, Penalty, Delinquent on First Monday in January 1969, Total Delinquent Tax and Penalty, REMARKS.

U.S. of America
Alma E. Peterson

Personal

Assessment Roll For the Year 1967 and Tax List of Real Property in the

Town of Lima

*Where "Yes" is Indicated in Homestead Column, Identify Description on Which House is Located by Letter "H" under the Word "Yes." - **Indicate Type of Property: R-Residential, C-Commercial, I-Industrial, U-Utility, F-Farm, L-Lakeshore, T-Timber, M-Mineral

IN WHOSE NAME ASSESSED	DESCRIPTION OF PROPERTY				No. School District	Indicate Homestead Yes or No	Agri. or Res. Yes or No	Indicate Type of Property	TRUE AND FULL VALUATIONS				ASSESSED VALUATIONS							MINI. EQUALIZED VALUE
	SUBDIVISION	Sec. or Lot	Town or Block	Ring					Number of Acres of Land	LAND Exclusive of Structures and Improvements	BUILDINGS and Other Structures	MACHINERY Permanently Attached to Real Estate	TOTAL True and Full Value	RURAL		ALL OTHER			TOTAL ASSESSED VALUE	
Acres	100ths	Dollars	Dollars	Dollars	Dollars	Dollars	Dollars	Dollars	Dollars	Dollars	Dollars	Dollars	Dollars	Dollars	Dollars	Dollars				
U. S. of America	NE 1/4 of NE 1/4		11	141	25															
U. S. of America	NW 1/4 of NE 1/4																			
U. S. of America	SW 1/4 of NE 1/4																			
U. S. of America	SE 1/4 of NE 1/4																			
U. S. of America	NE 1/4 of NW 1/4																			
U. S. of America	NW 1/4 of NW 1/4																			
U. S. of America	SW 1/4 of NW 1/4																			
U. S. of America	SE 1/4 of NW 1/4																			
U. S. of America	NE 1/4 of SW 1/4																			
U. S. of America	NW 1/4 of SW 1/4																			
U. S. of America	SW 1/4 of SW 1/4																			
U. S. of America	SE 1/4 of SW 1/4																			
U. S. of America	NE 1/4 of SE 1/4																			
U. S. of America	NW 1/4 of SE 1/4																			
U. S. of America	SW 1/4 of SE 1/4																			
U. S. of America	SE 1/4 of SE 1/4																			

Cass County, Minnesota, for Taxes Payable in the Year 1968.

SOLD FOR TAXES	VALUATIONS BY SCHOOL DISTRICTS AS EQUALIZED BY DEPARTMENT OF TAXATION						Tax Including State Homestead	State Tax on Non-Homestead	SPECIAL TAXES	SPECIAL TAXES	TOTAL TAXES	PAID	WHEN PAID	Number of Receipts	March Settlement 1968	June Settlement 1968	Penalty	November Settlement 1968	Penalty	Collections to First Monday in January 1969	Penalty	Delinquent on First Monday in January 1969	Total Delinquent Tax and Penalty	REMARKS
	District No. 1	District No. 2	District No. 3	District No. 4	District No. 5	District No. 6																		
1																								
2																								
3																								
4																								
5																								
6																								
7																								
8																								
9																								
10																								
11																								
12																								
13																								
14																								
15																								
16																								
17																								
18																								
19																								
20																								

Personal

Assessment Roll For the Year 1967 and Tax List of Real Property in the Town of Lima

Cass County, Minnesota, for Taxes Payable in the Year 1968.

Where "Yes" is Indicated in Homestead Column. Identify Description on Which House is Located by Letter "H" under the Word "Yes." - Indicate Type of Property: R-Residential, C-Commercial, I-Industrial, U-Utility, F-Farm, L-Lakeshore, T-Timber, M-Mineral

Table with columns: IN WHOSE NAME ASSESSED, DESCRIPTION OF PROPERTY, TRUE AND FULL VALUATIONS, ASSESSED VALUATIONS, VALUATIONS BY SCHOOL DISTRICTS AS EQUALIZED BY DEPARTMENT OF TAXATION, TAXES, PAID, WHEN PAID, Number of Receipt, March Settlement, June Settlement, Penalty, November Settlement, Penalty, Collections to First Monday in January, Delinquent on First Monday in January, Total Delinquent Tax and Penalty, REMARKS.

Personal

Assessment Roll For the Year 1967 and Tax List of Real Property in the

Town of Lima

Cass County, Minnesota, for Taxes Payable in the Year 1968.

Where "Yes" is Indicated in Homestead Column, Identify Description on Which House is Located by Letter "H" under the Word "Yes." - **Indicate Type of Property: R-Residential, C-Commercial, I-Industrial, U-Utility, F-Farm, L-Lakeshore, T-Timber, M-Mineral

Table with columns: IN WHOSE NAME ASSESSED, DESCRIPTION OF PROPERTY (Subdivision, Sec., Town, Rng., Acres), TRUE AND FULL VALUATIONS (LAND, BUILDINGS, MACHINERY, TOTAL), ASSESSED VALUATIONS (RURAL, ALL OTHER), VALUATIONS BY SCHOOL DISTRICTS AS EQUALIZED BY DEPARTMENT OF TAXATION, TAXES (SPECIAL, TOTAL, PAID), WHEN PAID, and REMARKS.

Assessment Roll For the Year 1967 and Tax List of Real Property in the Town of Lima

Where "Yes" is Indicated in Homestead Column, Identify Description on Which House is Located by Letter "H" under the Word "Yes." - *Indicate Type of Property: R-Residential, C-Commercial, I-Industrial, U-Utility, F-Farm, L-Lakeshore, T-Timber, M-Mineral

Cass County, Minnesota, for Taxes Payable in the Year 1968.

Table with columns: IN WHOSE NAME ASSESSED, DESCRIPTION OF PROPERTY, TRUE AND FULL VALUATIONS, ASSESSED VALUATIONS, VALUATIONS BY SCHOOL DISTRICTS AS EQUALIZED BY DEPARTMENT OF TAXATION, TAXES, PAID, WHEN PAID, Number of Receipt, March Settlement 1968, June Settlement 1968, November Settlement 1968, Collections to First Monday in January 1969, Delinquent on First Monday in January 1969, Total Delinquent Tax and Penalty, REMARKS.

362

Handwritten calculations and totals at the bottom of the page, including sums like 18520, 310, 18830, 4200, 2654, 17284.

Personal

Assessment Roll For the Year 1967 and Tax List of Real Property in the Town of Lima

Where "Yes" is Indicated in Homestead Column, Identify Description on Which House is Located by Letter "H" under the Word "Yes." - **Indicate Type of Property: R-Residential, C-Commercial, I-Industrial, U-Utility, F-Farm, L-Lakeshore, T-Timber, M-Mineral

Cass County, Minnesota, for Taxes Payable in the Year 1968.

Table with columns: IN WHOSE NAME ASSESSED, DESCRIPTION OF PROPERTY, TRUE AND FULL VALUATIONS, ASSESSED VALUATIONS, VALUATIONS BY SCHOOL DISTRICTS AS EQUALIZED BY DEPARTMENT OF TAXATION, SOLD FOR TAXES, SPECIAL TAXES, BONDAGE TAXES, TOTAL TAXES, PAID, WHEN PAID, Number of Receipt, March Settlement, June Settlement, November Settlement, Collections to First Monday in January 1969, Penalty, Delinquent on First Monday in January 1969, Total Delinquent Tax and Penalty, REMARKS.

Assessment Roll For the Year 1967 and Tax List of Real Property in the

Town of Lima

Cass County, Minnesota, for Taxes Payable in the Year 1968.

*Where "Yes" is Indicated in Homestead Column, Identify Description on Which House is Located by Letter "H" under the Word "Yes." - **Indicate Type of Property: R-Residential, C-Commercial, I-Industrial, U-Utility, F-Farm, L-Lakeshore, T-Timber, M-Mineral

Table with columns for IN WHOSE NAME ASSESSED, DESCRIPTION OF PROPERTY, TRUE AND FULL VALUATIONS, ASSESSED VALUATIONS, VALUATIONS BY SCHOOL DISTRICTS AS EQUALIZED BY DEPARTMENT OF TAXATION, TAXES, PAID, WHEN PAID, and REMARKS. Includes handwritten entries for Arthur J. Swankier, Edith C. + Howard J. Remus, and C.R. Ferrell + Stanley J. Clark.

Personal

Assessment Roll For the Year 1967 and Tax List of Real Property in the Town of Lima

Where "Yes" is Indicated in Homestead Column, Identify Description on Which House is Located by Letter "H" under the Word "Yes." - Indicate Type of Property: R-Residential, C-Commercial, I-Industrial, U-Utility, F-Farm, L-Lakeshore, T-Timber, M-Mineral

Table with columns: IN WHOSE NAME ASSESSED, DESCRIPTION OF PROPERTY, TRUE AND FULL VALUATIONS, ASSESSED VALUATIONS, and FINAL EQUALIZED VALUE. Includes entries for State of Minnesota and Janet Anderson.

Cass County, Minnesota, for Taxes Payable in the Year 1968.

Table with columns: VALUATIONS BY SCHOOL DISTRICTS AS EQUALIZED BY DEPARTMENT OF TAXATION, TAXES, PAID, WHEN PAID, and Total Delinquent Tax and Penalty. Includes handwritten entries for #13, #15, and #28.

Personal

Assessment Roll For the Year 1967 and Tax List of Real Property in the Town of Lima

Cass County, Minnesota, for Taxes Payable in the Year 1968.

Table with columns: IN WHOSE NAME ASSESSED, DESCRIPTION OF PROPERTY, TRUE AND FULL VALUATIONS, ASSESSED VALUATIONS (RURAL, ALL OTHER), and FINAL EQUALIZED VALUE.

Table with columns: VALUATIONS BY SCHOOL DISTRICTS AS EQUALIZED BY DEPARTMENT OF TAXATION, SPECIAL TAXES, TOTAL TAXES, PAID, WHEN PAID, and various settlement and penalty dates.

Assessment Roll For the Year 1967 and Tax List of Real Property in the

Town of Lima

Cass County, Minnesota, for Taxes Payable in the Year 1968.

*Where "Yes" is Indicated in Homestead Column, Identify Description on Which House is Located by Letter "H" under the Word "Yes." - **Indicate Type of Property: R-Residential, C-Commercial, I-Industrial, U-Utility, F-Farm, L-Lakeshore, T-Timber, M-Mineral

Table with columns for Description of Property, True and Full Valuations, Assessed Valuations, Valuations by School Districts, and Tax Lists. Includes handwritten entries for property owners like Dennis A. + Janet C. Nickerson and George H. Crosby.

Assessment Roll For the Year 1967 and Tax List of Real Property in the

Town of Lima

Cass County, Minnesota, for Taxes Payable in the Year 1968.

Where "Yes" is Indicated in Homestead Column, Identify Description on Which House is Located by Letter "H" under the Word "Yes." - **Indicate Type of Property: R-Residential, C-Commercial, I-Industrial, U-Utility, F-Farm, L-Lakeshore, T-Timber, M-Miner**

Table with columns: IN WHOSE NAME ASSESSED, DESCRIPTION OF PROPERTY, TRUE AND FULL VALUATIONS, ASSESSED VALUATIONS, VALUATIONS BY SCHOOL DISTRICTS AS EQUALIZED BY DEPARTMENT OF TAXATION, TAXES, PAID, WHEN PAID, Number of Receipt, March Settlement 1968, June Settlement 1968, November Settlement 1968, Collections to First Monday in January 1969, Delinquent on First Monday in January 1969, Total Delinquent Tax and Penalty, REMARKS.

U. S. of America 1 NE 1/4 of NE 1/4 22 141 25 118

State of Minnesota 2 NW 1/4 of NE 1/4

U. S. of America 3 SW 1/4 of NE 1/4

U. S. of America 4 SE 1/4 of NE 1/4

5

State of Minnesota 6 NE 1/4 of NW 1/4

U. S. of America 7 NW 1/4 of NW 1/4

Albert Lang, et al 8 SW 1/4 of NW 1/4 40 no no T

U. S. of America 9 SE 1/4 of NW 1/4

10

U. S. of America 11 NE 1/4 of SW 1/4

State of Minnesota 12 NW 1/4 of SW 1/4

State of Minnesota 13 SW 1/4 of SW 1/4

U. S. of America 14 SE 1/4 of SW 1/4

15

U. S. of America 16 NE 1/4 of SE 1/4

State of Minnesota 17 NW 1/4 of SE 1/4

U. S. of America 18 SW 1/4 of SE 1/4

State of Minnesota 19 SE 1/4 of SE 1/4

20

40

1

2

3

4

5

6

7

8

9

10

11

12

13

14

15

16

17

18

19

20

VALUATIONS BY SCHOOL DISTRICTS AS EQUALIZED BY DEPARTMENT OF TAXATION. Columns include District No., Rate, Mills, Tax Including State Homestead, SPECIAL TAXES, TOTAL TAXES, PAID, WHEN PAID, Number of Receipt, March Settlement 1968, June Settlement 1968, November Settlement 1968, Collections to First Monday in January 1969, Delinquent on First Monday in January 1969, Total Delinquent Tax and Penalty.

58 1798 234 2032 PAID IN FULL FEB 27 1968 1225 2032 3317

58 712 1798 234 2032

Personal

Assessment Roll For the Year 1967 and Tax List of Real Property in the Town of Lima

Where "Yes" is Indicated in Homestead Column, Identify Description on Which House is Located by Letter "H" under the Word "Yes." - **Indicate Type of Property: R-Residential, C-Commercial, I-Industrial, U-Utility, F-Farm, L-Lakeshore, T-Timber, M-Mineral

Cass County, Minnesota, for Taxes Payable in the Year 1968.

Table with columns for IN WHOSE NAME ASSESSED, DESCRIPTION OF PROPERTY, TRUE AND FULL VALUATIONS, ASSESSED VALUATIONS, VALUATIONS BY SCHOOL DISTRICTS AS EQUALIZED BY DEPARTMENT OF TAXATION, TAXES, PAID, WHEN PAID, and REMARKS. Includes rows for U.S. of America and State of Minnesota with various subdivision and acreage details.

Personal

Assessment Roll For the Year 1967 and Tax List of Real Property in the

Town of Lima

Cass County, Minnesota, for Taxes Payable in the Year 1968.

Where "Yes" is Indicated in Homestead Column, Identify Description on Which House is Located by Letter "H" under the Word "Yes." - **Indicate Type of Property: R-Residential, C-Commercial, I-Industrial, U-Utility, F-Farm, L-Lakeshore, T-Timber, M-Mineral

Table with columns: IN WHOSE NAME ASSESSED, DESCRIPTION OF PROPERTY, TRUE AND FULL VALUATIONS, ASSESSED VALUATIONS, VALUATIONS BY SCHOOL DISTRICTS AS EQUALIZED BY DEPARTMENT OF TAXATION, SOLD FOR TAXES, PAID, WHEN PAID, Number of Receipt, March Settlement 1968, June Settlement 1968, Penalty, November Settlement 1968, Penalty, Collections to First Monday in January 1969, Delinquent on First Monday in January 1969, Total Delinquent Tax and Penalty, REMARKS.

Personal

Assessment Roll For the Year 1967 and Tax List of Real Property in the Town of Lima

Cass County, Minnesota, for Taxes Payable in the Year 1968.

*Where "Yes" is Indicated in Homestead Column. Identify Description on Which House is Located by Letter "H" under the Word "Yes." - **Indicate Type of Property: R-Residential, C-Commercial, I-Industrial, U-Utility, F-Farm, L-Lakeshore, T-Timber, M-Mineral

Table with columns for: IN WHOSE NAME ASSESSED, DESCRIPTION OF PROPERTY, TRUE AND FULL VALUATIONS, ASSESSED VALUATIONS, VALUATIONS BY SCHOOL DISTRICTS AS EQUALIZED BY DEPARTMENT OF TAXATION, TAXES, PAID, WHEN PAID, Number of Receipt, March Settlement, June Settlement, Penalty, November Settlement, Penalty, Collections to First Monday in January 1969, Penalty, Delinquent on First Monday in January 1969, Total Delinquent Tax and Penalty, REMARKS.

Personal

Assessment Roll For the Year 1967 and Tax List of Real Property in the Town of Lima

Where "Yes" is Indicated in Homestead Column, Identify Description on Which House is Located by Letter "H" under the Word "Yes." - Indicate Type of Property: R-Residential, C-Commercial, I-Industrial, U-Utility, F-Farm, L-Lakeshore, T-Timber, M-Mineral

Cass County, Minnesota, for Taxes Payable in the Year 1968.

Table with columns: IN WHOSE NAME ASSESSED, DESCRIPTION OF PROPERTY, TRUE AND FULL VALUATIONS, ASSESSED VALUATIONS, VALUATIONS BY SCHOOL DISTRICTS OR EQUALIZED BY DEPARTMENT OF TAXATION, TAXES, PAID, WHEN PAID, Number of Receipt, March Settlement 1968, June Settlement 1968, November Settlement 1968, Penalty, Collections in First Monday in January 1969, Delinquent on First Monday in January 1969, Total Delinquent Tax and Penalty, REMARKS.

Personal

Assessment Roll For the Year 1967 and Tax List of Real Property in the Town of Lima

*Where "Yes" is Indicated in Homestead Column, Identify Description on Which House is Located by Letter "H" under the Word "Yes." - **Indicate Type of Property: R-Residential, C-Commercial, I-Industrial, U-Utility, F-Farm, L-Lakeshore, T-Timber, M-Mineral

Cass County, Minnesota, for Taxes Payable in the Year 1968.

Table with columns for IN WHOSE NAME ASSESSED, DESCRIPTION OF PROPERTY, TRUE AND FULL VALUATIONS, ASSESSED VALUATIONS, VALUATIONS BY SCHOOL DISTRICTS AS EQUALIZED BY DEPARTMENT OF TAXATION, and TAXES. Includes rows for State of Minnesota and U.S. of America with various property descriptions and tax details.

Personal

Assessment Roll For the Year 1967 and Tax List of Real Property in the Town of Lima

Where "Yes" is Indicated in Homestead Column, Identify Description on Which House is Located by Letter "H" under the Word "Yes." - *Indicate Type of Property: R-Residential, C-Commercial, I-Industrial, U-Utility, F-Farm, L-Lakeshore, T-Timber, M-Mineral

Table with columns: IN WHOSE NAME ASSESSED, DESCRIPTION OF PROPERTY, TRUE AND FULL VALUATIONS, ASSESSED VALUATIONS, and FINAL EQUALIZED VALUE. Includes entries for State of Minnesota and Armand & Lamona Miller.

Cass County, Minnesota, for Taxes Payable in the Year 1968.

Table with columns: VALUATIONS BY SCHOOL DISTRICTS AS EQUALIZED BY DEPARTMENT OF TAXATION, TAXES, PAID, WHEN PAID, and REMARKS. Includes handwritten entries for taxes paid and school district valuations.

Personal

Assessment Roll For the Year 1967 and Tax List of Real Property in the

Town of Lima

Where "Yes" is Indicated in Homestead Column, Identify Description on Which House is Located by Letter "H" under the Word "Yes." - Indicate Type of Property: R-Residential, C-Commercial, I-Industrial, U-Utility, F-Farm, L-Lakeshore, T-Timber, M-Mineral

Table with columns: IN WHOSE NAME ASSESSED, DESCRIPTION OF PROPERTY, TRUE AND FULL VALUATIONS, ASSESSED VALUATIONS, and FINAL EQUALIZED VALUE. Includes entries for Sidney Myers + Mildred Myers and Armand + Lamona Miller.

Cass County, Minnesota, for Taxes Payable in the Year 1968.

Table with columns: VALUATIONS BY SCHOOL DISTRICTS AS EQUALIZED BY DEPARTMENT OF TAXATION, TAXES, PAID, WHEN PAID, and REMARKS. Includes handwritten notes like 'PAID IN FULL' and '1st HALF PAID'.

Assessment Roll For the Year 1967 and Tax List of Real Property in the

Town of Lima

Where "Yes" is Indicated in Homestead Column, Identify Description on Which House is Located by Letter "H" under the Word "Yes." - **Indicate Type of Property: R-Residential, C-Commercial, I-Industrial, U-Utility, F-Farm, L-Lakeshore, T-Timber, M-Mineral

Cass County, Minnesota, for Taxes Payable in the Year 1968.

Table with columns: IN WHOSE NAME ASSESSED, DESCRIPTION OF PROPERTY, TRUE AND FULL VALUATIONS, ASSESSED VALUATIONS, VALUATIONS BY SCHOOL DISTRICTS AS EQUALIZED BY DEPARTMENT OF TAXATION, Tax Including State Homestead, SPECIAL TAXES, PAID, WHEN PAID, Number of Receipt, March Settlement 1968, June Settlement 1968, Penalty, November Settlement 1968, Penalty, Collections to First Monday in January 1969, Delinquent on First Monday in January 1969, Total Delinquent Tax and Penalty, REMARKS. Includes handwritten entries for Oscar + Martha Louisa and various tax amounts.

Assessment Roll For the Year 1967 and Tax List of Real Property in the Town of Lima

Where "Yes" is Indicated in Homestead Column, Identify Description on Which House is Located by Letter "H" under the Word "Yes." - *Indicate Type of Property: R-Residential, C-Commercial, I-Industrial, U-Utility, F-Farm, L-Lakeshore, T-Timber, M-Mineral

Cass County, Minnesota, for Taxes Payable in the Year 1968.

Table with columns: IN WHOSE NAME ASSESSED, DESCRIPTION OF PROPERTY, TRUE AND FULL VALUATIONS, ASSESSED VALUATIONS, VALUATIONS BY SCHOOL DISTRICTS AS EQUALIZED BY DEPARTMENT OF TAXATION, TAXES, PAID, WHEN PAID, Number of Receipt, March Settlement 1968, June Settlement 1968, Penalty, November Settlement 1968, Penalty, Collections to First Monday in January 1969, Delinquent on First Monday in January 1969, Total Delinquent Tax and Penalty, REMARKS.

Personal

Assessment Roll For the Year 1967 and Tax List of Real Property in the

Town of Lima

Cass County, Minnesota, for Taxes Payable in the Year 1968.

Where "Yes" is Indicated in Homestead Column, Identify Description on Which House is Located by Letter "H" under the Word "Yes." - Indicate Type of Property: R-Residential, C-Commercial, I-Industrial, U-Utility, F-Farm, L-Lakeshore, T-Timber, M-Mineral

Table with columns: IN WHOSE NAME ASSESSED, DESCRIPTION OF PROPERTY, TRUE AND FULL VALUATIONS, ASSESSED VALUATIONS, VALUATIONS BY SCHOOL DISTRICTS AS EQUALIZED BY DEPARTMENT OF TAXATION, TAXES, PAID, WHEN PAID, Number of Receipt, March Settlement 1968, June Settlement 1968, Penalty, November Settlement 1968, Penalty, Collections to First Monday in January 1969, Penalty, Delinquent on First Monday in January 1969, Total Delinquent Tax and Penalty, REMARKS.

U. S. of America 1 less 1.31 acs. R/W 34 14.1 25 118

State of Minnesota 2 N.W. 1/4 of N.E. 1/4

State of Minnesota 3 S.W. 1/4 of N.E. 1/4

U. S. of America 4 S.E. 1/4 of N.E. 1/4

State of Minnesota 6 N.E. 1/4 of N.W. 1/4

State of Minnesota 7 N.W. 1/4 of N.W. 1/4

State of Minnesota 8 S.W. 1/4 of N.W. 1/4

State of Minnesota 9 E.E. 1/4 of N.W. 1/4

State of Minnesota 11 N.E. 1/4 of S.W. 1/4

State of Minnesota 12 N.W. 1/4 of S.W. 1/4

State of Minnesota 13 S.W. 1/4 of S.W. 1/4

State of Minnesota 14 S.E. 1/4 of S.W. 1/4

Carl J. + Frieda M. Carlson 16 N.E. 1/4 of S.E. 1/4 40 no no T

State of Minnesota 17 N.W. 1/4 of S.E. 1/4

John Carlson 18 S.W. 1/4 of S.E. 1/4 40 40 485 F

John L. Carlson 1/2 int. Ernest L. + Barbara Carlson 1/2 int. 19 S.E. 1/4 of S.E. 1/4 40 " " "

Lima Imp. 20 1/5 acs. N.E. 1/4 of N.E. 1/4 120

16 53 1642 214 1856 16 PAID IN FULL MAY 17 1968 5791 1856 3533

18 # 41 1168 166 1334 18 2nd HALF PAID OCT 25 1968 1475 667 667 3320 17604

19 # 43 1226 174 1400 19 1st HALF PAID MAY 31 1968 10166 700 700 " "

20 # 84 = # 84 2394 83 1475 3222 1367

84 = 137 4936 554 4590

Personal

Assessment Roll For the Year 1967 and Tax List of Real Property in the

Town of Lima

Cass County, Minnesota, for Taxes Payable in the Year 1968.

*Where "Yes" is Indicated in Homestead Column, Identify Description on Which House is Located by Letter "H" under the Word "Yes." - **Indicate Type of Property: R-Residential, C-Commercial, I-Industrial, U-Utility, F-Farm, L-Lakeshore, T-Timber, M-Mineral

Table with columns: IN WHOSE NAME ASSESSED, DESCRIPTION OF PROPERTY, TRUE AND FULL VALUATIONS, ASSESSED VALUATIONS, VALUATIONS BY SCHOOL DISTRICTS AS EQUALIZED BY DEPARTMENT OF TAXATION, SOLD FOR TAXES, PAID, WHEN PAID, Number of Receipts, March Settlement 1968, June Settlement 1968, November Settlement 1968, Collections to First Monday in January 1969, Delinquent on First Monday in January 1969, Total Delinquent Tax and Penalty, REMARKS.

Personal

