

1922
Town of Kego

Auditor's Office, Cass County, Minnesota.

C. D. Bacon

Auditor of Cass County and State of Minnesota, do hereby certify that the following is a correct list of the taxes levied on the Real and Personal Property in the Town of Rego for the year 1922.

Witness my hand and official seal this 31st day of December, 1922.

SEAL

C. D. Bacon
County Auditor.

Treasurer's Office, Cass County, Minnesota.

Received this, the first Monday (being the 1st day) of January, A. D. 1923, of

C. D. Bacon, Auditor of Cass County, Minnesota, the Tax List of all Taxable Real and Personal Property in the Town of Rego in said County for the year A. D. 1922, as specified above and amounting to \$ 9424 61 Dollars.

H. M. Keown
County Treasurer.

Office of County Treasurer, Cass County, Minnesota.

To A. A. Cates County Auditor.

Sir: I herewith return to you the Tax List for the Town of Rego in said Cass County, for the year 1922 heretofore received from you. I certify that I have compared the same with the duplicate receipts in your office, and have written opposite the amount of each tax so receipted the words "One-Half Paid," or "Paid in Full," as the case may be, and the number of my receipt given in discharge of said tax, and each tract or lot of Real Property against which the taxes remain unpaid is delinquent for said year.

H. M. Keown
County Treasurer.

Auditor's Office, Cass County, Minnesota.

Walker, Minn., Jan. 7th 1924

RECEIVED OF *H. M. Keown*, COUNTY TREASURER.

the Tax List for the Town of Rego in said County of Cass, for the year 1922.

A. A. Cates
County Auditor.

Collection of Taxes of 1922

of

Cass County, Minnesota

Form 10 - Minneapolis

FUNDS	March Settlement		June Settlement		October Settlement		Amount Collected from Nov. 1922 to first Monday in Jan. 1924	March Settlement		June Settlement		October Settlement		TOTAL COLLECTED	BALANCE UNCOLLECTED
	1922	1923	1922	1923	1922	1923		1922	1923	1922	1923	1922	1923		
State Revenue	302	777	813	74	696	1433									
State School		966	344		795	608									
State Teachers Ins. & Ret.		39	140		120	25									
County Revenue	301	3926	12988	74	12009	2471									
County Road and Bridge		6282	22360		19215	3954									
County Poor		1413	5036		4373	870									
Bonds and Interest		4374	15582		13378	2753									
Sinking		6101	21737		18663	3840									
Building		173	615		528	109									
Maintenance		1571	5575		4804	988									
Town Revenue	603	7136	7607	124	6533	1344									
Town Road and Bridge		11779	41963		36028	7413									
Town Poor															
Town Mill Drag		785	2798		2402	494									
Town State Loan		3942	14044		12057	2481									
Town Building															
Town Fire Patrol		3926	13988		12009	2471									
Phone		3926	13988		12009	2471									
School Local 1 Mill		785	2798		2402	494									
School Special	604	24305	86582	147	74341	15295									
School Interest		1610	5735		4924	1013									
School															
TOTALS	1808	80316	286128	42	245664	50547									

SCHOOL DISTRICT	1922				1923				Total	1922				1923				Total	Total Collected	Balance Uncollected
	Local 1 Mill	Special	State Loan	Total	Local 1 Mill	Special	State Loan	Total		Local 1 Mill	Special	State Loan	Total	Local 1 Mill	Special	State Loan	Total			
School District No.																				
" " "																				
" " "																				
" " "																				
" " "																				
" " "																				
TOTALS																				

Tax List of Real Property in the Town of Kego

Cass County, Minnesota, for Taxes for the Year 1922

Fischer-Minneapolis

IN WHOSE NAME ASSESSED	TO WHOM TRANSFERRED	Subd. for Tax	SUBDIVISION	Sec. or Lot	Town or Block	No. of Acres	VALUATION	No. School Dist.	School District No.	School District Rate	Highway Ditch No.	Ditch No.	Ditch No.	Ditch No.	TOTAL TAXES	PAID	WHEN PAID	No. of Receipt	March Settlement	June Settlement	Penalty	November Settlement	Penalty	Collections to First Monday in January	Penalty	Delinquent on First Monday in January	REMARKS	
																												Dollars
Inger Erickson			NE 1/4 of NE 1/4			28.40 41	176								2005	1st. Half Paid	OCT 10 1923											
			NW 1/4 of NE 1/4			11.36	256								2512	2nd. Half Paid	OCT 10 1923	39987										
			SW 1/4 of NE 1/4			40	194								1984	3rd. Half Paid	MAY 31 1923	7782		4296		4795						
			SE 1/4 of NE 1/4			40	194								1984	4th. Half Paid	MAY 31 1923											
			NE 1/4 of NW 1/4																									
Alfred Bertelwood Boe			NW 1/4 of NW 1/4			41.36	176								2005	7	x17652								2306	2005 - 3.01		
			SW 1/4 of NW 1/4			40	194								1984	8	x17653								2282	1984 - 2.98		
			SE 1/4 of NW 1/4			40	194								1984	9	x17654									1984		
			NE 1/4 of SW 1/4			40	167																					
Reckhakehand Invest Co			NW 1/4 of SW 1/4			40	194								1729	11	End Half Paid	OCT 31 1923										
			SW 1/4 of SW 1/4			40	194								1984	12	1st. Half Paid	MAY 31 1923	13078									
			SW 1/4 of SW 1/4			40	194								1984	13	2nd. Half Paid	OCT 31 1923	560		3713		3713					
			SE 1/4 of SW 1/4			40	167								1729	14	3rd. Half Paid	OCT 31 1923										
			Sold for Tax NE 1/4 of SE 1/4			40	167																					
			Sold for Tax NW 1/4 of SE 1/4			40	204																			1988	1729 - 2.59	
			Sold for Tax SW 1/4 of SE 1/4			40	167																			2635	2791 - 3.44	
			Sold for Tax SE 1/4 of SE 1/4			40	167																			1988	1729 - 2.59	
																										1989		
						60313	2881																					
															29468												8009	8008

Tax List of Real Property in the Town of Kego

Cass County, Minnesota, for Taxes for the Year 1922

Pauper-Minneapolis

IN WHOSE NAME ASSESSED	TO WHOM TRANSFERRED	Subd.	VALUATION	No. of Acres		School District	School District	School District	Highway Ditch	Ditch No.	Ditch No.	Ditch No.	TOTAL TAXES	PAID	WHEN PAID	No. of Receipt	March Settlement	June Settlement	Penalty	November Settlement	Penalty	Collections to First Monday in January	Penalty	Delinquent on First Monday in January	REMARKS		
				Acres	100ths																					Dollars	\$
Michael J. Seifert	Mathias Weinand	NE 1/4 of NE 1/4	191	11	141.38	40							1984	1	2d Half Paid	OCT 26 1923	1071										
Nels Handeen		NW 1/4 of NE 1/4	114			40							1984	2	1st Half Paid	MAY 31 1923	5452		792		99						
(Michael J. Seifert - 6 10 ac)	(Mathias Weinand W. 30 ac)	SW 1/4 of NE 1/4	194			40							1984	3	2d Half Paid	MAY 31 1923	1128		1984		1984						
		SE 1/4 of NE 1/4	191			40							1984	4	1st Half Paid	MAY 31 1923	7168										
Nels Handeen		2 1/2 NE 1/4 of NW 1/4	97			20							496	5	2d Half Paid	MAY 16 1923	2988		496								
		NW 1/4 of NW 1/4	97			20							992	6	1st Half Paid	MAY 31 1923	7168		496		496						
Interstate Colonization Co.	Sold for Thomas	SW 1/4 of NW 1/4	194			40							1984	7													
Nels Handeen		2 1/2 SE 1/4 of NW 1/4	97			20							992	8	1st Half Paid	OCT 31 1923	1128										
Interstate Colonization Co.		1/2 of 16 1/4 1/4	97			20							992	9	1st Half Paid	MAY 31 1923	7168		496		496						
Nels Handeen		NE 1/4 of SW 1/4 Ret 4	145			31.25							1483	10													
		NW 1/4 of SW 1/4												11	Paid in Full	MAY 31 1923	4918		1483								
		SW 1/4 of SW 1/4												12													
		SE 1/4 of SW 1/4												13													
														14													
Michael J. Seifert	Mathias Weinand	NE 1/4 of SE 1/4	184			38.50							1882	15	2d Half Paid	OCT 26 1923	1091										
Nels Handeen		NW 1/4 of SE 1/4	75			16.75							921	16	1st Half Paid	MAY 31 1923	5452		941		941						
		SW 1/4 of SE 1/4												17	Paid in Full	MAY 31 1923	4918		921								
Louisa Hoehne	William Pfemmer	SE 1/4 of SE 1/4	179			57							1831	18	2d Half Paid	OCT 20 1923	1034										
														19	1st Half Paid	MAY 31 1923	7820		915		915						
														20													
			1859			383.50							19013						9469		6568						

Tax List of Real Property in the Town of Kego

Cass County, Minnesota, for Taxes for the Year 1922

IN WHOSE NAME ASSESSED	TO WHOM TRANSFERRED	Sold for Taxes	SUBDIVISION	Sec. or Lot	Town or Block	No. of Acres	VALUATION	No. School Dist.	School District No.	School District Rate	Highway Ditch No.	Ditch No.	Ditch No.	Ditch No.	TOTAL TAXES	PAID	WHEN PAID	No. of Recdpt	March Settlement	June Settlement	Penalty	November Settlement	Penalty	Collections to First Monday in January	Penalty	Delinquent on First Monday in January	REMARKS	
																												Dollars
			NE 1/4 of NE 1/4			13 1/4 28																						
Samuel G. Skell			2 NW 1/4 of NE 1/4			20	97								99													
			SW 1/4 of NE 1/4																									
			SE 1/4 of NE 1/4																									
			NE 1/4 of NW 1/4			10	174																					
Benedict Yochum			NW 1/4 of NW 1/4			10	191								1984													
Samuel G. Skell			SW 1/4 of NW 1/4			10	192								1984													
			SE 1/4 of NW 1/4			10	194								1984													
			NE 1/4 of SW 1/4																									
Albert Schefman			NW 1/4 of SW 1/4		Lot 4	38 50	286								292													
			SW 1/4 of SW 1/4																									
			SE 1/4 of SW 1/4																									
			NE 1/4 of SE 1/4																									
Annie S. Anderson			NW 1/4 of SE 1/4		Lot 6 1	58	281								287													
			SW 1/4 of SE 1/4																									
			SE 1/4 of SE 1/4																									
						276 50	11140																					
															14727													

End Half Paid OCT 31 1923
1st. Half Paid MAY 31 1923

14727

1437

6346

2282 1984 - 2.98

1984

1984

79 75 763

1437

6346

11.41 99 2 4.49

99 2 Paid

17344

1984 6 Paid

17344

1984 7 Paid

1984 8 Paid in Full OCT 10 1923

9986

1984 178

1984 9 Paid

17344

1984

292 12 Paid in Full OCT 31 1923

11572

287 16 Paid Half Paid OCT 31 1923
1st. Half Paid MAY 31 1923

12355
8266

1437

1437

Tax List of Real Property in the Town of Kego

Cass County, Minnesota, for Taxes for the Year 1922

IN WHOSE NAME ASSESSED	TO WHOM TRANSFERRED	Sold for Taxes	SUBDIVISION	No. of Acres		VALUATION	No. School Dist.	School District No.	School District Rate	School District Rate	School District Rate	Highway Ditch No.	Ditch No.	Ditch No.	Ditch No.	TOTAL TAXES	PAID	WHEN PAID	No. of Receipt	March Settlement	June Settlement	Penalty	November Settlement	Penalty	Collections to First Monday in January	Penalty	Delinquent on First Monday in January	REMARKS	
				Sec. or Lot	Town or Block																								Dollars
			NE 1/4 of NE 1/4	15	141 28																								
Mustave Kulander			NW 1/4 of NE 1/4		40	194										1984	18012												
J. H. Sabaka	Sold for Taxes		SW 1/4 of NE 1/4		40	194										1984													
			SE 1/4 of NE 1/4		40	194																							
Gust Kulander, S.H. Carben	A.S. Hailand		NE 1/4 of NW 1/4		40	194																							
Herman Gjochum			NW 1/4 of NW 1/4		40	194																							
			SW 1/4 of NW 1/4		40	293																							
			SE 1/4 of NW 1/4		40	293																							
			NE 1/4 of SW 1/4		40	162																							
Margaret W. Brast			NW 1/4 of SW 1/4		40	162																							
Chas. A. Sabaka			SW 1/4 of SW 1/4		40	194																							
			SE 1/4 of SW 1/4		40	162																							
J. H. Sabaka	Sold for Taxes		NE 1/4 of SE 1/4		40	162																							
	Sold for Taxes		NW 1/4 of SE 1/4		40	162																							
	Sold for Taxes		SW 1/4 of SE 1/4		40	166																							
	Sold for Taxes		SE 1/4 of SE 1/4		37 50	304																							
					137 50	2187																							

Tax List of Real Property in the Town of Kego

Pouchar—Minneapolis

Cass County, Minnesota, for Taxes for the Year 1922

IN WHOSE NAME ASSESSED	TO WHOM TRANSFERRED	Sold for Taxes	SUBDIVISION	No. of Acres		VALUATION	No. School Dist.	School District No.	School District Rate Mills	School District Rate Mills	School District Rate Mills	Highway Ditch No.	Ditch No.	Ditch No.	Ditch No.	TOTAL TAXES	PAID	WHEN PAID	No. of Recdpt	March Settlement	June Settlement	Penalty	November Settlement	Penalty	Collections to First Monday in January	Penalty	Delinquent on First Monday in January	REMARKS				
				Sec. or Lot	Town or Block																								Acres	100%	Dollars	\$
John T. Toland			NE 1/4 of NE 1/4	19	141 25 40	194										1984																
			NW 1/4 of NE 1/4		40	194												1984														
			SW 1/4 of NE 1/4		40	282												2884														
			SE 1/4 of NE 1/4		40	194												1984														
Arl H. Stornell			NE 1/4 of NW 1/4		40	194										1984																
			NW 1/4 of NW 1/4	Lot 1	57 76	194											1984															
			SW 1/4 of NW 1/4	Lot 2	39 68	194												1984														
			SE 1/4 of NW 1/4	less 1 ac. Sch.	37	188												1923														
Lada B. Yochum			NE 1/4 of SW 1/4		40	227										23 22																
			NW 1/4 of SW 1/4	Lot 3	59 60	194											1984															
			SW 1/4 of SW 1/4			227											23 22															
			SE 1/4 of SW 1/4			194											1984															
Amanda T. Toland			NE 1/4 of SE 1/4		40	194										1984																
			NW 1/4 of SE 1/4		40	214											27 89															
			SW 1/4 of SE 1/4		40	181											185															
			SE 1/4 of SE 1/4		40	194											1984															
					55804	3259																										

33331

1107

4106

2670 2322 - 3.48

2282 1984 - 2.98

1984

2517 2189 - 3.28

2129 1851 - 2.78

2252 1984 - 2.98

1984 1984 2884 1984

1984 1984 1984 1923

23 22 1984

1984

1984

27 89

185

1984

1984

1984

1984 1984 2884 1984

1984 1984 1984 1923

23 22 1984

1984

1984

27 89

185

1984

1984

1984

17672

17672

9381

4605

41072

4106

4106

4106

4106

4106

17672

17672

9381

4605

41072

4106

4106

4106

4106

4106

17672

17672

9381

4605

41072

4106

4106

4106

4106

4106

17672

17672

9381

4605

41072

4106

4106

4106

4106

4106

17672

17672

9381

4605

41072

4106

4106

4106

4106

4106

Tax List of Real Property in the Town of Kego

Foucher—Minnesota

IN WHOSE NAME ASSESSED	TO WHOM TRANSFERRED	Subd. for Tax	SUBDIVISION	No. of Acres		VALUATION	School No. Dist.	School District No. Rate Mills	School District No. Rate Mills	School District No. Rate Mills
				Acres	100's					
Fred L. Strinsky		1	NE 1/4 of NE 1/4	20	111.25	140				
"		2	NW 1/4 of NE 1/4			140				
"		3	SW 1/4 of NE 1/4			140				
"		4	SE 1/4 of NE 1/4			140				
Peter Gustafson		5								
John J. Toland		6	NE 1/4 of NW 1/4			140				
"		7	NW 1/4 of NW 1/4			140				
"		8	SW 1/4 of NW 1/4			140				
Peter Gustafson		9	SE 1/4 of NW 1/4			140				
"		10								
Walter A. Schmidt		11	NE 1/4 of SW 1/4							
"		12	NW 1/4 of SW 1/4			140				
"		13	SW 1/4 of SW 1/4							
"		14	SE 1/4 of SW 1/4							
Rudolph Matheis		15								
"		16	NE 1/4 of SE 1/4			140				
"		17	NW 1/4 of SE 1/4			20				
Silas Schmidt		18	SW 1/4 of SE 1/4			140				
"		19	SE 1/4 of SE 1/4			140				
		20				500				

Cass County, Minnesota, for Taxes for the Year 1922

Highway Ditch No.	Ditch No.	Ditch No.	Ditch No.	TOTAL TAXES	PAID	WHEN PAID	No. of Receipt	March Settlement	June Settlement	Penalty	November Settlement	Penalty	Collections to First Monday in January	Penalty	Delinquent on First Monday in January	REMARKS
\$ cts.	\$ cts.	\$ cts.	\$ cts.	\$ cts.		Month Day Year		\$ cts.	\$ cts.	\$ cts.	\$ cts.	\$ cts.	\$ cts.	\$ cts.	\$ cts.	
				1484		2nd Half Paid OCT 31 1923										
				1984		1st Half Paid MAY 31 1923										
				1984		2nd Half Paid OCT 31 1923	17065			3968			3968			
				1984		3rd Half Paid OCT 31 1923	5461									
				1984		4th Half Paid OCT 31 1923										
				1984		5th Half Paid OCT 31 1923										
				1984		6th Half Paid OCT 31 1923	10773									
				1984		1st Half Paid MAY 14 1923	3865			992			992			
				1984		7th Half Paid										
				1984		8th Half Paid	17672									
				1984		9th Half Paid OCT 31 1923	10773									
				1984		1st Half Paid MAY 14 1923	3865			992			992			
				1984		12th Paid in Full MAR 31 1923	3066			1984						
				2209		16th Half Paid OCT 31 1923	11534									
				992		17th Half Paid OCT 31 1923	1282			1621			1600			
				1984		18th Paid in Full MAR 31 1923	3067			3968						
				1984		19th Paid in Full MAR 31 1923										
				25025												
										5952			7552			

Tax List of Real Property in the Town of Kego

Pouche-Minneapolis

IN WHOSE NAME ASSESSED	TO WHOM TRANSFERRED	Sold for Taxes	SUBDIVISION	No. of Acres		VALUATION	No. School Dist.	School District No.	School District Rate Mills	School District No.	School District Rate Mills	School District No.	School District Rate Mills
				Sec. or Lot	Town or Block								
Miss. River Rbv. Co.			NE 1/4 of NE 1/4	32	141.28	40					194		
"			NW 1/4 of NE 1/4			40					194		
A.B. Schenck + Grace B. Schenck			SW 1/4 of NE 1/4			40					249		
John Newgard			SE 1/4 of NE 1/4			40					194		
Miss. River Rbv. Co.			NE 1/4 of NW 1/4			40					194		
"			NW 1/4 of NW 1/4			40					194		
"			SW 1/4 of NW 1/4			40					194		
"			SE 1/4 of NW 1/4			40					194		
Henry L. Hoyle			NE 1/4 of SW 1/4			40					194		
"	Sold for Taxes		NW 1/4 of SW 1/4			40					194		
"	Sold for Taxes		SW 1/4 of SW 1/4			40					194		
"	Sold for Taxes		SE 1/4 of SW 1/4			40					194		
John Gatterman	James Iverson		NE 1/4 of SE 1/4			40					194		
A.B. + Grace Schenck			NW 1/4 of SE 1/4			40					194		
Henry L. Hoyle	Sold for Taxes		SW 1/4 of SE 1/4			40					194		
John Gatterman			SE 1/4 of SE 1/4			40					194		
				640		3159							

Cass County, Minnesota, for Taxes for the Year 1922

Highway Ditch No.	Ditch No.	Ditch No.	Ditch No.	TOTAL TAXES	PAID	WHEN PAID	No. of Receipt	March Settlement	June Settlement	Penalty	November Settlement	Penalty	Collections in First Monday in January	Penalty	Delinquent on First Monday in January	REMARKS
\$ cts.	\$ cts.	\$ cts.	\$ cts.	\$ cts.		Month Day Year							\$ cts.	\$ cts.	\$ cts.	
				1984		2nd Half Paid OCT 31 1923										
				1984	1	1st Half Paid MAY 31 1923	13117						1984			
				1984	2	2nd Half Paid OCT 31 1923	6397									
				2547	3	1st Half Paid MAY 31 1923										
				1984	4	2nd Half Paid OCT 31 1923										
				1984	5	1st Half Paid MAY 7 1923	3679						2547			
				1984	6	2nd Half Paid MAY 17 1923	4077						1984			
				1984	7	1st Half Paid OCT 31 1923										
				1984	8	2nd Half Paid MAY 31 1923	13117									
				1984	9	1st Half Paid OCT 31 1923	6397						3968			
				1984	10	2nd Half Paid MAY 31 1923										
				1984	11	1st Half Paid OCT 31 1923	13117									
				1984	12	2nd Half Paid MAY 31 1923	6397						992			
				1984	13	1st Half Paid OCT 31 1923										
				1984	14	2nd Half Paid MAY 31 1923	6298						2976			
				1984	15	1st Half Paid OCT 31 1923										
				1984	16	2nd Half Paid MAY 31 1923										
				1984	17	1st Half Paid OCT 26 1923	10744						1984	179		
				1984	18	2nd Half Paid MAY 7 1923	3679						1984			
				1984	19	1st Half Paid MAY 31 1923	6398									
				1984	20	2nd Half Paid OCT 31 1923	17701									
				32307									17627			5928

Tax List of Real Property in the Town of Kego

Cass County, Minnesota, for Taxes for the Year 1922

IN WHOSE NAME ASSESSED	TO WHOM TRANSFERRED	Sold for Taxes	SUBDIVISION	Sec. or Lot	Town or Block	No. of Acres	VALUATION	No. School Dist.	School District Rate	School District Rate	School District Rate	Highway Ditch No.	Ditch No.	Ditch No.	Ditch No.	TOTAL TAXES	PAID	WHEN PAID	No. of Receipt	March Settlement	June Settlement	Penalty	November Settlement	Penalty	Collections to First Monday in January	Penalty	Delinquent on First Monday in January	REMARKS	
																													Dollars
Edmond H. Raby			NE 1/4 of NE 1/4	35	411	28	40									869	1												
Burguna Orehand Co.			NW 1/4 of NE 1/4																										
Edna Kierage			SW 1/4 of NE 1/4			25	75									1238	23	PAID											
			SE 1/4 of NE 1/4			18	05									890	4	PAID in Full	APR 24	1923	1799					1424	1738	-1.86	
Edmond H. Raby			NE 1/4 of NW 1/4			16	55									1708	6												
E. H. Tarbes			NW 1/4 of NW 1/4			38	85									232	7	PAID											
Fred H. and Leo P. Jordan			SW 1/4 of NW 1/4			41	15									1984	8	PAID in Full	NOV 30	1923	17239					26.70	2322	-3.48	
John S. and Annie B. Johnson			SE 1/4 of NW 1/4			33	45									1636	9												
Edwards Daniels			Lots 1 and 2			76	70									3590	10												
			NE 1/4 of SW 1/4			40										1984	11												
Fred H. and Leo P. Jordan			NW 1/4 of SW 1/4			42										1984	12	PAID in Full	NOV 30	1923	13403					1984	198		
Burguna Orehand Co.			SW 1/4 of SW 1/4			40										1984	13	PAID											
Geo. A. Ford			SE 1/4 of SW 1/4			40										1984	14												
			NE 1/4 of SE 1/4			40										1984	16	PAID in Full	MAY 31	1923	6915								
M. P. Ry. Co.			NW 1/4 of SE 1/4			40										1984	17												
John O. Johnson			SW 1/4 of SE 1/4			40										1984	18												
Geo. A. Ford			SE 1/4 of SE 1/4			40										1984	19												
M. P. Ry. Co.						40										1984	20												
						56380	2593									26519													
																	2874												

Added by Auditor 4/20-1925

1921+22 32.34 2812 - 4.22

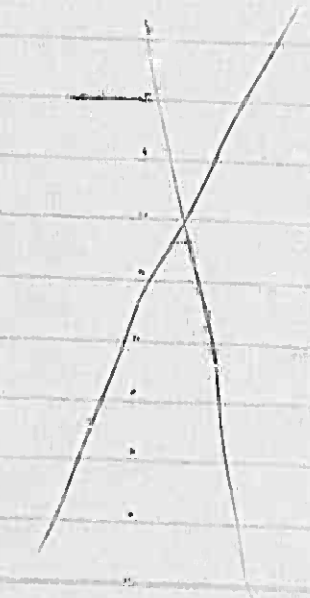
22.82 1984 - 2.98

3968

Tax List of Real Property in the Town of Kego

Cass County, Minnesota, for Taxes for the Year 1922

TO WHOM TRANSFERRED	Sold for Taxes	SUBDIVISION	Sec. or Lot	Town or Block	Rng.	No. of Acres		VALUATION	No. School Dist.	School District No.	School District Rate	School District No.	School District Rate	School District No.	School District Rate	Highway Ditch No.	Ditch No.	Ditch No.	Ditch No.	TOTAL TAXES	PAID	WHEN PAID	No. of Receipt	March Settlement	June Settlement	Penalty	November Settlement	Penalty	Collections to First Monday in January		Delinquent on First Monday in January		REMARKS						
						Acres	100's																						Dollars	cts.	cts.	cts.		cts.	cts.	cts.	cts.	cts.	cts.
Fred H. & Leo P. Jordan		Village of Longville	1	1				2													20.1	PAID in Full	NOV 30 1923																
	2							2														20.2	PAID in Full	NOV 30 1923															
	3							2														20.3	PAID in Full	NOV 30 1923															
	4							2														20.4	PAID in Full	NOV 30 1923															
	5							2														20.5	PAID in Full	NOV 30 1923															
	6							2														20.6	PAID in Full	NOV 30 1923															
	7							2														20.7	PAID in Full	NOV 30 1923															
	8							2														20.8	PAID in Full	NOV 30 1923															
	9							2														20.9	PAID in Full	NOV 30 1923															
	10							2														20.10	PAID in Full	NOV 30 1923															
J. B. Fuller			11	}			164														167	PAID in Full	NOV 30 1923																
	12																																						
Fred and Leo P. Jordan			12	}																	20.11	PAID in Full	NOV 30 1923																
	13																						20.12	PAID in Full	NOV 30 1923														
	14																						20.13	PAID in Full	NOV 30 1923														
	15																						20.14	PAID in Full	NOV 30 1923														
	16																						20.15	PAID in Full	NOV 30 1923														
	17																						20.16	PAID in Full	NOV 30 1923														
	18																						20.17	PAID in Full	NOV 30 1923														
	19																						20.18	PAID in Full	NOV 30 1923														
20																				20.19	PAID in Full	NOV 30 1923																	
								2.00												20.39																			



18403

200 30

13403

160 16

839

838

340

PAID in Full NOV 30 1923

End Half Paid OCT 31 1923

1st. Half Paid MAY 31 1923

Tax List of Real Property in the Town of Kego

Cass County, Minnesota, for Taxes for the Year 1922

Foucher—Minnesota

TO WHOM TRANSFERRED	Sec. or Lot	Town or Block	No. of Acres	VALUATION	No. School Dist.	School District No. Rate	School District No. Rate	School District No. Rate	Highway Ditch No.	Ditch No.	Ditch No.	Ditch No.	TOTAL TAXES	PAID	WHEN PAID	No. of Receipt	March Settlement	June Settlement	Penalty	November Settlement	Penalty	Collections to First Monday in January	Penalty	Delinquent on First Monday in January	REMARKS	
																										Dollars
<i>Fred A. & Leo P. Jordan</i>	1																									
	2																									
	3																									
	4																									
	5																									
	6																									
	7																									
	8																									
	9																									
	10																									
	11																									
	12																									
	13																									
	14																									
	15																									
	16																									
	17																									
	18																									
	19																									
	20																									

Village of Longville

20 1 Paid in Fall NOV 30 1923
 20 2 Paid in Fall NOV 30 1923
 20 3 Paid in Fall NOV 30 1923
 20 4 Paid in Fall NOV 30 1923
 20 5 Paid in Fall NOV 30 1923
 20 6 Paid in Fall NOV 30 1923
 20 7 Paid in Fall NOV 30 1923
 20 8 Paid in Fall NOV 30 1923
 20 9 Paid in Fall NOV 30 1923
 20 10 Paid in Fall NOV 30 1923
 20 11 Paid in Fall NOV 30 1923
 20 12 Paid in Fall NOV 30 1923
 20 13 Paid in Fall NOV 30 1923
 20 14 Paid in Fall NOV 30 1923
 20 15 Paid in Fall NOV 30 1923
 20 16 Paid in Fall NOV 30 1923
 20 17 Paid in Fall NOV 30 1923
 20 18 Paid in Fall NOV 30 1923

132/03

360 36

36

360

360

Tax List of Real Property in the Town of Kego

Cass County, Minnesota, for Taxes for the Year 1922

TO WHOM TRANSFERRED	Sold for Taxes	SUBDIVISION	Sec. or Lot	Town or Block	No. of Acres	VALUATION	No. School Dist.	School District No.	School District Rate	School District Rate	School District Rate	Highway Ditch No.	Ditch No.	Ditch No.	Ditch No.	TOTAL TAXES	PAID	WHEN PAID	No. of Receipt	March Settlement	June Settlement	Penalty	November Settlement	Penalty	Collections to First Monday in January	Penalty	Delinquent on First Monday in January	REMARKS	
																													Dollars
Margaret Frances Manders			1			7										72													
H. L. Manders			2			24										348													
			3			7										72													
William J. Sneller			4			10										102													
H. L. Manders			5			7										72													
Margaret F. Manders			6			7										72													
Max M. Manders			7			10										102													
H. L. Manders			8			7										72													
			9			17										481													
			10			7										72													
			11			7										72													
			12			7										72													
			13			7										72													
			14			7										72													
			15			7										72													
Joseph A. Hodgins			16			10										102													
Henry L. Manders			17			10										102													
Robt Forrest and L. M. Green			18			24										245													
			19																										
			20																										
						222										227													
						2149										2149													

Paul Park - See West Point part of lot 2 & 3 Sec. 26

72 1 Paid 17300
 348 2 2nd Half Paid OCT 1 1923 9750
 1st Half Paid MAY 28 1923 4619
 72 3 2nd Half Paid OCT 1 1923 4750
 1st Half Paid MAY 28 1923 4619
 102 4 Paid in Full JUL 28 1923 4750
 72 5 2nd Half Paid OCT 1 1923 4750
 1st Half Paid MAY 28 1923 4619
 72 6 Paid 17300
 102 7 1st Half Paid MAY 28 1923 4619
 2nd Half Paid OCT 1 1923
 481 8 2nd Half Paid OCT 1 1923
 1st Half Paid MAY 28 1923 9750
 72 9 2nd Half Paid OCT 1 1923
 1st Half Paid MAY 28 1923 4619
 72 10 2nd Half Paid OCT 1 1923
 1st Half Paid MAY 28 1923
 72 11 2nd Half Paid OCT 1 1923
 1st Half Paid MAY 28 1923
 72 12 2nd Half Paid OCT 1 1923
 1st Half Paid MAY 28 1923
 72 13 2nd Half Paid OCT 1 1923
 1st Half Paid MAY 28 1923
 72 14 2nd Half Paid OCT 1 1923
 1st Half Paid MAY 28 1923
 72 15 2nd Half Paid OCT 1 1923
 1st Half Paid MAY 28 1923
 102 16 Paid in Full MAY 31 1923 5817
 102 17 Paid in Full MAY 31 1923 5817
 245 18

174
 361
 102 08
 36
 36
 51
 49 51 08
 494
 493
 204
 2.82 245 .37
 996 840