

ASSESSMENT & TAX LIST

Home Brook

1944

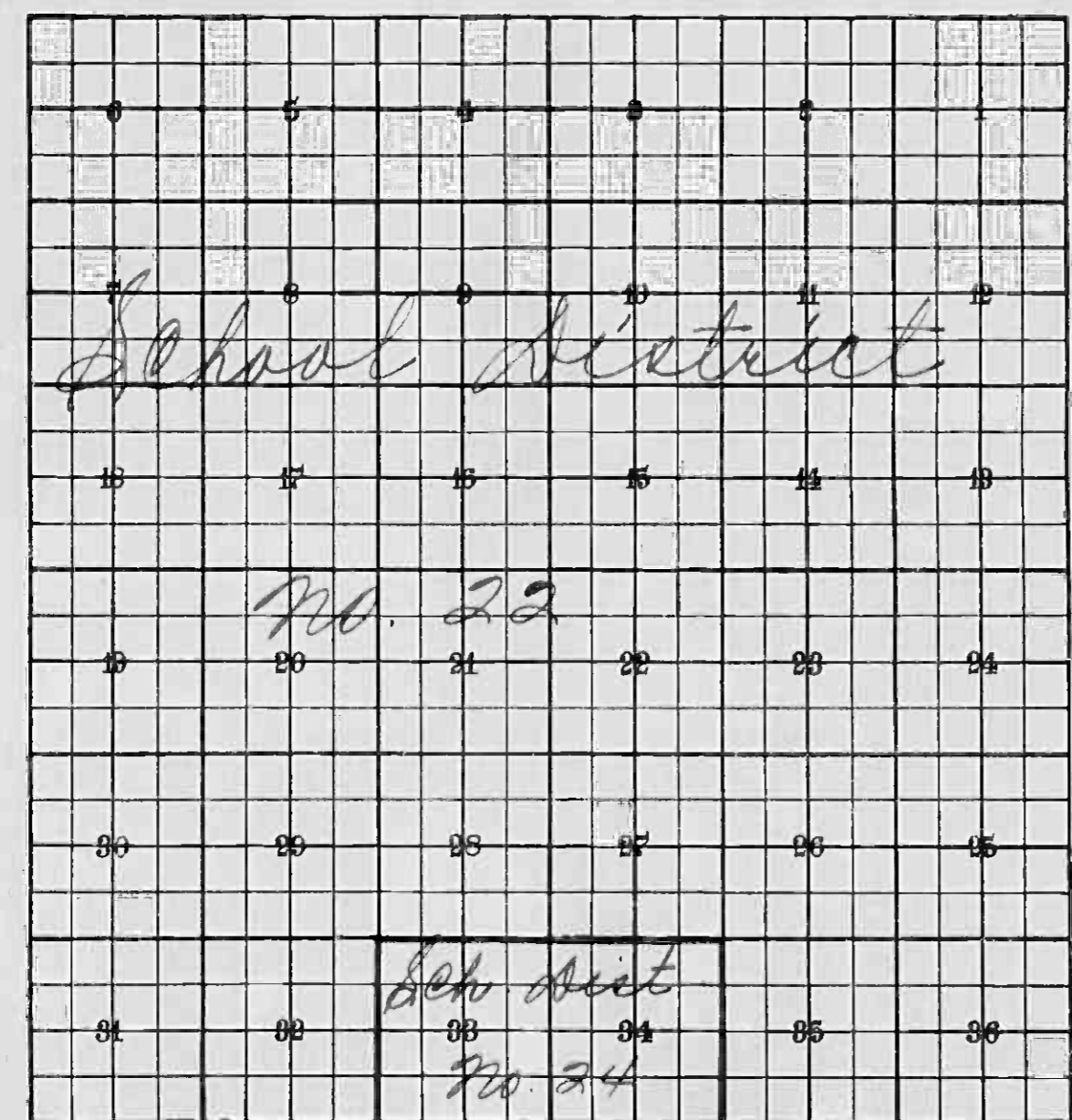
INDEX TO SECTIONS

SECTION PAGE

Sec. 1.	
" 2.	
" 3.	
" 4.	
" 5.	
" 6.	
" 7.	
" 8.	
" 9.	
" 10.	
" 11.	
" 12.	
" 13.	
" 14.	
" 15.	
" 16.	
" 17.	
" 18.	
" 19.	
" 20.	
" 21.	
" 22.	
" 23.	
" 24.	
" 25.	
" 26.	
" 27.	
" 28.	
" 29.	
" 30.	
" 31.	
" 32.	
" 33.	
" 34.	
" 35.	
" 36.	

For Convenience of Auditor in Showing Boundaries of School Districts

Township No. 135 Range No. 30 Mer. P. M.



Returns Showing Grain Received in or Handled by Elevators, Warehouses and Mills in the _____ of _____ in the _____ for the Year 1943.

NAMES OF OWNERS	Bushels of Wheat	Bushels of Soy Beans	Bushels of Flax	Total No. of Bushels of Wheat, Soy Beans and Flax	Tax of [★] 1/8 Mill per Bushel		Bushels of Corn	Bushels of Barley	Bushels of Rye	Bushels of Oats	Bushels of Buckwheat	Bushels of all Other Grains	Total No. Bushels of Corn, Barley, Rye, Oats, Buckwheat and all Other Grains	★ Tax of [★] 1/4 Mill Per Bushel		★ Total Tax		REMARKS		
					Dollars	Cts.								Dollars	Cts.					

Note ★ Assessors will not fill these Columns

Assessor's Return of Exempt Real Property in the _____ of _____ County of _____, Minnesota, for the Year 1944

FORM 3 - 1944 - 2478 - COMPANY, MINNEAPOLIS

NAMES OF OWNERS	SUBDIVISION	Sec. or Lot		Town or Block	Range	No. of Acres		FOR WHAT PURPOSE USED	ASSESSOR'S VALUATIONS					REMARKS
						Acres	100ths		True and Full Value of Land Exclusive of Structures and Improvements Dollars	STRUCTURES AND IMPROVEMENTS		Total True and Full Value of Land including all Structures, Improvements and Machinery Dollars	Assessed Value of Land including all Structures, Improvements and Machinery Dollars	
				True and Full Value of Buildings and other Structures Dollars	True and Full Value of Machinery Permanently Attached to Real Estate Dollars									
	Cory Brook	22	135	30	1			School	10	800	700	180	320	
	Ribble	4	135	30	1			"	10	600	700	140	233	
	Clower Hill	12	135	30	1			"	10	600	700	140	234	
	Cemeterie	4	135	30	1			Cemeterie	10		10		3	
										2810		170		

Assessor's Return of

NAMES OF OWNERS

Treasurer's Office, Cass County, Minnesota

RECEIVED this the first Monday (being the 2nd day) of January, A. D. 1945, of L. C. Peterson, Auditor of said County, Minnesota, the Tax List of all Taxable Real and Personal Property in the Town of Home Brook in said County for the year A. D. 1944 as specified above and amounting to _____ Dollars.

[Signature] County Treasurer.

Office of County Treasurer, Cass County, Minnesota

To L. C. Peterson, County Auditor:

Jan. 7, 1946
I herewith return to you the Tax List for the Town of Home Brook in said County for the year 1944, heretofore received from you. I certify that I have compared the same with the duplicate receipts in your office, and have written opposite the amount of each tax so received the words "First Quarter Paid", "Second Quarter Paid", "Third Quarter Paid" or "Paid in full" as the case may be, and the number of my receipt given in discharge of said tax, and each tract or lot of real property against which the taxes remain unpaid is delinquent for said year.

[Signature] County Treasurer.

Auditor's Office, Cass County, Minnesota

I, _____ Auditor of said County, and State of Minnesota, do hereby certify that the following is a correct list of the Taxes levied on the Real and Personal Property in the _____ of _____ for the year 1944.

WITNESS my hand and official seal, this _____ day of _____ 1945.

(SEAL) _____ County Auditor.

Auditor's Office, Cass County, Minnesota

194
I hereby certify that on the first Monday in January 1946, I received of _____ County Treasurer, the Tax List of the _____ of _____ in said County for the year 1944; that I have compared the said list with the Statements received for by said Treasurer, which are on file in my office, and that each tract or lot of real property therein against which the taxes, or any part thereof, remains unpaid are delinquent for said year.

(SEAL) _____ County Auditor.

NAMES OF OWNERS

TABULAR SCHEDULE OF VALUATIONS, LEVIED IN THE Township of Homebrook COUNTY OF CASS, STATE OF MINNESOTA

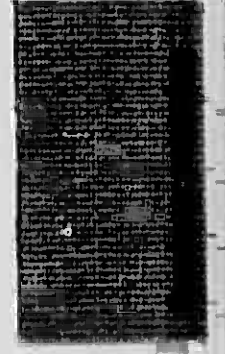
RATES AND TAXES

Table with columns for School District No., Valuation by School Districts, Rate of State Taxes, Rate of County Taxes, Rate of Town Taxes, Rate of School Taxes, and Taxes Levied (Local 1 Mill and Special School Taxes by Districts, All Other Taxes).

99.56 / 107.50

Total Number of Acres 14,338.86 State of Minnesota, ss. S. C. Peterson Auditor of said County and State of Minnesota, do hereby certify that the foregoing is a true and correct Schedule, showing the valuation of all the taxable property, in the Township of Home Brook, in said County, the several rates of Taxation and Totals of several Tax Funds levied thereon for the year A. D. 1944. Witness my hand and official seal, this 2nd day of January, A. D. 1945. S. C. Peterson County Auditor.

SEAL



Assessor's Return of

COLLECTIONS OF TAXES OF 1914, Town Home Brook, OF Home Brook, CASS COUNTY, MINNESOTA

FORM 2

NAMES OF OWNERS

FUNDS	MARCH SETTLEMENT 1914	JUNE SETTLEMENT 1914	NOV. SETTLEMENT 1914	Amount Collected from Nov. 1914 to First Monday in Jan. 1915	REDUCTIONS	Total Reductions and Collected	BALANCE UNCOLLECTED	ADDITIONS	Total Uncollected to First Monday in January, 1915
State Revenue, State School, Teachers Insurance, State Debt—Non-Homestead, State Debt—Homestead,	1983 1329	2488 3227	453 953						
County Revenue, County Road and Bridge, County Welfare, County Bond and Interest,	18654 5366 29812 16865	45298 13031 72394 40954	13383 3850 21388 12100						
Town Revenue, Town Road and Bridge, Town Drain, Town State Loan,	4259 6814 852	10342 16547 2068	3050 4389 611						
School Local 1 Mill, School Special, School State Loan,	851 326	2069 4521	611 1452						
	87811	212939	61445						

	SCHOOL DISTRICT NO.	LOCAL 1 MILL	SPECIAL	STATE LOAN	TOTALS
MARCH SETTLEMENT	School District No.				840
	22	540			
	24	11	326		337
	Totals	851	326		1177
JUNE SETTLEMENT	School District No.				1918
	22	1918			
	24	151	4521		4672
	Totals	2069	4521		6590
NOVEMBER SETTLEMENT	School District No.				606
	22	606			
	24	05	152		157
	Totals	611	152		763
NOVEMBER to JANUARY	School District No.				
	Totals				
ADDITIONS	School District No.				
	Totals				
REDUCTIONS	School District No.				
	Totals				

Assessment Roll and Tax List of Unplatted Real Property in the of Cass County, Minnesota, for Taxes for the Year 1944.

Table with columns: IN WHOSE NAME ASSESSED, TO WHOM TRANSFERRED, DESCRIPTION OF PROPERTY, ASSESSOR'S VALUATION, EQUALIZED VALUES, VALUATIONS BY SCHOOL DISTRICTS, SPECIAL TAXES, TOTAL GENERAL TAX, PAID, WHEN PAID, Number of Receipt, March Settlement 1945, June Settlement 1945, November Settlement 1945, Collections to First Monday in January 1946, Delinquent on First Monday in January 1946, Total Delinquent Tax and Penalty, REMARKS.

Assessment Roll and Tax List of Unplatted Real Property in the of Cass County, Minnesota, for Taxes for the Year 1944.

Table with columns: IN WHOSE NAME ASSESSED, TO WHOM TRANSFERRED, DESCRIPTION OF PROPERTY, ASSESSOR'S VALUATION, EQUALIZED VALUES, VALUATIONS BY SCHOOL DISTRICTS AS EQUALIZED BY DEPARTMENT OF TAXATION, Rate and Tax Less Homestead Exemption, State Tax on Non-Homestead, TOTAL GENERAL TAX, SPECIAL TAXES, TOTAL TAXES, PAID, WHEN PAID, Number of Receipt, March Settlement 1945, June Settlement 1945, Penalty, November Settlement 1945, Collections to First Monday in January 1946, Delinquent on First Monday in January 1946, Total Delinquent Tax and Penalty, REMARKS.

Assessment Roll and Tax List of Unplatted Real Property in the _____ of _____ Unplatted Real Estate Assessed at 33 1/2 Per Cent of True and Full Value; Attached Machinery at 33 1/2 Per Cent of True and Full Value, Homesteads, up to True and Full Value of \$4000, Assessable at 20 per Cent, Class 3B; Remainder at 33 1/2 Per Cent, Class 3.

Table with columns: IN WHOSE NAME ASSESSED, TO WHOM TRANSFERRED, DESCRIPTION OF PROPERTY, ASSESSOR'S VALUATION, EQUALIZED VALUES, VALUATIONS BY SCHOOL DISTRICTS AS EQUALIZED BY DEPARTMENT OF TAXATION, Rate and Tax Less Homestead Exemption, State Tax on Non-Homestead, TOTAL GENERAL TAX, SPECIAL TAXES, TOTAL TAXES, PAID, WHEN PAID, Number of Receipt, March Settlement 1945, June Settlement 1945, November Settlement 1945, Collections to First Monday in January 1946, Penalty, Delinquent on First Monday in January 1946, Total Delinquent Tax and Penalty, REMARKS.

Assessment Roll and Tax List of Unplatted Real Property in the _____ of _____

Form 4 CD, 11-20-40, REVISED

Table with columns for Description of Property, Assessor's Valuation, Equalized Values, Valuations by School Districts, and Taxes. Includes handwritten entries for property owners like John Dable, Ray Buttalaph, and Chas. Neys, with detailed tax calculations and payment records.

Assessment Roll and Tax List of Unplatted Real Property in the of Cass County, Minnesota, for Taxes for the Year 1944.

Table with columns for Assessor's Valuation, Equalized Values, School Districts, and Special Taxes. Includes handwritten entries for Ben C. Johnson and Roy Ma. Maust, and a summary row at the bottom.

Assessment Roll and Tax List of Unplatted Real Property in the _____ of _____, Unplatted Real Estate Assessed at 33 1/2 Per Cent of True and Full Value; Attached Machinery at 33 1/2 Per Cent of True and Full Value, Homesteads, up to True and Full Value of \$4000, Assessable at 20 per Cent, Class 3B; Remainder at 33 1/2 Per Cent, Class 3.

Table with columns: IN WHOSE NAME ASSESSED, TO WHOM TRANSFERRED, DESCRIPTION OF PROPERTY, ASSESSOR'S VALUATION, EQUALIZED VALUES, SOLD FOR TAXES. Includes handwritten entries for Sween Bengtson, Fred Parker, Clara C. Dossweiler, Rosa B. Parker, Fred J. Parker, and State of Minnesota.

Cass County, Minnesota, for Taxes for the Year 1944.

Table with columns: VALUATIONS BY SCHOOL DISTRICTS AS EQUALIZED BY DEPARTMENT OF TAXATION, Rate and Tax Less Homestead Exemption, State Tax on Non-Homestead, TOTAL GENERAL TAX, SPECIAL TAXES, TOTAL TAXES, PAID, WHEN PAID, Number of Receipts, March Settlement 1945, June Settlement 1945, November Settlement 1945, Collections to First Monday in January 1946, Delinquent on First Monday in January 1946, Total Delinquent Tax and Penalty, REMARKS. Includes handwritten entries for property #1 through #20.

Assessment Roll and Tax List of Unplatted Real Property in the of

Table with columns: WHOSE NAME ASSESSED, TO WHOM TRANSFERRED, DESCRIPTION OF PROPERTY, ASSESSOR'S VALUATION, EQUALIZED VALUES, SOLD FOR TAXES. Includes handwritten entries for Floyd & Joel Collins, State of Minnesota, Jullich & Cecilia Berg, Mrs. Anderson, State of Minnesota (Cous. to Albert Neuk), Mary Mullenais, and State of Minnesota.

Table with columns: VALUATIONS BY SCHOOL DISTRICTS AS EQUALIZED BY DEPARTMENT OF TAXATION, Rate and Tax Less Homestead Exemption, State Tax on Non-Homestead, TOTAL GENERAL TAX, SPECIAL TAXES, PAID, WHEN PAID, Number of Receipt, March Settlement 1945, June Settlement 1945, November Settlement 1945, Collections to First Monday in January 1946, Delinquent on First Monday in January 1946, Total Delinquent Tax and Penalty, REMARKS. Includes handwritten notes on payments and taxes.

Assessment Roll and Tax List of Unplatted Real Property in the of

Form 4 CD

Unplatted Real Estate Assessed at 33 1/2 Per Cent of True and Full Value; Attached Machinery at 33 1/2 Per Cent of True and Full Value, Homesteads, up to True and Full Value of \$4000, Assessable at 20 per Cent, Class 3B; Remainder at 33 1/2 Per Cent, Class 3.

Table with columns: IN WHOSE NAME ASSESSED, TO WHOM TRANSFERRED, SUBDIVISION, ASSESSOR'S VALUATION, EQUALIZED VALUES, VALUATIONS BY SCHOOL DISTRICTS AS EQUALIZED BY DEPARTMENT OF TAXATION, SPECIAL TAXES, TOTAL TAXES, PAID, WHEN PAID, Number of Receipt, March Settlement 1945, June Settlement 1945, Penalty, November Settlement 1945, Penalty, Collections to First Monday in January 1946, Penalty, Delinquent on First Monday in January 1946, Total Delinquent Tax and Penalty, REMARKS.

Assessment Roll and Tax List of Unplatted Real Property in the _____ of _____

Cass County, Minnesota, for Taxes for the Year 1944.

Unplatted Real Estate Assessed at 33 1/2 Per Cent of True and Full Value; Attached Machinery at 33 1/2 Per Cent of True and Full Value, Homesteads, up to True and Full Value of \$4000, Assessable at 20 per Cent, Class 3B; Remainder at 33 1/2 Per Cent, Class 3.

Form 4 CD WALKER-BELT COMPANY, MINNEAPOLIS

IN WHOSE NAME ASSESSED	TOWNSHIP TRANSFERRED	DESCRIPTION OF PROPERTY				No. Section District	Indicate Homestead Yes or No	ASSESSOR'S VALUATION						EQUALIZED VALUES			SOLD FOR TAXES	VALUATIONS BY SCHOOL DISTRICTS AS EQUALIZED BY DEPARTMENT OF TAXATION				Rate and Tax Less Homestead Exemption Mills	State Tax on Non-Homestead Mills	TOTAL GENERAL TAX	SPECIAL TAXES						TOTAL TAXES	PAID	WHEN PAID	Number of Receipt	March Settlement 1945	June Settlement 1945	November Settlement 1945	Penalty	Collections to First Monday in January 1946	Penalty	Delinquent on First Monday in January 1946	Total Delinquent Tax and Penalty	REMARKS					
		Subdivision	Sec. or Lot	Town or Block	Range			Number of Acres of Land Acres 100ths	True and Full Value of Land Exclusive of Structures and Improvements Dollars	STRUCTURES & IMPROVEMENTS True and Full Value of Buildings and Other Structures Dollars	Total True and Full Value of Land Including all Structures, Improvements and Machinery Dollars	Assessed Value of Homesteads up to \$4,000 at 30 per cent Class 3B Dollars	Assessed Value of Remainder at 33 1/2 per cent Class 3 Dollars	Total Assessed Value of Land Including all Structures, Improvements and Machinery Dollars	Total Assessed Value as Equalized by the Board of Review Dollars	Total Assessed Value as Equalized by the County Board Dollars		Total Assessed Value as Equalized by the Department of Taxation Dollars	District No. 1	District No. 2	District No. 3				District No. 4	District No. 5	District No. 6	District No. 7	District No. 8	District No. 9														District No. 10	District No. 11	District No. 12	District No. 13	District No. 14
✓ Mark & Edith Wendell		1	NE 1/4 of NE 1/4	21 135 30	40	22	yes	394		394	79			75	1	H 79	786		786	1	PAID IN FULL	MAY 24 1945																										
"		2	NW 1/4 of NE 1/4		40	"	"	252		252	50			48	2	H 50	498		498	2	PAID IN FULL	MAY 24 1945	5377																									
"		3	SW 1/4 of NE 1/4		40	"	"	252		252	50			48	3	H 50	498		498	3	PAID IN FULL	MAY 24 1945																										
"		4	SE 1/4 of NE 1/4		40	"	"	252		252	50			48	4	H 50	498		498	4	PAID IN FULL	MAY 24 1945																										
State of Minnesota		6	NE 1/4 of NW 1/4												6																																	
State of Minnesota		7	NW 1/4 of NW 1/4												7																																	
Snelling Realty Co		8	SW 1/4 of NW 1/4		40	yes	252		252	32	31			60	8	H 32	318	10	636	8	PAID IN FULL	FEB 26 1945																										
"		9	SE 1/4 of NW 1/4		40	"	240		240	43	44			82	9	H 43	438	12	878	9	PAID IN FULL	FEB 26 1945																										
"		10													10																																	
"		11	NE 1/4 of SW 1/4		40	yes	252		252	32	31			60	11	H 32	318	10	636	11	PAID IN FULL	FEB 26 1945																										
"		12	NW 1/4 of SW 1/4		40	"	252		252	32	31			60	12	H 32	318	10	636	12	PAID IN FULL	FEB 26 1945																										
"		13	SW 1/4 of SW 1/4		40	"	252		252	32	31			60	13	H 32	318	10	636	13	PAID IN FULL	FEB 26 1945																										
A.P. Davis		14	SE 1/4 of SW 1/4		40	no	252		252	32	31			80	14	84	836	24	860	14	PAID IN FULL	JUN 1 1945	6578																									
State of Minnesota		15													15																																	
✓ Mark & Edith Wendell		16	NE 1/4 of SE 1/4		40	yes	263	263	526	105			100	16	H 105	1046		1046	16	PAID IN FULL	MAY 24 1945	5387																										
"		17	NW 1/4 of SE 1/4		40	"	250		250	40	38			38	17	H 40	398		398	17	PAID IN FULL	MAY 24 1945																										
State of Minnesota		18	SW 1/4 of SE 1/4												18																																	
State of Minnesota		19	SE 1/4 of SE 1/4												19																																	
		20													20																																	
					480			3065	250	3315	518	241	759		H 545	7930	76	8006																														
								3220	263	3483	545	252			H 252																																	

1675 } 34 22 ✓

860 ✓

1444 ✓

Assessment Roll and Tax List of Unplatted Real Property in the of

Unplatted Real Estate Assessed at 33 1/2 Per Cent of True and Full Value; Attached Machinery at 33 1/2 Per Cent of True and Full Value. Homesteads, up to True and Full Value of \$4000, Assessable at 20 per Cent, Class 3B; Remainder at 33 1/2 Per Cent, Class 3.

Form 4 CD 3-11-1944 STATE OF MINNESOTA

Table with columns: IN WHOSE NAME ASSESSED, TO WHOM TRANSFERRED, SUBDIVISION, ASSESSOR'S VALUATION, EQUALIZED VALUES, and SOLD FOR TAXES. Includes handwritten entries for various property owners like Mary Fannie Kuhlman and Rose Nemes.

Table with columns: VALUATIONS BY SCHOOL DISTRICTS AS EQUALIZED BY DEPARTMENT OF TAXATION, Rate and Tax Less Homestead Exemption, State Tax on Non-Homestead, TOTAL GENERAL TAX, SPECIAL TAXES, TOTAL TAXES, PAID, WHEN PAID, Number of Receipt, March Settlement 1945, June Settlement 1945, November Settlement 1945, Collections to First Monday in January 1946, Delinquent on First Monday in January 1946, Total Delinquent Tax and Penalty, and REMARKS.

Assessment Roll and Tax List of Unplatted Real Property in the _____ of _____
 Unplatted Real Estate Assessed at 33 1/3 Per Cent of True and Full Value; Attached Machinery at 33 1/3 Per Cent of True and Full Value, Homesteads, up to True and Full Value of \$4000, Assessable at 20 per Cent, Class 3B; Remainder at 33 1/3 Per Cent, Class 3.

IN WHOSE NAME ASSESSED	TO WHOM TRANSFERRED	DESCRIPTION OF PROPERTY				No. School District	Indicate Homestead Yes or No	ASSESSOR'S VALUATION					EQUALIZED VALUES			SOLD FOR TAXES	VALUATIONS BY SCHOOL DISTRICTS AS EQUALIZED BY DEPARTMENT OF TAXATION				Rate and Tax Less Homestead Exemption	State Tax on Non-Homestead	TOTAL GENERAL TAX	SPECIAL TAXES						TOTAL TAXES	PAID	WHEN PAID	Number of Receipt	March Settlement 1945	June Settlement 1945	Penalty 1945	November Settlement 1945	Penalty 1945	Collections to First Monday in January 1946	Penalty 1946	Delinquent on First Monday in January 1946	Total Delinquent Tax and Penalty	REMARKS											
		SUBDIVISION	Sec. or Lot	Town or Block	Range			Number of Acres of Land	True and Full Value of Lands Exclusive of Structures and Improvements	STRUCTURES & IMPROVEMENTS	True and Full Value of Buildings and Other Structures	True and Full Value of Machinery Permanently Attached to Real Estate	Total True and Full Value of Lands Including all Structures, Improvements and Machinery	Assessed Value of Homesteads up to \$4,000 at 20 per cent Class 3B	Assessed Value of Remainder at 33 1/3 per cent Class 3		Total Assessed Value of Lands Including all Structures, Improvements and Machinery	Total Assessed Value as Equalized by the Board of Review	Total Assessed Value as Equalized by the County Board	Total Assessed Value as Equalized by the Department of Taxation				District No.	District No.	District No.	District No.	Rate	Rate															Rate	Rate	Mills	Mills	Mills	Mills					
																																																		Dollars	Dollars	Dollars	Dollars	Dollars
State of Minnesota		NE 1/4 of NE 1/4			23/35 30		22																																															
State of Minnesota		NW 1/4 of NE 1/4																																																				
State of Minnesota		SW 1/4 of NE 1/4																																																				
State of Minnesota		SE 1/4 of NE 1/4																																																				
Karl Zuplick		NE 1/4 of NW 1/4			40		yes	383	365	383	77						H 77		766																																			
"		NW 1/4 of NW 1/4			40		"	374	365	1056	211		662	1005	201		H 211		2100																																			
"		SW 1/4 of NW 1/4			40		"	383	365	383	77			365	73		H 77		766																																			
"		SE 1/4 of NW 1/4			40		"	383	365	383	77			365	73		H 77		766																																			
Albert D. Bierbauer		NE 1/4 of SW 1/4			40		no	252	240	252	84			240	80		H 84		836		24																																	
"		NW 1/4 of SW 1/4			40		"	252	240	252	84			240	80		H 84		836		24																																	
Glenhurst Farm Co.		SW 1/4 of SW 1/4			40		no	315	300	315	105			300	100		H 105		1046		30																																	
"		SE 1/4 of SW 1/4			40		"	315	300	315	105			300	100		H 105		1046		30																																	
Walter Schultz		NE 1/4 of SE 1/4			40		no	284	270	284	95			270	90		H 95		946		28																																	
"		NW 1/4 of SE 1/4			40		"	284	270	284	95			270	90		H 95		946		28																																	
"		SW 1/4 of SE 1/4			40		"	284	270	284	95			270	90		H 95		946		28																																	
"		SE 1/4 of SE 1/4			40		"	284	270	284	95			270	90		H 95		946		28																																	
					480			3630	630	4260	420			4475	442		H 442		11946		220																																	
								3813	662	4475	442			4475	442		M 758																																					

SOLD FOR TAXES

SOLD FOR TAXES

SOLD FOR TAXES

SOLD FOR TAXES

SOLD FOR TAXES

1076 forfeited

1076 forfeited

974 forfeited

974 forfeited

974 forfeited

Assessment Roll and Tax List of Unplatted Real Property in the of Cass County, Minnesota, for Taxes for the Year 1944.

Form 1 C.D. 1943-1944 COMPACT, MINNESOTA

Table with columns: IN WHOSE NAME ASSESSED, TO WHOM TRANSFERRED, DESCRIPTION OF PROPERTY, ASSESSOR'S VALUATION, EQUALIZED VALUES, VALUATIONS BY SCHOOL DISTRICTS AS EQUALIZED BY DEPARTMENT OF TAXATION, SPECIAL TAXES, TOTAL TAXES, PAID, WHEN PAID, Number of Receipt, March Settlement 1945, June Settlement 1945, Penalty, November Settlement 1945, Collections to First Monday in January 1946, Delinquent on First Monday in January 1946, Total Delinquent Tax and Penalty, REMARKS.

Assessment Roll and Tax List of Unplatted Real Property in the of

Form 1 CD

Unplatted Real Estate Assessed at 33 1/3 Per Cent of True and Full Value; Attached Machinery at 33 1/3 Per Cent of True and Full Value, Homesteads, up to True and Full Value of \$4000, Assessable at 20 per Cent, Class 3B; Remainder at 33 1/3 Per Cent, Class 3.

Table with columns: IN WHOSE NAME ASSESSED, TO WHOM TRANSFERRED, DESCRIPTION OF PROPERTY, ASSESSOR'S VALUATION, EQUALIZED VALUES, VALUATIONS BY SCHOOL DISTRICTS AS EQUALIZED BY DEPARTMENT OF TAXATION, Rate and Tax Less Homestead Exemption, State Tax on Non-Homestead, TOTAL GENERAL TAX, SPECIAL TAXES, TOTAL TAXES, PAID, WHEN PAID, Number of Receipt, March Settlement 1945, June Settlement 1945, Penalty, November Settlement 1945, Collections to First Monday in January 1946, Delinquent on First Monday in January 1946, Total Delinquent Tax and Penalty, REMARKS.

Assessment Roll and Tax List of Unplatted Real Property in the _____ of Cass County, Minnesota, for Taxes for the Year 1944.

Unplatted Real Estate Assessed at 33 1/3 Per Cent of True and Full Value; Attached Machinery at 33 1/3 Per Cent of True and Full Value, Homesteads, up to True and Full Value of \$4000, Assessable at 20 per Cent, Class 3B; Remainder at 33 1/3 Per Cent, Class 3.

Table with columns: IN WHOSE NAME ASSESSED, TO WHOM TRANSFERRED, DESCRIPTION OF PROPERTY, ASSESSOR'S VALUATION, EQUALIZED VALUES, VALUATIONS BY SCHOOL DISTRICTS AS EQUALIZED BY DEPARTMENT OF TAXATION, Rate and Tax, State Tax, SPECIAL TAXES, TOTAL TAXES, PAID, WHEN PAID, Number of Receipt, March Settlement, June Settlement, November Settlement, Collections to First Monday in January, Delinquent on First Monday in January, Total Delinquent Tax and Penalty, REMARKS.

State of Minnesota, State of Minnesota, Rasmus & Laura O. Bupschan, Blanket Farms, Blanket Farms Co. Ed H. Powell, Herbert Bupschan, O Rasmus B. Bupschan, Herbert H. Bupschan, James M. Livert, State of Minnesota, O Rasmus Bupschan, Blanket Farms, State of Minnesota, State of Minnesota

860 x 946, 1/2 due on 2nd half

Assessment Roll and Tax List of Unplatted Real Property in the of Cass County, Minnesota, for Taxes for the Year 1944.

Unplatted Real Estate Assessed at 33 1/3 Per Cent of True and Full Value; Attached Machinery at 33 1/3 Per Cent of True and Full Value, Homesteads, up to True and Full Value of \$4000, Assessable at 20 per Cent, Class 3B; Remainder at 33 1/3 Per Cent, Class 3.

Table with columns: IN WHOSE NAME ASSESSED, TO WHOM TRANSFERRED, DESCRIPTION OF PROPERTY, ASSESSOR'S VALUATION, EQUALIZED VALUES, SOLID FOR TAXES. Includes handwritten entries for Northwestern Land & Invest. Co., CR Beddell, and Herbert Bergschan.

Table with columns: VALUATIONS BY SCHOOL DISTRICTS AS EQUALIZED BY DEPARTMENT OF TAXATION, Rate and Tax Less Homestead Exemption, State Tax on Non-Homestead, TOTAL GENERAL TAX, SPECIAL TAXES, TOTAL TAXES, PAID, WHEN PAID, Number of Receipt, March Settlement 1945, June Settlement 1945, November Settlement 1945, Collections to First Monday in January 1946, Delinquent on First Monday in January 1946, Total Delinquent Tax and Penalty, REMARKS.

Assessment Roll and Tax List of Unplatted Real Property in the _____ of _____, Unplatted Real Estate Assessed at 33 1/3 Per Cent of True and Full Value; Attached Machinery at 33 1/3 Per Cent of True and Full Value, Homesteads, up to True and Full Value of \$1000, Assessable at 20 per Cent, Class 3B; Remainder at 33 1/3 Per Cent, Class 3.

Form 4 CD MILLER BATH COMPANY, MINNEAPOLIS

Table with columns: IN WHOSE NAME ASSESSED, TO WHOM TRANSFERRED, SUBDIVISION, ASSESSOR'S VALUATION, EQUALIZED VALUES, SOED FOR TAXES. Includes entries for Fred W. Prunalt, John E. Anderson, Harley E. Mullenix, and L. Butler.

Table with columns: VALUATIONS BY SCHOOL DISTRICTS AS EQUALIZED BY DEPARTMENT OF TAXATION, Rate and Tax Less Homestead Exemption, State Tax on Non-Homestead, TOTAL GENERAL TAX, SPECIAL TAXES, TOTAL TAXES, PAID, WHEN PAID, Number of Receipt, March Settlement 1945, June Settlement 1945, November Settlement 1945, Collections to First Monday in January 1946, Delinquent on First Monday in January 1946, Total Delinquent Tax and Penalty, REMARKS. Includes handwritten entries for districts H 50, H 236, H 84, H 79, H 74, H 158, H 74, H 69, H 53, H 21, and H 898.

Assessment Roll and Tax List of Unplatted Real Property in the of

FORM 1 C.D. BAKER-BAYNE COMPANY, MINNEAPOLIS

Unplatted Real Estate Assessed at 33 1/2 Per Cent of True and Full Value; Attached Machinery at 33 1/2 Per Cent of True and Full Value, Homesteads, up to True and Full Value of \$4000, Assessable at 20 per Cent, Class 3B; Remainder at 33 1/2 Per Cent, Class 3.

Main table with columns: IN WHOSE NAME ASSESSED, TO WHOM TRANSFERRED, SUBDIVISION, ASSESSOR'S VALUATION, EQUALIZED VALUES, SOLD FOR TAXES, VALUATIONS BY SCHOOL DISTRICTS AS EQUALIZED BY DEPARTMENT OF TAXATION, SPECIAL TAXES, TOTAL TAXES, PAID, WHEN PAID, Number of Receipt, March Settlement 1945, June Settlement 1945, November Settlement 1945, Collections to First Monday in January 1946, Delinquent on First Monday in January 1946, Total Delinquent Tax and Penalty, REMARKS.

Assessment Roll and Tax List of Unplatted Real Property in the of Cass County, Minnesota, for Taxes for the Year 1944.

Form 1 CD

Table with columns: IN WHOSE NAME ASSESSED, TO WHOM TRANSFERRED, SUBDIVISION, ASSESSOR'S VALUATION, EQUALIZED VALUES, VALUATIONS BY SCHOOL DISTRICTS AS EQUALIZED BY DEPARTMENT OF TAXATION, SPECIAL TAXES, TOTAL TAXES, PAID, WHEN PAID, Number of Receipt, March Settlement 1945, June Settlement 1945, November Settlement 1945, Collection to First Monday in January 1946, Delinquent on First Monday in January 1946, Total Delinquent Tax and Penalty, REMARKS.

Assessment Roll and Tax List of Unplatted Real Property in the of Cass County, Minnesota, for Taxes for the Year 1944.

Table with columns: IN WHOSE NAME ASSESSED, TO WHOM TRANSFERRED, DESCRIPTION OF PROPERTY, ASSESSOR'S VALUATION, EQUALIZED VALUES, VALUATIONS BY SCHOOL DISTRICTS AS EQUALIZED BY DEPARTMENT OF TAXATION, Rate and Tax Less Homestead Exemption, State Tax on Non-Homestead, TOTAL GENERAL TAX, SPECIAL TAXES, TOTAL TAXES, PAID, WHEN PAID, Number of Receipt, March Settlement 1945, June Settlement 1945, Penalty, November Settlement 1945, Collections to First Monday in January 1946, Delinquent on First Monday in January 1946, Total Delinquent Tax and Penalty, REMARKS.

