

Assessment & Tax List - 1955

Hiram

Assessment Roll and Tax List of Real Property in the Town of Hiram

Cass County, Minnesota, for Taxes for the Year 1955.

*Indicate Type of Property: R-Residential, C-Commercial, I-Industrial, U-Utility, F-Farm

Table with columns: IN WHOSE NAME ASSESSED, TO WHOM TRANSFERRED, DESCRIPTION OF PROPERTY, TRUE AND FULL VALUATIONS, ASSESSED VALUATIONS, VALUATIONS BY SCHOOL DISTRICTS AS EQUALIZED BY DEPARTMENT OF TAXATION, Tax including State Homestead, State Tax on Non-Homestead, SPECIAL TAXES, TOTAL TAXES, PAID, WHEN PAID, Number of Receipt, March Settlement 1956, June Settlement 1956, November Settlement 1956, Collections to First Monday in January 1957, Delinquent on First Monday in January 1957, Total Delinquent Tax and Penalty, REMARKS.

Linnus G. + Gladys A. Idstrom

Roy C. + Edna E. Cole
Carl A. Ryan

Joseph + Ella Welsch
Alfred E. Wook

John W. + Blanche S. Coughlin

Helen R. Dalton + Catherine Gram

Edward A. + Jessie W. Lenbrook

" " "

Dr. Helge + Rose L. Boore

D. S. + Ruth Keenan Bagley

3/4 of a pt. when the N. & S. quarter intersects the lake line of (2 acres) 1/4 mile long. pt. of line along 200' from this line, 110' westerly along lake line 340' then south 100' North to 20' of lake. Part of lot 3 & 4 use plat of Peaceful Valley, less that part of lot 3 lying E. of lot 254 7/8 of Northwoods drive & less that part of lot 4 lying S. & W. of lot 1, Peaceful Valley & W. of 16th line.

undecollected 104

Long Beach
Stacy Shores
White Pine Beach
Plainview Beach
re-arrangement of 19 of White Pine

Assessment Roll and Tax List of Real Property in the Town of *Hiram*

*Indicate Type of Property: R-Residential, C-Commercial, I-Industrial, U-Utility, F-Farm

Table with columns: IN WHOSE NAME ASSESSED, TO WHOM TRANSFERRED, DESCRIPTION OF PROPERTY, TRUE AND FULL VALUATIONS (LAND, BUILDINGS, MACHINERY, TOTAL), ASSESSED VALUATIONS (RURAL, ALL OTHER, MACHINERY, TOTAL ASSESSED), FINAL EQUALIZED VALUE.

[Continued on next page]

Cass County, Minnesota, for Taxes for the Year 1955.

Table with columns: SOLD FOR TAXES, VALUATIONS BY SCHOOL DISTRICTS AS EQUALIZED BY DEPARTMENT OF TAXATION, Tax including State Homestead, SPECIAL TAXES, TOTAL TAXES, PAID, WHEN PAID, Number of Receipt, March Settlement, June Settlement, Penalty, November Settlement, Penalty, Collections to First Monday in January 1957, Delinquent on First Monday in January 1957, Total Delinquent Tax and Penalty, REMARKS.

Long Beach, Sandy Shores, White Pine Beach, Fairview Beach, Rearrangement of 10 of White Pine

Assessment Roll and Tax List of Real Property in the Town of Hiram

*Indicate Type of Property: R-Residential, C-Commercial, I-Industrial, U-Utility, F-Farm

Table with columns: IN WHOSE NAME ASSESSED, TO WHOM TRANSFERRED, DESCRIPTION OF PROPERTY, TRUE AND FULL VALUATIONS (LAND, BUILDINGS, MACHINERY, TOTAL), ASSESSED VALUATIONS (RURAL, ALL OTHER, MACHINERY, TOTAL ASSESSED), FINAL EQUALIZED VALUE.

Cass County, Minnesota, for Taxes for the Year 1955.

Table with columns: SOLD FOR TAXES, VALUATIONS BY SCHOOL DISTRICTS AS EQUALIZED BY DEPARTMENT OF TAXATION, Tax including State Homestead, State Tax on Non-Homestead, SPECIAL TAXES, TOTAL TAXES, PAID, WHEN PAID, Number of Receipt, March Settlement 1956, June Settlement 1956, Penalty, November Settlement 1956, Collections to First Monday in January 1957, Delinquent on First Monday in January 1957, Total Delinquent Tax and Penalty, REMARKS.

Assessment Roll and Tax List of Real Property in the town of Hiram,
*Indicate Type of Property: R-Residential, C-Commercial, I-Industrial, U-Utility, F-Farm

IN WHOSE NAME ASSESSED	TO WHOM TRANSFERRED	DESCRIPTION OF PROPERTY				No. School District	Indicate Homestead Tax or No	Indicate Agricultural Tax or No	Indicate Type of Property	TRUE AND FULL VALUATIONS					Total Assessed Value as Equalized by the Board of Review	FINAL EQUALIZED VALUE				
		SUBDIVISION	Sec. or Lot	Town or Block	Number of Acres of Land					LAND Exclusive of Structures and Improvements	BUILDINGS and Other Structures	MACHINERY Permanently Attached to Real Estate	RURAL				ALL OTHER		MACHINERY Permanently Attached to Real Estate	TOTAL ASSESSED VALUE
													Acres	100ths			Homestead Up to \$4,000 20%	Over \$4,000 and Non-Homestead 33 1/3%		
Earl A. & Lorraine S. Anderson		NE 1/4 of NE 1/4		15 140 31	70	Yes	No													
		SW 1/4 of NE 1/4		100' x 250' of Lot 1	70	No	"													
W. H. Fox		SE 1/4 of NE 1/4		100' x 250' of Lot 1	70	No	"													
Eunwar & Martin J. Horn		NE 1/4 of NW 1/4		Part of Lot 1 - out of Coughlin tract	70	No	"													
John W. & Blanche S. Coughlin		SW 1/4 of NW 1/4		Part of Lot 1 - out of Coughlin tract	70	No	"													
Alfred E. Wood		SE 1/4 of NW 1/4		A tract of land 60' lying N. & E. of Lot 1, plat of Plainview	70	Yes	"													
Joseph & Ella Welsch		NE 1/4 of SW 1/4		Part of Lot 1 (about 1/2 ac.)	70	No	"													
Oscar Bakken		NW 1/4 of SW 1/4		Part of Lot 1 (about 1/2 ac.)	70	No	"													
Elizabeth Roe		SW 1/4 of SW 1/4		Part of Lot 1 (about 1/2 ac.)	70	No	"													
Edlyn, Borghild & Alex Lindmo		SE 1/4 of SW 1/4		Part of Lot 1 (about 1/2 ac.)	70	No	"													
Edna F. Kissel, Robert G. Kissel & James F. Kissel		NW 1/4 of SE 1/4		Part of Lot 1 (about 1/2 ac.)	70	No	"													
Edwin Ford Standin		SW 1/4 of SE 1/4		Part of Lot 1 (about 1/2 ac.)	70	No	"													
Laurie W. Anderson & Edlyn Standin		SE 1/4 of SE 1/4		Part of Lot 1 (about 1/2 ac.)	70	No	"													

Cass County, Minnesota, for Taxes for the Year 1955.

SOLD FOR TAXES	VALUATIONS BY SCHOOL DISTRICTS AS EQUALIZED BY DEPARTMENT OF TALSATION						Tax Including State Homestead	State Tax on Non-Homestead	SPECIAL TAXES	TOTAL TAXES	PAID	WHEN PAID	Number of Receipt	March Settlement 1956	June Settlement 1956	Penalty	November Settlement 1956	Penalty	Collections to First Monday in January 1957	Penalty	Delinquent on First Monday in January 1957	Total Delinquent Tax and Penalty	REMARKS	
	District No.	District No.	District No.	District No.	District No.	District No.																		
	Rate	Rate	Rate	Rate	Rate	Rate																		
1																								
2																								
3																								
4																								
5																								
6																								
7																								
8																								
9																								
10																								
11																								
12																								
13																								
14																								
15																								
16																								
17																								
18																								
19																								
20																								

Long Beach, Starry Shores, White Pine Beach, Haverly Beach, arrangement of 10 of White Pine B.

Assessment Roll and Tax List of Real Property in the Town of Niram, Cass County, Minnesota, for Taxes for the Year 1955.

Table with columns: IN WHOSE NAME ASSESSED, TO WHOM TRANSFERRED, DESCRIPTION OF PROPERTY, TRUE AND FULL VALUATIONS, ASSESSED VALUATIONS, FINAL EQUALIZED VALUE. Includes handwritten entries for Ernest E. & Lucy L. Patrick, Charles J. & Alice K. Altstatt, etc.

[Continued on next page] 11350

Cass County, Minnesota, for Taxes for the Year 1955.

Table with columns: SOLD FOR TAXES, VALUATIONS BY SCHOOL DISTRICTS AS EQUALIZED BY DEPARTMENT OF TAXATION, Tax including State Homestead, State Tax on Non-Homestead, SPECIAL TAXES, TOTAL TAXES, PAID, WHEN PAID, Number of Receipt, March Settlement 1956, June Settlement 1956, November Settlement 1956, Collections to First Monday in January 1957, Delinquent on First Monday in January 1957, Total Delinquent Tax and Penalty, REMARKS. Includes handwritten entries for Ernest E. & Lucy L. Patrick, Charles J. & Alice K. Altstatt, etc.

Handwritten calculations: 473, 2085, 2558, 444 = 2579, 444 = 3002, 9976, 52356, 62332, 1308, 63640

Long Beach, Sandy Shores, White Pine Beach, Plainview Beach, Rearrangement of 10 of White Pine

Assessment Roll and Tax List of Real Property in the Town of *Hiawatha* of *Hiawatha* County, Minnesota

Table with columns: IN WHOSE NAME ASSESSED, TO WHOM TRANSFERRED, DESCRIPTION OF PROPERTY, TRUE AND FULL VALUATIONS, ASSESSED VALUATIONS, FINAL EQUALIZED VALUE. Includes handwritten entries for various property owners like John Carlson, William H. & Edna L. Katz, Leo E. & Selma R. Brown, etc.

(Continued on next page)

Handwritten notes and calculations on a separate sheet of paper, including a list of property values and a vertical calculation on the right side.

Cass County, Minnesota, for Taxes for the Year 1955.

Table with columns: VALUATIONS BY SCHOOL DISTRICTS AS EQUALIZED BY DEPARTMENT OF TAXATION, TAXES, PAID, WHEN PAID, Number of Receipt, March Settlement, June Settlement, November Settlement, Delinquent on First Monday in January, Delinquent Tax and Penalty, REMARKS. Includes handwritten entries for tax payments and dates.

Vertical text on the right edge of the page: Long Beach, Shady Shores, White Pine Beach, Fairview Beach, Re-arrangement of 19 of White Pine.

IN WHOSE NAME ASSESSED	TO WHOM 1	LAND	TOTAL
Angelo Jarzypa	Robert		
Gertrude D. & Douglas A.			
Gertrude Woodbeck			
Emil H. & Margaret Gram			
Ralph E. & Florence M. Ba			
Theodore A. & Mary V. Lovel			
Floyd Bannister			
Theodore A. & Mary V. Lovel			
Anthony L. & Lucille A. S.			
Arthur Miller			
Gordon A. & Norris R. Ma			
Marlye V. Peterson			
Edward E. Nielsen			
Ralph E. & Florence M. Ba			
Arnold L. & Dorothy L. Mann			
William E. Lenk			
Ralph E. Bannister			
James J. & Agnes Hawkins			
Les. E. Brown			

SOLD FOR TAXES	VALUATIONS BY SCHOOL DISTRICTS AS EQUALIZED BY DEPARTMENT OF TAXATION						Tax including State Homestead	State Tax on Non-Homestead	SPECIAL TAXES	TOTAL TAXES	PAID	WHEN PAID	Number of Receipt	March Settlement 1956	June Settlement 1956	Penalty	November Settlement 1956	Penalty	Collections to First Monday in January 1957	Penalty	Delinquent on First Monday in January 1957	Total Delinquent Tax and Penalty	REMARKS	
	District No.	District No.	District No.	District No.	District No.	District No.																		
1							758	18		776	1	PAID IN FULL MAR 28 1956	4734		776									
2							246	06		252	2	PAID IN FULL MAY 31 1956	10359		252									
3	SOLD FOR TAXES						1596	40		1636	3										1636			
4							1556	40		1596	4	PAID IN FULL MAY 31 1956	10355		1596									
5							1372	34		1406	5	PAID IN FULL MAY 31 1956	10361		1406									
6							512	12		524	6	PAID IN FULL APR 23 1956	5555		524									
7							1248	32		1280	7	PAID IN FULL APR 23 1956	5555		1280									
8							512	12		524	8	PAID IN FULL AUG 15 1956	13805				1045	26						
9							512	12		524	9	PAID IN FULL AUG 15 1956												
10	SOLD FOR TAXES						512	12		524	10	PAID IN FULL JAN 5 1957	16712						524	42				
11	SOLD FOR TAXES						2128	54		2182	11										2182	2400		
12							1822	46		1868	12	PAID IN FULL MAY 31 1956	10360		1868									
13	SOLD FOR TAXES						2128	54		2182	13	PAID IN FULL JUL 9 1956	10540				2182							
14							512	12		524	14	PAID IN FULL MAY 31 1956	10361		524									
15							1822	46		1868	15	2nd Half Paid OCT 5 1956 1st Half Paid MAY 31 1956	1489 10356		934		934							
16							512	12		524	16	Pd DR # 28781	1-15-57	542							524	Pd		
17							1106	28		1134	17	PAID IN FULL MAY 31 1956	10354		1134									
18							1270	32		1302	18	PAID IN FULL MAY 10 1956	6090		1302									
19											19													
20											20													
							98			20124	509				20626						11596	4164	524	4342

103 46

Long Beach, Sandy Shores, White Pine Beach, Fairview Beach, Rearrangement of 19 of White Pine

ASSESSMENT ROLL AND TAX LIST OF REAL PROPERTY IN THE TOWN OF...

*Indicate Type of Property: R-Residential, C-Commercial, I-Industrial, U-Utility, F-Farm

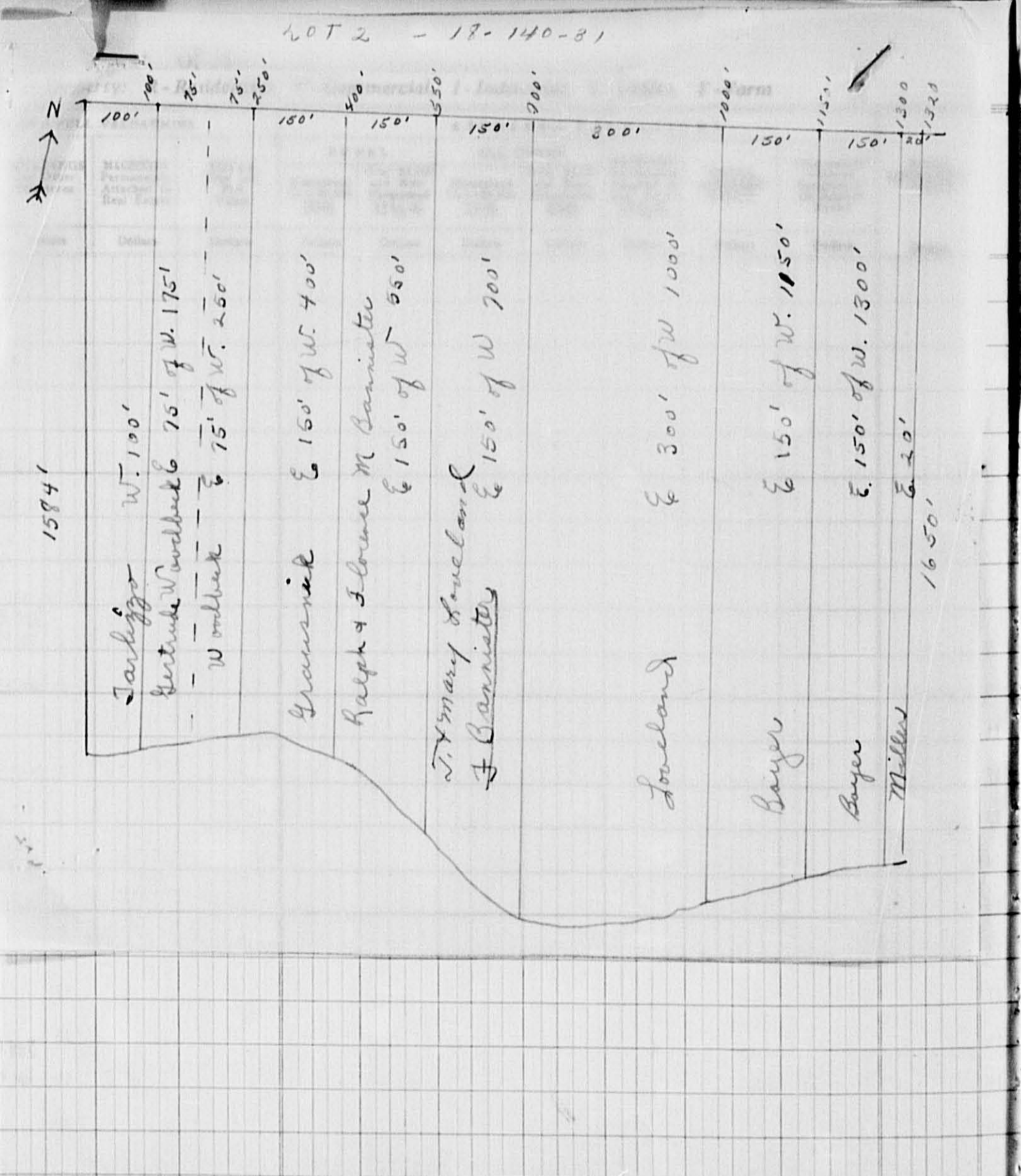
Table with columns: IN WHOSE NAME ASSESSED, TO WHOM TRANSFERRED, DESCRIPTION OF PROPERTY, TRUE AND FULL VALUATIONS, ASSESSED VALUATIONS, FINAL EQUALIZED VALUE. Includes handwritten entries for various property owners like Angelo Jarkigge, Robert Bisson, etc.

Cass County, Minnesota, for Taxes for the Year 1955.

Table with columns: VALUATIONS BY SCHOOL DISTRICTS AS EQUALIZED BY DEPARTMENT OF TAXATION, TAXES, PAID, WHEN PAID, Number of Receipt, March Settlement 1956, June Settlement 1956, Penalty, November Settlement 1956, Penalty, Collections to First Monday in January 1957, Delinquent on First Monday in January 1957, Total Delinquent Tax and Penalty, REMARKS. Includes handwritten entries for various tax payments and dates.

ASSESSMENT ROLL AND TAX LIST OF REAL PROPERTY IN THE TOWN OF...

Table with columns: IN WHOSE NAME ASSESSED, TO WHOM TRANSFERRED, SUBDIVISION, Sec. of Lot, Town or Block, Reg. No., Number of Acres of Land, No. School District, Ind. rate, Ind. rate, Ind. rate, LAND Exclusive of Structures and Improvements, Dollars.



Cass County, Minnesota, for Taxes for the Year 1955.

Table with columns: SOLD FOR TAXES, VALUATIONS BY SCHOOL DISTRICTS AS EQUALIZED BY DEPARTMENT OF TAXATION, Tax including State Homestead, State Tax on Non-Homestead, SPECIAL TAXES, TOTAL TAXES, PAID, WHEN PAID, Number of Receipt, March Settlement 1956, June Settlement 1956, November Settlement 1956, Penalty, Collections to First Monday in January 1957, Delinquent on First Monday in January 1957, Total Delinquent Tax and Penalty, REMARKS.

Assessment Roll and Tax List of Real Property in the Town of Hiram, Minnesota

Form SCD (55) JULY 1954 EDITION, MINNAPOLIS

Table with columns: IN WHOSE NAME ASSESSED, TO WHOM TRANSFERRED, DESCRIPTION OF PROPERTY, TRUE AND FULL VALUATIONS, ASSESSED VALUATIONS, FINAL EQUALIZED VALUE.

19770

Cass County, Minnesota, for Taxes for the Year 1955.

Table with columns: VALUATIONS BY SCHOOL DISTRICTS AS EQUALIZED BY DEPARTMENT OF TAXATION, Tax Including State Homestead, State Tax on Non-Homestead, SPECIAL TAXES, TOTAL TAXES, PAID, WHEN PAID, Number of Receipt, March Settlement 1956, June Settlement 1956, Penalty, November Settlement 1956, Penalty, Collections to First Monday in January 1957, Penalty, Delinquent on First Monday in January 1957, Total Delinquent Tax and Penalty, REMARKS.

Value sub. line 6, above

20060 394 20454

13957 4525

1972

Assessment Roll and Tax List of Real Property in the Town of Hiawatha, Cass County, Minnesota, for Taxes for the Year 1955.

Form SCD (55) MILLER-DAVIS COMPANY, MINNEAPOLIS

Table with columns: IN WHOSE NAME ASSESSED, TO WHOM TRANSFERRED, DESCRIPTION OF PROPERTY, TRUE AND FULL VALUATIONS, ASSESSED VALUATIONS, and FINAL EQUALIZED VALUE. Includes handwritten entries for Everett W. Chadwick, W.C. Smith, Jay Forrest, David Roslofs, Leon A. Fleischer, Clarence & Bessie Kendall, Frank M. & Lena M. Close, Katie Graves, and State of Minnesota.

Cass County, Minnesota, for Taxes for the Year 1955.

Table with columns: VALUATIONS BY SCHOOL DISTRICTS AS EQUALIZED BY DEPARTMENT OF TAXATION, TAXES, PAID, WHEN PAID, Number of Receipt, March Settlement 1956, June Settlement 1956, November Settlement 1956, Penalty, Collections to First Monday in January 1957, Delinquent on First Monday in January 1957, Total Delinquent Tax and Penalty, and REMARKS. Includes handwritten entries for various property owners and tax amounts.

Long Beach, Sandy Shores, White Pine Beach, Fairview Beach, arrangement of 19 of White Pine

Assessment Roll and Tax List of Real Property in the Town of Hiram

*Indicate Type of Property: R-Residential, C-Commercial, I-Industrial, U-Utility, F-Farm

Form 5CD (55) MULLER-PATZ COMPANY, MINNEAPOLIS

Table with columns: IN WHOSE NAME ASSESSED, TO WHOM TRANSFERRED, DESCRIPTION OF PROPERTY, TRUE AND FULL VALUATIONS (RURAL, ALL OTHER, MACHINERY), ASSESSED VALUATIONS, FINAL EQUALIZED VALUE.

Cass County, Minnesota, for Taxes for the Year 1955.

Table with columns: VALUATIONS BY SCHOOL DISTRICTS AS EQUALIZED BY DEPARTMENT OF TAXATION, Tax including State Homestead, State Tax on Non-Homestead, SPECIAL TAXES, TOTAL TAXES, PAID, WHEN PAID, Number of Receipt, March Settlement 1956, June Settlement 1956, November Settlement 1956, Collections to First Monday in January 1957, Delinquent on First Monday in January 1957, Total Delinquent Tax and Penalty, REMARKS.

Handwritten entries in the left column: State of Minnesota, John P. Sullivan, Atlas Realty Co., State of Minnesota, E. A. Sullivan, Navillus Land Co., Carl Goff, State of Minnesota, Galdie Bryant, Burton Forest, and Mellin Forest, Fay Forrest, Viola Forrest, Percy Forrest, Laurel L. + Julia R. Forrest.

Vertical text on the right edge: Long Beach, Sandy Shores, White Pine Beach, Fairview Beach, Rearrangement of 19 of White Pine.

Assessment Roll and Tax List of Real Property in the Town of Hiram, Cass County, Minnesota, for Taxes for the Year 1955.

Table with columns: IN WHOSE NAME ASSESSED, TO WHOM TRANSFERRED, DESCRIPTION OF PROPERTY, TRUE AND FULL VALUATIONS (LAND, BUILDINGS, MACHINERY, TOTAL), ASSESSED VALUATIONS (RURAL, ALL OTHER, MACHINERY, TOTAL ASSESSED), FINAL EQUALIZED VALUE.

Cass County, Minnesota, for Taxes for the Year 1955.

Table with columns: VALUATIONS BY SCHOOL DISTRICTS AS EQUALIZED BY DEPARTMENT OF TAXATION, Tax including State Homestead, State Tax on Non-Homestead, SPECIAL TAXES, TOTAL TAXES, PAID, WHEN PAID, Number of Receipt, March Settlement, June Settlement, November Settlement, Collections to First Monday in January 1957, Delinquent on First Monday in January 1957, Total Delinquent Tax and Penalty, REMARKS.

14350

Handwritten calculations: # 18, # 186 = 204, # 186 = 527, 4180, 6978, 11158, 166, 11324.

902 3001 5597

1824

Long Beach, Shady Shores, White Pine Beach, Fairview Beach, Re-arrangement of 19 of White Pine

Assessment Roll and Tax List of Real Property in the Town of Hiram, Cass County, Minnesota

Form SCD (55) 1954-1955

Table with columns: IN WHOSE NAME ASSESSED, TO WHOM TRANSFERRED, SUBDIVISION, TRUE AND FULL VALUATIONS (LAND, BUILDINGS, MACHINERY, TOTAL), ASSESSED VALUATIONS (RURAL, ALL OTHER, MACHINERY, TOTAL), FINAL EQUALIZED VALUE.

Cass County, Minnesota, for Taxes for the Year 1955.

Table with columns: VALUATIONS BY SCHOOL DISTRICTS AS EQUALIZED BY DEPARTMENT OF TAXATION, TAX INCLUDING STATE HOMESTEAD, STATE TAX ON NON-HOMESTEAD, SPECIAL TAXES, TOTAL TAXES, PAID, WHEN PAID, Number of Receipt, March Settlement 1956, June Settlement 1956, November Settlement 1956, Collections to First Monday in January 1957, Delinquent on First Monday in January 1957, Total Delinquent Tax and Penalty, REMARKS.

40

67

1372

34

1406

1406

Vertical text on the right edge of the page: King Long Beach, Shady Shores, White Pine Beach, Fairview Beach, Rearrangement of 10 of White Pine Beach

Assessment Roll and Tax List of Real Property in the Town of Hiram, Cass County, Minnesota, for Taxes for the Year 1955.

*Indicate Type of Property: R-Residential, C-Commercial, I-Industrial, U-Utility, F-Farm

Table with columns: IN WHOSE NAME ASSESSED, TO WHOM TRANSFERRED, DESCRIPTION OF PROPERTY, TRUE AND FULL VALUATIONS (LAND, BUILDINGS, MACHINERY, TOTAL), ASSESSED VALUATIONS (RURAL, ALL OTHER, MACHINERY, TOTAL ASSESSED), FINAL EQUALIZED VALUE.

Cass County, Minnesota, for Taxes for the Year 1955.

Table with columns: VALUATIONS BY SCHOOL DISTRICTS AS EQUALIZED BY DEPARTMENT OF TAXATION, Tax including State Homestead, State Tax on Non-Homestead, SPECIAL TAXES, TOTAL TAXES, PAID, WHEN PAID, Number of Receipt, March Settlement 1956, June Settlement 1956, Penalty, November Settlement 1956, Penalty, Collections to First Monday in January 1957, Penalty, Delinquent on First Monday in January 1957, Total Delinquent Tax and Penalty, REMARKS.

Long Beach

Note: Lots 1, 2 & 10 of Lot 3 are part of "Sunset Beach"

Subdivision Long Beach Lot 1 - Sec. 11-140-31

Handwritten entries for property owners: Bryng Bryngelson, Bryng, Arminda & William M. Bryngelson, J. E. & Gertrude G. Kuehl, R. G. & Pearl C. Johnson, Herman F. & Bernice Cole, Lee & Esther Ruth Robertson, Esther L. Carter, Mrs Susan Lund Champlin, "Ma." & "Mary" Louise Barblaw, Chester D. & Elizabeth Lee, J. H. Hansel.

Vertical text on the right edge: Hiram, Sturdy Shores, White Pine Beach, Hiramview Beach.

Assessment Roll and Tax List of Real Property in the Town of Hiram, Cass County, Minnesota, for Taxes for the Year 1955.

Table with columns: IN WHOSE NAME ASSESSED, TO WHOM TRANSFERRED, SUBDIVISION, DESCRIPTION OF PROPERTY, TRUE AND FULL VALUATIONS (LAND, BUILDINGS, MACHINERY, TOTAL), ASSESSED VALUATIONS (RURAL, ALL OTHER, MACHINERY, TOTAL), FINAL EQUALIZED VALUE.

Cass County, Minnesota, for Taxes for the Year 1955.

Table with columns: SOLD FOR TAXES, VALUATIONS BY SCHOOL DISTRICTS AS EQUALIZED BY DEPARTMENT OF TAXATION, Tax including State Homestead, State Tax on Non-Homestead, SPECIAL TAXES, TOTAL TAXES, PAID, WHEN PAID, Number of Receipt, March Settlement 1956, June Settlement 1956, November Settlement 1956, Collections to First Monday in January 1957, Delinquent on First Monday in January 1957, Total Delinquent Tax and Penalty, REMARKS.

Long Beach, Shady Shores

Beauregard, Fairview, Sunset Beach, White Pine Beach, Rainier Beach, 19 of White Pine Beach

Assessment Roll and Tax List of Real Property in the Town of Miami

*Indicate Type of Property: R-Residential, C-Commercial, I-Industrial, U-Utility, F-Farm

Form 5C (55) BILLS-BATH COMPANY, MINNEAPOLIS

Table with columns: IN WHOSE NAME ASSESSED, TO WHOM TRANSFERRED, SUBDIVISION, Sec. or Lot, Town or Block, Rng., Number of Acres of Land, TRUE AND FULL VALUATIONS (LAND, BUILDINGS, MACHINERY, TOTAL), ASSESSED VALUATIONS (RURAL, ALL OTHER, MACHINERY, TOTAL), Total Assessed Value, FINAL EQUALIZED VALUE.

Cass County, Minnesota, for Taxes for the Year 1955.

Table with columns: SOLD FOR TAXES, VALUATIONS BY SCHOOL DISTRICTS AS EQUALIZED BY DEPARTMENT OF TAXATION (District No., Rate, etc.), Tax including State Homestead, State Tax on Non-Homestead, SPECIAL TAXES, TOTAL TAXES, PAID, WHEN PAID, Number of Receipt, March Settlement, June Settlement, Penalty, November Settlement, Penalty, Collections to First Monday in January 1957, Delinquent on First Monday in January 1957, Total Delinquent Tax and Penalty, REMARKS.

Long Beach, Shady Shores

Shady Shores, Long Beach, Fairview Beach, Pine Beach, White Pine Beach, Sunset Beach, Richmond, Elmhurst

Assessment Roll and Tax List of Real Property in the Town of Nivam, Cass County, Minnesota, for Taxes for the Year 1955.

Form 5C (55) BULLETIN COMPANY, MINNEAPOLIS

*Indicate Type of Property: R-Residential, C-Commercial, I-Industrial, U-Utility, F-Farm

Long Beach, Shady Shores, White Pine Beach, Plainview Beach

Table with columns: IN WHOSE NAME ASSESSED, TO WHOM TRANSFERRED, SUBDIVISION (Plainview Beach), DESCRIPTION OF PROPERTY, TRUE AND FULL VALUATIONS (LAND, BUILDINGS, MACHINERY, TOTAL), ASSESSED VALUATIONS (RURAL, ALL OTHER, MACHINERY, TOTAL ASSESSED), FINAL EQUALIZED VALUE.

Cass County, Minnesota, for Taxes for the Year 1955.

Table with columns: VALUATIONS BY SCHOOL DISTRICTS AS EQUALIZED BY DEPARTMENT OF TAXATION, Tax including State Homestead, State Tax on Non-Homestead, SPECIAL TAXES, TOTAL TAXES, PAID, WHEN PAID, Number of Receipt, March Settlement, June Settlement, November Settlement, Collections to First Monday in January, Delinquent on First Monday in January, Total Delinquent Tax and Penalty, REMARKS.

Vertical text on the right edge of the page, including 'Cass County, Minnesota' and 'for Taxes for the Year 1955'.

Assessment Roll and Tax List of Real Property in the Town of Nissau, Cass County, Minnesota, for Taxes for the Year 1955.

Form 5C (55) MILLER-DAY COMPANY, MINNEAPOLIS

Table with columns: IN WHOSE NAME ASSESSED, TO WHOM TRANSFERRED, SUBDIVISION, DESCRIPTION OF PROPERTY, TRUE AND FULL VALUATIONS, ASSESSED VALUATIONS, FINAL EQUALIZED VALUE.

Cass County, Minnesota, for Taxes for the Year 1955.

Table with columns: VALUATIONS BY SCHOOL DISTRICTS AS EQUALIZED BY DEPARTMENT OF TAXATION, TAX INCLUDING STATE HOMESTEAD, SPECIAL TAXES, TOTAL TAXES, PAID, WHEN PAID, Number of Receipt, March Settlement, June Settlement, November Settlement, Collections to First Monday in January 1957, Delinquent on First Monday in January 1957, Total Delinquent Tax and Penalty, REMARKS.

Long Beach, Shady Shores, White Pine Beach, Plainview Beach, Re-arrangement of lot 19 of White Pine Beach

Elmhurst, Hammond, Sunset Beach, Charlton Beach, Peaceful Shores, Sausack Bathing Beach

Assessment Roll and Tax List of Real Property in the Town of Hiram, Cass County, Minnesota, for Taxes for the Year 1955.

Form 5C (55) BELL-DAVIS COMPANY, MINNEAPOLIS

Table with columns: IN WHOSE NAME ASSESSED, TO WHOM TRANSFERRED, SUBDIVISION, DESCRIPTION OF PROPERTY, TRUE AND FULL VALUATIONS, ASSESSED VALUATIONS, FINAL EQUALIZED VALUE.

Cass County, Minnesota, for Taxes for the Year 1955.

Table with columns: SOLD FOR TAXES, VALUATIONS BY SCHOOL DISTRICTS AS EQUALIZED BY DEPARTMENT OF TAXATION, Tax including State Homestead, State Tax on Non-Homestead, SPECIAL TAXES, TOTAL TAXES, PAID, WHEN PAID, Number of Receipt, March Settlement 1956, June Settlement 1956, Penalty, November Settlement 1956, Penalty, Collections to First Monday in January 1957, Penalty, Delinquent on First Monday in January 1957, Total Delinquent Tax and Penalty, REMARKS.

Elmhurst, Ritzmond, Shor, Sunset Beach, White Pine, Sunset Beach, Plainview Beach, White Pine Beach, Sunset View, 1st, Charlton Beach, Peaceful Shores, Kenosack, Bathin Beach

Peaceful Valley, Sunset View, 1st, Charlton Beach, Peaceful Shores, Kenosack, Bathin Beach

Assessment Roll and Tax List of Real Property in the Town of Hiram, Cass County, Minnesota, for Taxes for the Year 1955.

Table with columns: IN WHOSE NAME ASSESSED, TO WHOM TRANSFERRED, SUBDIVISION, DESCRIPTION OF PROPERTY, TRUE AND FULL VALUATIONS (LAND, BUILDINGS, MACHINERY, TOTAL), ASSESSED VALUATIONS (RURAL, ALL OTHER, MACHINERY, TOTAL), Total Assessed Value, FINAL EQUALIZED VALUE.

Cass County, Minnesota, for Taxes for the Year 1955.

Table with columns: VALUATIONS BY SCHOOL DISTRICTS AS EQUALIZED BY DEPARTMENT OF TAXATION, Tax Including State Homestead, State Tax on Non-Homestead, SPECIAL TAXES, TOTAL TAXES, PAID, WHEN PAID, Number of Receipt, March Settlement 1956, June Settlement 1956, November Settlement 1956, Penalty, Collections to First Monday in January 1957, Delinquent on First Monday in January 1957, Total Delinquent Tax and Penalty, REMARKS.

Elmhurst, Shor, Ritzmond, Sunset View, Peaceful Valley, 1st Addition to Peaceful Shores, Peaceful Shores, Kearsack, Beulah, The Pine Beach, Chariton Beach, White Pine, Sunset Beach, Plainview Beach, Element of lot in the Pine Beach

Elmhurst, Shor, Ritzmond, Sunset View, Peaceful Valley, 1st Addition to Peaceful Shores, Peaceful Shores, Kearsack, Beulah, The Pine Beach, Chariton Beach, White Pine, Sunset Beach, Plainview Beach, Element of lot in the Pine Beach

Assessment Roll and Tax List of Real Property in the Town of Hiram, Cass County, Minnesota, for Taxes for the Year 1955.

IN WHOSE NAME ASSESSED	TO WHOM TRANSFERRED	DESCRIPTION OF PROPERTY					No. School District	Indicate Homestead Yes or No	Indicate Agricultural Yes or No	Indicate Type of Property	TRUE AND FULL VALUATIONS										FINAL EQUALIZED VALUE		
		SUBDIVISION	Sec. or Lot	Town or Block	Rng.	Number of Acres of Land					LAND Exclusive of Structures and Improvements	BUILDINGS and Other Structures	MACHINERY Permanently Attached to Real Estate	TOTAL True and Full Value	RURAL		ALL OTHER		MACHINERY Permanently Attached to Real Estate	TOTAL ASSESSED VALUE		Total Assessed Value as Equalized by the Board of Review	
															Acres	100ths	Homestead Up to \$4,000 20%	Over \$4,000 and Non-Homestead 33 1/3%					Homestead Up to \$4,000 25%
		Peaceful Shores								Dollars	Dollars	Dollars	Dollars	Dollars	Dollars	Dollars	Dollars	Dollars	Dollars	Dollars	Dollars	Dollars	
Mrs. Blanche Gath			1				un	No	Yes														
Victor G. Anderson			2																				
Victor G. & Theodore G. Anderson			3																				
Frank & Jessie Green			4																				
Hackensack Lumber & Hardware Co.		Incorporated	5																				
"		"	6																				
"		"	7																				
Paul William Mosher			8																				
John F. & Alma S. Greer			9																				
"		"	10																				
"		"	11																				
C. C. Ecklund		7 1/2	12																				
Floyd E. & Philip C. Eichorn		8 1/2	12																				
Newman F. Nies			13																				
Wendal F. Nies			14																				
Newman F. Nies			15																				
Freda Nies			16																				
La Vern L. Nies			17																				
J. K. & Mollie Markfelder			18																				
Walter M. Nerschberger			19																				
			20																				

SOLD FOR TAXES	VALUATIONS BY SCHOOL DISTRICTS AS EQUALIZED BY DEPARTMENT OF TAXATION						Tax Including State Homestead	State Tax on Non-Homestead	SPECIAL TAXES	TOTAL TAXES	PAID	WHEN PAID	Number of Receipt	March Settlement 1956	June Settlement 1956	November Settlement 1956	Penalty	Collections to First Monday in January 1957	Penalty	Delinquent on First Monday in January 1957	Total Delinquent Tax and Penalty	REMARKS
	District No.	District No.	District No.	District No.	District No.	District No.																
	Rate	Rate	Rate	Rate	Rate	Rate																
	Dollars	Dollars	Dollars	Dollars	Dollars	Dollars	\$ cts.	\$ cts.	\$ cts.	\$ cts.	Month Day Year		\$ cts.	\$ cts.	\$ cts.	\$ cts.	\$ cts.	\$ cts.	\$ cts.	\$ cts.	\$ cts.	
1							24 16	62	24 78	1	PAID IN FULL	MAY 31 1956	7805		24 78							
2							25 78	64	26 42	2	PAID IN FULL	MAY 22 1956	6700		26 42							
3							3 48	08	3 56	3	PAID IN FULL	MAY 31 1956	10420		3 56							
4							13 72	34	14 06	4	PAID IN FULL	MAY 12 1956	6101		17 62							
5							3 48	08	3 56	5	PAID IN FULL	MAY 12 1956										
6							3 48	10	3 58	6	PAID IN FULL	MAY 31 1956	6855		7 16							
7							3 48	10	3 58	7	PAID IN FULL	MAY 31 1956										
8							3 48	08	3 56	8	PAID IN FULL	MAY 31 1956	10422		3 56							
9							22 52		22 52	9	2nd Half Paid	OCT 31 1956										
10							29 68	74	30 42	10	1st Half Paid	MAY 31 1956	10436		34 97						34 97	
11							16 58	42	17 00	11	2nd Half Paid	OCT 31 1956	15772									
12							16 58	42	17 00	12	1st Half Paid	MAY 31 1956	5536		17 00							
13							25 78	64	26 42	13	PAID IN FULL	APR 23 1956	5532		26 42							
14							3 48	08	3 56	14	2nd Half Paid	OCT 31 1956	15652		1 78						1 78	
15							23 34	60	23 94	15	1st Half Paid	MAY 31 1956	10434									
16							23 34	60	23 94	16	PAID IN FULL	MAY 31 1956	10426		23 94							
17							29 68	74	30 42	17	2nd Half Paid	OCT 31 1956	15652									
18							12 28	32	12 60	18	1st Half Paid	MAY 31 1956	10434		11 97							
19							26 40	66	27 06	19	PAID IN FULL	FEB 23 1956	3045	27 06								
20							21 08	54	21 62	20	2nd Half Paid	MAY 31 1956	10431		21 62							
							33 180	780	33 960					27 06	263 82						48 72	

Assessment Roll and Tax List of Real Property in the Town of Hiram, Cass County, Minnesota, for Taxes for the Year 1955.

Table with columns: IN WHOSE NAME ASSESSED, TO WHOM TRANSFERRED, SUBDIVISION, DESCRIPTION OF PROPERTY, TRUE AND FULL VALUATIONS (LAND, BUILDINGS, MACHINERY, TOTAL), ASSESSED VALUATIONS (RURAL, ALL OTHER, MACHINERY, TOTAL ASSESSED), FINAL EQUALIZED VALUE.

Cass County, Minnesota, for Taxes for the Year 1955.

Table with columns: SOLD FOR TAXES, VALUATIONS BY SCHOOL DISTRICTS AS EQUALIZED BY DEPARTMENT OF TAXATION, Tax Including State Homestead, State Tax on Non-Homestead, SPECIAL TAXES, TOTAL TAXES, PAID, WHEN PAID, Number of Receipt, March Settlement 1956, June Settlement 1956, Penalty, November Settlement 1956, Collections to First Monday in January 1957, Delinquent on First Monday in January 1957, Total Delinquent Tax and Penalty, REMARKS.

Assessment Roll and Tax List of Real Property in the Town of Hiawatha of Hiawatha County, Minnesota

*Indicate Type of Property: R-Residential, C-Commercial, I-Industrial, U-Utility, F-Farm

Table with columns: IN WHOSE NAME ASSESSED, TO WHOM TRANSFERRED, SUBDIVISION, DESCRIPTION OF PROPERTY, TRUE AND FULL VALUATIONS, ASSESSED VALUATIONS, FINAL EQUALIZED VALUE.

Cass County, Minnesota, for Taxes for the Year 1955.

Table with columns: VALUATIONS BY SCHOOL DISTRICTS AS EQUALIZED BY DEPARTMENT OF TAXATION, Tax including State Homestead, State Tax on Non-Homestead, SPECIAL TAXES, TOTAL TAXES, PAID, WHEN PAID, Number of Receipt, March Settlement 1956, June Settlement 1956, November Settlement 1956, Collections to First Monday in January 1957, Delinquent on First Monday in January 1957, Total Delinquent Tax and Penalty, REMARKS.

Elmhurst, Shor, Ritzmond, Beach, Sunset View, 1st Addition to Peaceful Shores, Hachensack Beach, Peaceful Shores, Chariton Beach, White Pine, Plainview Beach, White Pine, Peaceful Shores

Peaceful Valley, Sunset View, 1st Addition to Peaceful Shores, Hachensack Beach

Assessment Roll and Tax List of Real Property in the Town of Niram, Cass County, Minnesota, for Taxes for the Year 1955.

Peaceful Valley, Sunset View, 1st Addition to Peaceful Shores

Table with columns: WHOSE NAME ASSESSED, TO WHOM TRANSFERRED, SUBDIVISION, TRUE AND FULL VALUATIONS (LAND, BUILDINGS, MACHINERY, TOTAL), ASSESSED VALUATIONS (RURAL, ALL OTHER, MACHINERY, TOTAL), FINAL EQUALIZED VALUE.

Table with columns: SOLD FOR TAXES, VALUATIONS BY SCHOOL DISTRICTS AS EQUALIZED BY DEPARTMENT OF TAXATION, SPECIAL TAXES, TOTAL TAXES, PAID, WHEN PAID, Number of Receipt, March Settlement, June Settlement, Penalty, November Settlement, Penalty, Collections to First Monday in January, Delinquent on First Monday in January, Total Delinquent Tax and Penalty, REMARKS.

Assessment Roll and Tax List of Real Property in the Town of Huron, of Huron

*Indicate Type of Property: R-Residential, C-Commercial, I-Industrial, U-Utility, F-Farm

Form 5C (55) MILLER-BATH COMPANY, MINNEAPOLIS

Table with columns: IN WHOSE NAME ASSESSED, TO WHOM TRANSFERRED, SUBDIVISION, DESCRIPTION OF PROPERTY, TRUE AND FULL VALUATIONS, ASSESSED VALUATIONS, FINAL EQUALIZED VALUE. Includes handwritten entries for Carl A. Ryan and Everett L. Kitchinsky, Jr.

Cass County, Minnesota, for Taxes for the Year 1955.

Table with columns: SOLD FOR TAXES, VALUATIONS BY SCHOOL DISTRICTS AS EQUALIZED BY DEPARTMENT OF TAXATION, Tax including State Homestead, SPECIAL TAXES, TOTAL TAXES, PAID, WHEN PAID, Number of Receipt, March Settlement 1956, June Settlement 1956, November Settlement 1956, Collections to First Monday in January 1957, Delinquent on First Monday in January 1957, Total Delinquent Tax and Penalty, REMARKS. Includes handwritten entries for months and years.

