

Collection of Taxes of 1908, Loom of Aurora, Cass County, Minnesota

FUNDS	MARCH SETTLEMENT			JUNE SETTLEMENT			OCTOBER SETTLEMENT			TOTAL	BALANCE UNCOLLECTED
	1909			1909			1909				
State Taxes,	160			57	68		24	38			
State School,	93			30	27		14	27			
County Revenue,	380			123	05		58	05			
County Poor,	114			36	92		17	41			
County Bond,	142			46	02		21	71			
County Interest,											
County Road and Bridge,	114			36	92		17	41			
Penalty and Interest,											
Town Revenue,	342			110	74		52	24			
Town Poor,											
Town Road and Bridge,	380			123	05		58	05			
Town Delinquent Road,	270			112	45		45	07			
Special School	935			302	70		142	78			
General School (1 Mill),	76			24	61		11	61			
Court House	76			24	61		11	61			
TOTAL	2982			1023	04		474	59			

SCHOOL DISTRICTS	MARCH SETTLEMENT			JUNE SETTLEMENT			OCTOBER SETTLEMENT			TOTAL	Balance Uncollected
	Special Tax	Gen'l Tax	TOTAL	Special Tax	Gen'l Tax	TOTAL	Special Tax	Gen'l Tax	TOTAL		
School District No.											
do do											
do do											
do do											
TOTAL											

AUDITOR'S OFFICE, Cass COUNTY, MINNESOTA.

I, J.P. Byhre Auditor of Cass County and State of

Minnesota, do hereby certify that the following is a correct list of the Taxes levied on the Real and Personal property in the Town of Loom for the year 1908 (L. S.)

WITNESS my hand and official seal, the 3rd day of Jan. 1909

J.P. Byhre County Auditor

Treasurer's Office, CASS CO. County, State of Minnesota.

RECEIVED this the first Monday (being the 4 day) of January, A. D. 1909 of J.P. Byhre Auditor of CASS CO. County, Minnesota, the Tax list of all taxable Real and Personal property in the Town of Aurora in said County of CASS CO. for the year A. D. 1908, as specified above, and amounting to Eighteen hundred twenty three & 43/100 Dollars.

W.D. McKeown
Treasurer of CASS CO. County.

Tax List of Real Property in the Town of Hiram

Cass County, Minnesota, for Taxes of the Year 1908

113—PIONEER PRESS CO. (Mfg. Dept.) St. Paul, Minn.

IN WHOSE NAME ASSESSED	TO WHOM TRANSFERRED	Sold for Taxes	SUBDIVISION	Sec. or Lot	Twp. or Bl'k	No. Acres	VALUATION	GENERAL TAXES		Delinquent Road Tax		State School Bonds	Dist. No.	SCHOOL DISTRICT		TOTAL TAXES	PAID	WHEN PAID	No. Receipt	March Settlement	June Settlement	Penalty	November Settlement	Penalty	Collections to 1st Monday in January	Penalty	Delinquent on 1st Monday in January	REMARKS					
								State Sch'l. County	Town	Dist. No.	Amount of Tax			District No.	District Rate														District No.	District Rate			
							Dollars	\$	cts.	\$	cts.	\$	cts.	\$	cts.	\$	cts.	Month	Day	Year	\$	cts.	\$	cts.	\$	cts.	\$	cts.	\$	cts.			
<i>Footings brought forward.</i>																																	
<i>Henry Foy</i>			NE 1/4 of NE 1/4	3	140	31																											
	<i>Robert E De Long</i>		NW 1/4 of NE 1/4 Lot 1			8.50	79		1	15																							
			SW 1/4 of NE 1/4																														
			SE 1/4 of NE 1/4																														
<i>Chas Hinkale</i>			NE 1/4 of NW 1/4 2	"	"	12.50	43		1	22																							
<i>W. B. Walker</i>	<i>Robert E De Long</i>		NW 1/4 of NW 1/4 3			29.50	102		1	53																							
			SW 1/4 of NW 1/4																														
			SE 1/4 of NW 1/4																														
			NE 1/4 of SW 1/4																														
			NW 1/4 of SW 1/4																														
			SW 1/4 of SW 1/4																														
			SE 1/4 of SW 1/4																														
			NE 1/4 of SE 1/4																														
			NW 1/4 of SE 1/4																														
			SW 1/4 of SE 1/4																														
			SE 1/4 of SE 1/4																														
<i>Footings carried forward.</i>							57.50	274		90																							

738

Tax List of Real Property in the Town of Hiram.

Cass County, Minnesota, for Taxes of the Year 1908.

316—PIONEER PRESS CO. (Litg. Dept.) St. Paul, Minn.

IN WHOSE NAME ASSESSED	TO WHOM TRANSFERRED	Sold for Taxes	SUBDIVISION	Sec. or Lot	Twp. or Bl'k	No. Acres	VALUATION	GENERAL TAXES		Delinquent Road Tax		State School Bonds	Ditch No.	SCHOOL DISTRICT		TOTAL TAXES	PAID	WHEN PAID	No. Receipt	March Settlement	June Settlement	Penalty	November Settlement	Penalty	Collections to 1st Monday in January	Penalty	Delinquent on 1st Monday in January	REMARKS		
								State Sch'l. County. Town. School. Total.	Mills	Dist. No.	Amount of Tax			Dist. No.	Rate														Dist. No.	Rate
<i>Footings brought forward.</i>																														
T.B. Walker			NE 1/4 of NE 1/4 Lot 1	4	31	33	115																							
"			NW 1/4 of NE 1/4 " 2			33	50	117																						
			SW 1/4 of NE 1/4																											
			SE 1/4 of NE 1/4																											
T.B. Walker			NE 1/4 of NW 1/4	"	"	33	50	111																						
			NW 1/4 of NW 1/4																											
			SW 1/4 of NW 1/4																											
			SE 1/4 of NW 1/4																											
Geo. B. Leonard			Lots 4-5+6	"	"	58	50	175	2	103																				
			NE 1/4 of SW 1/4																											
			NW 1/4 of SW 1/4																											
			SW 1/4 of SW 1/4																											
			SE 1/4 of SW 1/4																											
			NE 1/4 of SE 1/4																											
			NW 1/4 of SE 1/4																											
			SW 1/4 of SE 1/4																											
			SE 1/4 of SE 1/4																											
<i>Footings carried forward.</i>																														
						158	50	524		103																				

4039

Tax List of Real Property in the Town of Hiram.

Cass County, Minnesota, for Taxes of the Year 1908.

IN WHOSE NAME ASSESSED	TO WHOM TRANSFERRED	Sold for Taxes	SUBDIVISION	Sec. or Lot	Twp. or Bl'k	No. Acres	VALUATION	GENERAL TAXES			Delinquent Road Tax		SCHOOL DISTRICT		TOTAL TAXES	PAID	WHEN PAID	No. Receipt	March Settlement	June Settlement	Penalty	November Settlement	Penalty	Collections to 1st Monday in January	Penalty	Delinquent on 1st Monday in January	REMARKS
								State	County	Town	Dist. No.	Amount of Tax	State School Bonds	Ditch No.													
<i>Footings brought forward,</i>																											
<i>J. B. Walker</i>			NE 1/4 of NE 1/4 Lot 1	6	140 31	31 65	111																				
"			NW 1/4 of NE 1/4 " 2			34 03	119																				
"			SW 1/4 of NE 1/4			80	260																				
"			SE 1/4 of NE 1/4																								
"			NE 1/4 of NW 1/4 " 3	"	"	36 41	127																				
"			NW 1/4 of NW 1/4 " 4	"	"	38 70	135																				
"			SW 1/4 of NW 1/4 " 5	"	"	39 27	138																				
"			SE 1/4 of NW 1/4	"	"	40	140																				
<i>F. E. Williams</i>			NE 1/4 of SW 1/4	"	"	40	140																				
<i>T. B. Walker</i>			NW 1/4 of SW 1/4 " 6	"	"	39 05	137																				
"			SW 1/4 of SW 1/4 " 7	"	"	38 84	135																				
<i>F. E. Williams</i>			SE 1/4 of SW 1/4	"	"	40	140																				
<i>B. F. Webster</i>			NE 1/4 of SE 1/4	"	"	40	140																				
<i>T. B. Walker</i>			NW 1/4 of SE 1/4	"	"	40	140																				
"			SW 1/4 of SE 1/4	"	"	40	140																				
"			SE 1/4 of SE 1/4	"	"	40	140																				
<i>Footings carried forward,</i>																											
						61 7 93	2142																				

*Oct 28-1911
Refrunded 1912 on #1698*

3891

Tax List of Real Property in the Town of Hiram.

Cass County, Minnesota, for Taxes of the Year 1908.

1908 - Pioneer Press Co. (Min. Dept.) St. Paul, Minn.

IN WHOSE NAME ASSESSED	TO WHOM TRANSFERRED	Sold for Taxes	SUBDIVISION	Sec. or Lot	Twp. or Bl'k	No. Acres	VALUATION	GENERAL TAXES		Delinquent Road Tax	State School Bonds	Ditch No.	SCHOOL DISTRICT		TOTAL TAXES	PAID	WHEN PAID	No. Receipt	March Settlement	June Settlement	Penalty	November Settlement	Penalty	Collections to 1st Monday in January	Penalty	Delinquent on 1st Monday in January	REMARKS				
								State Sch'l. County. Town. School. Total. Mills	Amount of Tax				District No.	District No.																	
						Dollars	\$	cts.	\$	cts.	\$	cts.	\$	cts.	Month	Day	Year	\$	cts.	\$	cts.	\$	cts.	\$	cts.	\$	cts.	\$	cts.		
Footings brought forward,																															
W. M. P. Co			NE 1/4 of NE 1/4			7 1/4 31 80	380		2	140																					
			NW 1/4 of NE 1/4																												
			SW 1/4 of NE 1/4																												
			SE 1/4 of NE 1/4																												
			NE 1/4 of NW 1/4																												
Daniel DeLury			NW 1/4 of NW 1/4 Lot 1			34 52	120		2	60																					
"			SW 1/4 of NW 1/4 " 2			34 16	120		2	60																					
"			SE 1/4 of NW 1/4			40	140		2	70																					
			NE 1/4 of SW 1/4			40	140		2	70																					
Fowler & Chapin	Southwestern Minn. Land Co.		NW 1/4 of SW 1/4			40	140		2	70																					
B. F. Nelson			SW 1/4 of SW 1/4			40	140		2	70																					
Chapman & Fowler			SE 1/4 of SW 1/4			80	280		2	140																					
			NE 1/4 of SE 1/4			80	280		2	140																					
S. W. Farnham			NW 1/4 of SE 1/4			80	280		2	140																					
"			SW 1/4 of SE 1/4			80	280		2	140																					
Chapman & Fowler			SE 1/4 of SE 1/4			80	280		2	140																					
			Footings carried forward,			588 68	1780			870																					

7479

Tax List of Real Property in the Town of Hiram.

Cass County, Minnesota, for Taxes of the Year 1908.

IN WHOSE NAME ASSESSED	TO WHOM TRANSFERRED	Sold for Taxes	SUBDIVISION	Sec. or Lot	Twp. or Bl'k	No. Acres	VALUATION	GENERAL TAXES		Delinquent Road Tax	State School Bonds	Ditch No.	SCHOOL DISTRICT		TOTAL TAXES	PAID	WHEN PAID	No. Receipt	March Settlement	June Settlement	Penalty	November Settlement	Penalty	Collections to 1st Monday in January	Penalty	Delinquent on 1st Monday in January	REMARKS					
								State Sch'l. County. Town. School. Total.	Dist. No.				Amount of Tax	District No.														District Rate				
							Dollars	\$	cts.	\$	cts.	\$	cts.	\$	cts.	Month	Day	Year	\$	cts.	\$	cts.	\$	cts.	\$	cts.	\$	cts.	\$	cts.		
<i>Footings brought forward,</i>																																
<i>Jess Williams</i>			NE 1/4 of NE 1/4 Lot 1	8	14	31	98																									
"			NW 1/4 of NE 1/4																													
"			SW 1/4 of NE 1/4																													
"			SE 1/4 of NE 1/4 " 2			31	95																									
			NE 1/4 of NW 1/4																													
			NW 1/4 of NW 1/4																													
			SW 1/4 of NW 1/4																													
			SE 1/4 of NW 1/4																													
<i>S. W. Farnham</i>			NE 1/4 of SW 1/4	"	"	160	560		2	780																						
			NW 1/4 of SW 1/4																													
			SW 1/4 of SW 1/4																													
			SE 1/4 of SW 1/4																													
<i>Chapman & Fowler</i>			NE 1/4 of SE 1/4	"	"	40	140		2	70																						
"			NW 1/4 of SE 1/4			40	140		2	70																						
"			SW 1/4 of SE 1/4			80	280		2	140																						
"			SE 1/4 of SE 1/4																													
<i>Footings carried forward,</i>							379	25	1367		560																					

362 assy 434 1
551 assy 435 4
 One-half Paid. OCT 30 1909 3299
 One-half Paid. MAY 22 1909 1315
1176
588 State Land.
 PAID IN FULL. MAY 25 1909 2043
 SW 1/4 of SE 1/4 MAY 25 1909 2043
1176
5617

Tax List of Real Property in the Town of Hiram.

Cass County, Minnesota, for Taxes of the Year 1908.

IN WHOSE NAME ASSESSED	TO WHOM TRANSFERRED	Sold for Taxes	SUBDIVISION	Sec. or Lot	Twp. or Blk	No. Acres	VALUATION	GENERAL TAXES		Delinquent Road Tax	State School Bonds	Ditch No.	SCHOOL DISTRICT		TOTAL TAXES	PAID	WHEN PAID	No. Receipt	March Settlement	June Settlement	Penalty	November Settlement	Penalty	Collections to 1st Monday in January	Penalty	Delinquent on 1st Monday in January	REMARKS					
								State	County				Dist. No.	Amount of Tax														District No.	District Rate			
			<i>Footings brought forward,</i>																													
1			NE 1/4 of NE 1/4																													
2			NW 1/4 of NE 1/4																													
3			SW 1/4 of NE 1/4																													
4			SE 1/4 of NE 1/4																													
5																																
6			NE 1/4 of NW 1/4																													
7			NW 1/4 of NW 1/4																													
8			SW 1/4 of NW 1/4																													
9			SE 1/4 of NW 1/4																													
10																																
11			NE 1/4 of SW 1/4																													
12			NW 1/4 of SW 1/4																													
13			SW 1/4 of SW 1/4 Lot 4			36	126		1	63																						
14			SE 1/4 of SW 1/4 " 3			32 50	113		1	57																						
15																																
16			NE 1/4 of SE 1/4																													
17			NW 1/4 of SE 1/4																													
18			SW 1/4 of SE 1/4 " 2			31	108		1	54																						
19			SE 1/4 of SE 1/4			40	140		1	70																						
20																																
			<i>Footings carried forward,</i>																													

Chanmark Fowler

T B Walker

529 PAID IN FULL MAY 29 1909 1823

475 PAID IN FULL MAY 29 1909 1823

373 One-half Paid. OCT 30 1909 3619

One-half Paid. MAY 29 1909 2437

588 One-half Paid. OCT 30 1909 3619

One-half Paid. MAY 29 1909 2437

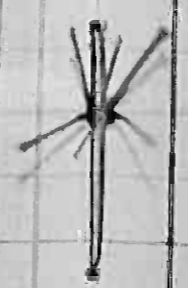
1965

Tax List of Real Property in the Town of Hiram.

313—PIONEER PRESS CO. (Sift. Dept.) St. Paul, Minn.

Cass County, Minnesota, for Taxes of the Year 1908.

IN WHOSE NAME ASSESSED	TO WHOM TRANSFERRED	Sold for Taxes	SUBDIVISION	Sec. or Lot	Twp. or Blk	Rag.	No. Acres		VALUATION	GENERAL TAXES			Delinquent Road Tax	State School Bonds	Ditch No.	SCHOOL DISTRICT		TOTAL TAXES	PAID	WHEN PAID	No. Receipt	March Settlement	June Settlement	Penalty	November Settlement	Penalty	Collections to 1st Monday in January	Penalty	Delinquent on 1st Monday in January	REMARKS									
							Acres	100ths		State	County	School				Dist. No.	Amount of Tax														District No.	District Rate	District Rate						
									Dollars	\$	cts.	\$	cts.	\$	cts.	\$	cts.	\$	cts.	Month	Day	Year	\$	cts.	\$	cts.	\$	cts.	\$	cts.	\$	cts.	\$	cts.					
			<i>Footings brought forward,</i>																																				
<i>Fowler & Chapman</i>			NE 1/4 of NE 1/4				15	40	31	40	140	1	70					588	PAID IN FULL	MAY 25 1909	20 1/2	1																	
<i>S. W. Farnham</i>			NW 1/4 of NE 1/4					40		140	1	70						588	One-half Paid	OCT 30 1909	32 5/8	2		294		294													
"			SW 1/4 of NE 1/4					40		140	1	70						588	One-half Paid	MAY 22 1909	13 1/5	2		294															
"			SE 1/4 of NE 1/4					40		140	1	70						588	One-half Paid	OCT 30 1909	32 5/8	3		294		294													
																		588	One-half Paid	MAY 22 1909	13 1/5	4		294		294													
			NE 1/4 of NW 1/4																																				
			NW 1/4 of NW 1/4																																				
			SW 1/4 of NW 1/4																																				
			SE 1/4 of NW 1/4																																				
			NE 1/4 of SW 1/4																																				
			NW 1/4 of SW 1/4																																				
			SW 1/4 of SW 1/4																																				
			SE 1/4 of SW 1/4																																				
			NE 1/4 of SE 1/4																																				
			NW 1/4 of SE 1/4																																				
			SW 1/4 of SE 1/4																																				
			SE 1/4 of SE 1/4																																				
			<i>Footings carried forward,</i>																																				
							160		560			280						2352																					



Tax List of Real Property in the Town of Hiram.

1908 - Pioneer Press Co. (Mfg. Dept.) St. Paul, Minn.

Cass County, Minnesota, for Taxes of the Year 1908.

IN WHOSE NAME ASSESSED	TO WHOM TRANSFERRED	Sold for Taxes	SUBDIVISION	Sec. or Lot	Twp. or Blk	No. Acres	VALUATION	GENERAL TAXES		Delinquent Road Tax	State School Bonds	Ditch No.	SCHOOL DISTRICT		TOTAL TAXES	PAID	WHEN PAID	No. Receipts	March Settlement	June Settlement	Penalty	November Settlement	Penalty	Collections to 1st Monday in January	Penalty	Delinquent on 1st Monday in January	REMARKS								
								State	County				District No.	District No.																					
				Acres	100ths	Dollars	\$	cts	\$	cts	\$	cts	\$	cts	\$	cts	Month	Day	Year	\$	cts	\$	cts	\$	cts	\$	cts	\$	cts	\$	cts				
Footings brought forward,																																			
			NE 1/4 of NE 1/4			161/4031																													
			NW 1/4 of NE 1/4																																
Thos Hedderly			SW 1/4 of NE 1/4 Lot 2			24	84		2	42																									
Thos Williams			SE 1/4 of NE 1/4			33 50	116																												
			NE 1/4 of NW 1/4																																
			NW 1/4 of NW 1/4																																
			SW 1/4 of NW 1/4																																
Thos Hedderly			SE 1/4 of NW 1/4																																
			Lot 3			" " " 30	180		2	52																									
			NE 1/4 of SW 1/4																																
			NW 1/4 of SW 1/4																																
"			SW 1/4 of SW 1/4																																
"			SE 1/4 of SW 1/4			40	140		2	70																									
			NE 1/4 of SE 1/4			" " " 160	560		2	280																									
			NW 1/4 of SE 1/4																																
			SW 1/4 of SE 1/4																																
			SE 1/4 of SE 1/4																																
			Footings carried forward,			287 50	1080			471																									

352 One-half Paid. 6061 21 14W 7962/1123
 429 PAID IN FULL. MAY 29 1909 23 42

718 One-half Paid. MAY 17 1909 7966/1123

1176 NW SE 1/4 1717 1/2 1/2. MAY 17 1909 7977/1123

Thos Hedderly
Thos Williams

Thos Hedderly

"

"

Tax List of Real Property in the Town of Hiram.

1908 - Pioneer Press Co. (Mfg. Dept.) St. Paul, Minn.

Cass County, Minnesota, for Taxes of the Year 1908.

IN WHOSE NAME ASSESSED	TO WHOM TRANSFERRED	Sold for Taxes	SUBDIVISION	Sec. or Lot	Twp. or Bl'k	No. Acres	VALUATION	GENERAL TAXES		Delinquent Road Tax	State School Bonds	Ditch No.	SCHOOL DISTRICT		TOTAL TAXES	PAID	WHEN PAID	No. Receipt	March Settlement	June Settlement	Penalty	November Settlement	Penalty	Collections to 1st Monday in January	Penalty	Delinquent on 1st Monday in January	REMARKS		
								State Mill	County Mill				Dist. No.	Amount of Tax														District No.	District Rate
							Dollars	\$	cts.	\$	cts.	\$	cts.	\$	cts.	Month	Day	Year	\$	cts.	\$	cts.	\$	cts.	\$	cts.	\$	cts.	
Footings brought forward,																													
Fowler & Chapman			NE 1/4 of NE 1/4			80	280		2	140																			
			NW 1/4 of NE 1/4																										
			SW 1/4 of NE 1/4																										
			SE 1/4 of NE 1/4																										
S. W. Farnham			NE 1/4 of NW 1/4			80	280		2	140																			
"			NW 1/4 of NW 1/4																										
Fowler & Chapman			SW 1/4 of NW 1/4			40	140		2	70																			
			SE 1/4 of NW 1/4																										
"			NE 1/4 of SW 1/4			40	140		2	70																			
			NW 1/4 of SW 1/4																										
"			SW 1/4 of SW 1/4																										
			SE 1/4 of SW 1/4			40	140		2	70																			
S. W. Farnham			NE 1/4 of SE 1/4 Lot 3			40	140		2	70																			
Fowler & Chapman			NW 1/4 of SE 1/4			40	140		2	70																			
"			SW 1/4 of SE 1/4			40	140		2	70																			
"			SE 1/4 of SE 1/4			40	140		2	70																			
Footings carried forward,							440	1540		770																			

6488

Tax List of Real Property in the Town of Hiram.

Cass County, Minnesota, for Taxes of the Year 1908.

IN WHOSE NAME ASSESSED	TO WHOM TRANSFERRED	Sold for Taxes	SUBDIVISION	Sec. or Lot	Twp. or Blk	Rag.	No. Acres	VALUATION	GENERAL TAXES		Delinquent Road Tax		State School Bonds	Ditch No.	SCHOOL DISTRICT		TOTAL TAXES	PAID	WHEN PAID	No. Receipt	March Settlement	June Settlement	Penalty	November Settlement	Penalty	Collections to 1st Monday in January	Penalty	Delinquent on 1st Monday in January	REMARKS		
									Mills	Mills	Dist. No.	Amount of Tax			District No.	District No.														Rate	Rate
								Dollars	\$	cts.	\$	cts.	\$	cts.	\$	cts.	\$	cts.	Month	Day	Year	\$	cts.	\$	cts.	\$	cts.	\$	cts.	\$	cts.
Footings brought forward,																															
Weyerhaeuser et al			NE 1/4 of NE 1/4				31 1/2	3180	280		3	140																			
			NW 1/4 of NE 1/4																												
H. Wilson			SW 1/4 of NE 1/4				80	280			3	140																			
			SE 1/4 of NE 1/4																												
"			NE 1/4 of NW 1/4	"	"	"	40	140			3	70																			
F. B. Davis			NW 1/4 of NW 1/4 Lot 1				39 63	138			3	70																			
"			SW 1/4 of NW 1/4 " 2				39 05	136			3	69																			
H. Wilson			SE 1/4 of NW 1/4				40	140			3	70																			
Weyerhaeuser et al			NE 1/4 of SW 1/4	"	"	"	40	140			3	70																			
Robt Davis			NW 1/4 of SW 1/4 " 3				38 47	134			3	69																			
"			SW 1/4 of SW 1/4 " 4				37 88	132			3	68																			
Wm. McVey	H. H. Berge		SE 1/4 of SW 1/4				40	140			3	70																			
Weyerhaeuser et al			NE 1/4 of SE 1/4	"	"	"	40	140			3	70																			
Wm McVey	H. H. Berge		NW 1/4 of SE 1/4				80	280			3	140																			
"			SW 1/4 of SE 1/4																												
"			SE 1/4 of SE 1/4				40	140			3	70																			
Footings carried forward,								635 03	2220			1122																			

9232

Tax List of Real Property in the Town of Hiram.

100-MORRIS PAPER CO. (Mfg. Dept.) St. Paul, Minn.

Cass County, Minnesota, for Taxes of the Year 1908.

IN WHOSE NAME ASSESSED	TO WHOM TRANSFERRED	Sold for Taxes	SUBDIVISION	Sec. or Lot	Twp. or Bl'k	No. Acres	VALUATION	GENERAL TAXES		Delinquent Road Tax	State School Bonds	Dist. No.	Ditch No.	SCHOOL DISTRICT		TOTAL TAXES	PAID	WHEN PAID	No. Receipt	March Settlement	June Settlement	Penalty	November Settlement	Penalty	Collections to 1st Monday in January	Penalty	Delinquent on 1st Monday in January	REMARKS					
								State Sch'l. County. Town. School. Total.	Dist. No.					Amount of Tax	District No.														District Rate				
						Dollars	\$	cts.	\$	cts.	\$	cts.	\$	cts.	\$	cts.	Month	Day	Year	\$	cts.	\$	cts.	\$	cts.	\$	cts.	\$	cts.				
Footings brought forward,																																	
E. M. Fowler			NE 1/4 of NE 1/4	34	140	31/160	560		2	280																							
			NW 1/4 of NE 1/4																														
			SW 1/4 of NE 1/4																														
			SE 1/4 of NE 1/4																														
			Sutherland & Munn Land Co																														
T. B. Walker			NE 1/4 of NW 1/4	"	"	40	140		4	70																							
Hansen Jensen			NW 1/4 of NW 1/4			40	870																										
T. B. Walker			SW 1/4 of NW 1/4			40	140		4	70																							
			SE 1/4 of NW 1/4			40	140		4	70																							
			NE 1/4 of SW 1/4	"	"	40	140		4	70																							
			NW 1/4 of SW 1/4			40	140		4	70																							
			SW 1/4 of SW 1/4			40	140		4	70																							
			SE 1/4 of SW 1/4			40	140		4	70																							
			NE 1/4 of SE 1/4	"	"	40	140		4	70																							
			NW 1/4 of SE 1/4			40	140		4	70																							
			SW 1/4 of SE 1/4			40	140		4	70																							
			SE 1/4 of SE 1/4			40	140		4	70																							
Footings carried forward,						560	2950			980																							

10349

Abated by No. 6900

E. M. Fowler

T. B. Walker

Hansen Jensen

T. B. Walker

Barrett & Zimmerman

M. P. L. Co

J. S. Pillsbury

Barrett & Zimmerman

W. St. C. Ry

Barrett & Zimmerman

7 1/2 NE 1/4 paid MAY 25 1909 2044

2333

One-half paid MAY 25 1909 2044

One-half paid AUG 10 1909 2910

SE 1/4 1/2 paid MAY 29 1909 2201

One-half paid OCT 30 1909 3620

One-half paid MAY 29 1909 2438

1259 PAID 8215

One-half paid OCT 30 1909 3620

One-half paid MAY 29 1909 2438

588 One-half paid OCT 30 1909 3620

588 One-half paid MAY 29 1909 2438

1176 PAID IN FULL MAY 22 1909 1333

588 PAID IN FULL MAY 25 1909 2044

588 PAID IN FULL MAY 27 1909 1622

588 PAID IN FULL MAY 22 1909 1333

588 One-half paid OCT 30 1909 3609

One-half paid MAY 25 1909 2033

588 PAID IN FULL MAY 22 1909 1333

1

2

3

4

5

6

7

8

9

10

11

12

13

14

15

16

17

18

19

20

1176

588

294

394

294

294

294

294

1176

588

588

588

588

294

294

588

Tax List of Real Property in the Town of Hiram.

Cass County, Minnesota, for Taxes of the Year 1908.

IN WHOSE NAME ASSESSED	TO WHOM TRANSFERRED	Sold for Taxes	SUBDIVISION	Sec. or Lot	Twp. or Bl'k	No. Acres	VALUATION	GENERAL TAXES			Delinquent Road Tax	State School Bonds	Dist. No.	Ditch No.	SCHOOL DISTRICT		TOTAL TAXES	PAID	WHEN PAID	No. Receipt	March Settlement	June Settlement	Penalty	November Settlement	Penalty	Collections to 1st Monday in January	Penalty	Delinquent on 1st Monday in January	REMARKS		
								State	County	School					District No.	District Rate														District Rate	
							Dollars	\$	cts.	\$	cts.	\$	cts.	\$	cts.	\$	cts.	Month	Day	Year	\$	cts.	\$	cts.	\$	cts.	\$	cts.	\$	cts.	
Footings brought forward																															
Carl Arntson			NE 1/4 of NE 1/4	35	140	31 80	280																								
"			NW 1/4 of NE 1/4																												
			SW 1/4 of NE 1/4																												
Weyerhause et al			SE 1/4 of NE 1/4			40	140		4	70																					
			NE 1/4 of NW 1/4	"	"	160	560		4	280																					
			NW 1/4 of NW 1/4																												
			SW 1/4 of NW 1/4																												
			SE 1/4 of NW 1/4																												
Weyerhause et al			NE 1/4 of SW 1/4	"	"	40	140		4	70																					
E. W. Ry Co			NW 1/4 of SW 1/4			40	140		4	70																					
W. M. & P. Ry			SW 1/4 of SW 1/4			40	140		4	70																					
G. A. Smith			SE 1/4 of SW 1/4			40	140		4	70																					
Weyerhause et al			NE 1/4 of SE 1/4	"	"	160	560		4	280																					
			NW 1/4 of SE 1/4																												
			SW 1/4 of SE 1/4																												
			SE 1/4 of SE 1/4																												
Footings carried forward							600	2100		910																					
Grand Total							12722.00	43461		18855																					

7504
188612