

ASSESSMENT & TAX LIST

Fairview

1953



















Assessment Roll and Tax List of Real Property in the Town of Fairview

Cass County, Minnesota, for Taxes for the Year 1953.

Table with columns for IN WHOSE NAME ASSESSED, TO WHOM TRANSFERRED, DESCRIPTION OF PROPERTY, TRUE AND FULL VALUATIONS, ASSESSED VALUATIONS, and FINAL EQUALIZED VALUE. Includes handwritten entries for Belle V. Hough, Milton & Marie Van Sickle, etc.

(continued on next page)

Table for VALUATIONS BY SCHOOL DISTRICTS AS EQUALIZED BY DEPARTMENT OF TAXATION. Includes columns for District No., Rate, Mills, Tax including State, State Tax on Non-Homestead, SPECIAL TAXES, TOTAL TAXES, PAID, WHEN PAID, Number of Receipt, Settlement dates (1951, 1954), and Penalties. Includes handwritten entries for 92, 100, 430, etc.





SW $\frac{1}{2}$  SW $\frac{1}{4}$  Sec. 1-13 $\frac{1}{4}$ -30 \$2.09

To be settled as current tax.

Misc. Rec. #19044

Assessment Roll and Tax List of Real Property in the Town of Fairview

Cass County, Minnesota, for Taxes for the Year 1953.

Table with columns for Property Description, Valuations (True and Full, Assessed), School District Valuations, Taxes (Selling, State, Special, Total), and Payment Status. Includes handwritten entries for lots 1-20 and various owners like Louis Martin & Netta Hope and L.W. & Zelma Sartor.



Assessment Roll and Tax List of Real Property in the District of Minnesota

IN WHOSE NAME ASSESSED	TO WHOM TRANSFERRED	DESCRIPTION OF PROPERTY				TRUE AND FULL VALUATIONS				ASSESSED VALUATIONS					FINAL EQUALIZED VALUE		
		SUBDIVISION	Sec. or Lot	Town or Block	Number of Acres of Land	LAND Exclusive of Structures and Improvements	BUILDINGS and Other Structures	MACHINERY Permanently Attached to Real Estate	TOTAL True and Full Value	RURAL		ALL OTHER		MACHINERY Permanently Attached to Real Estate		TOTAL ASSESSED VALUE	Total Assessed Value as Equalized by the Board of Review
										Homestead Up to \$4,000 20%	Over \$4,000 and Non-Homestead 33 1/3%	Homestead Up to \$4,000 25%	Over \$4,000 and Non-Homestead 40%				
<i>L. W. &amp; Zilda Dayton</i>	<i>Harvey &amp; Ruth Church of Minnesota</i>	NE 1/4 of NE 1/4 - Lot 1	4	13430	40.16												
State of Minnesota		NW 1/4 of NE 1/4 - Lot 2															
State of Minnesota		SW 1/4 of NE 1/4															
<i>L. W. &amp; Zilda Dayton</i>	<i>Harvey &amp; Ruth Church of Minnesota</i>	SE 1/4 of NE 1/4			40												
<i>Daniel Kallan</i>		NE 1/4 of NW 1/4 - Lot 3			46												
"	"	NW 1/4 of NW 1/4 - Lot 4			45.93												
"	"	SW 1/4 of NW 1/4			40												
<i>Myron E. Sandberg</i>		SE 1/4 of NW 1/4			40												
State of Minnesota		NE 1/4 of SW 1/4															
<i>H. L. Adams</i>		NW 1/4 of SW 1/4			40												
"	"	SW 1/4 of SW 1/4			40												
"	"	SE 1/4 of SW 1/4			40												
<i>Warren E. &amp; Marion C. Rogers</i>		NE 1/4 of SE 1/4			40												
State of Minnesota		NW 1/4 of SE 1/4															
<i>Warren E. &amp; Marion C. Rogers</i>		SW 1/4 of SE 1/4			40												
"	"	SE 1/4 of SE 1/4			40												
					498.9												

Cass County, Minnesota, for Taxes for the Year 1953.

SOLD FOR TAXES	VALUATIONS BY SCHOOL DISTRICTS AS EQUALIZED BY DEPARTMENT OF TAXATION						Tax Including State Homestead	State Tax on Non-Homestead	SPECIAL TAXES	TOTAL TAXES	PAID	WHEN PAID	Number of Receipts	March Settlement 1954	June Settlement 1954	November Settlement 1954	Penalty	Collections to First Monday in January 1955	Penalty	Delinquent on First Monday in January 1955	Total Delinquent Tax and Penalty	REMARKS
	District No.	District No.	District No.	District No.	District No.	District No.																
	Rate	Rate	Rate	Rate	Rate	Rate																
	Mills	Mills	Mills	Mills	Mills	Mills																
1						152	28.78	70	29.48	1	PAID IN FULL MAY 3 1954	8978		29.48								
2										2												
3										3												
4							274	51.86	1.28	53.14	4	PAID IN FULL MAY 3 1 1954	8978		53.14							
5										5												
6							92	17.42	42	17.84	6											17.84
7							92	17.42	42	17.84	7											17.84
8							80	15.14	38	15.52	8											15.52
9							97	18.36	46	18.82	9											18.82
10										10												
11										11												
12							80	15.14	38	15.52	12											15.52
13							80	15.14	38	15.52	13											15.52
14							80	15.14	38	15.52	14											15.52
15										15												
16							52	9.84		9.84	16											9.84
17										17												
18							24	4.54		4.54	18											4.54
19							40	7.58		7.58	19											7.58
20							116	21.636	4.80	22.116	20				8.262							13.154
							1023															
							1143															

Carlson's System

Birch Forest





IN WHOSE NAME ASSESSED	TO WHOM TRANSFERRED	DESCRIPTION OF PROPERTY		TRUE AND FULL VALUATIONS				ASSESSED VALUATIONS					SOLID FOR TAXES	VALUATIONS BY SCHOOL DISTRICTS AS EQUALIZED BY DEPARTMENT OF TAXATION						SPECIAL TAXES	TOTAL TAXES	PAID	WHEN PAID	Number of Receipt	March Settlement 1954	June Settlement 1954	November Settlement 1954	Collections to First Monday in January 1955	Penalty	Delinquent on First Monday in January 1955	Total Delinquent Tax and Penalty	REMARKS		
				LAND Exclusive of Structures and Improvements	BUILDINGS and Other Structures	MACHINERY Permanently Attached to Real Estate	TOTAL True and Full Value	RURAL		ALL OTHER		MACHINERY Permanently Attached to Real Estate		TOTAL ASSESSED VALUE	Total Assessed Value as Equalized by the Board of Review	District No.	District Rate	District No.	District Rate														District No.	District Rate
								Homestead Up to \$4,000 20%	Over \$4,000 and Non-Homestead 33 1/3%	Homestead Up to \$4,000 25%	Over \$4,000 and Non-Homestead 40%																							
State of Minnesota		NE 1/4 of NE 1/4	Lot 1	6	134	30																												
State of Minnesota		NW 1/4 of NE 1/4	Lot 2																															
State of Minnesota		SW 1/4 of NE 1/4																																
State of Minnesota		SE 1/4 of NE 1/4																																
		NE 1/4 of NW 1/4	Lot 3																															
<i>Raymond Horn</i>		NW 1/4 of NW 1/4	Lot 4				50	12																										
"		SW 1/4 of NW 1/4	Lot 5				50	12																										
"		SE 1/4 of NW 1/4					40																											
State of Minnesota		NE 1/4 of SW 1/4																																
State of Minnesota		NW 1/4 of SW 1/4	Lot 6																															
State of Minnesota		SW 1/4 of SW 1/4	Lot 7																															
State of Minnesota		SE 1/4 of SW 1/4																																
State of Minnesota		NE 1/4 of SE 1/4																																
State of Minnesota		NW 1/4 of SE 1/4																																
State of Minnesota		SW 1/4 of SE 1/4																																
State of Minnesota		SE 1/4 of SE 1/4																																

PAID IN FULL MAY 13 1954 } 1938 -  
PAID IN FULL MAY 13 1954 } 1938 -  
PAID IN FULL MAY 13 1954 } 1552 -

280 52 78 130 5428

140 24

Carl Yon's System Baron Forest





Assessment Roll and Tax List of Real Property in the Town of Fairview

Cass County, Minnesota, for Taxes for the Year 1953.

Table with columns for IN WHOSE NAME ASSESSED, TO WHOM TRANSFERRED, DESCRIPTION OF PROPERTY, TRUE AND FULL VALUATIONS, ASSESSED VALUATIONS, VALUATIONS BY SCHOOL DISTRICTS AS EQUALIZED BY DEPARTMENT OF TAXATION, SOLD FOR TAXES, TAXES, PAID, WHEN PAID, Number of Receipt, March Settlement 1954, June Settlement 1954, November Settlement 1954, Collections to First Monday in January 1955, Delinquent on First Monday in January 1955, Total Delinquent Tax and Penalty, REMARKS.









SW $\frac{1}{2}$  NW $\frac{1}{4}$  AND NW $\frac{1}{4}$  SW $\frac{1}{2}$  Sec. 12-134-30 \$1.00

To be settled as current tax.

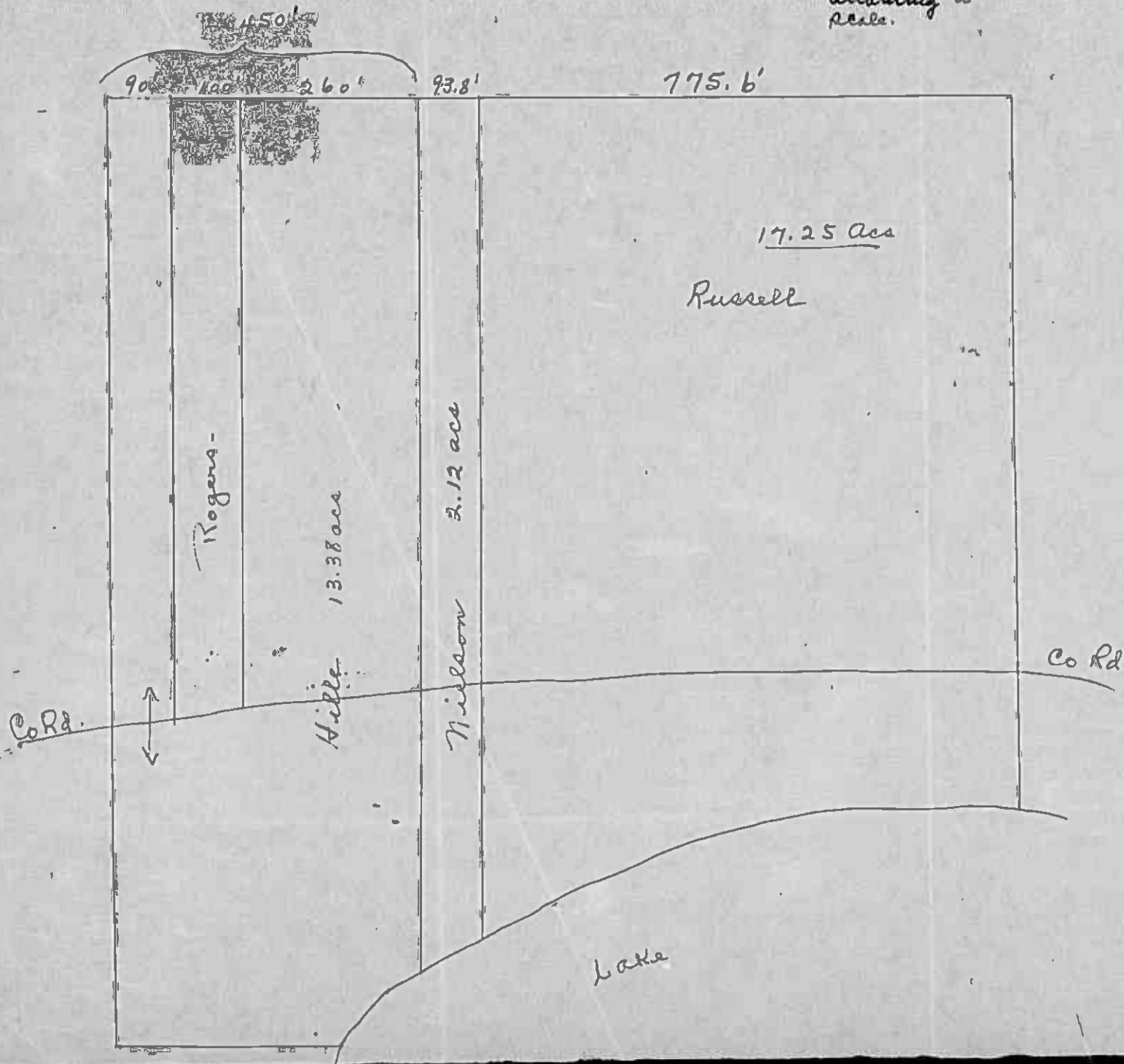
Misc. Rec. #19044



Section 13-134-30

Lot 4

20 Scale  
Hwy not placed  
according to  
scale.







Assessment Roll and Tax List of Real Property in the Town of Fairview of Fairview

Cass County, Minnesota, for Taxes for the Year 1953.

IN WHOSE NAME ASSESSED	TO WHOM TRANSFERRED	DESCRIPTION OF PROPERTY						TRUE AND FULL VALUATIONS						FINAL EQUALIZED VALUE Dollars	SOLD FOR TAXES	VALUATIONS BY SCHOOL DISTRICTS AS EQUALIZED BY DEPARTMENT OF TAXATION												REMARKS																																
		SUBDIVISION	Sec. of Lot	Town or Block	No. of Acres of Land	No. of School Districts	Indicate Improved Yes or No	Indicate Agricultural Yes or No	LAND Exclusive of Structures and Improvements Dollars	BUILDINGS and Other Structures Dollars	MACHINERY Permanently Attached to Real Estate Dollars	TOTAL True and Full Value Dollars	RURAL			ALL OTHER		MACHINERY Permanently Attached to Real Estate 33 1/3 % Dollars	TOTAL ASSESSED VALUE Dollars	Total Assessed Value as Equalized by the Board of Review Dollars	VALUATIONS BY SCHOOL DISTRICTS AS EQUALIZED BY DEPARTMENT OF TAXATION						SPECIAL TAXES \$ cts.		TOTAL TAXES \$ cts.	PAID	WHEN PAID Month Day Year	Number of Receipt	March Settlement 1954 \$ cts.	June Settlement 1954 \$ cts.	November Settlement 1954 \$ cts.	Penalty \$ cts.	Collections to First Monday in January 1955 \$ cts.	Penalty \$ cts.	Delinquent on First Monday in January 1955 \$ cts.	Total Delinquent Tax and Penalty \$ cts.																				
													Homestead Up to \$4,000 20%			Over \$4,000 and Non-Homestead 33 1/3 %	Homestead Up to \$4,000 25%				Over \$4,000 and Non-Homestead 40%	District No.	District No.	District No.	District No.	District No.															District No.	Rate	Rate	Rate	Rate	Rate	Rate													
State of Minnesota		NE 1/4 of N E 1/4			76.13430	12-15																																																						
State of Minnesota		NW 1/4 of N E 1/4 Lot 2																																																										
State of Minnesota		SW 1/4 of N E 1/4																																																										
State of Minnesota		SE 1/4 of N E 1/4																																																										
State of Minnesota	Guustav Peterson	NE 1/4 of N W 1/4 Lot 1			12																																																							
State of Minnesota		NW 1/4 of N W 1/4																																																										
State of Minnesota		SW 1/4 of N W 1/4 Lot 4																																																										
State of Minnesota		SE 1/4 of N W 1/4 Lot 3																																																										
State of Minnesota		NE 1/4 of SW 1/4																																																										
State of Minnesota		NW 1/4 of SW 1/4																																																										
State of Minnesota		SW 1/4 of SW 1/4																																																										
State of Minnesota		SE 1/4 of SW 1/4																																																										
State of Minnesota		NE 1/4 of SE 1/4																																																										
State of Minnesota		NW 1/4 of SE 1/4																																																										
State of Minnesota		SW 1/4 of SE 1/4																																																										
State of Minnesota		SE 1/4 of SE 1/4																																																										

134-10

Carlson's System  
Arith Forest















# Assessment Roll and Tax List of Real Property in the Town of Fairview

# Cass County, Minnesota, for Taxes for the Year 1953.

IN WHOSE NAME ASSESSED	TO WHOM TRANSFERRED	DESCRIPTION OF PROPERTY				TRUE AND FULL VALUATIONS					ASSESSED VALUATIONS					FINAL EQUALIZED VALUE	VALUATIONS BY SCHOOL DISTRICTS AS EQUALIZED BY DEPARTMENT OF TAXATION													REMARKS																						
		SUBDIVISION	Sec. or Lot	Town or Block	No. of Acres of Land	LAND Exclusive of Structures and Improvements	BUILDINGS and Other Structures	MACHINERY Permanently Attached to Real Estate	TOTAL True and Full Value	RURAL		ALL OTHER		MACHINERY Permanently Attached to Real Estate	TOTAL ASSESSED VALUE		Total Assessed Value as Equalized by the Board of Review	District No.	District Rate	District No.	District Rate	District No.	District Rate	Tax including State Homestead	State Tax on Non-Homestead	SPECIAL TAXES	TOTAL TAXES	PAID	WHEN PAID		Number of Receipts	March Settlement 1954	June Settlement 1954	Penalty	November Settlement 1954	Penalty	Collections to First Monday in January 1955	Penalty	Delinquent on First Monday in January 1955	Total Delinquent Tax and Penalty												
										Homestead Up to \$4,000 20%	Over \$4,000 and Non-Homestead 33 1/3%	Homestead Up to \$4,000 25%	Over \$4,000 and Non-Homestead 40%																												Dollars	Dollars	Dollars	Dollars	Dollars	Dollars	Dollars	Dollars	Dollars	Dollars		
Alma M. Fenster	State of Minnesota	NE 1/4 of NE 1/4	23	13430	40																					1	PAID IN FULL	MAY 3 1954	8996																							
Alma Fletcher		SW 1/4 of NE 1/4			40																						2																									
Chas. St. & Mary G. Fletcher		SE 1/4 of NE 1/4			40																																															
Delphine Hall	State of Minnesota	NE 1/4 of NW 1/4			40																																															
State of Minnesota		NW 1/4 of NW 1/4			40																																															
State of Minnesota		SE 1/4 of NW 1/4			40																																															
Lee Bishop & Sherman Stolkenberg		NE 1/4 of SW 1/4			40																																															
State of Minnesota		SW 1/4 of SW 1/4			40																																															
Vernon & Irene Griffiths		NE 1/4 of SW 1/4			40																																															
Gull Lake Shores, Inc		NE 1/4 of SE 1/4			40																																															
F.R. Dixon		NW 1/4 of SE 1/4			40																																															
Gull Lake Shores, Inc		SW 1/4 of SE 1/4			40																																															
State of Minnesota		SW 1/4 of SE 1/4			39.40																																															
State of Minnesota		SW 1/4 of SE 1/4			40																																															
Helen & Emma Lippa		SW 1/4 of SE 1/4			40																																															

Carlson's System  
Baron Forest

Assessment Roll and Tax List of Real Property in the Town of Fairview

Form 501 (53) BELL & HOWE COMPANY, MINNEAPOLIS

IN WHOSE NAME ASSESSED	TO WHOM TRANSFERRED	DESCRIPTION OF PROPERTY				TRUE AND FULL VALUATIONS			ASSESSED VALUATIONS					FINAL EQUALIZED VALUE			
		SUBDIVISION	Sec. or Lot	Town or Block	Number of Acres of Land	LAND Exclusive of Structures and Improvements	BUILDINGS and Other Structures	MACHINERY Permanently Attached to Real Estate	TOTAL True and Full Value	RURAL		ALL OTHER			MACHINERY Permanently Attached to Real Estate	TOTAL ASSESSED VALUE	Total Assessed Value as Equalized by the Board of Review
										Homestead Up to \$4,000	Over \$4,000 and Non-Homestead	Homestead Up to \$4,000	Over \$4,000 and Non-Homestead				
		NE 1/4 of NE 1/4			24 134.30												
		NW 1/4 of NE 1/4															
		SW 1/4 of NE 1/4															
		SE 1/4 of NE 1/4															
<i>Gull Lake Shores, Inc.</i>		NE 1/4 of NW 1/4 - Lot 1			25.30												
"	"	NW 1/4 of NW 1/4			40												
"	"	SW 1/4 of NW 1/4 - Lot 3			36.40												
"	"	SE 1/4 of NW 1/4 - Lot 2			20.20												
		NE 1/4 of SW 1/4															
<i>Gull Lake Shores, Inc.</i>		NW 1/4 of SW 1/4 - Lot 4			25.25												
"	"	SW 1/4 of SW 1/4 - Birch Forest			13.25												
<i>Wm E &amp; Emma Lippa</i>		SE 1/4 of SW 1/4															
		NE 1/4 of SE 1/4															
		NW 1/4 of SE 1/4															
		SW 1/4 of SE 1/4															
		SE 1/4 of SE 1/4															
					170.40												

Cass County, Minnesota, for Taxes for the Year 1953.

SOLD FOR TAXES	VALUATIONS BY SCHOOL DISTRICTS AS EQUALIZED BY DEPARTMENT OF TAXATION						Tax Including State Homestead	State Tax on Non-Homestead	SPECIAL TAXES	TOTAL TAXES	PAID	WHEN PAID	Number of Receipt	March Settlement 1954	June Settlement 1954	Penalty	November Settlement 1954	Penalty	Collection to First Monday in January 1955	Penalty	Delinquent on First Monday in January 1955	Total Delinquent Tax and Penalty	REMARKS
	District No.	District No.	District No.	District No.	District No.	District No.																	
	Rate	Rate	Rate	Rate	Rate	Rate																	
1																							
2																							
3																							
4																							
5																							
6						94	17.80	44	18.24	6	PAID IN FULL	SEP 7 1954									1824		
7						107	20.26	50	20.76	7	PAID IN FULL	SEP 7 1954									2076		
8						97	18.36	46	18.82	8	PAID IN FULL	SEP 7 1954									1882		
9						53	10.04	24	10.28	9	PAID IN FULL	SEP 7 1954									1028		
10																							
11																							
12						67	12.68	32	13.00	12	PAID IN FULL	SEP 7 1954									1300		
13						35	6.62	16	6.78	13	PAID IN FULL	SEP 7 1954									678		
14																							
15																							
16																							
17																							
18																							
19																							
20																							
						453	85.76	212	87.88												8788		



Assessment Roll and Tax List of Real Property in the Town of Fairview

Cass County, Minnesota, for Taxes for the Year 1953.

Table with columns: IN WHOSE NAME ASSESSED, TO WHOM TRANSFERRED, DESCRIPTION OF PROPERTY, TRUE AND FULL VALUATIONS, ASSESSED VALUATIONS, VALUATIONS BY SCHOOL DISTRICTS AS EQUALIZED BY DEPARTMENT OF TAXATION, SOLD FOR TAXES, SPECIAL TAXES, TOTAL TAXES, PAID, WHEN PAID, Number of Receipt, March Settlement 1954, June Settlement 1954, November Settlement 1954, Penalty, Collections to First Monday in January 1955, Delinquent on First Monday in January 1955, Total Delinquent Tax and Penalty, REMARKS.

134-30

Carlson's Sp. Van

Dr. Iron Forest



Assessment Roll and Tax List of Real Property in the *Town* of *Dairview*

Cass County, Minnesota, for Taxes for the Year 1953.

IN WHOSE NAME ASSESSED	TO WHOM TRANSFERRED	DESCRIPTION OF PROPERTY				TRUE AND FULL VALUATIONS			ASSESSED VALUATIONS					FINAL EQUALIZED VALUE	SOLD FOR TAXES	VALUATIONS BY SCHOOL DISTRICTS AS EQUALIZED BY DEPARTMENT OF TAXATION						SPECIAL TAXES	TOTAL TAXES	PAID	WHEN PAID	Number of Receipts	March Settlement 1954	June Settlement 1954	November Settlement 1954	Penalty	Collections to First Monday in January 1953	Penalty	Delinquent on First Monday in January 1953	Total Delinquent Tax and Penalty	REMARKS							
		SUBDIVISION	Sec. or Lot	Town or Block	Rng.	Number of Acres of Land	LAND Exclusive of Structures and Improvements	BUILDINGS and Other Structures	MACHINERY Permanently Attached to Real Estate	TOTAL True and Full Value	RURAL		ALL OTHER			MACHINERY Permanently Attached to Real Estate	TOTAL ASSESSED VALUE	Total Assessed Value as Equalized by the Board of Review	District No.	District No.	District No.															District No.	District No.	District No.	Tax including State Homestead	State Tax on Non-Homestead		
											Acres	100ths	Homestead Up to \$4,000 20%						Over \$4,000 and Non-Homestead 33 1/8%	Homestead Up to \$4,000 25%	Over \$4,000 and Non-Homestead 40%															Rate	Rate	Rate			Rate	Rate
State of Minnesota		NE 1/4 of NE 1/4																																								
State of Minnesota		NW 1/4 of NE 1/4																																								
State of Minnesota		SW 1/4 of NE 1/4																																								
State of Minnesota		SE 1/4 of NE 1/4																																								
State of Minnesota		NE 1/4 of NW 1/4																																								
State of Minnesota		NW 1/4 of NW 1/4																																								
State of Minnesota		SW 1/4 of NW 1/4																																								
State of Minnesota		SE 1/4 of NW 1/4																																								
State of Minnesota		NE 1/4 of SW 1/4																																								
State of Minnesota		NW 1/4 of SW 1/4																																								
State of Minnesota		SW 1/4 of SW 1/4																																								
State of Minnesota		SE 1/4 of SW 1/4																																								
State of Minnesota		NE 1/4 of SE 1/4																																								
State of Minnesota		NW 1/4 of SE 1/4																																								
State of Minnesota		SW 1/4 of SE 1/4																																								
State of Minnesota		SE 1/4 of SE 1/4																																								

134-50

Carlson's Sylvania

Sirch Forest











Assessment Roll and Tax List of Real Property in the Dawn of Fairview

Cass County, Minnesota, for Taxes for the Year 1953.

Form 507 (53) - MINN. STAT. ANN. § 260.03

IN WHOSE NAME ASSESSED	TO WHOM TRANSFERRED	DESCRIPTION OF PROPERTY	TRUE AND FULL VALUATIONS		ASSESSED VALUATIONS						TOTAL ASSESSED VALUE	FINAL EQUALIZED VALUE	SOLD FOR TAXES	VALUATIONS BY SCHOOL DISTRICTS AS EQUALIZED BY DEPARTMENT OF TAXATION						SPECIAL TAXES	TOTAL TAXES	PAID	WHEN PAID	Number of Receipt	March Settlement 1954	June Settlement 1954	Penalty Settlement 1954	November Penalty Settlement 1954	Collections to First Monday in January 1955	Delinquent on First Monday in January 1955	Total Delinquent Tax and Penalty	REMARKS					
			LAND Exclusive of Structures and Improvements	BUILDINGS and Other Structures	MACHINERY Permanently Attached to Real Estate	TOTAL True and Full Value	RURAL		ALL OTHER					MACHINERY Permanently Attached to Real Estate	TOTAL ASSESSED VALUE	District No.	District Rate	District No.	District Rate														District No.	District Rate			
							Homestead Up to \$4,000 20%	Over \$4,000 and Non-Homestead 33 1/3%	Homestead Up to \$4,000 25%	Over \$4,000 and Non-Homestead 40%																									Rate	Rate	
State of Minnesota		NE 1/4 of NE 1/4																																			
State of Minnesota		NW 1/4 of NE 1/4																																			
State of Minnesota		SW 1/4 of NE 1/4																																			
State of Minnesota		SE 1/4 of NE 1/4																																			
C. B. Sullivan		NE 1/4 of NW 1/4																																			
"		NW 1/4 of NW 1/4																																			
"		SW 1/4 of NW 1/4																																			
"		SE 1/4 of NW 1/4																																			
Claude Hines		border of Lot 2 & E. border of NW 1/4																																			
"		NE 1/4 of SW 1/4 less E. border																																			
"		Lot 1 lying W. of Sup road																																			
Carroll S. Patton		SW 1/4 of NW 1/4 of Sup Rd. & E. of E. 60'																																			
Claude Hines		SW 1/4 of NW 1/4 of Sup Rd. & E. of E. 60'																																			
Carroll S. Patton		SW 1/4 of NW 1/4 of Sup Rd. & E. of E. 60'																																			
Claude Hines		SE 1/4 of SW 1/4																																			
"		NW 1/4 of SE 1/4																																			
"		SW 1/4 of SE 1/4																																			
State of Minnesota		SE 1/4 of SE 1/4																																			
		(continued on next page)		396	70																																
						833										10766	374		16160																		

114-30

Carlson's System

Brush Forest

### Assessment Roll and Tax List of Real Property in the Down of Fairview

Form 307 (53)

IN WHOSE NAME ASSESSED	TO WHOM TRANSFERRED	DESCRIPTION OF PROPERTY	TRUE AND FULL VALUATIONS						ASSESSED VALUATIONS					FINAL EQUALIZED VALUE							
			LAND Exclusive of Structures and Improvements	BUILDINGS and Other Structures	MACHINERY Permanently Attached to Real Estate	TOTAL True and Full Value	RURAL		ALL OTHER		MACHINERY Permanently Attached to Real Estate	TOTAL ASSESSED VALUE	Total Assessed Value as Equalized by the Board of Review								
							Homestead Up to \$4,000 20%	Over \$4,000 and Non-Homestead 33 1/3%	Homestead Up to \$4,000 25%	Over \$4,000 and Non-Homestead 40%											
<i>W. R. &amp; Clara E. Mc Guire</i>		<i>That part of Lot 2 lying 20' of E. border of 1/2 Sec. 15 of NW 1/4 of Twp. 2 N., R. 20 W. 1/2 of Lot 2 lying 20' of E. border of 1/2 Sec. 15</i>																			
		SW 1/4 of NE 1/4																			
		SE 1/4 of NE 1/4																			
		NE 1/4 of NW 1/4																			
		NW 1/4 of NW 1/4																			
		SW 1/4 of NW 1/4																			
		SE 1/4 of NW 1/4																			
		NE 1/4 of SW 1/4																			
		NW 1/4 of SW 1/4																			
		SW 1/4 of SW 1/4																			
		SE 1/4 of SW 1/4																			
		NE 1/4 of SE 1/4																			
		NW 1/4 of SE 1/4																			
		SW 1/4 of SE 1/4																			
		SE 1/4 of SE 1/4																			

15 40

### Cass County, Minnesota, for Taxes for the Year 1953.

SOLD FOR TAXES	VALUATIONS BY SCHOOL DISTRICTS AS EQUALIZED BY DEPARTMENT OF TAXATION						Tax including State Homestead	State Tax on Non-Homestead	SPECIAL TAXES	TOTAL TAXES	PAID	WHEN PAID	Number of Receipts	March Settlement 1954	June Settlement 1954	Penalty	November Settlement 1954	Penalty	Collections to First Monday in January 1955	Penalty	Delinquent on First Monday in January 1955	Total Delinquent Tax and Penalty	REMARKS			
	District No.	District No.	District No.	District No.	District No.	District No.																		Rate	Rate	Rate
2						33	624	16	640																	
						33	624	16	640																	

60

1248

32

1280

640

640

Carlton's Station

Morton Forest



Form 501 (3-51)

IN WHOSE NAME ASSESSED	TO WHOM TRANSFERRED	DESCRIPTION OF PROPERTY				TRUE AND FULL VALUATIONS					ASSESSED VALUATIONS					FINAL EQUALIZED VALUE		
		SUBDIVISION	Sec. or Lot	Town or Block	Rng.	Number of Acres of Land	LAND Exclusive of Structures and Improvements	BUILDINGS and Other Structures	MACHINERY Permanently Attached to Real Estate	TOTAL True and Full Value	RURAL		ALL OTHER		MACHINERY Permanently Attached to Real Estate		TOTAL ASSESSED VALUE	Total Assessed Value as Equalized by the Board of Review
											Acres	100ths	Homestead Up to \$4,000 20%	Over \$4,000 and Non-Homestead 33 1/3%				
State of Minnesota		NE 1/4 of NE 1/4																
State of Minnesota		NW 1/4 of NE 1/4																
State of Minnesota		SW 1/4 of NE 1/4																
State of Minnesota		SE 1/4 of NE 1/4																
State of Minnesota		NE 1/4 of NW 1/4																
State of Minnesota		NW 1/4 of NW 1/4																
State of Minnesota		SW 1/4 of NW 1/4																
State of Minnesota		SE 1/4 of NW 1/4																
Lloyd & Margaret M. Jones		NE 1/4 of SW 1/4																
State of Minnesota		NW 1/4 of SW 1/4																
State of Minnesota		SW 1/4 of SW 1/4																
Lloyd & Margaret M. Jones		SE 1/4 of SW 1/4																
State of Minnesota		NE 1/4 of SE 1/4																
Lloyd & Margaret M. Jones		NW 1/4 of SE 1/4																
State of Minnesota		SW 1/4 of SE 1/4																
State of Minnesota		SE 1/4 of SE 1/4																

SOLD FOR TAXES	VALUATIONS BY SCHOOL DISTRICTS AS EQUALIZED BY DEPARTMENT OF TAXATION						Tax Including State Homestead	State Tax on Non-Homestead	SPECIAL TAXES	TOTAL TAXES	PAID	WHEN PAID	Number of Receipts	March Settlement 1954	June Settlement 1954	November Settlement 1954	Penalty	Collect to First Monday in January 1955	Penalty	Delinquent on First Monday in January 1955	Total Delinquent Tax and Penalty	REMARKS
	District No.	District No.	District No.	District No.	District No.	District No.																
	Rate	Rate	Rate	Rate	Rate	Rate																
1																						
2																						
3																						
4																						
5																						
6																						
7																						
8																						
9																						
10																						
11									78 126	23 86	23 86	11 PAID IN FULL APR 20 1954 5479								23 86		
12																						
13																						
14									78 6 1/2	21 54	21 54	14 PAID IN FULL APR 20 1954 5479								21 54		
15																						
16																						
17									78 48	9 08	9 08	17 PAID IN FULL APR 20 1954 5479								9 08		
18																						
19																						
20									78 23 5	44 48	44 48									44 48		

134-99

Cass County, Minnesota

March Forest





Assessment Roll and Tax List of Real Property in the \_\_\_\_\_ of \_\_\_\_\_

IN WHOSE NAME ASSESSED	TO WHOM TRANSFERRED	DESCRIPTION OF PROPERTY					TRUE AND FULL VALUATIONS												ASSESSED VA				
		SUBDIVISION	Sec. of Lot	Town or Block	Rtg.	Number of Acres of Land Acres 100ths	LAND Excl. of Structures and Improvements Dollars	BUILDINGS and Other Structures Dollars	MACHINERY Permanently Attached to Real Estate Dollars	TOTAL True and Full Value Dollars	RURAL			ALL OTHER			TOTAL Dollars	Homestead Dollars	Penalty Dollars	Total Dollars	REMARKS		
											Homestead Up to \$4,000 20%	Over \$4,000 and Non-Homestead 33 1/4%	Homestead Up to \$4,000 25%	Over \$4,000 and Non-Homestead 40%									
		1a																					

PAGES

44

THRU

50

BLANK

Cass County, Minnesota, for Taxes for the Year 1953.

Ad dres s	State Tax on Non-Homestead	SPECIAL TAXES	TOTAL TAXES	PAID	WHEN PAID	Number of Receipt	March	June	Penalty	November	Collections to First Monday in January 1953	Penalty	Delinquent on First Monday in January 1953	Total Delinquent Tax and Penalty	REMARKS
							Settlement 1953	Settlement 1953		Settlement 1953			Penalty		

Carlson's System

Stitch Forest



Assessment Roll and Tax List of Real Property in the Town of Fairview

Cass County, Minnesota, for Taxes for the Year 1953.

IN WHOSE NAME ASSESSED	TO WHOM TRANSFERRED	DESCRIPTION OF PROPERTY				TRUE AND FULL VALUATIONS		ASSESSED VALUATIONS					FINAL EQUALIZED VALUE						
		SUBDIVISION	Sec. or Lot	Town or Block	Ang.	Number of Acres of Land	LAND Exclusive of Structures and Improvements	BUILDINGS and Other Structures	MACHINERY Permanently Attached to Real Estate	TOTAL True and Full Value	RURAL Homestead Up to \$4,000 20%	Over \$4,000 and Non-Homestead 33 1/3%		ALL OTHER Homestead Up to \$4,000 25%	Over \$4,000 and Non-Homestead 40%	MACHINERY Permanently Attached to Real Estate 33 1/3%	TOTAL ASSESSED VALUE	Total Assessed Value as Equalized by the Board of Review	
Jean Hobbins	Jean Hobbins	Manatauck (Lot 1 Sec 4 & Lot 1 Sec 5-134-29)	1	1															
Chadwick Hobbins	Jean Hobbins		2																
"	"		3																
John P. Kriss	"		4																
"	"		5																
"	"		6																
"	"		7																
"	"		8																
"	"		9																
"	"		10																
"	"		11																
"	"		12																
"	"		13																
"	"		14																
"	"		15																
"	"		16																
"	"		17																
"	"		18																
"	"		19																
"	"		20																

SOLD FOR TAXES	VALUATIONS BY SCHOOL DISTRICTS AS EQUALIZED BY DEPARTMENT OF TAXATION						Tax Including State Homestead	State Tax on Non-Homestead	SPECIAL TAXES	TOTAL TAXES	PAID	WHEN PAID	Number of Receipt	March Settlement 1954	June Settlement 1954	November Settlement 1954	Penalty	Collections to First Monday in January 1955	Penalty	Delinquent on First Monday in January 1955	Total Delinquent Tax and Penalty	REMARKS
	District No.	District Rate	District No.	District Rate	District No.	District Rate																
	\$	cts.	\$	cts.	\$	cts.																
	273					60.42	128		61.70	1	PAID IN FULL	FEB 9 1954										
	16					3.54	08		3.62	2	PAID IN FULL	FEB 9 1954										
	6					2.32	02		1.34	3	PAID IN FULL	FEB 9 1954										
	6					1.32	02		1.34	4	PAID IN FULL	MAR 2 1954										
	6					1.32	02		1.34	5	PAID IN FULL	MAR 2 1954										
	6					1.32	02		1.34	6	PAID IN FULL	MAR 2 1954										
	6					1.32	02		1.34	7	PAID IN FULL	MAR 2 1954										
	6					1.32	02		1.34	8	PAID IN FULL	MAR 2 1954										
	6					1.32	02		1.34	9	PAID IN FULL	MAR 2 1954										
	6					1.32	02		1.34	10	PAID IN FULL	MAR 2 1954										
	6					1.32	02		1.34	11	PAID IN FULL	MAR 2 1954										
	6					1.32	02		1.34	12	PAID IN FULL	MAR 2 1954										
	6					1.32	02		1.34	13	PAID IN FULL	MAR 2 1954										
	6					1.32	02		1.34	14	PAID IN FULL	MAR 2 1954										
	6					1.32	02		1.34	15	PAID IN FULL	MAR 2 1954										
	6					1.32	02		1.34	16	PAID IN FULL	MAR 2 1954										
	6					1.32	02		1.34	17	PAID IN FULL	MAR 2 1954										
	6					1.32	02		1.34	18	PAID IN FULL	MAR 2 1954										

Carolyn's Sylvan Park

Heron Forest



Assessment Roll and Tax List of Real Property in the *Down* of *Fairview*

Cass County, Minnesota, for Taxes for the Year 1953.

Form 50 (53)

144-89  
144-90

Carolyon's Sylvan Park  
Birch Forest

IN WHOSE NAME ASSESSED	TO WHOM TRANSFERRED	DESCRIPTION OF PROPERTY			TRUE AND FULL VALUATIONS			ASSESSED VALUATIONS					FINAL EQUALIZED VALUE	VALUATIONS BY SCHOOL DISTRICTS AS EQUALIZED BY DEPARTMENT OF TAXATION										SPECIAL TAXES	TOTAL TAXES	PAID	WHEN PAID	Number of Receipt	March Settlement 1954	June Settlement 1954	Penalty	November Settlement 1954	Penalty	Collections to First Monday in January 1955	Penalty	Delinquent on First Monday in January 1955	Total Delinquent Tax and Penalty	REMARKS	
		Subdivision	Sec. or Lot	Town or Block	Rng.	Number of Acres of Land	LAND Exclusive of Structures and Improvements	BUILDINGS and Other Structures	MACHINERY Permanently Attached to Real Estate	TOTAL True and Full Value	RURAL			ALL OTHER		MACHINERY Permanently Attached to Real Estate	TOTAL ASSESSED VALUE	Total Assessed Value as Equalized by the Board of Review	District		Tax including State Homestead	State Tax on Non-Homestead																	
											Homestead	Over \$4,000 and Non-Homestead		Homestead	Over \$4,000 and Non-Homestead				District No.	District No.			Rate																Rate
		Dollars	Dollars	Dollars	Dollars	Dollars	Dollars	Dollars	Dollars	Dollars	Dollars	Dollars		Dollars	Dollars	Dollars	Dollars	Dollars	Dollars	Dollars	Dollars	Dollars	Dollars																Dollars
<i>Gull Lake Shares Inc.</i>		<i>Birch Forest</i>															8	152	04		156	1	PAID IN FULL	SEP 7	1954														
"		"															8	152	04		156	2	PAID IN FULL	SEP 7	1954														
"		"															8	152	04		156	3	PAID IN FULL	SEP 7	1954														
"		"															8	152	04		156	4	PAID IN FULL	SEP 7	1954														
"		"															8	152	04		156	5	PAID IN FULL	SEP 7	1954														
"		"															8	152	04		156	6	PAID IN FULL	SEP 7	1954														
"		"															8	152	04		156	7	PAID IN FULL	SEP 7	1954	1320							-2028						
"		"															8	152	04		156	8	PAID IN FULL	SEP 7	1954														
"		"															8	152	04		156	9	PAID IN FULL	SEP 7	1954														
"		"															8	152	04		156	10	PAID IN FULL	SEP 7	1954														
"		"															8	152	04		156	11	PAID IN FULL	SEP 7	1954														
"		"															8	152	04		156	12	PAID IN FULL	SEP 7	1954														
"		"															8	152	04		156	13	PAID IN FULL	SEP 7	1954														
<i>Mrs C. &amp; Emma Leppa</i>																	8	152	04		156	14	PAID IN FULL	SEP 7	1954														
<i>Oscar &amp; Irene N. Leppa</i>																	8	152	04		156	15	PAID IN FULL	FEB 27	1954	1229													
<i>Richard E. &amp; Barbara L. Anderson</i>																	8	152	04		156	16	PAID IN FULL	MAY 25	1954	1243													
"																	8	152	04		156	17															1560 192		
<i>Gull Lake Shares Inc.</i>																	8	152	04		156	18	PAID IN FULL	SEP 7	1954	1320												1560 172	
<i>Lev. A. &amp; Helen J. Melius</i>																	8	152	04		156	19															1560 172		
<i>Gull Lake Shares Inc.</i>																	8	152	04		156	20	PAID IN FULL	SEP 7	1954	1320													
																	100	3040	80		3120						156		156			2340						468	



Assessment Roll and Tax List of Real Property in the *Town of Fairview*

Form 53 (53) MULTIPLE ENTRY, COMPACT

DESCRIPTION OF PROPERTY

TRUE AND FULL VALUATIONS

ASSESSED VALUATIONS

IN WHOSE NAME ASSESSED

TO WHOM TRANSFERRED

SUBDIVISION

Sec. or Lot

Town or Block

Rng.

Number of Acres of Land

Acres 100ths

Indicate Homestead Tax or No

Indicate Agricultural Tax or No

LAND Exclusive of Structures and Improvements

BUILDINGS and Other Structures

MACHINERY Permanently Attached to Real Estate

TOTAL True and Full Value

RURAL Homestead Up to \$4,000 20%

Over \$4,000 and Non-Homestead 33 1/3%

ALL OTHER Homestead Up to \$4,000 25%

Over \$4,000 and Non-Homestead 40%

MACHINERY Permanently Attached to Real Estate 33 1/3%

TOTAL ASSESSED VALUE

Total Assessed Value as Equalized by the Board of Review

FINAL EQUALIZED VALUE

Dollars

Dollars

Dollars

Dollars

Dollars

Dollars

Dollars

Dollars

Dollars

Dollars

Dollars

Dollars

Dollars

Dollars

VALUATIONS BY SCHOOL DISTRICTS AS EQUALIZED BY DEPARTMENT OF TAXATION

SOLD FOR TAXES

District No.

District No.

District No.

District No.

District No.

District No.

Tax Rate Including State Homestead

State Tax on Non-Homestead

SPECIAL TAXES

TOTAL TAXES

PAID

WHEN PAID

Number of Receipts

March Settlement 1954

June Settlement 1954

Penalty

November Settlement 1954

Penalty

Collections to First Monday in January 1955

Penalty

Delinquent on First Monday in January 1955

Total Delinquent Tax and Penalty

REMARKS

Dollars

Dollars

Dollars

Dollars

Dollars

Dollars

Dollars

Dollars

Dollars

Dollars

Dollars

Dollars

Dollars

Dollars

Dollars

Dollars

Dollars

Dollars

Dollars

Dollars

Dollars

Dollars

Dollars

Dollars

Dollars

Dollars

Dollars

Dollars

Dollars

Dollars

Dollars

Dollars

Dollars

Dollars

REMARKS

Cass County, Minnesota, for Taxes for the Year 1953.

134-29

Carlyon's Sylvan Park

Birch Forest

*Hull Lake Shores Inc.*  
1  
2  
3  
4  
5  
*Autok*  
6  
7  
8

*Birch Forest*  
21  
22  
23  
24  
25  
A  
B  
C

1 8 152 04 156 1 PAID IN FULL SEP 7 1954  
2 8 152 04 156 2 PAID IN FULL SEP 7 1954  
3 8 252 04 156 3 PAID IN FULL SEP 7 1954  
4 8 152 04 156 4 PAID IN FULL SEP 7 1954  
5 8 152 04 156 5 PAID IN FULL SEP 7 1954  
6 8 152 04 156 6 PAID IN FULL SEP 7 1954  
7 8 152 04 156 7 PAID IN FULL SEP 7 1954  
8 8 152 04 156 8 PAID IN FULL SEP 7 1954

64 127 32 1248 1248

Assessment Roll and Tax List of Real Property in the *County* of *Hennepin*

Form 5C (53) (Revised 1952)

134-29  
134-30  
Carolyn's Sylvan Park  
Birch Forest

IN WHOSE NAME ASSESSED	TO WHOM TRANSFERRED	DESCRIPTION OF PROPERTY				No. School District	Indicate Homestead Yes or No	Indicate Agricultural Yes or No	TRUE AND FULL VALUATIONS					ASSESSED VALUATIONS					FINAL EQUALIZED VALUE	
		SUBDIVISION	Sec. or Lot	Town or Block	Number of Acres of Land Acres 100ths				LAND Exclusive of Structures and Improvements	BUILDINGS and Other Structures	MACHINERY Permanently Attached to Real Estate	TOTAL True and Full Value	RURAL		ALL OTHER		MACHINERY Permanently Attached to Real Estate	TOTAL ASSESSED VALUE		Total Assessed Value as Equalized by the Board of Review
													Homestead Up to \$4,000	Over \$4,000 and Non-Homestead 33 1/3%	Homestead Up to \$4,000	Over \$4,000 and Non-Homestead 40%				
		Dollars	Dollars	Dollars	Dollars	Dollars	Dollars	Dollars	Dollars	Dollars	Dollars	Dollars	Dollars	Dollars	Dollars					

1  
2  
3  
4  
5  
6  
7  
8  
9  
10  
11  
12  
13  
14  
15  
16  
17  
18  
19  
20

*Grand Totals* *11,657.80*

Cass County, Minnesota, for Taxes for the Year 1953.

SOLD FOR TAXES	VALUATIONS BY SCHOOL DISTRICTS AS EQUALIZED BY DEPARTMENT OF TAXATION						Tax Including State Homestead	State Tax on Non-Homestead	SPECIAL TAXES	TOTAL TAXES	PAID	WHEN PAID	Number of Receipts	March Settlement 1954	June Settlement 1954	Penalty	November Settlement 1954	Penalty	Collections to First Monday in January 1955	Penalty	Delinquent on First Monday in January 1953	Total Delinquent Tax and Penalty	REMARKS
	District No.	District No.	District No.	District No.	District No.	District No.																	
	Rate	Rate	Rate	Rate	Rate	Rate																	
	Mills	Mills	Mills	Mills	Mills	Mills																	
	Dollars	Dollars	Dollars	Dollars	Dollars	Dollars	\$ cts.	\$ cts.	\$ cts.	\$ cts.		Month Day Year	\$ cts.	\$ cts.	\$ cts.	\$ cts.	\$ cts.	\$ cts.	\$ cts.	\$ cts.	\$ cts.	\$ cts.	\$ cts.

*H 417* *H 7230 = 7647*  
*3793* *25093 = 28866*  
*4190* *32323 = 36513*  
*A.Y. 22-50927.12*  
*A.Y. 29-122618.12*  
*704524.13500* *718024*

1  
2  
3  
4  
5  
6  
7  
8  
9  
10  
11  
12  
13  
14  
15  
16  
17  
18  
19  
20