

Deerfield

ASSESSMENT & TAX LIST

1946

Treasurer's Office, Cass County, Minnesota

RECEIVED this, the first Monday (being the 6th day) of January, A. D. 1947, of D. C. Peterson, Auditor of said County, Minnesota, the Tax List of all Taxable Real and Personal Property in the town of Deerfield in said County for the year A. D. 1946, as specified above and amounting to _____ Dollars

Paul D. Jewell
County Treasurer.

Office of County Treasurer, Cass County, Minnesota

To _____, County Auditor:

Sir:—I herewith return to you the Tax List for the _____ of _____ in said County for the year 1946, heretofore received from you. I certify that I have compared the same with the duplicate receipts in your office, and have written opposite the amount of each tax so receipted the words "First Quarter Paid", "Second Quarter Paid", "Third Quarter Paid" or "Paid in full" as the case may be, and the number of my receipt given in discharge of said tax, and each tract or lot of real property against which the taxes remain unpaid is delinquent for said year.

Yours respectfully,

County Treasurer.

Auditor's Office, Cass County, Minnesota

I, _____ Auditor of said County, and State of Minnesota, do hereby certify that the following is a correct list of the Taxes levied on the Real and Personal Property in the _____ of _____ for the year 1946.

WITNESS my hand and official seal, the _____ day of _____ 1947.

(SEAL) _____
County Auditor.

Auditor's Office, Cass County, Minnesota

I hereby certify that on the first Monday in January 1948, I received of _____ County Treasurer, the Tax List of the _____ of _____ in said County for the year 1946; that I have compared the said list with the Statements receipted for by said Treasurer, which are on file in my office, and that each tract or lot of real property therein against which the taxes, or any part thereof, remains unpaid are delinquent for said year.

(SEAL) _____
County Auditor.

Printed Real

COLLECTIONS OF TAXES OF 1947

Town

OF Deerfield

CASS COUNTY, MINNESOTA

FUNDS	MARCH SETTLEMENT 1947	JUNE SETTLEMENT 1947	NOV. SETTLEMENT 19.....	Amount Collected from Nov. 19..... to First Monday in Jan. 19.....	REDUCTIONS	Total Reductions and Collected	BALANCE UNCOLLECTED	ADDITIONS	Total Uncollected to First Monday in January, 19.....
State Revenue,									
State School,									
Teachers Insurance,									
State Debt—Non-Homestead,	1502	1031							
State Debt—Homestead,	378	402							
County Revenue,	5473	5819							
County Road and Bridge,	2424	2577							
County Welfare,	10372	11029							
County Bond and Interest,	4456	4739							
Town Revenue,	1303	1386							
Town Road and Bridge,	3909	4157							
Town Drag,	261	277							
Town State Loan,									
Fire	1303	1386							
School Local 1 Mill,	261	277							
School Special,	5512	4419							
School State Loan,									
Deficiency	3909	4156							
C.O.	1303	1385							
B.+J.	7479	7953							
Total	49845	50993							

	SCHOOL DISTRICT NO.	LOCAL 1 MILL	SPECIAL	STATE LOAN	Deficiency	C.O.	B.+J.	TOTALS
MARCH SETTLEMENT	School District No. Un. A.	154	2302		2304	768	4408	9936
	" " " Un. B.	107	3210		1605	535	3071	8528
	Totals	261	5512		3909	1303	7479	18464
JUNE SETTLEMENT	School District No. Un. A.	260	3894		3894	1298	7451	16797
	" " " Un. B.	17	525		262	87	502	1393
	Totals	277	4419		4156	1385	7953	18190
NOVEMBER SETTLEMENT	School District No.							
	Totals							
NOVEMBER to JANUARY	School District No.							
	Totals							
ADDITIONS	School District No.							
	Totals							
REDUCTIONS	School District No.							
	Totals							

Assessment Roll and Tax List of Real Property in the Town of Deerfield

Table with columns: IN WHOSE NAME ASSESSED, TO WHOM TRANSFERRED, DESCRIPTION OF PROPERTY, TRUE AND FULL VALUATIONS, ASSESSED VALUATIONS, FINAL EQUALIZED VALUE. Includes entries for Daniel Dedury, State of Minnesota, and various land parcels.

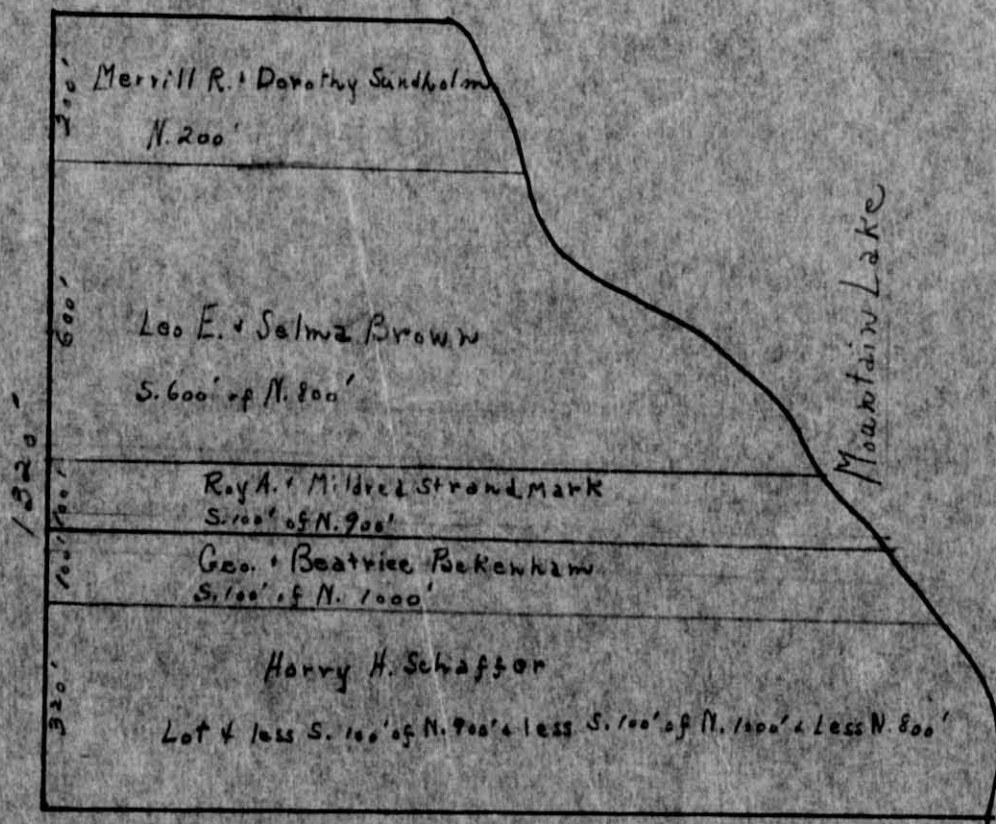
Cass County, Minnesota, for Taxes for the Year 1946.

Table with columns: VALUATIONS BY SCHOOL DISTRICTS AS EQUALIZED BY DEPARTMENT OF TAXATION, Rate and Tax Less Homestead Exemption, State Tax on Non-Homestead, TOTAL GENERAL TAX, SPECIAL TAXES, TOTAL TAXES, PAID, WHEN PAID, Number of Receipt, March Settlement 1947, June Settlement 1947, November Settlement 1947, Collections to First Monday in January 1948, Delinquent on First Monday in January 1948, Total Delinquent Tax and Penalty, REMARKS. Includes entries for parcels 1 through 20.

Greenfield

Gov't. Lot 4, 139-31
Section 25

N.
↑
|
↓
S.



Assessment Roll and Tax List of Real Property in the Town of Deerfield

Form 4 CD - WILCOX-BAYNE COMPANY, MINNEAPOLIS

Table with columns: IN WHOSE NAME ASSESSED, TO WHOM TRANSFERRED, DESCRIPTION OF PROPERTY, TRUE AND FULL VALUATIONS, ASSESSED VALUATIONS, FINAL EQUALIZED VALUE. Includes entries for Roy Holden, Isabelle Hansen, Harry + Thos. Holden, etc.

Cass County, Minnesota, for Taxes for the Year 1946.

Table with columns: SOLD FOR TAXES, VALUATIONS BY SCHOOL DISTRICTS AS EQUALIZED BY DEPARTMENT OF TAXATION, Rate and Tax Less Homestead Exemption, State Tax on Non-Homestead, TOTAL GENERAL TAX, SPECIAL TAXES, PAID, WHEN PAID, Number of Receipt, March Settlement 1947, June Settlement 1947, November Settlement 1947, Collections to First Monday in January 1948, Delinquent on First Monday in January 1948, Total Delinquent Tax and Penalty, REMARKS. Includes entries for properties 1 through 20.

Tabular Statement of Taxable Real Property Assessment of the Town of Deerfield, County of Cass, Minnesota, 19

FORM 6 - MILLER & DATE COMPANY, MINNEAPOLIS

Number of Acres of Land Assessed	TRUE AND FULL VALUATIONS				ASSESSED VALUATIONS					EQUALIZED ASSESSED VALUATIONS				
	Acres	LAND Exclusive of Structures and Improvements Dollars	BUILDINGS and Other Structures Dollars	MACHINERY Permanently Attached to Real Estate Dollars	TOTAL True and Full Value Dollars	RURAL		ALL OTHER		MACHINERY Permanently Attached to Real Estate 33 1/4% Dollars	TOTAL ASSESSED VALUE Dollars	Board of Review Dollars	County Board Dollars	Commissioner of Taxation Dollars
						Homestead Up to \$4,000 20% Dollars	Over \$4,000 and Non-Homestead 33 1/4% Dollars	Homestead Up to \$4,000 25% Dollars	Over \$4,000 and Non-Homestead 40% Dollars					
Footings from Page														
" " "	19	918	150		1068	120	156						276	
" " "	20	1506	350		1856	229	237						466	
" " "	21	Blank												
" " "	22	234			234		78						78	
" " "	23	Blank												
" " "	24	724	580		1304	70	318						388	
" " "	25	603	213		816		272						272	
" " "	26	Blank												
" " "	27	Blank												
" " "	28	Blank												
" " "	29	705	200		905	145	60						205	
" " "	30	2328	460		2788	410	246						656	
" " "	31	2162	1074		3236	478	282						760	
" " "	32	1633	122		1755	198	255						453	
" " "	33	Blank												
" " "	34	468			468		156						156	
" " "	35	Blank												
" " "	36	351	150		501	48	87						135	
		23319	5206		28525	3008	4495						7503	OK cc