

SUMMARY OF TAX COLLECTION

Original Levy	-	-	-	-	-	\$ 2,730.92
Additions	-	-	-	-	-	\$ 1.00
Abatements	-	-	-	-	-	\$ 2,731.92
						\$ 2,731.92

COLLECTIONS

March Settlement	-	-	-	-	-	\$ 604.85
June Settlement	-	-	-	-	-	\$ 1,010.18
November Settlement	-	-	-	-	-	\$ 615.55
January Settlement	-	-	-	-	-	\$ 2,230.58
Over Collected	-	-	-	-	-	\$
Under Collected	-	-	-	-	-	\$
Delinquent	-	-	-	-	-	\$ 501.24
Total	-	-	-	-	-	\$ 2,731.82

COLLECTIONS OF TAXES OF 1958

Town OF Deerfield, CASS COUNTY, MINNESOTA

FUNDS	MARCH SETTLEMENT 1958	JUNE SETTLEMENT 1958	NOV. SETTLEMENT 1958	Amount Collected from Nov. 1957 to First Monday in Jan. 1958	REDUCTIONS	Total Reductions and Collected	BALANCE UNCOLLECTED	ADDITIONS	Total Uncollected to First Monday in January, 1958
State-Non-Homestead	1223	1758	870						
State-Homestead	1307	2187	1348						
County Revenue	6542	10952	6696						
County Road and Bridge	3322	5361	3426						
County Welfare	11445	19160	11754						
County Bond and Interest									
R. & B. Fed. Proj.	1107	1854	1142						
Co. Nurse	443	742	457						
R. & B. Bldg.	443	742	457						
Town Revenue	2214	3708	2284						
Town Road and Bridge	5536	9269	5710						
Town Drag	222	370	228						
Town State Loan									
Fire	2215	3708	2284						
Phone	2215	3708	2284						
School Local 1 Mill	221	371	228						
School Special	6937	11658	6818						
School State Loan									
Deficiency	8858	14830	9136						
Tuition									
Transportation	322	538	331						
C.O.	4540	7600	4684						
PERA	500	838	516						
PERA Agri. Assn.	761 112	1279 185	788 114						
	60485	101018	61355						

	School District No.	LOCAL 1 MILL	SPECIAL	STATE LOAN	Deficiency	C.O.	Transp	PERA	TOTALS
MARCH SETTLEMENT	114 71a	56	2800		2240	1148	82	126	6452
	114 a	165	137		6618	3392	240	374	14926
	Totals	221	6937		8858	4540	322	500	21378
JUNE SETTLEMENT	114 a	275	6877		11007	5641	399	622	24823
	114 71a	96	4779		3823	1959	137	216	11012
	Totals	371	11658		14830	7600	538	838	35835
NOVEMBER SETTLEMENT	114-B	184	4600		7361	3773	267	416	16601
	114-71a	44	2218		1775	911	64	100	5112
	Totals	228	6818		9136	4684	331	516	21713
NOVEMBER to JANUARY									
ADDITIONS									
REDUCTIONS									

Real Estate

Assessment Roll and Tax List of Real Property in the Town of Deerfield

Cass County, Minnesota, for Taxes for the Year 1958.

Form 300 (1957) * Indicate Type of Property: R-Residential, C-Commercial, I-Industrial, U-Utility, F-Farm, L-Lakeshore, T-Timber, M-Mineral

Table with columns for IN WHOSE NAME ASSESSED, TO WHOM TRANSFERRED, DESCRIPTION OF PROPERTY, TRUE AND FULL VALUATIONS, ASSESSED VALUATIONS, VALUATIONS BY SCHOOL DISTRICTS AS EQUALIZED BY DEPARTMENT OF TAXATION, TAXES, PAID, WHEN PAID, Number of Receipt, March Settlement 1959, June Settlement 1959, Penalty, November Settlement 1959, Penalty, Collections to First Monday in January 1960, Penalty, Delinquent on First Monday in January 1960, Total Delinquent Tax and Penalty, REMARKS.

Assessment Roll and Tax List of Real Property in the Town of Deepfield

Cass County, Minnesota, for Taxes for the Year 1958.

Table with columns: IN WHOSE NAME ASSESSED, TO WHOM TRANSFERRED, DESCRIPTION OF PROPERTY, TRUE AND FULL VALUATIONS, ASSESSED VALUATIONS, VALUATIONS BY SCHOOL DISTRICTS AS EQUALIZED BY DEPARTMENT OF TAXATION, TAXES, PAID, WHEN PAID, Number of Receipt, March Settlement 1959, June Settlement 1959, Penalty, November Settlement 1959, Penalty, Collections to First Monday in January 1960, Penalty, Delinquent on First Monday in January 1960, Total Delinquent Tax and Penalty, REMARKS.

Assessment Roll and Tax List of Real Property in the Town of Deerfield

Cass County, Minnesota, for Taxes for the Year 1958.

Indicate Type of Property: R-Residential, C-Commercial, I-Industrial, U-Utility, F-Farm, L-Lakeshore, T-Timber, M-Mineral

Table with columns: IN WHOSE NAME ASSESSED, TO WHOM TRANSFERRED, DESCRIPTION OF PROPERTY, TRUE AND FULL VALUATIONS, ASSESSED VALUATIONS, VALUATIONS BY SCHOOL DISTRICTS AS EQUALIZED BY DEPARTMENT OF TAXATION, TAXES, PAID, WHEN PAID, Number of Receipt, March Settlement 1959, June Settlement 1959, Penalty, November Settlement 1959, Penalty, Collections to First Monday in January 1960, Penalty, Delinquent on First Monday in January 1960, Total Delinquent Tax and Penalty, REMARKS.

Assessment Roll and Tax List of Real Property in the Town of Deerfield

Indicate Type of Property: R-Residential, C-Commercial, I-Industrial, U-Utility, F-Farm, L-Lakeshore, T-Timber, M-Mineral

Cass County, Minnesota, for Taxes for the Year 1958.

Table with columns: IN WHOSE NAME ASSESSED, TO WHOM TRANSFERRED, SUBDIVISION, TRUE AND FULL VALUATIONS (RURAL, ALL OTHER), VALUATIONS BY SCHOOL DISTRICTS AS EQUALIZED BY DEPARTMENT OF TAXATION, SOLD FOR TAXES, SPECIAL TAXES, TOTAL TAXES, PAID, WHEN PAID, Number of Receipt, March Settlement, June Settlement, November Settlement, Collections to First Monday in January 1960, Delinquent on First Monday in January 1960, Total Delinquent Tax and Penalty, REMARKS.

Assessment Roll and Tax List of Real Property in the Town of Deerfield

Indicate Type of Property: R-Residential, C-Commercial, I-Industrial, U-Utility, F-Farm, L-Lakeshore, T-Timber, M-Mineral

Cass County, Minnesota, for Taxes for the Year 1958.

Table with columns for 'IN WHOSE NAME ASSESSED', 'TO WHOM TRANSFERRED', 'DESCRIPTION OF PROPERTY', 'TRUE AND FULL VALUATIONS', 'ASSESSED VALUATIONS', 'VALUATIONS BY SCHOOL DISTRICTS AS EQUALIZED BY DEPARTMENT OF TAXATION', 'SOLD FOR TAXES', 'PAID', 'WHEN PAID', 'Number of Receipt', 'March Settlement 1959', 'June Settlement 1959', 'November Settlement 1959', 'Penalty', 'Collections to First Monday in January 1960', 'Delinquent on First Monday in January 1960', 'Total Delinquent Tax and Penalty', and 'REMARKS'.

Assessment Roll and Tax List of Real Property in the Town of Deerfield

Form 500

Indicate Type of Property: R-Residential, C-Commercial, I-Industrial, U-Utility, F-Farm, L-Lakeshore, T-Timber, M-Mineral

Table with columns: IN WHOSE NAME ASSESSED, TO WHOM TRANSFERRED, SUBDIVISION, TRUE AND FULL VALUATIONS, ASSESSED VALUATIONS, and FINAL EQUALIZED VALUE. Includes rows for various subdivisions like NE 1/4 of NW 1/4.

Cass County, Minnesota, for Taxes for the Year 1958.

Table with columns: VALUATIONS BY SCHOOL DISTRICTS AS EQUALIZED BY DEPARTMENT OF TAXATION, TAXES, PAID, WHEN PAID, and various settlement/penalty columns. Includes rows numbered 1 through 20.

Assessment Roll and Tax List of Real Property in the Town of Deerfield

Indicate Type of Property: R-Residential, C-Commercial, I-Industrial, U-Utility, F-Farm, L-Lakeshore, T-Timber, M-Mineral

Cass County, Minnesota, for Taxes for the Year 1958.

Table with columns for 'IN WHOSE NAME ASSESSED', 'TO WHOM TRANSFERRED', 'DESCRIPTION OF PROPERTY', 'TRUE AND FULL VALUATIONS', 'ASSESSED VALUATIONS', 'VALUATIONS BY SCHOOL DISTRICTS AS EQUALIZED BY DEPARTMENT OF TALLATION', 'SOLD FOR TAXES', 'PAID', 'WHEN PAID', 'Number of Receipt', 'March Settlement 1959', 'June Settlement 1959', 'November Settlement 1959', 'Penalty', 'Collections to First Monday in January 1960', 'Delinquent on First Monday in January 1960', 'Total Delinquent Tax and Penalty', and 'REMARKS'.

Assessment Roll and Tax List of Real Property in the Town of Deerfield

Cass County, Minnesota, for Taxes for the Year 1958.

Indicate Type of Property: R-Residential, C-Commercial, I-Industrial, U-Utility, F-Farm, L-Lakeshore, T-Timber, M-Mineral

Table with columns: WHOSE NAME ASSESSED, TO WHOM TRANSFERRED, DESCRIPTION OF PROPERTY, TRUE AND FULL VALUATIONS, ASSESSED VALUATIONS, VALUATIONS BY SCHOOL DISTRICTS AS EQUALIZED BY DEPARTMENT OF TAXATION, TAXES, PAID, WHEN PAID, and REMARKS.

Assessment Roll and Tax List of Real Property in the Town of Clearfield

Cass County, Minnesota, for Taxes for the Year 1958.

Indicate Type of Property: R-Residential, C-Commercial, I-Industrial, U-Utility, F-Farm, L-Lakeshore, T-Timber, M-Mineral

Table with columns: IN WHOSE NAME ASSESSED, TO WHOM TRANSFERRED, DESCRIPTION OF PROPERTY, TRUE AND FULL VALUATIONS, ASSESSED VALUATIONS, VALUATIONS BY SCHOOL DISTRICTS AS EQUALIZED BY DEPARTMENT OF TAXATION, SOLD FOR TAXES, PAID, WHEN PAID, Number of Receipt, March Settlement 1959, June Settlement 1959, November Settlement 1959, Collections to First Monday in January 1960, Delinquent on First Monday in January 1960, Total Delinquent Tax and Penalty, REMARKS.

State of Minnesota 1 N E 1/4 of N E 1/4 16 139 31 #114
State of Minnesota 2 N W 1/4 of N E 1/4
State of Minnesota 3 S W 1/4 of N E 1/4
State of Minnesota 4 S E 1/4 of N E 1/4
State of Minnesota 5
State of Minnesota 6 N E 1/4 of N W 1/4 Lot 1
7 N W 1/4 of N W 1/4
Wm. J. & Angelina Ambroski 8 S W 1/4 of N W 1/4 Lot 2 22 60 110 7/16 T 21 21 7 7
State of Minnesota 9 S E 1/4 of N W 1/4
State of Minnesota 10
State of Minnesota 11 N E 1/4 of S W 1/4
State of Minnesota 12 N W 1/4 of S W 1/4
State of Minnesota 13 S W 1/4 of S W 1/4
State of Minnesota 14 S E 1/4 of S W 1/4
State of Minnesota 15
State of Minnesota 16 N E 1/4 of S E 1/4
State of Minnesota 17 N W 1/4 of S E 1/4
State of Minnesota 18 S W 1/4 of S E 1/4
State of Minnesota 19 S E 1/4 of S E 1/4
20

182 04 186
2nd Half Paid NOV 2 1959 17419
1st HALF PAID MAY 29 1959 10961
93 93
182 04 186
93 93

Assessment Roll and Tax List of Real Property in the Town of Moorfield

Cass County, Minnesota, for Taxes for the Year 1958.

Indicate Type of Property: R-Residential, C-Commercial, I-Industrial, U-Utility, F-Farm, L-Lakeshore, T-Timber, M-Mineral

Table with columns: IN WHOSE NAME ASSESSED, TO WHOM TRANSFERRED, DESCRIPTION OF PROPERTY, TRUE AND FULL VALUATIONS, ASSESSED VALUATIONS, VALUATIONS BY SCHOOL DISTRICTS AS EQUALIZED BY DEPARTMENT OF TAXATION, SOLD FOR TAXES, SPECIAL TAXES, TOTAL TAXES, PAID, WHEN PAID, Number of Receipt, March Settlement, June Settlement, November Settlement, Collections to First Monday in January 1960, Delinquent on First Monday in January 1960, Total Delinquent Tax and Penalty, REMARKS.

Assessment Roll and Tax List of Real Property in the Town of Deerfield

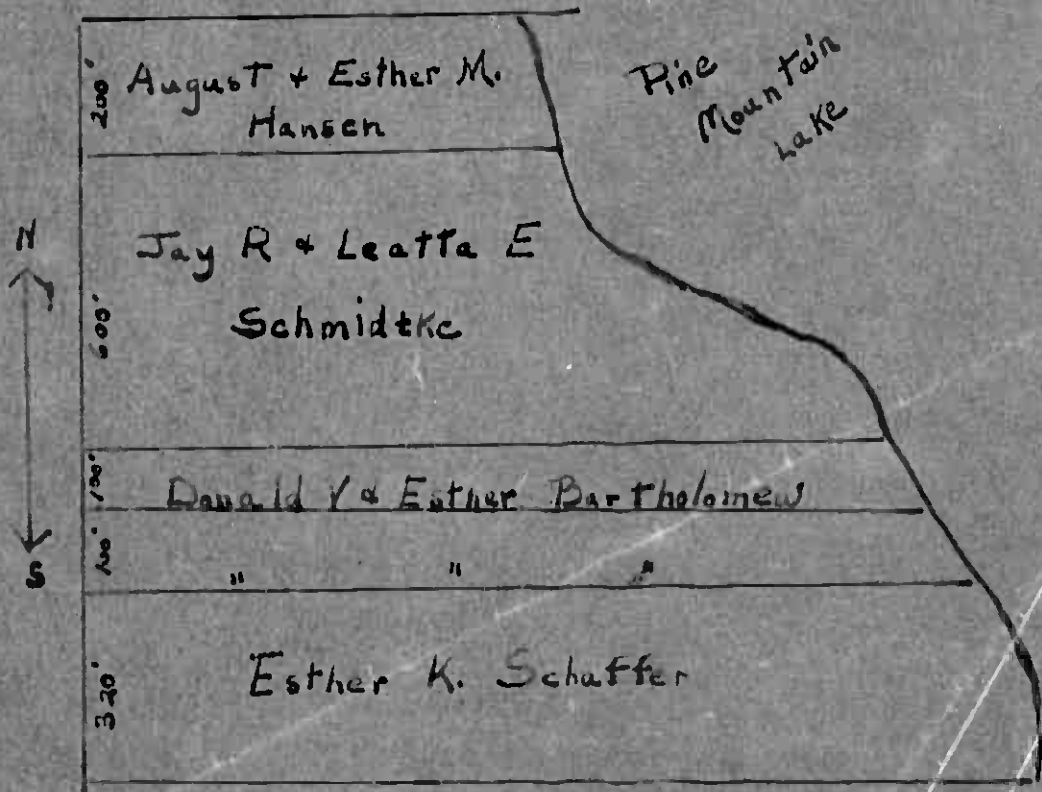
Cass County, Minnesota, for Taxes for the Year 1958.

Form 500 (1957) Minnesota Department of Taxation. Indicate Type of Property: R-Residential, C-Commercial, I-Industrial, U-Utility, F-Farm, L-Lakeshore, T-Timber, M-Mineral

Table with columns: IN WHOSE NAME ASSESSED, TO WHOM TRANSFERRED, SUBDIVISION, TRUE AND FULL VALUATIONS, ASSESSED VALUATIONS, VALUATIONS BY SCHOOL DISTRICTS AS EQUALIZED BY DEPARTMENT OF TAXATION, SOLD FOR TAXES, PAID, WHEN PAID, Number of Receipt, March Settlement 1959, June Settlement 1959, November Settlement 1959, Collections to First Monday in January 1960, Delinquent on First Monday in January 1960, Total Delinquent Tax and Penalty, REMARKS.

Gov't Lot 4

Sec - 25-137-01



Assessment Roll and Tax List of Real Property in the Town of Deepfield, Cass County, Minnesota, for Taxes for the Year 1958.

Cass County, Minnesota, for Taxes for the Year 1958.

Table with columns for IN WHOSE NAME ASSESSED, TO WHOM TRANSFERRED, DESCRIPTION OF PROPERTY, TRUE AND FULL VALUATIONS, ASSESSED VALUATIONS, VALUATIONS BY SCHOOL DISTRICTS AS EQUALIZED BY DEPARTMENT OF TAXATION, TAXES, PAID, WHEN PAID, and REMARKS.

Assessment Roll and Tax List of Real Property in the Town of Deerfield

Indicate Type of Property: R-Residential, C-Commercial, I-Industrial, U-Utility, F-Farm, L-Lakeshore, T-Timber, M-Mineral

Table with columns: IN WHOSE NAME ASSESSED, TO WHOM TRANSFERRED, SUBDIVISION, TRUE AND FULL VALUATIONS (LAND, BUILDINGS, MACHINERY, TOTAL), ASSESSED VALUATIONS (RURAL, ALL OTHER, MACHINERY, TOTAL ASSESSED VALUE), and FINAL EQUALIZED VALUE.

Cass County, Minnesota, for Taxes for the Year 1958.

Table with columns: SOLD FOR TAXES, VALUATIONS BY SCHOOL DISTRICTS AS EQUALIZED BY DEPARTMENT OF TAXATION, Tax including State Homestead, State Tax on Non-Homestead, SPECIAL TAXES, TOTAL TAXES, PAID, WHEN PAID, Number of Receipt, March Settlement 1959, June Settlement 1959, November Settlement 1959, Penalty, Collections to First Monday in January 1960, Delinquent on First Monday in January 1960, Total Delinquent Tax and Penalty, REMARKS.

Assessment Roll and Tax List of Real Property in the Town of Deerfield

Indicate Type of Property: R-Residential, C-Commercial, I-Industrial, U-Utility, F-Farm, L-Lakeshore, T-Timber, M-Mineral

Cass County, Minnesota, for Taxes for the Year 1958.

Table with columns for property description, valuations, taxes, and payment status. Includes handwritten entries for names like Warren Holden and Donnie Denning.

Assessment Roll and Tax List of Real Property in the Town of Deerfield of Minnesota

Cass County, Minnesota, for Taxes for the Year 1958.

Form 5011 (1-1-58) Minnesota Department of Taxation. * Indicate Type of Property: R-Residential, C-Commercial, I-Industrial, U-Utility, F-Farm, L-Lakeshore, T-Timber, M-Mineral

Table with columns: IN WHOSE NAME ASSESSED, TO WHOM TRANSFERRED, DESCRIPTION OF PROPERTY, TRUE AND FULL VALUATIONS, ASSESSED VALUATIONS, VALUATIONS BY SCHOOL DISTRICTS AS EQUALIZED BY DEPARTMENT OF TAXATION, TAXES, PAID, WHEN PAID, Number of Receipt, March Settlement 1959, June Settlement 1959, November Settlement 1959, Collections to First Monday in January 1960, Delinquent on First Monday in January 1960, Total Delinquent Tax and Penalty, REMARKS.

