

ASSESSMENT & TAX LIST - 1959
Crooked Lake

NAME OF OWNER

TABULAR SCHEDULE OF VALUATIONS,

LEVIED IN THE Town OF Crooked Lake

RATES AND TAXES

COUNTY OF CASS, STATE OF MINNESOTA

School District No.	VALUATION BY SCHOOL DISTRICTS				RATE OF STATE TAXES		RATE OF COUNTY TAXES										RATE OF TOWN TAXES										SCHOOL TAXES			TAXES LEVIED									
	Agri-cultural Lands	Non-Agri-cultural Lands	Personal Property	Total Value of all Property except Money and Credits	Total Rate of State Tax	Rate	Rev.	R. & B.	Welfare	Bonds and Int.	R. & B. Fed Proj.	Total Rate of County Tax	Rev.	R. & B.	Drag Tax	State Loan	Rate	Local	Special	State Loan	Deficiency	Tuition	Transportation	Total Rate of Sch'l Tax	Total Rate of all Taxes	Local 1 Mill	Special	State Loan	Def.	C.O. PERA Bld.	Total School Taxes	FUNDS	Rate	Amounts					
118	923	64,389.79	7447	72,759	11.8	8.10	35.68	15.61.95			5.5.79	129.04	3.5	15.8		2.1		21.4	25.	34.67			11.7	6.13.7	81.17	239.71		23.07	32.00	108.0	5.63	3.41	74.91	State - Non-Homestead,		345.55			
																			50.	34.67			11.7	6.13.7	106.17	264.71		3591.80	2490.55	840.48	438.20	265.79	7626.82	State - Homestead,		558.94			
																													3614.87	2522.55	851.28	443.83	269.20	7701.73	County Revenue,		2596.13		
																																				County Road and Bridge,		1091.39	
																																				County Welfare,		4507.52	
																																				Bonds and Interest		145.55	
																																				Co. Nurse		145.55	
																																				R. & B. Bldg.		254.68	
																																				Town Revenue,		1149.60	
																																				Town Road and Bridge,		152.80	
																																				Town State Loan.		1557.08	
																																					There		
																																					School Local 1 Mill,		
																																					School Special,		3614.87
																																					School State Loan,		2522.55
																																					Deficiency		
																																					Tuition		
																																					Transportation		
																																					C.O.		851.28
																																					P.E.R.A.		443.83
																																					Bonds & Int.		369.20

Assessed Value	Rural	All Other	Personal Property	Total
Homestead	13,386			13,386
Non-Homestead	51,926		7447	59,373
Total	65,312		7447	72,759

C-2 3779
other 3668

County: R & B Fed Proj. 363.80
P.E.R.A. 421.27
Agri. Assn. 36.38
Transp. 81.49
9389.08

Total Taxes Real Estate 17,588.56
Pers Prop. 1963.82
Total 19,552.38

Total Number of Acres 72.88.93
Total Levied, \$ 19,552.38
I, L. C. Peterson
Auditor of said County and State aforesaid, do hereby certify that the foregoing is a true and correct Schedule, showing the valuation of all the taxable property, in the Town of Crooked Lake, in said County, the several rates of Taxation and Totals of the several Tax Funds levied thereon for the year A. D. 1959.
Witness my hand and official seal, this 29th day of December, A. D. 1959.

L. C. Peterson, County Auditor
By Helen Biller, Deputy

SEAL

The Harrowe Real Estate Auditor's Part of Lake Harrowe, Neshburn, Ontario, Paula Duggs Roosevelt and Helmut Roosevelt Lake Harrowe

COLLECTIONS OF TAXES OF 1957 OF Town of Crooked Lake, CASS COUNTY, MINNESOTA

FUNDS	MARCH SETTLEMENT	JUNE SETTLEMENT	NOV. SETTLEMENT	Amount Collected from Nov. 1956 to First Monday in Jan. 1957	REDUCTIONS	Total Reductions and Collected	BALANCE UNCOLLECTED	ADDITIONS	Total Uncollected to First Monday in January, 1957
	1956	1957	1956						
State-Non-Homestead,	33 88	236 73	59 91						
State-Homestead,	46 41	372 63	99 40	96					
County Revenue,	316 84	1651 94	443 66	425					
County Road and Bridge,	133 20	694 48	186 52	178					
County Welfare,	550 11	2868 21	770 32	737					
County Bond and Interest, Transp.	9 94	51 86	13 92	13					
Q. + B. - In. P.	44 40	231 49	62 17	60					
PERA	51 42	268 06	72 00	69					
Co. Nurse	17 76	92 60	24 87	24					
Town Revenue,	31 28	162 05	43 52	42					
Town Road and Bridge,	148 30	731 52	196 47	188					
Town Drug, Fire	18 64	97 22	26 11	25					
Town State Loan,									
Q. + B. Bldg.	17 76	92 60	24 87	24					
Agric. Adm.	4 44	23 15	6 22	06					
School Local 1 Mill,									
School Special,	444 00	2306 29	615 32	595					
School State Loan,									
Deficiency	307 87	1605 17	431 10	412					
Tuition									
Transportation									
C. O.	103 90	541 69	145 48	139					
PERA	54 17	282 44	75 85	72					
B. + Int.	32 86	171 30	46 01	45					
TOTALS	2358 98	12481 49	3343 72	3150					

SCHOOL DISTRICT NO.	LOCAL 1 MILL	SPECIAL	STATE LOAN	Def.	C. O.	PERA	B. + Int.	TOTALS
	118-7A		444 00		307 87	103 90	54 17	
Totals		444 00		307 87	103 90	54 17	32 86	942 80
118-A		8 66		12 00	7 05	2 12	1 28	28 11
118-7A		2297 63		1593 17	537 64	280 32	170 02	4878 78
Totals		2306 29		1605 17	541 69	282 44	171 30	4906 89
118-A		6 43		8 90	3 00	1 57	9 5	20 85
118-7A		608 89		422 20	142 48	74 28	45 06	1292 91
Totals		615 32		431 10	145 48	75 85	46 01	1313 76
118-7A		5 95		4 12	1 39	7 2	4 5	12 63
Totals		5 95		4 12	1 39	7 2	4 5	12 63
ADDITIONS								
Totals								
REDUCTIONS								
Totals								

The Narrows Auditor's Plat of Lake
 Washburn Quillets
 Paul & Dora Roosevelt
 Roosevelt Lake Hotel
 Roosevelt Lake Hotel

Assessment Roll and Tax List of Real Property in the Town of Crooked Lake, Cass County, Minnesota, for Taxes for the Year 1959.

Cass County, Minnesota, for Taxes for the Year 1959.

Real Estate

Main table with columns: IN WHOSE NAME ASSESSED, TO WHOM TRANSFERRED, DESCRIPTION OF PROPERTY, TRUE AND FULL VALUATIONS, ASSESSED VALUATIONS, VALUATIONS BY SCHOOL DISTRICTS AS EQUALIZED BY DEPARTMENT OF TAXATION, TAXES, PAID, WHEN PAID, Number of Receipt, March Settlement 1960, June Settlement 1960, Penalty, November Settlement 1960, Penalty, Collections to First Monday in January 1961, Penalty, Delinquent on First Monday in January 1961, Total Delinquent Tax and Penalty, REMARKS.

The Harrows

Auditor's Plat of Lake Washburn Outlots

Paul G. Byers Roosevelt and Helgeton

Roosevelt Lake Helgeton

Assessment Roll and Tax List of Real Property in the Town of Crooked Lake

Indicate Type of Property: R-Residential, C-Commercial, I-Industrial, U-Utility, F-Farm, L-Lakeshore, T-Timber, M-Mineral

Cass County, Minnesota, for Taxes for the Year 1959.

Table with columns: IN WHOSE NAME ASSESSED, TO WHOM TRANSFERRED, DESCRIPTION OF PROPERTY, TRUE AND FULL VALUATIONS, ASSESSED VALUATIONS, VALUATIONS BY SCHOOL DISTRICTS AS EQUALIZED BY DEPARTMENT OF TAXATION, TAXES, PAID, WHEN PAID, etc.

Real Estate

The Harrows

Auditor's Plat of Lake Washburn Outlets

Shale Digs Hooservei and Helldahl

Hooservei Lake Helldahl

Hooservei Lake Helldahl

Hooservei Lake Helldahl

Hooservei Lake Helldahl

Hooservei Lake Helldahl

Assessment Roll and Tax List of Real Property in the Town of Crooked Lake, Cass County, Minnesota, for Taxes for the Year 1959.

Cass County, Minnesota, for Taxes for the Year 1959.

Table with columns: IN WHOSE NAME ASSESSED, TO WHOM TRANSFERRED, DESCRIPTION OF PROPERTY, TRUE AND FULL VALUATIONS, ASSESSED VALUATIONS, VALUATIONS BY SCHOOL DISTRICTS AS EQUALIZED BY DEPARTMENT OF TAXATION, TAXES, PAID, WHEN PAID, SPECIAL TAXES, TOTAL TAXES, REMARKS.

Real Estate

The Harrows

Auditor's Plat of Lake

Paul Biggs Roosevelt and Helmer

Paul Biggs Roosevelt and Helmer

Roosevelt Lake Falls

Assessment Roll and Tax List of Real Property in the Town of Crooked Lake

Indicate Type of Property: R-Residential, C-Commercial, I-Industrial, U-Utility, F-Farm, L-Lakeshore, T-Timber, M-Mineral

Cass County, Minnesota, for Taxes for the Year 1959.

Table with columns: IN WHOSE NAME ASSESSED, TO WHOM TRANSFERRED, DESCRIPTION OF PROPERTY, TRUE AND FULL VALUATIONS, ASSESSED VALUATIONS, VALUATIONS BY SCHOOL DISTRICTS AS EQUALIZED BY DEPARTMENT OF TAXATION, TAXES, PAID, WHEN PAID, etc.

Real Estate

The Harrows

Auditor's Plat of Lake

Paul G. Biggs

Booselet Lake

Booselet Lake

Assessment Roll and Tax List of Real Property in the Town of Crooked Lake, Cass County, Minnesota, for Taxes for the Year 1959.

Cass County, Minnesota, for Taxes for the Year 1959.

Indicate Type of Property: R-Residential, C-Commercial, I-Industrial, U-Utility, F-Farm, L-Lakeshore, T-Timber, M-Mineral

Main table with columns: IN WHOSE NAME ASSESSED, TO WHOM TRANSFERRED, DESCRIPTION OF PROPERTY, TRUE AND FULL VALUATIONS, ASSESSED VALUATIONS, VALUATIONS BY SCHOOL DISTRICTS AS EQUALIZED BY DEPARTMENT OF TAXATION, TAXES, PAID, WHEN PAID, etc.

Real Estate

The Harrows

Auditor's Plat of Lake... Paul Biggs Roosevelt and Helmer...

Roosevelt Lake...

Assessment Roll and Tax List of Real Property in the Town of Crooked Lake

Indicate Type of Property: R-Residential, C-Commercial, I-Industrial, U-Utility, F-Farm, L-Lakeshore, T-Timber, M-Mineral

Cass County, Minnesota, for Taxes for the Year 1959.

Table with columns: IN WHOSE NAME ASSESSED, TO WHOM TRANSFERRED, DESCRIPTION OF PROPERTY, TRUE AND FULL VALUATIONS, ASSESSED VALUATIONS, VALUATIONS BY SCHOOL DISTRICTS AS EQUALIZED BY DEPARTMENT OF TAXATION, TAXES, PAID, WHEN PAID, Number of Receipt, March Settlement 1960, June Settlement 1960, Penalty, November Settlement 1960, Penalty, Collections to First Monday in January 1961, Penalty, Delinquent on First Monday in January 1961, Total Delinquent Tax and Penalty, REMARKS.

Real Estate

The Herrows

Auditor's Plat of Lake Park, Big Lake, Hennepin County, Minn.

Paula Berg Roosevelt and Helmut Berg

Roosevelt Lake Helmut Berg

Assessment Roll and Tax List of Real Property in the Town of Crooked Lake

Form 5C - MILLER-DAVIS CO., MINNEAPOLIS

Indicate Type of Property: R-Residential, C-Commercial, I-Industrial, U-Utility, F-Farm, L-Lakeshore, T-Timber, M-Mineral

Cass County, Minnesota, for Taxes for the Year 1959.

Table with columns: IN WHOSE NAME ASSESSED, TO WHOM TRANSFERRED, DESCRIPTION OF PROPERTY, TRUE AND FULL VALUATIONS, ASSESSED VALUATIONS, VALUATIONS BY SCHOOL DISTRICTS AS EQUALIZED BY DEPARTMENT OF TALENTION, SOLD FOR TAXES, SPECIAL TAXES, TOTAL TAXES, PAID, WHEN PAID, Number of Receipt, March Settlement 1960, June Settlement 1960, November Settlement 1960, Collections to First Monday in January 1961, Delinquent on First Monday in January 1961, Total Delinquent Tax and Penalty, REMARKS.

James & Mae R. Wittkus

1 East Lot 6

17 139 26 50 98

99 Alder St. S.B.

467

1 118 382 467 224 74 290 227 64

PAID IN FULL MAY 24 1960 12167

12167

REMARKS

Paul E. & Shelma M. Kroschnek

2 East Lot 5

33 56

467

1 118 382 467 224 74 290 227 64

PAID IN FULL MAY 24 1960 12167

12167

REMARKS

Glenn E. & Patricia J. Mechelke

9 East Lot 4

40 69

300

1 118 382 300 177 36 93 179 22

2nd HALF PAID AUG 29 1960 16304

16304

REMARKS

Mae M. Morrison

12 East Lot 3

21 13

140

1 118 382 140 370 6 44 379 4

2nd HALF PAID OCT 27 1960 17000

17000

REMARKS

Erwin & Annette J. Gordin

14 SE 1/4 of SW 1/4 less S. 100'

5 83

Repurchased Nov. 8, 1960 1959 Tax paid on Feb 13, 1960

90

1 118 382 90 23 82 28 243 8

2nd HALF PAID SEP 9 1960 16323

16323

REMARKS

George & Sophie Mechow

17 NW 1/4 of SE 1/4

40

36

1 118 382 36 95 2 95 2

PAID IN FULL MAY 24 1960 12167

12167

REMARKS

(See #17 continued on next page)

312 19

53

1 118 382 53 140 2 32 143 4

PAID IN FULL MAY 23 1960 12151

12151

REMARKS

58314 856 59170

43513 14705

REMARKS

Vertical text on the right edge of the page, including 'The Harrows' and 'Auditor's Plat of Lake'.

Assessment Roll and Tax List of Real Property in the Town of Crooked Lake, Cass County, Minnesota, for Taxes for the Year 1959.

Cass County, Minnesota, for Taxes for the Year 1959.

Form 30 - MILLER-DAVIS CO., MINNEAPOLIS

Indicate Type of Property: R-Residential, C-Commercial, I-Industrial, U-Utility, F-Farm, L-Lakeshore, T-Timber, M-Mineral

Table with columns: IN WHOSE NAME ASSESSED, TO WHOM TRANSFERRED, DESCRIPTION OF PROPERTY, TRUE AND FULL VALUATIONS, ASSESSED VALUATIONS, VALUATIONS BY SCHOOL DISTRICTS AS EQUALIZED BY DEPARTMENT OF TAXATION, TAXES, PAID, WHEN PAID, Number of Receipt, March Settlement 1960, June Settlement 1960, Penalty, November Settlement 1960, Penalty, Collections to First Monday in January 1961, Penalty, Delinquent on First Monday in January 1961, Total Delinquent Tax and Penalty, REMARKS.

Vertical text on the right edge: The Harrows Auditor's Plat of Lake Crooked Lake, 1918, Paul Bryg Roseveel and Helge Roseveel Lake Harrows

Assessment Roll and Tax List of Real Property in the Town of Crooked Lake, Cass County, Minnesota, for Taxes for the Year 1959.

Cass County, Minnesota, for Taxes for the Year 1959.

Table with columns for IN WHOSE NAME ASSESSED, TO WHOM TRANSFERRED, DESCRIPTION OF PROPERTY, TRUE AND FULL VALUATIONS, ASSESSED VALUATIONS, VALUATIONS BY SCHOOL DISTRICTS AS EQUALIZED BY DEPARTMENT OF TAXATION, and REMARKS. Includes handwritten entries for Frank H. Langhans, Mand J. Langhans, Gilbert R. Salin & S. L. Schypatuck, and Moneta Improvement Co.

Handwritten notes: 240, 80, 160

Vertical text on the right edge: Auditor's Plat of Lake Crooked Lake, Cass County, Minnesota, 1959

Assessment Roll and Tax List of Real Property in the Town of Carleton Lake

Cass County, Minnesota, for Taxes for the Year 1959

Form 50 MILLER-DAVIS CO., MINNEAPOLIS

Indicate Type of Property: R-Residential, C-Commercial, I-Industrial, U-Utility, F-Farm, L-Lakeshore, T-Timber, M-Mineral

Main table with columns: IN WHOSE NAME ASSESSED, TO WHOM TRANSFERRED, DESCRIPTION OF PROPERTY, TRUE AND FULL VALUATIONS, ASSESSED VALUATIONS, VALUATIONS BY SCHOOL DISTRICTS AS EQUALIZED BY DEPARTMENT OF TAXATION, TAXES, PAID, WHEN PAID, etc.

Vertical text on the right edge: Auditor's Plat of Lake Carleton, Paul J. Papp, Roosevelt Ave. Heights 14, Roosevelt Lake Heights & 900

Assessment Roll and Tax List of Real Property in the Town of Crooked Lake

Form 50 - MILLER-DAVIS CO., MINNEAPOLIS

Indicate Type of Property: R-Residential, C-Commercial, I-Industrial, U-Utility, F-Farm, L-Lakeshore, T-Timber, M-Mineral

Cass County, Minnesota, for Taxes for the Year 1959.

Main table with columns: IN WHOSE NAME ASSESSED, TO WHOM TRANSFERRED, DESCRIPTION OF PROPERTY, TRUE AND FULL VALUATIONS, ASSESSED VALUATIONS, VALUATIONS BY SCHOOL DISTRICTS AS EQUALIZED BY DEPARTMENT OF TAXATION, TAXES, PAID, WHEN PAID, etc.

Real Est

Real Est

Auditor's Plat of Lake Superior Outlots, Paul & Prog Roosevelt and Health, Roosevelt Lake Hotel & Soc

N Line of Govt Lot 4 Sec 23-139-26

	1.36 acs			
	2.05 acs	{	Walter M & Alberta J Jaks	A
	4.10 acs		Alma & Helen Brunna	B
40'	6.12 acs		Eva Randsahl Jphler & Joseph Kohler	C & D
	6.27 acs	{	Harvel B & Geo W Olson	E
	3.21 acs		Alma & Helen Brunna	F
	3.22 acs		Alma & Helen Brunna	G
	3.29 acs		Lawrence & Loretta Proqua	H
	3.31 acs		Louisa J & Pearl M Sandtrack	I
	3.35 acs		Minnie J Falk	J
	3.38 acs	{	Wm J & Delia M Smith	K
	3.40 acs			
	4.56 acs		Wm J & Delia M Smith	M
			Wm J & Delia M Smith	N
	9.70 acs			O

S. Line of Govt Lot 4

100' 50' 33'
100'
150'
75'
75'
75'
75'
75'
75'
75'
75'
75'
100'
210 5

40' E Pater 2 acs
E Nelson 12 acs

Assessment Roll and Tax List of Real Property in the Town of Crooked Lake

Indicate Type of Property: R-Residential, C-Commercial, I-Industrial, U-Utility, F-Farm, L-Lakeshore, T-Timber, M-Mineral

Cass County, Minnesota, for Taxes for the Year 1959.

Table with columns: IN WHOSE NAME ASSESSED, TO WHOM TRANSFERRED, DESCRIPTION OF PROPERTY, TRUE AND FULL VALUATIONS, ASSESSED VALUATIONS, VALUATIONS BY SCHOOL DISTRICTS AS EQUALIZED BY DEPARTMENT OF TAXATION, TAXES, PAID, WHEN PAID, etc.

Vertical text on the right edge: Auditor's Plat of Lake... Auditor's Plat of Lake... Auditor's Plat of Lake...

Assessment Roll and Tax List of Real Property in the Town of Crooked Lake

Cass County, Minnesota, for Taxes for the Year 1959.

Indicate Type of Property: R-Residential, C-Commercial, I-Industrial, U-Utility, F-Farm, L-Lakeshore, T-Timber, M-Mineral

Form 30 - MILLER-DAVIS CO., MINNEAPOLIS

Main table with columns: IN WHOSE NAME ASSESSED, TO WHOM TRANSFERRED, DESCRIPTION OF PROPERTY, TRUE AND FULL VALUATIONS, ASSESSED VALUATIONS, VALUATIONS BY SCHOOL DISTRICTS AS EQUALIZED BY DEPARTMENT OF TAXATION, TAXES, PAID, WHEN PAID, Number of Receipt, March Settlement 1960, June Settlement 1960, November Settlement 1960, Collections to First Monday in January 1961, Delinquent on First Monday in January 1961, Total Delinquent Tax and Penalty, REMARKS.

Vertical text on the right edge: Auditor's Plat of Lake Crooked Lake, Cass County, Minnesota, 1959

Assessment Roll and Tax List of Real Property in the Town of Crossed Lake,

Form 30 - MILLER-DAVIS CO., MINNEAPOLIS * Indicate Type of Property: R-Residential, C-Commercial, I-Industrial, U-Utility, F-Farm, L-Lakeshore, T-Timber, M-Mineral

Table with columns: IN WHOSE NAME ASSESSED, TO WHOM TRANSFERRED, DESCRIPTION OF PROPERTY, TRUE AND FULL VALUATIONS, ASSESSED VALUATIONS, FINAL EQUALIZED VALUE. Includes handwritten entries for Moneta Improvement Co, H.B. Meyer, Alfred L. Olson, etc.

Cass County, Minnesota, for Taxes for the Year 1959.

Table with columns: SOLD FOR TAXES, VALUATIONS BY SCHOOL DISTRICTS AS EQUALIZED BY DEPARTMENT OF TAXATION, SPECIAL TAXES, TOTAL TAXES, PAID, WHEN PAID, Number of Receipt, March Settlement 1960, June Settlement 1960, November Settlement 1960, Collections to First Monday in January 1961, Delinquent on First Monday in January 1961, Total Delinquent Tax and Penalty, REMARKS. Includes handwritten entries for 1st and 2nd half payments.

Vertical text on the right edge: Auditor's Plat of Lake Crossed Lake, 1959, and other administrative notes.

Assessment Roll and Tax List of Real Property in the Town of Caroked Lake

Cass County, Minnesota, for Taxes for the Year 1959.

Table with columns: IN WHOSE NAME ASSESSED, TO WHOM TRANSFERRED, DESCRIPTION OF PROPERTY, TRUE AND FULL VALUATIONS, ASSESSED VALUATIONS, VALUATIONS BY SCHOOL DISTRICTS AS EQUALIZED BY DEPARTMENT OF TAXATION, TAXES, SPECIAL TAXES, TOTAL TAXES, PAID, WHEN PAID, Number of Receipt, March Settlement 1960, June Settlement 1960, November Settlement 1960, Collections to First Monday in January 1961, Delinquent on First Monday in January 1961, Total Delinquent Tax and Penalty, REMARKS.

Real Est.

Harrows

Auditor's Plat of Lake

Scale: 1/2" = 100'

Hoover's

Hoover's

Hoover's

Hoover's

Hoover's

Hoover's

Hoover's

405.9'

897.2'

628.24'

661.16' 561.16' 511.16' 486.16' 261'

100'

50'

75'

175.16'

100'

171'

C. Lahe #6459

E. C. Berry #6461-B 683.12'

S. C. Berry #6461-C

A. Berry #6461-D

H. D. Berry #6461-E

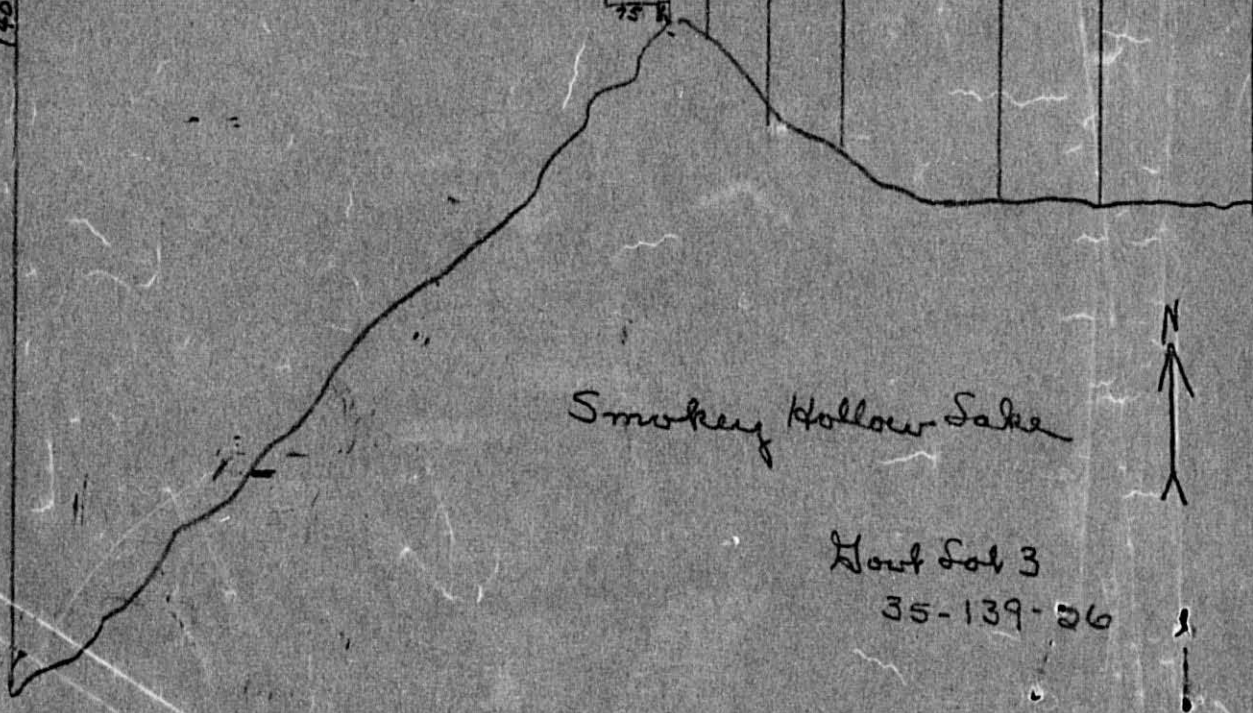
H. O. Berry #6461-A

Anderson #6461

Smokey Hollow Lake

Plot Sol 3

35-139-26



Assessment Roll and Tax List of Real Property in the Town of Crooked Lake, Cass County, Minnesota, for Taxes for the Year 1959.

Cass County, Minnesota, for Taxes for the Year 1959.

Table with columns: IN WHOSE NAME ASSESSED, TO WHOM TRANSFERRED, SUBDIVISION, TRUE AND FULL VALUATIONS (LAND, BUILDINGS, MACHINERY, TOTAL), ASSESSED VALUATIONS (RURAL, ALL OTHER), VALUATIONS BY SCHOOL DISTRICTS AS EQUALIZED BY DEPARTMENT OF TAXATION, SOLD FOR TAXES, SPECIAL TAXES, TOTAL TAXES, PAID, WHEN PAID, Number of Receipt, March Settlement, June Settlement, November Settlement, Penalty, Collections to First Monday in January 1961, Delinquent on First Monday in January 1961, Total Delinquent Tax and Penalty, REMARKS.

Real Estate

Real Estate

Plat of Outlot A of ... Plat of Outlot B of ... Plat of Outlot C of ... Plat of Outlot D of ... Plat of Outlot E of ... Plat of Outlot F of ... Plat of Outlot G of ... Plat of Outlot H of ... Plat of Outlot I of ... Plat of Outlot J of ... Plat of Outlot K of ... Plat of Outlot L of ... Plat of Outlot M of ... Plat of Outlot N of ... Plat of Outlot O of ... Plat of Outlot P of ... Plat of Outlot Q of ... Plat of Outlot R of ... Plat of Outlot S of ... Plat of Outlot T of ... Plat of Outlot U of ... Plat of Outlot V of ... Plat of Outlot W of ... Plat of Outlot X of ... Plat of Outlot Y of ... Plat of Outlot Z of ...

Assessment Roll and Tax List of Real Property in the Town of Crooked Lake

Cass County, Minnesota, for Taxes for the Year 1959.

Form 30 - MILLER-DAVIS CO., MINNEAPOLIS. * Indicate Type of Property: R-Residential, C-Commercial, I-Industrial, U-Utility, F-Farm, L-Lakeshore, T-Timber, M-Mineral

The Narrows, The Plat of Lake Auburn Outlots, Ringdale Bros. Roosevelt Trails

Table with columns: IN WHOSE NAME ASSESSED, TO WHOM TRANSFERRED, SUBDIVISION, TRUE AND FULL VALUATIONS (LAND, BUILDINGS, MACHINERY, TOTAL), VALUATIONS BY SCHOOL DISTRICTS AS EQUALIZED BY DEPARTMENT OF TAXATION, SOLD FOR TAXES, PAID, WHEN PAID, SPECIAL TAXES, TOTAL TAXES, March Settlement, June Settlement, November Settlement, Collections to First Monday in January 1961, Delinquent on First Monday in January 1961, Total Delinquent Tax and Penalty, REMARKS.

Plat of Outlot A. of Ringdale Bros. Roosevelt Lake Heights & So

Assessment Roll and Tax List of Real Property in the Town of Crooked Lake

Form 30 - MILLER-DAVIS CO., MINNEAPOLIS

Indicate Type of Property: R-Residential, C-Commercial, I-Industrial, U-Utility, F-Farm, L-Lakeshore, T-Timber, M-Mineral

Cass County, Minnesota, for Taxes for the Year 1959.

Vertical text on the left edge: The Marrows, Crooked Lake, Burn Outlots, Mingsdale Bros, Roosevelt Trails

Main table with columns: IN WHOSE NAME ASSESSED, TO WHOM TRANSFERRED, SUBDIVISION, TRUE AND FULL VALUATIONS, ASSESSED VALUATIONS, FINAL EQUALIZED VALUE.

Table with columns: VALUATIONS BY SCHOOL DISTRICTS AS EQUALIZED BY DEPARTMENT OF TAXATION, SOLD FOR TAXES, SPECIAL TAXES, TOTAL TAXES, PAID, WHEN PAID, Number of Receipt, March Settlement, June Settlement, November Settlement, Collections to First Monday in January 1961, Delinquent on First Monday in January 1961, Total Delinquent Tax and Penalty, REMARKS.

Vertical text on the right edge: Plat of Ppg. Lake, Plat of Outlot A, Iowa Helget's, Roosevelt Lake Helget's

Assessment Roll and Tax List of Real Property in the Town of Crooked Lake

Form 50 - MILLER-DAVIS CO., MINNEAPOLIS

Indicate Type of Property: R-Residential, C-Commercial, I-Industrial, U-Utility, F-Farm, L-Lakeshore, T-Timber, M-Mineral

Cass County, Minnesota, for Taxes for the Year 1959.

Vertical text on the left edge: The Plat of Lake... Roosevelt Trails

Main table with columns: IN WHOSE NAME ASSESSED, TO WHOM TRANSFERRED, SUBDIVISION, TRUE AND FULL VALUATIONS, ASSESSED VALUATIONS, FINAL EQUALIZED VALUE.

Table with columns: VALUATIONS BY SCHOOL DISTRICTS AS EQUALIZED BY DEPARTMENT OF TAXATION, Tax including State Homestead, State Tax on Non-Homestead, SPECIAL TAXES, TOTAL TAXES, PAID, WHEN PAID, Number of Receipt, March Settlement 1960, June Settlement 1960, November Settlement 1960, Collections to First Monday in January 1961, Delinquent on First Monday in January 1961, Total Delinquent Tax and Penalty, REMARKS.

Vertical text on the right edge: Plat of... Roosevelt Lake... Roosevelt Lake

Assessment Roll and Tax List of Real Property in the Town of Crooked Lake

Indicate Type of Property: R-Residential, C-Commercial, I-Industrial, U-Utility, F-Farm, L-Lakeshore, T-Timber, M-Mineral

Form 30 MILLER-DAVIS CO., MINNEAPOLIS

Vertical text on the left edge: The N... of Lake... burn Outlots... Ringdale Bros. Roosevelt Trails

Table with columns: IN WHOSE NAME ASSESSED, TO WHOM TRANSFERRED, SUBDIVISION, DESCRIPTION OF PROPERTY, TRUE AND FULL VALUATIONS, ASSESSED VALUATIONS, FINAL EQUALIZED VALUE.

Cass County, Minnesota, for Taxes for the Year 1959.

Table with columns: VALUATIONS BY SCHOOL DISTRICTS AS EQUALIZED BY DEPARTMENT OF TAXATION, TAXES, PAID, WHEN PAID, Number of Receipt, March Settlement, June Settlement, Penalty, November Settlement, Collections to First Monday in January 1961, Delinquent on First Monday in January 1961, Total Delinquent Tax and Penalty, REMARKS.

Vertical text on the right edge: Ring Lake... Plat of Outlot A of... Iwana Heights... Ringdale Bros. Roosevelt Lake Heights, 300

Assessment Roll and Tax List of Real Property in the Town of Crooked Lake

Cass County, Minnesota, for Taxes for the Year 1959.

Indicate Type of Property: R-Residential, C-Commercial, I-Industrial, U-Utility, F-Farm, L-Lakeshore, T-Timber, M-Mineral

Table with columns: IN WHOSE NAME ASSESSED, TO WHOM TRANSFERRED, SUBDIVISION, TRUE AND FULL VALUATIONS, ASSESSED VALUATIONS, VALUATIONS BY SCHOOL DISTRICTS AS EQUALIZED BY DEPARTMENT OF TAXATION, TAXES, PAID, WHEN PAID, Number of Receipt, March Settlement, June Settlement, November Settlement, Collections to First Monday in January 1961, Delinquent on First Monday in January 1961, Total Delinquent Tax and Penalty, REMARKS.

Vertical text on the left margin: The N... of Lake... Burn Outlots... Tingsdale Bros... Roosevelt Trails

Vertical text on the right margin: Plat of Outlot A. of... Roosevelt Lake Helght... Tingsdale Bros... Roosevelt Lake Helght & So

Assessment Roll and Tax List of Real Property in the Town of Crooked Lake

Indicate Type of Property: R-Residential, C-Commercial, I-Industrial, U-Utility, F-Farm, L-Lakeshore, T-Timber, M-Mineral

Form 50 MILLER-DAVIS CO., MINNEAPOLIS

Table with columns: IN WHOSE NAME ASSESSED, TO WHOM TRANSFERRED, SUBDIVISION, Section of Lot, Town or Block, Reg., Number of Acres of Land, TRUE AND FULL VALUATIONS (RURAL, ALL OTHER, MACHINERY), ASSESSED VALUATIONS (RURAL, ALL OTHER, MACHINERY), TOTAL ASSESSED VALUE, Total Assessed Value as Equalized by the Board of Review, FINAL EQUALIZED VALUE.

Cass County, Minnesota, for Taxes for the Year 1959.

Table with columns: SOLD FOR TAXES, VALUATIONS BY SCHOOL DISTRICTS AS EQUALIZED BY DEPARTMENT OF TAXATION, Tax including State Homestead, State Tax on Non-Homestead, SPECIAL TAXES, TOTAL TAXES, PAID, WHEN PAID, Number of Receipt, March Settlement 1960, June Settlement 1960, November Settlement 1960, Collections to First Monday in January 1961, Delinquent on First Monday in January 1961, Total Delinquent Tax and Penalty, REMARKS.

Vertical text on the left edge: The Plat of Lake Burn Outlots, Tingsdale Bros. Roosevelt Trails, Plat of Outlot A. of I. Wash. Co., Iowana Heights, Roosevelt Lake Heights & Soo

Vertical text on the right edge: The Plat of Lake Burn Outlots, Tingsdale Bros. Roosevelt Trails, Plat of Outlot A. of I. Wash. Co., Iowana Heights, Roosevelt Lake Heights & Soo

Assessment Roll and Tax List of Real Property in the Town of Crooked Lake

Indicate Type of Property: R-Residential, C-Commercial, I-Industrial, U-Utility, F-Farm, L-Lakeshore, T-Timber, M-Mineral

Cass County, Minnesota, for Taxes for the Year 1959.

Table with columns: IN WHOSE NAME ASSESSED, TO WHOM TRANSFERRED, DESCRIPTION OF PROPERTY, TRUE AND FULL VALUATIONS, ASSESSED VALUATIONS, VALUATIONS BY SCHOOL DISTRICTS AS EQUALIZED BY DEPARTMENT OF TAXATION, PAID, WHEN PAID, SPECIAL TAXES, TOTAL TAXES, PAID, WHEN PAID, March Settlement 1960, June Settlement 1960, November Settlement 1960, Collections to First Monday in January 1961, Delinquent on First Monday in January 1961, Total Delinquent Tax and Penalty, REMARKS.

Vertical text on the left margin: The N... of Lake... Burn Outlots... Ringdale Bros... Roosevelt Trail... Iowa Heights...

Vertical text on the right margin: Ringdale Bros... Roosevelt Lake Heights... Plot of Outlot A... of... Ringburn Lake... Roosevelt Lake Heights...

Assessment Roll and Tax List of Real Property in the Town of Crooked Lake

Cass County, Minnesota, for Taxes for the Year 1959.

Form 50 MILLER-DAVIS CO., MINNEAPOLIS. Indicate Type of Property: R-Residential, C-Commercial, I-Industrial, U-Utility, F-Farm, L-Lakeshore, T-Timber, M-Mineral

Table with columns: IN WHOSE NAME ASSESSED, TO WHOM TRANSFERRED, SUBDIVISION, TRUE AND FULL VALUATIONS (LAND, BUILDINGS, MACHINERY, TOTAL), ASSESSED VALUATIONS (RURAL, ALL OTHER, MACHINERY, TOTAL), VALUATIONS BY SCHOOL DISTRICTS AS EQUALIZED BY DEPARTMENT OF TAXATION, SOLD FOR TAXES, PAID, WHEN PAID, SPECIAL TAXES, TOTAL TAXES, PAID, WHEN PAID, Number of Receipt, March Settlement, June Settlement, Penalty, November Settlement, Penalty, Collections to First Monday in January 1961, Delinquent on First Monday in January 1961, Total Delinquent Tax and Penalty, REMARKS.

Vertical text on the left margin: The Plat of Lakeburn Outlots, Magdale Bros. Roosevelt Trails, Roosevelt Lake Heights, Iowa Heights, Roosevelt Lake Heights.

Vertical text on the right margin: Plat of Outlot A. of Add'l 1/2 Section 19, Township 136 North, Range 10 West, Lake Laurence Point, Roosevelt Soc.

Assessment Roll and Tax List of Real Property in the Town of Crooked Lake

Form 5C - MILLER-DAVIS CO., MINNEAPOLIS
Indicate Type of Property: R-Residential, C-Commercial, I-Industrial, U-Utility, F-Farm, L-Lakeshore, T-Timber, M-Mineral

Table with columns: IN WHOSE NAME ASSESSED, TO WHOM TRANSFERRED, SUBDIVISION, TRUE AND FULL VALUATIONS, ASSESSED VALUATIONS, and FINAL EQUALIZED VALUE. Includes handwritten entries for various property owners like Roy H. Hickman and Nels Hart.

Cass County, Minnesota, for Taxes for the Year 1959.

Table with columns: VALUATIONS BY SCHOOL DISTRICTS AS EQUALIZED BY DEPARTMENT OF TAXATION, TAXES, PAID, WHEN PAID, and REMARKS. Includes handwritten entries for tax amounts and payment dates.

Vertical text on the left edge of the page listing various locations and property types like 'Tingdale Bros. Lake Roosevelt Shores' and 'Roosevelt Soc Lake Heights'.

Vertical text on the right edge of the page listing various locations and property types like 'Plat of Outlet A. of Washburn Lake' and 'Tingdale Bros Lake Laurence Point'.

Assessment Roll and Tax List of Real Property in the Town of Crooked Lake

Form 5C - MILLER-DAVIS CO., MINNEAPOLIS

Indicate Type of Property: R-Residential, C-Commercial, I-Industrial, U-Utility, F-Farm, L-Lakeshore, T-Timber, M-Mineral

Cass County, Minnesota, for Taxes for the Year 1959.

Table with columns: IN WHOSE NAME ASSESSED, TO WHOM TRANSFERRED, SUBDIVISION, TRUE AND FULL VALUATIONS, ASSESSED VALUATIONS, VALUATIONS BY SCHOOL DISTRICTS AS EQUALIZED BY DEPARTMENT OF TAXATION, TAXES, PAID, WHEN PAID, SPECIAL TAXES, TOTAL TAXES, and REMARKS.

Vertical text on the left margin: The Four's Flat of Lake, Mingdale Bros., Burn Outlots, Roosevelt Shores, Mingdale Bros., Deerfoot Trails, Iowa Heights, Lake Heights, Roosevelt Soo.

Vertical text on the right margin: State of Minnesota, Beach, Plat of Outlot A of, Lake Lawrence Point, Burn Place.

Assessment Roll and Tax List of Real Property in the Town of Crooked Lake

Form 30 - MILLER-DAVIS CO., MINNEAPOLIS

Indicate Type of Property: R-Residential, C-Commercial, I-Industrial, U-Utility, F-Farm, L-Lakeshore, T-Timber, M-Mineral

Cass County, Minnesota, for Taxes for the Year 1959.

Table with columns: IN WHOSE NAME ASSESSED, TO WHOM TRANSFERRED, DESCRIPTION OF PROPERTY, TRUE AND FULL VALUATIONS, ASSESSED VALUATIONS, VALUATIONS BY SCHOOL DISTRICTS AS EQUALIZED BY DEPARTMENT OF TAXATION, TAXES, PAID, WHEN PAID, SPECIAL TAXES, TOTAL TAXES, etc.

Vertical text on the left margin: For's Plat of Lake Washburn Outlots, Mingdale Bros. Washburn Lake, etc.

Vertical text on the right margin: Part of Part of Part of Lot 7 1st Shores, etc.

Assessment Roll and Tax List of Real Property in the Town of Crooked Lake

Indicate Type of Property: R-Residential, C-Commercial, I-Industrial, U-Utility, F-Farm, L-Lakeshore, T-Timber, M-Mineral

Form 30 - MILLER-DAVIS CO., MINNEAPOLIS

DESCRIPTION OF PROPERTY

TRUE AND FULL VALUATIONS

ASSESSED VALUATIONS

VALUATIONS BY SCHOOL DISTRICTS AS EQUALIZED BY DEPARTMENT OF TAXATION

Main data table with columns for property description, valuations, taxes, and payments. Includes handwritten entries for names like 'Marden & Martha Romning' and 'Dwight Warren Lemberg'.

Cass County, Minnesota, for Taxes for the Year 1959.

Vertical text on the left edge: 'Mingdale Bros', 'Washburn Pines', 'Washburn Lake Addition', etc.

Vertical text on the right edge: 'Karl's Washburn Lake Addition', 'Washburn Pines A Plenty on', 'Andresen Bay Jr's Bay', etc.

Assessment Roll and Tax List of Real Property in the Town of Crooked Lake

Cass County, Minnesota, for Taxes for the Year 1959.

Indicate Type of Property: R-Residential, C-Commercial, I-Industrial, U-Utility, F-Farm, L-Lakeshore, T-Timber, M-Mineral

Form 30 - MILLER-DAVIS CO., MINNEAPOLIS

Table with columns: IN WHOSE NAME ASSESSED, TO WHOM TRANSFERRED, SUBDIVISION, DESCRIPTION OF PROPERTY, TRUE AND FULL VALUATIONS, ASSESSED VALUATIONS, VALUATIONS BY SCHOOL DISTRICTS AS EQUALIZED BY DEPARTMENT OF TAXATION, TAX INCLUDING STATE HOMESTEAD, SPECIAL TAXES, TOTAL TAXES, PAID, WHEN PAID, Number of Receipt, March Settlement 1960, June Settlement 1960, Penalty, November Settlement 1960, Penalty, Collections to First Monday in January 1961, Penalty, Delinquent on First Monday in January 1961, Total Delinquent Tax and Penalty, REMARKS.

Vertical text on the left edge: Washburn Lake, Magdalen Bay, Lusher's Bay, etc.

Vertical text on the right edge: Kavel's, Magdalen Bay, Lusher's Bay, etc.

Assessment Roll and Tax List of Real Property in the Town of Crooked Lake, Cass County, Minnesota, for Taxes for the Year 1959.

Form 3C - MILLER-DAVIS CO., MINNEAPOLIS

Indicate Type of Property: R-Residential, C-Commercial, I-Industrial, U-Utility, F-Farm, L-Lakeshore, T-Timber, M-Mineral

Table with columns: IN WHOSE NAME ASSESSED, TO WHOM TRANSFERRED, SUBDIVISION, DESCRIPTION OF PROPERTY, TRUE AND FULL VALUATIONS, ASSESSED VALUATIONS, VALUATIONS BY SCHOOL DISTRICTS AS EQUALIZED BY DEPARTMENT OF TAXATION, SOLD FOR TAXES, PAID, WHEN PAID, Number of Receipt, March Settlement 1960, June Settlement 1960, Penalty, November Settlement 1960, Penalty, Collections to First Monday in January 1961, Penalty, Delinquent on First Monday in January 1961, Total Delinquent Tax and Penalty, REMARKS.

Vertical text on the left margin: Tingdale Bros, Washburn Lake, Pines A Plenty on Bay, Luschner's Bay, etc.

Vertical text on the right margin: Kaul's Hollow Lake, Washburn Lake Addition, etc.

Assessment Roll and Tax List of Real Property in the Town of Crooked Lake

Indicate Type of Property: R-Residential, C-Commercial, I-Industrial, U-Utility, F-Farm, L-Lakeshore, T-Timber, M-Mineral

Table with columns: IN WHOSE NAME ASSESSED, TO WHOM TRANSFERRED, SUBDIVISION, Sec. or Lot, Town or Block, Reg., Number of Acres of Land, TRUE AND FULL VALUATIONS (LAND, BUILDINGS, MACHINERY, TOTAL), ASSESSED VALUATIONS (RURAL, ALL OTHER, MACHINERY, TOTAL ASSESSED), Total Assessed Value, FINAL EQUALIZED VALUE.

Cass County, Minnesota, for Taxes for the Year 1959.

Table with columns: SOLD FOR TAXES, VALUATIONS BY SCHOOL DISTRICTS AS EQUALIZED BY DEPARTMENT OF TAXATION, Tax including State Homestead, State Tax on Non-Homestead, SPECIAL TAXES, TOTAL TAXES, PAID, WHEN PAID, Number of Receipt, March Settlement 1960, June Settlement 1960, Penalty, November Settlement 1960, Penalty, Collections to First Monday in January 1961, Delinquent on First Monday in January 1961, Total Delinquent Tax and Penalty, REMARKS.

Vertical text on the left edge of the page, including 'Kavli's Wood Lake Shores' and 'Patterson Roosevelt Lake Addition'.

Vertical text on the right edge of the page, including 'Patterson Roosevelt Lake Addition' and 'A. C. Rogers Company's'.

Assessment Roll and Tax List of Real Property in the Town of Crooked Lake

Cass County, Minnesota, for Taxes for the Year 1959.

Form 30 MILLER-DAVIS CO., MINNEAPOLIS * Indicate Type of Property: R-Residential, C-Commercial, I-Industrial, U-Utility, F-Farm, L-Lakeshore, T-Timber, M-Mineral

Table with columns: IN WHOSE NAME ASSESSED, TO WHOM TRANSFERRED, SUBDIVISION, DESCRIPTION OF PROPERTY, TRUE AND FULL VALUATIONS, ASSESSED VALUATIONS, VALUATIONS BY SCHOOL DISTRICTS AS EQUALIZED BY DEPARTMENT OF TAXATION, SOLD FOR TAXES, PAID, WHEN PAID, Number of Receipt, March Settlement 1960, June Settlement 1960, November Settlement 1960, Collections to First Monday in January 1961, Delinquent on First Monday in January 1961, Total Delinquent Tax and Penalty, REMARKS.

Vertical text on the left edge: For's Plat of Lake... hurn Oaklo... at... Milledale No... A. G. Bogen Company's Shores... Roosevelt Lake Addition... Washburn Lake... Lake Washburn... Pines A Pleny on... Lake Washburn... Milledale No... Luschner's Bay... Washburn Lake... Milledale No...

Vertical text on the right edge: Patterson Lake Shore... Re O'Brien's Plat... Part of Office "A" of... Plat on... Lawrence Lakes... Key Hollow Add'n...

Assessment Roll and Tax List of Real Property in the Town of Carroked Lake

Cass County, Minnesota, for Taxes for the Year 1959.

Form 30 MILLER-DAVIS CO., MINNEAPOLIS. Indicate Type of Property: R-Residential, C-Commercial, I-Industrial, U-Utility, F-Farm, L-Lakeshore, T-Timber, M-Mineral

Table with columns: IN WHOSE NAME ASSESSED, TO WHOM TRANSFERRED, SUBDIVISION, TRUE AND FULL VALUATIONS, ASSESSED VALUATIONS, VALUATIONS BY SCHOOL DISTRICTS AS EQUALIZED BY DEPARTMENT OF TAXATION, TAXES, PAID, WHEN PAID, etc.

Vertical text on the left edge of the page, including 'Wood Lake' and 'Patterson Lake Shore'.

Vertical text on the right edge of the page, including 'Patterson Lake Shore' and 'Rees Anchorage'.

Assessment Roll and Tax List of Real Property in the Town of Crooked Lake

Indicate Type of Property: R-Residential, C-Commercial, I-Industrial, U-Utility, F-Farm, L-Lakeshore, T-Timber, M-Mineral

Cass County, Minnesota, for Taxes for the Year 1959.

IN WHOSE NAME ASSESSED	TO WHOM TRANSFERRED	DESCRIPTION OF PROPERTY					TRUE AND FULL VALUATIONS										FINAL EQUALIZED VALUE			
		SUBDIVISION	Sec. or Lot	Town or Block	Rng.	Number of Acres of Land	LAND Exclusive of Structures and Improvements	BUILDINGS and Other Structures	MACHINERY Permanently Attached to Real Estate	TOTAL True and Full Value	RURAL			ALL OTHER				MACHINERY Permanently Attached to Real Estate	TOTAL ASSESSED VALUE	Total Assessed Value as Equalized by the Board of Review
											Homestead Up to \$4,000 20%	Over \$4,000 and Non-Homestead 33 1/3%	Timber Land Class 3e 20%	Homestead Up to \$4,000 25%	Over \$4,000 and Non-Homestead 40%	33 1/3%				
Marion E. & June Chumley	Part of Lot 1 & 2	First Addition to Roosevelt Shores	34	139	26															
"	"	"	34	140	26															
"	"	"	34	141	26															
Lemont A. Williams, Donald L. & Anna M. Anderson	"	"	34	142	26															
"	"	"	34	143	26															
"	"	"	34	144	26															
"	"	"	34	145	26															
"	"	"	34	146	26															
"	"	"	34	147	26															
"	"	"	34	148	26															
Dr. Raymond Champion, Jr.	"	"	34	149	26															
Lemont Williams, Donald L. & Anna M. Anderson	"	"	34	150	26															
Bernard L. & Mary L. Ekre	"	"	34	151	26															
Lemont A. Williams, Donald L. & Anna M. Anderson	"	"	34	152	26															
A. & Wilma L. Mecklenburg	"	"	34	153	26															
"	"	"	34	154	26															
"	"	"	34	155	26															
"	"	"	34	156	26															
Robert E. & Donna L. Mecklenburg	"	"	34	157	26															
"	"	"	34	158	26															
"	"	"	34	159	26															
John R. & Betty M. Brodie	"	"	34	160	26															

SOLD FOR TAXES	VALUATIONS BY SCHOOL DISTRICTS AS EQUALIZED BY DEPARTMENT OF TAXATION						Tax including State Homestead	State Tax on Non-Homestead	SPECIAL TAXES	TOTAL TAXES	PAID	WHEN PAID	Number of Receipt	March Settlement 1960	June Settlement 1960	Penalty	November Settlement 1960	Penalty	Collections to First Monday in January 1961	Penalty	Delinquent on First Monday in January 1961	Total Delinquent Tax and Penalty	REMARKS
	District No.	District No.	District No.	District No.	District No.	District No.																	
	Rate	Rate	Rate	Rate	Rate	Rate																	
1							424	10		434	1 PAID IN FULL	MAY 20 1960											
2							424	10		434	2 PAID IN FULL	MAY 20 1960											14368
3							424	10		434	3 PAID IN FULL	MAY 20 1960											
4							424	10		434	4 2nd Half Paid	OCT 31 1960											
5							424	10		434	5 1st Half Paid	MAY 31 1960											6535
6							424	10		434	6 2nd Half Paid	OCT 31 1960											
7							424	10		434	7 1st Half Paid	MAY 31 1960											
8							424	10		434	8 2nd Half Paid	OCT 31 1960											
9							424	10		434	9 1st Half Paid	MAY 31 1960											
10							424	10		434	10 PAID IN FULL	MAY 18 1960	8705										6535
11							424	10		434	11 PAID IN FULL	MAY 31 1960	9290										6535
12							424	10		434	12 PAID IN FULL	APR 20 1960	5924										6535
13							424	10		434	13 2nd Half Paid	OCT 31 1960	15395										6535
14							2198	52		2250	14 PAID IN FULL	MAY 31 1960	9288										6535
15							424	10		434	15 PAID IN FULL	MAY 31 1960	9290										6535
16							424	10		434	16 PAID IN FULL	MAY 18 1960											6535
17							424	10		434	17 PAID IN FULL	MAY 18 1960											6535
18							424	10		434	18 PAID IN FULL	MAY 12 1960											6535
19							424	10		434	19 PAID IN FULL	MAY 12 1960											6535
20							424	10		434	20 PAID IN FULL	MAY 24 1960	12156										6535
							387			10254			242										

For Plat of Lake
 Wash Jugcher's Bay in Bay Pines
 Smokey Hollow Add'n
 1st Addition to Roosevelt Shores
 Rees Anchorage
 Patterson's Lake Shore

Sabins' Pasture Add'n
 Patterson's

Assessment Roll and Tax List of Real Property in the Town of Crooked Lake

Cass County, Minnesota, for Taxes for the Year 1959.

Indicate Type of Property: R-Residential, C-Commercial, I-Industrial, U-Utility, F-Farm, L-Lakeshore, T-Timber, M-Mineral

Table with columns: IN WHOSE NAME ASSESSED, TO WHOM TRANSFERRED, SUBDIVISION, DESCRIPTION OF PROPERTY, TRUE AND FULL VALUATIONS, ASSESSED VALUATIONS, VALUATIONS BY SCHOOL DISTRICTS AS EQUALIZED BY DEPARTMENT OF TAXATION, TAXES, PAID, WHEN PAID, Number of Receipt, March Settlement, June Settlement, Penalty, November Settlement, Penalty, Collections to First Monday in January 1961, Delinquent on First Monday in January 1961, Total Delinquent Tax and Penalty, REMARKS.

Vertical text on the left margin: Wash, Teacher's Bay, Sabin's Eastburn Add'n, Rees Anchorage, Patterson's Lake Shore.

Vertical text on the right margin: Personal

