

Assessment & Tax List - 1958
Crooked Lake

SUMMARY OF TAX COLLECTION

Original Levy	- - - - -	\$ 16,673.82	
Additions	- - - - -	\$ 69.96	
			\$ 16,743.78
Abatements	- - - - -	\$ 114.68	
			\$ 16,629.10

COLLECTIONS

March Settlement	- - - - -	\$ 1,950.46	
June Settlement	- - - - -	\$ 10,839.37	
November Settlement	- - - - -	\$ 2,569.83	
January Settlement	- - - - -	\$ 56.96	\$ 15,416.62
			\$
Over Collected	- - - - -	\$ 6.30	
Under Collected	- - - - -	\$	
Delinquent	- - - - -	\$ 12,187.8	\$ 1212.48
Total	- - - - -		\$ 16,629.10

Real Estate

THE MARCO'S Auditor's Plat of Lake Washburn Outlets

Ringdale Bros. & Co. Heights ROOSEVELT TRAILS

TABULAR SCHEDULE OF VALUATIONS,

LEVIED IN THE Town OF Crooked Lake

RATES AND TAXES

COUNTY OF CASS, STATE OF MINNESOTA

School District No.	VALUATION BY SCHOOL DISTRICTS				RATE OF STATE TAXES	RATE OF COUNTY TAXES										RATE OF TOWN TAXES										RATE OF SCHOOL TAXES																															
	Agricultural Lands	Non-Agricultural Lands	Personal Property	Total Value of all Property except Money and Credits		Rev.	R. & B.	Welfare	Bonds and Int.	Rd & B. Fed. Proj.	PERA	Total Rate of County Tax	Rev.	R. & B.	Drag Tax	State Loan	Nire	Total Rate of Town Tax	Local	Special	State Loan	Deficiency	Tuition	Transportation	PERA																																
118	798	63,563	9135	71,438	5.90	29.54	15.51	68	5.	3.45	109.17	35	14.7	1.	2.1	21.3	1.20	26.44	1.45	9.77	3.37	1.50	26.44	1.45	9.77	3.37	67.03	203.4	93	2332	2467	135	911	314	6252	648856	State - Non-Homestead, 38104	State - Homestead, 42135	County Revenue, 211018	County Road and Bridge, 107157	County Welfare, 369184	Bonds and Interest PERA, 24646	Co. Nurse, 14288	R & B Fed. Proj., 35719	Town Revenue, 25003	Town Road and Bridge, 105014	Town Drag, 7144	Town State Loan, Nire, 15002	152163	School Local 1 Mill, 7143	School Special, 354857	School State Loan, 188882	Deficiency, 10358	Tuition, 69794	Transportation, 24074	PERA, 655108	1467382

Assessed Value	Rural	All Other	Personal Property	Total
Homestead	13,016			13,016
Non-Homestead	51,345		7077	58,422
Total	64,361		7077	71,438

LOCAL 1 MILL AND SPECIAL SCHOOL TAXES BY DISTRICTS										ALL OTHER TAXES				
Local 1 Mill	Special	State Loan	Def.	Tuition	Transportation	PERA	Total School Taxes	FUNDS	Rate	Amounts				
67.03	203.4	93	2332	2467	135	911	314	6252		648856				
92.03	228.4	7050	352525	186415	10223	68883	23760	7143	354857	188882	10358	69794	24074	655108

County: R & B. Bldg. 14288
 Agric. Asst. 3572
 779872

Total Number of Acres 7352.40
 State of Minnesota, } ss.
 COUNTY OF CASS }
 I, L. C. Peterson, Auditor of said County and State aforesaid, do hereby certify that the foregoing is a true and correct Schedule, showing the valuation of all the taxable property, in the Town of Crooked Lake, in said County, the several rates of Taxation and Totals of the several Tax Funds levied thereon for the year A. D. 1958.

Witness my hand and official seal, this 7th day of January, A. D. 1959.
L. C. Peterson, County Auditor.
By Helen Bellon, Deputy.

SEAL

Total Taxes Real Estate 15,014.92
 Pers. Prop. 1,658.90
 Total 16,673.82

Real Estate
 THE HARRIS
 Auditor's Plat of Lake
 Washburn Outlets
 The Edna Bros. & Co. Heights
 Rosevelt Trails
 ROOSEVELT 500

COLLECTIONS OF TAXES OF 1958

Town OF Crooked Lake, CASS COUNTY, MINNESOTA

FUNDS	MARCH SETTLEMENT 1958	JUNE SETTLEMENT 1958	NOV. SETTLEMENT 1958	Amount Collected from Nov. 1957 to First Monday in Jan. 1958	REDUCTIONS	Total Reductions and Collected	BALANCE UNCOLLECTED	ADDITIONS	Total Uncollected to First Monday in January, 1958
State-Non-Homestead,	5252	25119	4984	157					
State-Homestead,	4911	27398	6520	161					
County Revenue,	24591	137178	32644	804					
County Road and Bridge,	12487	69657	16576	408					
County Welfare,	43020	239992	57110	1407					
County Bond and Interest,									
R. & B. Bldg. Proj.	4162	23219	5525	136					
Co. Nurse	1665	9287	2210	55					
R. & B. Bldg.	1665	9287	2210	55					
Town Revenue,	2914	16253	3868	95					
Town Road and Bridge,	12237	68264	16245	400					
Town Drag,	832	4644	1105	27					
Town State Loan,									
Fire	1748	9752	2321	58					
School Local 1 Mill,	833	4644	1105	27					
School Special,	41285	230365	54854	681					
School State Loan,									
Deficiency	22010	122782	29218	720					
Tuition									
Transportation	1207	6733	1602	39					
C. O.	8133	45370	10796	266					
PERA	2806	15650	3726	92					
PERA	2872	16021	3812	94					
Agn. Assn	416	2322	552	14					
	195046	1083937	256983	5696					

	School District No.	LOCAL 1 MILL	SPECIAL	STATE LOAN	Deficiency	Transp.	C. O.	PERA	TOTALS
MARCH SETTLEMENT	118a	14	338		357	20	132	45	906
	1187a	819	40947		21653	1187	8001	2761	75368
	Totals	833	41285		22010	1207	8133	2806	76274
JUNE SETTLEMENT	118a	73	1825		1930	106	713	246	4893
	1187a	4571	228540		120852	6627	44657	15404	420651
	Totals	4644	230365		122782	6733	45370	15650	425544
NOVEMBER SETTLEMENT	118a	16	400		423	23	156	55	1073
	1187a	1059	54454		28795	1579	10640	3671	100228
	Totals	1105	54854		29218	1602	10796	3726	101301
NOVEMBER to JANUARY	1187a	27	681		720	39	266	92	1825
	Totals	27	681		720	39	266	92	1825
	School District No.								
ADDITIONS									
	Totals								
	School District No.								
REDUCTIONS									
	Totals								
	School District No.								

Real Estate

THE VALERIO'S
Auditor's Part of Lake
Washington Outlets

Ringdale Bros. & Co.
Roosevelt Trails
ROOSEVELT 500

Assessment Roll and Tax List of Real Property in the Town of Crooked Lake, Cass County, Minnesota, for Taxes for the Year 1958.

Cass County, Minnesota, for Taxes for the Year 1958.

Table with columns: IN WHOSE NAME ASSESSED, TO WHOM TRANSFERRED, DESCRIPTION OF PROPERTY, TRUE AND FULL VALUATIONS, ASSESSED VALUATIONS, VALUATIONS BY SCHOOL DISTRICTS AS EQUALIZED BY DEPARTMENT OF TAXATION, SOLD FOR TAXES, PAID, WHEN PAID, Number of Receipt, March Settlement 1959, June Settlement 1959, November Settlement 1959, Collections to First Monday in January 1960, Delinquent on First Monday in January 1960, Total Delinquent Tax and Penalty, REMARKS.

Auditor's Plat of Lake Washburn Outlots
Tingdale Bros. Lake Heights Incorporated
Roosevelt Trails

Assessment Roll and Tax List of Real Property in the Town of Crooked Lake

Indicate Type of Property: R-Residential, C-Commercial, I-Industrial, U-Utility, F-Farm, L-Lakeshore, T-Timber, M-Mineral

Cass County, Minnesota, for Taxes for the Year 1958.

Main table with columns: IN WHOSE NAME ASSESSED, TO WHOM TRANSFERRED, DESCRIPTION OF PROPERTY, TRUE AND FULL VALUATIONS, ASSESSED VALUATIONS, VALUATIONS BY SCHOOL DISTRICTS AS EQUALIZED BY DEPARTMENT OF TAXATION, SOLD FOR TAXES, SPECIAL TAXES, TOTAL TAXES, PAID, WHEN PAID, Number of Receipt, March Settlement 1959, June Settlement 1959, November Settlement 1959, Collections to First Monday in January 1960, Delinquent on First Monday in January 1960, Total Delinquent Tax and Penalty, REMARKS.

Vertical text on the right edge of the page.

Auditor's Plat of Lake Washburn Outlots

Ingvald Bros. Lake Heights Roseville Trails

Assessment Roll and Tax List of Real Property in the Town of Crooked Lake

Indicate Type of Property: R-Residential, C-Commercial, I-Industrial, U-Utility, F-Farm, L-Lakeshore, T-Timber, M-Mineral

Cass County, Minnesota, for Taxes for the Year 1958.

Table with columns: IN WHOSE NAME ASSESSED, TO WHOM TRANSFERRED, DESCRIPTION OF PROPERTY, TRUE AND FULL VALUATIONS, ASSESSED VALUATIONS, VALUATIONS BY SCHOOL DISTRICTS AS EQUALIZED BY DEPARTMENT OF TAXATION, SOLD FOR TAXES, SPECIAL TAXES, TOTAL TAXES, PAID, WHEN PAID, Number of Receipt, March Settlement 1959, June Settlement 1959, Penalty Settlement 1959, Collections to First Monday in January 1960, Delinquent on First Monday in January 1960, Total Delinquent Tax and Penalty, REMARKS.

Auditor's Plat of Lake Washburn Outlots
Tingdale Bros. Lake Heights BOONVILLE 500
Roosevelt Trails

Assessment Roll and Tax List of Real Property in the Town of Crooked Lake

Indicate Type of Property: R-Residential, C-Commercial, I-Industrial, U-Utility, F-Farm, L-Lakeshore, T-Timber, M-Mineral

Cass County, Minnesota, for Taxes for the Year 1958.

Table with columns: IN WHOSE NAME ASSESSED, TO WHOM TRANSFERRED, DESCRIPTION OF PROPERTY, TRUE AND FULL VALUATIONS, ASSESSED VALUATIONS, VALUATIONS BY SCHOOL DISTRICTS AS EQUALIZED BY DEPARTMENT OF TAXATION, SOLD FOR TAXES, SPECIAL TAXES, TOTAL TAXES, PAID, WHEN PAID, Number of Receipt, March Settlement 1959, June Settlement 1959, November Settlement 1959, Collections to First Monday in January 1960, Delinquent on First Monday in January 1960, Total Delinquent Tax and Penalty, REMARKS.

(Continued on next page)

Auditor's Plat of Lake Washburn Outlets, Inglede Bros. aka Heights Rossville 800, Roseville Trails

Assessment Roll and Tax List of Real Property in the Town of Crooked Lake, Minnesota

Indicate Type of Property: R-Residential, C-Commercial, I-Industrial, U-Utility, F-Farm, L-Lakeshore, T-Timber, M-Mineral

Cass County, Minnesota, for Taxes for the Year 1958.

Main table with columns: IN WHOSE NAME ASSESSED, TO WHOM TRANSFERRED, DESCRIPTION OF PROPERTY, TRUE AND FULL VALUATIONS, ASSESSED VALUATIONS, VALUATIONS BY SCHOOL DISTRICTS AS EQUALIZED BY DEPARTMENT OF TAXATION, SOLD FOR TAXES, PAID, WHEN PAID, etc.

Auditor's Plat of Lake Washburn Outlots, Ringdale Bros. aka Heights BOONVILLE 500, Roosevelt Trails

Assessment Roll and Tax List of Real Property in the *Town* of *Crooked Lake*,
* Indicate Type of Property: R-Residential, C-Commercial, I-Industrial, U-Utility, F-Farm, L-Lakeshore, T-Timber, M-Mineral

Form SCD BILLING-BATH COMPANY, MINNEAPOLIS

Table with columns: IN WHOSE NAME ASSESSED, TO WHOM TRANSFERRED, DESCRIPTION OF PROPERTY, TRUE AND FULL VALUATIONS, ASSESSED VALUATIONS, FINAL EQUALIZED VALUE. Includes handwritten entries for Gilbert R. & Lois b. Labin and Donald J. Carlsson & Elaine M. Carlsson.

Cass County, Minnesota, for Taxes for the Year 1958.

Table with columns: VALUATIONS BY SCHOOL DISTRICTS AS EQUALIZED BY DEPARTMENT OF TAXATION, TAXES, PAID, WHEN PAID, Number of Receipt, March Settlement 1959, June Settlement 1959, November Settlement 1959, Collections to First Monday in January 1960, Delinquent on First Monday in January 1960, Total Delinquent Tax and Penalty, REMARKS. Includes handwritten notes like 'HALF PAID MAY 13 1959'.

Auditor's Plat of Lake Washburn Outlets
Tingdale Bros. aka Helgerts
ROOSEVELT TRAILS
500

Assessment Roll and Tax List of Real Property in the Town of Crooked Lake

Cass County, Minnesota, for Taxes for the Year 1958.

Form 301 (REV. 5-15-57) MINN. STAT. CHAP. 260.01, SUBS. 1-4. Indicate Type of Property: R-Residential, C-Commercial, I-Industrial, U-Utility, F-Farm, L-Lakeshore, T-Timber, M-Mineral

Main table with columns: IN WHOSE NAME ASSESSED, TO WHOM TRANSFERRED, DESCRIPTION OF PROPERTY, TRUE AND FULL VALUATIONS, ASSESSED VALUATIONS, VALUATIONS BY SCHOOL DISTRICTS AS EQUALIZED BY DEPARTMENT OF TAXATION, SOLD FOR TAXES, SPECIAL TAXES, TOTAL TAXES, PAID, WHEN PAID, etc.

Auditor's Plat of Lake Washburn Outlots... Tangle Lake Bros. etc. Redgate Trails

Assessment Roll and Tax List of Real Property in the Town of Crooked Lake

Form 300

Indicate Type of Property: R-Residential, C-Commercial, I-Industrial, U-Utility, F-Farm, L-Lakeshore, T-Timber, M-Mineral

Cass County, Minnesota, for Taxes for the Year 1958.

Table with columns: IN WHOSE NAME ASSESSED, TO WHOM TRANSFERRED, DESCRIPTION OF PROPERTY, TRUE AND FULL VALUATIONS, ASSESSED VALUATIONS, VALUATIONS BY SCHOOL DISTRICTS AS EQUALIZED BY DEPARTMENT OF TAXATION, SOLD FOR TAXES, PAID, WHEN PAID, etc.

Auditor's Plat of Lake Washburn Outlots... Rosewalt Trails... Tingedale Bros. - ale Heights... ROOSEVELT 900

Assessment Roll and Tax List of Real Property in the Down of Crested Lake,
* Indicate Type of Property: R-Residential, C-Commercial, I-Industrial, U-Utility, F-Farm, L-Lakeshore, T-Timber, M-Mineral

Cass County, Minnesota, for Taxes for the Year 1958.

Table with columns: IN WHOSE NAME ASSESSED, TO WHOM TRANSFERRED, DESCRIPTION OF PROPERTY, TRUE AND FULL VALUATIONS, ASSESSED VALUATIONS, VALUATIONS BY SCHOOL DISTRICTS AS EQUALIZED BY DEPARTMENT OF TAXATION, SOLD FOR TAXES, PAID, WHEN PAID, etc.

Vertical text on the right margin: Auditor's Plat of Lake Washburn Outlots, Tingle Bros. are Heirs of ROOSEVELT TRAILS

Assessment Roll and Tax List of Real Property in the Town of Crooked Lake

Cass County, Minnesota, for Taxes for the Year 1958.

Form 5011 UNIFORM COUNTY, MINNESOTA. Indicate Type of Property: R-Residential, C-Commercial, I-Industrial, U-Utility, F-Farm, L-Lakeshore, T-Timber, M-Mineral

Main table with columns: IN WHOSE NAME ASSESSED, TO WHOM TRANSFERRED, DESCRIPTION OF PROPERTY, TRUE AND FULL VALUATIONS, ASSESSED VALUATIONS, VALUATIONS BY SCHOOL DISTRICTS AS EQUALIZED BY DEPARTMENT OF TAXATION, TAXES, PAID, WHEN PAID, Number of Receipt, March Settlement 1959, June Settlement 1959, November Settlement 1959, Collections to First Monday in January 1960, Delinquent on First Monday in January 1960, Total Delinquent Tax and Penalty, REMARKS.

[See #17 continued on next page]

Anditor's Plat of Lake Washburn Outlets, Tingle Bros. are Rejected, ROOSTVILLE 500

Assessment Roll and Tax List of Real Property in the Town of Crooked Lake

Indicate Type of Property: R-Residential, C-Commercial, I-Industrial, U-Utility, F-Farm, L-Lakeshore, T-Timber, M-Mineral

Cass County, Minnesota, for Taxes for the Year 1958.

Main assessment table with columns for description of property, true and full valuations, assessed valuations (rural, all other, machinery), total assessed value, and final equalized value.

Handwritten notes on the left side of the table listing names: Ben & Marie J. Antlam, Harry L. & Galla D. Martenson, Marvin Koolle, Fern & Norma A. Bohrer & Paul & Dorothy Bohrer, Melvin & Edna Mahler.

Taxation table with columns for school districts, taxes (state, special, total), paid status, when paid (month, day, year), and penalties for delinquent taxes.

Vertical text on the far right edge: TINGDAL'S PLAT OF LAKE WAISHUBEN OUTLOTS, ROOSEVELT TRAILS, TINGDAL BROS. Lake Heights ROOSEVELT TRAILS, ROOSEVELT 500.

Assessment Roll and Tax List of Real Property in the Town of Crooked Lake,

Indicate Type of Property: R-Residential, C-Commercial, I-Industrial, U-Utility, F-Farm, L-Lakeshore, T-Timber, M-Mineral

Cass County, Minnesota, for Taxes for the Year 1958.

IN WHOSE NAME ASSESSED	TO WHOM TRANSFERRED	DESCRIPTION OF PROPERTY					TRUE AND FULL VALUATIONS												FINAL EQUALIZED VALUE	
		SUBDIVISION	Sec. or Lot	Town or Block	Rng.	Number of Acres of Land Acres 100ths	LAND Exclusive of Structures and Improvements	BUILDINGS and Other Structures	MACHINERY Permanently Attached to Real Estate	TOTAL True and Full Value	RURAL			ALL OTHER			MACHINERY Permanently Attached to Real Estate	TOTAL ASSESSED VALUE		Total Assessed Value as Equalized by the Board of Review
											Homestead Up to \$4,000 20%	Over \$4,000 and Non-Homestead 33 1/3%	Timber Land Class 3e 20%	Homestead Up to \$4,000 25%	Over \$4,000 and Non-Homestead 40%	MACHINERY Permanently Attached to Real Estate 33 1/3%				
<i>Francis H. Sampson</i>	State of Minnesota	1							180					60			60	180	180	Forfeited
<i>Frank L. Sampson</i>	State of Minnesota	2							180	131			312	104			104	312	312	Forfeited
State of Minnesota		3																		
State of Minnesota		4							180				180	60			60	180	180	
<i>Clifford L. Pearlman</i>		5																		
State of Minnesota		6																		
State of Minnesota		7																		
State of Minnesota		8																		
State of Minnesota		9																		
State of Minnesota		10																		
State of Minnesota		11																		
State of Minnesota		12																		
State of Minnesota		13																		
<i>Moneta Improvement Co.</i>		14							240				240	80			80	240	240	
State of Minnesota		15																		
<i>Moneta Improvement Co.</i>		16							270				270	90			90	270	270	
State of Minnesota		17							270				270	90			90	270	270	
State of Minnesota		18																		
State of Minnesota		19																		
State of Minnesota		20																		
									240				1321	131		1452		484	484	

SOLD FOR TAXES	VALUATIONS BY SCHOOL DISTRICTS AS EQUALIZED BY DEPARTMENT OF TAXATION						Tax including State Homestead	State Tax on Non-Homestead 6.52 Mills	SPECIAL TAXES	TOTAL TAXES	PAID	WHEN PAID	Number of Receipt	March Settlement 1959	June Settlement 1959	November Settlement 1959	Penalty	Collections to First Monday in January 1960	Penalty	Delinquent on First Monday in January 1960	Total Delinquent Tax and Penalty	REMARKS
	District No.	District No.	District No.	District No.	District No.	District No.																
	Rate	Rate	Rate	Rate	Rate	Rate																
1																						
2																						Forfeited 10-5-59
3																						Forfeited 10-5-59
4																						PAID IN FULL MAY 19 1959 9009
5																						
6																						
7																						
8																						
9																						
10																						
11																						
12																						
13																						
14																						2nd HALF PAID NOV 2 1959 14382
15																						1st HALF PAID MAY 29 1959 14665
16																						2nd HALF PAID NOV 2 1959 14382
17																						1st HALF PAID MAY 29 1959 14665
18																						2nd HALF PAID NOV 2 1959 14382
19																						1st HALF PAID MAY 29 1959 14665
20																						
									484													11056 316 11372

Auditor's Plat of Lake Washburn Outlets
Tingdale Bros. aka Heights ROOSEVELT TRAILS

Assessment Roll and Tax List of Real Property in the Town of Spooner of Spooner Lake

* Indicate Type of Property: R-Residential, C-Commercial, I-Industrial, U-Utility, F-Farm, L-Lakeshore, T-Timber, M-Mineral

Cass County, Minnesota, for Taxes for the Year 1958.

Table with columns: IN WHOSE NAME ASSESSED, TO WHOM TRANSFERRED, DESCRIPTION OF PROPERTY, TRUE AND FULL VALUATIONS, ASSESSED VALUATIONS, VALUATIONS BY SCHOOL DISTRICTS AS EQUALIZED BY DEPARTMENT OF TAXATION, SOLD FOR TAXES, PAID, WHEN PAID, March Settlement, June Settlement, November Settlement, Collections to First Monday in January 1960, Delinquent on First Monday in January 1960, Total Delinquent Tax and Penalty, REMARKS.

Sec. 20, continued on next page

Vertical text on the right edge: Auditor's Plat of Lake Washburn Outlets, Spooner Lake, Tingle Bros., aka Heights, ROOSEVELT TRAILS

Assessment Roll and Tax List of Real Property in the Down of Carrooked Lake

* Indicate Type of Property: R-Residential, C-Commercial, I-Industrial, U-Utility, F-Farm, L-Lakeshore, T-Timber, M-Mineral

Form 500 (1955) - S.I.V. PROPERTY, MINNAPOLIS

IN WHOSE NAME ASSESSED	TO WHOM TRANSFERRED	DESCRIPTION OF PROPERTY					TRUE AND FULL VALUATIONS															FINAL EQUALIZED VALUE					
		SUBDIVISION	Sec. or Lot	Town or Block	Rng.	Number of Acres of Land	RURAL				ALL OTHER				MACHINERY Permanently Attached to Real Estate	TOTAL ASSESSED VALUE	Total Assessed Value as Equalized by the Board of Review										
							Acres	100ths	Homestead Up to \$4,000	Over \$4,000 and Non-Homestead	Timber Land Class 3e 20%	Homestead Up to \$4,000	Over \$4,000 and Non-Homestead														
		Dollars	Dollars	Dollars	Dollars	Dollars	Dollars	Dollars	Dollars	Dollars	Dollars																
State of Minnesota						21	139	26																			
Moneta Improvement Co.									40				240								80			240		80	
State of Minnesota																											
State of Minnesota																											
State of Minnesota																											
State of Minnesota																											
Moneta Improvement Co.									40				201								67			201		67	
State of Minnesota																											
State of Minnesota																											
Leon Kijple									40				201								67			201		67	
State of Minnesota																											
Fuller, Nelson & Olson																											
Moneta Improvement Co.													135								45			135		45	
" " "													201								67			201		67	
" " "													201								67			201		67	
State of Minnesota																											
State of Minnesota																											
						227							1179								393			1179		393	

Cass County, Minnesota, for Taxes for the Year 1958.

SOLD FOR TAXES	VALUATIONS BY SCHOOL DISTRICTS AS EQUALIZED BY DEPARTMENT OF TAXATION						Tax including State Homestead	State Tax on Non-Homestead	SPECIAL TAXES	TOTAL TAXES	PAID	WHEN PAID	Number of Receipt	March Settlement 1959	June Settlement 1959	Penalty	November Settlement 1959	Penalty	Collections to First Monday in January 1960	Penalty	Delinquent on First Monday in January 1960	Total Delinquent Tax and Penalty	REMARKS				
	District No.	District No.	District No. 112	District No.	District No.	District No.																					
	Rate	Rate	Rate	Rate	Rate	Rate																					
	Mills	Mills	Mills	Mills	Mills	Mills																					
1																											
2			80				18.78	52	1880														14383	9.40	9.40	12748	
3																											
4																											
5																											
6																											
7			67				15.30	44	1574														14383	7.87	7.87	12748	
8																											
9																											
10																											
11																											
12	SOLD FOR TAXES		67				15.30	44	1574																	1574	
13																											
14																											
15			45				10.28	30	1058																		
16			67				15.30	44	1574														14383	7.87	7.87	12748	
17			67				15.30	44	1574														14383	7.87	7.87	12748	
18																											
19																											
20																											
			393				89.76	258	9234															4359	3301	1574	

Anderton's Plat of Lake Washburn Outlots
 Township 41 North
 Range 12 West
 Tingsdile Bros. Lake Heights BOONVILLE 500
 Roosevelt Trails

Assessment Roll and Tax List of Real Property in the Town of Brook Lake

* Indicate Type of Property: R-Residential, C-Commercial, I-Industrial, U-Utility, F-Farm, L-Lakeshore, T-Timber, M-Mineral

Cass County, Minnesota, for Taxes for the Year 1958.

IN WHOSE NAME ASSESSED	TO WHOM TRANSFERRED	DESCRIPTION OF PROPERTY							TRUE AND FULL VALUATIONS							FINAL EQUALIZED VALUE	SOLD FOR TAXES	VALUATIONS BY SCHOOL DISTRICTS AS EQUALIZED BY DEPARTMENT OF TAXATION								PAID	WHEN PAID	Number of Receipt	March Settlement 1959	June Settlement 1959	Penalty	November Settlement 1959	Penalty	Collections to First Monday in January 1960	Penalty	Delinquent on First Monday in January 1960	Total Delinquent Tax and Penalty	REMARKS				
		SUBDIVISION	Sec. or Lot	Town or Block	Rng.	Number of Acres of Land	Machinery Permanently Attached to Real Estate	TOTAL True and Full Value	RURAL		ALL OTHER							TOTAL ASSESSED VALUE	Total Assessed Value as Equalized by the Board of Review	District No.	District Rate	District No.	District Rate	District No.	District Rate														Tax including State Homestead	State Tax on Non-Homestead	SPECIAL TAXES	TOTAL TAXES
									LAND Exclusive of Structures and Improvements	BUILDINGS and Other Structures	Homestead Up to \$4,000 20%	Over \$4,000 and Non-Homestead 33 1/3%	Timber Land Class 3e 20%	Homestead Up to \$4,000 25%	Over \$4,000 and Non-Homestead 40%																											
		Acres	100ths	No. School District	Indicate Homestead Yes or No	Indicate Agricultural Yes or No	Indicate Type of Property	Dollars	Dollars	Dollars	Dollars	Dollars	Dollars	Dollars	Dollars			Dollars	Dollars	Dollars	Dollars	Dollars	Dollars	Dollars	Dollars														Dollars	Dollars	Dollars	Dollars
State of Minnesota		1	NE 1/4 of NE 1/4	less hwy	22	139	26																																			
State of Minnesota		2	NW 1/4 of NE 1/4																																							
State of Minnesota		3	SW 1/4 of NE 1/4																																							
Norman Charlotte Nygren		4	SE 1/4 of NE 1/4	less hwy	40					201			67		67																						7826					
State of Minnesota		6	NE 1/4 of NW 1/4																																							
State of Minnesota		7	NW 1/4 of NW 1/4																																							
State of Minnesota		8	SW 1/4 of NW 1/4																																							
State of Minnesota		9	SE 1/4 of NW 1/4																																							
State of Minnesota		11	NE 1/4 of SW 1/4																																							
State of Minnesota		12	NW 1/4 of SW 1/4																																							
State of Minnesota		13	SW 1/4 of SW 1/4																																							
State of Minnesota		14	SE 1/4 of SW 1/4																																							
Leonard P. Peterson		16	NE 1/4 of SE 1/4	less hwy	40					201			67		67																											
" "		17	NW 1/4 of SE 1/4		40					201			67		67																											
" "		18	SW 1/4 of SE 1/4		40					201			67		67																											
State of Minnesota		19	SE 1/4 of SE 1/4	less hwy																																						
		20			160					804			268		268																											

Auditor's Plat of Lake Broome and Tingle Bros. Lake Heights Roosevelt Trails Washburn Outlots

Assessment Roll and Tax List of Real Property in the _____ of _____

* Indicate Type of Property: R-Residential, C-Commercial, I-Industrial, U-Utility, F-Farm, L-Lakeshore, T-Timber, M-Mineral

Form 3CD

Cass County, Minnesota, for Taxes for the Year 1958.

Table with columns: IN WHOSE NAME ASSESSED, TO WHOM TRANSFERRED, DESCRIPTION OF PROPERTY (Subdivision, Acres, etc.), TRUE AND FULL VALUATIONS (Land, Buildings, Machinery), ASSESSED VALUATIONS (Rural, All Other), and FINAL EQUALIZED VALUE.

Table with columns: SOLD FOR TAXES, VALUATIONS BY SCHOOL DISTRICTS AS EQUALIZED BY DEPARTMENT OF TAXATION (District No., Rate, etc.), SPECIAL TAXES, TOTAL TAXES, PAID, WHEN PAID, Number of Receipt, March Settlement 1959, June Settlement 1959, November Settlement 1959, Penalty, Collections to First Monday in January 1960, Delinquent on First Monday in January 1960, Total Delinquent Tax and Penalty, REMARKS.

Auditor's Plat of Lake Washburn Outlots
Tingdelle Bros. Lake Heights ROOSEVELT TRAILS

Assessment Roll and Tax List of Real Property in the Town of Crooked Lake

* Indicate Type of Property: R-Residential, C-Commercial, I-Industrial, U-Utility, F-Farm, L-Lakeshore, T-Timber, M-Mineral

Form 507 (REVISED 1957) MINNESOTA

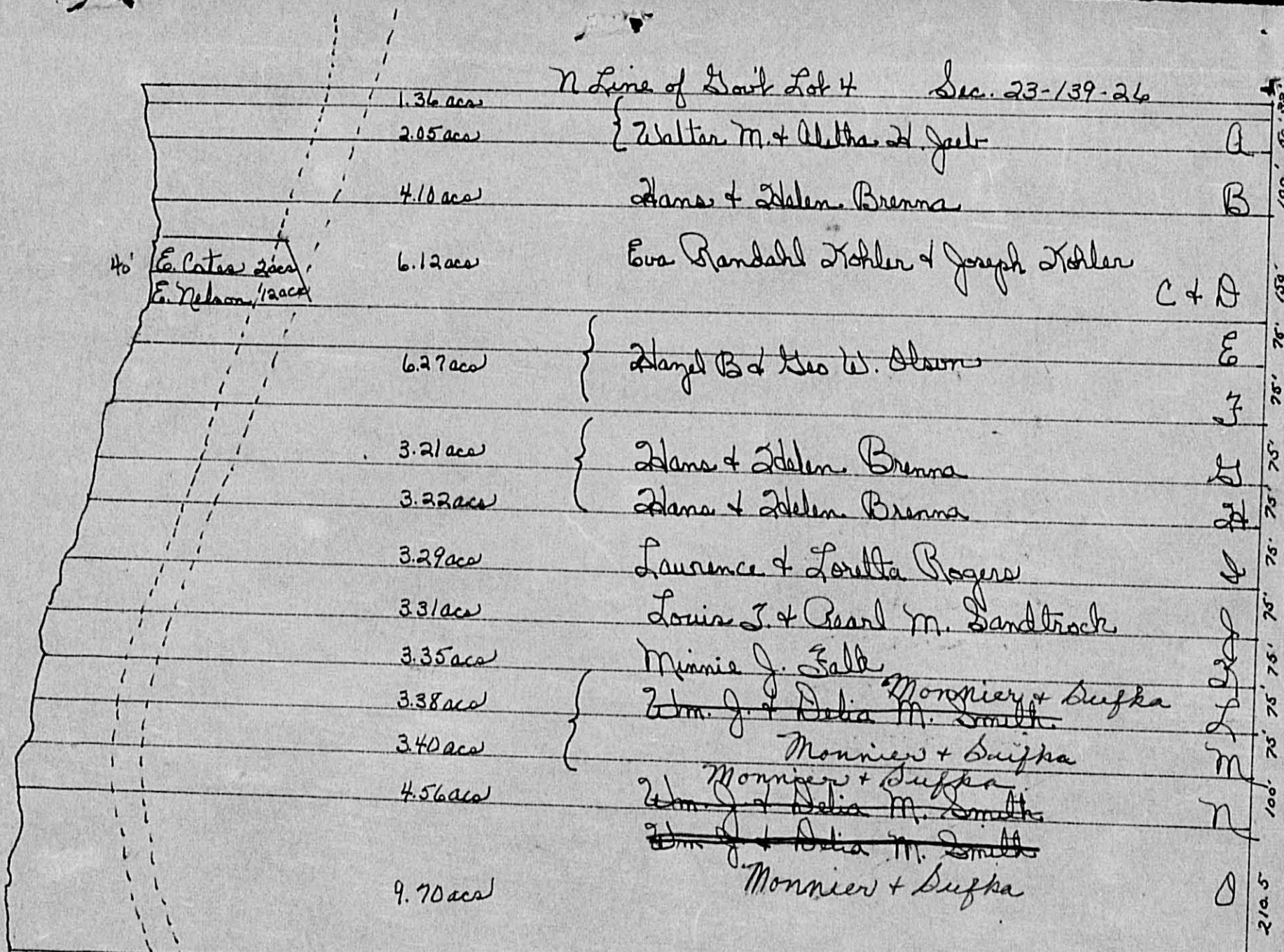
Table with columns: IN WHOSE NAME ASSESSED, TO WHOM TRANSFERRED, DESCRIPTION OF PROPERTY, TRUE AND FULL VALUATIONS, ASSESSED VALUATIONS, FINAL EQUALIZED VALUE.

Cass County, Minnesota, for Taxes for the Year 1958.

Table with columns: SOLD FOR TAXES, VALUATIONS BY SCHOOL DISTRICTS AS EQUALIZED BY DEPARTMENT OF TAXATION, Tax including State Homestead, SPECIAL TAXES, TOTAL TAXES, PAID, WHEN PAID, Number of Receipt, March Settlement 1959, June Settlement 1959, Penalty, November Settlement 1959, Penalty, Collections to First Monday in January 1960, Penalty, Delinquent on First Monday in January 1960, Total Delinquent Tax and Penalty, REMARKS.

Auditor's Plat of Lake Washburn Outlets, Tingsdale Bros., Lake Heights, Roseville Trails, Roseville 500

N Line of East Lot 4 Sec. 23-139-26



S. Line of East Lot 4

Assessment Roll and Tax List of Real Property in the Town of Brookside Lake, of Brookside Lake

* Indicate Type of Property: R-Residential, C-Commercial, I-Industrial, U-Utility, F-Farm, L-Lakeshore, T-Timber, M-Mineral

Cass County, Minnesota, for Taxes for the Year 1958.

Table with columns for IN WHOSE NAME ASSESSED, TO WHOM TRANSFERRED, DESCRIPTION OF PROPERTY, TRUE AND FULL VALUATIONS, ASSESSED VALUATIONS, VALUATIONS BY SCHOOL DISTRICTS AS EQUALIZED BY DEPARTMENT OF TAXATION, TAXES, PAID, WHEN PAID, Number of Receipt, March Settlement 1959, June Settlement 1959, Penalty, November Settlement 1959, Penalty, Collections to First Monday in January 1960, Penalty, Delinquent on First Monday in January 1960, Total Delinquent Tax and Penalty, REMARKS.

State of Minnesota
2km. D. & Pearl L. Stiles
Julien J. & Odelle Corinne Leiber
Raymond & Emma Adams
Emma Guyett Hughes & Alice H. Hughes
Floyd & Stella M. Simmons
Wynona & Monica Winkler
George & Mabel Williams

Andtor's Plat of Lake Washburn Outlots
Tingdale Bros. Roosevelt Trails
Late Heights ROOSEVELT 300

Assessment Roll and Tax List of Real Property in the Town of Brookfield, of Washington County, Minnesota

Indicate Type of Property: R-Residential, C-Commercial, I-Industrial, U-Utility, F-Farm, L-Lakeshore, T-Timber, M-Mineral

Cass County, Minnesota, for Taxes for the Year 1958.

Table with columns: IN WHOSE NAME ASSESSED, TO WHOM TRANSFERRED, DESCRIPTION OF PROPERTY, TRUE AND FULL VALUATIONS, ASSESSED VALUATIONS, VALUATIONS BY SCHOOL DISTRICTS AS EQUALIZED BY DEPARTMENT OF TAXATION, TAXES, PAID, WHEN PAID, Number of Receipt, March Settlement 1959, June Settlement 1959, Penalty, November Settlement 1959, Penalty, Collections to First Monday in January 1960, Penalty, Delinquent on First Monday in January 1960, Total Delinquent Tax and Penalty, REMARKS.

[See 27, continued, next page]

Vertical text on the right edge: Auditor's Plat of Lake Washburn Outlots, Tinglelake Bros. Roosevelt Trail, Lake Heights ROOSTER 900

Indicate Type of Property: R-Residential, C-Commercial, I-Industrial, U-Utility, F-Farm, L-Lakeshore, T-Timber, M-Mineral

Main table with columns for Property Description, Valuations, and Taxes. Includes handwritten entries for property owners like 'Wilson & Olson' and 'Arthur L. Johnson'.

Vertical text on the right margin: Auditor's Plat of Lake Washburn Outlots, Tingle Bros., Roosevelt Trails, Lake Heights, Roosevelt 500

Assessment Roll and Tax List of Real Property in the Town of Crooked Lake

Indicate Type of Property: R-Residential, C-Commercial, I-Industrial, U-Utility, F-Farm, L-Lakeshore, T-Timber, M-Mineral

Cass County, Minnesota, for Taxes for the Year 1958.

Form 501-1957

Table with columns: IN WHOSE NAME ASSESSED, TO WHOM TRANSFERRED, DESCRIPTION OF PROPERTY, TRUE AND FULL VALUATIONS, ASSESSED VALUATIONS, VALUATIONS BY SCHOOL DISTRICTS AS EQUALIZED BY DEPARTMENT OF TAXATION, SOLD FOR TAXES, PAID, WHEN PAID, etc.

Vertical text on the right edge: Auditor's Plat of Lake Washburn Outlets, Tingdale Bros., Lake Heights ROOSEVELT 900

Assessment Roll and Tax List of Real Property in the Town of Crooked Lake, Cass County, Minnesota, for Taxes for the Year 1958.

Indicate Type of Property: R-Residential, C-Commercial, I-Industrial, U-Utility, F-Farm, L-Lakeshore, T-Timber, M-Mineral

Cass County, Minnesota, for Taxes for the Year 1958.

Table with columns: IN WHOSE NAME ASSESSED, TO WHOM TRANSFERRED, DESCRIPTION OF PROPERTY, TRUE AND FULL VALUATIONS, ASSESSED VALUATIONS, VALUATIONS BY SCHOOL DISTRICTS AS EQUALIZED BY DEPARTMENT OF TAXATION, SOLD FOR TAXES, TAXES, PAID, WHEN PAID, Number of Receipt, March Settlement 1959, June Settlement 1959, November Settlement 1959, Collections to First Monday in January 1960, Delinquent on First Monday in January 1960, Total Delinquent Tax and Penalty, REMARKS.

Vertical text on the right edge of the page, including 'Auditor's Plat of Lake Washington Outlots' and 'Lake Heights ROOSEVELT 500'.

Assessment Roll and Tax List of Real Property in the Town of Greenwood Lake

Indicate Type of Property: R-Residential, C-Commercial, I-Industrial, U-Utility, F-Farm, L-Lakeshore, T-Timber, M-Mineral

Table with columns: IN WHOSE NAME ASSESSED, TO WHOM TRANSFERRED, DESCRIPTION OF PROPERTY, TRUE AND FULL VALUATIONS, ASSESSED VALUATIONS, FINAL EQUALIZED VALUE. Includes handwritten entries for Mae Mc Kenneth D. Angue and L.D. Williams.

Cass County, Minnesota, for Taxes for the Year 1958.

Table with columns: SOLD FOR TAXES, VALUATIONS BY SCHOOL DISTRICTS AS EQUALIZED BY DEPARTMENT OF TAXATION, Tax including State Homestead, SPECIAL TAXES, TOTAL TAXES, PAID, WHEN PAID, Number of Receipt, March Settlement, June Settlement, November Settlement, Collections to First Monday in January 1960, Delinquent on First Monday in January 1960, Total Delinquent Tax and Penalty, REMARKS. Includes handwritten notes and dates.

Vertical text on the right edge: Auditor's Plat of Lake Washburn Outlots, Rosevelt Falls, Lake Heights ROOSEVELT 500

Assessment Roll and Tax List of Real Property in the Town of Crooked Lake

Indicate Type of Property: R-Residential, C-Commercial, I-Industrial, U-Utility, F-Farm, L-Lakeshore, T-Timber, M-Mineral

Table with columns: IN WHOSE NAME ASSESSED, TO WHOM TRANSFERRED, DESCRIPTION OF PROPERTY, TRUE AND FULL VALUATIONS, ASSESSED VALUATIONS, FINAL EQUALIZED VALUE.

Cass County, Minnesota, for Taxes for the Year 1958.

Table with columns: SOLD FOR TAXES, VALUATIONS BY SCHOOL DISTRICTS AS EQUALIZED BY DEPARTMENT OF TAXATION, PAID, WHEN PAID, Number of Receipt, March Settlement 1959, June Settlement 1959, Penalty, November Settlement 1959, Penalty, Collections to First Monday in January 1960, Penalty, Delinquent on First Monday in January 1960, Total Delinquent Tax and Penalty, REMARKS.

Vertical text on the right edge: Plat Originals, Auditor's Plat of Lake Washburn Outlots, Rosevelt Falls, Lake Heights BOCCAVILLE 500

Assessment Roll and Tax List of Real Property in the Town of Levee, Lake

Indicate Type of Property: R-Residential, C-Commercial, I-Industrial, U-Utility, F-Farm, L-Lakeshore, T-Timber, M-Mineral

Cass County, Minnesota, for Taxes for the Year 1958.

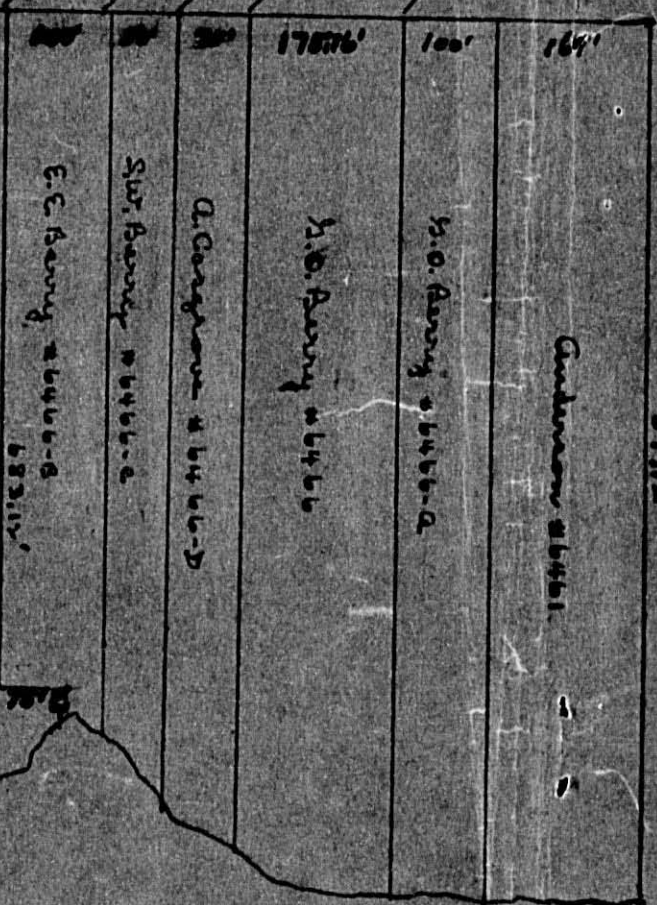
Table with columns: IN WHOSE NAME ASSESSED, TO WHOM TRANSFERRED, DESCRIPTION OF PROPERTY, TRUE AND FULL VALUATIONS, ASSESSED VALUATIONS, VALUATIONS BY SCHOOL DISTRICTS AS EQUALIZED BY DEPARTMENT OF TAXATION, SOLD FOR TAXES, PAID, WHEN PAID, Number of Receipt, March Settlement 1959, June Settlement 1959, Penalty, November Settlement 1959, Penalty, Collections to First Monday in January 1960, Penalty, Delinquent on First Monday in January 1960, Total Delinquent Tax and Penalty, REMARKS.

Handwritten names and addresses: M.A. & Lillian Casser, Norbert J. Koppay, State of Minnesota, Anthony & Clara Cosgrove, Ewald F. Neubert, Roy R. & Lorna C. Pedersen, Mrs. D. & Pearl R. Stiles, W. Frank & Selma L. Anderson, Gerald O. & Sarah A. Berry, Sidney M. & Ethel C. Berry, Emmetta & Marian Berry, Clarence Lohse, State of Minnesota, Norbert J. Koppay, State of Minnesota, State of Minnesota, State of Minnesota, James M. & Viola M. Olds

Vertical text on the right edge: Lake Superior Plat of Lake Washburn Outlots, Roosevelt Trails, Ingvalds Bros., Lake Heights ROOSEVELT 800

7172
5115
4321
272

62829'



G. Lohse # 6457

Smalley Hollow Lake

Plot Set 2
35-129-26



all 3/6/50

165061

Assessment Roll and Tax List of Real Property in the Town of Crooked Lake

Indicate Type of Property: R-Residential, C-Commercial, I-Industrial, U-Utility, F-Farm, L-Lakeshore, T-Timber, M-Mineral

Cass County, Minnesota, for Taxes for the Year 1958.

Table with columns: IN WHOSE NAME ASSESSED, TO WHOM TRANSFERRED, DESCRIPTION OF PROPERTY, TRUE AND FULL VALUATIONS, ASSESSED VALUATIONS, VALUATIONS BY SCHOOL DISTRICTS AS EQUALIZED BY DEPARTMENT OF TAXATION, SOLD FOR TAXES, PAID, WHEN PAID, Number of Receipt, March Settlement 1959, June Settlement 1959, Penalty, November Settlement 1959, Penalty, Collections to First Monday in January 1960, Penalty, Delinquent on First Monday in January 1960, Total Delinquent Tax and Penalty, REMARKS.

THE MARGINS

THE MARGINS

Vertical text on the right edge: Auditor's Plat of Lake Washington Outlots, Rosevelt Lake Heights, Ringdale Bros., Roosevelt Trails, Rosevelt Lake Heights, ROOSEVELT'S 800

Assessment Roll and Tax List of Real Property in the Town of Crooked Lake, Minnesota

Indicate Type of Property: R-Residential, C-Commercial, I-Industrial, U-Utility, F-Farm, L-Lakeshore, T-Timber, M-Mineral

Cass County, Minnesota, for Taxes for the Year 1958.

Table with columns: IN WHOSE NAME ASSESSED, TO WHOM TRANSFERRED, DESCRIPTION OF PROPERTY, TRUE AND FULL VALUATIONS, ASSESSED VALUATIONS, FINAL EQUALIZED VALUE.

Table with columns: VALUATIONS BY SCHOOL DISTRICTS AS EQUALIZED BY DEPARTMENT OF TAXATION, TAX INCLUDING STATE HOMESTEAD, SPECIAL TAXES, TOTAL TAXES, PAID, WHEN PAID, Number of Receipt, March Settlement 1959, June Settlement 1959, Penalty, November Settlement 1959, Collections to First Monday in January 1960, Delinquent on First Monday in January 1960, Total Delinquent Tax and Penalty, REMARKS.

Real Estate

Real Estate

Vertical text on the right edge: Rose Lake, P. A. ... Auditor's Plat of Lake Washburn Outlots, Roosevelt Lake Heights, Roosevelt Bros., Roosevelt Trails, ROOSEVELT 500

Assessment Roll and Tax List of Real Property in the Town of Crooked Lake

Cass County, Minnesota, for Taxes for the Year 1958.

Auditor's Plat of Lake Washburn Outlots

Table with columns: IN WHOSE NAME ASSESSED, TO WHOM TRANSFERRED, DESCRIPTION OF PROPERTY, TRUE AND FULL VALUATIONS, ASSESSED VALUATIONS, VALUATIONS BY SCHOOL DISTRICTS AS EQUALIZED BY DEPARTMENT OF TAXATION, SOLD FOR TAXES, PAID, WHEN PAID, March Settlement 1959, June Settlement 1959, Penalty, November Settlement 1959, Penalty, Collections to First Monday in January 1960, Delinquent on First Monday in January 1960, Total Delinquent Tax and Penalty, REMARKS.

Vertical text on the right edge: Roosevelt Lake Heights, Ringdale Bros., Roosevelt Trails, Roosevelt Lake Heights, Roosevelt 500

Assessment Roll and Tax List of Real Property in the Town of Crooked Lake

Cass County, Minnesota, for Taxes for the Year 1958.

Form 30 ILLINOIS-DEPT. OF REVENUE, SPRINGFIELD, ILL. Indicate Type of Property: R-Residential, C-Commercial, I-Industrial, U-Utility, F-Farm, L-Lakeshore, T-Timber, M-Mineral

Main table with columns: IN WHOSE NAME ASSESSED, TO WHOM TRANSFERRED, DESCRIPTION OF PROPERTY, TRUE AND FULL VALUATIONS, ASSESSED VALUATIONS, VALUATIONS BY SCHOOL DISTRICTS AS EQUALIZED BY DEPARTMENT OF TAXATION, TAXES, PAID, WHEN PAID, etc.

Auditor's Plat of Lake Washburn Outlots

Roosevelt Trails

Roosevelt Lake Heights

Roosevelt Lake Heights

Assessment Roll and Tax List of Real Property in the Town of Roosevelt Lake,

* Indicate Type of Property: R-Residential, C-Commercial, I-Industrial, U-Utility, F-Farm, L-Lakeshore, T-Timber, M-Mineral

Cass County, Minnesota, for Taxes for the Year 1958.

Form 30

IN WHOSE NAME ASSESSED	TO WHOM TRANSFERRED	DESCRIPTION OF PROPERTY					No. School District	TRUE AND FULL VALUATIONS				ASSESSED VALUATIONS							FINAL EQUALIZED VALUE	
		SUBDIVISION	Sec. or Lot	Town or Block	Rsg.	Number of Acres of Land		LAND Exclusive of Structures and Improvements	BUILDINGS and Other Structures	MACHINERY Permanently Attached to Real Estate	TOTAL True and Full Value	RURAL		ALL OTHER			MACHINERY Permanently Attached to Real Estate	TOTAL ASSESSED VALUE		Total Assessed Value as Equalized by the Board of Review
												Homestead Up to \$4,000 20%	Over \$4,000 and Non-Homestead 33 1/3%	Timber Land Class 3e 20%	Homestead Up to \$4,000 25%	Over \$4,000 and Non-Homestead 40%				
1	Oscar Delaney, Myron Ruth B. Huntley John S. & Lillian C. Pettman Bears Ridge Land Co.	Tingdale Bros. Roosevelt Trails				17	no	no	T		24				8			8		
2					2		no	no	T		24				8			8		
3																				
4																				
5																				
6	Irvin D. & Myrtle J. Arnold Edwin P. & Hazel R. Anderson Virginia M. Fisher		18				no	no	T		33			11				11		
7			2				no	no	T		30			6				6		
8			3				no	no	T		30			6				6		
9	Benjamin R. & Theresa B. Caniff Branigan B. & Lillian Louise Lake Shore Improvement Co.		4				no	no	T		30			10				10		
10			5				no	no	T		39			13				13		
11	Lake Shore Improvement Co. James S. W. W. W. W. Solberg		6				no	no	T		39			13				13		
12			7				no	no	T		42			14				14		
13																				
14																				
15																				
16																				
17																				
18																				
19																				
20																				
						291				291	12	77						29		

SOLD FOR TAXES	VALUATIONS BY SCHOOL DISTRICTS AS EQUALIZED BY DEPARTMENT OF TAXATION						Tax Including State Homestead	State Tax on Non-Homestead	SPECIAL TAXES	TOTAL TAXES	PAID	WHEN PAID	Number of Receipt	March Settlement 1959	June Settlement 1959	Penalty	November Settlement 1959	Penalty	Collections to First Monday in January 1960	Penalty	Delinquent on First Monday in January 1960	Total Delinquent Tax and Penalty	REMARKS
	District No.	District No.	District No.	District No.	District No.	District No.																	
	Rate	Rate	Rate	Rate	Rate	Rate																	
1																							
2																							
6																							
7																							
8																							
9																							
10																							
11																							
12																							
20																							

Pros. Lake
P. F. Ashburn
Roosevelt Lake Heights
ROOSEVELT 500

Assessment Roll and Tax List of Real Property in the Town of Crooked Lake

Indicate Type of Property: R-Residential, C-Commercial, I-Industrial, U-Utility, F-Farm, L-Lakeshore, T-Timber, M-Mineral

Form 50

Assessor's First of Lake Washburn Outlots
Lingdale Bros. Roosevelt Trails

Table with columns: IN WHOSE NAME ASSESSED, TO WHOM TRANSFERRED, DESCRIPTION OF PROPERTY, TRUE AND FULL VALUATIONS, ASSESSED VALUATIONS, and FINAL EQUALIZED VALUE. Includes handwritten entries for property owners like Mary Agnes Sebasta and Harold + Vesta Nordquist.

Cass County, Minnesota, for Taxes for the Year 1958.

Table with columns: VALUATIONS BY SCHOOL DISTRICTS AS EQUALIZED BY DEPARTMENT OF TAXATION, TAXES, PAID, WHEN PAID, and various settlement and penalty columns. Includes handwritten entries for tax amounts and payment dates.

Vertical text on the right edge of the page, including 'Roosevelt Lake Heights' and 'ROOSEVELT 500'.

Assessment Roll and Tax List of Real Property in the Town of Crooked Lake, Minnesota

Cass County, Minnesota, for Taxes for the Year 1958.

AUGUSTINE FIRST OF LAKE Washburn Outlots

Tim. Roosevelt Lake Heights Roosevelt Lake Heights ROOSEVELT 500

Table with columns: IN WHOSE NAME ASSESSED, TO WHOM TRANSFERRED, DESCRIPTION OF PROPERTY, TRUE AND FULL VALUATIONS, ASSESSED VALUATIONS, VALUATIONS BY SCHOOL DISTRICTS AS EQUALIZED BY DEPARTMENT OF TAXATION, TAXES PAID, WHEN PAID, etc.

Assessment Roll and Tax List of Real Property in the Town of Crooked Lake

Form 50

Indicate Type of Property: R-Residential, C-Commercial, I-Industrial, U-Utility, F-Farm, L-Lakeshore, T-Timber, M-Mineral

Cass County, Minnesota, for Taxes for the Year 1958.

Tingdale Bros. Auditor's Plat of Lake Washburn Outlots Roosevelt Trails

Table with columns: IN WHOSE NAME ASSESSED, TO WHOM TRANSFERRED, SUBDIVISION, TRUE AND FULL VALUATIONS, ASSESSED VALUATIONS, FINAL EQUALIZED VALUE. Includes handwritten entries like 'Robert & Grace M. Melbrath' and 'Lake Shore Improvement Co.'

Table with columns: SOLD FOR TAXES, VALUATIONS BY SCHOOL DISTRICTS AS EQUALIZED BY DEPARTMENT OF TAXATION, Tax including State Homestead, SPECIAL TAXES, TOTAL TAXES, PAID, WHEN PAID, Number of Receipt, March Settlement 1959, June Settlement 1959, Penalty, November Settlement 1959, Penalty, Collections to First Monday in January 1960, Penalty, Delinquent on First Monday in January 1960, Total Delinquent Tax and Penalty, REMARKS. Includes handwritten entries like 'PAID IN FULL OCT 6 1959' and 'PAID IN FULL MAY 29 1959'.

Room Lake P. Washburn Outlots Crooked Lake Heights Roosevelt Lake Heights ROOSEVELT 500

Assessment Roll and Tax List of Real Property in the Town of Dow of Brook Lake

Cass County, Minnesota, for Taxes for the Year 1958.

Form 30 - ILLINOIS STATE BOARD OF EQUALIZATION * Indicate Type of Property: R-Residential, C-Commercial, I-Industrial, U-Utility, F-Farm, L-Lakeshore, T-Timber, M-Mineral

Main table with columns: IN WHOSE NAME ASSESSED, TO WHOM TRANSFERRED, DESCRIPTION OF PROPERTY, TRUE AND FULL VALUATIONS, ASSESSED VALUATIONS, VALUATIONS BY SCHOOL DISTRICTS AS EQUALIZED BY DEPARTMENT OF TAXATION, TAXES, PAID, WHEN PAID, SPECIAL TAXES, TOTAL TAXES, etc.

Vertical text on the left margin: Auditor's Plat of Lake Washburn Outlots, Roosevelt Trails, Ingdale Bros.

Vertical text on the right margin: Roosevelt Lake Heights, Roosevelt 500, Washburn Outlots, P. Washburn, Ingdale Bros.

Assessment Roll and Tax List of Real Property in the Town of Crooked Lake

Cass County, Minnesota, for Taxes for the Year 1958.

Form 30 - MINN. STAT. ANN. § 260.01, SUBCHAPTER 10.01, INDENTURE. * Indicate Type of Property: R-Residential, C-Commercial, I-Industrial, U-Utility, F-Farm, L-Lakeshore, T-Timber, M-Mineral

Main table with columns: IN WHOSE NAME ASSESSED, TO WHOM TRANSFERRED, DESCRIPTION OF PROPERTY, TRUE AND FULL VALUATIONS, ASSESSED VALUATIONS, VALUATIONS BY SCHOOL DISTRICTS AS EQUALIZED BY DEPARTMENT OF TAXATION, SOLD FOR TAXES, PAID, WHEN PAID, Number of Receipt, March Settlement 1959, June Settlement 1959, Penalty, November Settlement 1959, Collections to First Monday in January 1960, Delinquent on First Monday in January 1960, Total Delinquent Tax and Penalty, REMARKS.

Auditor's Plat of Lake Ashburn Outlots, Ringdale Bros. Roosevelt Trails

Ringdale Bros. Roosevelt Trails, P.O. Box 100, Crooked Lake, Minnesota 55009

Assessment Roll and Tax List of Real Property in the Town of Wood Lake of Wood Lake County, Minnesota

Cass County, Minnesota, for Taxes for the Year 1958.

Form 3C Indicate Type of Property: R-Residential, C-Commercial, I-Industrial, U-Utility, F-Farm, L-Lakeshore, T-Timber, M-Mineral

Table with columns: IN WHOSE NAME ASSESSED, TO WHOM TRANSFERRED, SUBDIVISION, TRUE AND FULL VALUATIONS, ASSESSED VALUATIONS, VALUATIONS BY SCHOOL DISTRICTS AS EQUALIZED BY DEPARTMENT OF TAXATION, SOLD FOR TAXES, PAID, WHEN PAID, Number of Receipt, March Settlement, June Settlement, November Settlement, Collections to First Monday in January 1960, Delinquent on First Monday in January 1960, Total Delinquent Tax and Penalty, REMARKS.

Vertical text on the left edge: Auditor's Plat of Lake Washburn Outlots, Ringdale Bros. Roosevelt Trails

Vertical text on the right edge: Ring Lake, P.L. Washburn Outlots, Orana Heights, Roosevelt Lake Heights, ROOSEVELT 500

Assessment Roll and Tax List of Real Property in the Town of Wooded Lake

Indicate Type of Property: R-Residential, C-Commercial, I-Industrial, U-Utility, F-Farm, L-Lakeshore, T-Timber, M-Mineral

Cass County, Minnesota, for Taxes for the Year 1958.

Form 50

Table with columns: IN WHOSE NAME ASSESSED, TO WHOM TRANSFERRED, SUBDIVISION, TRUE AND FULL VALUATIONS, ASSESSED VALUATIONS, VALUATIONS BY SCHOOL DISTRICTS AS EQUALIZED BY DEPARTMENT OF TAXATION, SOLD FOR TAXES, PAID, WHEN PAID, etc.

Vertical text on the left margin: Auditor's Plat of Lake Washburn Outlots, Tingle Bros., Roosevelt Trails, Dingle Bros., Roosevelt Trails

Vertical text on the right margin: Ringed, Rosee, Lake, P. Washburn Outlots, Orana Heights, Roosevelt Lake Heights, ROOSEVELT 900

Assessment Roll and Tax List of Real Property in the Town of Crooked Lake

* Indicate Type of Property: R-Residential, C-Commercial, I-Industrial, U-Utility, F-Farm, L-Lakeshore, T-Timber, M-Mineral

Cass County, Minnesota, for Taxes for the Year 1958.

Form 50 - MINN. STATE GOVERNMENT, ST. PAUL, MINN.

Main table with columns: IN WHOSE NAME ASSESSED, TO WHOM TRANSFERRED, SUBDIVISION, TRUE AND FULL VALUATIONS, ASSESSED VALUATIONS, VALUATIONS BY SCHOOL DISTRICTS AS EQUALIZED BY DEPARTMENT OF TAXATION, TAXES, PAID, WHEN PAID, etc.

Vertical text on the left edge: Auditor's Plat of Lake Washburn Outlets, Roosevelt Trails, Iowa Heights, Roosevelt Lake Heights, Roosevelt 500

Vertical text on the right edge: Roosevelt Lake Heights, Roosevelt 500

Form 30... Indicate Type of Property: R-Residential, C-Commercial, I-Industrial, U-Utility, F-Farm, L-Lakeshore, T-Timber, M-Mineral

Table with columns: IN WHOSE NAME ASSESSED, TO WHOM TRANSFERRED, SUBDIVISION, DESCRIPTION OF PROPERTY, TRUE AND FULL VALUATIONS, ASSESSED VALUATIONS, VALUATIONS BY SCHOOL DISTRICTS AS EQUALIZED BY DEPARTMENT OF TAXATION, SOLD FOR TAXES, PAID, WHEN PAID, Number of Receipt, March Settlement 1959, June Settlement 1959, Penalty, November Settlement 1959, Penalty, Collections to First Monday in January 1960, Penalty, Delinquent on First Monday in January 1960, Total Delinquent Tax and Penalty, REMARKS.

Vertical text on the left edge: Ringdale Bros., Roosevelt Lake Heights, Roosevelt SOO, Washburn Outlots, Washburn Heights, Washburn Office, Washburn Lake, Washburn Point.

Vertical text on the right edge: Ringdale Bros., Washburn Office, Washburn Lake, Washburn Point.

Assessment Roll and Tax List of Real Property in the Town of Goodrich Lake

Indicate Type of Property: R-Residential, C-Commercial, I-Industrial, U-Utility, F-Farm, L-Lakeshore, T-Timber, M-Mineral

Cass County, Minnesota, for Taxes for the Year 1958.

Table with columns: IN WHOSE NAME ASSESSED, TO WHOM TRANSFERRED, SUBDIVISION, TRUE AND FULL VALUATIONS, ASSESSED VALUATIONS, VALUATIONS BY SCHOOL DISTRICTS AS EQUALIZED BY DEPARTMENT OF TAXATION, SOLD FOR TAXES, PAID, WHEN PAID, March Settlement, June Settlement, Penalty, November Settlement, Collections to First Monday in January 1960, Delinquent on First Monday in January 1960, Total Delinquent Tax and Penalty, REMARKS.

Auditor's Plat of Lake Washburn Outlots, Tingdale Bros., Roosevelt Trails, Iowana Heights, Roosevelt SOO, Roosevelt Lake Heights, Roosevelt Lake, Lawrence Point Lake

Sum P. J. Washburn, Auditor, Brown's Washburn Lake Addition, Lawrence Point Lake

Assessment Roll and Tax List of Real Property in the Town of Crooked Lake

Indicate Type of Property: R-Residential, C-Commercial, I-Industrial, U-Utility, F-Farm, L-Lakeshore, T-Timber, M-Mineral

Form 9C

Table with columns: IN WHOSE NAME ASSESSED, TO WHOM TRANSFERRED, SUBDIVISION, TRUE AND FULL VALUATIONS, ASSESSED VALUATIONS, FINAL EQUALIZED VALUE. Includes handwritten entries for various property owners like Clemens M. & Mary Hageman.

Cass County, Minnesota, for Taxes for the Year 1958.

Table with columns: VALUATIONS BY SCHOOL DISTRICTS AS EQUALIZED BY DEPARTMENT OF TAXATION, SOLD FOR TAXES, PAID, WHEN PAID, SPECIAL TAXES, TOTAL TAXES, PAID, WHEN PAID, March Settlement, June Settlement, November Settlement, Collections to First Monday in January 1960, Delinquent on First Monday in January 1960, Total Delinquent Tax and Penalty, REMARKS. Includes handwritten entries for various tax payments.

Vertical text on the left edge of the page, including 'Avalon's Plat of Lake Washburn Outlots', 'Tingdale Bros. Washburn Outlots', 'Roosevelt 500', 'Roosevelt Lake Heights', 'Roosevelt 500', 'Roosevelt Lake Heights', 'Roosevelt 500', 'Roosevelt Lake Heights'.

Vertical text on the right edge of the page, including 'Sun P. L. Washburn Outlots', 'Brown's Washburn Lake Addition', 'Tingdale Bros. Lake Heights', 'Roosevelt Lake Heights', 'Roosevelt 500', 'Roosevelt Lake Heights'.

Assessment Roll and Tax List of Real Property in the Town of Wooded Lake

Cass County, Minnesota, for Taxes for the Year 1958.

Form 9C - MINN. STAT. COMP. CODE, SECTION 465.01
Indicate Type of Property: R-Residential, C-Commercial, I-Industrial, U-Utility, F-Farm, L-Lakeshore, T-Timber, M-Mineral

Table with columns: IN WHOSE NAME ASSESSED, TO WHOM TRANSFERRED, DESCRIPTION OF PROPERTY, TRUE AND FULL VALUATIONS (LAND, BUILDINGS, MACHINERY, TOTAL), ASSESSED VALUATIONS (RURAL, ALL OTHER), TOTAL ASSESSED VALUE, FINAL EQUALIZED VALUE.

Table with columns: SOLD FOR TAXES, VALUATIONS BY SCHOOL DISTRICTS AS EQUALIZED BY DEPARTMENT OF TAXATION, SPECIAL TAXES, TOTAL TAXES, PAID, WHEN PAID, Number of Receipt, March Settlement 1959, June Settlement 1959, Penalty, November Settlement 1959, Penalty, Collections to First Monday in January 1960, Penalty, Delinquent on First Monday in January 1960, Total Delinquent Tax and Penalty, REMARKS.

Roosevelt Soo
Roosevelt Lake Heights
Roosevelt Lake
Roosevelt Trail
Roosevelt 000
Roosevelt Beach on
Roosevelt Lake
Plat of Brown's Washburn Lake
Addition
Roosevelt Park
Roosevelt Lake
Roosevelt

Washburn
Roosevelt Lake
Roosevelt Beach on
Roosevelt Lake
Plat of Brown's Washburn Lake
Addition
Roosevelt Park
Roosevelt Lake
Roosevelt

Assessment Roll and Tax List of Real Property in the Town of Crooked Lake

Cass County, Minnesota, for Taxes for the Year 1958.

Form 50 - 1957 - 58 - 59 - 60 - 61 - 62 - 63 - 64 - 65 - 66 - 67 - 68 - 69 - 70 - 71 - 72 - 73 - 74 - 75 - 76 - 77 - 78 - 79 - 80 - 81 - 82 - 83 - 84 - 85 - 86 - 87 - 88 - 89 - 90 - 91 - 92 - 93 - 94 - 95 - 96 - 97 - 98 - 99 - 100

* Indicate Type of Property: R-Residential, C-Commercial, I-Industrial, U-Utility, F-Farm, L-Lakeshore, T-Timber, M-Mineral

Main data table with columns: IN WHOSE NAME ASSESSED, TO WHOM TRANSFERRED, SUBDIVISION, TRUE AND FULL VALUATIONS, ASSESSED VALUATIONS, VALUATIONS BY SCHOOL DISTRICTS AS EQUALIZED BY DEPARTMENT OF TAXATION, SOLD FOR TAXES, PAID, WHEN PAID, SPECIAL TAXES, TOTAL TAXES, and REMARKS.

Vertical text on the far left edge: Roosevelt 500, Lake Heights, Washburn, etc.

Vertical text on the far right edge: Washburn, Lake Heights, etc.

Assessment Roll and Tax List of Real Property in the Town of Crooked Lake

Form 30 ... Indicate Type of Property: R-Residential, C-Commercial, I-Industrial, U-Utility, F-Farm, L-Lakeshore, T-Timber, M-Mineral

Cass County, Minnesota, for Taxes for the Year 1958.

Table with columns: IN WHOSE NAME ASSESSED, TO WHOM TRANSFERRED, SUBDIVISION, TRUE AND FULL VALUATIONS (LAND, BUILDINGS, MACHINERY, TOTAL), ASSESSED VALUATIONS (RURAL, ALL OTHER, MACHINERY, TOTAL), VALUATIONS BY SCHOOL DISTRICTS AS EQUALIZED BY DEPARTMENT OF TAXATION, TAXES, PAID, WHEN PAID, Number of Receipt, March Settlement 1959, June Settlement 1959, Penalty, November Settlement 1959, Collections to First Monday in January 1960, Delinquent on First Monday in January 1960, Total Delinquent Tax and Penalty, REMARKS.

Auditor's List of Lots: Washburn Outlot, Roosevelt Lake Addition, etc.

Auditor's List of Lots: Sunset Beach on Roosevelt Lake, Plat of Part of Roosevelt Sh., etc.

Assessment Roll and Tax List of Real Property in the Town of Goodland Lake

Cass County, Minnesota, for Taxes for the Year 1958.

Form 5C - Indicate Type of Property: R-Residential, C-Commercial, I-Industrial, U-Utility, F-Farm, L-Lakeshore, T-Timber, M-Mineral

Main table with columns: IN WHOSE NAME ASSESSED, TO WHOM TRANSFERRED, SUBDIVISION, TRUE AND FULL VALUATIONS, ASSESSED VALUATIONS, VALUATIONS BY SCHOOL DISTRICTS AS EQUALIZED BY DEPARTMENT OF TAXATION, TAXES, PAID, WHEN PAID, etc.

Vertical text on the left margin: Auditor's Plat of Lake Washburn Outlots, Plat of Outlots of Roosevelt Addition, etc.

Vertical text on the right margin: Sumner Beach on Roosevelt Lake, Plat of Part of Roosevelt Sh., etc.

Assessment Roll and Tax List of Real Property in the Town of Crooked Lake

Cass County, Minnesota, for Taxes for the Year 1958.

Form 30 Indicate Type of Property: R-Residential, C-Commercial, I-Industrial, U-Utility, F-Farm, L-Lakeshore, T-Timber, M-Mineral

Table with columns: IN WHOSE NAME ASSESSED, TO WHOM TRANSFERRED, DESCRIPTION OF PROPERTY, TRUE AND FULL VALUATIONS, ASSESSED VALUATIONS, VALUATIONS BY SCHOOL DISTRICTS AS EQUALIZED BY DEPARTMENT OF TAXATION, SOLD FOR TAXES, SPECIAL TAXES, TOTAL TAXES, PAID, WHEN PAID, Number of Receipt, March Settlement 1959, June Settlement 1959, Penalty, November Settlement 1959, Penalty, Collections to First Monday in January 1960, Penalty, Delinquent on First Monday in January 1960, Total Delinquent Tax and Penalty, REMARKS.

Vertical text on the left margin: Auditor's Plat of Washburn Outlot, Plat of Outlot of Roosevelt, Aud.P. Lake Wash. Outlot, Addition, Roosevelt Lake, Washburn Outlot, Plat of Part of Roosevelt Shores, Lake Washburn, Plat of Part of Roosevelt Shores, Lake Washburn.

Vertical text on the right margin: Washburn Flats, Sunset Beach on Roosevelt Lake, Plat of Part of Roosevelt Shores, Lake Washburn, Plat of Part of Roosevelt Shores, Lake Washburn.

Handwritten names: Harry J. & Mabel Skelle, Joyce White, Helen W. Delamater, Mabel Haglund, Raymond H. & Josephine Rork, Jack Labrelle, Lena Kalbridge, Madge B. Blanchard, Andrew & Borghild Hagstrom, Harold W. & Helene V. Peterson, Geo. H. & Marion T. Walstrom, Frank M. James.

Handwritten note: Dingdale Bros. Lake Lawrence Point (Lot 8 Sec. 26-137-26)

Handwritten notes: 1/2 of 9, 1/2 of 9

Summary totals: 651 1912 2563 191 536 727

Summary totals: 191 536 727 16606 348 16954

Summary totals: 4626 9618 1370 1340

* Indicate Type of Property: R-Residential, C-Commercial, I-Industrial, U-Utility, F-Farm, L-Lakeshore, T-Timber, M-Mineral

Main table with columns: IN WHOSE NAME ASSESSED, TO WHOM TRANSFERRED, SUBDIVISION, TRUE AND FULL VALUATIONS, ASSESSED VALUATIONS, VALUATIONS BY SCHOOL DISTRICTS AS EQUALIZED BY DEPARTMENT OF TAXATION, SOLD FOR TAXES, PAID, WHEN PAID, Number of Receipt, March Settlement 1959, June Settlement 1959, Penalty, November Settlement 1959, Collections to First Monday in January 1960, Delinquent on First Monday in January 1960, Total Delinquent Tax and Penalty, REMARKS.

Assessment Roll and Tax List of Real Property in the Town of Crooked Lake, Cass County, Minnesota, for Taxes for the Year 1958.

Form 30

* Indicate Type of Property: R-Residential, C-Commercial, I-Industrial, U-Utility, F-Farm, L-Lakeshore, T-Timber, M-Mineral

Table with columns: IN WHOSE NAME ASSESSED, TO WHOM TRANSFERRED, DESCRIPTION OF PROPERTY, TRUE AND FULL VALUATIONS, ASSESSED VALUATIONS, and FINAL EQUALIZED VALUE. Includes handwritten entries for property owners like Roy H. Erickson and Kenneth B. Fossen.

Cass County, Minnesota, for Taxes for the Year 1958.

Table with columns: VALUATIONS BY SCHOOL DISTRICTS AS EQUALIZED BY DEPARTMENT OF TAXATION, TAXES, PAID, WHEN PAID, and REMARKS. Contains handwritten entries for property 1 and 2, including tax amounts and payment dates.

Assessment Roll and Tax List of Real Property in the Town of *Down* of *Washburn Lake*

Cass County, Minnesota, for Taxes for the Year 1958.

Form 9C Indicate Type of Property: R-Residential, C-Commercial, I-Industrial, U-Utility, F-Farm, L-Lakeshore, T-Timber, M-Mineral

Table with columns for IN WHOSE NAME ASSESSED, TO WHOM TRANSFERRED, DESCRIPTION OF PROPERTY, TRUE AND FULL VALUATIONS, ASSESSED VALUATIONS, VALUATIONS BY SCHOOL DISTRICTS AS EQUALIZED BY DEPARTMENT OF TAXATION, and TAXES. Includes handwritten entries for names like Pearl O. Riley and James Olds.

Vertical text on the left edge: Auditor's Plat of Lake Washburn... Plat of Sunset Beach on Roosevelt Lake... Addition Plat of Part of Lot 7

Vertical text on the right edge: Patterson & Co. Bogen Company's... Lake Washburn

Assessment Roll and Tax List of Real Property in the Town of Crooked Lake

Indicate Type of Property: R-Residential, C-Commercial, I-Industrial, U-Utility, F-Farm, L-Lakeshore, T-Timber, M-Mineral

Cass County, Minnesota, for Taxes for the Year 1958.

Main table with columns: IN WHOSE NAME ASSESSED, TO WHOM TRANSFERRED, SUBDIVISION, DESCRIPTION OF PROPERTY, TRUE AND FULL VALUATIONS (RURAL, ALL OTHER, MACHINERY), FINAL EQUALIZED VALUE, SOLD FOR TAXES, VALUATIONS BY SCHOOL DISTRICTS AS EQUALIZED BY DEPARTMENT OF TAXATION, Tax including State Homestead, State Tax on Non-Homestead, SPECIAL TAXES, TOTAL TAXES, PAID, WHEN PAID, Number of Receipt, March Settlement 1959, June Settlement 1959, Penalty, November Settlement 1959, Penalty, Collections to First Monday in January 1960, Delinquent on First Monday in January 1960, Total Delinquent Tax and Penalty, REMARKS.

Vertical text on the left margin: Auditor's Plat of Washburn Outlot, Plat of Sunset Beach on Roosevelt Lake, Plat of Roosevelt Lake, Plat of part of Lot 7, Roosevelt Shores, Plat of Brown's Washburn Lake, Plat of Lawrence Point, Roosevelt Shores, Plat of Brown's Washburn Lake, Plat of Lawrence Point, Roosevelt Shores, Plat of Brown's Washburn Lake, Plat of Lawrence Point, Roosevelt Shores.

Vertical text on the right margin: Plat of Sunset Beach on Roosevelt Lake, Plat of Roosevelt Lake, Plat of part of Lot 7, Roosevelt Shores, Plat of Brown's Washburn Lake, Plat of Lawrence Point, Roosevelt Shores, Plat of Brown's Washburn Lake, Plat of Lawrence Point, Roosevelt Shores, Plat of Brown's Washburn Lake, Plat of Lawrence Point, Roosevelt Shores.

Assessment Roll and Tax List of Real Property in the Town of Wood Lake

* Indicate Type of Property: R-Residential, C-Commercial, I-Industrial, U-Utility, F-Farm, L-Lakeshore, T-Timber, M-Mineral

Cass County, Minnesota, for Taxes for the Year 1958.

Table with columns: IN WHOSE NAME ASSESSED, TO WHOM TRANSFERRED, SUBDIVISION, DESCRIPTION OF PROPERTY, TRUE AND FULL VALUATIONS, ASSESSED VALUATIONS, VALUATIONS BY SCHOOL DISTRICTS AS EQUALIZED BY DEPARTMENT OF TAXATION, SOLD FOR TAXES, PAID, WHEN PAID, March Settlement 1959, June Settlement 1959, Penalty, November Settlement 1959, Collections to First Monday in January 1960, Delinquent on First Monday in January 1960, Total Delinquent Tax and Penalty, REMARKS.

Vertical text on the left margin: Auditor's Plat of Lake Washburn, Plat of Sunset Beach on Lake Washburn, Plat of Roosevelt Lake on Lake Washburn, Plat of Part of Roosevelt Shores on Lake Washburn, Plat of Brown's Washburn Lake, Plat of Pines-A-Plenty on Lake Washburn, Plat of O'Brien's Plat on Lake Washburn.

Vertical text on the right margin: Auditor's Plat of Lake Washburn, Plat of Sunset Beach on Lake Washburn, Plat of Roosevelt Lake on Lake Washburn, Plat of Part of Roosevelt Shores on Lake Washburn, Plat of Brown's Washburn Lake, Plat of Pines-A-Plenty on Lake Washburn, Plat of O'Brien's Plat on Lake Washburn.

Assessment Roll and Tax List of Real Property in the Down of Crooked Lake

Cass County, Minnesota, for Taxes for the Year 1958.

Form 30 - Indicate Type of Property: R-Residential, C-Commercial, I-Industrial, U-Utility, F-Farm, L-Lakeshore, T-Timber, M-Mineral

Table with columns: IN WHOSE NAME ASSESSED, TO WHOM TRANSFERRED, SUBDIVISION, DESCRIPTION OF PROPERTY, TRUE AND FULL VALUATIONS, ASSESSED VALUATIONS, VALUATIONS BY SCHOOL DISTRICTS AS EQUALIZED BY DEPARTMENT OF TAXATION, TAXES, PAID, WHEN PAID, etc.

Vertical text on the left margin: Auditor's Plat of Washburn County, Plat of Sunset Beach on Roosevelt Lake, Plat of Part of Roosevelt Lake on Roosevelt Shores in Plat of Part of Lot 7, etc.

Vertical text on the right margin: Plat of Part of Bogen Company's Addition to Roosevelt Lake, Plat of Part of Offshore on Roosevelt Lake, etc.

Assessment Roll and Tax List of Real Property in the Town of Crooked Lake

Indicate Type of Property: R-Residential, C-Commercial, I-Industrial, U-Utility, F-Farm, L-Lakeshore, T-Timber, M-Mineral

Cass County, Minnesota, for Taxes for the Year 1958.

Table with columns: IN WHOSE NAME ASSESSED, TO WHOM TRANSFERRED, DESCRIPTION OF PROPERTY, TRUE AND FULL VALUATIONS (RURAL, ALL OTHER, MACHINERY, TOTAL ASSESSED VALUE), ASSESSED VALUATIONS (RURAL, ALL OTHER, MACHINERY, TOTAL ASSESSED VALUE), FINAL EQUALIZED VALUE, VALUATIONS BY SCHOOL DISTRICTS AS EQUALIZED BY DEPARTMENT OF TAXATION, TAXES (SPECIAL, TOTAL), PAID, WHEN PAID, Number of Receipt, March Settlement, June Settlement, Penalty, November Settlement, Penalty, Collections to First Monday in January 1960, Penalty, Delinquent on First Monday in January 1960, Total Delinquent Tax and Penalty, REMARKS.

Vertical text along the left edge of the page, including names like 'Tingdale Bros.', 'Browm's Washburn Lake', and 'Roosevelt Lake'.

Vertical text along the right edge of the page, including names like 'Patterson', 'Bogen Company's', and 'Roosevelt Lake Addition'.

Assessment Roll and Tax List of Real Property in the Down of Brooked Lake

Cass County, Minnesota, for Taxes for the Year 1958.

Form 50 Indicate Type of Property: R-Residential, C-Commercial, I-Industrial, U-Utility, F-Farm, L-Lakeshore, T-Timber, M-Mineral

Table with columns: IN WHOSE NAME ASSESSED, TO WHOM TRANSFERRED, SUBDIVISION, DESCRIPTION OF PROPERTY, TRUE AND FULL VALUATIONS, ASSESSED VALUATIONS, VALUATIONS BY SCHOOL DISTRICTS AS EQUALIZED BY DEPARTMENT OF TAXATION, SOLD FOR TAXES, PAID, WHEN PAID, Number of Receipt, March Settlement 1959, June Settlement 1959, Penalty, Collections to First Monday in January 1960, Delinquent on First Monday in January 1960, Total Delinquent Tax and Penalty, REMARKS.

Auditor's Plat of Lake Washburn... Tingle Bros. ...

Patternson H. A. G. Bogen Company's... Plat of O'Brien's Plat of O'Brien's Plat on Lake Washburn...

Assessment Roll and Tax List of Real Property in the Town of Wooded Lake

* Indicate Type of Property: R-Residential, C-Commercial, I-Industrial, U-Utility, F-Farm, L-Lakeshore, T-Timber, M-Mineral

Cass County, Minnesota, for Taxes for the Year 1958.

Table with columns: IN WHOSE NAME ASSESSED, TO WHOM TRANSFERRED, SUBDIVISION, TRUE AND FULL VALUATIONS, ASSESSED VALUATIONS, VALUATIONS BY SCHOOL DISTRICTS AS EQUALIZED BY DEPARTMENT OF TAXATION, TAXES, PAID, WHEN PAID, SPECIAL TAXES, TOTAL TAXES, MARCH SETTLEMENT, JUNE SETTLEMENT, PENALTY, NOVEMBER SETTLEMENT, COLLECTIONS TO FIRST MONDAY IN JANUARY 1960, DELINQUENT ON FIRST MONDAY IN JANUARY 1960, TOTAL DELINQUENT TAX AND PENALTY, REMARKS.

Vertical text on the left margin: Tingle Bros., Washburn Ontonagon, Lusher's Bay, etc.

Vertical text on the right margin: Addition, Patterson H. A. G. Bogen Company's, etc.

Assessment Roll and Tax List of Real Property in the Town of Spoon Lake

Cass County, Minnesota, for Taxes for the Year 1958.

* Indicate Type of Property: R-Residential, C-Commercial, I-Industrial, U-Utility, F-Farm, L-Lakeshore, T-Timber, M-Mineral

Table with columns: IN WHOSE NAME ASSESSED, TO WHOM TRANSFERRED, SUBDIVISION, TRUE AND FULL VALUATIONS, ASSESSED VALUATIONS, FINAL EQUALIZED VALUE. Includes handwritten entries for properties on Kaul's Wood Lake Shores.

Table with columns: VALUATIONS BY SCHOOL DISTRICTS AS EQUALIZED BY DEPARTMENT OF TAXATION, TAXES (SPECIAL, TOTAL), PAID, WHEN PAID, Number of Receipt, March Settlement, June Settlement, Delinquent on First Monday, Total Delinquent Tax and Penalty. Includes handwritten notes like 'PAID IN FULL' and dates.

Vertical text on the left edge: Auditor's Plat of Lake Washburn, Addition, Patterson & A. G. Bogen Company's Lots, Roosevelt Lake Addition, O'Brien's Plat, Plat of Offlot "A2" of Washburn and Lawrence.

Vertical text on the right edge: Auditor's Plat of Lake Washburn, Addition, Patterson & A. G. Bogen Company's Lots, Roosevelt Lake Addition, O'Brien's Plat, Plat of Offlot "A2" of Washburn and Lawrence.

Assessment Roll and Tax List of Real Property in the Town of Lacrosse Lake

Indicate Type of Property: R-Residential, C-Commercial, I-Industrial, U-Utility, F-Farm, L-Lakeshore, T-Timber, M-Mineral

Table with columns: IN WHOSE NAME ASSESSED, TO WHOM TRANSFERRED, DESCRIPTION OF PROPERTY, TRUE AND FULL VALUATIONS, ASSESSED VALUATIONS, FINAL EQUALIZED VALUE. Includes handwritten entries like 'Kavli Wood Lake Shores' and 'Outlot'.

390 390 130 130

Cass County, Minnesota, for Taxes for the Year 1958.

Table with columns: SOLD FOR TAXES, VALUATIONS BY SCHOOL DISTRICTS AS EQUALIZED BY DEPARTMENT OF TAXATION, SPECIAL TAXES, TOTAL TAXES, PAID, WHEN PAID, Number of Receipt, March Settlement 1959, June Settlement 1959, Penalty, November Settlement 1959, Penalty, Collections to First Monday in January 1960, Penalty, Delinquent on First Monday in January 1960, Total Delinquent Tax and Penalty, REMARKS. Includes handwritten notes like 'PAID IN FULL' and '12088'.

130 2964 86 3050 2580 470

Margale Bros. Washburn Outlot, Rootinada Bros. Lake Minnetonka, Pine-A-Plenty on Lake Washburn, Lusher's Bay

Paterson, A. G. - Hopgn Company's, Roosevelt Lake Addition, O'Brien's Plat, Roosevelt and Laurson

Assessment Roll and Tax List of Real Property in the Town of Down of Grant Lake, Minn.

Cass County, Minnesota, for Taxes for the Year 1958.

Form 300 Indicate Type of Property: R-Residential, C-Commercial, I-Industrial, U-Utility, F-Farm, L-Lakeshore, T-Timber, M-Mineral

Table with columns: IN WHOSE NAME ASSESSED, TO WHOM TRANSFERRED, DESCRIPTION OF PROPERTY, TRUE AND FULL VALUATIONS, ASSESSED VALUATIONS (RURAL, ALL OTHER), and FINAL EQUALIZED VALUE. Includes handwritten entries like 'A. G. Bogen Co.' and 'Laurel Allen Lalas'.

Vertical text on the left margin: Magdalen Bros., List of Washburn, Oulo, ...

Table with columns: SOLD FOR TAXES, VALUATIONS BY SCHOOL DISTRICTS AS EQUALIZED BY DEPARTMENT OF TAXATION, SPECIAL TAXES, TOTAL TAXES, PAID, WHEN PAID, Number of Receipt, March Settlement 1959, June Settlement 1959, November Settlement 1959, Collections to First Monday in January 1960, Delinquent on First Monday in January 1960, Total Delinquent Tax and Penalty, and REMARKS. Includes handwritten entries like 'PAID IN FULL'.

Vertical text on the right margin: Pattergon Lake Shore, Res Annd O'Brien's Plat, ...

Assessment Roll and Tax List of Real Property in the District of Lacrosse Lake

Cass County, Minnesota, for Taxes for the Year 1958.

Form 30

Indicate Type of Property: R-Residential, C-Commercial, I-Industrial, U-Utility, F-Farm, L-Lakeshore, T-Timber, M-Mineral

Table with columns: IN WHOSE NAME ASSESSED, TO WHOM TRANSFERRED, SUBDIVISION, DESCRIPTION OF PROPERTY, TRUE AND FULL VALUATIONS, ASSESSED VALUATIONS, and FINAL EQUALIZED VALUE.

Table with columns: SOLD FOR TAXES, VALUATIONS BY SCHOOL DISTRICTS AS EQUALIZED BY DEPARTMENT OF TAXATION, and columns for tax payments (PAID, WHEN PAID, etc.).

Vertical text on the far left edge of the page: "Kingsdale Bros. Additions... Roosevelt Lake Addition..."

Vertical text on the far right edge of the page: "Smoky Hollow Addition... Patterson Lake Shore..."

Assessment Roll and Tax List of Real Property in the Town of Crooked Lake

Indicate Type of Property: R-Residential, C-Commercial, I-Industrial, U-Utility, F-Farm, L-Lakeshore, T-Timber, M-Mineral

Cass County, Minnesota, for Taxes for the Year 1958.

Table with columns: IN WHOSE NAME ASSESSED, TO WHOM TRANSFERRED, DESCRIPTION OF PROPERTY, TRUE AND FULL VALUATIONS, ASSESSED VALUATIONS, VALUATIONS BY SCHOOL DISTRICTS AS EQUALIZED BY DEPARTMENT OF TAXATION, SOLD FOR TAXES, PAID, WHEN PAID, Number of Receipt, March Settlement 1959, June Settlement 1959, Penalty, November Settlement 1959, Penalty, Collections to First Monday in January 1960, Penalty, Delinquent on First Monday in January 1960, Total Delinquent Tax and Penalty, REMARKS.

Vertical text on the left margin: Auditors' Plat of Lake..., Washburn, Out to..., Sunset Beach on..., Lusher's Bay..., Smoky Hollow Addition, Patterson Lake Shore Lots, Rees Anchorage, Brien's Pl...

Vertical text on the right margin: Sabins' Eastburn Addition, First Addition to..., Des Moines...

Assessment Roll and Tax List of Real Property in the Town of Crooked Lake

Indicate Type of Property: R-Residential, C-Commercial, I-Industrial, U-Utility, F-Farm, L-Lakeshore, T-Timber, M-Mineral

Cass County, Minnesota, for Taxes for the Year 1958.

Table with columns: IN WHOSE NAME ASSESSED, TO WHOM TRANSFERRED, SUBDIVISION, DESCRIPTION OF PROPERTY, TRUE AND FULL VALUATIONS, ASSESSED VALUATIONS, VALUATIONS BY SCHOOL DISTRICTS AS EQUALIZED BY DEPARTMENT OF TAXATION, SOLD FOR TAXES, PAID, WHEN PAID, Number of Receipt, March Settlement 1959, June Settlement 1959, Penalty, November Settlement 1959, Penalty, Collections to First Monday in January 1960, Penalty, Delinquent on First Monday in January 1960, Total Delinquent Tax and Penalty, REMARKS.

Assessment Roll and Tax List of Real Property in the

Town of *Down* of *Brooked Lake*

* Indicate Type of Property: R-Residential, C-Commercial, I-Industrial, U-Utility, F-Farm, L-Lakeshore, T-Timber, M-Mineral

Cass County, Minnesota, for Taxes for the Year 1958.

IN WHOSE NAME ASSESSED	TO WHOM TRANSFERRED	DESCRIPTION OF PROPERTY					TRUE AND FULL VALUATIONS							ASSESSED VALUATIONS				FINAL EQUALIZED VALUE
		SUBDIVISION	Sec. or Lot	Town or Block	Rng.	Number of Acres of Land	LAND Exclusive of Structures and Improvements	BUILDINGS and Other Structures	MACHINERY Permanently Attached to Real Estate	TOTAL True and Full Value	RURAL		ALL OTHER		MACHINERY Permanently Attached to Real Estate	TOTAL ASSESSED VALUE	Total Assessed Value as Equalized by the Board of Review	
											Homestead Up to \$4,000 20%	Over \$4,000 and Non-Homestead 33 1/3%	Timber Land Class 3e 20%	Homestead Up to \$4,000 25%				
<i>William & Bernice F. La Ferriere</i>	<i>First Addition to Roosevelt Shore</i>		<i>21</i>				<i>48</i>		<i>48</i>		<i>16</i>				<i>16</i>			
<i>E. H. & Mary Van Hech</i>			<i>22</i>				<i>75</i>	<i>97</i>	<i>174</i>		<i>58</i>				<i>58</i>			
							<i>128</i>	<i>99</i>	<i>222</i>		<i>74</i>			<i>74</i>				

SOLD FOR TAXES	VALUATIONS BY SCHOOL DISTRICTS AS EQUALIZED BY DEPARTMENT OF TALLATION						Tax including State Homestead	State Tax on Non-Homestead	SPECIAL TAXES	TOTAL TAXES	PAID	WHEN PAID	Number of Receipt	March Settlement 1959	June Settlement 1959	Penalty	November Settlement 1959	Penalty	Collections to First Monday in January 1960	Penalty	Delinquent on First Monday in January 1960	Total Delinquent Tax and Penalty	REMARKS
	District No.	District No.	District No.	District No.	District No.	District No.																	
	Rate	Rate	Rate	Rate	Rate	Rate																	

Selling Eastburn Addition.

Personal

Assessment Roll and Tax List of Real Property in the Town of Crooked Lake

Indicate Type of Property: R-Residential, C-Commercial, I-Industrial, U-Utility, F-Farm, L-Lakeshore, T-Timber, M-Mineral

Form 30

Table with columns: IN WHOSE NAME ASSESSED, TO WHOM TRANSFERRED, SUBDIVISION, DESCRIPTION OF PROPERTY, TRUE AND FULL VALUATIONS, ASSESSED VALUATIONS, and FINAL EQUALIZED VALUE.

Gilbert R. & Lois G. Sabon

John J. & Lucille L. Stewart

Cass County, Minnesota, for Taxes for the Year 1958.

Table with columns: SOLD FOR TAXES, VALUATIONS BY SCHOOL DISTRICTS AS EQUALIZED BY DEPARTMENT OF TAXATION, SPECIAL TAXES, TOTAL TAXES, PAID, WHEN PAID, Number of Receipt, March Settlement 1959, June Settlement 1959, Penalty, November Settlement 1959, Penalty, Collections to First Monday in January 1960, Penalty, Delinquent on First Monday in January 1960, Total Delinquent Tax and Penalty, REMARKS.

Personal

* Indicate Type of Property: R-Residential, C-Commercial, I-Industrial, U-Utility, F-Farm, L-Lakeshore, T-Timber, M-Mineral

Form 50

IN WHOSE NAME ASSESSED		TO WHOM TRANSFERRED		DESCRIPTION OF PROPERTY		TRUE AND FULL VALUATIONS				ASSESSED VALUATIONS				FINAL EQUALIZED VALUE		SOLD FOR TAXES	VALUATIONS BY SCHOOL DISTRICTS AS EQUALIZED BY DEPARTMENT OF TAXATION						SPECIAL TAXES	TOTAL TAXES	PAID	WHEN PAID	Number of Receipt	March Settlement 1959	June Settlement 1959	Penalty	November Settlement 1959	Penalty	Collections to First Monday in January 1960	Penalty	Delinquent on First Monday in January 1960	Total Delinquent Tax and Penalty	REMARKS			
SUBDIVISION	Sec. or Lot	Town or Block	Rng.	Number of Acres of Land	LAND Exclusive of Structures and Improvements	BUILDINGS and Other Structures	MACHINERY Permanently Attached to Real Estate	TOTAL True and Full Value	RURAL		ALL OTHER		MACHINERY Permanently Attached to Real Estate	TOTAL ASSESSED VALUE	Total Assessed Value as Equalized by the Board of Review		District No.	District No.	District No.	District No.	District No.	District No.																District No.	Tax Including State Homestead	State Tax on Non-Homestead
									Homestead Up to \$4,000 20%	Over \$4,000 and Non-Homestead 33 1/3%	Timber Land Class 3e 20%	Homestead Up to \$4,000 25%																												
Lea & Hedwig A. Schlemmer				21				30		10				10		1							10		228	06	234	1	PAID IN FULL	MAR 24 1959	6784			234						
Edmund & Ruth E. Rosenthal				22				30		10				10		2							10		228	06	234	2	PAID IN FULL	MAY 29 1959	12089			234						
Hulbert R. & Lore C. Sabin				23				30		10				10		3							10		228	06	234	3	PAID IN FULL	MAY 19 1959				234						
"				24				30		10				10		4							10		228	06	234	4	PAID IN FULL	MAY 19 1959	79012			702						
"				25				30		10				10		5							10		228	06	234	5	PAID IN FULL	MAY 19 1959				234						
"				26				30		10				10		6							10		228	06	234	6	PAID IN FULL	APR 6 1959	7041			234						
"				27				30		10				10		7							10		228	06	234	7	PAID IN FULL	MAY 19 1959				234						
"				28				30		10				10		8							10		228	06	234	8	PAID IN FULL	MAY 19 1959				234						
"				29				30		10				10		9							10		228	06	234	9	PAID IN FULL	MAY 19 1959				234						
"				30				30		10				10		10							10		228	06	234	10	PAID IN FULL	MAY 19 1959				234						
"				31				30		10				10		11							10		228	06	234	11	PAID IN FULL	MAY 19 1959				234						
"				32				30		10				10		12							10		228	06	234	12	PAID IN FULL	MAY 19 1959				234						
"				33				30		10				10		13							10		228	06	234	13	PAID IN FULL	MAY 19 1959				234						
"				34				24		8				8		14							8		184	06	190	14	PAID IN FULL	MAY 19 1959				190						
"				35				24		8				8		15							8		184	06	190	15	PAID IN FULL	MAY 19 1959				190						
"				36				24		8				8		16							8		184	06	190	16	PAID IN FULL	MAY 19 1959				190						
"				37				24		8				8		17							8		184	06	190	17	PAID IN FULL	MAY 19 1959				190						
"				38				24		8				8		18							8		184	06	190	18	PAID IN FULL	MAY 19 1959				190						
"				39				24		8				8		19							8		184	06	190	19	PAID IN FULL	MAY 19 1959				190						
"				40				24		8				8		20							8		184	06	190	20	PAID IN FULL	MAY 19 1959				190						
								558		186				186									186		4252	120	4372						4372							

Personal

