

Assessment & Tax List - 1954

Crooked Lake





TABULAR SCHEDULE OF VALUATIONS,  
LEVIED IN THE Town OF Crooked Lake

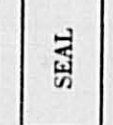
School District No.	VALUATION BY SCHOOL DISTRICTS				RATE OF STATE TAXES	RATE OF COUNTY TAXES										RATE OF TOWN TAXES										RATE OF
	Agri-cultural Lands	Non-Agri-cultural Lands	Personal Property	Total Value of all Property except Money and Credits	Total Rate of State Tax	Rev.	R. & B.	Wel-fare	Bonds and Int.	U. & C. Sky	Total Rate of County Tax	Rev.	R. & B.	Drag Tax	State Loan	Total Rate of Town Tax	Local	Spe-cial	State Loan	Defi-cien-cy	Tui-tion	Trans-porta-tion	E.O.			
C1	39524	18762	383 4925	63,594	11.393	28.11	14.91	50.19	11.47	2.	106.68	4.1	12.5	1.	2.5	20.1	1.25	28.5	1.5	5.5	1.5	5.5				
Assessed Value				Total																						
Homestead	11,354			11,354																						
Non-Homestead	46,932		5,308	52,240																						
Total	58,286		5,308	63,594																						

RATES AND TAXES  
COUNTY OF CASS, STATE OF MINNESOTA

SCHOOL TAXES										TAXES LEVIED															
LOCAL 1 MILL AND SPECIAL SCHOOL TAXES BY DISTRICTS										ALL OTHER TAXES															
LOCAL 1 MILL			SPECIAL			STATE LOAN				DEFICIENCY			TUITION			TRANSPORTATION			FUNDS			RATE		AMOUNTS	
61.5	192.24	3991	99768	113735	5986	21949	245429	State - Non-Homestead,			27248														
86.5	217.24	2369	118435	67508	3553	13028	204873	State - Homestead,			24992														
6360			218203			181243				9539			34977			450322									
Total School Taxes										450322															
Town Revenue,										26073															
Town Road and Bridge,										79481															
Town Drag,										6359															
Town State Loan,										15898															
Ave										127811															
School Local 1 Mill,										6360															
School Special,										218203															
School State Loan,										181243															
Deficiency										9539															
Tuition										34977															
Transportation										450322															
E.O.																									

Total Number of Acres 6781.92  
 State of Minnesota, } ss.  
 COUNTY OF CASS }  
 I, L. C. Peterson, Auditor of said County and State aforesaid, do hereby certify that the foregoing is a true and correct Schedule, showing the valuation of all the taxable property, in the Town of Crooked Lake, in said County, the several rates of Taxation and Totals of the several Tax Funds levied thereon for the year A. D. 1954.  
 Witness my hand and official seal, this 3rd day of January A. D. 1955  
L. C. Peterson County Auditor.  
 By Helga Bollen Deputy

Total Taxes Real Estate 11,916.94  
 Pers. Prop. 1170.32  
 Total 13,087.26



COLLECTIONS OF TAXES OF 1954

Town

OF Crooked Lake

CASS COUNTY, MINNESOTA

FUNDS	MARCH SETTLEMENT 1954	JUNE SETTLEMENT 1954	NOV. SETTLEMENT 1954	Amount Collected from Nov. 1953 to First Monday in Jan. 1954	REDUCTIONS	Total Reductions and Collected	BALANCE UNCOLLECTED	ADDITIONS	Total Uncollected to First Monday in January, 1954
State—Non-Homestead,	3288	16502	4211	251					
State—Homestead,	2544	15178	4662	235					
County Revenue,	18177	108566	33344	1679					
County Road and Bridge,	9652	57585	17686	891					
County Welfare,	32496	173843	59535	2789					
County Bond and Interest,	7425	44288	13606	685					
A. & B. sinking	1295	7724	2372	119					
Town Revenue,	2654	15935	4863	245					
Town Road and Bridge,	8692	48277	14827	747					
Town Drag,	647	3862	1186	60					
Town State Loan,									
Fire	1618	9655	2965	149					
School Local 1 Mill,	647	3862	1186	59					
School Special,	28034	114807	43131	2431					
School State Loan,									
Deficiency	18450	110072	33807	1703					
Tuition									
Transportation	971	5793	1780	89					
C. O.	3560	21242	6524	329					
	139564	777102	245685	12671					

	SCHOOL DISTRICT NO.	LOCAL 1 MILL	SPECIAL	STATE LOAN	Refinery Transport	C. O.	TOTALS
MARCH SETTLEMENT	G-FCI	173	4333		4940	200	953
	Na-FCI	474	23701		13510	711	2607
	Totals	647	28034		18450	971	3560
JUNE SETTLEMENT	G-FCI	3132	78303		89265	4698	17227
	Na-FCI	730	36504		20907	1095	4615
	Totals	3862	114807		110072	5793	21242
NOVEMBER SETTLEMENT	G-FCI	647	16179		18450	971	3559
	Na-FCI	539	26952		15362	809	2965
	Totals	1186	43131		33807	1780	6524
NOVEMBER to JANUARY	G-FCI	22	557		635	33	123
	Na-FCI	37	1874		1068	56	206
	Totals	59	2431		1703	89	329
ADDITIONS	School District No.						4611
	Totals						
REDUCTIONS	School District No.						
	Totals						





Assessment Roll and Tax List of Real Property in the Town of Crooked Lake, of Crooked Lake, Minnesota

Cass County, Minnesota, for Taxes for the Year 1954.

Table with columns: IN WHOSE NAME ASSESSED, TO WHOM TRANSFERRED, DESCRIPTION OF PROPERTY, TRUE AND FULL VALUATIONS, ASSESSED VALUATIONS, VALUATIONS BY SCHOOL DISTRICTS AS EQUALIZED BY DEPARTMENT OF TAXATION, TAXES, PAID, WHEN PAID, etc.

Vertical text on the right edge: The Narrows, Auditor's Plat of Lake Washburn, Otter Tail, Minnesota, Ross & Harris, and other names.

















Assessment Roll and Tax List of Real Property in the Town of Crooked Lake, Cass County, Minnesota, for Taxes for the Year 1954.

Cass County, Minnesota, for Taxes for the Year 1954.

Table with columns: IN WHOSE NAME ASSESSED, TO WHOM TRANSFERRED, DESCRIPTION OF PROPERTY, TRUE AND FULL VALUATIONS, ASSESSED VALUATIONS, VALUATIONS BY SCHOOL DISTRICTS AS EQUALIZED BY DEPARTMENT OF TAXATION, TAXES, PAID, WHEN PAID, Number of Receipt, March Settlement, June Settlement, November Settlement, Collections to First Monday in January 1956, Delinquent on First Monday in January 1956, Total Delinquent Tax and Penalty, REMARKS.

Sam Schultz
State of Minnesota
Gilbert R. & Lois C. Sabin
Edward & Ingeborg Nyström
State of Minnesota
Annast Bernard Meek
Gerald Todd
State of Minnesota
State of Minnesota
State of Minnesota

Table with columns: SUBDIVISION, Sec. of Lot, Town or Block, Ring, Number of Acres of Land, No. School District, Indicate Homestead, Indicate Agricultural, Indicate Type of Property, LAND EXCLUSIVE OF STRUCTURES AND IMPROVEMENTS, BUILDINGS AND OTHER STRUCTURES, MACHINERY PERMANENTLY ATTACHED TO REAL ESTATE, TOTAL TRUE AND FULL VALUE, RURAL, ALL OTHER, MACHINERY PERMANENTLY ATTACHED TO REAL ESTATE, TOTAL ASSESSED VALUE, Total Assessed Value as Equalized by the Board of Review, FINAL EQUALIZED VALUE.

Table with columns: SOLD FOR TAXES, District No., District Rate, District No., District Rate, District No., District Rate, District No., District Rate, District No., District Rate, Tax including State Homestead, State Tax on Non-Homestead, SPECIAL TAXES, TOTAL TAXES, PAID, WHEN PAID, Number of Receipt, March Settlement, June Settlement, November Settlement, Collections to First Monday in January 1956, Delinquent on First Monday in January 1956, Total Delinquent Tax and Penalty, REMARKS.

Maple Harrows
And for's Plat of Lake
Mashburn, Ontario
Rungles Bros's
Roosevelt Trails
ms. Ho. 64. 14

































Assessment Roll and Tax List of Real Property in the Town of Crookston Lake, \*Indicate Type of Property: R-Residential, C-Commercial, I-Industrial, U-Utility, F-Farm

Form 5CD (54) WILHELM-BAY COMPANY, MINNEAPOLIS

Table with columns: IN WHOSE NAME ASSESSED, TO WHOM TRANSFERRED, DESCRIPTION OF PROPERTY, TRUE AND FULL VALUATIONS (LAND, BUILDINGS, MACHINERY, TOTAL), ASSESSED VALUATIONS (RURAL, ALL OTHER, MACHINERY, TOTAL ASSESSED VALUE), FINAL EQUALIZED VALUE.

(Continued on next page)

Cass County, Minnesota, for Taxes for the Year 1954.

Table with columns: SOLD FOR TAXES, VALUATIONS BY SCHOOL DISTRICTS AS EQUALIZED BY DEPARTMENT OF TAXATION, Tax including State Homestead, State Tax on Non-Homestead, SPECIAL TAXES, TOTAL TAXES, PAID, WHEN PAID, Number of Receipt, March Settlement 1955, June Settlement 1955, Penalty, November Settlement 1955, Penalty, Collections to First Monday in January 1956, Penalty, Delinquent on First Monday in January 1956, Total Delinquent Tax and Penalty, REMARKS.

The Narrows And for's Plat of Lake Hoesevick's Tracts Anna Helgeth's Moosey's Lake

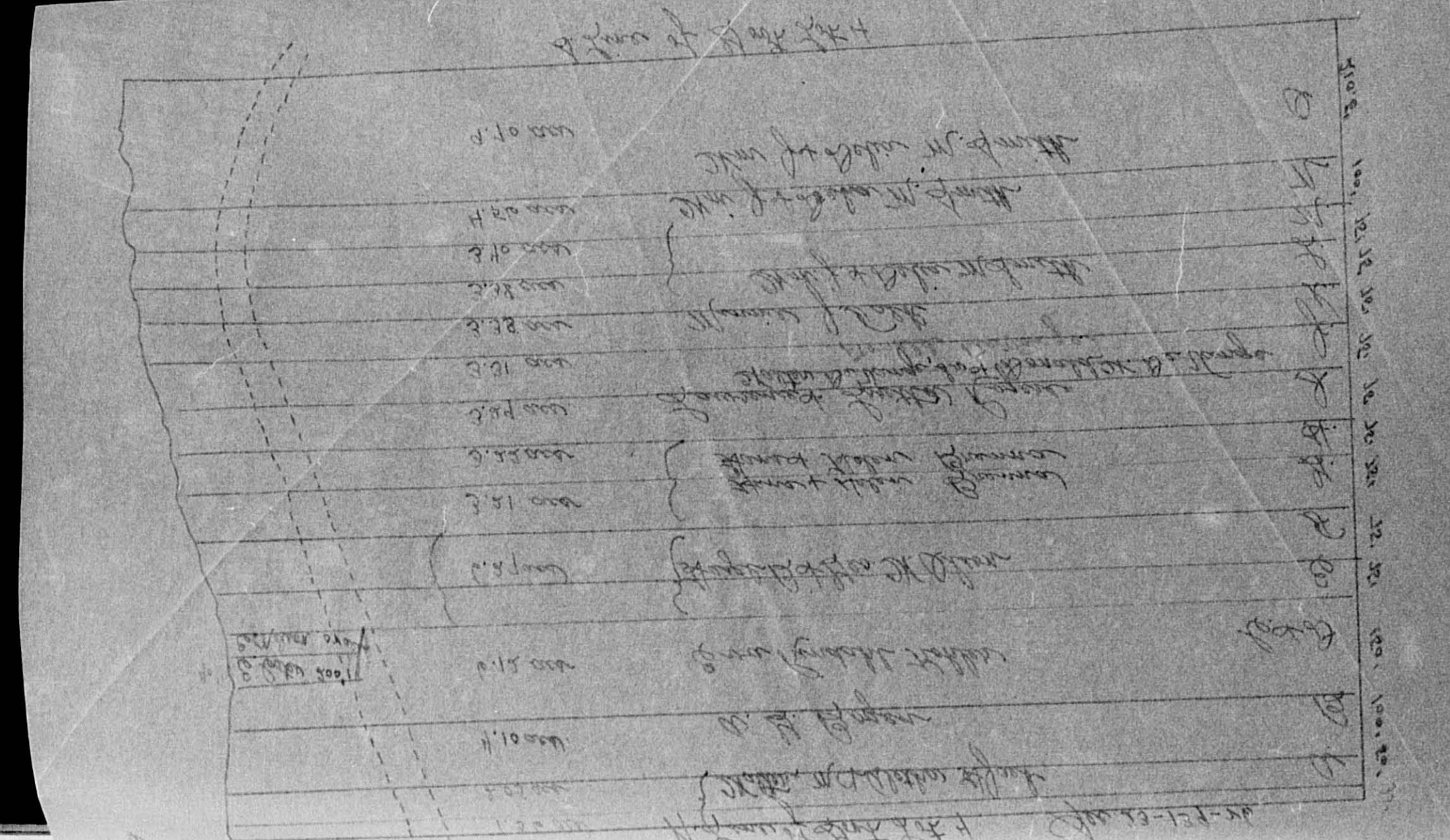




Assessment Roll and Tax List of Real Property in the Town of Brookfield, Minn.

\*Indicate Type of Property: R-Residential, C-Commercial, I-Industrial, U-Utility, F-Farm

Table with columns: IN WHOSE NAME ASSESSED, TO WHOM TRANSFERRED, DESCRIPTION OF PROPERTY, TRU AND FULL VALUATIONS, ASSESSED VALUATIONS, FINAL EQUALIZED VALUE.



Cass County, Minnesota, for Taxes for the Year 1954.

Table with columns: VALUATIONS BY SCHOOL DISTRICTS AS EQUALIZED BY DEPARTMENT OF TAXATION, TAXES, PAID, WHEN PAID, Number of Receipt, March Settlement 1955, June Settlement 1955, November Settlement 1955, Collections to First Monday in January 1956, Delinquent on First Monday in January 1956, Total Delinquent Tax and Penalty, REMARKS.

Vertical text on the right edge of the page, including 'The Harrows' and 'Auditor's Plat of Lake Washburn, October 1954'.























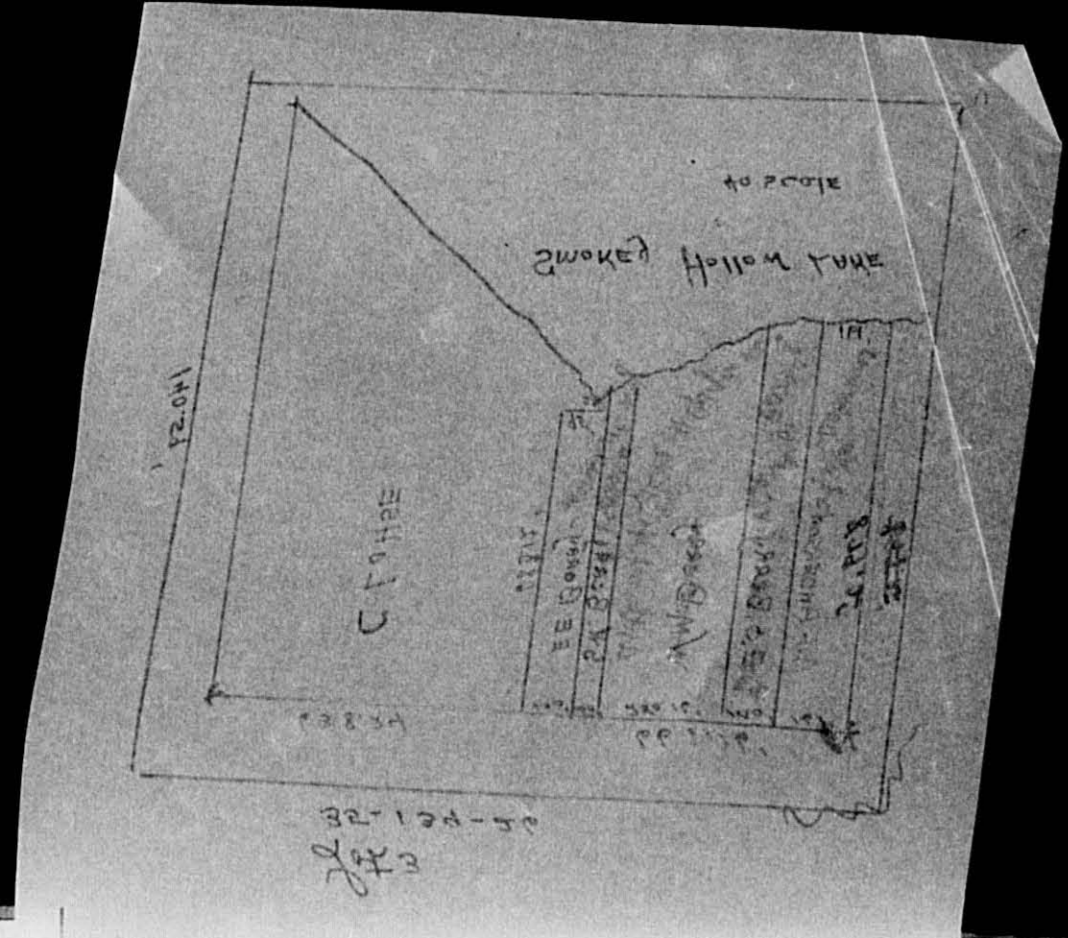








Assessment Roll and Tax List of Real Property in the town of Brookside Lake of Brookside Lake Cass County, Minnesota, for Taxes for the Year 1954.



\*Indicate Type of Property: R-Residential, C-Commercial, I-Industrial, U-Utility, F-Farm

Table with columns: IN WHOSE NAME ASSESSED, TO WHOM TRANSFERRED, DESCRIPTION OF PROPERTY, TRUE AND FULL VALUATIONS (RURAL, ALL OTHER, MACHINERY), VALUATIONS BY SCHOOL DISTRICTS AS EQUALIZED BY DEPARTMENT OF TAXATION, SOLD FOR TAXES, PAID, WHEN PAID, Number of Receipt, March Settlement 1955, June Settlement 1955, November Settlement 1955, Collections to First Monday in January 1956, Delinquent on First Monday in January 1956, Total Delinquent Tax and Penalty, REMARKS.

Handwritten names and addresses: Herbert J. Koppay, Mrs. D. Stiles, Anthony & Clara H. Casgrove, Margaret L. Green, Mrs. D. Pearl L. Stiles, W. Frank & Lulu J. Anderson, Gerald & Carol A. Berry, Wayne M. & Margaret D. Berry, Sidney & Ethel O. Berry, Emmett E. & Marian Berry, Clarence Lobse.

Vertical text on the right edge: Mike Harrows, Auditor's Plat of Lake, Washington State, Hoop & Proffitt, Pears Heights, Tower Field.









Assessment Roll and Tax List of Real Property in the Town of Crooked Lake, Minnesota

Form 5C (54) MILLER-DAVIS COMPANY, MINNEAPOLIS

\*Indicate Type of Property: R-Residential, C-Commercial, I-Industrial, U-Utility, F-Farm

Table with columns: IN WHOSE NAME ASSESSED, TO WHOM TRANSFERRED, SUBDIVISION, DESCRIPTION OF PROPERTY, TRUE AND FULL VALUATIONS, ASSESSED VALUATIONS, and FINAL EQUALIZED VALUE.

Cass County, Minnesota, for Taxes for the Year 1954.

Table with columns: SOLD FOR TAXES, VALUATIONS BY SCHOOL DISTRICTS AS EQUALIZED BY DEPARTMENT OF TAXATION, Tax including State Homestead, State Tax on Non-Homestead, SPECIAL TAXES, TOTAL TAXES, PAID, WHEN PAID, Number of Receipt, March Settlement 1955, June Settlement 1955, November Settlement 1955, Collections to First Monday in January 1956, Delinquent on First Monday in January 1956, Total Delinquent Tax and Penalty, REMARKS.

The Narrows

Roosevelt Soc

And for's Plat of Lake Washburn Orleans

Rowen F Washburn Lake

Indiana & Engle's Hosesville Trails

Wanda Holzhuts

Boosey Let Lake



















Assessment Roll and Tax List of Real Property in the Town of Down of Crookston Lake,  
\*Indicate Type of Property: R-Residential, C-Commercial, I-Industrial, U-Utility, F-Farm

Table with columns: IN WHOSE NAME ASSESSED, TO WHOM TRANSFERRED, SUBDIVISION, TRUE AND FULL VALUATIONS, ASSESSED VALUATIONS, FINAL EQUALIZED VALUE. Includes entries for Lee A. & Amanda E. Lindstrom, Arthur H. Christopherson, Denna Curry, Verle Rhoades & LeRoy Lote, Arthur H. & Eva Gillmer, Bertha Vaccaro, Odine & Lida Christopherson, Thomas & Inga Love, Erick & Sarah B. Hove, Debra & Fernice Rochekau, Norman O. & Alice E. Drolson, Jacob H. Carter, Bernande & Theresa Leach, Lawrence M. Chenevert & Fern Nelson, Robert W. & Grace M. Milbrath, Anna E. Larson, Guardian of Harold Larson, Beatrice H. Hamm, Dole E. & Vernon R. Herman.

Cass County, Minnesota, for Taxes for the Year 1954.

Table with columns: SOLD FOR TAXES, VALUATIONS BY SCHOOL DISTRICTS AS EQUALIZED BY DEPARTMENT OF TAXATION, Tax including State Homestead, State Tax on Non-Homestead, SPECIAL TAXES, TOTAL TAXES, PAID, WHEN PAID, Number of Receipt, March Settlement 1955, June Settlement 1955, Penalty, November Settlement 1955, Collections to First Monday in January 1956, Delinquent on First Monday in January 1956, Total Delinquent Tax and Penalty, REMARKS. Includes entries for 1-20 and 20 QULD FOR TAXES.

The Narrows  
Auntie's Flat of  
Lake Washburn Outlots  
Roosevelt  
Tingdala Bros. Roosevelt  
Tingdala Trails

Roosevelt So  
Tingdala Bros. Lake  
Roosevelt So  
Brown's Washburn Lake  
Addition  
Iovana Heights  
Roosevelt Lake  
Iovana Heights  
Roosevelt Lake



Assessment Roll and Tax List of Real Property in the Town of Brookfield Lake

\*Indicate Type of Property: R-Residential, C-Commercial, I-Industrial, U-Utility, F-Farm

Form 5C (54) MILLER-BAYNE COMPANY, MINNEAPOLIS

Table with columns: IN WHOSE NAME ASSESSED, TO WHOM TRANSFERRED, SUBDIVISION, DESCRIPTION OF PROPERTY, TRUE AND FULL VALUATIONS, ASSESSED VALUATIONS (RURAL, ALL OTHER), FINAL EQUALIZED VALUE.

Cass County, Minnesota, for Taxes for the Year 1954.

Table with columns: VALUATIONS BY SCHOOL DISTRICTS AS EQUALIZED BY DEPARTMENT OF TAXATION, TAX INCLUDING STATE HOMESTEAD, SPECIAL TAXES, TOTAL TAXES, PAID, WHEN PAID, Number of Receipt, March Settlement 1955, June Settlement 1955, Penalty, November Settlement 1955, Collections to First Monday in January 1956, Delinquent on First Monday in January 1956, Total Delinquent Tax and Penalty, REMARKS.

Vertical text on the left margin: The Narrows, And for's Plat of Lake Washburn Outlots, Triadale Bros. Roosevelt Trails

Vertical text on the right margin: Roosevelt Soo, Triadale Bros. Lake, Roosevelt Shores, Brown's Washburn Lake Addition, Iowa Heights, Roosevelt Lake

Assessment Roll and Tax List of Real Property in the Town of Crooked Lake, Cass County, Minnesota, for Taxes for the Year 1954.

\*Indicate Type of Property: R-Residential, C-Commercial, I-Industrial, U-Utility, F-Farm

Cass County, Minnesota, for Taxes for the Year 1954.

Table with columns: IN WHOSE NAME ASSESSED, TO WHOM TRANSFERRED, SUBDIVISION, TRUE AND FULL VALUATIONS (LAND, BUILDINGS, MACHINERY, TOTAL), ASSESSED VALUATIONS (RURAL, ALL OTHER), FINAL EQUALIZED VALUE.

Table with columns: VALUATIONS BY SCHOOL DISTRICTS AS EQUALIZED BY DEPARTMENT OF TAXATION, TAXES (SOLD FOR TAXES, District No., Rate, Mills), SPECIAL TAXES, TOTAL TAXES, PAID, WHEN PAID, Number of Receipt, March Settlement, June Settlement, November Settlement, Collections to First Monday in January 1956, Delinquent on First Monday in January 1956, Total Delinquent Tax and Penalty, REMARKS.

Auditor's Plat of The Narrows Lake Washburn Outlots

Roosevelt Soo, Triadale Bros. Roosevelt Lake Washburn Outlots, Roosevelt Shores, Brown's Washburn Lake Addition, Iwana Heights, Roosevelt Lake





Assessment Roll and Tax List of Real Property in the Town of Crooked Lake, Cass County, Minnesota, for Taxes for the Year 1954.

Cass County, Minnesota, for Taxes for the Year 1954.

Table with columns: IN WHOSE NAME ASSESSED, TO WHOM TRANSFERRED, DESCRIPTION OF PROPERTY, TRUE AND FULL VALUATIONS, ASSESSED VALUATIONS, VALUATIONS BY SCHOOL DISTRICTS AS EQUALIZED BY DEPARTMENT OF TAXATION, TAXES, PAID, WHEN PAID, Number of Receipt, March Settlement 1955, June Settlement 1955, November Settlement 1955, Collections to First Monday in January 1956, Delinquent on First Monday in January 1956, Total Delinquent Tax and Penalty, REMARKS.

Auditor's Plat of The Narrows Lake Washburn Outlots

Roosevelt Soc. Tingedale Bros. Lake Roosevelt Shores

Tingedale Bros. Roosevelt Trails

Brown Washburn Lake Iwanna Heights Roosevelt Lakes









Assessment Roll and Tax List of Real Property in the Town of Crooked Lake

\*Indicate Type of Property: R-Residential, C-Commercial, I-Industrial, U-Utility, F-Farm

Form 50 (54)

Table with columns: IN WHOSE NAME ASSESSED, TO WHOM TRANSFERRED, SUBDIVISION, TRUE AND FULL VALUATIONS (LAND, BUILDINGS, MACHINERY, TOTAL), ASSESSED VALUATIONS (RURAL, ALL OTHER, MACHINERY, TOTAL ASSESSED), FINAL EQUALIZED VALUE.

Cass County, Minnesota, for Taxes for the Year 1954.

Table with columns: VALUATIONS BY SCHOOL DISTRICTS AS EQUALIZED BY DEPARTMENT OF TAXATION, TAX INCLUDING STATE HOMESTEAD, SPECIAL TAXES, TOTAL TAXES, PAID, WHEN PAID, Number of Receipt, March Settlement, June Settlement, November Settlement, Collections to First Monday in January 1956, Delinquent on First Monday in January 1956, Total Delinquent Tax and Penalty, REMARKS.

Auditor's Plat of Lake Washburn Outlots, Roosevelt Bros. Addition, Iovena Heights, Roosevelt Lake

Roosevelt Soc, Roosevelt Bros. Addition, Brown's Washburn Lake Addition, Iovena Heights, Roosevelt Lake















Assessment Roll and Tax List of Real Property in the Town of Goodall Lake, Cass County, Minnesota, for Taxes for the Year 1954.

Cass County, Minnesota, for Taxes for the Year 1954.

\*Indicate Type of Property: R-Residential, C-Commercial, I-Industrial, U-Utility, F-Farm

Table with columns: IN WHOSE NAME ASSESSED, TO WHOM TRANSFERRED, DESCRIPTION OF PROPERTY, TRUE AND FULL VALUATIONS (RURAL, ALL OTHER, MACHINERY), ASSESSED VALUATIONS, VALUATIONS BY SCHOOL DISTRICTS, TAXES (SOLD FOR TAXES, District, State, SPECIAL, TOTAL), PAID, WHEN PAID, Number of Receipt, March Settlement, June Settlement, November Settlement, Collections to First Monday in January, Delinquent on First Monday in January, Total Delinquent Tax and Penalty, REMARKS.

Vertical text on the left margin: The Narrows, Roosevelt Sec, Auditors Plat of, Lake Washburn Outlots, Lake Washburn, Mingle Bros. Lake, Roosevelt Shores, Mingle Bros. Roosevelt, Mingle Trails, Iowa Heights, Red Lake Heights.

Vertical text on the right margin: Sunset Beach on, Roosevelt Lake, Plat of Outlot "A" of, Lake Washburn Addition, Browns Washburn Lake, Le Hog Lake by, Washburn Pines, 1954.











































































