

ASSESSMENT & TAX LIST

Crooked Lake

1949

List of Lands in the _____ of _____, County of _____, Minn., for the Year 19____, Which have Become Homesteads or Ceased to be Homesteads
 SINCE THE LAST REAL ESTATE ASSESSMENT DATE

Form 24 Miller-Davis Company, Minneapolis, State Form No. 67

LANDS BECOMING HOMESTEADS							LANDS CEASING TO BE HOMESTEADS								
NAME OF OWNER		School District	DESCRIPTION OF PROPERTY	Sec. or	Town or	Range	Number of Acres of Land	NAME OF OWNER		School District	DESCRIPTION OF PROPERTY	Sec. or	Town or	Range	Number of Acres of Land
Lands Becoming Homestead Since the 1948 Real Estate Assessment															
Name of Owner	Sch. Dist.		Description of Property Subdivision	Sec. or Lot	Town or Block	Range	No. of Acres								
<i>Byron Anderson</i>	<i>100</i>		<i>NE 1/4 - NE 1/4</i>	<i>15</i>	<i>139</i>	<i>26</i>	<i>40</i>								
<i>Byron Anderson</i>	<i>100</i>		<i>NE 1/4 - NE 1/4</i>	<i>15</i>	<i>139</i>	<i>26</i>	<i>40</i>								
<i>Norman Nelson</i>			<i>Russell Trail</i>	<i>12</i>	<i>12</i>										
				<i>5</i>	<i>13</i>										
<i>A. J. Winterowd</i>			<i>1/2</i>	<i>32</i>	<i>139</i>	<i>26</i>									
			<i>1/2</i>	<i>33</i>											
			<i>1/2 of SW 1/4</i>	<i>33</i>											
			<i>1/2 of NW 1/4</i>	<i>33</i>											
			<i>1/2 of NE 1/4 + part of Lot 1</i>	<i>33</i>											
			<i>1/2 of NW less E. 235'</i>	<i>34</i>											
<i>W. L. + Nelsa Nelson</i>			<i>Quadr. A. less E. 92' X 79'</i>		<i>Louana Heights</i>										
<i>E. C. Groth</i>			<i>S. 800' of lot 3 sec 34 (except 2 cabins #416)</i>												
<i>Clark Hamilton</i>			<i>Russell Trail Lots 18 + 19 Block 13</i>												

Assessment of T

NAME OF OWNER

Treasurer's Office, Cass County, Minnesota

RECEIVED this, the first Monday (being the 2 day) of January, A. D. 1950, of L. C. Peterson, Auditor of said County, Minnesota, the Tax List of all Taxable Real and Personal Property in the Town of Crooked Lake in said County for the year A. D. 1949, as specified above and amounting to 100 Dollars

Paul S Jewell County Treasurer. E.S.P.

Auditor's Office, Cass County, Minnesota

I, Auditor of said County, and State of Minnesota, do hereby certify that the following is a correct list of the Taxes levied on the Real and Personal Property in the of for the year 1949.

WITNESS my hand and official seal, the day of 1950.

(SEAL) County Auditor.

Office of County Treasurer, Cass County, Minnesota

To L. C. Peterson, County Auditor:

Sir:—I herewith return to you the Tax List for the Town of Crooked Lake in said County for the year 1949, heretofore received from you. I certify that I have compared the same with the duplicate receipts in your office, and have written opposite the amount of each tax so receipted the words "First Quarter Paid", "Second Quarter Paid", "Third Quarter Paid" or "Paid in full" as the case may be, and the number of my receipt given in discharge of said tax, and each tract or lot of real property against which the taxes remain unpaid is delinquent for said year.

Yours respectfully, Paul S Jewell County Treasurer. E.S.P.

Auditor's Office, Cass County, Minnesota

I hereby certify that on the first Monday in January 1951, I received of County Treasurer, the Tax List of the of in said County for the year 1949; that I have compared the said list with the Statements receipted for by said Treasurer, which are on file in my office, and that each tract or lot of real property therein against which the taxes, or any part thereof, remains unpaid are delinquent for said year.

(SEAL) County Auditor.

Assessment Roll and Tax List of Real Property in the Town of Crooked Lake,

Form 50 - WILLIAM BLISS COMPANY, MINNEAPOLIS

IN WHOSE NAME ASSESSED	TO WHOM TRANSFERRED	DESCRIPTION OF PROPERTY				No. School District	Indicate Homestead Yes or No	Indicate Agricultural Yes or No	TRUE AND FULL VALUATIONS				ASSESSED VALUATIONS					FINAL EQUALIZED VALUE			
		Subdivision	Sec. of Lot	Town or Block	Rng.				Number of Acres of Land	LAND Exclusive of Structures and Improvements	BUILDINGS and Other Structures	MACHINERY Permanently Attached to Real Estate	TOTAL True and Full Value	RURAL		ALL OTHER			MACHINERY Permanently Attached to Real Estate	TOTAL ASSESSED VALUE	Total Assessed Value as Equalized by the Board of Review
														Up to \$4,000 20%	Over \$4,000 and Non-Homestead 33 1/3%	Homestead Up to \$4,000 25%	Over \$4,000 and Non-Homestead 40%				
Lenn Schultz	State of Minnesota	1 NE 1/4 of NE 1/4	10	139	26	40		Yes													
Bert & E.R. Sabin & Lons Dale		3 SW 1/4 of NE 1/4				40		No													
G.R. & Lois Clare Sabin		4 SE 1/4 of NE 1/4				40		Yes													
State of Minnesota		6 NE 1/4 of NW 1/4				40		No													
Anna & Bernard Meek		7 NW 1/4 of NW 1/4				40		No													
Lloyd A. Brown		8 SW 1/4 of NW 1/4				40		No													
State of Minnesota		9 SE 1/4 of NW 1/4																			
State of Minnesota		11 NE 1/4 of SW 1/4																			
Lloyd A. Brown		12 NW 1/4 of SW 1/4				40		No													
"		13 SW 1/4 of SW 1/4				40		No													
E. J. Andberg		14 SE 1/4 of SW 1/4				40		No													
State of Minnesota		16 NE 1/4 of SE 1/4				40		No													
Bert & E.R. Sabin & Lons Dale	State of Minnesota	17 NW 1/4 of SE 1/4				40		No													
E. J. Andberg		18 SW 1/4 of SE 1/4				40		No													
State of Minnesota		19 SE 1/4 of SE 1/4																			
		20																			

440-

Cass County, Minnesota, for Taxes for the Year 1949.

SOLD FOR TAXES	VALUATIONS BY SCHOOL DISTRICTS AS EQUALIZED BY DEPARTMENT OF TAXATION						Tax including State Homestead	State Tax on Non-Homestead	SPECIAL TAXES	TOTAL TAXES	PAID	WHEN PAID	Number of Receipt	March Settlement 1950	June Settlement 1950	Penalty	November Settlement 1950	Penalty	Collections to First Monday in January 1951	Penalty	Delinquent on First Monday in January 1951	Total Delinquent Tax and Penalty	REMARKS
	District No.	District No.	District No.	District No.	District No.	District No.																	
	Rate	Rate	Rate	Rate	Rate	Rate																	
1							29.86		29.86		PAID IN FULL FEB 9 1950	1510		2986									
2																							
3							9.62	22	9.84		PAID IN FULL OCT 31 1950	14016					984	39					
4							131.30		131.30		PAID IN FULL MAY 15 1950	634		131.30									
5																							
6																							
7							14.32	32	14.64												14.64	1610	
8							14.32	32	14.64												14.64		
9																							
10																							
11																							
12							14.32	32	14.64												14.64		
13							14.32	32	14.64												14.64		
14							14.32	32	14.64												14.64		
15																							
16							14.32	32	14.64												14.64	1610	
17							9.62	22	9.84		Forfeited											9.84 Abx Cancelled	
18							14.32	32	14.64												14.64		
19																							
20																							
							280.64	268	283.32					2986	131.30		984				10248	9.84	

H 788
2H 534
1378

The Harrows
Washington Outlook
Lumber Rights
Rosevelt Trails

Assessment Roll and Tax List of Real Property in the Town of Crooked Lake

Cass County, Minnesota, for Taxes for the Year 1949.

Form 50

Table with columns: IN WHOSE NAME ASSESSED, TO WHOM TRANSFERRED, DESCRIPTION OF PROPERTY, TRUE AND FULL VALUATIONS, ASSESSED VALUATIONS, VALUATIONS BY SCHOOL DISTRICTS AS EQUALIZED BY DEPARTMENT OF TAXATION, TAXES, PAID, WHEN PAID, etc.

Assessment Roll and Tax List of Real Property in the Town of Crooked Lake,

Cass County, Minnesota, for Taxes for the Year 1949.

IN WHOSE NAME ASSESSED	TO WHOM TRANSFERRED	DESCRIPTION OF PROPERTY				TRUE AND FULL VALUATIONS				ASSESSED VALUATIONS					FINAL EQUALIZED VALUE	SOLD FOR TAXES	VALUATIONS BY SCHOOL DISTRICTS AS EQUALIZED BY DEPARTMENT OF TAXATION						SPECIAL TAXES	TOTAL TAXES	PAID	WHEN PAID	Number of Receipt	March Settlement 1950	June Settlement 1950	Penalty	November Settlement 1950	Penalty	Collections to First Monday in January 1951	Penalty	Delinquent on First Monday in January 1951	Total Delinquent Tax and Penalty	REMARKS																	
		Subdivision	Sec. or Lot	Town or Block	Rng.	Number of Acres of Land		Machinery Permanently Attached to Real Estate	TOTAL True and Full Value	RURAL		ALL OTHER		Machinery Permanently Attached to Real Estate			TOTAL ASSESSED VALUE	Total Assessed Value as Equalized by the Board of Review	District No.	District No.	District No.	District No.																District No.	District No.															
						Acres	100ths			Homestead Up to \$4,000 20%	Over \$4,000 and Non-Homestead 33 1/3%	Homestead Up to \$4,000 25%	Over \$4,000 and Non-Homestead 40%																											Rate	Rate	Rate	Rate	Rate	Rate									
James & Mary R. Hoffman		1	Lot 6	17139	26	50.98	2m	Yes																																														
Larry & Ed. Adams		2	Lot 5			33.56		No																																														
		3																																																				
		4	SE 1/4 of NW 1/4																																																			
		5																																																				
		6																																																				
		7	NW 1/4 of NW 1/4																																																			
		8																																																				
Glen & Patricia J. Mechalke		9	Lot 4			40.69		No																																														
		10																																																				
		11	NE 1/4 of SW 1/4																																																			
Eugene O. & Anne J. Dagne		12	Lot 3			21.13		No																																														
James Kitchin		13	SW 1/4 of SW 1/4			40		"																																														
Loranz R. Aurandt		14	SE 1/4 of SW 1/4 less 100' x E 100'			34.17		"																																														
Leo E. & Selma R. Brown		15	S 100' x E 100' of SE 1/4 of SW 1/4			5.83		"																																														
State of Minnesota		16	NE 1/4 of SE 1/4					"																																														
George & Sophie Munkow		17	NW 1/4 of SE 1/4			40		"																																														
		18	SW 1/4 of SE 1/4					"																																														
		19	Lot 7			33.75		"																																														
		20						"																																														

The Harrows, Ashburn Outlooks, Ingalls Press, Rosevelt Trails, Iowa Heights, Rosevelt Ind.

Assessment Roll and Tax List of Real Property in the Town of Crooked Lake

Form 50 - MILLER & COMPANY, MINNEAPOLIS

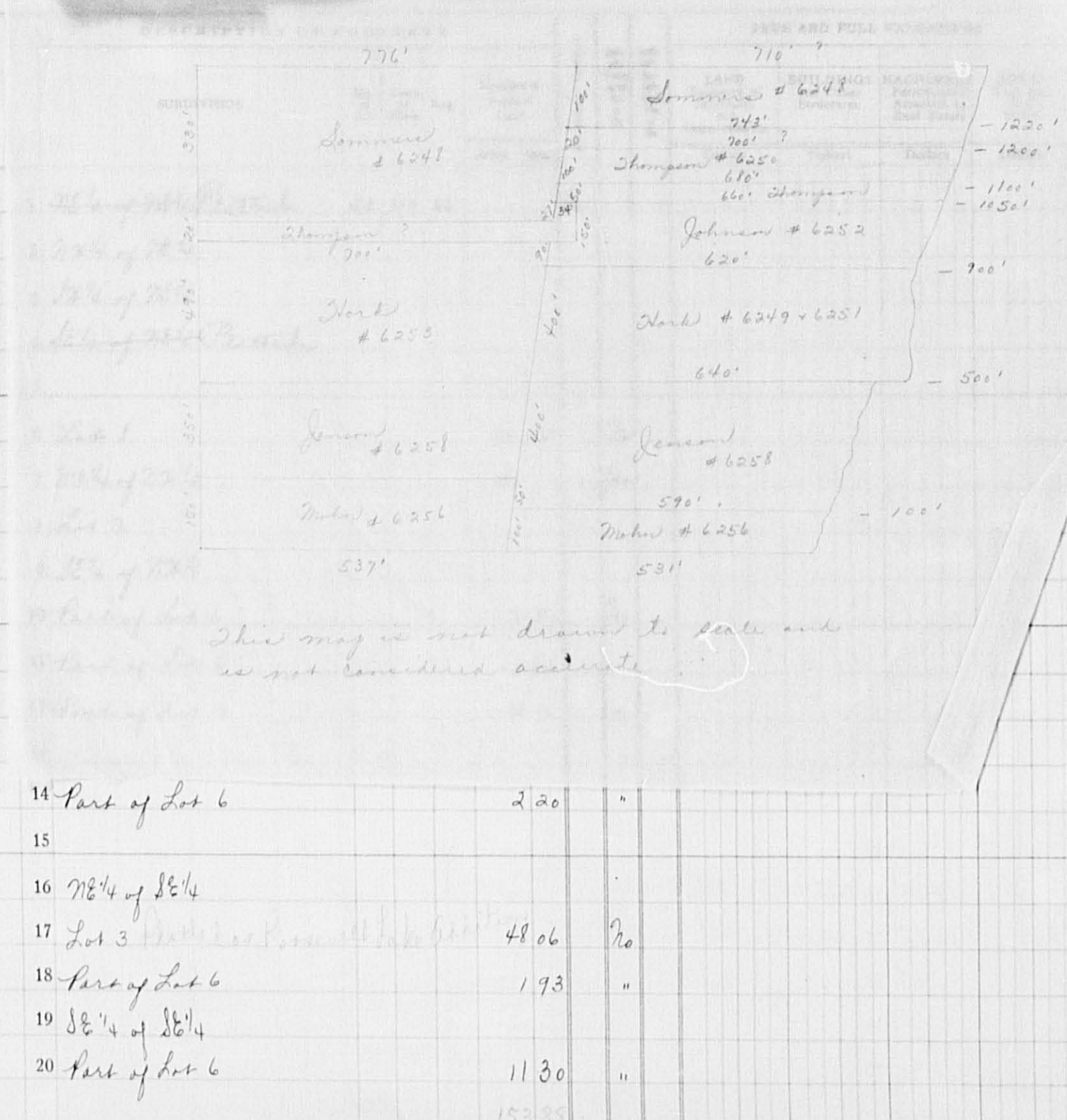
Table with columns: IN WHOSE NAME ASSESSED, TO WHOM TRANSFERRED, SUBDIVISION, TRUE AND FULL VALUATIONS, ASSESSED VALUATIONS, FINAL EQUALIZED VALUE. Includes entries for Frank W. Lamphere, Mark L. Lamphere, Clifford L. + Pearl Shon, etc.

Cass County, Minnesota, for Taxes for the Year 1949.

Table with columns: SOLD FOR TAXES, VALUATIONS BY SCHOOL DISTRICTS AS EQUALIZED BY DEPARTMENT OF TAXATION, Tax including State Homestead, SPECIAL TAXES, TOTAL TAXES, PAID, WHEN PAID, Number of Receipt, March Settlement 1950, June Settlement 1950, November Settlement 1950, Collections to First Monday in January 1951, Delinquent on First Monday in January 1951, Total Delinquent Tax and Penalty, REMARKS. Includes entries for 1, 2, 3, 4, 5, 6, 7, 8, 9, 10, 11, 12, 13, 14, 15, 16, 17, 18, 19, 20.

Form 5C

IN WHOSE NAME ASSESSED TO WHOM TRANSFERRED



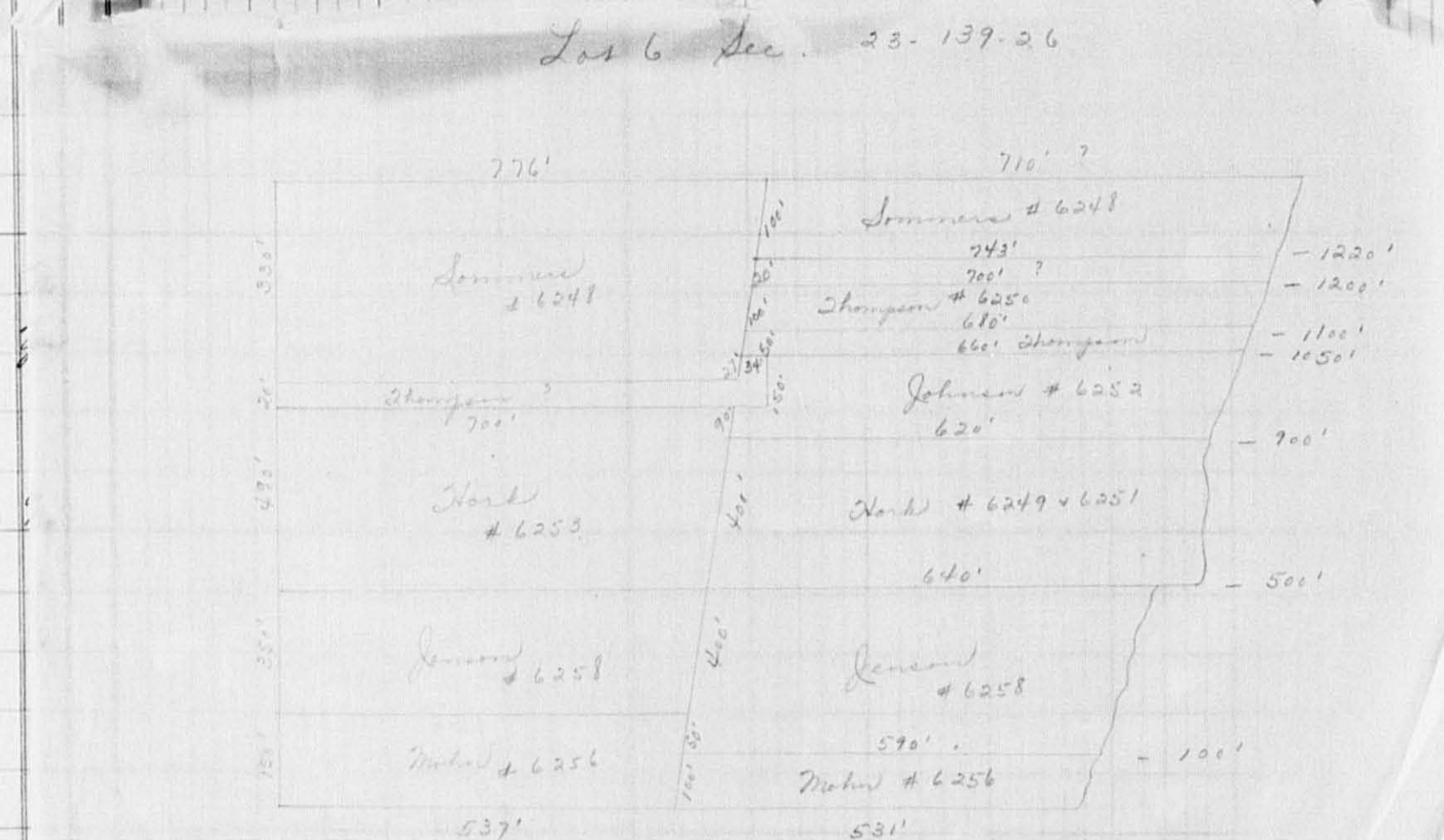
ASSESSED VALUATIONS							FINAL EQUALIZED VALUE
RURAL	ALL OTHER		MACHINERY	TOTAL ASSESSED VALUE		Total Assessed Value as Equalized by the Board of Review	
Homestead to \$4,000 20%	Over \$4,000 and Non-Homestead 33 1/8%	Homestead Up to \$4,000 25%	Over \$4,000 and Non-Homestead 40%	Permanently Attached to Real Estate 33 1/8%			Dollars

SOLD FOR TAXES	VALUATIONS BY SCHOOL DISTRICTS AS EQUALIZED BY DEPARTMENT OF TAXATION						Tax including State Homestead	State Tax on Non-Homestead	SPECIAL TAXES	TOTAL TAXES	PAID	WHEN PAID	Number of Receipt	March Settlement 1950	June Settlement 1950	Penalty	November Settlement 1950	Penalty	Collections to First Monday in January 1951	Penalty	Delinquent on First Monday in January 1951	Total Delinquent Tax and Penalty	REMARKS	
	District No. 1	District No. 2	District No. 3	District No. 4	District No. 5	District No. 6																		
1																								
2																								
3																								
4																								
5																								
6	63						12.88	28		13.16	6 PAID IN FULL MAY 22 1950 6925											1316		
7	21.88						18.00			18.00	2nd Half Paid OCT 17 1950 12812											900	900	
8											1st Half Paid MAY 31 1950 9445													
9																								
10	PAID FOR TAXES 110						22.50	50		23.00	10 PAID IN FULL SEP 1 1950 12086											2300	58	
11	62						12.68	28		12.96	11 PAID IN FULL APR 12 1950 4649											1296		
12	H 170 200						24.54 40.90	92		24.54 48.82	Balance Paid OCT 4 1950 12423											2100	2082	Prof. W. # 95522 7-21-51 17.28 Abated
13																								
14	20						4.10	10		4.20	14 PAID IN FULL MAY 5 1950 5282											420		
15																								
16																								
17	95						19.42	44		19.86	Joint. Ad. MAY 22 1950 6820											1489	40	joint pd. by 1st party
18	65						13.30	30		13.60	Balance paid OCT 7 1950 12584											1360		
19																								
20	169						34.56	78		35.34	18 PAID IN FULL MAY 22 1950 6926											1767		1767 1944
	H 24 784 872						178.34	360		181.94	20 1st Half Paid MAY 9 1950 5435											9656	6771	

Assessment Roll and Tax List of Real Property in the Town of Crooked Lake

Form 50 - MILLER BROS. COMPANY, MINNEAPOLIS

Table with columns: IN WHOSE NAME ASSESSED, TO WHOM TRANSFERRED, DESCRIPTION OF PROPERTY, TRUE AND FULL VALUATIONS, ASSESSED VALUATIONS, VALUATIONS BY SCHOOL DISTRICTS AS EQUALIZED BY DEPARTMENT OF TAXATION, TAXES, PAID, WHEN PAID, Number of Receipt, March Settlement, June Settlement, Penalty, November Settlement, Collections to First Monday in January, Delinquent on First Monday in January, Total Delinquent Tax and Penalty, REMARKS.



Handwritten notes: 'Wright', 'H'

Handwritten names and addresses: Ray & Alice J. Schimmel, Clyde Raven, State of Minnesota, Sigurd Bogens, Allen & Ruby Sommers, Larry Hork, Peter C. & Selma O. Thompson, Victor E. & Edna O. Johnson, O. State of Minnesota, O. George & Leonard A. Bogen Company, Sigvald & Bertha Mohr, O. State of Minnesota, John Frederick Jensen

Handwritten note: 2082 Ref. W. # 95522 7-21-51/1728 17.28 Abated

Handwritten note: 1489 40

Handwritten note: 1767 1974

Vertical text on the right edge: The Narrows, Minnesota Outlets, Roseville Trails, Iremora Heights, Roseville Trails

Assessment Roll and Tax List of Real Property in the Town of Crooked Lake,

Cass County, Minnesota, for Taxes for the Year 1949.

FORM 50 - MILLER-DAY COMPANY, MINNEAPOLIS

Table with columns: IN WHOSE NAME ASSESSED, TO WHOM TRANSFERRED, DESCRIPTION OF PROPERTY, TRUE AND FULL VALUATIONS, ASSESSED VALUATIONS, FINAL EQUALIZED VALUE, VALUATIONS BY SCHOOL DISTRICTS AS EQUALIZED BY DEPARTMENT OF TAXATION, TAXES, PAID, WHEN PAID, Number of Receipt, March Settlement 1950, June Settlement 1950, Penalty, November Settlement 1950, Collections to First Monday in January 1951, Delinquent on First Monday in January 1951, Total Delinquent Tax and Penalty, REMARKS.

The Narrows
Ashburn Outlook
Hullberg's list of Lake
Roosevelt pros.
Roosevelt trails
Iovanna Heights
Roosevelt Lake

Assessment Roll and Tax List of Real Property in the Town of Crooked Lake

Table with columns: IN WHOSE NAME ASSESSED, TO WHOM TRANSFERRED, SUBDIVISION, Description of Property, TRUE AND FULL VALUATIONS, ASSESSED VALUATIONS, FINAL EQUALIZED VALUE.

Cass County, Minnesota, for Taxes for the Year 1949.

Table with columns: SOLD FOR TAXES, VALUATIONS BY SCHOOL DISTRICTS AS EQUALIZED BY DEPARTMENT OF TAXATION, Tax including State Homestead, State Tax on Non-Homestead, SPECIAL TAXES, TOTAL TAXES, PAID, WHEN PAID, Number of Receipt, March Settlement 1950, June Settlement 1950, November Settlement 1950, Collections to First Monday in January 1951, Delinquent on First Monday in January 1951, Total Delinquent Tax and Penalty, REMARKS.

Roosevelt Soc, Washburn Outlets, Iowana Heights, Roosevelt Lake

The Narrows

IN WHOSE NAME ASSESSED	TO WHOM TRANSFERRED	DESCRIPTION OF PROPERTY				TRUE AND FULL VALUATIONS										FINAL EQUALIZED VALUE	
		SUBDIVISION	Sec. of Lot	Town or Block	Number of Acres of Land	LAND Exclusive of Structures and Improvements	BUILDINGS and Other Structures	MACHINERY Permanently Attached to Real Estate	TOTAL True and Full Value	RURAL		ALL OTHER		MACHINERY Permanently Attached to Real Estate	TOTAL ASSESSED VALUE		Total Assessed Value as Equalized by the Board of Review
										Homestead Up to \$4,000 20%	Over \$4,000 and Non-Homestead 33 1/3%	Homestead Up to \$4,000 25%	Over \$4,000 and Non-Homestead 40%				
Board of Education, Evangelical Luth.		E. 1 acre of	10	2	200	Exempt											
Martin & Martha Renning				13	No												
Wm. John & Louise L. Busch				2	W. 175' x 7.250' of												
		1/2 of		3													
Arthur C. Johnson		1/2 of		3													
Narrows Community Church		W. 175' x 7.250' of		2	(new)	Exempt											

Cass County, Minnesota, for Taxes for the Year 1949.

SOLD FOR TAXES	VALUATIONS BY SCHOOL DISTRICTS AS EQUALIZED BY DEPARTMENT OF TAXATION						Tax Including State Homestead	State Tax on Non-Homestead	SPECIAL TAXES	TOTAL TAXES	PAID	WHEN PAID	Number of Receipt	March Settlement 1950	June Settlement 1950	November Settlement 1950	Penalty	Collections to First Monday in January 1951	Penalty	Delinquent on First Monday in January 1951	Total Delinquent Tax and Penalty	REMARKS	
	District No.	District No.	District No.	District No.	District No.	District No.																	
	Rate	Rate	Rate	Rate	Rate	Rate																	
1																							
2							57.08	1.20	58.28														
3							53.34	60.00	53.94														
4							4.38		4.38														
5							4.38		4.38														
6																							
7																							
8																							
9																							
10																							
11																							
12																							
13																							
14																							
15																							
16																							
17																							
18																							
19																							
20																							

Roosevelt Soc. Washburn Children. IOWA RIGHTS. ROOSEVELT TAX.

A.

S. Line of Lot 4 Sec. 23 T. 39-26 of Crooked Lake

FOURTH SC. MILLER BATH COMPANY, MINNEAPOLIS

IN WHOSE NAME ASSESSED TO WHOM T

ASSESSED VALUATIONS					Total Assessed Value as Equalized by the Board of Review	FINAL EQUALIZED VALUE
ALL OTHER	Over \$4,000 and Non-Homestead 40%	MACHINERY Permanently Attached to Real Estate 33 1/3%	TOTAL ASSESSED VALUE			
Dollars	Dollars	Dollars	Dollars		Dollars	

1.06 ac.	Hester M. & Elizabeth D. Jalk					
3.05 ac.						
4.10 ac.	A. B. Rogent					
6.12 ac.	Eva Rindahl Kohler					
6.27 ac.	Hester M. & Hazel B. Olson					
3.21 ac.						
3.22 ac.	Burton L. & Emma Hanna					
3.29 ac.	Lawrence & Lauretta Rogent					
3.31 ac.	Oliver Arnold					
3.35 ac.	Minnie L. Jalk					
3.31 ac.	A. B. Rogent					
3.40 ac.						
4.56 ac.	Wm. J. & Selma M. Smith					
9.70 ac.	Nathaniel & Dorothy Hedberg					

S. Line of Lot 4

Board of Education, Inorganized
 Martin & Martha Romm
 Wm. John & Louisa L. B.
 Arthur C. Johnson
 Narrows Community Ch.

Cass County, Minnesota, for Taxes for the Year 1949.

SOLD FOR TAXES	VALUATIONS BY SCHOOL DISTRICTS AS EQUALIZED BY DEPARTMENT OF TAXATION						Tax Including State Homestead Mills	State Tax on Non-Homestead Mills	SPECIAL TAXES	TOTAL TAXES	PAID	WHEN PAID	Number of Receipt	March Settlement 1950	June Settlement 1950	Penalty	November Settlement 1950	Penalty	Collections to First Monday in January 1951	Penalty	Delinquent on First Monday in January 1951	Total Delinquent Tax and Penalty	REMARKS
	District No.	District No.	District No.	District No.	District No.	District No.																	
1																							
2							57.08	1.20		58.28													
3							53.34	60.00		53.94													
4							4.38			4.38													
5							4.38			4.38													
6																							
7																							
8																							
9																							
10																							
11																							
12																							
13																							
14																							
15																							
16																							
17																							
18																							
19																							
20							119.18	1.80		120.98													

Handwritten notes: 150, 593, 543

Handwritten notes: 5394, 3653, 3051

Vertical text on the right edge: Roosevelt Lake, Iwana Heights, Roosevelt Falls, Ingate Pass, Lake Superior, Harbor Outlets

Assessment Roll and Tax List of Real Property in the Town of Crooked Lake

FORM 50 WILSON-JAY COMPANY, MINNEAPOLIS

IN WHOSE NAME ASSESSED		TO WHOM TRANSFERRED		DESCRIPTION OF PROPERTY				TRUE AND FULL VALUATIONS					ASSESSED VALUATIONS					FINAL EQUALIZED VALUE
No. School District	Indicate Homestead Yes or No	Indicate Agricultural Yes or No	Acres	100ths	LAND Exclusive of Structures and Improvements	BUILDINGS and Other Structures	MACHINERY Permanently Attached to Real Estate	TOTAL True and Full Value	RURAL		ALL OTHER		MACHINERY Permanently Attached to Real Estate	TOTAL ASSESSED VALUE	Total Assessed Value as Equalized by the Board of Review	Dollars		
									Homestead Up to \$4,000 20%	Over \$4,000 and Non-Homestead 33 1/3%	Homestead Up to \$4,000 25%	Over \$4,000 and Non-Homestead 40%						
									Dollars	Dollars	Dollars	Dollars	Dollars	Dollars	Dollars	Dollars		

Arditor's Plat of Lake Washburn Outlots

The Narrows

Cass County, Minnesota, for Taxes for the Year 1949.

SOLD FOR TAXES	VALUATIONS BY SCHOOL DISTRICTS AS EQUALIZED BY DEPARTMENT OF TAXATION						Tax including State Homestead	State Tax on Non-Homestead	SPECIAL TAXES	TOTAL TAXES	PAID	WHEN PAID	Number of Receipt	March Settlement 1950	June Settlement 1950	November Settlement 1950	Penalty	Collections to First Monday in January 1951	Penalty	Delinquent on First Monday in January 1951	Total Delinquent Tax and Penalty	REMARKS
	District No.	District No.	District No.	District No.	District No.	District No.																

Roosevelt Soc.

Inglis Pros. Late Roosevelt Acres

Inglis Pros. Late Roosevelt Tracts

Iwana Heights

Roosevelt Lake

Assessment Roll and Tax List of Real Property in the Lower of Crooked Lake

Handwritten notes:
All of this
part of the
of the
Block 2 + 3
23 to 24

IN WHOSE NAME ASSESSED	TO WHOM TRANSFERRED	DESCRIPTION OF PROPERTY			TRUE AND FULL VALUATIONS					ASSESSED VALUATIONS					FINAL EQUALIZED VALUE		
		Sec. of Lot	Town or Block	Rng.	Number of Acres of Land	LAND Exclusive of Structures and Improvements	BUILDINGS and Other Structures	MACHINERY Permanently Attached to Real Estate	TOTAL True and Full Value	RURAL		ALL OTHER		MACHINERY Permanently Attached to Real Estate		TOTAL ASSESSED VALUE	Total Assessed Value as Equalized by the Board of Review
										Acres	100ths	Homestead Up to \$4,000 20%	Over \$4,000 and Non-Homestead 33 1/3%				
	<i>Singdale Bros. Roosevelt</i>																
	<i>Block 1, Lots 1-38 Ave., Blk 2 + 3 in Buleck Dig</i>																
	<i>Doyd Patros</i>	2	39	2													
	<i>Lake Shore Improvement Co.</i>	3	40														
	<i>"</i>	4	41														
	<i>Jerome M. + Pearl S. Juce</i>	5	42														
	<i>Jerome Juce</i>	6	43														
	<i>Jerome M. + Pearl S. Juce</i>	7	44														
	<i>Glorie Cunningham + Minnie Nelson</i>	8	45														
	<i>Edwin T. + Edna K. Smith</i>	9	1	4													
	<i>"</i>	10	2														
	<i>"</i>	11	3														
	<i>"</i>	12	4														
	<i>"</i>	13	5														
	<i>"</i>	14	6														
	<i>Harvey C. + Anna A. Shoemert</i>	15	7														
	<i>"</i>	16	8														
	<i>Stephen E. + Mable L. LaGrange</i>	17	9														
	<i>Lake Shore Improvement Co.</i>	18	10														
	<i>Dorothy + Gordon J. Carlson</i>	19	11														
	<i>Lena Duffey</i>	20	12														

Cass County, Minnesota, for Taxes for the Year 1949.

SOLD FOR TAXES	VALUATIONS BY SCHOOL DISTRICTS AS EQUALIZED BY DEPARTMENT OF TAXATION						Tax including State Homestead	State Tax on Non-Homestead	SPECIAL TAXES	TOTAL TAXES	PAID	WHEN PAID	Number of Receipt	March Settlement 1950	June Settlement 1950	Penalty	November Settlement 1950	Penalty	Collections to First Monday in January 1951	Penalty	Delinquent on First Monday in January 1951	Total Delinquent Tax and Penalty	REMARKS
	District No.	District No.	District No.	District No.	District No.	District No.																	
	Rate	Rate	Rate	Rate	Rate	Rate																	
	13						266	06		272	2 PAID IN FULL APR 18 1950	4794		272									
	13						266	06		272	3 PAID IN FULL MAY 31 1950	7964		272									
	13						266	06		272	4 PAID IN FULL MAY 31 1950	7964		272									
	13						266	06		272	5 PAID IN FULL APR 8 5 1950	5043		272									
	228						4662	104		4766	6 PAID IN FULL APR 8 5 1950	5043		4766									
	13						266	06		272	7 PAID IN FULL APR 8 5 1950	5043		272									
	74						1514	34		1548	8 PAID IN FULL MAY 31 1950	7943		1548									
	13						266	06		272	9 PAID IN FULL MAR 29 1950												
	12						246	06		252	10 PAID IN FULL MAR 29 1950												
	12						246	06		252	11 PAID IN FULL MAR 29 1950	3864		1592									
	13						266	06		272	12 PAID IN FULL MAR 29 1950												
	13						266	06		272	13 PAID IN FULL MAR 29 1950												
	13						266	06		272	14 PAID IN FULL MAR 29 1950												
	84						1718	38		1756	15 2nd Half Paid MAY 31 1950	4463		1004		1004							
	12						246	06		252	16 2nd Half Paid MAY 31 1950												
	13						266	06		272	17											272 299	
SOLD FOR TAXES	13						266	06		272	18											272	
SOLD FOR TAXES	13						266	06		272	19											272	
SOLD FOR TAXES	13						266	06		272	20											272	
	4						12090	272		12362				10270		1004						1088	

Vertical text on left edge: The Narrows, Auditor's Plat of Lake Washburn Outlets, Singdale Bros. Roosevelt Trails, Roosevelt Pros. Lake Washburn

Vertical text on right edge: Roosevelt Soc., Singdale Bros. Lake Washburn, Roosevelt Streets, Lake Washburn, Iwana Heights, Roosevelt Lake

Assessment Roll and Tax List of Real Property in the Town of Crooked Lake,

Cass County, Minnesota, for Taxes for the Year 1949.

IN WHOSE NAME ASSESSED		TO WHOM TRANSFERRED				No. School District	Indicate Home-Stead Yes or No	Indicate Agricultural Use or No	TRUE AND FULL VALUATIONS				ASSESSED VALUATIONS					FINAL EQUALIZED VALUE	
Subdivision	Sec. or Lot	Town or Block	Rng.	Number of Acres of Land	LAND Exclusive of Structures and Improvements				BUILDINGS and Other Structures	MACHINERY Permanently Attached to Real Estate	TOTAL True and Full Value	RURAL		ALL OTHER		MACHINERY Permanently Attached to Real Estate	TOTAL ASSESSED VALUE		Total Assessed Value as Equalized by the Board of Review
												Homestead Up to \$4,000 20%	Over \$4,000 and Non-Homestead 33 1/3%	Homestead Up to \$4,000 25%	Over \$4,000 and Non-Homestead 40%				
State of Minnesota		6	6																
Dennis E. & Merna V Van Barger		7																	
Jessie Note		8																	
Ruth E. Huntley		1	7																
Lake Shore Improvement Co.		2																	
William H. Barnes		1	8																
Leo Merrier		2																	
George & Eleanor Draen		3																	
Benjamin H. & Marice B. Conniff		4																	
Lake Shore Improvement Co.		5																	
" "		6																	
" "		7																	
Ruth E. Huntley		1	9																
Lake Shore Improvement Co.		2																	
Wm. H. & Helen M. Sley		3																	
Leo Merrier		4																	

Abate # 4111

Abate # 4111

SOLD FOR TAXES	VALUATIONS BY SCHOOL DISTRICTS AS EQUALIZED BY DEPARTMENT OF TAXATION						Tax including State Homestead	State Tax on Non-Homestead	SPECIAL TAXES	TOTAL TAXES	PAID	WHEN PAID	Number of Receipt	March Settlement 1950	June Settlement 1950	Penalty	November Settlement 1950	Penalty	Collections to First Monday in January 1951	Penalty	Delinquent on First Monday in January 1951	Total Delinquent Tax and Penalty	REMARKS	
	District No. 1	District No. 2	District No. 3	District No. 4	District No. 5	District No. 6																		
	Rate	Rate	Rate	Rate	Rate	Rate																		
SOLD FOR TAXES	8						164	04		168		2 PAID IN FULL JUL 17 1950	11467							168			Penalty due 7.13	
	8						164	04		168		3 PAID IN FULL MAY 10 1950	6767							168				
	8						164	04		168		5 PAID IN FULL APR 25 1950	4990							168				
	8						102	02		104		6 1st Half Paid AUG 8 1950	11871							52			52 1/2 57	
	12						246	06		252		8											252 1/2 277	
	12						246	06		252		9 PAID IN FULL JUL 12 1950	11661							252				
	10						204	04		208		10 PAID IN FULL JUL 12 1950	11661							208				
	10						204	04		208		11 PAID IN FULL APR 21 1950	4888							208				
	17						348	08		356		12 PAID IN FULL MAY 22 1950	6828							356				
SOLD FOR TAXES	13						266	06		272		13 1st Half Paid AUG 8 1950	11872							136			136	
SOLD FOR TAXES	27						552	12		564		14 1st Half Paid AUG 8 1950	11872							282			282	
	48						982	22		1004		16 PAID IN FULL APR 25 1950	4990							1804				
	7						144	04		148		17 1st Half Paid AUG 8 1950	11871							74			74 1/2 81	
SOLD FOR TAXES	90						1840	42		1882		18 PAID IN FULL DEC 30 1950	14798							1882			1882 151	
	98						2004	44		2048		19 PAID IN FULL JUL 12 1950	11661							2048			2048 39	
												20												

Roosevelt Soc, Ringdale Bros. Lake, Roosevelt Streets, Lake Washburn, List of Officers, Iwanna Helgits, Roosevelt Lake

Assessment Roll and Tax List of Real Property in the Town of Crooked Lake

Cass County, Minnesota, for Taxes for the Year 1949.

IN WHOSE NAME ASSESSED	TO WHOM TRANSFERRED	DESCRIPTION OF PROPERTY			No. School District	Indicate Homesteaded Yes or No	Indicate Agricultural Yes or No	TRUE AND FULL VALUATIONS				ASSESSED VALUATIONS					FINAL EQUALIZED VALUE				
		Subdivision	Sec. or Lot	Town or Block				Rng.	Number of Acres of Land	LAND Exclusive of Structures and Improvements	BUILDINGS and Other Structures	MACHINERY Permanently Attached to Real Estate	TOTAL True and Full Value	RURAL		ALL OTHER		MACHINERY Permanently Attached to Real Estate	TOTAL ASSESSED VALUE	Total Assessed Value as Equalized by the Board of Review	
														Acres	100ths	Homestead Up to \$4,000 20%					Over \$4,000 and Non-Homestead 33 1/3%
Katherine Martindell + Delia J. Allen	Dingdale Bros. Roosevelt Trails		8	10		No															
Dennis E. + Mildred V. Von Baeriger			9																		
Jessie Hoots			10																		
Wm. J. Cropper			1	11																	
Geo. J. + Alvina Buckler's, Mrs. + Louise Buckler's	None Buckler's		2																		
State of Minnesota			3																		
Jacob J. + Nellie Carter			4			Yes															
Arthur Ekland			5			No															
"			6																		
Geo. J. + Christine M. Lindgren			7																		
Roy W. Oppgaard			8																		
John S. Subak			9																		
Lloyd M. + Anna M. Doble			10																		
"			11																		
Wesley M. + Guy Smith			12																		
Herman W. + Edna E. Rabe			13																		
"			14																		
Arthur H. Christopherson			15																		
Peter A. Cote			16																		
Elmer J. Steele			16			Yes															

SOLD FOR TAXES	VALUATIONS BY SCHOOL DISTRICTS AS EQUALIZED BY DEPARTMENT OF TAXATION						Tax Including State Homestead	State Tax on Non-Homestead	SPECIAL TAXES	TOTAL TAXES	PAID	WHEN PAID	Number of Receipt	March Settlement 1950	June Settlement 1950	Penalty	November Settlement 1950	Penalty	Collections to First Monday in January 1951	Penalty	Delinquent on First Monday in January 1951	Total Delinquent Tax and Penalty	REMARKS															
	District No.	District No.	District No.	District No.	District No.	District No.																		Rate	Rate	Rate	Rate	Rate	Rate	Rate	Rate	Rate	Rate	Rate	Rate	Rate	Rate	Rate
	Dollars	Dollars	Dollars	Dollars	Dollars	Dollars																		Mills	Mills	Mills	Mills	Mills	Mills	Mills	Mills	Mills	Mills	Mills	Mills	Mills	Mills	Mills
1	68						1390	32		1422	1	PAID IN FULL MAY 15 1950	6158																									
2	112						2290	52		2342	2	PAID IN FULL JUL 17 1950	11467									Penalty due .47																
3	12						246	06		252	3	PAID IN FULL MAY 18 1950	6769																									
4	14						286	06		292	4	PAID IN FULL MAY 20 1950	6794																									
5	14						286	06		292	5	PAID IN FULL MAY 31 1950	9452																									
6											6																											
7	218						164			164	7	PAID IN FULL MAY 18 1950	7600																									
8	15						306	06		312	8	PAID IN FULL MAY 31 1950	9456																									
9	110						2250	50		2300	9	PAID IN FULL MAY 31 1950	9456																									
10	16						328	08		336	10	PAID IN FULL JAN 31 1950	1052	336																								
11	16						328	08		336	11	PAID IN FULL MAY 22 1950	6843																									
12	16						328	08		336	12	PAID IN FULL MAY 9 1950	5431																									
13	47						962	22		984	13	PAID IN FULL MAY 5 1950	5288																									
14	12						246	06		252	14	PAID IN FULL MAY 5 1950																										
15	13						266	06		272	15											272 x 299																
16	172						1472			1472	16	PAID IN FULL APR 10 1950	3995																									
17	204						204			204	17	PAID IN FULL APR 10 1950	3995																									
18	1840						1840			1840	18	PAID IN FULL MAY 17 1950	5782																									
19	110						2250	50		2300	19	PAID IN FULL APR 8 1950	3981																									
20	252						5154			5154	20	PAID IN FULL MAY 29 1950	7792																									
	20596						20596	266		20862				336	17912							272																

The Harrows
 Auditor's Plat of Lake Washburn Outlets
 Roosevelt Trails
 Roosevelt Soo
 Tiedale Bros. Lake Washburn Outlets
 Roosevelt Soo
 Part of Plat of Lake Washburn Outlets
 Auditor's Plat of Lake Washburn Outlets
 Roosevelt Soo
 Lake Washburn Outlets
 Roosevelt Soo
 Iowa Heights
 Roosevelt Soo

Assessment Roll and Tax List of Real Property in the Town of Crooked Lake

POTRUS & SONS, BUREAU OF REAL ESTATE, MINNEAPOLIS

Table with columns: IN WHOSE NAME ASSESSED, TO WHOM TRANSFERRED, SUBDIVISION, Sec. or Lot, Town or Block, Rng., Number of Acres of Land, TRUE AND FULL VALUATIONS (LAND, BUILDINGS, MACHINERY, TOTAL), ASSESSED VALUATIONS (RURAL, ALL OTHER, MACHINERY, TOTAL ASSESSED VALUE), FINAL EQUALIZED VALUE.

Bartha Vaccari
Olav + Lida Christopherson
Thomas + Inga Have
Erick + Coral B. Have
Lake Shore Improvement Co.
Vernon W. + Adeline E. Georgia
Jacob J. Carter
Bernard + Theresa Leach
Lawrence W. Chenevert + Fern J. Nelson
Robert W. + Grace M. Millbradt
Anna C. Larson, Guardian of Harold S. Larson
Erlend N. Ramm
B. W. + Olive Yerta
Hazel L. + Frank B. Brandenburg
George A. Bloomquist
Vernon W. + Adeline E. Georgia

Abate # 4111
Abate # 4145

Abate # 4145
Abate # 4145

Cass County, Minnesota, for Taxes for the Year 1949.

Table with columns: SOLD FOR TAXES, VALUATIONS BY SCHOOL DISTRICTS AS EQUALIZED BY DEPARTMENT OF TAXATION, Tax including State Homestead, State Tax on Non-Homestead, SPECIAL TAXES, TOTAL TAXES, PAID, WHEN PAID, Number of Receipt, March Settlement 1950, June Settlement 1950, Penalty, November Settlement 1950, Penalty, Collections to First Monday in January 1951, Penalty, Delinquent on First Monday in January 1951, Total Delinquent Tax and Penalty, REMARKS.

Abate # 4066

11 183
24 221
404

Vertical text on the right edge of the page, including 'The Narrows' and 'Tingdale Bros. Lake Roosevelt Acres'.

Assessment Roll and Tax List of Real Property in the Town of Crooked Lake

Cass County, Minnesota, for Taxes for the Year 1949.

Table with columns: IN WHOSE NAME ASSESSED, TO WHOM TRANSFERRED, SUBDIVISION, DESCRIPTION OF PROPERTY, TRUE AND FULL VALUATIONS, ASSESSED VALUATIONS, VALUATIONS BY SCHOOL DISTRICTS AS EQUALIZED BY DEPARTMENT OF TAXATION, TAXES, PAID, WHEN PAID, and REMARKS. Includes handwritten entries for property owners like Chester A. Heindelberger and John R. Alexander.

Assessment Roll and Tax List of Real Property in the Town of Crooked Lake,

Cass County, Minnesota, for Taxes for the Year 1949.

Form 50 MILLER-BAYNE COMPANY, MINNEAPOLIS

IN WHOSE NAME ASSESSED	TO WHOM TRANSFERRED	DESCRIPTION OF PROPERTY					TRUE AND FULL VALUATIONS					ASSESSED VALUATIONS					FINAL EQUALIZED VALUE	
		Subdivision	Sec. or Lot	Town or Block	Rng.	Number of Acres of Land	LAND Exclusive of Structures and Improvements	BUILDINGS and Other Structures	MACHINERY Permanently Attached to Real Estate	TOTAL True and Full Value	RURAL		ALL OTHER		MACHINERY Permanently Attached to Real Estate	TOTAL ASSESSED VALUE		Total Assessed Value as Equalized by the Board of Review
											Acres	100ths	Homestead Up to \$4,000 20%	Over \$4,000 and Non-Homestead 33 1/4%				
						Dollars	Dollars	Dollars	Dollars	Dollars	Dollars	Dollars	Dollars	Dollars	Dollars	Dollars		

SOLD FOR TAXES	VALUATIONS BY SCHOOL DISTRICTS AS EQUALIZED BY DEPARTMENT OF TAXATION						Tax including State Homestead	State Tax on Non-Homestead	SPECIAL TAXES	TOTAL TAXES	PAID	WHEN PAID	Number of Receipt	March Settlement 1950	June Settlement 1950	Penalty	November Settlement 1950	Penalty	Collections to First Monday in January 1951	Penalty	Delinquent on First Monday in January 1951	Total Delinquent Tax and Penalty	REMARKS	
	District No.	District No.	District No.	District No.	District No.	District No.																		
	Rate	Rate	Rate	Rate	Rate	Rate																		

Lingle Bros. Roosevelt Trails

Lake Shore Improvement Co. 1 4 14 No. No

" " 2 5 " " "

Peter Hanson 3 6 Yes

John G. Andersens Lake Park

John Long 5 1 15 No

Thomas Andersen Kelter 6 2 Yes

" " 7 3 " " "

Christopher + Lillian Asland 8 4 No

Margaret Mae + Tom. Beckenkogen 9 5 " " "

Henry L. + Mae DeMaules 10 6 " " "

Midland Natl. Bk. + Trust Co. Trpls. 11 7 " " "

Jes. D. + Esther J. Richards 12 8 " " "

" " 13 9 " " "

Emma Flowers + Bernice Flowers Strass 14 10 " " "

Tom J. Kault 15 11 " " "

" " 16 12 " " "

Niels + Myrtle L. Nedergaard 17 13 " " "

Eli C. Martin 18 14 Yes

E. C. Martin 19 15 " " "

Geo. E. Diederick 20 16 No

1 SOLD FOR TAXES 9 184 04 188 1

2 SOLD FOR TAXES 10 204 04 208 2

3 21 39 798 798 3 PAID IN FULL MAR 13 1950 3764 798

4

5 17 348 08 356 5 PAID IN FULL JAN 31 1950 1063 356

6 21 10 204 204 6 PAID IN FULL APR 19 1950 4938 204

7 21 69 1412 1412 7 PAID IN FULL APR 19 1950 4838 1412

8 16 328 08 336 8 PAID IN FULL MAY 17 1950 5984 336

9 75 1534 34 1568 9 PAID IN FULL FEB 9 1950 1755 1568

10 113 2310 52 2362 10 PAID IN FULL JAN 25 1950 777 2362

11 17 348 08 356 11 PAID IN FULL APR 24 1950 4945 356

12 22 1676 38 1714 12 PAID IN FULL MAY 31 1950 9428 1714

13 16 328 08 336 13 PAID IN FULL MAY 31 1950 9428 336

14 15 312 06 312 14 PAID IN FULL APR 22 1950 4887 312

15 14 286 06 292 15 PAID IN FULL APR 12 1950 4647 292

16 14 286 06 292 16 PAID IN FULL APR 12 1950 4647 292

17 13 266 06 272 17 PAID IN FULL MAY 5 1950 5291 272

18 21 47 962 962 18 PAID IN FULL APR 17 1950 4733 962

19 21 7 144 144 19 PAID IN FULL APR 17 1950 4733 144

20 113 2310 52 2362 20 PAID IN FULL MAY 4 1950 5168 2362

11 172 14234 240 14474 4286 9792

11 172 14234 240 14474 4286 9792

11 172 14234 240 14474 4286 9792

Paid Under Protest

396

The Narrows

Lingle Bros. Auditor's Plat of Lake Washburn Outlets

Lingle Bros. Lake Washburn Acres

Plat of Auditor's Plat of Lake Washburn Acres

Roosevelt Lake

Roosevelt Soc

Lingle Bros. Lake Washburn Acres

Plat of Auditor's Plat of Lake Washburn Acres

Roosevelt Lake

Assessment Roll and Tax List of Real Property in the Jordan of Cracked Lake,

IN WHOSE NAME ASSESSED	TO WHOM TRANSFERRED	DESCRIPTION OF PROPERTY					No. School District	Indicate Homestead Yes or No	Indicate Agricultural Yes or No	TRUE AND FULL VALUATIONS					ASSESSED VALUATIONS					FINAL EQUALIZED VALUE	SOLD FOR TAXES	VALUATIONS BY SCHOOL DISTRICTS AS EQUALIZED BY DEPARTMENT OF TAXATION						SPECIAL TAXES	TOTAL TAXES	PAID	WHEN PAID	Number of Receipt	March Settlement 1950	June Settlement 1950	Penalty	November Settlement 1950	Penalty	Collections to First Monday in January 1951	Penalty	Delinquent on First Monday in January 1951	Total Delinquent Tax and Penalty	REMARKS																		
		Subdivision	Sec. or Lot	Town or Block	Rng.	Number of Acres of Land				LAND Exclusive of Structures and Improvements	BUILDINGS and Other Structures	MACHINERY Permanently Attached to Real Estate	TOTAL True and Full Value	RURAL		ALL OTHER		MACHINERY Permanently Attached to Real Estate	TOTAL ASSESSED VALUE			Total Assessed Value as Equalized by the Board of Review	District No.	District Rate	District No.	District Rate	District No.																District Rate	Tax including State Homestead	State Tax on Non-Homestead	Month	Day	Year	\$	cts.	\$	cts.	\$	cts.	\$	cts.	\$	cts.	\$	cts.
														Homestead Up to \$4,000	Over \$4,000 and Non-Homestead 33 1/4 %	Homestead Up to \$4,000	Over \$4,000 and Non-Homestead 40%																																											
Frank + Julia Miller		Singdale Bros. Roosevelt Trails	17	20				No										12				2.46	06				2.52	1	PAID IN FULL	FEB 27 1950	2448	252																												
State of Minnesota			18															12				2.46	06				2.52	3	PAID IN FULL	MAY 31 1950	9468	252																												
Kenneth V. + Dorris Lea			19															12				2.46	06				2.52	4	PAID IN FULL	APR 12 1950	4645	252																												
Mark P. Mattison			20															12				2.46	06				2.52	5	PAID IN FULL	APR 25 1950	4987	252																												
D. H. + Lydia A. Martin			21															7				1.44	04				1.48	6	1st Half Paid	AUG 8 1950	11874	74										74		81																
Lake Shore Improvement Co.			22															7				1.44	04				1.48	7	1st Half Paid	AUG 8 1950	11874	74										74		81																
"			23															7				1.44	04				1.48	8	1st Half Paid	AUG 8 1950	11874	74										74		81																
"			24															7				1.44	04				1.48	9	1st Half Paid	AUG 8 1950	11874	74											74		81															
"			25															12				1.44	04				1.48	10	PAID IN FULL	MAR 14 1950	3401	312																												
Halter Melvin Schramm			26															15				3.06	06				3.12	11	PAID IN FULL	MAR 14 1950	3401	272																												
"			27															13				2.66	06				2.72	12																																
Oley J. Nelson State of Minnesota			28															13				2.66	06				2.72	13	APR 1 1950	PAID IN FULL	4618	272																												
Douglas L. + Marguerite A. Matzke			29															14				2.66	06				2.72	14	APR 1 1950	PAID IN FULL	4618	272																												
"			30															15				20.04	44				20.48	15	APR 1 1950	PAID IN FULL	4618	2048																												
"			31															16				2.66	06				2.72	16	PAID IN FULL	MAY 31 1950	8412	272																												
Ida Rousion			32															17				2.66	06				2.72	17	PAID IN FULL	MAY 31 1950	9427	272																												
Herbert H. + Pearl L. Apelson			33															18				1.64	04				1.68	18	1st Half Paid	AUG 8 1950	11874	84										84		92																
Lake Shore Improvement Co.			34															19				2.66	06				2.72	19	PAID IN FULL	MAY 6 1950	5251	544																												
Nary H. + Alma E. Zobe			35															20				2.66	06				2.72	20	PAID IN FULL	MAY 6 1950	5251	544																												
"			36															11				58.96	136				60.32							252	5020	380					380																			

Abate #4111

Abate #4111

11
715 328

Roosevelt Soc
 Singdale Bros. Lake Roosevelt Stores
 Auditor's Plat of Lake Roosevelt Lake Washburn Outlets
 Auditor's Plat of Lake Roosevelt Lake Washburn Outlets
 Roosevelt Lake

Assessment Roll and Tax List of Real Property in the Town of Crooked Lake

IN WHOSE NAME ASSESSED	TO WHOM TRANSFERRED	DESCRIPTION OF PROPERTY			No. School District	Indicate Homestead Yes or No	Indicate Agricultural Yes or No	TRUE AND FULL VALUATIONS					ASSESSED VALUATIONS					FINAL EQUALIZED VALUE					
		SUBDIVISION	Sec. of Lot	Town or Block				Rng.	Number of Acres of Land	LAND Exclusive of Structures and Improvements	BUILDINGS and Other Structures	MACHINERY Permanently Attached to Real Estate	TOTAL True and Full Value	RURAL		ALL OTHER			MACHINERY Permanently Attached to Real Estate	TOTAL ASSESSED VALUE	Total Assessed Value as Equalized by the Board of Review		
														Acres	100ths	Homestead Up to \$4,000 20%	Over \$4,000 and Non-Homestead 33 1/3%					Homestead Up to \$4,000 25%	Over \$4,000 and Non-Homestead 40%
Lake Shore Improvement Co.		Singdale Bros. Roosevelt Falls	9	23		No										Abate # 4111							
Reinhart A + Josephine J Bladorn			1	24																			
John H + Margaret M Bohanon			2																				
Lake Shore Improvement Co.			3																				
"			4																				
"			5																				
Herbert H + Minnie Schauer			6																				
"			7																				
Lake Shore Improvement Co.			8													Abate # 4111							
"			9													Abate # 4111							
Theodore R Hansen			1	25		Yes																	
"			2																				
"			3																				
"			4																				
"			5																				
"			6																				
"			7																				
"			8																				
"			9			No																	
"			9			Yes																	
State of Minnesota		Outlots	A																				

200 Collected

Cass County, Minnesota, for Taxes for the Year 1949.

SOLD FOR TAXES	VALUATIONS BY SCHOOL DISTRICTS AS EQUALIZED BY DEPARTMENT OF TAXATION						Tax including State Homestead	State Tax on Non-Homestead	SPECIAL TAXES	TOTAL TAXES	PAID	WHEN PAID	Number of Receipt	March Settlement 1950	June Settlement 1950	Penalty	November Settlement 1950	Penalty	Collections to First Monday in January 1951	Penalty	Delinquent on First Monday in January 1951	Total Delinquent Tax and Penalty	REMARKS		
	District No.	District No.	District No.	District No.	District No.	District No.																			
	Rate	Rate	Rate	Rate	Rate	Rate																			
	Dollars	Dollars	Dollars	Dollars	Dollars	Dollars																			
1	2						1.44	04		1.48	1st Half Paid	AUG 8 1950	11876									74	74	81	
2																									
3	26						5.32	12		5.44	3 PAID IN FULL	MAY 24 1950	6850		1544										
4	8						1.64	04		1.68	4 PAID IN FULL	MAY 31 1950	9463		168										
5	133						3.28	06		3.34	5 PAID IN FULL	JUL 17 1950	11468				334							Penalty & Abated	
6	67						13.70	30		14.00	6 PAID IN FULL	DEC 21 1950	14457					1400	112						
7	8						1.64	04		1.68	7 PAID IN FULL	DEC 21 1950	12457					168	13						
8	8						1.64	04		1.68	8 PAID IN FULL	MAY 9 1950	5438		336										
9	8						1.64	04		1.68	9 PAID IN FULL	MAY 9 1950													
10	58						1.02	02		1.04	10 1st Half Paid	AUG 8 1950	11877									52	52	57	
11	10						1.22	02		1.24	11 1st Half Paid	AUG 9 1950	11878									62	62	68	
12	21	7					1.54			1.54	12 PAID IN FULL	APR 4 1950													
13	21	8					1.76			1.76	13 PAID IN FULL	APR 4 1950													
14	21	8					1.76			1.76	14 PAID IN FULL	APR 4 1950													
15	21	8					1.76			1.76	15 PAID IN FULL	APR 4 1950													
16	21	8					1.76			1.76	16 PAID IN FULL	APR 4 1950	7472		7106										
17	21	53					11.64			11.64	17 PAID IN FULL	APR 4 1950													
18	21	142					31.16			31.16	18 PAID IN FULL	APR 4 1950													
19	80						17.56	36		17.92	19 PAID IN FULL	APR 4 1950													
20	21	8					1.76			1.76	20 PAID IN FULL	APR 4 1950													
	771	242					56.46	126		57.72															
	276	80					10.70	36		11.06															
		322																							

Roosevelt Soc. Singdale Bros. Lake Shore Improvement Co. Roosevelt Falls. State Auditor's Office. Roseville Heights. Roosevelt Falls.

Assessment Roll and Tax List of Real Property in the Town of Crooked Lake

Cass County, Minnesota, for Taxes for the Year 1949.

Table with columns: IN WHOSE NAME ASSESSED, TO WHOM TRANSFERRED, SUBDIVISION, TRUE AND FULL VALUATIONS (LAND, BUILDINGS, MACHINERY, TOTAL), ASSESSED VALUATIONS (RURAL, ALL OTHER, MACHINERY, TOTAL ASSESSED VALUE), VALUATIONS BY SCHOOL DISTRICTS AS EQUALIZED BY DEPARTMENT OF TAXATION, TAX INCLUDING STATE, STATE TAX ON NON-HOMESTEAD, SPECIAL TAXES, TOTAL TAXES, PAID, WHEN PAID, Number of Receipt, March Settlement 1950, June Settlement 1950, Penalty, November Settlement 1950, Penalty, Collections to First Monday in January 1951, Penalty, Delinquent on First Monday in January 1951, Total Delinquent Tax and Penalty, REMARKS.

Assessment Roll and Tax List of Real Property in the town of Crooked Lake

Cass County, Minnesota, for Taxes for the Year 1949.

Table with columns for Description of Property, True and Full Valuations, Assessed Valuations, Final Equalized Value, Sold for Taxes, Valuations by School Districts, State Tax, Special Taxes, Total Taxes, Paid, When Paid, Number of Receipt, March Settlement, June Settlement, November Settlement, Penalty, Collections to First Monday in January 1951, Delinquent on First Monday in January 1951, Total Delinquent Tax and Penalty, and Remarks.

Rosemont Lake Heights
Call of Lot 2 Jan. 14-1949

State of Minnesota W. C. Slatten

Walter E. Hanson

Helbur + Sylvia Mitchell

N. E. Jankes

Lauritz C. + Helene R. Hanson

No tax for 1949

2877
9451

8336
6014

4
714
686

Roosevelt Soc

Highgate Bros. Lake
Roosevelt Stores

Part of District A
of Auditor's Part of
Lake Washburn Outlots

District's Washburn Lake
Addition

Assessment Roll and Tax List of Real Property in the Town of Crooked Lake

Cass County, Minnesota, for Taxes for the Year 1949.

Table with columns: IN WHOSE NAME ASSESSED, TO WHOM TRANSFERRED, SUBDIVISION, DESCRIPTION OF PROPERTY, TRUE AND FULL VALUATIONS, ASSESSED VALUATIONS, VALUATIONS BY SCHOOL DISTRICTS AS EQUALIZED BY DEPARTMENT OF TAXATION, TAXES, PAID, WHEN PAID, Number of Receipt, March Settlement 1950, June Settlement 1950, November Settlement 1950, Collections to First Monday in January 1951, Delinquent on First Monday in January 1951, Total Delinquent Tax and Penalty, REMARKS.

The Narrows, Auditor's Plat of Lake Washington Outlets, Ringdale Trails, Roosevelt Scores, State of Auditor's Plat of Lake Washington Outlets, Brown's Washington Lake Addition

Roosevelt Soc, Ringdale Pros. Lake Washington Scores, State of Auditor's Plat of Lake Washington Outlets, Brown's Washington Lake Addition

Assessment Roll and Tax List of Real Property in the Town of Crooked Lake

Cass County, Minnesota, for Taxes for the Year 1949.

IN WHOSE NAME ASSESSED	TO WHOM TRANSFERRED	SUBDIVISION	DESCRIPTION OF PROPERTY			No. School District	Indicate Homestead Yes or No	Indicate Agricultural Yes or No	TRUE AND FULL VALUATIONS				ASSESSED VALUATIONS						FINAL EQUALIZED VALUE	SOLD FOR TAXES	VALUATIONS BY SCHOOL DISTRICTS AS EQUALIZED BY DEPARTMENT OF TAXATION						Taxes including State Homestead	State Tax on New Homestead	SPECIAL TAXES	TOTAL TAXES	PAID	WHEN PAID	Number of Receipt	March Settlement 1950	June Settlement 1950	Penalty	November Settlement 1950	Penalty	Collections to First Monday in January 1951	Penalty	Delinquent on First Monday in January 1951	Total Delinquent Tax and Penalty	REMARKS															
			Sec. of Lot	Town or Block	Rng.				Number of Acres of Land	LAND Exclusive of Structures and Improvements	BUILDINGS and Other Structures	MACHINERY Permanently Attached to Real Estate	TOTAL True and Full Value	RURAL		ALL OTHER		MACHINERY Permanently Attached to Real Estate			TOTAL ASSESSED VALUE	Total Assessed Value as Equalized by the Board of Review	District No.	District No.	District No.	District No.																		District No.	District No.	Rate	Rate	Rate	Rate	Rate	Rate	Rate	Rate	Rate	Rate	Rate		
			Acres	150ths	Dollars				Dollars					Dollars	Dollars	Dollars	Dollars						Dollars	Dollars	Dollars	Dollars																		Dollars	Dollars	Dollars	Dollars	Dollars	Dollars	Dollars	Dollars	Dollars	Dollars	Dollars	Dollars	Dollars	Dollars	Dollars
			20%	33 1/3%	25%				40%	33 1/3%	Dollars	Dollars	Dollars	Dollars	Dollars	Dollars	Dollars	Dollars			Dollars	Dollars	Dollars	Dollars	Dollars	Dollars																		Dollars	Dollars	Dollars	Dollars	Dollars	Dollars	Dollars	Dollars	Dollars	Dollars	Dollars	Dollars	Dollars	Dollars	Dollars
			Rate	Rate	Rate				Rate	Rate	Rate	Rate	Rate	Rate	Rate	Rate	Rate	Rate			Rate	Rate	Rate	Rate	Rate	Rate																		Rate	Rate	Rate	Rate	Rate	Rate	Rate	Rate	Rate	Rate	Rate	Rate	Rate	Rate	
Barlow Realty Co.		Roosevelt Ls	1	1		No	No										15	306	06		312		PAID IN FULL	MAY 1 8 1950	6352								312																									
		(Lot 2 except 7.440' Sec. 27-139-26)	2			"	"										15	306	06		312		PAID IN FULL	MAY 1 8 1950	6352							312																										
Neuman Hanson & John & Myra Nuyell			3			"	"										15	306	06		312													312																								
"			4			"	"										15	306	06		312													312																								
"			5			"	"										15	306	06		312													312																								
"			6			"	"										16	328	08		336												336																									
Carl O. + Agnes J. Eklund			7			"	"										33	674	16		690		PAID IN FULL	APR 14 1950	4691								690																									
Chas. M. + Amanda Dittich			8			"	"										20	410	10		420		PAID IN FULL	MAY 6 1950																																		
"			9			"	"										17	348	08		356		PAID IN FULL	MAY 6 1950																																		
"			10			"	"										17	348	08		356		PAID IN FULL	MAY 6 1950	5351							2156																										
"			11			"	"										17	348	08		356		PAID IN FULL	MAY 6 1950																																		
"			12			"	"										17	348	08		356		PAID IN FULL	MAY 6 1950																																		
"			13			"	"										15	306	06		312		PAID IN FULL	MAY 6 1950																																		
State of Minnesota			14	2																																																						
State of Minnesota			15																																																							
State of Minnesota			16	3																																																						
William Henry Aurandt			17	2		"	"										15	306	06		312													312 + 343																								
State of Minnesota			18	3																																																						
State of Minnesota			19	4																																																						
State of Minnesota			20	5																																																						
																		49 46	108			50 54												3470		1584																						

The Narrows, Roosevelt Soc, Auditor's Plat of Lake Washburn Outlots, Roosevelt Trails, Iovane Heights, Lake Heights

Lake Lawrence Plat, Lindale Pros, Lake Washburn Outlots, Roosevelt Acres, Plat of City of Lake Washburn Outlots, Addition's Plat of Lake Washburn Outlots, Truman's Washburn Lake

Assessment Roll and Tax List of Real Property in the Town of Crooked Lake

Table with columns for property owners (e.g., Beer Ridge Land Co., Leo J. + Marie H. Braussean), valuations (RURAL, ALL OTHER, MACHINERY), taxes (SOLD FOR TAXES, VALUATIONS BY SCHOOL DISTRICTS), and payment status (PAID, WHEN PAID). Includes handwritten notes and totals.

Assessment Roll and Tax List of Real Property in the Town of Crooked Lake

Cass County, Minnesota, for Taxes for the Year 1949.

Table with multiple columns: IN WHOSE NAME ASSESSED, TO WHOM TRANSFERRED, SUBDIVISION, TRUE AND FULL VALUATIONS, ASSESSED VALUATIONS, VALUATIONS BY SCHOOL DISTRICTS, TAXES, PAID, WHEN PAID, etc.

Assessment Roll and Tax List of Real Property in the Town of Cracked Lake

Table with columns: IN WHOSE NAME ASSESSED, TO WHOM TRANSFERRED, SUBDIVISION, TRUE AND FULL VALUATIONS (LAND, BUILDINGS, MACHINERY, TOTAL), ASSESSED VALUATIONS (RURAL, ALL OTHER, MACHINERY, TOTAL ASSESSED VALUE), FINAL EQUALIZED VALUE.

Cass County, Minnesota, for Taxes for the Year 1949.

Table with columns: VALUATIONS BY SCHOOL DISTRICTS AS EQUALIZED BY DEPARTMENT OF TAXATION, Tax including State Homestead, State Tax on Non-Homestead, SPECIAL TAXES, TOTAL TAXES, PAID, WHEN PAID, Number of Receipt, March Settlement 1950, June Settlement 1950, November Settlement 1950, Collections to First Monday in January 1951, Delinquent on First Monday in January 1951, Total Delinquent Tax and Penalty, REMARKS.

Assessment Roll and Tax List of Real Property in the Town of Crooked Lake,

Cass County, Minnesota, for Taxes for the Year 1949.

Table with columns for Description of Property, True and Full Valuations, Assessed Valuations, Final Equalized Value, Sold for Taxes, and Tax details (District, State, Special, Total, Paid, When Paid, etc.). Includes handwritten entries for names like Algie Wilson and tax payment dates.

Assessment Roll and Tax List of Real Property in the Town of Crooked Lake

Cass County, Minnesota, for Taxes for the Year 1949.

Table with multiple columns: IN WHOSE NAME ASSESSED, TO WHOM TRANSFERRED, DESCRIPTION OF PROPERTY, TRUE AND FULL VALUATIONS, ASSESSED VALUATIONS, VALUATIONS BY SCHOOL DISTRICTS AS EQUALIZED BY DEPARTMENT OF TAXATION, TAXES, PAID, WHEN PAID, Number of Receipt, Settlement, Penalty, Collections, Delinquent, Total Delinquent, and REMARKS. Includes handwritten entries for property owners like Albert J. + Anna J. Johr, Nelson + May J. Flint, etc.

Roosevelt Soc, Lake Lawrence Point, Ashburn Pines, Sunset Beach, Section 28-135-26, Plat of Part of Lot 7

Roosevelt Soc, Lake Lawrence Point, Ashburn Pines, Sunset Beach, Section 28-135-26, Plat of Part of Lot 7

Assessment Roll and Tax List of Real Property in the Town of Crooked Lake

Cass County, Minnesota, for Taxes for the Year 1949.

Form 50 - MILLER-DAVIS COMPANY, MINNEAPOLIS

IN WHOSE NAME ASSESSED	TO WHOM TRANSFERRED	DESCRIPTION OF PROPERTY				TRUE AND FULL VALUATIONS					ASSESSED VALUATIONS					FINAL EQUALIZED VALUE	
		Sec. or Lot	Town or Block	Rng.	Number of Acres of Land	LAND Exclusive of Structures and Improvements	BUILDINGS and Other Structures	MACHINERY Permanently Attached to Real Estate	TOTAL True and Full Value	RURAL		ALL OTHER		MACHINERY Permanently Attached to Real Estate	TOTAL ASSESSED VALUE		Total Assessed Value as Equalized by the Board of Review
										Acres	100ths	Homestead Up to \$4,000 20%	Over \$4,000 and Non-Homestead 33 1/4%				
						Dollars	Dollars	Dollars	Dollars	Dollars	Dollars	Dollars	Dollars	Dollars	Dollars		
		SUBDIVISION Washburn Pines Lot 4 Sec 4-139-26															
Albert H + Anna J. Zehr		1													Abate # 4150		
"		2													"		
Doug J. Schaumburg		3															
"		4															
Allen C. + Cecilia Auger		5															
"		6															
Francis J. Lowrey		7															
"		8															
"		9															
"		10															
"		11															
"		12															
E. C. Lowrey		13															
"		14															
Joseph L. Aldrich		15															
"		16															
Geo. Barchardt Barchardt		17															
"		18															
Lloyd H. Ahlquist		19															
"		20															

SOLD FOR TAXES	VALUATIONS BY SCHOOL DISTRICTS AS EQUALIZED BY DEPARTMENT OF TAXATION						Tax including State Homestead	State Tax on Non-Homestead	SPECIAL TAXES	TOTAL TAXES	PAID	WHEN PAID	Number of Receipt	March Settlement 1950	June Settlement 1950	Penalty	November Settlement 1950	Penalty	Collections to First Monday in January 1951	Penalty	Delinquent on First Monday in January 1951	Total Delinquent Tax and Penalty	REMARKS
	District No.	District No.	District No.	District No.	District No.	District No.																	
	Rate	Rate	Rate	Rate	Rate	Rate																	
	Dollars	Dollars	Dollars	Dollars	Dollars	Dollars	\$ cts.	\$ cts.	\$ cts.	\$ cts.	Month Day Year		\$ cts.	\$ cts.	\$ cts.	\$ cts.	\$ cts.	\$ cts.	\$ cts.	\$ cts.	\$ cts.		
1			27				592	12	6.04	1	2nd Half Paid JUL 1 7 1950	1135		302		302							
2			23				2832	60	28.92	2	1st Half Paid MAY 3 1 1950	1135		1446		1446							
3			124				2722	56	27.78	3	2nd Half Paid JUL 1 7 1950	6946		2778									
4			13				286	06	2.92	4	1st Half Paid MAY 3 1 1950	6946		292									
5			113				2480	52	25.32	5	2nd Half Paid JUL 1 7 1950	8398		2532									
6			17				374	08	3.82	6	1st Half Paid MAY 3 1 1950	8398		382									
7			11				242		2.42	7	PAID IN FULL FEB 2 8 1950	4198	242										
8			111				2436		24.36	8	PAID IN FULL FEB 2 8 1950	4198	2436										
9			10				220		2.20	9	PAID IN FULL FEB 2 8 1950	4198	220										
10			10				220		2.20	10	PAID IN FULL FEB 2 8 1950	4198	220										
11			10				220		2.20	11	PAID IN FULL FEB 2 8 1950	4198	220										
12			10				220		2.20	12	PAID IN FULL FEB 2 8 1950	4198	220										
13			110				2414	50	24.64	13	2nd Half Paid OCT 2 8 1950	12868		1232		1232							
14			17				374	08	3.82	14	1st Half Paid MAY 2 2 1950	6875		191		191							
15			155				3402	70	34.72	15	2nd Half Paid OCT 2 8 1950	12868		3472									
16			81				1778	38	18.16	16	1st Half Paid MAY 2 2 1950	6875		1816									
17			114				2502	52	25.54	17	2nd Half Paid OCT 2 8 1950	9423		2554									
18			17				374	08	3.82	18	1st Half Paid MAY 2 2 1950	6875		382									
19			421				9242	192	94.34	19	PAID IN FULL MAY 3 1 1950	9423										9434 910377	
20			17				374	08	3.82	20	PAID IN FULL MAY 3 1 1950	9423										382 420	
			162				3830	620	38.94				2558	17379	3171							9816	

Vertical text on the left edge of the page, including 'Lake Lawrence Spirt', 'Washburn Pines', 'Crooked Lake', and 'Addition'.

Vertical text on the right edge of the page, including 'Roosevelt Stairs', 'Pines-A-Plenty on Lake Washburn', and 'Sunset Ranch on Roosevelt Lake'.

Assessment Roll and Tax List of Real Property in the *Town* of *Crooked Lake*

DESCRIPTION OF PROPERTY				TRUE AND FULL VALUATIONS					ASSESSED VALUATIONS					FINAL EQUALIZED VALUE Dollars	
				LAND Exclusive of Structures and Improvements	BUILDINGS and Other Structures	MACHINERY Permanently Attached to Real Estate	TOTAL True and Full Value	RURAL		ALL OTHER		MACHINERY Permanently Attached to Real Estate	TOTAL ASSESSED VALUE		Total Assessed Value as Equalized by the Board of Review
								Homestead Up to \$4,000 20%	Over \$4,000 and Non-Homestead 33 1/3%	Homestead Up to \$4,000 25%	Over \$4,000 and Non-Homestead 40%				
<i>all of this tract in Village of Vaucluse</i> IN WHOSE NAME ASSESSED TO WHOM TRANSFERRED SUBDIVISION Sunset Beach on Roosevelt Lake All of Lot 2 + Lot 5 sec 45.2' x 166.7' x 60.2' x 30' sec 26-13926 Acres 100ths				No. School District	Indicate Homestead Yes or No	Indicate Agricultural Yes or No	Dollars	Dollars	Dollars	Dollars	Dollars	Dollars	Dollars		
1	Alvin J. Bendickson	Tract 1	26-13926	No.	No.										
2	Oscar M. & Laura E. Anderson	" 2		"	"										
3	Christians + Adeline Ringstead	" 3		"	"										
4	Margaret + Everett E. Seibel	" 4		"	"										
5	A. D. Bogen Co.	" 5		"	"										
6	"	" 6		"	"										
7	"	" 7		"	"										
8	"	" 8		"	"										
9	"	" 9		"	"										
10	"	" 10		"	"										
11	Williams + Jennae P. Jorembke	" 11		"	"										
12	Shedore M. + Irene B. Aiken	" 12 E. of road		"	"										
13	"	75' of Tract 12 W. of road		"	"										
14	Clifford L. + Alice D. Theisel	Tract 12 W. of road except 75'		"	"										
15	Shedore M. + Irene B. Aiken	Tract 13		"	"										
16	Paul R. + Inez Elizabeth Peterson	N. 40' E. of road + N. 42.5' W. of road		"	"										
17	Emil W. + Clara Z. Rauchstadt	all S. of N. 80' E. of road and S. 1/2 of N. 85' W. of road		"	"										
18	"			"	"										
19	John Shaughnessy	S. 40' of N. 80' E. of road + S. 1/2 of N. 85' W. of road Tract 14		"	"										
20	"			"	"										

Cass County, Minnesota, for Taxes for the Year 1949.

SOLD FOR TAXES	VALUATIONS BY SCHOOL DISTRICTS AS EQUALIZED BY DEPARTMENT OF TAXATION						Tax including State Homestead	State Tax on Non-Homestead	SPECIAL TAXES	TOTAL TAXES	PAID	WHEN PAID	Number of Receipt	March Settlement 1950	June Settlement 1950	Penalty	November Settlement 1950	Penalty	Collections to First Monday in January 1951	Penalty	Delinquent on First Monday in January 1951	Total Delinquent Tax and Penalty	REMARKS			
	District No. 1	District No. 2	District No. 3	District No. 4	District No. 5	District No. 6																				
	Rate Rate Rate Rate Rate Rate	Rate Rate Rate Rate Rate Rate	Rate Rate Rate Rate Rate Rate	Rate Rate Rate Rate Rate Rate	Rate Rate Rate Rate Rate Rate	Rate Rate Rate Rate Rate Rate																				
1							328	08		336	1													336 370		
2							1840	42		1882	2 PAID IN FULL	FEB 10 1950	1778	1882												
3							1964			1964	3 PAID IN FULL	MAR 11 1950	3337		1964											
4							306	06		312	4 PAID IN FULL	APR 1 1950	4624		312											
5							328	08		336	5 PAID IN FULL	MAY 4 1950	5761		336											
6							306	06		312	6 PAID IN FULL	APR 24 1950	4925		312											
7							306	06		312	7 PAID IN FULL	MAY 9 1950			1836											
8							512	12		524	8 PAID IN FULL	MAY 9 1950														
9							306	06		312	9 PAID IN FULL	MAY 31 1950			1624											
10							306	06		312	10 PAID IN FULL	MAY 31 1950														
11							306	06		312	11														312 343	
12	HOLD FOR TAXES						306	06		312	12 1st Half Paid	AUG 1 9 1950	12036			240	13								156	
13	HOLD FOR TAXES						164	04		168	13 2nd Half Paid	AUG 1 9 1950													84	
14	HOLD FOR TAXES						164	04		168	14 PAID IN FULL	NOV 28 1950	4783						168	13						
15	HOLD FOR TAXES						2904	66		2970	15 2nd Half Paid	AUG 1 9 1950	12036				1485	74							1485	
16							306	06		312	16 PAID IN FULL	MAY 31 1950	9445		312											
17							1984	44		2028	17 2nd Half Paid	OCT 2 9 1950	3337			1014									Paid Under Protest	
18																										
19																										
20																										

Lake Lawrence Point
 Washburn Pines
 Sunset Beach on Roosevelt Lake
 Pines - a Planting on Lake Washburn
 Addition
 Section 26-139-26

Roosevelt Shores
 Pines - a Planting on Lake Washburn
 Andersen Bay
 Part of Part of Lot 7
 Section 26-139-26

Assessment Roll and Tax List of Real Property in the Town of Crooked Lake,

Cass County, Minnesota, for Taxes for the Year 1949.

Form 50

View of
Whose Name Assessed

TO WHOM TRANSFERRED

DESCRIPTION OF PROPERTY

TRUE AND FULL VALUATIONS

ASSESSED VALUATIONS

FINAL EQUALIZED VALUE

VALUATIONS BY SCHOOL DISTRICTS AS EQUALIZED BY DEPARTMENT OF TAXATION

SOLD FOR TAXES

Tax including State Homestead

State Tax on Non-Homestead

SPECIAL TAXES

TOTAL TAXES

PAID

WHEN PAID

Number of Receipt

March Settlement 1950

June Settlement 1950

Penalty

November Settlement 1950

Penalty

Collections to First Monday in January 1951

Penalty

Delinquent on First Monday in January 1951

Total Delinquent Tax and Penalty

REMARKS

Subdivision
Part of Part of Lot 7
Sec. 26-139-26

Leah O. Riley
"
James Ode
Ewald Neubert
Jack Seiderke
Harry & Stella Kringoth
Paul E. Erickson
Gene E. Erickson
Vernon & Adeline E. Georgia

Table with columns for property description, true and full valuations (Land, Buildings, Machinery, Total), assessed valuations (Rural, All Other, Machinery, Total), and final equalized value.

Table with columns for school district valuations, taxes (Total, Paid, When Paid), and settlement details (March, June, November, Delinquent).

Handwritten summary totals at the bottom of the tax table.

Vertical text on the left margin: Lake Lawrence Point, Washburn Pines, Sunset Beach on Roosevelt Lake, Part of Part of Lot 7, Section 26-139-26.

Vertical text on the right margin: Roosevelt Shores, Pine-Plenty on Antaresen Bay, Lake Washburn.

Assessment Roll and Tax List of Real Property in the Lawn of Cracked Lake,

Cass County, Minnesota, for Taxes for the Year 1949.

FORM 50 - MILLER BAYNE COMPANY, MINNEAPOLIS

IN WHOSE NAME ASSESSED	TO WHOM TRANSFERRED	DESCRIPTION OF PROPERTY				No. School District	Indicate Homestead Yes or No	Indicate Agricultural Yes or No	TRUE AND FULL VALUATIONS				ASSESSED VALUATIONS					FINAL EQUALIZED VALUE			
		Subdivision	Sec. or Lot	Town or Block	Rng.				Number of Acres of Land	LAND Exclusive of Structures and Improvements	BUILDINGS and Other Structures	MACHINERY Permanently Attached to Real Estate	TOTAL True and Full Value	RURAL		ALL OTHER			MACHINERY Permanently Attached to Real Estate	TOTAL ASSESSED VALUE	Total Assessed Value as Equalized by the Board of Review
														Acres	100ths	Homestead Up to \$4,000 20%	Over \$4,000 and Non-Homestead 33 1/3%				
Thorvald + Olevine Andersen		Andersen Bay	21																		
"			22																		
"			23																		
"			24																		
Conrad + Mary Engler			25																		
Harold B. Floren			26																		
Thorvald + Olevine Andersen Johnson			27																		
Thorvald + Olevine Andersen			28																		
"			29																		
		Luscher's Bay (Part of Lot 16, Sec. 26-139-26)																			
			1																		
			2																		
			3																		
			4																		
			5																		
			6																		
			7																		
			8																		
			9																		
			10																		
			11																		
			12																		
			13																		
			14																		
			15																		
			16																		
			17																		
			18																		
			19																		
			20																		

SOLD FOR TAXES	VALUATIONS BY SCHOOL DISTRICTS AS EQUALIZED BY DEPARTMENT OF TAXATION						Tax including State Homestead	State Tax on Non-Homestead	SPECIAL TAXES	TOTAL TAXES	PAID	WHEN PAID	Number of Receipt	March Settlement 1950	June Settlement 1950	Penalty	November Settlement 1950	Penalty	Collections to First Monday in January 1951	Penalty	Delinquent on First Monday in January 1951	Total Delinquent Tax and Penalty	REMARKS
	District No.	District No.	District No.	District No.	District No.	District No.																	
	Rate	Rate	Rate	Rate	Rate	Rate																	
1	7						144 04		148	1 PAID IN FULL	MAY 31 1950												
2	7						144 04		148	2 PAID IN FULL	MAY 31 1950	9457		592									
3	7						144 04		148	3 PAID IN FULL	MAY 31 1950												
4	7						144 04		148	4 PAID IN FULL	MAY 31 1950												
5	7						144 04		148	5 PAID IN FULL	APR 21 1950	4885		7148									
6	7						144 04		148	6 PAID IN FULL	APR 21 1950	4885		7148									
7	7						144 04		148	7 PAID IN FULL	MAY 31 1950												
8	7						144 04		148	8 PAID IN FULL	MAY 31 1950	9457		444									
9	7						144 04		148	9 PAID IN FULL	MAY 31 1950												
10																							
11																							
12																							
13																							
14																							
15																							
16																							
17																							
18																							
19																							
20																							

Roosevelt Shores
 Fines - 1-15-1950
 Late Washburn
 Minn. State
 Brown Flat of Lot 7
 Addit. Section 26-139-26

Clifford T. Carr, Jr. Barrager

11 7/11 63

1296 36

1332

61332

Assessment Roll and Tax List of Real Property in the _____ of _____

FORM 50 - MILLER-BAY COMPANY, MINNEAPOLIS

IN WHOSE NAME ASSESSED

TO WHOM TRANSFERRED

DESCRIPTION OF PROPERTY

SUBDIVISION
Luscher's Bay

1 3

2 2

3 3

4 1 4

6 2

7 3

8 4

9 5

10 6

Outlet A

B

C

D

E

F

G

H

I

J

K

TRUE AND FULL VALUATIONS

ASSESSED VALUATIONS

FINAL EQUALIZED VALUE

LAND Exclusive of Structures and Improvements	BUILDINGS and Other Structures	MACHINERY Permanently Attached to Real Estate	TOTAL True and Full Value	RURAL		ALL OTHER		MACHINERY Permanently Attached to Real Estate 33 1/3 %	TOTAL ASSESSED VALUE	Total Assessed Value as Equalized by the Board of Review	Dollars
				Homestead Up to \$4,000 20%	Over \$4,000 and Non- Homestead 33 1/4 %	Homestead Up to \$4,000 25%	Over \$4,000 and Non- Homestead 40%				
Dollars	Dollars	Dollars	Dollars	Dollars	Dollars	Dollars	Dollars	Dollars	Dollars	Dollars	Dollars

SOLD FOR TAXES

VALUATIONS BY SCHOOL DISTRICTS AS EQUALIZED BY DEPARTMENT OF TAXATION

District No.	District No.	District No.	District No.	District No.	District No.	Tax including State Homestead	State Tax on Non-Homestead	SPECIAL TAXES	TOTAL TAXES	PAID	WHEN PAID	Number of Receipt	March Settlement 1950	June Settlement 1950	Penalty	November Settlement 1950	Penalty	Collections to First Monday in January 1951	Penalty	Delinquent on First Monday in January 1951	Total Delinquent Tax and Penalty	REMARKS
Rate	Rate	Rate	Rate	Rate	Rate	Mills	Mills	\$ cts.	\$ cts.		Month Day Year		\$ cts.	\$ cts.	\$ cts.	\$ cts.	\$ cts.	\$ cts.	\$ cts.	\$ cts.	\$ cts.	
Dollars	Dollars	Dollars	Dollars	Dollars	Dollars	\$ cts.	\$ cts.	\$ cts.	\$ cts.													

1
2
3
4
5
6
7
8
9
10
11
12
13
14
15
16
17
18
19
20

1
2
3
4
5
6
7
8
9
10
11
12
13
14
15
16
17
18
19
20

Recovert Shares
Pines-A-Plenty on Lake Washburn
Andresen Bay
Brown Plat of Part of Lot 7 Addl Section 26-138-88

Joseph & Mary Tophen & Clara Helen Tophen
Eda Hope

Harry H. & Blanche E. Erion
Clifford & Grace J. Barrager

Eugene L. & Viola L. O'Brien
Abbie J. Moore

Assessment Roll and Tax List of Real Property in the _____ of _____,

Form 50 - MILLER-BAY COMPANY, MINNEAPOLIS

IN WHOSE NAME ASSESSED	TO WHOM TRANSFERRED	DESCRIPTION OF PROPERTY						TRUE AND FULL VALUATIONS				ASSESSED VALUATIONS						FINAL EQUALIZED VALUE Dollars		
		SUBDIVISION	Sec. of Lot	Town or Block	Rng.	Number of Acres of Land		LAND Exclusive of Structures and Improvements	BUILDINGS and Other Structures	MACHINERY Permanently Attached to Real Estate	TOTAL True and Full Value	RURAL		ALL OTHER		MACHINERY Permanently Attached to Real Estate 33 1/3%	TOTAL ASSESSED VALUE		Total Assessed Value as Equalized by the Board of Review	
						Acres	100ths					Homestead Up to \$4,000 20%	Over \$4,000 and Non-Homestead 33 1/3%	Homestead Up to \$4,000 25%	Over \$4,000 and Non-Homestead 40%					Dollars
	Asst. Dozen Company Roosevelt Lake Addition (Lot 3 Sec. 23-137-26)																			

Roosevelt Shores
Pines-A-Pleanty on Lake Washburn
Androsen Bay
Brown Plat of Part of Lot 7 Addl Section 26-137-26



Green Adit of lot 7 of Andrew Bay Pine-A-Plenty on Reservoir Shores

July 7-1899

crossed Lake July -
Check at Lake Park with 18
Vernon Sewell June 9
page 29 ck for building
house \$450 partition 200
paid Terry 38 gasoline 21
value 3 - pump -

1-220
2000

not taken

139
120000

200
12000

and Tax List, County of Cass, Minnesota, for the Year 1949.

CLASS 4-ASSESSED AT 40% OF TRUE AND FULL VALUE							VALUATION BY SCHOOL DISTRICTS																	
47 Structures on Railway Lands, not Owned by Railways	48 Privately Owned Structures on Lands of the U. S. and on Lands leased from the state for a term of less than 3 yrs.	49 Steam and Motor Boats, Sailing Vessels, Barges and all other Water Craft	50 Poles, Wires, Cables, Mains, Pipes, Rails, Ties and Cars of St. Ry., Light, Heat, Power, Water and Gas Cos.	51 Billboards, Display Signs and Advertising Devices	52 All Other Tangible Personal Property and Included in the foregoing Items	TOTAL ASSESS- ED VALUE CLASS 4	District				Total General Taxes	State Tax Mills	TOTAL TAXES	PAID	WHEN PAID	Number of Receipt	March Settlement 1950	June Settlement 1950	Penalty	November Settlement 1950	Penalty	Collections to 1st Monday in January 1951	Penalty	Delinquent on 1st Monday in January 1951
							No.	Rate Mills	No.	Rate Mills														

1
2
3
4
5
6
7
8