

ASSESSMENT & TAX LIST

Birch Lake

1948











SUMMARY OF TAX COLLECTION

Original Levy	\$11,278.05
Adjustments	
<b>Cancellations</b>	
Abatements	\$55.56
	\$198.40
	<del>\$11,074.09</del>
COLLECTIONS	
March Settlement	\$2,419.46
June Settlement	\$362.53
November Settlement	\$2,671.91
January Settlement	\$2,028.22
	\$8,926.72
Over Collected	\$16.36
Under Collected	
Delinquent	\$2,133.73
	\$217.37
<b>Total</b>	<del>\$11,074.09</del>

REAL  
 Kearney Heights  
 Ogema Point  
 Arthur's Point



Treasurer's Office, Cass County, Minnesota

RECEIVED this, the first Monday (being the 3<sup>rd</sup> day) of January, A. D. 1949, of L. C. Peterson, Auditor of said County, Minnesota, the Tax List of all Taxable Real and Personal Property in the Town of Birch Lake in said County for the year A. D. 1948 as specified above and amounting to \_\_\_\_\_ Dollars

Paul H. Jewell  
County Treasurer.

Auditor's Office, Cass County, Minnesota

I, \_\_\_\_\_ Auditor of said County, and State of Minnesota, do hereby certify that the following is a correct list of the Taxes levied on the Real and Personal Property in the \_\_\_\_\_ of \_\_\_\_\_ for the year 1948.

WITNESS my hand and official seal, the \_\_\_\_\_ day of \_\_\_\_\_ 1949.

(SEAL) \_\_\_\_\_ County Auditor.

Office of County Treasurer, Cass County, Minnesota

To L. C. Peterson, County Auditor:

January 2, 1949  
Sir: I herewith return to you the Tax List for the Town of Birch Lake in said County for the year 1948, heretofore received from you. I certify that I have compared the same with the duplicate receipts in your office, and have written opposite the amount of each tax so received the words "First Quarter Paid", "Second Quarter Paid", "Third Quarter Paid" or "Paid in full" in the case may be, and the number of my receipt given in discharge of said tax, and each tract or lot of real property against which the taxes remain unpaid is delinquent for said year.

Yours respectfully  
Paul H. Jewell  
County Treasurer.

Auditor's Office, Cass County, Minnesota

194  
I hereby certify that on the first Monday in January 1950, I received of \_\_\_\_\_ County Treasurer, the Tax List of the \_\_\_\_\_ of \_\_\_\_\_ in said County for the year 1948; that I have compared the said list with the Statements received for by said Treasurer, which are on file in my office, and that each tract or lot of real property therein against which the taxes, or any part thereof, remains unpaid are delinquent for said year.

(SEAL) \_\_\_\_\_ County Auditor.



TABULAR SCHEDULE OF VALUATIONS,

LEVIED IN THE Sup. OF Birch Lake

RATES AND TAXES

COUNTY OF CASS, STATE OF MINNESOTA

School District No.	VALUATION BY SCHOOL DISTRICTS				RATE OF COUNTY TAXES										RATE OF TOWN TAXES										RATE OF		
	Agricultural Lands	Non-Agricultural Lands	Personal Property	Total Value of all Property except Money and Credits	Total Rate of State Tax	Rev.	R. & B.	Welfare	Bonds and Int.	51/9.	Total Rate of County Tax	Rev.	R. & B.	Drag Tax	State Loan	Total Rate of Town Tax	Local	Special	State Loan	Deficiency	Tuition	Transportation	81/0	20.			
11w	38120	7844	8507	54471	2.91	23.4	7.2	48.5	7.9	6.5	93.5	5.5	15.	1.	21.5	1.	15.	40.	18	47	10.	10.	10.	10.			
Assessed Value				N. H. 386		6.77																					
Homestead				49296		19296																					
Non-Homestead				2668		8507																					
Total				48964		35175																					

LOCAL 1 MILL AND SPECIAL SCHOOL TAXES BY DISTRICTS										ALL OTHER TAXES		
Total Rate of Sch'l Tax	Total Rate of all Taxes	Local 1 Mill	Special	State Loan	FUNDS	Rate	Amounts					
22.5	20041	3914	57182	152482	State-Non-Homestead		13600					
97.5	21641	1637	49058	65404	State-Homestead		15851					
Refusing Trans. B. & L. C. O.					County Revenue		127464					
					County Road and Bridge		39221					
					County Welfare		264186					
					Bonds and Interest		43034					
					Printing		35408					
					Town Revenue		29961					
					Town Road and Bridge		81709					
					Town Drag		5449					
					Town State Loan							
					School Local 1 Mill		5451					
					School Special		106237					
					School State Loan		217886					
					Deficiency		9805					
					Tuition		80072					
					Transportation		54471					
					Bond & Interest							
					Capital Outlay							

5451 106237 217886 9805 80072 54471 473922 11,298.05

Total Taxes Real Estate 9432.65  
 Pers. Prop. 1865.40  
 Total 11,298.05

Total Number of Acres 13,609.91  
 State of Minnesota, }  
 COUNTY OF CASS }  
 Auditor of said County and State aforesaid, do hereby certify that the foregoing is a true and correct schedule, showing the valuation of all the taxable property, in the Sup. of Birch Lake, in said County, the several rates of Taxation and Totals of the several Tax Funds levied thereon for the year A. D. 1948.  
 Witness my hand and official seal, this 1st day of December A. D. 1948.  
 L. E. Peterson  
 County Auditor

SEAL

REAL

Arthur's Point

Kearney Heights

Osama Point



COLLECTIONS OF TAXES OF 194

OF

CASS COUNTY, MINNESOTA

FUNDS	MARCH SETTLEMENT 1949	JUNE SETTLEMENT 1949	NOV. SETTLEMENT 1949	Amount Collected from Nov. 1948 to First Monday in Jan. 1949	REDUCTIONS	Total Reductions and Collected	BALANCE UNCOLLECTED	ADDITIONS	Total Uncollected to First Monday in January, 1949
State—Non-Homestead	3308	3624	2024	121					
State—Homestead	4056	5765	3733	292					
County Revenue	26597	41532	30016	2349					
County Road and Bridge	8184	12779	9236	723					
County Welfare	55126	86082	62212	4869					
County Bond and Interest	8979	14023	10133	793					
SKG.	7388	11537	8338	653					
Town Revenue	6251	9762	7055	552					
Town Road and Bridge	17049	26623	19241	1506					
Town Drag	1137	1775	1283	100					
Town State Loan									
FIRE									
School Local 1 Mill	1136	1775	1283	101					
School Special	27150	33546	24336	1546					
School State Loan									
Deficiency	45465	70996	13860	4016					
Tuition									
Transportation	2046	3195	2309	181					
B.S.	16708	26691	42710	1476					
C.O.	11366	17749	12828	1004					
	241946	366253	264191	20282					

	LOCAL 1 MILL	SPECIAL	STATE LOAN	DEFICIENCY	TRANSP.	B.S.	C.O.	TOTALS
MARCH SETTLEMENT								
School District No. A - Un. 71A - Un.	463 673	6952 20198		18534 26931	834 1212	6811 9897	4633 6733	38227 65844
Totals	1136	27150		45465	2046	16708	11366	103871
JUNE SETTLEMENT								
School District No. A - Un. 71A - Un.	1313 462	19698 13848		52532 18464	2364 838	19305 6786	13133 4616	108345 45007
Totals	1775	33546		70996	3195	26691	17749	153352
NOVEMBER SETTLEMENT								
School District No. A - Un. 71A - Un.	943 340	14143 10193	13860	13594	1697 612	37714 4996	9429 3399	77786 33134
Totals	1283	24336	13860	13574	2309	42710	12828	110920
NOVEMBER to JANUARY								
School District No. 71A - Un. A -	03 98	81 1465		108 3908	05 176	40 1436	27 977	264 8060
Totals	101	1546		4016	181	1476	1004	8324
ADDITIONS								
School District No.								
Totals								
REDUCTIONS								
School District No.								
Totals								

Arthur's Point  
 Kearney Heights  
 Ogema Point  
 REAL







































































IN WHOSE NAME ASSESSED	TO WHOM TRANSFERRED	DESCRIPTION OF PROPERTY	TRUE AND FULL VALUATION	ASSESSED VALUATIONS		FINAL EQUALIZED VALUE	SOLD FOR TAXES	VALUATIONS BY SCHOOL DISTRICTS EQUALIZED BY DEPARTMENT OF TAXATION						Tax including State Homestead	State Tax on Non-Homestead	SPECIAL TAXES	TOTAL TAXES	PAID	WHEN PAID	Number of Receipt	March Settlement 1949	June Settlement 1949	November Settlement 1949	Penalty	Collections to First Monday in January 1950	Penalty	Delinquent on First Monday in January 1950	Total Delinquent Tax and Penalty	REMARKS							
				RURAL	ALL OTHERS			District No.	District No.	District No.	District No.	District No.	District No.																	District No.	District No.					
Daniel L. & Muriel Peterson		173' 7147' 535.47' 3781'	Wescott (W. of RY) 24.04 ACS.	34	48	34		1										2nd Half Paid	OCT 31 1949	13405																
Geo. H. Mill		S. 18-140-30	EHLER (E. of RY) 12.00 ACS.	48	42	48		2										1st Half Paid	MAY 25 1949	6073		341														
Daniel L. & Muriel Peterson				42	34	42		3										2nd Half Paid	OCT 31 1949	5938		902														
David L. & Muriel Peterson				34	117	34		4										1st Half Paid	MAY 31 1949	13405		341														
Calvin R. Pearson				117	60	117		5										PAID IN FULL	JAN 27 1949	843	2344															
Walter C. & Margaret J. Mason				60	78	60		6										1st Half Paid	APR 27 1949	6103		613														
Hubert & Evelyn Leisy				78	46	78		7										PAID IN FULL	JAN 23 1949	844	8318															
E. R. Trust				46	56	46		8										PAID IN FULL	JAN 22 1949	246	940															
John J. Dries				56	20	56		9										PAID IN FULL	JAN 22 1949	246	1144															
Edwin M. Wescott				20	33	20		10										OLD FOR TAXES		400	400															
Greg Helen Berggren & Lenora Helander				33	200	33		11										PAID IN FULL	JUN 23 1949	9011																
Esther M. Wescott				200	65	200		12										Abatement #414		2806	4008															
H. Leisy				65	1302	65		13										PAID IN FULL	MAY 21 1949	6794		631														
Daniel L. & Muriel Peterson				1302	170	1302		14										PAID IN FULL	JAN 22 1949	246	3406															
Alta Mill King				170	34	170		15										2nd Half Paid	OCT 31 1949	13405		341														
Le Verne Nielson				34	40	34		16										1st Half Paid	MAY 25 1949	6073		341														
George H. Mill				40	802	40		17										2nd Half Paid	OCT 31 1949	5938		401														
E. R. & Effie B. Starkweather				802	170	802		18										1st Half Paid	MAY 31 1949	6794		1403														
				170	3668	170		19										2nd Half Paid	OCT 31 1949	3542		1834														
				3668	202	3668		20										1st Half Paid	MAY 31 1949	5938		2024														
				202	4048	202		20										1st Half Paid	MAY 31 1949	13405		2024														
				4048	3870	4048																														
				3870	166	3870																														
				166	38936	166																														

Arthur's Point Kearney Heights Ogema Point







































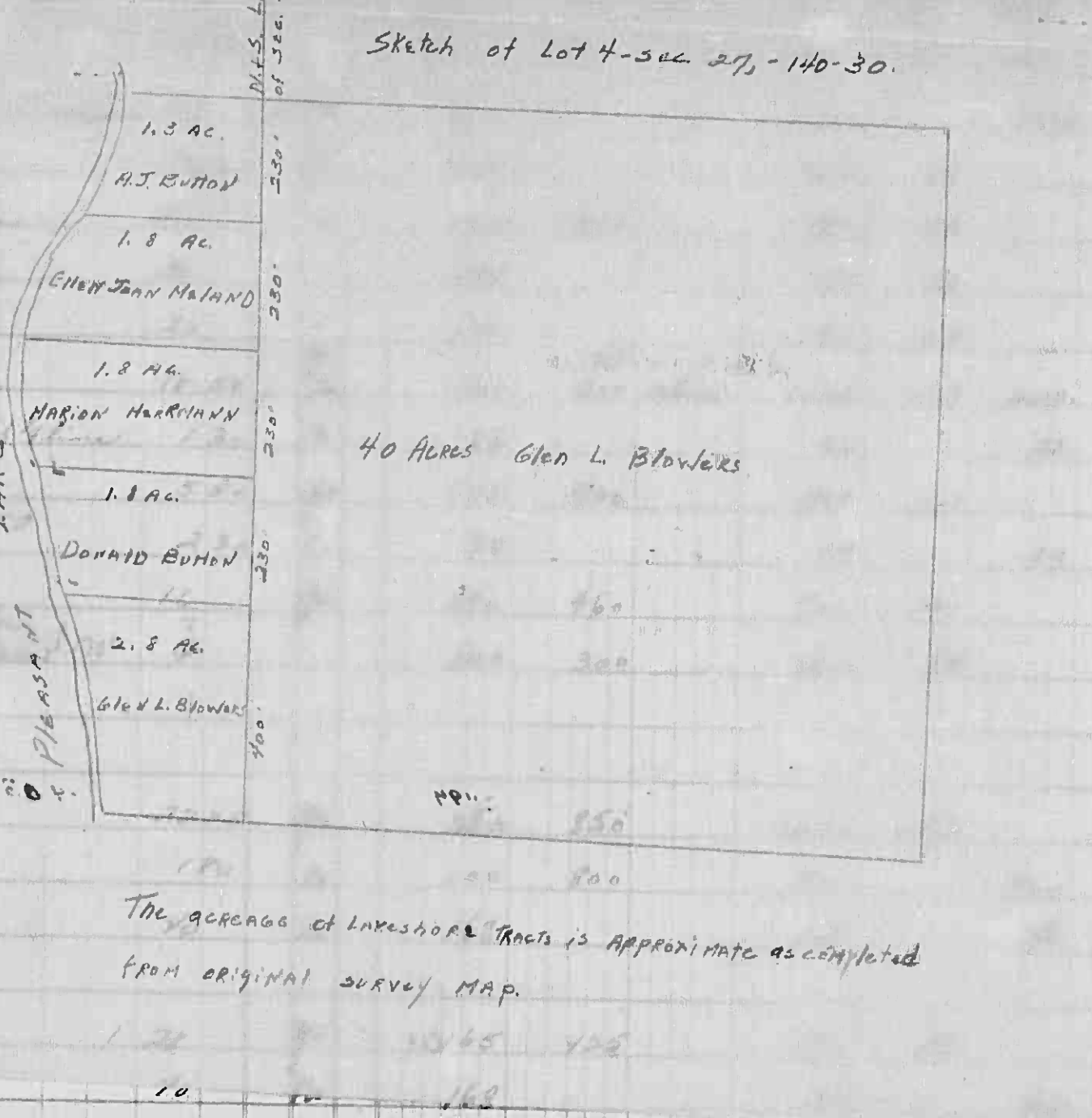




Assessment Roll and Tax List of Real Property in the Town of Beck Lake

Cass County, Minnesota, for Taxes for the Year 1948.

IN WHOSE NAME ASSESSED	TO WHOM TRANSFERRED	SUBDIVISION	DESCRIPTION OF PROPERTY	TRUE AND FULL VALUATIONS		ASSESSED VALUATIONS				FINAL EQUALIZED VALUE	SOLD FOR TAXES	VALUATIONS BY SCHOOL DISTRICTS EQUALIZED BY DEPARTMENT OF TAXES						SPECIAL TAXES	TOTAL TAXES	PAID	WHEN PAID	Number of Receipt	March Settlement 1949	June Settlement 1949	Penalty	November Settlement 1949	Penalty	Collections to First Monday in January 1950	Penalty	Delinquent on First Monday in January 1950	Total Delinquent Tax and Penalty	REMARKS							
				RURAL	ALL OTHER	Over \$4,000 and Non-Homestead 40%	MACHINERY Permanently Attached to Real Estate 33 1/3%	Total Assessed Value as Equalized by the Board of Review	District No.			District No.	District No.	District No.	District No.	District No.	District No.																District No.	District No.	District No.	District No.	District No.	District No.	District No.
Eva Branson		NE 1/4 of NE 1/4	1.3 AC. A.J. BUTON			100		100		100		SOLD FOR TAXES					2002	38		2040																			
Margaret Linn Josephine Linn		NW 1/4 of NE 1/4	1.8 AC. ENNA JEAN MALAND			48		48		48							962			962																			
Donald Button		1/2 of Lot 3 - 1/2 of 1/2	1.8 AC. ENNA JEAN MALAND			96		96		96		SOLD FOR TAXES					1924			1924																			
Margaret Linn Josephine Linn		1/2 of 1/2 of NE 1/4	1.8 AC. ENNA JEAN MALAND			89		89		89								782			782																		
Clarence Langness		1/2 of 1/2 of NE 1/4	1.8 AC. ENNA JEAN MALAND			28		28		28		SOLD FOR TAXES						562			562																		
Lawrence Vinton Peterson		1/2 of 1/2 of NE 1/4	1.8 AC. ENNA JEAN MALAND			305		305		305								6570	78		6648																		
Jack L. Ed. Louise L. Cole		1/2 of 1/2 of NE 1/4	1.8 AC. ENNA JEAN MALAND			22		22		22								440	08		448																		
Edwood Peterson		1/2 of 1/2 of NE 1/4	1.8 AC. ENNA JEAN MALAND			100		100		100								2002			2002																		
Marianne Jean Hummer		1/2 of 1/2 of NE 1/4	1.8 AC. ENNA JEAN MALAND			33		33		33								662	12		674																		
Margaret Linn Josephine Linn		1/2 of Lot 3	2.8 AC. DONALD BUTON			140		140		140								2806			2806																		
Malvina Paddygram		1/2 of 1/2 of NE 1/4	2.8 AC. DONALD BUTON			84		84		84								1684			1684																		
Rose + Wallace Dunning		1/2 of 1/2 of NE 1/4	2.8 AC. DONALD BUTON																																				
Harry G. G. Laura E. Cox		1/2 of 1/2 of NE 1/4	2.8 AC. DONALD BUTON			246		246		246								4930			4930																		
Lawrence Vinton Peterson		1/2 of 1/2 of NE 1/4	2.8 AC. DONALD BUTON			300		300		300								6012	116		6128																		
C. L. Friday		NW 1/4 of SE 1/4	2.8 AC. DONALD BUTON			56		56		56		SOLD FOR TAXES						1122	22		1144																		
Alma Rose + Edward C. Perry		NW 1/4 of SE 1/4	2.8 AC. DONALD BUTON			58		58		58								1162			1162																		
C. L. Friday + Harold Kemp		SE 1/4 of SE 1/4	2.8 AC. DONALD BUTON			56		56		56		SOLD FOR TAXES						1122	22		1144																		
319 30				3006 4015				7021 944 767				1711				Un 28174 218				35040				2180 36				710 313 24				8064				12616			



Arthur's Point  
Kearney Heights  
Osama Point



























































