

TAX LIST

1921

Village of Federal Dam

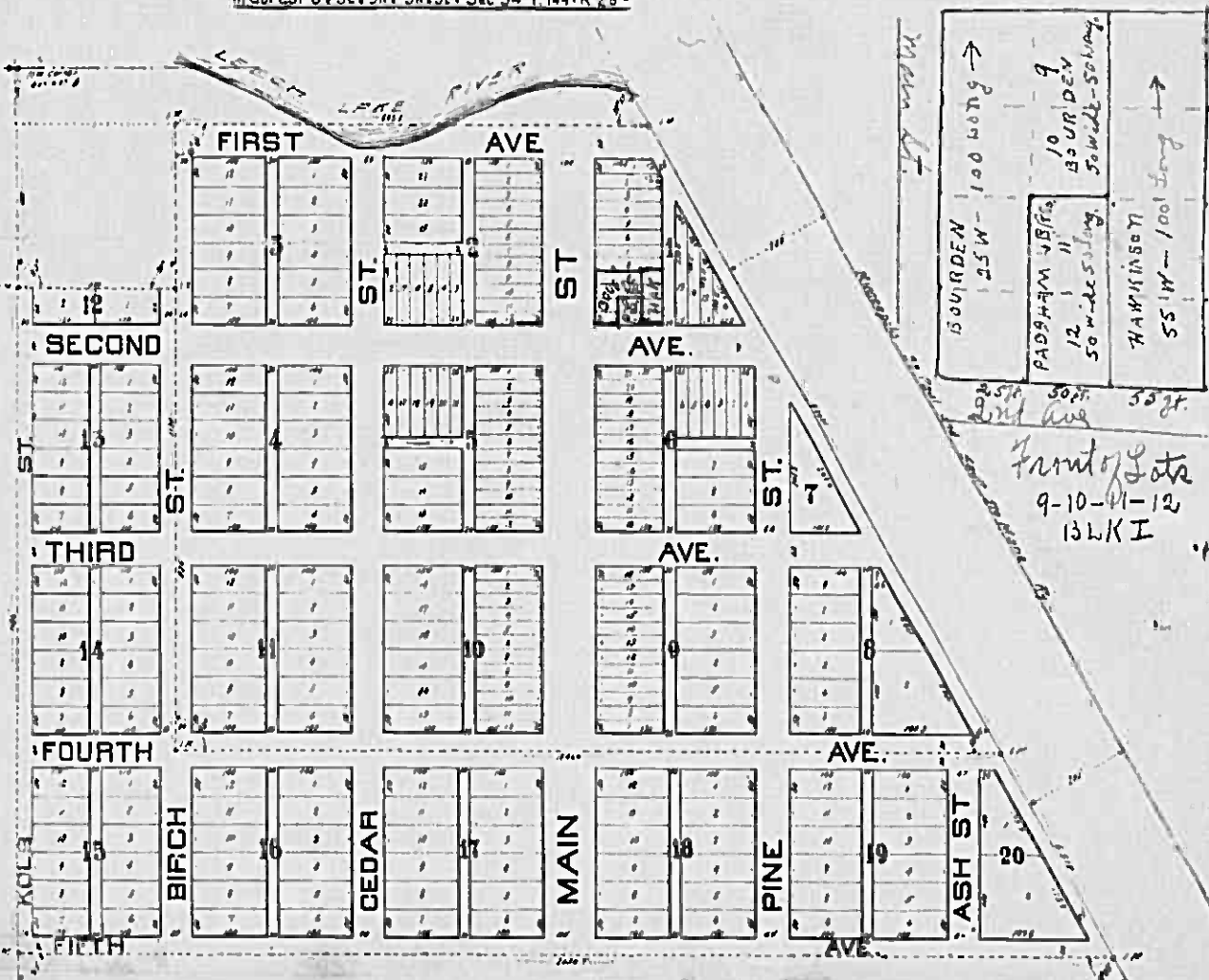
CASS COUNTY

# PLAT OF FEDERAL DAM

CASS Co. MINN.

In Gov Lot 6 & SE 1/4 SW 1/4 SW 1/4 Sec 34 T. 144° R. 28° W

*130 ft East + West.*



## FEDERAL DAM

Splendidly located for commercial advantages near the Government Dam at the outlet of Leech Lake. This town is an important division point on the Soo Line and will grow rapidly to commercial importance.

For further information apply to

**J. M. BEST,**

**Or Local Townsite Agent,  
FEDERAL DAM, MINN.**

Townsite Agent,  
"SOO LINE," MINNEAPOLIS, MINN.

Auditor's Office, Cass County, Minnesota.

I, C. D. BACON, Auditor of Cass County and State of Minnesota, do hereby certify that the following is a correct list of the taxes levied on the Real and Personal Property in the Village of Federal Dam for the year 1921.

Witness my hand and official seal this 31st day of December, 1921.

(SEAL)

C. D. Bacon  
County Auditor.

Treasurer's Office, Cass County, Minnesota.

Received this, the first Monday (being the 2nd day of January, A. D. 1922) of C. D. BACON, Auditor of Cass County, Minnesota, the Tax List of all taxable Real and Personal Property in the Village of Federal Dam, in said County for the year A. D. 1921, as specified above, and amounting to \$4,894.44 DOLLARS.

W. T. Keown  
County Treasurer.

Office of County Treasurer, Cass County, Minnesota.

To C. D. BACON, County Auditor.

Sir: I herewith return to you the Tax List for the Village of Federal Dam in said Cass County, for the year 1921, heretofore received from you. I certify that I have compared the same with the duplicate receipts in your office, and have written opposite the amount of each tax so received the words "One Half Paid," or "Paid in Full," as the case may be, and the number of my receipt given in discharge of said tax, and each tract or lot of Real Property against which the taxes remain unpaid is delinquent for said year.

W. T. Keown  
County Treasurer.

Auditor's Office, Cass County, Minnesota.

I hereby certify that on the first Monday in January, 1923, I received of W. T. KEOWN, County Treasurer, the Tax List of the Village of Federal Dam in said County of Cass for the year 1921, and that I have compared the said list with the statements received for by said Treasurer, which are on file in my office, and that each tract or lot of Real Property therein against which the taxes, or any part thereof, remains unpaid, are delinquent for said year.

C. D. Bacon  
By E. L. Olson, Deputy  
County Auditor.

### TABULAR SCHEDULE OF VALUATIONS

LEVIED IN THE Village OF Federal Dam

No. of School Dist.	Total Acres	VALUATION BY SCHOOL DISTRICTS					RATE OF STATE TAXES					RATE OF COUNTY TAXES										RATE OF <u>Town</u> TAXES									
		Av. Value per acre Dollars	Value of Lands other than Town Lots including Structures Dollars	Value of Town and City Lots including Structures Dollars	Personal Property Dollars	Total Value of all Property Except Money and Credits Dollars	State Rev. Mills	State Sch'l Mills	Tchr. Ins. & Ret. Mills	Total Rate of State Tax Mills	Co. Rev. Mills	Co. R&B Mills	Poor Mills	Bond & Int. Mills	Skgs. Mills	Co. Bldg. Mills	Total Rate of Co. Tax Mills	Village Rev. Mills	Town R&B Mills	Town Poor Mills	Town I Mill Drag Mills	Village State Loan Mills	Town Bldg. Mills	Town Fire Patrol Mills	Total Rate of Town Taxes Mills						
																										1 Mill	2 Mill	3 Mill	4 Mill	5 Mill	6 Mill
2000	653.45	1662	10565	31915	15646	245	123	.05	4.23	5.	8.92	122	6.05	743	.25	29.5	20.					1.57			27.37						
Total																															

### RATES AND TAXES

COUNTY OF CASS, STATE OF MINNESOTA.

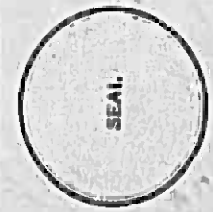
RATE OF SCHOOL TAXES						Total Rate of all Taxes	TAXES LEVIED						
School Local 1 Mill	Sch'l Spec'l	Sch'l State Loan	Total Rate of Sch'l Taxes		Mills		LOCAL 1 MILL AND SPECIAL SCHOOL TAXES BY DISTRICTS			ALL OTHER TAXES			
1 Mill	Mills	Mills	Mills	Mills	Mills	Local 1 Mill	Special	State Loan	Total School Tax	FUNDS	Rate	Amounts	
1.	25	3.	2.	31.	86.58					State Revenue		16646	
										State School		6420	
										State Teachers Ins. & Ret.		252	
										County Revenue		25213	
										County Road and Bridge		50332	
										County Poor		6854	
										Bond and Interest		31507	
										Sinking Building		11925	
										Maintenance		1411	
												6094	
										Town Revenue		112852	
										Town Road and Bridge			
										Town Poor			
										Town 1 Mill Drag			
										Town State Loan		7730	
										Town Building			
										Town Fire Patrol			
										School Local 1 Mill		5643	
										School Special		141065	
										School State Loan		16923	
										School Interest		11285	
										S. R. H. & H. S.		942	
MONEYS AND CREDITS													
						Valuation	Amt. of Tax						
						17128	5738						
TOTALS												489479	

Total Levy, \$49,466.12. Book Footings, \$49,466.06

I, C. D. BACON, Auditor of said County and State aforesaid, do hereby certify that the foregoing is a true and correct schedule, showing the valuation of all the taxable property in the Village of Federal Dam in said County, the several rates of taxation and totals of the several Tax Funds levied thereon for the year A. D. 1921.

Witness my hand and official seal this 2<sup>nd</sup> day of January, A. D. 1922.

C. D. Bacon  
County Auditor.





Tax List of Real Property in the \_\_\_\_\_ of \_\_\_\_\_

Cass County, Minnesota, for Taxes for the Year 1921.

IN WHOSE NAME ASSESSED	TO WHOM TRANSFERRED	Sold for Taxes	SUBDIVISION	No. of Acres Sec. Town or Ring. Lot Block Acres 100's	VALUATION	No. School Dist.	School District No. Rate	School District No. Rate	School District No. Rate	Highway Ditch No.	Ditch No.	Ditch No.	Ditch No.	TOTAL TAXES	PAID	WHEN PAID	No. of Receipt	March Settlement	June Settlement	Penalty	November Settlement	Penalty	Collections to First Monday in January	Penalty	Delinquent on First Monday in January	REMARKS
Village of Federal Hill				1 1	40									346												
				2	40									346												
				3	40									346												
				4	40									346												
				5	40									346												
				6	40									346												
				7	40									346												
				8	40									346												
Chas. N. Bourdon			w. 75' of lot 9	9	63									346												
Chas. N. Bourdon			w. 25' of lot 10	10	63									545	Paid in Full	MAY 31 1922	7964									
				11	63																					
				12	63																					
Village of Federal Hill	J. Vessel Johnson		E. 55' of lots 9-10-11 & 12	13	149									1275	Paid in Full	MAY 31 1922	8763									
R. B. Padgham			E. 50' of W. 75 ft. of lot 11 & 12	14	150									1299	1st. Half Paid	MAY 30 1922	5353									
B. L. Fairbanks				15	40									316												
M. Young				16	40									346	2nd Half Paid	MAY 31 1922										
				17	1240									10736	2nd Half Paid	MAY 31 1922	12640									
				18	110									346	1st. Half Paid	MAY 31 1922	8289									
				19	160									346	2nd Half Paid	MAY 31 1922										
				20	160									346												
					2480									24469												

Example

Paid in Full MAY 31 1922 7964  
 Paid in Full MAY 31 1922 8763  
 1st. Half Paid MAY 30 1922 5353  
 2nd Half Paid MAY 31 1922 12640  
 1st Half Paid MAY 31 1922 8289  
 2nd Half Paid MAY 31 1922

8831 5714

Tax List of Real Property in the \_\_\_\_\_ of \_\_\_\_\_

Cass County, Minnesota, for Taxes for the Year 1921.

IN WHOSE NAME ASSESSED	TO WHOM TRANSFERRED	Sold for Taxes	SUBDIVISION	No. of Acres		VALUATION	No. School Dist.	School District No. Rate	School District No. Rate	School District No. Rate	Highway Ditch No.	Ditch No.	Ditch No.	Ditch No.	TOTAL TAXES	PAID	WHEN PAID	No. of Receipt	March Settlement	June Settlement	Penalty	November Settlement	Penalty	Collections to First Monday in January	Penalty	Delinquent on First Monday in January	REMARKS	
				Acres	100's																							Dollars
Village of Federal Dam					1 2	to									346													
					2	to									346													
					3	to									346													
					4	to									346													
					5	to									346													
					6	to									346													
					7	to									346													
					8	to									346													
					9	to									346													
					10	to									346													
Chas. N. Boudon					11	to									346													
C. N. Hilleboe					12	to									346													
Chas. N. Boudon					13	to									3810													
					14	to									643													
E. M. Cannon					15	to									346													
					16	to									346													
					17	to									1385													
					18	to									3810													
Laura J. Hiddell					19	to									346													
R. J. Coughlin					20	to									346													
A. E. Payne					21	to									3377													
A. E. Payne					22	to									4589													
					23	to									22854													

Exempt to

Exempt

Exempt

348 346-52  
246  
346

End Half Paid JUL 31 1922  
1st. Half Paid MAY 31 1922  
End Half Paid JUL 31 1922  
1st. Half Paid MAY 31 1922

2051 ✓ 725 ✓

693 ✓

692 ✓

797 643-1.04  
2191 1925-2.86  
199 193-2.26

1589 ✓ 1688 ✓

100  
18 17.88 due next year

7996 2939

100





Tax List of Real Property in the \_\_\_\_\_ of \_\_\_\_\_

Cass County, Minnesota, for Taxes for the Year 1921.

IN WHOSE NAME ASSESSED	TO WHOM TRANSFERRED	Sold for Taxes	SUBDIVISION	No. of Acres		VALUATION	No. School Dist.	School District No. Rate Mills	School District No. Rate Mills	School District No. Rate Mills	Highway Ditch No.	Ditch No.	Ditch No.	Ditch No.	TOTAL TAXES	PAID	WHEN PAID	No. of Receipt	March Settlement	June Settlement	Penalty	November Settlement	Penalty	Collections to First Monday in January	Penalty	Delinquent on First Monday in January	REMARKS	
				Acres	100's																							Dollars
Miriam S. McNamee						14									191		Feb 3 1923	15099										
				1	4	50									433	1st. Half Paid	MAY 31 1922										Abatement # 286	
				2		12									104	2nd. Half Paid	MAY 31 1922	81199									"	
				3		187									1619	1st. Half Paid	MAY 31 1922	15099									"	
Iri State Land Co.				4		100									2075	2nd. Half Paid	MAY 31 1922										"	
John E. Schmitt				5		60									866													
Dennis W. Hytten				6		365									512	1st. Half Paid	MAY 31 1922	8769										
Sarah E. Hess				7		365									3160	2nd. Half Paid	OCT 31 1922	17634										
Elizabeth Hawley				8		360									3160	1st. Half Paid	MAY 31 1922	7961										
Oliver Henderson				9		730									3117													
Peter Neumann				10		440									1991	2nd. Half Paid	MAY 31 1922	15259										
Iri State Land Co.				11		90									3810	1st. Half Paid	MAY 31 1922	8442										
				12		140									747	2nd. Half Paid	MAY 31 1922	15259										
				13		130									346													
				14											1126													
				15																								
				16																								
				17																								
				18																								
				19																								
				20																								

2560

22164

6896

5844

3585 3117 - 468

Abatement # 351

Tax List of Real Property in the \_\_\_\_\_ of \_\_\_\_\_

Cass County, Minnesota, for Taxes for the Year 1921.

IN WHOSE NAME ASSESSED	TO WHOM TRANSFERRED	Sold for Taxes	SUBDIVISION	No. of Acres		VALUATION	No. School Dist.	School District No. Rate	School District No. Rate	School District No. Rate	Highway Ditch No.	Ditch No.	Ditch No.	Ditch No.	TOTAL TAXES	PAID	WHEN PAID	No. of Receipt	March Settlement	June Settlement	Penalty	November Settlement	Penalty	Collections to First Monday in January	Penalty	Delinquent on First Monday in January	REMARKS																									
				Sec. or Lot	Town or Block																							Acres	100's	Dollars	\$	cts.	\$	cts.	\$	cts.	\$	cts.	\$	cts.	\$	cts.	\$	cts.	\$	cts.	\$	cts.	\$	cts.	\$	cts.
B. L. Fairbanks				1	5	40									346	1																																				
Iri State Land Co.				2		40									346	2																																				
B. L. Fairbanks				3		280									2424	3																																				
Chas. N. Bourdon				4		40									346	4	Paid in Full	MAY 31 1922																																		
"				5		40									346	5	Paid in Full	MAY 31 1922																																		
"				6		40									346	6	Paid in Full	MAY 31 1922	8115		1730																															
"				7		40									346	7	Paid in Full	MAY 31 1922																																		
"				8		40									346	8	Paid in Full	MAY 31 1922																																		
"				9		40									346	9	Paid in Full	DEC 22 1922	13347					692	69																											
Julia Tobiasson				10		40									346	10	Paid in Full	DEC 22 1922																																		
"				11		40									346	11																																				
Jos. Brennan				12		50									433	12																																				
Albert B. Almstedt				13		300									2597	13	Paid in Full	DEC 22 1922	13347					4597	400																											
B. A. Harmon				14		280									2424	14	2nd Half Paid	OCT 12 3 1922	10376																																	
Peter Cronquist				15		720									2424	15	1st. Half Paid	MAY 31 1922	8117				10120		17120																											
Chas. N. Bourdon				16		650									2334	16	Paid in Full	MAY 11 1922	3886				6734																													
"				17		40									5628	17									6472	5628	8047																									
Melvin Olson				18		40									346	18	Paid in Full	MAY 31 1922	8115				692																													
"				19		280									346	19	Paid in Full	MAY 31 1922																																		
"				20		280									2424	20	2nd Half Paid	SEP 28 1922	9701				7773		51250																											
Village of Federal Dam				21		120									2424	21	1st. Half Paid	MAY 31 1921	6015																																	
						120									1639																																					
						5240									29779									12591		3337		3289																								

*In Receipt.*

Tax List of Real Property in the \_\_\_\_\_ of \_\_\_\_\_

Cass County, Minnesota, for Taxes for the Year 1921.

IN WHOSE NAME ASSESSED	TO WHOM TRANSFERRED	Sold for Taxes	SUBDIVISION	No. of Acres		VALUATION	No. School Dist.	School District No. Rate	School District No. Rate	School District No. Rate	Highway Ditch No.	Ditch No.	Ditch No.	Ditch No.	TOTAL TAXES	PAID	WHEN PAID	No. of Receipt	March Settlement	June Settlement	Penalty	November Settlement	Penalty	Collections to First Monday in January	Penalty	Delinquent on First Monday in January	REMARKS	
				Acres	100's																							Dollars
Arthur H. Chalmers				1	6	680									5887 1	✓												
Wm. Schluft	E. L. Schluft			2		120									1039 2	✓												
				3		680									5887 3	Paid in Full	APR 13 1922											
				4		400									3463 4	Paid in Full	APR 13 1922	325/25										
				5		120									1039 5	Paid in Full	APR 13 1922								10389 ✓			
Jesse H. North				6		40									346 6	Paid in Full	APR 13 1922											
John J. Kane				7		40									346 7	Paid												
A. J. Lee				8		40									346 8	Paid		16091										
B. L. Fairbanks				9		40									3810 9	Paid	MAY 31 1922	315839										
				10		40									346 10	✓												
Chas. N. Bourdon				11		40									346 11	✓												
				12		40									346 12	Paid in Full	MAY 31 1922											
				13		40									346 13	Paid in Full	MAY 31 1922											
				14		40									346 14	Paid in Full	MAY 31 1922											
				15		40									346 15	Paid in Full	MAY 31 1922	1816										
				16		40									346 16	Paid in Full	MAY 31 1922	24226										
				17		40									346 17	Paid in Full	MAY 31 1922											
				18		40									346 18	Paid in Full	MAY 31 1922											
H. J. Rogers	J. H. Putnam			19		400									3463 19	Paid in Full	OCT 20 1922	13774										
Everett Fairbanks				20		680									5887 20	1st Half Paid	MAY 3 1922	8784								3463 3 46		
						4000									34627													
																				15928		3116					3463	



Tax List of Real Property in the \_\_\_\_\_ of \_\_\_\_\_

Cass County, Minnesota, for Taxes for the Year 1921.

IN WHOSE NAME ASSESSED	TO WHOM TRANSFERRED	Sold for Taxes	SUBDIVISION	Sec. or Lot	Town or Block	No. of Acres		VALUATION	No. School Dist.	School District No. Rate	School District No. Rate	School District No. Rate	Highway Ditch No.	Ditch No.	Ditch No.	Ditch No.	TOTAL TAXES	PAID	WHEN PAID	No. of Receipt	March Settlement	June Settlement	Penalty	November Settlement	Penalty	Collections to First Monday in January	Penalty	Delinquent on First Monday in January	REMARKS						
						Acres	100's																							Dollars	\$ cts.	\$ cts.	\$ cts.	\$ cts.	\$ cts.
Wm. Brown				1	1	9		40									346																		
				2	2			32									277																		
				3	3			32									277																		
Trio State Land Co.	Fred Jones			4	4			32									277																		
Emmett B. Fuller				5	5		184	272									277																		
Pioneer Land Co.				6	6			40										346																	
Chas. M. Boudon					7	7			32									277																	
					8	8			32									277																	
				9	9			32									277																		
				10	10			32									277																		
				11	11			32									277																		
				12	12			32									277																		
				13	13			32									277																		
				14	14			32									277																		
				15	15			32									277																		
				16	16			32									277																		
				17	17			32									277																		
Trio State Land Co.				18	18			32									277																		
				19	19																														
				20	20																														
								832									7202																		

346 1 Paid in Full MAY 31 1922  
 277 2 Paid in Full MAY 31 1922  
 277 3 Paid in Full MAY 31 1922  
 277 4 Paid  
 2355 5 Paid  
 18972

346 6<sup>2</sup> End Half Paid OCT 31 1922  
 277 7<sup>2</sup> End Half Paid OCT 31 1922  
 277 8<sup>2</sup> End Half Paid OCT 31 1922  
 277 9<sup>2</sup> End Half Paid OCT 31 1922  
 277 10<sup>2</sup> End Half Paid OCT 31 1922  
 277 11<sup>2</sup> End Half Paid OCT 31 1922  
 277 12<sup>2</sup> End Half Paid OCT 31 1922  
 277 13<sup>2</sup> End Half Paid OCT 31 1922  
 277 14<sup>2</sup> End Half Paid OCT 31 1922  
 277 15<sup>2</sup> End Half Paid OCT 31 1922  
 277 16<sup>2</sup> End Half Paid OCT 31 1922  
 277 17<sup>2</sup> End Half Paid OCT 31 1922  
 277 18 Paid May 31 1923 15742

1832 1573 Abatement # 277  
 2.39

1574 ✓ 1573 ✓

2424 1523













Tax List of Real Property in the \_\_\_\_\_ of \_\_\_\_\_

Cass County, Minnesota, for Taxes for the Year 1921.

IN WHOSE NAME ASSESSED	TO WHOM TRANSFERRED	Sold for Taxes	SUBDIVISION	Sec. or Lot	Town or Block	Reg.	No. of Acres		VALUATION	No. School Dist.	School District No.	School District Rate	School District Rate	School District Rate	Highway Ditch No.	Ditch No.	Ditch No.	Ditch No.	TOTAL TAXES	PAID	WHEN PAID	No. of Receipt	March Settlement	June Settlement	Penalty	November Settlement	Penalty	Collections to First Monday in January	Penalty	Delinquent on First Monday in January	REMARKS																
							Acres	100's																								Dollars	\$ cts.	\$ cts.	\$ cts.	\$ cts.	\$ cts.	\$ cts.	\$ cts.	\$ cts.	\$ cts.	\$ cts.	\$ cts.	\$ cts.	\$ cts.	\$ cts.	\$ cts.
Saw N. Prentiss				1	18				30										260		2nd Half Paid	100	31	1922																							
B. A. Harmon				2					320										277		1st. Half Paid	MAY	31	1922																							
Saw N. Prentiss				3					30										260		2nd Half Paid	MAY	31	1922	176	74																					
"				4					30										260		1st. Half Paid	MAY	31	1922	79	52																					
"				5					30										260		2nd Half Paid	MAY	31	1922																							
"				6					30										260		1st. Half Paid	MAY	31	1922																							
Wm. Bartlett John Giles				7					30										260		1st. Half Paid	MAY	31	1922																							
John Giles				8					30										260		Paid		17908																								
John Roberts				9					160										1385		1st. Half Paid	MAY	31	1922	15900																						
Christ Steinhart				10					80										693		2nd Half Paid	MAY	31	1922	17637																						
B. A. Harmon				11					30										260		1st. Half Paid	MAY	31	1922	8773																						
Iri State Land Co				12					30										260		Paid in Full	MAY	1	1922	3886																						
Federal Dams State Bank				12					30										260		Paid in Full	MAY	1	1922	3980																						
"				12					150										1299		Paid in Full	MAY	31	1922																							
"				14					30										260		Paid in Full	MAY	31	1922																							
Iri State Land Co				15					30										260		Paid in Full	MAY	31	1922																							
"				16					30										260		Paid in Full	MAY	31	1922																							
"				17					30										260		Paid in Full	MAY	31	1922																							
"				18					30										260		Paid in Full	MAY	31	1922																							
"				19					30										260		Paid in Full	MAY	31	1922																							
"				20					30										260		Paid in Full	MAY	31	1922																							
									1190										10308																												
																					6021	2382																									



Tax List of Real Property in the \_\_\_\_\_ of \_\_\_\_\_

Cass County, Minnesota, for Taxes for the Year 1921.

101251 - FREE VALUE; BARNARD, MINN.

IN WHOSE NAME ASSESSED	TO WHOM TRANSFERRED	Sold for Taxes	SUBDIVISION	Sec. or Lot	Town or Block	Ring	No. of Acres		VALUATION	No. School Dist.	School District	School District	School District	Highway Ditch No.	Ditch No.	Ditch No.	Ditch No.	TOTAL TAXES	PAID	WHEN PAID	No. of Receipt	March Settlement	June Settlement	Penalty	November Settlement	Penalty	Collections to First Monday in January	Penalty	Delinquent on First Monday in January	REMARKS				
							No. Rate	No. Rate			No. Rate	\$	cts.																		\$	cts.	\$	cts.
E. L. Warren			Kalt's Addition		1			20										173 1																
Addie M. Jensen					2			20										173 2																
					3			20										173 3																
Kalt Investment Co.					4			18										156 4																
"					5			18										156 5	Paid															
"					6			18										156 6																
"					7			18										156 7																
"					8			18										156 8																
"					9			18										156 9	Paid															
"					10			18										156 10																
"					11			17										147 11																
"					12			17										147 12																
"					1 2			20										173 13																
"					2			20										173 14																
"					3			20										173 15	Paid															
"					4			20										173 16																
"					5			20										173 17																
"					6			20										173 18																
Miriam S. McNaie					7			20										5V 19																
"					8			20										5V 20																
								20										3289																

Abatement # 286

398

Tax List of Real Property in the \_\_\_\_\_ of \_\_\_\_\_

Cass County, Minnesota, for Taxes for the Year 1921.

IN WHOSE NAME ASSESSED	TO WHOM TRANSFERRED	Sold for Taxes	SUBDIVISION	Sec. or Lot	Town or Block	Rng.	No. of Acres Acres 100's	VALUATION Dollars	No. School Dist.	School District No. Rate Mills	School District No. Rate Mills	School District No. Rate Mills	Highway Ditch No.	Ditch No.	Ditch No.	Ditch No.	TOTAL TAXES \$ cts.	PAID Month Day Year	No. of Receipt	March Settlement	June Settlement	Penalty	November Settlement	Penalty	Collections to First Monday in January	Penalty	Delinquent on First Monday in January	REMARKS
W. W. S. Mc Nair			Kalb's Addition	9	20		20	20									51 798	1st. Half Paid MAY 31 1922	8114		26						Abatement # 286	
A. C. Clark, Martin, Hazel, Audrey, Velva & Dorothy Clark			Kalb's Addition	10	20		20	20									173	2 Paid in Full MAY 31 1922										
Martin Hazel, Audrey, Velva & Dorothy Clark			Kalb's Addition	11	20		20	20									173	3 Paid in Full MAY 31 1922	795		519							
Peter Neumann			Kalb's Addition	12	20		20	20									173	4 Paid in Full MAY 31 1922										
Kalb Investment Co.			Kalb's Addition	1 3	20		20	20									173	5 2nd half pd. mar. 9 1923			15259							
			Kalb's Addition	3	20		20	20									173	6 2nd half pd. mar. 9 1923										
			Kalb's Addition	8	20		20	20									173	7 2nd half pd. mar. 9 1923										
			Kalb's Addition	1	20		20	20									173	8 2nd half pd. mar. 9 1923			15259							
			Kalb's Addition	5	20		20	20									173	9 2nd half pd. mar. 9 1923										
			Kalb's Addition	6	20		20	20									173	10 2nd half pd. mar. 9 1923										
Effie Brennick			Kalb's Addition	7	20		20	20									173	11 Paid in Full MAY 31 1922										
Louise Brennick			Kalb's Addition	8	20		20	20									173	12 Paid in Full MAY 3 1922										
Esther Brennick			Kalb's Addition	9	20		20	20									173	13 Paid in Full MAY 3 1922										
"			Kalb's Addition	10	20		20	20									173	14 Paid in Full MAY 3 1922										
Kalb Investment Co.			Kalb's Addition	11	20		20	20									173	15 Paid in Full MAY 3 1922										
			Kalb's Addition	12	20		20	20									173	16 Paid in Full MAY 3 1922										
			Kalb's Addition	1 4	20		20	20									173	17 2nd Half Paid DEC 6 1922										
			Kalb's Addition	2	20		20	20									173	18 1st Half Paid DEC 6 1922	13431						260	46		
			Kalb's Addition	3	20		20	20									173	19 2nd Half Paid DEC 6 1922	8413									
			Kalb's Addition					390									3287											

1929 260

Tax List of Real Property in the \_\_\_\_\_ of \_\_\_\_\_

Cass County, Minnesota, for Taxes for the Year 1921.

IN WHOSE NAME ASSESSED	TO WHOM TRANSFERRED	Sold for Taxes	SUBDIVISION	No. of Acres		VALUATION	No. School Dist.	School District	School District	School District	Highway Ditch No.	Ditch No.	Ditch No.	Ditch No.	TOTAL TAXES	PAID	WHEN PAID	No. of Receipt	March Settlement	June Settlement	Penalty	November Settlement	Penalty	Collections to First Monday in January	Penalty	Delinquent on First Monday in January	REMARKS																																
				Sec. or Lot	Town or Block			Acres	100's	No. Rate																		No. Rate	No. Rate																														
<i>Kalbe Addition</i>						Dollars																																																					
																												<i>Kalbe Investment Co.</i>																															
<i>Strass L. M. Nais</i>						Dollars																																																					

1st Half Paid DEC 6 1922  
 2nd Half Paid DEC 6 1922  
 1st Half Paid DEC 6 1922  
 2nd Half Paid DEC 6 1922  
 1st Half Paid DEC 6 1922  
 2nd Half Paid DEC 6 1922  
 1st Half Paid DEC 6 1922  
 2nd Half Paid DEC 6 1922  
 1st Half Paid DEC 6 1922  
 2nd Half Paid DEC 6 1922  
 1st Half Paid DEC 6 1922  
 2nd Half Paid DEC 6 1922  
 1st Half Paid MAY 3 1922  
 2nd Half Paid MAY 3 1922  
 1st Half Paid MAY 3 1922  
 2nd Half Paid MAY 3 1922  
 1st Half Paid MAY 3 1922  
 2nd Half Paid MAY 3 1922  
 1st Half Paid MAY 3 1922  
 2nd Half Paid MAY 3 1922  
 1st Half Paid MAY 3 1922  
 2nd Half Paid MAY 3 1922

Abatement # 486

1298 778

Tax List of Real Property in the \_\_\_\_\_ of \_\_\_\_\_

Cass County, Minnesota, for Taxes for the Year 1921.

101291-TREE PRESS, MARSHFIELD, WIS.

IN WHOSE NAME ASSESSED	TO WHOM TRANSFERRED	SOLD for Taxes	SUBDIVISION	Sec. or Lot	Town or Block	No. of Acres	VALUATION	No. School Dist.	School District			Highway Ditch No.	Ditch No.	Ditch No.	Ditch No.	TOTAL TAXES	PAID	WHEN PAID	No. of Receipt	March Settlement	June Settlement	Penalty	November Settlement	Penalty	Collections to First Monday in January	Penalty	Delinquent on First Monday in January	REMARKS			
									No. Rate	No. Rate	No. Rate																				
							Dollars		\$ cts.	\$ cts.	\$ cts.	\$ cts.	\$ cts.	\$ cts.	\$ cts.																
<i>Norman S. Mc Nair</i>			<i>Holds Addition</i>				<i>22</i>								<i>52</i>	<i>15094</i>	<i>1</i>	<i>MAY 3 1 1922</i>	<i>8114</i>								<i>Abatement # 286</i>				
							<i>20</i>													<i>52</i>	<i>15097</i>	<i>2</i>	<i>MAY 3 1 1922</i>	<i>8114</i>							
<i>Annie Mc Nair</i>							<i>22</i>								<i>52</i>	<i>15094</i>	<i>4</i>	<i>MAY 3 1 1922</i>	<i>8114</i>												
							<i>20</i>													<i>52</i>	<i>15097</i>	<i>5</i>	<i>MAY 3 1 1922</i>	<i>8114</i>							
							<i>20</i>													<i>52</i>	<i>15097</i>	<i>6</i>	<i>MAY 3 1 1922</i>	<i>8114</i>							
							<i>20</i>													<i>52</i>	<i>15097</i>	<i>7</i>	<i>MAY 3 1 1922</i>	<i>8114</i>							
							<i>20</i>													<i>52</i>	<i>15097</i>	<i>8</i>	<i>MAY 3 1 1922</i>	<i>8114</i>							
							<i>20</i>													<i>52</i>	<i>15097</i>	<i>9</i>	<i>MAY 3 1 1922</i>	<i>8114</i>							
							<i>20</i>													<i>52</i>	<i>15097</i>	<i>10</i>	<i>MAY 3 1 1922</i>	<i>8114</i>							
							<i>20</i>													<i>52</i>	<i>15097</i>	<i>11</i>	<i>MAY 3 1 1922</i>	<i>8114</i>							
							<i>20</i>													<i>52</i>	<i>15097</i>	<i>12</i>	<i>MAY 3 1 1922</i>	<i>8114</i>							
							<i>20</i>													<i>52</i>	<i>15097</i>	<i>13</i>	<i>MAY 3 1 1922</i>	<i>8114</i>							
							<i>20</i>													<i>52</i>	<i>15097</i>	<i>14</i>	<i>MAY 3 1 1922</i>	<i>8114</i>							

*Total Platted ->*

*280*  
*31915*

*2422*  
*276295*

*364*





