

ASSESSMENT & TAX LIST

East Gull Lake

1943

Assessor's

FORM 315

NAME OF OWNER

Treasurer's Office, Cass County, Minnesota

RECEIVED this, the first Monday (being the 3rd day) of January,
 A. D. 1944, of J. G. Peterson, Auditor of said County, Minnesota,
 the Tax List of all Taxable Real and Personal Property in the Township
of East Gull Lake in said County for the year A. D. 1943,
 as specified above and amounting to eleven thousand one hundred
eighty 7 $\frac{80}{100}$ dollars.
W. J. McKeown
 County Treasurer.

Office of County Treasurer, Cass County, Minnesota

To J. G. Peterson, County Auditor:

Sir:—I herewith return to you the Tax List for the Township
of East Gull Lake in said County for the year 1943, heretofore
 received from you. I certify that I have compared the same with the duplicate receipts in
 your office, and have written opposite the amount of each tax so received the words "First
 Quarter Paid", "Second Quarter Paid", "Third Quarter Paid" or "Paid in full" as the
 case may be, and the number of my receipt given in discharge of said tax, and each tract
 or lot of real property against which the taxes remain unpaid is delinquent for said year.
 Yours respectfully,
W. J. McKeown
 County Treasurer.

Auditor's Office, Cass County, Minnesota

I, _____ Auditor of said County, and State
 of Minnesota, do hereby certify that the following is a correct list of the Taxes levied on the
 Real and Personal Property in the _____ of _____
 for the year 1943.

WITNESS my hand and official seal, the _____ day of _____
 1944.

(SEAL) _____ County Auditor.

Auditor's Office, Cass County, Minnesota

I hereby certify that on the first Monday in January 1945, I received of _____
 _____ County Treasurer, the Tax List of the _____
 of _____ in said
 County for the year 1943; that I have compared the said list with the Statements receipted
 for by said Treasurer, which are on file in my office, and that each tract or lot of real
 property therein against which the taxes, or any part thereof, remains unpaid are delin-
 quent for said year.

(SEAL) _____ County Auditor.

NAME OF OWNER

TABULAR SCHEDULE OF VALUATIONS,

LEVIED IN THE Township of East Gull Lake

RATES AND TAXES

COUNTY OF CASS, STATE OF MINNESOTA

123.6
42
127.6

School District No.	VALUATION BY SCHOOL DISTRICTS					RATE OF STATE TAXES					RATE OF COUNTY TAXES					RATE OF TOWN TAXES																		
	Valuation of Money and Credits	Value of Lands other than Town Lots including Structures	Value of Town and City Lots including Structures thereon	Personal Property	Total Value of all Property except Money and Credits	State Rev.	State Sch'l	Tchr. Ins.	State Debt	Total Rate of State Tax	Rev.	R. & B.	Welfare	Bonds and Int.	Sewer	Total Rate of County Tax	Rev.	R. & B.	Drag Tax	State Loan	Total Rate of Town Tax													
	Dollars	Dollars	Dollars	Dollars	Dollars	Mills	Mills	Mills	Mills	Mills	Mills	Mills	Mills	Mills	Mills	Mills	Mills	Mills	Mills	Mills	Mills	Mills	Mills	Mills	Mills	Mills	Mills	Mills	Mills	Mills	Mills	Mills	Mills	Mills
#24		12723	21951	4022	38696	1.2				1.2	21.7	4.5	35.2	19.4	.6	81.4	2.8	6.	1.		9.8													
#26		24990	21045	3461	49496																4.2													
		37713	42996	7483	88192																													

RATE OF SCHOOL TAXES										TAXES LEVIED									
LOCAL 1 MILL AND SPECIAL SCHOOL TAXES BY DISTRICTS					ALL OTHER TAXES														
Local 1 Mill	Special	State Loan	Total Rate of Sch'l Tax			Total Rate of all Taxes			Local 1 Mill	Special	State Loan	Total School Taxes	FUNDS	Rate	Amounts				
1	30		31	123.6	3872	116090	119962	123.6	127.6		153442	State Revenue,							
1	30		31	123.6	4952	148490						Teachers Insurance,							
												State Debt—Non-Homestead,							
												State Debt—Homestead,		29762					
												County Revenue,		10585					
												County Road and Bridge,		191379					
												County Welfare,		39689					
												Bonds and Interest		310438					
												Sewer		171094					
												Town Revenue,		5293					
												Town Road and Bridge,		24696					
												Town Drag,		52917					
												Town State Loan,		8824					
												School Local 1 Mill,		8824					
												School Special,		264580					
												School State Loan,							
												Money and Credits,							

Total Number of Acres 4373
 State of Minnesota, ss.
 COUNTY OF CASS
 I, *L. H. Peterson*, Auditor of said County and State aforesaid, do hereby certify that the foregoing is a true and correct schedule, showing the valuation of all the taxable property, in the Township of East Gull Lake, in said County, the several rates of Taxation and Totals of the several Tax Funds levied thereon for the year A. D. 1943.
 Witness my hand and official seal, this _____ day of _____ A. D. 1943.
 Total Levy, \$ 11,180.80
 L. H. Peterson, County Auditor.

SEAL

White & Birch Grove on Hill
 Lake Shore
 Lake Bay
 Dekinret
 1943

Assessor's

COLLECTIONS OF TAXES OF 1943, Township OF East Gull Lake, CASS COUNTY, MINNESOTA

FORM 34

NAME OF OWNER

FUNDS	MARCH SETTLEMENT 1943	JUNE SETTLEMENT 1943	NOV. SETTLEMENT 1943	Amount Collected from Nov. 1942 to First Monday in Jan. 1943	REDUCTIONS	Defeated Cancellation	Total Reductions and Collected	BALANCE UNCOLLECTED	ADDITIONS	Total Uncollected to First Monday in January, 1943
State Revenue, State School, Teachers Insurance, State Debt—Non-Homestead, State Debt—Homestead,	4059 1498	12139 4633	8322 3045	205 58						
County Revenue, County Road and Bridge, County Welfare, County Bond and Interest, Sewer	27082 5616 43931 24212 749	83781 17374 135903 74901 2317	55059 11418 87312 49223 1522	1052 218 1707 941 29						
Town Revenue, Town Road and Bridge, Town Drag, Town State Loan,	3495 7488 1248	10811 23165 3861	7104 15224 2537	136 291 49						
School Local 1 Mill, School Special, School State Loan,	1248 37441	3860 115826	2537 76119	49 1455						
Money and Credits,										
	158069	488571	321420	6190	17756	2684			5790	129182

	SCHOOL DISTRICT NO.	LOCAL 1 MILL	SPECIAL	STATE LOAN	TOTALS
MARCH SETTLEMENT	24 26	377 871	11322 26119		11699 26990
Totals		1248	37441		38689
JUNE SETTLEMENT	24 26	1282 2578	38462 77264		9744 79942
Totals		3860	115826		119686
NOVEMBER SETTLEMENT					
NOVEMBER to JANUARY	24 26	31 18	915 540		946 558
Totals		49	1455		1504
ADDITIONS					
REDUCTIONS					
Totals					

Assessment Roll and Tax List of Unplatted Real Property in the Town of East Bull Lake, Unplatted Real Estate Assessed at 33 1/2 Per Cent of True and Full Value; Attached Machinery at 33 1/2 Per Cent of True and Full Value, Homesteads, up to True and Full Value of \$4000, Assessable at 20 per Cent, Class 3B; Remainder at 33 1/2 Per Cent, Class 3.

Cass County, Minnesota, for Taxes for the Year 1943.

Table with columns: IN WHOSE NAME ASSESSED, TO WHOM TRANSFERRED, DESCRIPTION OF PROPERTY, ASSESSOR'S VALUATION, EQUALIZED VALUES, VALUATIONS BY SCHOOL DISTRICTS AS EQUALIZED BY DEPARTMENT OF TAXATION, Rate and Tax Less Homestead Exemption, State Tax on Non-Homestead, TOTAL GENERAL TAX, SPECIAL TAXES, TOTAL TAXES, PAID, WHEN PAID, Number of Receipt, March Settlement 1941, June Settlement 1941, Penalty, November Settlement 1941, Collections to First Monday in January 1945, Delinquent on First Monday in January 1945, Total Delinquent Tax and Penalty, REMARKS.

Edwin H. Butler
A. H. Bachr
Martha H. French
Henry R. White
Nisawa Properties, Inc.
H. R. White
Arthur C. + Dorothy W. Buffington
David Dickson Charbonneau
Henry R. White
Margaret Mc Meekin
Florence H. Winnow
Luther H. + Irene Youngdahl
Elizabeth + Lois White
M. Louise McKay
Anton M. Opasch E. B. Sullivan
Florence French Newell
Grace C. Nelson
Anton M. Opasch E. B. Sullivan
Josephine T. Blomgren

Abate #983
SOLD FOR TAXES

IN WHOSE NAME ASSESSED	TO WHOM TRANSFERRED	DESCRIPTION OF PROPERTY		ASSESSOR'S VALUATION					EQUALIZED VALUES			SOLD FOR TAXES	VALUATIONS BY SCHOOL DISTRICTS AS EQUALIZED BY DEPARTMENT OF TAXATION				Rate and Tax Less Homestead Exemption	State Tax on Non-Homestead	TOTAL GENERAL TAX	SPECIAL TAXES				TOTAL TAXES	PAID	WHEN PAID	Number of Receipt	March Settlement 1944	June Settlement 1944	November Settlement 1944	Penalty	Collections to First Monday in January 1945	Penalty	Delinquent on First Monday in January 1945	Total Delinquent Tax and Penalty	REMARKS			
				True and Full Value of Lands Exclusive of Structures and Improvements	STRUCTURES & IMPROVEMENTS	True and Full Value of Lands Including all Structures, Improvements and Machinery	Assessed Value of Homesteads up to \$1,000 at 20 per cent Class 3B	Assessed Value of Remainder at 33 1/3 per cent Class 3	Total Assessed Value of Lands Including all Structures, Improvements and Machinery	Total Assessed Value as Equalized by the Board of Review	Total Assessed Value as Equalized by the County Board		Total Assessed Value as Equalized by the Department of Taxation	District No. 1	District No. 2	District No. 3				District No. 4	Rate	Rate	Rate														Rate	Rate	Rate
Kingston State Bk. (Matt Le)		1	NE 1/4 of NE 1/4 Lot 1	16	134 x 9	34	80	26							100	1234	42	1276	1																				
Helen H. Butler		2	NW 1/4 of NE 1/4 " 5 less plot			36									153	1888	64	1952	1	PAID IN FULL JUN 5 1944	5496		1952														12 76 1/2 14 04		
Martha H. French Homer A. + Clara L. Auvon		3	SW 1/4 of NE 1/4 " 2			31	65								\$ 100	1234		1234	3	2nd Half Paid NOV 17 1944	1428		617																
Kingston State Bk. (Matt Le)		4	SE 1/4 of NE 1/4			40									100	1234	42	1276	4	1st Half Paid JUN 6 1944	6006		617	617													12 76 1/2 14 04		
		5																	5																				
Helen H. Butler		6	NE 1/4 of NW 1/4 " 4			24	40								1934	23866	812	24678	6	PAID IN FULL JUN 5 1944	5496		24678																
		7	NW 1/4 of NW 1/4																7																				
Reino Baakonon		8	SW 1/4 of NW 1/4			40									\$ 100	1234		1234	8	2nd Half Paid NOV 6 1944	1175		617		617														
Fannie E. Situla		9	SE 1/4 of NW 1/4 " 3 less 11.10 ac.			19	30								225	2776	94	2870	9	1st Half Paid APR 6 1944	3696		2870																
Fannie E. + Mike Situla + Henry + Esther E. Hutchinson		10	11.10 ac. of Lot 3			10									33	408	14	422	10	PAID IN FULL JUN 6 1944	6004		2870																
Matt Fay Nerman + Lota Myrlee Paul		11	NE 1/4 of SW 1/4			40									\$ 280	3456		3456	11	PAID IN FULL AUG 2 1944	9450		3456																
		12	NW 1/4 of SW 1/4			40									\$ 92	1136		1136	12	2nd Half Paid OCT 1 1944	7084		2296																
Jack Terska		13	SW 1/4 of SW 1/4 less 1 ac. school			39									\$ 150	1852		1852	13	1st Half Paid JUN 5 1944	5468		1852																
Oscar Heino		14	SE 1/4 of SW 1/4			40									\$ 60	740		740	14	2nd Half Paid OCT 1 1944	5468		740																
		15																	15																				
Eino Tuomi + Alma Tuomi		16	NE 1/4 of SE 1/4			40									\$ 200	2468		2468	16	PAID IN FULL MAY 6 1944	4206		2468																
Martha H. French Homer A. + Clara L. Auvon		17	NW 1/4 of SE 1/4			40									\$ 30	370		370	17	2nd Half Paid NOV 17 1944	1142		370																
		18	SW 1/4 of SE 1/4			40									\$ 30	370		370	18	1st Half Paid JUN 6 1944	6006		370	370															
Chas. Orvola		19	SE 1/4 of SE 1/4			40									120	1480	50	1530	19	2nd Half Paid NOV 17 1944																			
		20																	20	PAID IN FULL JUN 2 1944	5178		1530																
						555	15																																

Assessment Roll and Tax List of Unplatted Real Property in the _____ of _____ Unplatted Real Estate Assessed at 33 1/2 Per Cent of True and Full Value; Attached Machinery at 33 1/2 Per Cent of True and Full Value, Homesteads, up to True and Full Value of \$1000, Assessable at 20 per Cent, Class 3B; Remainder at 33 1/2 Per Cent, Class 3.

Cass County, Minnesota, for Taxes for the Year 1943.

Table with columns: IN WHOSE NAME ASSESSED, TO WHOM TRANSFERRED, DESCRIPTION OF PROPERTY, ASSESSOR'S VALUATION, EQUALIZED VALUES, VALUATIONS BY SCHOOL DISTRICTS AS EQUALIZED BY DEPARTMENT OF TAXATION, SOLD FOR TAXES, SPECIAL TAXES, TOTAL TAXES, PAID, WHEN PAID, Number of Receipt, March Settlement 1944, June Settlement 1944, Penalty, November Settlement 1944, Penalty, Collections to First Monday in January 1945, Penalty, Delinquent on First Monday in January 1945, Total Delinquent Tax and Penalty, REMARKS.

FILED
Oakhurst
Lake Shore
White's Sub-Div. Birch Grove on 7/1

Assessment Roll and Tax List of Unplatted Real Property in the _____ of _____, Unplatted Real Estate Assessed at 33 1/3 Per Cent of True and Full Value; Attached Machinery at 33 1/3 Per Cent of True and Full Value, Homesteads, up to True and Full Value of \$1000, Assessable at 20 per Cent, Class 3B; Remainder at 33 1/3 Per Cent, Class 3.

Cass County, Minnesota, for Taxes for the Year 1943.

Table with columns: IN WHOSE NAME ASSESSED, TO WHOM TRANSFERRED, DESCRIPTION OF PROPERTY, ASSESSOR'S VALUATION, EQUALIZED VALUES, VALUATIONS BY SCHOOL DISTRICTS AS EQUALIZED BY DEPARTMENT OF TAXATION, Rate and Tax Less Homestead Exemption, State Tax on Non-Homestead, TOTAL GENERAL TAX, SPECIAL TAXES, TOTAL TAXES, PAID, WHEN PAID, Number of Receipt, March Settlement 1944, June Settlement 1944, Penalty, November Settlement 1944, Penalty, Collections to First Monday in January 1945, Penalty, Delinquent on First Monday in January 1945, Total Delinquent Tax and Penalty, REMARKS. Includes handwritten entries for Claurice Volls, Katie Lee, State of Minnesota, Katie Lee, Martin J. Phillips, Katie Lee, J. H. Bell, Maggie Capen, and State of Minnesota.

434 37

N 40
W 867
907
#26- 11192 364
11556

5730

State of Minnesota
White's Sub-Div.
Lake Shores
Birch Grove on Gulch

Assessment Roll and Tax List of Unplatted Real Property in the of Cass County, Minnesota, for Taxes for the Year 1943.

Form 4 CD MILLER-SAYRE COMPANY, MINNEAPOLIS

Table with columns: IN WHOSE NAME ASSESSED, TO WHOM TRANSFERRED, DESCRIPTION OF PROPERTY, ASSESSOR'S VALUATION, EQUALIZED VALUES, SOLD FOR TAXES. Includes handwritten entries for John S. Lewis, Gull Lake Shore, Inc., Arthur L. Roberts, Dolph C. + Marie Simone, Don A. + Grace S. Freeman, Pine Beach Golf Course, Chas. Fuller, Floyd B. Olson, Steve + Almeria E. Collins, Gull Lake Shore, Inc.

Cass County, Minnesota, for Taxes for the Year 1943.

Table with columns: VALUATIONS BY SCHOOL DISTRICTS AS EQUALIZED BY DEPARTMENT OF TAXATION, Rate and Tax Less Homestead Exemption, State Tax on Non-Homestead, TOTAL GENERAL TAX, SPECIAL TAXES, PAID, WHEN PAID, Number of Receipt, March Settlement 1944, June Settlement 1944, November Settlement 1944, Collections to First Monday in January 1945, Delinquent on First Monday in January 1945, Total Delinquent Tax and Penalty, REMARKS. Includes handwritten entries for various lots and tax amounts.

Vertical text on the right edge of the page: Gull Lake Shore, Pine Bay, White's Sub-Div. Birch Grove on 5th St.

Assessment Roll and Tax List of Unplatted Real Property in the _____ of _____, Unplatted Real Estate Assessed at 33 1/2 Per Cent of True and Full Value; Attached Machinery at 33 1/2 Per Cent of True and Full Value, Homesteads, up to True and Full Value of \$4000, Assessable at 20 per Cent, Class 3B; Remainder at 33 1/2 Per Cent, Class 3.

Cass County, Minnesota, for Taxes for the Year 1943.

Table with columns: IN WHOSE NAME ASSESSED, TO WHOM TRANSFERRED, DESCRIPTION OF PROPERTY, ASSESSOR'S VALUATION, EQUALIZED VALUES, VALUATIONS BY SCHOOL DISTRICTS AS EQUALIZED BY DEPARTMENT OF TAXATION, Rate and Tax Less Homestead Exemption, State Tax on Non-Homestead, TOTAL GENERAL TAX, SPECIAL TAXES, TOTAL TAXES, PAID, WHEN PAID, Number of Receipt, March Settlement 1944, June Settlement 1944, November Settlement 1944, Penalty, Collections to First Monday in January 1945, Delinquent on First Monday in January 1945, Total Delinquent Tax and Penalty, REMARKS.

State of Minnesota (Cont'd to U.S. & Zilda M. Finen)

Gull Lake Thross, Inc.

O. H. Rudi George Collins

E. F. Andberg

E. F. Andberg

Charles G. & Caroline Peterson

Ole Tharlof

State of Minnesota

Charles G. & Caroline Peterson

Ole Tharlof

REMARKS: 10574, 1058, Refund W# 75341 7-28-44 \$4.40, 4.40 Abated, 10778, 10778, 6003, 1065, 1065, 16.88, 16.88, 2552

Assessment Roll and Tax List of Unplatted Real Property in the of Cass County, Minnesota, for Taxes for the Year 1943.

Cass County, Minnesota, for Taxes for the Year 1943.

Table with columns: IN WHOSE NAME ASSESSED, TO WHOM TRANSFERRED, DESCRIPTION OF PROPERTY, ASSESSOR'S VALUATION, EQUALIZED VALUES, VALUATIONS BY SCHOOL DISTRICTS AS EQUALIZED BY DEPARTMENT OF TAXATION, Rate and Tax Less Homestead Exemption, State Tax on Non-Homestead, TOTAL GENERAL TAX, SPECIAL TAXES, TOTAL TAXES, PAID, WHEN PAID, Number of Receipt, March Settlement 1944, June Settlement 1944, November Settlement 1944, Penalty, Collections to First Monday in January 1945, Delinquent on First Monday in January 1945, Total Delinquent Tax and Penalty, REMARKS.

State of Minnesota

State of Minnesota

Minn. Power + Light Co.

" "

Matt Lynch

" "

U. J. Ylisen + Zella M. Ylisen

W. J. Thomas

State of Minnesota (Cont. to Urhoj + Zella M. Ylisen)

State of Minnesota (Chas. E. Roberts)

State of Minnesota (Eloia Pettis)

Mark M. Lynch

Minn. Power + Light Co.

" "

" "

" "

" "

" "

" "

This is all the A's of NW lying S of Pine Beach Road.

Page total

479 75
Stalder + Serravallo 4378 07

#26 136 72
#24 1570.06
#26 3082.88
#24 4653.94
111.16

2552

3836

Assessment Roll and Tax List of Platted Real Property in the Town of East Bull Lake, Minnesota, for Taxes for the Year 1943.

Cass County, Minnesota, for Taxes for the Year 1943.

Table with columns: IN WHOSE NAME ASSESSED, TO WHOM TRANSFERRED, DESCRIPTION OF PROPERTY, ASSESSOR'S VALUATION, EQUALIZED VALUES, VALUATIONS BY SCHOOL DISTRICTS AS EQUALIZED BY DEPARTMENT OF TAXATION, Rate and Tax Less Homestead Exemption, State Tax on Non-Homestead, TOTAL GENERAL TAX, SPECIAL TAXES, TOTAL TAXES, PAID, WHEN PAID, Number of Receipt, March Settlement 1944, June Settlement 1944, Penalty, November Settlement 1944, Penalty, Collections to First Monday in January 1945, Penalty, Delinquent on First Monday in January 1945, Total Delinquent Tax and Penalty, REMARKS.

Handwritten entries in the 'IN WHOSE NAME ASSESSED' and 'TO WHOM TRANSFERRED' columns, including names like 'Mrs. Jean M. Kampmann', 'Claude O. Sarah E. Drury', 'Alice Johnson', 'R.B. Hamilton', 'Erick Olson', 'George E. Anderson', 'Rescue G. Goddard', 'Dr. E. C. Herzog', 'Anabel L. Paine', 'Herman + Leta Myrtle Paul', 'Carl E. + Maria S. Swanson', 'Henry W. + Amanda C. Pieper'.

Abate #1734

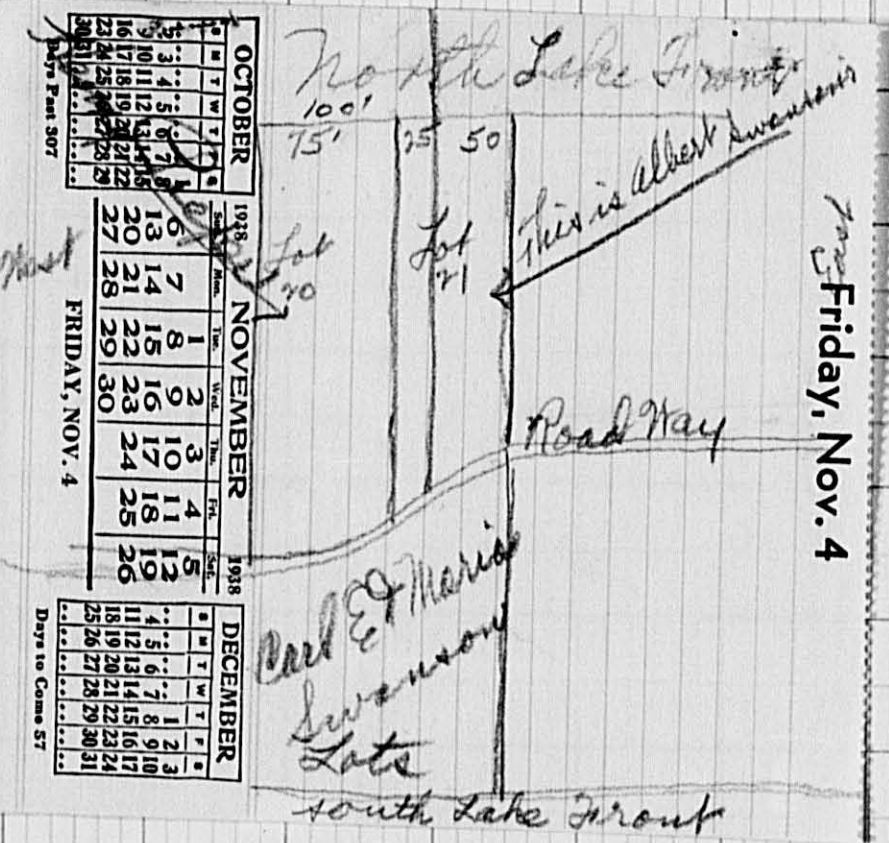
Abate #1904

Abate #1641

That part of Lot 20 x of W. 75 ft. of 21 lying No. of road according to...

Assessment Roll and Tax List of Platted Real Property in the of Cass County, Minnesota, for Taxes for the Year 1943.

Main table with columns: IN WHOSE NAME ASSESSED, TO WHOM TRANSFERRED, DESCRIPTION OF PROPERTY, ASSESSOR'S VALUATION, EQUALIZED VALUES, VALUATIONS BY SCHOOL DISTRICTS AS EQUALIZED BY DEPARTMENT OF TAXATION, Rate and Tax Less Homestead Exemption, State Tax on Non-Homestead, TOTAL GENERAL TAX, SPECIAL TAXES, TOTAL TAXES, PAID, WHEN PAID, Number of Receipt, March Settlement 1944, June Settlement 1944, November Settlement 1944, Collections to First Monday in January 1945, Delinquent on First Monday in January 1945, Total Delinquent Tax and Penalty, REMARKS.



Abat. #164

Abat. #195

Abat. #195

7 Paid NOV 13 1944 #1545

7 Paid MAR 31 1944 #9734

Abatement #2298

Refund W# 75120 6-28-44 #23.16

23.16 over 23.16

Assessment Roll and Tax List of Platted Real Property in the _____ of _____, Platted Real Estate Assessed at 40 Per Cent of True and Full Value; Attached Machinery at 33 1/3 Per Cent of True and Full Value, Homesteads, up to True and Full Value of \$4000, Assessable at 25 per Cent, Class 3C; Remainder at 40 Per Cent, Class 4.

Form 5 C WALKER-BAYNE COMPANY, MINNEAPOLIS

Cass County, Minnesota, for Taxes for the Year 1943.

IN WHOSE NAME ASSESSED	TO WHOM TRANSFERRED	DESCRIPTION OF PROPERTY			No. School District	ASSESSOR'S VALUATION							SOLD FOR TAXES	VALUATIONS BY SCHOOL DISTRICTS AS EQUALIZED BY DEPARTMENT OF TAXATION				Rate and Tax Less Homestead Exemption	State Tax on Non-Homestead	TOTAL GENERAL TAX	SPECIAL TAXES					PAID	WHEN PAID	Number of Receipt	March Settlement 1944	June Settlement 1944	Penalty	November Settlement 1944	Penalty	Collections to First Monday in January 1945	Penalty	Delinquent on First Monday in January 1945	Total Delinquent Tax and Penalty	REMARKS																						
		Subdivision	Lot	Block		True and Full Value of Land Exclusive of Structures and Improvements	STRUCTURES & IMPROVEMENTS	True and Full Value of Buildings and Other Structures	True and Full Value of Machinery Permanently Attached to Real Estate	Total True and Full Value of Land Including all Structures, Improvements and Machinery	Assessed Value of Homesteads up to \$4,000 at 2 1/2 per cent Class 3C	Assessed Value of Remainder at 40 per cent Class 4		Total Assessed Value of Land Including all Structures, Improvements and Machinery	Total Assessed Value as Equalized by the Board of Review	Total Assessed Value as Equalized by the County Board	Total Assessed Value as Equalized by the Department of Taxation				District No. 24	District No. 26	District No.	District No.	Rate														Rate	Rate	Rate	Dollars	cts.	Dollars	cts.	Dollars	cts.	Dollars	cts.	Dollars	cts.	Dollars	cts.	Dollars	cts.	Dollars	cts.	Dollars	cts.	Dollars
Frank B. + Laura D. Johnson Jean J. Gates		Squaw Point			26									1	180		2222	76	2298	1	PAID IN FULL	JUN 6	1944	5486		2298																																		
		2. 125' Commencing at S.E. Cor. of Lot A, thence running N. to N.E. Corner of said Lot, thence W. along lake 175', thence S. to a point 110' W. of S.E. Cor. of Lot A, thence E. to S.E. Corner of Lot A.												3	410		5060	172	5232	3	PAID IN FULL	MAR 8	1944	2752		5232																																		
N.E. + Myrtle Entickin		1/4 75' of Lot 9												5	290		3578	122	3700	5	PAID IN FULL	JUN 5	1944	5453		3700																																		
														20			10860	370	11230																																									

Oakhurst
Fire Bay
Fire Beach
H.W. White's Sub-Div. Birch Grove on Gill
Gill Lake Shores

Assessment Roll and Tax List of Platted Real Property in the of Cass County, Minnesota, for Taxes for the Year 1943.

Main assessment roll table with columns: IN WHOSE NAME ASSESSED, TO WHOM TRANSFERRED, DESCRIPTION OF PROPERTY, ASSESSOR'S VALUATION, EQUALIZED VALUES, VALUATIONS BY SCHOOL DISTRICTS AS EQUALIZED BY DEPARTMENT OF TAXATION, Rate and Tax Less Homestead Exemption, State Tax on Non-Homestead, TOTAL GENERAL TAX, SPECIAL TAXES, TOTAL TAXES, PAID, WHEN PAID, Number of Receipt, March Settlement 1941, June Settlement 1941, November Settlement 1941, Collections to First Monday in January 1945, Delinquent on First Monday in January 1945, Total Delinquent Tax and Penalty, REMARKS.

Fannie S. Chaffee
Beth J. Holmes + Mary E. Zylleman
Carl F. Jamison, Sr.
Mary E. Zylleman + J. G. Conklin
Clyde E. Porter Fred J. + Adie M. Conklin
Fred O. Wells

Pike Bay
Part of Lot 2, Sec. 20-134-29)

Outlet

36

14030

Table with columns: IN WHOSE NAME ASSESSED, TO WHOM TRANSFERRED, DESCRIPTION OF PROPERTY, ASSESSOR'S VALUATION, EQUALIZED VALUES, VALUATIONS BY SCHOOL DISTRICTS AS EQUALIZED BY DEPARTMENT OF TAXATION, Rate and Tax Less Homestead Exemption, State Tax on Non-Homestead, TOTAL GENERAL TAX, SPECIAL TAXES, TOTAL TAXES, PAID, WHEN PAID, Number of Receipt, March Settlement 1944, June Settlement 1944, Penalty, November Settlement 1944, Penalty, Collections to First Monday in January 1945, Penalty, Delinquent on First Monday in January 1945, Total Delinquent Tax and Penalty, REMARKS.

J.R. White 1st Sub-Division of Bull Lake Shore (2x5-Str. 16-134-19)

Chas. D. McKay, A.W. Bach + Eva L. Bach, Mary L. + Evelyn E. Storm, John A. + Jennie H. McKay, Arthur C. Larson, Andrew G. Anderson, John + Hilda M. Stenberg, Leo A. + Lulu K. Rippenrath, Roy H. Jones, M. H. Nelson, Anthony J. Gustafson, Anna L. Lord, Alice + H.S. McClenahan W.R. Hiller, Nellie M. Klene, Nyma B. McCoy, B.G. Williams, Thos. G. Johnson, Ralph Stecker, Mabel B. Whitney, Helen W. Butler

SOLD FOR TAXES

84 N. 1968 71.4.3006 4974

62648

2641

2641

Oakhurst

Pine Beach

Birch Grove on Hill

Assessment Roll and Tax List of Platted Real Property in the of Cass County, Minnesota, for Taxes for the Year 1943.

Cass County, Minnesota, for Taxes for the Year 1943.

Table with columns: IN WHOSE NAME ASSESSED, TO WHOM TRANSFERRED, DESCRIPTION OF PROPERTY, ASSESSOR'S VALUATION, EQUALIZED VALUES, VALUATIONS BY SCHOOL DISTRICTS AS EQUALIZED BY DEPARTMENT OF TAXATION, Rate and Tax Less Homestead Exemption, State Tax on Non-Homestead, TOTAL GENERAL TAX, SPECIAL TAXES, TOTAL TAXES, PAID, WHEN PAID, Number of Receipt, March Settlement 1944, June Settlement 1944, Penalty, November Settlement 1944, Penalty, Collections to First Monday in January 1945, Penalty, Delinquent on First Monday in January 1945, Total Delinquent Tax and Penalty, REMARKS.

George D. La Bar
Gertrude Opsahl
M. J. & Mrs. Gerald Martin & Bernice Margaret Halvorson
Margaret Halvorson
Marie C. Erickson
Herman J. & Sadie V. Coenen
Rebecca Falk Cohen
Chas. C. & Margaret H. Sanderson
Augusta Halquist
Chas. C. & Margaret H. Sanderson
Chester & Stewart Benson
Martha Larson
Annie, Claude, & Clarence Holden's int.
H. J. Thompson & G. L. Murray & Kathleen Peacock
Norma Geraldine Olsen
Paul & Genevieve Dybick
Alma Sampson
Leonard Riiness
A. M. Opsahl

Subdivision Birch Grove on Bull (L&L Sec. 9-134-19)

7 1/2 of 9
5 1/2 of 9

75' of 15
50' of 15
73.4' of 15

SOLD FOR TAXES

SOLD FOR TAXES

SOLD FOR TAXES

SOLD FOR TAXES

Abatement #2483

Refund W. #76691 17.86 12-45 17.86 Abated

4030-4661 57516 1690

510 x 561
510 x 561 17.86
510 x 561 17.86 abated
510 x 561
6634

Assessment Roll and Tax List of Platted Real Property in the _____ of _____
 Platted Real Estate Assessed at 40 Per Cent of True and Full Value; Attached Machinery at 33 1/2 Per Cent of True and Full Value, Homesteads, up to True and Full Value of \$4000, Assessable at 25 per Cent, Class 3C; Remainder at 40 Per Cent, Class 4.

Form 5 C. HALL-BAYB COMPANY, MINNEAPOLIS

IN WHOSE NAME ASSESSED	TO WHOM TRANSFERRED	DESCRIPTION OF PROPERTY		No. School District	Indicate Homestead	ASSESSOR'S VALUATION						EQUALIZED VALUES			SOLD FOR TAXES		
						True and Full Value of Lands Exclusive of Structures and Improvements	STRUCTURES & IMPROVEMENTS		Total True and Full Value of Lands including all Structures, Improvements and Machinery	Assessed Value of Homesteads up to \$4,000 at 25 per cent Class 3C	Assessed Value of Remainder at 40 per cent Class 4	Total Assessed Value of Lands including all Structures, Improvements and Machinery	Total Assessed Value as Equalized by the Board of Review	Total Assessed Value as Equalized by the County Board		Total Assessed Value as Equalized by the Department of Taxation	
							True and Full Value of Buildings and Other Structures	True and Full Value of Machinery Permanently Attached to Real Estate									Dollars
Ralph C. Falconer Dr. M. P. Gerber	Hyd. Coal. Oil	Oakhurst (8.10 acs of Lot 7 Sec. 9-134-79) Lot 1 less wedge shaped piece in NE Corner.		26													
Andrew Anderson																	
Mayme La Bar E. S. Houghton	State of Minnesota	Wedge shaped piece															

Cass County, Minnesota, for Taxes for the Year 1943.

VALUATIONS BY SCHOOL DISTRICTS AS EQUALIZED BY DEPARTMENT OF TAXATION				Rate and Tax Less Homestead Exemption	State Tax on Non-Homestead	TOTAL GENERAL TAX	SPECIAL TAXES				TOTAL TAXES	PAID	WHEN PAID	Number of Receipt	March Settlement 1944	June Settlement 1944	Penalty	November Settlement 1944	Penalty	Collections to First Monday in January 1945	Penalty	Delinquent on First Monday in January 1945	Total Delinquent Tax and Penalty	REMARKS					
District No.	District No.	District No.	District No.				Rate	Rate	Rate	Rate																			
1	26	360	442	4442	152	4594	1	2nd Half Paid				DEC 7 1944	1876																
2	26	40	494	494	16	510	2	PAID IN FULL				MAY 5 1944		2297															
3	26	46	5430	5430	184	5614	3	PAID IN FULL				MAY 5 1944	4212																
4	26	40	494	494	16	510	4	PAID IN FULL				MAY 5 1944		714															
5	26	40	494	494	16	510	5	PAID IN FULL				MAY 5 1944																	
6	26	\$ 208	2566	2566		2566	6	PAID IN FULL				JUN 2 1944	5171		2566														
7	26	20	246	246	8	254	7	PAID IN FULL				6 2 1944	5177		254														
8	26	80	988	988	34	1022	8	Care. def. to State																					

* 208
 * 20 15154 426
 1228
 15580

10.22 Care

10.22 Care

Assessment Roll and Tax List of Platted Real Property in the of Cass County, Minnesota, for Taxes for the Year 1943.

Cass County, Minnesota, for Taxes for the Year 1943.

Table with columns: IN WHOSE NAME ASSESSED, TO WHOM TRANSFERRED, DESCRIPTION OF PROPERTY, ASSESSOR'S VALUATION, EQUALIZED VALUES, VALUATIONS BY SCHOOL DISTRICTS AS EQUALIZED BY DEPARTMENT OF TAXATION, SPECIAL TAXES, PAID, WHEN PAID, Number of Receipt, March Settlement 1944, June Settlement 1944, November Settlement 1944, Penalty, Collections to First Monday in January 1945, Delinquent on First Monday in January 1945, Total Delinquent Tax and Penalty, REMARKS.

See Copy of Plat - File # 1350 J Pine Beach Trading Co. Pine Beach Corporation

W. G. Madden, Jr. & Margaret G. Madden

Pine Beach Corporation

Geo. F. + Edith J. Odeermann Pine Beach Corporation C. J. + Blanche H. Start J. H. + Geraldine Harrison

Abate # 2468

Abate # 7832

700 95 #24 436 24 1448

9480

2702

8932

15064

Assessment Roll and Tax List of Platted Real Property in the of

Cass County, Minnesota, for Taxes for the Year 1943.

Table with columns: IN WHOSE NAME ASSESSED, TO WHOM TRANSFERRED, DESCRIPTION OF PROPERTY, ASSESSOR'S VALUATION, EQUALIZED VALUES, VALUATIONS BY SCHOOL DISTRICTS AS EQUALIZED BY DEPARTMENT OF TAXATION, Rate and Tax Less Homestead Exemption, State Tax on Non-Homestead, TOTAL GENERAL TAX, SPECIAL TAXES, TOTAL TAXES, PAID, WHEN PAID, Number of Receipt, March Settlement 1944, June Settlement 1944, Penalty, November Settlement 1944, Penalty, Collections to First Monday in January 1945, Penalty, Delinquent on First Monday in January 1945, Total Delinquent Tax and Penalty, REMARKS.

Assessment Roll and Tax List of Platted Real Property in the of Cass County, Minnesota, for Taxes for the Year 1943.

Form 5 C HALL-DAVIS COMPANY, MINNEAPOLIS

Table with columns: IN WHOSE NAME ASSESSED, TO WHOM TRANSFERRED, DESCRIPTION OF PROPERTY, ASSESSOR'S VALUATION, EQUALIZED VALUES, VALUATIONS BY SCHOOL DISTRICTS AS EQUALIZED BY DEPARTMENT OF TAXATION, SPECIAL TAXES, PAID, WHEN PAID, Number of Receipt, March Settlement 1944, June Settlement 1944, Penalty, November Settlement 1944, Penalty, Collections to First Monday in January 1945, Penalty, Delinquent on First Monday in January 1945, Total Delinquent Tax and Penalty, REMARKS.

H. B. Washburn
Selma Schwartz
Pine Beach Corporation
"
"
"
"

Pine Beach
1 Tract B-10 (Part of Lot 14)
2 " B-11 (" " 14)
3 " B-12 (" " 14)
4 " B-13 (" " 14)
5 " B-14 (" " 14)
6 " B-15 (" " 14)
7 " B-16 (" " 14)
8 " B-17 (" " 13+14)

24

SOLD FOR TAXES
SOLD FOR TAXES
SOLD FOR TAXES
SOLD FOR TAXES
SOLD FOR TAXES

#24 1650 550
#24 1300 1338

17060

2nd Half Paid NOV 21 1944
1st Half Paid JUN 9 1944
PAID IN FULL JUN 2 1944
PAID IN FULL JUN 2 1944

11487
7082
5158
13018

7 66x 843
7 66x 843
7 66x 843
7 66x 843
5 10x 561

3574

Assessment Roll and Tax List of Platted Real Property in the of Cass County, Minnesota, for Taxes for the Year 1943.

Cass County, Minnesota, for Taxes for the Year 1943.

Table with columns: IN WHOSE NAME ASSESSED, TO WHOM TRANSFERRED, DESCRIPTION OF PROPERTY, ASSESSOR'S VALUATION, EQUALIZED VALUES, VALUATIONS BY SCHOOL DISTRICTS AS EQUALIZED BY DEPARTMENT OF TAXATION, Rate and Tax Less Homestead Exemption, State Tax on Non-Homestead, TOTAL GENERAL TAX, SPECIAL TAXES, TOTAL TAXES, PAID, WHEN PAID, Number of Receipt, March Settlement 1944, June Settlement 1944, November Settlement 1944, Collections to First Monday in January 1945, Delinquent on First Monday in January 1945, Total Delinquent Tax and Penalty, REMARKS.

