



CASS LAKE VILL.  
1916



Auditor's Office, Cass County, Minnesota.

I, C. D. BACON, Auditor of Cass County, and State of Minnesota, do hereby certify that the following is a correct list of the Taxes levied on the Real and Personal Property in the ville Cass Lake (L. S.) for the year 1916.

WITNESS my hand and official seal this JAN 2 - 1917 day of 191 C. D. Bacon County Auditor.

Treasurer's Office, Cass County, State of Minnesota.

RECEIVED this, the first Monday (being the second day) of January, A. D. 1917, of C. D. BACON, Auditor of Cass County, Minnesota, the Tax List of all taxable Real and Personal Property in the ville of Cass Lake in said County of Cass for the year A. D. 1916, as specified above and amounting to thirty thousand, one hundred thirty four & 26/100 Dollars.

W. J. McKean  
Treasurer of Cass County.



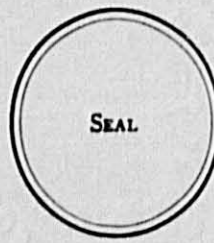
Tabular Schedule of Valuations, Rates and Taxes,

Levied in the Village of Cass Lake County of CASS State of Minnesota.

Table with columns for VALUATION BY SCHOOL DISTRICTS, STATE TAXES, RATE OF COUNTY TAXES, RATE OF TOWN, CITY OR VILLAGE TAXES, RATE OF SCHOOL TAXES, and TAXES LEVIED. Includes handwritten values for various categories like State Revenue, State School, etc.

TOTALS 21006 141627 155811 318444 106326 ... Total Number of Acres 66 3/100 Total Levy 30134 2/100

State of Minnesota, County of Cass, I, C. W. Bacon Auditor of said County and State aforesaid, do hereby certify that the foregoing is a true and correct Schedule, showing the valuation of all the taxable property in the Village of Cass Lake in said County, the several rates of taxation and totals of the several Tax Funds levied thereon for the year A. D. 1916. Witness my hand and official seal this day of JAN 2 - 1917 A. D. 1917 County Auditor.



Collection of Taxes of 1916, Village of Cass Lake, CASS County, Minnesota.

Table with columns for FUNDS, MARCH SETTLEMENT 1917, JUNE SETTLEMENT 1917, NOVEMBER SETTLEMENT 1917, MARCH SETTLEMENT 1918, JUNE SETTLEMENT 1918, TOTAL, and Balance Uncollected. Includes handwritten entries for State Revenue, State School, County Revenue, etc.









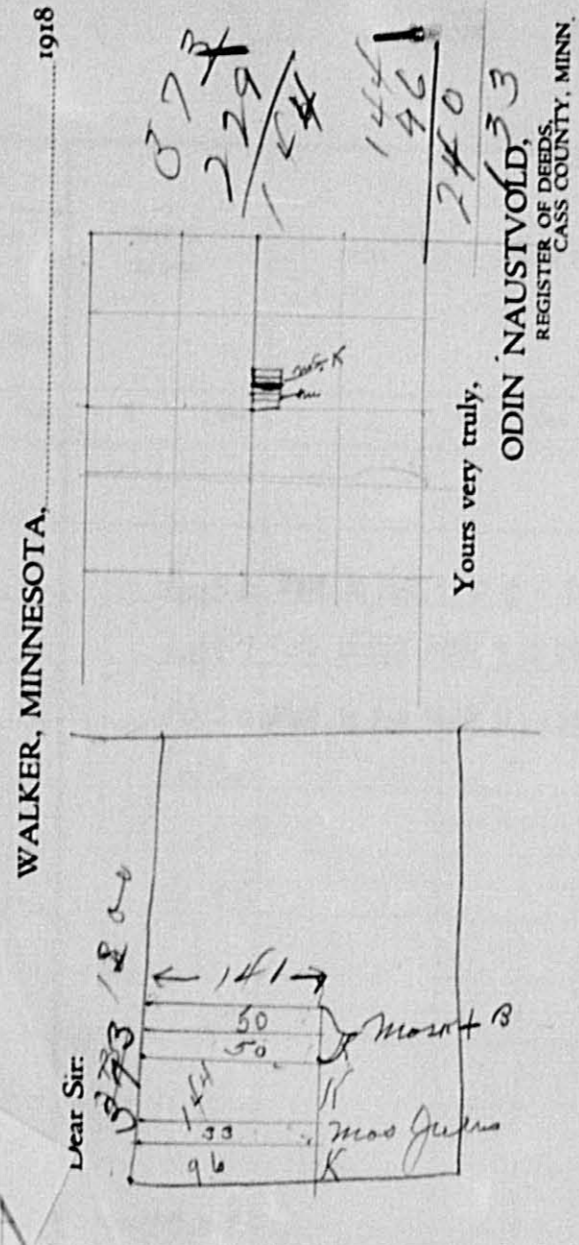






Tax List of Real Property in the Village of Cass Lake

IN WHOSE NAME ASSESSED	TO WHOM TRANSFERRED	Sold for Taxes	SUBDIVISION	Sec. or Lot	Town or Block	No. of Acres	VALUATION	GENERAL TAXES			Ditch No.	SCHOOL DIST.	
								State	County	Town		State	School
							Dollars	\$	Cts.	\$	Cts.	\$	Cts.
Footings Brought Forward													
Joe L. Allen			30 x 141 ft. of Sw 1/4 NE 1/4	15	145	31	110						
Ludwig Kautz	Mack Boringson		111 x 141 ft. of Sw 1/4 NE 1/4	"	"	"	114						
L. Matchkowski			S. 25 ft. of E. 189 ft. of Sw 1/4 NE 1/4	"	"	"	110						
C. A. Graham			20.33' of So. 230' of E. 189' of Sw 1/4 NE 1/4	"	"	"	110						
"			W. 330' of Sw 1/4 NE 1/4	"	"	"							
"			N. 8' of S. 121' of E. 189' of W. 330' of Sw 1/4 NE 1/4	"	"	"	8						
"			Sw 1/4 NE 1/4	"	"	"							
"			N. 5' of S. 30' of E. 189' of W. 330' of Sw 1/4 NE 1/4	"	"	"	5						
W. F. Koeneman			50 x 141 ft. of Sw 1/4 NE 1/4	"	"	"	154						
Julius Maskowski			100 x 141 ft. of Sw 1/4 NE 1/4	"	"	"	154						
The Northern Pine Crating Co.			20 ac. of L. 273 less Rt. Hy.	"	"	20	3333						
Cass Lake Commercial Club			Balance of Lots 273	"	"	3750	68						
						Footings Carried Forward	5750	1166					



ss County, Minnesota, for Taxes of the Year 1916

No. of Receipt	March Settlement	June Settlement	Penalty	November Settlement	Penalty	Collections to First Monday in January	Penalty	Delinquent on First Monday in January	REMARKS
7	8195			1030	103				
7	3065	1067							
7	3521	1030							
1441									2nd Half Paid JUN 25 1917 7776 1st Half Paid MAY 31 1917 5696
31196									721 781
636									Paid in Full MAY 31 1917 6571 31196 Paid in Full MAY 21 1917 7523 636
38993									











Tax List of Real Property in the Village of Cass Lake

Cass County, Minnesota, for Taxes of the Year 1916

IN WHOSE NAME ASSESSED	TO WHOM TRANSFERRED	Sold for Taxes	SUBDIVISION	Sec. or Lot	Town or Block	No. of Acres	VALUATION	GENERAL TAXES			Ditch No.	SCHOOL DISTRICT		TOTAL TAXES	PAID	WHEN PAID	No. of Receipt	March Settlement	June Settlement	Penalty	November Settlement	Penalty	Collections to First Monday in January	Penalty	Delinquent on First Monday in January	REMARKS			
								State Mills	State Sch'l	County		State School	District No.														District Rate	District Mills	
			Townsite				Dollars	\$	Cts.	\$	Cts.	\$	Cts.	\$	Cts.	Month	Day	Year	\$	Cts.	\$	Cts.	\$	Cts.	\$	Cts.	\$	Cts.	
			Footings Brought Forward																										
J. F. B. Neils				1	1		18																						
"				2			18																						
"				3			590																						
"				4			18																						
Wm. Forde				5			18																						
"				12			209																						
Christian Holm				13			18																						
"				14			182																						
"				n/2 of 15			9																						
"				16			182																						
D. L. Stanton				s/2 of 15			9																						
Michael Gannon				17			18																						
"				18			18																						
"				19			176																						
J. F. B. Neils				20			18																						
"				21			18																						
"				22			18																						
			Footings Carried Forward				1537																						

168 Paid in Full MAY 29 1917  
 168 Paid in Full MAY 29 1917 } 5368  
 552.2 Paid in Full MAY 29 1917 }  
 168 Paid in Full MAY 29 1917 }  
 168 Paid in Full MAY 29 1917 }  
 1956 1st Half Paid MAY 22 1917 } 8533  
 168 2nd Half Paid OCT 9 1917 }  
 168 1st Half Paid MAY 22 1917 } 4531  
 1704 2nd Half Paid OCT 23 1917 }  
 84 1st Half Paid OCT 23 1917 } 3921  
 1704 Paid in Full MAY 21 1917 }  
 84 Paid in Full MAY 21 1917 } 5714  
 168 Paid } 6898  
 168 1st Half Paid OCT 26 1917 }  
 168 2nd Half Paid OCT 23 1917 } 9352  
 1647 1st Half Paid OCT 23 1917 } 6574  
 168 2nd Half Paid OCT 23 1917 }  
 168 Exempt  
 168 Exempt

6194 ✓  
 1062 ✓ 1062 ✓  
 894 ✓ 894 ✓  
 1788 ✓  
 992 ✓ 991 ✓

See Abatement # 3436

14381



Tax List of Real Property in the Village of Cass Lake

Cass County, Minnesota, for Taxes of the Year 1916

IN WHOSE NAME ASSESSED	TO WHOM TRANSFERRED	Sold for Taxes	SUBDIVISION	Sec. or Lot	Town or Block	Reg.	No. of Acres	VALUATION	GENERAL TAXES			Ditch No.	SCHOOL DISTRICT		TOTAL TAXES	PAID	WHEN PAID	No. of Receipt	March Settlement	June Settlement	Penalty	November Settlement	Penalty	Collections to First Monday in January	Penalty	Delinquent on First Monday in January	REMARKS									
									State Sch'l	County Sch'l	Town Sch'l		State School	Bonds														District No.	District No.							
									Mills																											
									Dollars	\$	Cts.	\$	Cts.	\$	Cts.	\$	Cts.	\$	Cts.	\$	Cts.	\$	Cts.	\$	Cts.	\$	Cts.	\$	Cts.	\$	Cts.					
			Townsite																																	
			Footings Brought Forward																																	
J. Neils Lbr. Co				1	2			222																												
"				2				18																												
Allie Mingyher	Emanuel Johnson			2 1/2	3			128																												
"	"			5 1/2	3			64																												
Frances A. Green				4				18																												
"				5				128																												
John O. Orngren				6				18																												
"				7				238																												
"				8				18																												
Geo Birtch				9				18																												
"				10				18																												
"				11				236																												
Bertha Hanson				12				18																												
"				13				209																												
Hans King	Henry Doolen	Max Mueller		14				18																												
"	"	"		15				226																												
Alfred O. Johnson				16				18																												
"				17				18																												
"				18				182																												
			Footings Carried Forward																																	
									1759																											

16460















Tax List of Real Property in the Village of Cass Lake

IN WHOSE NAME ASSESSED	TO WHOM TRANSFERRED	Sold for Taxes	SUBDIVISION	Sec. or Lot	Town or Block	No. of Acres	VALUATION	GENERAL TAXES			Ditch No.			
								State Sch'l	County Sch'l	Local Sch'l				
							Dollars	¢	Cts.	¢	Cts.	¢	Cts.	
<i>Townsite</i>														
<i>Footings Brought Forward</i>														
Chas. M. Johnson				1	7		242							
"				2			22							
C. M. Johnson				3			242							
"				4			22							
"				5			242							
"				6			22							
Tri State Land Co.				7			22							
"				8			22							
S. W. Millet				9			22							
"				10			22							
Robert Hennrich				11			22							
Edward Broulette				12			22							
Tri-State Land Co.	Mary Broulette			13			22							
Jerome Compaan				14			22							
"				15			22							
Oluf S. Colman				16			22							
"				17			22							
Maggie Theisen				18			22							
J. D. Caldwell				19			286							
"				20			18							
<i>Footings Carried Forward</i>							1260							

Cass County, Minnesota, for Taxes of the Year 1916

SCHOOL DISTRICT	TOTAL TAXES	PAID	WHEN PAID	No. of Receipt	March Settlement	June Settlement	Penalty	November Settlement	Penalty	Collections to First Monday in January	Penalty	Delinquent on First Monday in January	REMARKS
¢	Cts.	¢	Cts.	¢	Cts.	¢	Cts.	¢	Cts.	¢	Cts.	¢	Cts.
			Month	Day	Year								
2265													
2nd Half Paid OCT 2 1917													
1st Half Paid MAY 28 1917													
2nd Half Paid OCT 2 1917													
1st Half Paid MAY 25 1917													
206													
2nd Half Paid OCT 2 1917													
1st Half Paid MAY 25 1917													
2265													
2nd Half Paid OCT 2 1917													
1st Half Paid MAY 25 1917													
206													
2nd Half Paid OCT 2 1917													
1st Half Paid MAY 25 1917													
2265													
2nd Half Paid OCT 2 1917													
1st Half Paid MAY 25 1917													
206													
2nd Half Paid OCT 2 1917													
1st Half Paid MAY 25 1917													
206													
2nd Half Paid OCT 2 1917													
1st Half Paid MAY 25 1917													
206													
2nd Half Paid OCT 2 1917													
1st Half Paid MAY 25 1917													
206													
2nd Half Paid OCT 2 1917													
1st Half Paid MAY 25 1917													
206													
2nd Half Paid OCT 2 1917													
1st Half Paid MAY 25 1917													
206													
2nd Half Paid OCT 2 1917													
1st Half Paid MAY 25 1917													
206													
2nd Half Paid OCT 2 1917													
1st Half Paid MAY 25 1917													
206													
2nd Half Paid OCT 2 1917													
1st Half Paid MAY 25 1917													
206													
2nd Half Paid OCT 2 1917													
1st Half Paid MAY 25 1917													
206													
2nd Half Paid OCT 2 1917													
1st Half Paid MAY 25 1917													
206													
2nd Half Paid OCT 2 1917													
1st Half Paid MAY 25 1917													
206													
2nd Half Paid OCT 2 1917													
1st Half Paid MAY 25 1917													
206													
2nd Half Paid OCT 2 1917													
1st Half Paid MAY 25 1917													
206													
2nd Half Paid OCT 2 1917													
1st Half Paid MAY 25 1917													
206													
2nd Half Paid OCT 2 1917													
1st Half Paid MAY 25 1917													
206													
2nd Half Paid OCT 2 1917													
1st Half Paid MAY 25 1917													
206													
2nd Half Paid OCT 2 1917													
1st Half Paid MAY 25 1917													
206													
2nd Half Paid OCT 2 1917													
1st Half Paid MAY 25 1917													
206													
2nd Half Paid OCT 2 1917													
1st Half Paid MAY 25 1917													
206													
2nd Half Paid OCT 2 1917													
1st Half Paid MAY 25 1917													
206													
2nd Half Paid OCT 2 1917													
1st Half Paid MAY 25 1917													
206													
2nd Half Paid OCT 2 1917													
1st Half Paid MAY 25 1917													
206													
2nd Half Paid OCT 2 1917													
1st Half Paid MAY 25 1917													
206													
2nd Half Paid OCT 2 1917													
1st Half Paid MAY 25 1917													
206													
2nd Half Paid OCT 2 1917													
1st Half Paid MAY 25 1917													
206													
2nd Half Paid OCT 2 1917													
1st Half Paid MAY 25 1917													
206													
2nd Half Paid OCT 2 1917													
1st Half Paid MAY 25 1917													
206													
2nd Half Paid OCT 2 1917													
1st Half Paid MAY 25 1917													
206													
2nd Half Paid OCT 2 1917													
1st Half Paid MAY 25 1917													
206													
2nd Half Paid OCT 2 1917													
1st Half Paid MAY 25 1917													
206													
2nd Half Paid OCT 2 1917													
1st Half Paid MAY 25 1917													
206													
2nd Half Paid OCT 2 1917													
1st Half Paid MAY 25 1917													
206													
2nd Half Paid OCT 2 1917													
1st Half Paid MAY 25 1917													
206													
2nd Half Paid OCT 2 1917													
1st Half Paid MAY 25 1917													
206													
2nd Half Paid OCT 2 1917													
1st Half Paid MAY 25 1917													
206													
2nd Half Paid OCT 2 1917													
1st Half Paid MAY 25 1917													
206													
2nd Half Paid OCT 2 1917													
1st Half Paid MAY 25 1917													
206													
2nd Half Paid OCT 2 1917													
1st Half Paid MAY 25 1917													
206													
2nd Half Paid OCT 2 1917													
1st Half Paid MAY 25 1917													
206													
2nd Half Paid OCT 2 1917													
1st Half Paid MAY 25 1917													
206													
2nd Half Paid OCT 2 1917													
1st Half Paid MAY 25 1917													
206													
2nd Half Paid OCT 2 1917													
1st Half Paid MAY 25 1917													
206													
2nd Half Paid OCT 2 1917													
1st Half Paid MAY 25 1917													
206													
2nd Half Paid OCT 2 1917													
1st Half Paid MAY 25 1917													
206													
2nd Half Paid OCT 2 1917													
1st Half Paid MAY 25 1917													
206													
2nd Half Paid OCT 2 1917													
1st Half Paid MAY 25 1917													
206													
2nd Half Paid OCT 2 1917													
1st Half Paid MAY 25 1917													
206													
2nd Half Paid OCT 2 1917													
1st Half Paid MAY 25 1917													
206													
2nd Half Paid OCT 2 1917													
1st Half Paid MAY 25 1917													
206													
2nd Half Paid OCT 2 1917													
1st Half Paid MAY 25 1917													
206													
2nd Half Paid OCT 2 1917													
1st Half Paid MAY 25 1917													
206													
2nd Half Paid OCT 2 1917													
1st Half Paid MAY 25 1917													
206													
2nd Half Paid OCT 2 1917													
1st Half Paid MAY 25 1917													
206													
2nd Half Paid OCT 2 1917													
1st Half Paid MAY 25 1917													
206													
2nd Half Paid OCT 2 1917													
1st Half Paid MAY 25 1917													
206													
2nd Half Paid OCT 2 1917													
1st Half Paid MAY 25 1917													
206													
2nd Half Paid OCT 2 1917													
1st Half Paid MAY 25 1917													
206													
2nd Half Paid OCT 2 1917													
1st Half Paid MAY 25 1917													
206													
2nd Half Paid OCT 2 1917													
1st Half Paid MAY 25 1917													
206													
2nd Half Paid OCT 2 1917													
1st Half Paid MAY 25 1917													
206													
2nd Half Paid OCT 2 1917													
1st Half Paid MAY 25 1917													
206													
2nd Half Paid OCT 2 1917													
1st Half Paid MAY 25 1917													
206													



Tax List of Real Property in the Village of Cass Lake

Cass County, Minnesota, for Taxes of the Year 1916

IN WHOSE NAME ASSESSED	TO WHOM TRANSFERRED	Sold for Taxes	SUBDIVISION	Sec. or Lot	Town or Block	Reg.	No. of Acres		VALUATION	GENERAL TAXES			Ditch No.		SCHOOL DISTRICT		TOTAL TAXES	PAID	WHEN PAID	No. of Receipt	March Settlement	June Settlement	Penalty	November Settlement	Penalty	Collections to First Monday in January	Penalty	Delinquent on First Monday in January	REMARKS						
							Aeres	100ths		State Mills	County Mills	Local Sch'l Mills	Total Mills	State School	Bonds	District No.														District Rate	District No.	District Rate	Month	Day	Year
			Townsite						Dollars	\$	Cts.	\$	Cts.	\$	Cts.	\$	Cts.																		
			Footings Brought Forward																																
Ethel Jane Lindmark	Edwinn M. Sandberg			21	7				18																										
Dana V. Gardner	"			22					21.2																										
"	"			23					35.2																										
J. P. Utley	"			24					18																										
"	"			1	8				18																										
"	"			2					35.2																										
M. E. Surface	"			3					18																										
"	"			4					18																										
"	"			5					13.2																										
Michael Gannon	"			6					18																										
Tri-State Land Co.	"			7					18																										
"	"			8					18																										
"	"			9					18																										
"	"			10					18																										
Samuel Johnson	"			11					18																										
"	"			12					35.2																										
Tri-State Land Co.	Baptiste Drumbeater & Joe Simon Drumbeater			13					18																										
Tri-State Land Co.	"			14					73																										
"	"			15					18																										
			Footings Carried Forward						1737																										

District No.	District Rate	TOTAL TAXES	PAID	WHEN PAID	No. of Receipt	March Settlement	June Settlement	Penalty	November Settlement	Penalty	Collections to First Monday in January	Penalty	Delinquent on First Monday in January
\$	Cts.	\$	Cts.	Month Day Year		\$	Cts.	\$	Cts.	\$	Cts.	\$	Cts.
168				2nd Half Paid OCT 30 1917									
168				1st Half Paid MAY 31 1917	9672								
2265				2nd Half Paid OCT 30 1917									
2265				1st Half Paid MAY 31 1917	5978	1217.			1216	✓			
3295				2nd Half Paid OCT 30 1917									
3295				1st Half Paid MAY 31 1917	9117								
168				2nd Half Paid OCT 30 1917	4919								
168				1st Half Paid MAY 31 1917		1932.			1731	✓			
168				2nd Half Paid OCT 30 1917									
168				1st Half Paid MAY 31 1917	8533								
3295				2nd Half Paid OCT 30 1917	5690	1816.			1816	✓			
168				1st Half Paid MAY 31 1917									
168				2nd Half Paid OCT 30 1917									
168				1st Half Paid MAY 31 1917	11024								
1236				2nd Half Paid OCT 30 1917	5694	786.					786	79	
168				1st Half Paid MAY 31 1917									
168				2nd Half Paid OCT 30 1917									
168				1st Half Paid MAY 31 1917	9352								
168				2nd Half Paid OCT 30 1917	6574	84.			84	✓			
168				1st Half Paid MAY 31 1917									
168				2nd Half Paid OCT 30 1917									
168				1st Half Paid MAY 31 1917	9115								
168				2nd Half Paid OCT 30 1917	4909	336.			336	✓			
168				1st Half Paid MAY 31 1917									
168				2nd Half Paid OCT 30 1917									
168				1st Half Paid MAY 31 1917	9499								
168				2nd Half Paid OCT 30 1917	6590	1732.			1731	✓			
683				Paid in Full FEB 15 1917	807	683.							
168				2nd Half Paid OCT 30 1917	9115								
168				1st Half Paid MAY 31 1917	4909	84.			84				

162.53



























IN WHOSE NAME ASSESSED	TO WHOM TRANSFERRED	Sold for Taxes	SUBDIVISION	Sec. or Lot	Town or Block	No. of Acres	VALUATION	GENERAL TAXES			Ditch No.	SCHOOL DISTRICT			TOTAL TAXES	PAID	WHEN PAID	No. of Receipt	March Settlement	June Settlement	Penalty	November Settlement	Penalty	Collections to First Monday in January	Penalty	Delinquent on First Monday in January	REMARKS										
								State Mills	County Mills	Local Sch'l Mills		State School Bonds	District No.	District Rate														District Mills									
			Original Plat				Dollars	\$	Cts.	\$	Cts.	\$	Cts.	\$	Cts.	\$	Cts.	Month	Day	Year	\$	Cts.	\$	Cts.	\$	Cts.	\$	Cts.	\$	Cts.	\$	Cts.					
			Footings Brought Forward																																		
Emma Mullen				1	1		44																														
"				2			550																														
"				3			44																														
Dorothea Koll	Wilfrid R. Vincent			4			44																														
"	"			5			550																														
Tri State Land Co			Lot 7 & 1/2 of lot	8			44																														
Ora Shur			" 7 & 1/2 of "	8			66																														
Chas. Tedford			1/2 of lot 11 and lot	10			198																														
Tri State Land Co			1/2 "	11			792																														
"				12			33																														
E. L. Warren				13			66																														
"			1/2 of lot	14			550																														
Emma E. Harding			1/2 Lot 14 and lot	15			33																														
"			S. 10 ft. of lot	16			660																														
Henrietta R. Smith			2.15 1/2 "	16			26																														
"				17			40																														
"				18			66																														
"							715																														
			Footings Carried Forward				4521																														

412, paid in full MAY 10 1917

5148, paid in full MAY 10 1917

412, paid in full MAY 10 1917

412, paid in full MAY 10 1917

5148 Paid in full MAY 8 1917

412, paid in full MAY 8 1917

618 1st Half Paid MAY 22 1917

1853 Paid subsequent to Cert. No. 7727

713 1st Half Paid MAY 31 1917

309 1st Half Paid MAY 22 1917

618 2nd Half Paid OCT 23 1917

5148 1st Half Paid MAY 22 1917

309 Paid subsequent to Cert. No. 7727

6178 Paid in full MAY 31 1917

213 Paid in full MAY 31 1917

371 2nd Half Paid OCT 10 1917

618 1st Half Paid MAY 30 1917

6692 2nd Half Paid OCT 10 1917

3566

6384

3469

5560

9104

309

309

4908

7727

7329

3707

3706

372

4908

461

463

7727

4970

5970

6936

7314

6421

8560

3705

3842

3842

7314

42317



Tax List of Real Property in the Village of Cass Lake

Cass County, Minnesota, for Taxes of the Year 1916

IN WHOSE NAME ASSESSED	TO WHOM TRANSFERRED	Sold for Taxes	SUBDIVISION	Sec. or Lot	Town or Block	No. of Acres	VALUATION	GENERAL TAXES			SCHOOL DISTRICT		TOTAL TAXES	PAID	WHEN PAID	No. of Receipt	March Settlement	June Settlement	Penalty	November Settlement	Penalty	Collections to First Monday in January	Penalty	Delinquent on First Monday in January	REMARKS	
								Mills			Ditch No.	District No.														District Rate
								State	State Sch'l	County	State	No.														Rate
			Original Plat				Dollars	\$	Cts.	\$	Cts.	\$	Cts.													
			Footings Brought Forward																							
Cass Land Co.				1	2		88																			
"				2			737																			
"				3			66																			
Tri State Land Co.			n/2 Lot 5 & lot	4			99																			
"			s/2 "	5			33																			
"				6			66																			
Hattie Allen				7			66																			
J. J. Gardner			s/2 Lot 14 & lot	12			66																			
Chas. M. Johnson			n/2 " 14 " "	13			660																			
Geo. Farley			s/2 " 17 " "	15			440																			
Chas. M. Johnson			s/2 " 17 " "	16			440																			
Episcopal Diocese				18			440																			
				8																						
			Footings Carried Forward				3201																			

2nd Half Paid OCT 23 1917  
 824 1st Half Paid MAY 22 1917  
 6898 2nd Half Paid OCT 23 1917  
 618 1st Half Paid MAY 22 1917  
 927 2nd Half Paid OCT 23 1917  
 309 1st Half Paid MAY 22 1917  
 618 2nd Half Paid OCT 23 1917  
 618 1st Half Paid MAY 22 1917  
 618 2nd Half Paid OCT 23 1917  
 618 PAID BY SALE AUG 1 1917  
 6178 1st Half Paid MAY 22 1917  
 4118 2nd Half Paid OCT 23 1917  
 4118 Paid in Full MAY 25 1917  
 4118 2nd Half Paid OCT 23 1917

9104  
 4908  
 3406 ✓  
 5406 ✓  
 653  
 9356  
 6585  
 10525  
 5228  
 5018  
 10525  
 5228

618 62  
 3089 ✓  
 3089 ✓  
 2059 ✓  
 2059 ✓  
 4118 ✓  
 2059 ✓  
 2059 ✓

3201

29962



Tax List of Real Property in the Village of Cass Lake

IN WHOSE NAME ASSESSED	TO WHOM TRANSFERRED	Sold for Taxes	SUBDIVISION	Sec. or Lot	Town or Block	Rng.	No. of Acres		VALUATION	GENERAL TAXES			Ditch No.			
							Acres	100ths		Mills		Bonds				
									Dollars	\$	Cts.	\$	Cts.	\$	Cts.	
<i>Original Plat</i>																
<i>Footings Brought Forward</i>																
Joseph Letendre				1	3				220							
G. H. Mackey				2					165							
Paul Koala				3					66							
A. S. Cummings				4					330							
Martha Dedrick				5					165							
"				6					66							
John Linds Sumner				7					110							
A. Cronberg				10					66							
Selma Olson				11					44							
St. Charles Church				12					44							
P. M. Larson				13					44							
Emma L. Johnson				8					432							
"				9					252							
Frank Carrier				1	4				44							
"				2					330							
Maria P. Coats				3					33							
"				4					165							
"				5					33							
<i>Footings Carried Forward</i>									2057							

Cass County, Minnesota, for Taxes of the Year 1916

SCHOOL DISTRICT	TOTAL TAXES	PAID	WHEN PAID	No. of Receipt	March Settlement	June Settlement	Penalty	November Settlement	Penalty	Collections to First Monday in January	Penalty	Delinquent on First Monday in January	REMARKS			
														District No.	District No.	District No.
District No.	Rate	Rate	Rate	Rate	Rate	Rate	Rate	Rate	Rate	Rate	Rate	Rate	Rate			
\$	Cts.	\$	Cts.	\$	Cts.	\$	Cts.	\$	Cts.	\$	Cts.	\$	Cts.			
			Month	Day	Year				\$	Cts.	\$	Cts.	\$	Cts.	\$	Cts.
2059	1st Half Paid	1544	✓	MAY 31	1917	8613										
3089	Paid in Full	3089	✓	MAY 2	1917	3309						1029	154 11.83			
1544	1st Half Paid	1544	✓	MAY 31	1917	6578										
618	1st Half Paid	618	✓	MAY 31	1917	1081						618	93 7.11			
1020	1st Half Paid	1020	✓	MAY 28	1917	8671										
618	2nd Half Paid	618	✓	MAY 28	1917	5188						515	77 5.92			
412	1st Half Paid	412	✓	MAY 22	1917	4908										
412	1st Half Paid	412	✓	MAY 22	1917	895										
412	1st Half Paid	412	✓	MAY 22	1917	895						412	62 4.74			
1236	2nd Half Paid	1236	✓	OCT 31	1917	10305										
1236	1st Half Paid	1236	✓	MAY 31	1917	6592										
412	Paid in Full	412	✓	MAY 19	1917											
3089	Paid in Full	3089	✓	MAY 19	1917	4192						3810				
309	Paid in Full	309	✓	MAY 19	1917											
1544	Paid in Full	1544	✓	MAY 31	1917											
309	Paid in Full	309	✓	MAY 31	1917	3977						1853				
19255																



















Tax List of Real Property in the Village of Cass Lake

Cass County, Minnesota, for Taxes of the Year 1916

IN WHOSE NAME ASSESSED	TO WHOM TRANSFERRED	Sold for Taxes	SUBDIVISION	Sec. or Lot	Town or Block	No. of Acres	VALUATION	GENERAL TAXES			Ditch	SCHOOL DISTRICT		TOTAL TAXES	PAID	WHEN PAID	No. of Receipt	March Settlement	June Settlement	Penalty	November Settlement	Penalty	Collections to First Monday in January	Penalty	Delinquent on First Monday in January	REMARKS
								State	County	Local		State	School													
			Original Plat				Dollars	\$	Cts.	\$	Cts.	\$	Cts.													
			Footings Brought Forward																							
Andy W. Johnson			E. 25' of N. 50' of Lots 10-11-12	8			253		2368																	
<del>Leitch Bartlett</del>			<del>E. 25' of N. 50' of Lot 9 Duplicate</del>	"																						
A. D. Stephens			E. 25' of N. 75' of Lots 9-10-11	12			1195		4633																	
A. Bergswanson			E. 25' of N. 100' of " 9-10-11	12			550		5148																	
Farmers Natl. Bk. of Alexandria			S. 12' of E. 23' of W. 122' of Lots 9-10-11	12			550		5148																	
John Osborn			E. 17' of Lots 9-10-11 & 12 Except No. 8 ft	"			330		3089																	
Malpin & McDonald				13			198		1853		400															
Tri State Land Co.				14			198		1853		75															
"				15			198		1853																	
"				16			198		1853																	
"				17			154		1441																	
Village of Cass Lake			S 1/2 of	18			171		721																	
"			N 1/2 of	18																						
"				19																						
Cass Land Co.				20																						
Tri State Land Co.				21			233		2181																	
"				22			123		1151																	
"				23			123		1151																	
H. L. Hartley				24			132		1236																	
			Footings Carried Forward				3812		35679		475															

2nd Half Paid OCT 31 1917  
 2368 1st Half Paid MAY 31 1917 18305  
 1184 1184 ✓

4633 ✓ Paid subsequent to Cert. No. 414  
 5148 2nd Half Paid OCT 16 1917 8788  
 5148 1st Half Paid MAY 30 1917 5448  
 5148 3979  
 3089 Paid in Full JAN 25 1917 307  
 2253 Paid in Full OCT 1 1917  
 1928 Paid in Full OCT 1 1917 8389  
 1853 2nd Half Paid OCT 23 1917  
 1853 1st Half Paid MAY 22 1917 4181 418  
 1853 2nd Half Paid OCT 23 1917 } 9106  
 1853 1st Half Paid MAY 22 1917 }  
 1441 2nd Half Paid OCT 23 1917 } 1410  
 1441 1st Half Paid MAY 22 1917 }  
 721 2nd Half Paid OCT 23 1917 }  
 721 1st Half Paid MAY 22 1917 }

5328 6938  
 5148 772 5920

8389  
 9106  
 1410  
 9106  
 4910

2934 2934 ✓  
 2859 2859 ✓







Tax List of Real Property in the Village of Cass Lake

Cass County, Minnesota, for Taxes of the Year 1916

22501  
1050

IN WHOSE NAME ASSESSED	TO WHOM TRANSFERRED	Sold for Taxes	SUBDIVISION	Sec. or Lot	Town or Block	No. of Acres	VALUATION	GENERAL TAXES			SCHOOL DISTRICT				TOTAL TAXES	PAID	WHEN PAID	No. of Receipt	March Settlement	June Settlement	Penalty	November Settlement	Penalty	Collections to First Monday in January	Penalty	Delinquent on First Monday in January	REMARKS									
								Mills			District		Ditch No.	District No.														District Rate	District Rate	March	June	November	Penalty	Collections	Penalty	Delinquent
								State Sch'l	County	Local Sch'l	No.	Rate																								
Original Plat																																				
Footings Brought Forward																																				
Michael Eagan	Annex Eckeron and 2 Carl M. Hendrickson			19	9		517																													
Michael Eagan				20			433																													
Clement Smith	No. 20' of lot 13 and			14			380																													
C.F. Nelson	So. 100' of lot			13			1232																													
Cass Land Co.	lots 21 &			22			244																													
Henry Baum	600 ft			24			2222																													
Heldoge & Latendre	S. 25 ft. of No. 50 ft. of lots 23 &			24			55																													
Patrick Cain	N. 25 ft. of lots 23 &			24			440																													
Ed. L. Warren & B. L. Fairbanks				1	10		1925																													
Chas. H. Kahout				2			176																													
Sam Sutor				3			506																													
H. J. Allerton				4			550																													
J. T. Gardner				5			807																													
J. Lindberg				6			852																													
L. H. Burnidge				7			176																													
				8			616																													
				9			176																													
							11277																													
Footings Carried Forward																																				
															1055.53																					

4839 Paid in Full MAY 19 1917

7053 Paid in Full MAY 31 1917

3089 2nd Half Paid OCT 31 1917

11532 1st Half Paid MAY 31 1917

2471 2nd Half Paid OCT 23 1917

20798 1st Half Paid MAY 22 1917

20798 Paid in Full FEB 23 1917

515 ✓

4118 ✓

18018 1st Half Paid APR 10 1917

1647 1st Half Paid APR 10 1917

4736 1st Half Paid MAY 31 1917

5148 Paid in Full OCT 15 1917

7554 Paid in Full FEB 28 1917

7975 2nd Half Paid OCT 26 1917

1647 1st Half Paid MAY 31 1917

1647 2nd Half Paid OCT 23 1917

5766 1st Half Paid MAY 19 1917

1647 2nd Half Paid OCT 31 1917

1647 1st Half Paid MAY 19 1917

3089 4163 35.52

4118 618 47.36

9009 13.51 103.60

824 1124 91.48

Abatement # 44337

20798 ✓

7554

3988 ✓

823 ✓

3707 ✓

3706 ✓

2368 ✓

2368 ✓

3987 ✓

823 ✓

823 ✓

10552

4194

3706 ✓

3706 ✓

2368 ✓

2368 ✓

3987 ✓

823 ✓

823 ✓

10552

4194

3706 ✓

3706 ✓











Tax List of Real Property in the Village of Cass Lake

Cass County, Minnesota, for Taxes of the Year 1916

IN WHOSE NAME ASSESSED	TO WHOM TRANSFERRED	Sold for Taxes	SUBDIVISION	Sec. or Lot	Town or Block	No. of Acres	VALUATION	GENERAL TAXES			Ditch No.		
								State	County	Total			
			Original Plat				Dollars	\$	Cts.	\$	Cts.	\$	Cts.
			Footings Brought Forward										
Cass Land Co. & Tri State Land Co.				3	12		44						
"				4			44						
"				5			44						
"				6			44						
Martin Smith				7			44						
Cass Land Co. & Tri State Land Co.				8			44						
"				9			44						
"				10			44						
"				11			44						
"				12			44						
"				13			44						
"				14			44						
"				1	13		44						
"				2			44						
"				3			44						
"				4			44						
A. L. Graham				5			44						
Tri State Land Co.				6			44						
Hamm Brewing Co.				7			44						
							238						
							1012						
			Footings Carried Forward										

SCHOOL DISTRICT	TOTAL TAXES	PAID	WHEN PAID	No. of Receipt	March Settlement	June Settlement	Penalty	November Settlement	Penalty	Collections to First Monday in January	Penalty	Delinquent on First Monday in January	REMARKS
District No. 2													
	\$	Cts.	Month Day Year		\$	Cts.	\$	Cts.	\$	Cts.	\$	Cts.	
			2nd Half Paid OCT 22 1917										
			1st Half Paid MAY 22 1917										
			2nd Half Paid OCT 22 1917										
			1st Half Paid MAY 22 1917										
			2nd Half Paid OCT 22 1917										
			1st Half Paid MAY 22 1917										
			2nd Half Paid OCT 22 1917										
			1st Half Paid MAY 22 1917										
			2nd Half Paid OCT 22 1917										
			1st Half Paid MAY 22 1917										
			2nd Half Paid OCT 22 1917										
			1st Half Paid MAY 22 1917										
			2nd Half Paid OCT 22 1917										
			1st Half Paid MAY 22 1917										
			2nd Half Paid OCT 22 1917										
			1st Half Paid MAY 22 1917										
			2nd Half Paid OCT 22 1917										
			1st Half Paid MAY 22 1917										
			2nd Half Paid OCT 22 1917										
			1st Half Paid MAY 22 1917										
			2nd Half Paid OCT 22 1917										
			1st Half Paid MAY 22 1917										
			2nd Half Paid OCT 22 1917										
			1st Half Paid MAY 22 1917										
			2nd Half Paid OCT 22 1917										
			1st Half Paid MAY 22 1917										
			2nd Half Paid OCT 22 1917										
			1st Half Paid MAY 22 1917										
			2nd Half Paid OCT 22 1917										
			1st Half Paid MAY 22 1917										
			2nd Half Paid OCT 22 1917										
			1st Half Paid MAY 22 1917										
			2nd Half Paid OCT 22 1917										
			1st Half Paid MAY 22 1917										
			2nd Half Paid OCT 22 1917										
			1st Half Paid MAY 22 1917										
			2nd Half Paid OCT 22 1917										
			1st Half Paid MAY 22 1917										
			2nd Half Paid OCT 22 1917										
			1st Half Paid MAY 22 1917										
			2nd Half Paid OCT 22 1917										
			1st Half Paid MAY 22 1917										
			2nd Half Paid OCT 22 1917										
			1st Half Paid MAY 22 1917										
			2nd Half Paid OCT 22 1917										
			1st Half Paid MAY 22 1917										
			2nd Half Paid OCT 22 1917										
			1st Half Paid MAY 22 1917										
			2nd Half Paid OCT 22 1917										
			1st Half Paid MAY 22 1917										
			2nd Half Paid OCT 22 1917										
			1st Half Paid MAY 22 1917										
			2nd Half Paid OCT 22 1917										
			1st Half Paid MAY 22 1917										
			2nd Half Paid OCT 22 1917										
			1st Half Paid MAY 22 1917										
			2nd Half Paid OCT 22 1917										
			1st Half Paid MAY 22 1917										
			2nd Half Paid OCT 22 1917										
			1st Half Paid MAY 22 1917										
			2nd Half Paid OCT 22 1917										
			1st Half Paid MAY 22 1917										
			2nd Half Paid OCT 22 1917										
			1st Half Paid MAY 22 1917										
			2nd Half Paid OCT 22 1917										
			1st Half Paid MAY 22 1917										
			2nd Half Paid OCT 22 1917										
			1st Half Paid MAY 22 1917										
			2nd Half Paid OCT 22 1917										
			1st Half Paid MAY 22 1917										
			2nd Half Paid OCT 22 1917										
			1st Half Paid MAY 22 1917										
			2nd Half Paid OCT 22 1917										
			1st Half Paid MAY 22 1917										
			2nd Half Paid OCT 22 1917										
			1st Half Paid MAY 22 1917										
			2nd Half Paid OCT 22 1917										
			1st Half Paid MAY 22 1917										
			2nd Half Paid OCT 22 1917										
			1st Half Paid MAY 22 1917										
			2nd Half Paid OCT 22 1917										
			1st Half Paid MAY 22 1917										
			2nd Half Paid OCT 22 1917										
			1st Half Paid MAY 22 1917										
			2nd Half Paid OCT 22 1917										
			1st Half Paid MAY 22 1917										
			2nd Half Paid OCT 22 1917										
			1st Half Paid MAY 22 1917										
			2nd Half Paid OCT 22 1917										
			1st Half Paid MAY 22 1917										
			2nd Half Paid OCT 22 1917										
			1st Half Paid MAY 22 1917										
			2nd Half Paid OCT 22 1917										
			1st Half Paid MAY 22 1917										
			2nd Half Paid OCT 22 1917										
			1st Half Paid MAY 22 1917										
			2nd Half Paid OCT 22 1917										
			1st Half Paid MAY 22 1917										
			2nd Half Paid OCT 22 1917										
			1st Half Paid MAY 22 1917										
			2nd Half Paid OCT 22 1917										
			1st Half Paid MAY 22 1917										
			2nd Half Paid OCT 22 1917										
			1st Half Paid MAY 22 1917										
			2nd Half Paid OCT 22 1917										



Tax List of Real Property in the Village of Cass Lake

Cass County, Minnesota, for Taxes of the Year 1916

IN WHOSE NAME ASSESSED	TO WHOM TRANSFERRED	Sold for Taxes	SUBDIVISION	Sec. or Lot	Town or Block	Eng.	No. of Acres	VALUATION	GENERAL TAXES			Ditch No.	SCHOOL DISTRICT		TOTAL TAXES	PAID	WHEN PAID	No. of Receipt	March Settlement	June Settlement	Penalty	November Settlement	Penalty	Collections to First Monday in January	Penalty	Delinquent on First Monday in January	REMARKS																
									State Sch'l	State School Bonds	Mills		District No.	District Rate																													
									Dollars	\$	Cts.	\$	Cts.	\$	Cts.	Month	Day	Year	\$	Cts.	\$	Cts.	\$	Cts.	\$	Cts.	\$	Cts.	\$	Cts.													
			Original Plat																																								
			Footings Brought Forward																																								
Laura Abercrombie	Cass Land Co. + Tri State Land Co.			1	14			88							824	2nd Half Paid	OCT 23 1917																										
"	"			2				88							824	1st Half Paid	MAY 22 1917																										
"	"			3				88							824	2nd Half Paid	OCT 23 1917																										
"	"			4				88							824	1st Half Paid	MAY 22 1917																										
"	"			5				88							824	2nd Half Paid	OCT 23 1917																										
"	"			6				88							824	1st Half Paid	MAY 22 1917																										
"	"			7				88							824	2nd Half Paid	OCT 23 1917																										
"	"			8				88							824	1st Half Paid	MAY 22 1917																										
"	"			9				88							824	2nd Half Paid	OCT 23 1917																										
"	"			10				88							824	1st Half Paid	MAY 22 1917																										
"	"			11				88							824	2nd Half Paid	OCT 23 1917																										
"	"			12				88							824	1st Half Paid	MAY 22 1917																										
Cass Land Co.	"			1	15			132							1236	✓																											
"	"			2				132							1236	✓																											
Tri State Land Co. & Cass Land Co.	"			3				132							1236	2nd Half Paid	OCT 23 1917																										
"	"			4				132							1236	1st Half Paid	MAY 22 1917																										
"	"			5				132							1236	2nd Half Paid	OCT 23 1917																										
"	"			6				132							1236	1st Half Paid	MAY 22 1917																										
O. M. Beauregard	"			7				132							1236	1st Half Paid	MAY 22 1917																										
									1980																																		
			Footings Carried Forward																																								
															18540																												

9198 4944 4944 ✓

9108 4912 2472 2472 ✓

4216 adz







Tax List of Real Property in the Village of Cass Lake

Cass County, Minnesota, for Taxes of the Year 1916

IN WHOSE NAME ASSESSED	TO WHOM TRANSFERRED	Sold for Taxes	SUBDIVISION	Sec. or Lot	Town or Block	No. of Acres	VALUATION	GENERAL TAXES			SCHOOL DISTRICT		TOTAL TAXES	PAID	WHEN PAID	No. of Receipt	March Settlement	June Settlement	Penalty	November Settlement	Penalty	Collections to First Monday in January	Penalty	Delinquent on First Monday in January	REMARKS
								Mills	State	Ditch	District No.	District No.													
							Dollars	\$	Cts.	\$	Cts.	\$	Cts.												
			Original Plat																						
			Footings Brought Forward																						
Tristate Land Co & Cass Land Co.				3	17		6							2nd Half Paid	OCT 23	1917									
"				4			6							56	1st Half Paid	MAY 22	1917								
"				5			6							56	1st Half Paid	MAY 22	1917								
"				6			6							56	1st Half Paid	MAY 22	1917								
"				7			6							56	1st Half Paid	MAY 22	1917								
"				8			6							56	1st Half Paid	MAY 22	1917								
"				9			6							56	1st Half Paid	MAY 22	1917								
"				10			6							56	1st Half Paid	MAY 22	1917								
"				11			6							56	1st Half Paid	MAY 22	1917								
"				12			6							56	1st Half Paid	MAY 22	1917								
"				13			6							56	1st Half Paid	MAY 22	1917								
"				14			6							56	1st Half Paid	MAY 22	1917								
"				15			6							56	1st Half Paid	MAY 22	1917								
"				16			6							56	1st Half Paid	MAY 22	1917								
"				17			6							56	1st Half Paid	MAY 22	1917								
"				18			6							56	1st Half Paid	MAY 22	1917								
"				19			6							56	1st Half Paid	MAY 22	1917								
"				20			6							56	1st Half Paid	MAY 22	1917								
"				21			6							56	1st Half Paid	MAY 22	1917								
"				22			6							56	1st Half Paid	MAY 22	1917								
			Footings Carried Forward	23			6							56	1st Half Paid	MAY 22	1917								
							126																		

9189  
588. 588 ✓

1176















Tax List of Real Property in the Village of Cass Lake

Cass County, Minnesota, for Taxes of the Year 1916

IN WHOSE NAME ASSESSED	TO WHOM TRANSFERRED	Sold for Taxes	SUBDIVISION	Sec. or Lot	Town or Block	Rdg.	No. of Acres Acres 100ths	VALUATION Dollars	GENERAL TAXES			SCHOOL DISTRICT		TOTAL TAXES	PAID	WHEN PAID	No. of Receipt	March Settlement	June Settlement	Penalty	November Settlement	Penalty	Collections to First Monday in January	Penalty	Delinquent on First Monday in January	REMARKS	
									State Mills	County Mills	Local Sch'l Mills	State School Bonds	Ditch No.														District No.
			Original Plat						\$	Cts.	\$	Cts.	\$	Cts.													
			Footings Brought Forward																								
Iri State & Cass Land Co.				13	20			6																			
"				14				6																			
Peter Mc Dermid			Lots 1 & 2	2	21			176																			
James K. Mc Donald				3				6																			
"				4				6																			
"				5				160																			
The Cass Land C. & L. Co.				6				6																			
"				7				160																			
Frank Carpenter Sr.				8				160																			
"				9				6																			
Christina Sauer				10				160																			
Elizabeth Riley				11				160																			
"				12				115																			
Cass Land Co.				13				3																			
"				13				3																			
J. F. Rodwell				14				115																			
			Footings Carried Forward						1248																		

2nd Half Paid OCT 22 1917  
 56 1st Half Paid MAY 22 1917 } 9109  
 56 2nd Half Paid OCT 22 1917 } 4913  
 56 1st Half Paid MAY 22 1917 }  
 1647 Paid in Full MAY 31 1917 } 6594  
 56 Paid in Full FEB 10 1917 }  
 56 Paid in Full FEB 10 1917 } 646  
 1498 Paid in Full FEB 10 1917 }  
 56 2nd Half Paid OCT 31 1917 }  
 1498 1st Half Paid MAY 31 1917 } 10011  
 1498 1st Half Paid MAY 31 1917 } 5698  
 1498 Paid in Full MAY 24 1917 }  
 56 Paid in Full MAY 21 1917 } 4687  
 1498 Paid in Full AUG 15 1917 } 8109  
 1498 Paid subsequent to Cert. No. 1749 }  
 1076 } v  
 28 } 9.54 v  
 28 } v  
 1076 } v

56. 56 v  
 1647.  
 1610 v  
 777. 777 v  
 1554 v  
 1498 v 150  
 1723.6945

Abatement #50928; Auditor's No. 23



Tax List of Real Property in the Village of Cass Lake

Cass County, Minnesota, for Taxes of the Year 1916

IN WHOSE NAME ASSESSED	TO WHOM TRANSFERRED	Sold for Taxes	SUBDIVISION	Sec. or Lot	Town or Block	Rng.	No. of Acres		VALUATION	GENERAL TAXES				SCHOOL DISTRICT		TOTAL TAXES	PAID	WHEN PAID	No. of Receipt	March Settlement	June Settlement	Penalty	November Settlement	Penalty	Collections to First Monday in January	Penalty	Delinquent on First Monday in January	REMARKS
							Acres	100ths		Mills		Ditch No.	District No.	District Rate	District Rate													
							Dollars			\$	Cts.	\$	Cts.	\$	Cts.													
			Original Plat																									
			Footings Brought Forward																									
Tri State Land Co. & Cass Land Co.				1	22				6																			
"				2					6																			
"				3					6																			
"				4					6																			
"				5					6																			
"				6					6																			
Andrew Blais Amanda Blais Leo Flak	Ho. Curtis			7				116																				
"				8					6																			
H. J. Knopf				9				176																				
Tri State Land Co. & Cass Land Co.				10				176																				
"				11					6																			
"				12					6																			
"				13					6																			
"				14					6																			
"				15					6																			
"				16					6																			
"				17					6																			
Elverton J. Howard				18					6																			
"				19					6																			
"				20					6																			
			Footings Carried Forward						570																			

56 Paid 5 31 18 8580  
 56 " " " " "  
 56 " " " " "  
 56 " " " " "  
 56 " " " " "  
 56 " " " " "  
 1086 Paid in Full AUG 31 1917 8170  
 56 Paid in Full MAY 31 1917  
 1647 Paid in Full MAY 31 1917 } 6597  
 2nd Half Paid OCT 29 1917 } 9355  
 1647 1st Half Paid MAY 21 1917 } 5670  
 2nd Half Paid OCT 23 1917 }  
 56 1st Half Paid MAY 22 1917 } 9109  
 2nd Half Paid OCT 28 1917 } 4913  
 56 1st Half Paid MAY 22 1917 }  
 56 Paid in run MAY 1 1 1917  
 56 Paid in run MAY 1 1 1917  
 56 Paid in run MAY 1 1 1917 } 3613  
 56 Paid in run MAY 1 1 1917  
 56 Paid in run MAY 1 1 1917  
 56 Paid in run MAY 1 1 1917  
 56 Paid in run MAY 1 1 1917  
 56 Paid in run MAY 1 1 1917

56 .08 64  
 56  
 56  
 56  
 56  
 56  
 1086 ✓ 109  
 1703 ✓  
 824 ✓ 823 ✓  
 56 ✓ 56 ✓  
 448 ✓  
 Pd. under Protest

53 32



Tax List of Real Property in the Village of Cass Lake

Cass County, Minnesota, for Taxes of the Year 1916

IN WHOSE NAME ASSESSED	TO WHOM TRANSFERRED	Sold for Taxes	SUBDIVISION	Sec. or Lot	Town or Block	No. of Acres Acres 100ths	GENERAL TAXES				Ditch No.	SCHOOL DISTRICT			TOTAL TAXES	PAID	WHEN PAID	No. of Receipt	March Settlement	June Settlement	Penalty	November Settlement	Penalty	Collections to First Monday in January	Penalty	Delinquent on First Monday in January	REMARKS										
							VALUATION		Mills			State School	State Bonds	District No.														District Rate	District Mills	March	June	Penalty	November	Penalty	Collections	Penalty	Delinquent
							Dollars	Cts.	\$	Cts.																											
			Original Plat																																		
			Footings Brought Forward																																		
Elverton J. Howard				21	22		6																														
"				22			55																														
"				23			6																														
"				24			6																														
Tri State Land Co. & Cass Land Co.				1	23		6																														
"				2			6																														
"				3			6																														
"				4			6																														
"				5			6																														
"				6			6																														
"				7			6																														
David Jones				8			6																														
"				9			6																														
"				10			6																														
"				11			6																														
Tri State Land Co.				12			116																														
"				13			6																														
"				14			6																														
"				15			6																														
							773																														
			Footings Carried Forward																																		

56 Paid in Full MAR 27 1917  
 56 Paid in Full MAR 27 1917 } 3613  
 56 Paid in Full MAR 27 1917  
 56 Paid in Full MAR 27 1917  
 2nd Half Paid OCT 22 1917  
 56 1st Half Paid MAY 22 1917  
 56 2nd Half Paid OCT 22 1917  
 56 1st Half Paid MAY 22 1917 } 9109  
 56 2nd Half Paid OCT 22 1917 } 4913  
 56 1st Half Paid MAY 22 1917  
 56 2nd Half Paid OCT 22 1917  
 56 1st Half Paid MAY 22 1917  
 56 2nd Half Paid OCT 22 1917  
 56 1st Half Paid MAY 22 1917  
 56 2nd Half Paid OCT 22 1917  
 56 Paid in Full MAR 27 1917  
 56 Paid in Full MAR 27 1917 } 2541  
 56 Paid in Full MAR 27 1917  
 1086 Paid in Full MAR 27 1917  
 56 2nd Half Paid OCT 22 1917  
 56 1st Half Paid MAY 22 1917 } 9110  
 56 2nd Half Paid OCT 22 1917 } 4914  
 56 1st Half Paid MAY 22 1917 } 84  
 56 2nd Half Paid OCT 22 1917 } 84 ✓

2553















Tax List of Real Property in the Village of Cass Lake

Cass County, Minnesota, for Taxes of the Year 1916

IN WHOSE NAME ASSESSED	TO WHOM TRANSFERRED	Sold for Taxes	SUBDIVISION	Sec. or Lot	Town or Block	No. of Acres Acres 100ths	GENERAL TAXES			SCHOOL DISTRICT		TOTAL TAXES	PAID	WHEN PAID	No. of Receipt	March Settlement	June Settlement	Penalty	November Settlement	Penalty	Collections to First Monday in January	Penalty	Delinquent on First Monday in January	REMARKS			
							VALUATION	State Mills	County Mills	Local Sch'l Mills	Total Mills														State School	Ditch No.	District No.
<i>Original Plat</i>																											
<i>Footings Brought Forward</i>																											
Tri State Land Co.				1	27																						
A. F. Gold	Emma Suedel			2		116																					
White Seure				3																							
A. J. binville				4																							
Cass Land Co				5																							
John Mc Gregor				6																							
Christina Finn				7		143																					
M. Auger				8																							
M. Seuregard				9																							
Cass Land Co				10																							
John Lawton				11																							
				12																							
A. Blair	Joseph Leland Peter Nordin			1	28																						
J. Palant				2																							
Peter Nordin				3																							
Homer H. Dugas				4																							
Cass Land Co				5																							
Wanda Dugas				6																							
				7																							
<i>Footings Carried Forward</i>							491																				

2nd Half Paid OCT 22 1917 9110  
 56 1st Half Paid MAY 22 1917 4914  
 1086 Paid in full FEB 10 1917 644  
 56 ✓  
 56 ✓  
 618 ✓  
 618 ✓  
 1338 Paid in full JUN 20 1917 1748  
 56 2nd Half Paid OCT 22 1917  
 56 1st Half Paid MAY 22 1917 }  
 56 2nd Half Paid OCT 22 1917 } 9110  
 56 1st Half Paid MAY 22 1917 } 4914  
 56 2nd Half Paid OCT 22 1917 }  
 56 1st Half Paid MAY 22 1917 }  
 56 2nd Half Paid OCT 22 1917 }  
 56 1st Half Paid MAY 22 1917 }  
 56 Paid in Full JAN 11 1917 } 67  
 56 Paid in Full JAN 11 1917 } 112 ✓  
 56 Paid in Full MAY 14 1917 }  
 56 Paid in Full MAY 14 1917 } 3748  
 56 Paid in Full MAY 31 1917 } 112 ✓  
 56 Paid in Full MAY 31 1917 } 5975  
 56 Paid in Full MAY 31 1917 } 7309  
 56 ✓

11500



































Tax List of Real Property in the Village of Cass Lake

Cass County, Minnesota, for Taxes of the Year 1916

IN WHOSE NAME ASSESSED	TO WHOM TRANSFERRED	Sold for Taxes	SUBDIVISION	Sec. or Lot	Town or Block	Reg.	No. of Acres		VALUATION	GENERAL TAXES			Ditch No.	SCHOOL DISTRICT		TOTAL TAXES	PAID	WHEN PAID	No. of Receipt	March Settlement	June Settlement	Penalty	November Settlement	Penalty	Collections to First Monday in January	Penalty	Delinquent on First Monday in January	REMARKS							
							Acres	100ths		State Mills	County Mills	Local Sch'l Mills		Total	State														School	Bonds	District No.	District Rate	District Rate		
									Dollars	\$	Cts.	\$	Cts.	\$	Cts.	\$	Cts.	Month	Day	Year	\$	Cts.	\$	Cts.	\$	Cts.	\$	Cts.	\$	Cts.	\$	Cts.			
<i>Second Division</i>																																			
<i>Footings Brought Forward</i>																																			
Tri State Land Co. & Cass Land Co.				1	37				6							56	2nd Half Paid OCT 22 1917																		
"				2					6							56	1st Half Paid MAY 22 1917																		
"				3					6							56	1st Half Paid MAY 22 1917	9113			112.														
"				4					6							56	2nd Half Paid OCT 22 1917																		
Joe Weber	Browerville State Bank			5				138								1292	1st Half Paid MAY 10 1917	4091																	
"	"			6					6							56	1st Half Paid MAY 10 1917	3564			674.														
Tri State Land Co. & Cass Land Co.				7					6							56	1st Half Paid MAY 22 1917																		
"				8					6							56	1st Half Paid MAY 22 1917																		
"				9					6							56	1st Half Paid MAY 22 1917																		
"				10					6							56	1st Half Paid MAY 22 1917	9113			224.														
"				11					6							56	1st Half Paid MAY 22 1917	4916																	
"				12					6							56	1st Half Paid MAY 22 1917																		
"				13					6							56	1st Half Paid MAY 22 1917																		
"				14					6							56	1st Half Paid MAY 22 1917																		
Jerome Company				15					6							56	1st Half Paid MAY 22 1917																		
"				16					6							56	1st Half Paid MAY 22 1917																		
Tri State Land Co. & Cass Land Co.				17					6							56	1st Half Paid MAY 22 1917	5706			112.														
"				18					6							56	1st Half Paid MAY 22 1917	9113			112.														
"				19					6							56	1st Half Paid MAY 22 1917	4916																	
"				20					6							56	1st Half Paid MAY 22 1917																		
<i>Footings Carried Forward</i>									252						2356																				











Tax List of Real Property in the Village of Cass Lake

Cass County, Minnesota, for Taxes of the Year 1916

IN WHOSE NAME ASSESSED	TO WHOM TRANSFERRED	Sold for Taxes	SUBDIVISION	Sec. or Lot	Town or Block	No. of Acres	VALUATION	GENERAL TAXES			SCHOOL DISTRICT		TOTAL TAXES	PAID	WHEN PAID	No. of Receipt	March Settlement	June Settlement	Penalty	November Settlement	Penalty	Collections to First Monday in January	Penalty	Delinquent on First Monday in January	REMARKS		
								State Mills	State Sch'l	Local Sch'l	Total	District No.														District Rate	
			Second Division				Dollars	\$	Cts.	\$	Cts.	\$	Cts.	Month	Day	Year	\$	Cts.	\$	Cts.	\$	Cts.	\$	Cts.	\$	Cts.	
			Footings Brought Forward																								
Tri State Land Co & Cass Land Co.				9	39		6																				
"				10			6																				
"				11			6																				
"				12			6																				
"				13			6																				
"				14			6																				
"				15			6																				
"				16			6																				
"				17			6																				
"				18			6																				
"				19			6																				
"				20			6																				
"				21			6																				
"				22			6																				
"				23			6																				
"				24			6																				
"				1	40		1																				
"				2			1																				
"				3			1																				
"				4			1																				
"				24			22																				
			Footings Carried Forward																								
							122																				



















Tax List of Real Property in the Village of Cass Lake

Cass County, Minnesota, for Taxes of the Year 1916

IN WHOSE NAME ASSESSED	TO WHOM TRANSFERRED	Sold for Taxes	SUBDIVISION	Sec. or Lot	Town or Block	Rng.	No. of Acres		VALUATION	GENERAL TAXES			SCHOOL DISTRICT		TOTAL TAXES	PAID	WHEN PAID	No. of Receipt	March Settlement	June Settlement	Penalty	November Settlement	Penalty	Collections to First Monday in January	Penalty	Delinquent on First Monday in January	REMARKS			
							Acres	100ths		Mills		State School Bonds	Ditch No.	District No.														District No.	Rate	Rate
							Dollars	¢		¢	¢			¢														¢		
Footings Brought Forward																														
James Kennedy	Alice L. Sundrigan		West	1	2				253																					
"	"			2					33																					
Albert Sabata				3					33																					
"				4					33																					
Jennie Scott				5					28																					
"				6					33																					
Annie Hatfield				7					88																					
"				8					121																					
Louis Sitzer				9					33																					
"				10					253																					
"				11					33																					
Helen Barty	Olive Bell			12					33																					
"				13					88																					
Henry Smith				14					33																					
"				15					33																					
"				16					33																					
"				17					28																					
"				18					33																					
									1227																					
Footings Carried Forward																														
									1227																					

2368 Paid in Full MAY 25 1917  
 309 Paid in Full MAY 25 1917 } 5020  
 309 Paid in Full MAY 25 1917 }  
 309 ✓  
 824 ✓  
 309 Paid in Full OCT 31 1917 } 10435  
 824 Paid in Full OCT 31 1917 }  
 1133 Paid subsequent to Cert. No. 4755  
 309 Pd ✓ 10 4 18 8690  
 2368 Paid in Full MAY 28 1917  
 309 Paid in Full MAY 28 1917 } 5189  
 309 Paid in Full MAY 28 1917 }  
 824 Paid in Full MAY 9 1917 }  
 309 Paid in Full MAY 9 1917 } 3499  
 309 ✓  
 309 ✓  
 309 ✓  
 309 ✓

2986r

1133 113

1302 6949  
 Abatement No. 4807d

2986r

1133r

309 46 3.55  
 309  
 309  
 309

12019







Tax List of Real Property in the Village of Cass Lake

Cass County, Minnesota, for Taxes of the Year 1916

IN WHOSE NAME ASSESSED	TO WHOM TRANSFERRED	Sold for Taxes	SUBDIVISION	Sec. or Lot	Town or Block	No. of Acres	VALUATION	GENERAL TAXES			SCHOOL DISTRICT		TOTAL TAXES	PAID	WHEN PAID	No. of Receipt	March Settlement	June Settlement	Penalty	November Settlement	Penalty	Collections to First Monday in January	Penalty	Delinquent on First Monday in January	REMARKS
								Mills		Ditch No.	District No.	District Rate													
								State	Local																
Footings Brought Forward							Dollars	\$	Cts.	\$	Cts.	\$	Cts.												
Ida Wege			West	1	4		22																		
"				2			22																		
Mrs. Lena Hromeveld				3			22																		
"				4			110																		
Alice L. Lundrigan				5			22																		
"				6			22																		
"				7			22																		
"				8			22																		
"				9			275																		
Ben McKinnon				10			110																		
"				11			22																		
"				12			22																		
Leo C. McGuire				13			22																		
"				14			22																		
"				15			22																		
"				16			220																		
"				17			22																		
"				18			22																		
Footings Carried Forward							1023																		

206 }  
 206 } Paid Feb 19 1918 8x67  
 206 Paid in Full MAY 31 1917  
 1030 Paid in Full MAY 31 1917 } 6792  
 206 Paid in Full MAR 30 1917  
 206 Paid in Full MAR 30 1917 } 2599  
 206 Paid in Full MAR 30 1917 } 3398  
 2574 Paid in Full MAR 30 1917  
 1030  
 206  
 206  
 206  
 206 Paid in Full OCT 19 1917  
 206 Paid in Full OCT 19 1917 } 8875  
 2059 Paid in Full OCT 19 1917 } 2883 288  
 206 Paid in Full OCT 19 1917  
 206 Paid in Full OCT 19 1917

206 31 2.37  
 206  
 1030 1.55 11.85  
 206  
 206  
 206

9577







Tax List of Real Property in the Village of Cass Lake

Cass County, Minnesota, for Taxes of the Year 1916

IN WHOSE NAME ASSESSED	TO WHOM TRANSFERRED	Sold for Taxes	SUBDIVISION	Sec. or Lot	Town or Block	No. of Acres	VALUATION	GENERAL TAXES			Ditch No.	SCHOOL DISTRICT		TOTAL TAXES	PAID	WHEN PAID	No. of Receipt	March Settlement	June Settlement	Penalty	November Settlement	Penalty	Collections to First Monday in January	Penalty	Delinquent on First Monday in January	REMARKS	
								Mills		Bonds		District No.	District No.														
								State	Local Sch'l																		State
West																											
Footings Brought Forward																											
Lydick Townsite Co.				1	6		198							1853	Paid in full	SEP 7 - 1917											
Emma Nelson				2			31							290	Paid in full	SEP 7 - 1917											
"				3			152							1423	✓												
Lewis Hayes				4			31							290	✓												
"				5			110							1030	✓												
Christie Fink				6			31							290	✓												
"				7			110							1030	Paid	Jul 18 1918	8638							1030	1.55	11.85	
Delia Christenson				8			31							290	✓												
"				9			31							290	✓												
"				10			31							290	✓												
"				11			385							3604	Paid subsequent to Cert. No.	4156											
Ethel Kennedy				12			31							290	✓												
"				13			31							290	✓												
"				14			31							290	✓												
"				15			471							4409	✓												
"				16			31							290	✓												
"				17			31							290	✓												
"				18			31							290	✓												
"				19			31							290	✓												
"				20			31							290	✓												
Footings Carried Forward																											
							1860							17409													

2143 214

1030 1.55 11.85

290 44 3.34

4143 6950

290 44 3.34

4409 6.61 50.70

290

290

290

290



Tax List of Real Property in the Village of Cass Lake

Cass County, Minnesota, for Taxes of the Year 1916

IN WHOSE NAME ASSESSED	TO WHOM TRANSFERRED	Sold for Taxes	SUBDIVISION	Sec. or Lot	Town or Block	No. of Acres	VALUATION	GENERAL TAXES			Ditch No.		SCHOOL DISTRICT		TOTAL TAXES	PAID	WHEN PAID	No. of Receipt	March Settlement	June Settlement	Penalty	November Settlement	Penalty	Collections to First Monday in January	Penalty	Delinquent on First Monday in January	REMARKS				
								State Mills	County Mills	Local Sch'l Mills	State	School	Bonds	District No.														District No.	Rate	Rate	\$
			West	Footings Brought Forward																											
P.M. Larson				21	6		31							290	✓																
"				22			220							2059	✓																
"				23			31							290	✓																
Obert M. Johnson	Theodore Vobijda			24			31							290	✓																
	"			1	7		33							309		Paid in Full APR 17 1917															
John Downes				2			200							1872		Paid in Full APR 17 1917	2925														
"				3			200							1872		Paid in Full MAY 21 1917															
Joseph J. LaFountaine				4			33							309		Paid in Full MAY 21 1917	7524														
"				5			112							1048		Paid in Full MAY 12 1917															
"				6			222							2078		Paid in Full MAY 12 1917	3671														
Lester Bartlett				7			33							309		Paid in Full MAY 12 1917															
"				8			33							309																	
Henry C. Sempf				9			68							636		2nd Half Paid NOV 12 1917															
"				10			33							309		1st Half Paid MAY 21 1917	10901														
"				11			222							2078		2nd Half Paid NOV 12 1917	7337														
"				12			33							309		1st Half Paid MAY 21 1917															
Herbert E. Waldron				14			156							1460																	
Geo. Lydick				14			20							187	✓																
A.D. Lane				15			376							3519		Paid in Full MAY 4 1917															
"				16			33							309		Paid in Full MAY 4 1917	3374														
			Swan High	Footings Carried Forward																											
							2120																								



Tax List of Real Property in the Village of Cass Lake

Cass County, Minnesota, for Taxes of the Year 1916

IN WHOSE NAME ASSESSED	TO WHOM TRANSFERRED	Sold for Taxes	SUBDIVISION	Sec. or Lot	Town or Block	No. of Acres	VALUATION	GENERAL TAXES			SCHOOL DISTRICT		TOTAL TAXES	PAID	WHEN PAID	No. of Receipt	March Settlement	June Settlement	Penalty	November Settlement	Penalty	Collections to First Monday in January	Penalty	Delinquent on First Monday in January	REMARKS	
								Mills			Ditch No.	District No.														District Rate
								State Sch'l	State School Bonds	Total	No.	Mills														
Footings Brought Forward																										
Roy Owens			West	17	7		112																			
Frank Collings			West	18	S 1/2 of		16						1048	Paid in Full	MAY 4	1917										
"			West	18	N 1/2 of		16						150	Paid in Full	MAY 21	1917										
H. M. Durringer			West	19			178						1666	Paid in Full	MAY 21	1917										
"			West	20			200						1872	1st Half Paid	SEP 16	1917										
"			West	21			33						309	2nd Half Paid	MAY 17	1917										
Christian G. Miller			West	22	S 1/2 of		16						150	1st Half Paid	MAY 17	1917										
"			West	22	N 1/2 of		16						150	2nd Half Paid	MAY 17	1917										
"			West	23			222						2078	Paid subsequent to Cert. No.	4150											2389.6951
Olivia L. C. Anderson			West	24			33						309	Paid	MAY 4	1918										
Blattmann Bros.			West	1	8		189						1769	Paid in Full	MAY 2	1917										
"			West	2			44						412	2nd Half Paid	OCT 3	1917										
"			West	3			343						3210	1st Half Paid	MAY 2	1917										
"			West	4			44						412	2nd Half Paid	OCT 2	1917										
"			West	5			44						412	1st Half Paid	MAY 2	1917										
"			West	6			189						412	2nd Half Paid	OCT 2	1917										
Farmer's Natl. Bank of Alexandria			West	7			352						1769	1st Half Paid	MAY 3	1917										
"			West	8			468						18.31													
"			West	9			198						41.58													
							2713						11.98													
Footings Carried Forward																										
												25394														

51267.69 - 58.95  
 853812.81 98.19  
 3041 4.56 34.97















Tax List of Real Property in the Village of Cass Lake

Cass County, Minnesota, for Taxes of the Year 1916

IN WHOSE NAME ASSESSED	TO WHOM TRANSFERRED	Sold for Taxes	SUBDIVISION	Sec. or Lot	Town or Block	No. of Acres	VALUATION	GENERAL TAXES			SCHOOL DISTRICT		TOTAL TAXES	PAID	WHEN PAID	No. of Receipt	March Settlement	June Settlement	Penalty	November Settlement	Penalty	Collections to First Monday in January	Penalty	Delinquent on First Monday in January	REMARKS	
								State	Mills	Ditch	District No.	District Rate														District Mills
Footings Brought Forward																										
Alfred Boutang			West	20	10		31																			
Julia Colling				21			31																			
Addie Boutang	Phillips O. Partridge			22			198																			
Napoleon LaFontaine				N/2 of	23		15																			
Addie Boutang	Phillips O. Partridge			S 1/2 of	23		15																			
Napoleon LaFontaine				24			240																			
H.L. Carter				1	11		143																			
"				2			31																			
Napoleon LaFontaine				3			121																			
"				4			121																			
Margaret Norman				5			165																			
"				6			31																			
First Natl. Bank of Cass Lake	O.C. Lowe			7			31																			
"				8			31																			
"				9			31																			
"				10			220																			
Tri State Land Co.				11			31																			
"				12			31																			
"				13			31																			
Ingebrit Salness				14			88																			
Footings Carried Forward																										



























Tax List of Real Property in the Village of Cass Lake

Cass County, Minnesota, for Taxes of the Year 1916

IN WHOSE NAME ASSESSED	TO WHOM TRANSFERRED	Sold for Taxes	SUBDIVISION	Sec. or Lot	Town or Block	No. of Acres	VALUATION	GENERAL TAXES			SCHOOL DISTRICT		TOTAL TAXES	PAID	WHEN PAID	No. of Receipt	March Settlement	June Settlement	Penalty	November Settlement	Penalty	Collections to First Monday in January	Penalty	Delinquent on First Monday in January	REMARKS								
								Mills		Ditch No.	District No.	District Rate																					
								State	County																	State School Bonds	Rate						
Footings Brought Forward																																	
Tri State Land Co.				21	17		6						56																				
"				22			6						56																				
"				23			6						56																				
"				24			6						56																				
M. J. Shelley				1	18		6						56																				
"				2			6						56																				
"				3			6						56																				
"				4			6						56																				
"				5			6						56																				
"				6			6						56																				
Nellie Lydick	Christ Moritz			7			6						56																				
Nellie Lydick	J. M. Graham			8			6						56																				
"	"			9			6						56																				
"	"			10			6						56																				
Nellie Lydick	"			11			6						56																				
Lucy Laess	"			12			2.20						56																				
Adolph Schuster	"			13			6						56																				
"	"			14			6						56																				
Frank Werge	"			15			6						56																				
"	"			16			6						56																				
Footings Carried Forward							3.34																31.23										

Tri State Land Co.  
"  
"  
"  
M. J. Shelley  
"  
"  
"  
"  
"  
"  
Nellie Lydick  
Nellie Lydick  
Nellie Lydick  
Lucy Laess  
Adolph Schuster  
Frank Werge  
"

Christ Moritz  
J. M. Graham  
" " " " " "

56 Paid in Full MAY 2 8 1917  
56 Paid in Full MAY 2 8 1917  
56 Paid in Full MAY 2 8 1917  
56 Paid in Full MAY 2 8 1917  
56 ✓  
56 ✓  
56 ✓  
56 ✓  
56 ✓  
56 Paid in Full MAR 20 1917 2420  
56 Paid in Full FEB 14 1917 460  
56 Paid in Full FEB 5 1917 510  
56 Paid in Full FEB 5 1917 510  
56 Paid in Full MAY 2 1917 2314  
20 59 Paid subsequent to Cert. No. 10656955  
1st Half Paid MAY 31 1917 7336  
56 Paid in Full MAY 31 1917  
56 Paid in Full MAY 31 1917 5703  
56 ✓  
56 ✓

5298

224

10656955

Indemnity















Tax List of Real Property in the Village of Cass Lake

Cass County, Minnesota, for Taxes of the Year 1916

IN WHOSE NAME ASSESSED	TO WHOM TRANSFERRED	Sold for Taxes	SUBDIVISION	Sec. or Lot	Town or Block	No. of Acres	GENERAL TAXES			SCHOOL DISTRICT		TOTAL TAXES	PAID	WHEN PAID	No. of Receipt	March Settlement	June Settlement	Penalty	November Settlement	Penalty	Collections to First Monday in January	Penalty	Delinquent on First Monday in January	REMARKS	
							VALUATION	Mills	Ditch No.	District No.	District Rate														
							Dollars	\$	Cts.	\$	Cts.	\$	Cts.	\$	Cts.	\$	Cts.	\$	Cts.	\$	Cts.	\$	Cts.	\$	Cts.
			<i>West</i>																						
							<i>Footings Brought Forward</i>																		
<i>TriState Land Co.</i>				<i>1</i>	<i>22</i>		<i>6</i>					<i>56</i>	<i>Paid in full</i>	<i>MAY 26 1917</i>											
"				<i>2</i>			<i>6</i>					<i>56</i>	<i>Paid in full</i>	<i>MAY 26 1917</i>											
"				<i>3</i>			<i>6</i>					<i>56</i>	<i>Paid in full</i>	<i>MAY 26 1917</i>											
"				<i>4</i>			<i>6</i>					<i>56</i>	<i>Paid in full</i>	<i>MAY 26 1917</i>											
"				<i>5</i>			<i>6</i>					<i>56</i>	<i>Paid in full</i>	<i>MAY 26 1917</i>											
"				<i>6</i>			<i>6</i>					<i>56</i>	<i>Paid in full</i>	<i>MAY 26 1917</i>											
"				<i>7</i>			<i>6</i>					<i>56</i>	<i>Paid in full</i>	<i>MAY 26 1917</i>											
"				<i>8</i>			<i>6</i>					<i>56</i>	<i>Paid in full</i>	<i>MAY 26 1917</i>											
"				<i>9</i>			<i>6</i>					<i>56</i>	<i>Paid in full</i>	<i>MAY 26 1917</i>											
"				<i>10</i>			<i>6</i>					<i>56</i>	<i>Paid in full</i>	<i>MAY 26 1917</i>											
"				<i>11</i>			<i>6</i>					<i>56</i>	<i>Paid in full</i>	<i>MAY 26 1917</i>											
"				<i>12</i>			<i>6</i>					<i>56</i>	<i>Paid in full</i>	<i>MAY 26 1917</i>											
"				<i>13</i>			<i>6</i>					<i>56</i>	<i>Paid in full</i>	<i>MAY 26 1917</i>											
"				<i>14</i>			<i>6</i>					<i>56</i>	<i>Paid in full</i>	<i>MAY 26 1917</i>											
"				<i>15</i>			<i>6</i>					<i>56</i>	<i>Paid in full</i>	<i>MAY 26 1917</i>											
"				<i>16</i>			<i>6</i>					<i>56</i>	<i>Paid in full</i>	<i>MAY 26 1917</i>											
"				<i>17</i>			<i>6</i>					<i>56</i>	<i>Paid in full</i>	<i>MAY 26 1917</i>											
"				<i>18</i>			<i>6</i>					<i>56</i>	<i>Paid in full</i>	<i>MAY 26 1917</i>											
"				<i>19</i>			<i>6</i>					<i>56</i>	<i>Paid in full</i>	<i>MAY 26 1917</i>											
"				<i>20</i>			<i>6</i>					<i>56</i>	<i>Paid in full</i>	<i>MAY 26 1917</i>											
							<i>Footings Carried Forward</i>		<i>120</i>			<i>1120</i>													

*5249*      *1120*



Tax List of Real Property in the Village of Cass Lake

Cass County, Minnesota, for Taxes of the Year 1916

IN WHOSE NAME ASSESSED	TO WHOM TRANSFERRED	Sold for Taxes	SUBDIVISION	Sec. or Lot	Town or Block	No. of Acres		VALUATION	GENERAL TAXES			SCHOOL DISTRICT		TOTAL TAXES	PAID	WHEN PAID	No. of Receipt	March Settlement	June Settlement	Penalty	November Settlement	Penalty	Collections to First Monday in January	Penalty	Delinquent on First Monday in January	REMARKS
						Acres	100ths		Mills		Ditch No.	District No.	District No.													
						Dollars	Cts.		State Sch'l.	State School Bonds	Rate	Rate														
			West																							
			Footings Brought Forward																							
Tri State Land Co.				21	22			6						56												
"				22				6						56												
"				23				6						56												
M. J. Shelley	Joseph Loeffler			24				6						56												
"	"			1	23			6						56												
"	"			2				6						56												
"	"			3				6						56												
Frank Loeffler				4				6						56												
"				5				6						56												
"				6				110						1030												
"				7				6						56												
Nick Barington	Ida Chatfield, Wm. Chatfield, Mary Chatfield			8				6						56												
"	"			9				110						1030												
Nick Bennington	"			10				6						56												
"	"			11				6						56												
Nicolai Sas	"			12				6						56												
Joseph Loeffler	"			13				6						56												
"	"			14				6						56												
"	"			15				99						927												
"	"			16				6						56												
			Footings Carried Forward					421						3939												

5298 }  
 224 ✓

8794 }  
 224 ✓ 22

1153 }  
 1198 ✓

927 139 10.66











Tax List of Real Property in the Village of Cass Lake

Cass County, Minnesota, for Taxes of the Year 1916

IN WHOSE NAME ASSESSED	TO WHOM TRANSFERRED	Sold for Taxes	SUBDIVISION	Sec. or Lot	Town or Block	Rng.	No. of Acres		VALUATION	GENERAL TAXES			Ditch No.		SCHOOL DISTRICT		TOTAL TAXES	PAID	WHEN PAID	No. of Receipt	March Settlement	June Settlement	Penalty	November Settlement	Penalty	Collections to First Monday in January	Penalty	Delinquent on First Monday in January	REMARKS
							Acres	100ths		Mills		State	School	Bonds	District No.	District No.													
							Dollars			\$	Cts.	\$	Cts.	\$	Cts.	\$													
			West																										
			Footings Brought Forward																										
M. J. Shelley	Joseph Miller			9	25			6																					
"	"			10				6																					
"	"			11				6																					
"	"			12				6																					
Mike Buganuk	"			1	26			6																					
"	"			2				6																					
Anton Wendling	"			3				6																					
"	"			4				6																					
"	"			5			121	6																					
"	"			6				6																					
George Pope	Anton Wendling			7				6																					
George Pope	"			8				6																					
"	"			9			121	6																					
Peter Gutz	"			10				6																					
"	"			11				6																					
"	"			12			121	6																					
			Footings Carried Forward					501																					

56 Paid in Full DEC 12 1917 }  
 56 Paid in Full DEC 12 1917 } 11042  
 56 Paid in Full DEC 12 1917 }  
 56 Paid in Full DEC 12 1917 }  
 56 Paid in Full MAY 31 1917 }  
 618 Paid in Full MAY 31 1917 } 5693  
 56 Paid in Full MAY 31 1917 }  
 56 Paid in Full MAR 26 1917 }  
 1133 Paid in Full MAR 26 1917 } 2508  
 56 Paid in Full MAR 26 1917 }  
 56 Paid in Full MAR 26 1917 }  
 56 }  
 1133 Paid in Full MAY 14 1917 }  
 56 Paid in Full MAY 14 1917 } 3747  
 56 }  
 1133

224 22  
 730  
 1301  
 56 08 64  
 56  
 1133 1.70 - 13.03







Tax List of Real Property in the Village of Cass Lake

Cass County, Minnesota, for Taxes of the Year 1916

IN WHOSE NAME ASSESSED	TO WHOM TRANSFERRED	Sold for Taxes	SUBDIVISION	Sec. or Lot	Town or Rng. Block	No. of Acres Acres 100ths	GENERAL TAXES				SCHOOL DISTRICT				TOTAL TAXES	PAID	WHEN PAID	No. of Receipt	March Settlement	June Settlement	Penalty	November Settlement	Penalty	Collections to First Monday in January	Penalty	Delinquent on First Monday in January	REMARKS			
							VALUATION	Mills			Ditch No.	District No.	District Rate	District Mills														District No.	District Rate	District Mills
Footings Brought Forward																														
Chas. M. Johnson				1	1		187																							
"				2			22																							
"				3			22																							
Ella Foley			S 1/2 of L. 57	4			187																							
Rebecca H. LaFontaine			N 1/2 of	5			11																							
"				6			297																							
"				7			22																							
"				8			22																							
Asel Olson	Emma M. Phelps			9			22																							
"	"			10			187																							
"	"			11			22																							
Henry Jany				12			22																							
"				13			160																							
Chris Burns				14			22																							
"				15			22																							
"				16			22																							
"				17			22																							
"				18			22																							
							1293																							
Footings Carried Forward																														

Van Pelt's add.

S 1/2 of L. 57  
N 1/2 of

1750 Paid in Full OCT 31 1917  
 206 Paid in Full MAY 28 1917 } 10525  
 206 Paid in Full MAY 28 1917 } 5228  
 1750 Paid in Full MAY 31 1917 } 7494  
 103 Paid in Full MAY 25 1917 }  
 2781 Paid in Full MAY 25 1917 } 4780  
 206 Paid in Full MAY 25 1917 }  
 206 Paid in Full MAY 25 1917 }  
 1750 Paid in Full APR 28 1917 } 3182  
 206 Paid in Full APR 28 1917 }  
 206 Paid in Full APR 28 1917 }  
 1498 Paid in Full MAY 24 1917 }  
 206 Paid in Full MAY 24 1917 } 4689  
 206 Paid in Full MAY 16 1917 }  
 206 Paid in Full MAY 16 1917 } 3916  
 206 Paid in Full MAY 16 1917 }  
 206 Paid in Full MAY 16 1917 }

1081 ✓ 1081 ✓

1730 ✓

3296 ✓

2368 ✓

1704 ✓

824 ✓

12104















Tax List of Real Property in the Village of Cass Lake

Cass County, Minnesota, for Taxes of the Year 1916

IN WHOSE NAME ASSESSED	TO WHOM TRANSFERRED	Sold for Taxes	SUBDIVISION	Sec. or Lot	Town or Block	Rng.	No. of Acres		VALUATION	GENERAL TAXES			Ditch No.		SCHOOL DISTRICT		TOTAL TAXES	PAID	WHEN PAID	No. of Receipt	March Settlement	June Settlement	Penalty	November Settlement	Penalty	Collections to First Monday in January	Penalty	Delinquent on First Monday in January	REMARKS			
							Acres	100ths		State Mills	State Sch'l. Mills	County Mills	Town Mills	Local Sch'l Mills	Total Mills	State School Bonds														Ditch No.	District No.	District Rate
			Van Pelt's add.																													
			Footings Brought Forward																													
Chris Burns				1	7				6								56	Paid in full	MAY 16 1917													
"				2					6								56	Paid in full	MAY 16 1917													
"				3					6								56	Paid in full	MAY 16 1917													
Lettie Van Pelt Burns				4				1 21									11 33	Paid in full	MAY 16 1917													
"				5					6								56	Paid in full	MAY 16 1917													
"				6					6								56	Paid in full	MAY 16 1917													
"				7					6								56	Paid in full	MAY 16 1917													
Helen E. Jondahl	Hans E. Jondahl			8					6								56	Paid in full	MAY 16 1917													
"	"			1	8				6								56	2nd Half Paid	OCT 31 1917													
"	"			2					6								56	2nd Half Paid	OCT 31 1917													
"	"			3				1 10									10 30	2nd Half Paid	OCT 31 1917													
"	"			4					6								56	1st Half Paid	MAY 31 1917													
"	"			5					6								56	1st Half Paid	MAY 31 1917													
"	"			6					6								56	1st Half Paid	MAY 31 1917													
"	"			7					6								56	1st Half Paid	MAY 31 1917													
"	"			8					6								56	1st Half Paid	MAY 31 1917													
"	"			9					6								56	2nd Half Paid	OCT 31 1917													
"	"			10					6								56	2nd Half Paid	OCT 31 1917													
			Footings Carried Forward																													

3916

1525

10009

7320

10495

10495

327

3059















